

Weder, Mark; Sirbu, Anca; Guo, Jang Ting

Conference Paper

News about Aggregate Demand and the Business Cycle

Beiträge zur Jahrestagung des Vereins für Socialpolitik 2014: Evidenzbasierte Wirtschaftspolitik
- Session: Business Cycles: News, Transmission, and Asset Prices, No. A05-V4

Provided in Cooperation with:

Verein für Socialpolitik / German Economic Association

Suggested Citation: Weder, Mark; Sirbu, Anca; Guo, Jang Ting (2014) : News about Aggregate Demand and the Business Cycle, Beiträge zur Jahrestagung des Vereins für Socialpolitik 2014: Evidenzbasierte Wirtschaftspolitik - Session: Business Cycles: News, Transmission, and Asset Prices, No. A05-V4, ZBW - Deutsche Zentralbibliothek für Wirtschaftswissenschaften, Leibniz-Informationszentrum Wirtschaft, Kiel und Hamburg

This Version is available at:

<https://hdl.handle.net/10419/100276>

Standard-Nutzungsbedingungen:

Die Dokumente auf EconStor dürfen zu eigenen wissenschaftlichen Zwecken und zum Privatgebrauch gespeichert und kopiert werden.

Sie dürfen die Dokumente nicht für öffentliche oder kommerzielle Zwecke vervielfältigen, öffentlich ausstellen, öffentlich zugänglich machen, vertreiben oder anderweitig nutzen.

Sofern die Verfasser die Dokumente unter Open-Content-Lizenzen (insbesondere CC-Lizenzen) zur Verfügung gestellt haben sollten, gelten abweichend von diesen Nutzungsbedingungen die in der dort genannten Lizenz gewährten Nutzungsrechte.

Terms of use:

Documents in EconStor may be saved and copied for your personal and scholarly purposes.

You are not to copy documents for public or commercial purposes, to exhibit the documents publicly, to make them publicly available on the internet, or to distribute or otherwise use the documents in public.

If the documents have been made available under an Open Content Licence (especially Creative Commons Licences), you may exercise further usage rights as specified in the indicated licence.

News about Aggregate Demand and the Business Cycle*

Jang-Ting Guo[†]
University of California, Riverside

Anca-Ioana Sirbu[‡]
West Virginia University

Mark Weder[§]
The University of Adelaide

June 6, 2013

Abstract

We show that an otherwise standard one-sector real business cycle model with variable capital utilization and mild increasing returns-to-scale is able to generate qualitatively as well as quantitatively realistic aggregate fluctuations driven by news shocks to two formulations of future consumption demand or government spending on goods and services. In sharp contrast to many studies in the existing expectations-driven business cycle literature, this result does not rely on non-separable preferences or investment adjustment costs. When the economy is subject to anticipated total factor productivity or investment-specific technology shocks, the relative strength of the intertemporal substitution effect needs to be enhanced for our model to exhibit positive macroeconomic co-movement and business cycle statistics that are consistent with the data.

Keywords: News Shocks; Aggregate Demand; Business Cycles.

JEL Classification: E32.

*We would like to thank an anonymous referee, Sergio Rebelo, Juin-Jen Chang, Yongsung Chang, Hung-Ju Chen, Alexandre Dmitriev, Chris Edmond, Nir Jaimovich, Andrew John, Ian King, Robert King, Charles Leung, Yiting Li, Teresa Lloyd-Braga, Chia-Hui Lu, Leonor Modesto, James Morley, Deokwoo Nam, Oscar Pavlov, Jyh-Yuan Shieh, Richard Suen, Yi-Chan Tsai, Hung-Jen Wang, Yong Wang, Jacob Wong and seminar participants at City University of Hong Kong, National Taiwan University, National Tsing Hua University (Taiwan), National Chengchi University (Taiwan), Deakin University, Soochow University (Taiwan), Melbourne Business School, Victoria University of Wellington, Universidade Católica Portuguesa, University of Tokyo, Workshop on Macroeconomic Dynamics, Midwest Macroeconomics Meeting, and Annual Conference of the Canadian Economic Association for helpful discussions and comments. Part of this research was conducted while Guo was a visiting professor of economics at University of Adelaide, whose hospitality is greatly appreciated. Weder acknowledges generous financial support from the Australian Research Council. Of course, all remaining errors are our own.

[†]Corresponding Author. Department of Economics, 3133 Sproul Hall, University of California, Riverside, CA 92521, USA, 1-951-827-1588, Fax: 1-951-827-5685, E-mail: guojt@ucr.edu.

[‡]Department of Economics, West Virginia University, Morgantown, WV 26505, USA, 1-304-293-7880, Fax: 1-304-293-5652, E-mail: anca.sirbu@mail.wvu.edu.

[§]School of Economics, The University of Adelaide, 10 Pulteney Street, Adelaide SA 5005, Australia, 61-8-8303-4664, Fax: 61-8-8223-1460, E-mail: mark.weder@adelaide.edu.au.

1 Introduction

Since the work of Beaudry and Portier (2004, 2007), it is now well known that under the assumptions of perfectly competitive markets and constant returns-to-scale in production, a standard one-sector real business cycle (RBC) model is unable to exhibit qualitatively realistic expectations-driven cyclical fluctuations, *i.e.* simultaneous expansions of output, consumption, investment and hours worked in response to good news about future technological progress. Due to the dominating intertemporal income effect, forward-looking agents will raise their current consumption and leisure, which in turn lead to decreases in today’s output and investment. As a result, a news-driven prototypical one-sector RBC model fails to generate the positive co-movement among key macroeconomic aggregates observed in the data. Subsequent research resolves this “co-movement puzzle” by incorporating combinations among some of the following features into a RBC-type economy: a convex production possibility frontier, multiple production sectors, non-separable preferences, investment adjustment costs, knowledge capital, imperfect competition, countercyclical markups, sticky prices, and costly technology adoption, among others.¹

Parallel to the early development of the original real business cycle literature, almost all the existing studies have focused on news shocks to imminent productivity improvements (a supply disturbance). In this paper, our primary attention is turned to examine the theoretical as well as quantitative plausibility of expectations-driven business cycles (EDBC) within a one-sector RBC model subject to aggregate demand impulses.² Specifically in our benchmark specification, shocks to the marginal utility of consumption *à la* Baxter and King (1991) that may affect the household’s urge to consume are considered. As a result, this preference disturbance creates a wedge between the marginal rate of substitution between consumption and leisure versus the marginal product of labor.³ The main objective of this paper is striving for *parsimonious departures* from a canonical one-sector RBC formulation, driven by expectational shocks to future consumption demand, that is able to account for, not only qualitatively

¹Representative examples include Christiano, Ilut, Motto and Rostagno (2008), Jaimovich and Rebelo (2009), Karnizova (2010), Nutahara (2010), Dupor and Mehkari (2011), Gunn and Johri (2011), Wang (2011), Tsai (2012), and Pavlov and Weder (2013).

²See, for example, Beaudry and Lucke (2009) and Schmitt-Grohé and Uribe (2012) for empirical support that anticipated demand shocks play non-negligible roles in accounting for the U.S. business cycle. On the theoretical front, see Ramey (2011, section IV.B) for an analysis of expectational disturbances to government spending; and Beaudry and Portier (2007, section 4.4), Mertens and Ravn (2011) and Sirbu (2012) for studies on anticipated tax policy shocks.

³The ratio between the marginal rate of substitution of consumption for leisure and the marginal product of labor is dubbed as the “labor wedge” in the literature. See Shimer (2009) for a recent review on the labor wedge.

but also quantitatively, the postwar U.S. business cycle. In particular, we maintain additive separability of the household utility among two normal goods (“net consumption” and leisure) both intratemporally and intertemporally. Moreover, our analytical framework does not include any investment adjustment costs. Many previous studies (*e.g.* Jaimovich and Rebelo [2009], and Karnizova [2010]), on the other hand, have shown that non-separable preferences and/or capital adjustment costs are *sine quibus non* ingredients to successfully resolve the aforementioned “co-movement puzzle”.

Under the maintained assumptions of an additive separable utility function and no investment adjustment costs, we introduce variable capital utilization and modest productive externalities to an otherwise prototypical one-sector RBC model. Our theoretic analysis shows that the *necessary* condition for consumption and investment to move in the same direction states that the equilibrium wage-hours locus is positively sloped and steeper than the labor supply curve. In a calibrated version of the model economy, the degree of aggregate returns-to-scale in production needed to satisfy the requisite condition for positive macroeconomic co-movement is found to be mild and empirically plausible *vis-à-vis* recent empirical findings of Laitner and Stolyarov (2004). Furthermore, in response to the favorable news about changes in future aggregate demand, a macroeconomic boom will occur in the economy as output, consumption, investment and labor hours all rise during the announcement period. Intuitively, an optimistic expectational impulse causes a leftward shift of the labor supply curve, which will raise the anticipated future real wage and hours worked. This in turn leads to an increase in current consumption, and in other key aggregates as well, because the household’s higher expected permanent income yields a stronger intertemporal wealth effect. We also generate simulated second moments from the benchmark specification, and compare them with the Hodrick-Prescott (H-P) filtered U.S. time series data. It turns out that our baseline model performs quite well at matching the main empirical regularities, *i.e.* the relative standard deviations to output and contemporaneous covariances, of U.S. cyclical fluctuations after 1954.

For the sensitivity analysis, we find that through the above-mentioned mechanism, the results from our benchmark model continue to hold under alternative demand disturbances commonly studied in the real business cycle literature, specifically news impulses to multiplicative consumption shocks or government spending shocks. However, the model economy slides into a counterfactual macroeconomic recession in the current period when expectational disturbances to total factor productivity or investment-specific technology shocks are considered. In

either environment, a positive news shifts the upward sloping equilibrium wage-hours locus to the left, which will then generate exactly the opposite outcome to that within demand-driven configurations since the expected future real wage and labor hours are now lower. After enhancing the relative strength of the intertemporal substitution effect associated with agents' expectations about an upcoming productivity improvement, we show that qualitatively as well as quantitatively realistic EDBC may occur in our model economy subject to anticipated aggregate or investment-specific technology shocks.

The remainder of this paper is organized as follows. Section 2 describes the model and analyzes its equilibrium conditions. Section 3 analytically and quantitatively examines the plausibility of expectations-driven business cycles within the benchmark model. Section 4 conducts a sensitivity analysis on our proposed mechanism under anticipated impulses to different types of shocks. Section 5 concludes.

2 The Economy

Our economy is populated by a unit measure of identical infinitely-lived households, each endowed with one unit of time. The representative household maximizes a discounted stream of expected utilities over its lifetime

$$E_0 \sum_{t=0}^{\infty} \beta^t \left[\frac{(c_t - \Delta_t)^{1-\sigma} - 1}{1-\sigma} - A \frac{h_t^{1+\gamma}}{1+\gamma} \right], \quad 0 < \beta < 1, \quad \sigma > 0, \quad \gamma \geq 0 \quad \text{and} \quad A > 0, \quad (1)$$

where E is the conditional expectations operator, β is the discount factor, c_t is consumption, h_t is hours worked, γ is the inverse of the (Frisch) labor supply elasticity, and σ governs the degree of risk aversion or the intertemporal elasticity of substitution (IES) in consumption. As in Baxter and King (1991), Δ_t is a random shock to preferences that affects the household's marginal utility of consumption. For example, an increase in Δ_t represents a positive disturbance to the economy's aggregate demand as it raises agents' urge to consume. We postulate that the unconditional mean of Δ_t (or its steady-state level denoted as Δ_{ss}) is zero⁴⁵, and that its innovation χ_t is specified as

⁴It follows that the steady-state intertemporal elasticity of substitution in consumption is equal to $\frac{1}{\sigma}$. Moreover, our quantitative results, reported in sections 3.2 and 3.3, are robust to the values of Δ_{ss} as long as it is smaller than the consumption counterpart c_{ss} .

⁵If Δ_t is restricted to take on only positive values, then it can be interpreted as the time-varying minimum or subsistence consumption requirement that is taken as exogenous by all households. See, for example, Álvarez-Peláez and Díaz (2005).

$$\chi_t = \underbrace{\varepsilon_t}_{\text{unanticipated}} + \underbrace{v_{t-\tau}}_{\text{news}}, \quad (2)$$

where ε_t is a contemporaneous unanticipated impulse; and $v_{t-\tau}$ represents an anticipated component which was announced or observed τ periods beforehand and influences the forward-looking household's current utility, hence a news shock. Both random errors are normally distributed with zero means and variances σ_ε^2 and σ_v^2 . It is further assumed that each series is uncorrelated over time, and that there is no correlation between them.

The representative agent also faces the following resource constraint that does not include investment adjustment costs:

$$c_t + \underbrace{k_{t+1} - (1 - \delta_t)k_t}_{x_t} = y_t, \quad k_0 > 0 \text{ given}, \quad (3)$$

where k_t is physical capital, x_t is gross investment, and $\delta_t \in (0, 1)$ represents the time-varying capital depreciation rate which takes on the functional form

$$\delta_t = \frac{1}{\phi} u_t^\phi, \quad \phi > 1, \quad (4)$$

where u_t is the rate of capital utilization that is endogenously determined by the household. The specification of $\phi > 1$ in (4) means that more intensive capital utilization accelerates its rate of depreciation. When $\phi \rightarrow \infty$, our model collapses to a standard RBC formulation with constant depreciation and utilization rates.

Output y_t is produced by the Cobb-Douglas production function

$$y_t = Y_t^{\frac{\eta}{1+\eta}} (u_t k_t)^\alpha h_t^{1-\alpha}, \quad \eta \geq 0, \quad 0 < \alpha < 1, \quad (5)$$

where Y_t stands for the economy's aggregate output that is taken as given by each individual agent, and η denotes the degree of productive externalities. In a symmetric equilibrium where $y_t = Y_t$, the social technology is given by

$$y_t = (u_t k_t)^{\alpha(1+\eta)} h_t^{(1-\alpha)(1+\eta)}. \quad (6)$$

Notice that when $\eta = (>) 0$, equation (6) exhibits aggregate constant (increasing) returns-to-scale in utilized capital $u_t k_t$ and labor hours h_t .

The first-order conditions for the household's dynamic optimization problem are

$$A(c_t - \Delta_t)^\sigma h_t^\gamma = (1 - \alpha) \frac{y_t}{h_t}, \quad (7)$$

$$\delta_t = \frac{\alpha y_t}{\phi k_t}, \quad (8)$$

$$\frac{1}{(c_t - \Delta_t)^\sigma} = \beta E_t \left\{ \frac{1}{(c_{t+1} - \Delta_{t+1})^\sigma} \left(1 - \delta_{t+1} + \alpha \frac{y_{t+1}}{k_{t+1}} \right) \right\}, \quad (9)$$

$$\lim_{t \rightarrow \infty} \beta^t \frac{k_{t+1}}{(c_t - \Delta_t)^\sigma} = 0, \quad (10)$$

where (7) equates the slope of household's indifference curve to the marginal product of labor, (8) equates the marginal gain (additional output) and marginal loss (higher depreciation) of a change in the rate of capital utilization u_t , (9) is the standard Euler equation for intertemporal consumption choices, and (10) is the transversality condition. Next, substituting (4) and (8) into (6) yields the following reduced-form social technology as a function of capital and labor inputs:

$$y_t = \alpha \frac{\alpha}{\phi - \alpha(1+\eta)} k_t^{\frac{\alpha(1+\eta)(\phi-1)}{\phi - \alpha(1+\eta)}} h_t^{\frac{\phi(1-\alpha)(1+\eta)}{\phi - \alpha(1+\eta)}}, \quad (11)$$

where $0 < \frac{\alpha(1+\eta)(\phi-1)}{\phi - \alpha(1+\eta)} < 1$, *i.e.* diminishing marginal product of capital, in order to guarantee the existence of an interior steady state.⁶

3 Expectations-Driven Business Cycles

This section examines whether the above one-sector RBC model is able to generate, not only qualitatively but also quantitatively, realistic cyclical fluctuations driven by news shocks to future consumption demand. We first analytically derive the condition(s) under which the economy exhibits positive co-movement between consumption and investment. Under the assumption that this requisite condition is satisfied, we then undertake a quantitative investigation of the model's dynamic responses and business cycle statistics within a calibrated version of our economy.

3.1 Analytical Result

In our model economy, resolving the aforementioned “co-movement puzzle” amounts to looking for the condition(s) under which consumption c_t , investment x_t , and thus output y_t all

⁶Since $0 < \alpha < 1$, $\eta \geq 0$ and $\phi > 1$, the parametric restriction of $0 < \frac{\alpha(1+\eta)(\phi-1)}{\phi - \alpha(1+\eta)} < 1$ implies that $\phi - \alpha(1 + \eta) > 0$.

move in the same direction. Hours worked h_t will co-move as well because capital is a predetermined variable and there is no change in the current-period economic fundamentals. Per Beaudry and Portier's (2004, Appendix A; 2007) temporary equilibrium approach, we use the totally-differentiated version of equations (3) and (7), together with the aggregate production technology (11), to obtain the analytical expression of $\frac{dc_t}{dx_t}$ as follows:

$$\frac{dc_t}{dx_t} = \left\{ \left(\frac{\sigma y_t}{c_t - \Delta_t} \right) \left[\frac{\phi(1-\alpha)(1+\eta)}{\phi - \alpha(1+\eta)} \right] - 1 \right\}^{-1}, \quad (12)$$

which governs the sign of correlation between consumption and investment. Given $\sigma > 0$, $0 < \alpha < 1$, $\phi > 1$, $\eta \geq 0$, $\phi - \alpha(1 + \eta) > 0$ (see footnote 6), and since $\frac{1}{c_t - \Delta_t} > 0$ represents the period- t marginal utility of consumption, $\frac{dc_t}{dx_t} > 0$ requires that

$$\frac{\frac{\phi(1-\alpha)(1+\eta)}{\phi - \alpha(1+\eta)}}{\frac{\phi(1-\alpha)(1+\eta)}{\phi - \alpha(1+\eta)} - 1 - \gamma} > \frac{c_t - \Delta_t}{\sigma y_t} > 0. \quad (13)$$

Hence, consumption and investment will move in the same direction *only if*⁷

$$\frac{\phi(1-\alpha)(1+\eta)}{\phi - \alpha(1+\eta)} - 1 > \gamma, \quad (14)$$

which is independent of σ that governs the household's intertemporal elasticity of substitution in consumption.⁸

To understand the above condition, we note that under the assumption of perfect competition in the labor market, agents' intratemporal employment decision is governed by

$$(1 - \alpha) \frac{y_t}{h_t} \stackrel{\text{demand}}{=} w_t \stackrel{\text{supply}}{=} A (c_t - \Delta_t)^\sigma h_t^\gamma, \quad (15)$$

where w_t is the real wage rate. Notice that by plugging the social technology (11) into the logarithmic version of labor demand, we find that the slope of the equilibrium wage-hours locus is equal to $\frac{\phi(1-\alpha)(1+\eta)}{\phi - \alpha(1+\eta)} - 1$. In addition, taking logarithms on the second equality of (15) indicates that the slope of the household's labor supply curve is γ (≥ 0), and its position or

⁷The inequality in (14) is not a "if and only if" condition for $\frac{dc_t}{dx_t} > 0$ because a negative preference shock and/or $\sigma < 1$ could lead to $\frac{c_t - \Delta_t}{\sigma y_t} > 1$. However, when Δ_t is restricted to be the positive subsistence level of consumption (see footnote 5) together with $\sigma \geq 1$, $\frac{c_t - \Delta_t}{\sigma y_t}$ on the right-hand side of (13) must be smaller than one in that $\sigma y_t \geq y_t > c_t > c_t - \Delta_t > 0$. On the other hand, if (14) holds, then the left-hand side of (13) is larger than one. It follows that condition (14) is not only necessary, but also sufficient, for macroeconomic co-movement provided $\Delta_t > 0$ and $\sigma \geq 1$.

⁸It is straightforward to show that under constant depreciation and utilization rates of capital ($\phi \rightarrow \infty$), the requisite condition for consumption and investment to co-move in our model economy becomes $(1 - \alpha)(1 + \eta) - 1 > \gamma$.

intercept is affected by the level of “net consumption” ($c_t - \Delta_t$). It follows that the *necessary* condition for the economy to display positive co-movement between key macroeconomic aggregates, as in (14), states that the equilibrium wage-hours locus is upward sloping and steeper than the labor supply curve. Wen (1998, p. 16) shows that (14) is also a necessary condition for our model with variable capital utilization to exhibit a continuum of stationary perfect-foresight equilibria.⁹ Therefore, as pointed out by Eusepi (2009), the requisite conditions for positive macroeconomic co-movement and equilibrium indeterminacy to occur within a one-sector RBC framework are tightly connected.

3.2 Dynamic Responses

Based on the preceding analytical result, this subsection quantitatively examines a calibrated version of our model in response to agents’ optimistic expectation about an upcoming change in aggregate demand, while maintaining saddle-path stability and equilibrium uniqueness. As in Beaudry and Portier (2004), the stochastic process for exogenous preference disturbances fed into our numerical experiments is postulated as follows: the economy starts at its steady state in period zero. At period 1, households receive a signal that the taste shifter will permanently increase to 0.01 from period $\tau = 4$ (denoted as Δ_4) onwards, and this good news turns out to be materialized in period 4.

In the benchmark specification, we adopt the following quarterly parameterization that is commonly used in the real business cycle literature: $\sigma = 1$ (*i.e.* the household utility is logarithmic in consumption), $\alpha = 0.3$, $\beta = 0.99$, $\gamma = 0$ (*i.e.* perfectly elastic or indivisible labor supply *à la* Hansen [1985] and Rogerson [1988]), and the steady-state capital depreciation rate $\delta_{ss} = 0.025$. The selected values of β and δ_{ss} imply that $\phi = 1.404$. In addition, the preference parameter A ($= 2.6706$) in (1) is chosen such that the household spends one third of its time endowment on working at the steady state. Given the baseline calibration of α , γ and ϕ , the threshold level of productive externalities that satisfies the necessary condition for positive co-movement between consumption and investment, as in (14), is $\eta_{\min} = 0.0945$.

Figure 1 presents the impulse response functions of our model economy in response to the above one-time positive innovation to future consumption expenditures under $\eta = 0.1$ for the purpose of clear illustration. Notice that the resulting level of aggregate return-to-scale in production ($= 1 + \eta$) is empirically plausible *vis-à-vis* recent empirical findings of Laitner and

⁹In an extended version of Wen’s (1998) indeterminate one-sector RBC model, Benhabib and Wen (2004) examine the quantitative business cycle driven by unanticipated disturbances to consumption demand and government spending (thus no news impulses), and sunspot shocks to agents’ animal spirits.

Stolyarov (2004) who have reported a preferred range of 1.09 – 1.11 for the U.S. economy. As can be seen from Figure 1, an optimistic expectational shock yields a macroeconomic boom with simultaneous expansions of output, consumption, investment and hours worked in period 1 after the announcement of good news is made.¹⁰ That is, our one-sector RBC model with mild increasing returns is able to generate qualitatively realistic business cycles driven solely by agents’ changing expectations about future consumption demand.

In order to understand the economic intuitions behind this result, it is useful to consider what will be the outcome that forward-looking agents, from their perspective at period 1, expect to occur in the period-4 labor market with a positively sloped equilibrium wage-hours locus which intersects the labor supply curve from below as depicted in Figure 2. Upon receiving the positive signal about future aggregate demand, the representative household anticipates that a higher Δ_4 leads to an increase in consumption c_4 . Due to the presence of sufficiently strong productive externalities ($\eta = 0.1$), the household’s “net consumption” ($c_4 - \Delta_4$) will rise, thus a leftward shift of the labor supply curve ensues. Figure 2 shows that the resulting excess demand for labor moves the equilibrium from E to E' , raising the expected real wage w_4 and hours worked h_4 , which in turn increases the expected marginal product of capital MPK_4 . It follows that how agents’ period-1 economic decisions react to these future changes depends on the relative strength of two opposing forces. On the one hand, the anticipation of a higher lifetime (labor) income results in an increase of consumption in $t = 1$ through a positive wealth effect. On the other hand, a higher expected rate of return on investment (*i.e.* MPK_4) induces households to reduce their consumption and invest more today through an intertemporal substitution effect. Our numerical simulations show that the income effect turns out to be stronger, hence current consumption c_1 rises in response to today’s good news. Since $\frac{dc_t}{dx_t} > 0$ under our parameterization where condition (14) is satisfied, investment together with output and labor hours will be higher as well at the announcement period $t = 1$.

3.3 Simulation Results

So far, we have shown that a slightly modified one-sector RBC model is able to generate qualitatively realistic co-movement of macroeconomic aggregates in response to an expectational impulse to future consumption demand. This subsection examines the corresponding statisti-

¹⁰Although not shown here due to space limitation, our model also generates an aggregate period-1 expansion in response to a positive contemporaneous and unanticipated impulse to Δ_t . In addition, this result continues to hold for contemporaneous shocks to other disturbances that we consider in section 4. These impulse response functions are available upon request.

cal business cycle properties in comparison with those obtained from the H-P filtered cyclical components of the logarithmic U.S. quarterly time series for the period 1954:1 – 2009:2. We first derive the model’s unique interior steady state (a saddle point), and then take log-linear approximations to the equilibrium conditions in its neighborhood.¹¹ In our numerical simulations, the calibrated values of σ , α , β , γ , δ_{ss} , ϕ , η ($= 0.1$) and A remain unchanged as those in section 3.2.

With regard to identifying or measuring the stochastic process for the preference shock, we follow Baxter and King (1991) and obtain the time series of Δ_t from the log-linearized version of the labor-supply portion in equation (15)¹²

$$\frac{\Delta_t}{c_{ss}} = \frac{1}{\sigma} \log A + \log c_t - \frac{1}{\sigma} \log w_t + \frac{\gamma}{\sigma} \log h_t, \quad (16)$$

where c_{ss} ($= 0.1977$) denotes the model’s steady-state level of consumption. The resulting taste disturbance is found to be well described by the following first-order autoregressive regression with a linear time trend:

$$\begin{aligned} \Delta_t &= \frac{1.5370}{(0.00910)} + \frac{0.9685}{(0.01763)} \Delta_{t-1} + \frac{0.00039t}{(0.000058)} + \chi_t, \\ \text{Adjusted } R^2 &= 0.9956 \quad \text{and} \quad \text{Durbin-Waston statistic} = 2.3957, \end{aligned} \quad (17)$$

where numbers in parentheses are standard errors of the estimated parameters, and the standard deviation of innovations σ_χ is equal to 0.001726. Notice that Δ_t is highly persistent, with an autoregressive coefficient of $\rho = 0.9685$.¹³ In addition, the correlation coefficient between the H-P filtered cyclical components of U.S. output series and our measured preference shocks is 0.5221.

Since there is no direct evidence on the respective variabilities of the unanticipated and news components for the innovations to taste shocks (*i.e.* σ_ε and σ_v), we use the Simulated Method of Moments to calibrate these parameters, as in Beaudry and Portier (2004) and Karnizova (2010). In particular, σ_ε is selected to minimize the squared error between output

¹¹Since $\Delta_{ss} = 0$, the proportionate deviations of the taste shock are computed relative the steady-state level of consumption c_{ss} .

¹²See the Appendix for detailed information on the U.S. time series data used in our quantitative analysis.

¹³We obtain very similar point estimates of ρ and σ_χ when the real wage is replaced with the marginal product of labor, *i.e.* $(1 - \alpha) \frac{y_t}{h_t}$, where $\alpha = 0.3$, in the computation of Δ_t . In this case, equation (16) is changed to

$$\frac{\Delta_t}{c_{ss}} = \frac{1}{\sigma} \log \frac{A}{1 - \alpha} + \log c_t - \frac{1}{\sigma} \log y_t + \frac{(1 + \gamma)}{\sigma} \log h_t.$$

volatility of the data σ_y ($= 1.6029\%$) and that of model-generated time series averaged across simulations. Given the baseline parameterization described above, our model is simulated $N = 1,000$ times of length 220 periods. As a result,

$$\sigma_\varepsilon = \operatorname{argmin} \left(\sigma_y - \frac{1}{N} \sum_{i=1}^N \sigma_{y,i} \right)^2, \quad (18)$$

where $\sigma_{y,i}$ represents the standard deviation of output from the i -th simulation. Using equation (2), the volatility of the anticipated component for the random error to consumption demand can then be obtained by $\sigma_v = \sqrt{\sigma_\chi^2 - \sigma_\varepsilon^2}$, where $\sigma_\chi = 0.001726$. This computational procedure yields that news impulses account for all the variance of preference innovations within the benchmark specification, *i.e.* $\chi_t = v_{t-4}$.

Table 1 presents a set of H-P filtered second moments from our model economy driven by news shocks to future consumption demand, and compares them with the postwar U.S. data. The statistics reported in column 3 are sample means from the numerical simulations, which show that our baseline configuration does a reasonably good job in quantitatively mimicking the ranking of cyclical volatilities in investment, GDP, hours worked and consumption, as well as their contemporaneous correlations with output. Moreover, the benchmark model underpredicts the relative standard deviation of consumption and its correlation with GDP, and exaggerates the cross-correlation between output and labor hours.

4 Sensitivity Analysis

This section first shows that the results from our benchmark specification continue to hold under alternative demand disturbances commonly studied in business cycle models, specifically news impulses to multiplicative consumption shocks or government spending shocks. To obtain further insights about our proposed mechanism for generating expectations-driven business cycles, we also examine anticipated innovations to total factor productivity and investment-specific technology shocks, and find that the model economy undergoes a counterfactual recession during the announcement period. After enhancing the relative strength of the intertemporal substitution effect associated with agents' expectations about future productivity improvement, our model driven by news to aggregate or investment-specific technology shocks is able to generate qualitatively as well as quantitatively realistic business cycles.

4.1 Alternative Demand Shocks

In this case, the representative household's dynamic optimization problem is to maximize

$$E_0 \sum_{t=0}^{\infty} \beta^t \left[\Lambda_t \frac{c_t^{1-\sigma} - 1}{1-\sigma} - A \frac{h_t^{1+\gamma}}{1+\gamma} \right], \quad 0 < \beta < 1, \quad \sigma > 0, \quad \gamma \geq 0 \quad \text{and} \quad A > 0, \quad (19)$$

subject to the following aggregate resource constraint:

$$c_t + k_{t+1} - (1 - \delta_t)k_t + g_t = y_t, \quad k_0 > 0 \text{ given}, \quad (20)$$

where y_t is total output as in (6), Λ_t is a multiplicative preference shock that affects agents' marginal utility of consumption *a la* Bencivenga (1992), and g_t represents public expenditures on goods and services that are financed by lump-sum taxes. Both disturbances (in logs) are specified as stationary first-order autoregressive processes whose innovations are decomposed into their respective unanticipated and news components according to (2). We also postulate that the unconditional mean of Λ_t is one, and that the steady-state ratio of government purchases to output is 0.2.

It is straightforward to show that the requisite condition for consumption and gross investment to move in the same direction ($\frac{dc_t}{dx_t} > 0$) within the aforementioned model is again given by (14). Under the same calibrated values of σ , α , β , γ , δ_{ss} , ϕ and η ($= 0.1$) as those in our baseline parameterization,¹⁴ Figure 3 illustrates that GDP, consumption, investment and hours worked all rise in $t = 1$ when agents receive the positive signal of a one-percent permanent increase in the taste shifter or public spending to be realized at period 4. In either formulation, anticipated higher future demand causes the household's period-4 labor supply curve to shift leftward as depicted in Figure 2, which in turn yields procyclical responses of key macroeconomic aggregates in the current period because of a dominating intertemporal income effect.

In terms of numerical simulations, we follow Bencivenga (1992) and set the persistence parameter for Λ_t to be 0.144, and the standard deviation of its innovations to be 0.0744. Based on Christiano and Eichenbaum (1992), the autoregressive coefficient for g_t is chosen to be 0.96, and the standard deviation of its innovations is set equal to 0.021. We then use the Simulated Method of Moments approach, as in (18), to calibrate σ_ε that produces the best fit between the observed and simulated output volatilities for each alternative demand

¹⁴The preference parameter A is adjusted to maintain the steady-state labor hours as one third within each of the four variants considered in this section.

disturbance. The last two columns of Table 1 report the simulation results.¹⁵ It turns out that our model driven by news about multiplicative consumption shocks exhibits very similar quantitative business-cycle properties to those in the benchmark specification. This implies that matching contemporaneous covariances in the data is not affected by the formulation of innovations to agents' consumption expenditures under consideration. In addition, other than underpredicting the volatility of consumption series (absorbed by variations in public expenditures) and its contemporaneous correlation with output, our model subject to anticipated government spending shocks performs no worse than other demand-driven configurations in quantitatively mimicking the observed pattern of postwar U.S. business cycles.

4.2 Total Factor Productivity and Investment-Specific Technology Shocks

In this case, the representative household's dynamic optimization problem is to maximize

$$E_0 \sum_{t=0}^{\infty} \beta^t \left[\frac{c_t^{1-\sigma} - 1}{1-\sigma} - A \frac{h_t^{1+\gamma}}{1+\gamma} \right], \quad 0 < \beta < 1, \quad \sigma > 0, \quad \gamma \geq 0 \quad \text{and} \quad A > 0, \quad (21)$$

subject to the following aggregate resource constraint:

$$c_t + \frac{x_t}{z_t} = y_t = \theta_t (u_t k_t)^{\alpha(1+\eta)} h_t^{(1-\alpha)(1+\eta)}, \quad (22)$$

where z_t is an investment-specific technological shock, and θ_t represents an impulse to the total factor productivity (TFP). Both disturbances are postulated to have unitary means, and follow (in logs) a stationary first-order autoregressive process whose innovations are decomposed into unanticipated and news components according to (2).

Once again, it can be shown that c_t and x_t will co-move within the aforementioned model only if the inequality in (14) is satisfied. Under the same parameterizations of σ ($= 1$), α , β , γ , δ_{ss} , ϕ and η as those in the benchmark specification and section 4.1, Figures 4a and 4b plot the impulse response functions of our model economy subject to a one-percent permanent increase in the aggregate and investment-specific technological improvement beginning at period 4.¹⁶ Although consumption and investment (as well as output and hours worked) are moving in the same direction as condition (14) would necessarily predict, a positive expectational shock to either formulation of technical progress generates a counterfactual recession in $t = 1$ whereby all key macroeconomic aggregates fall below their respective steady-state levels.

¹⁵These simulation results are quantitatively robust to the processes of Λ_t and g_t estimated from the U.S. time series data summarized in the Appendix.

¹⁶Figures 4a and 4b are separately presented because many points along these impulse response functions are quantitatively indistinguishable.

Intuitively, when households (standing at period 1) receive the good news about an increase in future TFP, they anticipate that a higher θ_4 will shift the positively sloped equilibrium wage-hours locus leftward as depicted in Figure 5. The resulting excess supply of labor moves the market equilibrium from E to E' , lowering the expected real wage w_4 and hours worked h_4 , which in turn reduces the expected marginal product of capital MPK_4 . It follows that the expectation of a lower permanent income results in a decrease of consumption in $t = 1$ through a negative wealth effect; whereas a reduction in the expected rate of return on investment induces agents to raise their current consumption through an intertemporal substitution effect. Figure 4a shows that the household's period-1 consumption and investment expenditures are moving in the same, but not "correct", direction because of a dominating wealth effect, *i.e.* EDBC does not emerge within this setting in spite of $\frac{dc_t}{dx_t} > 0$.¹⁷

Next, we shut down the TFP movements ($\theta_t = 1$, for all t) and substitute the first-order condition for the rate of capital utilization u_t , given by $\alpha \frac{y_t}{u_t} = \frac{u_t^{\phi-1} k_t}{z_t}$, into (6) to obtain the following reduced-form social technology as a function of investment-specific technical change z_t together with capital and labor inputs:

$$y_t = \alpha^{\frac{\alpha(1+\eta)}{\phi-\alpha(1+\eta)}} z_t^{\frac{\alpha(1+\eta)}{\phi-\alpha(1+\eta)}} k_t^{\frac{\alpha(1+\eta)(\phi-1)}{\phi-\alpha(1+\eta)}} h_t^{\frac{\phi(1-\alpha)(1+\eta)}{\phi-\alpha(1+\eta)}}. \quad (23)$$

As a result, agents' anticipation of a higher z_4 will increase the marginal productivity of labor in $t = 4$. This shifts out the equilibrium wage-hours locus, which lowers the expected real wage w_4 and labor hours h_4 as shown in Figure 5. On the other hand, an improvement in the investment-specific technology produces two additional opposing forces at period 4: the substitution effect causes the household to invest more and consume less; and the income effect raises both consumption and investment. Since the substitution effect dominates, the resulting fall in the expected future consumption c_4 generates a downward shift of the period-4 labor supply curve, reinforcing the initial decreases of w_4 and h_4 . Per the same intuitions described above, Figure 4b shows that the favorable news of an upcoming investment-specific technological progress yields a macroeconomic recession during the announcement period.

In this environment, the key for successfully generating qualitatively realistic expectations-driven business cycles in $t = 1$ is to boost the relative strength of the intertemporal substitution effect associated with news about future productivity improvement in the aggregate or investment-specific technology. This can be achieved through raising the household's intertem-

¹⁷See Guo, Sirbu and Suen (2012) for the same finding in a one-sector RBC model with fixed capital utilization and positive productive externalities coming from aggregate capital and labor inputs.

poral elasticity of substitution in consumption ($= \frac{1}{\sigma}$); and/or incorporating convex adjustment costs into the law of motion for capital accumulation given by

$$k_{t+1} = (1 - \delta_t)k_t + x_t \left[1 - \frac{\psi}{2} \left(\frac{x_t}{x_{t-1}} - 1 \right)^2 \right], \quad \psi > 0 \quad \text{and} \quad x_{-1} > 0 \text{ given,} \quad (24)$$

where the elasticity parameter ψ governs the degree (or size) of adjustment costs for capital investment.

For the preference parameter σ , most previous studies have adopted the range of one to three in their quantitative analyses. However, recent empirical research suggests that $\sigma < 1$ thus the elasticity of intertemporal consumption substitution is higher than one. For example, Vissing-Jørgensen and Attanasio (2003) report the point estimates of IES to be 1.03 (with six instruments) and 1.44 (under one instrumental variable) for the group of all stock holders. Gruber (2006) finds that the IES is around 2 when endogenous tax rate variations are included in his cross-sectional estimation on U.S. total non-durable consumption expenditures, and that this result is in line with Mulligan's (2002) estimates based on time series data of total returns to capital. On the other hand, existing empirical estimates of the adjustment cost parameter ψ range in a wide spectrum: Christiano, Eichenbaum and Evans (2005) present the point estimate of 2.48 for their benchmark specification of a monetary model with nominal rigidities; Christiano, Ilut, Motto and Rostagno (2008) consider an estimated value of 15.1; and the point estimates reported in Schmitt-Gorhé and Uribe (2012) are 9.11 from Bayesian estimation, and 25.07 per the classical maximum likelihood method.

Drawing on the above-mentioned estimation results, it can be shown that raising either the intertemporal elasticity of substitution in consumption or the size of investment adjustment costs *alone*, while maintaining the respective empirical plausibilities of σ and ψ , is unable to generate an aggregate expansion in $t = 1$ since the expectations-driven wealth effect continues to dominate. We then choose $\sigma = 0.5$, which corresponds to the highest possible value of IES that is regarded as realistic, and find that the minimum levels of ψ at which EDBC occurs at period 1 are 1.7 for the TFP and 4.2 for the investment-specific shocks.¹⁸ Notice that both values of ψ are at the lower end of its empirically plausible range. Figure 6 shows that due to a stronger intertemporal substitution effect within these parameterizations, the current-period output, consumption, investment and labor hours all rise after agents learn about the news of future technological progress.

¹⁸ Alternatively, EDBC takes place when the adjustment-cost parameter ψ is set to be 1.3 *a la* Jaimovich and Rebelo (2009), together with $\sigma = 0.45$ for the TFP shock; or $\sigma = 0.21$ for the investment-specific shock.

With regard to numerical simulations, we set the persistence parameter for θ_t to be 0.979 and the standard deviation of its innovations to be 0.0072, as in King and Rebelo (1999). Based on Justiniano and Primiceri’s (2008) work, the autoregressive coefficient for z_t is chosen to be 0.87, and the standard deviation of its innovations is set equal to 5.46. Next, we implement the SMM computational procedure described in section 3.3 to obtain σ_ε and σ_v for each disturbance. Table 2 presents our simulation results. As in the three demand-driven variants discussed earlier, our model subject to anticipated aggregate or investment-specific technology shocks is able to generate quantitatively realistic business cycles in that they perform well at matching the relative variances and contemporaneous covariances observed in the postwar U.S. data.

5 Conclusion

It is now well known that a standard one-sector real business cycle model fails to exhibit news-driven business cycles. This conundrum boils down to its inability to produce positive co-movement between output, consumption, investment and labor hours in response to agents’ changing expectations about future economic fundamentals. In this paper, we show that an otherwise prototypical one-sector real business cycle model, paired with variable capital utilization and mild increasing returns-to-scale in production, can successfully generate qualitatively as well as quantitatively realistic cyclical fluctuations driven by news shocks to future consumption expenditures or government purchases of goods and services. In sharp contrast to many previous studies, our results do not rely on non-separable preferences or investment adjustment costs, which in turn highlight the quantitative business-cycle importance of anticipated impulses to the economy’s demand side. However, the known conundrum remains when our model economy is subject to expectational disturbances to total factor productivity or investment-specific technology shocks as a counterfactual macroeconomic recession takes place during the announcement period. In order for this environment to deliver aggregate co-movements and business cycle statistics that are consistent with the data, we find that the relative strength of the intertemporal substitution effect associated with agents’ optimistic anticipation about future technological progress needs to be enhanced through raising the household’s intertemporal elasticity of substitution in consumption and incorporating convex adjustment costs into the law of motion for capital accumulation.

6 Appendix

This appendix provides detailed information about the U.S. quarterly time series data used in our quantitative analysis. The time period covered is 1954:1 – 2009:2.

Output: Gross domestic product; NIPA Table 1.1.5 (line 1), in current dollars.

Consumption: Personal consumption expenditures on non-durable goods and services; NIPA Table 1.1.5 (line 5 + line 6), in current dollars.

Investment: Gross private investment expenditures + personal consumption expenditures on durable goods; NIPA Table 1.1.5 (line 8 + line 4), in current dollars.

Government Spending: Government consumption expenditures; NIPA Table 3.1 (line 16).

Price Deflator: The implicit GDP deflator; NIPA Table 1.1.9 (line 1).

Population: Civilian non-institutional population of ages 16 and older; Bureau of Labor Statistics CNP16OV.

Average Hours Worked: Average private nonfarm business hours, all persons; Valerie Ramey's website <http://weber.ucsd.edu/~vramey/research.html#data>.

Employment: Total nonfarm employment, seasonally adjusted; Bureau of Labor Statistics PAYREMS.

Wages: Wage and salary disbursements by private industries; NIPA Tables 2.2A and 2.2B (line 2), in current dollars.

We use the series of GDP deflator and civilian population to obtain the real per-capita quantities of output, consumption, investment and government spending. Labor hours per capita are equal to total labor hours (the product of average hours worked and employment) divided by civilian population. We also use the series of GDP deflator and total labor hours to obtain the real wage per manhour.

References

- [1] Álvarez-Peláez, María and Antonia Díaz (2005), “Minimum Consumption and Transitional Dynamics in Wealth Distribution,” *Journal of Monetary Economics* 52, 633-667.
- [2] Baxter, Marianne and Robert G. King (1991), “Productive Externalities and Business Cycles,” Institute for Empirical Macroeconomics at Federal Reserve Bank of Minneapolis Discussion Paper 53.
- [3] Beaudry, Paul and Franck Portier (2004), “An Exploration into Pigou’s Theory of Cycles,” *Journal of Monetary Economics* 51, 1183-1216.
- [4] Beaudry, Paul and Franck Portier (2007), “When can Changes in Expectations Cause Business Cycle Fluctuations in Neo-Classical Settings?” *Journal of Economic Theory* 135, 458-477.
- [5] Beaudry, Paul and Bernd Lucke (2009), “Letting Different Views about Business Cycles Compete,” *NBER Macroeconomics Annual* 24, 413-455.
- [6] Benhabib, Jess and Yi Wen (2004), “Indeterminacy, Aggregate Demand, and the Real Business Cycle,” *Journal of Monetary Economics* 51, 503-530.
- [7] Bencivenga, Valerie R. (1992), “An Econometric Study of Hours and Output Variation with Preference Shocks,” *International Economic Review* 33, 449-471.
- [8] Christiano, Lawrence J. and Martin Eichenbaum (1992), “Current Real-Business-Cycle Theories and Aggregate Labor-Market Fluctuations,” *American Economic Review* 82, 430-450.
- [9] Christiano, Lawrence J., Martin Eichenbaum and Charles L. Evans (2005), “Nominal Rigidities and the Dynamic Effects of a Shock to Monetary Policy,” *Journal of Political Economy* 113, 1-45.
- [10] Christiano, Lawrence J., Cosmin Ilut, Roberto Motto and Massimo Rostagno (2008), “Monetary Policy and Stock Market Boom-Bust Cycles,” European Central Bank Working Paper Series No. 955.
- [11] Dupor, Bill and M. Saif Mehkari (2011), “News Shocks and Forward-Compatible Investment,” unpublished manuscript.
- [12] Eusepi, Stefano (2009), “On Expectations-Driven Business Cycles in Economies with Production Externalities,” *International Journal of Economic Theory* 5, 9-23.
- [13] Gruber, Jonathan (2006), “A Tax-Based Estimate of the Elasticity of Intertemporal Substitution,” National Bureau of Economic Research, Working Paper 11945.
- [14] Gunn, Christopher M. and Alok Johri (2011), “News and Knowledge Capital,” *Review of Economic Dynamics* 14, 92-101.
- [15] Guo, Jang-Ting, Anca-Ioana Sirbu and Richard M.H. Suen (2012), “On Expectations-Driven Business Cycles in Economies with Production Externalities: A Comment,” *International Journal of Economic Theory* 8, 313-319.
- [16] Hansen, Gary D. (1985), “Indivisible Labor and the Business Cycle,” *Journal of Monetary Economics* 16, 309-327.
- [17] Jaimovich, Nir and Sergio Rebelo (2009), “Can News about the Future Drive the Business Cycle?” *American Economic Review* 99, 1097-1118.

- [18] Justiniano, Alejandro and Giorgio E. Primiceri (2008), “The Time-Varying Volatility of Macroeconomic Fluctuations,” *American Economic Review* 98, 604-641.
- [19] Karnizova, Lilia (2010), “The Spirit of Capitalism and Expectation-Driven Business Cycles,” *Journal of Monetary Economics* 57, 739-752.
- [20] King, Robert G. and Sergio Rebelo (1999), “Resuscitating Real Business Cycles,” in John B. Taylor and Michael Woodford (Eds.), *Handbook of Macroeconomics*, Vol. 1, North Holland: Amsterdam, 927-1007.
- [21] Laitner, John and Dmitriy Stolyarov (2004), “Aggregate Returns to Scale and Embodied Technical Change: Theory and Measurement Using Stock Market Data,” *Journal of Monetary Economics* 51, 191-233.
- [22] Mertens, Karel and Morten O. Ravn (2011), “Understanding the Aggregate Effects of Anticipated and Unanticipated Tax Policy Shocks,” *Review of Economic Dynamics* 14, 27-54.
- [23] Mulligan, Casey (2002), “Capital, Interest, and Aggregate Intertemporal Substitution,” National Bureau of Economic Research, Working Paper 9373.
- [24] Nutahara, Kengo (2010), “Internal and External Habits and News-Driven Business Cycles,” *Economics Letters* 107, 300-303.
- [25] Pavlov, Oscar and Mark Weder (2013), “Countercyclical Markups and News-Driven Business Cycles,” *Review of Economic Dynamics* 16, 371-382.
- [26] Ramey, Valerie (2011), “Identifying Government Spending Shocks: It’s All in the Timing,” *Quarterly Journal of Economics* 126, 1-50.
- [27] Rogerson, Richard (1988), “Indivisible Labor, Lotteries, and Equilibrium,” *Journal of Monetary Economics* 21, 3-16.
- [28] Schmitt-Grohé, Stephanie and Martin Uribe (2012), “What’s News in Business Cycles,” *Econometrica* 80, 2733-2764.
- [29] Shimer, Robert (2009), “Convergence in Macroeconomics: The Labor Wedge,” *American Economic Journal: Macroeconomics* 1, 280-297.
- [30] Sirbu, Anca-Ioana (2012), “News about Taxes and Expectations-Driven Business Cycles,” unpublished manuscript.
- [31] Tsai, Yi-Chan (2012), “News Shocks and Costly Technology Adoption,” unpublished manuscript.
- [32] Vissing-Jørgensen, Annette and Orazio P. Attanasio (2003), “Stock-Market Participation, Intertemporal Substitution, and Risk-Aversion” *American Economic Review Papers and Proceedings* 93, 383-391.
- [33] Wang, Pengfei (2011), “Understanding Expectation-Driven Fluctuations – A Labor-Market Approach,” *Journal of Money, Credit, and Banking* 44, 487-506.
- [34] Wen, Yi (1998), “Capacity Utilization under Increasing Returns to Scale,” *Journal of Economic Theory* 81, 7-36.

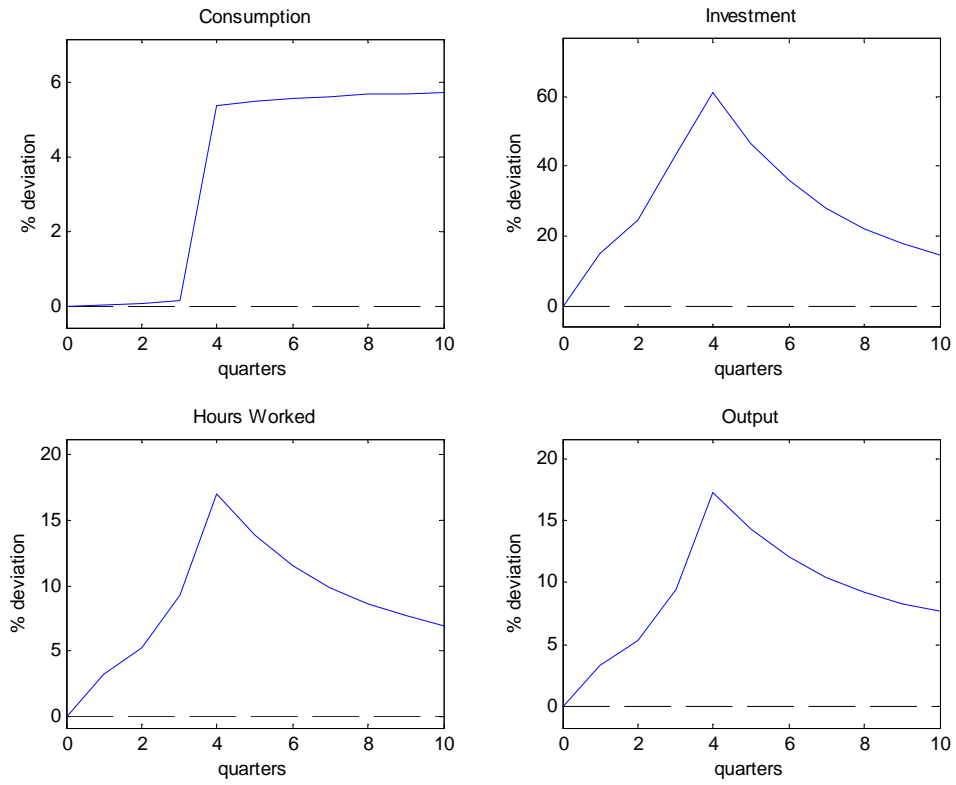


Figure 1. Impulse Response Functions: Benchmark Model

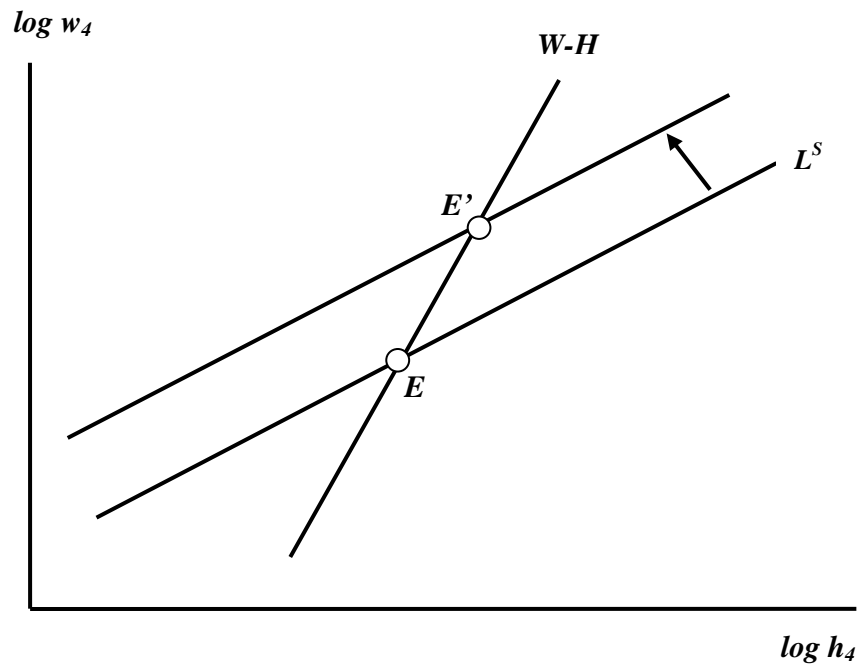


Figure 2. Anticipated Labor Market Outcomes at Period 4

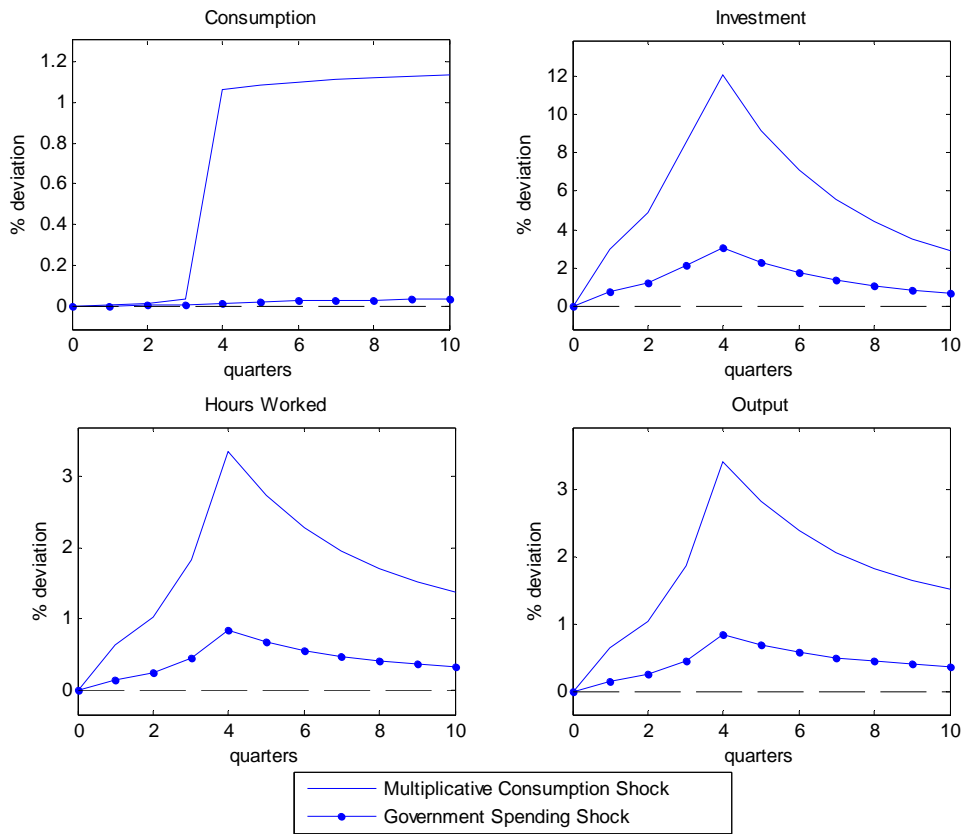


Figure 3. Impulse Response Functions: Alternative Demand Shocks

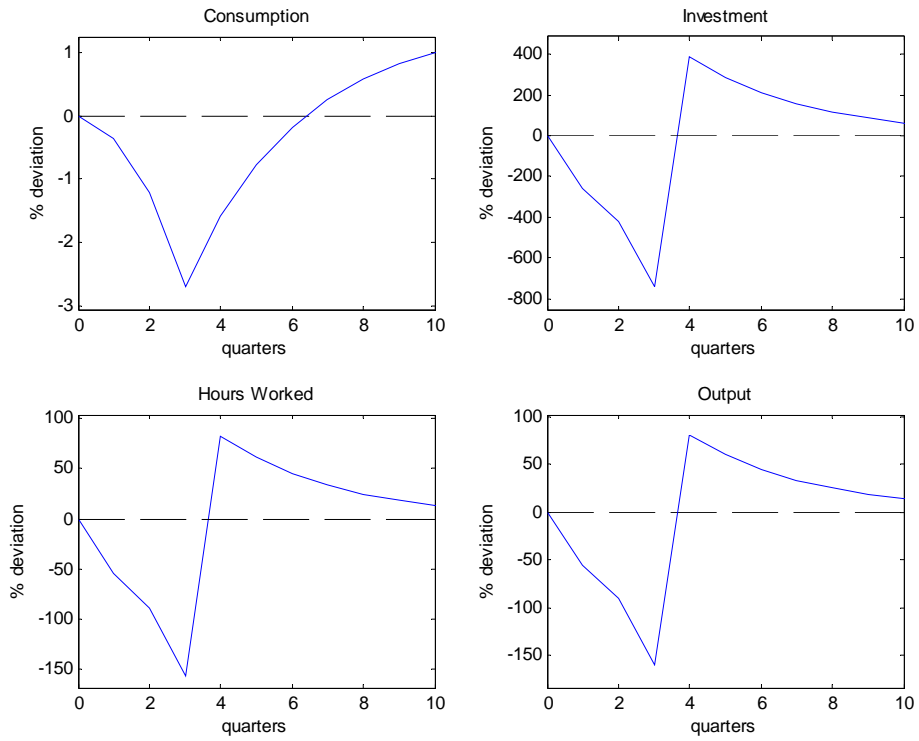


Figure 4a. Impulse Response Functions: Total Factor Productivity Shocks

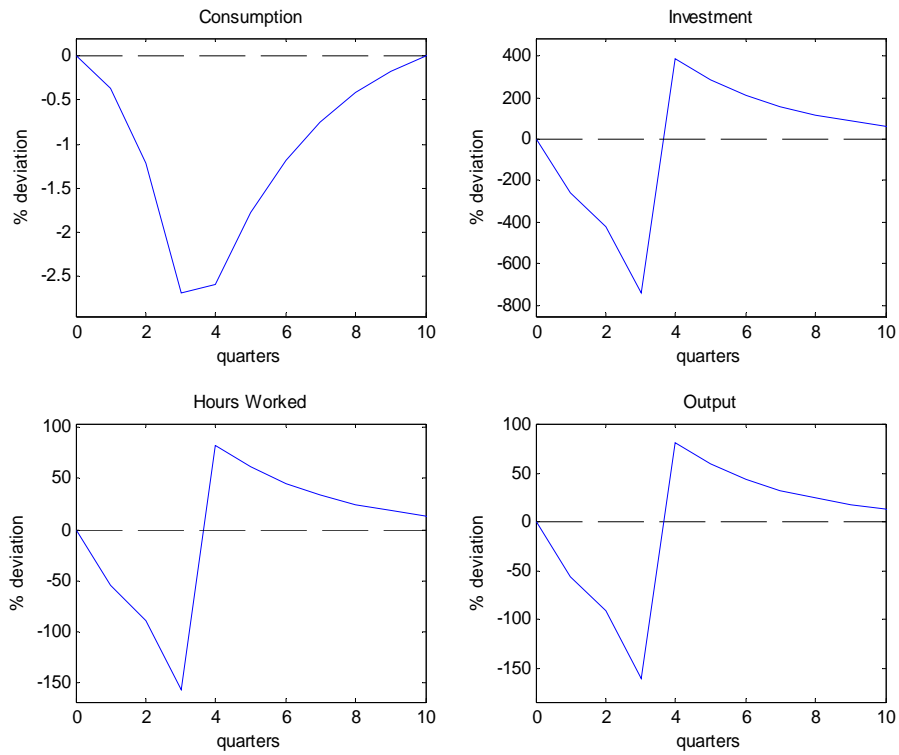


Figure 4b. Impulse Response Functions: Investment-Specific Technology Shocks

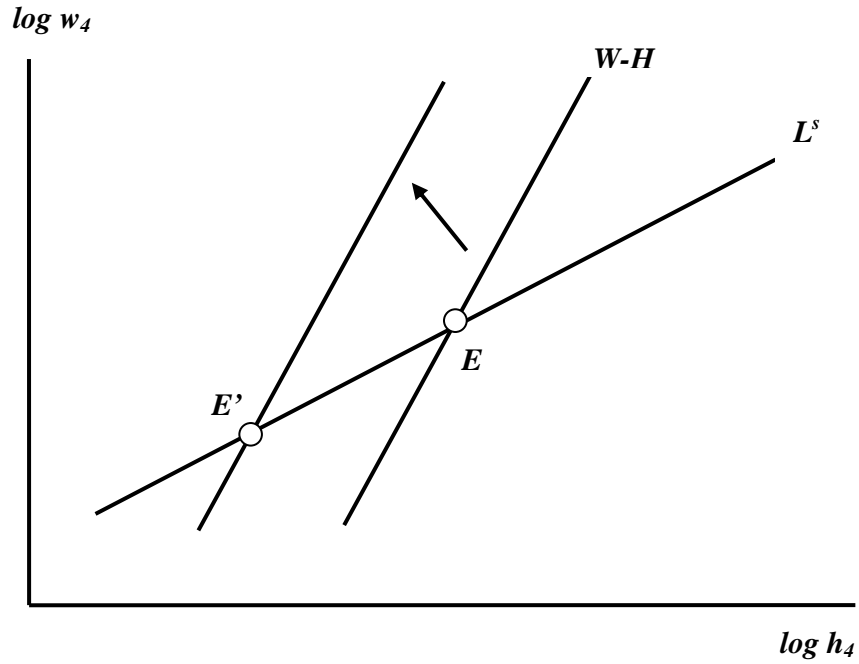


Figure 5. Anticipated Labor Market Outcomes at Period 4

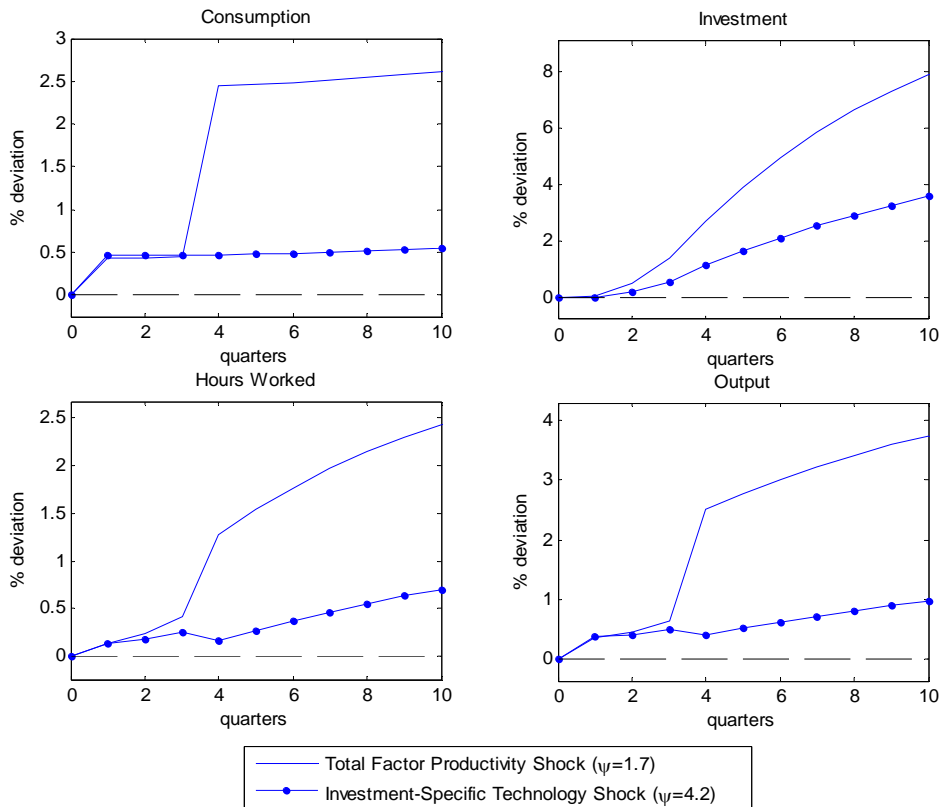


Figure 6. Impulse Response Functions under $\sigma = 0.5$: Total Factor Productivity and Investment-Specific Technology Shocks

Table 1. Business Cycle Statistics: Demand Shocks

	U.S. Data 1954:1-2009:2	Benchmark Consumption Shock	Multiplicative Consumption Shock	Government Spending Shock
<i>Relative Standard Deviations to Output</i>				
σ_c/σ_y	0.5442	0.3956	0.4638	0.0323
σ_x/σ_y	3.7931	3.8802	3.5924	3.8788
σ_h/σ_y	0.9905	0.9879	0.9931	0.9882
<i>Contemporaneous Correlations with Output</i>				
$\text{corr}(c, y)$	0.8005	0.6581	0.7456	0.3786
$\text{corr}(x, y)$	0.9383	0.9591	0.9484	0.9594
$\text{corr}(h, y)$	0.8852	0.9995	0.9999	0.9995

Table 2. Business Cycle Statistics: Total Factor Productivity and Investment-Specific Technology Shocks

	U.S. Data 1954:1-2009:2	Total Factor Productivity Shock	Investment-Specific Technology Shock
<i>Relative Standard Deviations to Output</i>			
σ_c/σ_y	0.5442	0.7700	0.1898
σ_x/σ_y	3.7931	2.4599	4.6898
σ_h/σ_y	0.9905	0.6754	0.9425
<i>Contemporaneous Correlations with Output</i>			
$\text{corr}(c, y)$	0.8005	0.8980	0.6380
$\text{corr}(x, y)$	0.9383	0.8603	0.8899
$\text{corr}(h, y)$	0.8852	0.9676	0.9939
