

Hautsch, Nikolaus; Podolskij, Mark

Working Paper

Pre-averaging based estimation of quadratic variation in the presence of noise and jumps: Theory, implementation, and empirical evidence

CFS Working Paper, No. 2010/17

Provided in Cooperation with:

Center for Financial Studies (CFS), Goethe University Frankfurt

Suggested Citation: Hautsch, Nikolaus; Podolskij, Mark (2010) : Pre-averaging based estimation of quadratic variation in the presence of noise and jumps: Theory, implementation, and empirical evidence, CFS Working Paper, No. 2010/17, Goethe University Frankfurt, Center for Financial Studies (CFS), Frankfurt a. M., <https://nbn-resolving.de/urn:nbn:de:hebis:30-75630>

This Version is available at:

<https://hdl.handle.net/10419/43201>

Standard-Nutzungsbedingungen:

Die Dokumente auf EconStor dürfen zu eigenen wissenschaftlichen Zwecken und zum Privatgebrauch gespeichert und kopiert werden.

Sie dürfen die Dokumente nicht für öffentliche oder kommerzielle Zwecke vervielfältigen, öffentlich ausstellen, öffentlich zugänglich machen, vertreiben oder anderweitig nutzen.

Sofern die Verfasser die Dokumente unter Open-Content-Lizenzen (insbesondere CC-Lizenzen) zur Verfügung gestellt haben sollten, gelten abweichend von diesen Nutzungsbedingungen die in der dort genannten Lizenz gewährten Nutzungsrechte.

Terms of use:

Documents in EconStor may be saved and copied for your personal and scholarly purposes.

You are not to copy documents for public or commercial purposes, to exhibit the documents publicly, to make them publicly available on the internet, or to distribute or otherwise use the documents in public.

If the documents have been made available under an Open Content Licence (especially Creative Commons Licences), you may exercise further usage rights as specified in the indicated licence.



No. 2010/17

**Pre-Averaging Based Estimation of Quadratic
Variation in the Presence of Noise and Jumps:
Theory, Implementation, and Empirical Evidence**

Nikolaus Hautsch and Mark Podolskij





Center for Financial Studies

The *Center for Financial Studies* is a nonprofit research organization, supported by an association of more than 120 banks, insurance companies, industrial corporations and public institutions. Established in 1968 and closely affiliated with the University of Frankfurt, it provides a strong link between the financial community and academia.

The CFS Working Paper Series presents the result of scientific research on selected topics in the field of money, banking and finance. The authors were either participants in the Center's Research Fellow Program or members of one of the Center's Research Projects.

If you would like to know more about the *Center for Financial Studies*, please let us know of your interest.

Prof. Michalis Haliassos, Ph.D.

Prof. Dr. Jan Pieter Krahen

Prof. Dr. Uwe Walz



CFS Working Paper No. 2010/17

**Pre-Averaging Based Estimation of Quadratic
Variation in the Presence of Noise and Jumps:
Theory, Implementation, and Empirical Evidence***

Nikolaus Hautsch¹ and Mark Podolskij²

July 2010

Abstract:

This paper provides theory as well as empirical results for pre-averaging estimators of the daily quadratic variation of asset prices. We derive jump robust inference for pre-averaging estimators, corresponding feasible central limit theorems and an explicit test on serial dependence in microstructure noise. Using transaction data of different stocks traded at the NYSE, we analyze the estimators' sensitivity to the choice of the pre-averaging bandwidth and suggest an optimal interval length. Moreover, we investigate the dependence of pre-averaging based inference on the sampling scheme, the sampling frequency, microstructure noise properties as well as the occurrence of jumps. As a result of a detailed empirical study we provide guidance for optimal implementation of pre-averaging estimators and discuss potential pitfalls in practice.

JEL Classification: C14, C22, G10

Keywords: Quadratic Variation; MarketMicrostructure Noise; Pre-averaging; Sampling Schemes; Jumps

* This research is supported by the Deutsche Forschungsgemeinschaft (DFG) via the Collaborative Research Center 649 'Economic Risk'.

1 Institute for Statistics and Econometrics and Center for Applied Statistics and Economics (CASE), Humboldt-Universität zu Berlin as well as Quantitative Products Laboratory (QPL), Berlin, and Center for Financial Studies (CFS), Frankfurt. Address: Humboldt Universität zu Berlin, CASE, Spandauer Str. 1, 10178 Berlin, Germany. Email: nikolaus.hautsch@wiwi.hu-berlin.de.

2 ETH Zürich, Department of Mathematics, HG G32.2, 8092 Zürich, Switzerland, Email: mark.podolskij@math.ethz.ch

1 Introduction

The availability of high-frequency data has significantly influenced research on volatility estimation during the last decade. Inspired by the seminal papers by Andersen, Bollerslev, Diebold, and Labys (2001) and Barndorff-Nielsen and Shephard (2002) the idea of estimating daily volatility using realized measures relying on intraday data has stimulated a new and active area of volatility modelling and estimation.^{1 1}

This paper provides new theory, implementation details as well as extensive and detailed empirical results for the class of pre-averaging estimators originally introduced by

¹ For a recent survey on a wide range of literature, see, e.g., (Andersen, Bollerslev, and Diebold 2008).

Jacod, Li, Mykland, Podolskij, and Vetter (2009). The paper's aim is two-fold: First, as an important theoretical contribution we extend existing theory by deriving jump robust inference for pre-averaging estimators. In this context, we develop feasible central limit theorems as well as appropriate local estimators for underlying components of pre-averaging estimators' asymptotic variance. To address serial dependence in market microstructure noise we suggest an explicit test. Second, we provide evidence on the widely unknown properties of pre-averaging estimators in practice. We shed light on their empirical performance and analyze the impact of implementation details, such as the optimal choice of local pre-averaging windows, the role of sampling frequency, finite-sample adjustments as well as the impact of the sampling scheme in dependence of noise properties and jumps.

The main difficulty in estimating the daily quadratic variation of asset prices using noisy high-frequency data is how to optimally employ a maximum of information without being affected by so-called market microstructure noise arising from market frictions, such as the bid-ask bounce or the discreteness of prices, inducing a deviation of the price process from a continuous semi-martingale process. As discussed, e.g., by Hansen and Lunde (2006), among others, market microstructure noise can lead to severe biases and inconsistency of the estimators when the sampling frequency tends to infinity. In order to overcome these effects, sparse sampling, e.g., based on 20 minutes, has been proposed as an ad hoc solution (see, e.g., Andersen, Bollerslev, Diebold, and Labys (2003)). The major disadvantage of sparse sampling, however, is the enormous data loss and the resulting inefficiency of the estimator. As a result, various methods for bias corrections and filtering of noise effects have been proposed in the literature. The most prominent and general approaches are the realized kernel estimator by Barndorff-Nielsen, Hansen, Lunde, and Shephard (2008), the two-scale estimator by Zhang, Mykland, and Ait-Sahalia (2005) and the pre-averaging estimator by Jacod, Li, Mykland, Podolskij, and Vetter (2009).² While the empirical performance and properties of kernel type estimators are analyzed in Hansen and Lunde (2006) and Barndorff-Nielsen, Hansen, Lunde, and Shephard (2008), the empirical properties of pre-averaging estimators are widely unknown and have not been studied systematically yet. As also illustrated by Barndorff-Nielsen, Hansen, Lunde, and Shephard (2008), the estimators' empirical (finite-sample) properties can significantly deviate from theoretical (asymptotic) properties making finite-sample and data-specific adjustments necessary and ultimately important in financial practice. In this context, implementation details, such as the appropriate choice of plug-in estimators, the role of data properties as well as the underlying sampling scheme play a crucial role.

This paper is motivated by the need for a better understanding of how pre-averaging estimators and corresponding inference work in practice and how they should be optimally implemented. Using transaction and quote data from different stocks traded at the New York Stock Exchange we study the estimators' dependence on the choice of the underlying local pre-averaging interval, the role of the sampling scheme (i.e., calendar time sampling vs. business time sampling, transaction price sampling vs. midquote price sampling) and the impact of the sampling frequency. A new test on the serial dependence in microstructure noise yields deeper insights into the impact of noise properties on the estimator's performance. An important contribution of this paper is the development of jump robust inference for pre-averaging estimators and corresponding feasible central limit theorems. Empirical implementation using estimators of local variance components provide evidence on jump frequencies and the impact of jumps on estimation errors.

Employing pre-averaging based inference to transaction and quote data of a cross-

²See Andersen, Bollerslev, and Diebold (2008) for an overview of alternative approaches.

section of NYSE stocks covering different liquidity classes we gain insights into the sensitivity of the estimators and tests for jumps as well as noise dynamics to the length of the underlying local pre-averaging interval and find a data-driven MSE minimizing choice to be empirically preferable. In this context, finite sample adjustments of the estimator and the underlying sampling scheme are particularly important. Using an optimal pre-averaging scheme we find jump proportions between 5% and 10% on average. Ignoring the possibility of jumps in the price process leads to an under-estimation of 95% confidence intervals of approximately 15% on average.

Moreover, our results suggest implementing pre-averaging estimators based on maximally high sampling frequencies. A reduction in sampling frequency tends to imply an 'oversmoothing' of volatility resulting in negative biases. Finally, benchmarking the pre-averaging estimators to realized kernels and sparsely sub-sampled realized variance estimators we show that basic pre-averaging is most robust to the choice of the underlying sampling scheme. As a result of this analysis we derive suggestions for optimal implementation of this class of estimators and tests in practice.

The remainder of the paper is organized as follows: In Section 2, we present the basic case with underlying conditionally independent noise without jumps, discuss the underlying theoretical framework and provide evidence on the optimal choice of the pre-averaging interval. Section 3 considers pre-averaging estimators under the assumption of continuous semimartingales with dependent noise and presents empirical evidence based on an explicit test. In Section 4, we discuss the discontinuous case including the possibility of jumps. Finally, in Section 5, the time series properties and the impact of sampling frequencies and schemes are analyzed while Section 6 concludes.

2 Pre-Averaging Estimators for the Quadratic Variation: The Continuous Case

2.1 The Basic Model

It is well-known in finance that, under the no-arbitrage assumption, price processes must follow a semimartingale (see, e.g., Delbaen and Schachermayer (1994)). In this section, we consider a continuous semimartingale $(X_t)_{t \geq 0}$ of the form

$$X_t = X_0 + \int_0^t a_s ds + \int_0^t \sigma_s dW_s. \quad (2.1)$$

Here, W denotes a one-dimensional Brownian motion, $(a_s)_{s \geq 0}$ is a càglàd drift process and $(\sigma_s)_{s \geq 0}$ is an adapted càdlàg volatility process. Moreover, t denotes (continuous) calendar time.

However, due to various market frictions, such as price discreteness or bid-ask spreads, the efficient price X is contaminated by noise. Thus, we can only observe a noisy version Z of the process X . More precisely, we consider a filtered probability space $(\Omega, \mathbb{F}, (\mathcal{F}_t)_{t \geq 0}, \mathbb{P})$ on which we define the process Z , observed at n time points, indexed by $i = 0, 1, \dots, n$, as

$$Z_t = X_t + U_t, \quad t \geq 0, \quad (2.2)$$

where U_t denotes the error term. In case of transaction time sampling (TRTS), i indexes the (irregular) time points associated with each Δ_n -th trade. Hence, $n = \lfloor N/\Delta_n \rfloor$ with

N denoting the number of trades until t . In case of calendar time sampling (CTS), i indexes equal-spaced time intervals of length Δ_n with $n = \lceil t/\Delta_n \rceil$. Here, the price of the most previous observation occurring before the end of the sampling interval is used (previous tick sampling). For convenience, we show all theoretical relationships using the CTS notation. However, all relationships also hold for TRTS with i , Δ_n and n accordingly defined.

We are in the framework of high frequency asymptotics or so-called 'in-fill' asymptotics, i.e. $\Delta_n \rightarrow 0$. We assume that U_t 's are, conditionally on the efficient price X , centered and independent, i.e.,

$$\mathbb{E}(U_t|X) = 0, \quad U_t \perp\!\!\!\perp U_s, \quad t \neq s, \quad \text{conditionally on } X. \quad (2.3)$$

Furthermore, we assume that the conditional variance of the noise process U , defined as

$$\alpha_t^2 = \mathbb{E}(U_t^2|X), \quad (2.4)$$

is càdlàg, and introduce the process

$$N_t(q) = \mathbb{E}(|U_t|^q|X), \quad (2.5)$$

which denotes the q th conditional absolute moment of the process U . The model (2.2) has been originally introduced by Jacod, Li, Mykland, Podolskij, and Vetter (2009). In particular, it allows for time-varying variances of the noise and dependence between the efficient price X and the microstructure noise U . These features are important as they are in accordance with the stylized facts observed for high frequency observations. To better understand our framework, let us demonstrate some examples.

Example 2.1 (i) (*Additive i.i.d. noise*) Consider the discretely observed process

$$Z_{i\Delta_n} = X_{i\Delta_n} + \epsilon_{i\Delta_n},$$

where $(\epsilon_{i\Delta_n})_{i \geq 0}$ is an i.i.d. noise with $\mathbb{E}\epsilon_{i\Delta_n} = 0$, $\mathbb{E}\epsilon_{i\Delta_n}^2 = \alpha^2$, and $X \perp\!\!\!\perp \epsilon$. Then, condition (2.3) is obviously satisfied. The assumption of i.i.d. noise process is traditionally used in the first approaches dealing with microstructure effects in high frequency finance (see, e.g., Zhang, Mykland, and Aït-Sahalia (2005) and Barndorff-Nielsen, Hansen, Lunde, and Shephard (2008)).

(ii) (*Additive i.i.d. noise + rounding*) Consider the process of the form

$$Z_{i\Delta_n} = \gamma \left\lceil \frac{X_{i\Delta_n} + \epsilon_{i\Delta_n}}{\gamma} \right\rceil,$$

where $\gamma > 0$, $(\epsilon_{i\Delta_n})_{i \geq 0}$ is as in (i) and follows a $U([0, \gamma])$ distribution. Then,

$$\alpha_t^2 = \gamma^2 \left(\left\{ \frac{X_t}{\gamma} \right\} - \left\{ \frac{X_t}{\gamma} \right\}^2 \right)$$

is càdlàg and condition (2.3) is fulfilled ($\{x\}$ denotes the fractional part of x). This example is rather interesting from two perspectives. First, the noise part has a time-varying variance and is not independent from X . But the more intriguing observation is the following: it is well-known that after pure rounding at fixed level $\gamma > 0$, it is, in general, impossible to estimate the quadratic variation of X . However, adding noise process (with $U([0, \gamma])$ distribution) regularizes the problem and the quadratic variation of X (and other quantities of interest) becomes feasible as we will see in the following sections.

2.2 The Pre-Averaging Method and Asymptotic Results

Our main goal is the estimation of the integrated variance (or quadratic variation) defined as

$$IV_t = [X]_t = \int_0^t \sigma_u^2 du. \quad (2.6)$$

The pre-averaging method as originally introduced by Podolskij and Vetter (2009) is based on certain local moving averages that reduce the influence of the noise process U . Below, we briefly review the asymptotic theory for the pre-averaging method as presented in Jacod, Li, Mykland, Podolskij, and Vetter (2009).

To construct the estimator, we choose a sequence k_n of integers, which satisfies

$$k_n \Delta_n^{1/2} = \theta + o(\Delta_n^{\frac{1}{4}}) \quad (2.7)$$

for some $\theta > 0$, and a non-zero real-valued function $g : [0, 1] \rightarrow \mathbb{R}$, which is continuous, piecewise continuously differentiable such that g' is piecewise Lipschitz, and $g(0) = g(1) = 0$. Then, g is associated with the following real valued numbers:

$$\begin{aligned} \psi_1 &= \int_0^1 (g'(s))^2 ds, & \psi_2 &= \int_0^1 (g(s))^2 ds, \\ \phi_1(s) &= \int_s^1 g'(u)g'(u-s)du, & \phi_2(s) &= \int_s^1 g(u)g(u-s)du, & s \in [0, 1], \\ \Phi_{ij} &= \int_0^1 \phi_i(s)\phi_j(s)ds, & i, j &= 1, 2. \end{aligned}$$

Example 2.2 A typical example of a function $g : [0, 1] \rightarrow \mathbb{R}$, which we use in the empirical section, is given by $g(x) = x \wedge (1 - x)$. In this case, the afore-mentioned constants are

$$\psi_1 = 1, \quad \psi_2 = \frac{1}{12}, \quad \Phi_{11} = \frac{1}{6}, \quad \Phi_{12} = \frac{1}{96}, \quad \Phi_{22} = \frac{151}{80\,640}.$$

The pre-averaged returns are given as

$$\bar{Z}_i^n = \sum_{j=1}^{k_n} g\left(\frac{j}{k_n}\right) \Delta_{i+j}^n Z, \quad \Delta_i^n Z = Z_{i\Delta_n} - Z_{(i-1)\Delta_n}. \quad (2.8)$$

Notice that the latter performs a weighted averaging of the increments $\Delta_j^n Z$ in the local window $[i\Delta_n, (i + k_n)\Delta_n]$. It is intuitively clear that such an averaging diminishes the influence of the noise to some extent. The window size k_n is chosen to be of order $\Delta_n^{-1/2}$ to find a balance between the two conflicting convergence rates that are due to the diffusive part and the noise part. This choice will lead later to optimal convergence rates.

Our main statistical instruments are the realized variance

$$RV_t^n = \sum_{i=0}^{\lfloor t/\Delta_n \rfloor} |\Delta_i^n Z|^2, \quad (2.9)$$

and the pre-averaging estimator

$$V(Z, 2)_t^n = \sum_{i=0}^{[t/\Delta_n]-k_n} |\bar{Z}_i^n|^2, \quad (2.10)$$

which is a direct analogue of RV based on pre-averaged returns \bar{Z}_i^n . We remark that RV_t^n is not an appropriate estimator of the integrated volatility in the noisy diffusion model (2.2). More precisely, we have that

$$\frac{\Delta_n}{2} RV_t^n \xrightarrow{\mathbb{P}} \int_0^t \alpha_u^2 du, \quad (2.11)$$

i.e., a normalized version of RV_t^n converges to the integrated conditional variance of the noise process U (see, e.g., Jacod, Li, Mykland, Podolskij, and Vetter (2009)).

Denote a mixed normal distribution with expectation 0 and (conditional) variance V^2 by $MN(0, V^2)$. Then, the main result of this subsection is the following theorem.

Theorem 2.3 *Assume that the process $N_t(2)$ is locally bounded. Then, we have*

$$\frac{\sqrt{\Delta_n}}{\theta\psi_2} V(Z, 2)_t^n \xrightarrow{\mathbb{P}} \int_0^t \sigma_u^2 du + \frac{\psi_1}{\theta^2\psi_2} \int_0^t \alpha_u^2 du.$$

By (2.11) we obtain a consistent estimator of IV_t by

$$C_t^n := \frac{\sqrt{\Delta_n}}{\theta\psi_2} V(Z, 2)_t^n - \frac{\psi_1\Delta_n}{2\theta^2\psi_2} RV_t^n \xrightarrow{\mathbb{P}} IV_t = \int_0^t \sigma_u^2 du. \quad (2.12)$$

Furthermore, when the process $N_t(8)$ is locally bounded, we deduce the associated central limit theorem

$$\Delta_n^{-1/4} (C_t^n - IV_t) \xrightarrow{st} MN(0, \Gamma_t), \quad (2.13)$$

where the convergence is stable in distribution (see Renyi (1963) for the definition of stable convergence), $\Gamma_t = \int_0^t \gamma_u^2 du$ and γ_u^2 is defined by

$$\gamma_u^2 = \frac{4}{\psi_2^2} \left(\Phi_{22}\theta\sigma_u^4 + 2\Phi_{12}\frac{\sigma_u^2\alpha_u^2}{\theta} + \Phi_{11}\frac{\alpha_u^4}{\theta^3} \right). \quad (2.14)$$

Proof: See Theorem 3.1 in Jacod, Li, Mykland, Podolskij, and Vetter (2009). \square

We remark that the estimator C_t^n has the convergence rate $\Delta_n^{1/4}$, which is known to be the best attainable (see Gloter and Jacod (2001)). In order to obtain a feasible version of stable convergence in (2.13) we require a consistent estimator of the conditional variance Γ_t , which is given in the following proposition.

Proposition 2.4 *Assume that the process $N_t(8)$ is locally bounded. Then, we have*

$$\begin{aligned} \Gamma_t^n &= \frac{4\Phi_{22}}{3\theta\psi_2^4} \sum_{i=0}^{[t/\Delta_n]-k_n} |\bar{Z}_i^n|^4 \\ &+ \frac{4\Delta_n}{\theta^3} \left(\frac{\Phi_{12}}{\psi_2^3} - \frac{\Phi_{22}\psi_1}{\psi_2^4} \right) \sum_{i=0}^{[t/\Delta_n]-2k_n} |\bar{Z}_i^n|^2 \sum_{j=i+k_n+1}^{i+2k_n} |\Delta_j^n Z|^2 \\ &+ \frac{\Delta_n}{\theta^3} \left(\frac{\Phi_{11}}{\psi_2^2} - 2\frac{\Phi_{12}\psi_1}{\psi_2^3} + \frac{\Phi_{22}\psi_1^2}{\psi_2^4} \right) \sum_{i=1}^{[t/\Delta_n]-2} |\Delta_i^n Z|^2 |\Delta_{i+2}^n Z|^2 \xrightarrow{\mathbb{P}} \Gamma_t. \end{aligned}$$

Proof: See Theorem 3.1 in Jacod, Li, Mykland, Podolskij, and Vetter (2009). \square

Now, by Proposition 2.4 and the properties of stable convergence, we deduce the convergence in distribution

$$\frac{\Delta_n^{-1/4}(C_t^n - IV_t)}{\sqrt{\Gamma_t^n}} \xrightarrow{d} N(0, 1). \quad (2.15)$$

From the latter we can obtain the confidence regions for IV_t .

Remark 2.5 Clearly, we are also able to estimate other random quantities of similar form as $\int_0^t \gamma_u^2 du$. Consider a random variable of the type

$$T_t = a \int_0^t \sigma_u^4 du + b \int_0^t \sigma_u^2 \alpha_u^2 du + c \int_0^t \alpha_u^4 du$$

for given constants a, b, c . Following the arguments of Remark 4 in Jacod, Li, Mykland, Podolskij, and Vetter (2009) a consistent estimator of T is obtained by

$$\begin{aligned} T_t^n &= \frac{a}{3\theta^2\psi_2^2} \sum_{i=0}^{[t/\Delta_n]-k_n} |\bar{Z}_i^n|^4 \\ &+ \Delta_n \frac{b\theta^2\psi_2 - 2a\psi_1}{2\theta^4\psi_2^2} \sum_{i=0}^{[t/\Delta_n]-2k_n} |\bar{Z}_i^n|^2 \sum_{j=i+k_n+1}^{i+2k_n} |\Delta_j^n Z|^2 \\ &+ \frac{\Delta_n}{4} \left(c + \frac{a\psi_1^2 - b\theta^2\psi_1\psi_2}{\theta^4\psi_2^2} \right) \sum_{i=1}^{[t/\Delta_n]-2} |\Delta_i^n Z|^2 |\Delta_{i+2}^n Z|^2 \xrightarrow{\mathbb{P}} T_t. \end{aligned} \quad (2.16)$$

For instance, when taking $(a, b, c) = (1, 0, 0)$, we obtain a consistent estimator of the integrated quarticity $\int_0^t \sigma_u^4 du$.

2.3 Finite Sample Adjustments

To reduce the finite sample bias in case of too small sampling frequencies we need to slightly modify our statistics. First, let us introduce the finite sample analogues of the quantities $\psi_1, \psi_2, \Phi_{ij}, \phi_1(s), \phi_2(s)$ as given by

$$\begin{aligned} \psi_1^{k_n} &= k_n \sum_{j=1}^{k_n} \left(g\left(\frac{j+1}{k_n}\right) - g\left(\frac{j}{k_n}\right) \right)^2, & \psi_2^{k_n} &= \frac{1}{k_n} \sum_{j=1}^{k_n-1} g^2\left(\frac{j}{k_n}\right) \\ \phi_1^{k_n}(j) &= \sum_{i=j+1}^{k_n} \left(g\left(\frac{i-1}{k_n}\right) - g\left(\frac{i}{k_n}\right) \right) \left(g\left(\frac{i-j-1}{k_n}\right) - g\left(\frac{i-j}{k_n}\right) \right), & \phi_2^{k_n}(j) &= \sum_{i=j+1}^{k_n} g\left(\frac{i}{k_n}\right) g\left(\frac{i-j}{k_n}\right), \\ \Phi_{11}^{k_n} &= k_n \left(\sum_{j=0}^{k_n-1} (\phi_1^{k_n}(j))^2 - \frac{1}{2} (\phi_1^{k_n}(0))^2 \right), & \Phi_{22}^{k_n} &= \frac{1}{k_n^3} \left(\sum_{j=0}^{k_n-1} (\phi_2^{k_n}(j))^2 - \frac{1}{2} (\phi_2^{k_n}(0))^2 \right), \\ \Phi_{12}^{k_n} &= \frac{1}{k_n} \left(\sum_{j=0}^{k_n-1} \phi_1^{k_n}(j) \phi_2^{k_n}(j) - \frac{1}{2} \phi_1^{k_n}(0) \phi_2^{k_n}(0) \right). \end{aligned}$$

Note that $\psi_i^{k_n} \rightarrow \psi_i$, $\Phi_{il}^{k_n} \rightarrow \Phi_{il}$ and $\phi_i^{k_n}(j) - \phi_i(j/k_n) \rightarrow 0$ ($i, l = 1, 2$), but the above approximations are the "correct" quantities (i.e., these are the quantities that really appear in the proof). Now, we redefine our main statistics as follows:

$$C_{t,a}^n = \left(1 - \frac{\psi_1^{k_n} \Delta_n}{2\theta^2 \psi_2^{k_n}}\right)^{-1} \left(\frac{[t/\Delta_n] \sqrt{\Delta_n}}{([t/\Delta_n] - k_n + 2)\theta \psi_2^{k_n}} V(Z, 2)_t^n - \frac{\psi_1^{k_n} \Delta_n}{2\theta^2 \psi_2^{k_n}} RV_t^n \right)$$

and

$$\begin{aligned} \Gamma_{t,a}^n &= \left(1 - \frac{\psi_1^{k_n} \Delta_n}{2\theta^2 \psi_2^{k_n}}\right)^{-2} \left(\frac{4\Phi_{22}^{k_n} [t/\Delta_n]}{3\theta(\psi_2^{k_n})^4 ([t/\Delta_n] - k_n + 1)} \sum_{i=0}^{[t/\Delta_n] - k_n} |\bar{Z}_i^n|^4 \right. \\ &+ \frac{4\Delta_n [t/\Delta_n]}{\theta^3 ([t/\Delta_n] - k_n + 1)} \left(\frac{\Phi_{12}^{k_n}}{(\psi_2^{k_n})^3} - \frac{\Phi_{22}^{k_n} \psi_1^{k_n}}{(\psi_2^{k_n})^4} \right) \sum_{i=0}^{[t/\Delta_n] - k_n} |\bar{Z}_i^n|^2 \sum_{j=i+k_n+1}^{i+2k_n} |\Delta_j^n Z|^2 \\ &+ \left. \frac{\Delta_n [t/\Delta_n]}{\theta^3 ([t/\Delta_n] - 2)} \left(\frac{\Phi_{11}^{k_n}}{(\psi_2^{k_n})^2} - \frac{2\Phi_{12}^{k_n} \psi_1^{k_n}}{(\psi_2^{k_n})^3} + \frac{\Phi_{22}^{k_n} (\psi_1^{k_n})^2}{(\psi_2^{k_n})^4} \right) \sum_{i=1}^{[t/\Delta_n] - 2} |\Delta_i^n Z|^2 |\Delta_{i+2}^n Z|^2 \right), \end{aligned}$$

where the subscript a stands for *adjusted*. Note that the finite-sample adjustments do not influence the asymptotic results.

To explain the afore-mentioned modifications let us consider the statistic $C_{t,a}^n$. First, the factor $[t/\Delta_n]/([t/\Delta_n] - k_n + 1)$ in the definition of $C_{t,a}^n$ is an adjustment for the true number of summands in $V(Z, 2)_t^n$. On the other hand, we have that

$$\frac{\Delta_n}{2} RV_t^n \approx \int_0^t \alpha_u^2 du + \frac{\Delta_n}{2} IV_t,$$

where the error of this approximation is of order Δ_n and has expectation 0. This means that the original statistic C_t^n actually estimates

$$\left(1 - \frac{\psi_1^{k_n} \Delta_n}{2\theta^2 \psi_2^{k_n}}\right) IV_t.$$

This explains the appearance of $\left(1 - \frac{\psi_1^{k_n} \Delta_n}{2\theta^2 \psi_2^{k_n}}\right)^{-1}$ in the definition of $C_{t,a}^n$.

2.4 Choosing θ in Practice

To analyze the empirical properties of the pre-averaging estimators and their sensitivity to the choice of θ we employ transaction and quote data of the stocks Exxon (XOM), Citigroup (C), Homedepot (HD), Sonoco Products Co. (SON), Tektronik (TEK) and Zale Corporation (ZLC) traded at the New York Stock Exchange (NYSE) between May and August 2006 corresponding to 88 trading days. The sample represents an arbitrary cross-sectional selection covering highly and less liquid stocks. We focus on four sampling schemes:

- (i) calendar time sampling (CTS) using transaction prices,
- (ii) calendar time sampling (CTS) using mid-quotes,

- (iii) transaction time sampling (TRTS) using transaction prices,
- (iv) tick change time sampling (TTS) using mid-quotes.

CTS is commonly used in the empirical literature (see, e.g., Andersen, Bollerslev, Diebold, and Labys (2003)) and is a natural choice if the sampling frequency is moderate (e.g., 10 minutes). However, it faces the problem of sampling mainly zero return intervals if the sampling frequency is very high. In this case, TRTS is a more natural sampling scheme since one samples only whenever a transaction has occurred avoiding sampling artificial zero returns. However, even in this case, a high number of zero returns can be sampled since many trades do not necessarily imply a price or quote change. As an alternative, TTS ignores any zero returns and samples only whenever quotes have been changed. Table 1 gives descriptive statistics on the number of trades, quote arrivals and non-zero returns for all stocks. On average, we observe between approximately 650 to 4,400 trades and 6,800 to 32,000 quote arrivals per day. Thus the sample covers a substantial range of different liquidity classes. The table gives also information on the magnitude of market microstructure noise as represented by its variance $\bar{\alpha}_t^2 = \int_0^t \alpha_u^2 du$ and estimated by

$$\hat{\alpha}_t^2 = \begin{cases} -\frac{1}{N-1} \sum_{i=2}^N (\Delta_i^N Z)(\Delta_{i-1}^N Z) & \text{if } \sum_{i=2}^N (\Delta_i^N Z)(\Delta_{i-1}^N Z) < 0, \\ \sum_{i=1}^N \frac{(\Delta_i^N Z)^2}{2N^0} & \text{otherwise,} \end{cases} \quad (2.17)$$

where $\Delta_i^N Z$ denotes trade-to-trade returns and N^0 is the number of all non-zero trade-to-trade returns. Eq. (2.17) corresponds to the estimator proposed by Oomen (2006) based on TRTS employing all transactions, i.e. $n = N$ and $\Delta = 1$. As it provides only positive variance estimates as long as the first-order autocorrelations of trade returns are negative, we replace it by $\sum_{i=1}^N \frac{(\Delta_i^N Z)^2}{2N^0}$ whenever $\sum_{i=2}^N (\Delta_i^N Z)(\Delta_{i-1}^N Z) \geq 0$. The latter estimator is motivated by (2.11) in case of i.i.d. noise. As suggested by Oomen (2006), $\hat{\xi}_t := \hat{\alpha}_t^2 / (\widehat{IV}_t / N)$ gives the noise-to-signal ratio per trade, where \widehat{IV}_t is computed as the average of 10-min realized variance estimates based on 100 (equally-spaced) sub-grids over the 10min interval (henceforth RV10).³ As shown in Table 1, $\hat{\alpha}_t^2$ is varying substantially across the different stocks, with $\hat{\xi}_t$ being quite stable ranging between approximately 0.2 to 0.4. Moreover, we also report the first order empirical autocorrelation for trade-to-trade price and mid-quote returns. We observe that the magnitude of serial correlation substantially varies across the sample. The negative sign is well confirmed by the literature and is pre-dominantly driven by the bid-ask bounce effect. Interestingly, we find even higher negative autocorrelations based on mid-quote returns. This yields evidence for significant reversals in quote processes. Hence, quote changes induced, e.g., by a trade or a limit order arrival tend to be reversed quickly. Corresponding evidence is also confirmed by Hautsch and Huang (2009) analyzing the quote impact of order arrivals based on blue chip stocks. See also Hansen and Lunde (2006) for an extensive discussion of empirical properties of market microstructure noise effects.

To gain insights into the performance of the proposed pre-averaging estimators we benchmark them against the most common competing approaches employed in recent literature. In particular, we use the sub-sampled 10min RV estimator (RV10) based on trade prices, the maximum likelihood estimator proposed by Ait-Sahalia, Mykland, and Zhang (2005) and the realized kernel (RK) estimator introduced by Barndorff-Nielsen, Hansen, Lunde, and Shephard (2008) based on the Tukey-Hanning₂ kernel with optimal

³See in the Appendix for implementation details.

bandwidth. For implementation details, see the Appendix. The pre-averaging estimators and their asymptotic variances are computed as described in the previous subsection. As the estimators are not necessarily positive in all cases we bound them from below by zero. This happens, however, quite rarely and only in cases where either θ or Δ_n are chosen to be very large or in case of an insufficient number of intraday observations (as sometimes occurring in case of more illiquid stocks). Throughout the paper all quadratic variation estimates are reported in terms of averaged annualized volatilities (i.e., standard deviations) in percentages. Summary statistics of all estimators and statistics computed in the sequel of the paper are given by Tables 5 to 10 in the Appendix.

Figures 1 and 2 show averaged estimates of C_t^n and $C_{t,a}^n$ for different choices of θ based on 3 secs CTS using transaction prices and mid-quote changes as well as TRTS and TTS.⁴ The estimators' sensitivity to the choice of θ and thus the width of the local pre-averaging window is highest if θ is small. This sensitivity is particularly strong in case of TRTS and TTS inducing a strongly negative bias if θ is small. This bias is obviously induced by the fact that in finite samples, the statistic C_t^n estimates $\mathcal{A}_n \cdot IV_t$ with

$$\mathcal{A}_n = \left(1 - \frac{\psi_1^{k_n} \Delta_n}{2\theta^2 \psi_2^{k_n}}\right) IV_t$$

(see Section 2.3). For $\theta \rightarrow 0$, \mathcal{A}_n is severely downward biased. This effect is strongest in case of T(R)TS. For CTS, the bias is significantly smaller (or virtually not existing). In these cases, the finite sample adjustments can be nearly neglected. Since 3 sec CTS and T(R)TS employ essentially very similar underlying price or quote sampling information, the different θ -sensitivity of both sampling schemes is only explained by a higher sampling frequency Δ_n^{-1} in case of CTS resulting in 7,800 sampling intervals per day and scaling up \mathcal{A}_n toward one. Hence, CTS based on possibly high frequencies (i.e., ≤ 3 sec) is suggested to remove finite sample biases. Conversely, as shown in Table 1, even for very actively traded assets, T(R)TS does not induce sufficiently many sampling intervals to ensure $\mathcal{A}_n \approx 1$. Hence, in case of T(R)TS, scaling by \mathcal{A}_n^{-1} as in $C_{t,a}^n$ is essential to reduce the estimator's negative bias and ensures stabilizing the estimates for small values of θ . However, even after the finite-sample adjustment, we still observe a slightly negative bias of the estimator in case of T(R)TS. This is obviously induced by a relatively strong impact of the noise-induced component $\psi_1 \Delta_n RV_t^n / (2\theta^2 \psi_2)$ driving down the estimator if k_n is small. In this case, the width of the local window is not sufficient to diminish the influence of noise. For larger values of θ and thus k_n , this effect vanishes and we observe a stabilization of the estimator.

Second, for larger values of θ , the impact of the underlying sampling scheme diminishes and the estimates stabilize and converge (on average) to the RV10 estimates. This is particularly true for the blue chips while for the less liquid assets even for higher values of θ still slight deviations are observed. In these cases, the pre-averaging estimators are below those of the realized kernel. Conversely, both estimators are quite similar (on average) for values of θ around 0.4 to 0.6. This choice of θ seems to widely resemble the optimal bandwidth choice in the realized kernel according to Barndorff-Nielsen, Hansen, Lunde, and Shephard (2008). Overall, these results suggest choosing θ not too small but rather

⁴Note that in case of high values for θ , i.e., high values of k_n , the pre-averaging estimators cannot necessarily be computed when there are not sufficient intraday observations. This might occur particularly for the less liquid assets. In this case, the corresponding figures are based on only those trading days for which *all* estimators can be computed for *all* values of θ avoiding any sample selection effects. The range of analyzed realizations of θ is chosen to guarantee using at least 90% of the overall sample.

conservatively confirming the results by Barndorff-Nielsen, Hansen, Lunde, and Shephard (2008) (for details see in the Appendix).

To illustrate the estimators' sensitivity to the choice of θ for individual trading days, Figures 3 and 4 show $C_{t,a}^n$ in dependence of θ for the first 12 days in the sample using TRTS and CTS, respectively. Confirming the averaged results it turns out that the estimators' sensitivity is highest for small values of θ whereas they tend to stabilize for larger pre-averaging intervals. Nevertheless, we observe that the shapes can substantially vary from day to day. This is induced by daily variations in trading frequencies, noise and specific intraday price paths causing different sensitivity to pre-averaging. Based on the plots of the corresponding price paths for the first 12 trading days in the sample (Figures 5 to 7), we find evidence for the estimator's sensitivity to the choice of θ being highest if the price path tends to be not sufficiently smooth over the course of the trading day. In these situations, pre-averaging based on too large local windows seems to induce an under-estimation of the quadratic variation. These results suggest that a universal choice of θ is obviously sub-optimal and θ should be chosen rather day-specific.

To analyze the impact of the underlying sampling frequency, Figure 8 shows the θ -sensitivity of C_t^n and $C_{t,a}^n$ based on TRTS employing different sampling frequencies ($\Delta_n \in \{1, 3, 5, 10, 20, 30, 50\}$). As expected, the finite-sample adjustment becomes even more important when Δ_n is large, i.e., the sampling frequency is small. Particularly if Δ_n exceeds approximately 5, the negative biases for small values of θ become substantial. Nevertheless, the lower panel of Figure 8 shows that in these cases, the finite-sample adjustment is very effective and significantly reduces the bias. Moreover, we observe a slight downward bias of the estimator with increasing Δ_n . Hence, pre-averaging based on too large local windows seems to imply an 'over-smoothing' of volatility.

Figures 9 and 10 depict the average values of the approximate standard deviations of the pre-averaging estimates without and with finite-sample adjustments, $\Delta_n^{1/4} \sqrt{\Gamma_t}$ and $\Delta_n^{1/4} \sqrt{\Gamma_{t,a}}$, respectively. The underlying sampling schemes are CTS based on 3 sec intervals and T(R)TS employing all trades or price changes, respectively. For the liquid assets, we observe that the standard deviation is monotonically increasing in θ regardless of the finite-sample adjustment. Hence, using a larger pre-averaging window ultimately increases the estimation error. Here, the effect of additional smoothing is obviously over-compensated by a smaller number of observations (induced by larger local windows). For the less liquid stocks, the corresponding plots reveal slight non-monotonicities with increasing variances for small values of θ . These effects are, however, only visible in case of finite-sample adjustments and T(R)TS.

The relationships revealed by Figures 1 to 9 indicate an obvious trade-off between bias and efficiency. For small values of θ , the estimators are most efficient but tend to be biased and most sensitive to the choice of θ . Conversely, larger values of θ induce a stabilization and convergence of the estimator toward RV10 but a decline in efficiency.

To suggest a data-driven optimal choice of θ , we propose choosing θ as the minimizer of the mean square error (MSE) evaluated against a benchmark IV_t , i.e.,

$$\theta^* := \arg \min_{\theta} MSE = \arg \min_{\theta} (C_{t,a}^n - IV_t)^2 + \Gamma_{t,a}^n.$$

An obviously critical choice is the benchmark IV_t used to compute the bias. We choose IV_t as RV10 yielding a benchmark which tends to be unbiased, robust to market microstructure noise and does not require pre-estimating plug-in parameters such as $\bar{\alpha}_t^2$ and $\int_0^t \sigma_u^4 du$ as, e.g., in case of a realized kernel. Since no analytical solution for the MSE minimization is

available we compute θ^* using a grid search algorithm covering the range $[0.05; 3]$. Then, having θ^* , we compute the optimal window size as $k_n^* = \theta^* \Delta_n^{-1/2}$.

Figures 11 and 12 show histograms of the resulting (daily) choices of θ^* and k_n^* based on MSE minimization using highest frequency T(R)TS and 3 sec CTS. Corresponding summary statistics are reported in Tables 5 to 10. With exception of ZLC, we observe that the average values of θ^* are relatively stable across stocks. Nevertheless, they differ significantly in dependence of the underlying sampling scheme. While T(R)TS and CTS based on price observations produce values of θ^* ranging in most cases between 0.5 and 0.8 on average, CTS based on mid-quote observations yields values of θ^* between 0.9 and 1.2. This induces optimal window sizes k_n^* which increase with the underlying (average) sampling frequency yielding values between 30 and 60 for T(R)TS and 60 to 120 for 3 sec CTS. Figures 13 and 14 show the corresponding distributions for lower sampling frequencies, in particular T(R)TS with $\Delta_n = 3$ and CTS using 15 secs. We observe that for the more liquid assets, θ^* tends to become larger which is obviously driven by a larger bias if the sampling frequency declines and θ is small (recall Figure 8). Conversely, for the less liquid stocks, θ^* slightly declines due to comparably higher variances. Hence, the relationship between θ^* and the underlying sampling frequency is non-monotonous and depends also on the underlying trading frequency. Nevertheless, the dependence of k_n^* and the sampling frequency is more clear-cut. By comparing Figures 12 and 14, for all stocks the window size k_n^* becomes smaller if the underlying sampling frequency increases.

3 Continuous Semi-Martingales with Dependent Noise

3.1 Pre-Averaging with Dependent Noise

Model (2.2) implies that the noise process is uncorrelated, which is not realistic at very high frequencies (see, e.g., Hansen and Lunde (2006)). In this section, we allow for serial correlation in the noise process and derive the corresponding asymptotic results for the pre-averaging method. We consider a model

$$Z_{i\Delta_n} = X_{i\Delta_n} + U_i, \quad (3.18)$$

where X and U are independent, and $(U_i)_{i \geq 0}$ is a stationary q -dependent sequence (for some known $q > 0$), i.e., U_i and U_j are independent for $|i-j| > q$. We define the covariance function by

$$\rho(k) := \text{cov}(U_1, U_{1+k}).$$

Similarly to the first convergence in Theorem 2.3 (in the framework of (2.2)), we obtain the following results.

Lemma 3.1 *Assume that $\mathbb{E}U_1^2 < \infty$. Then, we have*

$$\frac{\sqrt{\Delta_n}}{\theta\psi_2} V(Z, 2)_t^n \xrightarrow{\mathbb{P}} \int_0^t \sigma_u^2 du + \frac{\psi_1 t}{\theta^2 \psi_2} \rho^2$$

with

$$\rho^2 = \rho(0) + 2 \sum_{k=1}^q \rho(k). \quad (3.19)$$

Proof: A careful inspection of the proof of Theorem 3.1 in Jacod, Li, Mykland, Podolskij, and Vetter (2009) shows that the first consistency result of Theorem 2.3 remains valid for the q -dependent noise. Indeed, the main ingredient of the afore-mentioned proof is the convergence in law

$$\sqrt{k_n} \bar{U}_i^n \xrightarrow{d} N(0, \psi_1 \rho^2), \quad 0 \leq i \leq [t/\Delta_n] - k_n,$$

and the independence of \bar{U}_i^n, \bar{U}_j^n for $|i - j| > k_n + q$, which both follow from the q -dependence of the noise process U . \square

Similarly to Theorem 2.3 we obtain a bias which has to be estimated from the data. The estimation procedure is a bit more involved than in the previous section. We introduce a class of estimators given by

$$\gamma_t^n(k) = \Delta_n \sum_{i=0}^{[t/\Delta_n]} \Delta_i^n Z \Delta_{i+k}^n Z, \quad k = 0, \dots, q+1. \quad (3.20)$$

In the econometric literature such estimators are called realized autocovariances (see, e.g., Barndorff-Nielsen, Hansen, Lunde, and Shephard (2008)). The following lemma describes the asymptotic behaviour of $\gamma_t^n(k)$.

Lemma 3.2 *Assume that $\mathbb{E}U_1^2 < \infty$. Then, we obtain*

$$\begin{aligned} \gamma_t^n(0) &\xrightarrow{\mathbb{P}} 2t(\rho(0) - \rho(1)), \\ \gamma_t^n(k) &\xrightarrow{\mathbb{P}} t(2\rho(k) - \rho(k-1) - \rho(k+1)), \quad k = 1, \dots, q-1, \\ \gamma_t^n(q) &\xrightarrow{\mathbb{P}} t(2\rho(q) - \rho(q-1)), \\ \gamma_t^n(q+1) &\xrightarrow{\mathbb{P}} -t\rho(q). \end{aligned}$$

Proof: Observe that

$$\begin{aligned} \gamma_t^n(k) &= \Delta_n \left(\sum_{i=0}^{[t/\Delta_n]} \Delta_i^n U \Delta_{i+k}^n U + \sum_{i=0}^{[t/\Delta_n]} \Delta_i^n X \Delta_{i+k}^n X + \sum_{i=0}^{[t/\Delta_n]} (\Delta_i^n U \Delta_{i+k}^n X + \Delta_i^n X \Delta_{i+k}^n U) \right) \\ &= \Delta_n \sum_{i=0}^{[t/\Delta_n]} \Delta_i^n U \Delta_{i+k}^n U + O_{\mathbb{P}}(\Delta_n) \end{aligned}$$

for all fixed $k \geq 0$, because U and X are independent, and $\mathbb{E}[|\Delta_i^n X|^2] \leq C\Delta_n$ (uniformly in i). The assertion of Lemma 3.2 follows now by the law of large numbers for q -dependent random variables. \square

Notice that Lemma 3.2 provides estimates $\rho_n(0), \dots, \rho_n(q)$ of $\rho(0), \dots, \rho(q)$ that are obtained by a simple recursion:

$$\begin{aligned} \rho_n(q) &= -\frac{\gamma_t^n(q+1)}{t}, \\ \rho_n(q-1) &= -\frac{\gamma_t^n(q)}{t} + 2\rho_n(q), \\ \rho_n(q-2) &= -\frac{\gamma_t^n(q-1)}{t} + 2\rho_n(q-1) - \rho_n(q). \end{aligned}$$

Thus, we deduce a $\Delta_n^{-1/2}$ -consistent estimator $\rho_n^2 = \rho_n(0) + 2 \sum_{k=1}^q \rho_n(k)$ of ρ^2 which can be used for bias correcting the statistic $V(Z, 2)_t^n$. The asymptotic results are presented in the following theorem.

Theorem 3.3 *Assume that $\mathbb{E}U_1^2 < \infty$. Then we have*

$$C_t^n(q) := \frac{\sqrt{\Delta_n}}{\theta\psi_2} V(Z, 2)_t^n - \frac{\psi_1 t}{\theta^2 \psi_2} \rho_n^2 \xrightarrow{\mathbb{P}} IV_t. \quad (3.21)$$

Furthermore, when $\mathbb{E}U_1^8 < \infty$, we deduce the associated central limit theorem

$$\Delta_n^{1/4} (C_t^n(q) - IV_t) \xrightarrow{st} MN(0, \Gamma_t(q)), \quad (3.22)$$

where $\Gamma_t(q) = \int_0^t \gamma_u^2(q) du$ and $\gamma_u^2(q)$ is defined by

$$\gamma_u^2(q) = \frac{4}{\psi_2^2} \left(\Phi_{22} \theta \sigma_u^4 + 2 \Phi_{12} \frac{\rho^2 \sigma_u^2}{\theta} + \Phi_{11} \frac{\rho^4}{\theta^3} \right). \quad (3.23)$$

Proof: The results follow along the lines of the proof of Theorem 3.1 in Jacod, Li, Mykland, Podolskij, and Vetter (2009). The justification is exactly the same as in the proof of Lemma 3.1. \square

As before, we need to estimate the conditional variance $\Gamma_t(q)$ to obtain a feasible version of (3.22). In fact, the estimation procedure is a bit easier than the one presented in Section 2, because the quantity ρ^2 is not time-varying.

Proposition 3.4 *Assume that $\mathbb{E}U_1^8 < \infty$. Then, we obtain*

$$\begin{aligned} \Gamma_t^n(q) &= \frac{4\Phi_{22}}{3\theta\psi_2^4} \sum_{i=0}^{[t/\Delta_n]-k_n} |\bar{Z}_i^n|^4 \\ &+ \frac{8\rho_n^2 \sqrt{\Delta_n}}{\theta^2} \left(\frac{\Phi_{12}}{\psi_2^3} - \frac{\Phi_{22}\psi_1}{\psi_2^4} \right) \sum_{i=0}^{[t/\Delta_n]-2k_n} |\bar{Z}_i^n|^2 \\ &+ \frac{4\rho_n^4}{\theta^3} \left(\frac{\Phi_{11}}{\psi_2^2} - 2 \frac{\Phi_{12}\psi_1}{\psi_2^3} + \frac{\Phi_{22}\psi_1^2}{\psi_2^4} \right) \xrightarrow{\mathbb{P}} \Gamma_t(q), \end{aligned}$$

and it holds that

$$\frac{\Delta_n^{1/4} (C_t^n(q) - IV_t)}{\sqrt{\Gamma_t^n(q)}} \xrightarrow{d} N(0, 1).$$

Proof: Applying Theorem 3.3 from Jacod, Podolskij, and Vetter (2009) for $p=2,4$ (which is also valid for the q -dependent noise) we deduce that

$$\Delta_n^{1-p/4} \sum_{i=0}^{[t/\Delta_n]-k_n} |\bar{Z}_i^n|^p \xrightarrow{\mathbb{P}} m_p \int_0^t (\theta\psi_2\sigma_u^2 + \theta^{-1}\psi_1\rho^2)^{p/2} du,$$

where $m_p = \mathbb{E}[|N(0, 1)|^p]$. Thus, the consistency result of Proposition 3.4 readily follows. The properties of stable convergence together with $\Gamma_t^n(q) \xrightarrow{\mathbb{P}} \Gamma_t(q)$ imply the central limit theorem. \square

The corresponding finite-sample adjustments are obtained similarly as in Section 2.3 and are given by

$$C_{t,a}^n(q) := \left(1 - \frac{\psi_1^{k_n} \Delta_n}{2\theta^2 \psi_2^{k_n}}\right)^{-1} \left(\frac{[t/\Delta_n] \sqrt{\Delta_n}}{([t/\Delta_n] - k_n + 1)\theta \psi_2^{k_n}} V(Z, 2)_t^n - \frac{\psi_1^{k_n} t}{\theta^2 \psi_2^{k_n}} \rho_n^2 \right) \quad (3.24)$$

and

$$\begin{aligned} \Gamma_{t,a}^n(q) = & \left(1 - \frac{\psi_1^{k_n} \Delta_n}{2\theta^2 \psi_2^{k_n}}\right)^{-2} \left(\frac{4\Phi_{22}^{k_n} [t/\Delta_n]}{3\theta (\psi_2^{k_n})^4 ([t/\Delta_n] - k_n + 1)} \sum_{i=0}^{[t/\Delta_n] - k_n} |\bar{Z}_i^n|^4 \right. \\ & + \frac{8\rho_n^2 \sqrt{\Delta_n} [t/\Delta_n]}{\theta^2 ([t/\Delta_n] - k_n + 1)} \left(\frac{\Phi_{12}^{k_n}}{(\psi_2^{k_n})^3} - \frac{\Phi_{22}^{k_n} \psi_1}{(\psi_2^{k_n})^4} \right) \sum_{i=0}^{[t/\Delta_n] - 2k_n} |\bar{Z}_i^n|^2 \\ & \left. + \frac{4\rho_n^4 [t/\Delta_n]}{\theta^3 ([t/\Delta_n] - k_n + 1)} \left(\frac{\Phi_{11}^{k_n}}{(\psi_2^{k_n})^2} - 2 \frac{\Phi_{12}^{k_n} \psi_1^{k_n}}{(\psi_2^{k_n})^3} + \frac{\Phi_{22}^{k_n} (\psi_1^{k_n})^2}{(\psi_2^{k_n})^4} \right) \right). \quad (3.25) \end{aligned}$$

Figures 15 and 16 show the average realizations of $C_t^n(1)$ and $C_{t,a}^n(1)$ in dependence of θ . Comparing these plots with Figures 1 and 2 as discussed in the previous subsection we observe that in case of CTS, the dependent-noise robust version of the pre-averaging estimator provides similar values as the i.i.d.-noise version. Conversely, for TTS and TRTS we find evidence for $C_{t,a}^n(1) > C_t^n(1)$. Comparing the expressions for $C_{t,a}^n(q)$ and $C_t^n(1)$ (and standardizing t to one) this can only be induced by

$$\frac{\Delta_n RV_t^n}{2} > \rho_n^2.$$

Obviously, if there is serial dependence in the noise process, the estimator $\frac{\Delta_n RV_t^n}{2}$ is upward (downward) biased if there is negative (positive) serial dependence in the noise process $\{U\}$. As shown below, we indeed find evidence for significant serial correlations in the noise process inducing an upward bias of the expression $\Delta_n RV_t^n/2$. These effects are most distinct for TTS for which also the strongest serial dependence in the return process is found (see Table 1). Similar but weaker effects are observable in case of TRTS. As shown in Figure 16, the corresponding finite-sample adjustments seem to imply an over-correction of the estimators' negative biases inducing a slight upward bias of the estimator if θ is small. This indicates that $C_{t,a}^n(1)$ tends to be more sensitive to the choice of θ than $C_t^n(1)$.

Figure 17 shows the empirical distributions of the percentage deviation between $C_{t,a}^n$ and $C_t^n(1)$. Confirming our results above it turns out that the deviations are virtually zero for CTS but are clearly higher (in magnitude) for TRTS and TTS. Tables 5 to 10 show that for an optimal choice θ^* , the average percentage deviation is around -3% to -5% for TRTS and between -5% and -10% for TTS. According to Figure 16 these differences vanish if θ becomes larger. Based on these findings we can conclude that pre-averaging based on CTS seems to yield estimates which are less sensitive to the choice of θ and serial dependence in noise. The fact that in case of CTS $C_{t,a}^n$ and $C_t^n(1)$ are very similar indicates that the i.i.d. noise version $C_{t,a}^n$ seems to be empirically (though not theoretically) quite robust. Conversely, pre-averaging based on TRTS or TTS seems to be very sensitive to adjustments for serially dependent noise. This indicates less robustness of the estimator and/or the fact that microstructure noise is more dominant in this sampling scheme.

3.2 A Test for Dependence

In the previous subsection we assumed that the number of non-vanishing covariances q is known. In practice, however, we need a decision rule on the choice of q based on the discrete observations of the price process. Formally speaking we require a test procedure to decide whether $\rho(k) = 0$ for some $k \geq 1$. To illustrate the underlying idea consider a 1-dependent noise model. In this case we would like to test whether $\rho(1) = 0$ (i.e., the noise process is actually i.i.d.) or not. Thus, we obtain the following hypothesis:

$$H_0 : \rho(1) = 0 , \quad H_1 : \rho(1) \neq 0 .$$

By a standard central limit theorem for q -dependent variables we deduce that

$$\Delta_n^{-1/2} \left(-\frac{\gamma_t^n(2)}{t} - \rho(1) \right) \xrightarrow{d} N \left(0, \frac{\tau^2}{t} \right) ,$$

where $\gamma_t^n(2)$ is defined by (3.20) and τ^2 is given by

$$\tau^2 = \tau(0) + 2 \sum_{k=1}^2 \tau(k) , \quad \tau(k) = \text{cov}((U_1 - U_0)(U_3 - U_2), (U_{1+k} - U_k)(U_{3+k} - U_{2+k})) .$$

Obviously, we require a consistent estimator of $\tau(k)$, $0 \leq k \leq 2$, to construct a test statistic. Set $H_i^n = \Delta_i^n Z \Delta_{i+2}^n Z$. Then, by the weak law of large numbers q -dependent variables we deduce that

$$\tau_n(k) = \frac{\Delta_n \sum_{i=0}^{\lfloor t/\Delta_n \rfloor} (H_i^n H_{i+k}^n - H_i^n H_{i+3}^n)}{t} \xrightarrow{\mathbb{P}} \tau(k) , \quad 0 \leq k \leq 2 .$$

The latter implies that $\tau_n^2 = \tau_n(0) + 2 \sum_{k=1}^2 \tau_n(k)$ is a consistent estimator of τ^2 . Then, the test statistic is given by

$$S_n = \frac{-\Delta_n^{-1/2} \gamma_t^n(2)}{\sqrt{t \tau_n^2}} .$$

Observe that under $H_0 : \rho(1) = 0$, we obtain that

$$S_n \xrightarrow{d} N(0, 1) .$$

We reject $H_0 : \rho(1) = 0$ at level α when

$$|S_n| > c_{1-\frac{\alpha}{2}} ,$$

where $c_{1-\frac{\alpha}{2}}$ denotes the $(1 - \frac{\alpha}{2})$ -quantile of $N(0, 1)$ -distribution. Notice that this test is consistent against the alternative $H_1 : \rho(1) \neq 0$.

Figure 18 shows the (time series) distribution of the test statistic S_n based on highest frequency T(R)TS and 3 sec CTS. Corresponding summary statistics are found in Tables 5 to 10. We observe that in case of the liquid stocks, S_n takes highly negative values supporting the evidence for significant negative serial dependence in the noise process and confirming the results by Hansen and Lunde (2006). The strength of the serial dependence is decreasing if the underlying trading frequency of the stock becomes smaller. Correspondingly, the highest test statistics are found for XOM whereas for the less liquid stocks TEK, SON and ZLC the time series distribution of the test statistic is virtually symmetrically around zero. Moreover, the highest magnitudes are found for TTS using

mid-quotes for which we also observe the strongest serial dependence in the underlying return series. Conversely, 3 sec CTS yields significant lower test statistics (in absolute terms). Hence, we can conclude that the serial dependence in underlying returns is mainly driven by a serial dependence in the corresponding noise process. As reported by Table 1, these autocorrelations and thus the test statistic S_n are obviously strongly dependent on the underlying sampling scheme. This is most evident for mid-quote based sampling. Conversely, based on CTS, S_n is close to zero on average in most cases. This also explains why $C_{t,a}^n$ and $C_{t,a}^n(1)$ perform very similar in case of CTS but not in case of T(R)TS.

4 Pre-Averaging Estimators for the Quadratic Variation: The Discontinuous Case

In this section we present the asymptotic theory for the estimator C_t^n defined in (2.12) for the discontinuous case. We consider the process $Z = X + U$ given by (2.2), where $(X_t)_{t \geq 0}$ is a discontinuous semi-martingale of the form

$$X = X_0 + \int_0^t a_u du + \int_0^t \sigma_u dW_u + (\delta 1_{\{|\delta| \leq 1\}}) * (\mu_t - \nu_t) + (\delta 1_{\{|\delta| > 1\}}) * \mu_t, \quad (4.26)$$

where μ is a Poisson random measure on $\mathbb{R}_+ \times \mathbb{R}$, ν is a predictable compensator of μ with $\nu(ds, dx) = ds \otimes F(dx)$ (where F is a σ -finite measure), $f * \mu_t = \int_0^t \int_{\mathbb{R}} f(s, x) \mu(ds, dx)$ and the process δ is predictable and $\sup_{x \in \mathbb{R}} |\delta(s, x) \wedge 1| / \gamma(z)$ is locally bounded for some bounded function γ in $\mathbb{L}^2(\mathbb{R}, F)$. The noise process U is assumed to satisfy the conditions (2.3) and (2.4).

Below we present the asymptotic results for C_t^n derived in Jacod, Podolskij, and Vetter (2009).

Theorem 4.1 *Assume that the process $N_t(2)$ is locally bounded. Then, we have, for any $t > 0$,*

$$C_t^n \xrightarrow{\mathbb{P}} [X]_t = \int_0^t \sigma_u^2 du + \sum_{u \leq t} |\Delta X_u|^2, \quad (4.27)$$

where $\Delta X_u = X_u - X_{u-}$. If moreover $N_t(8)$ is locally bounded, we obtain the stable convergence in law

$$\Delta_n^{1/4} (C_t^n - [X]_t) \xrightarrow{st} MN(0, \Gamma_t + \bar{\Gamma}_t), \quad (4.28)$$

for any $t > 0$. The process Γ_t is given in Theorem 2.3 and $\bar{\Gamma}_t$ is defined as

$$\bar{\Gamma}_t = \frac{4}{\psi_2^2} \sum_{T_m \leq t} |\Delta X_{T_m}|^2 \left(\theta \Phi_{22}(\sigma_{T_m-}^2 + \sigma_{T_m}^2) + \frac{\Phi_{12}}{\theta} (\alpha_{T_m-}^2 + \alpha_{T_m}^2) \right), \quad (4.29)$$

where $(T_m)_{m \geq 1}$ are jump times of X , $\Delta X_s = X_s - X_{s-}$ and the quantities ψ_2 , Φ_{12} , Φ_{22} are given in Section 2.2.

Proof: See Theorem 3.4 and Theorem 4.6 in Jacod, Podolskij, and Vetter (2009). \square

Observe that C_t^n remains a $\Delta_n^{-1/4}$ -consistent estimator of $[X]_t$ in the discontinuous case. In fact, the consistency result of Theorem 4.1 also holds true for non-equidistant observations.

In contrast to the continuous case we obtain an additional term $\bar{\Gamma}_t$ in the conditional variance of C_t^n . In order to derive a feasible version of the stable convergence in (4.28), we need to construct a consistent estimator of $\bar{\Gamma}_t$. This turns out to be a complicated problem, because we obviously require jump robust local estimators of σ_u^2 , α_u^2 and the left limits σ_{u-}^2 , α_{u-}^2 . The jump robust estimation methods are presented in the next subsection.

4.1 Jump Robust Estimation Methods

For various problems in finance it is extremely important to separate the diffusive part from the jump part. In a noise-free framework, a well-known approach to obtain jump robust estimators of (a functional of) volatility is the multipower variation (see, e.g., Barndorff-Nielsen, Shephard, and Winkel (2006)). The main idea of constructing jump robust estimators for models with microstructure noise is combining the multipower variation approach with the pre-averaging method. A rigorous mathematical theory for pre-averaged multipower variation has been derived in Podolskij and Vetter (2009). Below we recall the consistency results as derived in the aforementioned paper.

We define the pre-averaged multipower variation as

$$V(Z, p_1, \dots, p_l)_t^n = \sum_{i=0}^{\lfloor t/\Delta_n \rfloor - lk_n + 1} |\bar{Z}_i^n|^{p_1} |\bar{Z}_{i+k_n}^n|^{p_2} \dots |\bar{Z}_{i+(l-1)k_n}^n|^{p_l}, \quad (4.30)$$

and set $p^+ = \sum_{k=1}^l p_k$. The asymptotic behaviour of $V(Z, p_1, \dots, p_l)_t^n$ is given in the following theorem.

Theorem 4.2 *Assume that $Z = X + U$, X satisfies (4.26) and $N_t(2p^+)$ is locally bounded. If $\max(p_1, \dots, p_l) < 2$ then we deduce that*

$$\Delta_n^{1 - \frac{p^+}{4}} V(Z, p_1, \dots, p_l)_t^n \xrightarrow{\mathbb{P}} m_{p_1} \dots m_{p_l} \int_0^t (\theta \psi_2 \sigma_u^2 + \frac{1}{\theta} \psi_1 \alpha_u^2)^{\frac{p^+}{2}} du, \quad (4.31)$$

where $m_p = \mathbb{E}[|N(0, 1)|^p]$. In particular, $V(Z, p_1, \dots, p_l)_t^n$ is robust to the presence of jumps when $\max(p_1, \dots, p_l) < 2$.

Proof: See Theorem 2(ii) in Podolskij and Vetter (2009). \square

Note that $V(Z, p_1, \dots, p_l)_t^n$ is a class of jump robust biased measures of $\int_0^t |\sigma_u|^{p^+} du$ when $\max(p_1, \dots, p_l) < 2$. If p^+ is an even number we are able to bias-correct our statistic to obtain consistent estimators of $\int_0^t |\sigma_u|^{p^+} du$. In particular, we can estimate the quadratic variation of the jump part and the quadratic variation of the continuous part separately.

Corollary 4.3 *Assume that the conditions of Theorem 4.2 are satisfied. Then, we obtain that*

$$BT_t^n := \frac{\sqrt{\Delta_n}}{\theta m_1^2 \psi_2} V(Z, 1, 1)_t^n - \frac{\psi_1 \Delta_n}{2\theta^2 \psi_2} RV_t^n \xrightarrow{\mathbb{P}} IV_t,$$

$$BTV_t^n := \frac{\sqrt{\Delta_n}}{\theta \psi_2} (V(Z, 2)_t^n - m_1^{-2} V(Z, 1, 1)_t^n) \xrightarrow{\mathbb{P}} \sum_{u \leq t} |\Delta X_s|^2.$$

In finite samples it is again better to replace the constants ψ_1, ψ_2 by their empirical counterparts $\psi_1^{k_n}, \psi_2^{k_n}$ and to standardize the statistic $V(Z, p_1, \dots, p_l)_t^n$ by $[t/\Delta_n]/([t/\Delta_n] - lk_n + 2)$ to account for the true number of summands. This leads to the corresponding estimators $BT_{t,a}^n$ and $BTV_{t,a}^n$.

Figure 19 shows the sensitivity of the estimated (averaged) jump proportion $BTV_{t,a}^n/C_{t,a}^n$ to the choice of θ . In general, we observe that for moderate values of θ , the jump proportion is quite insensitive to the choice of θ . Only in cases where θ becomes too small, the ratio jumps up to unrealistically high values. For the liquid stocks, the jump proportion tends to stabilize for values of θ around 0.4 to 0.6. For the less liquid stocks, we observe a stabilization around 1.0. These values are quite similar to the optimal choices θ^* confirming also the usefulness of the MSE minimization approach above. The fact that the jump proportion strongly increases for small θ shows that the estimator $BTV_{t,a}^n$ is upward biased if the local pre-averaging window is chosen to small.

Figure 20 shows the time series distribution of the estimated jump proportions for optimal choices of θ . It turns out that 3 sec CTS implies generally higher jump proportions. This is particularly evident for the less liquid stocks yielding jump proportions of up to 25% on average (see Tables 5 to 10). Hence, this sampling scheme (at least based on very high frequencies) seems to be particularly sensitive to jumps providing unrealistically high values for $BTV_{t,a}^n$. Conversely, TTS and TRTS yield fairly stable jump proportions between 5% and 10% across the whole sample. Hence, event time sampling seems to be more appropriate and more natural for estimating jump components.

4.2 Estimation of the Conditional Variance and a Feasible Central Limit Theorem

The jump robust methods presented in the previous subsection open up a way to estimate the conditional variance in (4.28). Recall that the main difficulty is the estimation of the term

$$\bar{\Gamma}_t = \frac{4}{\psi_2^2} \sum_{T_m \leq t} |\Delta X_{T_m}|^2 \left(\theta \Phi_{22}(\sigma_{T_m-}^2 + \sigma_{T_m}^2) + \frac{\Phi_{12}}{\theta} (\alpha_{T_m-}^2 + \alpha_{T_m}^2) \right),$$

defined in (4.29).

We start with the local estimates of α^2 and σ^2 , where we first concentrate on the process α^2 . Consider a sequence of integers r_n with $r_n \rightarrow \infty$ and $r_n \Delta_n \rightarrow 0$. Define $J_{i+} = \{i+1, \dots, i+r_n\}$, $J_{i-} = \{i-r_n+1, \dots, i\}$ and

$$\hat{\alpha}_{i\Delta_n-}^2 = \frac{1}{2r_n} \sum_{l \in J_{i-}} |\Delta_l^n Z|^2, \quad \hat{\alpha}_{i\Delta_n+}^2 = \frac{1}{2r_n} \sum_{l \in J_{i+}} |\Delta_l^n Z|^2. \quad (4.32)$$

Obviously, $\hat{\alpha}_{i\Delta_n-}^2$ and $\hat{\alpha}_{i\Delta_n+}^2$ are the local analogues of RV_t^n . Since the process α^2 is assumed to be càdlàg, $\hat{\alpha}_{i\Delta_n-}^2$ and $\hat{\alpha}_{i\Delta_n+}^2$ are obviously good estimates of $\alpha_{i\Delta_n-}^2$ and $\alpha_{i\Delta_n+}^2$, respectively (this is justified by the local version of the convergence in (2.11)).

The construction of the local estimates for the process σ^2 is more complicated and is mainly based on the local version of Corollary 4.3. Consider a sequence of integers \bar{r}_n with $\bar{r}_n \rightarrow \infty$, $\bar{r}_n \sqrt{\Delta_n} \rightarrow \infty$ and $\bar{r}_n \Delta_n \rightarrow 0$. Define \bar{J}_{i+} , \bar{J}_{i-} as before (with r_n replaced by \bar{r}_n)

and set

$$\hat{\sigma}_{i\Delta_n-}^2 = \frac{1}{m_1^2 \bar{r}_n} \sum_{l \in \bar{J}_{i-}} \left(\frac{\Delta_n^{-1/2}}{\theta \psi_2} |\bar{Z}_i^n| |\bar{Z}_{l-k_n}^n| - \frac{\psi_1}{\theta^2 \psi_2} \hat{\alpha}_{i\Delta_n-}^2 \right), \quad (4.33)$$

$$\hat{\sigma}_{i\Delta_n+}^2 = \frac{1}{m_1^2 \bar{r}_n} \sum_{l \in \bar{J}_{i+}} \left(\frac{\Delta_n^{-1/2}}{\theta \psi_2} |\bar{Z}_i^n| |\bar{Z}_{l+k_n}^n| - \frac{\psi_1}{\theta^2 \psi_2} \hat{\alpha}_{i\Delta_n+}^2 \right). \quad (4.34)$$

Note that $\hat{\sigma}_{i\Delta_n-}^2$ and $\hat{\sigma}_{i\Delta_n+}^2$ are local analogues of the statistic BT_t^n defined in Corollary 4.3. The numbers \bar{r}_n must be of higher order than $\Delta_n^{-1/2}$, because otherwise all summands in (4.33) (resp. (4.34)) are strongly correlated.

Our first consistency result is the following theorem.

Theorem 4.4 *Assume that the process $N_t(8)$ is locally bounded. Then, it holds*

$$\begin{aligned} \Lambda_t^n &= \frac{\sqrt{\Delta_n}}{\theta \psi_2} \sum_{i=0}^{\lfloor t/\Delta_n \rfloor - k_n + 1} |\bar{Z}_i^n|^2 \left(\theta \Phi_{22} (\hat{\sigma}_{i\Delta_n-}^2 + \hat{\sigma}_{i\Delta_n+}^2) + \frac{\Phi_{12}}{\theta} (\hat{\alpha}_{i\Delta_n-}^2 + \hat{\alpha}_{i\Delta_n+}^2) \right) \\ &\xrightarrow{\mathbb{P}} \sum_{T_m \leq t} |\Delta X_{T_m}|^2 \left(\theta \Phi_{22} (\sigma_{T_m-}^2 + \sigma_{T_m}^2) + \frac{\Phi_{12}}{\theta} (\alpha_{T_m-}^2 + \alpha_{T_m}^2) \right) \\ &\quad + \frac{1}{\theta \psi_2} \int_0^t \left(\theta \psi_2 \sigma_u^2 + \frac{\psi_1}{\theta} \alpha_u^2 \right) \left(2\theta \Phi_{22} \sigma_u^2 + \frac{2\Phi_{12}}{\theta} \alpha_u^2 \right) du. \end{aligned}$$

Proof: Following the ideas of Theorem 3.1 in Jacod, Podolskij, and Vetter (2009) we immediately deduce that

$$\begin{aligned} \Lambda_t^n &= \frac{\sqrt{\Delta_n}}{\theta \psi_2} \sum_{i=0}^{\lfloor t/\Delta_n \rfloor - k_n + 1} |\bar{Z}_i^n|^2 \left(\theta \Phi_{22} (\sigma_{i\Delta_n-}^2 + \sigma_{i\Delta_n}^2) + \frac{\Phi_{12}}{\theta} (\alpha_{i\Delta_n-}^2 + \alpha_{i\Delta_n}^2) \right) \\ &\xrightarrow{\mathbb{P}} \sum_{T_m \leq t} |\Delta X_{T_m}|^2 \left(\theta \Phi_{22} (\sigma_{T_m-}^2 + \sigma_{T_m}^2) + \frac{\Phi_{12}}{\theta} (\alpha_{T_m-}^2 + \alpha_{T_m}^2) \right) \\ &\quad + \frac{1}{\theta \psi_2} \int_0^t \left(\theta \psi_2 \sigma_u^2 + \frac{\psi_1}{\theta} \alpha_u^2 \right) \left(2\theta \Phi_{22} \sigma_u^2 + \frac{2\Phi_{12}}{\theta} \alpha_u^2 \right) du, \end{aligned}$$

since α^2 and σ^2 are càdlàg processes. The convergence readily follows, because

$$\hat{\sigma}_{i\Delta_n-}^2 - \sigma_{i\Delta_n-}^2 = o_{\mathbb{P}}(1), \quad \hat{\sigma}_{i\Delta_n+}^2 - \sigma_{i\Delta_n}^2 = o_{\mathbb{P}}(1), \quad \hat{\alpha}_{i\Delta_n-}^2 - \alpha_{i\Delta_n-}^2 = o_{\mathbb{P}}(1), \quad \hat{\alpha}_{i\Delta_n+}^2 - \alpha_{i\Delta_n}^2 = o_{\mathbb{P}}(1)$$

uniformly in i . \square

The actual number of summands in the definition of Λ_t^n depends on the particular choice of the sequences r_n and \bar{r}_n . Note that Λ_t^n itself is not a consistent estimator of the conditional variance in (4.28). However, a particular linear combination of Λ_t^n and the three summands in the definition of Γ_t^n (see Proposition 2.4) yields a consistent estimator of $\Gamma_t + \bar{\Gamma}_t$. For the sake of simplicity we propose such an estimator only for our canonical choice $g(x) = x \wedge (1 - x)$.

Proposition 4.5 *Assume that $g(x) = x \wedge (1-x)$ and the process $N_t(8)$ is locally bounded. Then, it holds*

$$\begin{aligned} \tilde{\Gamma}_t^n &= A\Lambda_t^n + B\frac{m_4}{m_3^{3/4}} \sum_{i=0}^{\lfloor t/\Delta_n \rfloor - 3k_n} |\bar{Z}_i^n|^{4/3} |\bar{Z}_{i+k_n}^n|^{4/3} |\bar{Z}_{i+2k_n}^n|^{4/3} \\ &+ \frac{C}{m_1^2} \Delta_n \sum_{i=0}^{\lfloor t/\Delta_n \rfloor - 2k_n} |\bar{Z}_i^n| |\bar{Z}_{i+k_n}^n| \sum_{j=i+k_n+1}^{i+2k_n} |\Delta_j^n Z|^2 \\ &+ D\Delta_n \sum_{i=1}^{\lfloor t/\Delta_n \rfloor - 2} |\Delta_i^n Z|^2 |\Delta_{i+2}^n Z|^2 \xrightarrow{\mathbb{P}} \Gamma_t + \bar{\Gamma}_t, \end{aligned}$$

with

$$\begin{aligned} A &= \frac{4}{\psi_2^2}, \quad B = -\frac{4\Phi_{22}}{3\theta\psi_2^4}, \quad C = \frac{4\Phi_{22}}{(\theta\psi_2)^3} \left(\frac{1}{\psi_2^2} - \frac{\psi_1}{\psi_2} \right), \\ D &= \frac{1}{4} \left(\frac{4\Phi_{11}}{\theta^3\psi_2^2} - \frac{2\psi_1\Phi_{12}A}{\theta^3\psi_2} - \frac{3\psi_1^2B}{\theta^2} - 2\psi_1C \right), \end{aligned}$$

where the constants Φ_{ij} , $1 \leq i, j \leq 2$, are explicitly given in Example 2.2. In particular, we deduce that

$$\frac{\Delta_n^{1/4}(C_t^n - [X]_t)}{\sqrt{\tilde{\Gamma}_t^n}} \xrightarrow{d} N(0, 1).$$

Proof: The central limit theorem follows immediately by the properties of stable convergence. To obtain the consistency of the estimator $\tilde{\Gamma}_t^n$ we note that

$$\Delta_n \sum_{i=1}^{\lfloor t/\Delta_n \rfloor - 2} |\Delta_i^n Z|^2 |\Delta_{i+2}^n Z|^2 \xrightarrow{\mathbb{P}} 4 \int_0^t \alpha_u^4 du, \quad k_n^{-1} \sum_{j=i+k_n+1}^{i+2k_n} |\Delta_j^n Z|^2 - 2\alpha_{(i+k_n)\Delta_n}^2 = o_{\mathbb{P}}(1)$$

uniformly in i . Now, the convergence $\tilde{\Gamma}_t^n \xrightarrow{\mathbb{P}} \Gamma_t + \bar{\Gamma}_t$ follows from Theorem 4.2 (with $p_1 = p_2 = p_3 = 4/3$ and $q_1 = q_2 = 1$) and Theorem 4.4. \square

The constants ψ_i , Φ_{ij} should be replaced by their empirical analogues $\psi_i^{k_n}$, $\Phi_{ij}^{k_n}$ (see Section 2.3) to achieve better finite sample performance.

Finally, note that the estimator $\tilde{\Gamma}_t^n$ is not necessarily positive. The constant B , for instance, is negative for any weight function g . However, we obtain a positive consistent estimator of $\Gamma_t + \bar{\Gamma}_t$ by setting

$$\hat{\Gamma}_t^n = \max(\tilde{\Gamma}_t^n, \Gamma_t^n) \geq 0,$$

where Γ_t^n is a positive consistent estimator of Γ_t defined in Proposition 2.4. Since $\Gamma_t + \bar{\Gamma}_t \geq \Gamma_t$, $\hat{\Gamma}_t^n$ is a consistent estimator of $\Gamma_t + \bar{\Gamma}_t$.

5 Time Series Properties and the Impact of Sampling Frequencies and Sampling Schemes

Figures 21 to 24 show the averaged pre-averaging estimates for an optimal choice of θ and different sampling frequencies Δ_n using T(R)TS and CTS. As benchmarks we also

report the realized variance estimator (RV), the 10 min sub-sampled RV estimator (RV10) and the realized kernel (RK) estimator. We observe the well-known bias of the realized variance estimator when the sampling frequency becomes high. Not surprisingly, this is particularly evident in case of midquote change sampling for which the serial dependence in underlying returns is comparably high. We can summarize the following main findings: First, confirming the results above, the estimator tends to be downward biased if the sampling frequency is too low. Second, the finite-sample adjustment is particularly important. Without this adjustment the estimator becomes strongly negatively biased even for high sampling frequencies. Third, CTS induces stronger negative biases for low sampling frequencies than T(R)TS. This implication is also true for the realized kernel suffering from significantly negative biases if Δ_n becomes large. Fourth, we observe slightly less biases of the pre-averaging estimator in case of mid-quote sampling than based on price sampling. This is particularly true for event time sampling while in case of CTS, the estimates seem to be less dependent on the price information. Fifth, as shown above, based on very high sampling frequencies the pre-averaging estimator seems to be slightly less biased than the realized kernel. Conversely, for lower sampling frequencies, the realized kernel estimator tends to be more stable.

Figures 25 and 26 show the optimal choices of θ and k_n based on MSE minimization in dependence of the sampling frequency Δ_n . Overall, θ^* is higher if the underlying sampling frequency is lower. Nevertheless, we observe a non-monotonous relationship between θ^* and Δ_n particularly if Δ_n is small. This is quite distinct for the more liquid assets yielding the smallest values of θ^* for Δ_n being approximately 10. However, overall, these relationships imply a monotonously declining relationship between the resulting window size k_n^* and the sampling frequency Δ_n .

Barndorff-Nielsen, Hansen, Lunde, and Shephard (2008) suggest evaluating an estimator's performance based on its ability to produce similar daily quadratic variation estimates irrespective of the employed underlying intraday price information. In particular, an estimator is 'good' if it produces the same estimate irrespective of whether transaction prices or midquotes are used. They propose regressing the daily estimates of competing estimators on each other and evaluating the distance of the resulting regression line to the 45 degree line. This motivates computing the Euclidean distance to unity as

$$D_t(IV_t) = \sqrt{(IV_t^1 - \bar{IV}_t)^2 + (IV_t^2 - \bar{IV}_t)^2}, \quad (5.35)$$

where IV_t^1 and IV_t^2 are competing estimators for the integrated variation and \bar{IV}_t is the average of both. Table 2 shows the average values of $D_t(\cdot)$ for the estimators C_t^n , $C_{t,a}^n$, $C_{t,a}^n(1)$ and RK . Table 3 gives the corresponding relative measures relative to the distances implied by $C_{t,a}^n$, i.e. $D_t(\cdot)/D_t(C_{t,a}^n)$. The upper panels evaluate price-based versus midquote-based estimators based on T(R)TS and 3 sec CTS. It turns out that $C_{t,a}^n$ performs best based on T(R)TS whereas RK performs best in case of CTS. However, the latter is only true for the more liquid stocks whereas for the less liquid assets the realized kernel's performance is significantly worse. The lower panels in both tables give the corresponding statistics if 3 sec CTS is evaluated against T(R)TS. In this case, $C_{t,a}^n$ outperforms all competing estimators in nearly all cases. The overall worst performance is revealed by C_t^n indicating again the importance of finite-sample adjustments. This is particularly evident when the relative performance in relation to that of $C_{t,a}^n$ is analyzed (see Table 3). Interestingly, the dependent-noise-robust estimator $C_{t,a}^n(1)$ is quite sensitive to the choice of the underlying sampling scheme. This is particularly true in case T(R)TS and is obviously induced by the highly negative serial correlation in midquote change

returns. This confirms the results from the previous section and shows that $C_{t,a}^n$ is not able to accommodate serial dependencies in the noise process very well and yields quite different quadratic variation estimates in dependence of the underlying price information. Interestingly, this is mostly evident in case of TTS or TRTS whereas in case of CTS, the performance of $C_{t,a}^n$ and $C_{t,a}^n(1)$ is quite similar.

To obtain a universal comparison of the estimators based on all four sampling schemes employed in this paper, we compute the corresponding Euclidean distance

$$\tilde{D}_t(IV_t) = \sqrt{\sum_{j=1}^4 (IV_t^j - \bar{IV}_t)^2}, \quad (5.36)$$

where IV_t^j , $j = 1, \dots, 4$, represent the corresponding estimators based on TRTS, TTS and 3 sec price-based and midquote-based CTS. The corresponding (relative) averages are reported by Table 4, whereas the empirical distributions are depicted by Figures 27 and 28. It is shown that on average $C_{t,a}^n$ outperforms all other estimators, and thus provides the strongest robustness to the underlying sampling scheme. This is also confirmed by Figures 27 and 28 showing that $C_{t,a}^n$ and RK reveal the lowest (time series) dispersion and thus the greatest performance stability over time. Conversely, C_t^n and $C_{t,a}^n(1)$ reveal significantly higher time series variations of $\tilde{D}_t(\cdot)$. This indicates that these estimators are quite sensitive to the underlying sampling scheme on specifically 'bad' days. As revealed by the relative Euclidean statistics (relative to those of $C_{t,a}^n$), the relative discrepancies become smaller for more illiquid stocks.

Figure 29 shows the time series variation of daily quadratic variation estimates for all stocks computed based on $C_{t,a}^n$ using TRTS. As depicted by the corresponding (jump robust) 95% confidence intervals, estimation error is still not negligible in most cases. Figure 17 shows the distributions of the percentage deviations between $\Gamma_{t,a}^n$ and $\hat{\Gamma}_{t,a}^n$ reflecting differences in estimation errors due to the inclusion of jumps. We observe standard deviations which are on average up to 10%-20% higher in case of jumps. This translates back into 95% confidence intervals which are 14% wider on average. Figure 30 graphically illustrates these differences for the first 20 trading days in the sample.

Analyzing major descriptive statistics of the analyzed estimators in Tables 5 to 10 we observe that all estimators are significantly serially autocorrelated with first order autocorrelations around 0.4 to 0.6 for the liquid assets and around 0.2 to 0.3 for the less liquid ones. In general, both the dynamic as well as the distributional properties of the pre-averaging estimators are quite similar to that of the realized kernel. We find the well-known result that the distribution of log volatilities is close to that of a normal distribution with a kurtosis ranging around 3 in most cases. Only in case of the less liquid stocks we observe evidence for significant over-kurtosis. For both type of estimators the empirical properties are quite independent of the underlying sampling scheme. Only in case of neglected finite-sample adjustments (i.e., C_t^n and $C_t^n(1)$) the estimators' properties are obviously quite sensitive to the sampling scheme. This is particularly evident for C_t^n in case of TTS.

Finally, Figures 31 and 32 show the time series variation of the jump proportion $BTV_{t,a}^n/C_{t,a}^n$ and the test statistic S_n . We observe that both statistics can vary substantially across days. While for the jump proportion no systematic daily serial dependence over the cross-section of stocks can be reported, we observe a slight daily clustering of S_n and thus of serial dependence in noise.

6 Conclusions

In this paper, we discussed the class of pre-averaging estimators for quadratic variation in asset prices and extended existing theory to explicitly test for serial dependence in noise and to compute jump robust inference. In an extensive empirical study we analyzed the empirical properties of different pre-averaging estimators in dependence of the choice of the pre-averaging interval, the sampling scheme, the underlying sampling frequency and the impact of noise. We can summarize the following major results:

First, the pre-averaging estimator is sensitive to the choice of the pre-averaging parameter θ . This sensitivity seems to be strongest on days where the underlying price path is not sufficiently smooth. As a result, for too small and too large values of θ , the estimator tends to be negatively biased on average.

Second, choosing θ by minimizing the MSE based on a sub-sampled 10 min realized variance estimator seems to be a reasonable data-driven strategy and results in an estimator with good empirical properties. In case of a data-independent choice of θ , we suggest values between 0.4 to 0.8 as a good rule of thumb. In general, the choice of θ decreases with the sampling frequency.

Third, finite sample adjustments of the estimator are particularly important in order to reduce significant biases. This is particularly true if θ is chosen to be small and if the sampling frequency is not sufficiently high. As a result, even for very liquid stocks, event time sampling is not sufficiently frequent to reduce this bias. Conversely, high-frequency CTS implies significantly less sensitivity due to finite-sample adjustments.

Fourth, ignoring the possibility of jumps in the price process leads to an under-estimation of 95% confidence intervals of approximately 15% on average and thus understating estimation errors. Pre-averaging multi-power estimators are quite sensitive to the underlying sampling scheme and the choice of θ . This is particularly true for CTS inducing an over-estimation of the relative component of jumps in daily quadratic variations. For MSE minimal choices of θ , we find jump proportions between 5% and 10% on average.

Fifth, it is strongly suggested to implement both pre-averaging and kernel estimators based on a highest possible sampling frequency. Our empirical findings show that a reduction in sampling frequency tends to imply an 'oversmoothing' of volatilities resulting in negative biases.

Sixth, pre-averaging estimators are widely unaffected by the choice of the underlying sampling scheme. Comparing the different estimators in terms of their ability to produce similar estimates of the daily quadratic variation irrespective of the underlying sampling scheme and the employed price information, we show that the standard version of the pre-averaging estimator slightly outperforms all estimators in nearly all cases. In conclusion, for this estimator, the choice between event time sampling and calendar time sampling does not yield significantly different results (given that the ultimate sampling frequency is similar and high). Conversely, the noise-dependent robust version of the pre-averaging estimator turns out to be quite sensitive yielding different estimates in dependence of the underlying price information and sampling scheme. Consequently, we conclude that the specific adjustment for serially dependent noise tends to be rather unstable in practice.

Seventh, the quantification of serial dependence in noise strongly depends on the underlying sampling scheme. Strong evidence for serially dependent noise processes is shown based on mid-quote change sampling. Conversely, for the other sampling schemes, partic-

ularly CTS, these effects are significantly weaker and virtually not significant.

7 Appendix

Data Cleaning

In line with Barndorff-Nielsen, Hansen, Lunde, and Shephard (2008) we perform the following data cleaning steps:

- (i) Delete entries outside the 9:30pm and 4pm time window.
- (ii) Delete entries with a quote or transaction price equal to be zero.
- (iii) Delete all entries with negative prices or quotes.
- (iv) Delete all entries with negative spreads.
- (v) Delete entries whenever the price is outside the interval $[bid - 2 \cdot spread ; ask + 2 \cdot spread]$.
- (vi) Delete all entries with the spread greater or equal than 50 times the median spread of that day.
- (vii) Delete all entries with the price greater or equal than 5 times the median mid-quote of that day.
- (viii) Delete all entries with the mid-quote greater or equal than 10 times the mean absolute deviation from the local median mid-quote.
- (ix) Delete all entries with the price greater or equal than 10 times the mean absolute deviation from the local median mid-quote.

Implementation Details for the Different Estimators

The *realized kernel estimator* (*RK*) proposed by Barndorff-Nielsen, Hansen, Lunde, and Shephard (2008) is defined by

$$K(Z_\Delta) = \gamma_0(Z_\Delta) + \sum_{h=1}^H k\left(\frac{h-1}{H}\right) \{\gamma_h(Z_\Delta) + \gamma_{-h}(Z_\Delta)\},$$

where $\gamma_h(Z_\Delta)$ denotes the h -th realized autocovariance given by

$$\gamma_h(Z_\Delta) = \sum_{j=1}^{\lfloor t/\Delta_n \rfloor} (Z_{i\Delta_n} - Z_{(i-1)\Delta_n})(Z_{(i-h)\Delta_n} - Z_{(i-h-1)\Delta_n})$$

with $h = -H, \dots, -1, 0, 1, \dots, H$ and $k(\cdot)$ denoting the kernel function to be chosen as the Tukey-Hanning₂ kernel with

$$k(x) = \sin^2\{\pi/2(1-x)^2\}.$$

Moreover, define

$$\zeta_t^2 = \bar{\alpha}_t^2 / \sqrt{t \int_0^t \sigma_u^4 du}.$$

Then, the optimal choice of the bandwidth, H , is given by

$$H = c\zeta_t \sqrt{[t/\Delta]}$$

with $c = 5.74$ for the Tukey-Hanning₂ kernel.

To estimate $\int_0^t \sigma_u^4 du$ we use (2.16) with $a = 1$, $b = c = 0$. To estimate $\bar{\alpha}_t^2$, Barndorff-Nielsen, Hansen, Lunde, and Shephard (2008) suggest

$$\hat{\alpha}^2 = \frac{1}{q} \sum_{i=1}^q \hat{\alpha}_{(i)}^2$$

with

$$\hat{\alpha}_{(i)}^2 = \frac{RV_{(i)}^n}{2\tilde{n}_{(i)}}, \quad i = 1, \dots, q,$$

and $RV_{(i)}^n$, $i = 1, \dots, q$ are realized variance estimators $RV_{(i)}^n = \sum_{j=i}^n |\Delta_i^n Z|^2$ sampling every $q = N/n$ -th trade using the first q trades per day as different starting points and $\tilde{n}_{(i)}$ denoting the number of non-zero returns that were used to compute $RV_{(i)}^n$. To robustify this estimator against serial dependence in the noise process, Barndorff-Nielsen, Hansen, Lunde, and Shephard (2008) propose using q such that every q -th observation is, on average, 2 minutes apart. As discussed by the authors and also found in this study, this estimator is likely to be upward biased and thus yields a relatively conservative choice of the bandwidth.

Note that the realized kernel estimator is computed without accounting for end effects, i.e., replacing the first and last observation by local averages to eliminate the corresponding noise components ('jittering' according to Barndorff-Nielsen, Hansen, Lunde, and Shephard (2008)). Barndorff-Nielsen, Hansen, Lunde, and Shephard (2008) argue that these effects are theoretically important however practically negligible, particularly for actively traded assets.

The *maximum likelihood estimator (MLRV)* proposed by Ait-Sahalia, Mykland, and Zhang, L. (2005) is given by

$$MLRV = N\hat{\delta}^2(1 + \hat{\theta})^2,$$

where N denotes the number of trades per day and $(\hat{\delta}^2, \hat{\theta})$ are the maximum likelihood estimates of an MA(1) model for observed trade-to-trade returns, $Z_i = \varepsilon_i + \theta\varepsilon_{i-1}$, with ε_i being white noise with variance δ^2 and $-1 < \theta < 0$. This model suggests an alternative estimator of the market microstructure noise variance given by

$$\hat{\alpha}^2 = -\hat{\theta}\hat{\delta}^2.$$

As a further benchmark estimator we use a sparsely sub-sampled *realized variance estimator (RV10)* which is computed as the average of 100 realized variance estimators using 10min returns starting at 100 different equi-distant start points across the first 10

trading minutes. To account for the fact that the estimators use different starting points, the daily estimates are accordingly scaled.

Hence, in case of aggregated sampling if $N/n > 1$ and being not an integer, the last return per day is computed by aggregating over less than $[N/n]$ observations. However, both theoretically and empirically this effect can safely be ignored.

Finally, for all estimators, the daily quadratic variation is computed starting at the first observation after 9:30 am. Hence, according to the timing of the first daily observation the time span over which the quadratic variation is computed, can differ. Since this affects all estimators similarly, this effect is not important in our study. In general, one can adjust for it by scaling the daily variance estimate according to the (ignored) time span between 9:30 am and the timing of the first observation.

References

- Aldous, D.J., Eagleson, G.K., 1978. On mixing and stability of limit theorems. *Annals of Probability* 6(2), 325–331.
- Ait-Sahalia, Y., Mykland, P., Zhang, L., 2005. How Often to Sample a Continuous-Time Process in the Presence of Market Microstructure Noise? *Review of Financial Studies* 18, 351–416.
- Andersen, T., Bollerslev, T., Diebold, F., Labys, P., 2001. The Distribution of Realized Exchange Rate Volatility. *Journal of the American Statistical Association* 96, 42–55.
- Andersen, T., Bollerslev, T., Diebold, F., Labys, P., 2003. Modeling and Forecasting Realized Volatility. *Econometrica* 71, 579–625.
- Andersen, T., Bollerslev, T., Diebold, F., 2008. Parametric and Nonparametric Measurement of Volatility. In Y. Ait-Sahalia and L.P. Hansen (Eds.), *Handbook of Financial Econometrics*. Amsterdam: North Holland.
- Barndorff-Nielsen, O., Shephard, N., 2002. Econometric Analysis of Realized Volatility and Its Use in Estimating Stochastic Volatility Models. *Journal of the Royal Statistical Society, Ser. B.* 64, 253–280.
- Barndorff-Nielsen, O.E., Graversen, S.E., Jacod, J., Podolskij, M., Shephard, N., 2006. A central limit theorem for realised power and bipower variations of continuous semimartingales. In: Yu. Kabanov, R. Liptser and J. Stoyanov (Eds.), *From Stochastic Calculus to Mathematical Finance. Festschrift in Honour of A.N. Shiryaev*, Heidelberg: Springer, 2006, 33–68.
- Barndorff-Nielsen, O.E., Hansen, P.R., Lunde, A., Shephard, N., 2008. Designing realised kernels to measure the ex-post variation of equity prices in the presence of noise. *Econometrica* 76(6), 1481–1536.
- Barndorff-Nielsen, O.E., Hansen, P.R., Lunde, A., Shephard, N., 2008. Realised Kernels in Practice: Trades and Quotes. *Econometrics Journal* 4, 1–32.
- Barndorff-Nielsen, O.E., Shephard, N., 2004. Power and bipower variation with stochastic volatility and jumps (with discussion). *Journal of Financial Econometrics* 2, 1–48.

- Barndorff-Nielsen, O.E., Shephard, N., Winkel, M., 2006. Limit theorems for multipower variation in the presence of jumps. *Stochastic Processes and their Applications*, 116, 796-806.
- Delbaen, F., Schachermayer, W., 1994. A general version of the fundamental theorem of asset pricing. *Mathematische Annalen*, 300, 463–520.
- Gloter, A., Jacod, J., 2001. Diffusions with measurement errors. II-Optimal estimators. *ESAIM*, 5, 243-260.
- Hautsch, N., Huang, R., 2009. The Market Impact of a Limit Order. Discussion Paper, 2009-51, CRC 649, Humboldt-Universität zu Berlin.
- Hansen, P. R., Lunde, A., 2006. Realized variance and market microstructure noise. *Journal of Business and Economic Statistics*, 24 (2), 127161.
- Jacod, J. (1994): Limit of random measures associated with the increments of a Brownian semimartingale. Preprint number 120, Laboratoire de Probabilités, Univ. P. et M. Curie.
- Jacod, J., 2008. Asymptotic properties of realized power variations and related functionals of semimartingales. *Stochastic Processes and their Applications*, 118, 517-559.
- Jacod, J., Li, Y., Mykland, P., Podolskij, M., Vetter, M., 2009. Microstructure noise in the continuous case: the pre-Averaging approach. *Stochastic Processes and Their Applications* 119, 2249-2276 .
- Jacod, J., Podolskij, M., Vetter, M., 2009. Limit theorems for moving averages of discretized processes plus noise. *Annals of Statistics* 38(3), 1478-1545.
- Jacod, J., Shiryaev, A. N., 2003. *Limit Theorems for Stochastic Processes*, 2d ed., Springer-Verlag: Berlin.
- Mancini, C., 2001. Disentangling the jumps of the diffusion in a geometric jumping Brownian motion. *Giornale dell'Istituto Italiano degli Attuari LXIV* 1947.
- Oomen, R. C. A., 2006. Comment on Hansen, P. R. and Lunde, A., 2006. Realized Variance and Market Microstructure Noise. *Journal of Business and Economic Statistics*, 24(2), 195-202.
- Oomen, R. C. A., 2006. Properties of Realized Variance Under Alternative Sampling Schemes. *Journal of Business and Economic Statistics*, 24(2), 219–237.
- Podolskij, M., Vetter, M., 2009. Estimation of volatility functionals in the simultaneous presence of microstructure noise and jumps. *Bernoulli*, 15(3), 634-658.
- Podolskij, M., Vetter, M., 2009. Bipower-type estimation in the noisy diffusion setting. *Stochastic Processes and Their Applications* 119, 2803-2831.
- Renyi, A., 1963. On stable sequences of events. *Sankhya A* 25, 293-302.
- Revuz, D., Yor, M., 1998. *Continuous martingales and Brownian motion*, 3d ed., Springer, New York.
- Zhang, L., Mykland, P.A., Aït-Sahalia, Y., 2005. A tale of two time scales: Determining integrated volatility with noisy high-frequency data. *Journal of the American Statistical Association* 100, 1394–1411.

Tables

Table 1: Summary statistics of the underlying data.

| | XOM | C | HD | TEK | SON | ZLC |
|--|-------|-------|-------|-------|-------|-------|
| Avg. time between trades (in secs) | 5.28 | 7.25 | 7.19 | 25.53 | 36.29 | 26.17 |
| Avg. time between quote arrivals (in secs) | 0.74 | 1.01 | 1.07 | 3.16 | 4.33 | 3.43 |
| Avg. time betw. non-zero quote chgs. (in secs) | 3.16 | 4.72 | 4.60 | 10.21 | 14.29 | 8.78 |
| Avg. number of trades | 4428 | 3227 | 3255 | 916 | 644 | 894 |
| Avg. number of quotes | 31758 | 23158 | 21964 | 7395 | 5405 | 6829 |
| Avg. proportion of non-zero trade returns | 0.73 | 0.58 | 0.60 | 0.63 | 0.62 | 0.67 |
| Avg. proportion of non-zero MQ returns | 0.23 | 0.21 | 0.23 | 0.31 | 0.30 | 0.39 |
| Avg. $\hat{\alpha}^2 \cdot 1e7$ | 0.10 | 0.03 | 0.08 | 0.99 | 0.91 | 1.30 |
| Avg. $\hat{\xi}$ | 0.40 | 0.18 | 0.25 | 0.37 | 0.38 | 0.33 |
| ACF(1) trade returns | 0.03 | -0.05 | -0.09 | 0.00 | -0.05 | -0.07 |
| ACF(1) MQ returns | -0.20 | -0.25 | -0.22 | -0.19 | -0.20 | -0.23 |
| ACF(1) non-zero MQ returns | -0.24 | -0.35 | -0.32 | -0.25 | -0.28 | -0.30 |
| ACF(1) 3 sec price returns | 0.01 | -0.10 | -0.15 | -0.03 | -0.08 | -0.10 |
| ACF(1) 3 sec MQ returns | -0.27 | -0.40 | -0.39 | -0.32 | -0.34 | -0.32 |

Note. The table reports (daily) averages of the time between trades, quote arrivals and non-zero quote changes, the number of trades and quotes, the proportions of non-zero trade (or mid-quote) returns, the (long-run) noise variance $\hat{\alpha}^2$, the (long-run) noise variance per trade $\hat{\xi}$ and first-order autocorrelations of underlying sampled returns.

Table 2: Euclidean distance discrepancy measures $D_t(\cdot)$

| | C_t^n | $C_{t,a}^n$ | $C_{t,a}^n(1)$ | RK | C_t^n | $C_{a,t}^n$ | $C_{t,a}^n(1)$ | RK |
|-----|--------------------------|-------------|----------------|------|-------------------------------|-------------|----------------|------|
| | TRTS PR vs. TTS MQ | | | | 3 sec CTS PR vs. 3 sec CTS MQ | | | |
| XOM | 1.86 | 0.33 | 1.18 | 0.29 | 0.32 | 0.25 | 0.24 | 0.17 |
| C | 1.04 | 0.22 | 0.77 | 0.26 | 0.43 | 0.32 | 0.32 | 0.22 |
| HD | 1.44 | 0.33 | 1.05 | 0.47 | 0.54 | 0.39 | 0.40 | 0.30 |
| TEK | 1.36 | 0.70 | 1.44 | 1.30 | 0.94 | 0.87 | 0.88 | 1.20 |
| SON | 1.13 | 0.65 | 1.54 | 1.06 | 0.79 | 0.68 | 0.69 | 1.57 |
| ZLC | 1.39 | 1.03 | 1.91 | 3.97 | 1.57 | 1.60 | 1.61 | 1.61 |
| | 3 sec CTS PR vs. TRTS PR | | | | 3 sec CTS MQ vs. TTS MQ | | | |
| XOM | 1.54 | 0.29 | 0.89 | 0.44 | 0.96 | 0.39 | 1.10 | 0.47 |
| C | 1.01 | 0.21 | 0.37 | 0.42 | 0.59 | 0.34 | 0.68 | 0.40 |
| HD | 1.68 | 0.36 | 0.66 | 0.67 | 1.10 | 0.57 | 1.15 | 0.64 |
| TEK | 1.61 | 0.79 | 1.07 | 1.24 | 1.50 | 1.04 | 1.26 | 1.22 |
| SON | 1.25 | 0.71 | 0.99 | 1.85 | 1.49 | 0.98 | 1.29 | 1.67 |
| ZLC | 2.36 | 1.99 | 2.10 | 5.03 | 2.68 | 2.18 | 2.87 | 2.12 |

Table 3: Relative Euclidean distance discrepancy measures $D_t(\cdot)/D_t(C_{t,a}^n)$.

| | C_t^n | $C_{t,a}^n$ | $C_{t,a}^n(1)$ | RK | C_t^n | $C_{a,t}^n$ | $C_{t,a}^n(1)$ | RK |
|-----|--------------------------|-------------|----------------|------|-------------------------------|-------------|----------------|------|
| | TRTS PR vs. TTS MQ | | | | 3 sec CTS PR vs. 3 sec CTS MQ | | | |
| XOM | 5.59 | 1.00 | 3.54 | 0.88 | 1.31 | 1.00 | 0.99 | 0.70 |
| C | 4.83 | 1.00 | 3.59 | 1.21 | 1.32 | 1.00 | 1.00 | 0.67 |
| HD | 4.37 | 1.00 | 3.17 | 1.44 | 1.39 | 1.00 | 1.04 | 0.77 |
| TEK | 1.95 | 1.00 | 2.06 | 1.86 | 1.08 | 1.00 | 1.01 | 1.38 |
| SON | 1.73 | 1.00 | 2.37 | 1.63 | 1.16 | 1.00 | 1.01 | 2.32 |
| ZLC | 1.35 | 1.00 | 1.85 | 3.85 | 0.98 | 1.00 | 1.01 | 1.01 |
| | 3 sec CTS PR vs. TRTS PR | | | | 3 sec CTS MQ vs. TTS MQ | | | |
| XOM | 5.31 | 1.00 | 3.05 | 1.50 | 2.53 | 1.00 | 3.17 | 1.26 |
| C | 4.71 | 1.00 | 1.73 | 1.97 | 1.81 | 1.00 | 2.66 | 1.33 |
| HD | 4.64 | 1.00 | 1.81 | 1.84 | 1.78 | 1.00 | 1.96 | 0.97 |
| TEK | 2.04 | 1.00 | 1.36 | 1.58 | 1.62 | 1.00 | 1.18 | 1.20 |
| SON | 1.77 | 1.00 | 1.41 | 2.61 | 1.78 | 1.00 | 1.65 | 0.99 |
| ZLC | 1.18 | 1.00 | 1.05 | 2.52 | 1.24 | 1.00 | 1.24 | 0.46 |

Table 4: (Relative) Euclidean distance discrepancy measures \tilde{D}_t and $\tilde{D}_t(\cdot)/\tilde{D}_t(C_{t,a}^n)$ based on TRTS PR, TTS MQ, 3 sec CTS PR and 3 sec CTS MQ.

| | \tilde{D}_t | | | | $\tilde{D}_t(\cdot)/\tilde{D}_t(C_{t,a}^n)$ | | | |
|-----|---------------|-------------|----------------|------|---|-------------|----------------|------|
| | C_t^n | $C_{t,a}^n$ | $C_{t,a}^n(1)$ | RK | C_t^n | $C_{t,a}^n$ | $C_{t,a}^n(1)$ | RK |
| XOM | 2.64 | 0.66 | 1.94 | 0.76 | 4.98 | 1.00 | 1.96 | 0.77 |
| C | 1.64 | 0.57 | 1.23 | 0.71 | 3.37 | 1.00 | 1.24 | 0.72 |
| HD | 2.70 | 0.92 | 1.83 | 1.11 | 3.78 | 1.00 | 1.85 | 1.13 |
| TEK | 2.87 | 1.75 | 2.38 | 2.53 | 2.09 | 1.00 | 2.41 | 2.56 |
| SON | 2.45 | 1.50 | 2.33 | 2.83 | 1.85 | 1.00 | 2.36 | 2.87 |
| ZLC | 5.21 | 4.39 | 5.32 | 6.26 | 1.44 | 1.00 | 5.38 | 6.33 |

Table 5: Summary statistics of all estimators and statistics for XOM

| | Mean | Median | Std.Dev. | ACF(1) | ACF(5) | ACF(10) | Skew | Kurt |
|--|--------|--------|----------|--------|--------|---------|-------|-------|
| C_t^n | | | | | | | | |
| TRTS | 16.20 | 15.79 | 5.72 | 0.23 | 0.17 | 0.00 | -0.49 | 2.78 |
| TTS | 17.12 | 16.96 | 5.50 | 0.25 | 0.35 | 0.03 | -6.17 | 39.55 |
| CTS PR | 17.74 | 17.30 | 4.46 | 0.41 | 0.39 | 0.10 | 0.30 | 2.74 |
| CTS MQ | 17.67 | 17.40 | 4.52 | 0.40 | 0.39 | 0.10 | 0.15 | 2.65 |
| $C_{t,a}^n$ | | | | | | | | |
| TRTS | 18.42 | 18.03 | 4.57 | 0.47 | 0.40 | 0.11 | 0.20 | 2.53 |
| TTS | 18.31 | 17.84 | 4.67 | 0.50 | 0.43 | 0.12 | 0.13 | 2.41 |
| CTS PR | 18.47 | 18.24 | 4.53 | 0.49 | 0.42 | 0.10 | 0.19 | 2.62 |
| CTS MQ | 18.50 | 18.12 | 4.51 | 0.53 | 0.42 | 0.09 | 0.12 | 2.50 |
| $C_t^n(1)$ | | | | | | | | |
| TRTS | 17.38 | 16.67 | 4.82 | 0.38 | 0.31 | 0.06 | 0.00 | 2.90 |
| TTS | 18.84 | 17.99 | 4.55 | 0.58 | 0.39 | 0.02 | 0.17 | 2.61 |
| CTS PR | 18.01 | 17.95 | 4.49 | 0.45 | 0.40 | 0.09 | 0.22 | 2.65 |
| CTS MQ | 18.03 | 17.94 | 4.50 | 0.47 | 0.40 | 0.09 | 0.12 | 2.56 |
| $C_{t,a}^n(1)$ | | | | | | | | |
| TRTS | 19.45 | 18.71 | 5.01 | 0.49 | 0.39 | 0.10 | 0.05 | 2.29 |
| TTS | 19.94 | 19.42 | 5.12 | 0.62 | 0.39 | 0.11 | 0.04 | 2.32 |
| CTS PR | 18.78 | 18.28 | 4.68 | 0.52 | 0.41 | 0.07 | 0.13 | 2.50 |
| CTS MQ | 18.91 | 18.38 | 4.62 | 0.57 | 0.43 | 0.08 | 0.08 | 2.40 |
| $RV10$ | | | | | | | | |
| TRTS | 18.57 | 18.38 | 4.77 | 0.45 | 0.39 | 0.10 | 0.23 | 2.50 |
| TTS | 18.54 | 18.26 | 4.79 | 0.46 | 0.39 | 0.10 | 0.24 | 2.48 |
| CTS PR | 18.57 | 18.38 | 4.77 | 0.45 | 0.39 | 0.10 | 0.23 | 2.50 |
| CTS MQ | 18.54 | 18.26 | 4.79 | 0.46 | 0.39 | 0.10 | 0.24 | 2.48 |
| $MLRV$ | | | | | | | | |
| TRTS | 17.87 | 16.82 | 4.34 | 0.67 | 0.49 | 0.07 | -0.10 | 3.02 |
| TTS | 16.19 | 15.25 | 4.30 | 0.72 | 0.56 | 0.18 | -0.08 | 2.60 |
| CTS PR | 17.87 | 16.82 | 4.34 | 0.67 | 0.49 | 0.07 | -0.10 | 3.02 |
| CTS MQ | 16.19 | 15.25 | 4.30 | 0.72 | 0.56 | 0.18 | -0.08 | 2.60 |
| KRV | | | | | | | | |
| TRTS | 19.44 | 18.78 | 4.57 | 0.56 | 0.47 | 0.16 | -0.09 | 2.70 |
| TTS | 19.52 | 18.90 | 4.71 | 0.56 | 0.42 | 0.12 | 0.01 | 2.68 |
| CTS PR | 19.41 | 19.02 | 4.54 | 0.58 | 0.49 | 0.17 | -0.08 | 2.67 |
| CTS MQ | 19.30 | 18.69 | 4.53 | 0.57 | 0.48 | 0.17 | -0.06 | 2.63 |
| $n^{-1/4} \sqrt{\Gamma_{t,a}^n}$ | | | | | | | | |
| TRTS | 1.43 | 1.17 | 0.85 | 0.57 | 0.42 | 0.20 | 0.94 | 3.25 |
| TTS | 1.34 | 1.04 | 0.81 | 0.32 | 0.47 | 0.28 | 1.10 | 3.31 |
| CTS PR | 1.28 | 1.09 | 0.85 | 0.35 | 0.33 | 0.31 | 1.69 | 6.62 |
| CTS MQ | 1.20 | 0.90 | 0.86 | 0.23 | 0.20 | 0.17 | 1.97 | 7.78 |
| $n^{-1/4} \sqrt{\Gamma_{t,a}^n(1)}$ | | | | | | | | |
| TRTS | 1.44 | 1.18 | 0.85 | 0.57 | 0.42 | 0.20 | 0.93 | 3.22 |
| TTS | 1.35 | 1.04 | 0.81 | 0.34 | 0.47 | 0.28 | 1.08 | 3.26 |
| CTS PR | 1.28 | 1.09 | 0.85 | 0.35 | 0.34 | 0.31 | 1.69 | 6.62 |
| CTS MQ | 1.21 | 0.90 | 0.85 | 0.23 | 0.20 | 0.17 | 1.97 | 7.80 |
| $n^{-1/4} \sqrt{\hat{\Gamma}_t^n}$ | | | | | | | | |
| TRTS | 1.60 | 1.22 | 1.00 | 0.47 | 0.30 | 0.10 | 1.05 | 3.56 |
| TTS | 1.38 | 1.05 | 0.85 | 0.30 | 0.43 | 0.23 | 1.14 | 3.47 |
| CTS PR | 1.47 | 1.16 | 1.08 | 0.31 | 0.27 | 0.22 | 1.72 | 6.37 |
| CTS MQ | 1.36 | 1.00 | 1.01 | 0.19 | 0.20 | 0.09 | 1.82 | 6.96 |
| θ^* | | | | | | | | |
| TRTS | 0.52 | 0.15 | 0.74 | -0.04 | -0.06 | 0.13 | 1.79 | 5.01 |
| TTS | 0.30 | 0.15 | 0.42 | 0.06 | 0.09 | -0.02 | 3.06 | 12.25 |
| CTS PR | 0.60 | 0.19 | 0.83 | 0.08 | 0.06 | 0.11 | 1.59 | 4.12 |
| CTS MQ | 0.45 | 0.19 | 0.57 | 0.05 | 0.00 | -0.08 | 1.47 | 3.74 |
| k | | | | | | | | |
| TRTS | 35.99 | 11.00 | 52.17 | -0.05 | -0.07 | 0.14 | 1.88 | 5.44 |
| TTS | 24.80 | 13.00 | 36.74 | 0.03 | 0.13 | -0.01 | 3.27 | 13.78 |
| CTS PR | 53.18 | 17.00 | 73.30 | 0.08 | 0.06 | 0.11 | 1.59 | 4.12 |
| CTS MQ | 39.64 | 17.00 | 50.12 | 0.05 | 0.00 | -0.08 | 1.47 | 3.74 |
| $BTV_{t,a}^n / C_{t,a}^n$ | | | | | | | | |
| TRTS | 0.09 | 0.08 | 0.07 | 0.23 | -0.04 | -0.08 | 0.30 | 1.98 |
| TTS | 0.17 | 0.14 | 0.13 | 0.03 | 0.04 | 0.01 | 1.48 | 5.75 |
| CTS PR | 0.11 | 0.08 | 0.11 | 0.16 | 0.05 | 0.03 | 1.03 | 2.76 |
| CTS MQ | 0.14 | 0.10 | 0.13 | -0.01 | 0.01 | 0.00 | 0.74 | 2.24 |
| S_n | | | | | | | | |
| TRTS | -4.87 | -4.76 | 2.19 | 0.15 | -0.10 | -0.12 | -1.41 | 7.40 |
| TTS | -11.59 | -11.87 | 3.38 | 0.44 | 0.33 | 0.22 | -0.28 | 3.88 |
| CTS PR | -3.67 | -3.82 | 2.00 | 0.36 | 0.09 | -0.43 | 0.21 | 2.45 |
| CTS MQ | -4.29 | -3.92 | 1.92 | 0.25 | 0.14 | -0.19 | -0.26 | 3.07 |
| $100 \cdot (C_{t,a}^n - C_{t,a}^n(1)) / C_{t,a}^n$ | | | | | | | | |
| TRTS | -5.60 | -1.03 | 9.71 | 0.11 | -0.02 | -0.05 | -1.70 | 4.23 |
| TTS | -10.05 | -2.44 | 19.09 | 0.04 | 0.18 | 0.06 | -2.69 | 10.04 |
| CTS PR | -1.58 | -0.22 | 2.77 | 0.23 | 0.00 | -0.02 | -1.71 | 4.47 |
| CTS MQ | -2.22 | -0.33 | 3.29 | -0.03 | 0.07 | -0.13 | -1.30 | 3.29 |
| $100 \cdot (\hat{\Gamma}_{t,a}^n - \Gamma_{t,a}^n) / \Gamma_{t,a}^n$ | | | | | | | | |
| TRTS | 8.77 | 2.97 | 10.51 | 0.05 | 0.08 | 0.04 | 0.85 | 2.39 |
| TTS | 2.56 | 0.00 | 5.93 | 0.09 | 0.11 | 0.00 | 3.01 | 13.19 |
| CTS PR | 9.84 | 8.54 | 10.39 | -0.07 | 0.08 | 0.10 | 0.75 | 2.58 |
| CTS MQ | 8.99 | 5.97 | 9.41 | -0.20 | 0.06 | -0.15 | 0.69 | 2.33 |

Note: In case of volatility estimators, skewness and kurtosis are computed for logarithmic values. T(R)TS based on highest frequency sampling. CTS based on 3 secs.

Table 6: Summary statistics of all estimators and statistics for C

| | Mean | Median | Std.Dev. | ACF(1) | ACF(5) | ACF(10) | Skew | Kurt |
|--|--------|--------|----------|--------|--------|---------|-------|-------|
| C_t^n | | | | | | | | |
| TRTS | 12.22 | 12.19 | 4.39 | 0.22 | 0.14 | 0.19 | -0.82 | 3.74 |
| TTS | 12.88 | 12.81 | 3.89 | 0.22 | 0.11 | 0.00 | -9.00 | 82.97 |
| CTS PR | 13.24 | 13.00 | 3.58 | 0.33 | 0.29 | 0.18 | -0.13 | 3.06 |
| CTS MQ | 13.11 | 12.94 | 3.64 | 0.36 | 0.27 | 0.19 | -0.12 | 2.82 |
| $C_{t,a}^n$ | | | | | | | | |
| TRTS | 13.59 | 13.26 | 3.66 | 0.33 | 0.27 | 0.16 | -0.24 | 2.98 |
| TTS | 13.40 | 13.20 | 3.62 | 0.35 | 0.25 | 0.15 | -0.30 | 3.09 |
| CTS PR | 13.66 | 13.28 | 3.59 | 0.34 | 0.23 | 0.15 | -0.28 | 3.14 |
| CTS MQ | 13.57 | 13.31 | 3.60 | 0.36 | 0.27 | 0.18 | -0.19 | 2.83 |
| $C_t^n(1)$ | | | | | | | | |
| TRTS | 12.76 | 12.33 | 3.91 | 0.32 | 0.22 | 0.20 | -0.28 | 2.97 |
| TTS | 14.04 | 13.94 | 3.57 | 0.38 | 0.29 | 0.25 | -0.11 | 2.59 |
| CTS PR | 13.26 | 13.16 | 3.60 | 0.33 | 0.28 | 0.17 | -0.15 | 2.99 |
| CTS MQ | 13.25 | 13.15 | 3.63 | 0.37 | 0.27 | 0.18 | -0.17 | 2.81 |
| $C_{t,a}^n(1)$ | | | | | | | | |
| TRTS | 14.02 | 13.31 | 3.83 | 0.33 | 0.24 | 0.13 | -0.31 | 2.85 |
| TTS | 14.50 | 14.51 | 3.94 | 0.37 | 0.29 | 0.30 | 0.05 | 2.80 |
| CTS PR | 13.69 | 13.28 | 3.64 | 0.35 | 0.22 | 0.14 | -0.27 | 3.03 |
| CTS MQ | 13.73 | 13.34 | 3.64 | 0.36 | 0.26 | 0.15 | -0.24 | 2.77 |
| $RV10$ | | | | | | | | |
| TRTS | 13.58 | 13.12 | 3.77 | 0.30 | 0.23 | 0.14 | -0.17 | 3.11 |
| TTS | 13.51 | 13.10 | 3.78 | 0.31 | 0.23 | 0.15 | -0.21 | 3.11 |
| CTS PR | 13.58 | 13.12 | 3.77 | 0.30 | 0.23 | 0.14 | -0.17 | 3.11 |
| CTS MQ | 13.51 | 13.10 | 3.78 | 0.31 | 0.23 | 0.15 | -0.21 | 3.11 |
| $MLRV$ | | | | | | | | |
| TRTS | 13.53 | 13.64 | 3.36 | 0.44 | 0.36 | 0.24 | -0.36 | 2.40 |
| TTS | 11.46 | 11.52 | 2.95 | 0.49 | 0.35 | 0.25 | -0.38 | 2.44 |
| CTS PR | 13.53 | 13.64 | 3.36 | 0.44 | 0.36 | 0.24 | -0.36 | 2.40 |
| CTS MQ | 11.46 | 11.52 | 2.95 | 0.49 | 0.35 | 0.25 | -0.38 | 2.44 |
| KRV | | | | | | | | |
| TRTS | 14.22 | 14.04 | 3.54 | 0.35 | 0.30 | 0.16 | -0.24 | 2.79 |
| TTS | 14.26 | 14.30 | 3.50 | 0.39 | 0.31 | 0.18 | -0.30 | 2.68 |
| CTS PR | 14.16 | 14.17 | 3.43 | 0.37 | 0.30 | 0.18 | -0.25 | 2.62 |
| CTS MQ | 14.01 | 14.04 | 3.42 | 0.38 | 0.31 | 0.21 | -0.31 | 2.61 |
| $n^{-1/4} \sqrt{\Gamma_{t,a}^n}$ | | | | | | | | |
| TRTS | 0.94 | 0.70 | 0.73 | -0.03 | 0.15 | 0.20 | 1.99 | 7.41 |
| TTS | 0.80 | 0.56 | 0.69 | 0.03 | 0.19 | 0.18 | 2.30 | 8.65 |
| CTS PR | 0.92 | 0.67 | 0.73 | 0.02 | 0.26 | 0.22 | 1.99 | 7.70 |
| CTS MQ | 0.84 | 0.62 | 0.69 | 0.03 | 0.14 | 0.15 | 2.29 | 8.95 |
| $n^{-1/4} \sqrt{\Gamma_{t,a}^n(1)}$ | | | | | | | | |
| TRTS | 0.95 | 0.71 | 0.73 | -0.02 | 0.15 | 0.20 | 1.98 | 7.37 |
| TTS | 0.81 | 0.58 | 0.69 | 0.03 | 0.19 | 0.18 | 2.31 | 8.71 |
| CTS PR | 0.92 | 0.67 | 0.73 | 0.01 | 0.26 | 0.22 | 1.99 | 7.71 |
| CTS MQ | 0.84 | 0.63 | 0.69 | 0.03 | 0.14 | 0.15 | 2.30 | 8.98 |
| $n^{-1/4} \sqrt{\hat{\Gamma}_t^n}$ | | | | | | | | |
| TRTS | 1.10 | 0.79 | 0.85 | -0.04 | 0.17 | 0.25 | 1.77 | 5.96 |
| TTS | 0.93 | 0.69 | 0.80 | 0.02 | 0.20 | 0.17 | 2.33 | 8.62 |
| CTS PR | 1.08 | 0.73 | 0.93 | -0.01 | 0.25 | 0.26 | 1.94 | 7.01 |
| CTS MQ | 0.98 | 0.68 | 0.91 | -0.01 | 0.14 | 0.17 | 2.33 | 8.76 |
| θ^* | | | | | | | | |
| TRTS | 0.61 | 0.29 | 0.66 | -0.12 | 0.13 | -0.08 | 1.16 | 3.27 |
| TTS | 0.45 | 0.20 | 0.62 | 0.03 | 0.21 | 0.09 | 2.43 | 8.59 |
| CTS PR | 0.88 | 0.50 | 0.87 | -0.01 | -0.03 | 0.16 | 0.81 | 2.36 |
| CTS MQ | 0.67 | 0.34 | 0.67 | -0.04 | 0.10 | -0.16 | 0.67 | 1.78 |
| k | | | | | | | | |
| TRTS | 37.14 | 16.00 | 40.77 | -0.10 | 0.11 | -0.06 | 1.22 | 3.49 |
| TTS | 31.95 | 14.00 | 46.64 | 0.05 | 0.24 | 0.06 | 2.61 | 9.63 |
| CTS PR | 77.66 | 44.00 | 77.25 | -0.01 | -0.03 | 0.16 | 0.81 | 2.36 |
| CTS MQ | 58.86 | 30.00 | 59.34 | -0.04 | 0.10 | -0.16 | 0.67 | 1.78 |
| $BTV_{t,a}^n / C_{t,a}^n$ | | | | | | | | |
| TRTS | 0.08 | 0.05 | 0.07 | 0.08 | -0.02 | -0.03 | 1.29 | 5.13 |
| TTS | 0.09 | 0.08 | 0.10 | 0.02 | 0.06 | -0.02 | 3.83 | 24.72 |
| CTS PR | 0.13 | 0.09 | 0.14 | 0.20 | -0.16 | 0.06 | 1.31 | 4.01 |
| CTS MQ | 0.16 | 0.11 | 0.15 | 0.03 | 0.02 | -0.17 | 0.83 | 2.61 |
| S_n | | | | | | | | |
| TRTS | -2.46 | -2.37 | 1.82 | 0.36 | -0.08 | 0.02 | 0.01 | 2.58 |
| TTS | -12.89 | -13.23 | 2.93 | 0.18 | 0.01 | 0.00 | 0.64 | 4.41 |
| CTS PR | -0.46 | -0.40 | 1.81 | 0.31 | -0.04 | 0.13 | -0.13 | 2.28 |
| CTS MQ | -2.08 | -2.03 | 1.78 | 0.30 | 0.21 | 0.03 | -0.02 | 3.71 |
| $100 \cdot (C_{t,a}^n - C_{t,a}^n(1)) / C_{t,a}^n$ | | | | | | | | |
| TRTS | -3.20 | -0.16 | 6.47 | -0.03 | -0.16 | 0.07 | -2.10 | 6.19 |
| TTS | -9.34 | -4.16 | 16.44 | 0.02 | -0.07 | -0.02 | -4.42 | 27.97 |
| CTS PR | -0.11 | 0.00 | 1.53 | 0.06 | 0.08 | 0.24 | -0.60 | 10.46 |
| CTS MQ | -1.20 | -0.02 | 2.54 | 0.21 | 0.03 | -0.08 | -1.98 | 5.87 |
| $100 \cdot (\hat{\Gamma}_{t,a}^n - \Gamma_{t,a}^n) / \Gamma_{t,a}^n$ | | | | | | | | |
| TRTS | 13.43 | 14.78 | 10.74 | -0.06 | 0.05 | -0.05 | 0.14 | 1.88 |
| TTS | 14.46 | 14.58 | 10.72 | 0.13 | -0.01 | -0.03 | 0.05 | 1.80 |
| CTS PR | 10.70 | 9.10 | 10.52 | 0.06 | -0.06 | -0.06 | 0.50 | 1.95 |
| CTS MQ | 9.32 | 5.26 | 10.18 | -0.06 | 0.14 | -0.03 | 0.61 | 1.91 |

Note: In case of volatility estimators, skewness and kurtosis are computed for logarithmic values. T(R)TS based on highest frequency sampling. CTS based on 3 secs.

Table 7: Summary statistics of all estimators and statistics for HD

| | Mean | Median | Std.Dev. | ACF(1) | ACF(5) | ACF(10) | Skew | Kurt |
|--|--------|--------|----------|--------|--------|---------|-------|-------|
| C_t^n | | | | | | | | |
| TRTS | 16.47 | 16.17 | 5.32 | 0.16 | 0.06 | -0.01 | -0.91 | 4.11 |
| TTS | 17.28 | 17.09 | 5.52 | 0.38 | 0.08 | -0.06 | -6.25 | 40.55 |
| CTS PR | 18.16 | 18.04 | 4.78 | 0.46 | 0.16 | -0.14 | -0.25 | 2.93 |
| CTS MQ | 18.29 | 18.06 | 4.84 | 0.48 | 0.15 | -0.20 | -0.09 | 2.48 |
| $C_{t,a}^n$ | | | | | | | | |
| TRTS | 18.46 | 18.00 | 5.03 | 0.47 | 0.12 | -0.18 | -0.13 | 2.48 |
| TTS | 18.17 | 17.77 | 4.98 | 0.48 | 0.12 | -0.15 | -0.25 | 2.85 |
| CTS PR | 18.62 | 18.50 | 5.04 | 0.48 | 0.12 | -0.17 | -0.24 | 2.71 |
| CTS MQ | 18.67 | 18.38 | 4.94 | 0.49 | 0.14 | -0.21 | -0.13 | 2.44 |
| $C_t^n(1)$ | | | | | | | | |
| TRTS | 17.27 | 16.53 | 4.79 | 0.35 | 0.13 | -0.10 | -0.33 | 2.83 |
| TTS | 19.13 | 18.59 | 4.76 | 0.41 | 0.09 | -0.20 | 0.01 | 2.61 |
| CTS PR | 18.13 | 18.04 | 4.77 | 0.45 | 0.17 | -0.13 | -0.24 | 2.92 |
| CTS MQ | 18.32 | 18.01 | 4.86 | 0.48 | 0.15 | -0.21 | -0.09 | 2.45 |
| $C_{t,a}^n(1)$ | | | | | | | | |
| TRTS | 19.09 | 18.39 | 5.70 | 0.47 | 0.08 | -0.21 | 0.00 | 2.60 |
| TTS | 19.96 | 19.03 | 5.34 | 0.33 | 0.08 | -0.19 | 0.14 | 2.75 |
| CTS PR | 18.59 | 18.50 | 5.03 | 0.48 | 0.13 | -0.17 | -0.24 | 2.70 |
| CTS MQ | 18.71 | 18.38 | 4.99 | 0.49 | 0.14 | -0.22 | -0.12 | 2.42 |
| $RV10$ | | | | | | | | |
| TRTS | 18.48 | 18.23 | 5.15 | 0.45 | 0.11 | -0.14 | -0.20 | 2.72 |
| TTS | 18.39 | 18.12 | 5.19 | 0.45 | 0.11 | -0.14 | -0.22 | 2.76 |
| CTS PR | 18.48 | 18.23 | 5.15 | 0.45 | 0.11 | -0.14 | -0.20 | 2.72 |
| CTS MQ | 18.39 | 18.12 | 5.19 | 0.45 | 0.11 | -0.14 | -0.22 | 2.76 |
| $MLRV$ | | | | | | | | |
| TRTS | 18.75 | 18.29 | 4.35 | 0.57 | 0.22 | -0.21 | 0.04 | 2.49 |
| TTS | 16.72 | 16.44 | 4.17 | 0.55 | 0.22 | -0.24 | 0.01 | 2.53 |
| CTS PR | 18.75 | 18.29 | 4.35 | 0.57 | 0.22 | -0.21 | 0.04 | 2.49 |
| CTS MQ | 16.72 | 16.44 | 4.17 | 0.55 | 0.22 | -0.24 | 0.01 | 2.53 |
| KRV | | | | | | | | |
| TRTS | 19.66 | 19.24 | 4.98 | 0.46 | 0.12 | -0.23 | -0.02 | 2.33 |
| TTS | 19.75 | 19.35 | 5.02 | 0.46 | 0.12 | -0.27 | 0.05 | 2.44 |
| CTS PR | 19.55 | 18.95 | 4.66 | 0.46 | 0.10 | -0.23 | -0.07 | 2.52 |
| CTS MQ | 19.36 | 19.16 | 4.81 | 0.45 | 0.11 | -0.25 | -0.09 | 2.49 |
| $n^{-1/4} \sqrt{\Gamma_{t,a}^n}$ | | | | | | | | |
| TRTS | 1.82 | 1.57 | 1.28 | 0.16 | 0.05 | -0.07 | 3.12 | 17.23 |
| TTS | 1.63 | 1.32 | 1.23 | 0.11 | 0.10 | -0.07 | 3.13 | 17.70 |
| CTS PR | 1.74 | 1.52 | 1.14 | 0.01 | 0.16 | -0.08 | 3.09 | 18.07 |
| CTS MQ | 1.74 | 1.40 | 1.27 | 0.10 | 0.05 | -0.05 | 3.21 | 18.32 |
| $n^{-1/4} \sqrt{\Gamma_{t,a}^n(1)}$ | | | | | | | | |
| TRTS | 1.84 | 1.57 | 1.28 | 0.16 | 0.05 | -0.07 | 3.09 | 17.01 |
| TTS | 1.66 | 1.35 | 1.23 | 0.11 | 0.10 | -0.07 | 3.13 | 17.64 |
| CTS PR | 1.74 | 1.52 | 1.14 | 0.01 | 0.16 | -0.08 | 3.08 | 18.06 |
| CTS MQ | 1.74 | 1.42 | 1.27 | 0.10 | 0.06 | -0.05 | 3.21 | 18.35 |
| $n^{-1/4} \sqrt{\hat{\Gamma}_t^n}$ | | | | | | | | |
| TRTS | 2.08 | 1.77 | 1.37 | 0.19 | 0.11 | -0.03 | 2.52 | 12.30 |
| TTS | 1.86 | 1.54 | 1.31 | 0.14 | 0.13 | -0.06 | 2.48 | 12.78 |
| CTS PR | 1.98 | 1.69 | 1.28 | -0.02 | 0.20 | -0.07 | 2.30 | 11.29 |
| CTS MQ | 1.98 | 1.58 | 1.48 | 0.16 | 0.06 | -0.08 | 2.49 | 11.32 |
| θ^* | | | | | | | | |
| TRTS | 0.67 | 0.39 | 0.71 | 0.23 | 0.03 | 0.18 | 1.30 | 4.01 |
| TTS | 0.61 | 0.20 | 0.77 | 0.12 | -0.06 | 0.07 | 1.62 | 4.57 |
| CTS PR | 0.95 | 0.69 | 0.89 | 0.17 | 0.05 | 0.09 | 0.83 | 2.46 |
| CTS MQ | 0.77 | 0.59 | 0.63 | 0.15 | 0.01 | 0.01 | 0.47 | 1.73 |
| k | | | | | | | | |
| TRTS | 38.66 | 24.00 | 39.83 | 0.20 | 0.02 | 0.16 | 1.25 | 3.89 |
| TTS | 42.57 | 14.00 | 53.33 | 0.11 | -0.04 | 0.06 | 1.54 | 4.16 |
| CTS PR | 83.79 | 61.00 | 78.44 | 0.17 | 0.05 | 0.09 | 0.83 | 2.46 |
| CTS MQ | 68.38 | 52.00 | 55.84 | 0.15 | 0.01 | 0.01 | 0.47 | 1.73 |
| $BTV_{t,a}^n / C_{t,a}^n$ | | | | | | | | |
| TRTS | 0.07 | 0.06 | 0.07 | 0.01 | -0.13 | 0.09 | 0.86 | 3.03 |
| TTS | 0.12 | 0.10 | 0.13 | 0.03 | -0.11 | 0.32 | 3.70 | 20.01 |
| CTS PR | 0.11 | 0.08 | 0.10 | -0.06 | 0.07 | 0.05 | 1.06 | 3.54 |
| CTS MQ | 0.12 | 0.09 | 0.11 | 0.22 | 0.09 | 0.02 | 1.21 | 4.02 |
| S_n | | | | | | | | |
| TRTS | -1.95 | -1.63 | 2.84 | 0.06 | -0.02 | -0.10 | -5.84 | 47.07 |
| TTS | -9.93 | -9.60 | 2.75 | 0.16 | 0.05 | -0.09 | -0.31 | 2.98 |
| CTS PR | 0.78 | 0.81 | 1.40 | 0.50 | 0.21 | 0.03 | 0.17 | 2.28 |
| CTS MQ | -0.59 | -0.56 | 1.51 | 0.26 | 0.02 | -0.19 | -0.16 | 2.53 |
| $100 \cdot (C_{t,a}^n - C_{t,a}^n(1)) / C_{t,a}^n$ | | | | | | | | |
| TRTS | -3.01 | -0.07 | 6.85 | 0.12 | -0.13 | -0.06 | -2.76 | 9.87 |
| TTS | -12.13 | -3.17 | 24.36 | 0.12 | -0.02 | 0.28 | -3.79 | 20.15 |
| CTS PR | 0.14 | 0.00 | 1.00 | 0.04 | 0.03 | -0.03 | 2.38 | 23.01 |
| CTS MQ | -0.15 | 0.00 | 0.89 | 0.00 | 0.01 | -0.13 | -2.62 | 16.78 |
| $100 \cdot (\hat{\Gamma}_{t,a}^n - \Gamma_{t,a}^n) / \Gamma_{t,a}^n$ | | | | | | | | |
| TRTS | 12.38 | 11.26 | 10.42 | 0.17 | -0.01 | -0.03 | 0.42 | 1.97 |
| TTS | 12.17 | 10.12 | 10.20 | 0.14 | -0.08 | -0.09 | 0.40 | 1.89 |
| CTS PR | 10.54 | 10.15 | 10.01 | 0.02 | 0.16 | 0.08 | 0.63 | 2.50 |
| CTS MQ | 9.56 | 8.40 | 9.18 | 0.34 | -0.14 | 0.02 | 0.56 | 2.12 |

Note: In case of volatility estimators, skewness and kurtosis are computed for logarithmic values. T(R)TS based on highest frequency sampling. CTS based on 3 secs.

Table 8: Summary statistics of all estimators and statistics for TEK

| | Mean | Median | Std.Dev. | ACF(1) | ACF(5) | ACF(10) | Skew | Kurt |
|--|--------|--------|----------|--------|--------|---------|-------|-------|
| C_t^n | | | | | | | | |
| TRTS | 22.72 | 21.55 | 8.81 | 0.23 | -0.03 | -0.05 | 0.71 | 8.63 |
| TTS | 22.92 | 22.21 | 9.15 | 0.16 | 0.04 | -0.05 | -8.94 | 81.97 |
| CTS PR | 24.19 | 23.53 | 8.80 | 0.23 | 0.02 | -0.05 | 0.67 | 8.37 |
| CTS MQ | 23.91 | 22.89 | 8.72 | 0.22 | 0.02 | -0.04 | 0.96 | 8.50 |
| $C_{t,a}^n$ | | | | | | | | |
| TRTS | 24.31 | 23.65 | 9.01 | 0.25 | 0.02 | -0.05 | 0.50 | 8.08 |
| TTS | 23.89 | 23.07 | 8.88 | 0.21 | 0.02 | -0.05 | 0.80 | 8.39 |
| CTS PR | 24.63 | 24.03 | 8.91 | 0.23 | 0.02 | -0.06 | 0.63 | 8.22 |
| CTS MQ | 24.38 | 23.61 | 8.80 | 0.23 | 0.03 | -0.05 | 0.89 | 8.43 |
| $C_t^n(1)$ | | | | | | | | |
| TRTS | 23.33 | 22.69 | 8.83 | 0.24 | -0.01 | -0.06 | 0.61 | 8.39 |
| TTS | 24.34 | 23.81 | 9.15 | 0.21 | 0.02 | -0.05 | 0.58 | 7.29 |
| CTS PR | 24.23 | 23.59 | 8.81 | 0.23 | 0.02 | -0.05 | 0.65 | 8.31 |
| CTS MQ | 23.92 | 22.86 | 8.73 | 0.22 | 0.02 | -0.04 | 0.96 | 8.50 |
| $C_{t,a}^n(1)$ | | | | | | | | |
| TRTS | 24.91 | 23.92 | 9.34 | 0.24 | 0.04 | -0.05 | 0.45 | 6.97 |
| TTS | 25.28 | 24.44 | 10.04 | 0.20 | 0.03 | -0.05 | 0.84 | 7.31 |
| CTS PR | 24.68 | 24.03 | 8.93 | 0.23 | 0.02 | -0.06 | 0.62 | 8.12 |
| CTS MQ | 24.39 | 23.51 | 8.81 | 0.22 | 0.04 | -0.04 | 0.88 | 8.41 |
| $RV10$ | | | | | | | | |
| TRTS | 24.75 | 23.91 | 9.59 | 0.18 | 0.01 | -0.06 | 0.71 | 8.54 |
| TTS | 24.26 | 23.21 | 9.67 | 0.19 | 0.02 | -0.05 | 0.85 | 8.87 |
| CTS PR | 24.75 | 23.91 | 9.59 | 0.18 | 0.01 | -0.06 | 0.71 | 8.54 |
| CTS MQ | 24.26 | 23.21 | 9.67 | 0.19 | 0.02 | -0.05 | 0.85 | 8.87 |
| $MLRV$ | | | | | | | | |
| TRTS | 24.60 | 23.73 | 7.63 | 0.36 | -0.02 | -0.07 | 0.07 | 5.31 |
| TTS | 21.33 | 20.66 | 6.85 | 0.25 | 0.05 | -0.03 | 0.85 | 6.96 |
| CTS PR | 24.60 | 23.73 | 7.63 | 0.36 | -0.02 | -0.07 | 0.07 | 5.31 |
| CTS MQ | 21.33 | 20.66 | 6.85 | 0.25 | 0.05 | -0.03 | 0.85 | 6.96 |
| KRV | | | | | | | | |
| TRTS | 27.23 | 26.26 | 8.96 | 0.25 | 0.00 | -0.09 | 0.31 | 5.01 |
| TTS | 26.37 | 24.99 | 8.40 | 0.27 | 0.03 | -0.08 | 0.61 | 5.30 |
| CTS PR | 26.81 | 26.11 | 8.45 | 0.26 | 0.04 | -0.09 | 0.38 | 5.74 |
| CTS MQ | 25.91 | 24.86 | 8.77 | 0.25 | 0.08 | -0.05 | 0.88 | 6.12 |
| $n^{-1/4} \sqrt{\Gamma_{t,a}^n}$ | | | | | | | | |
| TRTS | 4.88 | 3.72 | 9.17 | 0.04 | -0.04 | -0.03 | 8.40 | 75.38 |
| TTS | 4.12 | 2.87 | 8.79 | 0.02 | -0.03 | -0.03 | 8.28 | 73.68 |
| CTS PR | 4.42 | 3.42 | 8.61 | 0.03 | -0.03 | -0.03 | 8.48 | 76.47 |
| CTS MQ | 3.96 | 2.71 | 8.11 | 0.05 | -0.03 | -0.04 | 8.35 | 74.70 |
| $n^{-1/4} \sqrt{\Gamma_{t,a}^n(1)}$ | | | | | | | | |
| TRTS | 4.94 | 3.73 | 9.17 | 0.04 | -0.03 | -0.03 | 8.40 | 75.35 |
| TTS | 4.14 | 2.84 | 8.77 | 0.02 | -0.03 | -0.03 | 8.32 | 74.22 |
| CTS PR | 4.43 | 3.43 | 8.61 | 0.03 | -0.03 | -0.03 | 8.49 | 76.48 |
| CTS MQ | 3.97 | 2.74 | 8.11 | 0.05 | -0.03 | -0.04 | 8.35 | 74.70 |
| $n^{-1/4} \sqrt{\hat{\Gamma}_t^n}$ | | | | | | | | |
| TRTS | 6.37 | 4.54 | 15.16 | 0.02 | -0.03 | -0.02 | 8.66 | 78.54 |
| TTS | 5.47 | 3.59 | 15.35 | 0.01 | -0.02 | -0.02 | 8.70 | 78.94 |
| CTS PR | 5.58 | 3.68 | 14.87 | 0.01 | -0.03 | -0.02 | 8.68 | 78.80 |
| CTS MQ | 4.77 | 2.84 | 13.86 | 0.03 | -0.03 | -0.03 | 8.70 | 79.01 |
| θ^* | | | | | | | | |
| TRTS | 0.63 | 0.41 | 0.54 | 0.05 | 0.02 | 0.15 | 1.30 | 4.21 |
| TTS | 0.62 | 0.39 | 0.68 | -0.05 | 0.02 | 0.20 | 2.01 | 6.48 |
| CTS PR | 1.16 | 0.69 | 1.06 | 0.10 | 0.11 | -0.02 | 0.62 | 1.91 |
| CTS MQ | 0.69 | 0.37 | 0.66 | -0.03 | 0.15 | -0.05 | 0.73 | 1.88 |
| k | | | | | | | | |
| TRTS | 19.35 | 12.00 | 17.46 | 0.07 | -0.02 | 0.13 | 1.49 | 4.95 |
| TTS | 28.51 | 17.00 | 31.50 | -0.07 | -0.01 | 0.19 | 2.13 | 7.21 |
| CTS PR | 102.27 | 61.00 | 93.44 | 0.10 | 0.11 | -0.02 | 0.62 | 1.91 |
| CTS MQ | 60.72 | 32.50 | 58.46 | -0.03 | 0.15 | -0.05 | 0.73 | 1.88 |
| $BTV_{t,a}^n/C_{t,a}^n$ | | | | | | | | |
| TRTS | 0.06 | 0.05 | 0.06 | -0.09 | 0.00 | -0.08 | 0.80 | 2.76 |
| TTS | 0.08 | 0.06 | 0.13 | 0.00 | 0.12 | -0.15 | 4.37 | 29.78 |
| CTS PR | 0.25 | 0.17 | 0.23 | 0.03 | -0.02 | 0.04 | 0.83 | 2.39 |
| CTS MQ | 0.27 | 0.26 | 0.18 | -0.15 | 0.05 | 0.09 | 0.26 | 1.89 |
| S_n | | | | | | | | |
| TRTS | -1.12 | -0.88 | 1.49 | 0.04 | -0.05 | -0.03 | -1.31 | 5.94 |
| TTS | -3.39 | -3.06 | 1.73 | -0.13 | -0.09 | 0.03 | -0.23 | 2.29 |
| CTS PR | -0.62 | -0.61 | 1.24 | -0.06 | -0.10 | -0.09 | -0.09 | 2.17 |
| CTS MQ | 0.00 | 0.01 | 2.09 | 0.05 | 0.30 | 0.06 | 3.51 | 23.19 |
| $100 \cdot (C_{t,a}^n - C_{t,a}^n(1))/C_{t,a}^n$ | | | | | | | | |
| TRTS | -2.23 | -0.22 | 4.73 | -0.10 | 0.03 | 0.08 | -2.43 | 9.00 |
| TTS | -6.66 | -1.16 | 28.70 | 0.02 | 0.10 | -0.04 | -8.50 | 76.55 |
| CTS PR | -0.16 | 0.00 | 0.54 | -0.10 | 0.04 | -0.09 | -4.58 | 26.97 |
| CTS MQ | -0.06 | 0.00 | 1.37 | -0.04 | -0.18 | 0.01 | 1.56 | 26.25 |
| $100 \cdot (\hat{\Gamma}_{t,a}^n - \Gamma_{t,a}^n)/\Gamma_{t,a}^n$ | | | | | | | | |
| TRTS | 17.29 | 19.53 | 11.36 | -0.20 | -0.09 | 0.13 | -0.19 | 1.88 |
| TTS | 17.16 | 19.31 | 11.94 | 0.00 | -0.03 | -0.10 | -0.02 | 1.98 |
| CTS PR | 9.15 | 0.00 | 12.28 | -0.03 | 0.02 | 0.00 | 1.03 | 2.65 |
| CTS MQ | 5.02 | 0.00 | 8.51 | -0.10 | 0.04 | -0.04 | 1.84 | 6.17 |

Note: In case of volatility estimators, skewness and kurtosis are computed for logarithmic values. T(R)TS based on highest frequency sampling. CTS based on 3 secs.

Table 9: Summary statistics of all estimators and statistics for SON

| | Mean | Median | Std.Dev. | ACF(1) | ACF(5) | ACF(10) | Skew | Kurt |
|--|--------|--------|----------|--------|--------|---------|-------|-------|
| C_t^n | | | | | | | | |
| TRTS | 18.34 | 17.37 | 6.30 | 0.40 | 0.03 | -0.11 | 0.66 | 4.21 |
| TTS | 17.98 | 17.40 | 6.46 | 0.39 | 0.08 | -0.10 | -8.94 | 81.96 |
| CTS PR | 19.50 | 18.38 | 6.01 | 0.44 | 0.02 | -0.13 | 0.43 | 3.25 |
| CTS MQ | 19.10 | 18.25 | 6.13 | 0.49 | 0.04 | -0.15 | 0.45 | 3.84 |
| $C_{t,a}^n$ | | | | | | | | |
| TRTS | 19.61 | 18.66 | 6.40 | 0.47 | 0.02 | -0.13 | 0.55 | 3.74 |
| TTS | 19.05 | 18.29 | 6.38 | 0.49 | 0.03 | -0.12 | 0.52 | 4.01 |
| CTS PR | 19.82 | 18.79 | 6.13 | 0.46 | 0.04 | -0.13 | 0.40 | 3.19 |
| CTS MQ | 19.46 | 18.44 | 6.22 | 0.49 | 0.04 | -0.14 | 0.44 | 3.69 |
| $C_t^n(1)$ | | | | | | | | |
| TRTS | 18.37 | 17.20 | 6.36 | 0.46 | 0.02 | -0.13 | 0.63 | 3.96 |
| TTS | 19.58 | 18.20 | 6.99 | 0.46 | 0.02 | -0.12 | 0.48 | 4.18 |
| CTS PR | 19.52 | 18.51 | 6.02 | 0.45 | 0.03 | -0.13 | 0.41 | 3.23 |
| CTS MQ | 19.08 | 18.25 | 6.11 | 0.50 | 0.05 | -0.14 | 0.43 | 3.88 |
| $C_{t,a}^n(1)$ | | | | | | | | |
| TRTS | 19.66 | 18.38 | 6.65 | 0.48 | 0.00 | -0.14 | 0.47 | 3.41 |
| TTS | 20.55 | 19.59 | 7.42 | 0.47 | -0.02 | -0.12 | 0.42 | 4.13 |
| CTS PR | 19.85 | 18.78 | 6.15 | 0.46 | 0.05 | -0.13 | 0.40 | 3.15 |
| CTS MQ | 19.44 | 18.43 | 6.21 | 0.50 | 0.05 | -0.14 | 0.43 | 3.69 |
| $RV10$ | | | | | | | | |
| TRTS | 19.79 | 18.90 | 6.27 | 0.44 | 0.03 | -0.12 | 0.49 | 3.49 |
| TTS | 19.17 | 18.56 | 6.26 | 0.48 | 0.04 | -0.13 | 0.42 | 3.41 |
| CTS PR | 19.79 | 18.90 | 6.27 | 0.44 | 0.03 | -0.12 | 0.49 | 3.49 |
| CTS MQ | 19.17 | 18.56 | 6.26 | 0.48 | 0.04 | -0.13 | 0.42 | 3.41 |
| $MLRV$ | | | | | | | | |
| TRTS | 20.67 | 19.90 | 6.12 | 0.30 | 0.02 | -0.11 | 0.59 | 4.81 |
| TTS | 18.71 | 18.21 | 5.47 | 0.32 | 0.02 | -0.22 | 0.48 | 4.76 |
| CTS PR | 20.67 | 19.90 | 6.12 | 0.30 | 0.02 | -0.11 | 0.59 | 4.81 |
| CTS MQ | 18.71 | 18.21 | 5.47 | 0.32 | 0.02 | -0.22 | 0.48 | 4.76 |
| KRV | | | | | | | | |
| TRTS | 20.88 | 20.47 | 6.74 | 0.46 | 0.01 | -0.07 | 0.30 | 3.39 |
| TTS | 20.37 | 20.14 | 6.18 | 0.43 | 0.01 | -0.16 | 0.48 | 4.10 |
| CTS PR | 21.71 | 20.93 | 6.03 | 0.38 | 0.01 | -0.12 | 0.82 | 4.99 |
| CTS MQ | 20.06 | 19.21 | 6.05 | 0.42 | 0.02 | -0.13 | 0.58 | 4.02 |
| $n^{-1/4} \sqrt{\Gamma_{t,a}^n}$ | | | | | | | | |
| TRTS | 3.08 | 2.53 | 2.19 | 0.34 | -0.05 | -0.06 | 3.12 | 16.27 |
| TTS | 2.38 | 1.97 | 1.70 | 0.42 | 0.00 | -0.11 | 3.44 | 17.75 |
| CTS PR | 2.90 | 2.13 | 2.95 | 0.34 | -0.07 | -0.07 | 5.34 | 37.94 |
| CTS MQ | 2.27 | 1.85 | 1.82 | 0.42 | -0.06 | -0.09 | 3.54 | 18.10 |
| $n^{-1/4} \sqrt{\Gamma_{t,a}^n(1)}$ | | | | | | | | |
| TRTS | 3.11 | 2.57 | 2.20 | 0.34 | -0.05 | -0.07 | 3.07 | 15.97 |
| TTS | 2.43 | 2.04 | 1.76 | 0.43 | 0.00 | -0.10 | 3.57 | 18.55 |
| CTS PR | 2.91 | 2.13 | 2.95 | 0.34 | -0.07 | -0.07 | 5.34 | 37.93 |
| CTS MQ | 2.28 | 1.85 | 1.82 | 0.42 | -0.06 | -0.09 | 3.53 | 18.07 |
| $n^{-1/4} \sqrt{\hat{\Gamma}_t^n}$ | | | | | | | | |
| TRTS | 3.78 | 3.16 | 2.63 | 0.30 | -0.04 | -0.09 | 3.47 | 18.82 |
| TTS | 2.92 | 2.42 | 2.00 | 0.38 | 0.00 | -0.07 | 3.44 | 19.19 |
| CTS PR | 3.27 | 2.26 | 4.28 | 0.24 | -0.08 | -0.04 | 6.92 | 57.09 |
| CTS MQ | 2.35 | 1.86 | 1.88 | 0.38 | -0.06 | -0.10 | 3.38 | 16.76 |
| θ^* | | | | | | | | |
| TRTS | 0.51 | 0.40 | 0.39 | -0.09 | 0.18 | 0.06 | 1.94 | 7.34 |
| TTS | 0.64 | 0.30 | 0.68 | 0.05 | -0.06 | -0.14 | 1.68 | 5.18 |
| CTS PR | 1.25 | 1.00 | 1.02 | 0.11 | -0.12 | -0.09 | 0.41 | 1.69 |
| CTS MQ | 0.69 | 0.34 | 0.67 | -0.06 | 0.01 | -0.16 | 0.80 | 1.88 |
| k | | | | | | | | |
| TRTS | 12.93 | 10.00 | 9.61 | -0.09 | 0.19 | 0.08 | 1.54 | 5.05 |
| TTS | 24.94 | 13.00 | 27.32 | 0.05 | -0.06 | -0.13 | 1.83 | 5.59 |
| CTS PR | 110.05 | 88.00 | 89.96 | 0.11 | -0.12 | -0.09 | 0.41 | 1.69 |
| CTS MQ | 60.56 | 30.00 | 59.61 | -0.06 | 0.01 | -0.16 | 0.80 | 1.88 |
| $BTV_{t,a}^n/C_{t,a}^n$ | | | | | | | | |
| TRTS | 0.08 | 0.08 | 0.08 | -0.01 | -0.06 | -0.23 | 0.83 | 3.26 |
| TTS | 0.11 | 0.09 | 0.10 | 0.19 | -0.12 | -0.19 | 1.15 | 4.46 |
| CTS PR | 0.27 | 0.18 | 0.24 | 0.14 | -0.05 | -0.03 | 0.88 | 2.52 |
| CTS MQ | 0.31 | 0.30 | 0.19 | 0.07 | 0.08 | -0.26 | 0.33 | 2.08 |
| S_n | | | | | | | | |
| TRTS | 0.23 | 0.13 | 1.43 | 0.14 | 0.00 | 0.02 | 0.87 | 4.73 |
| TTS | -2.91 | -3.16 | 1.56 | 0.14 | -0.02 | -0.07 | 1.80 | 10.90 |
| CTS PR | -0.23 | -0.40 | 1.12 | 0.12 | -0.05 | -0.12 | 0.13 | 1.93 |
| CTS MQ | 0.57 | 0.57 | 1.15 | 0.06 | -0.12 | -0.15 | -0.11 | 2.81 |
| $100 \cdot (C_{t,a}^n - C_{t,a}^n(1))/C_{t,a}^n$ | | | | | | | | |
| TRTS | -0.03 | 0.05 | 7.08 | 0.06 | -0.22 | -0.13 | -2.64 | 16.20 |
| TTS | -7.87 | -2.59 | 13.45 | 0.01 | -0.02 | -0.14 | -2.69 | 10.66 |
| CTS PR | -0.14 | 0.00 | 1.14 | 0.01 | -0.01 | -0.01 | -7.77 | 66.91 |
| CTS MQ | 0.09 | 0.01 | 1.16 | 0.05 | -0.05 | 0.00 | -0.39 | 16.98 |
| $100 \cdot (\hat{\Gamma}_{t,a}^n - \Gamma_{t,a}^n)/\Gamma_{t,a}^n$ | | | | | | | | |
| TRTS | 18.91 | 19.05 | 12.78 | -0.02 | 0.07 | 0.04 | 0.30 | 2.56 |
| TTS | 17.78 | 18.12 | 12.30 | 0.20 | -0.16 | -0.08 | -0.12 | 1.87 |
| CTS PR | 7.66 | 0.00 | 11.22 | 0.10 | -0.20 | 0.20 | 1.06 | 2.51 |
| CTS MQ | 2.97 | 0.00 | 6.55 | -0.07 | 0.02 | -0.08 | 2.22 | 6.83 |

Note: In case of volatility estimators, skewness and kurtosis are computed for logarithmic values. T(R)TS based on highest frequency sampling. CTS based on 3 secs.

Table 10: Summary statistics of all estimators and statistics for ZLC

| | Mean | Median | Std.Dev. | ACF(1) | ACF(5) | ACF(10) | Skew | Kurt |
|--|--------|--------|----------|--------|--------|---------|-------|-------|
| C_t^n | | | | | | | | |
| TRTS | 30.03 | 28.20 | 14.99 | 0.22 | 0.05 | 0.05 | 1.43 | 8.66 |
| TTS | 29.73 | 27.00 | 15.89 | 0.21 | 0.04 | 0.03 | -8.89 | 80.94 |
| CTS PR | 30.88 | 28.99 | 15.23 | 0.18 | 0.03 | 0.04 | 1.48 | 9.75 |
| CTS MQ | 32.22 | 28.86 | 17.45 | 0.17 | 0.02 | 0.04 | 1.88 | 11.09 |
| $C_{t,a}^n$ | | | | | | | | |
| TRTS | 31.03 | 29.18 | 15.26 | 0.20 | 0.04 | 0.05 | 1.46 | 9.16 |
| TTS | 31.09 | 28.70 | 15.79 | 0.20 | 0.02 | 0.08 | 1.51 | 9.23 |
| CTS PR | 31.42 | 29.26 | 16.01 | 0.17 | 0.03 | 0.03 | 1.58 | 9.93 |
| CTS MQ | 32.52 | 29.04 | 17.61 | 0.17 | 0.02 | 0.04 | 1.89 | 11.10 |
| $C_t^n(1)$ | | | | | | | | |
| TRTS | 29.92 | 28.14 | 15.04 | 0.22 | 0.04 | 0.05 | 1.36 | 8.43 |
| TTS | 31.18 | 28.70 | 15.74 | 0.18 | 0.01 | 0.10 | 1.28 | 8.04 |
| CTS PR | 30.81 | 28.99 | 15.00 | 0.18 | 0.03 | 0.04 | 1.44 | 9.75 |
| CTS MQ | 32.22 | 28.85 | 17.45 | 0.17 | 0.02 | 0.04 | 1.88 | 11.09 |
| $C_{t,a}^n(1)$ | | | | | | | | |
| TRTS | 30.92 | 29.18 | 15.32 | 0.20 | 0.03 | 0.05 | 1.41 | 8.95 |
| TTS | 32.46 | 29.55 | 16.66 | 0.14 | -0.01 | 0.11 | 1.24 | 7.08 |
| CTS PR | 31.34 | 29.26 | 15.70 | 0.18 | 0.03 | 0.03 | 1.53 | 9.85 |
| CTS MQ | 32.51 | 29.03 | 17.61 | 0.17 | 0.02 | 0.04 | 1.88 | 11.10 |
| $RV10$ | | | | | | | | |
| TRTS | 31.39 | 28.98 | 16.69 | 0.16 | 0.02 | 0.02 | 1.75 | 10.85 |
| TTS | 30.83 | 28.06 | 16.62 | 0.17 | 0.02 | 0.05 | 1.83 | 10.70 |
| CTS PR | 31.39 | 28.98 | 16.69 | 0.16 | 0.02 | 0.02 | 1.75 | 10.85 |
| CTS MQ | 30.83 | 28.06 | 16.62 | 0.17 | 0.02 | 0.05 | 1.83 | 10.70 |
| $MLRV$ | | | | | | | | |
| TRTS | 38.77 | 35.70 | 18.04 | 0.17 | 0.10 | -0.03 | 1.27 | 8.44 |
| TTS | 39.60 | 36.91 | 16.67 | 0.24 | 0.16 | -0.01 | 1.47 | 8.72 |
| CTS PR | 38.77 | 35.70 | 18.04 | 0.17 | 0.10 | -0.03 | 1.27 | 8.44 |
| CTS MQ | 39.60 | 36.91 | 16.67 | 0.24 | 0.16 | -0.01 | 1.47 | 8.72 |
| KRV | | | | | | | | |
| TRTS | 33.81 | 30.46 | 19.18 | 0.18 | 0.01 | 0.03 | 1.49 | 9.23 |
| TTS | 39.10 | 36.14 | 18.88 | 0.18 | 0.05 | 0.02 | 1.60 | 9.36 |
| CTS PR | 39.02 | 35.77 | 18.29 | 0.13 | 0.04 | -0.02 | 1.76 | 10.13 |
| CTS MQ | 37.54 | 33.75 | 18.85 | 0.17 | 0.03 | 0.02 | 1.74 | 9.86 |
| $n^{-1/4} \sqrt{\Gamma_{t,a}^n}$ | | | | | | | | |
| TRTS | 13.89 | 6.59 | 53.04 | 0.00 | -0.01 | -0.01 | 8.61 | 77.49 |
| TTS | 14.12 | 6.81 | 52.81 | 0.00 | -0.02 | -0.01 | 8.56 | 76.77 |
| CTS PR | 13.65 | 6.26 | 56.32 | 0.00 | -0.01 | 0.00 | 8.76 | 79.46 |
| CTS MQ | 15.09 | 6.18 | 69.00 | 0.00 | -0.02 | 0.00 | 8.77 | 79.50 |
| $n^{-1/4} \sqrt{\Gamma_{t,a}^n(1)}$ | | | | | | | | |
| TRTS | 13.92 | 6.60 | 53.04 | 0.00 | -0.01 | -0.01 | 8.61 | 77.46 |
| TTS | 14.12 | 6.81 | 52.81 | 0.00 | -0.02 | -0.01 | 8.56 | 76.78 |
| CTS PR | 13.70 | 6.26 | 56.35 | 0.00 | -0.01 | 0.00 | 8.75 | 79.27 |
| CTS MQ | 15.09 | 6.18 | 69.00 | 0.00 | -0.02 | 0.00 | 8.77 | 79.50 |
| $n^{-1/4} \sqrt{\hat{\Gamma}_t^n}$ | | | | | | | | |
| TRTS | 15.77 | 8.64 | 52.89 | 0.01 | -0.02 | 0.00 | 8.58 | 77.14 |
| TTS | 16.60 | 8.52 | 52.93 | 0.01 | -0.02 | -0.01 | 8.38 | 74.53 |
| CTS PR | 15.36 | 7.54 | 56.20 | 0.00 | -0.01 | 0.01 | 8.73 | 79.09 |
| CTS MQ | 16.27 | 7.13 | 68.90 | 0.00 | -0.02 | 0.00 | 8.76 | 79.35 |
| θ^* | | | | | | | | |
| TRTS | 0.86 | 0.78 | 0.51 | 0.07 | 0.07 | 0.01 | 1.72 | 8.17 |
| TTS | 1.87 | 1.98 | 0.91 | 0.06 | -0.20 | -0.02 | -0.53 | 2.31 |
| CTS PR | 2.06 | 2.20 | 0.76 | 0.33 | 0.00 | -0.01 | -0.81 | 2.94 |
| CTS MQ | 1.60 | 1.79 | 0.38 | 0.17 | -0.19 | 0.15 | -2.12 | 6.47 |
| k | | | | | | | | |
| TRTS | 26.65 | 23.00 | 19.27 | 0.22 | 0.10 | -0.01 | 2.79 | 16.31 |
| TTS | 95.94 | 95.00 | 51.38 | 0.25 | -0.08 | -0.06 | 0.01 | 2.82 |
| CTS PR | 181.96 | 194.00 | 67.28 | 0.33 | 0.00 | -0.01 | -0.81 | 2.94 |
| CTS MQ | 141.54 | 158.00 | 33.90 | 0.17 | -0.19 | 0.15 | -2.12 | 6.47 |
| $BTV_{t,a}^n/C_{t,a}^n$ | | | | | | | | |
| TRTS | 0.06 | 0.02 | 0.08 | -0.10 | -0.07 | -0.07 | 2.12 | 9.15 |
| TTS | 0.07 | 0.00 | 0.14 | -0.18 | -0.03 | 0.03 | 2.82 | 12.67 |
| CTS PR | 0.10 | 0.04 | 0.15 | 0.08 | 0.01 | -0.07 | 2.39 | 8.70 |
| CTS MQ | 0.08 | 0.04 | 0.11 | 0.01 | 0.02 | -0.01 | 2.56 | 12.62 |
| S_n | | | | | | | | |
| TRTS | 0.47 | 0.32 | 1.11 | 0.10 | -0.05 | 0.00 | 0.34 | 2.78 |
| TTS | -3.43 | -3.40 | 1.59 | 0.12 | 0.02 | 0.23 | -0.24 | 2.79 |
| CTS PR | 0.31 | 0.35 | 1.12 | 0.00 | 0.16 | -0.07 | -0.07 | 2.51 |
| CTS MQ | 0.40 | 0.42 | 0.96 | -0.11 | -0.05 | -0.03 | -0.05 | 2.75 |
| $100 \cdot (C_{t,a}^n - C_{t,a}^n(1))/C_{t,a}^n$ | | | | | | | | |
| TRTS | 0.45 | 0.10 | 2.15 | 0.08 | 0.02 | -0.07 | 2.66 | 16.09 |
| TTS | -4.53 | -0.09 | 16.76 | -0.07 | -0.07 | -0.05 | -4.59 | 25.62 |
| CTS PR | 0.09 | 0.00 | 0.75 | 0.05 | -0.02 | -0.02 | 8.83 | 80.29 |
| CTS MQ | 0.00 | 0.00 | 0.01 | 0.06 | -0.06 | -0.01 | 4.34 | 25.12 |
| $100 \cdot (\hat{\Gamma}_{t,a}^n - \Gamma_{t,a}^n)/\Gamma_{t,a}^n$ | | | | | | | | |
| TRTS | 20.19 | 22.02 | 11.31 | -0.03 | 0.00 | 0.02 | -0.44 | 2.08 |
| TTS | 20.81 | 22.27 | 12.76 | -0.10 | 0.03 | 0.00 | -0.34 | 2.05 |
| CTS PR | 17.74 | 19.35 | 11.32 | 0.01 | 0.03 | -0.11 | -0.25 | 1.91 |
| CTS MQ | 13.21 | 14.24 | 10.45 | 0.07 | 0.00 | -0.18 | 0.01 | 1.50 |

Note: In case of volatility estimators, skewness and kurtosis are computed for logarithmic values. T(R)TS based on highest frequency sampling. CTS based on 3 secs.

Figures

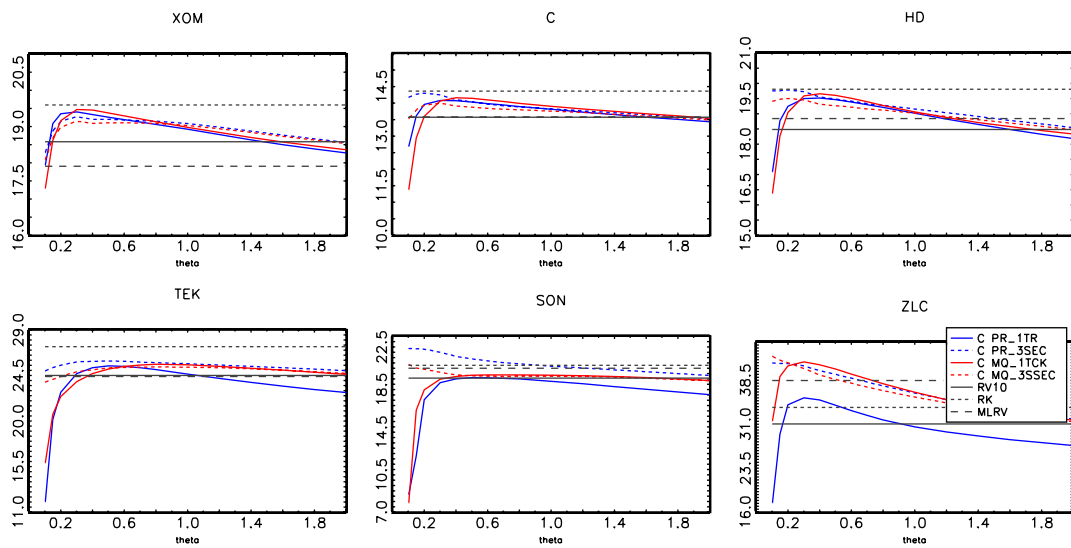


Figure 1: Averages of $100\sqrt{252C_t^n}$ in dependence of θ . Based on T(R)TS and 3 sec CTS using prices and mid-quotes. Benchmarks: RV10, MLRV and RK using prices.

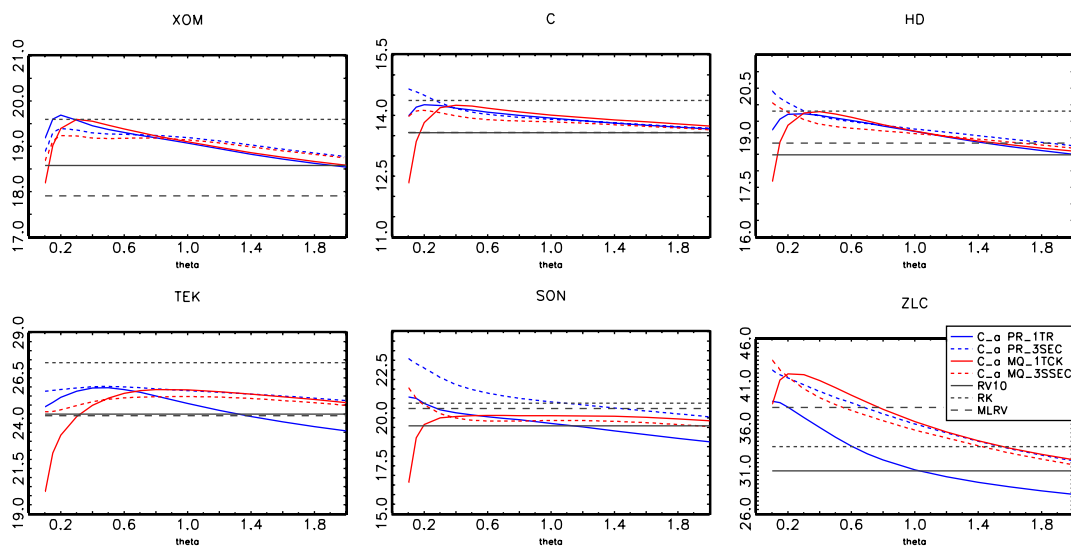


Figure 2: Averages of $100\sqrt{252C_{t,a}^n}$ in dependence of θ . Based on T(R)TS and 3 sec CTS using prices and mid-quotes. Benchmarks: RV10, MLRV and RK using prices.

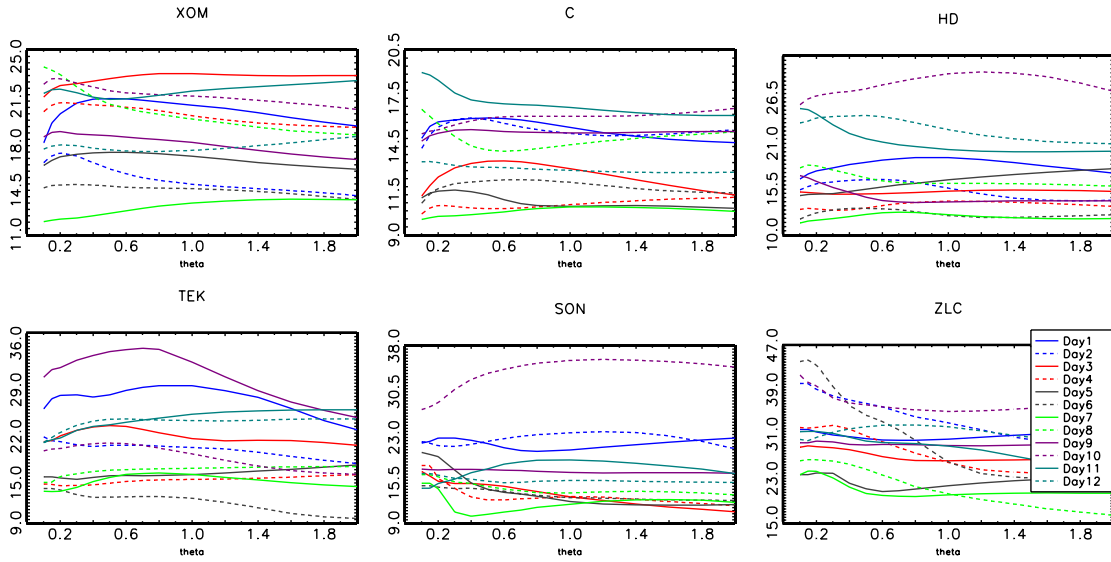


Figure 3: Realizations of $100\sqrt{252C_{t,a}^n}$ for different values of θ using highest frequency TRTS for the first 12 trading days in the sample.

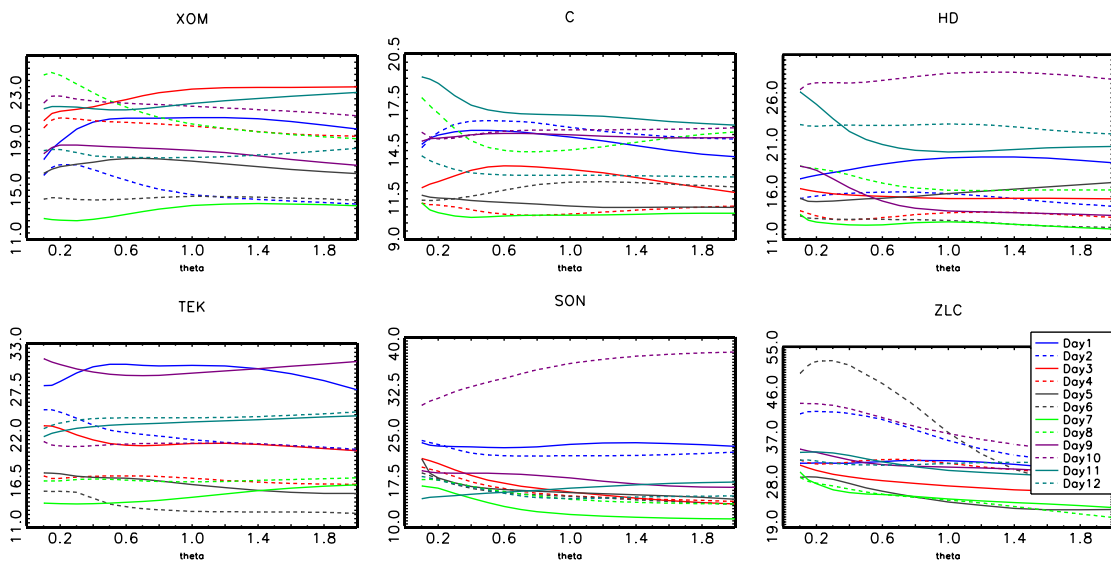


Figure 4: Realizations of $100\sqrt{252C_{t,a}^n}$ for different values of θ using 3 sec CTS based on prices for the first 12 trading days in the sample.

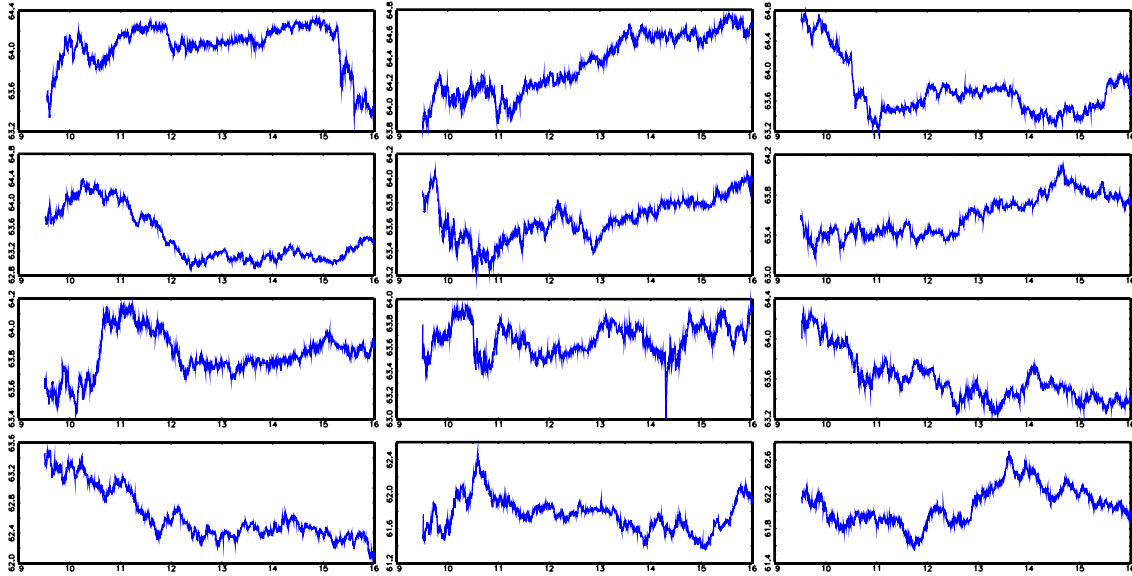


Figure 5: Time series of prices for XOM for the first 12 trading days in the sample.

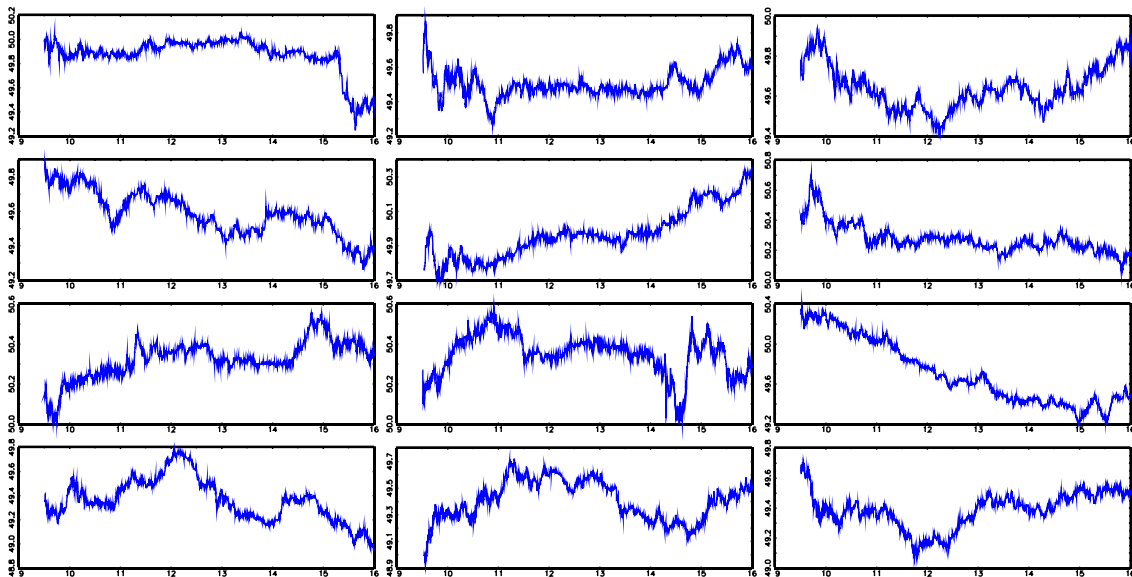


Figure 6: Time series of prices for C for the first 12 trading days in the sample.

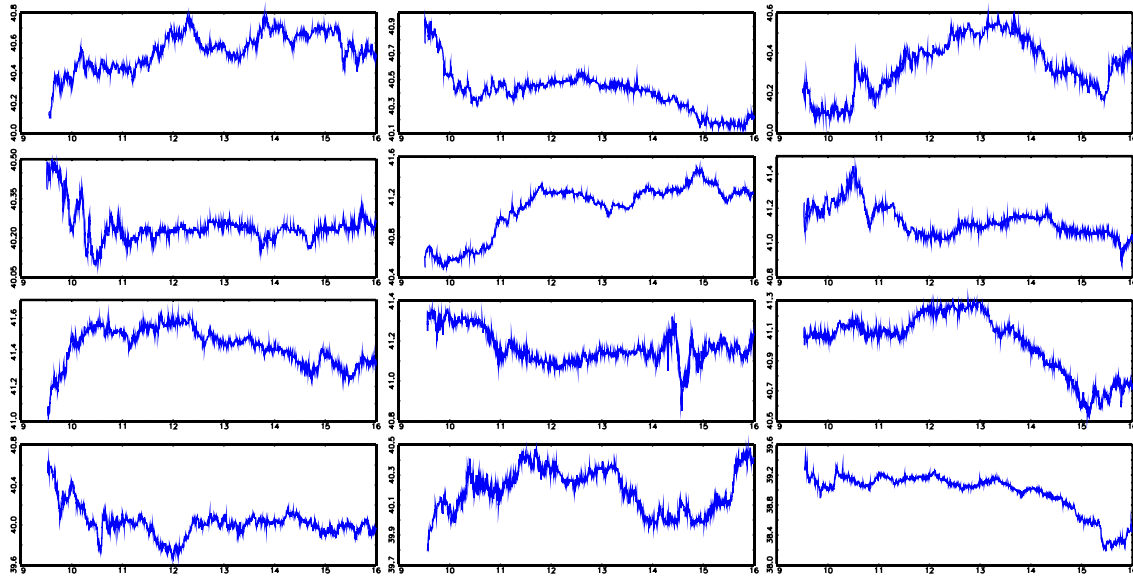


Figure 7: Time series of prices for HD for the first 12 trading days in the sample.

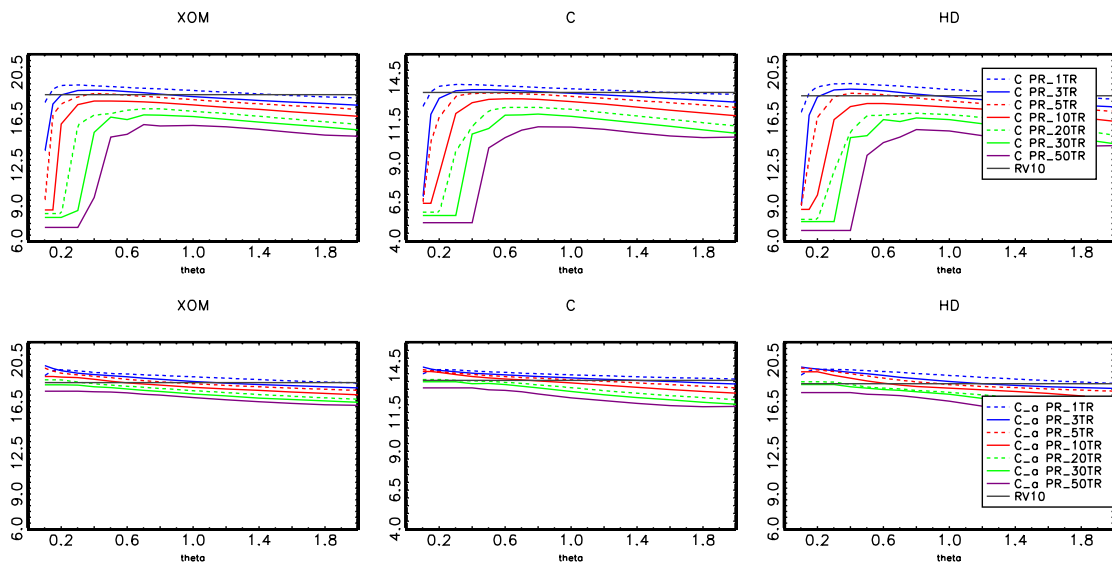


Figure 8: Averages of $100\sqrt{252}C_t^n$ (top panel) and $100\sqrt{252}C_{t,a}^n$ (bottom panel) for different values of θ and Δ_n using TRTS.

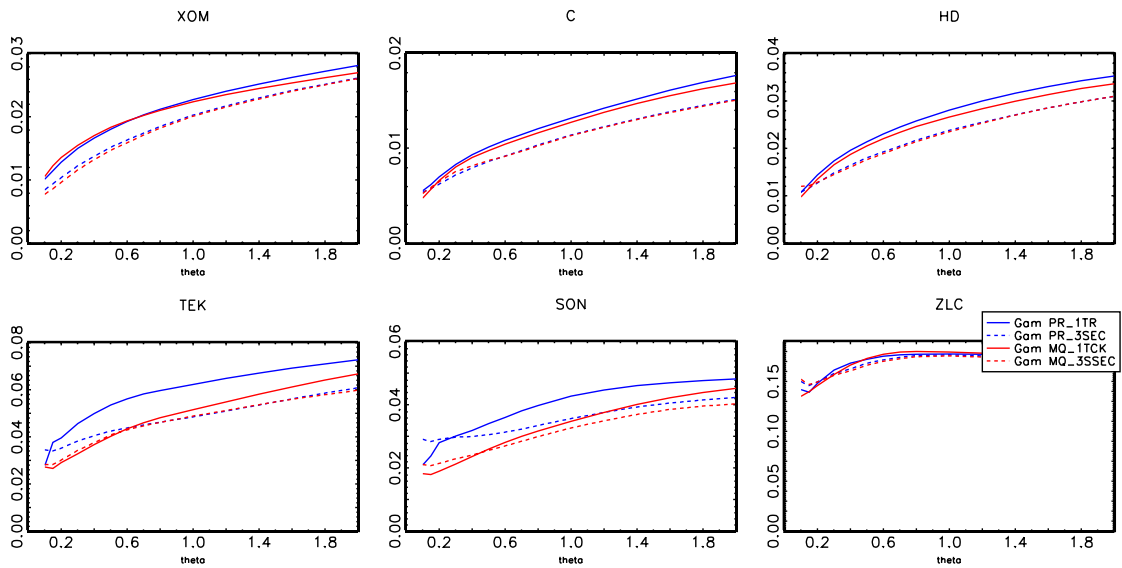


Figure 9: Averages of $n_t^{-1/4} \sqrt{\Gamma_t}$ (multiplied by 1000) for different choices of θ . Based on highest frequency T(R)TS and 3 sec CTS using prices and mid-quotes.

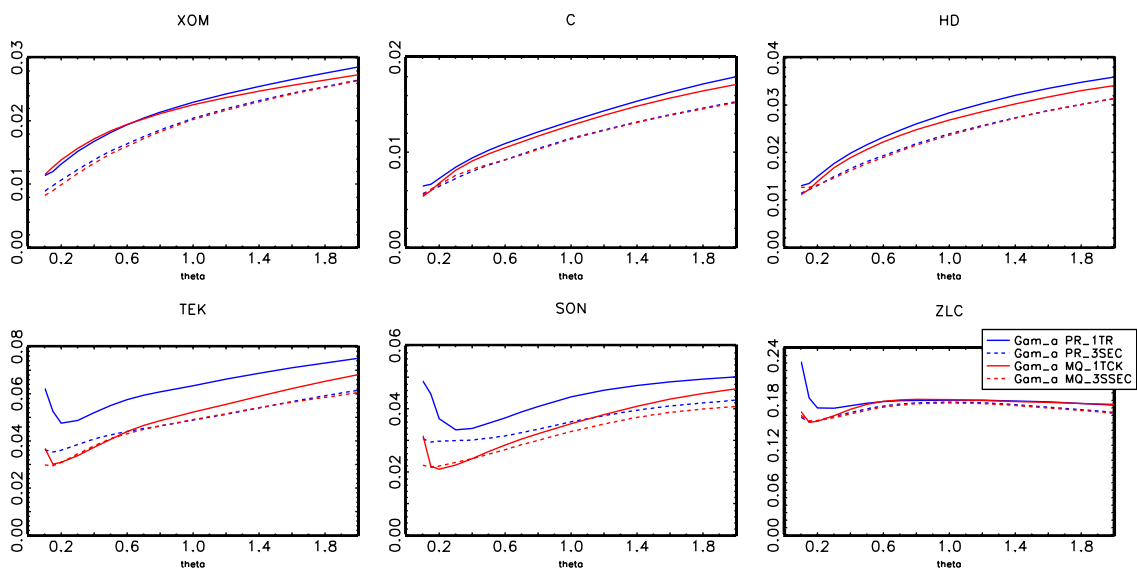


Figure 10: Averages of $n_t^{-1/4} \sqrt{\Gamma_{t,a}}$ (multiplied by 1000) for different choices of θ . Based on highest frequency T(R)TS and 3sec CTS using prices and mid-quotes.

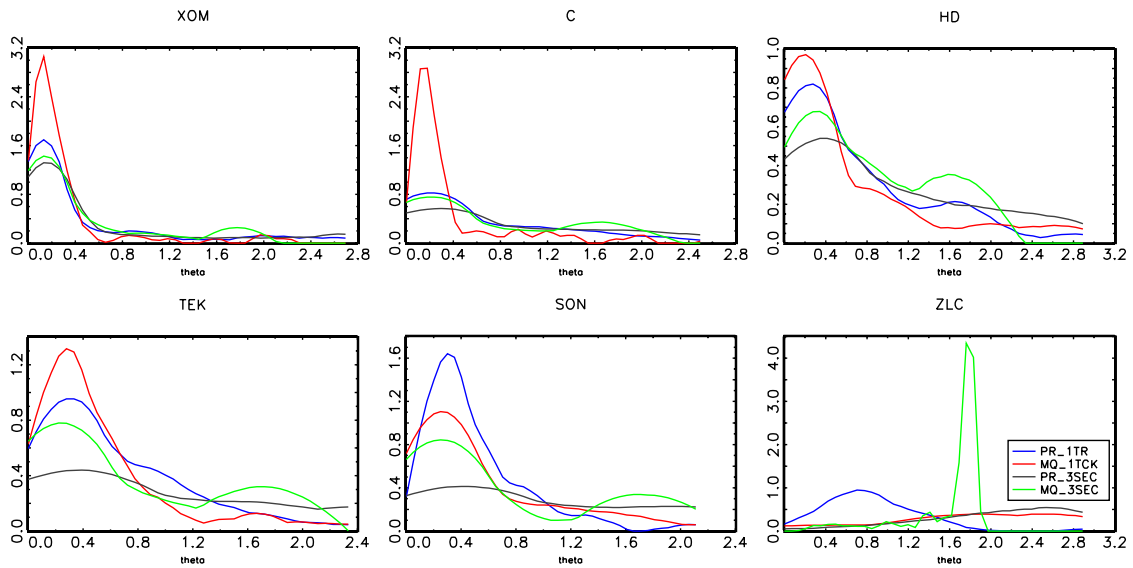


Figure 11: Histogram of daily values of θ^* based on MSE minimization. Based on highest frequency T(R)TS and 3 sec CTS using prices and mid-quotes.

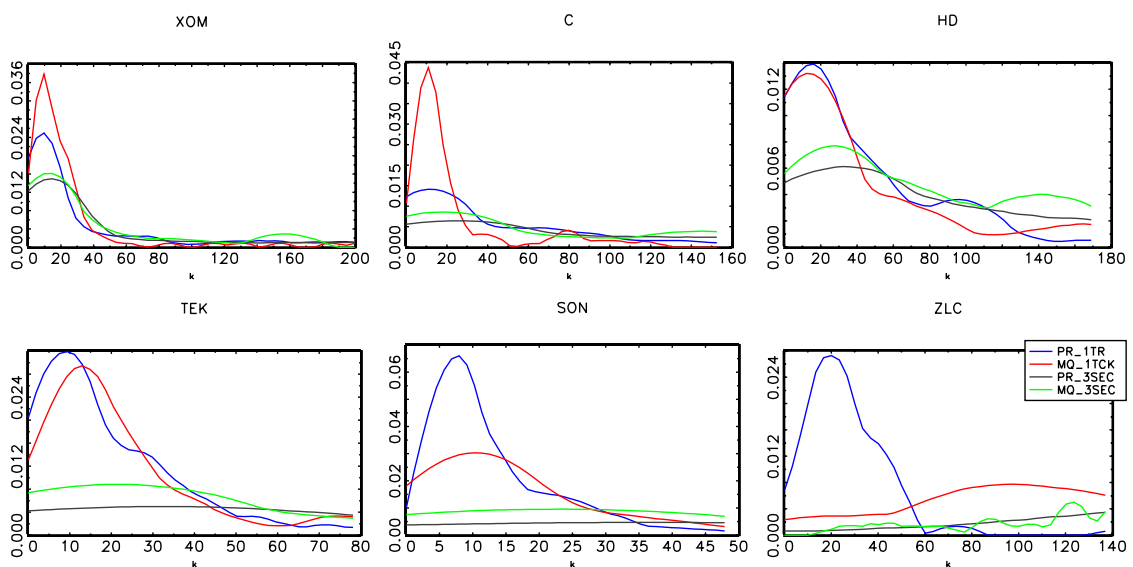


Figure 12: Histogram of daily values of k_n^* based on MSE minimization. Based on highest frequency T(R)TS and 3 sec CTS using prices and mid-quotes.

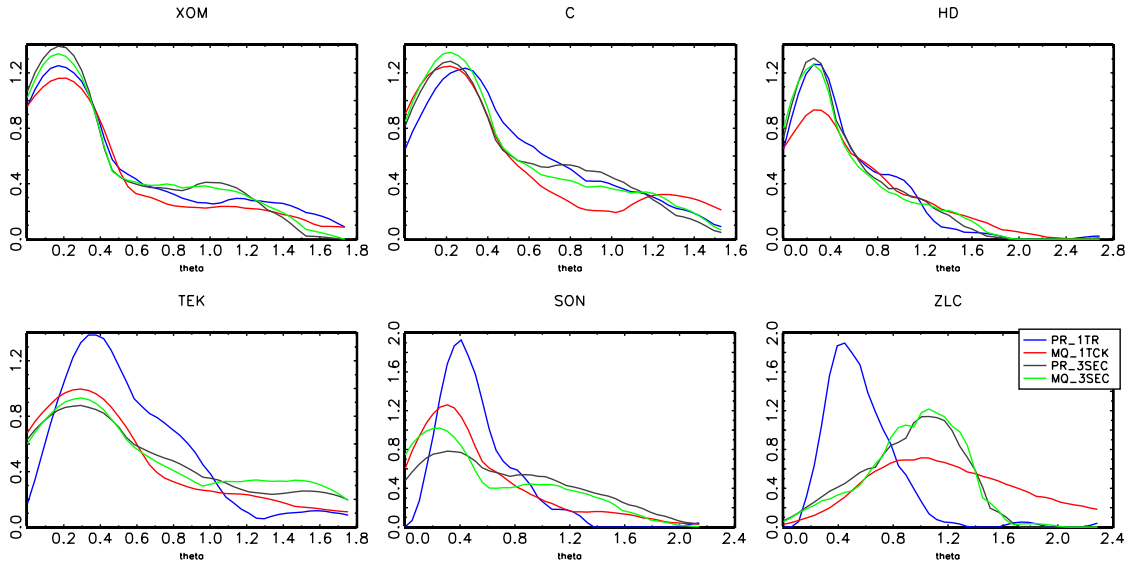


Figure 13: Histogram of daily optimal values of θ^* based on MSE minimization. Based on T(R)TS with $\Delta_n = 3$ and 15 sec CTS using prices and mid-quotes.

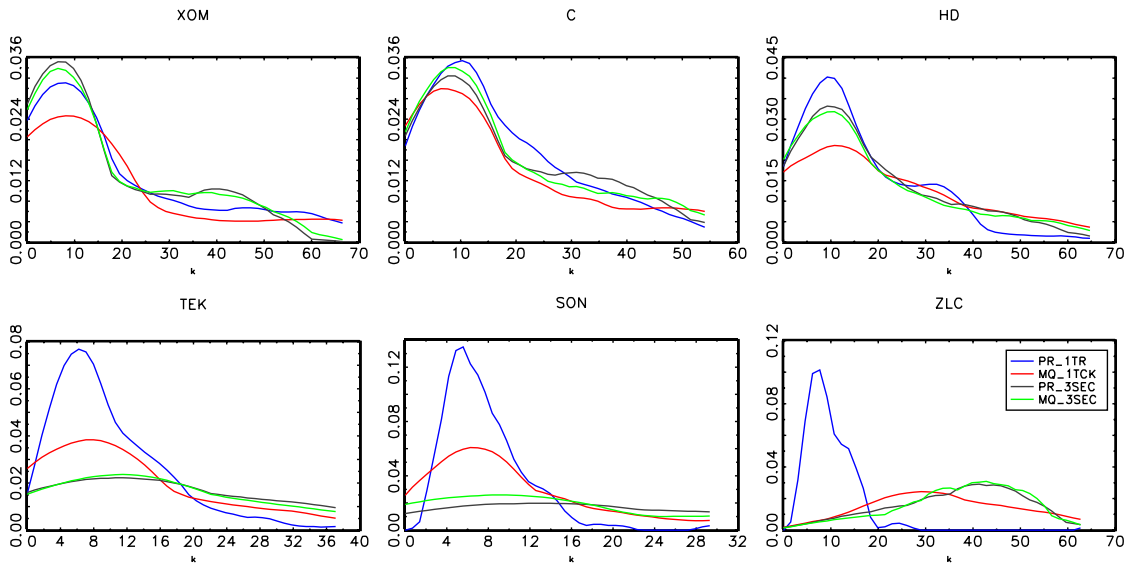


Figure 14: Histogram of daily optimal values of k_n^* based on MSE minimization. Based on T(R)TS with $\Delta_n = 3$ and 15 sec CTS using prices and mid-quotes.

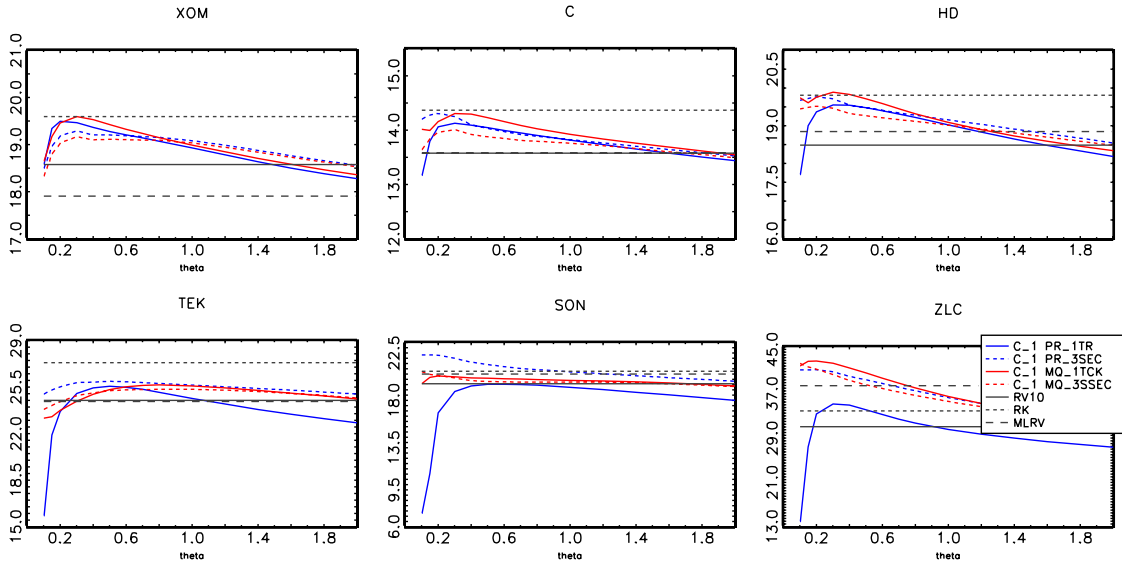


Figure 15: Averages of $100\sqrt{252C_t^n(1)}$ for different values of θ . Based on highest frequency T(R)TS and 3 sec CTS using prices and mid-quotes. Benchmarks: RV10, MLRV and RK implemented based on trade prices.

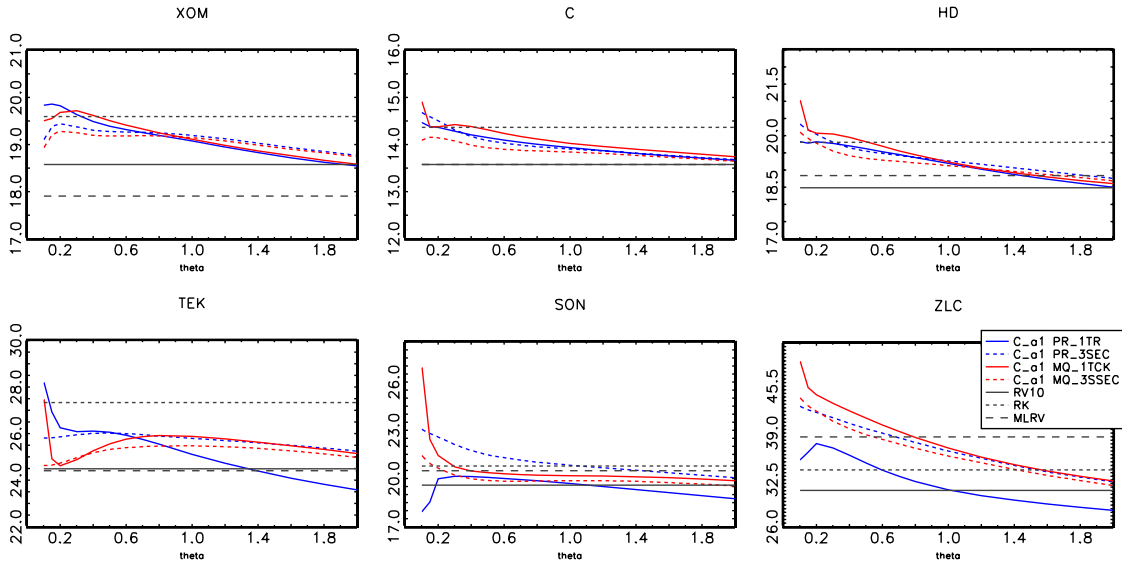


Figure 16: Averages of $100\sqrt{252C_{t,a}^n(1)}$ for different values of θ . Based on highest frequency T(R)TS and 3 sec CTS using prices and mid-quotes. Benchmarks: RV10, MLRV and RK implemented based on trade prices.

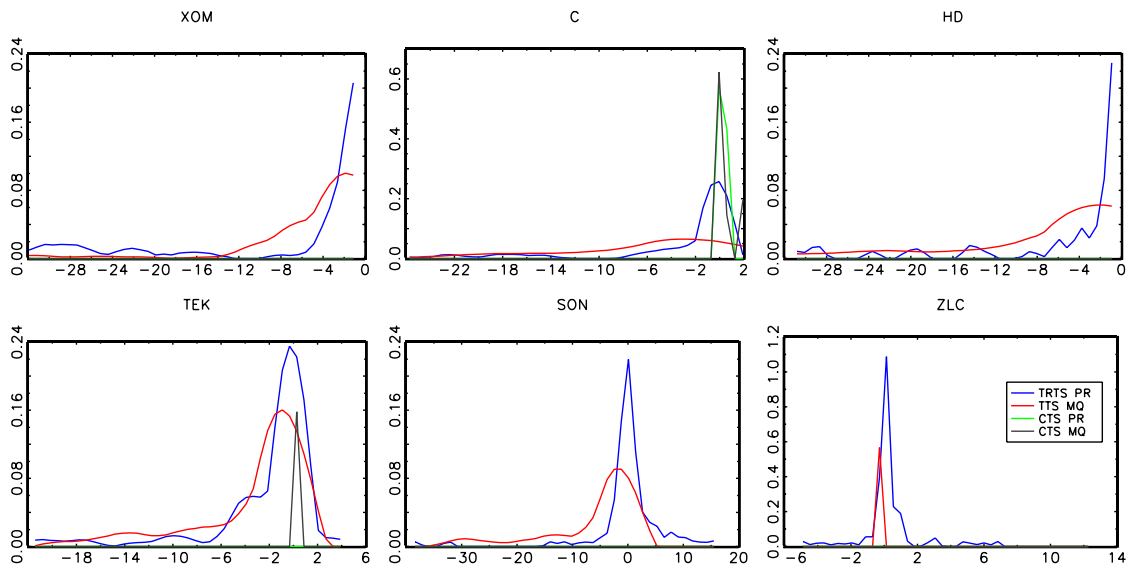


Figure 17: Histogram of $100 \cdot (C_{t,a}^n - C_{t,a}^n(1)) / C_{t,a}^n$. Based on highest frequency T(R)TS and 3 sec CTS.

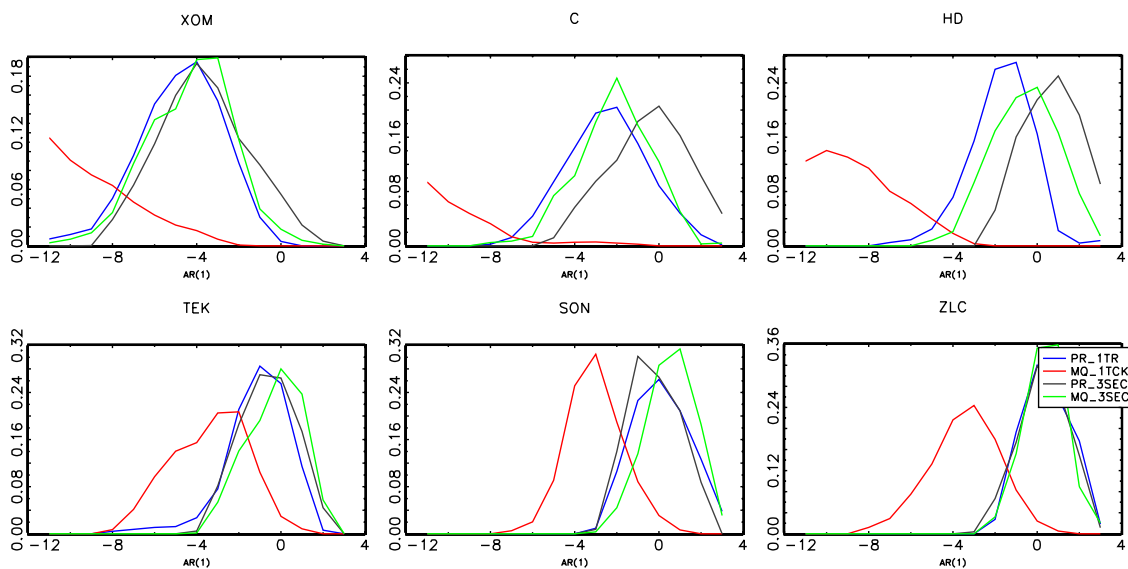


Figure 18: Histogram of AR(1) test statistic S_n . Based on highest frequency T(R)TS and 3 sec CTS.

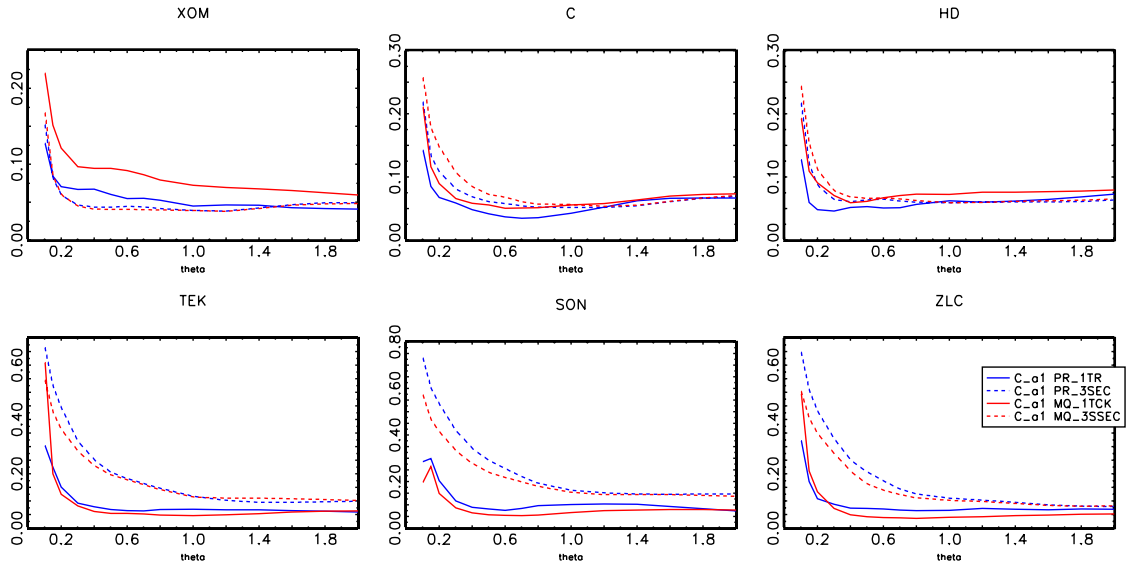


Figure 19: Averaged jump ratio $BTV_{t,a}^n/C_{t,a}^n$ for different values of θ . Based on highest frequency T(R)TS and 3 sec CTS using prices and mid-quotes.

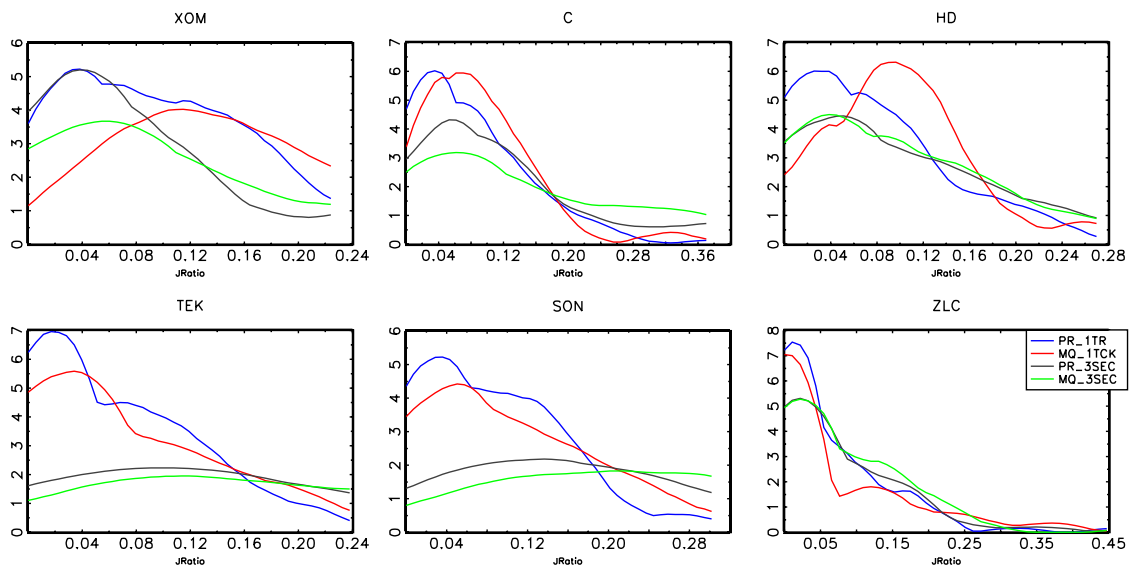


Figure 20: Histogram of $BTV_{t,a}^n/C_{t,a}^n$. Based on highest frequency T(R)TS and 3 sec CTS.

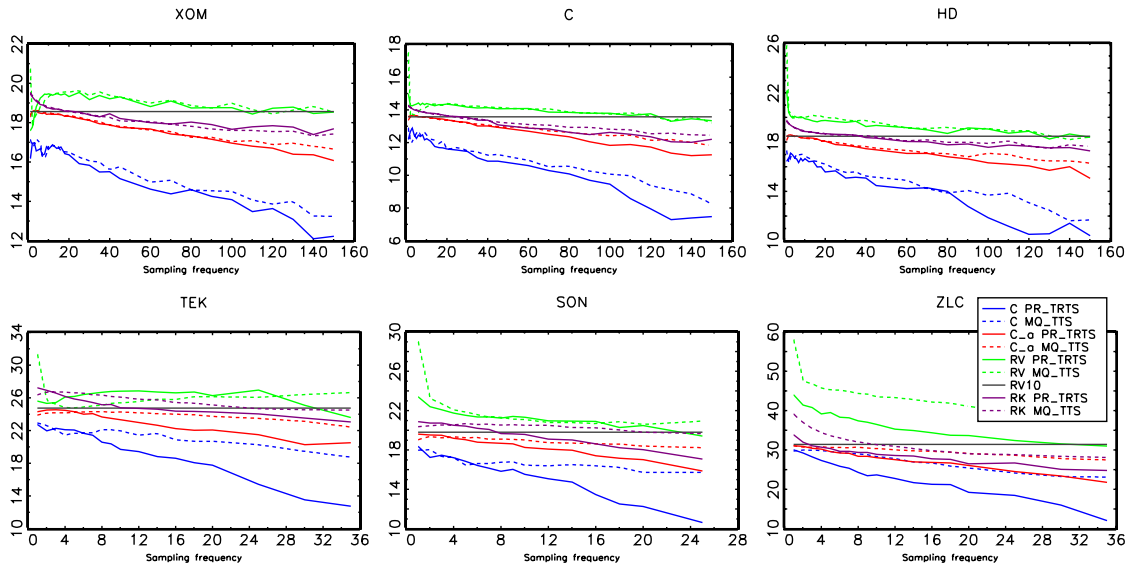


Figure 21: Averages of $100\sqrt{252Y_t}$ with $Y_t \in \{C_t^n, C_{t,a}^n, RV, RV10, RK\}$ for different values of Δ_n using T(R)TS. C_t^n and $C_{t,a}^n$ based on an optimal choice of θ .

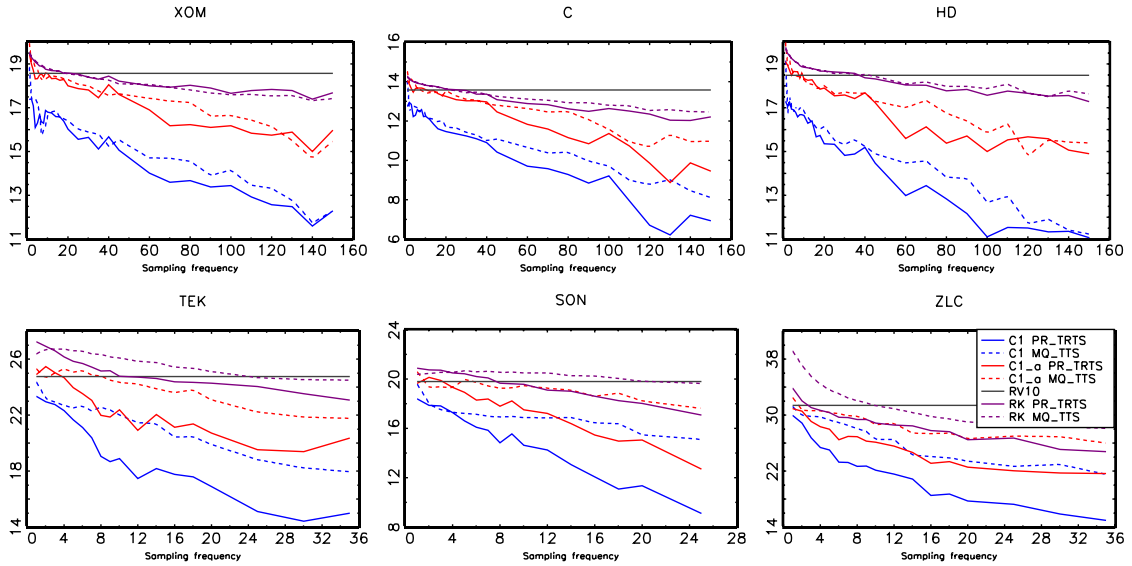


Figure 22: Averages of $100\sqrt{252Y_t}$ with $Y_t \in \{C_t^n(1), C_{t,a}^n(1), RV, RV10, RK\}$ for different values of Δ_n using T(R)TS. $C_t^n(1)$ and $C_{t,a}^n(1)$ based on an optimal choice of θ .

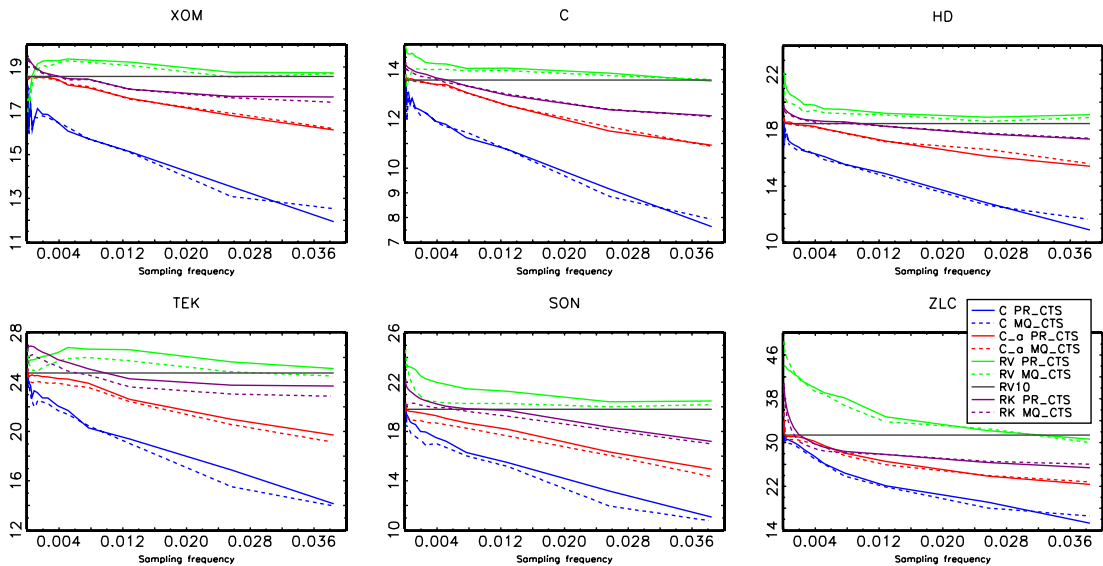


Figure 23: Averages of $100\sqrt{252Y_t}$ with $Y_t \in \{C_t^n, C_{t,a}^n, RV, RV10, RK\}$ for different values of Δ_n using CTS. C_t^n and $C_{t,a}^n$ based on an optimal choice of θ .

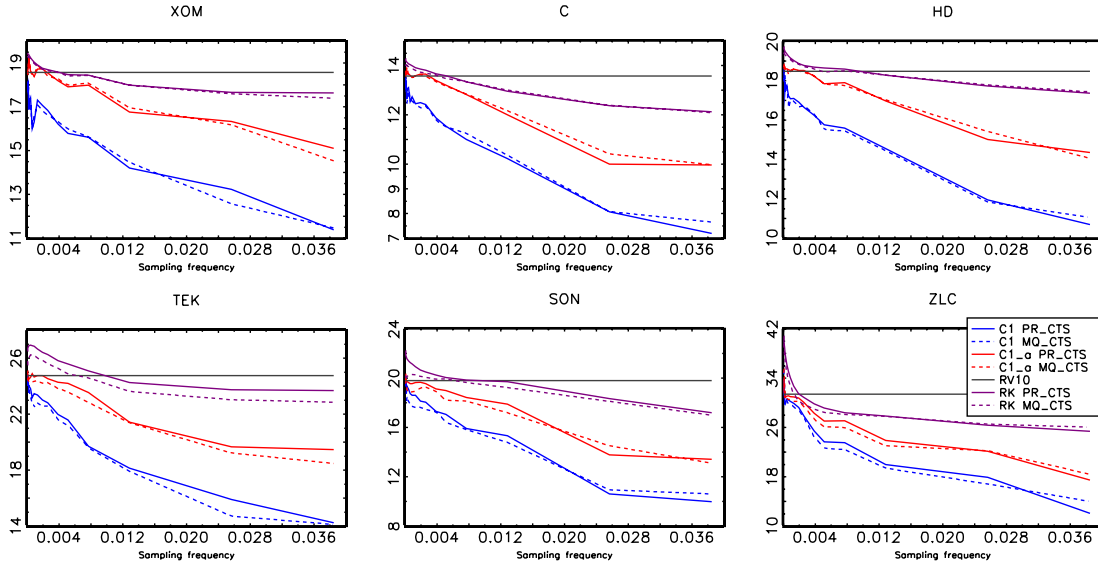


Figure 24: Averages of $100\sqrt{252Y_t}$ with $Y_t \in \{C_t^n(1), C_{t,a}^n(1), RV, RV10, RK\}$ for different values of Δ_n using CTS. $C_t^n(1)$ and $C_{t,a}^n(1)$ based on an optimal choice of θ .

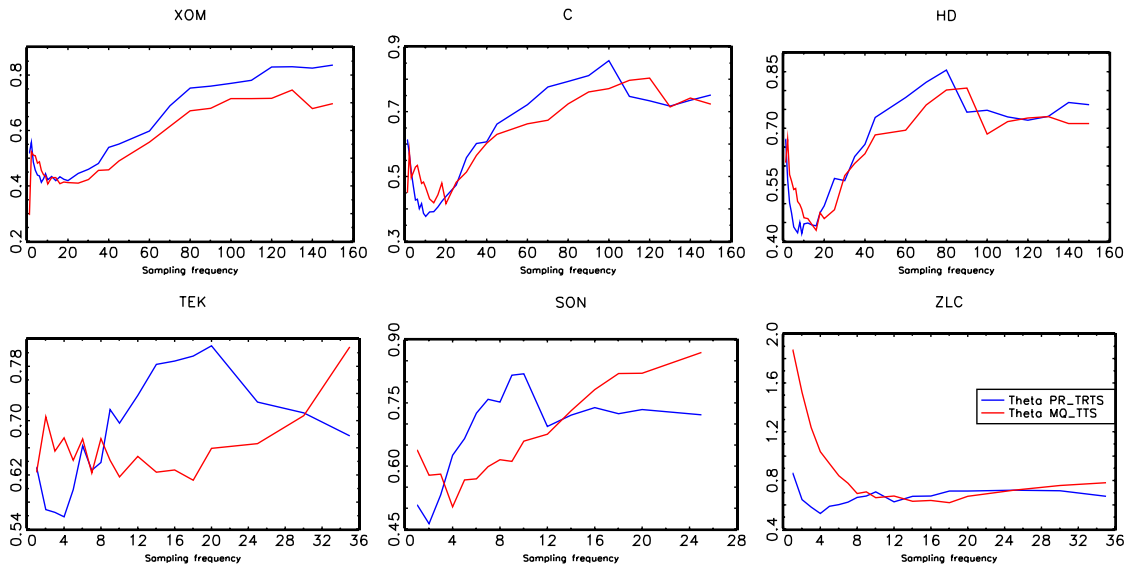


Figure 25: Average θ^* in dependence of Δ_n using T(R)TS.

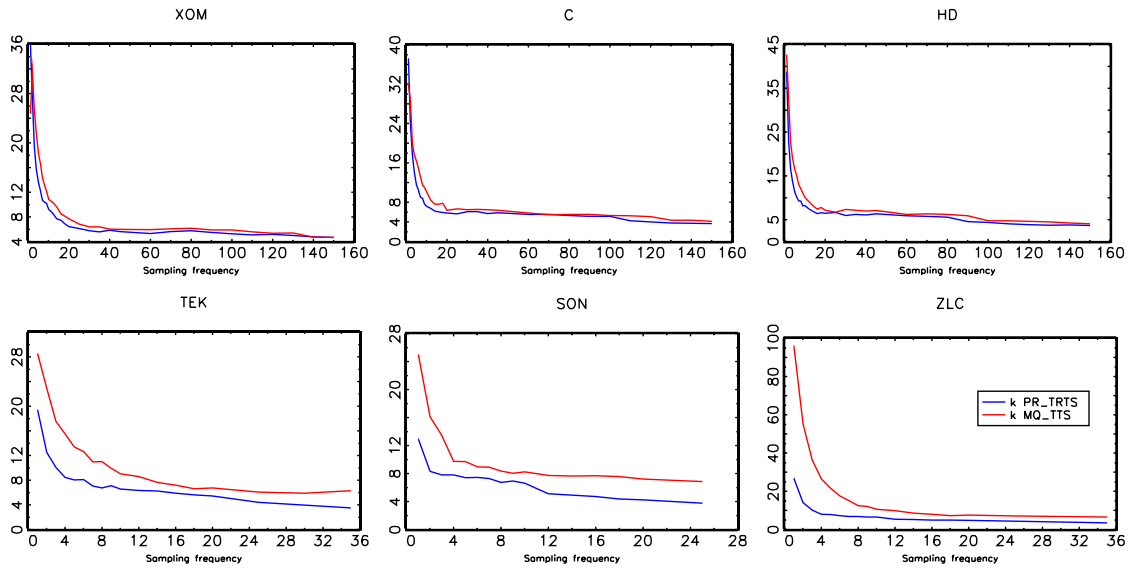


Figure 26: Average k_n^* in dependence of Δ_n using T(R)TS.

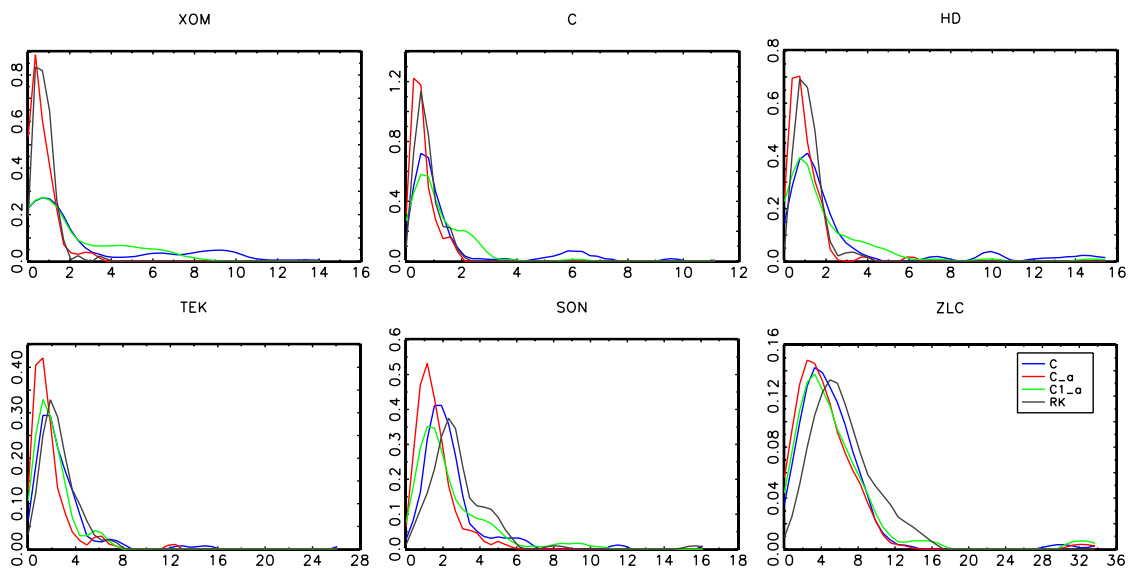


Figure 27: Discrepancy measures \tilde{D}_t based on Euclidean distances between TRTS PR, TTS MQ, 3 sec CTS PR and 3 sec CTS MQ.

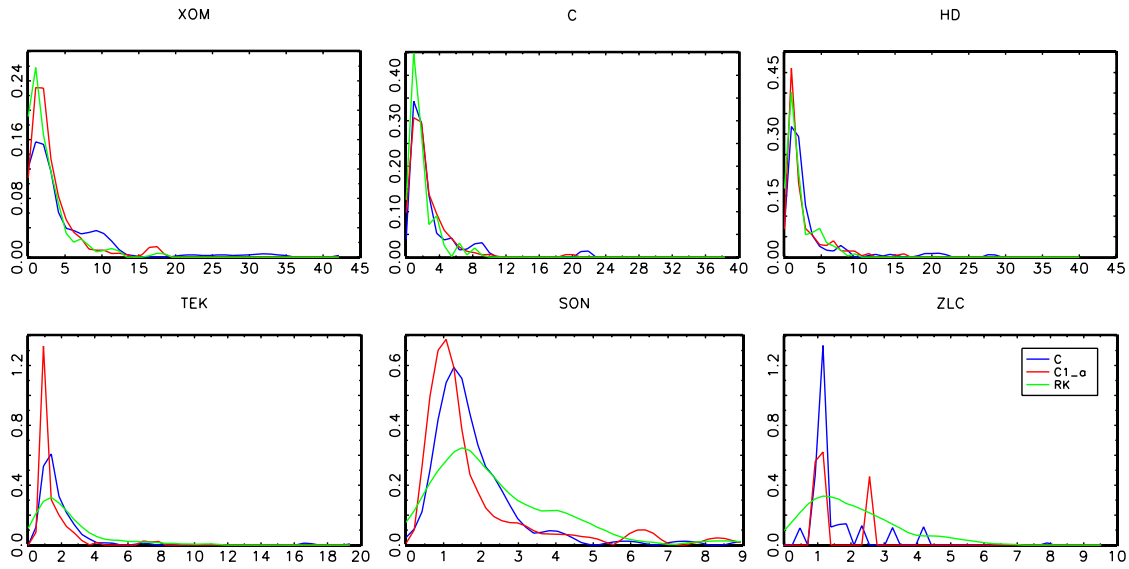


Figure 28: Relative discrepancy measures $\tilde{D}_t(\cdot)/\tilde{D}_t(C_{t,a}^n)$ based on Euclidean distances between TRTS PR, TTS MQ, 3 sec CTS PR and 3 sec CTS MQ.

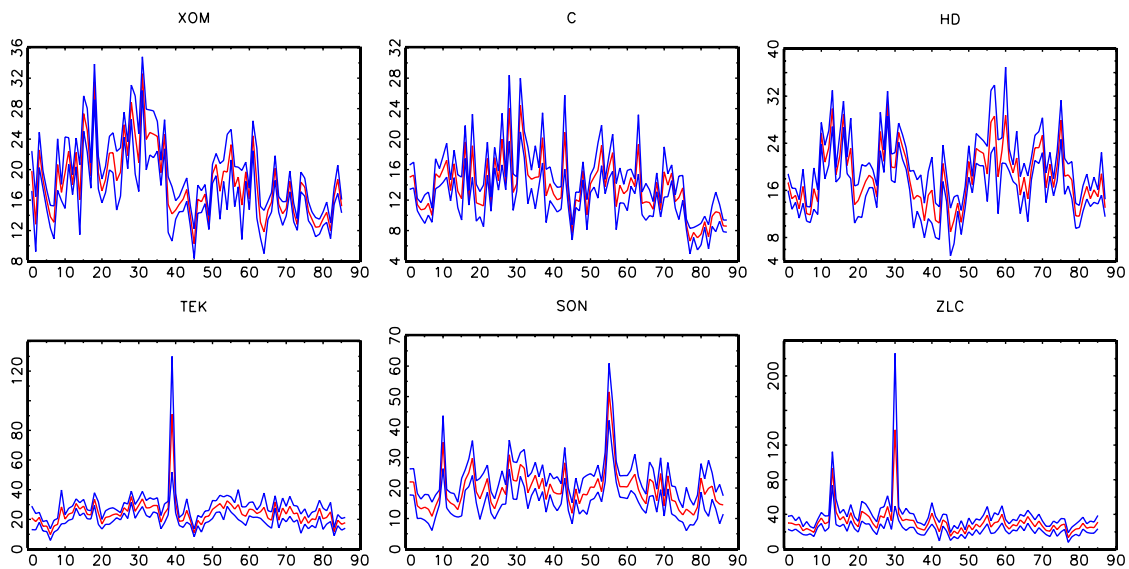


Figure 29: Time series plot of $100\sqrt{252C_{t,a}^n}$ with 95% jump robust confidence intervals. Based on TRTS.

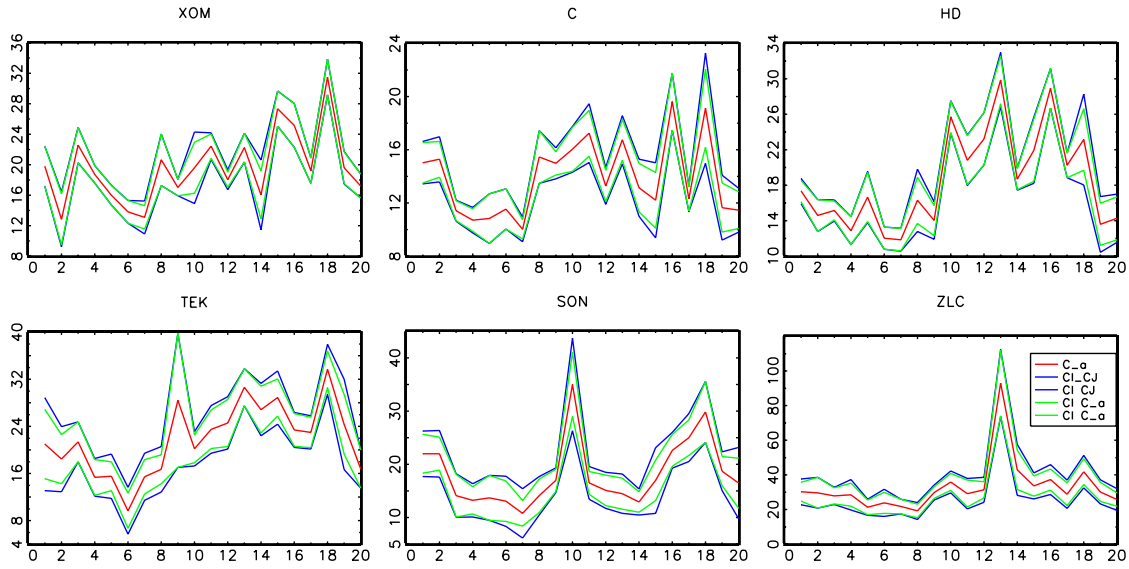


Figure 30: Time series plot of $100\sqrt{252}C_{t,a}^n$ with 95% confidence intervals computed based $\hat{\Gamma}_{t,a}^n$ and $\Gamma_{t,a}^n$. Based on TRTS.

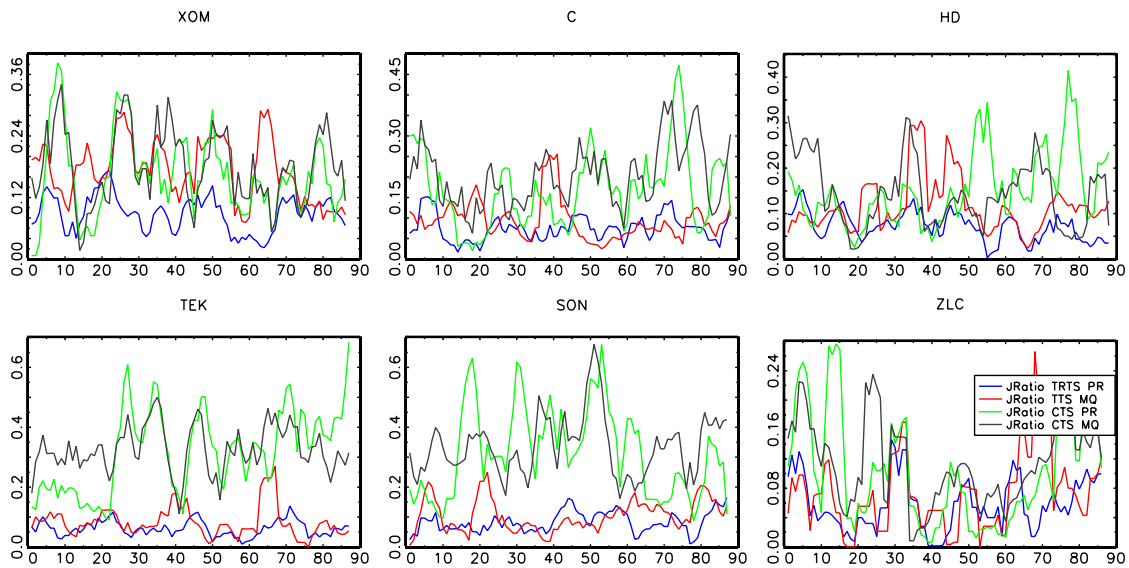


Figure 31: Time series plot of $BT/C_{t,a}^n$. Based on highest frequency T(R)TS and 3 sec CTS.

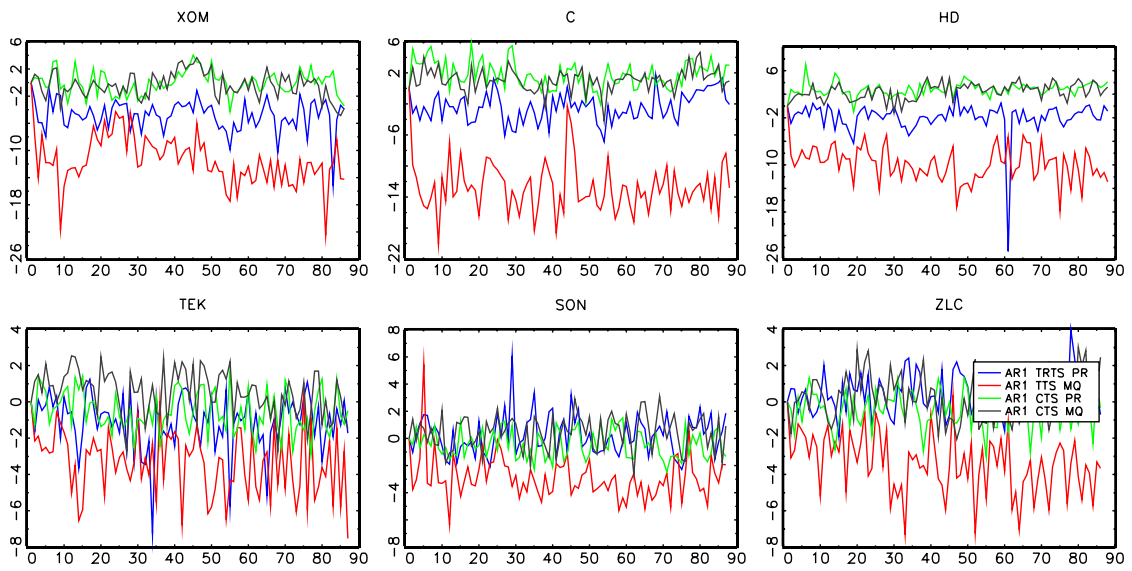


Figure 32: Time series plot of AR(1) test statistic S_n . Based on highest frequency T(R)TS and 3 sec CTS.

CFS Working Paper Series:

| No. | Author(s) | Title |
|---------|---|---|
| 2010/16 | Tullio Jappelli | Economic Literacy: An International Comparison |
| 2010/15 | Bartholomäus Ende Marco Lutat | Trade-throughs in European Cross-traded Equities After Transaction Costs – Empirical Evidence for the EURO STOXX 50 – |
| 2010/14 | Terrence Hendershott Albert J. Menkveld | Price Pressures |
| 2010/13 | Sarah Draus | Does Inter-Market Competition Lead to Less Regulation? |
| 2010/12 | Kai-Oliver Maurer Carsten Schäfer | Analysis of Binary Trading Patterns in Xetra |
| 2010/11 | Annamaria Lusardi Olivia S. Mitchell | How Ordinary Consumers Make Complex Economic Decisions: Financial Literacy and Retirement Readiness |
| 2010/10 | Annamaria Lusardi Daniel Schneider Peter Tufano | The Economic Crisis and Medical Care Usage |
| 2010/09 | Annamaria Lusardi Olivia S. Mitchell Vilsa Curto | Financial Literacy among the Young: Evidence and Implications for Consumer Polic |
| 2010/08 | Volker Wieland Maik Wolters | The Diversity of Forecasts from Macroeconomic Models of the U.S. Economy |
| 2010/07 | Antje Brunner Jan Pieter Krahen | Hold-Up in Multiple Banking: Evidence from SME Lending |

Copies of working papers can be downloaded at <http://www.ifk-cfs.de>