

Qin, Duo

**Working Paper**

## Is the Rising Services Sector in the People's Republic of China leading to Cost Disease?

ERD Working Paper Series, No. 50

**Provided in Cooperation with:**

Asian Development Bank (ADB), Manila

*Suggested Citation:* Qin, Duo (2004) : Is the Rising Services Sector in the People's Republic of China leading to Cost Disease?, ERD Working Paper Series, No. 50, Asian Development Bank (ADB), Manila, <https://hdl.handle.net/11540/1907>

This Version is available at:

<https://hdl.handle.net/10419/109260>

**Standard-Nutzungsbedingungen:**

Die Dokumente auf EconStor dürfen zu eigenen wissenschaftlichen Zwecken und zum Privatgebrauch gespeichert und kopiert werden.

Sie dürfen die Dokumente nicht für öffentliche oder kommerzielle Zwecke vervielfältigen, öffentlich ausstellen, öffentlich zugänglich machen, vertreiben oder anderweitig nutzen.

Sofern die Verfasser die Dokumente unter Open-Content-Lizenzen (insbesondere CC-Lizenzen) zur Verfügung gestellt haben sollten, gelten abweichend von diesen Nutzungsbedingungen die in der dort genannten Lizenz gewährten Nutzungsrechte.

**Terms of use:**

*Documents in EconStor may be saved and copied for your personal and scholarly purposes.*

*You are not to copy documents for public or commercial purposes, to exhibit the documents publicly, to make them publicly available on the internet, or to distribute or otherwise use the documents in public.*

*If the documents have been made available under an Open Content Licence (especially Creative Commons Licences), you may exercise further usage rights as specified in the indicated licence.*



<http://creativecommons.org/licenses/by/3.0/igo>

ADB

ERD Working Paper  
ECONOMICS AND RESEARCH DEPARTMENT SERIES  
No. 50

Is the Rising Services Sector  
in the People's Republic of China  
Leading to Cost Disease?

Duo Qin

April 2004

Asian Development Bank

<http://www.adb.org/Economics>

ERD Working Paper No. 50

**IS THE RISING SERVICES SECTOR  
IN THE PEOPLE'S REPUBLIC OF CHINA LEADING  
TO COST DISEASE?**

**DUO QIN**

April 2004

*Duo Qin is an economist in the Macroeconomics and Finance Research Division, Economics and Research Department, Asian Development Bank.*

Asian Development Bank  
P.O. Box 789  
0980 Manila  
Philippines

©2004 by Asian Development Bank  
April 2004  
ISSN 1655-5252

The views expressed in this paper  
are those of the author(s) and do not  
necessarily reflect the views or policies  
of the Asian Development Bank.

## **FOREWORD**

The ERD Working Paper Series is a forum for ongoing and recently completed research and policy studies undertaken in the Asian Development Bank or on its behalf. The Series is a quick-disseminating, informal publication meant to stimulate discussion and elicit feedback. Papers published under this Series could subsequently be revised for publication as articles in professional journals or chapters in books.

## CONTENTS

Abstract	vii
I. Introduction	1
II. An Overview	2
III. Labor Productivity and Economic Growth	7
IV. Signs of Cost Disease?	20
V. Reflections and Summary	22
Appendix	24
References	25

## **ABSTRACT**

The focal issue of this investigation is whether the rising services sector would contract cost disease and stagnate economic growth in People's Republic of China (PRC), as diagnosed generally of tertiarization in Baumol's unbalanced growth model. Using provincial panel data for 1985-2001, the paper examines how labor productivity of the services sector has been associated with GDP growth and whether the services sector has shown signs of cost disease. The key findings are: the currently positive contribution of the services sector to growth is largely due to shifts of labor from agriculture into services; however, signs of cost disease are discernible from demand for service products, wage determination, and labor input demand of the services sector.

## I. INTRODUCTION

The last two decades have witnessed rapid economic development in the People's Republic of China (PRC). The development is accompanied by significant structural transformation in various aspects of the economy. In particular, industrialization and urbanization have stimulated enormous demand for services. Growth in services has been phenomenal since 1990, as average income level soared from around US\$200 per annum to US\$1,000 in 2002 in terms of per capita gross domestic product (GDP). The real take-off of a services economy is expected, however, to occur in the PRC in the near future on two accounts. First, tertiarization or emergence of a "services economy" is widely recognized as a natural process for a developing economy to evolve into a developed or post-industrial economy (see, for example, Illeris 1996 and Sundrum 1990). Second, promotion of "tertiary industries" has recently been designated to a prominent place in the Tenth 5-year Plan (2001-2005) of the PRC.<sup>1</sup>

The government strategy of promoting tertiary industries is primarily aimed at alleviating the acute labor supply pressure at relatively low expenses of material and capital resources. Moreover, growing service industries would help strengthen the nonstate-owned business sector and therefore increase overall economic efficiency, and would also help accelerate trade and technological progress, as generally found in developing economies, (e.g., see Riddle 1986 and Mattoo et al. 2001). Yet, little has been discussed about the possible downside of the strategy.

One influential theory about the negative effect of tertiarization on growth is Baumol's unbalanced growth model (Baumol 1967, see also Baumol et al. 1985). The model maintains that tertiarization is likely to decelerate overall productivity improvement of an economy and hence stagnate economic growth. This is because growth of the services sector is typically characterized by faster expansion of service employment than of service output, due mainly to the labor-intensive nature of the sector, relative to the agricultural and the manufacturing sectors. Such effect is often referred to as "cost disease", as tertiarization is seen as dominantly demand-driven to the extent that demand for services becomes price inelastic and encourages the wage level of the services sector to grow faster than its labor productivity growth.

The present study investigates empirically how much and in what ways the services sector absorbs labor and contributes to overall economic growth, and whether there are discernible signs of cost disease in the PRC. Panel data of 30 provinces<sup>2</sup> for the period 1985-2001 are used for the purpose. The investigation starts from an overview, in the following section, of the services sector in relation to overall economic growth. In Section III, two types of decomposition methods are employed to examine how labor productivity of the services sector has been associated with GDP growth via its association to the growth of the primary and the secondary sectors, frequently known

---

<sup>1</sup> According to the plan, the share of the services sector in GDP is to rise to 36 percent by 2005 from 33 percent in 2000; employment of the services sector is to increase 4 percent per annum on average (see Li 2001).

<sup>2</sup> Beijing, Shanghai, and Tianjin are counted as provinces, but Chongqing, the new autonomous municipality, is still regarded as part of Sichuan in our sample. A list of the province abbreviations is given in the appendix.



as the agricultural sector and the manufacturing sector. Econometric analysis is carried out in Section IV to detect signs of cost disease characterized in Baumol's unbalanced growth model. Section V concludes. It is well known that statistical measuring of the services sector is full of difficulties and there is significantly downward mismeasurement in service output and productivity (e.g., see Wolff 1999, Triplett and Bosworth 2001). However, the present study shall not go into these measurement issues.

## II. AN OVERVIEW<sup>3</sup>

The services sector of the PRC expanded at an average annual growth rate of over 9 percent during the 1990s. The expansion was accompanied by rapid income growth, as reflected in the average annual rate of 8.3 percent in terms of per capita GDP. The rising services sector has particularly helped to provide employment opportunities for the abundant Chinese labor market, with the current services share being 28 percent of total employment, more than double the 1980s figure of 13 percent, as shown in Figure 1. The increase apparently comes mostly from the agricultural sector, which has dwindled from nearly 70 percent in 1980 to 50 percent at the present in terms of its employment share. One of the most striking aspects, however, lies with the output share changes of the services sector. The output share of the services sector in nominal terms rises significantly from roughly one fifth in 1980 to one third currently, but the output share in real terms remains almost constant, as shown in Figure 1. The reverse is found from the secondary sector. Its nominal output share remains relatively unchanged while its share in constant prices rises. The output share of the primary sector has decreased in both nominal and constant terms. These phenomena suggest that there is marked disparity in the movement of the sectoral prices.

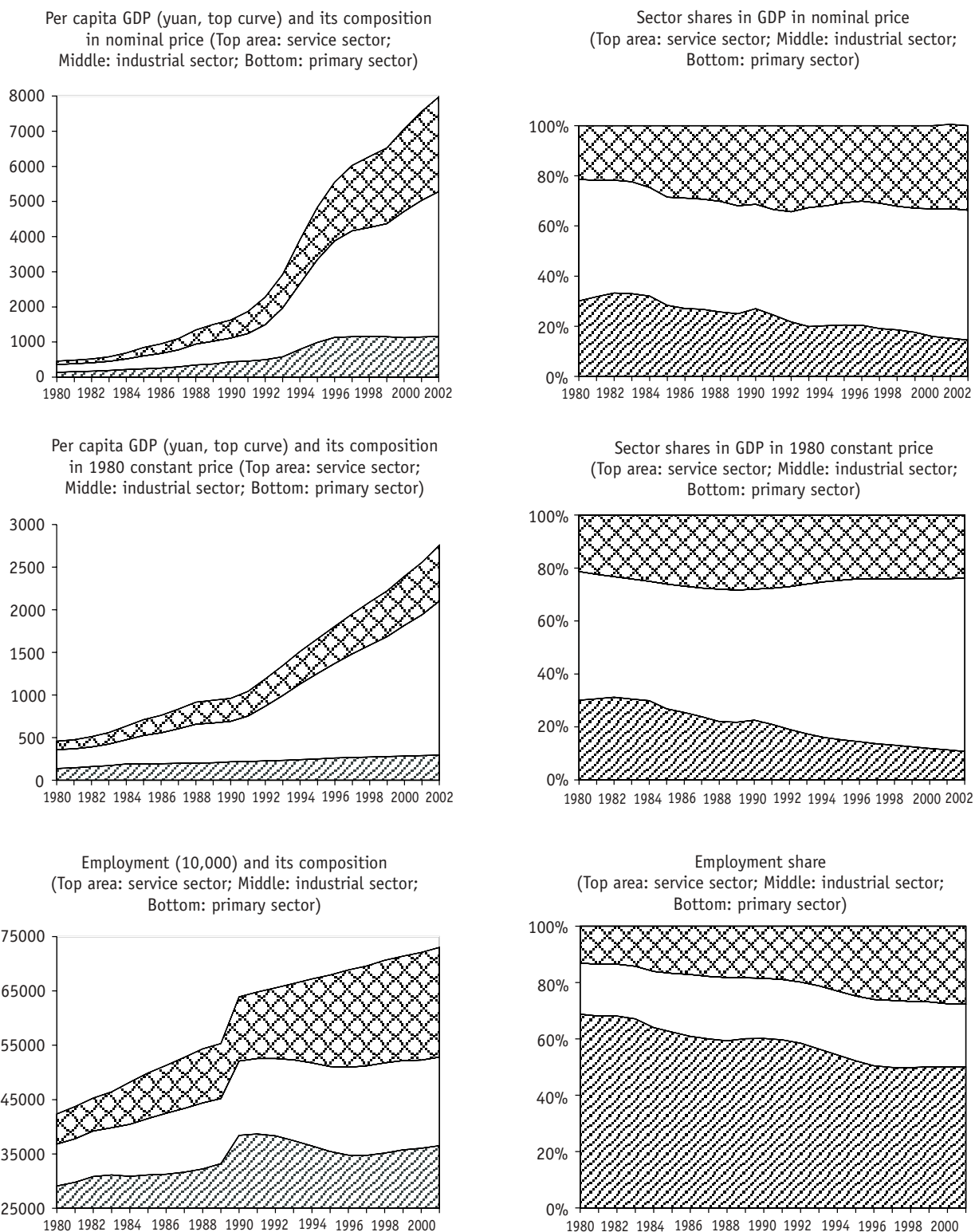
In Figure 2, the services sector shares in nominal GDP and in employment are plotted at the provincial level. The provinces are ranked by per capita GDP of the 2001 statistics. The richer a province, the higher its share in the services sector. The nominal output shares are below 40 percent for most of the provinces. Only Beijing and Shanghai exceed 50 percent, just about comparable to the level of advanced economies. Employment shares are remarkably low for inland and poor provinces. It is clear that the PRC is still at the very beginning of tertiarization and that there is great potential for employment expansion in the services sector.

Figure 3 presents a summary view of labor productivity, wage rates, and labor costs of the three sectors. The real output per labor in both the primary and the tertiary sectors is shown to have hardly grown over the last two decades, in great contrast with the secondary sector (the top left panel). The output prices of the primary and the tertiary sectors have significantly outgrown that of the secondary sector, with the price of the tertiary sector getting in the lead toward the end of the 1990s (the bottom left panel). The nominal wage level of the services sector has grown in parallel with that of the secondary sector, gradually outpacing it since the mid-1990s, and inducing a rising gap in real unit labor cost between the two sectors (the right panels).<sup>4</sup> These phenomena remind us clearly of cost disease. However, it is the agricultural sector, rather than the manufacturing sector, which supplies abundant labor to the services sector, as shown in Figure

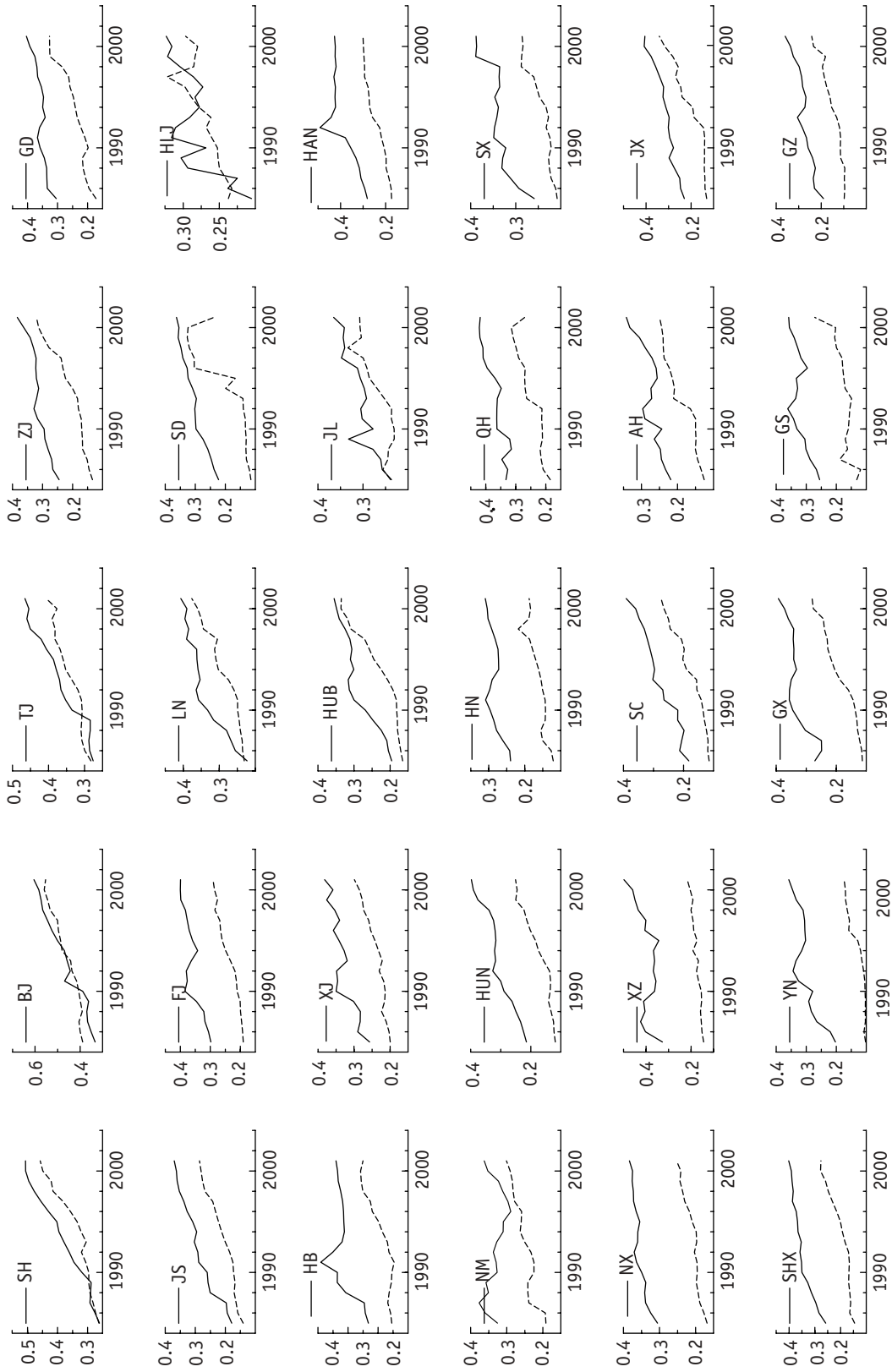
<sup>3</sup> In order to focus on the role of services to the whole economy in aggregate, we ignore the compositional changes, or the heterogeneous development, within the services sector in this paper.

<sup>4</sup> If  $Y$  denotes real output,  $P$  output price,  $L$  employment, and  $w$  wage rate, real unit labor cost is calculated by:  $\frac{wL}{PY}$

**FIGURE 1**  
**OUTPUT, EMPLOYMENT, AND THEIR COMPOSITION**



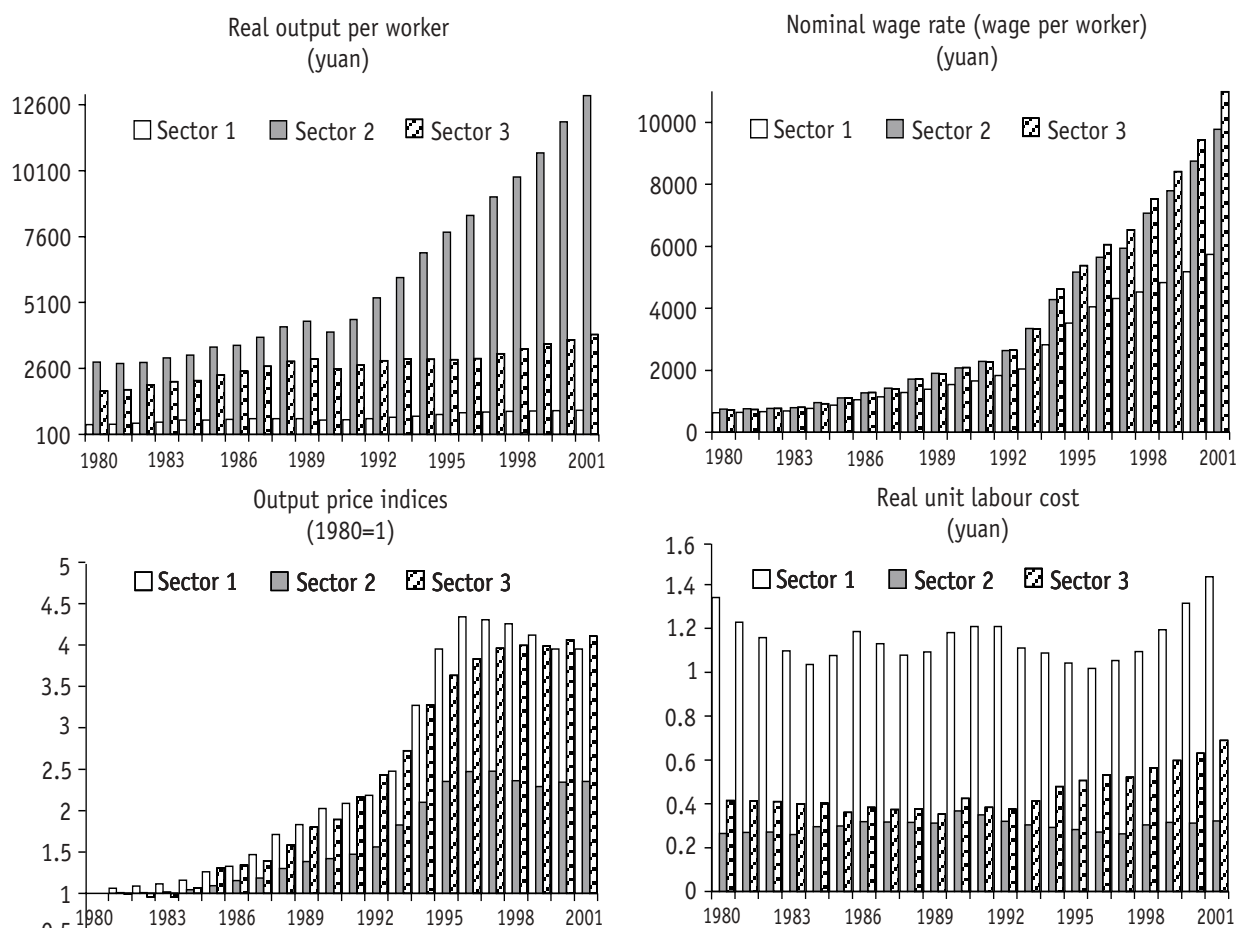
**FIGURE 2**  
**SHARES OF THE SERVICE SECTOR IN GDP (SOLID LINE) AND IN EMPLOYMENT (DOTTED LINE) BY PROVINCE**



Note: The provinces are ordered by per capita GDP in 2001 by row. Notice that units of the vertical axis are varied.

1 and confirmed by the persistently high level of real unit agricultural labor cost in Figure 3. Notice that the wage data used here may have significantly overestimated the per worker income in the agricultural sector. Nevertheless, low agricultural labor productivity is a widely acknowledged fact in the PRC (see, e.g., Yang and Zhou 1999). There are discernible signs of slowdown in the secondary sector growth, as shown from the stagnant shares of its employment and nominal output since the mid-1990s (see Figure 1).

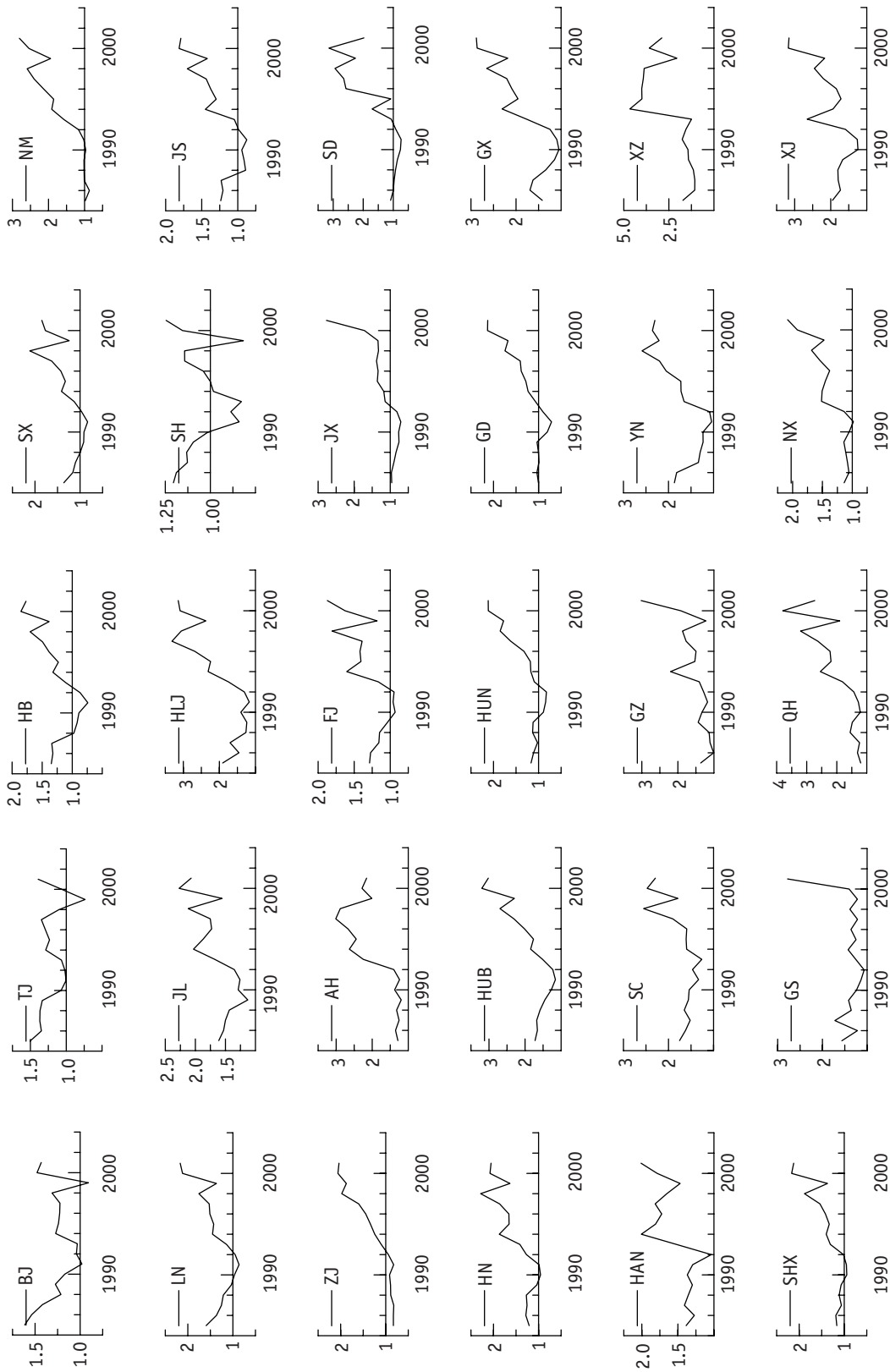
**FIGURE 3**  
**LABOR PRODUCTIVITY, WAGE RATE, AND LABOR COST**



Note: Real unit labor cost is defined as the product of nominal wage rate and employment divided by nominal output.

To further examine the extent of the gap in real unit labor cost between the service and the manufacturing sectors, we plot the ratio of the two labor cost series using provincial data in Figure 4. Interestingly, there is no obviously upward trend for the three large cosmopolitan cities, i.e., Beijing, Shanghai, and Tianjin, but the trend is discernible for most provinces. In terms of the absolute gap, real unit labor cost in the services sector has reached about twice that of the manufacturing sector in those relatively developed provinces, whereas it has exceeded twice and even reached three times in some inland and poor provinces. These suggest that the gap is likely to decrease in the long run as the economy further develops, but that the real unit labor cost of the services sector is likely to remain higher than that of the manufacturing sector.

**FIGURE 4**  
**RATIO OF REAL UNIT LABOR COSTS OF THE THIRD SECTOR TO THE SECOND SECTOR**



Note: The horizontal axis marks at 1, where the unit costs of the two sectors are identical; the units of the vertical axes may differ across provinces. See the note in Figure 3 for the definition of real unit costs; see the appendix for definitions of province acronyms.

The graphed evidence shows us that growth of the services sector in the PRC occurs mainly in its nominal output share and employment share at the expense of the agricultural share. The gap between nominal and real output shares of the services sector is apparently induced by rapidly rising prices of services as well as the rising wage bills of the sector. As labor cost is closely related to labor productivity, we shall focus our attention on the contribution of services to GDP via labor productivity in the next section.

### III. LABOR PRODUCTIVITY AND ECONOMIC GROWTH

In order to assess how the services sector contributes to the national level of labor productivity, two decomposition methods are applied to the panel data set in this section. The first follows the spirit of the decomposition method proposed by Berman et al. (1994). The second method is developed recently by Nordhaus (2001 and 2002).

Denote real GDP by  $Y$  and its three sectoral real outputs by  $Y_i$ , i.e.:

$$(1) \quad Y_t = \sum_{i=1}^3 Y_{it}$$

where sector one is the primary sector, sector two the manufacturing sector, and sector three the services sector. Denote labor productivity by  $q = Y/L$  where  $L$  represents employment. We have:

$$(2) \quad q_t = \frac{Y_{1t} + Y_{2t} + Y_{3t}}{L_t} = \sum_{i=1}^3 y_i = \sum_{i=1}^3 q_{it} l_{it} \quad \sum_{i=1}^3 l_{it} = 1$$

where  $y_i = \frac{Y_i}{L}$  can be viewed as representing approximately per capita real sector output,  $q_i = \frac{Y_i}{L_i}$  denotes sector labor productivity and  $l_i = \frac{L_i}{L}$  denotes employment share. The changes or growth of  $q_t$  in (2) should be:

$$(3) \quad \Delta q_t = \sum_{i=1}^3 \Delta q_{it} l_{it} + \sum_{i=1}^3 \Delta l_{it} q_{it}, \quad \Delta q_t = q_t - q_{t-1} \quad \text{or}$$

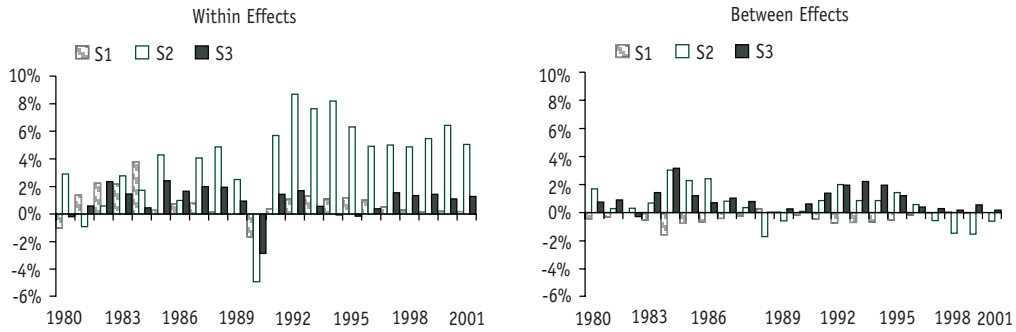
$$(3') \quad \dot{q}_t = \sum_{i=1}^3 \dot{q}_{it} l_{it} \left( \frac{q_i}{q} \right)_{t-1} + \sum_{i=1}^3 \Delta l_{it} \frac{q_{it}}{q_{t-1}}, \quad \dot{q}_t = \frac{q_t}{q_{t-1}} - 1$$

Let us call “within effects” the components in the first summation term on the right-hand side of (3) or (3’) and “between effects” the components in the second summation term, following the terminology of Berman et al. (1994). Figure 5 illustrates the time series of the six components of (3’) under the heading of within and between effects. The time series are calculated at both the national and regional levels. The national data set covers 1980-2001 whereas the regional set covers 1985-2001.<sup>5</sup>

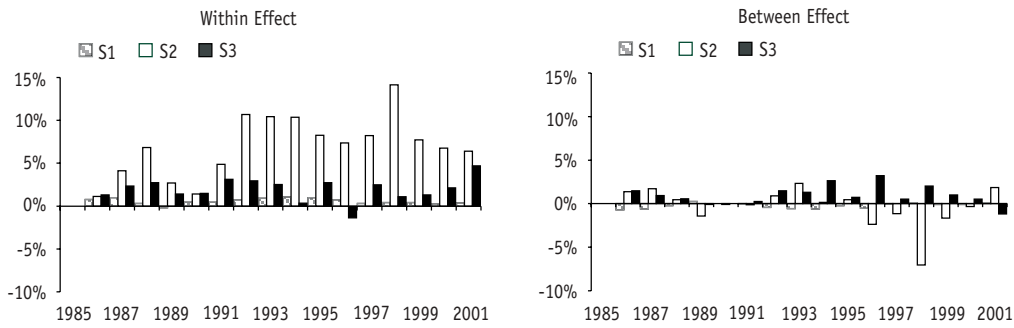
<sup>5</sup> The categorization of all the provinces into three regions follows mainly that by the National Bureau of Statistics of China. See the Appendix for the categorization.

**FIGURE 5**  
**DECOMPOSITION OF LABOR PRODUCTIVITY GROWTH BY (3')**

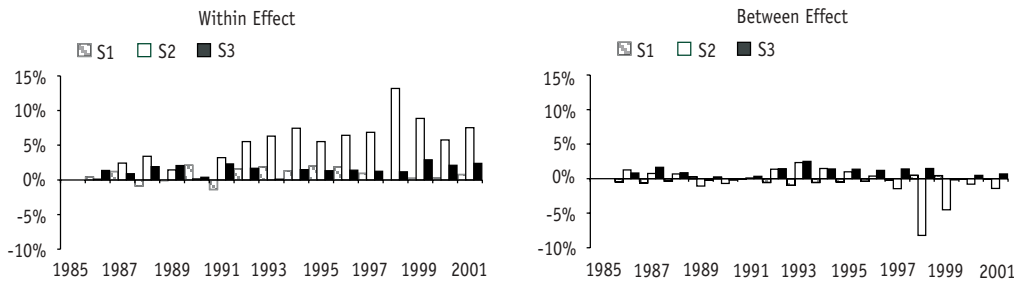
The whole economy



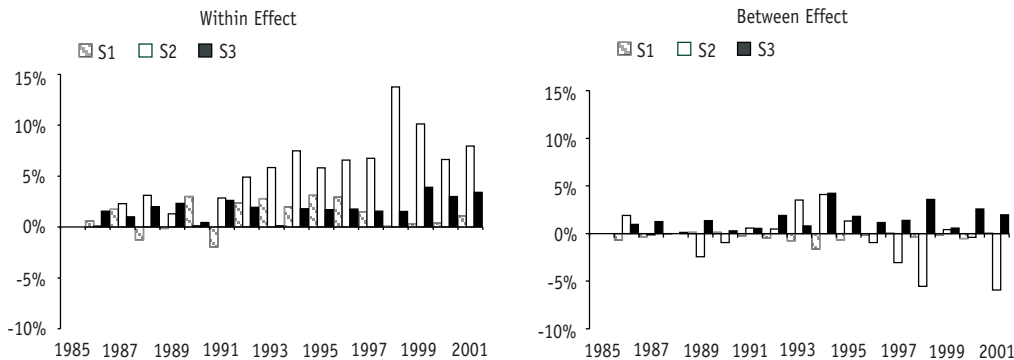
Coastal region



Central region



Western region



Several interesting features stand out from Figure 5.

- (a) Within effects have definitely played the dominant role in labor productivity improvement.
- (b) The secondary sector has remained the leader of the within effects, followed by the services sector.
- (c) The services sector, however, has outperformed the secondary sector in the between effects; in fact, services remain the only sector contributing positively to national labor productivity improvement through labor redistribution;
- (d) The 1990s have seen significantly higher productivity growth than the 1980s, led initially by the second sector of the coastal region with catching up by the central and western regions since the mid-1990s.
- (e) There was a significant rise in the within effects of the services sector in the late 1990s, whereas the within effects of the secondary sector levelled off, suggesting the growing importance of the services sector in the near future.
- (f) The diminishing between effects in the late 1990s, especially by the negative contribution of the secondary sector, suggest that sectoral labor redistribution remains the bottleneck for national productivity improvement.

In order to focus on the role of the services sector, let us evaluate the changes of  $q_t$  by the changes of  $y_{3t}$ , which can be regarded approximately as per capita consumption or demand of

services. Utilizing  $\sum_{i=1}^3 l_{it} = 1$  we have:

$$(4) \quad \frac{\Delta q_t}{\Delta y_{3t}} = \sum_{i=1}^2 \frac{\Delta q_{it}}{\Delta y_{3t}} l_{it} + \sum_{i=1}^2 \frac{\Delta l_{it}}{\Delta y_{3t}} q_{it} + 1$$

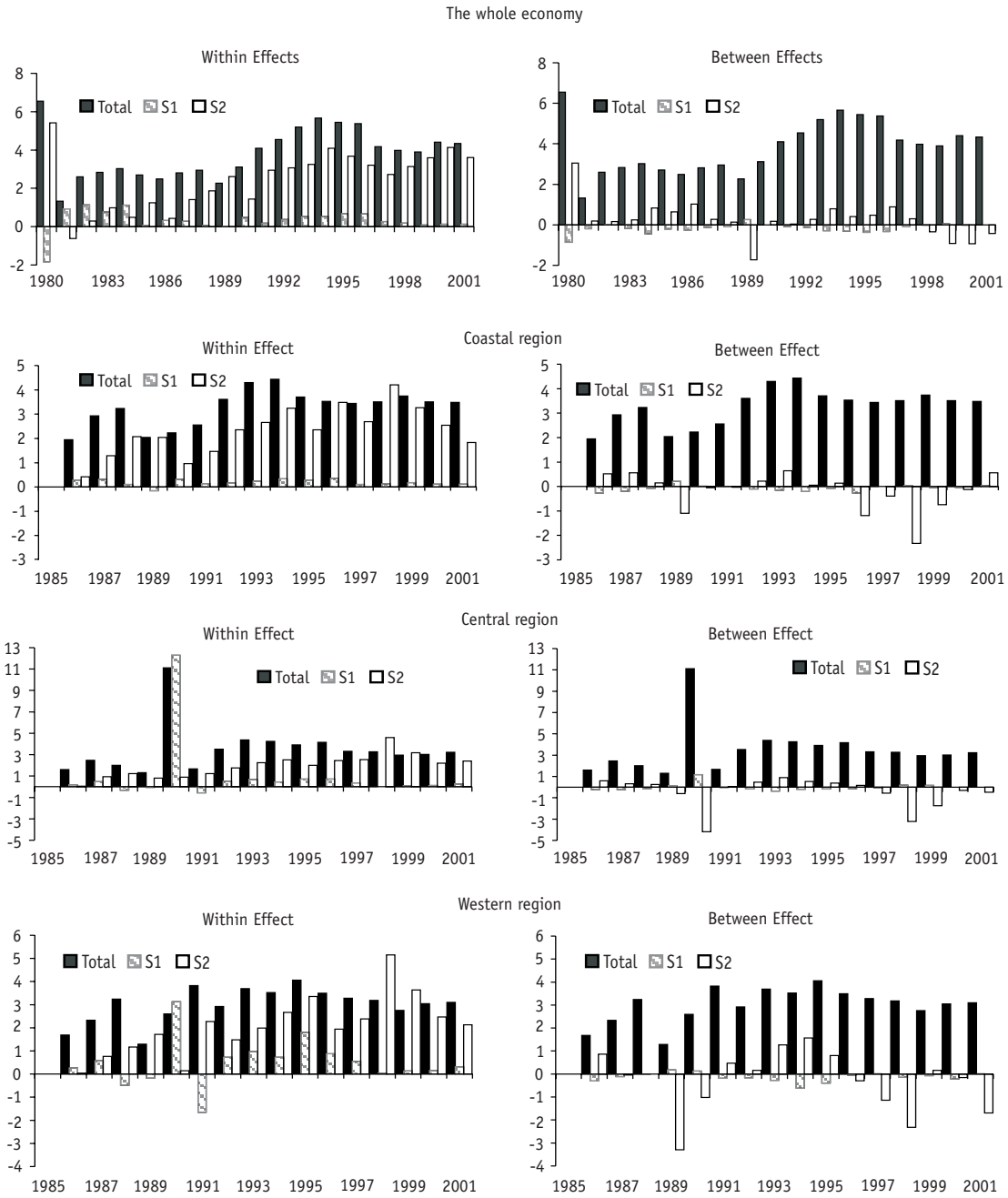
Again, we call “within effects” components in the summation term, and “between effects” components in the second summation term on the right-hand side of (4). Figure 6 shows the time series of these four components under the heading of “within” and “between” effects, together

with the time series of  $\frac{\Delta q_t}{\Delta y_{3t}}$ , denoted as the total effect.

It is reassuring that the services sector has made continuously positive contribution to national labor productivity growth, especially during the first half of the 1990s. The contribution is again dominant through the within effects, especially through the within effect on the manufacturing sector. This serves as supporting evidence to the theory by Oulton (2001), that the dooming effect of cost disease may disappear if the contribution of services used as vital intermediate inputs to the sectors of high productivity growth is taken into consideration. The present evidence shows that intermediate services input helps to improve the productivity of the manufacturing industries. The regional evidence on the within effects also shows a significantly leading role of the coastal region and a catching-up trend of the inland regions during the latter part of the 1990s. Similar to Figure 5, between effects are very small and turned to negative on the manufacturing sector in the late 1990s. This calls our attention to the question of what the overall effect is of a rapidly growing services sector on national labor productivity via employment redistribution.



**FIGURE 6**  
**GROWTH EFFECTS OF THE SERVICE SECTOR BY (4)**



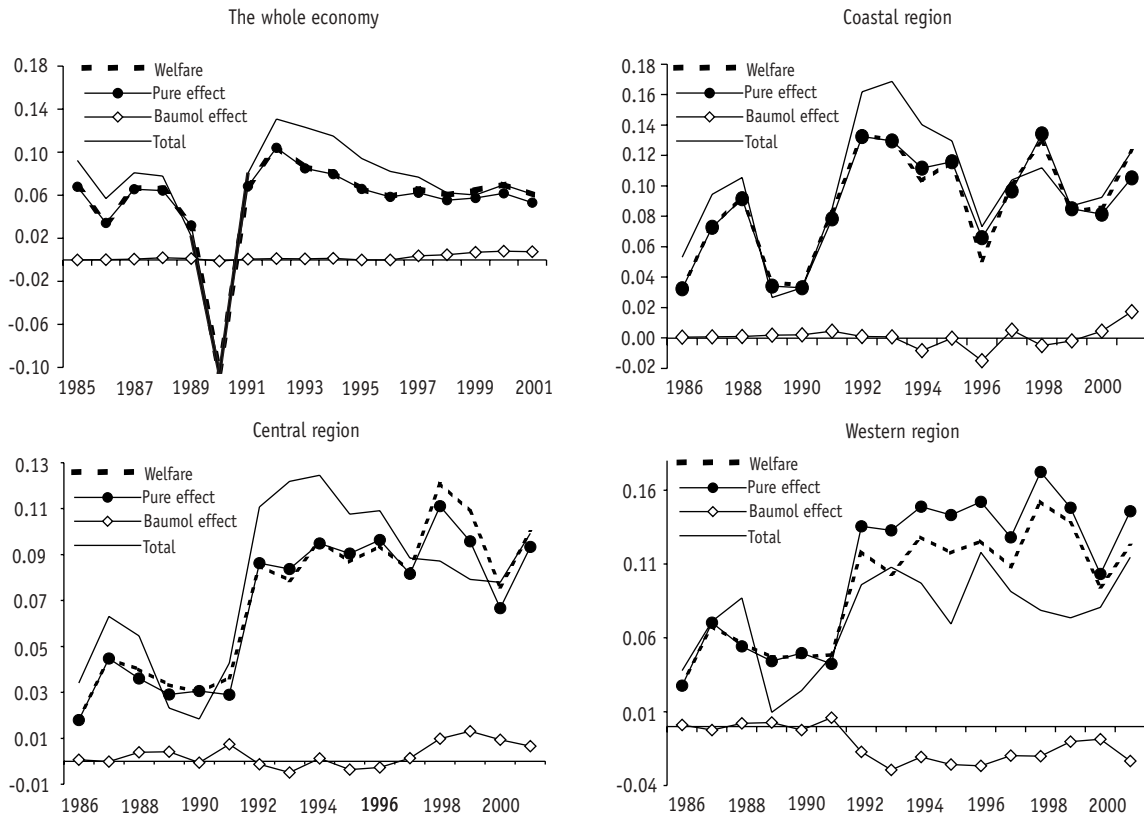
An intuitive way of measuring such effect is developed by Nordhaus (2001 and 2002). Instead of decomposing the growth effects of labor productivity by the accounting identity of GDP in (1) and (2), Nordhaus proposes to decompose labor productivity in accordance with welfare theory. Specifically, he decomposes the aggregate productivity growth into four types of effects: the pure productivity effect, the Baumol effect (i.e., interaction between productivity changes and output share changes), the Denison effect (i.e., the effect of changing employment shares on productivity growth), and the fixed-weight drift term. The four effects are denoted in sequence by the four terms on the right-hand side of the following equation:

$$(5) \quad \dot{q}_t = \sum_{i=1}^3 \dot{q}_{it} s_{i0} + \sum_{i=1}^3 \dot{q}_{it} (s_{it} - s_{i0}) + \sum_{i=1}^3 \dot{L}_{it} (s_{it} - L_{it}) + \sum_{i=1}^3 \dot{Y}_{it} (s_{it} - z_{it})$$

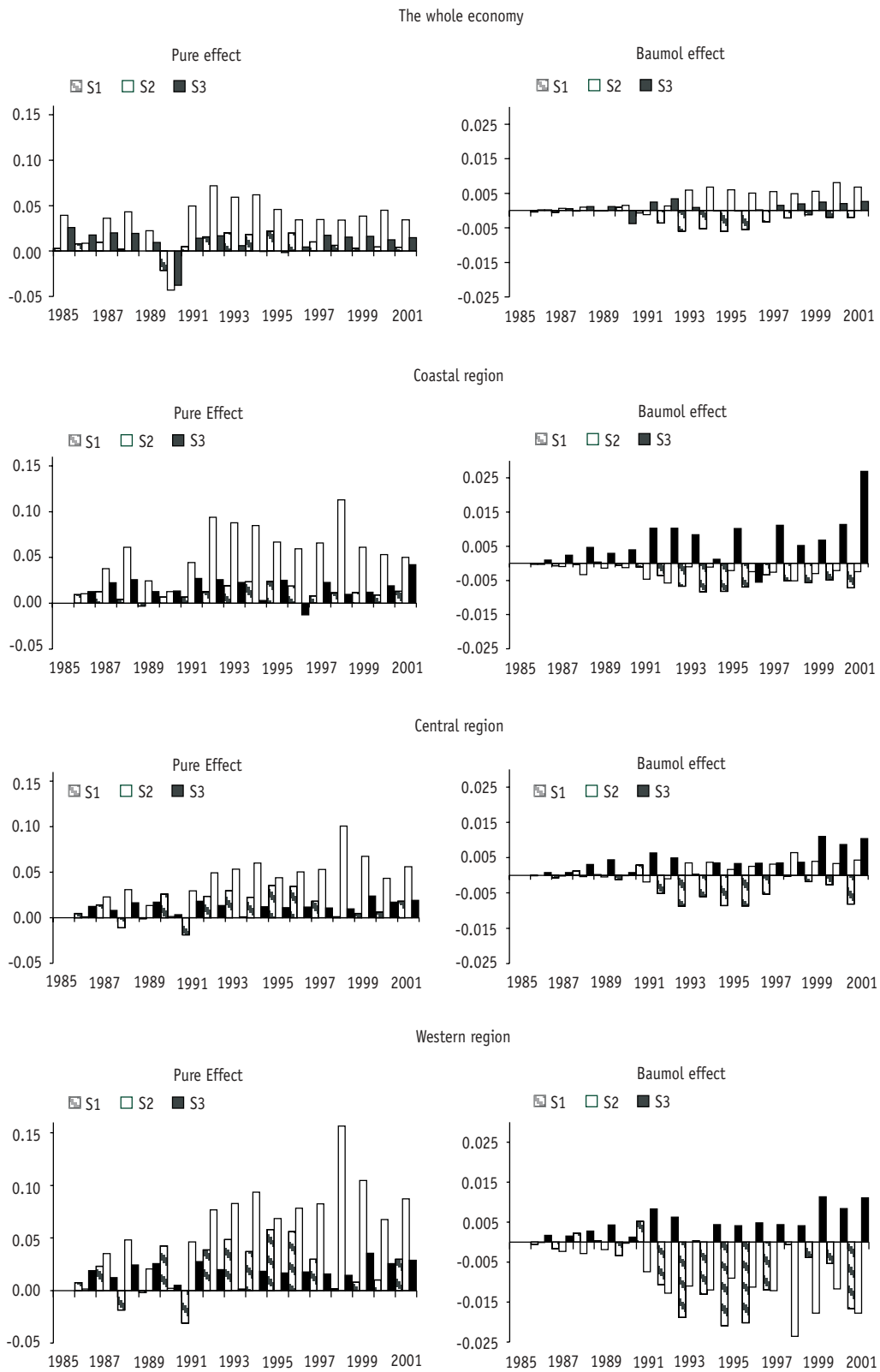
where  $s_i = \frac{P_i Y_i}{PY}$  denotes the nominal output share of sector  $i$  ( $P_i$  denotes output price of sector

$i$ ) and  $z_i = \frac{Y_i}{Y}$  the real share. Nordhaus shows that the sum of the first two terms, i.e., the pure productivity effect plus the Baumol effect, embodies the welfare gain in the aggregate productivity growth,  $\dot{q}_t$ . Figure 7 gives the time series of  $\dot{q}_t$  the pure productivity effect and the Baumol effect calculated using the national and the regional data sets. The sectoral components of these effects are given in Figure 8.

**FIGURE 7**  
**LABOR PRODUCTIVITY DECOMPOSITION**



**FIGURE 8**  
**PURE AND BAUMOL EFFECTS BY SECTOR TOTAL PRODUCTIVITY GROWTH**



It is discernible from Figure 7 that most of the total productivity growth,  $\dot{q}_t$  comes from welfare gain and that most of the welfare gain is brought about by pure productivity growth. The Baumol effect is very small in comparison and exhibits continuously negative values only for the western region. There is also a slight overall improvement in the Baumol effect toward the end of the 1990s. Detailed sectoral results in Figure 8 show that the manufacturing sector remains the major contributor to pure productivity growth, and that the contribution by the services sector rises as the contribution by the manufacturing sector levels off during the late 1990s. Again, the coastal region plays the leading role in the sectoral changes. Surprisingly, the services sector turns out to be the savior of the negative Baumol effects caused mainly by the agricultural sector, especially during the late 1990s, as shown in Figure 8. These results seem to suggest that fast economic growth and rise of the services sector in the PRC have apparently been a cure for cost disease.

What we find from Nordhaus' decomposition method actually reinforces what we find from the first decomposition method, namely, the services sector has contributed positively to GDP growth mainly via absorbing excess labor from the agricultural sector. However, we should be cautious in making inferences from the above result to cost disease, as the decomposition methods are not designed to identify price elasticity of demand for services and cost effectiveness in service production, or to discover behavioral patterns relating to the demand and supply of services. Reliable diagnosis of cost disease entails econometric modelling.

#### IV. SIGNS OF COST DISEASE?

This section is devoted to econometric tests of three key propositions underlying Baumol's unbalanced growth model. The first proposition states that, as average income level rises in an economy, the income elasticity of aggregate demand for services increases and may well exceed unity making the price elasticity insensitive. The second states that the labor input of the services sector is primarily driven by the aggregate demand for services and is scarcely curbed by labor cost. The third states that the wage level of the services sector follows closely that of the sector with the fastest productivity growth, rather than being determined by its own relatively low productivity level. The three propositions can be formed into three testable structural equations: a demand equation for services, a wage equation of the services sector, and a factor demand equation for labor input in the services sector.

However, simple estimation of these equations derived directly from Baumol's model has not produced satisfactory results (e.g., see Curtis and Murthy 1998). This is mainly because the model contains a number of simplifying assumptions that are too stringent to fit data directly. Here, we generalize the model in several ways while maintaining the spirit of the three propositions. The first generalization is to include all the three sectors of an economy, instead of just the manufacturing and the service sectors in the original model. The second is to adopt more general models than what were originally used. The third is to regard the theoretical equations as the long-run states of dynamically specified econometric equations in view of the time-series properties of data, and to choose the estimation methods accordingly. The final generalization is to utilize regional differences in the panel data for the inference of future development trends.

Let us start with the demand equation for services by using a standard demand model to explain  $y_3$ , which can be regarded approximately as per capita demand for services:

$$(6) \quad Y_3 = \Psi(t)P_1^{\psi_1}P_2^{\psi_2}P_3^{\psi_3}W^{\psi_4} \quad \sum_{j=1}^4 \psi_j = 0$$

where  $W$  is nominal wage rate and represents approximately per capita income,  $\Psi_0$  is a constant parameter and  $\Psi(t)$  a time effect parameter.<sup>6</sup> The condition of homogeneity of degree zero is assumed in the prices,  $P_j$ , and income,  $W$  in equation (6). The first proposition amounts to hypothesizing  $\psi_4 \geq 1$  and  $\psi_3 \approx 0$  in (6).

Next, we propose a simple wage equation for  $W_3$ :

$$(7) \quad W_3 = W_1^{\beta_1}W_2^{\beta_2}(P_3q_3)^{\beta_3} \quad \sum_{j=1}^3 \beta_j = 1$$

where  $W_j$  denotes nominal wage rate of sector  $i$  and  $B_0$  is constant parameter. Equation (7) approves of the second proposition if  $\beta_2 = 1$  and  $\beta_1 = \beta_3 = 0$ . The equation becomes a standard wage equation under perfect competition when  $\beta_1 = \beta_2 = 0$ , and approves of Cobb-Douglas production technology if  $\beta_3 = 1$

As for the labor input demand equation, a linear homogeneous production function is adopted with constant elasticity of substitution (CES) technology. Moreover, constant returns to scale is assumed for the long-run equilibrium state. We thus have:

$$(8) \quad Y_3 = \Lambda(t) \left[ \alpha_l L_3^\sigma + \alpha_k K_3^\sigma \right]^{1/\sigma}$$

where the elasticity of substitution is  $\sigma = \frac{1}{1-\delta}$  (when  $\sigma = 1$  (8) converges to Cobb-Douglas technology),  $\Lambda(t)$  is commonly used as an index of technological progress to represent total factor productivity (TFP), and  $\alpha_l$  and  $\alpha_k$  are the input share parameters for labor  $L$  and capital  $K$ . The demand for labor input conditional upon cost minimisation of (8) should be:

$$(9) \quad \begin{aligned} L_3 &= \alpha_l^\sigma \Lambda(t)^{-1} Y_3 w_3^{-\sigma} \quad \text{or} \\ l_3 &= \alpha_l^\sigma \Lambda(t)^{-1} y_3 w_3^{-\sigma} \end{aligned}$$

where  $w_3 = \frac{W_3}{P_3}$  is often referred to as real wage rate (see, for example, Hamermesh 1986). The bottom equation in (9) has the advantage of representing the employment share of the services sector. Notice that  $w_3$  is absent and  $\Lambda(t)$  is assumed to grow very slowly in Baumol's labor demand equation, which is purely demand driven.

In regard to the time-series properties of the panel data set, there are two types of econometric considerations. One is on model specification and the other on estimation. On model specification, the principle of dynamic specification approach is adopted (see Hendry 1995, see also Nickell 1986 for dynamic models of labor demand). The approach enables us to regard equations (6), (7), and (9) as long-run equilibrium-correction models (ECM) embedded in dynamically adequate

<sup>6</sup> Baumol's (1967) assumes  $\Psi(t) = e^{\Delta t}$  to capture the growth rate at which services are commercialized.

representations of the data generating processes. In view of the relatively short time series in the panel (17 observations), a first-order auto-regressive, distributed-lags model is used here as the general representation. This model can be easily reparameterized into an ECM to facilitate our focus on the long-run parameter estimates. The general format of a two-variable ECM using panel data is as follows:

$$\begin{aligned}
 \Delta \ln X_{1jt} &= \theta_0 + \theta_{0j} + \theta_t + \theta_1 \ln X_{1jt-1} + \theta_2 \ln X_{2jt-1} + \theta_3 \Delta \ln X_{2jt} + \varepsilon_{jt} \\
 (10) \quad &= \theta_0 + \theta_{0j} + \theta_t + \theta_1 \left[ \ln X_{1j} + \frac{\theta_2}{\theta_1} \ln X_{2j} \right]_{t-1} + \theta_3 \Delta \ln X_{2jt} + \varepsilon_{jt} \\
 & \quad j = 1, \dots, n
 \end{aligned}$$

where  $\theta_{0j}$  denotes individual effect and  $\theta_t$  the time effect. It is expected  $-1 \leq \theta_1 < 0$  for the embedded equilibrium-correction (EC) term (i.e., the term in the squared brackets) to take effect.

The EC term implies a long-run equilibrium equation:  $\ln X_{1j} = -\frac{\theta_2}{\theta_1} \ln X_{2j}$  with  $-\frac{\theta_2}{\theta_1}$  being the key parameter of interest in the estimation of (10). To accommodate into (10), equations (6), (7), and (9) are rewritten into the following long-run forms:

$$(6') \quad \ln y_{3j} = \ln \Psi(t) + \psi_2 \ln \left( \frac{P_2}{P_1} \right) + \psi_3 \ln \left( \frac{P_3}{P_1} \right) + \psi_4 \ln \left( \frac{W}{P_1} \right)$$

$$(7') \quad \ln W_{3j} = \beta_1 \ln W_{1j} + \beta_2 \ln W_{2j} + \beta_3 \ln (P_{3j} q_{3j})$$

$$(9') \quad \ln \frac{l_{3j}}{y_{3j}} = \sigma \ln \alpha_j - \ln \Lambda(t) - \sigma \ln w_{3j}$$

However, it is well-known that the parameter estimates of a long-run EC equation are likely to be afflicted by collinearity when the corresponding variables are significantly trended. This makes us concerned particularly about equation (6) since the strong trend in  $(W/P_1)$  would be collinear with  $\Psi(t)$ . On reflection, it is questionable whether it is appropriate to use  $\Psi(t)$  in the long-run EC term since the rate of commercialization of the services sector, which  $\Psi(t)$  is to represent, should be a transitory feature after all. In the context of a dynamic model, such rate is already embodied in short-run growth variables, such as  $\Delta \ln X_{2jt}$  in (10). Therefore, the term  $\Psi(t)$  in (6') is to be ignored in the dynamic model specification. On the other hand, we also try to incorporate the transitory contribution of services to other sectors as intermediate inputs, as postulated by Oulton (2001), into the dynamic ECM based on (6'). More precisely, we introduce  $\Delta \ln Y_{2t}$  as an additional short-run variable.

In regard to panel data information, we can also exploit regional differences to get a longer term perspective than the 16-year sample period. In other words, we can estimate different regions separately such that the results from more advanced regions can be used as indicating future developments for the poorer regions. This amounts to relaxing the homogeneous parameter restrictions in (10). On the basis of the three-region division, we have:

$$(10') \quad \Delta \ln X_{1jt} = \theta_0 + \theta_{0j} + \theta_t + \sum_{k=1}^3 \theta_{1k} \left[ \ln X_{1jk} + \frac{\theta_{2k}}{\theta_{1k}} \ln X_{2jk} \right]_{t-1} + \sum_{k=1}^3 \theta_{3k} \Delta \ln X_{2jkt} + \varepsilon_{jt}$$

$$j = 1, \dots, n$$

We refer, thereafter, to (10) as the full panel model and (10') as the regional model.

As for estimation, our key objective is to estimate the long-run parameters of interest in equations (6'), (7'), and (9'). The parameters are estimated by three methods, considering the fact that the time series of some variables in these equations are likely to contain roots near to unity. The first is simply to estimate static regression models based on (6'), (7'), and (9') by the feasible GLS (Generalised Least Squares) method. This method should give us fairly consistent estimates of the long-run parameters when the variables in the static models are nonstationary and cointegrated, as the case is similar to the OLS (ordinary least squares) estimation of a static model of time-series variables that are nonstationary and cointegrated, see Engle and Granger (1987). The second method is to derive the long-run solution from the GLS estimates of the first-order auto-regressive, distributed-lags model of equations (6'), (7'), and (9'). The third method is to estimate the above dynamic model in the ECM format of (10) by the GMM (Generalised Method of Moments) or combined GMM method, see Arellano and Bover (1995) and also Blundell and Bond (1998). The estimation is normally carried out on the first line of (10) and the long-run parameters are then derived from the estimates of  $\theta_1$  and  $\theta_2$ . GMM estimates should be more efficient in principle, but they may suffer from poor robustness and weak instruments if some of the regressors exhibit evident nonstationarity; see Arellano and Honoré (2000) and Phillips and Moon (2000). The three sets of parameter estimates are considered in combination in our inference.

In order to check parameter constancy, estimation is run for four different sample sizes: full sample (i.e., 1985-2001), 1988-2001, 1990-2001, and 1992-2001. The three sets of the long-run parameter estimates of (6'), (7'), and (9') are reported respectively in Tables 1, 3, and 5. Short-run variables remaining significant through the dynamic specification are listed in these tables but their parameter estimates are not reported. Key diagnostic test results of the GMM estimation of the three equations are reported in Tables 2, 4, and 6 respectively. These include Sargan test for the validity of overidentifying instruments and residual autocorrelation tests. It is extremely difficult, as expected and shown in Tables 4 and 6, to get valid instruments when the equation in estimation contains variables with evident nonstationarity, such as the nominal wage series in (7'). The GMM estimates vary considerably with different instruments under such circumstance. We should hence interpret these estimates with caution. Notice that the residual autocorrelation test results can be seen as validating the first-order dynamic model.<sup>7</sup>

Let us now look at the key estimation results. We see, from the demand equation for  $y_3$  in Table 1, that the hypothesis  $\psi_3 \approx 0$  is confirmed, as this parameter drops out of the model for being statistically insignificant. Chinese consumers are indeed insensitive to prices of service products, in spite of the rapid price hike, as shown in Figure 3. Meanwhile, the significantly negative cross price elasticity  $\psi_2$  indicates a strong price effect of manufactured goods. However, this price effect would not help much to dampen demand for  $y_3$  since the growth of  $P_2$  has remained the slowest of the three sectors (see Figure 3). In fact,  $P_2$  is likely to stimulate  $y_3$  as the prices of many

<sup>7</sup> Significant first-order serial correlation is an expected feature of the GMM method, see Doornik and Hendry (2001, Chapter 7, vol. 3) for details of the residual autocorrelation test.

**TABLE 1**  
**MAIN ESTIMATES OF DEMAND FOR SERVICES (EQUATION (6') WITHOUT TIME EFFECTS)**

SAMPLE	$\psi_1 = -(\psi_2 + \psi_4)$				$\psi_2$ -(t value)				$\psi_4$ (t value)			
	1985-2001	1988-2001	1990-2001	1992-2001	1985-2001	1988-2001	1990-2001	1992-2001	1985-2001	1988-2001	1990-2001	1992-2001
Full panel												
GLS for S. M.	— 0.033	— 0.101	-0.06 0.004	—	— 0.935 (-19.9)	— 0.826 (-17.7)	— 0.838 (-17.2)	— 0.809 (-18.5)	0.968 (43.3)	0.927 (49.0)	0.898 (45.6)	0.805 (44.4)
LR GLS for D. M.	— 0.457	— 0.492	— 0.485	— 0.366	— 0.767 (-4.37)	— 0.784 (-3.203)	— 0.458 (-2.322)	— 0.552 (-2.41)	1.224 (12.45)	1.276 (8.85)	0.943 (11.9)	0.918 (9.29)
GMM for D. M.	0.241	0.364	0.235	0.423	-1.46 (-3.74)	— 1.703 (-2.66)	— 1.224 (-2.29)	— 1.446 (-1.94)	1.219 (2.25)	1.338 (3.23)	0.989 (2.3)	1.022 (1.67)
Coastal region												
GLS for S. M.	0.386	0.141	0.226	0.149	— 1.218 (-14.1)	— 0.997 (-10.3)	— 1.045 (-10.1)	-0.9 (-9.83)	0.832 (22.9)	0.856 (26.5)	0.819 (22.8)	0.751 (23.3)
LR GLS for D. M.	— 1.138	— 1.694	— 1.157	— 0.416	— 0.217 (-0.56)	0.242 (0.34)	0.212 (0.415)	— 0.404 (-2.23)	1.355 (7.62)	1.452 (5.13)	0.945 (6.03)	0.82 (5.15)
GMM for D. M.	— 0.038	0.70	0.141	— 1.396	— 1.086 (-1.8)	— 1.797 (-2.33)	— 0.994 (-1.2)	0.106 (0.072)	1.125 (2.73)	1.097 (2.56)	0.853 (2.6)	1.29 (1.42)
Central region												
GLS for S. M.	— 0.168	— 0.114	-0.08 0.011	—	— 1.872 (-11.8)	— 0.849 (-12.1)	— 0.848 (-11.7)	— 0.831 (-12.8)	1.04 (25.0)	0.963 (27.2)	0.928 (26.2)	0.842 (26.1)
LR GLS for D. M.	— 0.181	— 0.251	— 0.361	-0.4 0.548	— 1.009 (-3.52)	— 1.028 (-2.55)	— 0.646 (-2.30)	-0.61 (-2.00)	1.19 (6.43)	1.279 (5.11)	1.007 (6.32)	1.01 (5.90)
GMM for D. M.	0.195	0.871	0.401	0.548	— 1.408 (-4.1)	— 2.281 (-2.96)	— 1.328 (-2.74)	— 1.367 (-2.47)	1.213 (3.64)	1.41 (2.07)	0.927 (2.09)	0.819 (1.63)
Western region												
GLS for S. M.	— 0.269	— 0.178	— 0.218	-0.08 0.225	— 0.783 (-9.51)	— 0.689 (-8.30)	— 0.709 (-8.16)	— 0.744 (-9.42)	1.052 (26.0)	0.967 (27.9)	0.927 (26.6)	0.824 (24.9)
LR GLS for D. M.	— 0.343	— 0.205	— 0.295	— 0.225	— 1.003 (-3.07)	-1.36 (-2.59)	— 0.868 (-2.52)	— 0.881 (-2.39)	1.346 (7.51)	1.565 (5.54)	1.163 (7.30)	1.106 (6.11)
GMM for D. M.	— 0.599	— 0.131	0.161 0.366	—	— 0.879 (-1.28)	— 1.361 (-2.37)	— 1.606 (-3.19)	— 1.375 (-1.76)	1.478 (3.09)	1.492 (2.8)	1.445 (2.61)	1.741 (2.64)

Note: S. M. stands for static model and D. M. for dynamic model; LR GLS for D. M. means long-run solution of a dynamic model using GLS estimates. The dynamic model has the form:

$$\Delta \ln y_{3t} = f \left( \ln y_{3t-1}, \ln \left( \frac{P_2}{P_1} \right)_{t-1}, \ln \left( \frac{W}{P_1} \right)_{t-1}, \Delta \ln W_t, \Delta \ln y_{2t} \right)$$



TABLE 2  
DIAGNOSTIC TESTS ASSOCIATED WITH GMM ESTIMATION OF THE SERVICES DEMAND EQUATION

SAMPLES	1985-2001	1988-2001	1990-2001	1992-2001
Validity of overidentifying instrument tests (upper: full panel model; lower: regional model)				
$\chi^2$	359.7 [0.495] 167.4 [1.00]	252.4 [0.195] 173.4 [0.999]	159.5 [0.605] 12.41 [1.00]	72.59 [0.458] 12.06 [1.00]
Residual non-autocorrelation tests (upper: full panel model; lower: regional model)				
AR(1) [p value] N(0, 1)	-3.263 [0.001] -3.268 [0.001]	-2.846 [0.004] -2.824 [0.005]	-2.297 [0.022] -2.384 [0.017]	-2.562 [0.010] -2.98 [0.003]
AR(2) [p value] N(0, 1)	0.059 [0.953] 0.032 [0.975]	0.83 [0.407] 0.657 [0.511]	0.973 [0.331] 0.945 [0.345]	1.047 [0.295] 1.324 [0.186]

Note:  $\chi^2$  test statistics have different degrees of freedom mainly due to different sample sizes.

manufactured goods have been coming down. On the other hand, we see from Figure 3 that  $P_1$  has been rising fast in line with  $P_3$ . But its cross price elasticity  $\psi_1$  is found to be small and decreasing. If we look at the estimates of income elasticity, we fail to find enough evidence for the hypothesis  $\psi_4 \geq 1$ . The elasticity looks likely to be around unity. More interestingly and contrary to common expectation, the elasticity estimates decrease slightly as the economy develops, as shown from both the sub-sample and the regional results. The full sample estimates are larger than the sub-sample estimates. The estimates of the poorest region of the west are larger than those of the richest coastal region. A feasible explanation is that severely suppressed demand for services under the old economic regime was rapidly released by economic reforms in the PRC and that the long-run elasticity converged to unity once this transitory regime shift was over. The dynamic estimation results also confirm the earlier argument that commercialization of services is virtually transitory by nature. Two positive short-run factors are identified in this respect: an income effect represented by the income growth rate,  $\Delta \ln W_t$  (its parameter estimates are in the range of 0.11 ~ 0.19), and a between-sector effect represented by the growth rate of the manufacturing sector,  $\Delta \ln Y_{2t}$  (its parameter estimate is around 0.2). The latter is supportive of Oulton's model (2001) to some extent. In short, income is found to accelerate demand for services only in a short-run manner, whereas the price factors are found to be the main culprit for failing to curb the rising demand in the long run.

Let us now turn to the wage equation, as shown in Table 3. Much of the evidence here is in supportive of Baumol's third proposition. The parameter of the productivity of the services sector,  $\beta_3$  is insignificant throughout.  $W_3$  is dominantly determined by  $W_2$  in the long run. The estimates of  $\beta_2$  are fairly uniform across regions as well as over time with  $\hat{\beta}_2 \approx 1$ .<sup>8</sup> In addition, we find that the growth rate,  $\Delta \ln W_{2t}$ , exerts a strong and positive impact on  $W_3$  (its parameter estimates are in the range of 0.7~1.5). The finding tells us that there is a high degree of wage rigidity irrespective of labor productivity in the services sector. This is not very surprising since output prices of service products do not form a serious constraint to deter consumers.

<sup>8</sup> It is noticeable from Tables 3 and 4 that parameter estimates based on the dynamic specification are not very robust and the GMM lacks good instruments. This is due to the problem of evident nonstationarity in nominal wage series, as stated earlier.

**TABLE 3**  
**MAIN ESTIMATES FOR THE WAGE EQUATION (7')**

Sample	$\beta_1 = 1 - \beta_2$				$\beta_2$			
	1985-2001	1988-2001	1990-2001	1992-2001	1985-2001	1988-2001	1990-2001	1992-2001
Full panel								
GLS for S. M.	-0.117	-0.1408	-0.14	-0.0841	1.117 (144.0)	1.1408 (104.0)	1.140 (79.1)	1.0841 (54.5)
LR GLS for D. M.	-0.1272	-0.1476	-0.1272	-0.0071	1.1272 (94.7)	1.1476 (70.4)	1.1272 (53.42)	1.0071 (35.74)
GMM for D. M.	0.1906	0.1129	0.4797	-0.2566	0.8094 (3.85)	0.8871 (3.44)	0.5203 (1.31)	1.2566 (3.78)
Coastal region								
GLS for S. M.	0.386	0.141	0.226	0.149	1.117 (96.4)	1.1489 (69.6)	1.1573 (52.7)	1.1287 (36.3)
LR GLS for D. M.	-1.138	-1.694	-1.157	-0.416	1.1321 (63.44)	1.1626 (47.03)	1.1622 (35.11)	1.0315 (21.24)
GMM for D. M.	-0.405	-0.429	1.45	-1.398	1.405 (6.55)	1.429 (3.82)	-0.45 (-0.607)	2.398 (0.675)
Central region								
GLS for S. M.	-0.168	-0.114	-0.08	-0.011	1.1262 (78.6)	1.1371 (56.5)	1.1202 (42.8)	1.0333 (29.4)
LR GLS for D. M.	-0.181	-0.251	-0.361	-0.4	1.1282 (51.82)	1.1288 (38.12)	1.082 (28.95)	-0.61 (-2.00)
GMM for D. M.	0.6397	0.7056	1.042	0.5161	0.3603 (1.7)	0.2944 (1.49)	-0.042 (-0.145)	0.4839 (0.479)
Western region								
GLS for S. M.	-0.269	-0.178	-0.218	-0.08	1.1066 (72.2)	1.1311 (52.7)	1.1342 (40.3)	1.077 (28.6)
LR GLS for D. M.	-0.343	-0.205	-0.295	-0.225	1.1093 (47.5)	1.1347 (35.7)	1.1085 (27.74)	-0.881 (-2.39)
GMM for D. M.	-0.2204	-0.3609	-0.4705	-2.2298	1.2204 (6.68)	1.3609 (6.09)	1.4705 (7.33)	3.2298 (2.07)

Note: S. M. stands for static model and D. M. for dynamic model; LR GLS for D. M. means long-run solution of a dynamic model using GLS estimates. The dynamic model has the form:

$$\Delta W_{3t} = f \left( \ln \left( \frac{W_3}{W_1} \right)_{t-1}, \ln \left( \frac{W_2}{W_1} \right)_{t-1}, \Delta \ln W_{1t}, \Delta \ln W_{2t} \right)$$

The short-run variable  $\Delta \ln W_{1t}$  is significant in LR GLS estimation but not in GMM estimation.

TABLE 4  
DIAGNOSTIC TESTS ASSOCIATED WITH GMM ESTIMATION OF THE WAGE EQUATION

SAMPLES	1985-2001	1988-2001	1990-2001	1992-2001
Validity of overidentifying instrument tests (upper: full panel model; lower: regional model)				
$\chi^2$	302.4 [0.000] 302.3 [0.000]	231.1 [0.000] 193.1 [0.000]	139.5 [0.000] 89.68 [0.000]	10.93 [0.281] 4.838 [0.436]
Residual nonautocorrelation tests (upper: full panel model; lower: regional model)				
AR(1) [ <i>p</i> value] N(0, 1)	-2.687 [0.007] -2.588 [0.01]	-3.161 [0.002] -3.429 [0.001]	-3.004 [0.003] -2.692 [0.007]	-2.634 [0.008] -1.988 [0.047]
AR(2) [ <i>p</i> value] N(0, 1)	-0.1882 [0.851] -0.7407 [0.459]	-0.8854 [0.376] -1.937 [0.053]	0.4694 [0.639] -0.3663 [0.714]	-2.486 [0.013] -1.747 [0.081]

Note:  $\chi^2$  test statistics have different degrees of freedom mainly due to different sample sizes.

Finally, let us examine the result of the service labor demand equation (9'). Notice that constant-returns-to-scale is imposed in (9). This enables us to estimate the technological progress factor,  $\Lambda(t)$  without worrying about collinearity between  $\Lambda(t)$  and  $y_3$ . The imposition unfortunately makes it impossible to perform the second estimation method. Table 5 reports the rest two types of estimation results. During the GMM estimation, the significance of the negative feedback parameter,  $\theta_1$  for variable  $\ln(l_3 / y_3)_{t-1}$  can serve as an indirect verification of the constant-returns-to-scale assumption (this parameter takes the value around  $-0.17$  in the first two samples and around  $-0.37$  in the last two samples in the full-panel model estimation). As for the estimated  $\Lambda(t)$ , the GLS estimates and the GMM estimates deliver considerably different patterns, as shown from the two plots in Table 5. But both patterns show fairly slow and cyclical movement, confirming Baumol's proposition that technical progress in the services sector is too slow to help in improving labor productivity.<sup>9</sup> What contradicts Baumol's model is the labor cost variable, via the significance of  $\sigma$  albeit not very robust as some of the GMM estimates have fairly low significance levels, as shown in Table 5. Nevertheless, real wage rate exerts a small role in curbing labor input. Interestingly, its parameter estimates show a slight declining tendency both over time as well as from the more developed region to the less developed region. This seems to reflect a mixture of development effects. On one hand, economic development via marketization appears to gradually shape the services sector to become receptive to labor cost signals from the supply side; on the other, such a cost constraint appears to be diluted by the rapidly growing need for service products from the demand side.

<sup>9</sup> It is shown in some literature that technical progress has recently accelerated in the services sector with the rapid expansion of the "new economy", i.e., the information, communication, and computing industries (e.g., see Temple 2002). However, it is not yet clear that the progress will make a net contribution to labor cost reduction, since the new economy normally enjoys relatively high wage rates.

**TABLE 5**  
**MAIN ESTIMATES FOR LABOR DEMAND OF EQUATION (9')**

Sample	$\sigma$ (t value)				$\Lambda(t)$ (Top: GLS; Bottom: GMM)	
	1985-2001	1988-2001	1990-2001	1992-2001		
Full panel						
GLS for S. M.	0.5744 (12.0)	0.4665 (8.95)	0.3528 (6.19)	0.2642 (4.45)		
GMM for D. M.	0.4486 (1.98)	0.519 (1.59)	0.2097 (1.33)	0.0692 (0.645)		
Coastal region						
GLS for S. M.	0.645 (13.7)	0.5569 (10.6)	0.4659 (7.71)	0.402 (5.85)		
GMM for D. M.	0.7746 (1.63)	1.1331 (1.64)	0.7317 (1.15)	0.1548 (0.388)		
Central region						
GLS for S. M.	0.493 (8.36)	0.4152 (6.31)	0.3582 (4.7)	0.3735 (4.33)		
GMM for D. M.	0.2692 (0.359)	0.7588 (1.88)	0.5126 (1.78)	-0.056 (-0.109)		
Western region						
GLS for S. M.	0.4084 (7.96)	0.3336 (6.18)	0.2629 (4.52)	0.2177 (3.61)		
GMM for D. M.	0.2873 (1.82)	0.3275 (1.31)	0.1585 (0.748)	0.0406 (0.24)		

Note: S. M. stands for static model and D. M. for dynamic model. The dynamic model has the form:

$$\Delta \ln l_{3t} = f \left( \ln \left( \frac{l_3}{y_3} \right)_{t-1}, \ln w_{3t-1}, \ln \Lambda_t \right)$$

**TABLE 6**  
**DIAGNOSTIC TESTS ASSOCIATED WITH GMM ESTIMATION OF THE LABOR DEMAND EQUATION**

SAMPLES	1985-2001	1988-2001	1990-2001	1992-2001
Validity of overidentifying instrument tests (upper: full panel model; lower: regional model)				
$\chi^2$	212.1 [0.409]	169.6 [0.011]	113.7 [0.034]	76.58 [0.023]
	205.3 [0.46]	152.7 [0.053]	102.9 [0.079]	72.66 [0.02]
Residual nonautocorrelation tests (upper: full panel model; lower: regional model)				
AR(1) [ <i>p</i> value]	-2.549 [0.011]	-2.256 [0.024]	-2.527 [0.012]	-2.633 [0.008]
N(0, 1)	-2.733 [0.006]	-2.532 [0.011]	-2.652 [0.008]	-2.902 [0.004]
AR(2) [ <i>p</i> value]	1.642 [0.101]	1.398 [0.162]	1.57 [0.116]	1.648 [0.099]
N(0, 1)	1.807 [0.071]	1.549 [0.121]	1.8 [0.072]	1.809 [0.071]

Note:  $\chi^2$  test statistics have different degrees of freedom mainly due to different sample sizes.

## V. REFLECTIONS AND SUMMARY

The PRC is still at the very beginning of tertiarization. A services economy is yet to occur with respect to rapidly rising income, commercialization of services, abundant excess labor supply, and adequately developed capacity in both manufacturing and agricultural sectors at present in comparison to many service industries.

The shift of labor shares from agriculture into services has so far kept the services sector in positive contribution to the overall labor productivity and growth of the Chinese economy. But plenty of evidence is found in this investigation to show that pricing in the services sector, in terms of both output and labor input, already poses significant risk of cost disease to the whole economy. The rapidly growing economy has stimulated enough demand for services to disable the own price effect to keep the demand in check. This encourages nominal wage rigidity and has somehow allowed the wage level of the services sector to outpace the most productive sector of manufacturing. As a result, real wage cost forms too weak a constraint for the Chinese service producers in optimizing their production.

The paper's findings carry important policy implications. While it is a viable strategy to encourage development of the services sector and a service-led growth path in future, the strategy is unlikely to materialize without more carefully designed policies in place. The positive contribution of the services sector to overall growth may not be sustainable by itself. The net labor productivity gain will disappear as soon as the shift of labor shares from the agricultural sector to services is replaced by the shift from the secondary sector to services, as is expected normally of substantial tertiarization in a developed economy. It is thus imperative to introduce policies to induce the services sector to be economically more efficient before it takes off in surpassing the secondary sector.

Our findings suggest that the key guidance of such policy design should be encouragement of competition and market efficiency of the service industries. A recent five-country study by Van Ark et al. (1999) has verified that deregulation of markets plays an important role in promoting productivity in services. Since there are not enough pricing signals to check demand for services and for service labor, policies are particularly wanted in the realm of wage and employment determination. Specifically, these policies should aim to remove those institutional arrangements in protection of nominal wage rigidity and to stimulate real wage cost response from service producers. Considering the abundant labor supply in the PRC, there is no reason for service producers not to be receptive to such policies. In reality however, design and implementation of such policies can be extremely challenging politically, as a sizeable and leading part of the services sector is still dominantly state-owned, such as banking and finance, education and culture, social services, telecommunication, health care, and government administration.

## APPENDIX

The data series are sourced from various issues of the *Statistical Yearbook of China*, *Provincial Statistical Yearbook* published by the National Bureau of Statistics, and the *Comprehensive Statistical Data and Materials on 50 Years of New China* (National Bureau of Statistics 1999).

### Variable definition:

$Y_{ij}$ : value-added output of sector  $i$  in province  $j$ , adjusted to constant price by  $P_{ij}$   
 $i = 1, 2, 3 \quad j = 1, \dots, 30$

$Y_j$ : constant price GDP of province  $j$

$P_{ij}$ : output price indices of sector  $i$  in province  $j$  (the indices are derived from indices of annual GDP growth data and nominal GDP data by sector)

$L_{ij}$ : employment of sector  $i$  in province  $j$

$W_{ij}$ : average wage per worker in sector  $i$  in province  $j$  from the table of Average Wage of Staff and Workers by Sector ( $W_1$  uses the category of farming, forestry animal husbandry and fishery;  $W_2$  uses the category of manufacturing;  $W_3$  is the employment weighted average of nine categories: transport and telecommunication, trade and catering services, banking and insurance, real estate trade, social services, health care, education and culture, scientific research, government agencies)

### Abbreviation of provinces by region:

Coastal region		Central region		Western region	
BJ	Beijing	SX	Shanxi	SC	Sichuan
TJ	Tianjin	NM	Inner Mongolia	GZ	Guizhou
HB	Hebei	JL	Jilin	YN	Yunnan
LN	Liaoning	HLJ	Heilongjiang	XZ	Tibet
SH	Shanghai	AH	Anhui	SHX	Shaanxi
JS	Jiangsu	JX	Jiangxi	GS	Gansu
ZJ	Zhejiang	HN	Henan	QH	Qinghai
FJ	Fujian	HUB	Hubei	NX	Ningxia
SD	Shandong	HUN	Hunan	XJ	Xinjiang
GD	Guangdong	GX	Guangxi		
HAN	Hainan				

## REFERENCES

- Arellano, M., and O. Bover, 1995. "Another Look at the Instrumental Variables Estimation of Error-components Models." *Journal of Econometrics* 68:29-51.
- Arellano, M., and B. Honoré, 2000. Panel Data Model: Some Recent Developments. CEMFI Working Paper No. 0016, Centre of Monetary and Financial Studies, the Bank of Spain.
- Baumol, W. J., 1967. "Macroeconomics of Unbalanced Growth: The Anatomy of Urban Crisis." *American Economic Review* 57:415-26.
- Baumol, W. J., S. A. Batey Blackman, and E. N. Wolff, 1985. "Unbalanced Growth Revisited: Asymptotic Stagnancy and New Evidence." *American Economic Review* 75:806-17.
- Berman, E., J. Bound, and Z. Griliches, 1994. "Changes in the Demand for Skilled Labor within US Manufacturing: Evidence from the Annual Survey of Manufacturers." *The Quarterly Journal of Economics* 109:367-97.
- Blundell, R., and S. Bond, 1998. "Initial Conditions and Moment Restrictions in Dynamic Panel Data Models." *Journal of Econometrics* 87:115-43.
- Curtis, D. C. A., and K. S. R. Murthy, 1998. "Economic Growth and Restructuring: A Test of Unbalanced Growth Models: 1977-1992." *Applied Economic Letters* 5:777-80.
- Doornik, J. A., and D. F. Hendry, 2001. *Econometric Modelling Using PcGive: Volume III*. London: Timberlake Consultants Ltd.
- Engle, R. F., and C. W. J. Granger, 1987. "Cointegration and Error Correction: Representation, Estimation and Testing." *Econometrica* 55:251-76.
- Hamermesh, D. S., 1986. "The Demand for Labor in the Long Run." In O. Ashenfelter and R. Layard, eds., *Handbook of Labor Economics*. North Holland: Elsevier Science B.V.
- Hendry, D. F., 1995. *Dynamic Econometrics*. Oxford: Oxford University Press.
- Illeris, S., 1996. *The Service Economy: A Geographical Approach*. Chichester: John Wiley & Sons Ltd.
- Li, T., 2001. "The Tenth Five-Year Plan and Growth of Services in China." *Proceedings of the World Services Congress 2001*. Available: <http://www.chamber.org.hk/wsc/>.
- Mattoo, A., R. Rathindran, and A. Subramanian, 2001. Measuring Services Trade Liberalization and Its impact on Economic Growth: An Illustration. Policy Research Working Papers No. 2655, The World Bank, Washington, D.C.
- Nickell, S. J., 1986. "Dynamic Models of Labor Demand." In O. Ashenfelter and R. Layard, eds., *Handbook of Labor Economics*. North Holland: Elsevier Science B.V.
- Nordhaus, W. D., 2001. Alternative Methods for Measuring Productivity Growth. NBER Working Paper No. 8095, National Bureau of Economic Research, Massachusetts.
- , 2002. "Productivity Growth and the New Economy." *Brookings Papers on Economic Activity* 2:2-2.
- Oulton, N., 2001. "Must the Growth Rate Decline? Baumol's Unbalanced Growth Revisited." *Oxford Economic Papers* 53:605-27.
- Phillips, P. C. B., and H. R. Moon, 2000. "Nonstationary Panel Data Analysis: An Overview of Some Recent Developments." *Econometric Reviews* 19:263-86.
- Riddle, D. I., 1986. *Service-Led Growth: the Role of the Services sector in World Development*. New York: Praeger.
- Sundrum, R. M., 1990. *Economic Growth in Theory and Practice*. Houndmills: MacMillan.
- Temple, J., 2002. The Assessment: The New Economy. *Oxford Review of Economic Policy* 18:241-64.
- Triplet, J. E., and B. P. Bosworth, 2001. Productivity in the Services Sector. In R. M. Stern, ed., *Services in the International Economy*. Ann Arbor: University of Michigan Press.
- Van Ark, B., E. Monnikhof, and N. Mulder, 1999. Productivity in Services: An International Comparative Perspective." *Canadian Journal of Economics* 32:471-99.



Wolff, E. N., 1999. "The Productivity Paradox: Evidence from Indirect Indicators of Services Sector Productivity Growth." *Canadian Journal of Economics* 32:281-307.

Yang, D. T., and H. Zhou, 1999. "Rural-Urban Disparity and Sectoral Labor Allocation in China." *Journal of Development Studies* 35:105-33.

## PUBLICATIONS FROM THE ECONOMICS AND RESEARCH DEPARTMENT

### ERD WORKING PAPER SERIES (WPS)

(Published in-house; Available through ADB Office of External Relations; Free of Charge)

- |   |   |
|---|---|
| <p>No. 1 Capitalizing on Globalization<br/>—<i>Barry Eichengreen, January 2002</i></p> <p>No. 2 Policy-based Lending and Poverty Reduction: An Overview of Processes, Assessment and Options<br/>—<i>Richard Bolt and Manabu Fujimura, January 2002</i></p> <p>No. 3 The Automotive Supply Chain: Global Trends and Asian Perspectives<br/>—<i>Francisco Veloso and Rajiv Kumar, January 2002</i></p> <p>No. 4 International Competitiveness of Asian Firms: An Analytical Framework<br/>—<i>Rajiv Kumar and Doren Chadee, February 2002</i></p> <p>No. 5 The International Competitiveness of Asian Economies in the Apparel Commodity Chain<br/>—<i>Gary Gereffi, February 2002</i></p> <p>No. 6 Monetary and Financial Cooperation in East Asia—The Chiang Mai Initiative and Beyond<br/>—<i>Pradumna B. Rana, February 2002</i></p> <p>No. 7 Probing Beneath Cross-national Averages: Poverty, Inequality, and Growth in the Philippines<br/>—<i>Arsenio M. Balisacan and Ernesto M. Pernia, March 2002</i></p> <p>No. 8 Poverty, Growth, and Inequality in Thailand<br/>—<i>Anil B. Deolalikar, April 2002</i></p> <p>No. 9 Microfinance in Northeast Thailand: Who Benefits and How Much?<br/>—<i>Brett E. Coleman, April 2002</i></p> <p>No. 10 Poverty Reduction and the Role of Institutions in Developing Asia<br/>—<i>Anil B. Deolalikar, Alex B. Brillantes, Jr., Raghav Gaiha, Ernesto M. Pernia, Mary Racelis with the assistance of Marita Concepcion Castro-Guevara, Liza L. Lim, Pilipinas F. Quising, May 2002</i></p> <p>No. 11 The European Social Model: Lessons for Developing Countries<br/>—<i>Assar Lindbeck, May 2002</i></p> <p>No. 12 Costs and Benefits of a Common Currency for ASEAN<br/>—<i>Srinivasa Madhur, May 2002</i></p> <p>No. 13 Monetary Cooperation in East Asia: A Survey<br/>—<i>Raul Fabella, May 2002</i></p> <p>No. 14 Toward A Political Economy Approach to Policy-based Lending<br/>—<i>George Abonyi, May 2002</i></p> <p>No. 15 A Framework for Establishing Priorities in a Country Poverty Reduction Strategy<br/>—<i>Ron Duncan and Steve Pollard, June 2002</i></p> | <p>No. 16 The Role of Infrastructure in Land-use Dynamics and Rice Production in Viet Nam's Mekong River Delta<br/>—<i>Christopher Edmonds, July 2002</i></p> <p>No. 17 Effect of Decentralization Strategy on Macroeconomic Stability in Thailand<br/>—<i>Kanokpan Lao-Araya, August 2002</i></p> <p>No. 18 Poverty and Patterns of Growth<br/>—<i>Rana Hasan and M. G. Quibria, August 2002</i></p> <p>No. 19 Why are Some Countries Richer than Others? A Reassessment of Mankiw-Romer-Weil's Test of the Neoclassical Growth Model<br/>—<i>Jesus Felipe and John McCombie, August 2002</i></p> <p>No. 20 Modernization and Son Preference in People's Republic of China<br/>—<i>Robin Burgess and Juzhong Zhuang, September 2002</i></p> <p>No. 21 The Doha Agenda and Development: A View from the Uruguay Round<br/>—<i>J. Michael Finger, September 2002</i></p> <p>No. 22 Conceptual Issues in the Role of Education Decentralization in Promoting Effective Schooling in Asian Developing Countries<br/>—<i>Jere R. Behrman, Anil B. Deolalikar, and Lee-Ying Son, September 2002</i></p> <p>No. 23 Promoting Effective Schooling through Education Decentralization in Bangladesh, Indonesia, and Philippines<br/>—<i>Jere R. Behrman, Anil B. Deolalikar, and Lee-Ying Son, September 2002</i></p> <p>No. 24 Financial Opening under the WTO Agreement in Selected Asian Countries: Progress and Issues<br/>—<i>Yun-Hwan Kim, September 2002</i></p> <p>No. 25 Revisiting Growth and Poverty Reduction in Indonesia: What Do Subnational Data Show?<br/>—<i>Arsenio M. Balisacan, Ernesto M. Pernia, and Abuzar Asra, October 2002</i></p> <p>No. 26 Causes of the 1997 Asian Financial Crisis: What Can an Early Warning System Model Tell Us?<br/>—<i>Juzhong Zhuang and J. Malcolm Dowling, October 2002</i></p> <p>No. 27 Digital Divide: Determinants and Policies with Special Reference to Asia<br/>—<i>M. G. Quibria, Shamsun N. Ahmed, Ted Tschang, and Mari-Len Reyes-Macasaquit, October 2002</i></p> <p>No. 28 Regional Cooperation in Asia: Long-term Progress, Recent Retrogression, and the Way Forward<br/>—<i>Ramgopal Agarwala and Brahm Prakash, October 2002</i></p> |
|---|---|

- No. 29 How can Cambodia, Lao PDR, Myanmar, and Viet Nam Cope with Revenue Lost Due to AFTA Tariff Reductions?  
—*Kanokpan Lao-Araya*  
November 2002
- No. 30 Asian Regionalism and Its Effects on Trade in the 1980s and 1990s  
—*Ramon Clarete, Christopher Edmonds, and Jessica Seddon Wallack*  
November 2002
- No. 31 New Economy and the Effects of Industrial Structures on International Equity Market Correlations  
—*Cyn-Young Park and Jaejoon Woo*  
December 2002
- No. 32 Leading Indicators of Business Cycles in Malaysia and the Philippines  
—*Wenda Zhang and Juzhong Zhuang*  
December 2002
- No. 33 Technological Spillovers from Foreign Direct Investment—A Survey  
—*Emma Xiaoqin Fan*  
December 2002
- No. 34 Economic Openness and Regional Development in the Philippines  
—*Ernesto M. Pernia and Pilipinas F. Quising*  
January 2003
- No. 35 Bond Market Development in East Asia: Issues and Challenges  
—*Raul Fabella and Srinivasa Madhur*  
January 2003
- No. 36 Environment Statistics in Central Asia: Progress and Prospects  
—*Robert Ballance and Bishnu D. Pant*  
March 2003
- No. 37 Electricity Demand in the People's Republic of China: Investment Requirement and Environmental Impact  
—*Bo Q. Lin*  
March 2003
- No. 38 Foreign Direct Investment in Developing Asia: Trends, Effects, and Likely Issues for the Forthcoming TWO Negotiations  
—*Douglas H. Brooks, Emma Xiaoqin Fan, and Lea R. Sumulong*  
April 2003
- No. 39 The Political Economy of Good Governance for Poverty Alleviation Policies  
—*Narayan Lakshman*  
April 2003
- No. 40 The Puzzle of Social Capital  
A Critical Review  
—*M. G. Quibria*  
May 2003
- No. 41 Industrial Structure, Technical Change, and the Role of Government in Development of the Electronics and Information Industry in Taipei, China  
—*Yeo Lin*  
May 2003
- No. 42 Economic Growth and Poverty Reduction in Viet Nam  
—*Arsenio M. Balisacan, Ernesto M. Pernia, and Gemma Esther B. Estrada*  
June 2003
- No. 43 Why Has Income Inequality in Thailand Increased? An Analysis Using 1975-1998 Surveys  
—*Taizo Motonishi*  
June 2003
- No. 44 Welfare Impacts of Electricity Generation Sector Reform in the Philippines  
—*Natsuko Toba*  
June 2003
- No. 45 A Review of Commitment Savings Products in Developing Countries  
—*Nava Ashraf, Nathalie Gons, Dean S. Karlan, and Wesley Yin*  
July 2003
- No. 46 Local Government Finance, Private Resources, and Local Credit Markets in Asia  
—*Roberto de Vera and Yun-Hwan Kim*  
October 2003
- No. 47 Excess Investment and Efficiency Loss During Reforms: The Case of Provincial-level Fixed-Asset Investment in People's Republic of China  
—*Duo Qin and Haiyan Song*  
October 2003
- No. 48 Is Export-led Growth Passe? Implications for Developing Asia  
—*Jesus Felipe*  
December 2003
- No. 49 Changing Bank Lending Behavior and Corporate Financing in Asia—Some Research Issues  
—*Emma Xiaoqin Fan and Akiko Terada-Hagiwara*  
December 2003
- No. 50 Is the Rising Services Sector in the People's Republic of China Leading to Cost Disease?  
—*Duo Qin*  
April 2004

## ERD TECHNICAL NOTE SERIES (TNS)

(Published in-house; Available through ADB Office of External Relations; Free of Charge)

- No. 1 Contingency Calculations for Environmental Impacts with Unknown Monetary Values  
—*David Dole*  
February 2002
- No. 2 Integrating Risk into ADB's Economic Analysis of Projects  
—*Nigel Rayner, Anneli Lagman-Martin, and Keith Ward*  
June 2002
- No. 3 Measuring Willingness to Pay for Electricity  
—*Peter Choynowski*  
July 2002
- No. 4 Economic Issues in the Design and Analysis of a Wastewater Treatment Project  
—*David Dole*  
July 2002
- No. 5 An Analysis and Case Study of the Role of Environmental Economics at the Asian Development Bank  
—*David Dole and Piya Abeygunawardena*  
September 2002

- No. 6 Economic Analysis of Health Projects: A Case Study in Cambodia  
—*Erik Bloom and Peter Choynowski*  
May 2003
- No. 7 Strengthening the Economic Analysis of Natural Resource Management Projects  
—*Keith Ward*  
September 2003
- No. 8 Testing Savings Product Innovations Using an Experimental Methodology  
—*Nava Ashraf, Dean S. Karlan, and Wesley Yin*  
November 2003
- No. 9 Setting User Charges for Public Services: Policies and Practice at the Asian Development Bank  
—*David Dole*  
December 2003

## ERD POLICY BRIEF SERIES (PBS)

(Published in-house; Available through ADB Office of External Relations; Free of charge)

- No. 1 Is Growth Good Enough for the Poor?  
—*Ernesto M. Pernia*, October 2001
- No. 2 India's Economic Reforms  
What Has Been Accomplished?  
What Remains to Be Done?  
—*Arvind Panagariya*, November 2001
- No. 3 Unequal Benefits of Growth in Viet Nam  
—*Indu Bhushan, Erik Bloom, and Nguyen Minh Thang*, January 2002
- No. 4 Is Volatility Built into Today's World Economy?  
—*J. Malcolm Dowling and J.P. Verbiest*, February 2002
- No. 5 What Else Besides Growth Matters to Poverty Reduction? Philippines  
—*Arsenio M. Balisacan and Ernesto M. Pernia*, February 2002
- No. 6 Achieving the Twin Objectives of Efficiency and Equity: Contracting Health Services in Cambodia  
—*Indu Bhushan, Sheryl Keller, and Brad Schwartz*, March 2002
- No. 7 Causes of the 1997 Asian Financial Crisis: What Can an Early Warning System Model Tell Us?  
—*Juzhong Zhuang and Malcolm Dowling*, June 2002
- No. 8 The Role of Preferential Trading Arrangements in Asia  
—*Christopher Edmonds and Jean-Pierre Verbiest*, July 2002
- No. 9 The Doha Round: A Development Perspective  
—*Jean-Pierre Verbiest, Jeffrey Liang, and Lea Sumulong*, July 2002
- No. 10 Is Economic Openness Good for Regional Development and Poverty Reduction? The Philippines  
—*E. M. Pernia and P. F. Quising*, October 2002
- No. 11 Implications of a US Dollar Depreciation for Asian Developing Countries  
—*Emma Fan*, July 2002
- No. 12 Dangers of Deflation  
—*D. Brooks and P. F. Quising*, December 2002
- No. 13 Infrastructure and Poverty Reduction—  
What is the Connection?  
—*I. Ali and E. Pernia*  
January 2003
- No. 14 Infrastructure and Poverty Reduction—  
Making Markets Work for the Poor  
—*Xianbin Yao*  
May 2003
- No. 15 SARS: Economic Impacts and Implications  
—*Emma Xiaoqin Fan*  
May 2003
- No. 16 Emerging Tax Issues: Implications of Globalization and Technology  
—*Kanokpan Lao Araya*  
May 2003
- No. 17 Pro-Poor Growth: What is It and Why is It Important?  
—*Ernesto M. Pernia*  
May 2003
- No. 18 Public-Private Partnership for Competitiveness  
—*Jesus Felipe*  
June 2003
- No. 19 Reviving Asian Economic Growth Requires Further Reforms  
—*Ifzal Ali*  
June 2003
- No. 20 The Millennium Development Goals and Poverty: Are We Counting the World's Poor Right?  
—*M. G. Quibria*  
July 2003
- No. 21 Trade and Poverty: What are the Connections?  
—*Douglas H. Brooks*  
July 2003
- No. 22 Adapting Education to the Global Economy  
—*Olivier Dupriez*  
September 2003
- No. 23 Avian Flu: An Economic Assessment for Selected Developing Countries in Asia  
—*Jean-Pierre Verbiest and Charissa Castillo*  
March 2004
- No. 25 Purchasing Power Parities and the International Comparison Program in a Globalized World  
—*Bishnu Pant*  
March 2004

## SERIALS

(Co-published with Oxford University Press; Available commercially through Oxford University Press Offices, Associated Companies, and Agents)

1. Asian Development Outlook (ADO; annual)  
\$36.00 (paperback)
2. Key Indicators of Developing Asian and Pacific Countries (KI; annual)  
\$35.00 (paperback)

## JOURNAL

(Published in-house; Available commercially through ADB Office of External Relations)

1. Asian Development Review (ADR; semiannual)  
\$5.00 per issue; \$8.00 per year (2 issues)

## MONOGRAPH SERIES

(Published in-house; Available through ADB Office of External Relations; Free of charge)

### EDRC REPORT SERIES (ER)

- |        |   |        |   |
|--------|---|--------|---|
| No. 1  | ASEAN and the Asian Development Bank<br>— <i>Seiji Naya, April 1982</i>   | No. 14 | Energy and Structural Change in the Asia-Pacific Region, Summary of the Thirteenth Pacific Trade and Development Conference<br>— <i>Seiji Naya, March 1983</i>      |
| No. 2  | Development Issues for the Developing East and Southeast Asian Countries and International Cooperation<br>— <i>Seiji Naya and Graham Abbott, April 1982</i>       | No. 15 | A Survey of Empirical Studies on Demand for Electricity with Special Emphasis on Price Elasticity of Demand<br>— <i>Wisarn Pupphavesa, June 1983</i>                |
| No. 3  | Aid, Savings, and Growth in the Asian Region<br>— <i>J. Malcolm Dowling and Ulrich Hiemenz, April 1982</i>  | No. 16 | Determinants of Paddy Production in Indonesia: 1972-1981—A Simultaneous Equation Model Approach<br>— <i>T.K. Jayaraman, June 1983</i>                               |
| No. 4  | Development-oriented Foreign Investment and the Role of ADB<br>— <i>Kiyoshi Kojima, April 1982</i>  | No. 17 | The Philippine Economy: Economic Forecasts for 1983 and 1984<br>— <i>J.M. Dowling, E. Go, and C.N. Castillo, June 1983</i>  |
| No. 5  | The Multilateral Development Banks and the International Economy's Missing Public Sector<br>— <i>John Lewis, June 1982</i>  | No. 18 | Economic Forecast for Indonesia<br>— <i>J.M. Dowling, H.Y. Kim, Y.K. Wang, and C.N. Castillo, June 1983</i>   |
| No. 6  | Notes on External Debt of DMCs<br>— <i>Evelyn Go, July 1982</i>   | No. 19 | Relative External Debt Situation of Asian Developing Countries: An Application of Ranking Method<br>— <i>Jungsoo Lee, June 1983</i>                                 |
| No. 7  | Grant Element in Bank Loans<br>— <i>Dal Hyun Kim, July 1982</i>   | No. 20 | New Evidence on Yields, Fertilizer Application, and Prices in Asian Rice Production<br>— <i>William James and Teresita Ramirez, July 1983</i>                       |
| No. 8  | Shadow Exchange Rates and Standard Conversion Factors in Project Evaluation<br>— <i>Peter Warr, September 1982</i>  | No. 21 | Inflationary Effects of Exchange Rate Changes in Nine Asian LDCs<br>— <i>Pradumna B. Rana and J. Malcolm Dowling, Jr., December 1983</i>                            |
| No. 9  | Small and Medium-Scale Manufacturing Establishments in ASEAN Countries: Perspectives and Policy Issues<br>— <i>Mathias Bruch and Ulrich Hiemenz, January 1983</i> | No. 22 | Effects of External Shocks on the Balance of Payments, Policy Responses, and Debt Problems of Asian Developing Countries<br>— <i>Seiji Naya, December 1983</i>      |
| No. 10 | A Note on the Third Ministerial Meeting of GATT<br>— <i>Jungsoo Lee, January 1983</i>   | No. 23 | Changing Trade Patterns and Policy Issues: The Prospects for East and Southeast Asian Developing Countries<br>— <i>Seiji Naya and Ulrich Hiemenz, February 1984</i> |
| No. 11 | Macroeconomic Forecasts for the Republic of China, Hong Kong, and Republic of Korea<br>— <i>J.M. Dowling, January 1983</i>  |        |   |
| No. 12 | ASEAN: Economic Situation and Prospects<br>— <i>Seiji Naya, March 1983</i>  |        |   |
| No. 13 | The Future Prospects for the Developing Countries of Asia<br>— <i>Seiji Naya, March 1983</i>  |        |   |

- No. 24 Small-Scale Industries in Asian Economic Development: Problems and Prospects  
—*Seiji Naya, February 1984*
- No. 25 A Study on the External Debt Indicators Applying Logit Analysis  
—*Jungsoo Lee and Clarita Barretto, February 1984*
- No. 26 Alternatives to Institutional Credit Programs in the Agricultural Sector of Low-Income Countries  
—*Jennifer Sour, March 1984*
- No. 27 Economic Scene in Asia and Its Special Features  
—*Kedar N. Kohli, November 1984*
- No. 28 The Effect of Terms of Trade Changes on the Balance of Payments and Real National Income of Asian Developing Countries  
—*Jungsoo Lee and Lutgarda Labios, January 1985*
- No. 29 Cause and Effect in the World Sugar Market: Some Empirical Findings 1951-1982  
—*Yoshihiro Iwasaki, February 1985*
- No. 30 Sources of Balance of Payments Problem in the 1970s: The Asian Experience  
—*Pradumna Rana, February 1985*
- No. 31 India's Manufactured Exports: An Analysis of Supply Sectors  
—*Ifzal Ali, February 1985*
- No. 32 Meeting Basic Human Needs in Asian Developing Countries  
—*Jungsoo Lee and Emma Banaria, March 1985*
- No. 33 The Impact of Foreign Capital Inflow on Investment and Economic Growth in Developing Asia  
—*Evelyn Go, May 1985*
- No. 34 The Climate for Energy Development in the Pacific and Asian Region: Priorities and Perspectives  
—*V.V. Desai, April 1986*
- No. 35 Impact of Appreciation of the Yen on Developing Member Countries of the Bank  
—*Jungsoo Lee, Pradumna Rana, and Ifzal Ali, May 1986*
- No. 36 Smuggling and Domestic Economic Policies in Developing Countries  
—*A.H.M.N. Chowdhury, October 1986*
- No. 37 Public Investment Criteria: Economic Internal Rate of Return and Equalizing Discount Rate  
—*Ifzal Ali, November 1986*
- No. 38 Review of the Theory of Neoclassical Political Economy: An Application to Trade Policies  
—*M.G. Quibria, December 1986*
- No. 39 Factors Influencing the Choice of Location: Local and Foreign Firms in the Philippines  
—*E.M. Pernia and A.N. Herrin, February 1987*
- No. 40 A Demographic Perspective on Developing Asia and Its Relevance to the Bank  
—*E.M. Pernia, May 1987*
- No. 41 Emerging Issues in Asia and Social Cost Benefit Analysis  
—*I. Ali, September 1988*
- No. 42 Shifting Revealed Comparative Advantage: Experiences of Asian and Pacific Developing Countries  
—*P.B. Rana, November 1988*
- No. 43 Agricultural Price Policy in Asia: Issues and Areas of Reforms  
—*I. Ali, November 1988*
- No. 44 Service Trade and Asian Developing Economies  
—*M.G. Quibria, October 1989*
- No. 45 A Review of the Economic Analysis of Power Projects in Asia and Identification of Areas of Improvement  
—*I. Ali, November 1989*
- No. 46 Growth Perspective and Challenges for Asia: Areas for Policy Review and Research  
—*I. Ali, November 1989*
- No. 47 An Approach to Estimating the Poverty Alleviation Impact of an Agricultural Project  
—*I. Ali, January 1990*
- No. 48 Economic Growth Performance of Indonesia, the Philippines, and Thailand: The Human Resource Dimension  
—*E.M. Pernia, January 1990*
- No. 49 Foreign Exchange and Fiscal Impact of a Project: A Methodological Framework for Estimation  
—*I. Ali, February 1990*
- No. 50 Public Investment Criteria: Financial and Economic Internal Rates of Return  
—*I. Ali, April 1990*
- No. 51 Evaluation of Water Supply Projects: An Economic Framework  
—*Arlene M. Tadle, June 1990*
- No. 52 Interrelationship Between Shadow Prices, Project Investment, and Policy Reforms: An Analytical Framework  
—*I. Ali, November 1990*
- No. 53 Issues in Assessing the Impact of Project and Sector Adjustment Lending  
—*I. Ali, December 1990*
- No. 54 Some Aspects of Urbanization and the Environment in Southeast Asia  
—*Ernesto M. Pernia, January 1991*
- No. 55 Financial Sector and Economic Development: A Survey  
—*Jungsoo Lee, September 1991*
- No. 56 A Framework for Justifying Bank-Assisted Education Projects in Asia: A Review of the Socioeconomic Analysis and Identification of Areas of Improvement  
—*Etienne Van De Walle, February 1992*
- No. 57 Medium-term Growth-Stabilization Relationship in Asian Developing Countries and Some Policy Considerations  
—*Yun-Hwan Kim, February 1993*
- No. 58 Urbanization, Population Distribution, and Economic Development in Asia  
—*Ernesto M. Pernia, February 1993*
- No. 59 The Need for Fiscal Consolidation in Nepal: The Results of a Simulation  
—*Filippo di Mauro and Ronald Antonio Butiong, July 1993*
- No. 60 A Computable General Equilibrium Model of Nepal  
—*Timothy Buehrer and Filippo di Mauro, October 1993*
- No. 61 The Role of Government in Export Expansion in the Republic of Korea: A Revisit  
—*Yun-Hwan Kim, February 1994*
- No. 62 Rural Reforms, Structural Change, and Agricultural Growth in the People's Republic of China  
—*Bo Lin, August 1994*
- No. 63 Incentives and Regulation for Pollution Abatement with an Application to Waste Water Treatment  
—*Sudipto Mundle, U. Shankar, and Shekhar Mehta, October 1995*
- No. 64 Saving Transitions in Southeast Asia  
—*Frank Harrigan, February 1996*
- No. 65 Total Factor Productivity Growth in East Asia: A Critical Survey  
—*Jesus Felipe, September 1997*
- No. 66 Foreign Direct Investment in Pakistan: Policy Issues and Operational Implications  
—*Ashfaque H. Khan and Yun-Hwan Kim, July 1999*
- No. 67 Fiscal Policy, Income Distribution and Growth  
—*Sailesh K. Jha, November 1999*

## ECONOMIC STAFF PAPERS (ES)

- |   |  |
|---|--|
| <p>No. 1 International Reserves: Factors Determining Needs and Adequacy<br/>—<i>Evelyn Go, May 1981</i></p> <p>No. 2 Domestic Savings in Selected Developing Asian Countries<br/>—<i>Basil Moore, assisted by A.H.M. Nuruddin Chowdhury, September 1981</i></p> <p>No. 3 Changes in Consumption, Imports and Exports of Oil Since 1973: A Preliminary Survey of the Developing Member Countries of the Asian Development Bank<br/>—<i>Dal Hyun Kim and Graham Abbott, September 1981</i></p> <p>No. 4 By-Passed Areas, Regional Inequalities, and Development Policies in Selected Southeast Asian Countries<br/>—<i>William James, October 1981</i></p> <p>No. 5 Asian Agriculture and Economic Development<br/>—<i>William James, March 1982</i></p> <p>No. 6 Inflation in Developing Member Countries: An Analysis of Recent Trends<br/>—<i>A.H.M. Nuruddin Chowdhury and J. Malcolm Dowling, March 1982</i></p> <p>No. 7 Industrial Growth and Employment in Developing Asian Countries: Issues and Perspectives for the Coming Decade<br/>—<i>Ulrich Hiemenz, March 1982</i></p> <p>No. 8 Petrodollar Recycling 1973-1980. Part I: Regional Adjustments and the World Economy<br/>—<i>Burnham Campbell, April 1982</i></p> <p>No. 9 Developing Asia: The Importance of Domestic Policies<br/>—<i>Economics Office Staff under the direction of Seiji Naya, May 1982</i></p> <p>No. 10 Financial Development and Household Savings: Issues in Domestic Resource Mobilization in Asian Developing Countries<br/>—<i>Wan-Soon Kim, July 1982</i></p> <p>No. 11 Industrial Development: Role of Specialized Financial Institutions<br/>—<i>Kedar N. Kohli, August 1982</i></p> <p>No. 12 Petrodollar Recycling 1973-1980. Part II: Debt Problems and an Evaluation of Suggested Remedies<br/>—<i>Burnham Campbell, September 1982</i></p> <p>No. 13 Credit Rationing, Rural Savings, and Financial Policy in Developing Countries<br/>—<i>William James, September 1982</i></p> <p>No. 14 Small and Medium-Scale Manufacturing Establishments in ASEAN Countries: Perspectives and Policy Issues<br/>—<i>Mathias Bruch and Ulrich Hiemenz, March 1983</i></p> <p>No. 15 Income Distribution and Economic Growth in Developing Asian Countries<br/>—<i>J. Malcolm Dowling and David Soo, March 1983</i></p> <p>No. 16 Long-Run Debt-Servicing Capacity of Asian Developing Countries: An Application of Critical Interest Rate Approach<br/>—<i>Jungsoo Lee, June 1983</i></p> <p>No. 17 External Shocks, Energy Policy, and Macroeconomic Performance of Asian Developing Countries: A Policy Analysis<br/>—<i>William James, July 1983</i></p> <p>No. 18 The Impact of the Current Exchange Rate System on Trade and Inflation of Selected Developing Member Countries<br/>—<i>Pradumna Rana, September 1983</i></p> <p>No. 19 Asian Agriculture in Transition: Key Policy Issues<br/>—<i>William James, September 1983</i></p> <p>No. 20 The Transition to an Industrial Economy</p> | <p>in Monsoon Asia<br/>—<i>Harry T. Oshima, October 1983</i></p> <p>No. 21 The Significance of Off-Farm Employment and Incomes in Post-War East Asian Growth<br/>—<i>Harry T. Oshima, January 1984</i></p> <p>No. 22 Income Distribution and Poverty in Selected Asian Countries<br/>—<i>John Malcolm Dowling, Jr., November 1984</i></p> <p>No. 23 ASEAN Economies and ASEAN Economic Cooperation<br/>—<i>Narongchai Akrasanee, November 1984</i></p> <p>No. 24 Economic Analysis of Power Projects<br/>—<i>Nitin Desai, January 1985</i></p> <p>No. 25 Exports and Economic Growth in the Asian Region<br/>—<i>Pradumna Rana, February 1985</i></p> <p>No. 26 Patterns of External Financing of DMCs<br/>—<i>E. Go, May 1985</i></p> <p>No. 27 Industrial Technology Development the Republic of Korea<br/>—<i>S.Y. Lo, July 1985</i></p> <p>No. 28 Risk Analysis and Project Selection: A Review of Practical Issues<br/>—<i>J.K. Johnson, August 1985</i></p> <p>No. 29 Rice in Indonesia: Price Policy and Comparative Advantage<br/>—<i>I. Ali, January 1986</i></p> <p>No. 30 Effects of Foreign Capital Inflows on Developing Countries of Asia<br/>—<i>Jungsoo Lee, Pradumna B. Rana, and Yoshihiro Iwasaki, April 1986</i></p> <p>No. 31 Economic Analysis of the Environmental Impacts of Development Projects<br/>—<i>John A. Dixon et al., EAPI, East-West Center, August 1986</i></p> <p>No. 32 Science and Technology for Development: Role of the Bank<br/>—<i>Kedar N. Kohli and Ifzal Ali, November 1986</i></p> <p>No. 33 Satellite Remote Sensing in the Asian and Pacific Region<br/>—<i>Mohan Sundara Rajan, December 1986</i></p> <p>No. 34 Changes in the Export Patterns of Asian and Pacific Developing Countries: An Empirical Overview<br/>—<i>Pradumna B. Rana, January 1987</i></p> <p>No. 35 Agricultural Price Policy in Nepal<br/>—<i>Gerald C. Nelson, March 1987</i></p> <p>No. 36 Implications of Falling Primary Commodity Prices for Agricultural Strategy in the Philippines<br/>—<i>Ifzal Ali, September 1987</i></p> <p>No. 37 Determining Irrigation Charges: A Framework<br/>—<i>Prabhakar B. Ghate, October 1987</i></p> <p>No. 38 The Role of Fertilizer Subsidies in Agricultural Production: A Review of Select Issues<br/>—<i>M.G. Quibria, October 1987</i></p> <p>No. 39 Domestic Adjustment to External Shocks in Developing Asia<br/>—<i>Jungsoo Lee, October 1987</i></p> <p>No. 40 Improving Domestic Resource Mobilization through Financial Development: Indonesia<br/>—<i>Philip Erquiaga, November 1987</i></p> <p>No. 41 Recent Trends and Issues on Foreign Direct Investment in Asian and Pacific Developing Countries<br/>—<i>P.B. Rana, March 1988</i></p> <p>No. 42 Manufactured Exports from the Philippines: A Sector Profile and an Agenda for Reform<br/>—<i>I. Ali, September 1988</i></p> <p>No. 43 A Framework for Evaluating the Economic Benefits of Power Projects<br/>—<i>I. Ali, August 1989</i></p> <p>No. 44 Promotion of Manufactured Exports in Pakistan</p> |
|---|--|

- Jungsoo Lee and Yoshihiro Iwasaki, September 1989*
- No. 45 Education and Labor Markets in Indonesia: A Sector Survey  
—*Ernesto M. Pernia and David N. Wilson, September 1989*
- No. 46 Industrial Technology Capabilities and Policies in Selected ADCs  
—*Hiroshi Kakazu, June 1990*
- No. 47 Designing Strategies and Policies for Managing Structural Change in Asia  
—*Ifzal Ali, June 1990*
- No. 48 The Completion of the Single European Community Market in 1992: A Tentative Assessment of its Impact on Asian Developing Countries  
—*J.P. Verbiest and Min Tang, June 1991*
- No. 49 Economic Analysis of Investment in Power Systems  
—*Ifzal Ali, June 1991*
- No. 50 External Finance and the Role of Multilateral Financial Institutions in South Asia: Changing Patterns, Prospects, and Challenges  
—*Jungsoo Lee, November 1991*
- No. 51 The Gender and Poverty Nexus: Issues and Policies  
—*M.G. Quibria, November 1993*
- No. 52 The Role of the State in Economic Development: Theory, the East Asian Experience, and the Malaysian Case  
—*Jason Brown, December 1993*
- No. 53 The Economic Benefits of Potable Water Supply Projects to Households in Developing Countries  
—*Dale Whittington and Venkateswarlu Swarna, January 1994*
- No. 54 Growth Triangles: Conceptual Issues and Operational Problems  
—*Min Tang and Myo Thant, February 1994*
- No. 55 The Emerging Global Trading Environment and Developing Asia  
—*Arvind Panagariya, M.G. Quibria, and Narhari Rao, July 1996*
- No. 56 Aspects of Urban Water and Sanitation in the Context of Rapid Urbanization in Developing Asia  
—*Ernesto M. Pernia and Stella LF. Alabastro, September 1997*
- No. 57 Challenges for Asia's Trade and Environment  
—*Douglas H. Brooks, January 1998*
- No. 58 Economic Analysis of Health Sector Projects: A Review of Issues, Methods, and Approaches  
—*Ramesh Adhikari, Paul Gertler, and Anneli Lagman, March 1999*
- No. 59 The Asian Crisis: An Alternate View  
—*Rajiv Kumar and Bibek Debroy, July 1999*
- No. 60 Social Consequences of the Financial Crisis in Asia  
—*James C. Knowles, Ernesto M. Pernia, and Mary Racelis, November 1999*

#### OCCASIONAL PAPERS (OP)

- No. 1 Poverty in the People's Republic of China: Recent Developments and Scope for Bank Assistance  
—*K.H. Moinuddin, November 1992*
- No. 2 The Eastern Islands of Indonesia: An Overview of Development Needs and Potential  
—*Brien K. Parkinson, January 1993*
- No. 3 Rural Institutional Finance in Bangladesh and Nepal: Review and Agenda for Reforms  
—*A.H.M.N. Chowdhury and Marcelia C. Garcia, November 1993*
- No. 4 Fiscal Deficits and Current Account Imbalances of the South Pacific Countries: A Case Study of Vanuatu  
—*T.K. Jayaraman, December 1993*
- No. 5 Reforms in the Transitional Economies of Asia  
—*Pradumna B. Rana, December 1993*
- No. 6 Environmental Challenges in the People's Republic of China and Scope for Bank Assistance  
—*Elisabetta Capannelli and Omkar L. Shrestha, December 1993*
- No. 7 Sustainable Development Environment and Poverty Nexus  
—*K.F. Jalal, December 1993*
- No. 8 Intermediate Services and Economic Development: The Malaysian Example  
—*Sutanu Behuria and Rahul Khullar, May 1994*
- No. 9 Interest Rate Deregulation: A Brief Survey of the Policy Issues and the Asian Experience  
—*Carlos J. Glower, July 1994*
- No. 10 Some Aspects of Land Administration in Indonesia: Implications for Bank Operations  
—*Sutanu Behuria, July 1994*
- No. 11 Demographic and Socioeconomic Determinants of Contraceptive Use among Urban Women in the Melanesian Countries in the South Pacific: A Case Study of Port Vila Town in Vanuatu  
—*T.K. Jayaraman, February 1995*
- No. 12 Managing Development through Institution Building  
—*Hilton L. Root, October 1995*
- No. 13 Growth, Structural Change, and Optimal Poverty Interventions  
—*Shiladitya Chatterjee, November 1995*
- No. 14 Private Investment and Macroeconomic Environment in the South Pacific Island Countries: A Cross-Country Analysis  
—*T.K. Jayaraman, October 1996*
- No. 15 The Rural-Urban Transition in Viet Nam: Some Selected Issues  
—*Sudipto Mundle and Brian Van Arkadie, October 1997*
- No. 16 A New Approach to Setting the Future Transport Agenda  
—*Roger Allport, Geoff Key, and Charles Melhuish, June 1998*
- No. 17 Adjustment and Distribution: The Indian Experience  
—*Sudipto Mundle and V.B. Tulasidhar, June 1998*
- No. 18 Tax Reforms in Viet Nam: A Selective Analysis  
—*Sudipto Mundle, December 1998*
- No. 19 Surges and Volatility of Private Capital Flows to Asian Developing Countries: Implications for Multilateral Development Banks  
—*Pradumna B. Rana, December 1998*
- No. 20 The Millennium Round and the Asian Economies: An Introduction  
—*Dilip K. Das, October 1999*
- No. 21 Occupational Segregation and the Gender Earnings Gap  
—*Joseph E. Zveglic, Jr. and Yana van der Meulen Rodgers, December 1999*
- No. 22 Information Technology: Next Locomotive of Growth?  
—*Dilip K. Das, June 2000*



## STATISTICAL REPORT SERIES (SR)

- |   |   |
|---|---|
| <p>No. 1 Estimates of the Total External Debt of the Developing Member Countries of ADB: 1981-1983<br/>—<i>I.P. David, September 1984</i></p> <p>No. 2 Multivariate Statistical and Graphical Classification Techniques Applied to the Problem of Grouping Countries<br/>—<i>I.P. David and D.S. Maligalig, March 1985</i></p> <p>No. 3 Gross National Product (GNP) Measurement Issues in South Pacific Developing Member Countries of ADB<br/>—<i>S.G. Tiwari, September 1985</i></p> <p>No. 4 Estimates of Comparable Savings in Selected DMCs<br/>—<i>Hananto Sigit, December 1985</i></p> <p>No. 5 Keeping Sample Survey Design and Analysis Simple<br/>—<i>I.P. David, December 1985</i></p> <p>No. 6 External Debt Situation in Asian Developing Countries<br/>—<i>I.P. David and Jungsoo Lee, March 1986</i></p> <p>No. 7 Study of GNP Measurement Issues in the South Pacific Developing Member Countries. Part I: Existing National Accounts of SPDMCs—Analysis of Methodology and Application of SNA Concepts<br/>—<i>P. Hodgkinson, October 1986</i></p> <p>No. 8 Study of GNP Measurement Issues in the South Pacific Developing Member Countries. Part II: Factors Affecting Inter-country Comparability of Per Capita GNP<br/>—<i>P. Hodgkinson, October 1986</i></p> <p>No. 9 Survey of the External Debt Situation</p> | <p>in Asian Developing Countries, 1985<br/>—<i>Jungsoo Lee and I.P. David, April 1987</i></p> <p>No. 10 A Survey of the External Debt Situation in Asian Developing Countries, 1986<br/>—<i>Jungsoo Lee and I.P. David, April 1988</i></p> <p>No. 11 Changing Pattern of Financial Flows to Asian and Pacific Developing Countries<br/>—<i>Jungsoo Lee and I.P. David, March 1989</i></p> <p>No. 12 The State of Agricultural Statistics in Southeast Asia<br/>—<i>I.P. David, March 1989</i></p> <p>No. 13 A Survey of the External Debt Situation in Asian and Pacific Developing Countries: 1987-1988<br/>—<i>Jungsoo Lee and I.P. David, July 1989</i></p> <p>No. 14 A Survey of the External Debt Situation in Asian and Pacific Developing Countries: 1988-1989<br/>—<i>Jungsoo Lee, May 1990</i></p> <p>No. 15 A Survey of the External Debt Situation in Asian and Pacific Developing Countries: 1989-1992<br/>—<i>Min Tang, June 1991</i></p> <p>No. 16 Recent Trends and Prospects of External Debt Situation and Financial Flows to Asian and Pacific Developing Countries<br/>—<i>Min Tang and Aludia Pardo, June 1992</i></p> <p>No. 17 Purchasing Power Parity in Asian Developing Countries: A Co-Integration Test<br/>—<i>Min Tang and Ronald Q. Butiong, April 1994</i></p> <p>No. 18 Capital Flows to Asian and Pacific Developing Countries: Recent Trends and Future Prospects<br/>—<i>Min Tang and James Villafuerte, October 1995</i></p> |
|---|---|

## SPECIAL STUDIES, OUP (SS,Comm)

(Co-published titles; Available commercially through Oxford University Press Offices, Edward Elgar Publishing, and Palgrave MacMillan)

FROM OXFORD UNIVERSITY PRESS:

Oxford University Press (China) Ltd  
18th Floor, Warwick House East  
Taikoo Place, 979 King's Road  
Quarry Bay, Hong Kong  
Tel (852) 2516 3222  
Fax (852) 2565 8491  
E-mail: [webmaster@oupchina.com.hk](mailto:webmaster@oupchina.com.hk)  
Web: [www.oupchina.com.hk](http://www.oupchina.com.hk)

- |   |   |
|---|---|
| <p>1. Informal Finance: Some Findings from Asia<br/><i>Prabhu Ghate et. al., 1992</i><br/>\$15.00 (paperback)</p> <p>2. Mongolia: A Centrally Planned Economy in Transition<br/><i>Asian Development Bank, 1992</i><br/>\$15.00 (paperback)</p> <p>3. Rural Poverty in Asia, Priority Issues and Policy Options<br/><i>Edited by M.G. Quibria, 1994</i><br/>\$25.00 (paperback)</p> <p>4. Growth Triangles in Asia: A New Approach to Regional Economic Cooperation<br/><i>Edited by Myo Thant, Min Tang, and Hiroshi Kakazu</i><br/><i>1st ed., 1994</i> \$36.00 (hardbound)<br/><i>Revised ed., 1998</i> \$55.00 (hardbound)</p> <p>5. Urban Poverty in Asia: A Survey of Critical Issues<br/><i>Edited by Ernesto Pernia, 1994</i><br/>\$18.00 (paperback)</p> <p>6. Critical Issues in Asian Development:</p> | <p>Theories, Experiences, and Policies<br/><i>Edited by M.G. Quibria, 1995</i><br/>\$15.00 (paperback)<br/>\$36.00 (hardbound)</p> <p>7. Financial Sector Development in Asia<br/><i>Edited by Shahid N. Zahid, 1995</i><br/>\$50.00 (hardbound)</p> <p>8. Financial Sector Development in Asia: Country Studies<br/><i>Edited by Shahid N. Zahid, 1995</i><br/>\$55.00 (hardbound)</p> <p>9. Fiscal Management and Economic Reform in the People's Republic of China<br/><i>Christine P.W. Wong, Christopher Heady, and Wing T. Woo, 1995</i><br/>\$15.00 (paperback)</p> <p>10. From Centrally Planned to Market Economies: The Asian Approach<br/><i>Edited by Pradumna B. Rana and Naved Hamid, 1995</i><br/>Vol. 1: Overview<br/>\$36.00 (hardbound)<br/>Vol. 2: People's Republic of China and Mongolia<br/>\$50.00 (hardbound)<br/>Vol. 3: Lao PDR, Myanmar, and Viet Nam<br/>\$50.00 (hardbound)</p> <p>11. Current Issues in Economic Development: An Asian Perspective<br/><i>Edited by M.G. Quibria and J. Malcolm Dowling, 1996</i><br/>\$50.00 (hardbound)</p> <p>12. The Bangladesh Economy in Transition<br/><i>Edited by M.G. Quibria, 1997</i></p> |
|---|---|

- \$20.00 (hardbound)
13. The Global Trading System and Developing Asia  
*Edited by Arvind Panagariya, M.G. Quibria,  
and Narhari Rao, 1997*  
\$55.00 (hardbound)
  14. Social Sector Issues in Transitional Economies of Asia  
*Edited by Douglas H. Brooks and Myo Thant, 1998*  
\$25.00 (paperback)  
\$55.00 (hardbound)

FROM EDWARD ELGAR:  
Marston Book Services Limited  
PO Box 269, Abingdon  
Oxon OX14 4YN  
United Kingdom  
Tel +44 1235 465500  
Fax +44 1235 465555  
Email: [direct.order@marston.co.uk](mailto:direct.order@marston.co.uk)  
Web: [www.marston.co.uk](http://www.marston.co.uk)

1. Reducing Poverty in Asia: Emerging Issues in Growth,  
Targeting, and Measurement  
*Edited by Christopher M. Edmonds, 2003*

FROM PALGRAVE MACMILLAN:  
Palgrave Macmillan Ltd  
Houndmills  
Basingstoke  
Hampshire RG21 6XS  
United Kingdom  
Tel: +44 (0)1256 329242  
Fax: +44 (0)1256 479476  
Email: [orders@palgrave.com](mailto:orders@palgrave.com)  
Web: [www.palgrave.com/home/](http://www.palgrave.com/home/)

1. Poverty, Growth, and Institutions in Developing Asia  
*Edited by Ernesto M. Pernia and Anil B. Deolalikar,  
2003*

## SPECIAL STUDIES, COMPLIMENTARY (SSC)

(Published in-house; Available through ADB Office of External Relations; Free of Charge)

1. Improving Domestic Resource Mobilization Through  
Financial Development: Overview *September 1985*
2. Improving Domestic Resource Mobilization Through  
Financial Development: Bangladesh *July 1986*
3. Improving Domestic Resource Mobilization Through  
Financial Development: Sri Lanka *April 1987*
4. Improving Domestic Resource Mobilization Through  
Financial Development: India *December 1987*
5. Financing Public Sector Development Expenditure  
in Selected Countries: Overview *January 1988*
6. Study of Selected Industries: A Brief Report  
*April 1988*
7. Financing Public Sector Development Expenditure  
in Selected Countries: Bangladesh *June 1988*
8. Financing Public Sector Development Expenditure  
in Selected Countries: India *June 1988*
9. Financing Public Sector Development Expenditure  
in Selected Countries: Indonesia *June 1988*
10. Financing Public Sector Development Expenditure  
in Selected Countries: Nepal *June 1988*
11. Financing Public Sector Development Expenditure  
in Selected Countries: Pakistan *June 1988*
12. Financing Public Sector Development Expenditure  
in Selected Countries: Philippines *June 1988*
13. Financing Public Sector Development Expenditure  
in Selected Countries: Thailand *June 1988*
14. Towards Regional Cooperation in South Asia:  
ADB/EWC Symposium on Regional Cooperation  
in South Asia *February 1988*
15. Evaluating Rice Market Intervention Policies:  
Some Asian Examples *April 1988*
16. Improving Domestic Resource Mobilization Through  
Financial Development: Nepal *November 1988*
17. Foreign Trade Barriers and Export Growth  
*September 1988*
18. The Role of Small and Medium-Scale Industries in the  
Industrial Development of the Philippines  
*April 1989*
19. The Role of Small and Medium-Scale Manufacturing  
Industries in Industrial Development: The Experience of  
Selected Asian Countries  
*January 1990*
20. National Accounts of Vanuatu, 1983-1987  
*January 1990*
21. National Accounts of Western Samoa, 1984-1986  
*February 1990*
22. Human Resource Policy and Economic  
Development: Selected Country Studies  
*July 1990*
23. Export Finance: Some Asian Examples  
*September 1990*
24. National Accounts of the Cook Islands, 1982-1986  
*September 1990*
25. Framework for the Economic and Financial Appraisal of  
Urban Development Sector Projects *January 1994*
26. Framework and Criteria for the Appraisal  
and Socioeconomic Justification of Education Projects  
*January 1994*
27. Guidelines for the Economic Analysis of  
Telecommunications Projects  
*Asian Development Bank, 1997*
28. Guidelines for the Economic Analysis of Water Supply Projects  
*Asian Development Bank, 1998*
29. Investing in Asia  
*Co-published with OECD, 1997*
30. The Future of Asia in the World Economy  
*Co-published with OECD, 1998*
31. Financial Liberalisation in Asia: Analysis and Prospects  
*Co-published with OECD, 1999*
32. Sustainable Recovery in Asia: Mobilizing Resources for  
Development  
*Co-published with OECD, 2000*
33. Technology and Poverty Reduction in Asia and the Pacific  
*Co-published with OECD, 2001*
34. Asia and Europe  
*Co-published with OECD, 2002*

## SPECIAL STUDIES, ADB (SS, ADB)

(Published in-house; Available commercially through ADB Office of External Relations)

1. Rural Poverty in Developing Asia  
*Edited by M.G. Quibria*  
Vol. 1: Bangladesh, India, and Sri Lanka, 1994  
\$35.00 (paperback)  
Vol. 2: Indonesia, Republic of Korea, Philippines,  
and Thailand, 1996  
\$35.00 (paperback)
2. Gender Indicators of Developing Asian  
and Pacific Countries  
*Asian Development Bank, 1993*  
\$25.00 (paperback)
3. External Shocks and Policy Adjustments:  
Lessons from the Gulf Crisis  
*Edited by Naved Hamid and Shahid N. Zahid, 1995*  
\$15.00 (paperback)
4. Indonesia-Malaysia-Thailand Growth Triangle:  
Theory to Practice  
*Edited by Myo Thant and Min Tang, 1996*  
\$15.00 (paperback)
5. Emerging Asia: Changes and Challenges  
*Asian Development Bank, 1997*  
\$30.00 (paperback)
6. Asian Exports  
*Edited by Dilip Das, 1999*  
\$35.00 (paperback)  
\$55.00 (hardbound)
7. Development of Environment Statistics in Developing  
Asian and Pacific Countries  
*Asian Development Bank, 1999*  
\$30.00 (paperback)
8. Mortgage-Backed Securities Markets in Asia  
*Edited by S.Ghon Rhee & Yutaka Shimomoto, 1999*  
\$35.00 (paperback)
9. Rising to the Challenge in Asia: A Study of Financial  
Markets  
*Asian Development Bank*  
Vol. 1: An Overview, 2000 \$20.00 (paperback)  
Vol. 2: Special Issues, 1999 \$15.00 (paperback)  
Vol. 3: Sound Practices, 2000 \$25.00 (paperback)  
Vol. 4: People's Republic of China, 1999 \$20.00  
(paperback)  
Vol. 5: India, 1999 \$30.00 (paperback)  
Vol. 6: Indonesia, 1999 \$30.00 (paperback)  
Vol. 7: Republic of Korea, 1999 \$30.00 (paperback)  
Vol. 8: Malaysia, 1999 \$20.00 (paperback)  
Vol. 9: Pakistan, 1999 \$30.00 (paperback)  
Vol. 10: Philippines, 1999 \$30.00 (paperback)  
Vol. 11: Thailand, 1999 \$30.00 (paperback)  
Vol. 12: Socialist Republic of Viet Nam, 1999 \$30.00  
(paperback)
10. Corporate Governance and Finance in East Asia:  
A Study of Indonesia, Republic of Korea, Malaysia,  
Philippines and Thailand  
*J. Zhuang, David Edwards, D. Webb,  
& Ma. Virginita Capulong*  
Vol. 1: A Consolidated Report, 2000 \$10.00 (paperback)  
Vol. 2: Country Studies, 2001 \$15.00 (paperback)
11. Financial Management and Governance Issues  
*Asian Development Bank, 2000*  
Cambodia \$10.00 (paperback)  
People's Republic of China \$10.00 (paperback)  
Mongolia \$10.00 (paperback)  
Pakistan \$10.00 (paperback)  
Papua New Guinea \$10.00 (paperback)  
Uzbekistan \$10.00 (paperback)  
Viet Nam \$10.00 (paperback)  
Selected Developing Member Countries \$10.00 (paperback)
12. Government Bond Market Development in Asia  
*Edited by Yun-Hwan Kim, 2001*  
\$25.00 (paperback)
13. Intergovernmental Fiscal Transfers in Asia: Current Practice  
and Challenges for the Future  
*Edited by Paul Smoke and Yun-Hwan Kim, 2002*  
\$15.00 (paperback)
14. Guidelines for the Economic Analysis of Projects  
*Asian Development Bank, 1997*  
\$10.00 (paperback)
15. Guidelines for the Economic Analysis of  
Telecommunications Projects  
*Asian Development Bank, 1997*  
\$10.00 (paperback)
16. Handbook for the Economic Analysis of Water Supply Projects  
*Asian Development Bank, 1999*  
\$10.00 (hardbound)
17. Handbook for the Economic Analysis of Health Sector Projects  
*Asian Development Bank, 2000*  
\$10.00 (paperback)
18. Handbook for Integrating Poverty Impact Assessment in  
the Economic Analysis of Projects  
*Asian Development Bank, 2001*  
\$10.00 (paperback)
19. Handbook for Integrating Risk Analysis in the Economic  
Analysis of Projects  
*Asian Development Bank, 2002*  
\$10.00 (paperback)
20. Guidelines for the Financial Governance and  
Management of Investment Projects Financed by the  
Asian Development Bank  
*Asian Development Bank, 2002*  
\$10.00 (paperback)
21. Handbook on Environment Statistics  
*Asian Development Bank, 2002*  
\$10.00 (hardback)
22. Defining an Agenda for Poverty Reduction, Volume 1  
*Edited by Christopher Edmonds and Sara Medina, 2002*  
\$15.00 (paperback)
23. Defining an Agenda for Poverty Reduction, Volume 2  
*Edited by Isabel Ortiz, 2002*  
\$15.00 (paperback)
24. Economic Analysis of Policy-based Operations: Key  
Dimensions  
*Asian Development Bank, 2003*  
\$10.00 (paperback)