

Neubäumer, Renate Ingrid; Müller, Steffen

**Conference Paper**

## Size of Training Firms and Long-Run Unemployment The Role of Firms, Luck and Ability in Young Workers Careers

Beiträge zur Jahrestagung des Vereins für Socialpolitik 2015: Ökonomische Entwicklung -  
Theorie und Politik - Session: Wealth Distribution, No. C15-V3

**Provided in Cooperation with:**

Verein für Socialpolitik / German Economic Association

*Suggested Citation:* Neubäumer, Renate Ingrid; Müller, Steffen (2015) : Size of Training Firms and Long-Run Unemployment The Role of Firms, Luck and Ability in Young Workers Careers, Beiträge zur Jahrestagung des Vereins für Socialpolitik 2015: Ökonomische Entwicklung - Theorie und Politik - Session: Wealth Distribution, No. C15-V3, ZBW - Deutsche Zentralbibliothek für Wirtschaftswissenschaften, Leibniz-Informationszentrum Wirtschaft

This Version is available at:

<https://hdl.handle.net/10419/112923>

**Standard-Nutzungsbedingungen:**

Die Dokumente auf EconStor dürfen zu eigenen wissenschaftlichen Zwecken und zum Privatgebrauch gespeichert und kopiert werden.

Sie dürfen die Dokumente nicht für öffentliche oder kommerzielle Zwecke vervielfältigen, öffentlich ausstellen, öffentlich zugänglich machen, vertreiben oder anderweitig nutzen.

Sofern die Verfasser die Dokumente unter Open-Content-Lizenzen (insbesondere CC-Lizenzen) zur Verfügung gestellt haben sollten, gelten abweichend von diesen Nutzungsbedingungen die in der dort genannten Lizenz gewährten Nutzungsrechte.

**Terms of use:**

*Documents in EconStor may be saved and copied for your personal and scholarly purposes.*

*You are not to copy documents for public or commercial purposes, to exhibit the documents publicly, to make them publicly available on the internet, or to distribute or otherwise use the documents in public.*

*If the documents have been made available under an Open Content Licence (especially Creative Commons Licences), you may exercise further usage rights as specified in the indicated licence.*

# **Size of Training Firms and Long-Run Unemployment – The Role of Firms, Luck and Ability in Young Workers' Careers\***

Steffen Müller† and Renate Neubäumer††

## **Abstract**

We develop the hypotheses that the size of training firms affects long-run cumulated unemployment exposure, and that the access to large training firms depends on young workers' ability and their luck to live in a region with many large and medium-sized training firms. We test these hypotheses empirically by using a large administrative data set and find corroborative evidence.

Keywords: unemployment, training, apprenticeship, young workers, mobility, firm size

JEL Classification: D21, L10, L25, L26, L29, M13

† Halle Institute for Economic Research and Magdeburg University

†† University Koblenz-Landau

\*The authors thank participants of the 2014 meeting of the committee for education economics of the German Economic Association for helpful comments and, in particular, Stefan Wolter for a valuable discussion.

## 1. Introduction

Educational decisions have long-lasting effects on labor market outcomes (see e.g. Card 1999, 2001; Heckman et al. 2006, Carneiro and Heckman 2003). However, not only pre-school education and school choice matter for chances in future working life (Cunha and Heckman 2007, 2008; Hoxby, 2003a, 2003b), but also decisions on vocational education and training – the first years in the labor market matter most for occupational careers (von Wachter and Bender, 2006).

The size of training firms plays a major role in this: Young workers who start their occupational careers in large firms with internal labor markets and lower turnover rates, achieve the highest positions in the wage distribution (von Wachter and Bender, 2006). However, no research on the effect of the size of training firms on long-run unemployment exists. The study of Schmillen and Umkehrer (2013) sets in later and analyzes how unemployment in the first years after graduation from vocational training affects long-run unemployment.<sup>1</sup> Our paper fills this gap. We use a large administrative data set that follows graduated apprentices during their working life and are able to show that training in large and medium-sized firms reduces long-run unemployment.

These findings, however, may simply be the result of sorting processes: Larger training firms with higher wages attract and choose the most able workers (Acemoglu and Pischke, 1998; Neubäumer, 1999; von Wachter and Bender, 2006; Möller and Umkehrer, 2014). Soskice (1994) even compares applying for attractive training positions with a rank order tournament. Our solution to this endogeneity issue is to proxy for ability. We assume that rank order tournaments take place and take into account an institutional peculiarity of the German training system: the empirically observable regional immobility of apprentices. Accordingly, we compute rankings of firm attractiveness in cohort\*region cells to proxy for apprentices' ability.

---

<sup>1</sup> Moreover, many studies examine the impact of youth unemployment on future unemployment in the United States and Great Britain, countries without an apprenticeship system (see e.g. Ellwood, 1982; Mroz and Savage, 2006; Greg, 2001; Bell and Blanchflower, 2011).

Our results provide evidence that long-run unemployment depends on young workers' ability *and* on their good luck to live in a region with many attractive training firms and thus better access to high-quality training and jobs with lower turnover. Our results imply that young workers can help their good luck along by applying for an apprenticeship in a "better" region with more attractive training firms. Put it differently: regional mobility early in the career can reduce long-run unemployment exposure.

## **2. Theoretical Considerations and Empirical Evidence in the Literature**

### **2.1. Firm size matters**

In many countries, the school-to-work transition plays a major role for young workers' future occupational careers (Ryan, 2001). The first years in a labor market not only matter for the future position in the wage distribution (von Wachter and Bender, 2006; Göggel and Zwick, 2012), but also for unemployment immediately after the apprenticeship or shortly afterwards (e.g. Franz and Zimmermann, 2002; Somaggio, 2009). Such early unemployment in turn influences long-run unemployment (Schmillen and Umkehrer, 2013).

The size of the training firm has a considerable impact on graduates' long-run unemployment. First, firm size is closely related to labor market segmentation and hence with differing turnover rates and unequal access to internal labor markets. Second, firms that train for unlike sub-labor markets decide on different training strategies, which result in dissimilar risks of unemployment for their graduates during their whole occupational careers. We come back to these issues below.

According to the segmentation concept,<sup>2</sup> the labor market consists of a number of distinct sub-markets that are not accessible to all workers and are mainly differentiated by stability characteristics (Reich et al., 1973). Internal labor markets demand stable working habits and

---

<sup>2</sup> Labor market segmentation is a well-established concept of labor market research (especially in sociology). See e.g. Doeringer and Piore (1971), Thurow (1975), and Reich et al. (1973) together with the newer work by Reich (2008) and Osterman (2011).

guarantee workers permanent employment together with “job ladders” and high wages. By contrast, external labor markets do not require stable working habits, as labor demand fluctuates widely and thus jobs are instable.<sup>3</sup>

Firm size plays a major role for labor market segmentation, as the stability of jobs is closely related to the stability of firms’ demand for goods and services and associated factors, such as capital intensity, human capital stock, and technological level (Reich et al. 1973; Sengenberger 1987; Neubäumer 1999). Large and medium-sized firms, which capture product markets with a stable demand, can offer secure jobs in internal labor markets with high wages to most of their employees. By contrast, small firms, which typically have to deal with a changeable demand for their products due to high seasonal and cyclical fluctuations and demand shifts between competing firms, have to offer instable jobs and thus are characterized by high turnover rates.

In this paper, we will look at consequences of educational decision that took place in the 1970ies and 1980ies in Germany. At the time, firm size was significantly correlated with the stability of labor demand in Germany and this is crucial for segmentation (Cramer and Koller, 1988). Further empirical results directly show a strong connection between firm size and sub-labor markets (Biehler and Brandes 1981; Wenger 1984; Szydlik 1990). Therefore, Blossfeld and Mayer (1988: 126-7) conclude: “The probability of the existence of an internal labor market increases with firm size”.

Firms of different size that train for unlike labor markets decide on different training strategies, which in turn are closely associated with various risks of unemployment. Most small and very small firms train for external labor markets and pursue a production-oriented strategy: They hire apprentices as substitutes for unskilled and skilled workers (Lindley 1975; Fougère and Schwerdt

---

<sup>3</sup> For Germany, the dualistic labor market approach was expanded to a tripartite approach with the addition of an occupation-specific segment (Lutz and Sengenberger, 1974; Sengenberger, 1987; Toft, 2004). In occupation-specific sub-labor markets the demand for and the supply of labor is variable in relation to single firms, but in the trade as a whole the demand of all firms is relatively stable. Therefore, workers have to be mobile between firms but mostly find a job that requires their occupation-specific and trade-specific qualification.

2002) and have no training costs or even training profits.<sup>4</sup> These firms train independent of their need of skilled workers, and thus too many apprentices are trained in certain occupations that are specific for small firms (Neubäumer 1999). As a result, many graduates do not find a job in their training occupation or another skilled job. They either have to accept unskilled jobs or become unemployed. Both alternatives lead to a high risk of unemployment during their occupational life.

On the other hand, large firms and large medium-sized firms that need skilled workers for their internal labor markets pursue an investment-oriented strategy. They invest high amounts in the training of their apprentices and, consequently, achieve high returns in the form of future rents from skilled workers. In this case, firms only offer training positions if they have jobs to fill for which they expect future returns.<sup>5</sup> Thus their retention rates are high and their graduates can immediately use and increase their newly-gained human capital. Furthermore, a quality-training makes a graduate attractive for other firms. All this leads to good employment prospects for apprentices of large and medium-sized firms.

## **2.2. Attractiveness of Training Firms, Ability, and Regional Immobility**

Many authors suggest that applications for attractive jobs equal a rank tournament, and that workers select themselves into firms based on ability (Thurow, 1975; Lazear and Rosen, 1981; Foster et al., 2008). In this, firm size plays a major role (Garen, 1985; Barron, Black and Loewenstein, 1987; Abowd, Belman and Levine, 2004). Idson and Oi (1999: 107) even conclude: “Firms that achieve large size create jobs (technologies, equipment, and work organizations) that must be matched with

---

<sup>4</sup> For many small firms, investing in apprenticeship training would not pay off because most of their apprentices leave soon after graduation, not least because of unstable and non-competitive jobs.

<sup>5</sup> A number of medium-sized and small firms often train to fill their own skilled jobs, but due to a high fluctuation of their workforce firms often do not have free jobs when their apprentices graduate, or need more skilled workers. A balance is attained by the occupation-specific labor market of a certain trade, where institutions like the chambers of craft ensure that many firms participate in an investment-oriented apprenticeship training, but substantial training costs prevent too many apprentices being trained. As a result, apprentices have good chances of finding jobs in their training firm or external firms of the same trade, where they can apply their occupation- and trade-specific human capital. Nevertheless, these workers have to be mobile between firms and therefore may be unemployed for short periods. Overall, these apprentices have a medium risk of long-run unemployment.

more productive individuals". Wage levels are, of course, also important for the attractiveness of jobs and for sorting of workers to firms (Kramarz, and Margolis, 1999; Card, Heining, and Kline, 2013).

Such sorting processes also take place during the transition between school and training system. On the one hand, firms thoroughly screen potential new apprentices by school grades, internships, interviews and entry exams (Windolf and Hohn, 1984; Neubäumer, 1999; von Wachter and Bender, 2006). On the other hand, the attitude toward potential apprenticeships among German schoolchildren who are not going on to higher education is similar to that toward potential universities: They rank apprenticeships across sectors and firms (Soskice, 1994). As a result, the most skilled and motivated young people get the most attractive apprenticeships in large and medium-sized firms that offer high-quality training and access to internal labor markets with high wages. Therefore, the size and the wage levels of training firms are closely linked with the ability of apprentices, so that a large part of the firm size effect on long-run unemployment may simply be the result of different ability.

To adjust for such non-random sorting of young workers into firms, other authors use fixed-effects strategies and instrumental variables. For example, von Wachter and Bender (2006) estimate long-term wage losses suffered by young German workers who leave their training firm at the end of apprenticeship. They cannot simply compare the wages of stayers and leavers, as the pool of displaced workers has nonrandom nature for several reasons (e.g. leavers may be adversely selected and the sample of leavers is disproportionately drawn from firms with high turnover rates). Therefore, von Wachter and Bender use changes over time in firm- and age-specific labor demand as instrument for displacement and, furthermore, include firm fixed effects to control for any bias from initial sorting of workers into firms based on unobserved ability. Gregg (2001) and Schmillen and Umkehrer (2013), who estimate the impact of early unemployment on long-run unemployment, use the local unemployment rate at the time of graduation from the apprenticeship system as an instrument. Furthermore, Schmillen and Umkehrer (2013) use a dummy variable for whether an

individual's training firm closes in the year of his graduation as a second instrument and control for initial sorting with a fixed-effects strategy.

We start from a perfect rank-order tournament for attractive training firms and regard firm size and wage level as determinants of attractiveness. Given this assumption, firm size and the wage level are perfect indicators of a young worker's ability. However, apprentices are regionally very immobile, which is an institutional peculiarity of the German training system due to the young age of apprentices<sup>6</sup> and their attachment to their home. Young workers are not ready or willing to leave their family, their friends and their home for an attractive training position as interviews show (Wolf et al., 2004). Instead they decide in favor of less promising training positions not far from home and keep living with their parents. Financial aspects also play a role in this, especially as mobility subsidies and possibilities to live in dormitories for apprentices are not known to most young people (Wolf et al., 2004).

As a result of regional immobility, size and the wage level of the training firm are no longer perfect indicators for an apprentice's ability. Given the same ability, a young person does an apprenticeship in a less attractive firm if she lives in a region with less favorable supply side opportunities and vice versa. However, "within a region or a locality, schoolchildren and their parents, as well as their schoolteachers, will usually have a clear idea of the best companies with which to apprentice", and in this the size of the training company plays a major role (Soskice 1994: 33). Therefore, we assume that in each region (and each cohort) a rank-order tournament for training positions takes place, and infer that the rank of an apprentice's training firm in the region- and cohort-specific ranking is an indicator for ability.

In our estimations we use rankings of firm sizes and wage levels. As the regional size distribution of training positions may change in the business cycle and/or due to various trends in the training behavior of firms of different sizes, our rankings are computed within region\*cohort cells.

---

<sup>6</sup> In our data, 45 percent of apprentices are not older than 16 years, and 75 percent not older than 17, and 88 percent are at most 18 when they start their vocational training.



Furthermore, we consider that apprentices may choose a certain sector for training *before* they look for a training position.

### 3. Data

The data set used in our study is the Sample of Integrated Labor Market Biographies (SIAB) encompassing the years 1975 to 2010. It is a 2 percent random sample of the universe of German employees registered by the social security system provided by the Institute for Employment Research (IAB) in Nuremberg. The data contains daily information on individuals' labor market, benefit receipt, and training participation history and is organized as a panel. Information on employment periods origins in employers compulsory social security notifications while information on benefit receipt and program participation are generated directly within the Federal Employment Agency. Individuals not covered by the social security system, like civil servants, self-employed, or individuals out of labor force, are not included.

Our dependent variable is the number of days in unemployment. Specifically, this is the number of days in benefit receipt or program participation. We are not able to identify individuals actively looking for a job if they, for some reason, do not take up unemployment benefits and are not registered as unemployed job seekers. We start counting days in unemployment three years after completed apprenticeship for the subsequent 15 years. This restricts our sample to individuals completing apprenticeship at the latest in 1992 and automatically excludes East Germans who have not been part of the data before 1992. We exclude women to mitigate selectivity into subsequent labor force participation.<sup>7</sup>

The data contains information on apprenticeship status, which is, however, contaminated with information on individuals in internships and other short term training measures. To exclude these short term measures, we kept only individuals who completed a non-interrupted duration within the

---

<sup>7</sup> We also exclude spells in marginal employment as these have not been included in the data before 1999.

apprenticeship status of two to four years before the age of 25.<sup>8</sup> Although we have (noisy) information on actual apprenticeship completion, we decide not to condition on completion in order to capture the full impact of employer characteristics on subsequent unemployment in an Intent to Treat (ITT) framework. In this framework, any employer induced change in graduation probability is part of the employer effect on long-run unemployment. Besides duration in employment and unemployment, we observe individuals' age, education, and occupation. The data also contains employer characteristics and we will make use of sector, location, plant size, and the year the plant was observed for the last time (as a proxy for the year of plant closure).

#### 4. Empirical Approach

We aim on estimating the effect of training firm size on long-run unemployment exposure and acknowledge the possibility that innate worker ability is related to firm size. A basic model ignoring the possible confounding influence of ability is

$$UE_{ics} = \beta_1 \log(size)_{ics} + \gamma' controls_{ics} + \mu_{cs} + \varepsilon_{ics} \quad (1)$$

where  $i$  denotes individuals,  $c$  apprentice cohorts,  $s$  federal states,  $UE$  is the number of days in unemployment,  $size$  is the number of workers in the training firm,  $controls$  is a vector of controls,  $\mu$  are cohort\*state interactions, and  $\varepsilon$  is an idiosyncratic error term. The model contains no time index as we regress long-run outcomes on initial conditions so that we end up with one observation per individual. Due to the cohort\*state fixed effects, we compare apprentices who started their apprenticeship in the same year and state. The coefficient  $\beta_1$  gives the causal effect of training firm size if the error term is uncorrelated with the regressors. In the theoretical considerations to our paper, we argued why we expect a non-random sorting of young workers to training firms of

---

<sup>8</sup> The duration of apprenticeship training depends on the occupation but typically lasts between two and a half and three and a half years.

different size and with different wage levels. If individuals with high ability tend to select into better training firms and if better firms are on average larger,  $\beta_1$  is biased downwards, i.e. the effect will be too negative.

We pursue a proxy variable approach to check for initial sorting. The idea is to add a proxy for ability to equation (1) in order to purge  $\varepsilon_{ics}$  from ability. We use the rank of an apprentice's training firm in the local size and wage distributions to proxy ability. The rank proxies ability if there is a size or wage based rank order tournament of apprentices into local training firms, i.e. if apprentices search at the local labor market and if – on average – the best apprentices will find the best training firms.

We measure plant size by the number of all employees subject to social security payments. The computation of the ranking can be done in several ways and depends on assumptions on the search behavior of apprentices. For instance, one could assume that apprentices look at firm size, only. A ranking would then be based on the residual of the following regression:

$$\log(size)_{icr} = \mu_{cr} + u_{icr} \quad (2)$$

where  $c$  is the apprentice cohort, and  $r$  denotes counties, i.e. regional authorities nested in federal states  $s$ . The residual  $u$  is the deviation of the size of an apprentice's training plant from the local size distribution of all training plants having apprentices starting in cohort  $c$  at region  $r$ .

If one simply includes the residual  $u$  into equation (1), one does not capture the relative position of the apprentice's training firm in the local labor market if the *variance* of plant size varies over cohort\*region cells. This is simply because the residual of the worst training plant in a low variance cohort\*region cell might well be larger (i.e. closer to zero) than the residual of a training plant being at the, say, 30<sup>th</sup> percentile of the size distribution of a high variance cohort\*region cell. To truly reflect the relative position in a cohort\*year cell, we will therefore always use the rank within

cohort\*region cells as a proxy for ability. Our proxy variable regression will have the following general form:

$$UE_{ics} = \beta_1 \log(size)_{ics} + \beta_2 rank_{icr} + \gamma' controls_{ics} + \mu_{cs} + \varepsilon_{ics} \quad (3)$$

If the size based rank order tournament exists, apprentices can be ranked by the value of  $u$  only if the choice of the training plant is exclusively based on firm size. If young workers first decide in which sector they want to be trained and then look at plant size, one would ideally compute residuals within cohort\*region\*sector cells. However, cell sizes are too small in our sample. To solve this dimensionality problem we add 17 sector dummies to equation (2)

$$\log(size)_{icr} = \mu_{cr} + \sum_{j=1}^{17} \alpha_j sector_{cr} + u_{icr} \quad (4)$$

so that residual  $u$  now reflects size residuals after controlling for sectoral size differentials and cohort\*region dummies.

Our dataset contains information on the training plant but not on the training firm. This can be a problem for our estimation strategy as characteristics that influence the attractiveness of a training position and thus the ranking process (e.g. training quality, turnover rates, access to internal labor markets with high wages) often depend on firm size and not on plant size. For example, the subsidiaries of large banks are small plants themselves but offer attractive training positions embedded in a large company. We may capture part of the problem by controlling for sectors in equation (4). A solution to this issue can be the use of wages instead of size. The wage level of a firm is also a key determinant of firm attractiveness but does not differ much from the wage level of its plants. The plant wage is therefore a promising alternative for building an ability proxy. We measure the wage level by the median plant wage. To be clear, we don't use the distribution of apprenticeship wages as these are heavily regulated and occupation specific. We rather argue that

apprentices are forward looking and sort into plants on the basis of post-training wage expectations. The computation of the ranking follows along the same lines as the computation of the size ranking. The residual is now the deviation of the median wage of an apprentice's training plant from the median-wage distribution of all training plants having apprentices starting in cohort  $c$  at region  $r$ . Analogue to the size ranking, we will also present wage rankings conditional on sector affiliation. To sum up, our approach yields estimates for the effects of firm size by comparing individuals starting their apprenticeship in the same year in the same federal state. We condition on further controls and the relative position of an individual's training plant in the distribution of plant size and plant-level median wages in year\*region cells.

## 5. Results

### 5.1. Descriptive Evidence

We start with a description of 15 year employment and unemployment as identified in our data. We follow Schmillen and Möller (2012) and label the unobserved remainder of the professional career as 'neither employed nor unemployed'. This category also encompasses periods of work outside the social security system, e.g. as a civil servant or self-employed. As described above, the 15 year period starts three years after the end of the apprenticeship spell. This is done in order to get rid of transitory unemployment or non-employment spells associated with sorting or military service.

Table 1 shows that the average number of days in unemployment amounts to roughly nine months distributed over 2.3 distinct unemployment spells.<sup>9</sup> In the vast majority of time, men are observed to be employed. Excluding neither employed nor unemployed, individuals are on average employed 93.7 percent of the time. The mean unemployment duration is, however, not capturing the entire picture as most men never experienced unemployment and few have been unemployed for a very long time. Figure 1 shows that the median unemployment duration in the regression sample is zero

---

<sup>9</sup> Our final sample comprises 59,703 apprentices. This is the sample for which we have full information on all covariates and for which region\*year cells are sufficiently large to compute the rank positions. All figures and tables are based on this sample.

days, that the 75<sup>th</sup> percentile (279 days) is similar to the mean, and that the 95<sup>th</sup> percentile (1,383 days) of unemployment duration amounts to three years and nine months.

As our analysis covers a long time span, it is interesting to look for trends in unemployment risk by year of training entry. Figure 2 clearly shows a fairly stable unemployment distribution until the early 1980ies. Beginning with the entry cohort of 1983, unemployment risk increased and reached peak at the 1987 cohort. Compared to the 1975 (1982) cohort, the 1987 cohort experienced a 18 (25) percent higher mean unemployment duration, which was mostly driven by an increase at the highest percentiles. The later entry cohorts therefore seem to suffer from the bad employment prospects for West German men, in particular between 1993 and 2006. In our regression analysis, we will therefore control for entry cohorts.

The main hypotheses of our study consider the relationship between the size of the apprenticeship plant and unemployment duration. Table 2 illustrates how unemployment duration varies with the size of training plant in the final regression sample. Unemployment duration is highest for men having been trained in small plants and decreases with plant size. The unconditional difference between the lowest and the highest size category is 117 days. Graduates from large plants are 22 percentage points less likely to become ever unemployed than their counterparts from small plants and experience on average 1.4 distinct unemployment spells compared to 2.9 spells for small plant graduates. All figures decline monotonically with plant size category and we therefore find, as a stylized fact, that the size of one's training firm is inversely related to later life unemployment experience.

## **5.2. Multivariate Results**

We will regress the 15 year unemployment duration on a set of initial conditions measured at the beginning of apprenticeship training, which yields a cross-sectional data set based on 59,703 apprentices. The explanatory variable of interest is size of training plant which enters in logarithmic

form.<sup>10</sup> The vector of control variables includes individual characteristics as age, education, and training occupation. This is essentially all relevant individual-level information available in our data set. Education enters as a set of four dummies,<sup>11</sup> and age enters linearly. Sector dummies are the only plant-level control variables. It turns out that results are virtually unaffected by using 3 digit or 2 digit occupational classes instead of a simple 1 digit classification. Also 1 digit sector affiliation is sufficient and we therefore decided to use the most parsimonious specification with 1 digit occupation and sector. We condition on a set of 112 dummies reflecting the interaction of 16 cohorts and seven (aggregated) federal states.<sup>12</sup> Regions are defined at the county-level (*Kreise*) so that we have about 5,000 region\*cohort cells in our rank estimation. We will start with OLS and proxy variable regression and check the robustness of our results. Then we deal with the corner solution issue by turning to an analysis of the effects on intensive and extensive margin of unemployment and by using quantile regression.

### Ordinary Least Squares

OLS results are presented in Table 3. Column 1 shows results without controlling the ranking variable while the other four columns use different rankings. Throughout all columns, the coefficient of employer size is negative and statistically well determined. The size of the coefficient varies modestly between -4.6 and -6.9. The first column shows an increase of 0.07 unemployment

---

<sup>10</sup> We tested a number of other specifications including linear and linear-quadratic specifications as well as four dummy categories as used in Table 2. The linear-logarithmic specifications yields the lowest value of the information criteria (AIC and BIC) and has been chosen for this reason.

<sup>11</sup> The vast majority enters with completed lower or medium secondary education (92 percent). Another 3.3 percent has upper secondary education. The remainder consists of individuals with one of the two secondary school degrees and a vocational qualification. We don't know whether this is misreporting or whether these are really individuals with some sort of vocational training. By controlling for these categories we hope to avoid any biases that may stem from these observations.

<sup>12</sup> Federal states have been aggregated such that each aggregate consists of a sufficient number of counties. We therefore aggregated the states Rhineland Palatinate with Saarland, Bremen with Lower Saxony, and Hamburg with Schleswig-Holstein.

days per 1 percent increase in employer size which corresponds to a decrease of 5 days of unemployment for each doubling of plant size.<sup>13</sup>

Each ranking variable takes up values from 1 to 4, which reflects the quartiles of the size or wage residuals, respectively, within region\*cohort cells. Throughout columns two to five, the coefficients of all ranking variables have the expected negative sign and are statistically significant. The coefficient of -7.033 in column 4, for instance, means that individuals who started their training in the same year in the same federal state in a plant of the same size and sector (and conditional on further controls) are expected to differ in their unemployment experience by 7 days if their training plants are at neighboring quartiles of the *local* plant-level wage distribution.<sup>14</sup> Hence, these figures support our hypothesis of the existence of a local rank-order tournament by plant-level wages. Column 5 applies a ranking based on the residuals from equation 4 and therefore assumes that workers first choose their sector and then look for the highest-paying local plants in that sector. While the overall picture remains, the ranking coefficient is now -10.4. Without pushing the difference to column 4 too far, the more pronounced impact of the local ranking after conditioning on sector lets us conclude that many young workers first select sectors and then plants.

The coefficients in columns 2 and 3 can be interpreted analogously but have additional interesting implications. First, the fact that the position in the local size distribution matters conditional on plant size shows that there is a *local* competition for training places. Second, the fact that plant size matters after controlling for the success in the local tournament means that individuals can improve their outcomes by moving to better regions. For instance, results in column 3 imply that being in the next highest quarter of the local size distribution is worth the same as being in a plant that is 3.4 times larger *ceteris paribus*.<sup>15</sup> Put it differently, young workers who would like to have the unemployment risk associated with climbing up one quarter in the local size distribution may

---

<sup>13</sup> I.e.  $-7 \cdot \log(2/1) = -7 \cdot 0.69 \approx -5$

<sup>14</sup> Remember that being in the, say, third quartile of the local distribution of a certain region\*cohort cell must be no means correspond to a higher plant-level wage compared to being at the second quartile of another region\*cohort cell.

<sup>15</sup> With  $\log(x/1) = -6.407 / -5.193 = 1.238$  and  $x = \exp(1.238) = 3.4$ .



achieve this by moving to a region where plants are larger by the factor 3.4. To gauge the relative importance of plant size versus local ranking, we take a look at the sample distribution of mean plant size of training firms at the region level.<sup>16</sup> It turns out that young workers can achieve the above mentioned factor 3.4 in plant size by, e.g., moving from a region at the 15<sup>th</sup> percentile to the median region or from the median region to the 85<sup>th</sup> percentile. In our eyes, this shows that the local ranking is quite important and that a young worker who makes it to the top of the local distribution can offset regional disadvantages to a considerable extent. However, it also shows that regional size differences are such large that young workers can actually help their good luck along by moving to a region with larger firms.

In sum, our main results are:

1. an individual's position in the local ranking (size and wage) is important, which points at the existence of local rank-order tournaments and
2. conditional on the local ranking, training firm size is important for the long run unemployment exposure of former apprentices.

The much higher incidence of plant closure within the group of small plants (Fackler et al. 2013) is one potential transmission channel for the effect of size of training plant on long-run unemployment duration, which has little to do with training strategies. We know the last year the plant is observed in the data and generate a closure dummy being 1 if the training plant closes within 21 years after the apprentice first entered.<sup>17</sup> Conditioning on this dummy, our estimate for the size variable in equation 1 increases to -5.2 but is still highly significant with a t-value of 4.6.<sup>18</sup> Adding the same proxy as in column 3 (5) of table 3, the estimate for the size coefficient goes up to -3.7 (-3.3), while the coefficient of the ranking is barely affected. Of course, the coefficient of the closure dummy is

---

<sup>16</sup> Looking at the cohort\*region level distribution would be first best. However, some of these cells are too small to give distributional characteristics a meaningful interpretation. In considering the distribution at the region level, we simplify matters by assuming that plant size is roughly stable at the region level.

<sup>17</sup> We choose 21 years because this is the sum of a 3 year apprenticeship plus our 15 year exposure duration and the 3 year gap after graduation that we impose before counting unemployment days.

<sup>18</sup> Results are available upon request.

always highly significant and indicates an increase in the employment duration by 34 days if the plant closes. Overall, controlling for closure mutes the size effect but leaves the ability effect unchanged.<sup>19</sup>

### **Dealing with Corner Solutions**

As shown in Figure 1, long-run unemployment duration is zero for half of the men in our sample. Following Wooldridge (2002: 517), we treat this as a corner solution outcome instead of censoring. Hence, we consider zeros as observed outcomes and not as a result of censoring of some latent concept of unemployment duration and deal with it employing Cragg's (1971) Two Part Model and conditional quantile regressions (Koenker and Basset 1978), respectively.

While OLS and the Cragg model recover effects on conditional means, quantile regression estimates effects on conditional quantiles. In our study, higher quantiles, such as the 75<sup>th</sup> percentile, are not affected by excess zeros. It turns out that quantile estimates based using the size (wage) ranking with sector controls are more pronounced than OLS effects. At the 75<sup>th</sup> percentile and using the size ranking, log plant size has a coefficient (standard error) of -15.23 (1.582) and the ranking coefficient is -7.930 (3.380). With the wage ranking, log plant size has a coefficient (standard error) of -15.77 (1.292) and the ranking coefficient is -11.759 (2.263).<sup>20</sup> Hence, compared to the corresponding OLS results in table 3, the ranking coefficient changes only mildly but the size coefficient is about tripled. The main result, however, is that both plant size and ranking still have highly significant negative effects on unemployment duration.

If we assume independency of explanatory variables and the error term and normally distributed errors, the conditional expectation of  $y$  is the product of the probability of a positive  $y$  and the conditional expectation of  $y$  given  $y$  is positive:  $E(y|x) = P(y > 0|x) \cdot E(y|x, y > 0)$ . Both  $P(y > 0|x)$  and  $E(y|x, y > 0)$  are interesting quantities in our study. The first is the conditional

---

<sup>19</sup> The latter is interesting in its own right as it suggests that there is no ability sorting of young workers with respect to future plant closure.

<sup>20</sup> Results are available upon request from the authors.

probability of ever becoming unemployed, i.e. the extensive margin of unemployment. The second is the intensity of unemployment exposure given unemployment, which is the intensive margin. Both quantities can be computed after estimating a Tobit model. Note, however, that the Tobit is very restrictive in several ways. First, it is inconsistent if errors are non-normal or heteroskedastic. Second, it restricts extensive and intensive margin to be driven by the same mechanism (i.e. the same vector of explanatory variables) and, importantly, effects on both margins have to have the same sign.

Cragg's (1971) Two Part Model overcomes these issues.<sup>21</sup> It consists of two separate regressions for extensive and intensive margin and both regressions generate distinct coefficient vectors. What is more, homoskedasticity and normality in the error are not necessary for consistency of the model. We estimate a Probit model for the extensive margin and a linear model for the intensive margin and report results in Table 4.

Columns 3 to 6 of Table 4 show that a better ranking decreases both the risk of becoming ever unemployed and the number of days in unemployment if having ever been unemployed. This is reassuring as opposite results would cast doubt on whether the ranking really measures apprentice quality. However, the size ranking loses statistical significance in the two part model. The probit results (columns 3 and 5) demonstrate that, independently of the ranking used, the probability of ever becoming unemployed decreases with the size of the training firm, which corresponds to our descriptive evidence. The effect is substantial: each doubling of firm size yields a reduction in the risk of ever becoming unemployed during the observation window by 1.5 percentage points.<sup>22</sup>

Turning to men that have been unemployed for at least one day, we see a completely reversed picture. Once unemployed, doubling of plant size results in ten *additional* days in unemployment and this does not depend on which ranking is used.<sup>23</sup> Technically, this can be either due to a higher

---

<sup>21</sup> For a textbook treatment of the method see e.g. Cameron and Trivedi (2005).

<sup>22</sup> Not surprisingly, the effect at the extensive margin is closer to zero when conditioning on the year of plant closure. It, however, changes only modestly and remains statistically significant. Results are available upon request.

<sup>23</sup> As expected, conditioning on plant closure leaves the effect at the intensive margin unaffected.

amount of subsequent unemployment spells or due to a longer duration within unemployment. Results in Table 5 indicate that for men being unemployed at least once, plant size reduces the number of unemployment spells but increases the length of the average spell. The latter can have different reasons. It could simply be that men from large training plants stay unemployed longer because their on average higher wages also yield higher unemployment benefits. Alternatively, they may have to search longer in order to arrive at a new employer offering the same wage (or working conditions). This might be due to few job openings for high-wage workers, e.g., because a lot of firm-specific human capital is required in most positions and that's why they are typically filled with former in-house apprentices. For men separating from a large employer, their high amount of firm specific capital might thus be an obstacle to get a new, similar job. Taking into account the negative effect on the number of spells, another plausible interpretation is that men trained in larger plants and becoming displaced search longer for new jobs *and* find better matches.

## **6. Discussion and Implications**

We use a large administrative data set that follows graduated apprentices during their working life and show that training in large and medium-sized firms is associated with considerably less long-run unemployment exposure. These findings, however, may simply be the result of sorting processes: Larger training plants with higher wage levels attract and choose the most able young workers. Therefore we use a proxy for ability to estimate and control for the impact of ability on long-run unemployment. We assume that rank order tournaments for the most attractive training positions take place and take into account an institutional peculiarity of the German training system, the empirically observable regional immobility of apprentices. Accordingly, we can use a region- and cohort specific ranking based on training plants' size and median wages to proxy for apprentices' ability.

Our main results are that the negative association between training plant size and cumulated unemployment exposure is muted but still statistically well determined even after we control for the

rank of an individual's training firm in the local plant size distribution and the local wage distribution and that the rank itself is a predictor for cumulated unemployment exposure. The fact that the position in the local size distribution matters conditional on plant size shows that there is a *local* competition for training places. The fact that plant size matters after controlling for the success in the local tournament means that individuals can improve their outcomes by moving to better regions. Our results therefore imply that luck plays a role, too: Young workers with a certain ability have a lower risk of unemployment if they live in regions with more attractive training positions. This is the result of the regional immobility of German apprentices. The other way around: Young workers who are regional mobile can in this way reduce their risk of unemployment during working life. Interpreting the ranking as ability proxy, we can say that the ability of young workers plays a role for the risk of unemployment during working life and that ability-based sorting processes already take place during the transition from school to apprenticeship. This complements research on sorting processes that typically look at sorting later in working life (e.g. Card et al. 2013).

We show that mobility may reduce unemployment risk and this implies that lacking mobility increases aggregate unemployment. Consider the case that in some regions attractive apprenticeship positions with good employment prospects are offered but not filled while in other regions worse positions are filled. Abstracting from general equilibrium effects, mobility of those taking up the bad positions reduces aggregate unemployment. This problem can be mitigated by supporting regional mobility of young workers, e.g. by informing them better about existing mobility subsidies and dormitories for apprentices and by creating additional mobility incentives. As the decreasing number of young individuals in Germany and their increased enrollment in tertiary education reduces the pool of applicants for apprenticeship considerably, the shortage of suitable applicants and the problem of vacancies for good training positions are going to be of increasing relevance. Given the traditionally very important role of highly specialized and trained workers for the German model of capitalism, this issue should receive additional public and scientific attention.

We are aware of several shortcomings of our work. First, there are many ways to conduct our proxy variable approach. Local tournaments could take place within larger regional entities, individuals could first decide on their desired occupation and then enter the tournament, or tournaments could have other determinants than wages or firm size. Second, while our data has several strengths, it also lacks potentially important covariates comprising for instance information on the socio-economic background of young workers. Third, the nature of our analysis makes it necessary that we look at apprentice cohorts from the 1970ies and 80ies and it is not clear that our results hold for the most recent cohorts. We think that future research should take into account recent developments and should try to figure out whether shifts in apprentice supply and demand affect the impact of training firms and mobility. Retesting our results using different data with more background information could also be a useful exercise.

## References

- Abowd, John, Kramarz, Francis, and Margolis, David. 1999. High wage workers and high wage firms. *Econometrica*, 67 (2): 411-45.
- Acemoglu, Daron and Pischke, Jörn-Steffen. 1998. Why do firms train? Theory and evidence. *Quarterly Journal of Economics*, 113 (1): 79-119.
- Barron, John M., Black, Dan A., and Loewenstein, Mark A. 1987. Employer size: The implications for search, training, capital investment, starting wages, and wage growth, *Journal of Labor Economics*, 5 (1): 76-89.
- Bell, David N.F. and Blanchflower, David G. 2011. Young people and the Great Recession. *Oxford Review of Economic Policy*, 27 (2): 241-267.
- Belman, Dale and Levine, David I. 2004. Size, skill, and sorting. *Labour* 18 (4): 515-561.
- Biehler, Hermann and Brandes, Wolfgang. 1981. *Arbeitsmarktsegmentation in der Bundesrepublik Deutschland: Theorie und Empirie des dreigeteilten Arbeitsmarktes*. Frankfurt/Main, New York: Campus-Verlag.
- Blossfeld, Hans-Peter and Mayer, Karl Ulrich. 1988. Republic of Germany: An empirical study of segmentation theories from a life course perspective. *European Sociological Review*, 4 (2): 123-140.
- Cameron, A. Colin and Trivedi, Pravin K. 2005. *Microeconometrics: methods and applications*. Cambridge university press.
- Card, David. 1999. The causal effect of education on earnings. In: Orley Ashenfelter, David Card (eds.). *Handbook of labor economics*, Volume 3A: 1801-1863. Amsterdam: North-Holland.
- Card, David. 2001. Estimating the return to schooling: Progress on some persistent econometric problems. *Econometrica*, 69 (5): 1127-1160.
- Card, David, Heining, Jörg, and Kline, Patrick. 2013. Workplace heterogeneity and the rise of West German wage inequality. *Quarterly Journal of Economics*, 128 (3): 967-1015.
- Carneiro, Pedro and Heckman, James J. 2003. Human capital policy, IZA Discussion paper series, No. 821.
- Cragg, John G. 1971. Some statistical models for limited dependent variables with application to the demand for durable goods. *Econometrica*, 39 (5): 829-844.
- Cramer, Ulrich and Koller, Martin. 1988. Gewinne und Verluste von Arbeitsplätzen in Betrieben. Der "Job-Turnover"-Ansatz. *Mitteilungen aus der Arbeitsmarkt und Berufsforschung*, 21 (3): 361-377.
- Cunha, Flavio and Heckman, James J. 2007. The technology of skill formation. *The American Economic Review*, 97 (2): 31-47.

- Cunha, Flavio and Heckman, James J. 2008. Formulating, identifying and estimating the technology of cognitive and noncognitive skill formation. *Journal of Human Resources*, 43 (4): 738-782.
- Ellwood, David T. 1982. Teenage unemployment: Permanent scars or temporary blemishes. In: Richard B. Freeman and David A. Wise, (eds.). *The youth labor market problem: Its nature, causes, and consequences*: 349-390. Cambridge: NBER Books.
- Fackler, Daniel, Schnabel, Claus, and Wagner, Joachim. 2013. Establishment exits in Germany: The role of size and age. *Small Business Economics*, 41 (3): 683-700.
- Foster, Lucia, Haltiwanger John, and Syverson, Chad. 2008. Reallocation, firm turnover, and efficiency: Selection on productivity or profitability? *The American Economic Review*, 98 (1): 394-425.
- Fougère, Denis and Schwerdt, Wolfgang. 2002. Are apprentices productive? *Konjunkturpolitik*, 48 (3-4): 317-346.
- Franz, Wolfgang and Zimmermann, Volker. 2002. The transition from apprenticeship training to work. *International Journal of Manpower*, 23 (5): 411-425.
- Garen, John E. 1985. Worker heterogeneity, job screening, and firm size. *Journal of Political Economy*, 93 (4): 715-739.
- Göggel Kathrin and Zwick, Thomas. 2012. Heterogeneous wage effects of apprenticeship training. *The Scandinavian Journal of Economics*, 114 (3): 756-779.
- Gregg, Paul. 2001. The impact of youth unemployment on adult unemployment in the NCDS. *The Economic Journal*, 111 (475): 626-653.
- Heckman, James J., Stixrud, Jora, and Urzua, Sergio. 2006. The effects of cognitive and noncognitive abilities on labor market outcomes and social behavior. *Journal of Labor Economics*, 24 (3): 411-482.
- Hoxby, Caroline M. 2003a. School choice and school competition: Evidence from the United States. *Swedish Economic Policy Review*, 10 (3): 9-65.
- Hoxby, Caroline M., (ed.). 2003b. *The Economics of School Choice*, Chicago: University of Chicago Press.
- Idson, Todd L. and Oi, Walter Y. 1999. Workers are more productive in large firms. *The American Economic Review*, 89 (2), Papers and Proceedings: 104-108.
- Koenker, Roger and Bassett Jr, Gilbert. 1978. Regression quantiles. *Econometrica*, 46 (1): 33-50.
- Lazear, Edward P. and Rosen, Sherwin. 1981. Rank- order tournaments as optimum labor contracts. *Journal of Political Economy*, 89 (5): 841-864.
- Lindley, Robert M. 1975. The demand for apprentice recruits by the engineering industry, 1951-71. *Scottish Journal of Political Economy*, 22 (1): 1-24.



- Lutz, Burkhard, and Sengenberger, Werner. 1974. *Arbeitsmarktstrukturen und öffentliche Arbeitsmarktpolitik. Eine kritische Analyse von Zielen und Instrumenten*. Göttingen: Verlag Otto Schwartz & Co.
- Mroz, Thomas and Savage, Timothy. 2006. The long-term effects of youth unemployment. *Journal of Human Resources*, 41 (2): 259-293.
- Neubäumer, Renate. 1999. *Der Ausbildungsstellenmarkt der Bundesrepublik Deutschland. Eine theoretische und empirische Analyse*. Berlin: Duncker & Humblot.
- Osterman, Paul. 2011. Institutional labor economics, the new personnel economic and internal labor markets: A reconsideration: *Industrial and Labor Relations Review*, 64 (4): 635-651.
- Reich, Michael, (ed.). 2008. *Segmented labor markets and labor mobility*. Cheltenham/Northampton: Edward Elgar.
- Reich, Michael, Gordon, David M., and Edwards, Richard. 1973. Dual labor markets. A theory of labor market segmentation. *The American Economic Review*, 63 (2): 359-365.
- Ryan, Paul. 2001. The school-to-work transition: A cross-national perspective. *Journal of Economic Literature*, 39 (1): 34-92.
- Schmillen, Achim and Umkehrer, Matthias. 2013. The scars of youth. Effects of early-career unemployment on future unemployment experience. IAB Discussion Paper 6/2013. Nuerenberg: Research Institute of the German Federal Employment Agency.
- Sengenberger, Werner. 1987. *Struktur und Funktionsweise von Arbeitsmärkten: die Bundesrepublik Deutschland im internationalen Vergleich*. Frankfurt/Main, New York: Campus Verlag.
- Somaggio, Gabriele. 2009. *Start mit Hindernissen. Eine theoretische und empirische Analyse der Ursachen der Arbeitslosigkeit nach der dualen Berufsausbildung*. New York, Frankfurt am Main: Peter Lang.
- Soskice, David. 1994. Reconciling Markets and Institutions: The German apprenticeship system. In: Lisa M. Lynch, (ed.). *Training and the private sector: International comparisons*: 25-60. Chicago: University of Chicago Press.
- Szydlik, Marc. 1990. *Die Segmentierung des Arbeitsmarktes in der Bundesrepublik Deutschland. Eine empirische Analyse mit Daten des Sozio-ökonomischen Panels, 1984-1988*. Berlin: edition sigma.
- Thurow, Lester C. 1975. *Generating inequality: Mechanisms of distribution in the U.S. economy*. New York: Basic Books.
- Toft, Christian. 2004. *Essays on segmentation, cross-national variation and European Union regulation*. Kassel: kassel university press.
- von Wachter, Till and Bender, Stefan. 2006. In the right place at the wrong time – the role of firms and luck in young workers' careers. *The American Economic Review*, 96 (5): 1679-1705.

- Wenger, Helmut. 1984. *Segmentation am Arbeitsmarkt und Arbeitslosigkeit*. Frankfurt/New York: Campus Verlag.
- Windolf, Paul and Hohn, Hans-Willy. 1984. *Arbeitsmarktchancen in der Krise: Betriebliche Rekrutierung und soziale Schließung. Eine empirische Untersuchung*. Frankfurt/Main, New York: Campus-Verlag.
- Wolf, Klaus, Langhagen-Rohrbach, Christian, Haberstroh Michael, Stylau, Annette, and Theis, Alexander. 2004. Regionale Mobilität jugendlicher Auszubildender: Untersuchung zum Einfluss der Mobilität auf das Lehrstellensuch- und -wahlverhalten von Jugendlichen in Hessen. *ABF aktuell – Arbeitsmarkt- und Berufsforschung* 10.9.2004 (<http://doku.iab.de/externe/2005/k051110f04.pdf>).
- Wooldridge, Jeffrey M. 1995. Score diagnostics for linear models estimated by two stage least squares. In: G. S Maddala, P. C. B. Phillips, and T. N. Srinivasan, (eds.). *Advances in econometrics and quantitative economics: Essays in honor of Professor C. R. Rao*: 66-87. Oxford: Blackwell.
- Wooldridge, Jeffrey M. 2002. *Econometric analysis of cross section and panel data*. Cambridge, MA: MIT press.

**Table 1: Summary Statistics on Labor Market States**

	Employed	Unemployed	Neither employed nor unemployed	Total
Duration in Days	3991.5	269.1	1218.4	5479.0
In percent	72.9	4.9	22.2	100.0
In percent excluding Neither employed nor unemployed	93.7	6.3		100.0
Number of Spells	3.62	2.27	2.62	8.51
Average Spell Duration	1102.6	118.5	465.0	643.8

**Table 2: 15-year Unemployment Experience by Size of Training Firm**

Employer Size	Individuals	Mean	Ever Unemployed	# of UE Spells
<10	13,952	318.5	.573	2.92
10-49	16,830	295.0	.528	2.61
50-499	15,967	253.8	.444	2.02
>= 500	12,954	201.0	.352	1.43
Total	59,703	269.1	.478	2.27

**Table 3: Main Specification**

	1	2	3	4	5
log(size)	-6.904*** (1.126)	-4.637*** (1.669)	-5.193*** (1.342)	-5.742*** (1.216)	-4.958*** (1.246)
Size ranking w/o controls	---	-6.068* (3.523)	---	---	---
Size ranking conditional on sector	---	---	-6.407* (3.359)	---	---
Wage ranking w/o controls	---	---	---	-7.033*** (2.593)	---
Wage ranking conditional on sector	---	---	---	---	-10.301*** (2.538)

Notes: Apprenticeship cohorts 1975-1990, 59,703 observations (individuals). Robust standard errors in parentheses, \*, \*\*, \*\*\* denoting statistical significance at the 10; 5; 1 percent level, respectively. Regressions always include dummies for 1dig sector and occupation, 4 school degree dummies, age at begin of apprenticeship training, and cohort\*state fixed effects. The ranking takes up values from 1 to 4 reflecting the quartiles of the size or wage residual, respectively, within region\*cohort cells.

**Table 4: Two Part Model**

	Probit Extensive Margin	OLS Intensive Margin	Probit Extensive Margin	OLS Intensive Margin	Probit Extensive Margin	OLS Intensive Margin
log(size)	-.023*** (.001)	11.63*** (2.270)	-.022*** (.001)	14.04*** (2.499)	-.022*** (.001)	14.04*** (2.450)
Size ranking conditional on sector	--- (---)	--- (---)	-.001 (.003)	-10.03 (6.201)	--- (---)	--- (---)
Wage ranking conditional on sector	--- (---)	--- (---)	--- (---)	--- (---)	-.007*** (.002)	-11.73*** (4.291)

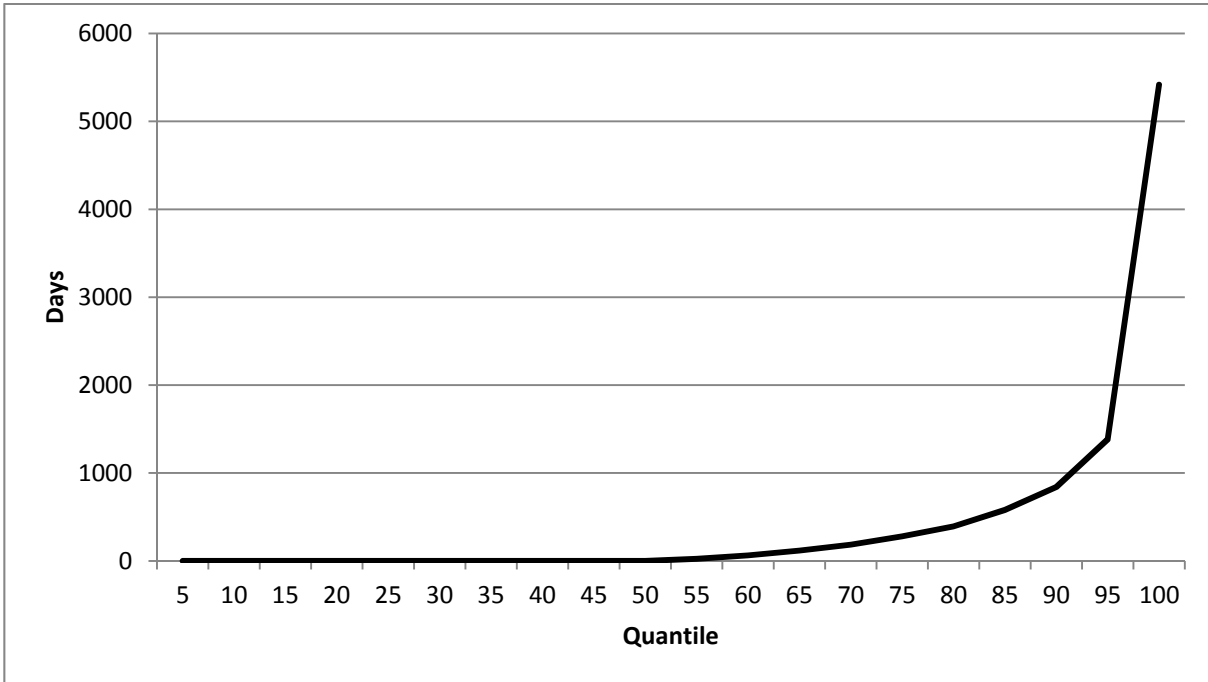
Notes: Apprenticeship graduation cohorts 1977-1992. Marginal effects at the mean of the covariates are reported for the Probit regression. Robust standard errors in parentheses, \*, \*\*, \*\*\* denoting statistical significance at the 10; 5; 1 percent level, respectively. Regressions always include dummies for 1dig sector and occupation, 4 school degree dummies, age at begin of apprenticeship training, and cohort\*state fixed effects. The ranking takes up values from 1 to 4 reflecting the quartiles of the size or wage residual, respectively, within region\*cohort cells.

**Table 5: Number of Spells and Average Spell Length Conditional on Ever Unemployed**

	Number of Spells	Avg. Spell Length	Number of Spells	Avg. Spell Length
log(size)	--- (---)	--- (---)	-.0458*** (.016)	5.684*** (.691)
Size ranking conditional on sector	--- (---)	--- (---)	--- (---)	--- (---)
Wage ranking conditional on sector	--- (---)	--- (---)	-.0328 (.030)	-1.325 (1.008)

Notes: Apprenticeship cohorts 1975-1990, 28,545 observations (individuals). Robust standard errors in parentheses, \*, \*\*, \*\*\* denoting statistical significance at the 10; 5; 1 percent level, respectively. Regressions always include dummies for 1dig sector and occupation, 4 school degree dummies, age at begin of apprenticeship training, and cohort\*state fixed effects. The ranking takes up values from 1 to 4 reflecting the quartiles of the size or wage residual, respectively, within region\*cohort cells.

**Figure 1: Quantile Function of Unemployment Duration**



**Figure 2: Changes in Unemployment Duration by Training Entry Cohort relative to 1975**

