

Gaspar, Vitor; Pérez Quirós, Gabriel; Rodríguez Mendizábal, Hugo

Working Paper

Interest rate determination in the interbank market

ECB Working Paper, No. 351

Provided in Cooperation with:

European Central Bank (ECB)

Suggested Citation: Gaspar, Vitor; Pérez Quirós, Gabriel; Rodríguez Mendizábal, Hugo (2004) : Interest rate determination in the interbank market, ECB Working Paper, No. 351, European Central Bank (ECB), Frankfurt a. M.

This Version is available at:

<https://hdl.handle.net/10419/152785>

Standard-Nutzungsbedingungen:

Die Dokumente auf EconStor dürfen zu eigenen wissenschaftlichen Zwecken und zum Privatgebrauch gespeichert und kopiert werden.

Sie dürfen die Dokumente nicht für öffentliche oder kommerzielle Zwecke vervielfältigen, öffentlich ausstellen, öffentlich zugänglich machen, vertreiben oder anderweitig nutzen.

Sofern die Verfasser die Dokumente unter Open-Content-Lizenzen (insbesondere CC-Lizenzen) zur Verfügung gestellt haben sollten, gelten abweichend von diesen Nutzungsbedingungen die in der dort genannten Lizenz gewährten Nutzungsrechte.

Terms of use:

Documents in EconStor may be saved and copied for your personal and scholarly purposes.

You are not to copy documents for public or commercial purposes, to exhibit the documents publicly, to make them publicly available on the internet, or to distribute or otherwise use the documents in public.

If the documents have been made available under an Open Content Licence (especially Creative Commons Licences), you may exercise further usage rights as specified in the indicated licence.



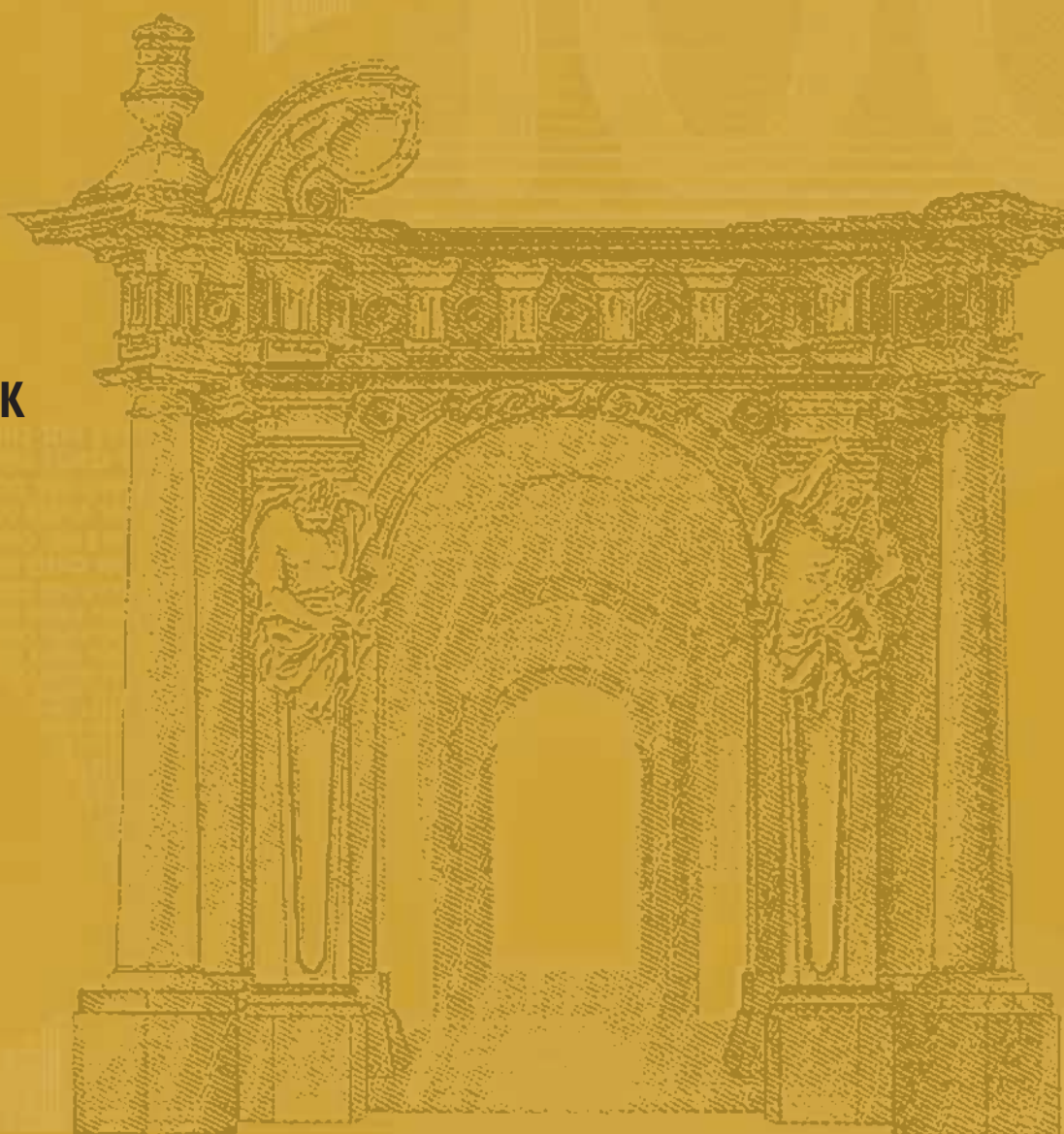
EUROPEAN CENTRAL BANK

WORKING PAPER SERIES

NO. 351 / APRIL 2004

INTEREST RATE DETERMINATION IN THE INTERBANK MARKET

by Vitor Gaspar
Gabriel Pérez Quirós and
Hugo Rodríguez Mendizábal





EUROPEAN CENTRAL BANK

WORKING PAPER SERIES

NO. 351 / APRIL 2004

INTEREST RATE DETERMINATION IN THE INTERBANK MARKET¹

by Vítor Gaspar²

Gabriel Pérez Quirós³ and

Hugo Rodríguez Mendizábal⁴



In 2004 all
publications
will carry
a motif taken
from the
€100 banknote.

This paper can be downloaded without charge from
<http://www.ecb.int> or from the Social Science Research Network
electronic library at http://ssrn.com/abstract_id=533013.

¹ The views expressed are authors' own and do not necessarily reflect those of the ECB, the Bank of Spain or the Eurosystem. We thank the anonymous referee, H-J Klockers, Fernando Restoy, Ulrich Bindseil and seminar participants at the Bank of Spain, ECB, Centra and University of Alicante for helpful comments and suggestions. We also thank the European Banking Federation for graciously sharing their data. Rodríguez Mendizábal acknowledges financial support from the Spanish Ministry of Science and Technology through grant SEC2000-0684 and SEC2003-0036 and from the Barcelona Economics Program of CREA.

² European Central Bank

³ Banco de España and CEPR

⁴ Universitat Autònoma de Barcelona and CENTRA

© European Central Bank, 2004

Address

Kaiserstrasse 29
60311 Frankfurt am Main, Germany

Postal address

Postfach 16 03 19
60066 Frankfurt am Main, Germany

Telephone

+49 69 1344 0

Internet

<http://www.ecb.int>

Fax

+49 69 1344 6000

Telex

411 144 ecb d

All rights reserved.

Reproduction for educational and non-commercial purposes is permitted provided that the source is acknowledged.

The views expressed in this paper do not necessarily reflect those of the European Central Bank.

The statement of purpose for the ECB Working Paper Series is available from the ECB website, <http://www.ecb.int>.

ISSN 1561-0810 (print)

ISSN 1725-2806 (online)

CONTENTS

Abstract	4
Non-technical summary	5
1. Introduction	7
2. The theoretical model	11
3. Solution of the model	15
3.1 The last day of the reserve maintenance period (T)	15
3.2 Days before the last ($t < T$)	17
4. Simulations	19
5. Description of the data	23
6. Some properties of the data	24
7. Time series and cross section volatility	26
8. Conclusions	29
References	31
Tables and figures	33
European Central Bank working paper series	40

Abstract

The purpose of this paper is to study the determinants of equilibrium in the market for daily funds. We use the EONIA panel database which includes daily information on the lending rates applied by contributing commercial banks. The data clearly shows an increase in both the time series volatility and the cross section dispersion of rates towards the end of the reserve maintenance period. These increases are highly correlated. With respect to quantities, we find that the volume of trade as well as the use of the standing facilities are also larger at the end of the maintenance period. Our theoretical model shows how the operational framework of monetary policy causes a reduction in the elasticity of the supply of funds by banks throughout the reserve maintenance period. This reduction in the elasticity together with market segmentation and heterogeneity are able to generate distributions for the interest rates and quantities traded with the same properties as in the data.

JEL Classification: E52, E58

Keywords: Overnight interest rate; Monetary policy instruments; Eonia panel

NON-TECHNICAL SUMMARY

This paper studies equilibrium in the daily funds market using a model in the tradition of Poole (1968). The crucial element in this class of models is the assumption that banks do not know their end-of-day position, with perfect accuracy, at the time they trade in the money market. The assumption reflects the fact that banks have imperfect monitoring systems. The model is set-up to incorporate realistic features of the money market in the euro area. For example it explicitly considers a system of required reserves with an averaging provision. This feature of the Eurosystem's operational framework implies that the elasticity of the net supply of reserves by banks goes down over the reserve maintenance period. Novel features of the model are the consideration of heterogeneity across banks and market segmentation. Specifically we consider the extreme cases of perfect competition and autarchy. We also consider intermediate cases in which we partition banks into market groups of varying sizes. This allows for the derivation of distributions for the interest rates across banks and also for quantities traded.

The model makes use of a number of strong simplifying assumptions. It is a partial equilibrium model focusing on the money market alone. The dependence of the excess supply of daily funds from other activities carried out by banks is not modelled explicitly. Risk neutrality is assumed. The effects of capitalisation within the reserve maintenance period are ignored. All these simplifying assumptions are unrealistic. They make it harder for the model to reproduce empirical evidence.

In the paper we make use of the EONIA panel database, kindly made available by the European Banking Federation (EBF). The database includes daily information on the lending rates for operations involving contributing banks. The sample includes 64 banks and the period covered goes from 4 January 1999 to 9 November 2002. Interest rates correspond to actual trades. The data clearly shows an increase in the average time series volatility and cross section dispersion towards the end of the reserve maintenance period. These increases are highly correlated. The correlation stays strong even after controlling for the influence of variables that explain the joint behaviour of time series volatility and cross-section dispersion. A number of such variables were identified by Perez-Quiros and Rodriguez-Mendizabal (2003) and include the beginning and the end of the reserve maintenance period, the dates of meetings of the ECB's Governing Council and the end-of-the month. We argue that

this finding provides strong support for the theoretical model (with market groups) since the model predicts that liquidity shocks move volatility and dispersion of interest rates exactly in line with the pattern found in the data. Moreover quantities traded and the use of standing facilities also increase at the end of the reserve maintenance period also in line with the theory.

1. INTRODUCTION

The purpose of this paper is to study the determinants of equilibrium in the market for daily funds. Understanding the behaviour of the overnight market for unsecured loans is important both from a policy as well as from a research point of view. The basic reason is that this market hosts the first step in the monetary transmission mechanism. There is a long literature analysing this mechanism, that is, the process by which central banks are able to affect their ultimate goals of policy through changes in policy instruments under this context. However, most of the papers in this literature simplify matters by assuming central banks have direct control of a short-term interest rate [see, for example, Taylor (1999) or McCallum (1999)]. Here, we construct a theoretical model of the money market to explicitly analyse *how* this control is actually exerted.

There are several issues we address with this model. First, we look at the linkages between the statistical properties of the equilibrium in the overnight market and the operational framework of monetary policy. We see this as a necessary step in order to address questions about the effects of changes in the design of the central banks' operational framework. Relevant features include reserve requirements, length of reserve maintenance periods, existence of standing facilities, maturities and frequency of open market operations, etc. Second, although the model cannot be estimated directly, we use a set of testable implications to take it to the data. It turns out that the model is able to reproduce the most salient features that characterise the overnight interest rates in the euro area.

Most available empirical studies on the high frequency behaviour of overnight interest rates focus on the US case. References include Campbell (1987), Lasser (1992), Rudebusch (1995), Roberds *et al.* (1996), Hamilton (1996), Balduzzi *et al.* (1997), Furfine (2000) and Bartolini, Bertola and Prati (2001, 2002). Prati, Bertola and Bartolini (2002) argue that some of the empirical facts identified for the US are no longer relevant when alternative institutional settings are considered. The case of a “corridor system” is particularly relevant. In a corridor system overnight market interest rates are bound by the existence of two standing facilities provided by the central bank, with pre-determined interest rates. A deposit facility where banks can deposit their excess clearance balances, earning a given return and a lending facility which provides access to liquidity, at a given interest rate, against the pledging of eligible collateral. Outside the US the “corridor system” has been adopted by a series of countries during the last decade, namely Australia, Canada, Denmark, the euro area, New Zealand, Sweden, and the UK. Since the start of the ECB's single monetary policy in 1999, a significant amount of research has been devoted to identifying the relevant empirical facts

characterising the euro's market for overnight funds. Relevant references include Angeloni and Bisagni (2002), Cassola and Morana (2002), and Würtz (2003). In this paper we pursue this empirical research programme further by considering lending rates charged by individual banks. To our knowledge, this is the first paper in the literature to address the determination of rates from this point of view, particularly focused in the Euro area. Specifically, we use data on individual banks to study the joint statistical distribution of overnight rates over time and over the cross section of banks.

In our research we have been able to use the EONIA panel database, kindly made available by the European Banking Federation (EBF). This database includes daily information on the lending rates applied by contributing commercial banks. The data clearly shows an increase in both the time series volatility and the cross section dispersion of rates towards the end of the reserve maintenance period. These increases are highly correlated. With respect to quantities, we find that the volume of trade as well as the use of the standing facilities are also larger at the end of the maintenance period. These facts motivate the modelling strategy in the paper.

Most of the theoretical models of daily funds market equilibrium have evolved from the early seminal contribution by Poole (1968)¹. Some of the papers in this literature are Angeloni and Prati (1996), Bartolini, Bertola and Prati (2001, 2002), Henckel, Ize and Kovanen (1999), Pérez-Quirós and Rodríguez Mendizábal (2003) and Woodford (2001). All these models share a main ingredient: the existence of a “liquidity shock” that creates uncertainty in the liquidity management of commercial banks and that we interpret in terms of imperfect information. Specifically, the idea is that commercial banks trade in the overnight funds market before they are able to determine their end-of-day balance with certainty. Furfine (2000) interprets this residual uncertainty as coming from “operational glitches, bookkeeping mistakes, or payments expected from a counterpart that fail to arrive before the closing of Fedwire”. In other words, credit institutions have less than perfect information and monitoring systems.

Usually these models are only concerned with the evolution of prices so they model representative agent economies. They are pure pricing models. However, in order to be able to explain the joint distribution of prices and quantities both in the time as well as in the cross section dimension, one needs to allow for *heterogeneity* plus some form of *market segmentation*. In this paper we provide a model with heterogeneous commercial banks subject to idiosyncratic shocks. These banks interact

¹ See also Baltensperger (1980) for a survey and references to the early literature on this subject.

with the central bank through payment systems and the operational framework of monetary policy. The model provides a stylised representation of the relevant institutional features for the euro area. Commercial banks also interact with each other through the payments mechanism and the daily funds market. A form of market segmentation will prevent efficient netting, the verification of the law of one price, and will generate a distribution of interest rates across banks. It delivers testable propositions on the behaviour of interest rates over time and across banks, use of standing facilities and amounts traded. These are the propositions we confront with the empirical evidence².

Market segmentation might look as an ad hoc proposition to model money markets, much more when banks exchange an extremely homogeneous good, reserves. However, talking with money market dealers of different private banks of the Euro area, it seems a plausible representation of the reality of money markets. The reasons usually argued by the practitioners not to have a single market are the existence of credit limits or agents playing a reputation game. According to the dealers, being short one day by a big amount is a piece of information they do not want to share with the general market. So, they prefer to pay more to settle their accounts privately with banks they usually do business with. Therefore, there are subgroups of trading banks that settle with each other before going to the general market or the standing facilities.

The design of the theoretical model is intended to replicate some of the basic features of the daily market for funds in the euro area. In doing so we try to account for the most important elements of the operational framework for monetary policy. Our economy consists of a central bank and n commercial banks. These banks exchange overnight deposits in segmented markets and are subject to liquidity shocks. Commercial banks have to maintain a given level of required reserves on average during a reserve maintenance period. As in the Eurosystem, the central bank offers two standing facilities: a lending and a deposit facility. The two standing facilities define a corridor limiting the fluctuation in the overnight rate. We show that such an environment reproduces the main features of the market for funds in the euro area. In particular, the equilibrium in the model is characterized by rates whose time series as well as cross section volatilities increase towards the end of the maintenance period and are highly correlated. Furthermore, banks trade and use the standing facilities more at the end of the maintenance period.

² Furfine (1999), as Furfine (2000), uses transaction-level data. He looks at trading patterns and networks and finds evidence on the existence of relationship banking in the interbank market. Furfine does not explicitly address the theoretical modelling of bank heterogeneity together with market segmentation.

The intuition behind these results is as follows. Every day banks face two risks. On the one hand, an unforeseen decrease in available funds may make a commercial bank use the lending facility. This is costly because the lending rate is larger than the market rate. On the other hand, in the opposite case of an unforeseen increase in available funds, a bank may fulfil reserve requirements early on during the reserve maintenance period, a case in which we say the bank is being “locked-in”. This is also costly because the marginal value of reserves accumulated beyond the requirement is the deposit rate which is smaller than the market rate. Thus, when banks determine how much funds to supply to the market on every day of the maintenance period, they will look at how their decisions affect the probability of ending the day with an overdraft as well as the probability of being “locked-in”. Given an initial amount of reserves, if banks had the same supply of funds on every day, the probability of having an overdraft would be constant over time. However, the probability of having excess reserves would get larger as we approach the last days of the maintenance period. To compensate for this latter effect, banks try to hold relatively fewer reserves on the first days of the period and relatively more towards the end so as to reduce the probability of satisfying the reserve requirement early in the period.

The adjournment in the accumulation of reserves by banks have a further implication. As the end of the maintenance period gets nearer, the ability of banks to offset past shocks decreases. This makes banks more sensitive to shocks as time passes so that the elasticity of supply becomes a decreasing function of time. Thus, at the beginning of the period the supply of funds is very elastic. Banks are basically indifferent between different holdings of reserves, so they do not have the need to compensate liquidity shocks. They trade little and the interest rates are very similar both across banks and across time. On the last days of the period, though, supplies are inelastic so that shocks late in the period will have a larger effect on prices. Introducing market segmentation in this setting makes the cross section as well as the average across banks become more volatile towards the end of the reserve maintenance period. Furthermore, trade is also larger on the last days of the period as banks try to get their desired level of reserves. This larger trade happens both between banks and with the central bank through the use of the standing facilities.

The paper is structured as follows. In Section 2, we introduce the theoretical model. In Section 3 we solve the model and present the expressions that determine the demand for funds on each day of the maintenance period. Because the model cannot be solved explicitly, in Section 4 we perform numerical simulations in order to illustrate the properties of the model. Section 5 contains a description of the data set, which includes the daily contributions from individual banks used to compute the EONIA rate. The properties of the data are examined in Section 6. In Section 7 we

model the time-series and cross-section behaviour of interest rates in the daily funds market in a systematic way. Finally, Section 8 concludes.

2. THE THEORETICAL MODEL

In the model we consider n commercial banks and one monetary authority, the central bank. Commercial banks maintain deposits, called current accounts, with the central bank in order to fulfil reserve requirements and payments responsibilities. The operational framework of the central bank is composed of two elements. The first one refers to certain restrictions on the current accounts held by commercial banks. Reserve balances of commercial banks cannot be negative by the end of each trading session and the accumulated balance over each reserve maintenance period has to be large enough to meet required reserves, that is, it cannot be smaller than a number $R > 0$. This number R corresponds to the level of required reserves and is pre-determined. The reserve maintenance period has a length of T days. The second element consists of two standing facilities provided by the central bank. There is a lending facility where banks can borrow funds at the interest rate i^l and a deposit facility where banks can deposit funds at the rate i^d . These facilities are always available to commercial banks.

The main decision each bank has to make on every day is to determine how much funds to trade on the money market. In deciding the amounts to borrow or lend in any session, banks take into account their reserve position. The position of bank $j = \{1, 2, \dots, n\}$ is summarised by its current account with the central bank at the time it reaches the market on day t , a_t^j , and the amount of reserves the bank has to accumulate from session t until session T to satisfy its reserve requirement, also known as its deficiency, d_t^j ³. Assume that all banks start day 1 being identical, that is, $d_1^j = D_1 = R$ and $a_1^j = A_1$. The pair $s_t^j = (d_t^j, a_t^j)$ defines the individual state of a bank on any particular session.

In every session, banks are subject to shocks. In the general description of the model we distinguish between pre-trade shocks (ε_t^j), that is, shocks that arise early in session t , before bank j exchanges

³ In general, lower case letters refer to individual banks while capital letters refer to per capita market aggregates.



funds in the market, and post-trade shocks (λ_t^j), which represent late shocks that arise after trade takes place. We restrict these shocks to be i.i.d. across time. They follow the distributions:

$$\varepsilon_t^j \sim F_\varepsilon(\mu_\varepsilon^j, \sigma_\varepsilon^j)$$

and

$$\lambda_t^j \sim F_\lambda(\mu_\lambda^j, \sigma_\lambda^j),$$

where μ_i^j is the mean of the shock $i = \varepsilon, \lambda$ for bank j and σ_i^j is its standard deviation. Notice shocks are assumed to follow distributions that may differ across banks and not necessarily independent among them.

The timing of events between two sessions is as follows: consider a bank, say j , that is about to enter the market on day t . The bank has a deficiency d_t^j and an account balance of a_t^j . Let m_t^j and b_t^j be the amount of reserves kept by this bank and the ones loaned out to the market at session t , respectively. These magnitudes have to satisfy

$$m_t^j + b_t^j = a_t^j \quad (1)$$

and

$$m_t^j \geq 0. \quad (2)$$

After the bank leaves the market, it receives the late shock (λ_t^j), so the balance at the end of the day in bank j 's current account is

$$r_t^j = m_t^j + \lambda_t^j.$$

The following day, the bank receives an early morning shock (ε_{t+1}^j), so tomorrow's balance at the central bank by the time bank j goes again to the market is

$$a_{t+1}^j = a_t^j + \lambda_t^j + \varepsilon_{t+1}^j. \quad (3)$$

Notice that any reserves exchanged on any day have to be returned the following day. Additionally, we make the simplifying assumption that interest payments on borrowing and lending are not capitalised. Reserve deficiencies, d_t^j , evolve over time as

$$d_{t+1}^j = \max\{0, d_t^j - \max[0, r_t^j]\}, \quad (4)$$

for $t < T$. That is, the reserve balance of the bank at the end of the session (r_t^j) is accumulated only if it is positive and deficiencies have a lower bound of zero. Because current accounts cannot be negative overnight, all reserves maintained in the central bank after the accumulated balance of a bank reaches the reserve requirement R are kept in excess and remunerated at the deposit rate.

Given market rates, the distribution of shocks, the distribution of banks over individual states and the evolution of those states, banks decide on borrowing and lending in order to maximise the expected sum of profits over all T sessions

$$E_1 \left(\sum_{t=1}^T \pi_t^j \right),$$

where E_1 is the expectation with respect to the information set at the beginning of trading session 1. Let i_t^j be the interest rate at which bank j exchanges reserves in the market at the session t . The profits of this bank on any day, are

$$\pi_t^j = i_t^j b_t^j - c_t^j, \quad (5)$$

where $i_t^j b_t^j$ are the revenues (costs) from lending (borrowing) funds in the market at the rate i_t^j and c_t^j represents the end-of-session costs derived from going to the deposit and lending facilities of the central bank.

The particular expression for the costs of using the facilities, c_t^j , depends on the day of the maintenance period. For the last day of the period, these costs are

$$c_T^j = i^l (d_T^j - m_T^j - \lambda_T^j) I[d_T^j \geq m_T^j + \lambda_T^j] - i^d (d_T^j - m_T^j - \lambda_T^j) I[d_T^j < m_T^j + \lambda_T^j], \quad (6)$$

where $I[a]$ is an indicator function that takes value 1 when the statement in brackets is true. If the balance of the bank at the end of the day ($m_T^j + \lambda_T^j$) is not enough to fulfil the deficiency (so that $d_T^j \geq m_T^j + \lambda_T^j$), the bank will have to borrow the difference from the lending facility. Otherwise, if the bank accumulates excess reserves ($d_T^j < m_T^j + \lambda_T^j$) they will be deposited at the deposit facility

earning the rate i^d . Since in equilibrium the market rate is between i^d and i^l , the bank will use the facilities only if it has to. For the rest of days, $t < T$, the costs of using the facilities are

$$c_t^j = -i^l(m_t^j + \lambda_t^j)I[0 \geq m_t^j + \lambda_t^j] - i^d(m_t^j + \lambda_t^j - d_t^j)I[d_t^j < m_t^j + \lambda_t^j]. \quad (7)$$

If the balance of the bank at the end of the day is negative (that is, $0 \geq m_t^j + \lambda_t^j$), the bank will have to borrow the necessary funds from the lending facilities to set it to zero. Otherwise, if the bank accumulates excess reserves ($d_t^j < m_t^j + \lambda_t^j$) they will be deposited at the deposit facility earning the rate i^d .

In order to generate a distribution of rates, the model will be solved for a variety of economies that differ upon the trade frictions we impose on market participants. The possibilities range from the frictionless case to autarchy. In the frictionless case banks meet in a single market place and all trades are centralised there. The equilibrium outcome of that economy can be characterised by a single interest rate and a distribution of quantities traded. This distribution depends on the heterogeneity of banks, that is, the levels of reserves they start the day with ($a_t^j, j = 1, \dots, n$) and the deficiencies they have ($d_t^j, j = 1, \dots, n$). As we will see below these two variables will determine the supply of funds for each bank and, therefore, the amounts transacted in the market. In autarchy there is no trade and a distribution of shadow interest rates is obtained. These shadow prices are defined as the marginal cost of borrowing or lending the first unit of reserves and, therefore, its distribution will also depend upon the heterogeneity of banks on each day.

Between these two economies we can generate additional ones in the following manner. Think of an economy where, because of search or transaction costs, markets are segmented. They are like islands not connected with one another. Each of these separated markets can in principle generate a different price and a different amount traded because their composition in terms of the agents involved may differ from one to another. So, if we look at the economy as a whole, it will be characterised by a joint distribution of prices and quantities. Next, we can perform the experiment of increasing the transaction/search costs. When these costs are zero or very small, the optimal size of the market is the whole economy. This is what we call the frictionless case. As we increase these costs the size of these markets decrease and the solution converges to the autarchic case.

3. SOLUTION OF THE MODEL

The way to solve this problem is by backward induction. We first solve the model at time T and work backward towards the first period.

3.1 The last day of the reserve maintenance period (T)

The problem of bank j on the last day T can be written in dynamic programming form as follows. Let $V_T(s_T^j; S_T)$ be the value function defined as the maximized profits of bank j at the last day of the period given its individual state s_T^j and the aggregate state S_T . This function satisfies:

$$V_T(s_T^j; S_T) = \max_{b_T^j} E_T(\pi_T^j) = \max_{b_T^j} E_T(i_T^j b_T^j - c_T^j), \quad (8)$$

with c_T^j defined in (6). The first order condition for a maximum is

$$i_T^j = i^l F_\lambda(d_T^j + b_T^j - a_T^j) + i^d [1 - F_\lambda(d_T^j + b_T^j - a_T^j)]. \quad (9)$$

This expression says that banks determine their supply of funds to the market in order to equate the marginal revenue of lending an additional unit of reserves with the expected marginal cost of that unit when reserves are needed, that is, when they are computed for the reserve requirement. These costs are i^l when the bank is overdrawn [with probability $F_\lambda(d_T^j + b_T^j - a_T^j)$], and i^d when the bank has excess reserves [with probability $1 - F_\lambda(d_T^j + b_T^j - a_T^j)$]. From this expression we observe that the supply of reserves of bank j , b_T^j , is increasing with its initial level of reserves (a_T^j), the rate at which the bank exchanges reserves in the market (i_T^j), and it is decreasing with the reserve deficiency (d_T^j), the lending rate (i^l) and the deposit rate (i^d). Furthermore, the partial derivative of the value function with respect to d_T^j is

$$\frac{\partial V_T(s_T^j; S_T)}{\partial d_T^j} = -i_T^j. \quad (10)$$

Remember from (9) that the supply of reserves on the last day of the maintenance period depends negatively on the level of deficiency. Therefore, the opportunity cost of starting the last day of the reserve maintenance period with one more unit of deficiency is equal to the market interest rate lost.

Case a: frictionless economy. The particular form of the equilibrium solution depends upon the market structure considered. First, assume that all trades are centralized in a market place and there is perfect information about banks situation in terms of the values of s_T^j and its distribution. In this case, there is a single interest rate that clears the market, $i_T^j = i_T$. In the market, loans are in zero net supply so, aggregating supplies yields the equilibrium rate⁴

$$i_T = i^d + (i^l - i^d)F_\lambda(D_T - A_T). \quad (11)$$

In this expression D_T and A_T are the per capita level of deficiency and initial reserves, respectively:

$$D_T \equiv \frac{1}{n} \sum_{j=1}^n d_T^j; A_T \equiv \frac{1}{n} \sum_{j=1}^n a_T^j.$$

Then, the supply of funds by bank j , b_T^j , becomes

$$b_T^j = (D_T - A_T) - (d_T^j - a_T^j), \quad (12)$$

so a bank will be supplying or demanding reserves in the market depending on whether the “individual excess reserves” $d_T^j - a_T^j$ are below or above the aggregate value. Notice a bank can have excess reserves, $d_T^j < a_T^j$, and still borrow them because the average value is even lower. As we have seen, in that situation reserves will be cheap.

Case b: autarchy. Now assume that banks are on their own so no trades are possible. Since banks are isolated, $b_T^j = 0$ and the shadow rate is

$$i_T^j = i^d + (i^l - i^d)F_\lambda(d_T^j - a_T^j), \quad (13)$$

so that the cross section distribution of shadow rates is a nonlinear transformation of the cross section distribution of states $(d_T^j - a_T^j)$.

Case c: Market groups. In order to generate intermediate cases, where there is a cross section of both, prices and quantities, assume we form random groups of size h . If h is n we are in the frictionless market (case a). If h is 1 we have autarchy (case b). We use $g(h)$ to index groups. It gives the different groups that can be made of h members out of n agents. We assume competition within each group. Aggregating supplies for each group yields the equilibrium rate

$$i_T^{g(h)} = i^d + (i^l - i^d) F_\lambda [D_T^{g(h)} - A_T^{g(h)}] \quad (14)$$

with $D_T^{g(h)}$ and $A_T^{g(h)}$ being the aggregate values of deficiencies and reserves for that group, i.e.

$$D_T^{g(h)} \equiv \frac{1}{h} \sum_{j \in g(h)}^n d_T^j; A_T^{g(h)} \equiv \frac{1}{h} \sum_{j \in g(h)}^n a_T^j \quad (15)$$

while trade of bank j within the group is

$$b_T^j = (D_T^{g(h)} - A_T^{g(h)}) - (d_T^j - a_T^j). \quad (16)$$

3.2 Days before the last ($t < T$)

Define the value function as

$$V_t(s_t^j; S_t) = \max_{b_t^j} E_t [\pi_t^j + V_{t+1}(s_{t+1}^j; S_{t+1})] = \max_{b_t^j} E_t [i_t^j b_t^j - c_t^j + V_{t+1}(s_{t+1}^j; S_{t+1})],$$

where the costs of using the facilities, c_t^j , are defined in (7). Using the evolution of d_{t+1}^j in (4), the first order condition with respect to b_t^j gives

$$i_t^j = i^l F_\lambda (b_t^j - a_t^j) + i^d [1 - F_\lambda (d_t^j + b_t^j - a_t^j)] -$$

⁴ See Pérez Quirós and Rodríguez Mendizábal (2003) for details on this expression.

$$- \int_{b_t^j - a_t^j}^{d_t^j + b_t^j - a_t^j} \left[\int_{-\infty}^{\infty} \frac{\partial V_{t+1}(s_{t+1}^j; S_{t+1})}{\partial d_{t+1}^j} f_{\varepsilon}(\varepsilon_{t+1}^j) d\varepsilon_{t+1}^j \right] f_{\lambda}(\lambda_t^j) d\lambda_t^j, \quad (17)$$

which generates the supply of funds on sessions $t < T^5$. Notice, it depends on the marginal value of reserves on the next session as measured by the partial derivative of the value function but only in those instances when the bank is accumulating reserves. As before, banks equate the marginal revenue with the marginal cost of supplying funds. For any $t < T$, the partial derivative of the value function with respect to d_t^j is

$$\begin{aligned} \frac{\partial V_t(s_t^j; s_t)}{\partial d_t^j} = & -i_t^d [1 - F_{\lambda}(d_t^j + b_t^j - a_t^j)] + \\ & + \int_{-\infty}^{b_t^j - a_t^j} \left[\int_{-\infty}^{\infty} \frac{\partial V_{t+1}(s_{t+1}^j; S_{t+1})}{\partial d_{t+1}^j} f_{\varepsilon}(\varepsilon_{t+1}^j) d\varepsilon_{t+1}^j \right] f_{\lambda}(\lambda_t^j) d\lambda_t^j. \end{aligned} \quad (18)$$

The intuition of this expression is as follows. The cost of having a unit of deficiency more on day t , depends on the situation of the bank at the end of the day. If the bank ends up the day locked-in, starting day t with a larger deficiency has a low value, the deposit rate. This event happens with probability $[1 - F_{\lambda}(d_t^j + b_t^j - a_t^j)]$. This is the first term of the right hand side of (18). In all other cases, a larger deficiency increases d_{t+1}^j permanently and the value of this event is determined by $\partial V_{t+1}^j / \partial d_{t+1}^j$. This is the second term.

In general, explicit expressions for the solution of this model are not available for days $t < T$. The next section presents numerical simulations to show the main results. However, some intuition is available from the form of the expressions that define the solution. From (17) we see that in determining their supply of funds, banks care about the cases where the reserve problem is at a corner, that is, when the bank is overdraft ($\lambda_t^j \leq b_t^j - a_t^j$) or “locked-in” ($d_t^j + b_t^j - a_t^j \leq \lambda_t^j$). Because being “locked-in” is an absorbing state, the probability of reaching it increases over time which makes banks postpone the accumulation of reserves. Also, we can see that there will be use of the standing facilities before day T . This will happen if a bank has a negative current account at the end of the day (use of lending facility) or is locked-in (use of deposit facility). Finally, the

distribution of interest rates and trade will depend upon the distribution of the individual states $s_t^j = (d_t^j, a_t^j)$. This means that changes in policy will, in general, affect the equilibrium distributions. In particular, level shifts in which the central bank changes the reserve requirement, R , in the same amount as the initial reserves, A_1 , are not neutral. Changing the initial level of reserves together with reserve requirements affects the probability of reaching the corner states, and therefore, should affect the distribution of rates and quantities under any type of market structure.

4. SIMULATIONS

We simulate an economy with a reserve maintenance periods of $T = 3$ days with $n = 12$ banks. Each of these banks are endowed with $A_1 = 100$ units of reserves. The reserve requirement is $R = 300$ for the whole period. This means that, in the aggregate, the system has enough reserves to satisfy the requirement. The lending rate is $i^l = 5$ percent and the deposit rate is $i^d = 3$ percent. This leaves a 200 basis point corridor as in the Eurosystem.

Before fully solving the model and to provide some intuition for the results below, we first compute the supply functions of an individual bank for a given sequence of expected market rates. Figure 1 presents the supply functions of the “average” bank in the frictionless economy. For each day, it is assumed that the bank has not received any shock on previous days. In order to compute these functions, we have to provide the expected rate in the market. To keep the functions comparable between days, we assume that the expected rate is equal to the middle of the band $(i^l + i^d)/2$. We see how the elasticities are reduced gradually over time. The shape of these functions suggests that at the beginning of the maintenance period, banks are indifferent with respect to their reserve level. This means that they will not try to compensate liquidity shocks and the interest rate will be stable both over time and across banks. As the end of the period gets nearer, though, demands become more inelastic so banks have clearer targets with respect to a particular level of reserves. This implies more trade and more volatility of rates.

To solve for the equilibrium prices and quantities we carry out a Monte Carlo experiment where we simulate $Z = 1000$ reserve maintenance periods identical to the one described at the beginning of the section. With respect to the shocks, we consider late shocks (λ_t^j) only. Here, λ_t^j represents the uncertainty about the changes in the current account by the end of the day because of transfers that

⁵ See Pérez Quirós and Rodríguez Mendizábal (2003) for details on this expression.

take place later in the day, clerical errors and the like. To construct these shocks, define as $\lambda_t^j(k)$ the random transfer of funds between banks k and j or the errors committed in accounting for a known transaction between these two banks. This transfer is assumed to be normal with mean 0 and standard deviation σ . If the shock is positive, funds are moved from bank k to bank j and if negative, bank j moves reserves to bank k . Assume $\lambda_t^j(j) = 0$. The shock λ_t^j , is, therefore equal to

$$\lambda_t^j = \sum_{k=1}^n \lambda_t^j(k)$$

which follows a normal distribution with zero mean and standard deviation

$$\sigma_j = \sigma \sqrt{n-1}.$$

It is easy to verify that these shocks always sum up to 0 across banks, so no reserves enter or leave the system in the aggregate and have covariances and correlations equal to

$$E_t(\lambda_t^j \lambda_t^k) = -E_t[\lambda_t^j(k)^2] = -\sigma^2$$

and

$$\rho_t(\lambda_t^j, \lambda_t^k) = \frac{E_t(\lambda_t^j \lambda_t^k)}{\sigma_j \sigma_k} = \frac{-1}{n-1},$$

respectively. In our simulation, the standard deviation of individual transfers is $\sigma = 20$ which implies that banks are subject to shocks which are jointly normal with standard deviation of $\sigma_j = \sigma (n-1)^{1/2} = 66.33$ and a correlation between shocks of $\rho_t(\lambda_t^j, \lambda_t^k) = -0.09$.

The rationale to model shocks in this way is as follows. Even if no reserves enter or leave the system, there is aggregate uncertainty in this economy. The reason is that, given the finite number of banks, prices and trade are not going to be independent on how reserves are reshuffled among them. In this sense, market segmentation will play a crucial role in linking different distributions of reserves into different prices. We will show that even in this simple case with no shocks that change the overall supply of reserves, the statistical properties of prices and quantities traded follow the stylised facts to be found from the data.

Tables 1, 2 and 3 report descriptive statistics for the state of the system defined by the initial levels of reserves (a_t^j), average daily deficiencies [$d_t^j/(T-t+1)$] and trade (b_t^j) for sessions 2 and 3, and for different sizes of the groups $h = \{2, 3, 4, 6, 12\}$. Let $d_t^j(z)$ be the average daily deficiency of bank $j = \{1, \dots, n\}$ in session $t = \{1, \dots, T\}$ of the simulation $z = \{1, \dots, Z\}$. The column labelled “mean” in Table 2 corresponds to the average deficiency and is computed as

$$mean(d_t^j) = \frac{1}{Z} \sum_{z=1}^Z \left[\frac{1}{n} \sum_{j=1}^n d_t^j(z) \right].$$

The column labelled “ σ_{ts} ” is the standard deviation of the average deficiency computed across simulations, that is,

$$\sigma_{ts}(d_t^j) = \sqrt{\frac{1}{Z} \sum_{z=1}^Z \left(\frac{1}{n} \sum_{j=1}^n d_t^j(z) - mean(d_t^j) \right)^2}.$$

Finally, the column labelled “ σ_{cs} ” is the average of the cross section standard deviation, that is,

$$\sigma_{cs}(d_t^j) = \frac{1}{Z} \sum_{z=1}^Z \sqrt{\frac{1}{n} \sum_{j=1}^n \left(d_t^j(z) - \frac{1}{n} \sum_{j=1}^n d_t^j(z) \right)^2}.$$

Computations for a_t^j and b_t^j in Tables 1 and 3 are equivalent.

The initial level of reserves (a_t^j) is an exogenous variable. This means that its distribution does not depend on the market structure as it is shown in Table 1. Because all banks start identical, deficiencies on $t = 2$ are also exogenous, though. On $t = 3$ as market groups get larger, deficiencies become smaller and less volatile as banks take advantage of trade. We observe that, for a given size of the group, the volatility of aggregate variables like the equilibrium interest rate or aggregate trade is larger on the last day. Also, we see that as the size of the group increases, the aggregate uncertainty decreases. Table 3 shows that banks respond to the larger uncertainty with more trade (compare columns for $t = 2$ and $t = 3$ in Table 3). As the size of the groups increase there is also more trade, which is why aggregate uncertainty decreases for the economy as a whole.

Table 4 reports statistics for the interest rate. First, we compute a measure of the aggregate interest rate for this economy. For that, we select banks that make positive loans and compute a weighted average of their rates. The weights are the percentage of the loans over the whole amount transacted that session⁶. We compute the square of the change between the aggregate interest rate that session and the value on the previous one. The average of that series shows in the column labelled σ_{ts} . It gives an indication of how volatile the aggregate interest rate is in the time series dimension. We also compute the cross section volatility of rates for banks that make loans in the market. The average of the corresponding cross section variance is reported in the column σ_{cs} . It gives an indication on how disperse rates are. We observe, the aggregate interest rate is more volatile on the last day, both in the time as well as in the cross section dimension. Furthermore, as groups become larger, the volatility decreases, since there is more room for trade.

In Table 4 we also show the correlation between both measures of dispersion in the column $\rho(ts,cs)$. We report two ways of calculating this correlation. The first one is constructing a time series of measures of dispersion and look at their correlation. The result is collected in the column $t = 2, 3$. The second one is for each session separately. Both measures of dispersion are very positively correlated as we find in the data.

Tables 5 and 6 present the use of the standing facilities for different days and size of market groups. Table 5 shows the probability of going to the lending and deposit facilities. For each realisation for the Monte Carlo simulation, this probability is computed for each bank given the distribution of shocks and then those probabilities are averaged over banks and simulations. Table 6 includes the expected use that all banks will make of the facilities, again averaged over all realisations of the simulation. As mentioned before, on the first day there is no trading so the use of the standing facilities is exogenous and, therefore, independent of the size of the market groups. We see that the recourse to the standing facilities is both more likely and larger on the last day of the maintenance period than on previous days. It is interesting to notice that the use of the lending facility is very similar for the three days, while the use of the deposit facility peaks on the last day as we observe in the data. Finally, as market groups become larger, banks find more opportunities to trade among themselves and go less to the standing facilities.

Out of the theoretical model and the simulation results we can draw a set of conclusions relevant for the empirical analysis. It is a clear prediction of the model that interest rate volatility increases towards the end of the maintenance period. The increase in volatility in a time series dimension with

⁶ This is the way the EONIA is computed.

the evolution of the maintenance period is not new in the literature. A large number of papers analyse this phenomenon. Hamilton (1996), Wurtz (2001) are just two examples for the US and the European case respectively. However, the cross-section definition of interest rates, that is, departures from the law of one price, have not been considered in the literature. The omission may have been due to lack of relevant data. Associated with these larger price volatilities we find a larger volume of trade, both in the market across banks and with the central bank through the use of the standing facilities. This larger trade is also concentrated at the end of the reserve maintenance period.

5. DESCRIPTION OF THE DATA

The data used in this study consists of interest rates obtained by the major European banks when they lend funds in the overnight market. In particular, each data point represents the average interest rate charged in that day by each lending bank. The sample covers 64 banks from January 4th 1999 to November 9th 2002. This data set was provided by the European Banking Federation (EBF) and is the one used to compute the time series for the EONIA. The number of observations on a particular day may be smaller than the number of banks, though, simply because some banks may not be active on that day or because they are borrowing. Furthermore, the number of banks in the panel is not always the same because the EONIA panel has changed in different occasions to include or exclude some banks.

Most of the papers analysing the market microstructure (see Hartmann, Manzanares and Manna (2000) as an example) usually construct their databases from quotes of the brokers in Reuters. This has several problems. First, they only cover the part of the market that is traded through brokers, missing the larger transactions that are usually done directly between banks. Additionally, brokers, when the market is very active, do not necessarily report the quotes to Reuters. Therefore, another big part of the market is missing. Finally, the quotes do not oblige the counterparts to trade, much more when the overnight market is uncollateralized, which implies that different rates are charged to different banks because of the different risks associated with particular transactions. On the contrary, in the EBA database the observations correspond to actual trades.

Obviously there are some drawbacks to the EBA database. First, we only have information for average rates during the day. That characteristic makes it not possible to say anything about the

intra-day activity. Second, we have only information about the lenders, not the borrowers. We cannot test any implication that theory could tell us about the borrowers' behaviour.

6. SOME PROPERTIES OF THE DATA

In order to empirically test the properties predicted by the theoretical model, some assumptions of the model could also be analysed to discard some alternative explanations that could imply the same predicated properties. For example, the model is based on the fact that no bank dominates the market. Banks are equal at the beginning of the maintenance period and they differ from each other in the path of the shocks that they receive over the maintenance period. If this is the case, individual excess profits, calculated as the interest rate obtained by the lending of their reserves minus the average rate obtained for those reserves, should be uncorrelated across maintenance periods. We test this hypothesis and we accept it at 5 percent in all but two of the banks of the sample. However, the model allows (and actually predicts) that profits for a given bank, maybe correlated over time, within a reserve maintenance period. We test this hypothesis and we reject the null of no correlation in more than 20 percent of the banks. We conclude from these findings that even though banks play different roles in different maintenance periods, idiosyncratic shocks allow them to keep advantage positions within the reserve maintenance period.

Another property that deserves some checking in relation to the structure of the banking system is to analyse if there exists a relation in the excess profits in a given maintenance period between the profits obtained by "market power" (i.e. on a given day, how much a bank makes for its reserves in excess of the market rate) and the "timing" (i.e. on a given maintenance period, how much a bank makes because it lends when the rates are higher than the average rate of the period). If the assumptions of the model are correct, these two sources of excess profits should be uncorrelated, because no bank should have a strategic behaviour in playing the markets game. These assumptions are corroborated by the data. No bank seems to be systematically playing the game of waiting until the rates are high to get advantage of its market power and the correlation between these two sources of excess profits is even negative (-0.13).

An important implication of the theoretical model is that most of the variability appears only in the last days of the maintenance periods. Our model only has three periods. Is this an appropriate representation of a 1-month long maintenance period? If three periods are enough, there should not be any differences in the density function of the data in the first $T-2$ periods of the maintenance

period, (where T is the number of days of the maintenance period). The idea is that those $T-2$ periods can be considered repetitions of the same distribution. In order to address this question empirically, we need to analyse the density function of the rates on different days of the maintenance period. We have information on the different rates that banks have obtained for their reserves and we estimate the distribution function for each day of the maintenance period. We consider as the same day days that have the same distance to the end of the reserve maintenance period. For example, to calculate the distribution function of the last day of the reserve maintenance period, we use all the 45 distributions of the end of the maintenance period days that we have in the sample. We do the same for all the other days. At the end we have 20 distributions; for the last day of the maintenance period, the day before, up to the day $t-19$. Given that, on average we have around 40 banks active on a given day, this implies an average of 1800 observations for each of these distributions. We calculate the Kolmogorov-Smirnov (KS) test of the equality of these 20 distributions. We accept the null that distributions are the same (doing pairs of KS tests) for all days of the maintenance period but the last 4. A good way of checking the intuition behind this result can be seen in Figure 2. In this Figure we plot in a two-dimensional scale the distance between the KS statistics for each pair of distributions. Obviously, these distances cannot be represented in an Euclidean space because they are 20-dimensional. However, we use multi-dimensional scaling to reduce these dimensions to two. The purpose of this technique is to obtain the two-dimensional projection of a N dimensional space. The intuition is that the Euclidian distances measured in the plane will be an approximation of the distances in the N -dimensional space. Points which are close in the plot will be close in the actual measure of the distance across the distributions. As we can see from the plot, the last days are away from the group of the rest of the days. Empirical evidence seems to corroborate that just using a few days is not a bad approximation of what is going on in the markets.

Finally, an important question needs to be addressed: Does the “law of one price” hold in this market? This is a key question, because all the theoretical analysis tries to explain deviations from this law. The data seems to confirm the relevance of the problem addressed by the theory. Figure 3 plots different measures of spreads across banks, standard deviations of rates (weighted by the value transacted and not weighted) on a given day and difference between rates corresponding to the ninth and the first deciles. All these measures contain the same message. Even though the asset transacted in the market is extremely homogeneous (reserves) different prices are paid at different moments for this homogeneous good. There is a clear violation of the law of one price.

One important caveat should be recognised. In our data, it may appear as if the law of one price is violated if rates vary during the day and banks lend funds at different hours. Given that banks reports only daily averages can this be the source of the dispersion of interest rates in the dataset? In order to address this question, we need to depart from our database and check for other sources of information on daily patterns. We are reluctant to use Reuters data because we know that they are not binding and that most of the transactions, when there is more action on the market, are made by direct contact across banks. We prefer to use Italian electronic market data (emid). This database captures quotes that are binding for the banks, giving us some more accurate information on the actual situation of the market. We have tick data for six months (from March to September 2002) which represent around 260,000 observations. In order to check the dispersion of the markets in each period of time we calculate volatilities of quotes every five minutes. These volatilities are plotted in Figure 4. As we can see, the volatility of rates is an end-of-the-day phenomenon. Figure 5 shows the average variation of the average rate quoted every five minutes with respect to the previous five minutes and the previous hour. Looking at this graph, it is clear that the variation of rates occurs at the end of the day. We conclude that dispersion across banks cannot be due to the fact that banks go to the market at different moments. The law of one price holds for most of the day and it seems to be at the end of the day when we observe the dispersion of rates across banks. We can then claim that different prices across banks cannot be explained by any intra day pattern.

Based on the previous analysis, it seems that the assumptions of the theoretical model are supported by the data. The fact that we have presented evidence against a big set of alternative explanations for the pattern of the rate allows us to concentrate on searching for empirical support to the conclusions of the model. These conclusions are summarized by the increase in volatility of rates both in the time series as well as in the cross section dimension as we get closer to the end of the maintenance period together with the positive correlation between both volatilities. Furthermore, there should be an increase in trade in the market and a larger use of both facilities also at the end of the reserve maintenance period.

7. TIME SERIES AND CROSS SECTION VOLATILITY

The main goal of our analysis is to study the relation between time series and cross section volatility of rates. We measure time series volatility as the absolute variation of rates from a day to the next. For the cross section volatility we use the standard deviation of rates where each of the rates obtained by a bank is weighted by the amount transacted on the day.

The first prediction of the theory is the fact that volatility increases at the end of the maintenance period both in a time series and in a cross section dimension. This fact can be clearly appreciated in Figure 6, where we represent the average absolute variation of rates in different days of the maintenance period and in Figure 7, where we represent the cross section volatility.

One way to see how close these two volatilities move together would be to calculate the correlation between the actual time series volatility (variation in overnight rates squared) and the definition of the cross section volatility that we consider (in our case, the standard deviation of the rates on a given day). The correlation between these two series is indeed high, namely 0.62. However, a few caveats should be taken into account when interpreting this number. Several features of the market may affect both volatilities in the same direction. From the theoretical model we have learned that some explanatory variables, particularly end of reserve maintenance periods should affect the time series and cross section volatility in the same direction. Similarly, other calendar effects associated with larger than average volatilities of payments like end of the months, end of the year, etc... may also be important. However, from the theoretical model, we have learned that the correlation between these two volatilities should be deeper than the one that comes from the fact that some exogenous variables affect both volatilities in the same direction. We expect that unexpected movements in the volatility of one of the variables will be correlated with unexpected movements in the same direction of the other volatility. Looking at the different tables of the simulation exercise, we have learned that, not only cross section and time series move together in relation with time in the maintenance period, but shocks to the liquidity of the system shift away the time path of both series at the same time. According to theory, the correlation should be positive and strongly significant. This conclusion could represent the deepest consequence of our theory, the fact that not only expected volatilities move together but shocks to these volatilities also move in the same direction.

In order to separate the expected of the unexpected component of the volatility of each of the variables we estimate a reduced form model where we include the explanatory variables described in the theoretical part.

The estimated model is the following:

$$i_t = i_{t-1} + \beta' X_t + h_t \varepsilon_t \quad (39)$$

$$\ln(h_t) = \lambda V_t + \xi u_t + \sum_{j=1}^n \left[\delta_{j,1} (\ln(h_{t-j}) - \lambda V_{t-j}) + \delta_{j,2} \frac{\varepsilon_{t-j}}{\sqrt{h_{t-j}}} + \delta_{j,3} \left(\frac{\varepsilon_{t-j}}{\sqrt{h_{t-j}}} - \sqrt{\frac{2}{\pi}} \right) \right] \quad (40)$$

$$\ln(\text{var}_t) = \lambda' V_t + \sum_{j=1}^n [\delta_{j,1} (\ln(\text{var}_{t-j}) - \lambda' V_{t-j})] + u_t \quad (41)$$

$$\varepsilon_t \sim pN(0,1) + (1-p)N(0,\sigma_1) \quad u_t \sim N(0,\sigma_2) \quad (42)$$

where the correlation of ε_t and u_t is equal to 0. The variables X_t and V_t represent the set of calendar dummies that affect the mean and the volatility of the rates. These variables are carefully defined in Table 7. This model follows Pérez Quirós and Rodríguez Mendizábal (2003) but has been extended to consider the cross section dimension of our problem. The mixture of normals for the time series volatility equation is standard in the literature of the empirical analysis of the overnight rate to capture the long tails of the distributions of rates. We find that this mixture is not necessary when describing the cross section volatility of rates.

It is important to point out that an estimation like the proposed one has no implications on the direction of causality from the time series to the cross section volatility or viceversa. It would be equivalent to estimate the previous equations allowing for the shocks to be correlated. The estimated coefficient ξ will be the estimated correlation of the unexpected shocks to the variances. It turns out it is positive and extremely significant (p-value = 0.00).

The results of estimating jointly (39), (40), (41), and (42) are displayed in Table 7. According to our statistical analysis the main implications of the theory are supported by the data. Cross section and time series volatility are highly correlated even controlling for all the explanatory variables that explain the joint behaviour of both. One more implication can also be added. As predicted by Tables 5 and 6, the use of the facilities is also closely related to the end of the maintenance period. Figure 8 plots the average use of these facilities on different days of the maintenance period. The graph in this case is probably more illustrative than any formal test that we might do; as predicted by the theory, the use of such facilities is clearly linked to the end of the maintenance period.

8. CONCLUSIONS

In this paper we provide a parsimonious model of the daily funds market equilibrium. We build on the original seminal contribution made by Poole (1968). The essential feature of the models of overnight market equilibrium, in the tradition of Poole, is that commercial banks do not know their end-of-day position at the time of trading. This reflects the fact that credit institutions have imperfect information and monitoring systems. The model uses a number of strong simplifying assumptions. First, it is a partial equilibrium model of the money market. The dependence of the excess demand for daily funds on the other activities of the commercial bank is not modelled explicitly. Risk neutrality is assumed. The effects of capitalisation inside the reserve maintenance period are ignored. All these simplifying assumptions are unrealistic. They make harder for the model to reproduce the empirical evidence.

In our research we used the EONIA panel database, kindly made available by the European Banking Federation (EBF). The database includes daily information on the lending rates applied by contributing commercial banks. Interest rates correspond to actual trading rates. Banks inactive on a given day are not included in the database. The data clearly shows an increase in the average time series volatility and cross section dispersion towards the end of the reserve maintenance period. A look at quantities allows us to identify similar patterns for the volume traded and for the use of the two standing facilities provided by the central banks. These facts motivate the modelling strategy in the paper.

One of our model's main ingredient is the effect that the operational framework of monetary policy in the euro area has on the elasticity of the supply of funds by banks throughout the reserve maintenance period. The elasticity is high, declines gradually over time, and becomes low on the last day of the period. Market segmentation and heterogeneity are the other ingredients to generate the distribution of rates and trade across banks. We have shown that apart from the extreme cases (i.e. perfect competition and autarky) we are able to derive distributions for the interest rates and quantities traded with the same properties as in the data.

One immediate implication of the model concerns the level of reserves and the timing of liquidity provision by the central bank. With the nonlinearities imposed by the operational framework of monetary policy when and how much liquidity is made available become relevant. In particular, a change in reserve requirements compensated by an increase in liquidity is not neutral and should affect the distribution of rates and quantities traded in the market. Additionally, the model is fully

flexible on many dimensions and could be extended to analyse other issues in this market. For example, we could distinguish between large and small banks, and between universal and investment banks. It could also consider networks of banks structured in a systematic way. It is a promising area for further work.

REFERENCES

- ANGELONI, I. and A. PRATI (1996). “The Identification of Liquidity Effects in the EMS: Italy 1991-92”, *Open Economies Review*, 7, pp. 275-293.
- ANGELONI, I. and E. BISAGNI (2002). *Liquidity Effects in the Euro Area*, mimeo.
- BALDUZZI, P., G. BERTOLA, and S. FORESI (1997). “A Model of Target Changes and the Term Structure of Interest Rates”, *Journal of Money Credit and Banking*, 30, pp. 36-50.
- BALTEMSPERGER, E. (1980). “Alternative Approaches to the Theory of the Banking Firm”, *Journal of Monetary Economics*, 6, pp. 1-37.
- BARTOLINI, L., G. BERTOLA, and A. PRATI (2001). “Banks’ Reserve Management, Transactions Costs, and the Timing of Federal Reserve Intervention”, *Journal of Banking and Finance*, 25, pp. 1287-1318.
- (2002). “Day-to-Day Monetary Policy and the Volatility of the Federal Funds Rate”, *Journal of Money Credit and Banking*, 34, N.º 1, February, pp. 137-159.
- CAMPBELL, J. (1987). “Money Announcements, the Demand for Bank Reserves, and the Behavior of the Federal Funds Rate within the Statement Week”, *Journal of Money Credit and Banking*, 19, pp. 56-67.
- CASSOLA, N. and C. MORANA (2003). *Volatility of Interest Rates in the Euro Area: Evidence from High Frequency Data*, ECB Working Paper 235, June.
- FURFINE, C. H. (1999). “The Microstructure of the Federal Funds Market, Financial Markets”, *Institutions and Instruments*, Vol. 8, N.º 5, November, pp. 24-44.
- (2000). Interbank “Payments and the Daily Federal Funds Rate”, *Journal of Monetary Economics*, 46, pp. 535-553.
- GUTHRIE, G. and J. WRIGHT (2000). “Open Mouth Operations, Journal of Monetary Economics”, 46(2), October, pp. 489-516.

- HAMILTON, J. (1996). “The Daily Market for Fed Funds”, *Journal of Political Economy*, pp. 26-56.
- HARTMANN, P., M. MANNA, and A. MANZANARES (2001). “The Microstructure of the Euro Money Market, *Journal of International Money and Finance*, 20 (6), pp. 895-948.
- HENCKEL, T, A. IZE, and A. KOVANEN (1999). *Central Banking without Central Bank Money*, IMF Working Paper 92, July.
- LASSER, D. J. (1992). “The Effect of Contemporaneous Reserve Accounting on the Market for Federal Funds”, *Journal of Banking and Finance*, 16(6), pp. 1047-1056.
- MCCALLUM, B. (1999). “Issues in the Design of Monetary Policy Rules”, in J. Taylor and M. Woodford (eds.), *Handbook of Macroeconomics*, Vol. 1C, Amsterdam, North-Holland, chapter 23.
- PÉREZ-QUIROS, G. and H. RODRÍGUEZ MENDIZÁBAL (2003). *The Daily Market for Funds in Europe: Has Something Changed with EMU?*, UAB-IAE Working Paper 559.03.
- POOLE, W. (1968). “Commercial Bank Reserve Management in a stochastic model. Implications for Monetary policy”, *The Journal of finance*, Vol. 23, Issue 5, December, pp.769-791.
- PRATI, A., L. BARTOLINI, and G. BERTOLA (2002). *The Overnight Interbank Market: Evidence from The G-7 and the Eurozone*, CEPR Working Paper 3090.
- ROBERDS, W., D. RUNKLE, and C. H. WHITEMAN (1996). “A Daily View of Yield Spreads and Short-Term Interest Rate Movements”, *Journal of Money, Credit and Banking*, 28(1), February, pp. 34-53.
- RUDEBUSCH, G. (1995). “Federal Reserve Interest Rate Targeting, Rational Expectations, and the Term Structure”, *Journal of Monetary Economics*, 24, April, pp. 245-274.
- TAYLOR, J. (ed.) (1999). *Monetary Policy Rules*, Chicago, University of Chicago Press.
- WOODFORD, M. (2001). *Monetary Policy in the Information Economy*, NBER Working Paper 8674, December.
- WÜRTZ, F. REINHARDT (2003). *A Comprehensive Model on the Euro Overnight Rate*, Working Paper Series.

Table 1Descriptive statistics for initial reserves (a_t)

s	$t = 2$			$t = 3$		
	mean	σ_{ts}	σ_{cs}	mean	σ_{ts}	σ_{cs}
2	100	-	64.37	100	-	91.56
3	100	-	64.37	100	-	91.56
4	100	-	64.37	100	-	91.56
6	100	-	64.37	100	-	91.56
12	100	-	64.37	100	-	91.56

Table 2Descriptive statistics for daily deficiencies (d_t)

s	$t = 2$			$t = 3$		
	mean	σ_{ts}	σ_{cs}	mean	σ_{ts}	σ_{cs}
2	104.3	5.08	33.80	114.7	13.11	89.69
3	104.3	5.08	33.80	111.6	10.20	81.29
4	104.3	5.08	33.80	110.3	8.77	77.01
6	104.3	5.08	33.80	109.2	7.51	71.69
12	104.3	5.08	33.80	108.1	6.21	66.48

Table 3Descriptive statistics for lending (b_t)

s	$t = 2$			$t = 3$		
	mean	σ_{ts}	σ_{cs}	mean	σ_{ts}	σ_{cs}
2	296.5	60.91	77.30	492.5	37.47	101.6
3	381.3	74.18	92.06	584.7	44.13	121.8
4	414.4	77.87	95.56	635.3	47.59	131.0
6	441.7	82.33	100.7	687.4	50.42	140.1
12	464.1	86.61	106.4	749.4	57.62	155.6

Table 4

Descriptive statistics for interest rates

	$t = 2, 3$	$t = 2$			$t = 3$		
s	$\rho(ts,cs)$	σ_{ts}	σ_{cs}	$\rho(ts,cs)$	σ_{ts}	σ_{cs}	$\rho(ts,cs)$
2	0.1393	0.0705	0.3337	-0.0048	0.1021	0.5834	0.1417
3	0.2170	0.0385	0.3177	0.2111	0.0573	0.4818	0.1754
4	0.3293	0.0267	0.2832	0.3079	0.0434	0.4138	0.3065
6	0.3247	0.0145	0.2078	0.4496	0.0272	0.2831	0.2812
12	-	0.0047	-	-	0.0028	-	-

Table 5

Average probability of using the standing facilities

	Lending			Deposit		
s	$t = 1$	$t = 2$	$t = 3$	$t = 1$	$t = 2$	$t = 3$
2	0.0658	0.1157	0.1524	0.0013	0.1697	0.4807
3	0.0658	0.1090	0.1405	0.0013	0.1380	0.4788
4	0.0658	0.1038	0.1376	0.0013	0.1204	0.4773
6	0.0658	0.0990	0.1369	0.0013	0.0993	0.4705
12	0.0658	0.0918	0.1428	0.0013	0.0745	0.4564

Table 6

Average expected use of the standing facilities

	Lending			Deposit		
s	$t = 1$	$t = 2$	$t = 3$	$t = 1$	$t = 2$	$t = 3$
2	29.02	30.74	32.01	18.71	33.92	72.85
3	29.02	30.45	31.39	18.71	31.57	65.85
4	29.02	30.25	31.32	18.71	30.50	61.53
6	29.02	30.08	31.34	18.71	29.54	56.52
12	29.02	29.84	31.65	18.71	28.53	50.43

Table 7

Estimation of equations (39), (40), (41) and (42)

A: Mean parameters				
	Time series		Cross section	
	Estimation	Std. Error	Estimation	Std. Error
X_{1t}	-0.213	(0.049)	-	-
X_{2t}	-0.679	(0.763)	-	-
X_{3t}	4.296	(0.493)	-	-

B: Variance parameters				
	Time series		Cross section	
	Estimation	Std. Error	Estimation	Std. Error
λ_{1t}	-6.481	(0.746)	-9.810	(0.061)
λ_{2t}	3.040	(0.273)	2.491	(0.113)
λ_{3t}	0.589	(0.267)	-	-
λ_{4t}	1.873	(0.412)	2.606	(0.683)
λ_{5t}	1.206	(0.296)	1.456	(0.149)
λ_{6t}	0.165	(0.200)	0.113	(0.076)
λ_{7t}	0.237	(0.248)	0.428	(0.110)
λ_{8t}	0.833	(0.267)	-	-
ξ	0.403	(0.045)	-	-
δ_{11}	0.209	(0.039)	0.359	(0.022)
δ_{12}	0.541	(0.125)	0.049	(0.023)
δ_{13}	1.079	(0.227)	-	-
δ_{21}	0.030	(0.042)	-	-
δ_{21}	0.217	(0.051)	-	-
σ	0.556	(0.043)	1.476	(0.149)
p	0.036	(0.004)	-	-

The parameters β_{jt} , $j = 1, 2, 3$, are the coefficients of the variables X_{jt} in equation (39) while the parameters λ_{jt} , $j = 1, 2, \dots, 9$, are the coefficients of the variables V_{jt} in equation (40B) where:

X_{1t} = Constant	X_{2t} = End of maintenance period*	X_{3t} = Beginning of maintenance period
V_{1t} = Constant	V_{2t} = End of maintenance period	V_{3t} = Beginning of maintenance period
V_{4t} = End of year	V_{5t} = End of month	V_{6t} = Friday
V_{7t} = Council meeting	V_{8t} = Day after council meeting	

(*) The variable “End of maintenance period” includes the four last days of the MP, except when the MP ends on a Wednesday. In this case, there is no end of maintenance period effect because the banks have the last open market operation to adjust their balances. Similar estimation results are obtained when the variable “End of maintenance period” only includes the days after the last open market operation.

FIGURE 1

Excess supply functions for average bank in the nonlinear case

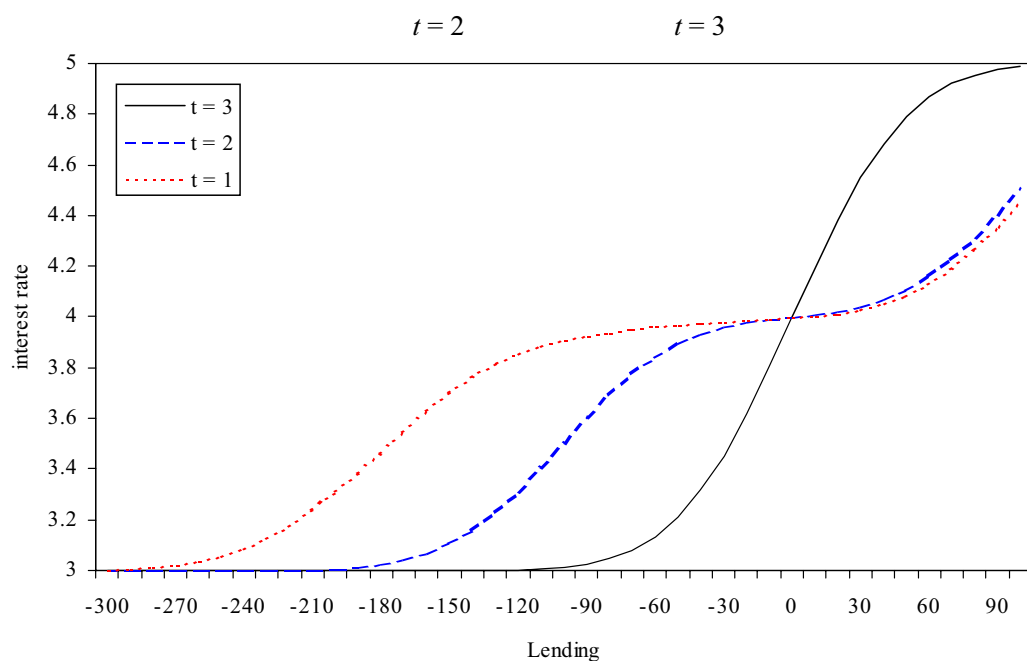
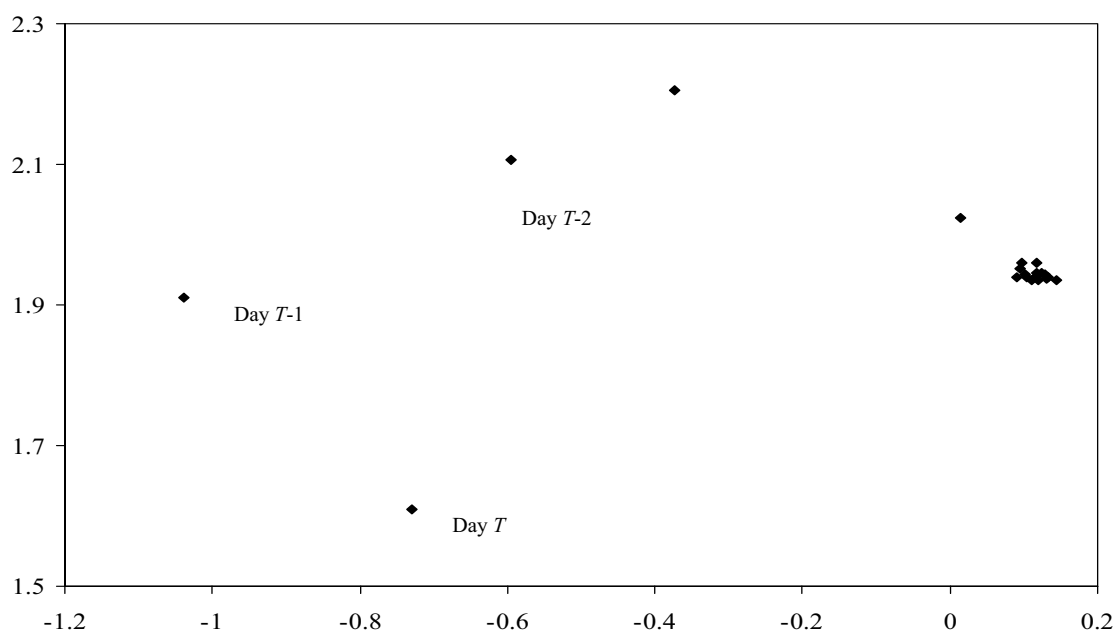


FIGURE 2

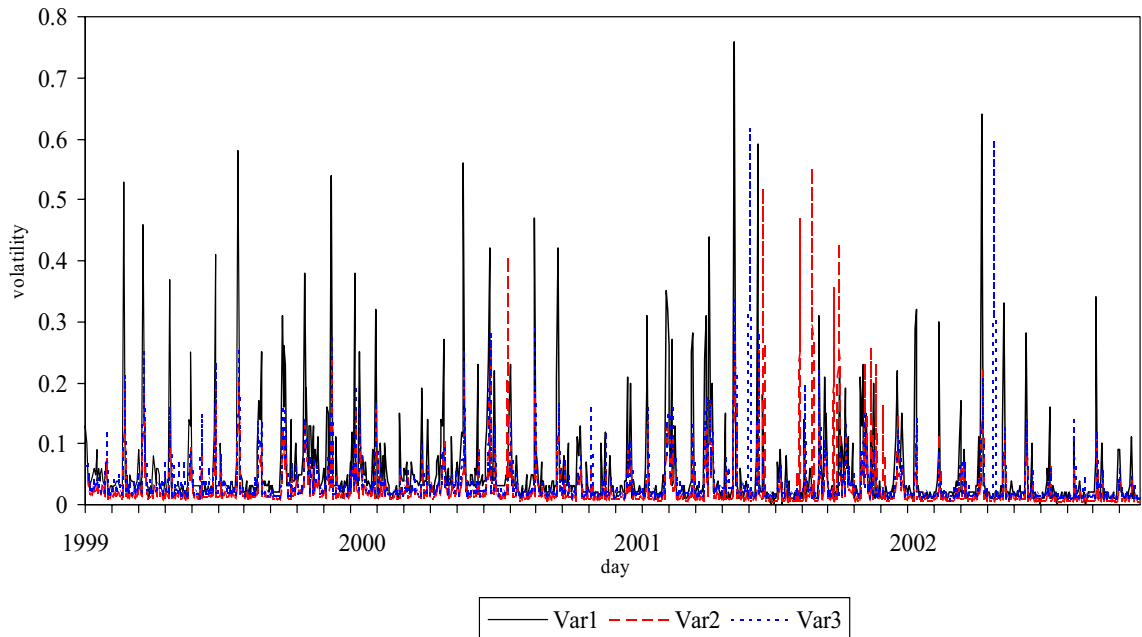
Distances of the Kolmogorov-Smirnov tests



Note: The graph plots the multidimensional scaling representation of the distances of the Kolmogorov-Smirnov tests of equalities of the distribution functions of rates in different days of the maintenance period

FIGURE 3

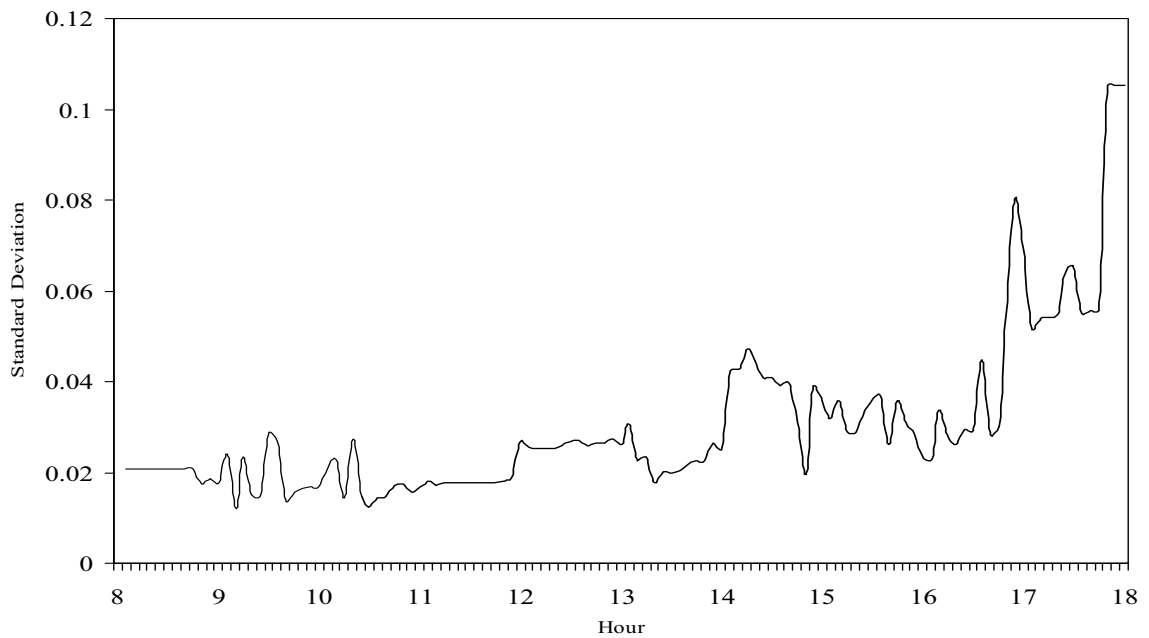
Different measures of dispersion of rates across banks



Note: Var1 is the difference between the rates paid by the Euro that represents the 10% cheaper and the 10% most expensive. Var2 is the standard deviation of rates weighted by the amount of Euro transacted by each bank and Var3 is the standard deviation of rates when each rate (each bank) is considered as one observation.

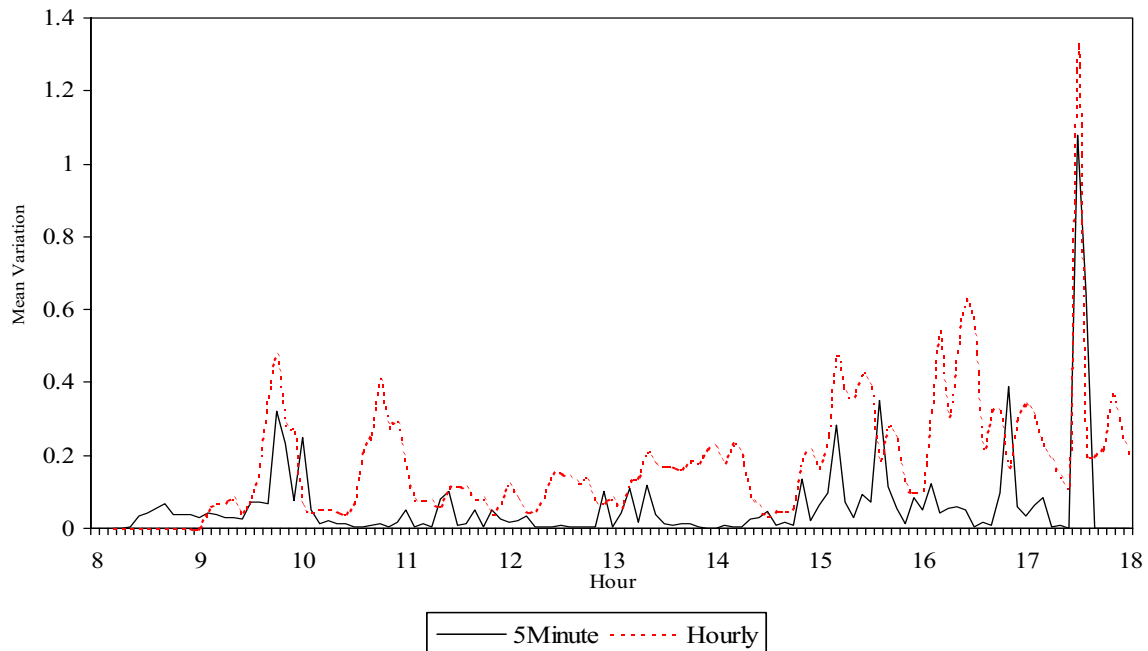
FIGURE 4

Intraday volatility of rates



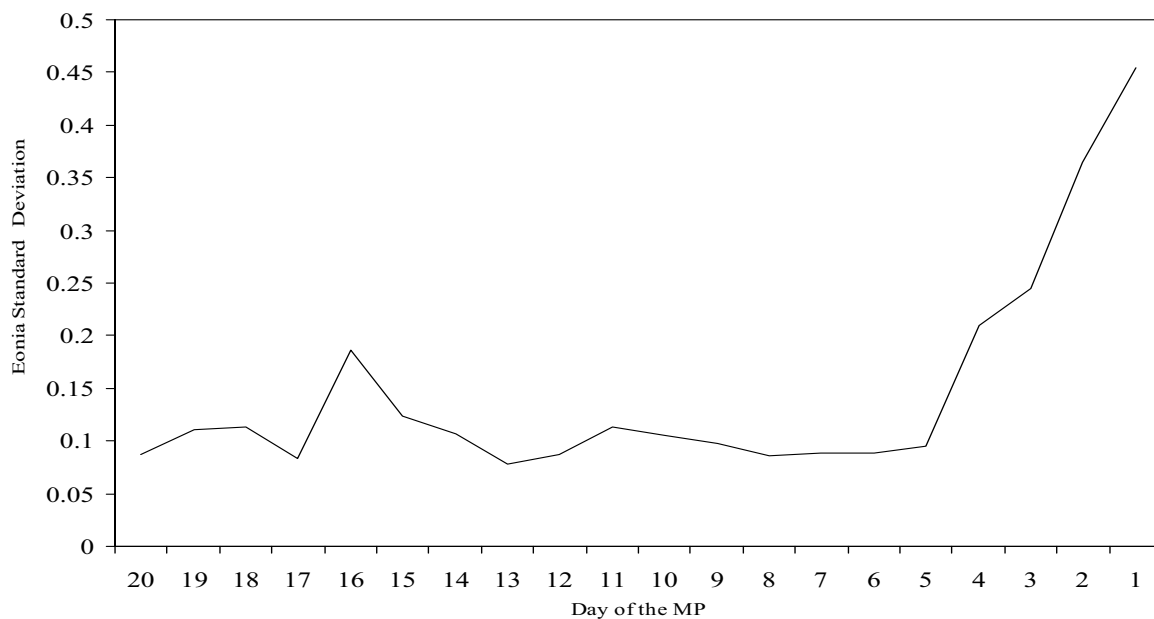
Note: The graph plots the average volatility of quotes for every 5 minute period interval for the emid data in the period March to September 2002.

FIGURE 5
Intraday volatility of rates



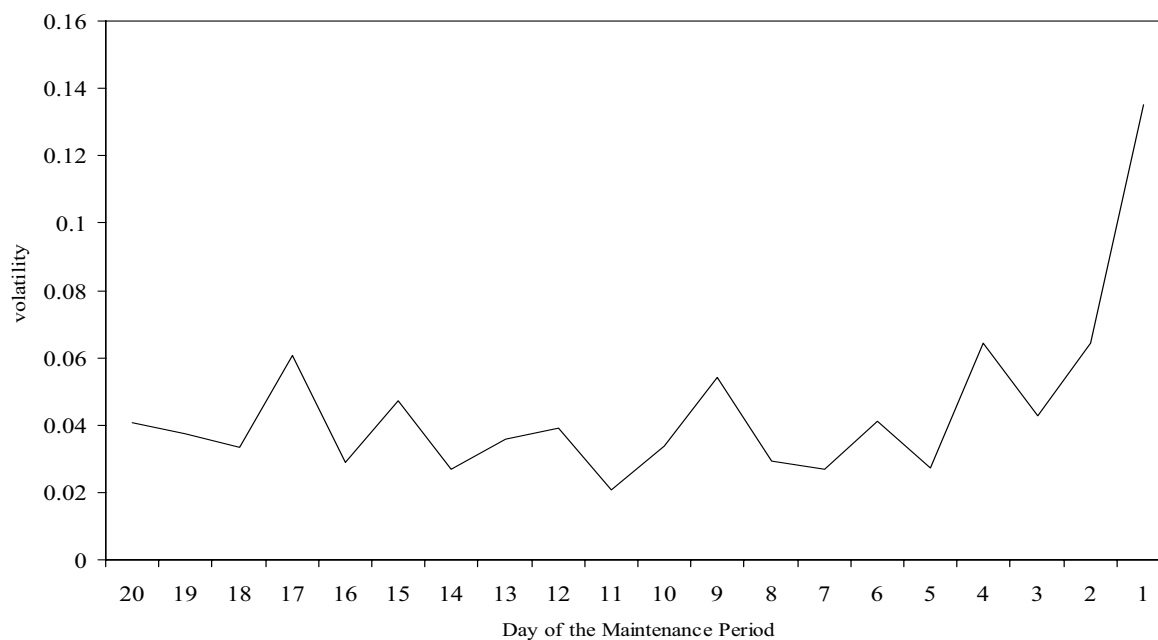
The graph plots the average variation of the average rate quoted every five minutes with respect to the previous five minutes period and the previous hour. Emid data in the period March to September 2002.

FIGURE 6
Time series volatility of the Eonia



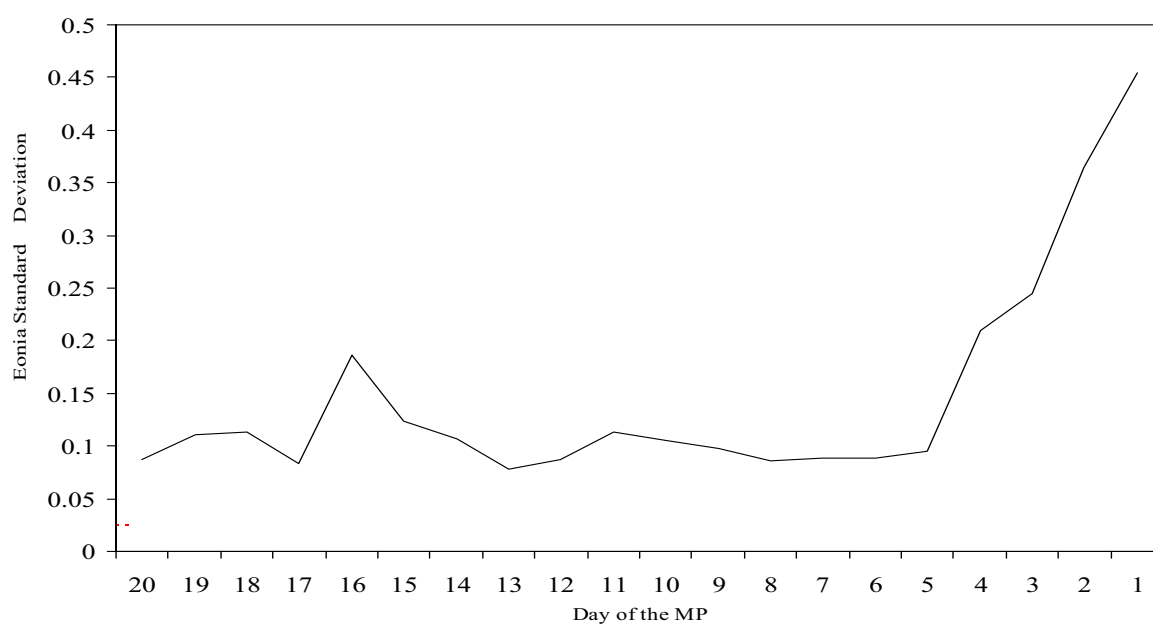
The graph plots the average absolute variation of Eonia rates in each day of the maintenance period

FIGURE 7
Cross section volatility of the Eonia



The graph plots the average cross section standard deviation of Eonia rates in each day of the maintenance period

FIGURE 8
Use of standing facilities



The graph plots the average absolute variation of Eonia rates in each day of the maintenance period

European Central Bank working paper series

For a complete list of Working Papers published by the ECB, please visit the ECB's website (<http://www.ecb.int>).

- 202 "Aggregate loans to the euro area private sector" by A. Calza, M. Manrique and J. Sousa, January 2003.
- 203 "Myopic loss aversion, disappointment aversion and the equity premium puzzle" by D. Fielding and L. Stracca, January 2003.
- 204 "Asymmetric dynamics in the correlations of global equity and bond returns" by L. Capiello, R.F. Engle and K. Sheppard, January 2003.
- 205 "Real exchange rate in an inter-temporal n-country-model with incomplete markets" by B. Mercereau, January 2003.
- 206 "Empirical estimates of reaction functions for the euro area" by D. Gerdesmeier and B. Roffia, January 2003.
- 207 "A comprehensive model on the euro overnight rate" by F. R. Würtz, January 2003.
- 208 "Do demographic changes affect risk premiums? Evidence from international data" by A. Ang and A. Maddaloni, January 2003.
- 209 "A framework for collateral risk control determination" by D. Cossin, Z. Huang, D. Aunon-Nerin and F. González, January 2003.
- 210 "Anticipated Ramsey reforms and the uniform taxation principle: the role of international financial markets" by S. Schmitt-Grohé and M. Uribe, January 2003.
- 211 "Self-control and savings" by P. Michel and J.P. Vidal, January 2003.
- 212 "Modelling the implied probability of stock market movements" by E. Glatzer and M. Scheicher, January 2003.
- 213 "Aggregation and euro area Phillips curves" by S. Fabiani and J. Morgan, February 2003.
- 214 "On the selection of forecasting models" by A. Inoue and L. Kilian, February 2003.
- 215 "Budget institutions and fiscal performance in Central and Eastern European countries" by H. Gleich, February 2003.
- 216 "The admission of accession countries to an enlarged monetary union: a tentative assessment" by M. Ca'Zorzi and R. A. De Santis, February 2003.
- 217 "The role of product market regulations in the process of structural change" by J. Messina, March 2003.

- 218 “The zero-interest-rate bound and the role of the exchange rate for monetary policy in Japan” by G. Coenen and V. Wieland, March 2003.
- 219 “Extra-euro area manufacturing import prices and exchange rate pass-through” by B. Anderton, March 2003.
- 220 “The allocation of competencies in an international union: a positive analysis” by M. Ruta, April 2003.
- 221 “Estimating risk premia in money market rates” by A. Durré, S. Evjen and R. Pilegaard, April 2003.
- 222 “Inflation dynamics and subjective expectations in the United States” by K. Adam and M. Padula, April 2003.
- 223 “Optimal monetary policy with imperfect common knowledge” by K. Adam, April 2003.
- 224 “The rise of the yen vis-à-vis the (“synthetic”) euro: is it supported by economic fundamentals?” by C. Osbat, R. Ruffer and B. Schnatz, April 2003.
- 225 “Productivity and the (“synthetic”) euro-dollar exchange rate” by C. Osbat, F. Visselaar and B. Schnatz, April 2003.
- 226 “The central banker as a risk manager: quantifying and forecasting inflation risks” by L. Kilian and S. Manganelli, April 2003.
- 227 “Monetary policy in a low pass-through environment” by T. Monacelli, April 2003.
- 228 “Monetary policy shocks – a nonfundamental look at the data” by M. Klaeffering, May 2003.
- 229 “How does the ECB target inflation?” by P. Surico, May 2003.
- 230 “The euro area financial system: structure, integration and policy initiatives” by P. Hartmann, A. Maddaloni and S. Manganelli, May 2003.
- 231 “Price stability and monetary policy effectiveness when nominal interest rates are bounded at zero” by G. Coenen, A. Orphanides and V. Wieland, May 2003.
- 232 “Describing the Fed’s conduct with Taylor rules: is interest rate smoothing important?” by E. Castelnuovo, May 2003.
- 233 “The natural real rate of interest in the euro area” by N. Giammarioli and N. Valla, May 2003.
- 234 “Unemployment, hysteresis and transition” by M. León-Ledesma and P. McAdam, May 2003.
- 235 “Volatility of interest rates in the euro area: evidence from high frequency data” by N. Cassola and C. Morana, June 2003.

- 236 “Swiss monetary targeting 1974-1996: the role of internal policy analysis” by G. Rich, June 2003.
- 237 “Growth expectations, capital flows and international risk sharing” by O. Castrén, M. Miller and R. Stiebert, June 2003.
- 238 “The impact of monetary union on trade prices” by R. Anderton, R. E. Baldwin and D. Taglioni, June 2003.
- 239 “Temporary shocks and unavoidable transitions to a high-unemployment regime” by W. J. Denhaan, June 2003.
- 240 “Monetary policy transmission in the euro area: any changes after EMU?” by I. Angeloni and M. Ehrmann, July 2003.
- 241 “Maintaining price stability under free-floating: a fearless way out of the corner?” by C. Detken and V. Gaspar, July 2003.
- 242 “Public sector efficiency: an international comparison” by A. Afonso, L. Schuknecht and V. Tanzi, July 2003.
- 243 “Pass-through of external shocks to euro area inflation” by E. Hahn, July 2003.
- 244 “How does the ECB allot liquidity in its weekly main refinancing operations? A look at the empirical evidence” by S. Eierskov, C. Martin Moss and L. Stracca, July 2003.
- 245 “Money and payments: a modern perspective” by C. Holthausen and C. Monnet, July 2003.
- 246 “Public finances and long-term growth in Europe – evidence from a panel data analysis” by D. R. de Ávila Torrijos and R. Strauch, July 2003.
- 247 “Forecasting euro area inflation: does aggregating forecasts by HICP component improve forecast accuracy?” by K. Hubrich, August 2003.
- 248 “Exchange rates and fundamentals” by C. Engel and K. D. West, August 2003.
- 249 “Trade advantages and specialisation dynamics in acceding countries” by A. Zaghini, August 2003.
- 250 “Persistence, the transmission mechanism and robust monetary policy” by I. Angeloni, G. Coenen and F. Smets, August 2003.
- 251 “Consumption, habit persistence, imperfect information and the lifetime budget constraint” by A. Willman, August 2003.
- 252 “Interpolation and backdating with a large information set” by E. Angelini, J. Henry and M. Marcellino, August 2003.
- 253 “Bond market inflation expectations and longer-term trends in broad monetary growth and inflation in industrial countries, 1880-2001” by W. G. Dewald, September 2003.

- 254 "Forecasting real GDP: what role for narrow money?" by C. Brand, H.-E. Reimers and F. Seitz, September 2003.
- 255 "Is the demand for euro area M3 stable?" by A. Bruggeman, P. Donati and A. Warne, September 2003.
- 256 "Information acquisition and decision making in committees: a survey" by K. Gerling, H. P. Grüner, A. Kiel and E. Schulte, September 2003.
- 257 "Macroeconomic modelling of monetary policy" by M. Klaeßling, September 2003.
- 258 "Interest rate reaction functions and the Taylor rule in the euro area" by P. Gerlach-Kristen, September 2003.
- 259 "Implicit tax co-ordination under repeated policy interactions" by M. Catenaro and J.-P. Vidal, September 2003.
- 260 "Aggregation-theoretic monetary aggregation over the euro area, when countries are heterogeneous" by W. A. Barnett, September 2003.
- 261 "Why has broad money demand been more stable in the euro area than in other economies? A literature review" by A. Calza and J. Sousa, September 2003.
- 262 "Indeterminacy of rational expectations equilibria in sequential financial markets" by P. Donati, September 2003.
- 263 "Measuring contagion with a Bayesian, time-varying coefficient model" by M. Ciccarelli and A. Rebucci, September 2003.
- 264 "A monthly monetary model with banking intermediation for the euro area" by A. Bruggeman and M. Donnay, September 2003.
- 265 "New Keynesian Phillips Curves: a reassessment using euro area data" by P. McAdam and A. Willman, September 2003.
- 266 "Finance and growth in the EU: new evidence from the liberalisation and harmonisation of the banking industry" by D. Romero de Ávila, September 2003.
- 267 "Comparing economic dynamics in the EU and CEE accession countries" by R. Süppel, September 2003.
- 268 "The output composition puzzle: a difference in the monetary transmission mechanism in the euro area and the US" by I. Angeloni, A. K. Kashyap, B. Mojon and D. Terlizzese, September 2003.
- 269 "Zero lower bound: is it a problem with the euro area?" by G. Coenen, September 2003.
- 270 "Downward nominal wage rigidity and the long-run Phillips curve: simulation-based evidence for the euro area" by G. Coenen, September 2003.
- 271 "Indeterminacy and search theory" by N. Giammarioli, September 2003.

- 272 "Inflation targets and the liquidity trap" by M. Klaeßling and V. López Pérez, September 2003.
- 273 "Definition of price stability, range and point inflation targets: the anchoring of long-term inflation expectations" by E. Castelnuovo, S. Nicoletti-Altimari and D. Rodríguez-Palenzuela, September 2003.
- 274 "Interpreting implied risk neutral densities: the role of risk premia" by P. Hördahl and D. Vestin, September 2003.
- 275 "Identifying the monetary transmission mechanism using structural breaks" by A. Beyer and R. Farmer, September 2003.
- 276 "Short-term estimates of euro area real GDP by means of monthly data" by G. Rünstler and F. Sédillot, September 2003.
- 277 "On the indeterminacy of determinacy and indeterminacy" by A. Beyer and R. Farmer, September 2003.
- 278 "Relevant economic issues concerning the optimal rate of inflation" by D. R. Palenzuela, G. Camba-Méndez and J. Á. García, September 2003.
- 279 "Designing targeting rules for international monetary policy cooperation" by G. Benigno and P. Benigno, October 2003.
- 280 "Inflation, factor substitution and growth" by R. Klump, October 2003.
- 281 "Identifying fiscal shocks and policy regimes in OECD countries" by G. de Arcangelis and S. Lamartina, October 2003.
- 282 "Optimal dynamic risk sharing when enforcement is a decision variable" by T. V. Koepl, October 2003.
- 283 "US, Japan and the euro area: comparing business-cycle features" by P. McAdam, November 2003.
- 284 "The credibility of the monetary policy 'free lunch'" by J. Yetman, November 2003.
- 285 "Government deficits, wealth effects and the price level in an optimizing model" by B. Annicchiarico, November 2003.
- 286 "Country and sector-specific spillover effects in the euro area, the United States and Japan" by B. Kaltenhaeuser, November 2003.
- 287 "Consumer inflation expectations in Poland" by T. Łyziak, November 2003.
- 288 "Implementing optimal control cointegrated I(1) structural VAR models" by F. V. Monti, November 2003.
- 289 "Monetary and fiscal interactions in open economies" by G. Lombardo and A. Sutherland, November 2003.

- 290 "Inflation persistence and robust monetary policy design" by G. Coenen, November 2003.
- 291 "Measuring the time-inconsistency of US monetary policy" by P. Surico, November 2003.
- 292 "Bank mergers, competition and liquidity" by E. Carletti, P. Hartmann and G. Spagnolo, November 2003.
- 293 "Committees and special interests" by M. Felgenhauer and H. P. Grüner, November 2003.
- 294 "Does the yield spread predict recessions in the euro area?" by F. Moneta, December 2003.
- 295 "Optimal allotment policy in the eurosystem's main refinancing operations?" by C. Ewerhart, N. Cassola, S. Ejerskov and N. Valla, December 2003.
- 296 "Monetary policy analysis in a small open economy using bayesian cointegrated structural VARs?" by M. Villani and A. Warne, December 2003.
- 297 "Measurement of contagion in banks' equity prices" by R. Gropp and G. Moerman, December 2003.
- 298 "The lender of last resort: a 21st century approach" by X. Freixas, B. M. Parigi and J.-C. Rochet, December 2003.
- 299 "Import prices and pricing-to-market effects in the euro area" by T. Warmedinger, January 2004.
- 300 "Developing statistical indicators of the integration of the euro area banking system" by M. Manna, January 2004.
- 301 "Inflation and relative price asymmetry" by A. Rátfai, January 2004.
- 302 "Deposit insurance, moral hazard and market monitoring" by R. Gropp and J. Vesala, February 2004.
- 303 "Fiscal policy events and interest rate swap spreads: evidence from the EU" by A. Afonso and R. Strauch, February 2004.
- 304 "Equilibrium unemployment, job flows and inflation dynamics" by A. Trigari, February 2004.
- 305 "A structural common factor approach to core inflation estimation and forecasting" by C. Morana, February 2004.
- 306 "A markup model of inflation for the euro area" by C. Bowdler and E. S. Jansen, February 2004.
- 307 "Budgetary forecasts in Europe - the track record of stability and convergence programmes" by R. Strauch, M. Hallerberg and J. von Hagen, February 2004.
- 308 "International risk-sharing and the transmission of productivity shocks" by G. Corsetti, L. Dedola and S. Leduc, February 2004.
- 309 "Monetary policy shocks in the euro area and global liquidity spillovers" by J. Sousa and A. Zaghini, February 2004.
- 310 "International equity flows and returns: A quantitative equilibrium approach" by R. Albuquerque, G. H. Bauer and M. Schneider, February 2004.
- 311 "Current account dynamics in OECD and EU acceding countries – an intertemporal approach" by M. Bussière, M. Fratzscher and G. Müller, February 2004.

- 312 “Similarities and convergence in G-7 cycles” by F. Canova, M. Ciccarelli and E. Ortega, February 2004.
- 313 “The high-yield segment of the corporate bond market: a diffusion modelling approach for the United States, the United Kingdom and the euro area” by G. de Bondt and D. Marqués, February 2004.
- 314 “Exchange rate risks and asset prices in a small open economy” by A. Derviz, March 2004.
- 315 “Option-implied asymmetries in bond market expectations around monetary policy actions of the ECB” by S. Vähämaa, March 2004.
- 316 “Cooperation in international banking supervision” by C. Holthausen and T. Rønde, March 2004.
- 317 “Fiscal policy and inflation volatility” by P. C. Rother, March 2004.
- 318 “Gross job flows and institutions in Europe” by R. Gómez-Salvador, J. Messina and G. Vallanti, March 2004.
- 319 “Risk sharing through financial markets with endogenous enforcement of trades” by T. V. Köppl, March 2004.
- 320 “Institutions and service employment: a panel study for OECD countries” by J. Messina, March 2004.
- 321 “Frequency domain principal components estimation of fractionally cointegrated processes” by C. Morana, March 2004.
- 322 “Modelling inflation in the euro area” by E. S. Jansen, March 2004.
- 323 “On the indeterminacy of New-Keynesian economics” by A. Beyer and R. E. A. Farmer, March 2004.
- 324 “Fundamentals and joint currency crises” by P. Hartmann, S. Straetmans and C. G. de Vries, March 2004.
- 325 “What are the spill-overs from fiscal shocks in Europe? An empirical analysis” by M. Giuliodori and R. Beetsma, March 2004.
- 326 “The great depression and the Friedman-Schwartz hypothesis” by L. Christiano, R. Motto and M. Rostagno, March 2004.
- 327 “Diversification in euro area stock markets: country versus industry” by G. A. Moerman, April 2004.
- 328 “Non-fundamental exchange rate volatility and welfare” by R. Straub and I. Tchakarov, April 2004.
- 329 “On the determinants of euro area FDI to the United States: the knowledge-capital-Tobin's Q framework, by R. A. De Santis, R. Anderton and A. Hijzen, April 2004.
- 330 “The demand for euro area currencies: past, present and future” by B. Fischer, P. Köhler and F. Seitz, April 2004.
- 331 “How frequently do prices change? evidence based on the micro data underlying the Belgian CPI” by L. Aucremanne and E. Dhyne, April 2004.
- 332 “Stylised features of price setting behaviour in Portugal: 1992-2001” by M. Dias, D. Dias and P. D. Neves, April 2004.

- 333 “The pricing behaviour of Italian firms: New survey evidence on price stickiness” by S. Fabiani, A. Gattulli and R. Sabbatini, April 2004.
- 334 “Is inflation persistence intrinsic in industrial economies?” by A. T. Levin and J. M. Piger, April 2004.
- 335 “Has eura-area inflation persistence changed over time?” by G. O'Reilly and K. Whelan, April 2004.
- 336 “The great inflation of the 1970s” by F. Collard and H. Dellas, April 2004.
- 337 “The decline of activist stabilization policy: Natural rate misperceptions, learning and expectations” by A. Orphanides and J. C. Williams, April 2004.
- 338 “The optimal degree of discretion in monetary policy” by S. Athey, A. Atkeson and P. J. Kehoe, April 2004.
- 339 “Understanding the effects of government spending on consumption” by J. Galí, J. D. López-Salido and J. Vallés, April 2004.
- 340 “Indeterminacy with inflation-forecast-based rules in a two-bloc model” by N. Batini, P. Levine and J. Pearlman, April 2004.
- 341 “Benefits and spillovers of greater competition in Europe: A macroeconomic assessment” by T. Bayoumi, D. Laxton and P. Pesenti, April 2004.
- 342 “Equal size, equal role? Interest rate interdependence between the euro area and the United States” by M. Ehrmann and M. Fratzscher, April 2004.
- 343 “Monetary discretion, pricing complementarity and dynamic multiple equilibria” by R. G. King and A. L. Wolman, April 2004.
- 344 “Ramsey monetary policy and international relative prices” by E. Faia and T. Monacelli, April 2004.
- 345 “Optimal monetary and fiscal policy: A linear-quadratic approach” by P. Benigno and M. Woodford, April 2004.
- 346 “Perpetual youth and endogenous labour supply: a problem and a possible solution” by G. Ascari and N. Rankin, April 2004.
- 347 “Firms’ investment decisions in response to demand and price uncertainty” by C. Fuss and P. Vermeulen, April 2004.
- 348 “Financial openness and growth: Short-run gain, long-run pain?” by M. Fratzscher and M. Bussiere, April 2004.
- 349 “Estimating the rank of the spectral density matrix” by G. Camba-Mendez and G. Kapetanios, April 2004.
- 350 “Exchange-rate policy and the zero bound on nominal interest rates” by G. Camba-Mendez and G. Kapetanios, April 2004.

351 “Interest rate determination in the interbank market” by V. Gaspar, G. P. Quirós and H. R. Mendizábal, April 2004.

