

Pegkas, Panagiotis

Article

The effect of government debt and other determinants on economic growth: The Greek experience

Economies

Provided in Cooperation with:

MDPI – Multidisciplinary Digital Publishing Institute, Basel

Suggested Citation: Pegkas, Panagiotis (2018) : The effect of government debt and other determinants on economic growth: The Greek experience, *Economies*, ISSN 2227-7099, MDPI, Basel, Vol. 6, Iss. 1, pp. 1-19,
<https://doi.org/10.3390/economies6010010>

This Version is available at:

<https://hdl.handle.net/10419/197062>

Standard-Nutzungsbedingungen:

Die Dokumente auf EconStor dürfen zu eigenen wissenschaftlichen Zwecken und zum Privatgebrauch gespeichert und kopiert werden.

Sie dürfen die Dokumente nicht für öffentliche oder kommerzielle Zwecke vervielfältigen, öffentlich ausstellen, öffentlich zugänglich machen, vertreiben oder anderweitig nutzen.

Sofern die Verfasser die Dokumente unter Open-Content-Lizenzen (insbesondere CC-Lizenzen) zur Verfügung gestellt haben sollten, gelten abweichend von diesen Nutzungsbedingungen die in der dort genannten Lizenz gewährten Nutzungsrechte.

Terms of use:

Documents in EconStor may be saved and copied for your personal and scholarly purposes.

You are not to copy documents for public or commercial purposes, to exhibit the documents publicly, to make them publicly available on the internet, or to distribute or otherwise use the documents in public.

If the documents have been made available under an Open Content Licence (especially Creative Commons Licences), you may exercise further usage rights as specified in the indicated licence.



<https://creativecommons.org/licenses/by/4.0/>

Article

The Effect of Government Debt and Other Determinants on Economic Growth: The Greek Experience

Panagiotis Pegkas

Department of Computer Science, School of Science, University of Thessaly, 35100 Lamia, Greece; papeg@cs.uth.gr

Received: 12 December 2017; Accepted: 25 January 2018; Published: 5 February 2018

Abstract: This study empirically investigates the relationship between economic growth and several factors (investment, private and government consumption, trade openness, population growth and government debt) in Greece, where imbalances persist several years after the financial crisis. The results reveal a long-run relationship between variables. Investment as private and government consumption and trade openness affect positively growth. On the other hand, there is a negative long-run effect of government debt and population growth on growth. Furthermore, the study addresses the issue of break effects between government debt and economic growth. The results indicate that the relationship between debt and growth depends on the debt breaks. Specifically, at debt levels before 2000, increases in the government debt-to-GDP ratio are associated with insignificant effects on economic growth. However, as government debt rises after 2000, the effect on economic growth diminishes rapidly and the growth impacts become negative. The challenge for policy makers in Greece is to halt the rising of government debt by keeping a sustainable growth path. Fiscal discipline should be combined with the implementation of coherent, consistent and sequential growth-enhancing structural reforms.

Keywords: government debt; economic growth; investment; consumption; trade; Greece

JEL Classification: C24; C32; H63; O11; O40

1. Introduction

The rising government debt levels and its interactions with other determinants of economic growth, especially in the aftermath of global financial crisis, have necessitated the revival of the academic and policy debate on the impact of growing debt levels on growth (Jiménez-Rodríguez and Rodríguez-López 2015; Bökemeier and Greiner 2015; Swamy 2015a, 2015b). In advanced economies, government debt has been increased close to 50 percentage points since the start of the global financial crisis (International Monetary Fund 2016). Many countries in the Eurozone (especially peripheral countries) are struggling with a combination of high levels of indebtedness, budget deficits and frail growth.

The Greek crisis after the outbreak of the global financial crisis has occupied a central role in the public debates around the world. Greece, having longitudinal underlying pathologies, faced serious economic problems (fiscal, financial, structural, imbalances etc.). These problems have influenced other determinants of economic growth such as investment, consumption, trade openness and population growth. As a result, high levels of government debt made Greece the “weak link” of the economic crisis in the Eurozone. For that reason, Greece entered into economic adjustment programs and followed economic austerity policies. Greece entered the crisis of 2008 with the highest debt-to-GDP ratio among the economies of the Eurozone and had, together with Italy, the highest level of tax evasion and the

biggest shadow economy within the EMU (Schneider 2011). Also, the Greek government deficit ratio increased rapidly from -6.7% of GDP in 2007 to -15.1% of GDP in 2009, while the debt-to-GDP ratio surged from 103 to 126.7% of GDP. Furthermore, rigidities in Greece's product and labor markets have increased the cost of adjustment to large pre-crisis economic imbalances. Unit labor costs have increased far more in Greece than in all other EMU countries and under fixed exchange rates, this erodes competitiveness (International Monetary Fund 2013a, 2013b). Generally, in Greece during recent decades, some structural reforms and adjustments were implemented, more or less successfully. However, the Greek economy passed into the 21st century facing a number of unsolved problems, mainly high government deficit and debt.

The purpose of this study is to investigate the impact of government debt and other economic determinants (investment, private and public consumption, trade openness and population growth) on the growth of the Greek economy, by using the Autoregressive Distributed Lag (ARDL) model and the Vector Autoregressive Model (VAR) methodology. Also, this study explores the critical turning point at which the excessive government debt levels have a positive or negative impact on economic growth by using multiple structural break effects. It applies the methodology of Bai and Perron (1998, 2003) and the results reveal some evidence in favor of a negative relationship between debt and growth in Greece. The study compares the results from a linear macroeconomic model and a multiple structural break model, including the period of financial crisis. Thus, the results provide a comparison for the Greek economy, which may improve decision-making by policy makers.

The rest of the paper is organized as follows. Section 2 reviews the empirical literature. Section 3 presents the empirical analysis, explains methodology and presents sources and data. Section 4 presents the econometric analysis and reports and discusses the empirical results based on econometric analysis. Section 5 presents the concluding remarks and policy implication.

Review of Empirical Literature

Many studies of the empirical literature, especially after the financial crisis, focus on the impact of public debt on economic growth. First, the studies that have investigated the case of many countries by using cross-sectional data or panel data in their econometric analysis are presented. The basic findings from the empirical studies can be summarized as follows:

Pattillo et al. (2004) investigated whether debt affects growth for 61 developing countries over the period 1996–1998. The result showed that the negative impact of high debt on growth operates through a strong negative effect on physical capital accumulation and on growth. They also found positive effects of investment on economic growth. Schclarek (2004), focusing on a panel of 59 developing and 24 advanced countries over the period 1970–2002, concludes that, for developing countries, there is a negative relation between debt and growth, but he does not find any significant relation between government debt and economic growth in advanced countries. Also, the results show that investments and exports have a positive contribution to GDP growth. Sen et al. (2007) studied the impact of debt on economic growth of Argentina, Brazil, Columbia, Venezuela, Mexico, China, India, Indonesia, Philippines, Korea and Thailand. They came to the conclusion that debt negatively affects economic growth in Latin American and Asian countries. Misztal (2010), for a sample of EU Member States over the period 2000–2010, concluded that an increase in public debt by 1% in these countries has led, on average, to a reduction in GDP by 0.3%, while a GDP growth by 1% resulted in a reduction of public debt, on average, by 0.4%. Kumar and Woo (2010), for a panel of 38 developed and emerging countries over the period 1970–2007, found that a 10% increase of public debt is associated with a 0.2% decrease of GDP growth, the impact being stronger in emerging market economies and weaker in developed ones. Drine and Nabi (2010) for a panel of 27 developing countries for the period of 1970–2005 found that an increase in external public debt reduces production efficiency. Also, the results indicate that output is positively responsive to investment. Afonso and Jalles (2013) use a panel of 155 countries to assess the links between growth, productivity and government debt. They found a negative effect of the debt-to-GDP to economic growth and that financial crisis is detrimental for growth, while fiscal

consolidation promotes growth. Afonso and Alves (2015) use a panel of 14 European countries to assess the links between growth, productivity and government debt. They found a negative effect of the debt-to-GDP to economic growth -0.04 and -0.03 and that financial crisis is detrimental for growth, while fiscal consolidation promotes growth.

Also, the literature includes studies that have investigated the case of one country by using time series data in their econometric analysis. Anyanwu and Erhijakpor (2004) studied the impact of debt on economic growth of Nigeria over the period 1970–2003. The study reported that debt has a significant negative impact on economic growth. El-Mahdy and Torayeh (2009) investigated the debt and growth relationship for Egypt's economy using data spanning 1981–2006 and the study revealed a robust negative relationship between debt and growth. Ogunmuyiwa (2011) evaluated the effect of debt on Nigeria's economic growth from 1970–2007. The results revealed a weak and insignificant relationship between debt and growth. Shah and Shahida (2012) investigated the effect of the public debt on economic growth of Bangladesh for the period 1980–2012 and found no impact of debt on economic growth. Tchereni et al. (2013) analyzed the effect of debt on Malawi's economic growth over the period 1975–2003. They reported a statistically insignificant negative relationship between debt and economic growth in Malawi.

Also, some empirical studies sought to pin down and explain the relationship between public debt and growth, focusing on models with thresholds and breaks estimates. Cuestas et al. (2014) argue that government debt-to-GDP is likely to have a negative impact on the economic growth and also high levels of government debt are likely to have nonlinear effects on growth and that it becomes relevant only after a certain threshold value. Reinhart and Rogoff (2010) and Reinhart, Reinhart and Rogoff (Reinhart et al. 2012) argue that higher levels of government debt are negatively correlated with economic growth, but there is no link between debt and growth when government debt is below 90% of GDP. Supporting the study, other studies confirmed that the turning point beyond which growth gradually decreases is around 100% of GDP (Checherita-Westphal and Rother 2012; Furceri and Zdzienicka 2012). However, other studies could not identify a robust negative relationship between government debt and growth (Pescatori et al. 2014; Egert 2015; Eberhardt and Presbitero 2015).

The basic findings from the empirical studies can be summarized as follows: the majority of the studies have found a negative relationship between public debt and economic growth.

2. Empirical Analysis

2.1. Methodology

In our model, in order to determine the effect of debt-to-GDP ratio in GDP, we add on the right-hand side of equation some growth control variables, which include investment, private consumption, public consumption, trade openness and population growth. The first model specification as presented below assumes a linear relationship between debt-to-GDP and growth.

$$Y_t = \alpha + \beta Debt_t + \gamma X'_t + \varepsilon_t, \quad (1)$$

Y stands for real GDP in billion Euros, X is the GDP control variables (investment, private consumption, public consumption, trade openness and population growth). Debt represents the debt-to-GDP and ε_t is the error term.

2.2. Sources and Data

Data on GDP, investment, private and government consumption, trade openness, population and debt-to-GDP are annual and were taken from AMECO database (AMECO 2017). GDP is measured at 2010 constant prices and investment is the gross fixed capital formation at 2010 constant prices. Private consumption is the private final consumption expenditure at 2010 prices. Government consumption is the final consumption expenditure of general government at 2010 prices. Trade openness is the sum of exports and imports of goods and services to GDP ratio, measured at 2010 constant prices. Debt-to-GDP is the ratio between Greece's government debt and its GDP for the year.

Table 1 provides the descriptive statistics on the variables employed in the study. The data show that there are substantial variations for all variables over the examined period. Specifically, over the period 1970–2016, a significant GDP increase is observed. The average GDP in Greece was equal to 165 billion Euros and varies from 89 to 250. The average annual growth rate of GDP, over the whole period, was approximately 1.7% in real terms, but there were periods of very high growth rates (especially in the 1970s and 2000s) and periods of stagnation (particularly over the 2010–2016 period). The average debt-to-GDP is equal to 81. During the examined time period the debt-to-GDP has expanded rapidly. It increased from almost 16% in 1970, to 180% in 2016, exhibiting an average annual growth rate of 5.6%. The highest growth rate was during the 1980s and the lowest during the 2000s. The average investment is equal to 33 billion Euros and it varies from 21 to 62. The average annual growth rate of investment rate was 0.2% for the entire examined time period; with the highest growth rate seen during the 1990s and the lowest (negative) during the 1980s and the period 2010–2016. The average private consumption is equal to 105 and it varies from 47 to 171. Private consumption growth rate averaged 2.3% over the period 1970–2016. The highest growth rate occurred during the 1970s and the lowest (negative) during the period 2010–2016. The average government consumption is equal to 35 and it varies from 16 to 53. Government consumption increased by an average growth rate of 2.1% for the entire examined time period. The highest growth rate occurred during the 1970s and the lowest (negative) during the period 2010–2016. The average trade openness to GDP ratio is equal to 36 and it varies from 13 to 64. Trade openness experienced an average annual growth increase of 3.7% of GDP over the entire time period; with the highest growth rate seen during the 1970s and the lowest (negative) during the 2000s. The average population is equal to 10.244 million persons and it varies from 8.792 to 11.121. Population increased by an average annual growth of 0.4% over the period 1970–2016; with the highest growth rate seen during the 1970s and the lowest (negative) during the period 2010–2016. In order to compare the data, we concluded that in all the decades the GDP growth rate movements have been followed by similar movements in investment, private and government consumption, while debt-to-GDP growth rate were in the opposite direction. It is also worth mentioning that in the 2000s, when GDP had a significant positive growth rate, the trade openness had its lowest growth rate. On the other hand, during the period of economic stagnation (2010–2016) trade openness increased by an average annual growth of 3.4 per cent.

Table 1. Descriptive Statistics.

	GDP	Investment	Private	Government	Trade	Population	Debt
Variables Levels							
Min	89	21	47	16	13	8792	16
Max	250	62	171	53	64	11,121	180
Standard Deviation	43	10	35	9	16	743	51
Average 1970–2016	165	33	105	35	36	10,244	81
Average 1970–1979	114	31	60	22	17	9092	19
Average 1980–1989	140	26	83	32	25	9893	44
Average 1990–1999	162	30	107	35	35	10,520	92
Average 2000–2009	225	49	150	46	53	10,969	107
Average 2010–2016	194	26	134	43	59	10,962	170
Variables Growth Rates							
Min	−9.1	−26	−9.7	−7	−16	−0.7	−17.5
Max	10	22	8.8	12	22	1.6	33
Standard Deviation	4.1	11.2	3.8	4.4	6.5	0.5	10.2
Average 1970–2016	1.7	0.2	2.3	2.1	3.7	0.4	5.6
Average 1970–1979	5.1	3.5	5.8	6.9	5.4	0.9	3.9
Average 1980–1989	0.8	−1.7	2.0	1.4	3.5	0.6	11.3
Average 1990–1999	2.1	4.3	2.7	1.1	5.3	0.6	4.5
Average 2000–2009	2.8	2.8	3.1	3.4	0.9	0.3	2.7
Average 2010–2016	−3.6	−10.9	−3.6	−3.9	3.4	−0.4	5.4

Note: The data selected from AMECO database for the time period 1970–2016. The amounts are in €billion. GDP is the real GDP, investment is the gross fixed capital formation, private is the private final consumption expenditure, government is the final consumption expenditure of general government, trade is the trade openness-to-GDP ratio, population is the population number in persons and debt is the debt-to-GDP ratio. All data are obtained from Authors' calculations.

Moreover, Figures 1 and 2 present the movement of debt and other determinants of the Greek economy over the period 1970–2016. Over the period 1995–2008, GDP has significantly increased, but after 2009 it rapidly decreased. The Greek economy has remained in recession during the period 2009–2016 and the recovery in 2014 was limited and soon fizzled out. With few exceptions for some years, investment, private and government consumption, trade openness and population have followed a similar course for the period 1970–2016. On the other hand debt-to-GDP has significantly increased over the period 1995–2008, but it rapidly increased during the period 2009–2016. Therefore, the graphs show that the economic crisis has a significant negative effect on economic growth as having been mentioned by the studies of [Checherita-Westphal and Rother \(2012\)](#) and [Gómez-Puig and Sosvilla-Rivero \(2015\)](#).

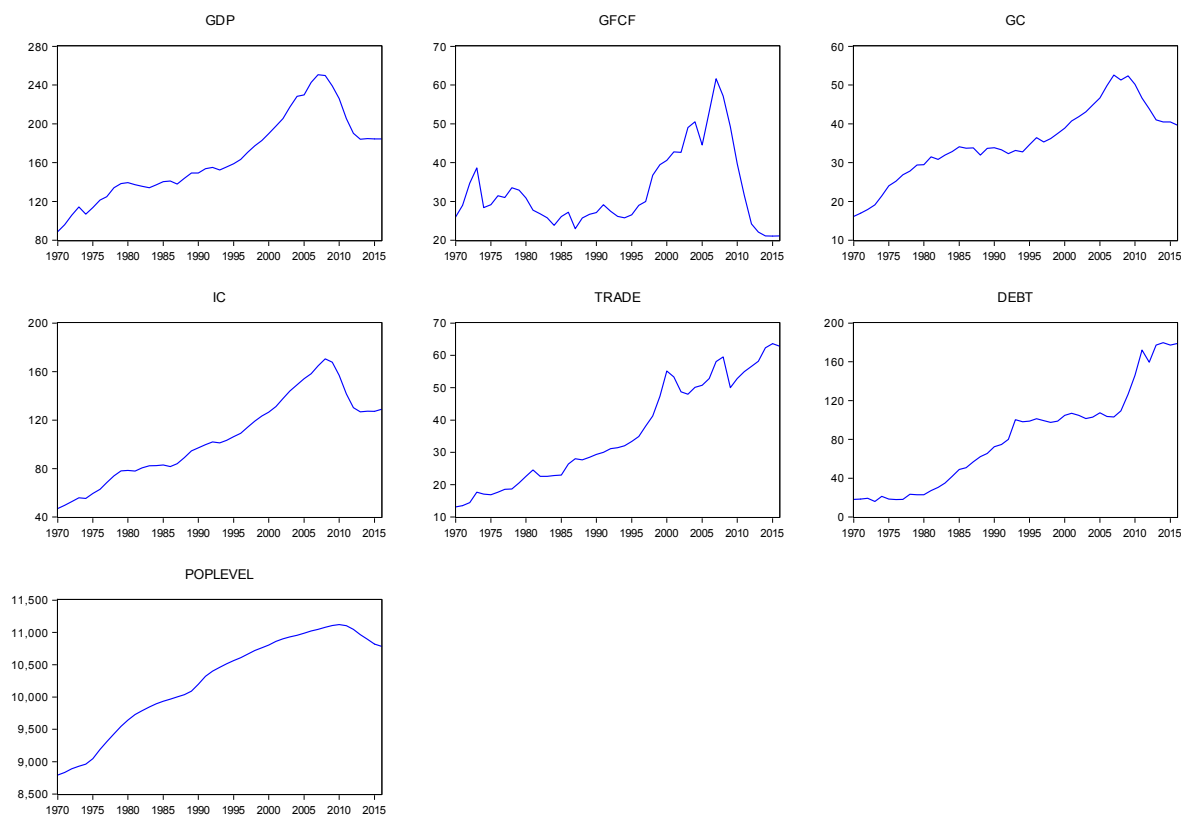


Figure 1. Levels of the variables. (Source: The data selected from AMECO database for the time period 1970–2016. GDP is the real GDP, GFCF is the gross fixed capital formation, GC is the final consumption expenditure of general government, IC is the private final consumption expenditure. The amounts for these variables expressed in €billion. Debt is the debt-to-GDP ratio, trade is the trade openness-to-GDP ratio and pop is the population number in persons. All data are obtained from Authors' calculations.).

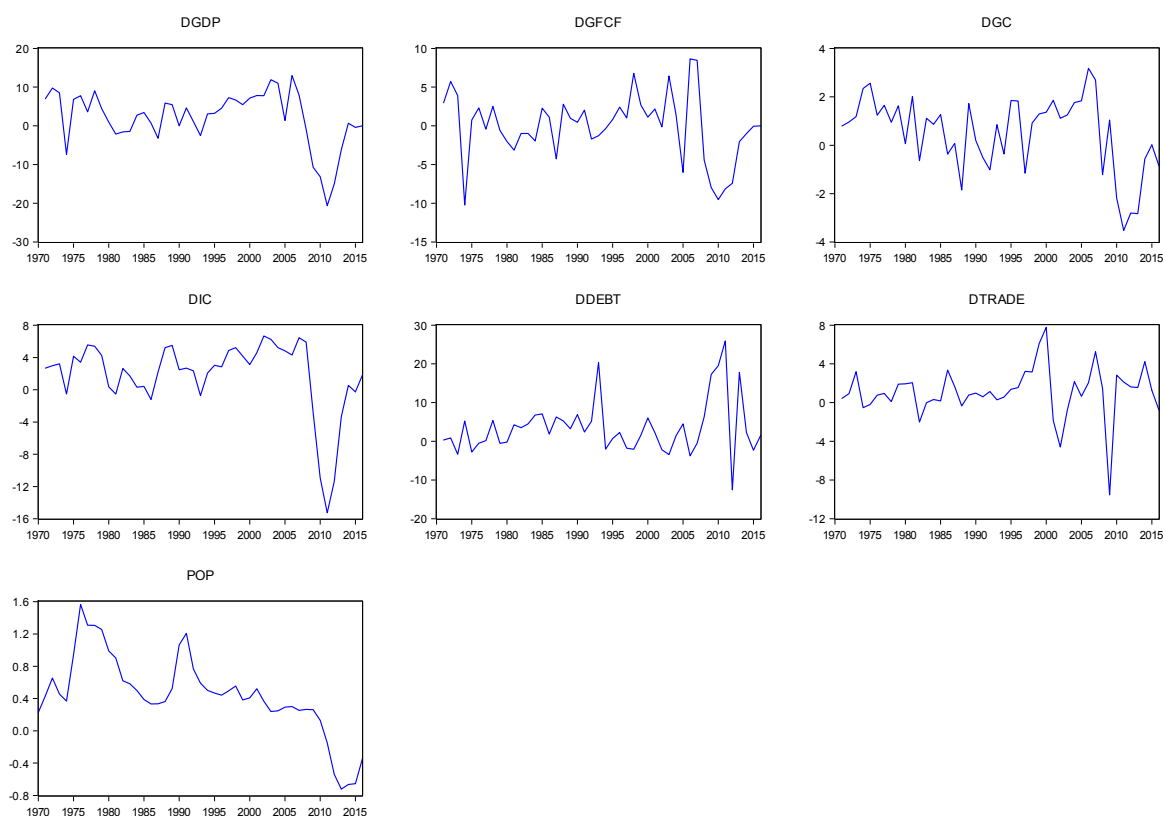


Figure 2. Growth rates of the variables. (Source: The data selected from AMECO database for the time period 1970–2016. D indicates that the variables are expressed in growth rates. GDP is the real GDP, GFCF is the gross fixed capital formation, GC is the final consumption expenditure of general government, IC is the private final consumption expenditure, debt is the debt-to-GDP ratio, trade is the trade openness-to-GDP ratio and pop is the population number in persons. All data are obtained from Authors' calculations.).

3. Econometric Analysis

This section focuses on the effect of government debt and investment, private consumption, public consumption, trade openness and population growth on economic growth, testing for cointegration so as to reveal any underlying long-run relationships among the variables. Then, we proceed with estimating a VAR model that reveals the impulse response functions and variance decomposition to investigate the dynamic relationships between the variables.

3.1. Unit Root Tests

Initially, the stationarity of the variables (GDP, investment, private consumption, public consumption, trade openness, population growth and debt-to-GDP) is checked. The stationarity of the data set is examined using the Augmented Dickey-Fuller (ADF) (Dickey and Fuller 1979, 1981) test and the Perron (1997) structural break tests. We test for the presence of unit roots and identify the order of integration for each variable in levels and first differences. The variables are specified, including intercept and including intercept and trend. The optimal lag length of the regressions is determined by Akaike (1974) criterion. The null hypothesis is non-stationary for both tests. Unit root test results are given in Table 2 and show that the null hypothesis of unit roots is not rejected for the levels of the variables, except for the variable of population growth rate. On the contrary, the tests reject the null hypothesis for the first differences, for all variables. Therefore, we conclude that each variable is, in fact, integrated of order one, i.e., $I(1)$ and the variable of population growth rate is $I(0)$.

Table 2. Unit roots tests.

Variables	Tests		ADF Test		Structural Break ADF Test	
	With Intercept	With Intercept and Trend	With Intercept	With Intercept and Trend	With Intercept	With Intercept and Trend
$\ln GDP_t$	-1.69	-2.17	-2.89	-3.11	-2.89	-3.11
$\Delta \ln GDP_t$	-2.94 **	-2.89 ***	-4.50 **	-5.32 **	-4.50 **	-5.32 **
$\ln GFCF_t$	-1.92	-1.78	-2.89	-2.60	-2.89	-2.60
$\Delta \ln GFCF_t$	-4.69 ***	-4.70 ***	-6.42 ***	-6.32 ***	-6.42 ***	-6.32 ***
$\ln IC_t$	-1.46	-3.23	-2.47	-4.77	-2.47	-4.77
$\Delta \ln IC_t$	-3.59 ***	-3.74 **	-5.89 ***	-6.43 ***	-5.89 ***	-6.43 ***
$\ln GC_t$	-2.20	-2.60	-3.25	-2.96	-3.25	-2.96
$\Delta \ln GC_t$	-3.80 ***	-4.23 ***	-5.79 ***	-5.69 ***	-5.79 ***	-5.69 ***
$\ln TRADE_t$	-0.23	-3.28	-2.29	-7.02 ***	-2.29	-7.02 ***
$\Delta \ln TRADE_t$	-5.89 ***	-5.84 ***	-6.92 ***	-7.25 ***	-6.92 ***	-7.25 ***
$\ln POP_t$	-1.98	-3.58 **	-3.38	-5.60 ***	-3.38	-5.60 ***
$\Delta \ln POP_t$	-4.64 ***	-4.58 ***	-5.95 ***	-5.71 ***	-5.95 ***	-5.71 ***
$\ln DEBT_t$	0.73	-1.94	-1.53	-3.41	-1.53	-3.41
$\Delta \ln DEBT_t$	-6.17 ***	-6.29 ***	-7.65 ***	-7.69 ***	-7.65 ***	-7.69 ***

Notes: Selection of lags based on Akaike information criterion; ***, ** indicates the rejection of the null hypothesis of non-stationarity at 1% and 5% level of significance, respectively. For ADF MacKinnon (1996) critical values have been used for rejection of hypothesis of a unit root. For structural break test critical values are those reported in Perron (1989). GDP_t is the real GDP, $GFCF_t$ is the gross fixed capital formation, IC_t is the private final consumption expenditure, GC_t is the final consumption expenditure of general government, $TRADE_t$ is the trade openness, POP_t is the population growth rate and $DEBT_t$ is the debt-to-GDP ratio. The data selected from AMECO database for the time period 1970–2016.

3.2. Cointegration Tests

Next, the cointegration test was conducted by using the autoregressive distributed lag (ARDL) procedure developed by Pesaran et al. (2001). In our study, the ARDL cointegration approach is applied because it has some advantages in comparison with other cointegration methods. Unlike other cointegration techniques, the ARDL does not impose a restrictive assumption that the variables under study must be integrated of the same order. In other words, we can test for cointegration among variables regardless of whether the underlying regressors are integrated of order $I(1)$ or order zero $I(0)$. Secondly, while other cointegration techniques are sensitive to the size of the sample, the ARDL test is suitable even if the sample size is small. Thirdly, the ARDL technique generally provides unbiased estimates of the long-run model and valid statistics even when some of the regressors are endogenous. The first stage of the ARDL approach involved the F-test in which the asymptotic distribution of the F-statistic is non-standard under the null hypothesis of no cointegrating relationship between the examined variables, irrespective of whether the explanatory variables are purely $I(0)$ or $I(1)$. If the F-statistic exceeds the lower and upper critical bound, the null hypothesis of no cointegrating relationship can be rejected. Next, the ARDL approach involves an estimation of the coefficients on the long-run cointegrating relationship and the corresponding error correction model. The lagged error correction term (e_{t-1}) derived from the error correction model is an important element in the dynamics of the cointegrated system. The size and statistical significance of the error-correction term measures the extent to which each dependent variable has the tendency to return to its long-run equilibrium.

In light of the evidence of the time series being either stationary or first differences stationary variables, we conduct the bounds test for cointegration on our model. The null hypothesis of a non-cointegrating relation is tested by performing a joint significance test on the lagged level variables. The estimated F-statistic is obtained from the estimates manage to reject the joint null hypothesis of no cointegration since it exceeds the lower and upper critical bound albeit at 1% significance level. This evidence permits us to proceed with estimating our empirical ARDL model. The results of bounds test are reported in Table 3.

Table 3. Bounds test for cointegration.

F-Statistic	Significance	I(0)	I(1)
4.93	10%	2.12	3.23
	5%	2.45	3.61
	2.5%	2.75	3.99
	1%	3.15	4.43

Notes: The lag length was selected based on the Akaike criterion. Critical Values are cited from Pesaran et al. (2001) and Narayan's (Narayan 2005) table: Unrestricted intercept and no trend, for 46 observations. The number of regressors is 6.

Table 4 present our empirical estimates of ARDL model. The ARDL model passes all the standard diagnostic tests for residual autocorrelation, normality and heteroskedasticity. First, it presents the long-run estimates and next reports the short-run and error correction estimates of the estimate regression. Beginning with the long-run results, it can be concluded that in the long-run there are significant positive effects of investment, private and government consumption and trade openness on economic growth. A 1% increase of investment results in an increase of economic growth by about 0.48%. A 1% increase of private consumption will foster economic growth by about 0.87%. Also, a 1% increase of government consumption and trade openness will boost economic growth by about 0.68% and 0.75%, respectively. On the opposite direction, debt-to-GDP has a negative impact on economic growth. A 1% increase of government debt results in a decrease of economic growth by about 0.17%. Also, population growth has positive significant effects on economic growth. The results are consistent with the studies mentioned in the literature review (Pattillo et al. 2004; Schclarek 2004; Sen et al. 2007; Misztal 2010; Kumar and Woo 2010; Drine and Nabi 2010; Afonso and Jalles 2013; Afonso and Alves 2015; Anyanwu and Erhijakpor 2004; El-Mahdy and Torayeh 2009; Ogunmuyiwa 2011; Shah and Shahida 2012; Tchereni et al. 2013).

Table 4. Long-run and short-run ARDL estimates.

Variables	Coefficient	p-Value
Long-Run Estimates		
Investment	0.48	0.00 ***
Private consumption	0.87	0.09 *
Government consumption	0.68	0.00 ***
Trade Openness to GDP ratio	0.75	0.00 ***
Government debt to GDP ratio	−0.17	0.03 **
Population	3.55	0.00 ***
Short-Run Estimates		
ΔInvestment	0.31	0.00 ***
ΔPrivate consumption	1.14	0.00 ***
ΔGovernment consumption	−0.16	0.64
ΔTrade Openness to GDP ratio	0.59	0.00 ***
ΔGovernment debt to GDP ratio	−0.09	0.00 ***
ΔPopulation	−0.83	0.39
ECT(−1)	−0.87	0.00 ***

Notes: The dependent variable is real GDP; ***, **, *denote statistical significance at the 1%, 5% and 10% level, respectively. The ARDL model specification was estimated consistently as for the existence of the serial correlation and the heteroskedasticity by using the Newey-West HAC estimator (Newey and West 1987).

In browsing through the short-run estimates, we note that, as in the long run, there are significant positive effects of investment, private consumption and trade openness on economic growth. On the other hand, debt-to-GDP has a negative impact on economic growth. Similarly, the error correction terms produce correct negative and statistically significant estimates of −0.87. The latter result implies that about 87 percent of deviations from the steady state are corrected in each period.

3.3. Robustness Checks

In order to ensure the robustness of the ARDL model, it could be useful to evaluate the stability of the estimated parameters. To test the null hypothesis of model stability, we apply the cumulative sum of recursive residuals (CUSUM) and the CUSUM of square (CUSUMSQ) tests (Brown et al. 1975). CUSUM statistics and bands represent the bounds of the critical region for the test at the 5% significance level. The test finds parameter instability if the cumulative sum goes outside the area between the two critical lines. Figures 3 and 4 plot the results for CUSUM and CUSUMSQ tests. The results show that the plot of the CUSUM and CUSUMSQ statistic stays within the critical bounds of the 5% confidence interval, implying not rejection of the null hypothesis of stability. Therefore, that indicates the absence of any instability of the regression coefficients.

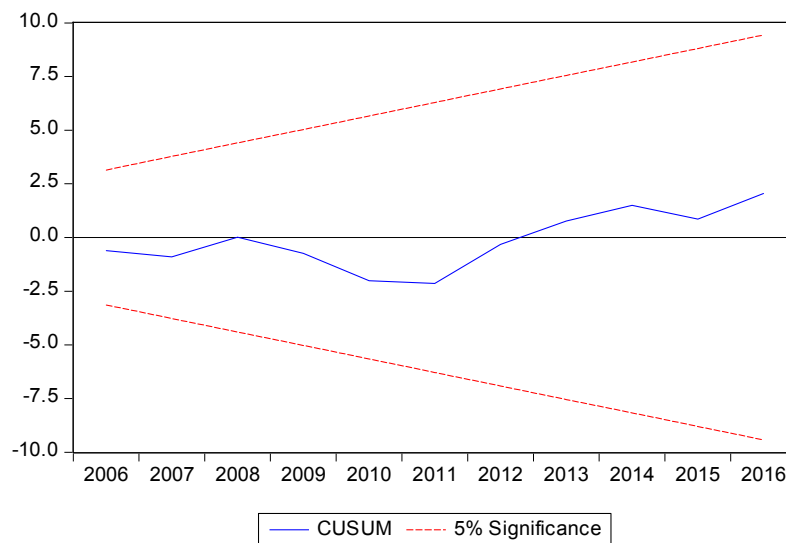


Figure 3. Plot of CUSUM Test.

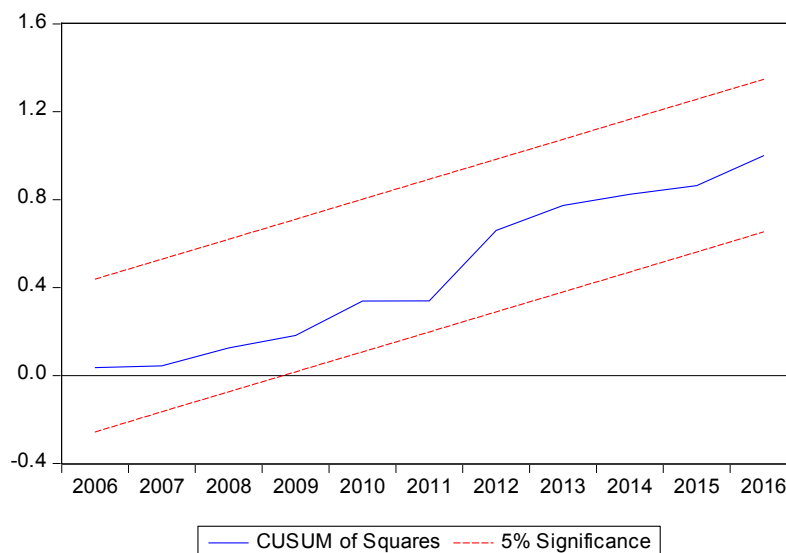


Figure 4. Plot of CUSUMSQ Test.

3.4. VAR Estimation

Once an identified long-run structure is tested and fixed, the short run dynamics follows the long-run analysis. In order to further support the short run results of ARDL model we check the short

run dynamic interactions among the variables by using a VAR model. As the main variables of our model are reported with unit roots, in VAR we take first difference for such variables account for the non-stationarity of the underlying data generating process. We estimate VAR analysis as follows:

$$X_t = \mu_t + \Phi X_{t-1} + e_t, \quad t = 1, \dots, T \text{ period} \quad (2)$$

where X_t is a vector of time series variables of real GDP, investment, private consumption, public consumption, trade openness, population growth and debt-to-GDP. Thus, Φ is a 7×7 matrix of coefficients, μ is a constant and e_t is a vector of random errors.

As a first step in the VAR estimation we shall make a choice regarding the optimal lag order j for the right-hand variables in the system of equations (Lütkepohl 2006). To determine the lag length of the VAR, three versions of the system were initially estimated: a four, a three and a two-lag version. Then, the Akaike information criterion identified one lag as optimal lag length. The VAR model passes all the standard diagnostic tests for residual autocorrelation, normality and heteroskedasticity.

Impulse Response Functions and Variance Decomposition Analysis

In order to study the dynamic properties of the model, impulse response function (IRF) analysis is applied. The IRF is the dynamic response of each dependent variable to other variables contained in the VAR model, for a standard deviation shock to the system. These functions show the effect of a one-time shock to one of the innovations on current and future values of the endogenous variables. In other words, this approach is designed to show how each variable responds over time to an earlier shock in that variable, and to shocks in other variables. The time period of IRF spreads over ten years, which is long enough to capture the dynamic interactions between GDP, investment, private consumption, public consumption, trade openness, debt-to-GDP and population growth. The IRFs are illustrated in Figure 5. First and foremost, it becomes apparent that the response of economic growth to a one standard deviation shock in investment, private consumption, public consumption and trade openness is positive, while is almost zero in population growth. On the other hand, a shock in debt-to-GDP has a negative impact on economic growth. The strongest positive impact arises from investment and private consumption to economic growth. Similarly, the response of investment, private consumption, public consumption, trade openness and population growth on a shock in economic growth is positive and substantial in magnitude. On the other hand, the response of debt-to-GDP to economic growth is negative. These results seem to be in agreement with those of the ARDL estimates.

The variance decomposition (VDC) is next estimated for each variable for a period of ten years. VDC provides information about how much of the forecast error variance for each endogenous variable in the model can be explained by each disturbance. A shock to a particular variable will affect that variable directly, but this shock will also generate variations to all other variables in the system, through the dynamic structure of the model. The VDC estimation results for 10 years ahead are presented in Table 5.

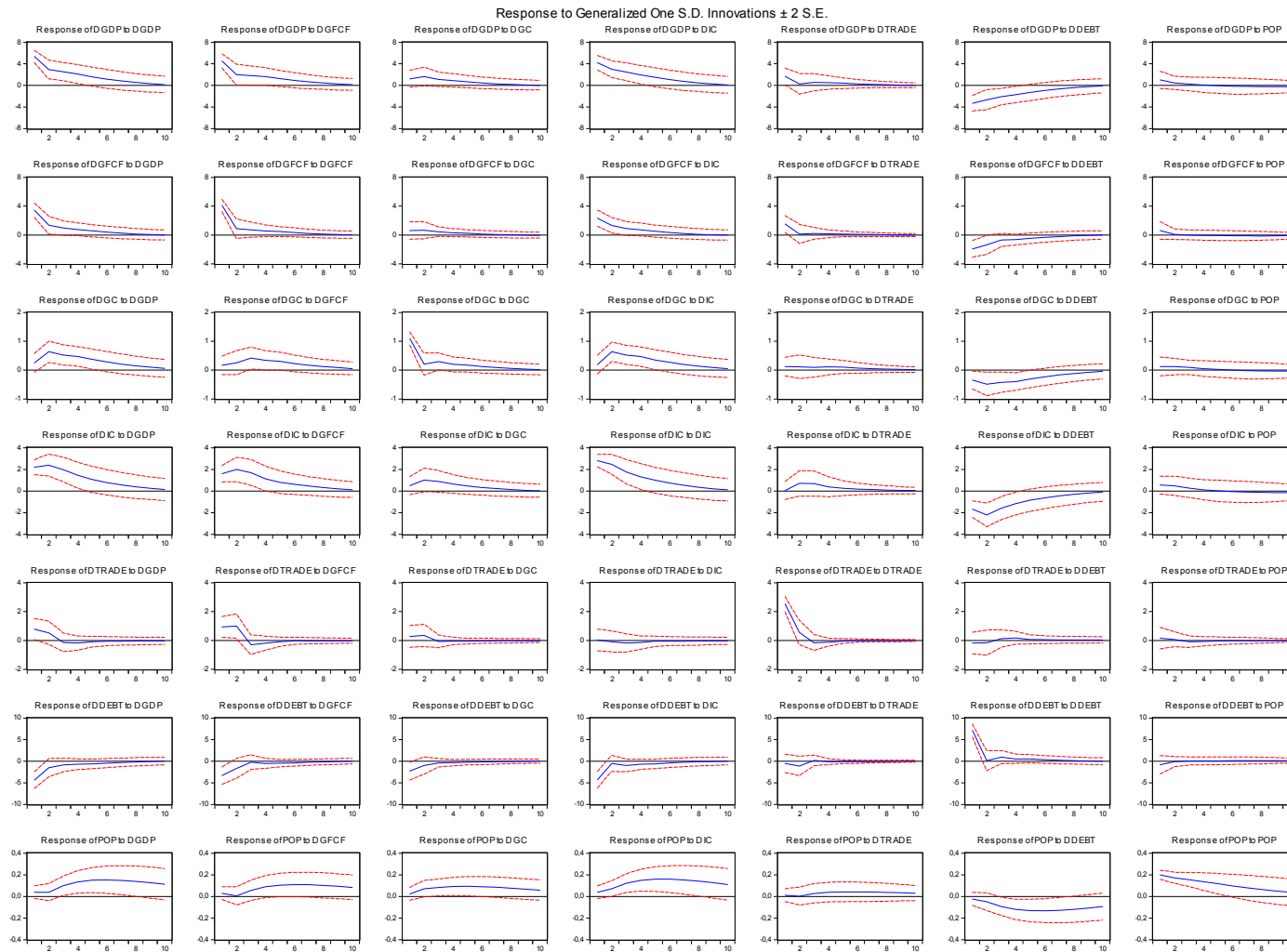


Figure 5. Impulse Response Function (IRF). (Note: D indicates that the variables are expressed in first difference. GDP is the real GDP, GFCF is the gross fixed capital formation, GC is the final consumption expenditure of general government, IC is the private final consumption expenditure, trade is the trade openness-to-GDP ratio, debt is the debt-to-GDP ratio and POP is the population number in persons. The data selected from AMECO database for the time period 1970–2016.).

The variation of GDP is largely explained by its own innovations. As the years pass, firstly private consumption and secondly public consumption and investment, gradually affect more the variation of economic growth. More precisely, 3.20, 2.41 and 2.20 percent of economic growth forecast error variance in a ten years period is explained by disturbances of private consumption, public consumption and investment, respectively. Variations in investment are mainly explained by its own innovation and by innovation of GDP and debt. About 70 percent of investment forecast error variance in a ten years period is explained by disturbances of GDP. Private consumption's variation is mainly explained by its own innovation and by innovation of GDP, public consumption and debt-to-GDP. Also, about 44 and 10 percent of public consumption forecast error variance in a ten years period is explained by disturbances of GDP and investment, respectively. Variations in trade openness are mainly explained by its own innovation and by innovation of GDP, private consumption and investment. Almost the half of debt-to-GDP's variation is mainly explained by innovation of GDP, public and private consumption and investment and the other half due to its own innovation. Finally, variations in population growth are mainly explained by its own innovation and by innovation of GDP. These overall results seem to be in agreement with those of IRF.

Table 5. Variance decomposition.

DGGDP								
Period	S.E.	DGGDP	DGFCF	DGC	DIC	DTRADE	DDEBT	POP
1	5.367109	100.0000	0.000000	0.000000	0.000000	0.000000	0.000000	0.000000
2	6.347694	92.84623	1.760195	2.080525	2.241954	0.126742	0.799041	0.145312
3	6.927271	91.17321	2.203039	2.269422	2.920510	0.134816	0.961584	0.337421
4	7.285171	90.58480	2.084714	2.394973	3.156484	0.133681	1.092130	0.553221
5	7.489706	90.28286	2.024211	2.414893	3.195489	0.130262	1.164493	0.787794
6	7.599231	90.07320	1.985235	2.410308	3.188877	0.126673	1.194684	1.021025
7	7.655610	89.89875	1.963481	2.394957	3.173027	0.125036	1.209285	1.235466
8	7.683212	89.75038	1.950323	2.381577	3.157980	0.125067	1.214877	1.419797
9	7.696252	89.62301	1.943778	2.373519	3.147749	0.126214	1.216304	1.569423
10	7.702634	89.51548	1.941767	2.371086	3.143237	0.128002	1.215795	1.684636
DGFCF								
Period	S.E.	DGGDP	DGFCF	DGC	DIC	DTRADE	DDEBT	POP
1	4.096425	71.01870	28.98130	0.000000	0.000000	0.000000	0.000000	0.000000
2	4.402530	71.13811	26.50064	0.487876	0.442362	0.070642	1.175995	0.184379
3	4.523193	71.87678	25.21977	0.717022	0.599494	0.066957	1.126364	0.393607
4	4.603660	72.17613	24.45658	0.763157	0.753317	0.064693	1.188297	0.597819
5	4.647746	72.35556	24.00109	0.788256	0.800274	0.063606	1.204096	0.787121
6	4.670818	72.39572	23.76775	0.790546	0.810918	0.063115	1.215984	0.955961
7	4.681806	72.36387	23.65639	0.788449	0.810316	0.063676	1.219029	1.098270
8	4.686954	72.30362	23.60462	0.786832	0.808550	0.064968	1.219593	1.211819
9	4.689577	72.24052	23.57954	0.787814	0.808804	0.066603	1.218931	1.297787
10	4.691333	72.18645	23.56429	0.791421	0.811713	0.068300	1.218047	1.359778
DIC								
Period	S.E.	DGGDP	DGFCF	DGC	DIC	DTRADE	DDEBT	POP
1	2.803223	61.21621	3.012368	0.027698	35.74373	0.000000	0.000000	0.000000
2	3.917754	68.45344	1.560286	1.420664	24.75366	0.634272	3.142541	0.035137
3	4.445631	72.88867	1.224660	2.032387	20.02615	0.693318	2.989842	0.144980
4	4.705276	74.45848	1.202899	2.232949	18.21958	0.630355	2.928031	0.327705
5	4.842424	75.05582	1.230080	2.295718	17.40620	0.595937	2.874501	0.541744
6	4.918858	75.29807	1.234458	2.299914	16.98039	0.577651	2.853146	0.756370
7	4.959982	75.37546	1.224482	2.289525	16.74479	0.568138	2.842443	0.955158
8	4.980793	75.35933	1.216066	2.277308	16.61799	0.563854	2.836564	1.128887
9	4.990710	75.29848	1.211244	2.268723	16.55369	0.562744	2.832539	1.272588
10	4.995409	75.22463	1.209558	2.265000	16.52266	0.563330	2.829509	1.385316

Table 5. Cont.

DGC								
Period	S.E.	DGDP	DGFCF	DGC	DIC	DTRADE	DDEBT	POP
1	1.091545	5.277675	0.572375	94.14995	0.000000	0.000000	0.000000	0.000000
2	1.370134	24.63308	14.98146	59.77871	0.318626	0.139451	0.130769	0.017898
3	1.490187	33.17324	12.76062	51.93148	1.727866	0.121743	0.218722	0.066333
4	1.578295	38.43564	11.88081	46.56751	2.262088	0.142251	0.550651	0.161050
5	1.629530	41.40207	11.16799	43.94795	2.419655	0.143281	0.634756	0.284301
6	1.659358	42.95530	10.82076	42.48031	2.471629	0.140545	0.704282	0.427177
7	1.675450	43.73099	10.62745	41.71646	2.484716	0.137978	0.730739	0.571668
8	1.683955	44.08932	10.52712	41.31125	2.483753	0.136654	0.746156	0.705754
9	1.688184	44.22783	10.47531	41.10817	2.478002	0.136407	0.752533	0.821745
10	1.690198	44.25800	10.45037	41.01038	2.472811	0.136925	0.754953	0.916561
DTRADE								
Period	S.E.	DGDP	DGFCF	DGC	DIC	DTRADE	DDEBT	POP
1	2.521706	9.598210	4.098258	0.297542	10.73614	75.26985	0.000000	0.000000
2	2.833599	11.04457	15.86635	1.413901	12.04242	59.61329	0.019415	0.000051
3	2.866339	11.05231	16.78048	1.421585	12.24731	58.44475	0.028234	0.025338
4	2.875262	11.39996	16.72113	1.414368	12.17750	58.13479	0.115582	0.036666
5	2.877253	11.48329	16.71295	1.431068	12.16157	58.05517	0.115468	0.040487
6	2.878041	11.51318	16.71605	1.433121	12.15625	58.02339	0.116348	0.041656
7	2.878555	11.53563	16.71236	1.435536	12.15516	58.00269	0.116519	0.042100
8	2.879006	11.55662	16.70854	1.436634	12.15411	57.98466	0.117223	0.042215
9	2.879337	11.57312	16.70508	1.437562	12.15289	57.97146	0.117668	0.042216
10	2.879565	11.58470	16.70275	1.438095	12.15190	57.96233	0.118010	0.042217
DDEBT								
Period	S.E.	DGDP	DGFCF	DGC	DIC	DTRADE	DDEBT	POP
1	7.129703	37.69294	0.784836	3.163484	3.313512	0.358028	54.68720	0.000000
2	7.487359	38.38591	1.642390	3.811323	4.405577	0.383010	51.30463	0.067159
3	7.618284	38.48118	3.095898	3.701890	4.363642	0.462141	49.72213	0.173113
4	7.662429	38.92401	3.084351	3.713509	4.402401	0.457619	49.15138	0.266728
5	7.696660	39.26898	3.076732	3.688974	4.411359	0.453965	48.74989	0.350096
6	7.714399	39.44756	3.062861	3.679000	4.400321	0.451893	48.53493	0.423431
7	7.722931	39.50998	3.056249	3.671556	4.392095	0.451147	48.43297	0.486001
8	7.726796	39.51780	3.053333	3.667887	4.387709	0.451332	48.38585	0.536090
9	7.728735	39.50716	3.052182	3.666794	4.385921	0.451854	48.36195	0.574144
10	7.729997	39.49432	3.052194	3.667284	4.385884	0.452460	48.34618	0.601685
DPOP								
Period	S.E.	DGDP	DGFCF	DGC	DIC	DTRADE	DDEBT	POP
1	0.198257	3.609171	0.030834	0.502624	0.495685	0.065973	0.106932	95.18878
2	0.274738	3.898276	4.090641	4.840830	4.088194	0.435083	0.070723	82.57625
3	0.335282	11.18868	5.000551	6.124407	6.135559	0.976501	0.177556	70.39675
4	0.389030	20.07450	4.827256	6.936725	7.167348	1.175895	0.379940	59.43833
5	0.435668	27.75677	4.687330	7.291766	7.613398	1.221084	0.567148	50.86250
6	0.474673	33.75991	4.554415	7.434345	7.813776	1.201727	0.711787	44.52404
7	0.506346	38.30412	4.441218	7.454374	7.893024	1.164485	0.826001	39.91678
8	0.531274	41.68822	4.337746	7.419969	7.906453	1.125745	0.913284	36.60858
9	0.550301	44.17069	4.249588	7.363296	7.886021	1.091204	0.979218	34.25998
10	0.564381	45.96156	4.177453	7.302457	7.851131	1.062615	1.027821	32.61696

Note: D indicates that the variables are expressed in first difference. DGP is the real GDP, GFCF is the gross fixed capital formation, GC is the final consumption expenditure of general government, IC is the private final consumption expenditure, TRADE is the trade openness to GDP ratio, Debt is the Debt-to-GDP ratio and POP is the population growth. The data selected from AMECO database for the time period 1970–2016.

3.5. Multiple Structural Breaks Model

Next, we apply a multi-step approach to our dataset covering the period 1970–2016 to analyze the link between government debt and growth. Following [Bai and Perron \(1998, 2003\)](#), a multiple linear regression with T periods and m potential breaks (producing m + 1 regimes) is considered by using the relationship of the following regression:

$$y_t = \beta_i \text{debt}_t + z_i X_t + u_t, \quad i = 1, \dots, m + 1, \quad t = T_{i-1} + 1, \dots, T_i \quad (3)$$

where, y_t is the explained variable real GDP; debt_t is the debt-to-GDP and X_t are the explanatory variables (investment, private consumption, public consumption, trade openness and population growth; β_i and z_i are the corresponding vectors of regime-dependent coefficients for $i = 1, \dots, m + 1$ and u_t is the error term at time t .

3.5.1. Multiple Structural Breaks Tests

The number of significant breaks can be found via a sequential algorithm for multiple breaks model as [Bai and Perron \(1998, 2003\)](#) suggest. In a case of m breaks, while the first break point is identified, the sample is separated into two sub-samples by the first break point. The same procedure is employed for each sub-sample until the m breaks are arrived and the null hypothesis is not rejected for this m at the specified significance level (Table 6).

Table 6. Tests for Breaks using the method of “ $m + 1$ ” vs. “ m ” Breaks.

Test for One Break			
Break Test	F-Statistic	Scaled F-Statistic	Critical Value
0 vs. 1 *	56.92	341.57	20.08
Estimated Break date: 2007			
Test for Two Breaks			
Break Test	F-Statistic	Scaled F-Statistic	Critical Value
0 vs. 1 *	56.92	341.57	20.08
1 vs. 2 *	8.93	53.63	22.11
Estimated Break date: 1990, 2007			
Test for Three Breaks			
Break Test	F-Statistic	Scaled F-Statistic	Critical Value
0 vs. 1 *	56.92	341.57	20.08
1 vs. 2 *	8.93	53.63	22.11
2 vs. 3 *	19.54	117.24	23.04
Estimated Break date: 1983, 1990, 2007			
Test for Four Breaks			
Break Test	F-Statistic	Scaled F-Statistic	Critical Value
0 vs. 1 *	56.92	341.57	20.08
1 vs. 2 *	8.93	53.63	22.11
2 vs. 3 *	19.54	117.24	23.04
3 vs. 4 *	12.62	76.09	23.77
Estimated Break date: 1983, 1990, 2000, 2007			
Test for Five Breaks			
Break Test	F-Statistic	Scaled F-Statistic	Critical Value
0 vs. 1 *	56.92	341.57	20.08
1 vs. 2 *	8.93	53.63	22.11
2 vs. 3 *	19.54	117.24	23.04
3 vs. 4 *	12.62	76.09	23.77
4 vs. 5	0.00	0.00	24.43

Note: We use trimming 0.15. Test statistics employ HAC correction (Quadratic-Spectral kernel and Andrews bandwidth). * denotes significance at the 0.05 level. Bai-Perron (Econometric Journal, [Bai and Perron 2003](#)) critical values.

First the linear specification is tested against a one break model. The results from test showed that the null hypothesis of the linear model can be rejected against the alternative of one break model and the break date is 2007. Next, the null of one break model is tested against the alternative of two breaks

model. Again the null of one break model against the alternative of two breaks model is rejected and the break dates are 1990, 2007. Next, the null of two breaks model is tested against the alternative of three breaks model. The null of the two breaks model against the alternative of three breaks model is rejected and the break dates are 1983, 1990, 2007. Next, the null of three breaks model is tested against the alternative of four breaks model. Again the null of the three breaks model against the alternative of a four breaks model is rejected and the break dates are 1983, 1990, 2000 and 2007. Finally, the four breaks model is tested against the alternative of a five breaks model and in this case the null hypothesis is not rejected.

3.5.2. Multiple Structural Breaks Estimation Results

Table 7 presents the results from the multiple structural break estimations over the period 1970–2016 for the Greek economy.

Table 7. Estimation results of structural breaks analysis.

	Variable's Coefficient					
	GFCF	GC	IC	TRADE	DEBT	POP
4 – break model						
1970–1982	1.12 *** (8.98)	1.17 (1.66)	0.63 ** (2.56)	0.64 (1.38)	0.13 (0.56)	1.96 (0.89)
1983–1989	0.83 * (2.02)	1.10 *** (4.84)	1.21 *** (5.59)	−0.18 (−0.46)	−0.11 (−1.13)	−2.89 *** (−4.84)
1990–1999	0.26 (1.65)	0.03 (0.16)	1.50 *** (20.96)	0.10 (0.55)	−0.01 (−0.31)	7.15 *** (4.6)
2000–2006	0.49 *** (3.79)	−1.84 (−1.21)	2.22 *** (3.68)	0.66 * (1.80)	−0.84 ** (−2.05)	2.84 * (1.76)
2007–2016	0.67 *** (4.49)	1.55 *** (6.21)	0.60 *** (7.30)	0.50 *** (5.09)	0.01 (0.03)	0.01 (0.00)

Note: The dependent variable is real GDP. *t*-statistics are presented in the parentheses. ***, **, * denote statistical significance at the 1%, 5%, 10% level, respectively. The model was estimated consistently as for the existence of the serial correlation and the heteroskedasticity by using the Newey-West HAC estimator (Newey and West 1987). GFCF is the gross fixed capital formation, GC is the final consumption expenditure of general government, IC is the private final consumption expenditure, trade is the trade openness-to-GDP ratio, debt is the debt-to-GDP ratio and pop is the population growth. The data observed from AMECO database for the time period 1970–2016.

The break model for the period 1970–1982 shows that the growth of the Greek economy was mainly based on investment and private consumption. For the period 1983–1989 investment, private and government consumption have significant positive effects on economic growth, while the debt-to-GDP and trade has insignificant effects on economic growth. For the period 1990–1999 only private consumption and population growth have significant positive effects on economic growth, while the other variables have insignificant effects. For the period 2000–2006 a 10 percentage point rise in the debt-to-GDP goes in tandem with 8.4 percentage point decline in economic growth. Also, investment, private consumption, trade and population growth have significant positive effects on economic growth, while government consumption has insignificant negative effects. Finally, for the period 2007–2016 debt-to-GDP and population growth have insignificant effects on economic growth. On the other hand, investment, private and government consumption and trade have significant positive effects on economic growth. Our empirical findings are consistent with the results of the literature review (Reinhart and Rogoff 2010; Reinhart et al. 2012; Checherita-Westphal and Rother 2012; Furceri and Zdzienicka 2012).

4. Discussion of Research Findings

The empirical analysis reveals that the variables of GDP, investment, private and government consumption, trade openness, population growth and debt-to-GDP are co-integrated. This implies that long-run movements of the variables are determined by an equilibrium relationship. The role of the examined variables on economic growth seems to be significant. The results indicate that all variables have a positive contribution to economic growth, with the exception of debt-to-GDP and imports. Investment continues to significantly contribute to the increase of output growth. One of the most noticeable results is the high contribution of public and private consumption on economic growth. One explanation could be that the government and private expenditures have rapidly increased during the last four decades in Greece. Regarding the impact of debt-to-GDP on economic growth, we observe negative results for Greece. The negative effect of debt-to-GDP on growth means that domestic borrowing from foreign capital was used, partially, to finance government expenditure and public investment, thus contributing to the increase in public spending, increases budget deficit and leading to higher public debt in order to finance these deficits. Over recent decades the increase in consumption could not be financed out of current production. External borrowing in Greece was directed not for used in the industry, or for the other prospects for economic growth, but they were actually used for consumption. Therefore, the expansion in domestic demand (public and private) financed by the capital inflows was the main reason behind the loss of competitiveness in Greece.

Also, the results reveal that in Greece, the timing of the estimated break was at the year 2000. In this year the turning point of debt-to-GDP beyond which economic growth slows down sharply is 105% of GDP. Above the threshold of 105% of GDP levels of debt-to-GDP has had significant negative effect on growth and these results could explain why government debt was a significant drag on economic growth of Greece. The period 2000–2006 is associated with the period after the Euro currency was launched and before the beginning of the global financial crisis.

5. Conclusions

The impact of government debt on economic growth remains a controversial issue in both the academic and policy-making fields. This study empirically investigates the impact of debt-to-GDP and other economic determinants (investment, private and public consumption, trade openness and population growth) on economic growth of Greece, including the period of financial crisis. The results indicate that all variables in the long run have a positive contribution to economic growth, with the exception of debt-to-GDP and population growth. Also, by using structural breaks models, we found evidence in favor of a negative relationship between debt-to-GDP and growth. The main conclusion from the results is that the crisis in Greece had started much earlier than the global one.

The challenge for policy makers is to halt the rising in government debt by keeping a sustainable growth path. The recent global economic crisis showed that high government debt created huge fiscal imbalances in the Greek economy. Indeed, when government debt is high, this is perceived by investors as being extremely risky, creating difficulties on lending from the markets, leading to austerity fiscal policies, which deepens recession. For Greece, the financial market behavior over time has clearly shifted towards pessimism, insinuating that the risk attitude of major market participants has been altered. Regarding the impact of fiscal rules and institutions on market behavior, empirical findings show that they improve market's expectations over fiscal sustainability (Apergis and Mamatzakis 2014; Mamatzakis and Tsionas 2015). As a result, enhancing fiscal governance could reduce the degree of the market's pessimism regarding the Greek sovereign debt crisis. That is necessary because Greece needs to restore the liquidity of its banking system, by recovering the access to the international financial markets. The liquidity arrangement will help to boost liquidity in the domestic market and further to economic growth and the next step should be the end of the restrictions of capital controls. Therefore, Greece should reduce its deficits, increase its primary budget surplus and enhance the effectiveness of planning and operating policy to identify an optimal debt for support the growth of the country. To conclude, fiscal consolidation, adjustment and discipline, although

necessary, are not, by themselves, a sufficient condition for economic growth and social welfare. To overcome the financial crisis, it is essential fiscal discipline to combine that with the implementation of coherent, consistent and sequential growth-enhancing structural reforms. For policymakers it is particularly important to select the appropriate macroeconomic tools to improve the situation of the Greek economy. Further improvements in competitiveness are important, which need to lower costs and shift resources to tradable sectors to spur growth and rebalance their external position (Spilimbergo Antonio and Ostry 2009). Thus, Greece should base its growth strategies on increasing exports, improving competitiveness and productivity, enhancing research and innovation, attracting foreign direct investment and correcting the use of public investment. Furthermore, simulations from a calibrated model of the Greek economy confirm that reforms to the labor markets can play a significant role in stemming output losses and supporting the recovery (International Monetary Fund 2013a, 2013b). Given that the debt accumulated during recent years is very large, the adjustment is likely to take a long time.

Further research is certainly needed to fully understand the impact of government debt on economic growth. One could probably investigate how the Greek debt crisis has affected the foreign exchange rate and interest rates. This could be a further analysis for the investigation of the relationship between GDP growth and debt-to-GDP. Many determinants of economic growth, as investments are dependent on interest rates and exports/imports are dependent on foreign exchange rate.

Conflicts of Interest: The author declares no conflict of interest.

References

- Afonso, Antonio, and José Ricardo Alves. 2015. The Role of Government Debt in Economic Growth. *Hacienda Pública Española IEF* 215: 9–26. [CrossRef]
- Afonso, António, and João Tovar Jalles. 2013. Growth and productivity: The role of government debt. *International Review of Economics & Finance* 25: 384–407.
- Akaike, Hirotugu. 1974. A new look at the statistical model identification. *IEEE Transactions on Automatic Control* 19: 716–23. [CrossRef]
- AMECO Database. 2017. Available online: <http://ec.europa.eu/economyfinance/ameco/user/serie/SelectSerie.cfm> (accessed on 30 November 2017).
- Anyanwu, John, and Andrew Erhijakpor. 2004. Domestic Debt and Economic Growth: The Nigerian Case. *West African Financial and Economic Review* 1: 98–128.
- Apergis, Nicholas, and Emmanuel Mamatzakis. 2014. What are the driving factors behind the rise of spreads and CDS of euro-area sovereign bonds? A FAVAR model for Greece and Ireland. *International Journal of Economics and Business Research* 7: 104–20. [CrossRef]
- Bai, Jushan, and Pierre Perron. 1998. Estimating and Testing Linear Models with Multiple Structural Changes. *Econometrica* 66: 47–78. [CrossRef]
- Bai, Jushan, and Pierre Perron. 2003. Computation and analysis of multiple structural change models. *Journal of Applied Econometrics* 18: 1–22. [CrossRef]
- Bökemeier, Bettina, and Alfred Greiner. 2015. On the relation between public debt and economic growth: An empirical investigation. *Economics and Business Letters* 4: 137–50.
- Brown, Robert L., James Durbin, and James M. Evans. 1975. Techniques for Testing the Constancy of Regression Relationships over Time. *Journal of the Royal Statistical Society, Series B* 37: 149–92.
- Checherita-Westphal, Cristina, and Philipp Rother. 2012. The impact of high government debt on economic growth and its channels: An empirical investigation for the euro area. *European Economic Review* 56: 1392–405. [CrossRef]
- Cuestas, Juan Carlos, Luis A. Gil-Alana, and Karsten Staehr. 2014. Government debt dynamics and the global financial crisis: Has anything changed in the EA12? *Economics Letters* 124: 64–66. [CrossRef]
- Dickey, David A., and Wayne A. Fuller. 1979. Distributions of the estimators for autoregressive time series with a unit root. *Journal of American Statistical Association* 74: 427–31.
- Dickey, David A., and Wayne A. Fuller. 1981. Likelihood ratio statistics for autoregressive time series with a unit root. *Econometrica* 49: 1057–72. [CrossRef]

- Drine, Imed, and M. Sami Nabi. 2010. Public external debt, informality and production efficiency in developing countries. *Economic Modelling* 27: 487–95. [CrossRef]
- Eberhardt, Markus, and Andrea F. Presbitero. 2015. Public debt and growth: Heterogeneity and non-linearity. *Journal of International Economics* 97: 45–58. [CrossRef]
- Egert, Balázs. 2015. Public debt, economic growth and nonlinear effects: Myth or reality? *Journal of Macroeconomics* 43: 226–38. [CrossRef]
- El-Mahdy, Adel M., and Neveen M. Torayeh. 2009. Debt Sustainability and Economic Growth in Egypt. *International Journal of Applied Econometrics and Quantitative Studies* 6: 21–55.
- Furceri, Davide, and Aleksandra Zdzienicka. 2012. How costly are debt crises? *Journal of International Money and Finance* 31: 726–42. [CrossRef]
- Gómez-Puig, Marta, and Simón Sosvilla-Rivero. 2015. The causal relationship between debt and growth in EMU countries. *Journal of Policy Modeling* 37: 974–89. [CrossRef]
- International Monetary Fund. 2013a. *Euro Area Policies*. Country Report No. 13/231. Washington: International Monetary Fund.
- International Monetary Fund. 2013b. *Selected Issues Paper for Greece*. Country Report No. 13/155. Washington: International Monetary Fund.
- International Monetary Fund. 2016. Fiscal Monitor. Available online: www.imf.org/external/pubs/ft/fm/2016/02/pdf/fm1602.pdf (accessed on 15 January 2018).
- Jiménez-Rodríguez, Rebeca, and Araceli Rodríguez-López. 2015. What Happens to the Relationship between Public Debt and Economic Growth in European Countries? *Economics and Business Letters* 4: 151–60. [CrossRef]
- Kumar, Manmohan, and Jaejoon Woo. 2010. *Public Debt and Growth*. International Monetary Fund Working Paper No. 10/174. Washington: International Monetary Fund.
- Lütkepohl, Helmut. 2006. Structural vector autoregressive analysis for cointegrated variables. *Advances in Statistical Analysis, German Statistical Society* 90: 75–88.
- MacKinnon, James G. 1996. Numerical distribution functions for unit root and cointegration tests. *Journal of Applied Econometrics* 11: 601–18. [CrossRef]
- Mamatzakis, Emmanuel, and Mike Tsionas. 2015. How are market preferences shaped? The case of sovereign debt of stressed euro-area countries. *Journal of Banking & Finance* 61: 106–16.
- Misztal, Piotr. 2010. Public Debt and Economic Growth in the European Union. *Journal of Applied Economic Sciences* 5: 292–302.
- Narayan, Paresch Kumar. 2005. The saving and investment nexus for China: Evidence from cointegration tests. *Applied Economics* 37: 1979–90. [CrossRef]
- Newey, Whitney K., and Kenneth D. West. 1987. A Simple Positive Semi-Definite, Heteroskedasticity and Autocorrelation Consistent Covariance Matrix. *Econometrica* 55: 703–8. [CrossRef]
- Ogunmuyiwa, Michael Segun. 2011. Does External Debt Promote Economic Growth? *Journal of Economic Theory* 3: 29–35.
- Pattillo, Catherine A., Helene Poirson, and Luca A. Ricci. 2004. *What Are the Channels through Which External Debt Affects Growth?* International Monetary Fund Working Paper No. 04/15; Washington: International Monetary Fund.
- Perron, Pierre. 1989. The great crash, the oil price shock, and the unit root hypothesis. *Econometrica* 57: 1361–401. [CrossRef]
- Perron, Pierre. 1997. Further evidence on breaking trend functions in macroeconomic variables. *Journal of Econometrics* 80: 355–85. [CrossRef]
- Pesaran, M. Hashem, Yongcheol Shin, and Richard J. Smith. 2001. Bounds Testing Approaches to the Analysis of Level Relationships. *Journal of Applied Econometrics* 16: 289–326. [CrossRef]
- Pescatori, Andrea, Damiano Sandri, and John Simon. 2014. *Debt and Growth: Is There a Magic Threshold?* International Monetary Fund Working Paper No. 14/34. Washington: International Monetary Fund.
- Reinhart, Carmen, and Kenneth Rogoff. 2010. Growth in a Time of Debt, American Economic Review. *American Economic Association* 100: 573–78.
- Reinhart, Carmen M., Vincent R. Reinhart, and Kenneth S. Rogoff. 2012. Public Debt Overhangs: Advanced-Economy Episodes since 1800. *Journal of Economic Perspectives* 26: 69–86. [CrossRef]
- Schclarek, Alfredo. 2004. *Debt and Economic Growth in Developing and Industrial Countries*. Working Papers 2005: 34. Lund: Lund University, Department of Economics.

- Schneider, Friedrich. 2011. The Shadow Economy Labour Force. *World Economics* 12: 53–92.
- Sen, Swapan, Krishna M. Kasibhatla, and David B. Stewart. 2007. Debt Overhang and Economic Growth the Asian and the Latin American Experiences. *Economic Systems* 31: 3–11. [[CrossRef](#)]
- Shah, Mahmud Hasan, and Pervin Shahida. 2012. External Public Debt and Economic Growth: Empirical Evidence from Bangladesh. *Academic Research International* 3: 508–15.
- Spilimbergo Antonio, Alessandro Prati, and Jonathan David Ostry. 2009. *Structural Reforms and Economic Performance in Advanced and Developing Countries*. International Monetary Fund Occasional Paper No. 268. Washington: International Monetary Fund.
- Swamy, Vighneswara. 2015a. *Government Debt and Economic Growth—Decomposing the Cause and Effect Relationship*. MPRA Paper 64105. Amsterdam: Elsevier.
- Swamy, Vighneswara. 2015b. *Government Debt and its Macroeconomic Determinants—An Empirical Investigation*. MPRA Paper 64106. Amsterdam: Elsevier.
- Tchereni, Betchani, Tshediso Joseph Sekhampu, and Roosevelt Ndovi. 2013. The Impact of Foreign Debt on Economic Growth in Malawi. *African Development Review* 25: 85–90. [[CrossRef](#)]



© 2018 by the author. Licensee MDPI, Basel, Switzerland. This article is an open access article distributed under the terms and conditions of the Creative Commons Attribution (CC BY) license (<http://creativecommons.org/licenses/by/4.0/>).