

Di Serio, Mario; Fragetta, Matteo; Gasteiger, Emanuel

Working Paper

The government spending multiplier at the zero lower bound: Evidence from the United States

ECON WPS, No. 04/2020

Provided in Cooperation with:

TU Wien, Institute of Statistics and Mathematical Methods in Economics, Economics Research Unit (ECON)

Suggested Citation: Di Serio, Mario; Fragetta, Matteo; Gasteiger, Emanuel (2020) : The government spending multiplier at the zero lower bound: Evidence from the United States, ECON WPS, No. 04/2020, Vienna University of Technology, Institute of Statistics and Mathematical Methods in Economics, Research Group Economics, Vienna

This Version is available at:

<https://hdl.handle.net/10419/216825>

Standard-Nutzungsbedingungen:

Die Dokumente auf EconStor dürfen zu eigenen wissenschaftlichen Zwecken und zum Privatgebrauch gespeichert und kopiert werden.

Sie dürfen die Dokumente nicht für öffentliche oder kommerzielle Zwecke vervielfältigen, öffentlich ausstellen, öffentlich zugänglich machen, vertreiben oder anderweitig nutzen.

Sofern die Verfasser die Dokumente unter Open-Content-Lizenzen (insbesondere CC-Lizenzen) zur Verfügung gestellt haben sollten, gelten abweichend von diesen Nutzungsbedingungen die in der dort genannten Lizenz gewährten Nutzungsrechte.

Terms of use:

Documents in EconStor may be saved and copied for your personal and scholarly purposes.

You are not to copy documents for public or commercial purposes, to exhibit the documents publicly, to make them publicly available on the internet, or to distribute or otherwise use the documents in public.

If the documents have been made available under an Open Content Licence (especially Creative Commons Licences), you may exercise further usage rights as specified in the indicated licence.

The Government Spending Multiplier at the Zero Lower Bound: Evidence from the United States



by
Mario Di Serio
Matteo Fragetta
Emanuel Gasteiger

March 29, 2020

The Government Spending Multiplier at the Zero Lower Bound: Evidence from the United States*

Mario Di Serio^{a,*}, Matteo Fragetta^{a,b,c}, Emanuel Gasteiger^{b,1}

^a *Università degli Studi di Salerno, Department of Economics and Statistics, Via Ponte Don Melillo, 84084 Fisciano (SA), Italy*

^b *Instituto Universitário de Lisboa (ISCTE-IUL), Business Research Unit (BRU-IUL), Av.^a das Forças Armadas, 1649-026 Lisboa, Portugal*

^c *Università degli Studi di Salerno, CELPE, Centro di Economia del Lavoro e di Politica Economica*

^d *TU Wien, Institute of Statistics and Mathematical Methods in Economics, Wiedner Hauptstr. 8-10, 1040 Wien, Austria*

Abstract

We estimate state-dependent government spending multipliers for the United States. We use a Factor-Augmented Interacted Vector Autoregression (FAIVAR) model. This allows us to capture the time-varying monetary policy characteristics including the recent zero interest rate lower bound (ZLB) state, to account for the state of the business cycle, and to address the limited information problem typically inherent in VARs. We identify government spending shocks by sign restrictions and use a government spending growth forecast series to account for the effects of anticipated fiscal policy. In our baseline specification, we find that government spending multipliers in a recession range from 3.56 to 3.79 at the ZLB. Away from the ZLB, multipliers in recessions range from 2.31 to 3.05. Several robustness analyses confirm that multipliers are higher, when the interest rate is lower and that multipliers in recessions exceed multipliers in expansions. Our results are consistent with theories that predict larger multipliers at the ZLB.

JEL Classification: C32, E21, E32, E52, E62, H50.

Keywords: Interacted VAR, Fiscal Policy, Government Spending, Zero Interest Rate Lower Bound.

*We are grateful to Efram Castelnovo, Lutz Kilian, Matthias Klein, our discussant Massimiliano Pisani and the participants of the 5th SIdE Workshop for PhD students in Econometrics and Empirical Economics organized by the Italian Econometric Association and Bank of Italy, the Verein für Socialpolitik Annual Conference 2017 for many helpful comments. Financial support from Fundação para a Ciência e a Tecnologia (UID/GES/00315/2013) and the Berlin Economics Research Associates (BERA) program is gratefully acknowledged. All remaining errors are the responsibility of the author.

¹Corresponding author: mdiserio@unisa.it

1. INTRODUCTION

How large is the government spending multiplier in normal times and how large is it when monetary policy is constrained by the zero interest rate lower bound (ZLB)? The Great Recession has revived the debate regarding this question among policy circles and in academia as it is of high practical relevance. If fiscal stimulus by means of an increase in government spending raises real GDP by more than one-for-one, i.e., each dollar of the government spending increase raises real GDP by more than one dollar, then such a stimulus is highly desirable from a policymaking perspective.

The recent debate has given particular attention to the fact that since the outbreak of the 2008 financial crisis the Fed's monetary policy was accommodative, or, even constrained by the ZLB. It is worthwhile that the accommodative stance also included unconventional monetary policy.¹ Figure 1 illustrates monetary and fiscal policy from 1960Q1 to 2015Q4. The key observation regarding the most recent recession is that the Federal Funds Rate was abruptly cut to near zero and has remained there until 2015Q4. Moreover, there has been a dramatic increase in government expenditures at the beginning of this period. This policy can be rationalized by arguing that in such an extraordinary situation as the ZLB, an increase in government spending is more effective than in normal times.²

A growing theoretical literature examines this claim. There is an increasing number of New Keynesian DSGE models that generates predictions consistent with this claim. See, for instance, [Christiano et al. \(2011\)](#), [Eggertsson \(2010\)](#), [Woodford \(2011\)](#), [Davig and Leeper \(2011\)](#), or, [Coenen et al. \(2012\)](#). These models predict a government spending multiplier at the ZLB much larger than one. Likewise, there is an emerging literature developing reasonable theories that suggest that the government spending multiplier at

¹For instance, the Fed announced three rounds of quantitative easing: in November 2008, in November 2010, and in September 2012.

²Consistent with the idea that fiscal multipliers are different at the ZLB, several studies find changes in macroeconomic performance at the ZLB (see, e.g., [Liu et al., 2019](#)).

the ZLB is one or below, and lower than in times without the ZLB binding. See, for instance, [Boneva et al. \(2016\)](#), [Mertens and Ravn \(2014\)](#), [Aruoba et al. \(2018\)](#).

Given the wide range of theoretical predictions for the size of the government spending multiplier at the ZLB, empirical evidence is a crucial need for policymakers and academia.³ However, the empirical literature providing state-dependent evidence on the size of the aggregate government spending multiplier at the ZLB is still in its infancy. To date, [Ramey and Zubairy \(2018\)](#) is the single paper for the US in this literature according to our knowledge.⁴ [Ramey and Zubairy \(2018\)](#) use the local projection method developed by [Jordà \(2005\)](#) and find that the government spending multiplier at the ZLB can be as large as 1.5 in some specifications.⁵ Moreover, there is a related, but distinct empirical literature quantifying state-dependent fiscal multipliers in recessions based on regime-switching VAR models (see, e.g., [Auerbach and Gorodnichenko, 2012, 2013](#)). However, as [Figure 1](#) illustrates, recessions and episodes where the federal funds rate is at zero or below do not necessarily coincide. Thus, there is a need for more evidence on the government spending multiplier at the ZLB.

The objective of this paper is to provide further state-dependent evidence on the size of the government spending multiplier at the ZLB from the United States. We extend the literature by proposing an alternative framework to quantify the state-dependent government spending multiplier. To this end we use Factor-Augmented Interacted Vector Autoregressive model with exogenous variables (FAIVAR-X) building on the Interacted Vector Autoregression (IVAR) model in [Towbin and Weber \(2013\)](#) and [Sá et al. \(2014\)](#).

³[Christiano et al. \(2011, p.81\)](#) argue: *‘The simple models discussed above suggest that the multiplier can be large in the zero-bound state. The obvious next step would be to use reduced-form methods, such as identified VARs, to estimate the government-spending multiplier when the zero bound binds.’*

⁴[Crafts and Mills \(2013\)](#) and [Ramey \(2011b\)](#) provide evidence for ZLB episodes suggesting multipliers below unity.

⁵[Miyamoto et al. \(2018\)](#) build on the methods used in [Ramey and Zubairy \(2018\)](#) and provide evidence for Japan. They find that the impact multiplier is around 1.5 at the ZLB and much larger than away from the ZLB. More recently, [Amendola et al. \(2019\)](#) build on the ideas and methods in our paper and estimate a panel version of our model for the Euro Area. Their findings are consistent with our findings.

We augment the IVAR model with factors from a large informational dataset similar to [Bernanke et al. \(2005\)](#) and [Fragetta and Gasteiger \(2014\)](#). Incorporating exogenous variables facilitates the identification of the government spending shock.

The key advantage of building on the IVAR methodology is the interaction term, which allows us to derive impulse response functions (IRFs) to a government spending shock at different percentiles of the interest rate distribution. This methodology enables us to investigate among the entire range of historical interest rates for the sample considered: within the same setup, we are capable of computing multipliers for median and low levels of the interest rate distribution, with no need to restrict the sample. Likewise, the IVAR allows us to estimate multipliers depending on the state of the business cycle. Thus, we can compute the multiplier for the case where low interest rate state coincides with a recession. This is especially important in light of the bulk of the policy debate, which focuses on fiscal stimulus at the ZLB in recessions.

In addition, using the IVAR methodology has further benefits. For instance, one benefit compared to regime-switching approaches is that the IVAR does not require to define a particular threshold. Regime-switching approaches use such a threshold to distinguish observations of normal times from ZLB episodes. However, such a threshold may be subject to discretion as the threshold is frequently chosen by the researcher (see, e.g., [Ramey and Zubairy, 2018](#)). In contrast, the IVAR, in principle, allows to distinguish between as many states of economy as there are observations for the variable that is used in the interaction term, e.g., the interest rate. A second related benefit is that the IVAR uses all the information available for the full sample, while a threshold model uses the information of each state under consideration separately. A third benefit of IVARs is that the interaction term can capture abrupt policy changes next to smooth policy changes. This is particularly important as [Caggiano et al. \(2017, p.11\)](#) emphasize that the change in monetary policy in times of crises is frequently abrupt and not smooth.

The second key advantage of our FAIVAR framework is that it addresses the generic limited information problem inherent in VARs. On the one side, introducing more and more variables to a VAR adds more information. However, adding additional variables to a VAR implies a loss of degrees of freedom. We handle this trade-off by augmenting the IVAR with factors, via principal components, estimated from a large informational dataset.

The third key strength of our empirical strategy is that we identify the government spending shock by using sign restrictions and the series of government spending growth forecasts used in [Auerbach and Gorodnichenko \(2012, 2013\)](#). The sign restriction approach allows us to use a minimum of economically meaningful and rather uncontroversial identification restrictions.⁶ Moreover, treating growth in the forecast of government spending as an exogenous variable in our FAIVAR-X framework is our way of addressing the concerns related to fiscal foresight in [Leeper et al. \(2013\)](#). Our approach ensures that the shocks to government spending identified by sign restrictions are orthogonal to the information set of economic decision makers. All information regarding government spending that could have been anticipated is captured by the growth in the forecast of government spending.

For our sample from 1966Q4 to 2015Q4, the baseline FAIVAR-X specification involves government spending, GDP, the average tax rate and the 10Y treasury bond yield as endogenous variables. During recessions, the 5-year cumulative government spending multipliers at the ZLB range between 3.56 to 3.79. When monetary policy is not constrained by the ZLB, government spending multipliers during recessions are between 2.31 to 3.05.

In order to assess the robustness of these estimates, we carry out three types of analysis. First, we isolate the role played by the interaction terms, the factors, and the exogenous variables in our FAIVAR-X in generating our main findings. To this end, we estimate an IVAR, FAIVAR, and a IVAR-X model. Second, we consider a FAIVAR specification,

⁶The sign restrictions approach is developed in [Canova and De Nicolò \(2002\)](#), [Uhlig \(2005\)](#). [Mountford and Uhlig \(2009\)](#) apply it to fiscal policy.

where we incorporate the forecasts errors based on growth in the forecast of government spending in the vector of endogenous variables. This is an alternative way of addressing fiscal foresight. The forecast error series captures the surprise component in a broad measure of government spending and, as we show, is a relevant and strong instrument for the our post WWII sample. An alternative would be to consider the defense news series used in [Ramey and Zubairy \(2018\)](#). However, this is a rather narrow measure that captures just a particular component of government spending. Furthermore, as [Ramey \(2011b\)](#) reports, defense news appears to be a rather weak instrument, when a post WWII sample does not cover the period of the Korean War. Third, we identify the government spending shock via timing instead of sign restrictions to shed light on the importance of sign restrictions for our main findings.

While the range of multipliers is considerably increased over the various specifications in the robustness exercises, the bottom line result is the same: multipliers are higher when interest rates are lower. Moreover, multipliers in recessions are larger than in expansions. Thus, our results are qualitatively and quantitatively consistent with the claim that increases in government spending are even more effective at the ZLB and during recessions.

The paper proceeds as follows: Section [2](#) outlines the FAIVAR-X model, our baseline specification and data, our inference and identification approach and how we calculate the multipliers; Section [3](#) discusses the main results; Section [4](#) addresses robustness concerns; Section [5](#) concludes.

2. METHODOLOGY

2.1. Empirical Model

We use a Factor-Augmented Interacted Vector Autoregressive model with exogenous variables (FAIVAR-X) based on [Towbin and Weber \(2013\)](#) and [Sá et al. \(2014\)](#). The

recursive-form is given by

$$B_t Y_t = \kappa + \sum_{k=1}^L \Gamma_k Y_{t-k} + v Z_{t|t-1} + \sum_{m=1}^N \kappa_m^1 X_{t,m} + \sum_{k=1}^L \sum_{m=1}^N \Gamma_{k,m}^1 X_{t,m} Y_{t-k} + \varepsilon_t, \quad (1)$$

where $t = 1, \dots, T$ denotes time, $k = 1, \dots, L$ denotes the lag length and $m = 1, \dots, N$ denotes the number of interaction terms. Y_t is a $q \times 1$ vector which contains explanatory variables. κ is the intercept, Γ_k is a $q \times q$ matrix of autoregressive coefficients, and $\varepsilon_t \sim N(0, \Sigma)$ is the vector of residuals. $Z_{t|t-1}$ is an exogenous variable accounting for fiscal foresight. Moreover, X_t is a $m \times q$ matrix which denotes the interaction terms, the latter can influence both the dynamic relationship between endogenous variables and their level, through $\Gamma_{k,m}^1$ and κ_m^1 respectively.

The matrix B_t is a $q \times q$ lower triangular matrix with ones on the main diagonal. Each component $B_t(w, q)$ represents the contemporaneous effect of the q th-ordered variable on the w th-ordered variable. It is constructed as follows:

$$B_t = \begin{cases} B_t(w, q) = 0 & \text{for } q > w \\ B_t(w, q) = 1 & \text{for } q = w \\ B_t(w, q) = B(w, q) + \sum_{m=1}^N B_m^1(w, q) X_{t,m} & \text{for } q < w, \end{cases}$$

where $B_m^1(w, q)$ are regression coefficients capturing the relation with the contemporaneous marginal effects of a change in the interaction terms. The recursive form of the matrix B_t implies that the covariance matrix of the residuals, Σ , is diagonal (for more details on the interacted VAR framework see for example [Sá et al., 2014](#)).

2.2. Baseline Specification

Our data set consists of U.S. quarterly data and goes from 1966Q4 to 2015Q4.⁷ In our baseline specification (1) the vector of endogenous variables $Y_t = [G_t, GDP_t, T_t, i_t^{10y}, F_t]'$ includes mostly variables that are commonly used in the literature (e.g., [Blanchard and Perotti, 2002](#)). G_t represents real government spending and we use government consumption expenditures and gross investment as a proxy. GDP_t stands for real gross domestic product. Moreover, T_t denotes the net (of transfers) average tax rate computed as nominal current tax receipts divided by nominal GDP. Variables G_t and GDP_t are considered in levels and have been normalized with an estimate of real potential GDP.⁸

We also include the 10Y treasury bond yield, denoted by i_t^{10y} . We use this variable to account for potential effects of the shock to government spending on the central bank interest rate. Ideally we would use the (shadow) federal funds rate for this purpose. However, as we discuss below, we will use the latter as an interaction term, which prevents us from using it as an endogenous variable at the same time. Nevertheless, according to the *expectations hypothesis of the term structure* the long-term bond yield should be a valid measure of controlling for monetary policy responses. Movements in expected short-term interest rates should transmit into movements in long-term interest rates. For instance, [Gürkaynak et al. \(2005\)](#), [Roush \(2007\)](#) or [Favero and Giavazzi \(2008\)](#) provide empirical evidence that supports this claim. [Roush \(2007\)](#) also finds that the term premium does not play a significant role in the US.

Next, we augment Y_t with the 4×1 vector F_t , which captures the first four principal components of an informational dataset.⁹ Our motivation is twofold. First, the choice of

⁷The choice of this time period is motivated by the availability of the Greenbook and Survey of Professional Forecasters (SPF) real government spending forecasts, which we use in our identification strategy detailed further below and the end of quantitative easing in the U.S.

⁸Appendix A and Table 2 contain detailed information on the data. We normalize G_t and GDP_t to avoid biases in the government spending multiplier calculation as discussed in detail below. Normalizing the net average tax rate by potential GDP does not affect results.

⁹We apply the principal components method by using the same informational dataset as used in [Fragetta](#)

variables in Y_t is subject to discretion. Thus, one may argue that any results obtained are due to a particular choice of variables in Y_t . Second, given the considerations and results in [Fragetta and Gasteiger \(2014\)](#), an Interacted VAR (IVAR) model is potentially affected by a generic limited information problem. Applied econometricians have to preserve degrees of freedom and have to specify parsimonious models. Thus, they can only specify a limited number of variables. However, when economic agents make their decisions, they may use all available information at the time. This misalignment in information sets may render the government spending shock that we identify below as non-fundamental and also bias our estimates (see, [Lippi and Reichlin, 1994](#)). This can be seen as a *generic* limited information problem of VARs. By augmenting Y_t with F_t , both of these concerns can be addressed. On the one hand it allows us to take into account the information from a large informational data set and to maintain a small set of variables in Y_t that is necessary for meaningful identification. Thus, discretion in the specification of Y_t is limited to a minimum. On the other hand, the factor-augmented model allows us to overcome the generic limited information problem.¹⁰

Moreover, $Z_{t|t-1}$ in equation (1) is the growth in the forecast of real government spending used in [Auerbach and Gorodnichenko \(2012\)](#) and based on the Greenbook and SPF forecasts.¹¹ In this way we address fiscal foresight, which is a *specific* limited information problem that causes a misalignment of information sets. As a matter of fact, agents can forecast the future fiscal stance and change their behavior even before its implementation. Thus, by adding $Z_{t|t-1}$ to our model, we account for this limited information problem (for

and Gasteiger (2014). Their informational dataset comprises 61 publicly available time series from the Federal Reserve Bank of St. Louis' FRED[®] Economic Database. As in their case we transform variables to guarantee stationarity according to [Dickey and Fuller \(1979\)](#) and [Kwiatkowski et al. \(1992\)](#) tests. To select the number of static factors to extract, we use the [Bai and Ng \(2007\)](#) IC_{p2} criterion.

¹⁰We follow [Bernanke et al. \(2005\)](#), by implementing a two-step estimation procedure. First, we use the method of principal components to extract and summarize information from a large dataset. Second, we add to our model the vector F_t .

¹¹We have detailed the construction of the forecast of government spending series in Appendix A.

a detailed discussion of fiscal foresight see [Leeper et al., 2013](#)).

Finally, we use the U.S. Shadow Federal Funds Rate developed by [Wu and Xia \(2016\)](#), i.e., $X_t = sr_{t-1}$ as interaction term. This allows us to examine how the time-varying interest rate environment affects the transmission mechanism of the government spending shock among the variables in Y_t . In particular, we investigate effects of a government spending shock when sr_{t-1} is at the *1st*, *5th*, *13th*, *25th*, *50th* and *75th* percentile of its distribution. We consider the range from the *1st* to the *13th* percentile of the Shadow Rate distribution as the *low* interest rate state, as the *13th* percentile coincides with a value of the interest rate equal to 0.25. Values below this value are conventionally accepted by the literature as the lower bound for monetary policy in using the Federal Funds rate as instrument (see, e.g., [Ramey and Zubairy, 2018](#)). Results for the *25th* percentile and above are associated with the *high* interest rate state. It is important to emphasize that we use this categorization of percentiles in order to structure the discussion of results later on. However, this is not a threshold that affects our results.

A potential concern to quantifying the fiscal multiplier with such an interaction term is that the low interest rate state may coincide with recessionary episodes in the data, e.g., the Great Recession and therefore the results may be interpreted as potentially coming from the recession effect instead of being attributed to the low interest rate state. Indeed, the findings by [Auerbach and Gorodnichenko \(2012\)](#) indicate that the fiscal multiplier is higher in recessions. Therefore, in order to separate the effects attributable to the interest rate state on the one hand and the business cycle state on the other, we add a second interaction term indicating the state of the business cycle: the official NBER recession indicator.

Regarding the use of the U.S. Shadow Federal Funds some further remarks are in order. The rate is considered a more precise indicator of monetary policy after the Federal Funds Rate reached the ZLB: away from the ZLB this series is equal to the effective federal funds

rate, but at the ZLB [Wu and Xia \(2016\)](#) use a Gaussian Affine Term Structure Model (GATSM) to generate an effective rate. [Figure 1](#) illustrates this point. After the abrupt cut in the Federal Funds Rate during the most recent recession, the Federal Funds Rate has been near zero and shows little variation. However, unconventional monetary policy measures have been implemented and the variation in the Shadow Federal Funds Rate in the same period captures these policies. Moreover, using the U.S. Shadow Federal Funds Rate has the big advantage that our low interest rate state also includes negative short-term policy rates that were targeted by central banks during the great recession (see, e.g., [Swanson, 2018](#)).

Notice also that we use the first lag of the shadow rate to address potential endogeneity concerns. Specifying sr_{t-1} in X_t implies that the monetary policy instrument is not endogenous to Y_t . If we were to specify sr_t in X_t , reversed causality could be a problem for part of the information set contained in the endogenous variables. Moreover the four factors in F_t contain information on the monetary policy stance, which does not need to be identified in our case, therefore the lagged shadow rate does not create particular concerns. Finally, based on the Hannan-Quinn information criterion, we choose a lag length of order 2.

2.3. Inference and Identification

As in [Uhlig \(2005\)](#) and [Sá et al. \(2014\)](#), to capture parameter uncertainty, we use Bayesian estimation by setting an uninformative normal-Wishart prior. We start with the estimation of the structural recursive model described in equation (1). Since the covariance matrix Σ is diagonal by construction we can proceed by estimating the model equation by equation. We draw the recursive-form parameters from the posterior.¹² We evaluate them

¹²As in [Sá et al. \(2014\)](#) and [Cogley and Sargent \(2005\)](#), we avoid the possibility to have explosive IRFs by discarding the explosive draws from the unrestricted posterior.

at a pre-specified value of the interaction term and compute reduced form parameters by inverting the matrix B_t .

Given the reduced form, we use a sign restriction strategy to identify an unexpected government spending shock. More specifically, we follow the same procedure of [Sá et al. \(2014\)](#), by using the algorithm developed by [Rubio-Ramírez et al. \(2010\)](#). Defining $V_{x,d}$ as the Cholesky decomposition of the reduced form variance-covariance matrix $\Sigma_{x,d}$, we draw an orthonormal matrix Q such that $Q'Q = I$, from which follows $B_d = V_{x,d}Q$ and $\Sigma_{x,d} = B_d'B_d = V_{x,d}'Q'QV_{x,d}$, where d indicates a stable draw from the posterior distributions.¹³ To achieve identification, the impulse responses implied by B_d have to satisfy the following restrictions: a government spending shock should raise GDP_t and G_t for at least four quarters, see [Table 1](#).

For every 100 draws of the Q matrix which meet our sign restrictions we save its median value.¹⁴ We make 20.000 draws from the posterior distribution and use the median over the 10.000 medians obtained as our central estimate of interest.¹⁵ We account for parameter uncertainty by saving the 16th and 84th percentile of the distribution of the median as error or confidence bands.^{16,17}

¹³As in [Primiceri \(2005\)](#); [Sá et al. \(2014\)](#), we discard any explosive draws from the unrestricted posterior.

¹⁴Note that the algorithm excludes the possibility to have a multiple shock problem (see, [Fry and Pagan, 2011](#)). Thus, it discards the draws that give rise to more than one identical shock.

¹⁵Note that we consider the first 10.000 parameter draws as burn-in draws.

¹⁶Parameter uncertainty is due to the limited amount of data. As in [Sá et al. \(2014\)](#), we use confidence bands to address parameter uncertainty, because we are mainly interested on the differences between the low and high interest state. Notice also that in our approach there is another source of uncertainty, which is identification uncertainty. It reflects the lack of information we have about the true properties of the structural shock and is intrinsic in our sign restriction approach. For further details see [Sá et al. \(2014\)](#).

¹⁷The method to derive IRFs used herein has indeed been criticized by [Fry and Pagan \(2011\)](#), who claim that considering the median response as the central estimate of interest may be inaccurate since the median contains information from different identified models, following from the different accepted draws of the rotation matrix (identification uncertainty). For robustness purpose, we also consider and compute IRFs using the median target approach described in [Fry and Pagan \(2011\)](#). The results based on this method are very similar to ones reported in the paper and are available from the authors upon request.

2.4. Multipliers

We estimate the model with G_t and GDP_t in levels and normalized with an estimate of real potential GDP. This is particularly important as our main objective is to provide estimates for the government spending multiplier. [Ramey and Zubairy \(2018\)](#) show that the usual approach of using log of variables requires an *ex-post* conversion to dollar equivalents of the estimated elasticities that can produce serious bias. The problem is even more acute in nonlinear models and in particular in our model, where it is possible to calculate several multipliers with the exception of the quarters which have the same interest rate, since the *ex-post* conversion requires a factor which is based on the sample average of the ratio of GDP to government spending.

With the kind of normalization just described, there is no need to carry out the *ex-post* conversion that is typically applied in the existing literature (see, e.g., [Ramey, 2011b](#)). Thus, government spending multipliers can be computed directly.¹⁸ Our IRFs represent the change in the variable of interest to a surprise change in government spending. Therefore, throughout the paper we compute and report cumulative multipliers similar to [Ramey \(2011b\)](#), who makes a discrete approximation of the integral of the median IRFs over time horizon $h = 0, 1, \dots, H$ given by

$$\mathcal{M} = \frac{\sum_{h=0}^H y_h}{\sum_{h=0}^H g_h},$$

where y_h and g_h denote the value of the IRF of GDP and government spending at horizon h .¹⁹ As is common in the related literature, we compute IRFs for a horizon of up to $H = 20$ quarters.

¹⁸For more details on the bias caused by the *ex-post* conversion of the elasticities see [Ramey and Zubairy \(2018\)](#) and [Gordon and Krenn \(2010\)](#).

¹⁹We obtain similar results if we compute the multipliers by using numerical integration, through the use of the *Trapezoidal* and *Simpson's* rule, respectively. The goal of these two rules is to give more accurate approximations of the integrals in $\mathcal{M} = \left(\int_0^H y(h)dh \right) / \left(\int_0^H g(h)dh \right)$.

3. MAIN RESULTS

In this section we present the macroeconomic effects of a one standard deviation government spending shock obtained for our baseline specification. For illustrative purposes, we report IRFs for the 5th and 50th percentile. The percentiles are chosen to be representative for the low and high interest rate state, respectively. Moreover, given that a significant share of the policy debate is centred around fiscal stimulus in recessions, the discussion in this paper focuses on a comparison of the 5th and 50th percentile in the recession state. Whenever appropriate, we also highlight differences in the expansion state.²⁰ To make the IRFs in different states comparable, we scale the IRFs such that the IRFs of government spending are equal among states on impact.

The left-hand side panel in Figure 2 shows that the behavior of government spending is similar among interest rate states in recessions. Government spending peaks shortly after impact and is persistently different from zero for the first 9 to 12 quarters of the considered time horizon.

What are the effects on GDP in the low and high interest rate state in recessions? GDP has a hump-shaped IRF, peaks also shortly after impact, and, has a persistently positive IRF in both interest rate states. However, the IRF is larger in the low interest rate state for the first 10 quarters and similar to the IRF in the high interest rate state thereafter.

The net average tax rate closely follows the pattern of real GDP in both interest rate states, which implies, by construction, that nominal current tax receipts increase by more than nominal GDP. This behavior suggests that we are, to some extent, identifying a tax-financed spending expansion in both the low and high interest rate state.²¹

The IRF of the 10Y treasury bond rate at the 5th percentile increases on impact and the quarters thereafter. In contrast, at the 50th percentile the 10Y treasury bond rate

²⁰The full set of IRFs is available on request.

²¹An alternative would be to impose further restrictions on the net average tax rate in order to identify entirely balanced budget or tax-financed spending expansions (see, e.g., [Mountford and Uhlig, 2009](#)).

shows only a modest increase after 7 quarter.

Taking the behavior of GDP and government spending together, the IRFs suggest that, when the interest rate is at the ZLB and the economy is in a recession, a comparable exogenous increase in government spending is more effective in stimulating GDP. Next, the right-hand side panels show the IRFs for the 5th and 50th percentile of the interest rate distribution during expansion. Qualitatively, these IRFs show by and large a similar picture, except for the missing hump-shape in government spending and GDP. Moreover, the figures suggest quantitative differences, which can be assessed by computing multipliers.

The implied multipliers are consistent with the above observations. Panels 3a to 3e in Figure 3 show multipliers for the different percentiles of the interest rate distribution for several time horizons. For instance, the 5 year multipliers in Panel 3e are in the range of 3.79 to 2.66 in the low interest rate state and around 3.05 and 1.01 in the high interest rate state when we ignore the business cycle. Moreover, two key findings stand out: first, multipliers monotonically decline with the increasing interest rate percentile in both recession and expansion; second, multipliers in a recession are higher than in an expansion, independent of the interest rate percentile.

The first key finding, similar to the IRFs above, also suggests that government spending increases are more effective in the low interest rate state. In order to further examine this point, we compute the probability that the cumulative multiplier at the 5th percentile is higher than the one at the 50th percentile at various time horizons.²² To this end, we construct distributions of the difference between multipliers conditional on specific shadow rate percentiles. The difference between multipliers is computed for each of the 10,000 parameter draws from the posterior distribution. The results are presented in Panel 3f and indicate that the probability that the multipliers are higher at the 5th percentile is in

²²While Bayesian estimation precludes the frequentists-style hypothesis testing, our approach can be seen as a way of summarizing the dispersion of the posterior distributions of the multipliers.

the range of 59% to 95%, depending on the time horizon and whether the economy is in a recession or expansion. Moreover, notice that the multipliers for both states are relatively large compared to the VAR literature in general (see, e.g., [Ramey, 2011a](#)) and compared to the findings of [Ramey and Zubairy \(2018\)](#), who report multipliers of at most 1.5 at the ZLB and multipliers below unity away from the ZLB.

The second key finding can also be investigated to a further extent by computing the probability that the cumulative multiplier in a recession is higher than in an expansion at a certain percentile. Panel 3g reports these probabilities at the 5th and 50th percentile for various time horizons. The probabilities range from 83% to 57% at the 5th percentile and from 83% to 90% at the 50th percentile. This suggests that the it is highly likely that the cumulative multiplier in a recession is higher, which is in line with the findings in [Auerbach and Gorodnichenko \(2012, 2013\)](#) and [Fazzari et al. \(2015\)](#), but contradicts with the findings in [Ramey and Zubairy \(2018\)](#). This also makes clear that the timing of fiscal stimulus is important. If a stimulus package is intended to lift the economy out of a recession, but the state of the business cycle has already changed, the package may be less effective than policymakers are hoping for.

In sum, our findings cannot be reconciled with theories that suggest that the government spending multiplier at the ZLB is 1 or below, and lower than in the high interest rate state (see, e.g., [Boneva et al., 2016](#); [Mertens and Ravn, 2014](#); [Aruoba et al., 2018](#)). In addition, our findings, especially for the high interest rate state, contradict with standard Real Business Cycle models (see, e.g., [Baxter and King, 1993](#)) that predict a strong negative wealth effect and low multipliers due to crowding out of consumption.²³

In contrast, our results can be reconciled with New Keynesian DSGE models that predict government spending multipliers at the ZLB in the range of 2 to 5 (see, e.g. [Christiano](#)

²³An increase in government spending lowers the present value of after-tax income. As a consequence, agents lower consumption and increase labor supply. The latter decreases the real wage and higher employment can raise investment.

et al., 2011; Eggertsson, 2010; Woodford, 2011; Davig and Leeper, 2011; Coenen et al., 2012). For instance, in models such as Christiano et al. (2011) the negative wealth effect of a government spending stimulus is weakened by assuming certain model features. As a consequence, co-movement in consumption, investment and real wages due to counter-cyclical markups is possible.²⁴ An increase in government spending raises aggregate output, marginal cost, and expected inflation. Furthermore, the key channel to explain the higher multipliers at the ZLB is related to the real interest rate. As expected inflation increases and the nominal interest rate is zero, the real interest rate must fall.²⁵ In consequence, private consumption and investment increases, raises aggregate output, marginal cost and expected inflation once more. Thus, the ZLB amplifies the effects of government spending on output.

In order to underline this point, we have estimated augmented versions of our baseline specification following the ‘*intermediate strategy*’ suggested by Burnside et al. (2004, p. 94) and followed, for instance, in Ramey (2011b) or Fragetta and Gasteiger (2014). The strategy is to specify $Y_t = [G_t, GDP_t, T_t, i_t^{10y}, \bullet_t, F_t]'$, where \bullet_t is a stand-in for variables of interest that we rotate into Y_t one at a time. The rotation variables are: normalized real private consumption (non-durables and services), C_t ; normalized real private nonresidential fixed investment, I_t ; annualized rate of inflation based on the CPI for all urban consumers: all items, π_t ; normalized real average hourly earnings of production and nonsupervisory employees in manufacturing, w_t ; and normalized total hours of wage and salary workers on nonfarm payrolls, N_t .

²⁴Thus, in such models multipliers can be large even without considering the ZLB (see, Galí et al., 2007).

²⁵Notice that the increase in the 10y treasury bond rate that we find in our baseline analysis is consistent with the New Keynesian DSGE model in general (see, e.g., Bekaert et al., 2010). However, the difference in predictions between the low and high interest rate state in recession or expansion are an open question, both theoretically and empirically. We rationalize the stronger increase in IRFs at the low interest rate state by the delayed increase in the nominal interest rate, when the ZLB is binding in a New Keynesian DSGE model. Thus, the increase of more distant expected short-term nominal interest rates may translate into increases in the long-term bond yield. In contrast, when the ZLB is not binding, then the nominal interest rate responds on impact, which may have less or no effect on long-term bond yields.

The results are depicted in Figure 4. Again we focus on the recession state, i.e., the IRFs on the LHS.²⁶ The IRFs of G_t , GDP_t , and T_t , are qualitatively similar to the IRFs discussed above. Moreover, we observe that real private consumption is stimulated to a similar extent in both the low and high interest rate state. However, real private investment increases far more in the low interest rate state. The differences may be due to a different response of inflation and therefore also of the real interest rate. Panel 4c and 4d depict these responses. One can see that the increase in inflation is much higher on impact in the low interest rate state. Likewise, the *ex-post* real interest rate, computed as the difference of the 10Y treasury bond yield less inflation, shows that on impact and the subsequent two quarters the *ex-post* real interest rate declines more in the low interest rate state.²⁷

Next, also the IRFs of the real wage and hours are remarkable. First, in both interest rate states the real wage responds positively on impact but the IRFs are not different from zero. Second, in both states hours respond positively on impact with a hump-shaped IRF. Although the impact and peak response is higher in the high interest state, the IRF remains persistently higher for longer in the low interest rate state.

Thus, overall the IRFs of the low interest rate state in a recession are fairly in line with New Keynesian DSGE models that predict large multipliers at the ZLB: the real interest rate declines, consumption and especially investment increase and at the same time hours respond positively while the real wage does hardly respond. In a New Keynesian DSGE model, the latter can be due to a nominal wage rigidity.

One may be concerned about the extent to which the IRFs from our augmented version can be compared to the predictions from a theoretical model. In many theoretical analyses

²⁶The IRFs during expansions in the RHS panels of Figure 4 overlap for most variables, which makes it difficult to reconcile the IRFs with a theoretical model.

²⁷Ideally, one would like to compute the IRFs of expected inflation and/or the *ex-ante* real interest rate to be fully consistent with the New Keynesian DSGE model. However, this is not feasible within our framework. Nevertheless, the above reported IRFs are approximations that are feasible within our framework.

the effects of government spending at the ZLB crucially hinge on whether the monetary policy instrument is responding. Moreover, in practice there are good reasons to expect that the effective ZLB is not exactly at zero, but below or above zero, see, e.g., the discussions in [Swanson \(2018\)](#), [Swanson and Williams \(2014\)](#), [Bernanke and Reinhart \(2004\)](#) or [Woodford \(2011\)](#). In addition, this effective ZLB may be difficult to estimate. Thus, in light of these considerations, we think that our framework is able to capture realistic ZLB episodes by considering the lower percentiles of the interest rate distribution in recessions. Therefore the augmented versions of our baseline specification is one available tool to assess the support of theoretical predictions in the data from our point of view.

4. ROBUSTNESS

The purpose of this section is to assess the robustness of our results with regard to our baseline specification described in Section 2.2 above. We follow three lines of inquiry. First, we maintain the identification approach with sign restrictions detailed in Section 2.3 and assess the role of limited information. In particular, we discuss results for variations of our baseline specification. Second, we use an alternative strategy to account for fiscal foresight based on forecast errors instead of growth in the forecast of government spending. Finally, we use our baseline specification, but identify the government spending shock via timing instead of sign restrictions. It turns out that our baseline results are robust to almost all of these modifications of the research design. The exception are the findings for the alternative strategy to account for fiscal foresight based on forecast errors. In this case we do not find a notable difference between multipliers in the low and high interest rate state for time horizons of three years or longer. All other findings are confirmed.

4.1. The Role of Interaction Terms and Limited Information

The key distinguishing feature of our model relative to linear VAR models widely used in the literature estimating the fiscal multiplier are the interaction terms that allow for

state dependence in government spending multipliers. However, our model has additional features that are commonly used in the literature to account for the limited information problem: principal components F_t used to proxy latent unobserved factors driving macroeconomic variables and the growth in government spending forecasts $Z_{t|t-1}$. In order to assess the role of each of these features, we carry out three exercises.

IVAR. We examine the role of the interaction terms in generating our main results by excluding F_t and $Z_{t|t-1}$ from our baseline specification. Nevertheless, we do think that excluding these two features from the model has the potential to bias the estimates. The IVAR multipliers reported in Figure 5 are obtained in the same way as for the baseline specification. Overall, compared to the baseline results (Figure 3), one can observe that multipliers, independent of the state, are lower at the one and two year horizon, but higher at longer horizons. Moreover, on average, multipliers are higher at the low interest rate state and in recessions. Remarkably, while multipliers show a monotonic decline from the 1st to the 75th percentile in expansions, they show a non-monotonic behaviour in recessions, being largest at the 13th percentile, which we consider to be part of the low interest rate state. Thus, even if the IVAR does not address the limited information problem in general or fiscal foresight in particular, our baseline results for the state-dependent government spending multiplier are confirmed qualitatively.

FAIVAR. Next, we examine the contribution of accounting for the general limited information problem by adding principal components F_t to the IVAR specification. We continue to exclude the growth in government spending forecasts $Z_{t|t-1}$. As one can see from Figure 6, independent of the state, the multipliers are lower at all horizons relative to the baseline specification (Figure 3), but higher relative to the IVAR (Figure 5). Therefore, not accounting for fiscal foresight in the specification appears to generate a downward bias in our baseline estimates for the government spending multiplier. Moreover, one can observe that multipliers based on the FAIVAR are higher at the low interest rate

state and in recessions. Finally, independent of the state of the business cycle, there is a monotonic decline from the 1st to the 75th percentile as in the baseline specification. The latter suggests that adding the principle components removes the non-monotonicity of multipliers in recessions observed for the IVAR. In sum, the findings for the FAIVAR confirm our findings for the baseline specification.

IVAR-X. Finally, we focus on the effect of controlling for fiscal foresight by adding government spending forecasts $Z_{t|t-1}$ in our specification, but excluding principal components F_t . The multipliers in Figure 7 are lower than the baseline multipliers in Figure 3 for the one and two year horizon, but larger at longer horizons. At the same time, these multipliers are higher compared to the IVAR (5). Thus, not addressing fiscal foresight in our specification implies an upward bias in our estimates at longer horizons. In addition, the IVAR-X multipliers are again higher at the low interest rate state and in recessions. However, there is again a non-monotonicity in multipliers in recessions, which suggests that this non-monotonicity emerges due to not accounting for the general limited information problem.

4.2. Forecast Errors

While the FAIVAR specification in the robustness exercise above did not account for fiscal foresight on purpose, it is possible to do so within the FAIVAR model, but without relying on the exogenous variable $Z_{t|t-1}$. Doing so enables us to assess robustness of our main results to an alternative strategy of accounting for fiscal foresight. Following [Auerbach and Gorodnichenko \(2012\)](#), we construct the forecast error variable, FE_t , use it as endogenous variable and abandon the exogenous SPF forecast. Thus, we turn the FAIVAR-X model described in equation (1) into a FAIVAR model, by suppressing the vector of exogenous variables $Z_{t|t-1}$. The vector of endogenous variables is now given by $Y_t = [FE_t, G_t, GDP_t, T_t, i_t^{10y}, F_t]'$, where, the FE_t series is constructed as the difference between the forecast made at previous quarter $t - 1$ for the contemporaneous quarter

t minus the actual government spending. Intuitively, the forecast error represents the surprise experienced by private agents about the actual volume of government spending policy.²⁸ We also provide evidence that FE_t has high explanatory power regarding the variation in growth of G_t and is therefore a relevant instrument to control for fiscal foresight that cannot be considered weak.

The procedure to derive government spending multipliers does not change in comparison to section 2. However, the set of sign restrictions that we apply to derive IRFs has to be modified as illustrated in Table 1. In order to derive an unexpected government spending shock, we restrict the forecast error to be positive for at least 1 quarter and, Government Spending and GDP to be positive for at least 4 quarters. Figure 8 shows the multipliers that we obtain with this specification.

In comparison to the baseline results (Figure 3), the estimated multipliers behave similar along several dimensions: independent of the state, multipliers decline with the horizon, and, on average, are higher at the low interest rate state. However, remarkable differences between the low and high interest rate state can only be found for the 1 and 2 year horizon, but not at longer horizons. In contrast, the pattern that multipliers are higher in recessions than in expansions is more robust as it is evident at all considered time horizons.

The computed probabilities that the cumulative multipliers at the 5th percentile are higher than the ones at the 50th percentile at various time horizons in Panel 8f are consistent with this interpretation of results. They are lower or equal to their counterparts in Panel 3f and, while the probability is above 50% at the 1 and 2 year horizon, it is equal to or below 50% at longer horizons. Likewise the probabilities that the cumulative multipliers in recession are higher than the ones in expansion at various time horizons are displayed in Panel 3g. Again, these probabilities are lower or equal to their counterparts in Panel 3g and range from 89% to 64%, depending on the time horizon and interest rate state.

²⁸Appendix A contains further information on the computation of this variable.

In sum, with this alternative method to account for fiscal foresight, our main results for the state-dependent government spending multiplier are fully confirmed at the 1 and 2 year horizon. Over this short horizon, multipliers are higher in the low interest rate state relative to the high interest rate state. However, at longer horizons we can only confirm our findings regarding the business cycle: multipliers are higher in recessions independent of the interest rate state.

4.3. The Role of Sign Restrictions

The findings for the IVAR model in Subsection 4.1 above suggests that the non-linearity introduced by the interaction term in the IVAR can explain the discrepancy between our main findings of rather large multipliers in comparison to the rather low multipliers found in linear VARs that utilise sign-restrictions.²⁹ For instance, our IVAR results are not directly comparable to estimates based on the linear structural VAR model with sign-restrictions in the important paper by [Mountford and Uhlig \(2009\)](#). Their set-up differs in many ways from ours: they consider a different sample, identify additional shocks and identify three policy scenarios (deficit spending, deficit-financed tax cuts and a balanced budget spending expansion). In contrast, in line with [Ramey and Zubairy \(2018\)](#) and others, we just identify the government spending shock. However, the most relevant difference between the approach in this paper and [Mountford and Uhlig \(2009\)](#) may be that we not only restrict government spending to increase for four quarters, but also that output has to do so. Therefore, one may be concerned whether our findings critically hinge on this particular identification approach. In order to address this concern, we re-estimated our baseline specification, the FAIVAR-X model, but identify the government spending shock with timing restrictions by applying the Cholesky decomposition. This strategy

²⁹Note that an alternative way of capturing the potential non-linearity emerging from the ZLB would be to use a regime-switching VAR with sign-restrictions. An example of such an approach is [Liu et al. \(2019\)](#).

follows [Blanchard and Perotti \(2002\)](#). The government spending shock is identified by ordering government spending as first variable, i.e., one assumes that government spending does not respond contemporaneously to any of the other variables in our model due to implementation and legislation lags. More important, the sign and duration of the response of output to a shock in government spending is not restricted.

Figure 9 reports multipliers for this exercise. A first observation is that independent of the time horizon, multipliers are lower compared to our main results (Figure 3). At the low interest rate state, multipliers are higher relative to the high interest rate state and decline monotonically from the 1st to the 75th percentile of the interest rate distribution. Both of these findings are independent of the state of the business cycle. In addition, consistent with our baseline findings, multipliers in recessions exceed multipliers in expansions for most percentiles at all time horizons, however, the differences are very small.

Moreover, also for this exercise we have re-calculated the probabilities that the cumulative multipliers at the 5th percentile exceed their counterparts at the 50th percentile at various time horizons, see Panel 9f. Relative to our baseline results in Panel 3f, this probability is higher at almost each time horizon in both recession and expansion. It ranges from 80% to 93% in recession and from 81% to 99% in expansion.

Finally, Panel 9g reports the probability that the cumulative multiplier in a recession exceeds the one in an expansion at a certain percentile. In comparison to the probabilities for the main results in Panel 3g, the probabilities appear to be equal or lower, depending on the time horizon. The probability ranges between 67% and 56% for the 5th percentile and between 42% and 74% for the 50th percentile. Nevertheless, consistent with our main results, the probabilities suggest that it is likely that the cumulative multipliers in a recession are higher than the ones in an expansion. Overall, these findings suggest that the choice of sign-restrictions that generated our main results is not crucial for our findings regarding the size of the government spending multiplier at the ZLB.

5. CONCLUSIONS

This paper sheds light on the question of whether the government spending multiplier at the ZLB is larger than in normal times. To this end, we implement a Factor-Augmented Interacted VAR model and use sign restrictions to identify government spending shocks. This framework allows us to account for fiscal foresight as well as the generic limited information problem inherent in VARs and to estimate state-dependent multipliers at all percentiles of the nominal interest rate distribution, both during recessions and expansions.

In contrast to the existing state-dependent estimates, we find convincing evidence that government spending multipliers are larger in low interest rate states than in high interest rate states. The multipliers during recessions are also larger than during expansions and largest during recessions in the low interest rate state. For our sample from 1966 to 2015, the 5-year cumulative multipliers in a recession are in the range of 3.56 to 3.79 at the ZLB. The corresponding ones away from the ZLB are between 2.31 and 3.05. These results are robust along several important dimensions including modifications of the baseline specification, alternatives of accounting for fiscal foresight, and identification via timing restrictions.

We also estimate augmented versions of our baseline specification with consumption, investment, inflation, hours worked, and the real wage in order to obtain a more complete picture of the transmission mechanism of a government spending shock. In addition, we find significant evidence for a decline in the real interest rate, an increase in consumption and especially investment, and, at the same time hours respond positively while the real wage does hardly respond. These predictions are typical for New Keynesian DSGE models. Thus, we conclude that the government spending multiplier at the ZLB is larger than in normal times as predicted by many recently developed New Keynesian DSGE models.

REFERENCES

- Amendola, A., Di Serio, M., Fragetta, M., and Melina, G. (2019). The Euro-Area Government Spending Multiplier at the Effective Lower Bound. IMF Working Paper 19/133, International Monetary Fund.
- Aruoba, S. B., Cuba-Borda, P., and Schorfheide, F. (2018). Macroeconomic Dynamics Near the ZLB: a Tale of Two Countries. *Review of Economic Studies*, 85(1):87–118.
- Auerbach, A. J. and Gorodnichenko, Y. (2012). Measuring the Output Responses to Fiscal Policy. *American Economic Journal: Economic Policy*, 4(2):1–27.
- Auerbach, A. J. and Gorodnichenko, Y. (2013). Fiscal Multipliers in Recession and Expansion. In Alesina, A. and Giavazzi, F., editors, *Fiscal Policy after the Financial Crisis*, pages 63–98. University of Chicago Press.
- Bai, J. and Ng, S. (2007). Determining the Number of Primitive Shocks in Factor Models. *Journal of Business and Economic Statistics*, 25(1):52–60.
- Baxter, M. and King, R. G. (1993). Fiscal Policy in General Equilibrium. *American Economic Review*, 83(3):315–334.
- Bekaert, G., Cho, S., and Moreno, A. (2010). New Keynesian Macroeconomics and the Term Structure. *Journal of Money, Credit and Banking*, 42(1):33–62.
- Bernanke, B. S., Boivin, J., and Eliasziw, P. S. (2005). Measuring the Effects of Monetary Policy: A Factor-Augmented Vector Autoregressive (FAVAR) Approach. *Quarterly Journal of Economics*, 120(1):387–422.
- Bernanke, B. S. and Reinhart, V. R. (2004). Conducting Monetary Policy at Very Low Short-Term Interest Rates. *American Economic Review*, 94(2):85–90.
- Blanchard, O. J. and Perotti, R. (2002). An Empirical Characterization of the Dynamic Effects of Changes in Government Spending and Taxes on Output. *Quarterly Journal of Economics*, 117(4):1329–1368.
- Boneva, L. M., Braun, R. A., and Waki, Y. (2016). Some Unpleasant Properties of Loglinearized Solutions When the Nominal Rate is Zero. *Journal of Monetary Economics*, 84:216–232.
- Burnside, C., Eichenbaum, M., and Fisher, J. D. M. (2004). Fiscal Shocks and their Consequences. *Journal of Economic Theory*, 115(1):89–117.
- Caggiano, G., Castelnuovo, E., and Pellegrino, G. (2017). Estimating the Real Effects of Uncertainty Shocks at the Zero Lower Bound. *European Economic Review*, 100:257–272.
- Canova, F. and De Nicolò, G. (2002). Monetary Disturbances Matter for Business Fluctuations in the G-7. *Journal of Monetary Economics*, 49(6):1131–1159.

- Christiano, L. J., Eichenbaum, M., and Rebelo, S. (2011). When Is the Government Spending Multiplier Large? *Journal of Political Economy*, 119(1):78–121.
- Coenen, G., Erceg, C. J., Freedman, C., Furceri, D., Kumhof, M., Lalonde, R., Laxton, D., Lindé, J., Mourougane, A., Muir, D., Mursula, S., de Resende, C., Roberts, J., Roeger, W., Snudden, S., Trabandt, M., and Veld, J. i. (2012). Effects of Fiscal Stimulus in Structural Models. *American Economic Journal: Macroeconomics*, 4(1):22–68.
- Cogley, T. and Sargent, T. J. (2005). Drift and Volatilities: Monetary Policies and Outcomes in the Post WWII U.S. *Review of Economic Dynamics*, 8(2):262–302.
- Crafts, N. and Mills, T. C. (2013). Fiscal Policy in a Depressed Economy: Was There a 'Free Lunch' in 1930s' Britain? Working Paper 9273, Centre for Economic Policy Research.
- Davig, T. and Leeper, E. M. (2011). Monetary-Fiscal Policy Interactions and Fiscal Stimulus. *European Economic Review*, 55(2):211–227.
- Dickey, D. A. and Fuller, W. A. (1979). Distribution of the Estimators for Autoregressive Time Series With a Unit Root. *Journal of the American Statistical Association*, 74(366):427–431.
- Eggertsson, G. B. (2010). What Fiscal Policy is Effective at Zero Interest Rates? In Acemoglu, D. and Woodford, M., editors, *NBER Macroeconomics Annual*, volume 25, pages 59–112. MIT Press, Cambridge, MA.
- Favero, C. A. and Giavazzi, F. (2008). Should the Euro Area be Run as a Closed Economy? *American Economic Review*, 98(2):138–145.
- Fazzari, S. M., Morley, J., and Panovska, I. (2015). State-dependent Effects of Fiscal Policy. *Studies in Nonlinear Dynamics and Econometrics*, 19(3).
- Fragetta, M. and Gasteiger, E. (2014). Fiscal Foresight, Limited Information and the Effects of Government Spending Shocks. *Oxford Bulletin of Economics and Statistics*, 76(5):667–692.
- Fry, R. and Pagan, A. (2011). Sign Restrictions in Structural Vector Autoregressions: A Critical Review. *Journal of Economic Literature*, 49(4):938–960.
- Galí, J., López-Salido, J. D., and Vallés, J. (2007). Understanding the Effects of Government Spending on Consumption. *Journal of the European Economic Association*, 5(1):227–270.
- Gordon, R. J. and Krenn, R. (2010). The End of the Great Depression 1939-41: Policy Contributions and Fiscal Multipliers. NBER Working Paper 16380, National Bureau of Economic Research.
- Gürkaynak, R. S., Sack, B., and Swanson, E. (2005). The Sensitivity of Long-Term Interest Rates to Economic News: Evidence and Implications for Macroeconomic Models. *American Economic Review*,

95(1):425–436.

Jordà, Ò. (2005). Estimation and Inference of Impulse Responses by Local Projections. *American Economic Review*, 95(1):161–182.

Kwiatkowski, D., Phillips, P. C. B., Schmidt, P., and Shin, Y. (1992). Testing the Null Hypothesis of Stationarity Against the Alternative of a Unit Root: how Sure Are We That Economic Time Series Have a Unit Root? *Journal of Econometrics*, 54(1-3):159–178.

Leeper, E. M., Walker, T. B., and Yang, S.-C. S. (2013). Fiscal Foresight and Information Flows. *Econometrica*, 81(3):1115–1145.

Lippi, M. and Reichlin, L. (1994). Common and Uncommon Trends and Cycles. *European Economic Review*, 38(3-4):624–635.

Liu, P., Theodoridis, K., Mumtaz, H., and Zanetti, F. (2019). Changing Macroeconomic Dynamics at the Zero Lower Bound. *Journal of Business and Economic Statistics*, 37(3):391–404.

Mertens, K. and Ravn, M. O. (2014). Fiscal Policy in an Expectations Driven Liquidity Trap. *Review of Economic Studies*, 81(4):1637–1667.

Miyamoto, W., Nguyen, T. L., and Sergeyev, D. (2018). Government Spending Multipliers under the Zero Lower Bound: Evidence from Japan. *American Economic Journal: Macroeconomics*, 10(3):247–277.

Mountford, A. and Uhlig, H. (2009). What are the Effects of Fiscal Policy Shocks? *Journal of Applied Econometrics*, 24(6):960–992.

Primiceri, G. E. (2005). Time Varying Structural Vector Autoregressions and Monetary Policy. *Review of Economic Studies*, 72(252):821–852.

Ramey, V. A. (2011a). Can Government Purchases Stimulate the Economy? *Journal of Economic Literature*, 49(3):673–685.

Ramey, V. A. (2011b). Identifying Government Spending Shocks: It’s All in the Timing. *Quarterly Journal of Economics*, 126(1):1–50.

Ramey, V. A. and Zubairy, S. (2018). Government Spending Multipliers in Good Times and in Bad: Evidence from U.S. Historical Data. *Journal of Political Economy*, 126(2):850–901.

Roush, J. E. (2007). The Expectations Theory Works for Monetary Policy Shocks. *Journal of Monetary Economics*, 54(6):1631–1643.

Rubio-Ramírez, J. F., Waggoner, D. F., and Zha, T. (2010). Structural Vector Autoregressions: Theory of Identification and Algorithms for Inference. *Review of Economic Studies*, 77(2):665–696.

Sá, F., Towbin, P., and Wieladek, T. (2014). Capital Inflows, Financial Structure and Housing Booms.

Journal of the European Economic Association, 12(2):522–546.

Swanson, E. (2018). The Federal Reserve Is Not Very Constrained by the Lower Bound on Nominal Interest Rates. NBER Working Paper 25123.

Swanson, E. T. and Williams, J. C. (2014). Measuring the Effect of the Zero Lower Bound on Medium- and Longer-Term Interest Rates. *American Economic Review*, 104(10):3154–3185.

Towbin, P. and Weber, S. (2013). Limits of Floating Exchange Rates: The Role of Foreign Currency Debt and Import Structure. *Journal of Development Economics*, 101:179–194.

Uhlig, H. (2005). What are the Effects of Monetary Policy on Output? Results from an Agnostic Identification Procedure. *Journal of Monetary Economics*, 52(2):381–419.

Woodford, M. (2011). Simple Analytics of the Government Expenditure Multiplier. *American Economic Journal: Macroeconomics*, 3(1):1–35.

Wu, J. C. and Xia, F. D. (2016). Measuring the Macroeconomic Impact of Monetary Policy at the Zero Lower Bound. *Journal of Money, Credit and Banking*, 48(2-3):253–291.

A. DATA

GENERAL INFORMATION. Table 2 contains an overview on the data that we use. If appropriate, nominal variables are transformed into real variables by dividing by the GDP implicit price deflator. Moreover, real variables in levels, if appropriate, are normalized by dividing by real potential GDP. The forecast error that we use is the forecast error for the annualized growth rate of real government spending.

FORECAST ERROR. Our measure of the forecast error, FE_t builds on the annualized growth rate of real government purchases forecast for time t at time $t - 1$, i.e.,

$$\Delta G_{t|t-1}^F \equiv \left[\left(\frac{G_{t|t-1}^e}{G_{t-1|t-1}^e} \right)^4 - 1 \right] \times 100,$$

The data source is the Mean Responses of Real Federal Government Consumption Expenditures & Gross Investment (RFEDGOV) and Real State and Local Government Consumption Expenditures & Gross Investment (RSLGOV). $G_{t|t-1}^e$ is the sum of RFEDGOV3 and RSLGOV3, $G_{t-1|t-1}^e$ is the sum of RFEDGOV2 and RSLGOV2.

As our objective is to compute a series of surprise increases in government spending, we need to control for real-time data. The forecast error for the growth rate of government spending is defined as

$$FE_t \equiv \left[\left(\frac{G_t^{1st}}{G_{t-1}^{1st}} \right)^4 - 1 \right] \times 100 - \Delta G_{t|t-1}^F$$

Thus, for this purpose, we have downloaded first release data on real government consumption expenditures and gross investment: state and local (RGSL) from this [website](#) and real government consumption and gross investment: federal (RGF) from this [website](#). All in quarterly vintages (Billions of real dollars, seasonally adjusted). G_t^{1st} is the sum of RGSL and RGF.

Notice that the SPF data is only available from 1981Q4. Thus, for earlier periods, as in [Auerbach and Gorodnichenko \(2012\)](#), we take advantage of the fact that SPF is also quite similar to Greenbook forecasts prepared for FOMC meetings. Thus, we splice data from SPF and Greenbook forecasts and obtain a series which goes from 1966Q4 to 2015Q4.

B. EXPLANATORY POWER OF THE FORECAST ERROR

Following [Ramey \(2011b\)](#), pp.25-29) we examine the explanatory power of FE_t . In particular, we run regressions such as

$$\Delta G_t = \beta_0 FE_t + \sum_{k=1}^L \beta_k FE_{t-k} + \varepsilon_t, \quad \Delta G_t \equiv \left[\left(\frac{G_t}{G_{t-1}} \right)^4 - 1 \right] \times 100. \quad (\text{B.1})$$

Such a regression can shed light on the question of whether FE_t (or lags of it) can explain part of the variation of the growth in G_t . A high F-statistic is an indicator that this is the case and that FE_t can be considered a relevant instrument to control for fiscal foresight. The results in the second column of [Table 3](#) suggest that FE_t is a relevant instrument and that it cannot be considered a weak instrument as the F-statistics are way above the rule-of-thumb critical value of 10.

Notice that even with two lags, $L = 1$, FE_t has considerable predictive power. This is surprising as, by construction, one would expect that it has only predictive power for $L = 0$. The reason for the latter is that FE_t represents a measure for the unpredictable component of ΔG_t . Therefore our results for $L > 0$ imply that the unpredictable components in ΔG_t have some persistence.

The third column in [Table 3](#) reports the marginal F-statistic for a regression of the growth rate of G_t on the explanatory variables used in the baseline specification. However,

FE_t is excluded, i.e.,

$$\Delta G_t = \sum_{k=1}^L \beta_{k,G} G_{t-k} + \sum_{k=1}^L \beta_{k,GDP} GDP_{t-k} + \sum_{k=1}^L \beta_{k,T} T_{t-k} + \sum_{k=1}^L \beta_{k,i^{10y}} i_{t-k}^{10y} + \varepsilon_t. \quad (B.2)$$

Table 3 reports low marginal F-statistics and values for R-squared, which suggests that FE_t is a relevant instrument.

FIGURES

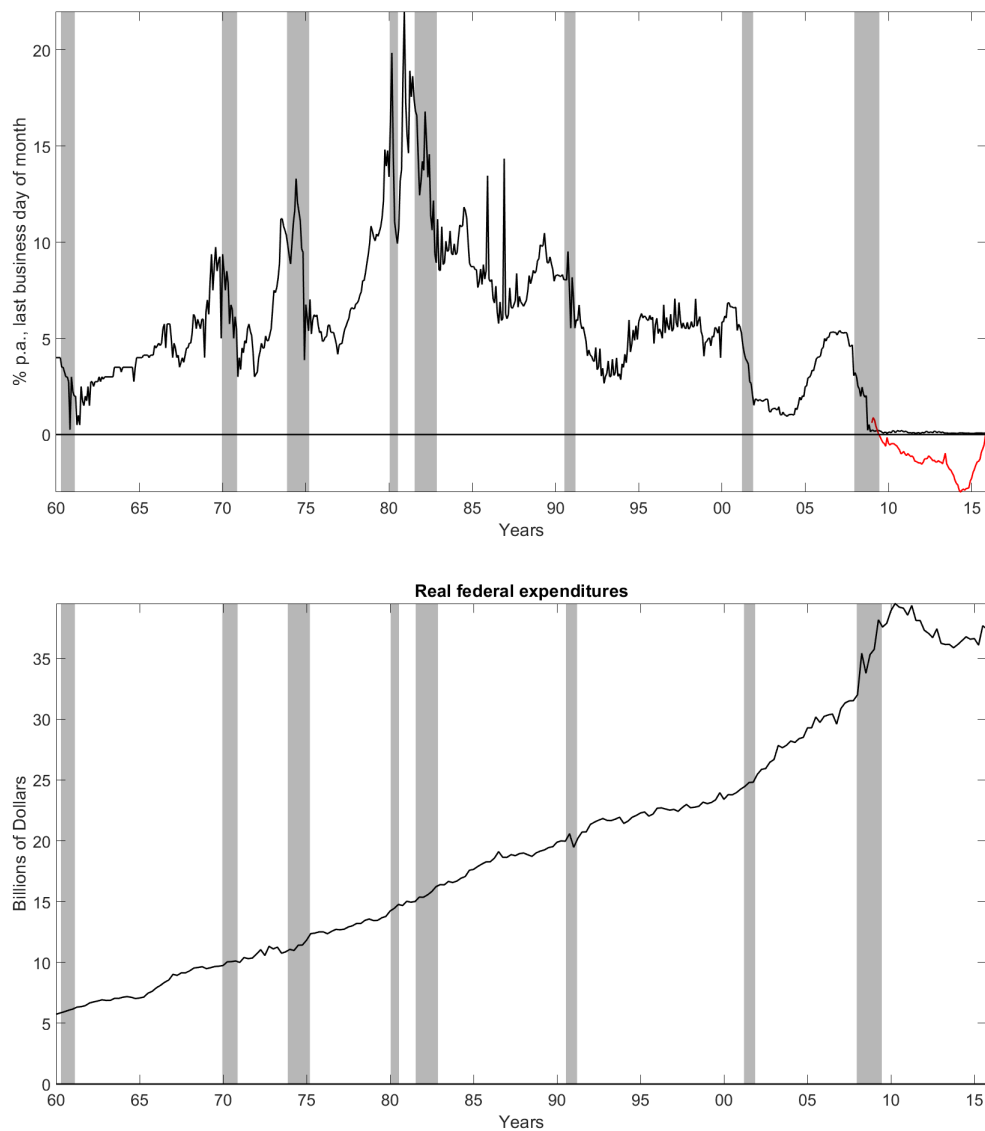


Figure 1: Monetary and fiscal policy, 1960Q1 to 2015Q4. The shaded areas indicate recessions according to NBER.

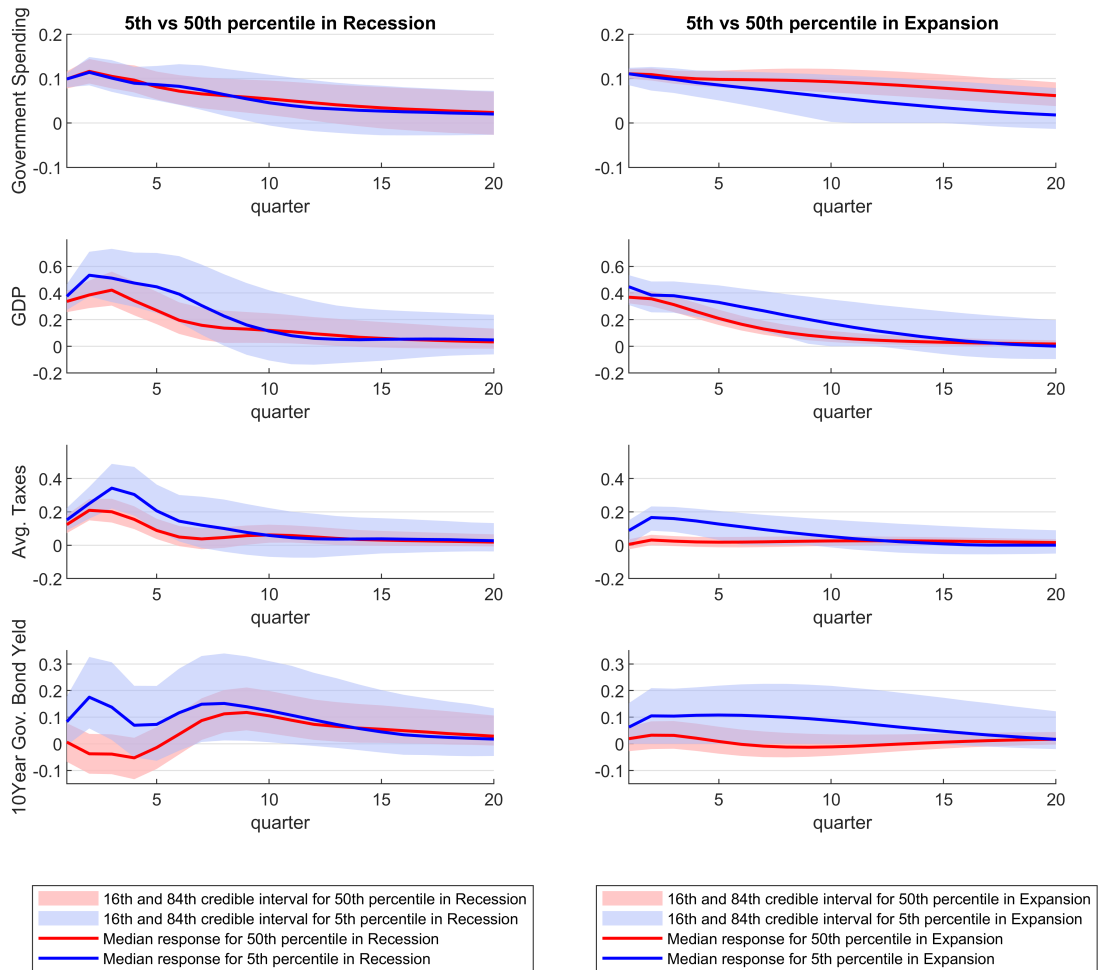
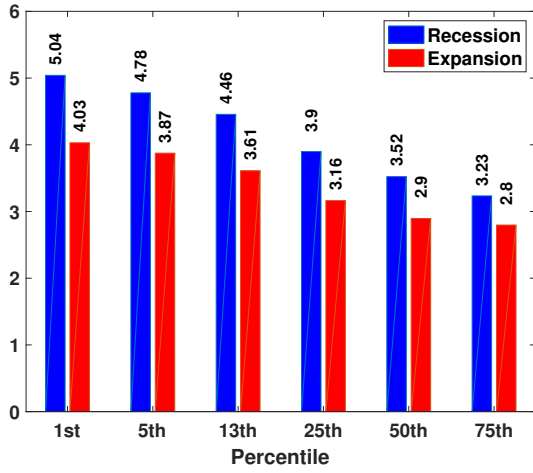
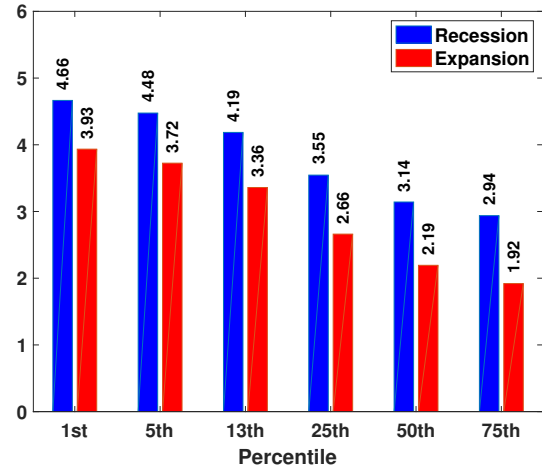


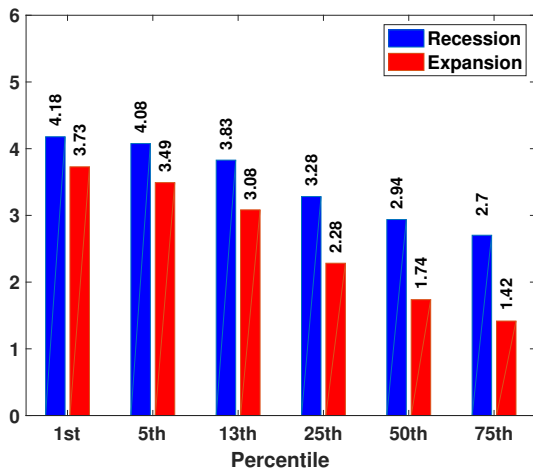
Figure 2: IRFs to a one standard deviation government spending shock for the baseline specification, FAIVAR-X. The blue solid lines represent the median of the median distribution of IRFs for each parameter draw, and the red dotted lines report the 16th and 84th of the set of accepted impulse-response functions for all parameter draws.



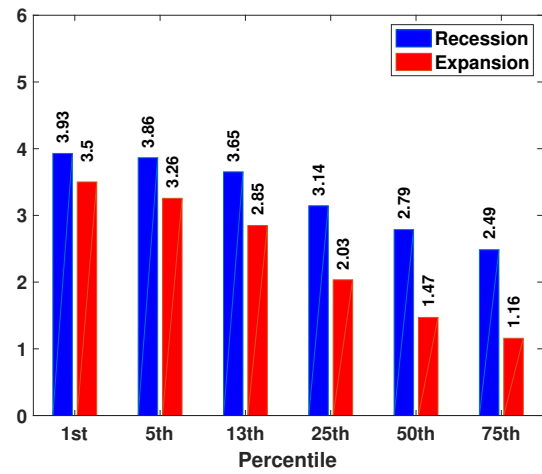
(a) 1 Year



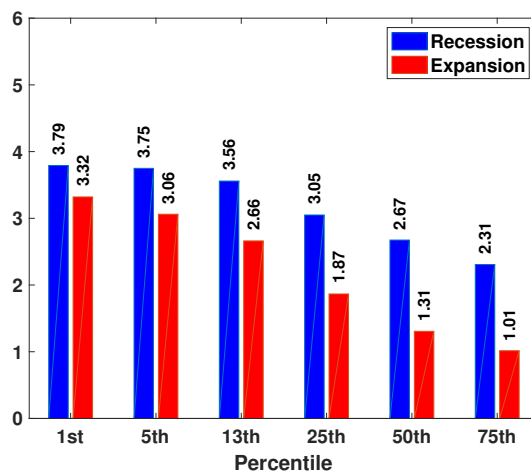
(b) 2 Year



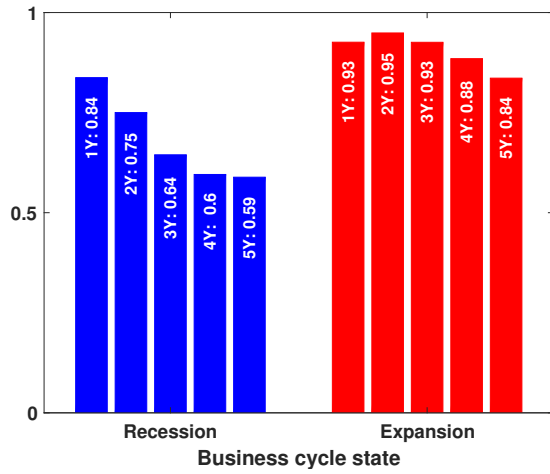
(c) 3 Year



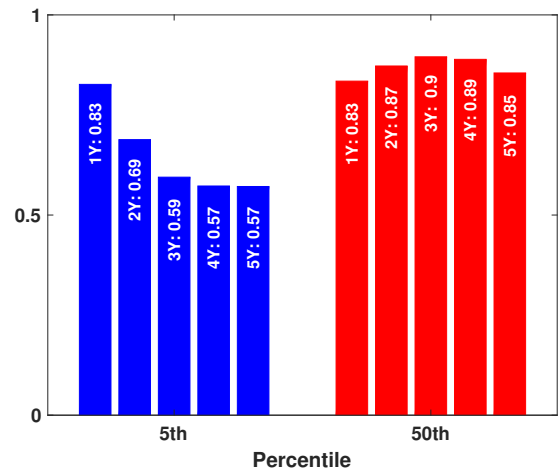
(d) 4 Year



(e) 5 Year

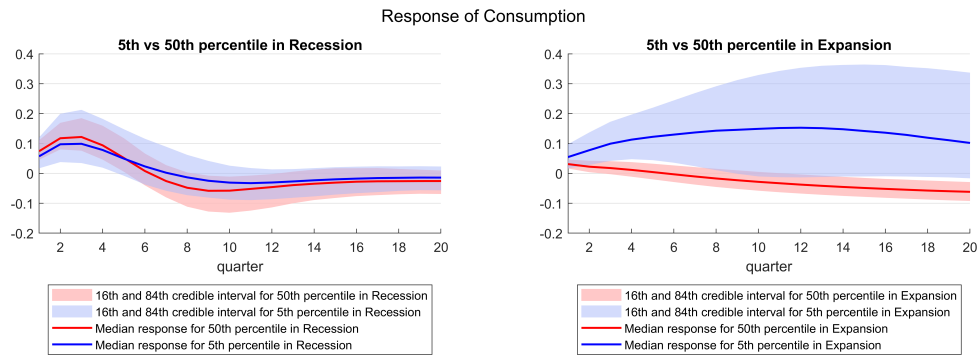


(f) Probability that the cumulative multiplier at the 5th percentile is higher than the one at the 50th percentile.

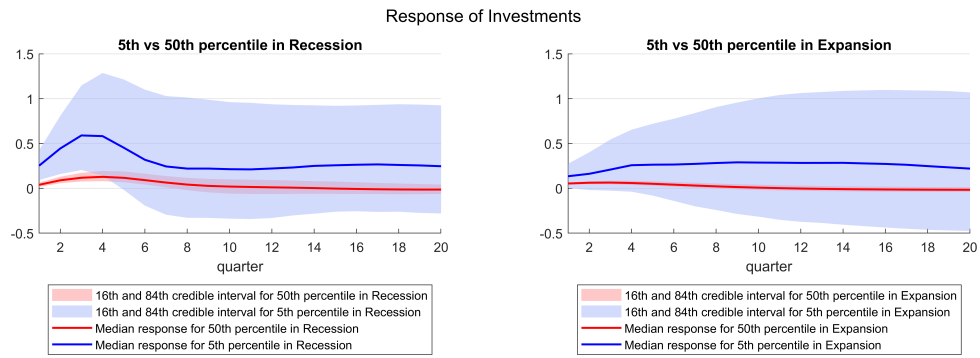


(g) Probability that the cumulative multiplier in a recession is higher than in an expansion.

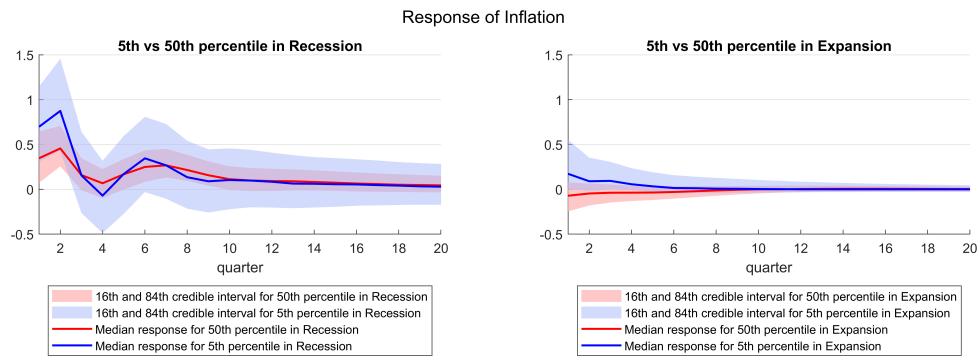
Figure 3: Cumulative government spending multipliers at several time horizons and probabilities for differences in multipliers for the FAIVAR-X model.



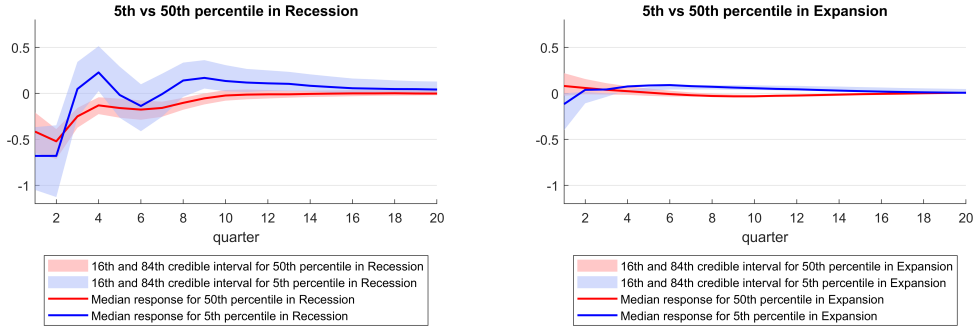
(a) Consumption



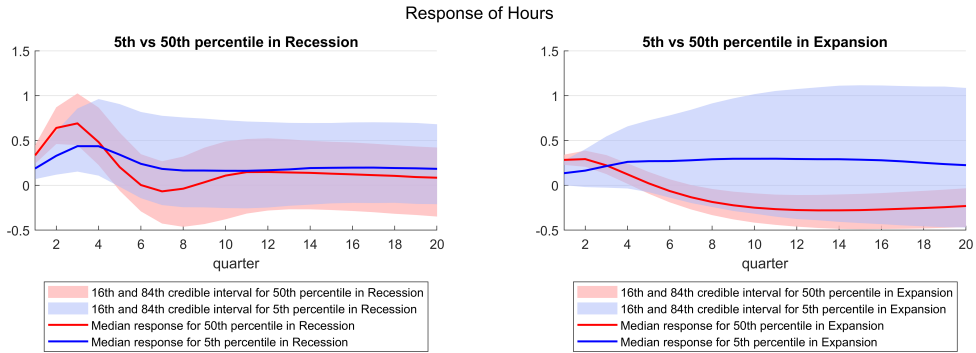
(b) Investment



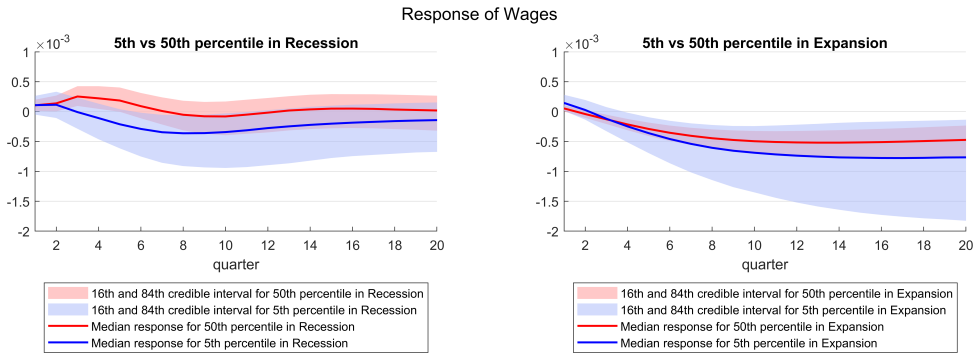
(c) Inflation



(d) *Ex-post* real interest rate



(e) Hours



(f) Real wage

Figure 4: IRFs to a one standard deviation government spending shock for the augmented baseline specification, FAIVAR-X. The blue solid lines represent the median of the median distribution of IRFs for each parameter draw, and the red dotted lines report the 16th and 84th of the set of accepted impulse-response functions for all parameter draws.

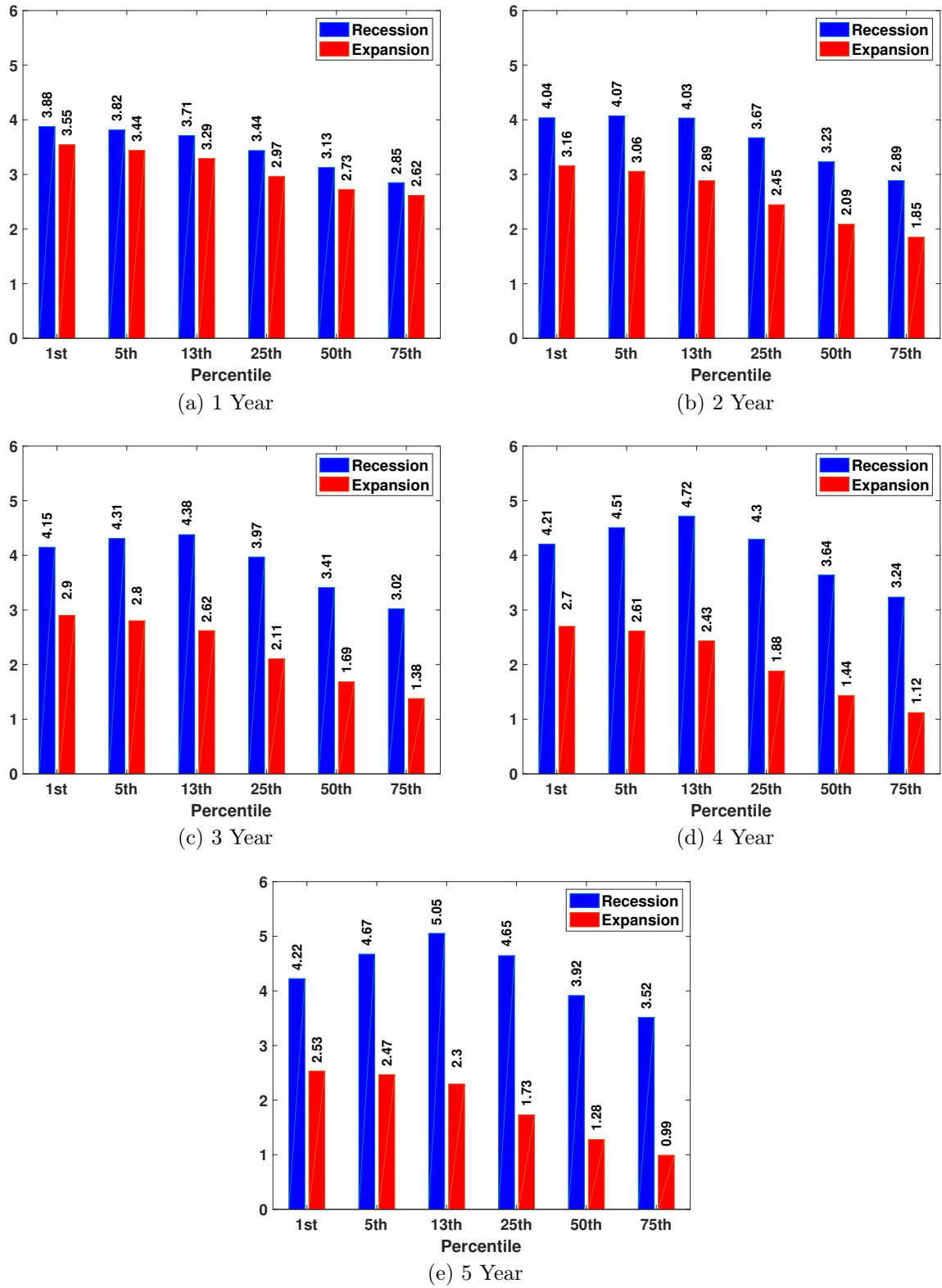
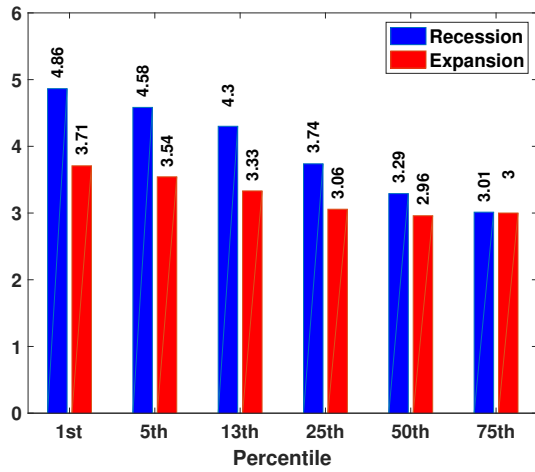
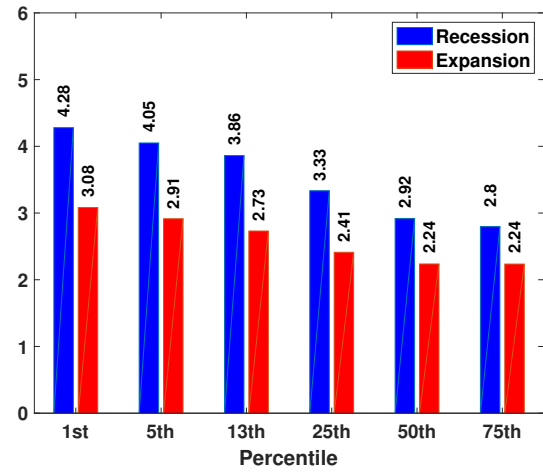


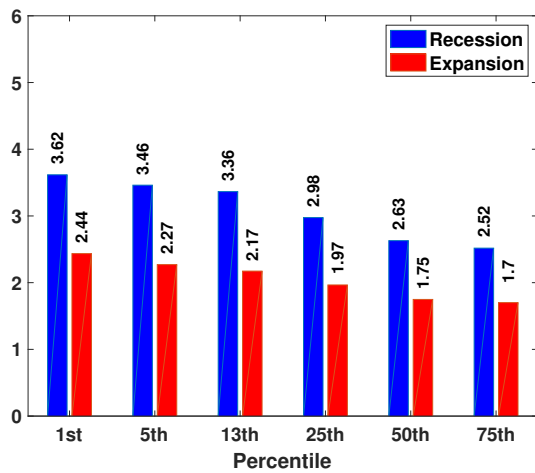
Figure 5: Cumulative government spending multipliers at several time horizons for the IVAR model.



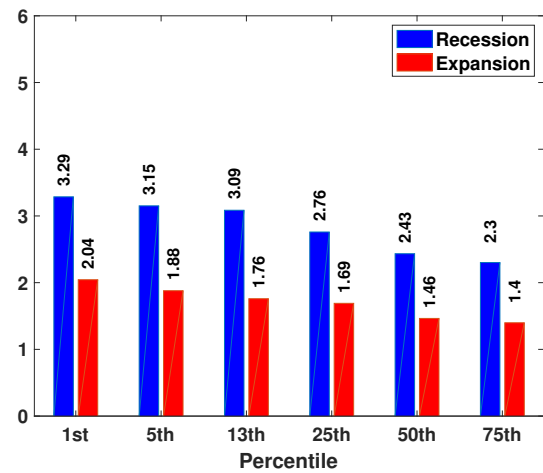
(a) 1 Year



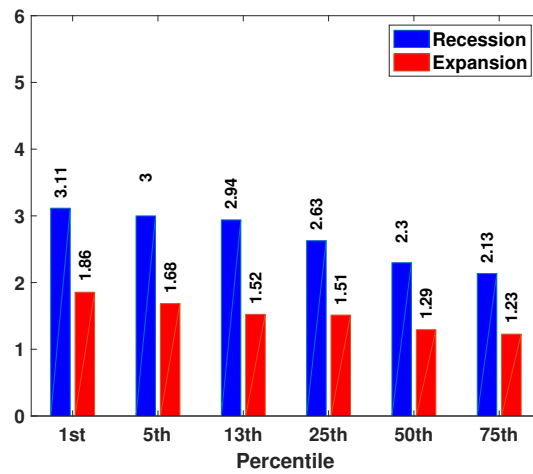
(b) 2 Year



(c) 3 Year

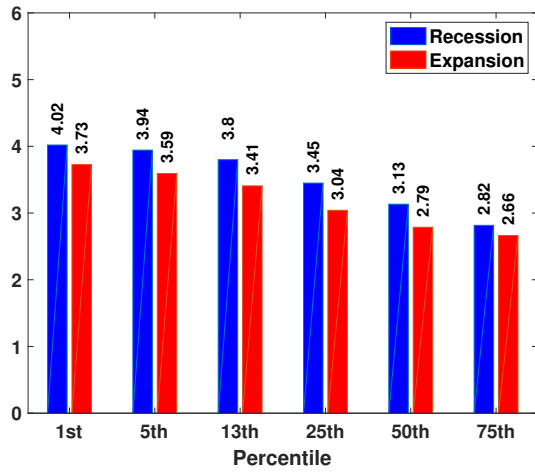


(d) 4 Year

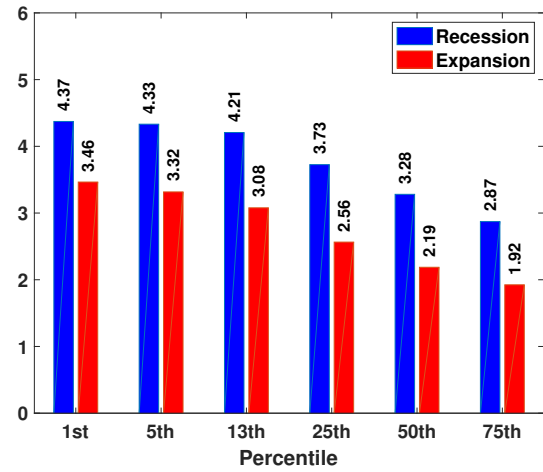


(e) 5 Year

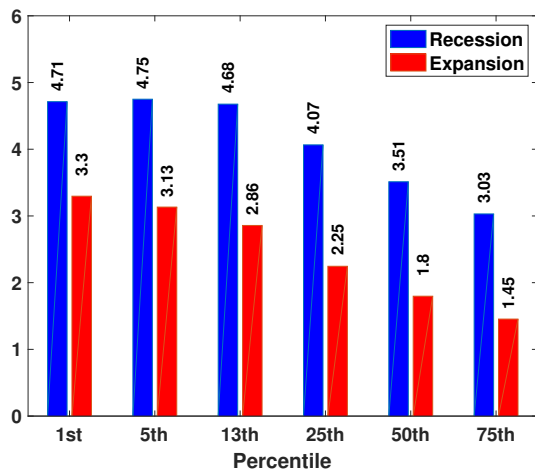
Figure 6: Cumulative government spending multipliers at several time horizons for the FAIVAR model.



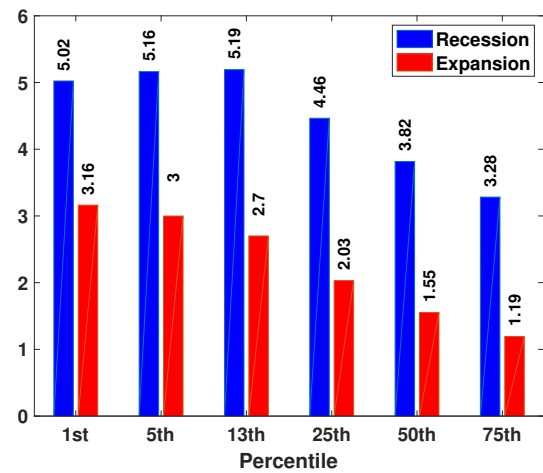
(a) 1 Year



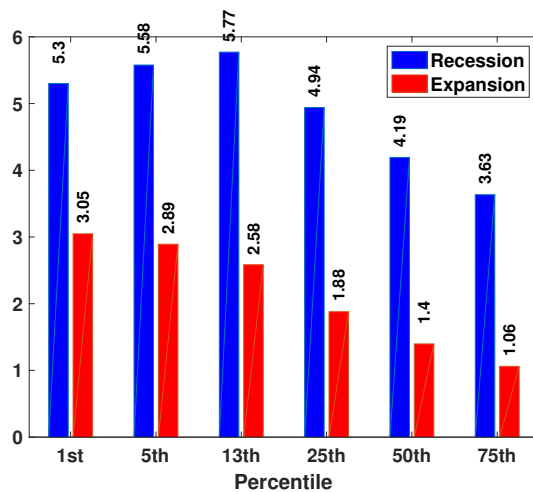
(b) 2 Year



(c) 3 Year

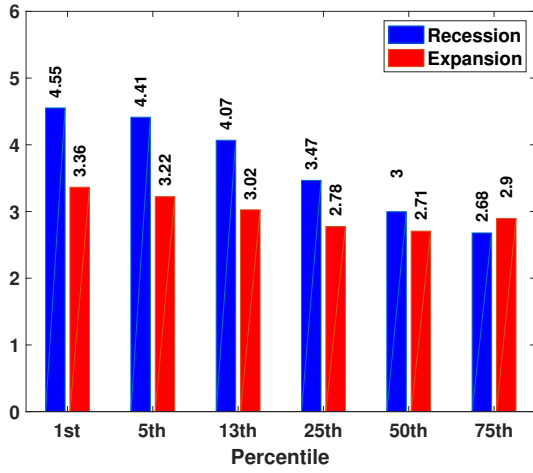


(d) 4 Year

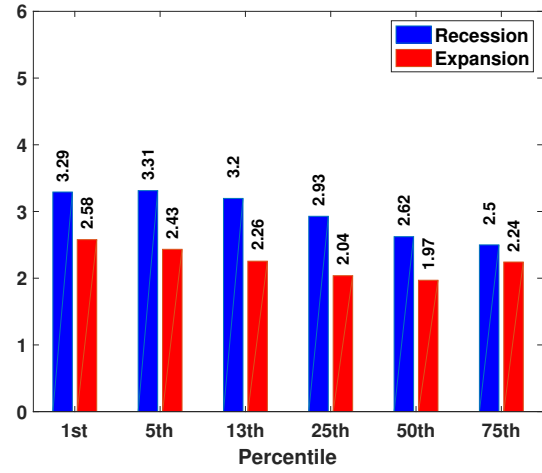


(e) 5 Year

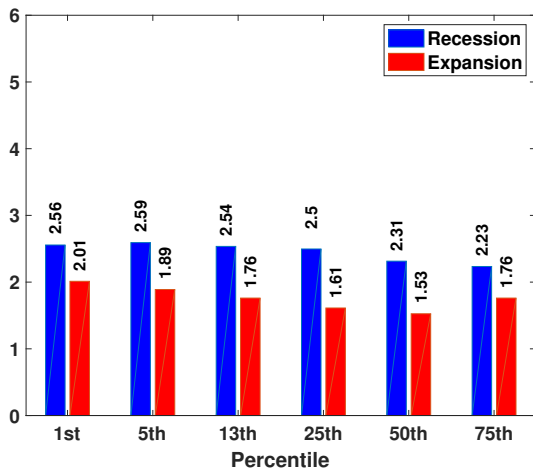
Figure 7: Cumulative government spending multipliers at several time horizons for the IVAR-X model.



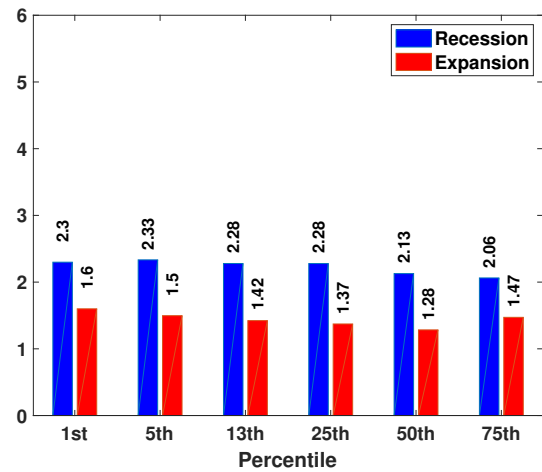
(a) 1 Year



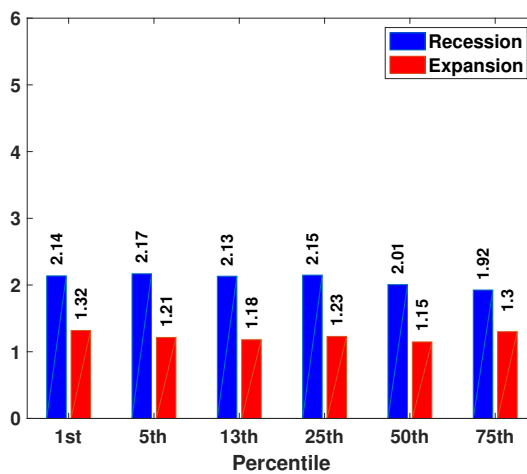
(b) 2 Year



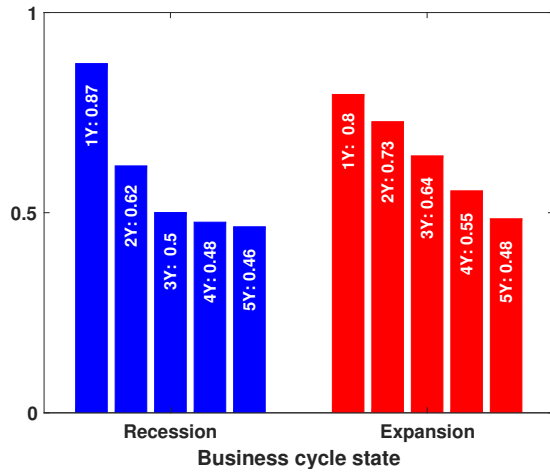
(c) 3 Year



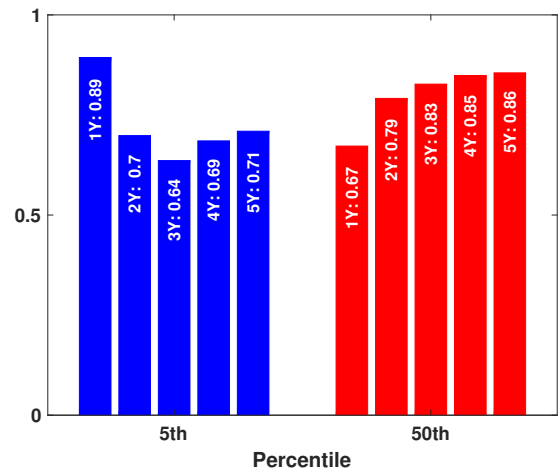
(d) 4 Year



(e) 5 Year

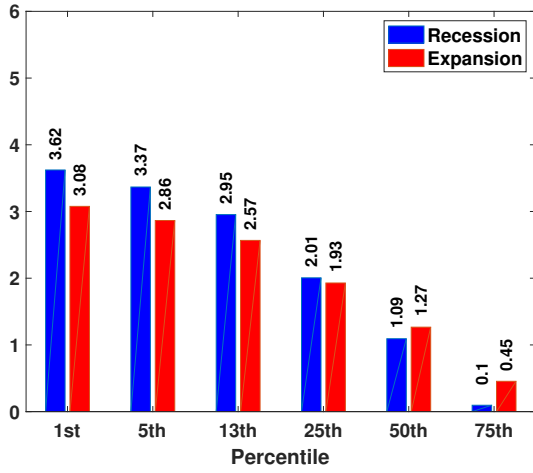


(f) Probability that the cumulative multiplier at the 5th percentile is higher than the one at the 50th percentile.

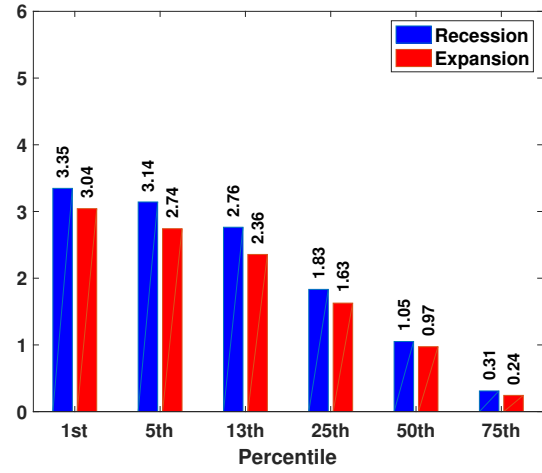


(g) Probability that the cumulative multiplier in a recession is higher than in an expansion.

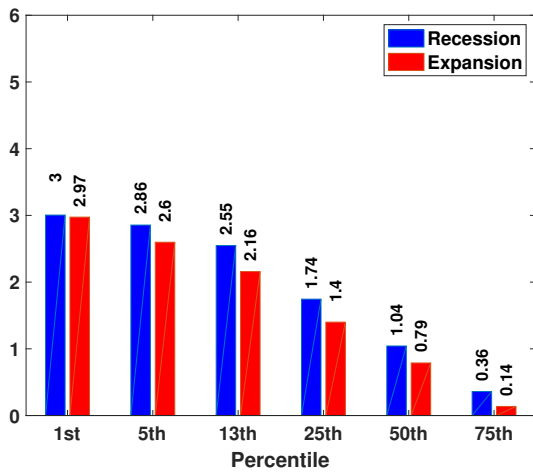
Figure 8: Cumulative government spending multipliers at several time horizons and probabilities for differences in multipliers for the FAIVAR model with forecast errors, FE_t .



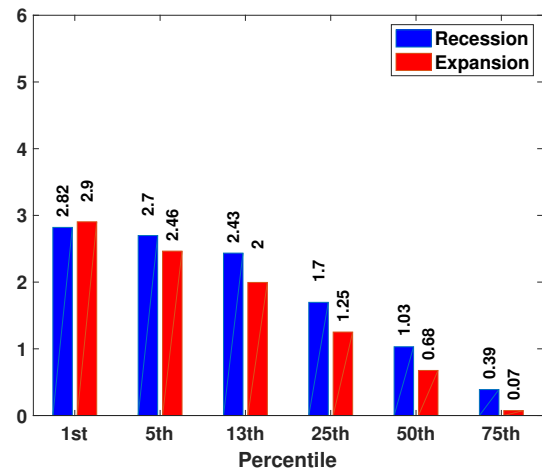
(a) 1 Year



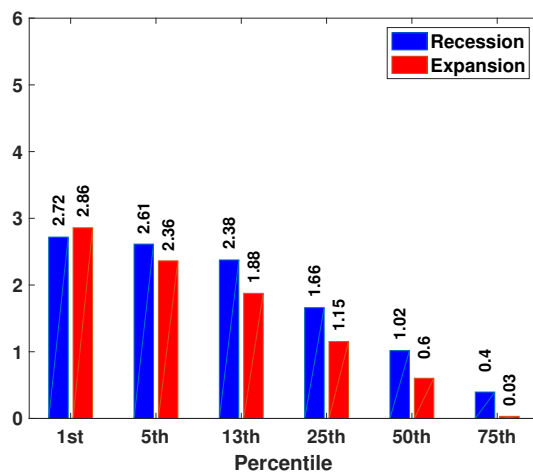
(b) 2 Year



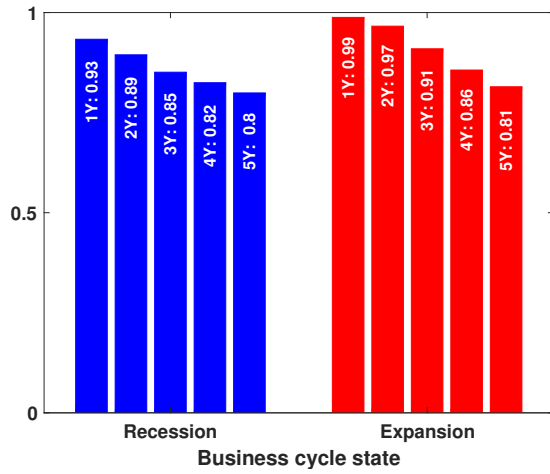
(c) 3 Year



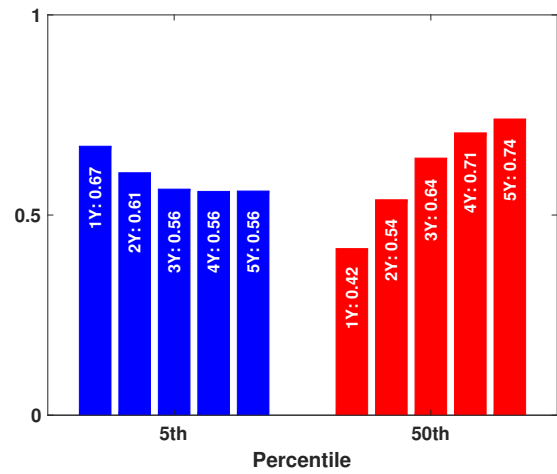
(d) 4 Year



(e) 5 Year



(f) Probability that the cumulative multiplier at the 5th percentile is higher than the one at the 50th percentile.



(g) Probability that the cumulative multiplier in a recession is higher than in an expansion.

Figure 9: Cumulative government spending multipliers at several time horizons and probabilities for differences in multipliers for the FAIVAR-X model with identification via timing-restrictions.

TABLES

Table 1: Sign Restrictions for Identifying the Government Spending Shock.

Baseline			Robustness		
Variable	Sign	Periods	Variable	Sign	Periods
			FE_t	+	1
G_t	+	4	G_t	+	4
GDP_t	+	4	GDP_t	+	4
T_t	*		T_t	*	

Table 2: Data.

Series	Source	Mnemonic code	Transformation
Forecasts of Real Federal Government Consumption Expenditures & Gross Investment	Federal Reserve Bank of Philadelphia	RFEDGOV	
Forecasts of Real State and Local Government Consumption Expenditures and Gross Investment	Federal Reserve Bank of Philadelphia	RSLGOV	
Greenbook projections of Real Federal Government Consumption and Gross Investment	Federal Reserve Bank of Philadelphia	gRGOVF	
Greenbook projections of Real State and Local Government Consumption and Gross Investment	Federal Reserve Bank of Philadelphia	gRGOVSL	
Real Government Consumption and Gross Investment: Federal	Federal Reserve Bank of Philadelphia	RGF	
Real Government Consumption and Gross Investment: State and Local	Federal Reserve Bank of Philadelphia	RGSL	
Forecast Error of the Annualized Growth Rate of Real Government Purchases	All the above variables are used for the computation, see Appendix A.		Normalized
Nominal Government Consumption Expenditures and Gross Investment	US Bureau of Economic Analysis	GCE	Real, Normalized
Federal Government Current Tax Receipts	US Bureau of Economic Analysis	W006RC1Q027SBEA	Real, Average w.r.t. GDP
State and Local Government Current Tax Receipts	US Bureau of Economic Analysis	W070RC1Q027SBEA	Real, Average w.r.t. GDP
Real Gross Domestic Product	US Bureau of Economic Analysis	GDPC1	Normalized
Gross Domestic Product: Implicit Price Deflator	US Bureau of Economic Analysis	GDPDEF	
Shadow Federal Funds Rate	Wu and Xia (2016)		
Real Potential Gross Domestic Product	US Congressional Budget Office	GDPPOT	
Personal Consumption Expenditures: Nondurable Goods	U.S. Bureau of Economic Analysis	PCND	Normalized
Personal Consumption Expenditures: Services	U.S. Bureau of Economic Analysis	PCESV	Normalized
Private Nonresidential Fixed Investment	U.S. Bureau of Economic Analysis	PNFI	Normalized
Hours of Wage and Salary Workers on Nonfarm Payrolls: Total	U.S. Bureau of Economic Analysis	TOTLQ	
Average Hourly Earnings of Production and Nonsupervisory Employees: Manufacturing	U.S. Bureau of Economic Analysis	CES3000000008	Normalized
Consumer Price Index for All Urban Consumers: All Items in U.S. City Average	U.S. Bureau of Economic Analysis	CPIAUCSL	

Table 3: Explanatory Power of FE_t .^a

	R-squared	F-statistic	Marginal F-statistic
$L = 0$			
1966Q4-2015Q4	0.261	68.71	
1966Q4-2015Q4	0.060		3.05
$L = 1$			
1966Q4-2015Q4	0.266	35.19	
1966Q4-2015Q4	0.071		3.65

^a For each lag length L the first line reports results for regression (B.1). The second line reports results for regression (B.2). In the case of $L = 0$, (B.2) uses contemporaneous values.

Recently Published Working Papers

- WP 04/2020:** The Government Spending Multiplier at the Zero Lower Bound: Evidence from the United States
- WP 03/2020:** Price setting frequency and the Phillips Curve
- WP 02/2020:** Automation, Stagnation, and the Implications of a Robot Tax
- WP 01/2020:** Relative consumption, relative wealth, and long-run growth: When and why is the standard analysis prone to erroneous conclusions?
- WP 07/2019:** The impact of reducing the pension generosity on inequality and schooling
- WP 06/2019:** Using Age-Structure for a Multi-Stage Optimal Control Model with Random Switching Time
- WP 05/2019:** Does One Size Fit All in the Euro Area? Some Counterfactual Evidence
- WP 04/2019:** Size and persistence matter: Wage and employment insurance at the micro level
- WP 03/2019:** Endogenously (Non-)Ricardian Beliefs
- WP 02/2019:** Optimal time allocation in active retirement
- WP 01/2019:** Do monetary unions dream of structural reforms?
- WP 02/2018:** Aggregate public-private remuneration patterns in South Africa
- WP 01/2018:** Health insurance, endogenous medical progress, and health expenditure growth
- WP 08/2017:** Medical Progress, Demand for Health Care, and Economic Performance
- WP 07/2017:** You can't always get what you want? A Monte Carlo analysis of the bias and the efficiency of dynamic panel data estimators
- WP 06/2017:** Robots and the skill premium: an automation-based explanation of wage inequalities
- WP 05/2017:** Boosting Taxes for Boasting about Houses: Status Concerns in the Housing Market
- WP 04/2017:** The Marriage Gap: Optimal Aging and Death in Partnerships
- WP 03/2017:** Redistributive effects of the US pension system among individuals with different life expectancy
- WP 02/2017:** The Impact of Climate Change on Health Expenditures
- WP 01/2017:** Optimal investment and location decisions of a firm in a flood risk area using Impulse Control Theory
- WP 11/2016:** Hyperbolic Discounting Can Be Good For Your Health
- WP 10/2016:** On the long-run growth effect of raising the retirement age

More working papers can be found at <http://www.econ.tuwien.ac.at/wps/>

Please cite working papers from the ECON WPS like this example:

Freund, I., B. Mahlberg and A. Prskawetz. 2011. "A Matched Employer-Employee Panel Data Set for Austria: 2002-2005." *ECON WPS 01/2011*. Institute of Mathematical Methods in Economics, Vienna University of Technology.

**The Series “Vienna University of Technology Working Papers
in Economic Theory and Policy” is published by the**

Research Group Economics
Institute of Statistics and Mathematical Methods in Economics
Vienna University of Technology

Contact

Research Group Economics
Institute of Statistics and Mathematical Methods in Economics
Vienna University of Technology

Wiedner Hauptstraße 8-10
1040 Vienna
Austria

Editorial Board

Alexia Fürnkranz-Prskawetz
Emanuel Gasteiger
Nawid Siassi
Hardy Hanappi

Phone: +43-1-58801-1053- 1
Fax: +43-1-58801-1053-99
E-mail: wps@econ.tuwien.ac.at