

Affleck-Graves, J. F.; Barr, G. D.I.

**Article**

## Gold shares or krugerrands: Which is the better investment?

South African Journal of Business Management

**Provided in Cooperation with:**

University of Stellenbosch Business School (USB), Bellville, South Africa

*Suggested Citation:* Affleck-Graves, J. F.; Barr, G. D.I. (1986) : Gold shares or krugerrands: Which is the better investment?, South African Journal of Business Management, ISSN 2078-5976, African Online Scientific Information Systems (AOSIS), Cape Town, Vol. 17, Iss. 2, pp. 49-55, <https://doi.org/10.4102/sajbm.v17i2.1034>

This Version is available at:

<https://hdl.handle.net/10419/217921>

**Standard-Nutzungsbedingungen:**

Die Dokumente auf EconStor dürfen zu eigenen wissenschaftlichen Zwecken und zum Privatgebrauch gespeichert und kopiert werden.

Sie dürfen die Dokumente nicht für öffentliche oder kommerzielle Zwecke vervielfältigen, öffentlich ausstellen, öffentlich zugänglich machen, vertreiben oder anderweitig nutzen.

Sofern die Verfasser die Dokumente unter Open-Content-Lizenzen (insbesondere CC-Lizenzen) zur Verfügung gestellt haben sollten, gelten abweichend von diesen Nutzungsbedingungen die in der dort genannten Lizenz gewährten Nutzungsrechte.

**Terms of use:**

*Documents in EconStor may be saved and copied for your personal and scholarly purposes.*

*You are not to copy documents for public or commercial purposes, to exhibit the documents publicly, to make them publicly available on the internet, or to distribute or otherwise use the documents in public.*

*If the documents have been made available under an Open Content Licence (especially Creative Commons Licences), you may exercise further usage rights as specified in the indicated licence.*



<https://creativecommons.org/licenses/by/4.0/>

# Gold shares or krugerrands — which is the better investment?

J.F. Affleck-Graves and G.D.I. Barr

University of Cape Town, Rondebosch

---

In this study we examine the performance of krugerrands *vis-à-vis* gold shares on the Johannesburg Stock Exchange over the period 1980 – 1983. Using the Markowitz portfolio selection model and Sharpe's capital market theory we are able to demonstrate that over the past few years, krugerrands have produced sub-optimal returns for the South African investor. This follows because in each year the investor would have been better off in some combination of gold shares and treasury bills rather than in krugerrands, no matter what risk level he chose. Furthermore, even in the naive case where the investor merely buys the gold share index, krugerrands are shown to be an inferior investment. *S. Afr. J. Bus. Mgmt.* 1986, 17: 49 – 55

In hierdie studie word die prestasie van Krugerrande *vis-à-vis* goudaandele op die Johannesburgse Effektebeurs ondersoek vir die periode 1980 – 1983. Die skrywers maak gebruik van Markowitz se portefeuljeseleksiemodel en Sharpe se kapitaalmarkt teorie om aan te toon dat die Krugerrand oor die afgelope paar jaar sub-optimale opbrengste gelewer het vir die Suid-Afrikaanse belegger. Dit is ooglopend aangesien die belegger elke jaar beter sou gedoen het met 'n kombinasie van goudaandele en skatkiswissels, eerder as Krugerrande, afgesien van die risikovlak gekies. Verder word Krugerrande as 'n swakker belegging aangetoon, selfs waar die naïewe belegger slegs die goudaandeel-indeks koop.

*S. Afr. Tydskr. Bedryfsl.* 1986, 17: 49 – 55

## Introduction

Gold bullion sales and the gold price are clearly items of tremendous importance to all South African investors because of the effect they have on the entire economy. But, in addition to their importance because of their overall effect, they are also important investment mediums in their own right. In fact, many South African investors adopt an almost reverential attitude to gold and discussion of the pros and cons of investment in the metal is liable to attract patriotic responses. It is therefore not surprising that South African investors are well catered for in terms of potential gold-related investments, with two distinct gold-based investment mediums being quoted on the Johannesburg Stock Exchange (JSE). These are the gold shares (quoted companies) and the krugerrand.

In recent years a great deal of interest has been shown in these two investment mediums with most investors holding an investment in either gold shares or krugerrands or both. It is therefore of considerable interest to examine the *ex-post* behaviour of gold shares *vis-à-vis* the krugerrand. In particular, it is of interest to determine whether *ex-post*, gold shares or krugerrands have provided the better investment opportunity for a South African investor or indeed, whether the investor's funds should have been divided with a certain proportion of them being placed in krugerrands and a certain proportion in gold shares.

## The portfolio selection model

In 1952 Markowitz published his seminal paper on portfolio selection. This paper has formed the basis of all modern portfolio theory and is based on the assumption that only two factors need to be considered in choosing a portfolio, namely the return the investor can expect to receive from holding the portfolio and the uncertainty or risk associated with this return. Traditionally return has been calculated in the accepted manner as receipts (selling price plus dividends) less expenditure (purchase price) divided by expenditure. This method has been followed in this article.

The measurement of risk has proved much more contentious but the most widely accepted measure has been the deviation of return and this approach has been adopted in this article. The result is that any portfolio can be represented as a single point in a risk-return diagram. In fact, all possible portfolios (that is, all possible combinations of securities) will fill some region in this risk-return space. The basis of Markowitz's contribution to Finance is that a set of portfolios can be found which will dominate all other portfolios in the sense that for these portfolios it is not possible to obtain either a

J.F. Affleck-Graves\*

Graduate School of Business, University of Cape Town, Private Bag, Rondebosch 7700 Republic of South Africa

G.D.I. Barr

Department of Mathematical Statistics, University of Cape Town, Private Bag, Rondebosch, 7700 Republic of South Africa

\*To whom correspondence should be addressed

Accepted February 1986

greater expected return without incurring greater risk or to obtain smaller risk without decreasing expected return. This special set of portfolios is known as the efficient set and it is clear that any investor would only wish to hold a portfolio belonging to this efficient set. This is shown diagrammatically in Figure 1 where curve AB represents the efficient set.

William Sharpe (1964) used Markowitz's basic ideas to extend the portfolio selection model and derived the well-known capital market theory. This theory was based on the assumption that investors were faced not only with a choice of risky assets but that they could also invest in a so-called 'risk free' asset such as treasury bills. Sharpe in fact derived his capital market theory on the assumption that investors could borrow or lend at the same risk-free rate. That is, it is assumed that the investor will be able to borrow additional funds to invest in risky assets. In this situation the sketch in Figure 1 will be altered to that which the situation in Figure 2 pertains.

The original efficient set AB has been altered by the inclusion of the risk-free asset ( $R_S$ ). The new efficient frontier is represented by the curve  $R_SML$ . Points on the curve AB which were previously efficient are now clearly inefficient because for these points one can obtain higher returns on the curve  $R_SML$  for no additional risk. Any rational investor will therefore choose one of the portfolios on the curve  $R_SML$ .

### The data

The basic data used in this study consisted of the weekly closing price of 45 gold shares quoted on the JSE as well as

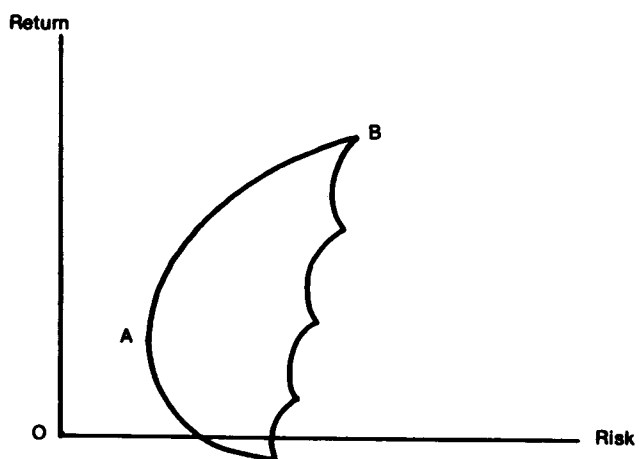


Figure 1 The efficient set of portfolios according to Markowitz (1952)

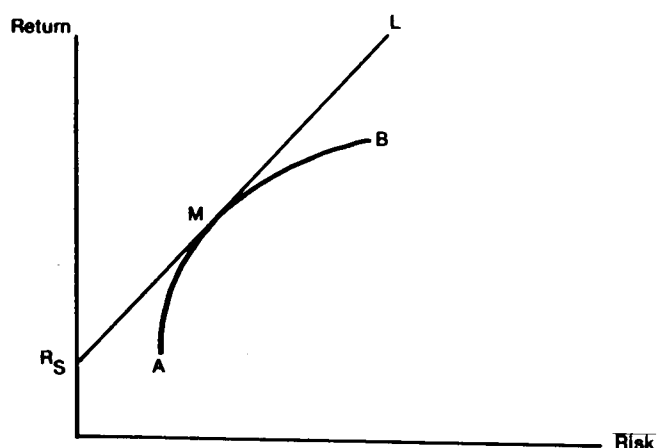


Figure 2 The new efficient frontier after inclusion of the risk free asset ( $R_S$ )

Table 1 Summary of gold index and krugerrand performance

Date	JSE Act. All Gold Index	% Return	Krugerrand	% Return
23.05.80	519		520	
24.12.80	728	40,3	630	21,2
18.12.81	572	-21,4	455	-27,8
20.12.82	792	38,5	568	24,8
12.04.83	813	2,6	549	-3,4
Overall	-	56,6	-	5,6

the weekly closing price of the krugerrand as quoted on the JSE. The following five gold shares were excluded from the study:

1. EGOLI MINING COMPANY LIMITED
2. FALCON MINES LIMITED
3. PRIMROSE GOLD MINING COMPANY (1934) LIMITED
4. SOUTH ROODEPOORT MAIN REEF AREAS LIMITED
5. WITWATERSRAND GOLD MINING COMPANY LIMITED

These five securities were omitted because of the lack of sufficient data on these shares on the UCT computer share data base.

The period for which the data were analysed was 23 May 1980 - 12 April 1983 and a summary of statistics is given in Table 1.

### Selection of efficient portfolios

Using the data described above, efficient portfolios were generated for each of four non-overlapping periods. These periods were: 23 May 1980 - 24 December 1980; 9 January 1981 - 18 December 1981; 8 January 1982 - 20 December 1982; and 4 January 1983 - 12 April 1983.

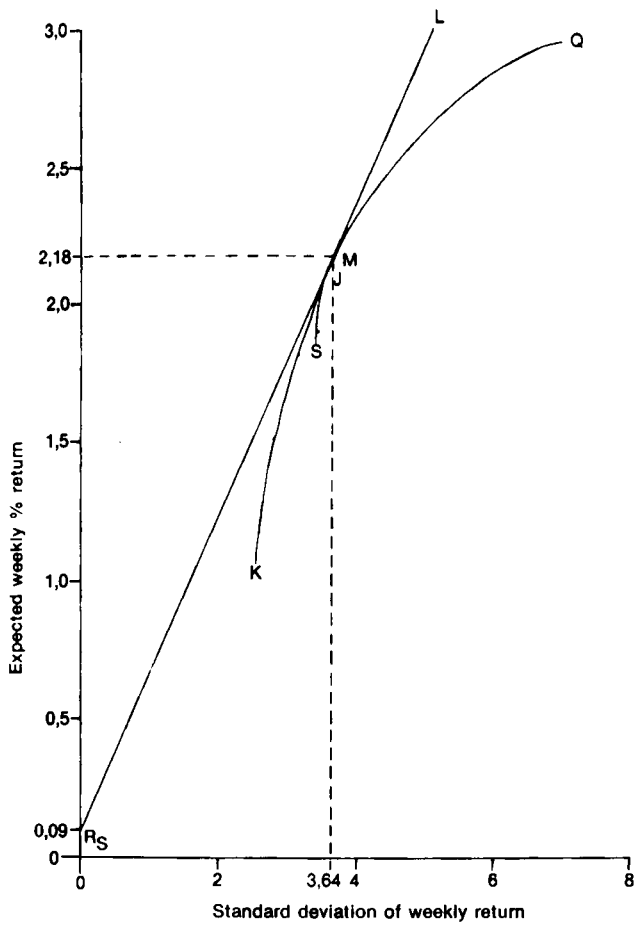
It must be stressed that these four periods were chosen for convenience and not because of any market or economic considerations. The starting date represents the time at which the krugerrand was first quoted on the JSE whereas the closing date represents the final date for which data were available on the UCT computer.

Two different efficient frontiers were generated for each period and these are shown in Figures 3 - 6. The first efficient frontier is labelled SJMQ and was derived from the 45 gold shares listed in Appendix A. This frontier thus represents the efficient portfolios that were available to shareholders who wished to invest in gold shares only. The second efficient frontier is labelled KJMQ and was determined using not only the 45 gold shares but also the krugerrand. It thus indicates the advantage, if any, that will accrue to an investor who includes krugerrands in his portfolio in addition to gold shares.

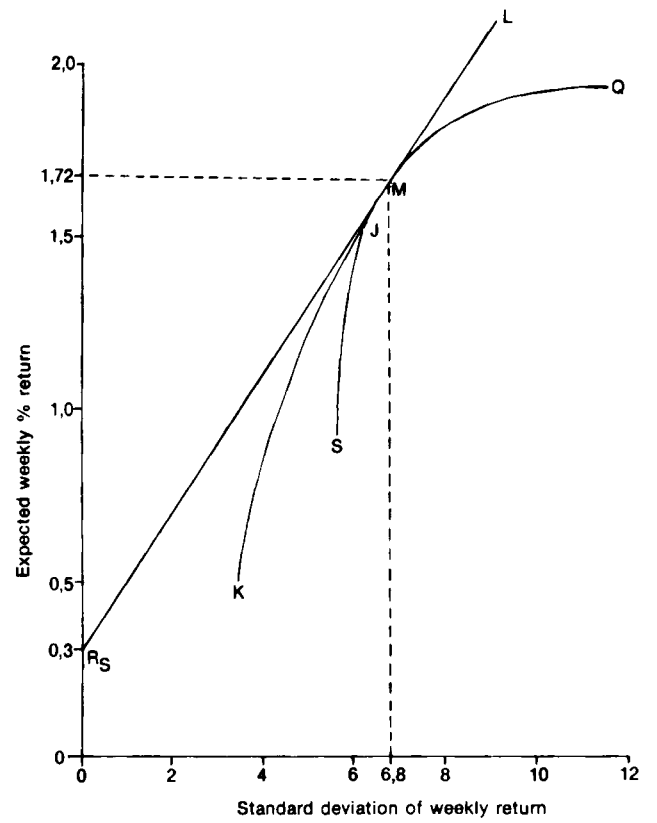
In addition to these two efficient frontiers, Figures 3 - 6 also indicate the capital market line for each year. This line is drawn tangent to the efficient frontier from a point on the return axis equal to the risk-free rate. It represents the efficient frontier for an investor who would have chosen his portfolio from the 45 gold shares considered in this study, the krugerrand, and treasury bills (assumed to be the risk-free asset for this study). As mentioned previously the capital market line is a straight line and is indicated by  $R_SML$  in Figures 3 - 6.

### Composition of efficient portfolios

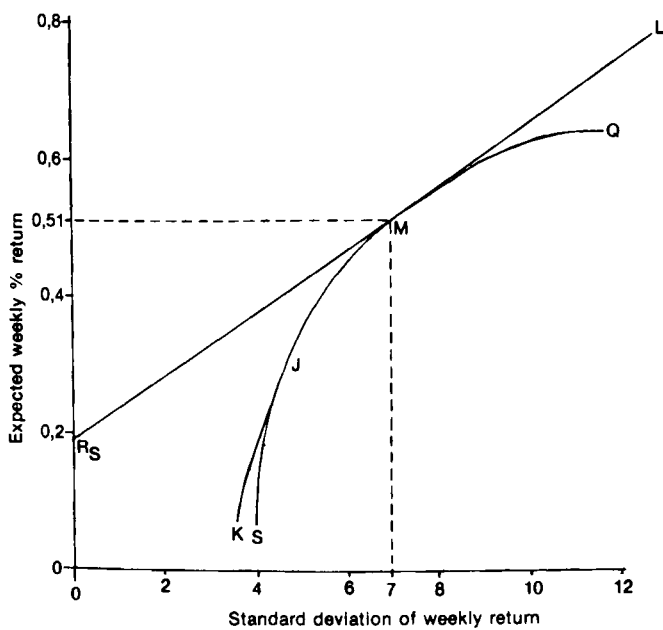
Examination of Figures 3 - 6 indicates that the range and shape of the efficient set is markedly different in each period.



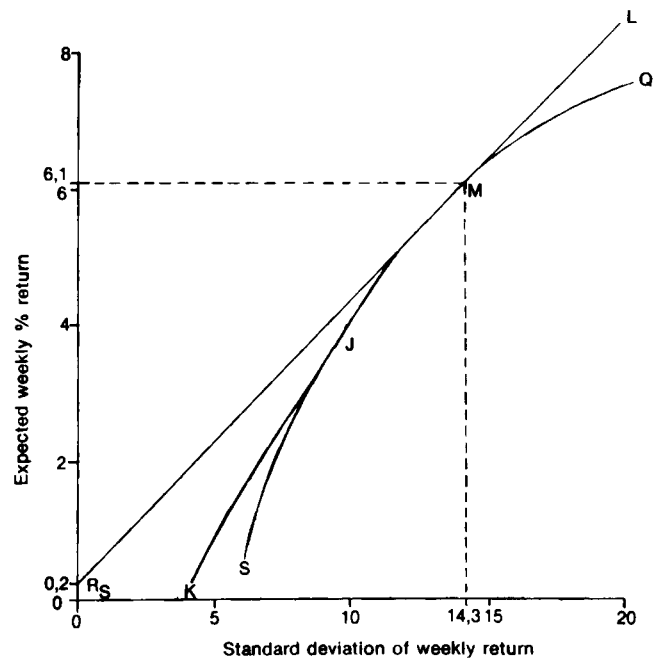
**Figure 3** Efficient portfolios of SA gold shares and 1 oz krugerrand. Investment period: 23 May 1980 - 24 December 1980 (32 weeks)



**Figure 5** Efficient portfolios of SA gold shares and 1 oz krugerrand. Investment period: 8 January 1982 - 20 December 1982 (51 weeks)



**Figure 4** Efficient portfolios of SA gold shares and 1 oz krugerrand. Investment period: 8 January 1981 - 18 December 1981 (49 weeks)



**Figure 6** Efficient portfolios of SA gold shares and 1 oz krugerrand. Investment period: 4 January 1983 - 12 April 1983 (14 weeks)

This confirms the findings of Carter, Affleck-Graves & Money (1982) in their study of all sectors of the JSE. Because of the difference in the efficient frontiers it is interesting to examine the composition of some of these efficient portfolios in each year.

Portfolios at different risk levels on the efficient frontier for each of the periods under consideration are listed in Tables 2 - 5. These portfolios were chosen from the gold share and

krugerrand curve, KJMQ, and the portfolio indicated with a double asterisk (\*\*) represents portfolio M in Figures 3 - 6.

Several points emerge from a study of these tables, the most important of which are summarized below.

- (i) At very high risk, high return shares dominate and hence limited diversification occurs.
- (ii) As one reduces risk by moving down the efficient frontier, diversification increases. However, this diversification is not as widespread as one might have anticipated with

**Table 2** Efficient portfolios for period 23 May 1980 – 24 December 1980

Securities	Efficient portfolios												
	1	2	3	4**	5	6	KR EXCL	7	KR EXCL	8	KR EXCL	9	KR EXCL
E R P M									1,6		1,8		
Marvle			2,5	4,7	6,4	5,8	3,1	5,0					
Rndftn							4,3	4,0	6,5	6,7	6,6	7,0	
Simers		14,0	9,2	7,4	3,6	2,4	1,3						
Vlaks									3,5		3,6		
Braken											0,2		
So Vaal	100,00	32,8	19,1	12,7									
Stlftn		40,5	56,7	60,4	66,2	58,2	62,7	46,3	51,8	23,8	51,3	22,8	
Zndpan							6,3		16,6		16,8		
Welkom			7,0	6,7	3,4								
W Holds							5,2		7,0		7,0		
Blyvor				4,6	14,7	11,0	18,0	3,1	13,2		13,0		
Doorns		12,7	3,5										
Dries			2,0	3,4	5,6	6,0		3,7	1,7			1,6	
K Rand						16,5		38,3		68,0		69,1	
Expected return (% per week)	2,96	2,55	2,34	2,18	2,06	1,82	1,99	1,50	1,92	1,07	1,89	1,06	
Standard deviation	7,04	4,72	4,14	3,64	3,54	3,17	3,45	2,78	3,42	2,53	3,41	2,53	

\*\*Market portfolio (risk-free SA treasury bill introduced)

**Table 3** Efficient portfolios for the period 9 January 1981 – 18 December 1981

Securities	Efficient portfolios												
	1	2**	3	4	5	6	KR EXCL	7	KR EXCL	8	KR EXCL	9	KR EXCL
E T Cons		60,9	67,3	23,4	0,1								
Simers												2,9	
Winkel				47,3	30,0	29,4	23,0		18,0		12,1		
Val Rfs					39,7	39,4	48,3		53,2		55,3		
Unisel			2,2										
Dries									2,0		4,0		
Kloof				9,6	20,7	20,5	21,6		21,4		21,9		
E Dagga	100,00	39,1	30,5	19,6	9,6	9,4	7,0		5,4		4,0		
K Rand						1,3							
Expected return (% per week)	0,63	0,51	0,49	0,34	0,16	0,15	0,14		0,12		0,07		
Standard deviation	11,7	7,0	6,44	4,98	4,17	4,14	4,11		4,08		4,04		

\*\*Market portfolio (risk-free SA treasury bill introduced)

- a maximum of seven out of the 45 securities considered being held in any one portfolio. This is, of course, in accordance with modern portfolio theory (Wagner & Lau, 1971).
- (iii) No one group of securities dominates. That is, neither the marginal mines nor the long-life mines dominate. Neither does any one JSE sector (geographic location) dominate. In fact, the selection in the various portfolios appears to be somewhat random.
  - (iv) Krugerrands do not appear in any of the high risk portfolios, as might be expected. However, they do feature fairly strongly in the lower risk portfolios with more than 60% of the available funds being allocated to krugerrands in the lowest risk portfolio for three of the four periods examined.
  - (v) Once investment in treasury bills (or some other relatively risk-free asset) is included only portfolio M (\*\*\*) is of importance, that is, the point of tangency between the CML and the efficient frontier. Examination of

Tables 2–5 shows that for all four periods, portfolio M does not include any krugerrands whatsoever. This can also be seen from Figures 3–6 where it is clear that the junction of the efficient frontiers (one with and one without the krugerrand) at point J occurs below point M in all four periods. The conclusion is clear. In each of the four periods an investor could have earned more return by limiting his investment to a combination of treasury bills and gold shares rather than a combination of gold shares, treasury bills, and the krugerrand. What is more, he could have earned the additional return without increasing his risk.

Therefore, any investor who requires less risk than that offered by portfolio M would be best advised to purchase a combination of treasury bills and portfolio M. An investor who wishes to earn a higher return than that offered by portfolio M would, if unable to borrow, choose one of the portfolios between M and Q. In either case, it is clear that krugerrands will not be included in the optimal choice.

**Table 4** Efficient portfolios for period 8 January 1982 – 20 December 1982

Securities	Efficient portfolios												
	1	2	3	4**	5	6	KR EXCL	7	KR EXCL	8	KR EXCL	9	KR EXCL
Dbn Dp			9,7	7,0									
Ergo													2,6
Randfnt		80,9	37,5	25,1		14,8		10,8					13,1
Simers				8,8	19,7	5,9	16,3	4,7	14,2				
Winkel					16,1		32,3		36,8				38,9
So Vaal			30,3	43,5	38,7	24,3	13,8	15,8	3,4				
Val Rfs					11,4		16,8		12,4				6,5
P Brand									0,3				
Unisel							0,4		1,9				2,0
W Holds									5,7				9,6
Blyvor					1,4								
Deelkrl					12,6		18,1		18,7				18,5
Elands				2,8		3,1		2,6		3,2			
Libnon			22,5	13,0		7,9		3,8					
Ventrs	100,00	10,4											
Rd Leas							2,3		6,4	96,8			8,8
K Rand						44,0		62,3					
Expected return (% per week)	1,94	1,89	1,77	1,72	1,31	1,15	1,14	0,93	1,00	0,51			0,93
Standard deviation	11,54	8,08	7,06	6,8	5,92	4,94	5,74	4,30	5,68	3,4			5,67

\*\*Market portfolio (risk free SA treasury bill introduced)

**Table 5** Efficient portfolios for period 4 January 1983 – 12 April 1983

Securities	Efficient portfolios												
	1	2	3	4**	5	6	KR EXCL	7	KR EXCL	8	KR EXCL	9	KR EXCL
Simers			8,6	13,3	20,0	8,1	1,6	4,9		2,0			1,4
Village				4,1	10,0		10,3		8,7				
W R Cons		62,0	44,4	39,2	32,0	10,2		6,2		2,7			
So Vaal							25,9		32,4				
Zndpan							59,7		58,9	7,8			9,8
E Dagga	100,00	38,1	29,9	27,3	23,5	7,6	2,6	4,3		2,5			1,2
Rd Leas			17,1	16,1	14,8	6,1		3,3					
K Rand						68,0		81,3		85,0			88
Expected return (% per week)	7,52	7,27	6,48	6,1	5,56	1,76	1,15	0,96	0,89	0,4			0,11
Standard deviation	20,62	17,01	15,33	14,3	13,56	6,73	6,66	5,39	6,36	4,52			4,09

\*\*Market portfolio (risk free SA treasury bill introduced)

### Ex-post vs ex-ante arguments

One possible drawback of the above results is that the study was performed on an *ex-post* basis whereas in practice investors must act *ex-ante*; that is, they must use estimates of the expected return and risk for each security for the coming period. Nevertheless, we believe that *ex-post* studies are of value in that they demonstrate the investment opportunities that were actually available in the period. Any consistent results which appear would indicate areas in which investors appear to be making systematic error. This should obviously be of interest to all investors although they must ask themselves whether or not the situation is likely to continue.

In the case of the krugerrand vs gold shares debate, however, an attempt can be made to examine the *ex-ante* question in addition to the *ex-post* analysis above. From an *ex-ante* position, the efficient market hypothesis (EMH) (Fama, 1970) implies that the investor can do no better than to buy 'the market'. As far as the market in gold shares is concerned,

the JSE Actuaries All Gold Index can be used as a surrogate. Therefore, to examine the *ex-ante* situation, the performance of a gold investor who bought the market (i.e. the All Gold Index) can be contrasted with the performance of an investor who divided his funds between the krugerrand and the gold index. This was done using the Markowitz approach described earlier and the results are shown in Figures 7–9.

It is important to note that the curves KMQ in Figures 7–9 represent the efficient frontier for an investor faced with only two alternatives — the gold index and/or the krugerrand. Also, because both the krugerrand and the gold share index resulted in losses in 1981 an *ex-ante* analysis is meaningless and has therefore been excluded. Figure 10 which indicates the situation for the entire period has been included instead. Finally, note that the capital market line has also been included which indicates the opportunities available to an investor who was faced with three alternatives; the krugerrand, the gold

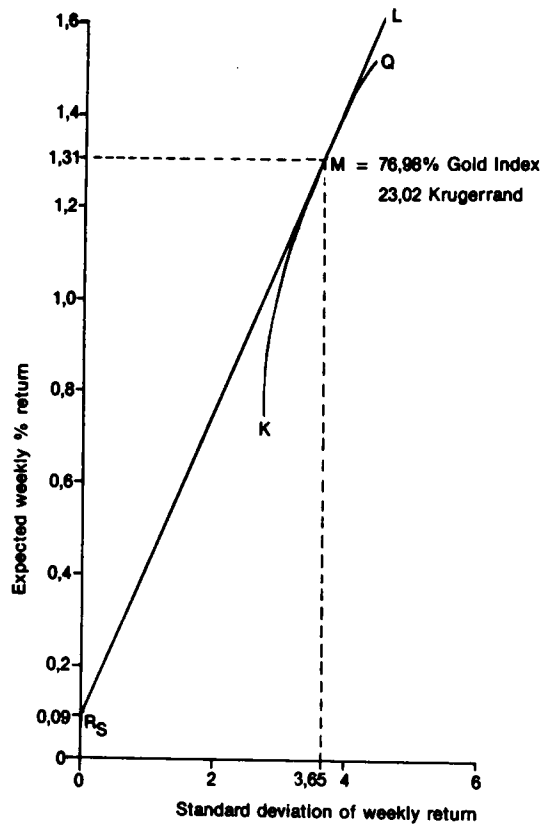


Figure 7 Efficient portfolio curve of gold index and 1 oz krugerrand. Investment period: 23 May 1980 – 24 December 1980 (32 weeks)

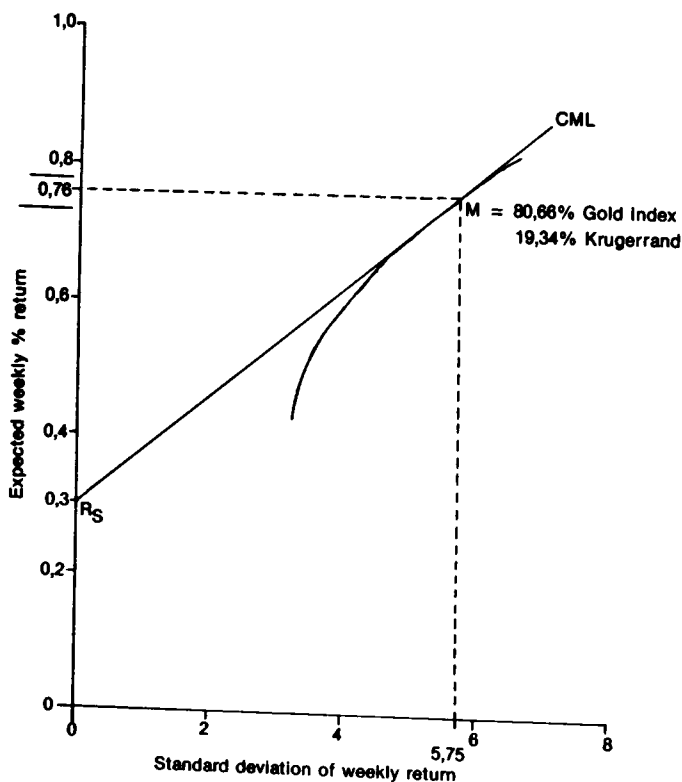


Figure 8 Efficient portfolio curve of gold index and 1 oz krugerrand. Investment period: 8 January 1982 – 20 December 1982 (51 weeks)

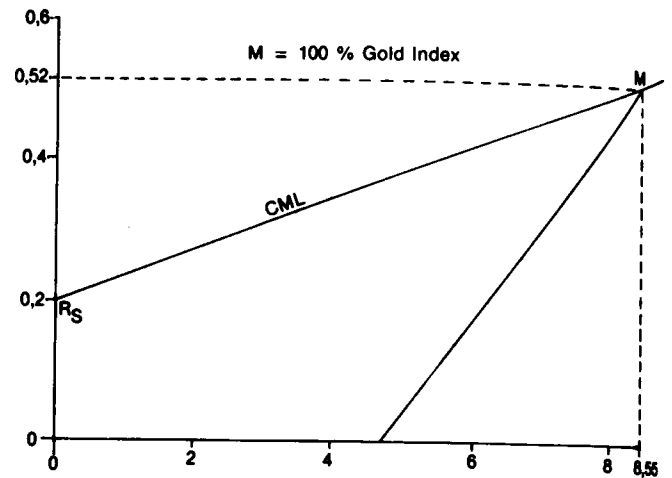


Figure 9 Efficient portfolio curve of gold index and 1 oz krugerrand. Investment period: 4 January 1983 – 12 April 1983 (14 weeks)

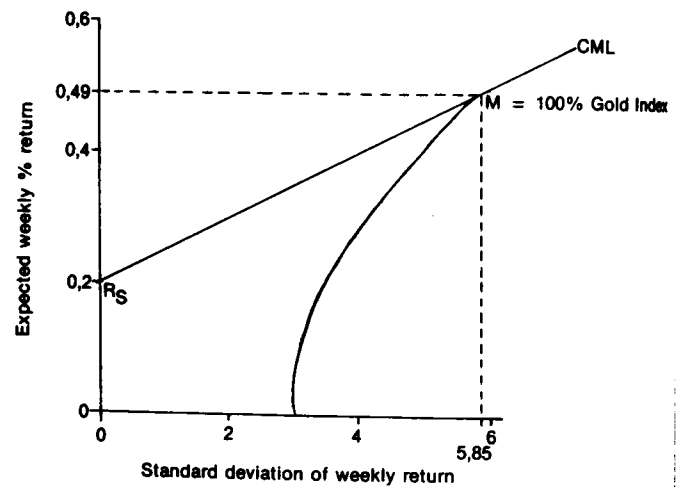


Figure 10 Efficient portfolio curve of gold index and 1 oz krugerrand. Investment period: 23 May 1980 – 12 April 1983 (147 weeks)

Table 6 Composition of Portfolio M for different periods.

Period	% in gold share index	% in krugerrand
23.05.80 – 24.12.80	77	23
08.01.82 – 20.12.82	81	19
04.01.83 – 12.04.83	100	–
23.05.80 – 12.04.83	100	–

**Conclusion**

The overall conclusion one can draw from the above results is that relative to gold shares, the krugerrand has proved historically to be a poor investment. In general, over the period considered the krugerrand provided less return than did the gold shares on average. Moreover, this reduction in return was not compensated for by an adequate reduction in risk and in fact in the bear phase of 1981 the krugerrand price fell more than the JSE Actuaries All Gold Index. The result is that an investor who considers himself a superior analyst as regards gold shares should clearly not invest any of his funds in the krugerrand. For the naive investor the best strategy would probably be to divide his funds between a 'gold index' portfolio and treasury bills. If he did decide to invest in krugerrands the amount invested therein should be small — certainly no more than 20% of his funds

share index and treasury bills. The results indicated by Figures 7–10 are summarized in Table 6.

The results clearly show that at best limited investments should be made in the krugerrand. In fact, no more than 20% of funds available for investment in gold-related investments should be allocated to the krugerrand, probably even less.

## References

- Carter, K.J., Affleck-Graves, J.F. & Money, A.H. 1982. Unit Trusts and Portfolio Selection on the Johannesburg Stock Exchange. *S. Afr. J. Bus. Mgmt.*, vol 13, 169–175.
- Fama, E.F. 1970. Efficient Capital Markets: A Review of Theory and Empirical Work. *J. Fin.*, vol. 25, 383–417.
- Markowitz, H.M. 1952. Portfolio Selection. *J. Fin.*, vol. 7, 77–91.
- Sharpe, W.F. 1964. Capital Asset Prices: A Theory of Market Equilibrium under Condition of Risk. *J. Fin.*, vol.19, 425–442.
- Wagner, W.H. & Lau, S.C. 1971. The Effect of Diversification on Risk. *Fin. Anal. J.*, vol. 25, 7–13.

## Appendix A

1. Durban Roodepoort Deep Ltd
2. East Rand Proprietary Mines Ltd
3. East Rand Gold and Uranium CO Ltd
4. Eastern Transvaal Consolidated Mines Ltd
5. The Grootvlei Proprietary Mines Ltd
6. Marievale Consolidated Mines Ltd
7. Consolidated Modderfontein Mines Ltd
8. The Randfontein Estates Gold Mining Co, Witwatersrand Ltd
9. South African Land and Exploration Co Ltd
10. Simmer and Jack Mines Ltd
11. Village Main Reef Gold Mining Co (1934) Ltd
12. Vlakfontein Gold Mining Co Ltd
13. West Rand Consolidated Mines Ltd
14. Witwatersrand Nigel Ltd
15. Bracken — Bracken Mines Ltd
16. Kinross — Kinross Mines Ltd
17. Leslie — Leslie Gold Mines Ltd
18. Winkels — Windelhaak Mines Ltd
19. Af Lease — The Afrikander Lease Ltd
20. Buffels — Buffelsfontein Gold Mining Co Ltd
21. Harties — Hartebeesfontein Gold Mining Co Ltd
22. Sovaal — Southvall Holdings Ltd
23. Stilfont — Stilfontein Gold Mining Co Ltd
24. Vaal Reefs Exploration and Mining Co Ltd
25. Zandpan Gold Mining Co Ltd
26. Free State Geduld Mines Ltd
27. Harmony Gold Mining Co Ltd
28. Loraine Gold Mines Ltd
29. President Brand Gold Mining Co Ltd
30. President Steyn Gold Mining Co Ltd
31. St Helena Gold Mining Company Ltd
32. Unisel Gold Mines Ltd
33. Welkom Gold Mining Co Ltd
34. Western Holdings Ltd
35. Blyvooruitzicht Gold Mining Co Ltd
36. Deelkraal Gold Mining Co Ltd
37. Doornfontein Gold Mining Co Ltd
38. Driefontein Consolidated Ltd
39. Elandsrand Gold Mining Co Ltd
40. Elsburg Gold Mining Co Ltd
41. Kloof Gold Mining Co Ltd
42. Libanon Gold Mining Co Ltd
43. Venterspost Gold Mining Co Ltd
44. Western Areas Gold Mining Co Ltd
45. Western Deep Levels Ltd