

Oh, Joonseok

Article — Published Version

THE PROPAGATION OF UNCERTAINTY SHOCKS: ROTEMBERG VERSUS CALVO

International Economic Review

Provided in Cooperation with:

John Wiley & Sons

Suggested Citation: Oh, Joonseok (2020) : THE PROPAGATION OF UNCERTAINTY SHOCKS: ROTEMBERG VERSUS CALVO, International Economic Review, ISSN 1468-2354, Wiley, Hoboken, NJ, Vol. 61, Iss. 3, pp. 1097-1113,
<https://doi.org/10.1111/iere.12450>

This Version is available at:

<https://hdl.handle.net/10419/230109>

Standard-Nutzungsbedingungen:

Die Dokumente auf EconStor dürfen zu eigenen wissenschaftlichen Zwecken und zum Privatgebrauch gespeichert und kopiert werden.

Sie dürfen die Dokumente nicht für öffentliche oder kommerzielle Zwecke vervielfältigen, öffentlich ausstellen, öffentlich zugänglich machen, vertreiben oder anderweitig nutzen.

Sofern die Verfasser die Dokumente unter Open-Content-Lizenzen (insbesondere CC-Lizenzen) zur Verfügung gestellt haben sollten, gelten abweichend von diesen Nutzungsbedingungen die in der dort genannten Lizenz gewährten Nutzungsrechte.

Terms of use:

Documents in EconStor may be saved and copied for your personal and scholarly purposes.

You are not to copy documents for public or commercial purposes, to exhibit the documents publicly, to make them publicly available on the internet, or to distribute or otherwise use the documents in public.

If the documents have been made available under an Open Content Licence (especially Creative Commons Licences), you may exercise further usage rights as specified in the indicated licence.



<http://creativecommons.org/licenses/by/4.0/>

THE PROPAGATION OF UNCERTAINTY SHOCKS: ROTEMBERG VERSUS CALVO*

BY JOONSEOK OH¹

Freie Universität Berlin, Germany

This article studies the effects of uncertainty shocks on economic activity, focusing on inflation. Using a vector autoregression, I show that increased uncertainty has negative demand effects, reducing GDP and prices. I then consider standard New Keynesian models with Rotemberg-type and Calvo-type price rigidities. Despite the belief that the two schemes are equivalent, I show that they generate different dynamics in response to uncertainty shocks. In the Rotemberg model, uncertainty shocks decrease output and inflation, in line with the empirical results. By contrast, in the Calvo model, uncertainty shocks decrease output but raise inflation because of firms' precautionary pricing motive.

1. INTRODUCTION

Recently, uncertainty has received substantial attention in the wake of the Great Recession and the subsequent slow recovery. Many researchers have argued that uncertainty is an important factor in determining business cycle fluctuations. In a New Keynesian framework, increased uncertainty leads to a decrease in aggregate demand because of precautionary saving motives and time-varying markups. Although the impact of uncertainty on aggregate demand is well understood, the effects on inflation have not been yet explored in the literature.

In this article, I study how increased uncertainty affects economic activity, concentrating in particular on inflation. First, I conduct a structural vector autoregression (VAR) analysis on quarterly U.S. macroeconomic data. I consider eight widely cited U.S. uncertainty measures from the literature. These eight measures can be categorized into four groups: (i) macroeconomic uncertainty, (ii) financial uncertainty, (iii) survey-based uncertainty, and (iv) policy uncertainty. The VAR analysis shows that an exogenous increase in any of these uncertainty indices results in significant falls in output and prices. In other words, uncertainty shocks act in the same way as aggregate demand shocks.

To explain these empirical findings, I compare two standard New Keynesian models with the most common sticky price assumptions: the Rotemberg (1982)-type quadratic price adjustment cost and the Calvo (1983)-type constant price adjustment probability. In the Rotemberg model, a firm can adjust its price whenever it wants after paying a quadratic adjustment cost. On the

*Manuscript received October 2017; revised December 2019.

¹ I cannot find enough words to thank my advisors Evi Pappa and Axelle Ferriere for their continuous guidance and support. I particularly benefit from the detailed comments of the editor Jesús Fernández-Villaverde and two anonymous referees. I am also indebted to Árpád Ábrahám, Pablo Anaya, Guido Ascari, Christian Bayer, Dario Bonciani, Christine Braun, Flora Budianto, Jesús Bueren, Yongsung Chang, Daeha Cho, Sunghun Cho, Jaedo Choi, Charles Denny, Juan Dolado, Denis Gorea, Michael Haliassos, Yujung Hwang, Byeong-hyeon Jeong, ShinHyuck Kang, Kwang Hwan Kim, Minki Kim, Mira Kim, Sun-Bin Kim, Changsu Ko, Luisa Lambertini, Francesca Loria, Karol Mazur, Johannes Pfeifer, Christian Pröbsting, Anna Rogantini Picco, Matthias Schmidtblaicher, Yongseok Shin, Chima Simpson-Bell, Hyuk Son, Mathias Trabandt, and Yu Wu for many insightful discussions. I thank numerous seminar participants for useful comments. All errors are my own. Please address correspondence to: Joonseok Oh, Chair of Macroeconomics, School of Business and Economics, Freie Universität Berlin, Boltzmannstrasse 20, 14195 Berlin, Germany. Phone: +49 30 838 67525. E-mail: joonseok.oh@fu-berlin.de.

other hand, in the Calvo model, each firm may reset its price only with a constant probability each period, independent of the time elapsed since the last adjustment. Although the two assumptions have different economic intuitions, the predictions of the New Keynesian model are robust against the pricing assumption up to a first-order approximation around a zero-inflation steady state. For this reason, there is a widespread agreement in the literature that the pricing assumption is innocuous for the dynamics of the standard New Keynesian model. However, by employing a third-order perturbation, I show that the Rotemberg and Calvo models generate very different results in response to uncertainty shocks. In particular, I separately consider five different sources of uncertainty shocks in the models: (i) preference uncertainty, (ii) productivity uncertainty, (iii) markup uncertainty, (iv) government spending uncertainty, and (v) interest rate uncertainty. In all cases, increased uncertainty leads to a *decrease* in inflation in the Rotemberg model, and to an *increase* in inflation in the Calvo model, while still resulting in a decrease in output in both models. This result is important because inflation stabilization is one of the main goals of monetary policy. For this reason, it is important to understand which propagation mechanism holds in the data.

Uncertainty shocks have two effects on firms: an aggregate demand effect and a precautionary pricing effect, as pointed out by Fernández-Villaverde et al. (2015). Increased uncertainty induces risk-averse households to consume less. The fall in aggregate demand lowers the demand for labor and capital, which decreases firms' marginal costs. In the Rotemberg model, only the aggregate demand effect is at work for firms. To be specific, since their pricing decision is symmetric, all firms behave as a single representative firm. Thus, the firms are risk-neutral concerning their pricing decision: the firms' marginal profit curve, a function of the reset price, is constant. Therefore, the decrease in marginal costs induces firms to lower their prices. Consequently, inflation decreases in the Rotemberg model. On the other hand, in the Calvo model, both the precautionary pricing effect as well as the aggregate demand effect are operative when an uncertainty shock hits. The Calvo pricing assumption generates heterogeneity in firms' prices. This implies that firms are risk-averse regarding their pricing decision: the firms' marginal profit curve is strictly convex. Thus, higher uncertainty induces firms that are resetting their prices to increase them so as to self-insure against being stuck with low prices in the future. If firms lower their prices, they may sell more but at negative markups, thereby incurring losses. As a result, inflation increases in the Calvo model. Using a prior predictive analysis, I show that the predictions of the two models are robust against the exact model parameterization and the different sources of uncertainty. Therefore, the Rotemberg model is more consistent with the empirical evidence than the Calvo model.

1.1. *Related Literature.* This article is related to three main strands of literature. First of all, this article contributes to the literature that studies the propagation of uncertainty shocks in New Keynesian models. This is the first article that highlights the different responses to uncertainty shocks in the Rotemberg and Calvo models. The following papers that assume the Rotemberg pricing argue that uncertainty shocks reduce output and inflation in the same way as negative demand shocks: Bonciani and van Roye (2016), Leduc and Liu (2016), Basu and Bundick (2017), Cesa-Bianchi and Fernandez-Corugedo (2018), and Katayama and Kim (2018). On the contrary, Born and Pfeifer (2014) and Mumtaz and Theodoridis (2015), which adopt Calvo pricing, argue that uncertainty shocks result in a decrease in output but an increase in inflation, that is, negative supply shocks. Exceptionally, Fernández-Villaverde et al. (2015) study an inflationary effect of uncertainty shocks in a Rotemberg-type New Keynesian model. However, this result is obtained because, in contrast to the above-mentioned literature, their price adjustment cost directly affects firms' marginal costs. Basu and Bundick (2017) attribute this discrepancy to different sources of shocks and calibrations. However, I show that the primary reason for the different results found in the literature is the adopted assumption of price stickiness.

Second, this article organizes the literature that looks at the empirical impact of uncertainty shocks on inflation. Caggiano et al. (2014), Fernández-Villaverde et al. (2015), Leduc and Liu

(2016), and Basu and Bundick (2017) argue that uncertainty shocks empirically induce a decrease in inflation. On the other hand, Mumtaz and Theodoridis (2015) find an inflationary effect of uncertainty shocks, and Carriero et al. (2018) and Katayama and Kim (2018) find an insignificant response of inflation to uncertainty shocks. However, they all use different uncertainty measures and time spans. Hence, I study eight widely cited U.S. uncertainty measures and, to avoid parameter instability, I start my sample only after the beginning of Paul Volcker's mandate as the Federal Reserve Chairman. I find that any kind of uncertainty has a negative effect on inflation.

Finally, this article adds to the literature that studies the difference between the Rotemberg and Calvo models. This is the first article that compares the two models in terms of uncertainty shocks. Nisticó (2007) and Lombardo and Vestin (2008) compare the welfare implications of the two models. Ascari et al. (2011) and Ascari and Rossi (2012) investigate the differences between the two models under a positive trend inflation rate. Ascari and Rossi (2011) study the effect of a permanent disinflation in the Rotemberg and Calvo models. More recently, Boneva, Braun and Waki (2016), Richter and Throckmorton (2016), Eggertsson and Singh (2019), and Miao and Ngo (2019) investigate the differences in the predictions of the Rotemberg and Calvo models with the zero lower bound for the nominal interest rate. Sims and Wolff (2017) study the state-dependent fiscal multipliers in the two models under a Taylor rule in addition to periods where monetary policy is passive. Moreover, Born and Pfeifer (2018) discuss the mapping between Rotemberg and Calvo wage rigidities.

The remainder of the article is structured as follows: Section 2 provides the VAR-based empirical evidence. Section 3 presents the two New Keynesian models. Section 4 explains the parameterization and the solution method. Section 5 compares the quantitative results. Finally, Section 6 concludes.

2. EMPIRICAL EVIDENCE

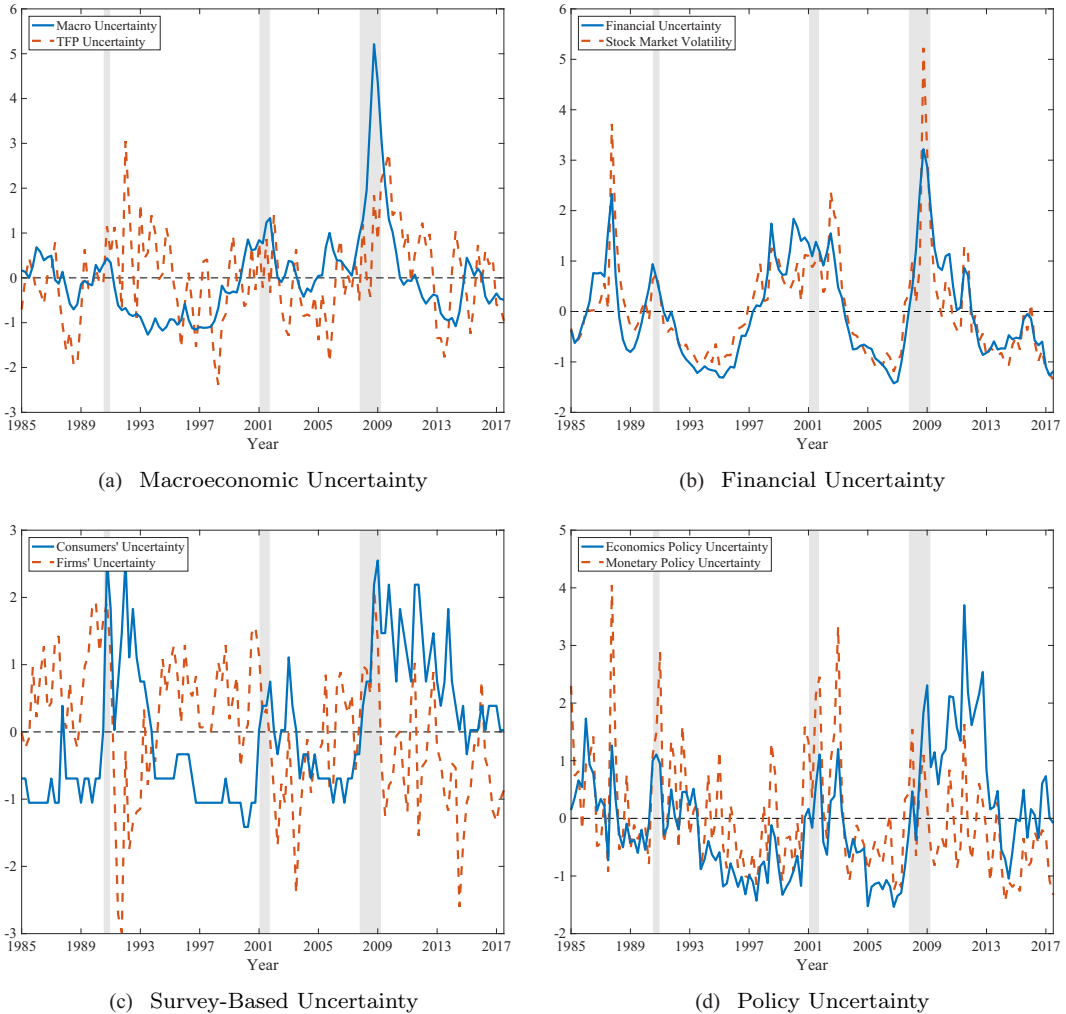
In this section, I empirically investigate the impacts of uncertainty shocks on economic activity.

2.1. Measuring Uncertainty. Measuring uncertainty is inherently difficult. Ideally, one would like to know the subjective probability distributions over future events for economic agents. As this is almost impossible to quantify directly, there exists no agreed measure of uncertainty in the literature. For my analysis, I take eight widely cited U.S. uncertainty measures from the literature similarly to Born et al. (2018). Considering this wide range of uncertainty proxies has the advantage that I am able to capture different kinds of uncertainty, such as macroeconomic uncertainty, financial uncertainty, survey-based uncertainty, and economic policy uncertainty.

Specifically, the eight uncertainty measures are (i) the macrouncertainty proxy measured by Jurado et al. (2015) and Ludvigson et al. (2019), (ii) the time-varying volatility of aggregate TFP innovations estimated by a stochastic volatility model (Born and Pfeifer, 2014; Fernald, 2014; Bloom et al., 2018), (iii) the financial uncertainty proxy estimated by Ludvigson et al. (2019), (iv) stock market volatility (VXO) studied by Bloom (2009) and Basu and Bundick (2017), (v) the consumers' perceived uncertainty proxy (concerning vehicle purchases) proposed by Leduc and Liu (2016), (vi) the firm-specific uncertainty proxy using the dispersion of firms' forecasts about the general business outlook constructed by Bachmann et al. (2013), (vii) the economic policy uncertainty index constructed by Baker et al. (2016), and (viii) the monetary policy uncertainty index constructed by Baker et al. (2016).

I present the evolution of the eight measures from 1985Q1 to 2017Q3 in Figure 1.² These eight measures can be categorized by four groups: (i) macroeconomic uncertainty, (ii) financial uncertainty, (iii) survey-based uncertainty, and (iv) policy uncertainty. Each category incorporates two indices, respectively. For comparison, each series has been demeaned and standardized. The uncertainty indices are strongly countercyclical. Most of them increase noticeably before

² The time span is determined by the availability of the monetary policy uncertainty index.



NOTE: Each series is demeaned and standardized by its standard deviation. The sample period is 1985Q1 to 2017Q3. Shaded areas mark recessions as dated by the NBER.

FIGURE 1

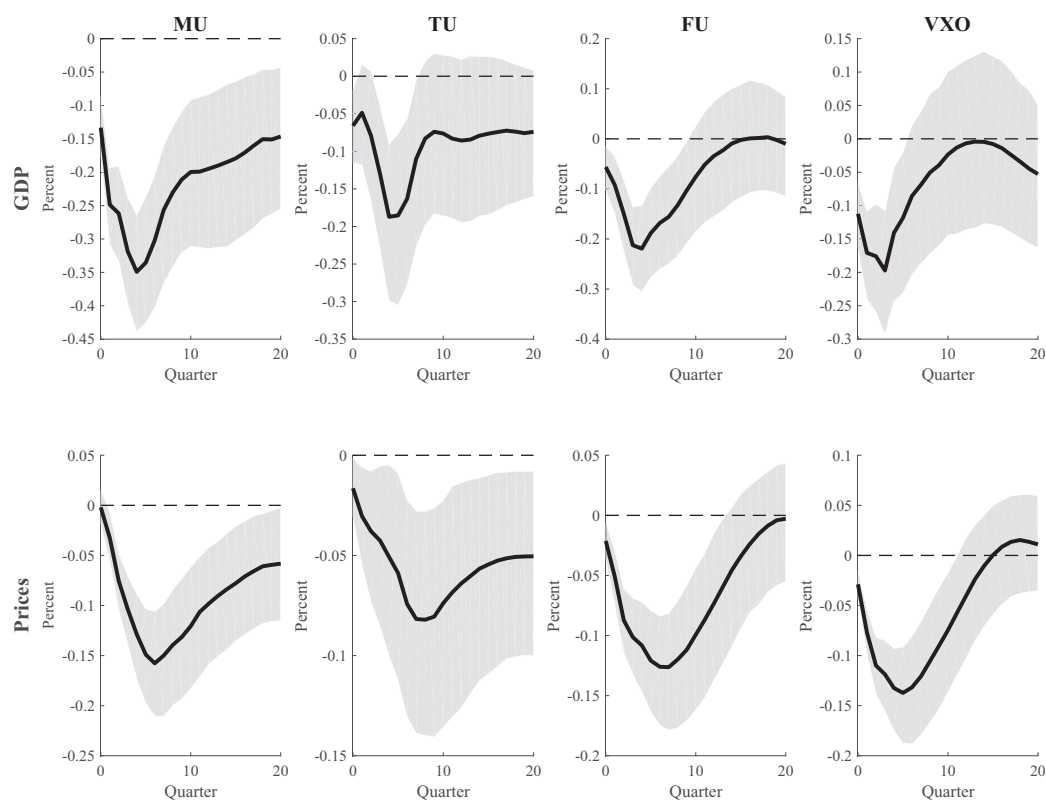
U.S. UNCERTAINTY INDICIES [COLOR FIGURE CAN BE VIEWED AT WILEYONLINELIBRARY.COM]

and during recessions, whereas they are rather low during periods of stable economic expansion. Moreover, as shown in Online Appendix A, there is generally a sizable degree of comovement between the uncertainty indices, consistent with Born et al. (2018).

2.2. VAR Analysis. Following the existing literature of Bloom (2009), Fernández-Villaverde et al. (2015), Leduc and Liu (2016), and Basu and Bundick (2017), I estimate a structural four-lag VAR model with a constant on quarterly U.S. macroeconomic data from 1985Q1 to 2017Q3:

$$(1) \quad \mathbf{A}\mathbb{Y}_t = \mathbf{c} + \sum_{j=1}^L \mathbf{B}_j \mathbb{Y}_{t-j} + \epsilon_t,$$

where ϵ_t is a vector of unobservable zero mean white noise processes. The vector \mathbb{Y}_t comprises seven variables: (i) the uncertainty measure, (ii) real GDP per capita, (iii) real consumption



NOTE: The solid lines represent median responses of the variables to a one-standard-deviation innovation to each uncertainty index. The shaded area around each solid line represents the one-standard-error bands for the estimated median impulse responses. MU, macrouncertainty; TU, TFP uncertainty; FU, financial uncertainty; VXO, stock market volatility. The sample period is 1985Q1 to 2017Q3.

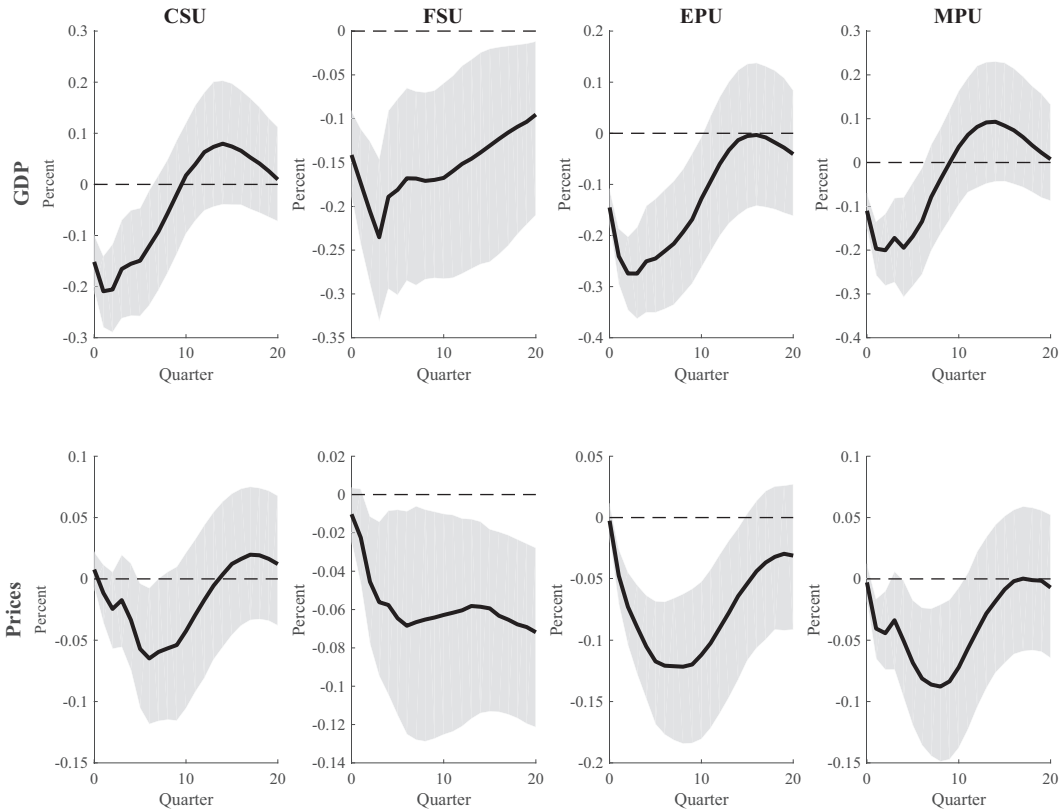
FIGURE 2

EMPIRICAL RESPONSES TO UNCERTAINTY SHOCKS: MACROECONOMIC AND FINANCIAL UNCERTAINTY MEASURES

per capita, (iv) real investment per capita, (v) hours worked per capita, (vi) the GDP deflator, and (vii) the quarterly average of the effective federal funds rate.³ Since the sample includes a period during which the federal funds rate hits the zero lower bound, I use the shadow federal funds rate constructed by Wu and Xia (2016) from 2009Q1 to 2015Q4, which is not bounded below by 0 and is supposed to summarize the stance of monetary policy. With the exception of the federal funds rate and the shadow rate, all other variables enter the VAR in log levels. To identify uncertainty shocks, I use a Cholesky decomposition with the uncertainty measure ordered first. This ordering is based on the assumption that uncertainty is not affected on impact by the other endogenous variables in the VAR.⁴ This assumption is supported by Angelini et al. (2019). They argue that uncertainty is an exogenous source of decline of economic activity.

I display the impulse responses of GDP and prices to each uncertainty shock in Figures 2 and 3.⁵ For each variable, the solid line denotes the median estimate of the impulse response

³ I use data on GDP, consumption, investment, hours worked, price, and the interest rate. My data set comes from the FRED database of St. Louis Fed. GDP is real GDP (GDPC1). Consumption is the sum of real consumptions on nondurable goods and services (PCNDGC96 and PCESVC96). Investment is the sum of real consumption on durable goods and real private fixed investment (PCDGCC96 and FPIC1). Hours worked are measured by hours of all persons in the business sector (HOABS). Price is based on the GDP deflator (GDPDEF). To convert them to per-capita terms, I use the quarterly average of the civilian noninstitutional population (CNPI6OV). The short-term interest rate



NOTE: The solid lines represent median responses of the variables to a one-standard-deviation innovation to each uncertainty index. The shaded area around each solid line represents the one-standard-error bands for the estimated median impulse responses. CSU, consumers' survey-based uncertainty; FSU, firms' survey-based uncertainty; EPU, economic policy uncertainty; MPU, monetary policy uncertainty. The sample period is 1985Q1 to 2017Q3.

FIGURE 3

EMPIRICAL RESPONSES TO UNCERTAINTY SHOCKS: SURVEY-BASED AND POLICY UNCERTAINTY MEASURES

and the shaded area represents the range of the one-standard-error bootstrapped confidence bands around the point estimates. Each uncertainty shock causes significant declines in GDP and prices. These results imply that uncertainty shocks act like aggregate demand shocks, consistently with Caggiano et al. (2014), Fernández-Villaverde et al. (2015), Leduc and Liu (2016), and Basu and Bundick (2017).

3. MODELS

In this section, I outline two standard New Keynesian models with different price setting assumptions. Both economies are populated by identical infinitely lived households. There are also a continuum of identical competitive final goods firms and a continuum of monopolistically competitive intermediate goods firms. Finally, there are fiscal and monetary authorities.

corresponds to the quarterly average of the effective federal funds rate (FEDFUNDS) and the Wu and Xia (2016)'s shadow rate.

⁴ I also check a Cholesky decomposition with the uncertainty measure ordered last. The associated impulse response functions are consistent regardless of the ordering of the uncertainty measure. I display them in Online Appendix B.2.

⁵ I display the full sets of empirical impulse response functions in Online Appendix B.1. All kinds of uncertainty shocks have similar adverse demand effects on economics activity: GDP, consumption, investment, hours worked, prices, and policy rate all decrease in response to uncertainty shocks.

3.1. *Households.* The representative household maximizes the following lifetime utility:

$$(2) \quad E_0 \sum_{t=0}^{\infty} \beta^t A_t U(C_t, N_t),$$

$$(3) \quad U(C_t, N_t) = \frac{C_t^{1-\gamma}}{1-\gamma} - \chi \frac{N_t^{1+\eta}}{1+\eta},$$

where E_0 is the conditional expectation operator, β is the subjective discount factor, C_t denotes consumption, and γ measures the degree of relative risk aversion. N_t denotes labor supply, η denotes the inverse elasticity of labor supply, and χ indicates disutility from working. A_t is an exogenous preference shock that follows a stationary AR(1) process:

$$(4) \quad \log A_t = \rho_A \log A_{t-1} + \sigma_t^A \varepsilon_t^A,$$

where $0 \leq \rho_A < 1$ and $\varepsilon_t^A \sim N(0, 1)$.

Every period, the household faces the following budget constraint:

$$(5) \quad P_t C_t + P_t I_t + \frac{B_{t+1}}{R_t} = B_t + W_t N_t + R_t^k K_t - P_t T_t + P_t \Pi_t,$$

where P_t is the price level, I_t is investment, B_t is one-period nominal bond holdings, R_t is the gross nominal interest rate, W_t is the nominal wage rate, R_t^k is the nominal rental rate of capital, K_t is capital stock, T_t is a lump-sum tax, and Π_t is profit income.

In addition, the capital stock evolves according to:

$$(6) \quad K_{t+1} = (1 - \delta)K_t + \left(1 - \frac{\kappa}{2} \left(\frac{I_t}{I_{t-1}} - 1\right)^2\right) I_t,$$

where δ is the depreciation rate and κ controls the size of adjustment costs when the level of investment changes over time, as proposed by Christiano et al. (2005).

3.2. *Final Goods Firms.* The final good Y_t is aggregated by the constant elasticity of substitution technology:

$$(7) \quad Y_t \equiv \left(\int_0^1 Y_t(i)^{\frac{\varepsilon-1}{\varepsilon}} di \right)^{\frac{\varepsilon}{\varepsilon-1}},$$

where $Y_t(i)$ is the quantity of intermediate good i used as an input and ε is the elasticity of substitution for intermediate goods. The cost minimization problem for the final goods firm implies that the demand for intermediate good i is given by:

$$(8) \quad Y_t(i) = \left(\frac{P_t(i)}{P_t} \right)^{-\varepsilon} Y_t,$$

where $P_t(i)$ is the price of intermediate good i . Finally, the zero-profit condition implies that the price index is expressed as:

$$(9) \quad P_t = \left(\int_0^1 P_t(i)^{1-\varepsilon} di \right)^{\frac{1}{1-\varepsilon}}.$$

3.3. *Intermediate Goods Firms.* There is a continuum of monopolistically competitive firms, indexed by $i \in [0, 1]$, which produce differentiated intermediate goods. Each intermediate goods firm produces its differentiated good i using the following Cobb–Douglas production function:

$$(10) \quad Y_t(i) = Z_t K_t(i)^\alpha N_t(i)^{1-\alpha} - \Phi,$$

where α denotes capital income share and Φ denotes the fixed cost of production. Z_t is an exogenous productivity shock that follows a stationary AR(1) process:

$$(11) \quad \log Z_t = \rho_Z \log Z_{t-1} + \sigma_t^Z \varepsilon_t^Z,$$

where $0 \leq \rho_Z < 1$ and $\varepsilon_t^Z \sim N(0, 1)$.

Cost minimization implies that all intermediate goods firms have the same capital-to-labor ratio and the same marginal cost:

$$(12) \quad \frac{K_t(i)}{N_t(i)} = \frac{\alpha}{1-\alpha} \frac{W_t}{R_t^k},$$

$$(13) \quad MC_t = \frac{1}{Z_t} \left(\frac{W_t}{1-\alpha} \right)^{1-\alpha} \left(\frac{R_t^k}{\alpha} \right)^\alpha.$$

3.4. *Two Price Setting Mechanisms.* To model price stickiness, I introduce Rotemberg (1982)'s and Calvo (1983)'s price setting mechanisms. Intermediate goods firms have market power and set prices to maximize their discounted profits. They face frictions in adjusting prices, and thus, prices are sticky.

3.4.1. *Rotemberg model.* Rotemberg (1982) assumes that each intermediate goods firm i faces costs of adjusting price, which are assumed to be quadratic and zero at the steady state. Therefore, firm i sets its price $P_t(i)$ to maximize profits given by:

$$(14) \quad \max_{P_{t+j}(i)} E_t \sum_{j=0}^{\infty} \Lambda_{t,t+j} \left(\left(\frac{P_{t+j}(i)}{P_{t+j}} - \frac{MC_{t+j}}{P_{t+j}} M_{t+j} \right) Y_{t+j}(i) - \frac{\phi}{2} \left(\frac{P_{t+j}(i)}{P_{t+j-1}(i)} - 1 \right)^2 Y_{t+j} \right),$$

subject to its demand in Equation (8), where $\Lambda_{t,t+j} \equiv \beta^j \frac{A_{t+j}}{A_t} \left(\frac{C_{t+j}}{C_t} \right)^{-\gamma}$ is the stochastic discount factor for real payoffs of the households, and ϕ is the adjustment cost parameter that determines the degree of nominal price rigidity. M_t is an exogenous markup shock that follows a stationary AR(1) process:

$$(15) \quad \log M_t = \rho_M \log M_{t-1} + \sigma_t^M \varepsilon_t^M,$$

where $0 \leq \rho_M < 1$ and $\varepsilon_t^M \sim N(0, 1)$.

The first-order condition associated with the optimal price is given by:

$$(16) \quad \left((1-\varepsilon) \left(\frac{P_t(i)}{P_t} \right)^{1-\varepsilon} + \varepsilon \frac{MC_t}{P_t} M_t \left(\frac{P_t(i)}{P_t} \right)^{-\varepsilon} - \phi \left(\frac{P_t(i)}{P_{t-1}(i)} - 1 \right) \frac{P_t(i)}{P_{t-1}(i)} \right) Y_t + \phi E_t \Lambda_{t,t+1} \left(\frac{P_{t+1}(i)}{P_t(i)} - 1 \right) \frac{P_{t+1}(i)}{P_t(i)} Y_{t+1} = 0.$$

Since all intermediate goods firms face an identical profit maximization problem, they choose the same price $P_t(i) = P_t$ and produce the same quantity $Y_t(i) = Y_t$. In a symmetric equilibrium, the optimal pricing rule implies:

$$(17) \quad \phi\left(\frac{P_t}{P_{t-1}} - 1\right) \frac{P_t}{P_{t-1}} = \phi E_t \Lambda_{t,t+1} \left(\frac{P_{t+1}}{P_t} - 1\right) \frac{P_{t+1}}{P_t} \frac{Y_{t+1}}{Y_t} + 1 - \varepsilon + \varepsilon \frac{MC_t}{P_t} M_t.$$

3.4.2. *Calvo model.* According to the stochastic time-dependent rule proposed by Calvo (1983) and Yun (1996), in each period, an intermediate goods firm i keeps its previous price with probability θ and resets its price with probability $1 - \theta$. The firm that gets the chance to set its price chooses its price $P_t^*(i)$ to maximize:

$$(18) \quad \max_{P_t^*(i)} E_t \sum_{j=0}^{\infty} \theta^j \Lambda_{t,t+j} \left(\frac{P_t^*(i)}{P_{t+j}} - \frac{MC_{t+j}}{P_{t+j}} M_{t+j}\right) Y_{t+j}(i),$$

subject to its demand in Equation (8).

The first-order condition with respect to the optimal price is given by:

$$(19) \quad E_t \sum_{j=0}^{\infty} \theta^j \Lambda_{t,t+j} \left((1 - \varepsilon) \left(\frac{P_t^*(i)}{P_{t+j}}\right)^{1-\varepsilon} + \varepsilon \frac{MC_{t+j}}{P_{t+j}} M_{t+j} \left(\frac{P_t^*(i)}{P_{t+j}}\right)^{-\varepsilon} \right) Y_{t+j} = 0.$$

The optimal reset price, $P_t^* = P_t^*(i)$, is the same for all firms resetting their prices in period t because they face the identical problem above. This implies that the optimal reset price is:

$$(20) \quad P_t^* = \frac{\varepsilon}{\varepsilon - 1} \frac{E_t \sum_{j=0}^{\infty} \theta^j \Lambda_{t,t+j} P_{t+j}^{\varepsilon} \frac{MC_{t+j}}{P_{t+j}} M_{t+j} Y_{t+j}}{E_t \sum_{j=0}^{\infty} \theta^j \Lambda_{t,t+j} P_{t+j}^{\varepsilon-1} Y_{t+j}}.$$

Finally, I rewrite Equation (9) describing the dynamics for the aggregate price level:

$$(21) \quad P_t = \left((1 - \theta) P_t^{*1-\varepsilon} + \theta P_{t-1}^{1-\varepsilon} \right)^{\frac{1}{1-\varepsilon}}.$$

3.5. *Fiscal and Monetary Authorities.* The fiscal authority runs a balanced budget and raises lump-sum taxes to finance government spending G_t , which is given by:

$$(22) \quad G_t = T_t.$$

The government spending G_t follows a stationary AR(1) process:

$$(23) \quad \log G_t = (1 - \rho_G) \log G + \rho_G \log G_{t-1} + \sigma_t^G \varepsilon_t^G,$$

where $0 \leq \rho_G < 1$ and $\varepsilon_t^G \sim N(0, 1)$. G is the deterministic steady-state government spending.

The monetary authority conducts monetary policy using the short-term nominal interest rate as the policy instrument. The gross nominal interest rate R_t follows a conventional Taylor rule:

$$(24) \quad \log R_t = (1 - \rho_R) \log R + \rho_R \log R_{t-1} + (1 - \rho_R) (\phi_\pi (\log \pi_t - \log \pi) + \phi_Y (\log Y_t - \log Y)) + \sigma_t^R \varepsilon_t^R,$$

where $0 \leq \rho_R < 1$, $\phi_\pi > 1$, $\phi_Y \geq 0$, and $\varepsilon_t^R \sim N(0, 1)$. $\pi_t \equiv \frac{P_t}{P_{t-1}}$ is the gross inflation rate. R , π , and Y are the deterministic steady-state values of the corresponding variables.

3.6. Market Clearing. In the Rotemberg model with the symmetric equilibrium, aggregate output satisfies:

$$(25) \quad Y_t = Z_t K_t^\alpha N_t^{1-\alpha} - \Phi,$$

and the equilibrium in the goods market requires:

$$(26) \quad Y_t = C_t + I_t + G_t + \frac{\phi}{2} \left(\frac{P_t}{P_{t-1}} - 1 \right)^2 Y_t.$$

On the other hand, in the Calvo model where the equilibrium is not symmetric, aggregate output satisfies:

$$(27) \quad \Delta_t Y_t = Z_t K_t^\alpha N_t^{1-\alpha} - \Phi,$$

where $K_t = \int K_t(i) di$ and $N_t = \int N_t(i) di$. $\Delta_t \equiv \int \left(\frac{P_t^*(i)}{P_t} \right)^{-\varepsilon} di$ is relative price dispersion and can be rewritten as the following recursive form:

$$(28) \quad \Delta_t = (1 - \theta) \left(\frac{P_t^*}{P_t} \right)^{-\varepsilon} + \theta \left(\frac{P_t}{P_{t-1}} \right)^\varepsilon \Delta_{t-1}.$$

The equilibrium in the goods market for the Calvo model is given by:

$$(29) \quad Y_t = C_t + I_t + G_t.$$

3.7. Uncertainty Shock Processes. I consider the following uncertainty shock processes:

$$(30) \quad \log \sigma_t^X = (1 - \rho_{\sigma^X}) \log \sigma^X + \rho_{\sigma^X} \log \sigma_{t-1}^X + \sigma^{\sigma^X} \varepsilon_t^{\sigma^X},$$

where $X \in \{A, Z, M, G, R\}$, $0 \leq \rho_{\sigma^X} < 1$, and $\varepsilon_t^{\sigma^X} \sim N(0, 1)$ is a second-moment uncertainty shock. An increase in the volatility of the shock process increases the uncertainty about the future time path of the stochastic process. All stochastic shocks are independent.

4. PARAMETERIZATION AND SOLUTION METHOD

The two models are parameterized to a quarterly frequency. Table 1 provides a summary of the key parameters. To make sure that the differences in the Rotemberg and Calvo models hold independent of the parameterization, I conduct a prior predictive analysis as in Pappa (2009). This exercise formalizes, via Monte Carlo methods, standard sensitivity analysis. First, I fix a zero inflation steady state ($\pi = 1$) and a zero profit steady state ($\Pi = 0$). I draw the values of the following 32 parameters uniformly: the discount factor (β), the risk aversion (γ), the inverse labor supply elasticity (η), the steady-state hours worked (N), the capital depreciation rate (δ), the investment adjustment cost parameter (κ), the elasticity of substitution between intermediate goods (ε), the capital income share (α), the Calvo price duration (θ), the steady-state government spending share ($\frac{G}{Y}$), the coefficients of the Taylor rule (ϕ_π and ϕ_Y), and the coefficients of the shock processes (ρ_X , σ^X , ρ_{σ^X} , and σ^{σ^X}). The parameters are allowed to vary over the ranges reported in Table 1. The ranges are based on theoretical and practical considerations. I impose the following three parameters to be fixed according steady-state

TABLE 1
QUARTERLY PARAMETRIZATION

Parameter	Description	Range
β	Discount factor	[0.985, 0.995]
γ	Risk aversion	[1, 4]
η	Inverse labor supply elasticity	[0.25, 2]
χ	Labor disutility parameter	$N=[0.2, 0.4]$
δ	Capital depreciation rate	[0.01, 0.04]
κ	Investment adjustment cost parameter	[0, 6]
ε	Elasticity of substitution between goods	[6, 31]
α	Capital income share	[0.2, 0.4]
Φ	Production fixed costs	$\Pi = 0$
π	Steady-state inflation	1
θ	Calvo probability of keeping price unchanged	[0.5, 0.9]
ϕ	Rotemberg price adjustment cost parameter	$\frac{\theta(\varepsilon-1)}{(1-\theta)(1-\beta\theta)}$
G	Steady-state government spending	$\frac{G}{Y} = [0.1, 0.3]$
ϕ_π	Coefficient of inflation target in the Taylor rule	[1.1, 3]
ϕ_Y	Coefficient of output target in the Taylor rule	[0, 0.5]
ρ_X	Persistence of level shocks	[0.5, 0.99]
σ^X	Volatility of level shocks	[0.005, 0.015]
ρ_{σ^X}	Persistence of uncertainty shocks	[0.5, 0.99]
σ^{σ^X}	Volatility of uncertainty shocks	[0.2, 0.8]

considerations and the first-order equivalence of the two models: the labor disutility parameter (χ), the production fixed cost (Φ), and the Rotemberg price adjustment cost parameter (ϕ).

I solve the two models using a third-order approximation to the equilibrium conditions around their respective deterministic steady states.⁶ To solve the models, I use the Dynare software package developed by Adjemian et al. (2011) and the pruning algorithm designed by Andreasen et al. (2018). Then, I repeat this procedure 10,000 times. I construct the impulse response functions of the endogenous variables to uncertainty shocks for each draw and rearrange them in ascending order.⁷ Finally, I generate pointwise 68% probability bands between the 84 and 16 percentiles in both models.

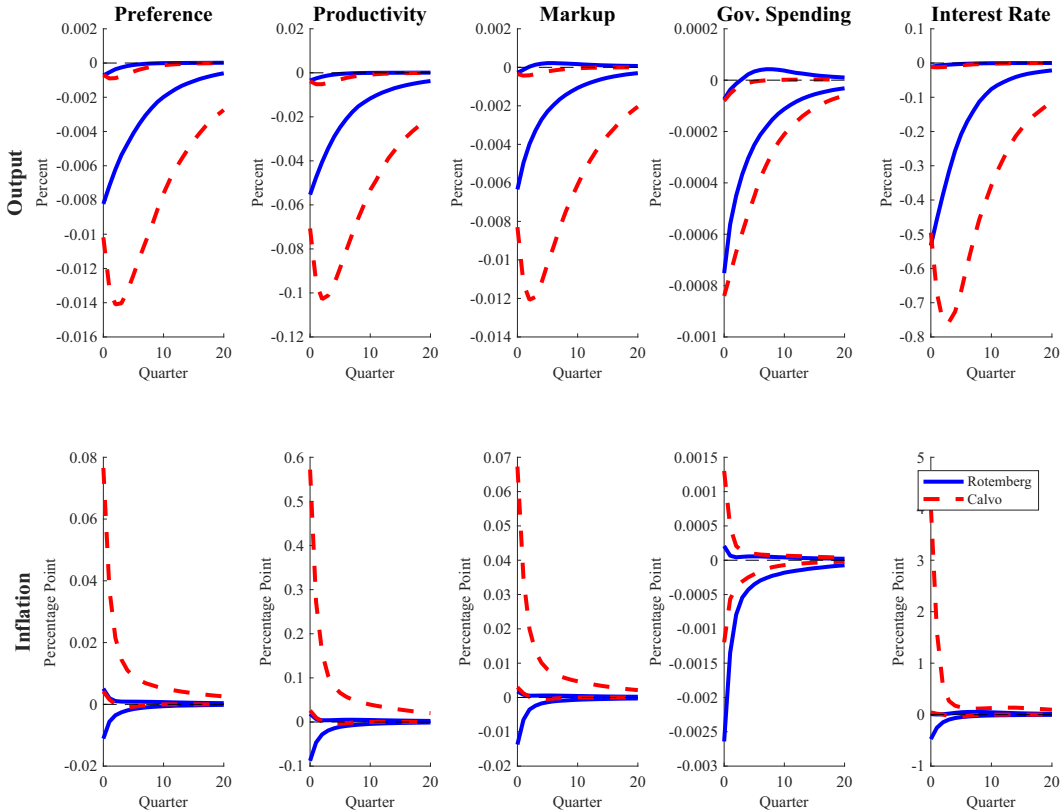
5. QUANTITATIVE RESULTS

In this section, I quantitatively investigate the effects of uncertainty shocks on macroeconomic variables in the Rotemberg and Calvo models. I plot the pointwise 68% probability bands for the impulse response functions of output and inflation to each uncertainty shock in the Rotemberg (blue solid bands) and Calvo (red dashed bands) models in Figure 4. The figure shows that increased uncertainty has negative effects on output in both models. It increases inflation in the Calvo model. On the other hand, even though the bands of inflation slightly contain the zero line in the Rotemberg model, higher inflation generally decreases in response to uncertainty shocks as compared to the Calvo model.⁸ Hence, this exercise shows that the pricing assumptions are the main reason behind the different inflation responses and that the result is robust against

⁶ Fernández-Villaverde et al. (2011) explain that in the third-order approximation, in contrast to first and second-order approximations, the innovations to the stochastic volatility shocks enter independently the approximated policy functions.

⁷ As discussed by Fernández-Villaverde et al. (2011), a third-order approximation moves the ergodic means of the endogenous variables of the model away from their deterministic steady-state values. Hence, I compute the impulse responses in percent deviation from the stochastic steady state of each endogenous variable while keeping the level of corresponding standard shocks constant.

⁸ Fasani and Rossi (2018) show that in the Rotemberg model, uncertainty shocks can have inflationary or deflationary effects depending on the monetary policy rule.



NOTE: The band of output is plotted in percent deviations from its stochastic steady state. The band of inflation is plotted in annualized percentage point deviations from its stochastic steady state.

FIGURE 4

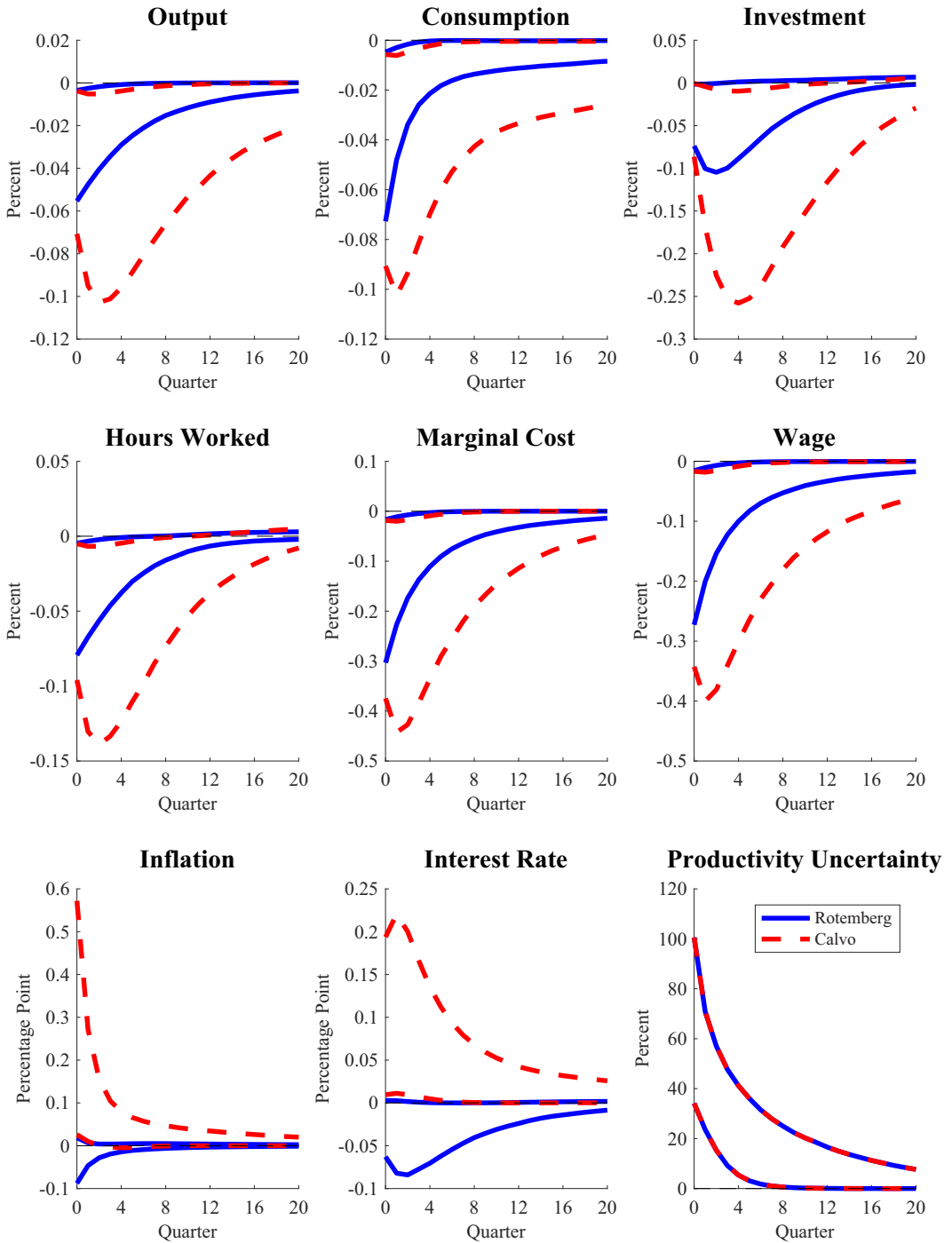
POINTWISE 68% PROBABILITY BANDS TO UNCERTAINTY SHOCKS IN ROTEMBERG AND CALVO MODELS [COLOR FIGURE CAN BE VIEWED AT WILEYONLINELIBRARY.COM]

different parameterization and sources of uncertainty. In the following subsections, I am going to explain why the effects of uncertainty shocks on inflation are different in the two models.

5.1. *Households' Precautionary Decision: Rotemberg and Calvo.* I display the pointwise 68% probability bands for the impulse response functions of the endogenous variables only to a productivity uncertainty shock in the Rotemberg (blue solid bands) and Calvo (red dashed bands) models in Figure 5. The effects of the other uncertainty shocks are qualitatively similar and are displayed in Online Appendix F.1.

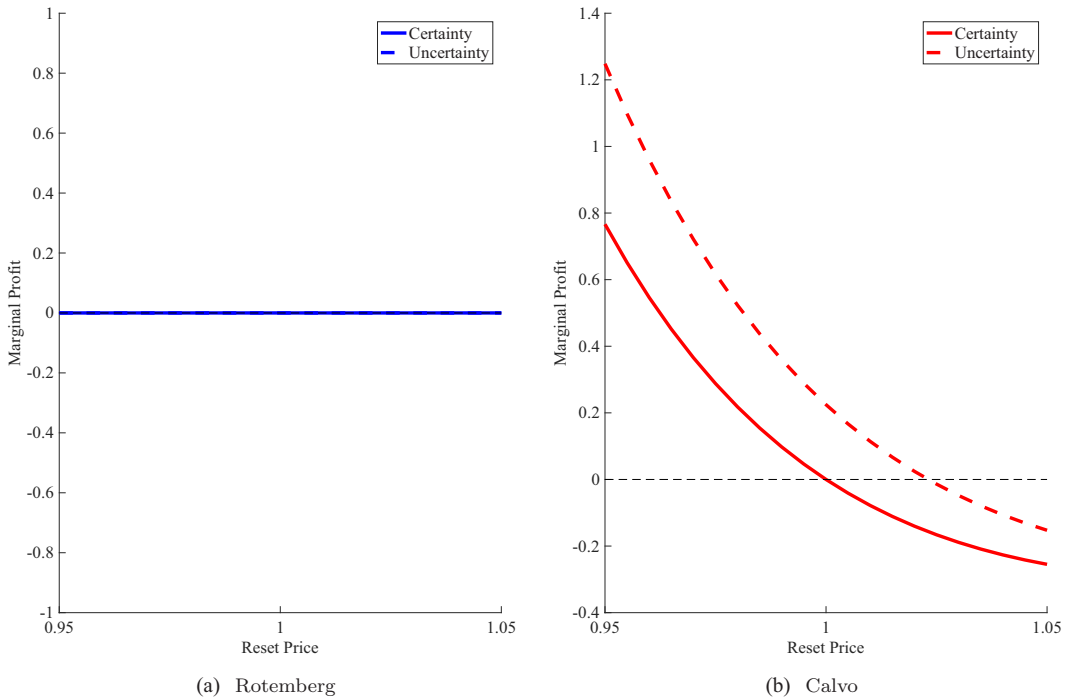
Increased uncertainty induces a precautionary saving effect on risk-averse households. This implies that when uncertainty increases, households want to consume less and save more. To save more, households would like to invest and work more. Since the fall in consumption implies a decline in aggregate demand, this decreases output. Lower output decreases the marginal products of capital and labor, thus leading to a fall in the demand for capital and labor. Consequently, this reduces the rental rates and wages, and thus decreases firms' marginal costs. To investigate the firms' pricing decision, I rewrite Equation (17) from recursive form to infinite sum form:

$$(31) \quad \left\{ E_t \sum_{j=0}^{\infty} \Lambda_{t,t+j} \left(1 - \varepsilon + \varepsilon \frac{MC_{t+j}}{P_{t+j}} M_{t+j} \right) Y_{t+j} \right\} - \phi \left(\frac{P_t}{P_{t-1}} - 1 \right) \frac{P_t}{P_{t-1}} Y_t = 0.$$



NOTE: The bands of output, consumption, investment, hours worked, real marginal cost, and real wage are plotted in percent deviations from their stochastic steady states. The bands of inflation and nominal interest rate are plotted in annualized percentage point deviations from their stochastic steady states.

FIGURE 5



NOTE: The period marginal profit is a function of the reset price.

FIGURE 6

STEADY-STATE EXPECTED PERIOD MARGINAL PROFITS IN ROTEMBERG AND CALVO MODELS [COLOR FIGURE CAN BE VIEWED AT WILEYONLINELIBRARY.COM]

Following Equation (31), when the marginal costs of the intermediate goods firms decrease, they lower their prices to stimulate the demand for output. This corresponds to a decrease in inflation. However, the prices do not decrease as much as the marginal costs due to the price adjustment costs. This implies an increase in price markups over marginal costs. Aggregate demand falls after all. Consequently, since the equilibrium is demand-determined, output, consumption, investment, and hours worked decrease. Under the Taylor rule, the monetary authority lowers the nominal interest rate to alleviate the adverse effects of uncertainty.

5.2. *Firms' Precautionary Decision: Calvo.* In addition to the aggregate demand effect of uncertainty shocks discussed above, uncertainty shocks have a further effect on firms' pricing decision in the Calvo model. Equation (20) can be rewritten as follows:

$$(32) \quad E_t \sum_{j=0}^{\infty} \theta^j \Lambda_{t,t+j} \left((1 - \varepsilon) \left(\frac{P_t^*}{P_{t+j}} \right)^{1-\varepsilon} + \varepsilon \frac{MC_{t+j}}{P_{t+j}} M_{t+j} \left(\frac{P_t^*}{P_{t+j}} \right)^{-\varepsilon} \right) Y_{t+j} = 0.$$

This implies that the associated equilibrium is not symmetric.

Similarly to Fernández-Villaverde et al. (2015) and Born and Pfeifer (2019), I explain firms' pricing decision in this model by using the steady-state period marginal profit function.⁹ Figure 6(b) displays that in the Calvo model, the marginal profit curve is strictly convex in the reset price. This feature comes from the existence of the relative price dispersion. Intuitively, this implies that firms set their prices risk-aversely like households discussed above.

⁹ I give the detailed explanation in Online Appendix D.

Figure 6(b) shows that to maximize their profits, the optimal price under uncertainty is higher than that under certainty, applying Jensen's inequality. The firms that increase their prices will sell fewer goods but at higher price markups. In contrast, the firms that lower their prices may sell more but at negative markups, thereby incurring losses. Thus, when uncertainty increases, firms increase their prices to self-insure against being stuck with low prices in the future. Therefore, price markups increase by more. This precautionary pricing decision increases inflation and decreases output. Under the Taylor rule, the monetary authority increases the nominal interest rate to stabilize the increase in inflation.

On the other hand, those profit curves have zero curvature in the Rotemberg model as shown in Figure 6(a). This implies that whatever the shocks realization is, all firms change their prices equally in the Rotemberg model.¹⁰ This means that they do not face the trade-off present in the Calvo model where being an expensive firm is preferred to being a cheap one.

In sum, due to the precautionary pricing effect, inflation increases in the Calvo model, whereas it decreases in the Rotemberg model.¹¹ Moreover, output, consumption, investment, and hours worked in the Calvo model decrease by more than those in the Rotemberg model. Thus, the Rotemberg model is qualitatively consistent with the empirical findings with respect to the transmission of uncertainty shocks. The opposite response of inflation to uncertainty shocks would prompt different monetary policy reactions. For this reason, understanding which propagation mechanism holds in the data becomes important.

6. CONCLUSION

This article contributes to our understanding of the role of different sticky price assumptions in the propagation of uncertainty shocks. An important contribution of this article is to show that in contrast to the Calvo model, the Rotemberg model does not generate a precautionary pricing effect of uncertainty shocks. For this reason, the response of inflation to uncertainty shocks is opposite in the Rotemberg and Calvo models. This result has important implications for monetary policy. Depending on the model adopted, the implied policy responses to higher uncertainty are qualitatively different.

The implications of the Rotemberg model are qualitatively more consistent with the empirical findings than those of the Calvo model. However, from a quantitative perspective, in both models, uncertainty shocks have much smaller effects on macro aggregates than those shown by the empirical evidence. To bring the theoretical models closer to the data, future research should focus on understanding the amplification channels of uncertainty shocks.

SUPPORTING INFORMATION

Additional supporting information may be found online in the Supporting Information section at the end of the article.

REFERENCES

- ADJEMIAN, S., H. BASTANI, M. JUILLARD, F. KARAMÉ, J. MAIH, F. MIHOUBI, G. PERENDIA, J. PFEIFER, M. RATTO, AND S. VILLEMOT, "Dynare: Reference Manual Version 4," Dynare Working Papers 1, CEPREMAP, 2011.
- ANDREASEN, M. M., J. FERNÁNDEZ-VILLAVARDE, AND J. RUBIO-RAMÍREZ, "The Pruned State-Space System for Non-Linear DSGE Models: Theory and Empirical Applications," *Review of Economic Studies* 85 (2018), 1–49.

¹⁰ One may argue that when capital is accumulated by the Rotemberg-type firms, this forward-looking behavior can induce a precautionary pricing behavior. However, due to a symmetric equilibrium, the capital accumulation by firms does not have any effects on their pricing behavior. In other words, those behaviors are independent from each other in the Rotemberg model. See Basu and Bundick (2017).

¹¹ To examine the robustness of my results, I conduct several robustness checks in Online Appendix E.

- ANGELINI, G., E. BACCHIOCCHI, G. CAGGIANO, AND L. FANELLI, "Uncertainty across Volatility Regimes," *Journal of Applied Econometrics* 34 (2019), 437–55.
- ASCARI, G., E. CASTELNUOVO, AND L. ROSSI, "Calvo vs. Rotemberg in a Trend Inflation World: An Empirical Investigation," *Journal of Economic Dynamics and Control* 35 (2011), 1852–67.
- , AND L. ROSSI, "Real Wage Rigidities and Disinflation Dynamics: Calvo vs. Rotemberg Pricing," *Economics Letters* 110 (2011), 126–31.
- , AND ———, "Trend Inflation and Firms Price-Setting: Rotemberg Versus Calvo," *Economic Journal* 122 (2012), 1115–41.
- BACHMANN, R., S. ELSTNER, AND E. R. SIMS, "Uncertainty and Economic Activity: Evidence from Business Survey Data," *American Economic Journal: Macroeconomics* 5 (2013), 217–49.
- BAKER, S., N. BLOOM, AND S. DAVIS, "Measuring Economic Policy Uncertainty," *Quarterly Journal of Economics* 131 (2016), 1593–636.
- BASU, S., AND B. BUNDICK, "Uncertainty Shocks in a Model of Effective Demand," *Econometrica* 85 (2017), 937–58.
- BLOOM, N., "The Impact of Uncertainty Shocks," *Econometrica* 77 (2009), 623–85.
- , M. FLOETOTTO, N. JAIMOVICH, I. SAPORTA-EKSTEN, AND S. J. TERRY, "Really Uncertain Business Cycles," *Econometrica* 86 (2018), 1031–65.
- BONCIANI, D., AND B. VAN ROYE, "Uncertainty Shocks, Banking Frictions and Economic Activity," *Journal of Economic Dynamics and Control* 73 (2016), 200–19.
- BONEVA, L. M., R. A. BRAUN, AND Y. WAKI, "Some Unpleasant Properties of Loglinearized Solutions When the Nominal Rate Is Zero," *Journal of Monetary Economics* 84 (2016), 216–32.
- BORN, B., S. BREUER, AND S. ELSTNER, "Uncertainty and the Great Recession," *Oxford Bulletin of Economics and Statistics* 80 (2018), 951–71.
- , AND J. PFEIFER, "Policy Risk and the Business Cycle," *Journal of Monetary Economics* 68 (2014), 68–85.
- , AND ———, "The New Keynesian Wage Phillips Curve: Calvo vs. Rotemberg," *Macroeconomic Dynamics* (2018), forthcoming.
- , AND ———, "Uncertainty-Driven Business Cycles: Assessing the Markup Channel," Working Paper, 2019.
- CAGGIANO, G., E. CASTELNUOVO, AND N. GROSHENNY, "Uncertainty Shocks and Unemployment Dynamics in U.S. Recessions," *Journal of Monetary Economics* 67 (2014), 78–92.
- CALVO, G., "Staggered Prices in a Utility Maximizing Framework," *Journal of Monetary Economics* 12 (1983), 383–98.
- CARRIERO, A., T. E. CLARK, AND M. MARCELLINO, "Measuring Uncertainty and Its Impact on the Economy," *Review of Economics and Statistics* 100 (2018), 799–815.
- CESA-BIANCHI, A., AND E. FERNANDEZ-CORUGEDO, "Uncertainty, Financial Frictions and Nominal Rigidities: A Quantitative Investigation," *Journal of Money, Credit and Banking* 50 (2018), 603–36.
- CHRISTIANO, L. J., M. EICHENBAUM, AND C. L. EVANS, "Nominal Rigidities and the Dynamic Effects of a Shock to Monetary Policy," *Journal of Political Economy* 113 (2005), 1–45.
- EGGERTSSON, G. B., AND S. R. SINGH, "Log-Linear Approximation versus an Exact Solution at the ZLB in the New Keynesian Model," *Journal of Economic Dynamics and Control* 105 (2019), 21–43.
- FASANI, S., AND L. ROSSI, "Are Uncertainty Shocks Aggregate Demand Shocks?," *Economics Letters* 167 (2018), 142–6.
- FERNALD, J. G., "A Quarterly, Utilization-Adjusted Series on Total Factor Productivity," FRBSF Working Paper 2012-19, 2014.
- FERNÁNDEZ-VILLAVERDE, J., P. GUERRÓN-QUINTANA, K. KUESTER, AND J. RUBIO-RAMÍREZ, "Fiscal Volatility Shocks and Economic Activity," *American Economic Review* 105 (2015), 3352–84.
- , ———, AND M. URIBE, "Risk Matters: The Real Effects of Volatility Shocks," *American Economic Review* 101 (2011), 2530–61.
- JURADO, K., S. C. LUDVIGSON, AND S. NG, "Measuring Uncertainty," *American Economic Review* 105 (2015), 1177–216.
- KATAYAMA, M., AND K. H. KIM, "Uncertainty Shocks and the Relative Price of Investment Goods," *Review of Economic Dynamics* 30 (2018), 163–78.
- LEDUC, S., AND Z. LIU, "Uncertainty Shocks Are Aggregate Demand Shocks," *Journal of Monetary Economics* 82 (2016), 20–35.
- LOMBARDO, G., AND D. VESTIN, "Welfare Implications of Calvo vs. Rotemberg-Pricing Assumptions," *Economics Letters* 100 (2008), 275–9.
- LUDVIGSON, S. C., S. MA, AND S. NG, "Uncertainty and Business Cycles: Exogenous Impulse or Endogenous Response?," *American Economic Journal: Macroeconomics* (2019), forthcoming.
- MIAO, J., AND P. V. NGO, "Does Calvo Meet Rotemberg at the Zero Lower Bound?," *Macroeconomic Dynamics* (2019), forthcoming.

- MUMTAZ, H., AND K. THEODORIDIS, "The International Transmission of Volatility Shocks: An Empirical Analysis," *Journal of the European Economic Association* 13 (2015), 512–33.
- NISTICÓ, S., "The Welfare Loss from Unstable Inflation," *Economics Letters* 96 (2007), 51–7.
- PAPPA, E., "The Effects of Fiscal Shocks on Employment and the Real Wage," *International Economic Review* 50 (2009), 217–44.
- RICHTER, A. W., AND N. A. THROCKMORTON, "Is Rotemberg Pricing Justified by Macro Data?," *Economics Letters* 149 (2016), 44–8.
- ROTEMBERG, J. J., "Sticky Prices in the United States," *Journal of Political Economy* 90 (1982), 1187–211.
- SIMS, E., AND J. WOLFF, "State-Dependent Fiscal Multipliers: Calvo vs. Rotemberg," *Economics Letters* 159 (2017), 190–4.
- WU, J. C., AND F. D. XIA, "Measuring the Macroeconomic Impact of Monetary Policy at the Zero Lower Bound," *Journal of Money, Credit and Banking* 48 (2016), 253–91.
- YUN, T., "Nominal Price Rigidity, Money Supply Endogeneity, and Business Cycles," *Journal of Monetary Economics* 37 (1996), 345–70.