

Iheonu, Chimere Okechukwu; Anyanwu, Ogochukwu C.; Odo, Obinna K.; Nathaniel, Solomon Prince

Working Paper

Does economic growth, international trade and urbanization uphold environmental sustainability in sub-Saharan Africa? Insights from quantile and causality procedures

AGDI Working Paper, No. WP/21/003

Provided in Cooperation with:

African Governance and Development Institute (AGDI), Yaoundé, Cameroon

Suggested Citation: Iheonu, Chimere Okechukwu; Anyanwu, Ogochukwu C.; Odo, Obinna K.; Nathaniel, Solomon Prince (2021) : Does economic growth, international trade and urbanization uphold environmental sustainability in sub-Saharan Africa? Insights from quantile and causality procedures, AGDI Working Paper, No. WP/21/003, African Governance and Development Institute (AGDI), Yaoundé

This Version is available at:

<https://hdl.handle.net/10419/244178>

Standard-Nutzungsbedingungen:

Die Dokumente auf EconStor dürfen zu eigenen wissenschaftlichen Zwecken und zum Privatgebrauch gespeichert und kopiert werden.

Sie dürfen die Dokumente nicht für öffentliche oder kommerzielle Zwecke vervielfältigen, öffentlich ausstellen, öffentlich zugänglich machen, vertreiben oder anderweitig nutzen.

Sofern die Verfasser die Dokumente unter Open-Content-Lizenzen (insbesondere CC-Lizenzen) zur Verfügung gestellt haben sollten, gelten abweichend von diesen Nutzungsbedingungen die in der dort genannten Lizenz gewährten Nutzungsrechte.

Terms of use:

Documents in EconStor may be saved and copied for your personal and scholarly purposes.

You are not to copy documents for public or commercial purposes, to exhibit the documents publicly, to make them publicly available on the internet, or to distribute or otherwise use the documents in public.

If the documents have been made available under an Open Content Licence (especially Creative Commons Licences), you may exercise further usage rights as specified in the indicated licence.

A G D I Working Paper

WP/21/003

Does Economic Growth, International Trade and Urbanization uphold Environmental Sustainability in sub-Saharan Africa? Insights from Quantile and Causality Procedures

Forthcoming: Environmental Science and Pollution Research

Chimere O. Iheonu

Centre for the Study of the Economies of Africa, Abuja, Nigeria
E-mail: iheonuchimere@yahoo.com

Ogochukwu C. Anyanwu

Department of Economics,
University of Nigeria, Nsukka, Nigeria
E-mail: ogochukwu.anyanwu@unn.edu.ng

Obinna K. Odo

Department of Economics,
University of Nigeria, Nsukka, Nigeria
E-mail: obinnakingsley35@yahoo.com

Solomon Prince Nathaniel

University of Lagos, Akoka, Nigeria.
Lagos State University, School of Foundation, Badagry, Nigeria.
E-mail: nathaniel_solomon21@yahoo.com

Research Department

Does Economic Growth, International Trade and Urbanization uphold Environmental Sustainability in sub-Saharan Africa? Insights from Quantile and Causality Procedures**Chimere O. Iheonu, Ogochukwu C. Anyanwu, Obinna K. Odo & Solomon Prince Nathaniel**

January 2021

Abstract

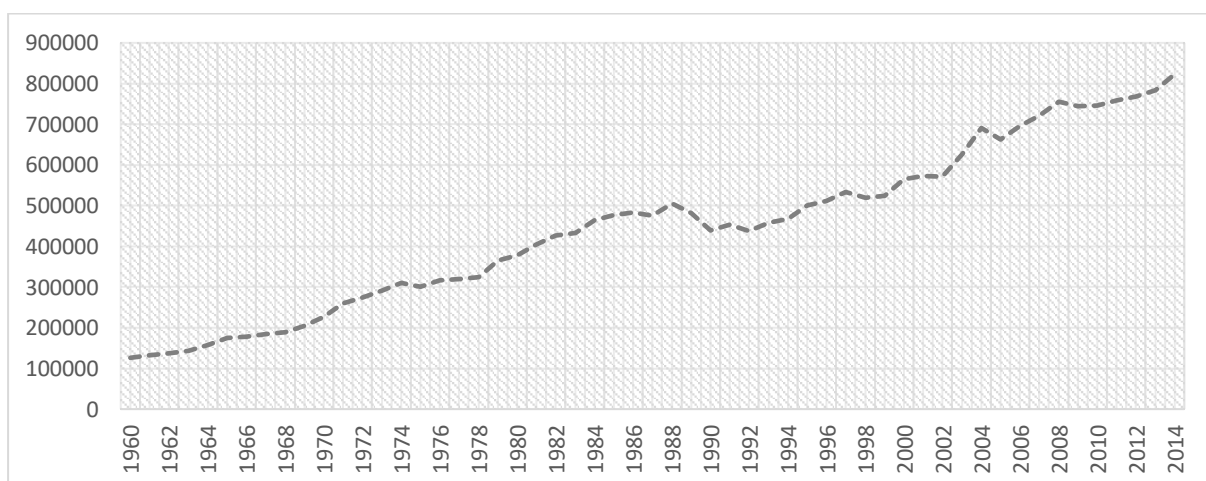
International trade and urbanization are increasing at an unprecedented rate in sub-Saharan Africa (SSA). The region has also witnessed a fair share of economic growth, with minimal investment and consumption of renewables. Therefore, this study investigates the influence of economic growth, international trade, and urbanization on CO₂ emissions in SSA. The current study enriches the existing literature by employing the panel quantile regression analysis to account for existing levels of CO₂ emissions in the region. Empirical findings reveal that GDP increases CO₂ emissions across quantiles, especially in countries where the existing level of CO₂ emissions is low. International trade improves environmental sustainability in countries where the existing levels of CO₂ emissions are at their lowest and highest levels but exacts a reversed impact on CO₂ emissions at the median. Further findings suggest that urbanization increases CO₂ emissions across the observed quantiles with a more pronounced effect in countries where the existing levels of CO₂ emissions are at its lowest level. The study also reveals a bi-directional causality between economic growth, international trade, urbanization, and the emissions of CO₂. The limitations of the study and possible direction for future research have been highlighted. Policy directions are discussed.

Keyword: Economic Growth, International Trade, Urbanization, CO₂ Emission, sub-Saharan Africa, Quantile Regression

Introduction

In recent times, protecting the environment has become an increasing concern and has dominated political, economic, social and health discussions. This is due to the dire consequences of climate change and global warming on the environment (Ahmed et al. 2021). As noted by Nathaniel and Adeleye (2020), climate change alters the natural environment, slows down the economic development process and then threatens the well-being of the society. As opined by Nathaniel and Iheonu (2019), even though the contribution of SSA countries to global CO₂ emissions are low compared to industrially advanced countries, the region is worse hit by the impact of climate change and global warming. This is because, about two-third of the African population depend majorly on natural resources and agriculture for their livelihood (Serdeczny et al. 2016). Therefore, extreme conditions like flooding and drought automatically transmit to the loss of livelihood for a vast number of Africans. It has also been observed by Shobande (2020) that the emissions of CO₂ have great consequence on infant and under-five mortality rates in Africa- a region with the highest level of child mortality (Iheonu et al. 2019). CO₂ emissions are not only culpable for climate change threat but add to global warming and makes up approximately 60% of the Greenhouse gases (GHGs) (Aye and Edoja 2017). In SSA, the level of CO₂ emissions has consistently increased as revealed in figure 1 based on data from the World Development Indicators (WDI), with its attendant effect on society.

Figure 1: SSA CO₂ Emissions (Kt), 1960-2014.



Source: WDI (2020)

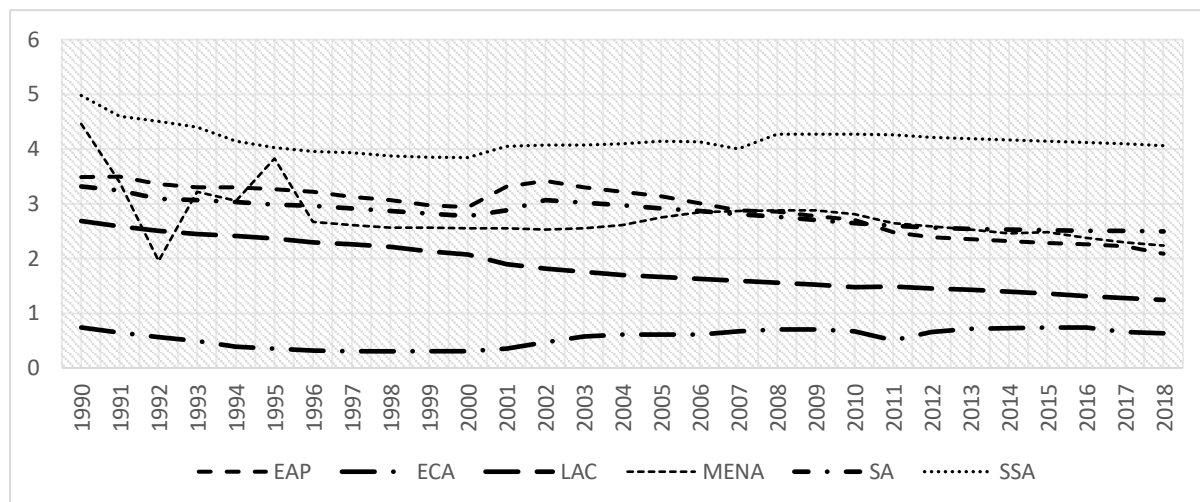
On the average, SSA emitted more than 444,000 Kiloton (Kt) of CO₂ between 1960 and 2014. In 1960, the level of CO₂ emissions in SSA stood at about 126,000Kt. However, it increased substantially to more than 822,000Kt in 2014.

Various factors have been observed to spur the level of CO₂ emissions. Environmental theories have linked economic growth, international trade, and urbanization to emissions (Nathaniel et al. 2020a,b,c). These three fundamentals we take into consideration in this study. Nathaniel et al. (2020f) observe that economic growth leads to rising CO₂ emissions level. According to Ssali et al. (2019), as nations strive to grow and develop, the demand for energy rises which lead to the increase in emissions. Put succinctly, the economic growth process of countries compels massive use of natural resources and energy, because of this, more waste is being produced leading to increased CO₂ emissions and environmental degradation (Nathaniel and Khan 2020; Adedoyin et al. 2020; Omojolaibi and Nathaniel 2020; Kasperowicz 2015). Also, economic growth emanating from structural transformation increases CO₂ emissions. This notion is embedded in the environmental Daly (1973) curve hypothesis which asserts that green development is not enough to offset the usage of scarce natural resources and the overall damage to the environment. This hypothesis posits that economic growth and production activities cause environmental pollution to persist.

The relationship between international trade and CO₂ emissions has generated mixed reactions from researchers and as such, there is no consensus on the impact of international trade on CO₂ emissions. Trade pattern, industry location, gains from trade, international relation and production costs are affected by environmental issues (Islam et al. 2012). One theory that has examines the linkage between international trade and CO₂ emission is the Pollution Haven Hypothesis. This theory emphasises that trade liberalisation creates the avenue for the movement of enterprise from countries which have strict environmental regulations to countries that do not have strict environmental regulations such as those in SSA. Trade liberalisation also influences the increase in environmental degradation because of the increase in energy demand. Furthermore, with international trade, the increase in the demand for traded goods which uses CO₂ emitting technologies would increase CO₂ emissions.

Africa is the fastest urbanizing region of the world. SSA, in particular, has continued to be urbanized more rapidly compared to other regions of the world as shown in Figure 2. Urbanization heralds rapid increase in energy demand (fossil fuels) with consequential environmental problems (Nathaniel et al. 2020d,e).

Figure 2: Urban Population Growth (Annual %)



Source: WDI (2020)

Note: EAP is East Asia and Pacific, ECA is Europe and Central Asia, LAC is Latin America and the Caribbean, MENA is Middle East and North America, SA is South Asia, SSA is Sub Saharan Africa.

The environmental transition theory explains the link between urbanization and environmental pollution. The theory hypothesizes that cities undergo a series of environmental challenges as they develop. The development of cities breeds industrialization accompanied by more energy demand leading to the increase in GHGs. The evolution of societies from low to middle-stage development promotes an increase in urban population, and thus the growth of economies takes precedence over the sustainability of the environment.

This study is justified based on the following reasons, (1) the vulnerable nature of SSA to climate change and the attendant effect on human health, livelihood and the environment, and (2) the rising rate of urbanization and the increase in international trade as the region integrates with the rest of the world. The study adds value to the existing literature by employing the quantile regression procedure which considers existing levels of CO₂ emissions across SSA and thus gives estimates across quantile points. That is, it ascertains whether existing levels of CO₂ emissions matter for the behaviour of economic growth, international trade, and urbanisation on CO₂ emissions in the region. The study also adopts the Dumitrescu and Hurlin (2012) panel causality test to examine the directions of causality

among the fundamentals to be observed. This is because the direction of causality is germane for robust policy implementation. Both techniques are utilised after ascertaining their feasibility using first-generation panel econometric methodologies.

The rest of the paper includes the literature review, the methodology and model specification, the presentation and discussion of results as well as the conclusions with relevant policy recommendations.

Literature Review

Environmental crisis facing SSA and Africa, in general, is an actual menace to the very being of the continent ranging from famine, and epidemic diseases to unmanageable peaks of industrial and household wastes, among others. Undoubtedly, protecting the quality of the environment in SSA through the effective implementation of policies is an issue that needs to be scrutinized more prudently and assimilated into an overall strategy of sustainable economic development of the region.

Dogan and Turkekul (2016) assessed the link between CO₂ emissions, real output, energy consumption, international trade, urbanization, and financial development in the United States applying the Autoregressive Distributed Lag (ARDL) model. The finding reveals that urbanization increases environmental degradation while international trade leads to environmental improvements. They further discovered a two-way causation between CO₂ emissions, Gross Domestic Product (GDP) and urbanization. Their findings were in line with the studies of Shahbaz et al. 2013; Boutabba 2014; Omri et al. 2015; Zhang et al. 2017; Marques et al. 2018; Liu and Bae 2018), but contradicts that of Ghosh (2010) who discovered no causality between CO₂ emissions and economic growth.

Khan et al. (2020) discovered that economic growth increases CO₂ emissions in Pakistan. Similarly, Mikayilov, Galeotti and Hasanov (2018) employed the ARDL Bootstrap (BT), Dynamic Ordinary Least Square (OLS), Fully Modified OLS and the Canonical Cointegrating Regression (CCR) methods with consistent results. It was revealed that economic growth had an affirmative and substantial long-term influence on the carbon emissions in Azerbaijan. In 17 transitional economies, Mitić, MunitlakIvanović and Zdravković (2017) employed DOLS and FMOLS techniques and revealed that a 1 per cent change in economic growth results in around a 0.35 per cent variation in CO₂ emissions on average, for the considered group of nations.

In Ghana, Appiah, Du Musah and Afriyie (2017) scrutinized the tie between CO₂ emissions and economic growth applying the OLS technique from 1970-2016. The result revealed that

CO₂ emissions and GDP per capita increase at a different pace and differs overtime. Correspondingly, Feng, Davis, Sun, and Hubacek (2015) examined the drivers of the United States (US) CO₂ emissions from 1997 to 2013 employing structural decomposition analysis. The result depicted that before 2007, the rise in CO₂ emission was primarily driven by economic growth but after 2007, declining emissions were the consequence of economic recession with variations in gasoline mix.

Karasoy and Akçay (2019) also made known that an increase in international trade and conventional energy increases CO₂ emissions in Turkey using the ARDL model and the Vector Error Correction Model (VECM). This, however, contradicts the finding of Jayanthakumaran, Verma and Liu (2012) and Shahbaz et al. (2013) that identified carbon emission increase because of economic growth, but international trade reduces it. Moreover, a one-way link among real GDP and carbon emission was observed in Tunisia adopting the ARDL and Error Correction Model (ECM) (Farhani and Ozturk, 2015). According to Ren, Yuan, Ma and Chen (2014), China's global embodied CO₂ emission equilibrium has been in a state of constant rise for the period 2001–2011. Using the input-output approach, they observed that the tie between per capita GDP and carbon dioxide emission is inverse N-typed and the country's industries are in the growing phase of the curve. Thus, FDI and international trade comparative advantage are two main elements boosting China's carbon emissions. Andersson (2018) employed country-specific fixed effect panel model and reveal that trade liberalization, weak ecological institutes, exchange rate policy, and legal and property rights affect emissions in China. This is also true using Pedroni (1999) and Westerlund (2007) panel cointegration, as trade openness, hampers ecological quality for the international, high, middle, and low-income panels but the influence differs in these different groups of nations (Shahbaz et al. 2017).

Baek, Cho and Koo (2009) employed a cointegration analysis to evaluate the ecological consequences of globalization on both advanced and emerging nations. The result specified that international trade and income growth tend to raise ecological quality in advanced nations, although they have damaging effects on ecological quality in most emerging nations. Causality test displayed that a deviation in trade and income advancement caused a resultant deviation in ecological quality in advanced nations while the opposite holds for emerging nations. However, in Bangladesh Islam, Cheng and Rajib (2012) employed both partial and general equilibrium analysis and discovered a strong positive relationship between global trade and CO₂ emissions from gas fuels. From the Johansen Fisher panel cointegration test, CO₂ emissions, energy consumption, economic growth, trade openness and urbanization in

newly industrialized nations are cointegrated (Hossain 2011). Furthermore, the causality test revealed no evidence of long-term causation, but unidirectional short-term causation exists from economic growth and trade openness to CO₂ emissions. However, regarding GDP, trade openness and urbanization, ecological quality is established to be standard in the long term.

A study among developed countries applying generalized least-squares panel model disclosed that the influence of growth/decline in urban populations on CO₂ emissions is asymmetrical and that the issue of decline in urbanization is linked with interferences to the creation and distribution of products in addition to electricity access and other energy sources (McGee and York 2018). Wang, Wu, Zhu and Wei (2013) analysed factors of energy-related carbon emissions applying STIRPAT procedure in Guangdong Province, China. The results specified that factors such as population, urbanization level, per capita GDP, industrialization level and service level, can cause an upsurge in CO₂ emissions. Nevertheless, a drop in CO₂ emissions can result from technology level, energy consumption structure and degree of international trade. Liu and Bae (2018) also explore the connection amid urbanization, industrialization and CO₂ emissions in China applying ARDL and VECM. The result indicates that one per cent increase of actual GDP, urbanization and industrialization raise CO₂ emissions by 0.6, 0.3 and 1.0 percent, respectively.

Ali, Bakhsh and Yasin (2019) assessed the impact of urbanization on CO₂ emissions in Pakistan employing both ARDL and VECM techniques. With a data set from 1972-2014, the findings revealed that urbanization enhances CO₂ emissions in every time dimension and one-way causation from urbanization to CO₂ emission existed in the short run. However, KhoshnevisYazdi and Dariani, (2019) found bidirectional causality between economic growth, urbanisation, and CO₂ emissions, which is supported by Salahuddin, Gow, Ali, Hossain, Al-Azami, Akbar and Gedikli (2019). Sarwar and Alsaggaf (2019) adopted the difference-GMM, system-GMM and Dynamic Mean Group (DMG) estimations procedure with outcomes revealing that urbanization has a substantial and affirmative coefficient but can be controlled by increasing the per capita income of the urban population. Furthermore, economic growth is also accountable for CO₂ emissions.

In summary, there is a consensus that economic growth and urbanisation raises the level of CO₂ emissions. The influence of international trade remains mixed. It is also observed that the studies did not take into consideration existing levels of CO₂ emissions into their analysis. This study is therefore a significant addition to the literature. Further, the reviewed studies may be offer blanket policy options with reference to the panel studies due to their inability to account for the existing level of CO₂ emissions.

Materials and Methods

Theoretical Framework and Data

Demographic and economic factors are capable of influencing environmental quality as posited by Ehrlich and Holdren (1971) in their famous ecological model (*IPAT*). The authors noted that environmental impact (*I*) could be affected by population (*P*), affluence (*A*), and technology (*T*). However, the (*IPAT*) framework was not fully embraced because of the difficulty in estimating the non-proportional impact of each of the variables on (*I*). As a result of the deficiencies of the (*IPAT*), York et al. (2003) introduced the *STIRPAT* (stochastic impacts by regression on population, affluence, and technology) framework which formed the basis of our study. The *STIRPAT* model suggests that environmental deterioration is both a function of demographic and economic factors. The *STIRPAT* equation is given as:

$$I_t = \psi_o P_t^{\xi_1} A_t^{\xi_2} T_t^{\xi_3} \mu_{it}$$

(1)

The logarithmic structure of the model, following Nathaniel (2019) is given as:

$$\ln I_{it} = \psi_i + \xi_1 \ln P_{it} + \xi_2 \ln A_{it} + \xi_3 \ln T_{it} + \mu_{it}$$

(2)

Where $\xi_1, \xi_2, \text{ and } \xi_3$ are the parameters of *P, A, and T* respectively. To remove the proportional effect on the *IPAT* model, $\psi_i, \mu_{it}, t, \text{ and } i$ represent the constant, disturbance term, time dimension, and countries, respectively. In the current study, and in line with existing literature, CO₂ emissions is our environmental impact indicator (*I*). Urbanization, GDP, trade capture *P, A, and T* respectively. We expand the *STIRPAT* model to accommodate renewable energy in line with empirical literature (Nathaniel and Iheonu 2019; Asongu, Iheonu and Odoh 2019). Bello et al. (2018) argued that *T* can be decomposed into various variables. We adopted trade in place of technology since trade transfer technological innovation (diffusion) from developed economies to either emerging economies or less developed (LDC's) economies. Technological innovation aid in reducing energy pollutants and accelerates economic activities. Also, trade openness may have a negative impact because of dumping activities from the developed economies who sees LDC's as pollution haven. Therefore, by incorporating the variables into Eq. (3) we derive the model for the study as:

$$\ln CO_{2,it} = \xi_0 + \xi_1 URB_{i,t} + \xi_2 \ln GDP_{i,t} + \xi_3 Trade_{i,t} + \xi_4 RE_{i,t} + \mu_{i,t}$$

(3)

Where $\ln CO_2$, URB , $\ln GDP$, $Trade$, and RE are the natural logarithm of carbon emissions, urbanization, the natural logarithm of GDP, trade, and renewable energy respectively.

The dataset for this study is sourced from the World Bank, World Development Indicators, WDI (2020). The time span for the study is for the period 1990 to 2016 for 34 SSA countries (see appendices annex 2). The description and measurements/functional definition of the variables are presented in Table 1. In this study, CO_2 emissions and GDP are converted to their natural logarithm.

Table 1: Variable List and Description

Variables	Description	Source
CO_2	CO_2 emissions (metric tons per capita)	WDI (2020)
GDP	Gross Domestic Product per capita (constant US\$)	WDI (2020)
Trade	Trade (percentage of GDP)	WDI (2020)
URB	Urban Population (percentage of total population)	WDI (2020)
RE	Renewable Energy Consumption	WDI (2020)

Source: Authors compilation.

Methodology

Cross Sectional Dependency Tests

The study employs three tests for cross sectional dependence in line with the nature of the dataset which has a larger number of cross sections in comparison to the time period. They include the Pesaran (2004) cross sectional dependence (CD) test, the Friedman (1937) test statistic and the Frees (1995) test statistic. The application of these tests is due to robustness purposes. According to Nathaniel and Iheonu (2019), Baltagi, Kao and Peng (2016), cross sectional dependence entails an unidentified mutual shock, and interactions among social networks. Furthermore, it entails a situation where the error terms of different entities are seen not to be mutually exclusive. According to Iheonu (2019), Iheonu et al. (2019), Iheonu and Nwachukwu (2020), ignoring the presence of cross-sectional dependence can result to invalid test statistics and estimator inefficiency. Generally, the cross-sectional dependence test has a null hypothesis where:

$$\rho_{ij} = \text{corr}(e_{it}, e_{jt}) = 0 \forall i \neq j. \quad (4)$$

Panel Unit Root Tests

In ascertaining the stationarity properties of variables, two generations of panel unit root tests exist. The first-generation panel unit root procedure assumes cross sectional independence while the second-generation panel unit root procedure accounts for cross sectional dependence. In line with the results of the test for cross sectional dependence, we apply the first generation panel unit root procedure which includes the Im, Pesaran and Shin, IPS (2003), the ADF Fisher panel unit root procedure and the PP Fisher panel unit root procedure proposed by Maddala and Wu (1999) and Choi (2001). Basically, these tests assume a variation of the autoregressive parameter for all cross sections (Agbugba, Iheonu and Onyeaka 2018), and they are employed for robustness purposes.

Panel Cointegration Tests

The study employs three panel cointegration tests. They include the panel Pedroni (1999, 2004), the Johansen Fisher panel cointegration test proposed by Maddala and Wu (1999), and the Kao (1999) panel cointegration test. These tests are jointly employed to verify the existence of long run association among the variables to be examined in the econometric model. All three cointegration tests assumes cross sectional independence. It is noted also that both the Pedroni test and the Kao test are derived through residuals which emanates from a long run static regression estimation (Adusah-Poku 2016).

Quantile Regression

To observe the relationship between economic growth, international trade, and urbanization on CO₂ emissions in SSA, the study utilises the QR to estimate the parameters all through the conditional distribution of CO₂ emissions. This is important for policy formulation because the QR aids in the articulation of countries in sub Saharan Africa with low level of CO₂ emissions, intermediate level of CO₂ emissions and high level of CO₂ emissions. Solving the optimization problem in the equation (2), we obtain the θ^{th} quantile estimate of CO₂ emissions.

$$\min_{\beta \in R^k} \left[\sum_{i \in \{i: y_i \geq x_i \beta\}} \theta |y_i - x_i \beta| + \sum_{i \in \{i: y_i < x_i \beta\}} (1-\theta) |y_i - x_i \beta| \right] \quad (5)$$

Where $\theta \in (0,1)$. According to Asongu and Nwachukwu (2016), the QR minimises the weighted sum of absolute deviation along different quantiles. In this study, we concentrate on the 10th quantile, the 25th quantile, the 50th quantile (the median), the 75th quantile and the 90th quantile in order to understand how the regressors in the model affects the level of CO₂ emissions based on initial levels of CO₂ emissions in the countries under observation. We also estimate a long run static regression of the Ordinary Least Square type with heteroskedasticity and autocorrelation consistent (HAC) standard errors. This is important to

gauge the quantile regression results and necessary due to the presence of long run cointegrating relationship between economic growth, international trade, urbanization, and CO₂ emissions.

Dumitrescu and Hurlin Granger Non-causality Test

The study drives further into the empirical analysis by examining the direction of causality among the regressors in our econometric models with the regressand (CO₂) employing the Dumitrescu and Hurlin (2012) Granger non-causality test procedure. This test help in explaining whether the regressors in the econometric model can be employed to forecast future values of CO₂ emissions. This procedure is necessary for CO₂ reducing policies in Africa. The Dumitrescu and Hurlin (2012) test allows the coefficients to be different across cross sections such that:

$$a_{0,i} \neq a_{0,j}, a_{1,i} \neq a_{1,j}, \dots, a_{n,i} \neq a_{n,j}, \forall i, j \quad (6)$$

$$b_{1,i} \neq b_{1,j}, \dots, b_{n,i} \neq b_{n,j} \forall i, j \quad (7)$$

The test is then computed running the Granger causality regression in its simplest form for each of the cross sections. The average of the test statistics is then computed. These test statistics is known as \bar{W} and the standardised version is regarded as the \bar{Z} .

Discussion of Results

This section begins with the test for cross sectional dependence in our econometric model. Table 2 presents the test result of Pesaran, Frees and Friedman. Based on the probability values which are greater than conventional levels of statistical significance, it is revealed that the econometric model is free from cross sectional dependence.

Table 2: Cross Sectional Dependence Tests

Test	Statistic	Probability value
Pesaran CD	-1.296	0.1949
Frees	4.792	0.1248
Friedman	14.549	0.9978

Source: Authors computation.

This suggests that the follow up procedures would be based on first generation panel data estimation. Table 3 reveals the IPS (2003) panel unit root test results and the ADF fisher panel unit root test results. It is revealed that the natural logarithm of CO₂ after first

difference under the IPS unit root test and under the intercept assumption but stationary in levels and first difference under the intercept and trend assumption at 1% level of statistical significance. Similar finding is revealed in the ADF unit root test results. It is also revealed that the natural logarithm of GDP is stationary after first difference under the intercept specification but stationary in levels and first difference under the intercept/trend unit root specification.

Table 3: Panel Unit Root Tests (a)

Variables	IPS		ADF-Fisher					
	Intercept		Intercept/trend		Intercept		Intercept/trend	
	Level	F.Diff	Level	F.Diff	Level	F.Diff	Level	F.Diff
CO ₂	0.5996	-15.4643***	-2.6297***	-11.3757***	61.6416	357.183***	97.0050*	250.974***
							*	
GDP	3.7839	-11.6474***	-1.8557**	-8.7030***	45.1343	268.788***	94.0493*	202.762***
							*	
Trade	-1.9508**	-15.8082***	-0.7752	-13.0397***	81.4445	365.973***	74.2729	286.067***
URB	11.0163	-2.5922***	3.9789	-40.2188***	55.5081	93.4389**	105.077*	335.634***
							**	
RE	2.0727	-13.0314***	-2.1885**	-8.7855***	44.3247	298.375	87.1121*	201.122***

Source: Authors computation.

Note: ***, ** and * represents statistical significance at 1%, 5% and 10% respectively. F.Diff is First Difference

International trade is observed to be stationary only after first difference in both unit root tests and in both unit root specifications. Similar finding is revealed for urbanisation except for the ADF fisher unit root test which is revealed to be stationary in levels and after first different under the intercept/trend unit root specification.

Table 4: Panel Unit Root Test (b)

Variables	PP-Fisher			
	Intercept		Intercept/trend	
	Level	First Difference	Level	First Difference
CO ₂	58.2659	665.325***	100.222***	733.035***
GDP	43.3066	448.704***	91.6194**	690.434***
Trade	131.811***	646.976***	646.976***	1746.22***
URB	159.262***	122.282***	374.923***	711.370***
RE	2.0727	536.143***	88.8348**	417.949***

Source: Authors computation.

Note: *** and ** represents statistical significance at 1% and 5% respectively.

We collaborate the results of table 3 with that of table 4 employing the PP fisher panel unit root test. Findings reveal stationary at first difference for all the variables in the econometric model. These results mean that we can examine a long run association between CO₂ emissions and the regressors in the model. Three panel cointegration procedures are employed as highlighted in the method section. The result of the Pedroni cointegration test in table 5 reveal 11 statistics results (inclusive of the weighted statistic). It is revealed that while 7 of the test statistic value are significant, only 4 are shown not to be significant based on their probability values. This conclusively says that there is a long run relationship existing between the regressors in the model and CO₂ emissions.

Table 5: Pedroni Panel Cointegration Test

	Statistic	Probability	Weighted Statistic	Probability
Panel v-Statistic	-0.0483	0.5193	-2.0064	0.9776
Panel rho-Statistic	-1.5934*	0.0555	-1.1258	0.1301
Panel PP-Statistic	-7.3289***	0.0000	-7.5257***	0.0000
Panel ADF-Statistic	-3.4099***	0.0003	-4.7576***	0.0000
Group rho-Statistic	1.3817	0.9165		

Group PP-Statistic	-6.0541***	0.0000
Group ADF-Statistic	-3.1212***	0.0009

Source: Authors computation.

Note: *** and * represents statistical significance at 1% and 10% respectively.

Furthermore, the results from table 6 and 7 support this conclusion. It is revealed in table 6 that there are more than four cointegration equations based on the trace test and the maximum eigenvalue test. The statistic values are revealed to be significant at 1% level. The Kao cointegration test in table 7 also reveals a probability value which denotes statistical significance at 1% level, with an ADF t-statistic of -3.5714.

Table 6: Johansen Fisher Panel Cointegration Test

Hypothesized No. of CE(s)	Fisher Stat. (trace test)	Probability	Fisher Stat. (max-eigen test)	Probability
None	702.1***	0.0000	396.6***	0.0000
At most 1	381.0***	0.0000	218.8***	0.0000
At most 2	212.5***	0.0000	141.5***	0.0000
At most 3	132.2***	0.0000	111.0***	0.0008
At most 4	112.9***	0.0005	112.9***	0.0005

Source; Authors computation.

Note: *** represents statistical significance at 1%.

Table 7: Kao Panel Cointegration Test

ADF t-statistic	Probability
-3.5714***	0.0002

Source: Authors computation.

Note: *** represents statistical significance at 1%.

Table 8 presents the result of the OLS and quantile regression estimates of the relationship between economic growth, international trade, and urbanisation in subSaharan Africa. It is revealed from the OLS estimate that GDP is a determining factor on the level of CO₂ emission in the region. A percentage increase in GDP leads to a 0.98 percentage increase in CO₂ emissions. This result shows an almost complete pass through between GDP to CO₂

emissions. In the quantile regression estimate, it is however revealed that GDP has a more pronounced positive influence in the 25th quantile i.e. countries where the initial levels of CO₂ emissions are considerably low. GDP is also revealed to exert stronger influence in the 75th and 90th quantile which are countries where the existing level of CO₂ emissions are high. Furthermore, GDP has the lowest impact on CO₂ emissions in countries where the existing level of CO₂ emission is at its lowest level--the 10th quantile.

It can also be seen that renewable energy consumption has a negative influence on CO₂ emissions in sub Saharan Africa across the observed quantiles. However, the negative influence of renewable energy on pronounced in countries where the initial level of CO₂ emission is at its highest level—the 90th quantile. This means that the adoption of renewable energy in sub Saharan African countries is highly important for the reduction of CO₂ emissions with reference to high emitting CO₂ countries in the region. Renewable energy exerts a lower influence on CO₂ emissions in the 25th and 50th quantile.

Table 8: Panel Quantile Regression

Variables	OLS	Q.10	Q.25	Q.50	Q.75	Q.90
GDP	0.9876*** (0.000)	0.9128*** (0.000)	1.0179*** (0.000)	0.9343*** (0.000)	0.9615*** (0.000)	0.9582*** (0.000)
RE	-0.0124*** (0.008)	-0.0118*** (0.000)	-0.0069*** (0.000)	-0.0079*** (0.000)	-0.0117*** (0.000)	-0.0191*** (0.000)
Trade	-0.0013 (0.677)	-0.0051*** (0.001)	0.0011 (0.221)	0.0021*** (0.002)	-0.0005 (0.463)	-0.0028** (0.037)
URB	0.0096* (0.098)	0.0202*** (0.000)	0.0083*** (0.000)	0.0097*** (0.000)	0.0096*** (0.000)	0.0072** (0.031)
Constant	-7.5949*** (0.000)	-7.9266*** (0.000)	-8.5557*** (0.000)	-7.7342*** (0.000)	-7.2118*** (0.000)	-6.1651*** (0.000)
R ² /Pseudo R ²	0.8621	0.5255	0.5964	0.6471	0.6869	0.6853
F-statistic	152.53*** (0.0000)					
VIF	2.37					

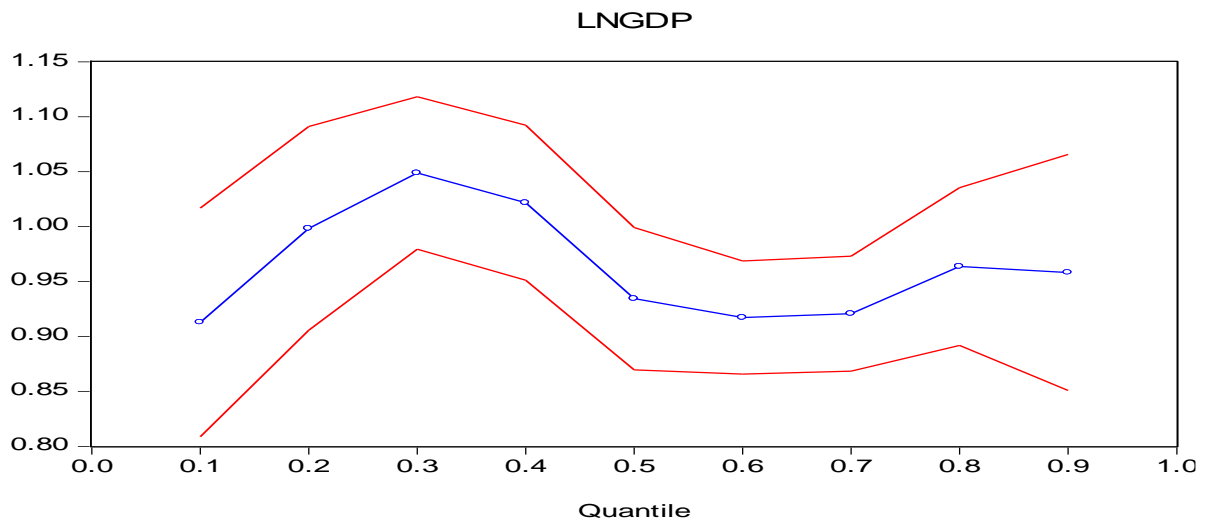
Observations	918	918	918	918	918	918
--------------	-----	-----	-----	-----	-----	-----

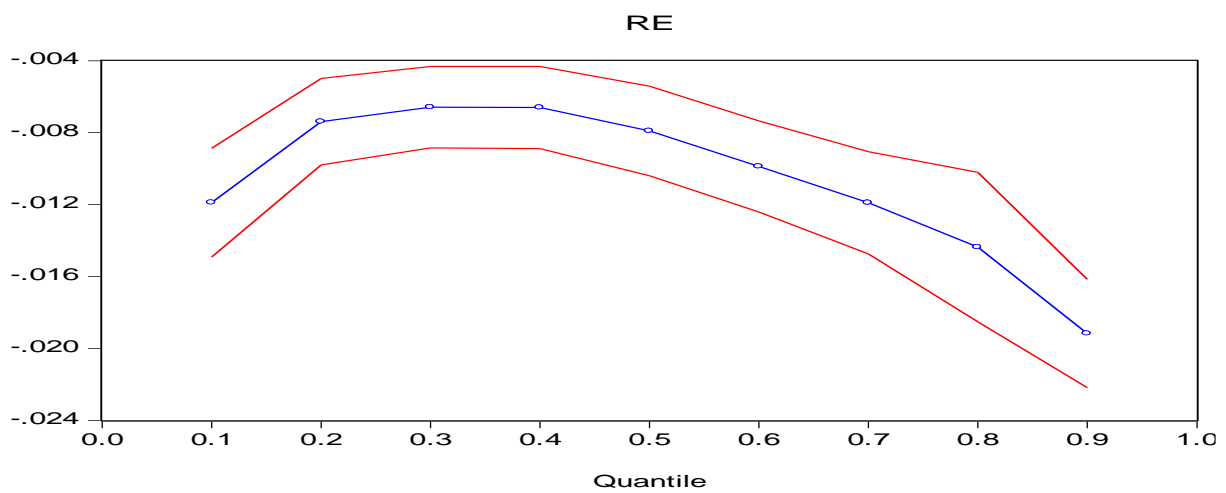
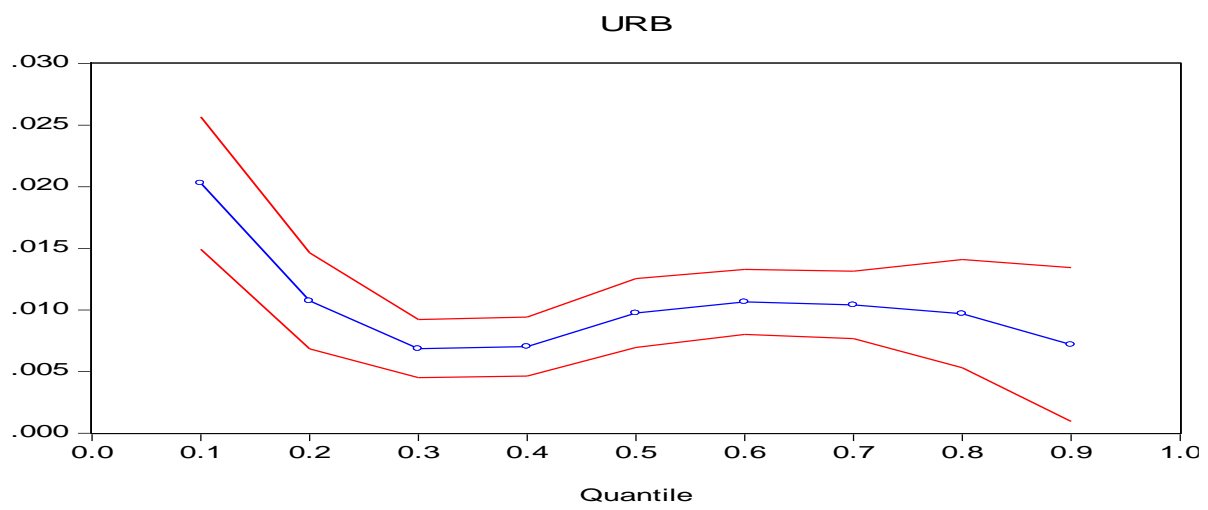
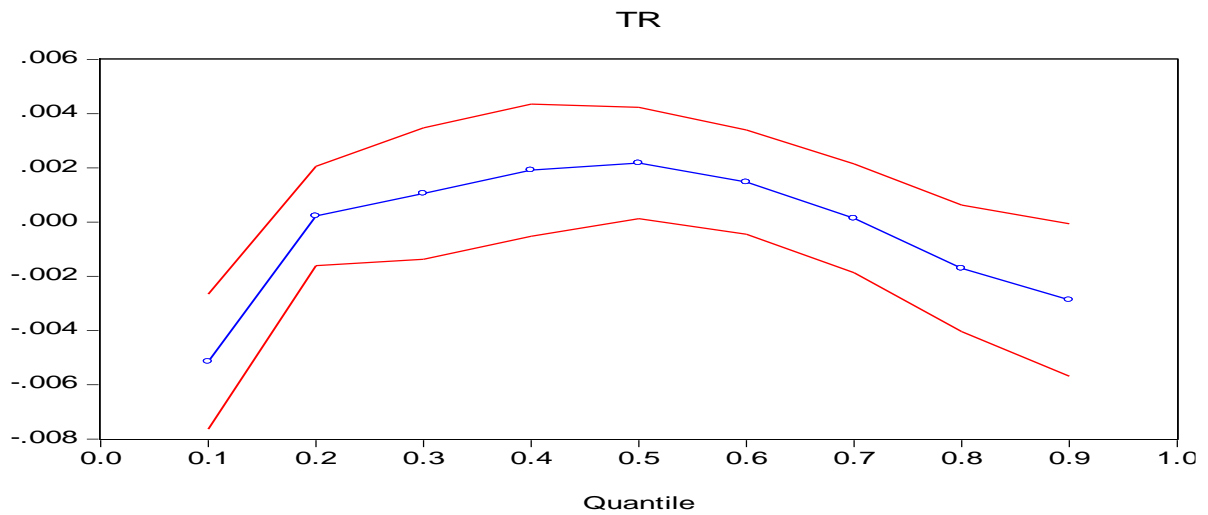
Source: Authors computation.

Note: ***, ** and * denotes statistical significance at 1%, 5% and 10% respectively. OLS standard errors are HAC. VIF is Variance Inflation Factor.

Furthermore, it is observed that international trade reduces CO₂ emissions in countries where the initial level of CO₂ emission is at its lowest level, as well as in countries where the initial levels of CO₂ emission is at its highest levels—75th and 90th quantile. It is observed that there is a positive association between international trade and CO₂ emissions in the 25th and 50th quantile. Across all quantiles, urbanisation is revealed to propel CO₂ emissions positively and significantly in sub Saharan Africa. However, urbanisation is revealed to significantly propel CO₂ emissions in countries where the initial level of CO₂ emission is at its lowest level—the 10th quantile. A further collaboration of these results is revealed in the quantile plots in figure 3.

Figure 3: Quantile Plots





Source: Authors derivation.

The quantile plots also take into consideration also quantiles observable within 0.10 to 0.90.

These figures are in tandem with the estimates in Table 8.

Table 9: Dumitrescu and Hurlin (2012) Panel Granger Non-Causality Test

Null Hypothesis	W-Stat.	Zbar-Stat.	Probability	Direction of Causality
GDP does not homogeneously cause CO ₂	5.1272	6.8179	0.0000	Bi-directional
CO ₂ does not homogeneously cause GDP	3.1301	2.1309	0.0331	
Trade does not homogeneously cause CO ₂	4.2361	4.7265	0.0000	Bi-directional
CO ₂ does not homogeneously cause Trade	4.2205	4.6898	0.0000	
URB does not homogeneously cause CO ₂	7.7319	12.9308	0.0000	Bi-directional
CO ₂ does not homogeneously cause URB	6.0811	9.0564	0.0000	
RE does not homogeneously cause CO ₂	3.2560	2.4262	0.0153	Bi-directional
CO ₂ does not homogeneously cause RE	2.9937	1.8106	0.0702	

Source: Authors computation.

Finally, the study estimates the Granger causality test as obtained in Table 9. It is revealed that across the observed estimates, bidirectional causality exists between CO₂ emissions and the regressors in the model at conventional level of statistical significance. It portrays an intuition where the regressors in the model and CO₂ emissions can be utilised to forecast

future values of each other. This is particularly necessary for policy direction pertaining to CO₂ emissions for improving the quality of the environment.

Conclusion

This study empirically analysed the role of economic growth, international trade, and urbanization on CO₂ emissions in SSA. The study utilised 34 SSA countries in a balanced panel data framework for the period 1990 to 2016 based on the availability of data. The empirical strategy began with the test for cross-sectional dependence in the model utilising the Pesaran CD test, the Frees test and the Friedman's test. The results revealed the existence of cross-sectional independence among the variables in the model. Stationary tests for each of the variables were handled using the first-generation panel unit root test of Im, Pesaran and Shin (2002), the ADF-Fisher unit root test and the PP-Fisher unit root test. The findings from the panel unit root test indicate that all the variables in the model are stationary after first difference. This means a plausibility of a long run cointegrating relationship among the variables in the model. The study utilised the Pedroni cointegration test, the Johansen Fisher cointegration test and the Kao cointegration test. The results revealed the presence of cointegration among the variables in the model. Long run estimate employing the quantile regression revealed that across the quantiles, economic growth significantly drives the emission of CO₂ emissions in sub SSA with a more substantial effect in the 25th quantile. Renewable energy consumption significantly reduces the emissions of CO₂ in SSA with a more pronounced effect in the 10th and 90th quantile. International trade significantly reduces CO₂ emissions in the 10th and 90th quantiles but significantly increases CO₂ emissions in the 50th quantile. Urbanisation increases CO₂ emissions significantly across the observed quantiles with a more adverse effect in the 10th quantile i.e. in countries where the existing level of CO₂ emission is low. Further finding from the Granger causality test reveal a bi-directional causality running from the explanatory variables and the emissions of CO₂ in SSA.

Based on these findings, the study recommends that (1) there is a need to adopt green technology in the production sector in order for the emissions of CO₂ to be abated as countries in SSA grow, (2) tax holidays for green energy use should be encouraged in the production sector as well as green energy manufacturing industries so as to attract industries to use renewable energy in production, (3) there is the need to improve on trade liberalisation to improve international trade in countries where the existing level of CO₂ emission is at its lowest and highest levels, however, in countries where the existing level of CO₂ emission are

at the intermediate level, trade restriction policies should be implemented in order to abate the emissions of CO₂, (4) it is important that governments in sub Saharan reduces the level of urbanisation. Improving economic opportunities in the rural areas and providing good infrastructure in rural areas can help reduce the migration of Africans from rural communities to urban areas. These policies are particularly important for countries where the initial level of CO₂ emission is at its lowest level, (5) the bi-directional causality between CO₂ emission and the regressors in the model entail the need for taking into consideration the past values of the regressors in the model when predicting present value of CO₂ emissions in SSA.

One of the grey areas of this study lies in not considering some of the determinants of CO₂ emissions in SSA. Data availability was also an issue as we could only consider thirty-four countries. Future studies may want to consider the impact of technological innovation and biomass production on CO₂ emissions, and the various determinants of CO₂ emissions, such as technical progress, broad-based financial development, and human capital may be taken up.

References

Adedoyin, F. F., Nathaniel, S., & Adeleye, N. (2020). An investigation into the anthropogenic nexus among consumption of energy, tourism, and economic growth: do economic policy uncertainties matter?. *Environmental Science and Pollution Research*, 1-13.

Adusah-Poku F (2016) Carbon dioxide emissions, urbanization and population: empirical evidence from Sub-Saharan Africa. *Energy Economics Letters* 3(1):1-16.

- Agbugba I, Iheonu C, Onyeaka K (2018) Homogeneous and Heterogeneous Effect of Exchange Rate on Economic Growth in African Countries. *International Journal of Economics, Commerce and Management* 6(9):1-14.
- Ahmed, Z., Nathaniel, S. P., & Shahbaz, M. (2021). The criticality of information and communication technology and human capital in environmental sustainability: Evidence from Latin American and Caribbean countries. *Journal of Cleaner Production*, 125529.
- Ali R, Bakhsh K, Yasin MA (2019) Impact of urbanization on CO2 emissions in emerging economy: evidence from Pakistan. *Sustainable Cities and Society* 48:101553.
- Andersson FN (2018) International trade and carbon emissions: The role of Chinese institutional and policy reforms. *Journal of environmental management* 205:29-39.
- Andrew RM, Davis SJ, Peters GP (2013) Climate policy and dependence on traded carbon. *Environmental Research Letters* 8(3):034011.
- Anwar A, Younis M, Ullah I (2020) Impact of urbanization and economic growth on CO2 emission: A case of far East Asian countries. *International Journal of Environmental Research and Public Health* 17(7):2531.
- Appiah K, Du J, Musah AAI, Afriyie S (2017) Investigation of the Relationship between Economic Growth and Carbon Dioxide (CO2) Emissions as Economic Structure Changes: Evidence from Ghana. *Resources and Environment* 7(6):160-167.
- Asongu S, Nwachukwu J (2016) The role of Governance in mobile phones for Inclusive Human Development in Sub-Saharan Africa. *Technovation* 1-13.
- Asongu S, Iheonu C, Odo K (2020) The conditional relationship between renewable energy and environmental quality in sub Saharan Africa. *Environmental Science and Pollution Research* doi:10.1007/s11356-019-06846-9
- Aye GC, Edoja PE (2017) Effect of Economic Growth on CO2 Emission in Developing Countries: Evidence from a Dynamic Panel Threshold Model. *Cogent Economics & Finance* 5(1).
- Baek J, Cho Y, Koo WW (2009) The environmental consequences of globalization: A country-specific time-series analysis. *Ecological economics* 68(8-9):2255-2264.

- Begum RA, Sohag K, AbdullahSMS, Jaafar M (2015) CO2 Emissions, Energy Consumption, Economic and Population Growth in Malaysia. *Renewable and Sustainable Energy Reviews* 41:594-601.
- Ben Jebli M, Ben Youssef S, Ozturk I (2015) The role of renewable energy consumption and trade: Environmental kuznets curve analysis for sub-saharan Africa countries. *African Development Review* 27(3):288-300.
- Boutabba MA (2014) The impact of financial development, income, energy and trade on carbon emissions: evidence from the Indian economy. *Economic Modelling* 40:33-41.
- Choi I (2001) Unit Root Tests for Panel Data. *Journal of International Money and Finance* 20:249-272.
- Dumitrescu E, Hurlin C (2012) Testing for Granger Non-Causality in Heterogeneous Panels. *Economic Modelling* 46(1):1450-1460.
- Effiong E (2016) Urbanization and Environmental Quality in Africa. *Munich Personal RePEc Archive*, , No. 73224.
- Farhani S, Ozturk I (2015) Causal relationship between CO2 emissions, real GDP, energy consumption, financial development, trade openness, and urbanization in Tunisia. *Environmental Science and Pollution Research* 22(20):15663-15676.
- Feng K, Davis SJ, Sun L, Hubacek K (2015) Drivers of the US CO2 Emissions 1997–2013. *Nature Communications* 6(1):1-8.
- Frees E (1995) Assessing cross-sectional correlation in panel data. *Journal of Econometrics* 69:393-414.
- Friedman M (1937) The use of ranks to avoid the assumption of normality implicit in the analysis of variance. *Journal of the American Statistical Association* 32:675-701.
- Ghosh S (2010) Examining carbon emissions economic growth nexus for India: a multivariate cointegration approach. *Energy Policy* 38(6):3008-3014.
- Gogan E, Turkecul B (2016) CO2 Emissions, Real Output, Energy Consumption, Trade, Urbanisation and Financial Development: Testing the EKC Hypothesis for the USA. *Environmental Science and Pollution Research* 23(2):1203-1213.

- Gorus MS, Aydin M(2019) The relationship between energy consumption, economic growth, and CO2 emission in MENA countries: causality analysis in the frequency domain. *Energy* 168:815-822.
- Hasanov FJ, Liddle B, Mikayilov JI (2018) The impact of international trade on CO2 emissions in oil exporting countries: Territory vs consumption emissions accounting. *Energy Economics* 74:343-350.
- Hossain MS (2011) Panel estimation for CO2 emissions, energy consumption, economic growth, trade openness and urbanization of newly industrialized countries. *Energy Policy* 39(11):6991-6999.
- Hossain S(2012) An Econometric Analysis for CO2 Emissions, Energy Consumption, Economic Growth, Foreign Trade and Urbanization of Japan. *Low Carbon Economy* 3:92-105.
- Iheonu C (2019) Governance and Domestic Investment in Africa. *European Journal of Government and Economics*, 8(1):63-80.
- Iheonu C, Nwachukwu T (2020) Macroeconomic determinants of household consumption in selected West African countries. *Economics Bulletin* 40(2):1596-1606.
- Iheonu C, Agbutun S, Omenihu C, Ihedimma G, Osuagwu V (2019) The impact of Governance Quality on Mortality Rates in Sub Saharan Africa. *African Population Studies* 33(1):4655-4668.
- Im K, Pesaran M, Shin Y (2003) Testing for Unit Roots in Heterogeneous Panels. *Journal of Econometrics* 115:53-74.
- Islam MR, Cheng Y, RajibSU (2012) International Trade and Carbon Emissions (CO2): The Case of Bangladesh. *Journal of Economics and Sustainable Development* 3(5):18-26.
- Jayanthakumaran K, Verma R, Liu Y (2012) CO2 emissions, energy consumption, trade and income: a comparative analysis of China and India. *Energy Policy* 42:450-460.
- Kao C (1999) Spurious Regression and Residual Based Tests for Cointegration in Panel Data. *Journal of Econometrics*90:1-44.

- Karasoy A, Akçay S (2019) Effects of Renewable Energy Consumption and Trade on Environmental Pollution. *Management of Environmental Quality: An International Journal*.
- Kasperowicz R (2015) Economic Growth and CO2 Emissions: The ECM Analysis. *Journal of International Studies*8(3):91-98.
- Khan MK, Khan MI, RehanM (2020) The Relationship between Energy Consumption, Economic Growth and Carbon Dioxide Emissions in Pakistan. *Financial Innovation* 6(1):1-13.
- Khoshnevis Yazdi S, Dariani AG (2019) CO2 emissions, urbanisation and economic growth: evidence from Asian countries. *Economic research-Ekonomska istraživanja* 32(1):510-530.
- Liu X, BaeJ (2018)Urbanization and industrialization impact of CO2 emissions in China. *Journal of cleaner production* 172:178-186.
- Maddala G, Wu S (1999) A Comparative Study of Unit Root Tests with Panel Data and a New Simple Test. *Oxford Bulletin of Economics and Statistics* 61(0):631-652.
- Marques AC, Fuinhas JA, Leal PA (2018) The impact of economic growth on CO2 emissions in Australia: the environmental Kuznets curve and the decoupling index. *Environmental Science and Pollution Research*25(27):27283-27296.
- McGee JA, York R (2018) Asymmetric relationship of urbanization and CO2 emissions in less developed countries. *PloS one* 13(12):e0208388.
- Mitić P, Munitlak Ivanović O, Zdravković A (2017) A cointegration analysis of real GDP and CO2 emissions in transitional countries. *Sustainability* 9(4):568.
- Muhammad B (2019) Energy consumption, CO2 emissions and economic growth in developed, emerging and Middle East and North Africa countries. *Energy* 179:232-245.
- Muhammad S, Long X, SalmanM, Dauda L (2020) Effect of Urbanisation and International Trade on CO2 Emissions Across 65 Belt and Road Initiative Countries.*Energy* 196:117102.

- Nathaniel, S. P. (2019). Modelling urbanization, trade flow, economic growth and energy consumption with regards to the environment in Nigeria. *GeoJournal*, 1-15.
- Nathaniel, S. P., & Adeleye, N. (2020). Environmental Preservation amidst Carbon Emissions, Energy Consumption, and Urbanization in Selected African Countries: Implication for Sustainability. *Journal of Cleaner Production*, 125409.
- Nathaniel S, Iheonu C (2019) Carbon Dioxide Abatement in Africa: The role of Renewable and Non-renewable Energy Consumption. *Science of the Total Environment* 679:337-345.
- Nathaniel, S. P., Adeleye, N., & Adedoyin, F. F. (2020a). Natural Resource Abundance, Renewable Energy, and Ecological Footprint Linkage in MENA Countries. *Studies of Applied Economics*, 39(2).
- Nathaniel, S. P., Nwulu, N., & Bekun, F. (2020b). Natural resource, globalization, urbanization, human capital, and environmental degradation in Latin American and Caribbean countries. *Environmental Science and Pollution Research*, 1-15.
- Nathaniel, S. P., Yalçiner, K., & Bekun, F. (2020c). Assessing the environmental sustainability corridor: Linking natural resources, renewable energy, human capital, and ecological footprint in BRICS. *Resources Policy*, 1-13.
- Nathaniel, S., Aguegbah, E., Iheonu, C., Sharma, G., & Shah, M. (2020d). Energy consumption, FDI, and urbanization linkage in coastal Mediterranean countries: re-assessing the pollution haven hypothesis. *Environmental Science and Pollution Research*, 27(28), 35474-35487.
- Nathaniel, S., Anyanwu, O., & Shah, M. (2020e). Renewable energy, urbanization, and ecological footprint in the Middle East and North Africa region. *Environmental Science and Pollution Research*, 1-13.
- Nathaniel, S., Barua, S., Hussain, H., & Adeleye, N. (2020f). The determinants and interrelationship of carbon emissions and economic growth in African economies: Fresh insights from static and dynamic models. *Journal of Public Affairs*, e2141.

- Nathaniel, S., & Khan, S. A. R. (2020). The nexus between urbanization, renewable energy, trade, and ecological footprint in ASEAN countries. *Journal of Cleaner Production*, 272, 122709.
- Ogujiuba K, Ehigiamusoe UK, Udefuna P (2013)The Challenges and Implications of Sustainable Development in Africa: Policy Options for Nigeria. *Journal of Economic Cooperation and Development* 34(4):77-112.
- Omojolaibi, J., & Nathaniel, S. (2020). Assessing the potency of environmental regulation in maintaining environmental sustainability in MENA countries: An advanced panel data estimation. *Journal of Public Affairs*, e2526.
- Omri A, Daly S, Rault, C, Chaibi, A (2015)Financial development, environmental quality, trade and economic growth: What causes what in MENA countries. *Energy Economics* 48:242-252.
- Pedroni P(1999) Critical values for cointegration tests in heterogeneous panels with multiple regressors. *Oxford Bulletin of Economics and statistics* 61(S1):653-670.
- Pesaran M (2004) General Diagnostic Test for Cross Section Dependence in Panels. University of Cambridge, Faculty of Economics Working Paper 0435.
- RayhanI, Akter K, Islam MS, Hossain MA (2018) Impact of Urbanization and Energy Consumption on CO2 Emissions in Bangladesh: An ARDL Bounds Test Approach. *International Journal of Scientific & Engineering Research* 9(6):838-843.
- Ren S, Yuan B, Ma X, Chen X (2014) The impact of international trade on China' s industrial carbon emissions since its entry into WTO. *Energy policy*69:624-634.
- Saboori B, Sulaiman J, Mohd S(2012) Economic growth and CO2 emissions in Malaysia: a cointegration analysis of the environmental Kuznets curve. *Energy policy*51:184-191.
- Salahuddin M, Gow J, Ali MI, Hossain MR, Al-Azami KS, Akbar D, Gedikli A (2019) Urbanization-globalization-CO2 emissions nexus revisited: empirical evidence from South Africa. *Heliyon* 5(6):e01974.

- Sarwar S, Alsaggaf MI (2019) Role of Urbanization and Urban Income in Carbon Emissions: Regional analysis of China. *Applied Ecology and Environmental Research* 17(5):10303-10311.
- Serdeczny O, Adams S, Baarscgi F, Coumou D, Robinson A, Hare W, Schaeffer M, Perrette M, Reinhardt J (2016) Climate Change Impacts in Sub-Saharan Africa: from Physical Changes to their Social Repercussions. *Regional Environmental Change* 15.
- Shahbaz M, Hye QMA, Tiwari AK, Leitão NC (2013) Economic growth, energy consumption, financial development, international trade and CO₂ emissions in Indonesia. *Renewable and Sustainable Energy Reviews* 25:109-121.
- Shahbaz M, Nasreen S, Ahmed K, Hammoudeh S (2017) Trade openness–carbon emissions nexus: the importance of turning points of trade openness for country panels. *Energy Economics* 61:221-232.
- Shaheen A, Sheng J, Arshad S, Salam S, Hafeez M (2020) The Dynamic Linkage between Income, Energy Consumption, Urbanization and Carbon Emissions in Pakistan. *Polish Journal of Environmental Studies* 29(1):267-276.
- Shobande O (2020) The effect of energy use on infant mortality rates in Africa. *Environmental and Sustainability Indicators* 5:100015.
- Ssali MW, Dui J, Mensah IA, Hongo DO (2019) Investigating the Nexus Among Environmental Pollution, Economic Growth, Energy Use and Foreign Direct Investment in 6 Selected Sub-Saharan African Countries. *Environmental Science and Pollution Research* 26:11245-11260.
- Sun H, Clotey SA, Geng Y, Fang K, Amissah JCK (2019) Trade Openness and Carbon Emissions: Evidence from Belt and Road Countries. *Sustainability* 11:2682.
- Wang P, Wu W, Zhu B, Wei Y (2013) Examining the impact factors of energy-related CO₂ emissions using the STIRPAT model in Guangdong Province, China. *Applied Energy* 106:65-71.
- Westerlund J (2007) Testing for error correction in panel data. *Oxford Bulletin of Economics and statistics* 69(6):709-748.

Zhang S, Liu X, Bae J (2017) Does trade openness affect CO₂ emissions: evidence from ten newly industrialized countries?. *Environmental Science and Pollution Research* 24(21):17616-17625.

Appendices

Annex 1:

Lists of countries

Benin, Botswana, Burkina Faso, Burundi, Cabo Verde, Cameroon, Central African Republic, Chad, Comoros, Congo, Cote d'Ivoire, Eswatini, Gabon, Gambia, Ghana, Guinea, Guinea-Bissau, Kenya, Madagascar, Malawi, Mali, Mauritania, Mauritius, Nigeria, Rwanda, Senegal, Seychelles, Sierra Leone, South Africa, Sudan, Tanzania, Togo, Uganda, Zimbabwe.