

Bodnar, Olha; Eriksson, Viktor

Working Paper

Bayesian model selection: Application to adjustment of fundamental physical constants

Working Paper, No. 7/2021

Provided in Cooperation with:

Örebro University School of Business

Suggested Citation: Bodnar, Olha; Eriksson, Viktor (2021) : Bayesian model selection: Application to adjustment of fundamental physical constants, Working Paper, No. 7/2021, Örebro University School of Business, Örebro

This Version is available at:

<https://hdl.handle.net/10419/244581>

Standard-Nutzungsbedingungen:

Die Dokumente auf EconStor dürfen zu eigenen wissenschaftlichen Zwecken und zum Privatgebrauch gespeichert und kopiert werden.

Sie dürfen die Dokumente nicht für öffentliche oder kommerzielle Zwecke vervielfältigen, öffentlich ausstellen, öffentlich zugänglich machen, vertreiben oder anderweitig nutzen.

Sofern die Verfasser die Dokumente unter Open-Content-Lizenzen (insbesondere CC-Lizenzen) zur Verfügung gestellt haben sollten, gelten abweichend von diesen Nutzungsbedingungen die in der dort genannten Lizenz gewährten Nutzungsrechte.

Terms of use:

Documents in EconStor may be saved and copied for your personal and scholarly purposes.

You are not to copy documents for public or commercial purposes, to exhibit the documents publicly, to make them publicly available on the internet, or to distribute or otherwise use the documents in public.

If the documents have been made available under an Open Content Licence (especially Creative Commons Licences), you may exercise further usage rights as specified in the indicated licence.



WORKING PAPER 7/2021 (STATISTICS)

Bayesian model selection: Application to adjustment of fundamental physical constants

Olha Bodnar and Viktor Eriksson

ISSN 1403-0586

Örebro University School of Business
SE-701 82 Örebro, Sweden

Bayesian model selection: Application to adjustment of fundamental physical constants

Olha Bodnar¹ and Viktor Eriksson²

¹Unit of Statistics, School of Business, Örebro University, SE-70182 Örebro, Sweden

²Department of Statistics, Uppsala University, Sweden, SE-75236 Uppsala, Sweden

May 7, 2021

Abstract

The location-scale model is usually present in physics and chemistry in connection to the Birge ratio method for the adjustment of fundamental physical constants such as the Planck constant or the Newtonian constant of gravitation, while the random effects model is the commonly used approach for meta-analysis in medicine. These two competitive models are used to increase the quoted uncertainties of the measurement results to make them consistent. The intrinsic Bayes factor (IBF) is derived for the comparison of the random effects model to the location-scale model, and we answer the question which model performs better for the determination of the Newtonian constant of gravitation. The results of the empirical illustration support the application of the Birge ratio method which is currently used in the adjustment of the CODATA 2018 value for the Newtonian constant of gravitation together with its uncertainty. The results of the simulation study illustrate that the suggested procedure for model selection is decisive even when data consist of a few measurement results.

Keywords: Intrinsic Bayes factor; Birge ratio method; Location-scale model; Random-effects model; Reference prior; Meta-analysis; Interlaboratory comparison study; Newtonian constant of gravitation

JEL Classification: C11; C18; C02

1 Introduction

Fundamental constants in physics and chemistry, like the Newtonian constant of gravitation or the Planck constant, are usually determined by results of several studies which are performed at different times and places (Mohr et al. (2016), Newell et al. (2018), Alighanbari et al. (2020)). In many applications in medicine the consensus value is obtained by pooling the results of clinical studies together (Brockwell and Gordon (2001), Lambert et al. (2005), Higgins et al. (2009), Rukhin (2013), Bodnar et al. (2017), Jones et al. (2018)), while interlaboratory comparison study is one of the most important topics in metrology (Mandel and Paule (1970), Rukhin (2003), Bodnar and Elster (2020)).

Each individual study reports an estimate of the quantity of interest together with its uncertainty which are based, for example, on measurements obtained in laboratories in physics and chemistry where a great care is taken to determine the measurement margin of error such that it accounts for every identifiable source of error. For that reason, it might therefore be assumed that an individual study estimate is internally consistent, i.e., its uncertainty takes into account of every identifiable (hence explainable) source of uncertainty.

Although the individual studies are internally consistent, they often fail to be externally consistent. More precisely, when the estimates together with their uncertainties from all individual studies are brought together in a scatterplot, it is usually revealed that the dispersion of the estimates is substantially greater than what the reported uncertainties suggest them to be. Such a situation is depicted in Figure 1 where the measurements of the Newtonian constant of gravitation G are presented together with reported uncertainties. Most of the uncertainties provided by laboratories are not able to capture the variation observed in the scatterplot.

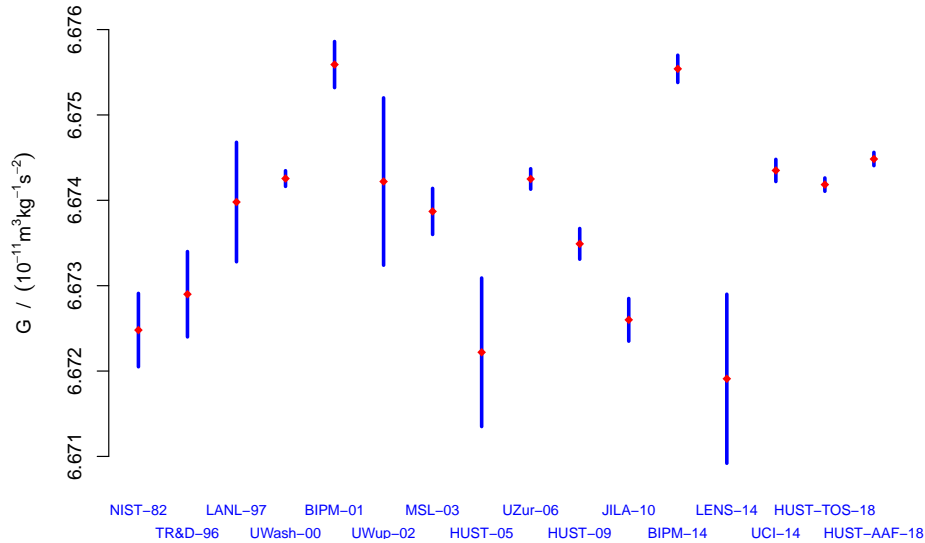


Figure 1: Newtonian constant of gravitation G . The red diamonds are the measurement results and the blue intervals are the uncertainties provided by each laboratory (data are from Figure 1 in Bodnar et al. (2020)).

The reported uncertainties take into account every identifiable source of error in each individual study, yet these uncertainties fail to explain the full variation between the estimates satisfactory. The extra variation is caused by external inconsistency, i.e., inconsistency between the laboratories or

interlaboratory inconsistency. This extra variation is usually labeled as the heterogeneity and it also be referred to as the excess variance or as the dark uncertainty (see, Thompson and Ellison (2011)). It is remarkable that the heterogeneity is unexplainable and cannot be resolved easily.

Birge ratio method and random effects meta-analysis seem be the two most popular approaches to account for the dark uncertainty when the results of several studies are pooled together. Birge ratio method is generally favored by physicists and chemists in parameter estimation (Mohr et al. (2016)). It is related to the Birge ratio introduced by Birge (1932) and is used to adjust for inconsistent data in Weise and Wöger (2000) and Mohr et al. (2016), among others. The random effects model is generally favored by medical researchers in parameter estimation (see, Hardy and Thompson (1998), Ades et al. (2005), Turner et al. (2015), Guolo and Varin (2017), Veroniki et al. (2019)). It has been used in chemistry for interlaboratory comparisons in Mandel and Paule (1970) and in Toman et al. (2012). In Bodnar et al. (2016b) objective Bayesian inferences are established for the generalized random effects model and are used to estimate the Planck constant.

The random effects model has been compared to the Birge ratio methods presented as the location-scale model in Bodnar et al. (2016a). The comparison of two models was performed in terms of robustness analysis to model misspecification by computing coverage intervals for the overall mean. The results of the numerical study reveal that the random effects model is more robust to model misspecification than the location-scale model. Namely, when the data were generated from the location-scale model but the random effects model was used to estimate the overall mean, then the coverage probability was roughly 95%, the significance level used in the simulation study. However, when the data were drawn from the random effects model but the location-scale model was used to estimate the overall mean, then the coverage probability was found to be roughly 0.45%. As a result, one can remark that if the location-scale model is actually true, then the random effects model can still do a good job at estimating the overall mean, while if the random effects model is actually true, then the application of the location-scale model can lead to unreliable inference for the overall mean. Finally, it can be noted that both models have good coverage probabilities given that the used model is the true one.

The results of Bodnar et al. (2016a) present only one aspect of model selection procedures and they do not provide an answer to the question which model is more preferable to the observed data. In the paper we contribute to this challenging task by developing a new approach to distinguish between the two models for dark uncertainty from the viewpoint of objective Bayesian statistics by performing model selection based on intrinsic Bayes factor. There are several reasons to opt for Bayesian model selection (see, e.g., Berger and Pericchi (2001, p.138-140): (i) the Bayes factor is interpreted as an odds factor which is easy to understand; (ii) it is an automatic Ockham's razors since it favor a simple model over a complex model; (iii) the Bayes factor is a consistent method, which means that if any of the compared models is true, then the true model is selected (given some mild conditions are satisfied); (iv) it does not require models to be nested, which makes it possible to compare different types of models in which the parameters may vary in dimension. Some of the difficulties with the Bayes factor is also stated in Berger and Pericchi (2001, p.142). For example, the Bayes factor can be difficult to compute. Also, the Bayes factor does not usually return good answers when we use vague proper priors leading to the application of improper noninformative priors.

Traditionally, the Bayes factor is computed by endowing the model parameters with an informative prior. On the other hand, no information or only vague information about model parameters can be present in practice (see, e.g., Lambert et al. (2005)). As a result, the influence of the prior distribution

on the Bayes factor is greater than it is on the estimation of a parameter. This is because the weight of the prior distribution is not reduced with an increasing sample size in the Bayes factor (Berger and Pericchi (1996)). The Bayes factor is therefore particularly vulnerable to misspecifications in the prior distribution and for this reason we look for an objective noninformative prior, like a Laplace prior (Laplace (1812)), Jeffreys prior (Jeffreys (1946)) or reference prior (Berger and Bernardo (1992)) which is obtained by maximizing the Shannon mutual information between the prior and posterior, thus reducing the impact of the prior on posterior (see, Berger and Bernardo (1992), Clarke and Yuan (2004), Berger et al. (2009), Bodnar and Elster (2014a)). The Berger and Bernardo reference prior is recommended for use in the computation of intrinsic Bayes factor for large sample sizes (Berger and Pericchi (1996, p.121)).

There are various approaches for objective Bayesian model selection, however the methods usually have some limitations or difficulties in their implementations. The traditional Bayes factor computed by endowing an informative proper prior cannot be longer used for objective Bayesian model selection based on a noninformative priors which are usually improper. A modification of the definition of the conventional Bayes factor is required. Several approaches exist in the literature with the ones proposed by O'Hagan (1995)) and Berger and Pericchi (1996) seem to be the ones which are mostly used. O'Hagan (1995) suggested the application of the fractional Bayes factor for the model selection when an improper prior is used, while Berger and Pericchi (1996) developed the theory of the Bayesian model selection based on the intrinsic Bayes factor. Moreover, Berger and Pericchi (1996, p.121) recommended the use of the Berger and Bernardo reference prior in the computation of intrinsic Bayes factor for large sample sizes. The benefit with the intrinsic Bayes factor is that it is automatic (objective) in the sense that it only depends on observed data and noninformative prior distribution. It may, however, be computationally intensive and unstable (see, Berger and Pericchi (1996, p.120-121)). The intrinsic Bayes factor makes use of a minimal training sample for parameter estimation and in order to make for a stable result it is conventional to take the average or median of the intrinsic Bayes factors computed over all possible training samples. The empirical probability for the Bayesian model selection based on the intrinsic Bayes factor will be introduced in this paper and applied in the empirical illustration about the Newtonian constant of gravitation.

The rest of the paper is organized as follows. In Section 2, we introduce the concept of Bayesian model selection with the special emphasis on the case when the model parameters are endowed with a noninformative prior. The competitive models, namely the location-scale model related to the Birge ratio approach and the random effects model, are presented in Section 3. Here, we also derive the quantities needed in the computation of the intrinsic Bayes factor. In Section 4 we provide a numerical comparison of the procedures in the small sample case, while it is implemented to the measurements of the Newtonian constant of gravitation in Section 5. Discussion of the obtained results are given in Section 6, while the derivation of theoretical results is presented in the appendix (Section 7).

2 Bayesian model selection

In this section we introduce the Bayes factor, provide its interpretation, and discuss its use for model comparison. Let $M_1, \dots, M_i, \dots, M_q$ denote the models that we aim to make a comparison between. Under model M_i the data \mathbf{x} follow the probability density function $f_i(\mathbf{x}|\boldsymbol{\theta}_i)$ with $\boldsymbol{\theta}_i \in \Theta_i$, which is also referred to as the likelihood function. In the Bayesian approach to model selection we start by

assigning for each model M_i a prior probability $P(M_i)$ of the model M_i being correct and a prior distribution $\pi_i(\boldsymbol{\theta}_i)$ of the parameter $\boldsymbol{\theta}_i$. Then the posterior probability $P(M_i|\mathbf{x})$ of the model M_i being correct when the sample \mathbf{x} is observed is given by

$$P(M_i|\mathbf{x}) = \left(\sum_{j=1}^q \frac{P(M_j)}{P(M_i)} B_{ji}(\mathbf{x}) \right)^{-1},$$

where

$$B_{ji}(\mathbf{x}) = \frac{m_j(\mathbf{x})}{m_i(\mathbf{x})} = \frac{\int f_j(\mathbf{x}|\boldsymbol{\theta}_j)\pi_j(\boldsymbol{\theta}_j)d\boldsymbol{\theta}_j}{\int f_i(\mathbf{x}|\boldsymbol{\theta}_i)\pi_i(\boldsymbol{\theta}_i)d\boldsymbol{\theta}_i}$$

is the Bayes factor between M_j and M_i and

$$m_i(\mathbf{x}) = \int_{\boldsymbol{\theta}_i \in \Theta_i} f_i(\mathbf{x}|\boldsymbol{\theta}_i)\pi_i(\boldsymbol{\theta}_i)d\boldsymbol{\theta}_i$$

is the marginal distribution of the data under model M_i , which describes the probability of observing \mathbf{x} under model M_i .

The posterior probability $P(M_i|\mathbf{x})$ is dependent on subjectively chosen prior probabilities $P(M_i)$ for $i = 1, 2, \dots, q$ of the model M_i being correct. If one prefers the Bayesian model selection procedure to be objective, then she/he shall assign equal prior probabilities to the considered models, that is $P(M_1) = \dots = P(M_q) = 1/q$. In this case the posterior probability $P(M_i|\mathbf{x})$ used for the selection of a model will depend on the Bayes factors $B_{ji}(\mathbf{x})$ only. In a special case, when $q = 2$, the Bayes factor $B_{ji}(\mathbf{x})$ can alone be used to perform Bayesian model selection. The Bayes factor is interpreted as the odds in favor of M_j against M_i based on the evidence in the data \mathbf{x} . The inequality $B_{ji} > 1$ is supportive of model M_j , while $B_{ji} < 1$ is interpreted as evidence against M_j . Finally, it is noted that the prior distributions $\pi_i(\boldsymbol{\theta}_i)$ of the parameter $\boldsymbol{\theta}_i$ are subjective because they are decided prior to the data, but they are objective if one will use a noninformative prior.

The Bayes factor can also be interpreted as an odds factor if the marginal distribution $m_i(\mathbf{x})$ is proper, such that $\int_{\mathbf{x} \in \Omega} m_i(\mathbf{x})d\mathbf{x} = 1$ for all $i = 1, \dots, q$. However, the latter equality may not always be fulfilled when the model parameters are endowed with an improper prior, denoted by $\pi_i^N(\boldsymbol{\theta}_i)$, i.e., when objective Bayesian inference are preferable. An improper prior distribution $\pi_i^N(\boldsymbol{\theta}_i)$ cannot have a normalizing constant and its application leads to the improper marginal distribution of data $m_i(\mathbf{x})$. As a result, one cannot longer apply the conventional Bayesian model selection without a modification of the definition of the Bayes factor. In the next section, we describe the intrinsic Bayes factor developed by Berger and Pericchi (1996) for Bayesian model selection with improper noninformative priors.

2.1 Intrinsic Bayes factor

The intrinsic Bayes factor (IBF) is a solution to the problem that is imposed on the Bayes factor by the improper prior distribution, namely that the Bayes factor has no interpretation as an odds factor under an improper prior distribution. The IBF differs from the ordinary Bayes factor in that it makes use of a training sample. The training sample is employed for the purpose of transforming the improper prior distribution to the proper posterior distribution, which is then used as a prior for the rest of the elements in the sample.

The training sample \mathbf{x}_ℓ is a subset of \mathbf{x} of size m . Let $\mathbf{x}_{(\ell)} = \mathbf{x} - \mathbf{x}_\ell$ be the data set with the training sample removed. Then \mathbf{x}_ℓ and $\mathbf{x}_{(\ell)}$ forms a partition of \mathbf{x} . A training sample, \mathbf{x}_ℓ , is called

proper if $0 < \pi_i^N(\boldsymbol{\theta}_i|\mathbf{x}_\ell) < \infty$ for all M_i , and minimal if it is proper and no subset of \mathbf{x}_ℓ is proper. The notation $\pi_i^N(\boldsymbol{\theta}_i|\mathbf{x}_\ell)$ stands for the posterior distribution of $\boldsymbol{\theta}_i$ computed based on the noninformative prior $\pi_i^N(\boldsymbol{\theta}_i)$ and sample \mathbf{x}_ℓ . As a result, the training sample is used to transform the improper prior $\pi_i^N(\boldsymbol{\theta}_i)$ to the proper posterior $\pi_i^N(\boldsymbol{\theta}_i|\mathbf{x}_\ell)$, which is then used in the computation of the conditional distribution of $\mathbf{x}_{(\ell)}$ given the training sample \mathbf{x}_ℓ . It is noted that a part of data, that could have been used for computing the Bayes factor, is lost since it is needed for the specification of the proper posterior $\pi_i^N(\boldsymbol{\theta}_i|\mathbf{x}_\ell)$. We are sacrificing a portion of the data set \mathbf{x} , namely the training sample \mathbf{x}_ℓ , for parameter estimation instead of using it for model selection. On the other side, we want as much data as possible for the computation of the Bayes factor since the overall goal is to make a comparison between two models. This is why the minimal training sample is preferable.

The minimal training sample is usually of the same size as the number of parameters in the model. But there are exceptions to this rule, if for example the prior distribution is proper to some parameters then the minimal training sample size may be less than the number of parameters in the model (see, Berger and Pericchi (1996)). As an example, suppose we have a joint prior distribution of two parameters that is improper. Then only two observations from the data set should suffice as a training sample. When the sample size is n , then there are $n(n-1)/2$ combinations of choice to select two observations from \mathbf{x} . One should pick every combination to compute the IBF, which implies $n(n-1)/2$ computations of the IBF. Then the conclusions are drawn based on a summary of the differently computed IBFs, such as the average IBF or the median IBF.

Let $m_i^N(\mathbf{x}_\ell)$ be the marginal distribution of \mathbf{x}_ℓ computed under the noninformative prior $\pi_i^N(\boldsymbol{\theta}_i)$ and let $m_i^N(\mathbf{x}_{(\ell)}|\mathbf{x}_\ell)$ denote the conditional distribution of $\mathbf{x}_{(\ell)}$ given \mathbf{x}_ℓ . Then the intrinsic Bayes factor computed for the sample $\mathbf{x}_{(\ell)}$ conditioned on the training sample \mathbf{x}_ℓ is given by

$$B_{ji}^I(\mathbf{x}_{(\ell)}|\mathbf{x}_\ell) = \frac{m_j^N(\mathbf{x}_{(\ell)}|\mathbf{x}_\ell)}{m_i^N(\mathbf{x}_{(\ell)}|\mathbf{x}_\ell)} = \frac{\int f_j(\mathbf{x}_{(\ell)}|\boldsymbol{\theta}_j, \mathbf{x}_\ell)\pi_j^N(\boldsymbol{\theta}_j|\mathbf{x}_\ell)d\boldsymbol{\theta}_j}{\int f_i(\mathbf{x}_{(\ell)}|\boldsymbol{\theta}_i, \mathbf{x}_\ell)\pi_i^N(\boldsymbol{\theta}_i|\mathbf{x}_\ell)d\boldsymbol{\theta}_i},$$

which can also be rewritten as

$$\begin{aligned} B_{ji}^I(\mathbf{x}_{(\ell)}|\mathbf{x}_\ell) &= \frac{m_j^N(\mathbf{x}_{(\ell)}, \mathbf{x}_\ell)}{m_j^N(\mathbf{x}_\ell)} \bigg/ \frac{m_i^N(\mathbf{x}_{(\ell)}, \mathbf{x}_\ell)}{m_i^N(\mathbf{x}_\ell)} \\ &= \frac{m_j^N(\mathbf{x})}{m_j^N(\mathbf{x}_\ell)} \bigg/ \frac{m_i^N(\mathbf{x})}{m_i^N(\mathbf{x}_\ell)} = \frac{m_j^N(\mathbf{x})}{m_i^N(\mathbf{x})} \times \frac{m_i^N(\mathbf{x}_\ell)}{m_j^N(\mathbf{x}_\ell)} = B_{ji}^N(\mathbf{x}) \times B_{ij}^N(\mathbf{x}_\ell). \end{aligned}$$

Recall that the challenge with the conventional Bayes factor was related to improper prior distributions. For two models M_j and M_i with likelihoods $f_j(\mathbf{x}|\boldsymbol{\theta}_j)$ and $f_i(\mathbf{x}|\boldsymbol{\theta}_i)$ and with employed improper priors $\pi_j^N(\boldsymbol{\theta}_j) = c_j h_j(\boldsymbol{\theta}_j)$ and $\pi_i^N(\boldsymbol{\theta}_i) = c_i h_i(\boldsymbol{\theta}_i)$, the IBF of M_j and M_i is given by

$$\begin{aligned} B_{ji}^I(\mathbf{x}_{(\ell)}|\mathbf{x}_\ell) &= B_{ji}^N(\mathbf{x}) \times B_{ij}^N(\mathbf{x}_\ell) \\ &= \frac{c_j \int f_j(\mathbf{x}|\boldsymbol{\theta}_j)h_j(\boldsymbol{\theta}_j)d\boldsymbol{\theta}_j}{c_i \int f_i(\mathbf{x}|\boldsymbol{\theta}_i)h_i(\boldsymbol{\theta}_i)d\boldsymbol{\theta}_i} \times \frac{c_i \int f_i(\mathbf{x}_\ell|\boldsymbol{\theta}_i)h_i(\boldsymbol{\theta}_i)d\boldsymbol{\theta}_i}{c_j \int f_j(\mathbf{x}_\ell|\boldsymbol{\theta}_j)h_j(\boldsymbol{\theta}_j)d\boldsymbol{\theta}_j}. \end{aligned}$$

The important point is that the arbitrary constants of proportionality c_j and c_i will cancel in the IBF (see, O'Hagan (1995)). Hence the IBF does not depend on anything arbitrary or subjective and can therefore be used for an objective Bayesian model selection.

We summarize this subsection by saying that a noninformative prior distribution is used for an objective approach to Bayesian model selection. The IBF is a method in which the noninformative

improper prior $\pi_i^N(\boldsymbol{\theta}_i)$ is transformed to the proper posterior $\pi_i^N(\boldsymbol{\theta}_i|\mathbf{x}_\ell)$ by the use of a minimal training sample \mathbf{x}_ℓ , while the rest of the data $\mathbf{x}_{(\ell)}$ is employed for model selection resulting in the IBF. The IBF measures the odds in favor of M_j against M_i based on evidence in the data, without the arbitrariness of the constants c_j and c_i .

3 Models for dark uncertainty

In this section we will establish all theoretical results that are needed to compute the IBF for the location-scale model and the random effects model. Both of these models are used in the determination of physical constants and in the meta-analysis to form a consensus value while accounting for an unexplainable heterogeneity. We first present the location-scale model and derive the results needed for the calculation of the IBF. Then, we treat the random effects model likewise. At the end of this section the IBF used for the comparison of these two models is provided.

3.1 Location-scale model

The location-scale model is related to the Birge method, which is a popular method in physics, chemistry, and metrology for adjusting uncertainties to adapt for external inconsistency (see, Birge (1932), Mohr et al. (2016)). The Birge method is used under the assumption that due to external inconsistency, i.e., heterogeneity, the reported uncertainty for each estimate is understated. The Birge method multiplies each uncertainty by a common factor that is called the Birge ratio which is a sort of averaging of uncertainties. As a result all the uncertainties are adjusted to be uniformly understated and hence mutually consistent. In Bodnar and Elster (2014b) the Birge ratio is studied within a Bayesian framework in relation to the location-scale model.

Let \mathbf{V} be a known positive definite matrix, μ an unknown location parameter and τ_{LS} an unknown scale parameter. Then the location-scale model M_{LS} of the data \mathbf{x} is defined by the following two equations:

$$\mathbf{x} = \mu\mathbf{1} + \boldsymbol{\varepsilon}_{LS} \quad \text{with} \quad \boldsymbol{\varepsilon} \sim N(\mathbf{0}, \sigma_{LS}^2 \mathbf{U}). \quad (1)$$

The location-scale model assumes that the measurement data are obtained from a multivariate normal distribution with the mean $\mu\mathbf{1}$ and the covariance matrix $\tau_{LS}^2 \mathbf{U}$, i.e., $\mathbf{x}|\mu, \tau_{LS}, M_{LS} \sim N(\mu\mathbf{1}, \tau_{LS}^2 \mathbf{U})$, where $\mathbf{1}$ stands for the n -dimensional vector of ones. The positive definite matrix \mathbf{U} contains all the reported uncertainties and covariances of the measurement results. Namely, the diagonals of \mathbf{U} contain the variances u_i^2 of the estimates and the off-diagonal entries contain covariances $\rho_{ij}u_iu_j$, where ρ_{ij} is the correlation between the i^{th} and the j^{th} study. The factor τ_{LS} is an unknown quantity that represents the unexplainable interlaboratory heterogeneity. The overall mean μ is the target parameter in many applications in physics, chemistry and medicine, while τ_{LS} is a nuisance parameter included in the model to capture the heterogeneity. The motivation behind the model application is that the elements in \mathbf{U} can be understated due to the presence of heterogeneity. By multiplying \mathbf{U} by τ_{LS}^2 , the elements in \mathbf{U} then become uniformly adjusted for by the heterogeneity. On the other side, the reported correlations ρ_{ij} become unchanged under this adjustment. The notation $\mathbf{x}|\mu, \tau_{LS}, M_{LS}$ makes it explicit that the data are conditioned on the two parameters μ and τ_{LS} under the location-scale model M_{LS} .

The likelihood function of \mathbf{X} , when the location-scale model is assumed, is given by

$$f(\mathbf{x}|\mu, \tau_{LS}, M_{LS}) = \frac{\tau_{LS}^{-n}}{(2\pi)^{n/2}} \exp\left(-\frac{1}{2\tau_{LS}^2}(\mathbf{x} - \mu\mathbf{1})^T \mathbf{U}^{-1}(\mathbf{x} - \mu\mathbf{1})\right). \quad (2)$$

The Berger & Bernado reference prior has been derived for the general location-scale model in Fernández and Steel (1999) and is given by

$$\pi^N(\tau_{LS}) = \pi^N(\mu, \tau_{LS}) \propto \frac{1}{\tau_{LS}}. \quad (3)$$

The marginal distribution of \mathbf{x} and of the training sample \mathbf{x}_ℓ are derived in Theorem 1 whose proof is given in the appendix (see, Section 7).

Theorem 1. *Let $n > 2$ and let \mathbf{U} be positive definite. Then under the location-scale model (1) and reference prior (3),*

(i) *the marginal distribution of the whole sample is given by*

$$m(\mathbf{x}|M_{LS}) = \frac{\Gamma(\frac{n-1}{2})(\mathbf{x}^T \mathbf{Q} \mathbf{x})^{-\frac{n-1}{2}}}{(\det(\mathbf{U}))^{1/2} 2\pi^{\frac{n-1}{2}} \sqrt{\mathbf{1}^T \mathbf{U}^{-1} \mathbf{1}}}, \quad (4)$$

where

$$\mathbf{Q} = \mathbf{U}^{-1} - \frac{\mathbf{U}^{-1} \mathbf{1} \mathbf{1}^T \mathbf{U}^{-1}}{\mathbf{1}^T \mathbf{U}^{-1} \mathbf{1}} \quad (5)$$

(ii) *The size of a minimal training sample \mathbf{x}_ℓ is given by $m = 2$, i.e., $\mathbf{x}_\ell = \{x_i, x_j\}$, where $x_i, x_j \in \mathbf{x}$ and $i \neq j$. Moreover, the marginal distribution of the training sample is given by*

$$m(\mathbf{x}_\ell|M_{LS}) = \frac{1}{2\sqrt{(\det(\mathbf{U}_\ell))(\mathbf{x}_\ell^T \mathbf{Q}_\ell \mathbf{x}_\ell)(\mathbf{1}_2^T \mathbf{U}_\ell^{-1} \mathbf{1}_2)}}, \quad (6)$$

where \mathbf{U}_ℓ is obtained from \mathbf{U} by taking its elements lying on the intersections of the ℓ rows and ℓ columns,

$$\mathbf{Q}_\ell = \mathbf{U}_\ell^{-1} - \frac{\mathbf{U}_\ell^{-1} \mathbf{1}_2 \mathbf{1}_2^T \mathbf{U}_\ell^{-1}}{\mathbf{1}_2^T \mathbf{U}_\ell^{-1} \mathbf{1}_2} \quad \text{with} \quad \mathbf{1}_2 = (1, 1)^T. \quad (7)$$

The results of Theorem 1 provide all quantities which are need for the computation of the IBF as shown in Section 3.3.

3.2 Random effects model

The random effects model is a classical model that has been studied from both frequentist statistics (Cochran (1937), Cochran (1954), Yates and Cochran (1938), Rao (1997), Searle et al. (2006)) and Bayesian statistics (Hill (1965), Tiao and Tan (1965), Browne and Draper (2006), Gelman (2006), Bodnar et al. (2016b)). In metrology it has been considered in Kacker (2004), Toman et al. (2012), while it is one of the mostly used in performing meta-analyses in medicine (see, Lambert et al. (2005), Turner et al. (2015), Veroniki et al. (2019)).

The random effects model M_{RE} is defined by

$$\mathbf{x} = \mu\mathbf{1} + \boldsymbol{\lambda}_{RE} + \boldsymbol{\varepsilon}_{RE} \quad \text{with} \quad \boldsymbol{\lambda}_{RE} \sim N(\mathbf{0}, \tau_{RE}^2 \mathbf{I}) \quad \text{and} \quad \boldsymbol{\varepsilon}_{RE} \sim N(\mathbf{0}, \mathbf{U}). \quad (8)$$

Based on the above presentation we get that the random vector \mathbf{x} is multivariate normally distributed, i.e., $\mathbf{x}|\mu, \tau_{RE}, M_{RE} \sim N(\mu\mathbf{1}, \mathbf{U} + \tau_{RE}^2\mathbf{I})$. In the random effects model an adjustment for the heterogeneity is made to \mathbf{U} by adding a common term τ_{RE}^2 to every element in the diagonal of \mathbf{U} , where σ_{RE}^2 represents the unexplainable interlaboratory heterogeneity. Since only the diagonals of \mathbf{U} are modified by τ_{RE}^2 , the variances u_i^2 are adjusted for by the heterogeneity while the covariances in \mathbf{U} are left unaltered.

Under the assumption of the random effects model the likelihood function is expressed as

$$f(\mathbf{x}|\mu, \tau_{RE}, M_{RE}) = \frac{(\det(\mathbf{U} + \tau_{RE}^2\mathbf{I}))^{-\frac{1}{2}}}{(2\pi)^{n/2}} \exp\left(-\frac{1}{2}(\mathbf{x} - \mu\mathbf{1})^T(\mathbf{U} + \tau_{RE}^2\mathbf{I})^{-1}(\mathbf{x} - \mu\mathbf{1})\right).$$

The Berger & Bernado reference prior has been derived in Bodnar et al. (2016b) and it is given by

$$\pi^N(\tau_{RE}) = \pi^N(\mu, \tau_{RE}) \propto \sqrt{\tau_{RE}^2 \cdot \text{tr}((\mathbf{U} + \tau_{RE}^2\mathbf{I})^{-2})}. \quad (9)$$

It has been proven in Bodnar et al. (2016b, p.32) that $\pi^N(\mu, \tau_{RE}|\mathbf{x})$ is proper for the random effects model and the Berger and Bernado reference prior, if $n > 1$. This leads to the conclusion that the minimal training sample size is equal to $m = 2$. Finally, the marginal distribution of \mathbf{x} and of the training sample \mathbf{x}_ℓ are presented in Theorem 2.

Theorem 2. *Let $n > 2$ and let \mathbf{U} be positive definite. Then under the random effects model (8) and reference prior (9),*

(i) *the marginal distribution of the whole sample is given by*

$$m(\mathbf{x}|M_{RE}) = \int_0^\infty \frac{(2\pi)^{-\frac{n-1}{2}} (\det(\mathbf{U} + \tau_{RE}^2\mathbf{I}))^{-1/2}}{\sqrt{\mathbf{1}^T(\mathbf{U} + \tau_{RE}^2\mathbf{I})^{-1}\mathbf{1}}} \exp\left(-\frac{1}{2}\mathbf{x}^T\mathbf{Q}(\tau_{RE}^2)\mathbf{x}\right) \pi^N(\tau_{RE}) d\tau_{RE}, \quad (10)$$

where

$$\mathbf{Q}(\tau_{RE}^2) = (\mathbf{U} + \tau_{RE}^2\mathbf{I})^{-1} - \frac{(\mathbf{U} + \tau_{RE}^2\mathbf{I})^{-1}\mathbf{1}\mathbf{1}^T(\mathbf{U} + \tau_{RE}^2\mathbf{I})^{-1}}{\mathbf{1}^T(\mathbf{U} + \tau_{RE}^2\mathbf{I})^{-1}\mathbf{1}}. \quad (11)$$

(ii) *The size of a minimal training sample \mathbf{x}_ℓ is given by $m = 2$, i.e., $\mathbf{x}_\ell = \{x_i, x_j\}$, where $x_i, x_j \in \mathbf{x}$ and $i \neq j$. Moreover, the marginal distribution of the training sample is given by*

$$m(\mathbf{x}_\ell|M_{RE}) = \int_0^\infty \frac{(2\pi)^{-\frac{1}{2}} (\det(\mathbf{U}_\ell + \tau_{RE}^2\mathbf{I}))^{-1/2}}{\sqrt{\mathbf{1}_2^T(\mathbf{U}_\ell + \tau_{RE}^2\mathbf{I})^{-1}\mathbf{1}_2}} \exp\left(-\frac{1}{2}\mathbf{x}_\ell^T\mathbf{Q}_\ell(\tau_{RE}^2)\mathbf{x}_\ell\right) \pi^N(\tau_{RE}) d\tau_{RE}, \quad (12)$$

where \mathbf{U}_ℓ is obtained from \mathbf{U} by taking its elements lying on the intersections of the ℓ rows and ℓ columns, and

$$\mathbf{Q}_\ell(\tau_{RE}^2) = (\mathbf{U}_\ell + \tau_{RE}^2\mathbf{I})^{-1} - \frac{(\mathbf{U}_\ell + \tau_{RE}^2\mathbf{I})^{-1}\mathbf{1}_2\mathbf{1}_2^T(\mathbf{U}_\ell + \tau_{RE}^2\mathbf{I})^{-1}}{\mathbf{1}_2^T(\mathbf{U}_\ell + \tau_{RE}^2\mathbf{I})^{-1}\mathbf{1}_2} \quad \text{with } \mathbf{1}_2 = (1, 1)^T. \quad (13)$$

The proof of Theorem 2 is given in the appendix (see, Section 7). Both the marginal distributions of the whole sample and of the training sample are present as a one-dimensional integral which cannot be derived analytically. On the other side, they can be computed with a high precision by numerical integration, for example, by using the Simpson rule (see, Givens and Hoeting (2012)).

Since the range of τ_{RE} is from 0 to $+\infty$, we make a transformation under the integrals in (10) and (12) following Bodnar et al. (2020), defined by $\tau_{RE} = \tan(\omega)$ with the Jacobian equal to $|\frac{d}{d\omega}\tan(\omega)| = 1/\cos(\omega)^2$. It is a one-to-one map of the interval $\omega \in (0, \pi/2)$ into $\tau_{RE} \in (0, \infty)$. This allows us to compute the integral over the bounded range $\omega \in (0, \pi/2)$ instead over the unbounded range $\tau_{RE} \in (0, \infty)$. In the case of (10) we then get

$$m(\mathbf{x}|M_{RE}) = \int_0^{\pi/2} \frac{(2\pi)^{-\frac{n-1}{2}} (\det(\mathbf{U} + \tan^2(\omega)\mathbf{I}))^{-1/2} \exp\left(-\frac{1}{2}\mathbf{x}^T\mathbf{Q}(\tan^2(\omega))\mathbf{x}\right)}{\sqrt{\mathbf{1}^T(\mathbf{U} + \tan^2(\omega)\mathbf{I})^{-1}\mathbf{1}} \tan(\omega)\cos^2(\omega)} d\omega,$$

with $\mathbf{Q}(\tan^2(\omega))$ defined in (11). A similar transformation is also used in the computation of the integral in (12).

3.3 Location-scale model versus random effects model

The difference between the location-scale model and the random effects model is how they take into account for the heterogeneity which arise when the results of several studies are combined together. The choice stands between letting the heterogeneity be modeled as an multiplicative correction factor (location-scale model) or as an additive correction term (random effects model). In order to make a selection between the location-scale model and the random effects model we opt for the application of the IBF presented in Section 2.1 with the marginal distributions of the whole sample and of the training sample as derived in Theorems 1 and 2.

The IBF for comparing the random effects model (M_{RE}) to the location-scale model (M_{LS}) and the training sample \mathbf{x}_ℓ is given by

$$B_{M_{RE}M_{LS}}^I(\mathbf{x}_{(\ell)}|\mathbf{x}_\ell) = B_{M_{RE}M_{LS}}^N(\mathbf{x}) \times B_{M_{LS}M_{RE}}^N(\mathbf{x}_\ell) = \frac{m(\mathbf{x}|M_{RE})}{m(\mathbf{x}|M_{LS})} \times \frac{m(\mathbf{x}_\ell|M_{LS})}{m(\mathbf{x}_\ell|M_{RE})}, \quad (14)$$

where $m(\mathbf{x}|M_{RE})$, $m(\mathbf{x}|M_{LS})$, $m(\mathbf{x}_\ell|M_{LS})$, and $m(\mathbf{x}_\ell|M_{RE})$ are given in (10), (4), (6), and (12), respectively. The value of $B_{M_{RE}M_{LS}}^I(\mathbf{x}_{(\ell)}|\mathbf{x}_\ell)$ larger than one indicates that the random effects model is preferable, while the inequality $B_{M_{RE}M_{LS}}^I(\mathbf{x}_{(\ell)}|\mathbf{x}_\ell) < 1$ suggests the application of the location-scale model.

Both the location-scale model and the random effects model have been shown to have a minimal training sample size of $m = 2$ (see, Theorems 1 and 2). With a total sample size of n , we have a number of $n(n-1)/2$ combinations to select two observations out of n . Let $\mathcal{X}_\ell = (\mathbf{x}_\ell^1, \mathbf{x}_\ell^2, \dots, \mathbf{x}_\ell^{l-1}, \mathbf{x}_\ell^l)$ be the set of training samples, there are $L = n(n-1)/2$ number of elements in \mathcal{X}_ℓ . The IBF (14) is computed for every such possible selection and is aggregated over the possible training samples by computing the average or the median. The reason is that the mean and median of the IBF over \mathcal{X}_ℓ has increased stability in comparison with the IBF of an arbitrary \mathbf{x}_ℓ^i . If the sample size n is either too small (too slight stability improvement) or too large (too long computing time), it is then possible to use the expected mean discussed in Berger and Pericchi (1996, p.113-114).

Berger and Pericchi (2001, p.149) noted that it is recommendable to put the more "complex" model in the numerator of (14), when the average of the IBF is computed over the training samples. One of the reasons is that some large values of the IBF computed for some training samples might dominate in the resulting value of the average IBF, although most of the IBFs are close to zero. In order to symmetrize the impact of large and small values of the IBF computed for each of the training samples, the logarithmic transformation is used before calculating the average IBF and the median

IBF. It leads to the following formulas of the average IBF and the median IBF given by

$$aB_{MREMLS}^I = \frac{1}{L} \sum_{\ell} \log (B_{MREMLS}^I(\mathbf{x}(\ell)|\mathbf{x}_{\ell})) \quad (15)$$

and

$$mB_{MREMLS}^I = \text{median} (\log (B_{MREMLS}^I(\mathbf{x}(\ell)|\mathbf{x}_{\ell}))), \quad (16)$$

respectively.

Besides that, we also computed the empirical probability of the random effect model to be preferable which is expressed as

$$epB_{MREMLS}^I = \frac{1}{L} \sum_{\ell} \mathbb{1}_{(0,\infty)} (\log (B_{MREMLS}^I(\mathbf{x}(\ell)|\mathbf{x}_{\ell}))), \quad (17)$$

where $\mathbb{1}_{\mathcal{A}}(\cdot)$ is the indicator function of set \mathcal{A} .

Based on the computed values in (15), (16), and (17), one prefer the random effects model to the location-scale model if $aB_{MREMLS}^I > 0$, $mB_{MREMLS}^I > 0$, or $epB_{MREMLS}^I > 0.5$ depending on the selected criterium. Otherwise, the location-scale model is preferable.

4 Simulation study

In this section we investigate the performance of the Bayesian model selection based on the intrinsic Bayes factors described in Section 3.3 by drawing samples from the location-scale model and the random effects model, respectively. By doing so we will check whether the model selection based on the considered IBFs leads to the model from which the data were generated and study the impact of the sample size on the decision.

The following two simulation scenarios are considered:

- **Scenario 1:** to draw a sample from the location-scale model $\mathbf{x} = \mu\mathbf{1} + \boldsymbol{\varepsilon}_{LS}$ where $\boldsymbol{\varepsilon}_{LS} \sim N(\mathbf{0}, \tau_{LS}^2 \mathbf{U})$;
- **Scenario 2:** to draw a sample from the random effects model $\mathbf{x} = \mu\mathbf{1} + \boldsymbol{\lambda}_{RE} + \boldsymbol{\varepsilon}_{RE}$ where $\boldsymbol{\varepsilon}_{RE} \sim N(\mathbf{0}, \mathbf{U})$ and $\boldsymbol{\lambda}_{RE} \sim N(\mathbf{0}, \tau_{RE}^2 \mathbf{I})$.

In both scenarios we set $\mu = 0$ and consider several sample sizes $n \in \{5, 10, 15, 20\}$. The square roots of the diagonal elements of the matrix $\mathbf{U} = (u_{ij})_{i,j=1,\dots,n}$ are drawn from the uniform distribution on $[0, 1]$, while its nondiagonal elements of \mathbf{U} are set to $u_{ij} = r^{|i-j|} \sqrt{u_{ii}} \sqrt{u_{jj}}$ for $i, j \in 1, \dots, n$ and $i \neq j$ with $r \in \{-0.8, -0.4, 0, 0.4, 0.8\}$. Several values of τ_{LS} and τ_{RE} are considered, namely $\tau_{LS} \in \{1.0, 1.2, 1.5, 2.0, 2.5, 3.0\}$ and $\tau_{RE} \in \{0.0, 0.25, 0.5, 1.0, 1.5, 2.0\}$. The results in Figures 2 to 7 are based on 10000 independent repetitions. For $\tau_{LS} = 1$ and $\tau_{RE} = 0$, the two models coincide and they both correspond to the case when the dark uncertainty is absent.

Figures 2 to 4 present the values of the average IBF, the median IBF, and the empirical probability IBF defined in (15), (16), and (17), respectively, and computed for the data generated from the location-scale model (Scenario 1). Similar values obtained under Scenario 2 where the data were drawn from the random effects model are depicted in Figures 5 to 7. In almost all of the considered cases we observe that the average IBF and the median IBF are negative as well as the empirical

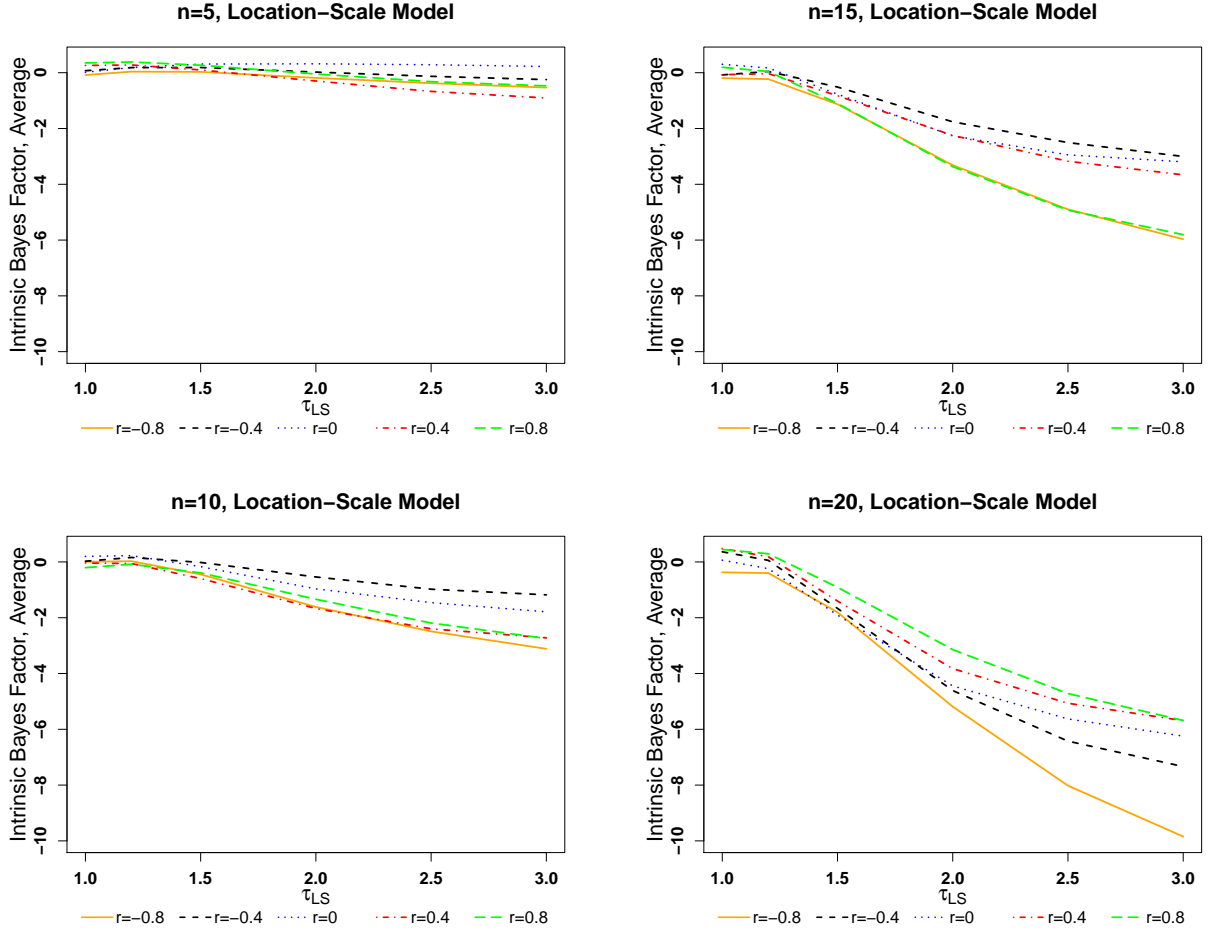


Figure 2: Average intrinsic Bayes factor (15) for comparing the random effects model to the location-scale model as a function of τ_{LS} when the reference prior is employed. We set $n \in \{5, 10, 15, 20\}$ and $r \in \{-0.8, -0.4, 0, 0.4, 0.8\}$. The data were drawn from the location-scale model (see, Scenario 1).

probability IBF is smaller than 0.5 when the data were generated from the location-scale model, and they are positive and the empirical probability IBF is larger than 0.5 when the data were drawn from the random effects model, thus supporting the model selection based on the IBF factors defined in Section 3.3. Some minor deviations from this observation are present only when $n = 5$, the data were simulated from the location-scale model, and the values of τ_{LS} are not large for $r \neq 0$. Interestingly, when $n = 5$ and $r = 0.0$, then the random effects model is preferred independently whether the data were generated following Scenario 1 or Scenario 2.

In general, we conclude that the model selection with intrinsic Bayes factor detects considerably often the random effects model when it is the true model than the location-scale model when it is the true model. This finding is in line with the results of Bodnar et al. (2016a), who showed that the random effects model is more robust for the model misspecifications. As the sample size increases the performance of the three considered model selection criteria based on the IBF improves. The average IBF and the median IBF become larger in the absolute values, while the empirical probability IBF is close to one for the Scenario 2 and close to 0 for Scenario 1. Already for $n = 10$, the values of Figure 7 indicate that the random effects model is correctly chosen in almost all of the considered values

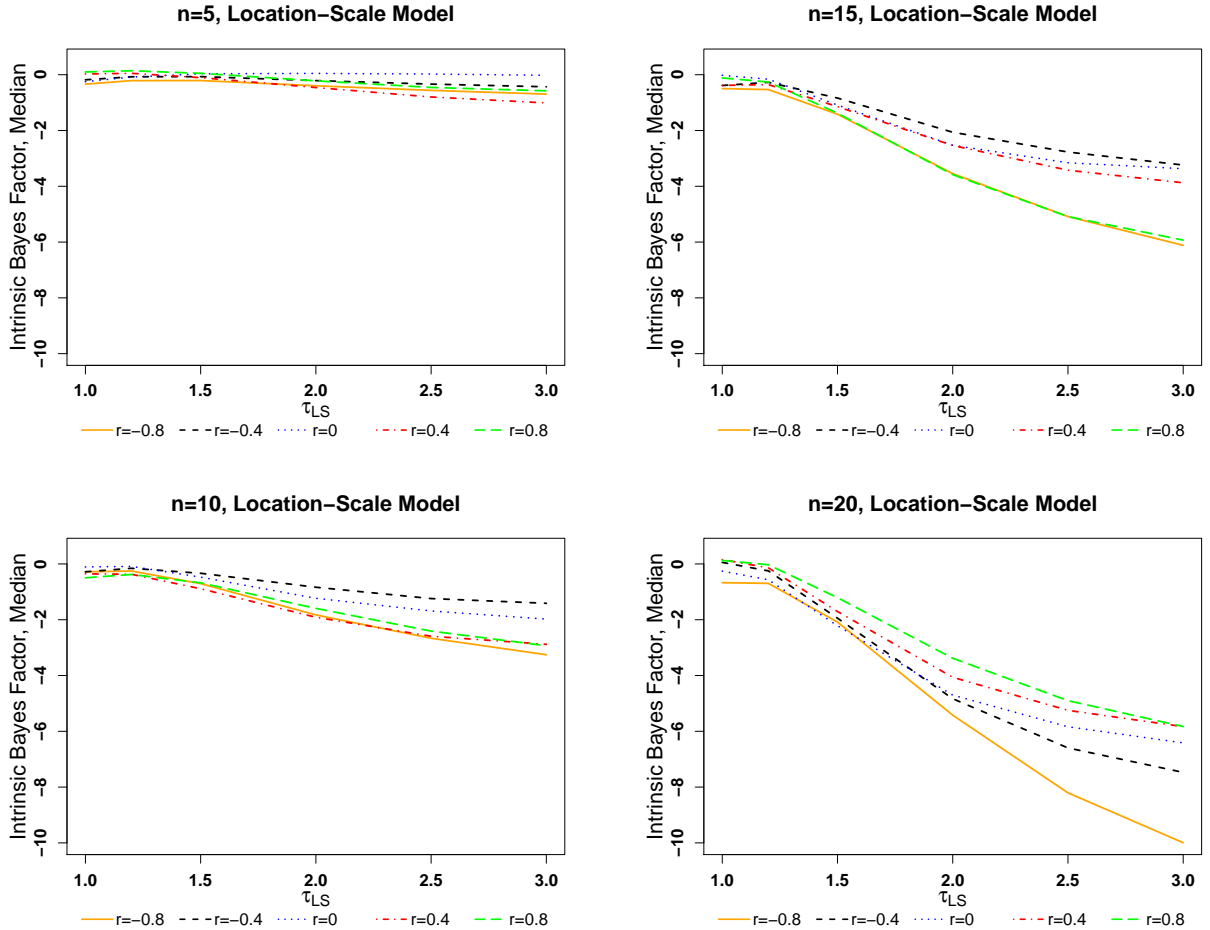


Figure 3: Median intrinsic Bayes factor (16) for comparing the random effects model to the location-scale model as a function of τ_{LS} when the reference prior is employed. We set $n \in \{5, 10, 15, 20\}$ and $r \in \{-0.8, -0.4, 0, 0.4, 0.8\}$. The data were drawn from the location-scale model (see, Scenario 1).

when $r \in \{-0.8, -0.4, 0.8\}$ and in 80% for $r \in \{0, 0.4\}$, while the probability of correctly specifying the location-scale model is between 70% and 80% being slightly smaller for $r = -0.4$. The results for $n = 15$ and $n = 20$ are even more stronger. For example, the random effects model is chosen with probability larger 0.9 in both cases $r = 0$ and $r = 0.4$ for all considered values $\tau_{RE} > 0$ (cf., Figure 7). Finally, we note that only a minor impact of the correlation coefficient r is present on the computed values of the intrinsic Bayes factors.

5 Modeling dark uncertainty in the measurements of the Newtonian constant of gravitation

In the year 1687 Newton published his famous *principia* in which he presented his thesis on the law of general gravitation. Newton proposed that the force that cause an apple to fall from a tree is the same kind of force that keep the moon to orbit the earth, this would be the force of gravitational attraction. In most textbooks in physics this law is written by an equation $F = G \frac{m_1 m_2}{r^2}$. The

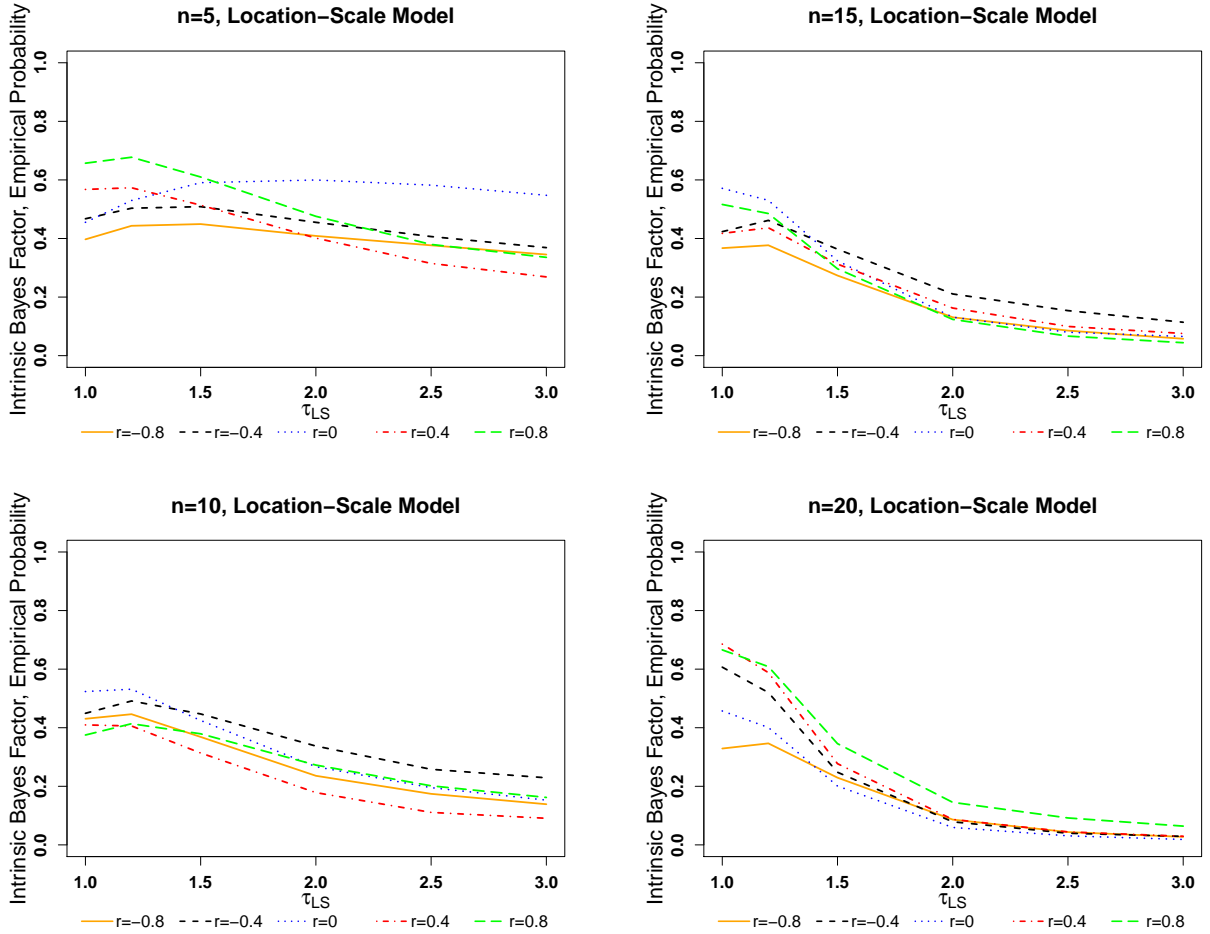


Figure 4: Empirical probability intrinsic Bayes factor (17) for comparing the random effects model to the location-scale model as a function of τ_{LS} when the reference prior is employed. We set $n \in \{5, 10, 15, 20\}$ and $r \in \{-0.8, -0.4, 0, 0.4, 0.8\}$. The data were drawn from the location-scale model (see, Scenario 1).

constant of proportionality, G , is called the general constant of gravitation of the Newtonian constant of gravitation, and it is a natural constant, i.e., this constant is the same throughout the whole universe. It determines the strength of the gravitational force, given mass and distance. If we imagine two objects being put out in space far away from any stars and planets at a distance of 1 m from each other and they both have the mass 1 kg, then the objects exert a gravitational force on each other by exactly $F = G \approx 0.000\,000\,000\,066\,7\text{ N} = 6.67 \cdot 10^{-11}\text{ N}$.

Sixteen measurements of the Newtonian constant of gravitation together with their uncertainties are provided in Table 1 and are shown in Figure 1, from which it might be concluded about the presence of dark uncertainty. For capturing the effect of heterogeneity, one can use the location-scale model or the random effects model, which have already been applied for these purposes (Mohr et al. (2016), Bodnar et al. (2020)).

In order to make a preference for one of the two models, we assign a reference prior to the parameters of two models and perform the Bayesian model selection based on the intrinsic Bayesian factor. The application of a non-informative reference prior is motivated by the absence of information about the parameters of the two models which can be used to determine an informative prior. Using that the size

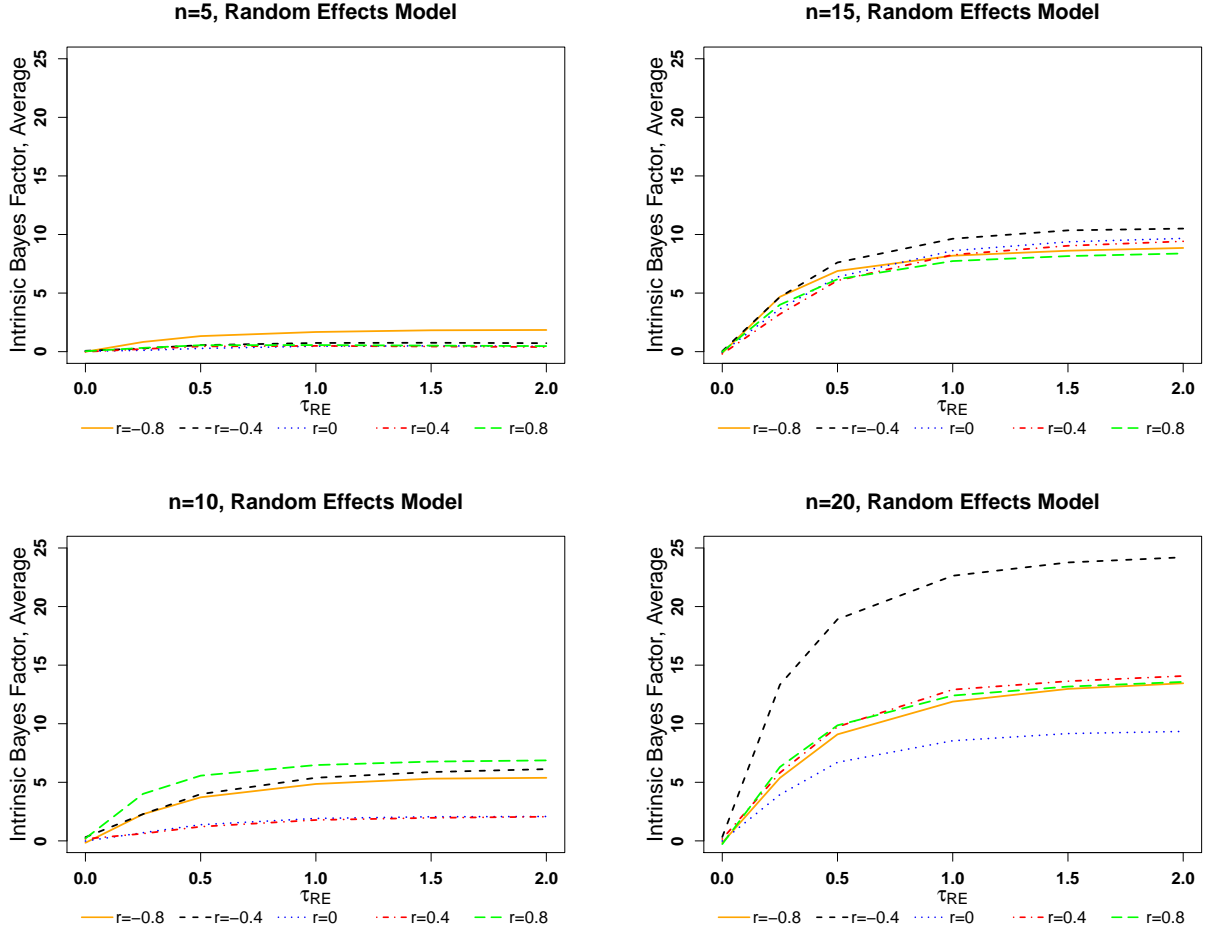


Figure 5: Average intrinsic Bayes factor (15) for comparing the random effects model to the location-scale model as a function of τ_{RE} when the reference prior is employed. We set $n \in \{5, 10, 15, 20\}$ and $r \in \{-0.8, -0.4, 0, 0.4, 0.8\}$. The data were drawn from the random effects model (see, Scenario 2).

of the minimal training sample is $m = 2$, we computed the intrinsic Bayes factor for all 120 possible specifications of the training sample consisting of two measurement results.

The resulting values of the IBF for comparing the random effects model to the location-scale model are depicted in Figure 8. We observe that in most of the cases the IBF is negative meaning that the location-scale model is preferable. Only for 13 training samples out of 120 possible training samples the random effects model is chosen. This leads to the value of the empirical probability IBF equal to $epB_{M_{RE}M_{LS}}^I = 0.1083$. The other two measures for Bayesian model selection discussed in Section 3.3 are negative and they are given by

$$aB_{M_{RE}M_{LS}}^I = -0.6814 \quad \text{and} \quad mB_{M_{RE}M_{LS}}^I = -0.8777, \quad (18)$$

which support the application of the location-scale model to fit the heterogeneity in the measurements of the Newtonian constant of gravitation.

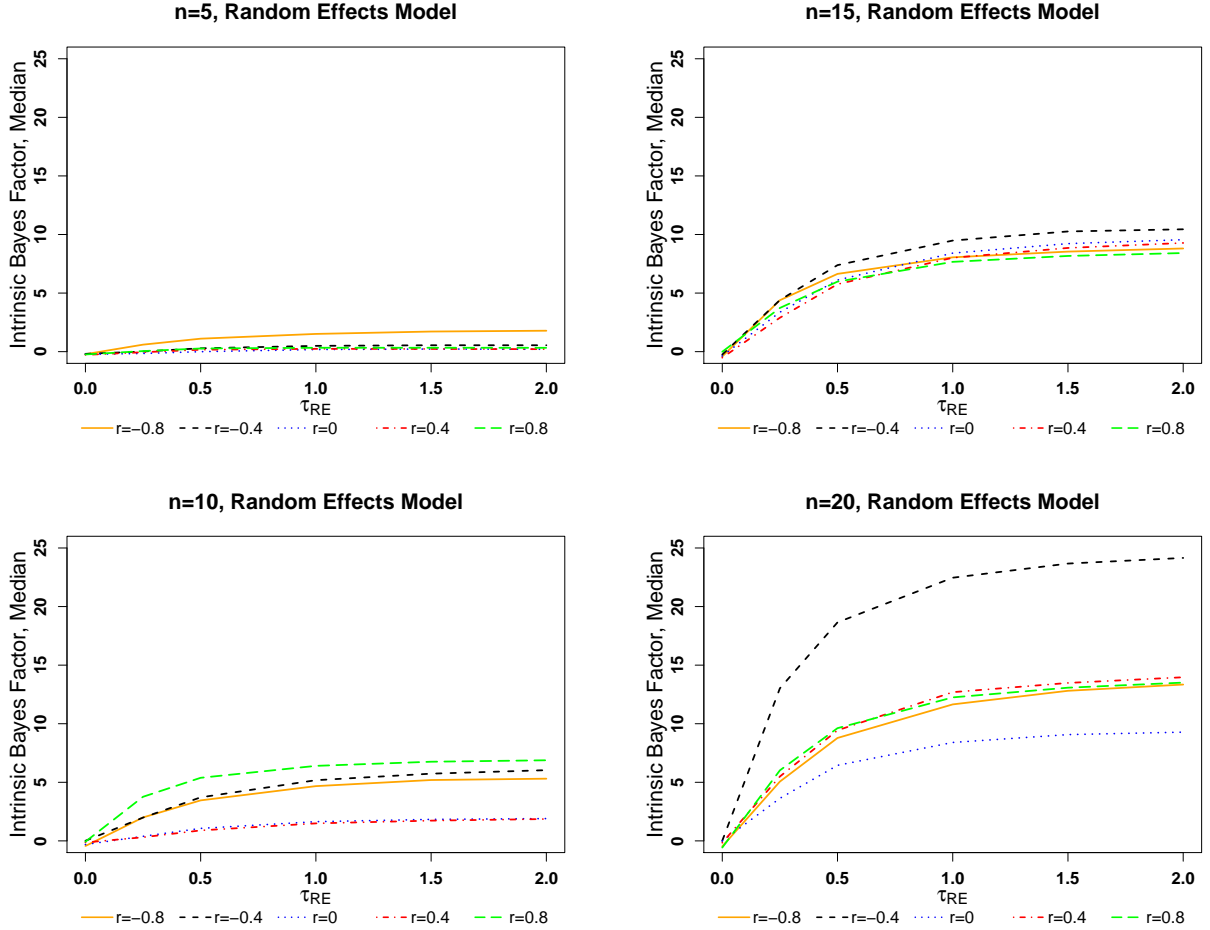


Figure 6: Median intrinsic Bayes factor (16) for comparing the random effects model to the location-scale model as a function of τ_{RE} when the reference prior is employed. We set $n \in \{5, 10, 15, 20\}$ and $r \in \{-0.8, -0.4, 0, 0.4, 0.8\}$. The data were drawn from the random effects model (see, Scenario 2).

6 Summary

In many applications the variability of the individual studies, which are pooled together to determine the overall mean value, cannot be explained by the reported variabilities of each studies. This leads to the conclusion of the presence of heterogeneity, also known as the dark uncertainty. Two mostly used models for the dark uncertainty are the location-scale model and the random effects models. The location-scale model is usually applied in connection to the Birge ratio method for adjusting the measurements of the fundamental constants in physics and chemistry, while the random effects model is the classical tool used for meta-analysis in medicine.

These two models are non-nested and describe the heterogeneity from different perspectives. While the random effects model suggests to adjust the reported variabilities of individual studies by adding a constant to the reported uncertainties, the location-scale model adjusts the underrated individual uncertainties by a multiplicative constant. Since the two approaches are non-nested statistical models, the methods of the frequentist statistics, like the likelihood ratio test cannot be used for choosing the model which provides a better fit to data. In such a situation methods of Bayesian statistics for model selection should be opted. Moreover, in most of applications no additional information is

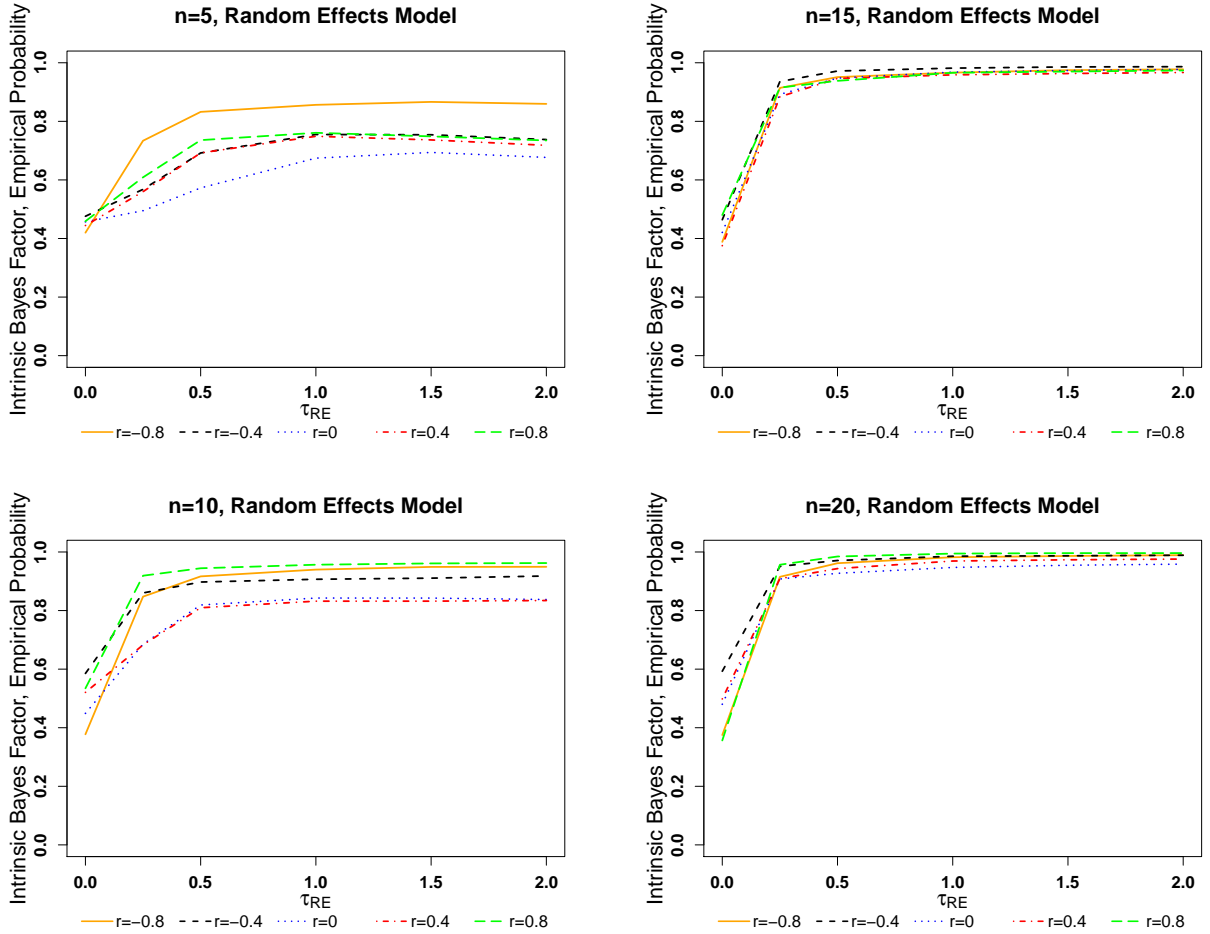


Figure 7: Empirical probability intrinsic Bayes factor (17) for comparing the random effects model to the location-scale model as a function of τ_{RE} when the reference prior is employed. We set $n \in \{5, 10, 15, 20\}$ and $r \in \{-0.8, -0.4, 0, 0.4, 0.8\}$. The data were drawn from the random effects model (see, Scenario 2).

provided for the model parameters and thus noninformative priors should be used in the derivation of Bayesian inference procedures. This has a strong impact on the Bayesian model selection, since the noninformative priors are usually improper, thus leading to the improper marginal distributions of data needed in the computation of the Bayes factor, a rule for choosing one of two competitive models in Bayesian statistics.

The solution to the latter problem was suggested in the seminal paper of Berger and Pericchi (1996), who introduced the intrinsic Bayes factor for improper noninformative priors. Endowing the parameters of the location-scale model and of the random effects model with reference prior (Berger and Bernardo (1992)), we derive the expression of the intrinsic Bayes factor for comparing the random effects model to the location-scale model. In the case of the location-scale model the analytical expression of the marginal distributions of the whole data and of the training data are derived, while one-dimensional integral presentations of the marginal distribution are obtained in the case of the random effects model. These integrals can be computed numerically using Simpson's rule.

The performance of the suggested Bayesian model selection procedure has been investigated within an extensive simulation study. It was found that the procedure can distinguish between two models

Study	Measurement (G/10 ⁻¹¹)	Uncertainty (G/10 ⁻¹¹)
NIST-82	6.67248	0.00043
TR&D-96	6.6729	0.00050
LANL-97	6.67398	0.00070
UWash-00	6.674255	0.000092
BIPM-01	6.67559	0.00027
UWup-02	6.67422	0.00098
MSL-03	6.67387	0.00027
HUST-05	6.67222	0.00087
UZur-06	6.67425	0.00012
HUST-09	6.67349	0.00018
JILA-10	6.67260	0.00025
BIPM-14	6.67554	0.00016
LENS-14	6.67191	0.00099
UCI-14	6.67435	0.00013
HUST-TOS-18	6.674184	0.000078
HUST-AAF-18	6.674484	0.000078

Table 1: Measurement results for the Newtonian constant of gravitation G together with uncertainties (data are from Figure 1 in Bodnar et al. (2020)).

when the data were generated from the random effects model is generated already for small values of heterogeneity parameter and when the sample size is small, like five observations are only present. In contrast, when the data were generated from the location-scale model, then the derived model selection procedure requires larger sample size and larger values of the heterogeneity parameter to detect the true model. Such findings are in line with the previous results documented in Bodnar et al. (2016a), where it is shown that the random effects model is more robust to the model misspecification than the location-scale model. In particular, it was shown numerically that even the data were drawn from the location-scale model, the random effects model is still persistent making a good estimate of the overall mean. That was not the case when the data were generated from the random effects model and the location-scale model is applied.

The derived theoretical findings are applied to the measurement results of the Newtonian constant of gravitation. The results of the empirical study support the application of the location-scale model for the computation of the Newtonian constant of gravitation. Both the average IBF and the median IBF are significantly smaller than zero, while the empirical probability IBF was less than 11% indicating that in majority of the cases related to the specification of the training sample the location-scale model is favored to the random effects model. As such our findings are supportive to the application of the Birge ratio method for the adjustment of the fundamental physical constants as it is currently used in the computation of the CODATA 2018 values of fundamental constants (see, Tiesinga et al. (2021)). Finally, it can be noted that the obtained results only document that the location-scale model is favored compared to the random effects model, but they do not answer the general question what is the best approach for data inconsistency or heterogeneous data.

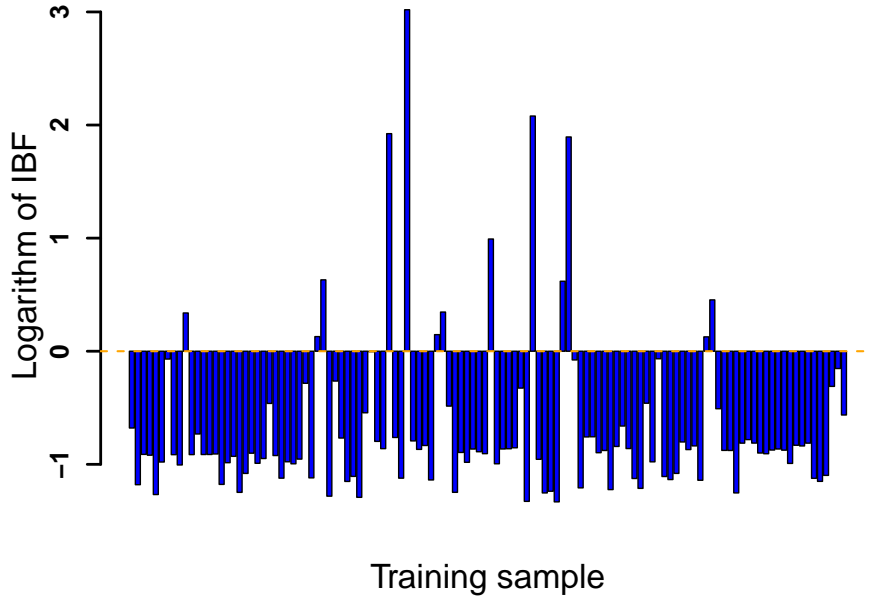


Figure 8: Logarithm of intrinsic Bayes factors computed for each of the $L = 120$ minimal training samples of size $m = 2$ by using data for the Newtonian constant of gravitation from Table 1.

Acknowledgement

This research was partially supported by National Institute of Standards and Technology (NIST) Exchange Visitor Program. The first author is grateful to the Statistical Engineering Division of National Institute of Standards and Technology (NIST) for providing an excellent and inspiring environment for research. Olha Bodnar also acknowledges valuable support from the internal grand (Rörlig resurs) of the Örebro University.

7 Appendix

In this section, the proofs of Theorems 1 and 2 are presented.

Proof of Theorem 1: (i) In the case of the whole data, the marginal distribution is obtained by integration of the parameters μ and τ_{LS} in the joint probability density function $f(\mathbf{x}, \mu, \tau_{LS} | M_{LS})$.

It holds that

$$\begin{aligned}
m(\mathbf{x}|M_{LS}) &= \int_0^\infty \int_{-\infty}^\infty f(\mathbf{x}|\mu, \tau_{LS}, M_{LS}) \pi^N(\mu, \tau_{LS}) d\mu d\tau_{LS} \\
&= \int_0^\infty \int_{-\infty}^\infty \frac{(\det(\mathbf{U}))^{-\frac{1}{2}}}{(2\pi)^{n/2}} \tau_{LS}^{-n} \exp\left(-\frac{(\mathbf{x} - \mu\mathbf{1})^T \mathbf{U}^{-1} (\mathbf{x} - \mu\mathbf{1})}{2\tau_{LS}^2}\right) \frac{1}{\tau_{LS}} d\mu d\tau_{LS} \\
&= \frac{(\det(\mathbf{U}))^{-\frac{1}{2}}}{2(2\pi)^{n/2}} \int_{-\infty}^\infty \left(\int_0^\infty \zeta^{-(\frac{n}{2}+1)} \exp\left(-\frac{(\mathbf{x} - \mu\mathbf{1})^T \mathbf{U}^{-1} (\mathbf{x} - \mu\mathbf{1})}{2\zeta}\right) d\zeta \right) d\mu,
\end{aligned}$$

where the last equality is obtained by making the transformation $\tau_{LS}^2 = \zeta$ with the Jacobian $\frac{1}{2\sqrt{\zeta}}$.

The inner integral with respect to ζ has an integrand that is the kernel of the density function of the inverse gamma distribution $\text{inv-gamma}(n/2, (\mathbf{x} - \mu\mathbf{1})^T \mathbf{U}^{-1} (\mathbf{x} - \mu\mathbf{1})/2)$. Hence,

$$m(\mathbf{x}|M_{LS}) = \frac{(\det(\mathbf{U}))^{-\frac{1}{2}} \Gamma(\frac{n}{2})}{2\pi^{n/2}} \int_{-\infty}^\infty ((\mathbf{x} - \mu\mathbf{1})^T \mathbf{U}^{-1} (\mathbf{x} - \mu\mathbf{1}))^{-n/2} d\mu.$$

Using that

$$(\mathbf{x} - \mu\mathbf{1})^T \mathbf{U}^{-1} (\mathbf{x} - \mu\mathbf{1}) = \mathbf{x}^T \mathbf{Q} \mathbf{x} + \mathbf{1}^T \mathbf{U}^{-1} \mathbf{1} \left(\mu - \frac{\mathbf{1}^T \mathbf{U}^{-1} \mathbf{x}}{\mathbf{1}^T \mathbf{U}^{-1} \mathbf{1}} \right)^2,$$

with \mathbf{Q} defined in (5), we get

$$\begin{aligned}
m(\mathbf{x}|M_{LS}) &= \frac{(\det(\mathbf{U}))^{-\frac{1}{2}} \Gamma(\frac{n}{2})}{2\pi^{n/2}} (\mathbf{x}^T \mathbf{Q} \mathbf{x})^{-n/2} \int_{-\infty}^\infty \left(1 + \frac{\mathbf{1}^T \mathbf{U}^{-1} \mathbf{1}}{\mathbf{x}^T \mathbf{Q} \mathbf{x}} \left(\mu - \frac{\mathbf{1}^T \mathbf{U}^{-1} \mathbf{x}}{\mathbf{1}^T \mathbf{U}^{-1} \mathbf{1}} \right)^2 \right)^{-n/2} d\mu \\
&= \frac{\Gamma(\frac{n-1}{2}) (\mathbf{x}^T \mathbf{Q} \mathbf{x})^{-\frac{n-1}{2}}}{(\det(\mathbf{U}))^{1/2} 2\pi^{\frac{n-1}{2}} \sqrt{\mathbf{1}^T \mathbf{U}^{-1} \mathbf{1}}} \\
&\times \int_{-\infty}^\infty \frac{\Gamma(\frac{n}{2})}{\sqrt{\pi} \Gamma(\frac{n-1}{2})} \sqrt{\frac{\mathbf{1}^T \mathbf{U}^{-1} \mathbf{1}}{\mathbf{x}^T \mathbf{Q} \mathbf{x}}} \left(1 + \frac{1}{n-1} \frac{(n-1) \mathbf{1}^T \mathbf{U}^{-1} \mathbf{1}}{\mathbf{x}^T \mathbf{Q} \mathbf{x}} \left(\mu - \frac{\mathbf{1}^T \mathbf{U}^{-1} \mathbf{x}}{\mathbf{1}^T \mathbf{U}^{-1} \mathbf{1}} \right)^2 \right)^{-n/2} d\mu \\
&= \frac{\Gamma(\frac{n-1}{2}) (\mathbf{x}^T \mathbf{Q} \mathbf{x})^{-\frac{n-1}{2}}}{(\det(\mathbf{U}))^{1/2} 2\pi^{\frac{n-1}{2}} \sqrt{\mathbf{1}^T \mathbf{U}^{-1} \mathbf{1}}},
\end{aligned}$$

where the last equality follows by recognizing the density function of the t -distribution under the integral in the second line.

- (ii) The statement of the second part of the theorem is obtained by following the proof of part (i) and noting that when $m = 1$ then $m(x_i|M_{LS})$ becomes a constant and, thus, $m(x_i|M_{LS})$ is not longer a proper density function. When $m = 2$ we get

$$m(\mathbf{x}_\ell|M_{LS}) = \frac{1}{2\sqrt{(\det(\mathbf{U}_\ell))(\mathbf{x}^T \mathbf{Q}_\ell \mathbf{x})(\mathbf{1}_2^T \mathbf{U}_\ell^{-1} \mathbf{1}_2)}}, \quad (19)$$

where \mathbf{Q}_ℓ is given in (7). Since the last expression is a proper density function and the two elements of \mathbf{x} are arbitrary chosen, the theorem is proved. \square

Proof of Theorem 2: (i) In the case of the whole data the marginal distribution is obtained by integration of the parameters μ and τ_{RE} in the joint probability density function $f(\mathbf{x}, \mu, \tau_{RE} | M_{RE})$ and it is expressed as

$$\begin{aligned} m(\mathbf{x} | M_{RE}) &= \int_0^\infty \int_{-\infty}^\infty f(\mathbf{x} | \mu, \tau_{RE}, M_{RE}) \pi^N(\tau_{RE}) d\mu d\tau_{RE} \\ &= \int_0^\infty \int_{-\infty}^\infty \frac{(\det(\mathbf{U} + \tau_{RE}^2 \mathbf{I}))^{-\frac{1}{2}}}{(2\pi)^{n/2}} \exp\left(-\frac{1}{2}(\mathbf{x} - \mu \mathbf{1})^T (\mathbf{U} + \tau_{RE}^2 \mathbf{I})^{-1} (\mathbf{x} - \mu \mathbf{1})\right) \pi^N(\tau_{RE}) d\mu d\tau_{RE}, \end{aligned}$$

where $\pi^N(\tau_{RE})$ is given in (9).

Using the identity

$$\begin{aligned} &\exp\left(-\frac{1}{2}(\mathbf{x} - \mu \mathbf{1})^T (\mathbf{U} + \tau_{RE}^2 \mathbf{I})^{-1} (\mathbf{x} - \mu \mathbf{1})\right) \\ &= \exp\left(-\frac{1}{2} \mathbf{x}^T \mathbf{Q}(\tau_{RE}^2) \mathbf{x}\right) \exp\left(-\frac{1}{2} \mathbf{1}^T (\mathbf{U} + \tau_{RE}^2 \mathbf{I})^{-1} \mathbf{1} \left(\mu - \frac{\mathbf{1}^T (\mathbf{U} + \tau_{RE}^2 \mathbf{I})^{-1} \mathbf{x}}{\mathbf{1}^T (\mathbf{U} + \tau_{RE}^2 \mathbf{I})^{-1} \mathbf{1}}\right)^2\right), \end{aligned}$$

with $\mathbf{Q}(\tau_{RE}^2)$ defined in (11) and integrating over μ , we get

$$m(\mathbf{x} | M_{RE}) = \int_0^\infty \frac{(\det(\mathbf{U} + \tau_{RE}^2 \mathbf{I}))^{-\frac{1}{2}} \exp\left(-\frac{1}{2} \mathbf{x}^T \mathbf{Q}(\tau_{RE}^2) \mathbf{x}\right)}{(2\pi)^{(n-1)/2} \sqrt{\mathbf{1}^T (\mathbf{U} + \tau_{RE}^2 \mathbf{I})^{-1} \mathbf{1}}} \pi^N(\tau_{RE}) d\tau_{RE},$$

which is the statement of the first part of the theorem.

(ii) Part (ii) of the theorem follows from the proof of the first part. □

References

- Ades, A. E., Lu, G., and Higgins, J. (2005). The interpretation of random-effects meta-analysis in decision models. *Medical Decision Making*, 25(6):646–654.
- Alighanbari, S., Giri, G., Constantin, F. L., Korobov, V., and Schiller, S. (2020). Precise test of quantum electrodynamics and determination of fundamental constants with HD+ ions. *Nature*, 581(7807):152–158.
- Berger, J. and Bernardo, J. M. (1992). On the development of reference priors. In Bernardo, J. M., Berger, J., Dawid, A. P., and Smith, A. F. M., editors, *Bayesian Statistics*, volume 4, pages 35–60. Oxford: University Press.
- Berger, J. O., Bernardo, J. M., and Sun, D. (2009). The formal definition of reference priors. *The Annals of Statistics*, 37(2):905–938.
- Berger, J. O. and Pericchi, L. R. (1996). The intrinsic Bayes factor for model selection and prediction. *Journal of the American Statistical Association*, 91(433):109–122.
- Berger, J. O. and Pericchi, L. R. (2001). Objective Bayesian methods for model selection: Introduction and comparison. In *Model Selection*, pages 135–207. Hayward, CA: Institute of Mathematical Statistics.
- Birge, R. T. (1932). The calculation of errors by the method of the least squares. *Physical Review*, 40(2):207–227.
- Bodnar, O. and Elster, C. (2014a). Analytical derivation of the reference prior by sequential maximization of Shannon’s mutual information in the multi-group parameter case. *Journal of Statistical Planning and Inference*, 147:106–116.

- Bodnar, O. and Elster, C. (2014b). On the adjustment of inconsistent data using the Birge ratio. *Metrologia*, 51(5):516.
- Bodnar, O. and Elster, C. (2020). Assessing laboratory effects in key comparisons with two transfer standards measured in two petals: A Bayesian approach. In *13th International Workshop on Intelligent Statistical Quality Control 2019, IWISQC 2019, 12 August 2019 through 14 August 2019*, pages 1–18. City University of Hong Kong.
- Bodnar, O., Elster, C., Fischer, J., Possolo, A., and Toman, B. (2016a). Evaluation of uncertainty in the adjustment of fundamental constants. *Metrologia*, 53(1):S46.
- Bodnar, O., Link, A., Arendacká, B., Possolo, A., and Elster, C. (2017). Bayesian estimation in random effects meta-analysis using a non-informative prior. *Statistics in Medicine*, 36(2):378–399.
- Bodnar, O., Link, A., and Elster, C. (2016b). Objective Bayesian inference for a generalized marginal random effects model. *Bayesian Analysis*, 11(1):25–45.
- Bodnar, O., Muhumuza, R. N., and Possolo, A. (2020). Bayesian inference for heterogeneity in meta-analysis. *Metrologia*, 57(6):064004.
- Brockwell, S. E. and Gordon, I. R. (2001). A comparison of statistical methods for meta-analysis. *Statistics in Medicine*, 20(6):825–840.
- Browne, W. J. and Draper, D. (2006). A comparison of Bayesian and likelihood-based methods for fitting multilevel models. *Bayesian Analysis*, 1(3):473–514.
- Clarke, B. and Yuan, A. (2004). Partial information reference priors: Derivation and interpretations. *Journal of Statistical Planning and Inference*, 123(2):313–345.
- Cochran, W. G. (1937). Problems arising in the analysis of a series of similar experiments. *Journal of the Royal Statistical Society - Supplement*, 4:102–118.
- Cochran, W. G. (1954). The combination of estimates from different experiments. *Biometrics*, 10:109–129.
- Fernández, C. and Steel, M. F. J. (1999). Reference priors for the general location-scale model. *Statistics & Probability Letters*, 43:377–384.
- Gelman, A. (2006). Prior distributions for variance parameters in hierarchical models. *Bayesian Analysis*, 1:515–533.
- Givens, G. H. and Hoeting, J. A. (2012). *Computational Statistics*, volume 710. John Wiley & Sons.
- Guolo, A. and Varin, C. (2017). Random-effects meta-analysis: The number of studies matters. *Statistical Methods in Medical Research*, 26(3):1500–1518.
- Hardy, R. J. and Thompson, S. G. (1998). Detecting and describing heterogeneity in meta-analysis. *Statistics in Medicine*, 17(8):841–856.
- Higgins, J., Thompson, S. G., and Spiegelhalter, D. J. (2009). A re-evaluation of random-effects meta-analysis. *Journal of the Royal Statistical Society: Ser. A (Statistics in Society)*, 172(1):137–159.
- Hill, B. M. (1965). Inference about variance components in the one-way model. *Journal of the American Statistical Association*, 60:806–825.
- Jeffreys, H. (1946). An invariant form for the prior probability in estimation problems. *Proceedings of the Royal Society A*, 186:453–461.
- Jones, H. E., Ades, A., Sutton, A. J., and Welton, N. J. (2018). Use of a random effects meta-analysis in the design and analysis of a new clinical trial. *Statistics in Medicine*, 37(30):4665–4679.
- Kacker, R. N. (2004). Combining information from interlaboratory evaluations using a random effects model. *Metrologia*, 41:132–136.
- Lambert, P. C., Sutton, A. J., Burton, P. R., Abrams, K. R., and Jones, D. R. (2005). How vague is vague? A simulation study of the impact of the use of vague prior distributions in mcmc using winbugs. *Statistics in Medicine*, 24(15):2401–2428.
- Laplace, P. S. (1812). *Théorie Analytique des Probabilités*. Paris: Courcier.
- Mandel, J. and Paule, R. (1970). Interlaboratory evaluation of a material with unequal numbers of replicates. *Analytical Chemistry*, 42(11):1194–1197.
- Mohr, P. J., Newell, D. B., and Taylor, B. N. (2016). CODATA recommended values of the fundamental physical

- constants: 2014. *Reviews of Modern Physics*, 88(3):035009.
- Newell, D. B., Cabiati, F., Fischer, J., Fujii, K., Karshenboim, S. G., Margolis, H. S., de Mirandes, E., Mohr, P. J., Nez, F., and Pachucki, K. (2018). The CODATA 2017 values of h , e , k , and N_A for the revision of the SI. *Metrologia*, 55(1):L13–L16.
- O’Hagan, A. (1995). Fractional bayes factors for model comparison. *Journal of the Royal Statistical Society: Series B (Methodological)*, 57(1):99–118.
- Rao, P. S. R. S. (1997). *Variance Components Estimation: Mixed Models, Methodologies, and Applications*. Chapman and Hall, London.
- Ruhkin, A. (2003). Two procedures of meta-analysis in clinical trials and interlaboratory studies. *Tatra Mountains Mathematical Publications*, 26(155):155–168.
- Rukhin, A. L. (2013). Estimating heterogeneity variance in meta-analysis. *Journal of the Royal Statistical Society: Ser. B*, 75:451–469.
- Searle, S. R., Casella, G., and Mc Culloch, C. E. (2006). *Variance Components*. John Wiley & Sons, New Jersey.
- Thompson, M. and Ellison, S. L. (2011). Dark uncertainty. *Accreditation and Quality Assurance*, 16(10):483–487.
- Tiao, G. C. and Tan, W. Y. (1965). Bayesian analysis of random-effect models in the analysis of variance. i: Posterior distribution of variance components. *Biometrika*, 52:37–53.
- Tiesinga, E., Mohr, P. J., Newell, D. B., and Taylor, B. N. (2021). CODATA recommended values of the fundamental physical constants: 2018. *Reviews of Modern Physics*, to appear.
- Toman, B., Fischer, J., and Elster, C. (2012). Alternative analyses of measurements of the Planck constant. *Metrologia*, 49(4):567–571.
- Turner, R. M., Jackson, D., Wei, Y., Thompson, S. G., and Higgins, J. (2015). Predictive distributions for between-study heterogeneity and simple methods for their application in Bayesian meta-analysis. *Statistics in Medicine*, 34(6):984–998.
- Veroniki, A. A., Jackson, D., Bender, R., Kuss, O., Langan, D., Higgins, J. P., Knapp, G., and Salanti, G. (2019). Methods to calculate uncertainty in the estimated overall effect size from a random-effects meta-analysis. *Research synthesis methods*, 10(1):23–43.
- Weise, K. and Wöger, W. (2000). Removing model and data non-conformity in measurement evaluation. *Measurement Science and Technology*, 11(12):1649.
- Yates, F. and Cochran, W. G. (1938). The analysis of groups of experiments. *Journal of Agricultural Science*, 28:556–580.