

Nekhili, Ramzi; Sultan, Jahangir

Article

Jump driven risk model performance in cryptocurrency market

International Journal of Financial Studies

Provided in Cooperation with:

MDPI – Multidisciplinary Digital Publishing Institute, Basel

Suggested Citation: Nekhili, Ramzi; Sultan, Jahangir (2020) : Jump driven risk model performance in cryptocurrency market, International Journal of Financial Studies, ISSN 2227-7072, MDPI, Basel, Vol. 8, Iss. 2, pp. 1-18,
<https://doi.org/10.3390/ijfs8020019>

This Version is available at:

<https://hdl.handle.net/10419/257686>

Standard-Nutzungsbedingungen:

Die Dokumente auf EconStor dürfen zu eigenen wissenschaftlichen Zwecken und zum Privatgebrauch gespeichert und kopiert werden.

Sie dürfen die Dokumente nicht für öffentliche oder kommerzielle Zwecke vervielfältigen, öffentlich ausstellen, öffentlich zugänglich machen, vertreiben oder anderweitig nutzen.

Sofern die Verfasser die Dokumente unter Open-Content-Lizenzen (insbesondere CC-Lizenzen) zur Verfügung gestellt haben sollten, gelten abweichend von diesen Nutzungsbedingungen die in der dort genannten Lizenz gewährten Nutzungsrechte.

Terms of use:

Documents in EconStor may be saved and copied for your personal and scholarly purposes.

You are not to copy documents for public or commercial purposes, to exhibit the documents publicly, to make them publicly available on the internet, or to distribute or otherwise use the documents in public.

If the documents have been made available under an Open Content Licence (especially Creative Commons Licences), you may exercise further usage rights as specified in the indicated licence.



<https://creativecommons.org/licenses/by/4.0/>

Article

Jump Driven Risk Model Performance in Cryptocurrency Market

Ramzi Nekhili ^{1,*}  and Jahangir Sultan ²¹ Department of Accounting and Finance, Applied Science University, East Al-Ekir 5055, Bahrain² Department of Finance, Bentley University, Waltham, MA 02452, USA; jsultan@bentley.edu

* Correspondence: ramzi.nekhili@asu.edu.bh; Tel.: +973-39477694

Received: 26 February 2020; Accepted: 27 March 2020; Published: 1 April 2020



Abstract: This paper aims at identifying a validated risk model for the cryptocurrency market. We propose a stochastic volatility model with co-jumps in return and volatility (SVCJ) to highlight the role of jumps in returns and volatility in affecting Value-at-Risk (VaR) and Expected Shortfall (ES) in cryptocurrency market. Validation results based on backtesting show that SVCJ model is superior in terms of statistical accuracy of VaR and ES estimates, compared to alternative models such as TGARCH (Threshold GARCH) volatility and RiskMetrics models. The results imply that for the cryptocurrency market, the best performing model is a stochastic process that accounts for both jumps in returns and volatility.

Keywords: stochastic volatility with co-jumps; threshold GARCH; RiskMetrics; validation; cryptocurrency market

JEL Classification: C22; G11; G12

1. Introduction

Forecasting volatility is pivotal for developing accurate and realistic risk management models that perform well in good times and in bad. An accurate volatility forecast depends on the assumptions made by the analyst and selection of proper statistical models that can provide a parsimonious representation of the stylized features of the data. When risk management fails, the blame is squarely placed on risk models. According to [Bernanke \(2008\)](#), “Those institutions faring better during the recent turmoil generally placed relatively more emphasis on validation, independent review, and other controls for models and similar quantitative techniques. They also continually refined their models and applied a healthy dose of skepticism to model output”. Hence, a crucial task facing a risk manager is to make sure the models are tested, back-tested, and validated to minimize expected losses.

Academics, practitioners, and regulators have commonly used risk models that were deemed sophisticated in terms of forecasting risk. For instance, JPMorgan and Bank of America use historical simulation to estimate their trading risk. Others rely on volatility forecasting models such as GARCH family models, exponentially moving average, JPMorgan’s RiskMetrics, and extreme value theory models. In this respect, academics provided various results of the reality checks of these models and suggested different versions of the GARCH volatility models by alternating between Normal, Student-*t*, and Skewed-*t* distributions in an attempt to better capture tail events and asymmetry of the data generating process (see, for example, [Bauwens and Laurent \(2005\)](#), [Danielsson and Morimoto \(2000\)](#)). Other scholars suggested hybrid models combining, for instance, filtered historical simulation with GARCH models or assuming different error terms in the models. Nevertheless, such models require assumptions about the stochastic processes of the underlying asset prices that are subject to validation

failure either because of misspecification or the latent characteristic of the parameters, especially during economic downturns.

On a more macro level, it is now evident that the importance of risk models remains fundamental for capital requirements as imposed by the Basel regulations. Decision-makers rely on these risk models as long as they have passed some validation criteria adopted by financial institutions and regulatory authorities. Three critical model-failures have been noted in the literature—1992 Deutsche Bank loss of \$500 million, the 1998 collapse of Long Term Capital Management (LTCM), and the 2012 “London Whale”¹ debacle of JPMorgan Chase & Co. For the Deutsche bank loss, the culprit was the assumption of flat volatility to price options and, in the case of the LTCM debacle, the blame was placed on the model’s use of Gaussian copula and the assumption of no contagion (Jorion 2000).² Finally, the 2012 loss of \$6.2 billion, due to a spreadsheet error in calculating Value-at-Risk (VaR) and operational risk at JPMorgan Chase, highlights why it is important to validate risk models.³

In light of some of these historical data, it is fitting that scholars shifted their approach to stochastic volatility risk models, postulating that volatility is driven by its own stochastic process that accounts for jump dynamics in the returns rather than skewness or excess kurtosis. Such an approach, when pitted against other risk models, outperformed both in and out-of-sample backtesting results (see, for example, Maheu and McCrudy (2005), Su and Hung (2011), and Ze-To (2012)). Their results supported a consensus that jumps are causing extreme value in returns and taking them into consideration provides better VaR forecasts for long and short positions at lower and higher VaR levels. Though such models were successfully validated, they accounted for jumps in the return series and not in volatilities. In addition, many of these risk models were validated in a portfolio context, and little has been done with individual assets with a stochastic model that accounts for both jumps in returns and volatilities (see, for example, Eraker et al. (2003)).

The challenge, therefore, is to identify the best risk model that has passed some validation criteria using risk measures such as VaR and Expected Shortfall (ES), which remain the building-block of market risk regulations. One typical means for identification of the best risk forecast model is by analyzing violation ratios, which is better known as backtesting. Although some scholars argue that risk model choice is the least concern for decision-makers (see, for example, Danielsson et al. (2016)), the scenario takes a different path when dealing with individual financial assets and considering economic events affecting financial markets.

Risk validation in any financial asset that trades on organized platforms is critical for national and international regulatory bodies that are entrusted with providing a safe and sound financial environment for financial transactions. To this extent, investor safety is paramount for an assessment of risks of cryptocurrencies so that proper regulatory controls, if needed, can be designed and implemented. The popular media have declared the cryptocurrencies as some of the most volatile assets in the financial market worldwide. Such assertions must be validated using appropriate econometric risk models that incorporate stylized features of the market to understand the evolution of risk and the factors that are responsible for it. Most importantly, the structure of the market, transaction costs, market microstructure, price formation, and the volatility should be studied within an appropriate risk model. For the emerging cryptocurrencies market where governmental oversight and regulatory structure is still evolving, model risk due to wrong assumptions can lead to wrong conclusions and incorrect policy implementation.

Overall, cryptocurrencies have taken place in the financial markets and in portfolio management. They may be useful in risk management and ideal for risk-averse investors in anticipation of negative

¹ The term “London Whale” was based on the enormous size of the bet on credit default swaps made by the London office of the bank’s risk management division.

² In addition, the LTCM model made several critical mistakes, including assuming that returns were normally distributed, and the time period to establish the risk parameters was rather short. See Jorion (2000) for more.

³ Interestingly, JPM CEO Jaime Dimon had initially described the problem as “a tempest in a teapot”.

shocks to the market. They are also considered as investment assets useful for portfolio diversification and hedging against movements in other financial assets such as commodities. To sum up, for an investor trying to manage tail risk in cryptocurrencies, choosing an appropriate model is critical for forecasting volatility.

This paper aims at exclusively identifying a risk model that is valid for the cryptocurrency markets. It also attempts to build up on the consensus that cryptocurrencies exhibit extreme volatility that needs to be properly quantified for risk management purposes. The existing literature suggests that both stochastic volatility and jumps in returns in the equity market are important components of the returns. Hence, we consider theoretical and applied return models that require the specification of a stochastic volatility component. The model that we select accommodates the persistence in volatility, and volatility of a jump to address the unpredictable and large movements in the price process. In essence, our objective is to examine if jumps in returns and volatility can help us predict tail risk and expected shortfall more accurately. Furthermore, it also is important to determine if jumps in returns and volatility can help us accurately predict and manage expected losses from investing in cryptocurrencies. This particular focus on the volatility structure of the cryptocurrency market is incomplete in the literature.

Our risk model validation approach starts with a nonparametric test to detect jumps in the dynamics of the price process in the cryptocurrency market. Next, we introduce the price dynamics as inputs in a stochastic model that allows for jumps in both returns and volatility, as well as their correlation. We call this the Stochastic Volatility with Co-Jumps (SVCJ) model. We further study how such a model could be appropriate for risk measurement and compare its Value-at-Risk and Expected Shortfall predictions with competing models that are frequently applied to financial time series. Backtesting criteria are implemented to test the statistical accuracy of the models, followed by an examination of the statistical significance of the differences between the models.

Our results suggest that no one model universally fits all cryptocurrencies. We find that there are jumps in the returns and volatility of returns in the cryptocurrency market, though jump probability estimates vary across currencies. We find evidence of the leverage effect where volatility has an asymmetric response to good news and bad news. Both the SVCJ and TGARCH models produce accurate forecasts of tail risk and Expected Shortfall (ES) better than the popular RiskMetrics model. Finally, the strongest result in the paper is that the proposed SVCJ model produces lower economic losses than the TGARCH and RiskMetrics models. This implies real savings for an investor for dealing with capital losses for investing in the cryptocurrency market.

The paper proceeds as follows. In Section 2, we discuss the proposed stochastic volatility model with jumps and leverage. In Section 3, we offer empirical results. The final section concludes the paper.

2. Methodology

An understanding of the volatility process of financial assets is necessary for investors to manage risks of investing in financial markets. Equally important is that regulators have a more informed view of the underlying volatility structure of these assets so that appropriate regulatory policies can be designed to attract investors and potential new issuers. To this extent, it is important to examine if assets have time varying volatility, jumps, autocorrelation, extreme risk, and how the volatility process responds to good news and bad news in the markets. These issues have been investigated in the literature individually in a disparate manner when they should be addressed simultaneously in an integrated model to allow interaction among these volatility parameters (see [Ardia et al. \(2019\)](#), [Barivera et al. \(2017\)](#), and [Segnon and Bekiros \(2019\)](#), and references therein). Hence, we adopt a model that can capture quick and persistent movements of the conditional volatility of returns as in [Eraker et al. \(2003\)](#), which was an implementation of the model with jumps in both returns and volatility by [Duffie et al. \(2000\)](#). Such models showed that, with jumps in returns and jumps in stochastic volatility, the performance is better than competing models with different specification of the volatility process. A number of papers have examined equity price models with jumps in returns

and stochastic volatility (see, for example, [Bakshi et al. \(1997\)](#), [Andersen et al. \(2002\)](#), and [Pan \(2002\)](#)) and made it clear that both stochastic volatility and jumps in returns are important components of the time series properties of financial assets.

Let us begin by defining $\log P_t$ as the logarithmic price process with V_t as the stochastic variance. Both processes are assumed to have a continuous path or happen to be discontinuous with the occurrence of at least one jump:

$$\begin{aligned} d\log P_t &= \mu dt + \sqrt{V_t} dW_t^X + J_t^X dZ_t^X \\ dV_t &= \kappa(\theta - V_t)dt + \sigma_V \sqrt{V_t} dW_t^V + J_t^V dZ_t^V, \end{aligned} \quad (1)$$

where the stochastic volatility V_t has parameters κ and θ that are the mean reversion rate and mean reversion level, respectively. W^X and W^V are correlated standard Brownian motions with $\text{Cov}(dW_t^X, dW_t^V) = \rho dt$. $Z_t^X = Z_t^V$ are contemporaneous jump arrivals in both prices and volatility and are assumed to follow a Poisson process with constant intensity λ . σ_V represents the volatility of volatility and measures the variance responsiveness to diffusive volatility shocks.

Because data are observed in discrete time, it is common to use an Euler discretization of the continuous time process in Equation (1). Assuming a time discretization of one day ($dt = 1$) and $X_t = \log P_t - \log P_{t-1}$, the discrete model, labeled SVCJ, becomes:

$$\begin{aligned} X_t &= \mu + \sqrt{V_{t-1}} \epsilon_t^X + J_t^X Z_t^X \\ V_t &= \kappa(\theta - V_{t-1}) + \sigma_V \sqrt{V_{t-1}} \epsilon_t^V + J_t^V Z_t^V \end{aligned} \quad (2)$$

where J_t^X and J_t^V are the correlated jump sizes with $J_t^V \sim \exp(\mu_V)$ and $J_t^X | J_t^V \sim N(\mu_X + \rho_J J_t^V, \sigma_X^2)$, and ϵ_t^X and ϵ_t^V are standard normal random variables with correlation ρ . We note that, when $\rho_J = 0$ and $\mu_V = 0$, the model turns to a stochastic volatility with jumps of [Bates \(1996\)](#), and, when $\rho_J = 0$, $\mu_V = 0$, $\lambda = 0$, $\mu_X = 0$, and $\sigma_X = 0$, the model is a stochastic volatility of [Heston \(1993\)](#).

We use a likelihood-based framework for estimating multivariate jump-diffusion models using the Markov Chain Monte Carlo (MCMC) method. This method is based on Bayesian modeling that requires using a likelihood, a priori distribution, and a posteriori distribution. Prior distributions are required for the initial volatility state, V_0 , and for all parameters governing the dynamics of the volatilities. Moreover, the prior contains information about both the parameters and the structure of the latent processes: the stochastic specifications of the jump sizes, and jump times. As in [Eraker et al. \(2003\)](#), the priors are always consistent with the intuition that jumps are “large” and infrequent. More specifically, we choose a prior that places low probability on the jump sizes being small, say less than one percent, and a prior that places low probability on the daily jump probability being greater than 10 percent. In this paper, we generate results with priors.

Next, the forecastability of the SVCJ model is compared to commonly adopted alternative volatility models within the popular GARCH family. For this and to be in line with the stylized facts that financial time series have leptokurtosis, heavy tail, and autocorrelation, we impose volatility dynamics within the universe of GARCH specifications. We choose the TGARCH specification of [Glosten et al. \(1993\)](#) is due to its ability to capture the so-called leverage effect, the tendency of volatility to increase more with negative news rather than positive news. [Brownlees and Engle \(2012\)](#) argued that this volatility model has superior forecasting performance than other known volatility models⁴. The model takes into consideration any presence of autocorrelation of order p and is presented as follows:

⁴ Other volatility forecasting models would include ARCH, GARCH, I-GARCH, GARCH-M, GJR-GARCH, and TAR, for example. However, it is very tough to generalize the statement because results from the above models may vary due to differences in assets, data, and time period under study. See, for example, [Ali \(2013\)](#).

$$\begin{aligned}
 X_t &= a_0 + \sum_{j=1}^p a_j X_{t-1} + u_t \\
 \sigma_t^2 &= \omega + \alpha u_{t-1}^2 + \gamma u_{t-1}^2 I_{t-1}^- + \beta \sigma_{t-1}^2,
 \end{aligned}
 \tag{3}$$

with $u_t \sim D(0, \sigma_t^2)$ representing independent and identically distributed shocks with zero mean and time-varying variance, and $I_{t-1}^- = 1$ if $u_t < 0$, and zero, otherwise. In this model, the parameters α and β are respectively the ARCH and GARCH coefficients, and the parameter γ captures the leverage effect of the returns. In line with the stylized facts observed in the cryptocurrency market (see for example [Chan et al. \(2017\)](#), [Caporale and Zeokokh \(2019\)](#), and [Ardia et al. \(2019\)](#)) and, because there is a large departure of the cryptocurrencies returns from normality, we allow for the distribution D of shocks to follow a Student- t or skewed Student- t with ν degrees of freedom.

We explore whether the forecasts generated from the two models are able to provide an investor with a valid tool to hedge risk. Therefore, we derive VaR and ES using the simulated volatility series when fixing the parameter estimates produced by the models. An n -day $\tau\%$ VaR is defined as

$$\text{VaR}_t^\tau(X) = \inf\{x \mid \text{Pr}(X_t < -x) \leq \tau\},
 \tag{4}$$

and, once X is below VaR_τ , we define

$$\text{ES}^\tau(X) = \frac{1}{\tau} \int_0^\tau \text{VaR}_u(X) du.
 \tag{5}$$

To concentrate on a specific return bracket, we adopt a non-parametric technique based on Filtered Historical Simulation of [Barone-Adesi et al. \(1999\)](#) to simulate 5000 returns' paths from both the SVCJ and the AR(2)-TGARCH (1,1)~ t models. For the latter, we first standardize returns by quantiles and volatility estimates and then generate returns' paths serving as the basis for calculating VaR and ES.

Next, we evaluate the accuracy of each model through backtesting the estimated VaR and ES. The backtesting relies on comparing the risk measures estimated by the models under analysis with the actual trading results. The cases in which the actual loss exceeds the VaR estimate are called exceptions. According to [Christoffersen \(1998\)](#), the exception sequence is defined as:

$$I_t^\tau = \begin{cases} 1, & \text{if } X_t < -\text{VaR}_t^\tau \quad \text{violation occurs} \\ 0, & \text{otherwise} \end{cases}
 \tag{6}$$

for $t = T + 1, \dots, T + n$, where T is the number of return observations used to estimate the VaR of the day $T + 1$, and n is the number of one-step-ahead estimates of that risk measure included in the test. Consequently, Christoffersen's conditional coverage test (LR_{cc}) for VaR backtesting consists of determining whether the probability of occurrence of an exception, $p = \text{Pr}[X_t < \text{VaR}_t^\tau]$ is significantly different from the defined τ (unconditional coverage test LR_{uc}) and whether the exception sequence is serially independent (independence test LR_{ind})⁵. The likelihood ratio statistics for the test of correct conditional coverage is defined as:

$$LR_{cc} = 2\ln [(1 - \pi_{01})^{n_{00}} \pi_{01}^{n_{01}} (1 - \pi_{11})^{n_{10}} \pi_{11}^{n_{11}}] - 2\ln [(1 - \tau)^{n_0} \tau^{n_1}]
 \tag{7}$$

where n_0 and n_1 are respectively the number of 0s and 1's in the indicator series, n_{ij} is the number of observations with value i followed by value j in the I_t^τ series. The value $i, j = 0$ denotes no violation, while $i, j = 1$, denotes the opposite. The series I_t^τ are assumed to be a first-order Markov process

⁵ The probability of an exception does not depend on the previous day's outcome.

with transition probabilities $\pi_{ij} = \frac{n_{ij}}{\sum_j n_{ij}}$ ⁶. The likelihood function LR_{cc} follows a $\chi^2_{(2)}$ and tests the independence of exceedance (loss) across time periods. If the sequence of losses is independent, then $\pi_{01} = \pi_{11} = p$. Hence, this test can reject a model that generates too many or too few violations.

Given that VaR passes this test, we then proceed with backtesting the excess loss component, $L = ES^\tau - VaR^\tau$, using the McNeil et al. (2005) ‘zero mean test’ and the bootstrap method of Efron and Tibshirani (1994), which requires no assumption on the distribution of $S = (L - ES^\tau)1_{L > VaR^\tau}$.

Lastly, we test the superiority of a model vis-à-vis a competing model with respect to the loss function of Angelidis et al. (2004) and using Sarma et al. (2003) ‘zero median test’. The loss function is defined as:

$$C_t = \begin{cases} (X_t - (-VaR_t^\tau))^2, & \text{if violation occurs} \\ (q_\tau[X_t]_{T+1}^{T+n} - (-VaR_t^\tau))^2, & \text{otherwise} \end{cases} \quad (8)$$

where $q_\tau[X_t]_{T+1}^{T+n}$ is the quantile of the out-of-sample returns used for backtesting. At each time t , C_t increases either by excess loss, if a violation occurs, or by the difference between VaR_t^τ forecast and the future quantile. It follows that choosing the best accurate model i over model j , which will minimize the total loss $\sum_{t=1}^T C_t$, can be decided by testing the hypothesis that the median of the distribution $B_t = C_{it} - C_{jt}$ is equal to 0. Here, B_t is known as the loss differential between model i and model j at time t , and a negative value indicates the superiority of model i over j . This loss function is of practical interest to investors seeking to reduce market risk and avoiding allocating more money than needed.

3. Data and Empirical Results

In this section, we describe the details of the procedures for the comparison of the previously discussed risk models for the matter of validation, and, for a better understanding of our results, we divide this section in three parts. In the first part, we describe the stylized facts of the sample and conduct preliminary diagnostics. The second part presents the details of the in-sample estimation of the risk models, namely SVCJ, TGARCH, and RM. In the third part, we evaluate the out-of-sample forecasting ability of the models in terms of VaR and ES, and then perform backtesting for validation purposes.

3.1. Data

Over the last few years, the most important aspect of cryptocurrencies which has gained prominence in the media is the realized market volatility. To be fair, the media’s infatuation with cryptocurrencies is manifested in the actual market data. Between 26 April 2013 and 16 May 2019, the daily average return from the largest cryptocurrency Bitcoin (BTC) was 0.3% with 4.34% standard deviation. There were 174 days with daily returns falling by more than 5%, and 178 days with daily returns increasing by more than 5%. The maximum daily return during this period was 43.58% (19 November 2013) and the largest one-day change was –23.43% (12 December 2013). On 18 December 2017, the market cap for BTC was \$320 billion and the price soared to \$19,783 (17 December 2017). One year later, the market cap for the currency declined to \$63 billion (28 December 2018). As of this writing (23 May 2019), BTC had a market cap of \$138.5 billion. Such large, unprecedented swings in the market value can be terrifying for some investors, while others see opportunities. In more recent days, however, there is a lot more emphasis on avoiding volatility and promoting the stability of the cryptocurrencies to bring some sense of calm in the market. For example, companies like Google, IBM, and Facebook⁷ have announced their plans to introduce newer coins and each one is claiming that their currency will be a more stable asset than the others (Forbes, 16 April 2019).

⁶ $\pi_{01} = Pr[I_t^\tau = 1 \mid I_{t+1}^\tau = 0]$, and $\pi_{11} = Pr[I_t^\tau = 1 \mid I_{t+1}^\tau = 1]$.

⁷ In fact, Facebook is planning to introduce a cryptocurrency, appropriately named as ‘Stablecoin’ for its ‘WhatsApp’ platform.

We use daily prices of seven successful⁸ cryptocurrencies: Bitcoin (BTC), Ripple (XRP), Litecoin (LTC), Stellar (XLM), Monero (XMR), Dash (DASH), and Bytecoin (BCN), all collected from cryptocompare.com⁹. The data span the period 5 August 2014 to 24 March 2019, with a total of 1693 daily observations. Table 1 reports the summary statistics including the mean, standard deviation, minimum, maximum, skewness, kurtosis, and the p -values of the Ljung–Box test for first-order autocorrelation for all cryptocurrencies. Ripple has the highest mean of 0.24% and Bytecoin has the highest standard deviation of 11.44%. All cryptocurrencies display excess kurtosis and the Ljung–Box test shows that data exhibit first and second-order autocorrelation except for Stellar at the 5% confidence level.

Table 1. Descriptive statistics of daily log-returns of cryptocurrencies.

| | Mean | StDev | Min | Max | Skewness | Kurtosis | AR1 | AR2 |
|------|-------|-------|--------|-------|----------|----------|-------|-------|
| BTC | 0.010 | 0.166 | −0.146 | 1.788 | 3.609 | 22.78 | 0.091 | 0.117 |
| XRP | 0.037 | 0.355 | −0.309 | 6.190 | 5.546 | 65.93 | 0.421 | 0.048 |
| LTC | 0.016 | 0.248 | −0.136 | 4.789 | 9.196 | 130.18 | 0.880 | 0.766 |
| XLM | 0.015 | 0.213 | −0.206 | 3.808 | 5.532 | 68.53 | 0.037 | 0.039 |
| XMR | 0.007 | 0.134 | −0.147 | 1.306 | 2.998 | 15.12 | 0.733 | 0.423 |
| DASH | 0.012 | 0.175 | −0.196 | 1.595 | 2.705 | 12.23 | 0.671 | 0.180 |
| BCN | 0.009 | 0.163 | −0.157 | 3.049 | 6.775 | 95.30 | 0.234 | 0.117 |

Data spans from 5 August 2014 until 24 March 2019. AR1 and AR2 display the p -values of the Ljung–Box for autocorrelation of first and second order. p -values below the 1% significance level indicate rejection of the null hypothesis of no autocorrelation.

3.2. In-Sample Estimation

Table 2 provides posterior summaries for parameter estimates from the stochastic volatility with co-jumps (SVCJ) model for all cryptocurrency series. For the MCMC framework, there were 10,000 iterations with a burn-in of 2000 iterations to minimize the influence of the initial values. The initial values were as follows: $\mu \sim N(0,1)$, $\kappa \sim N(0,1)$, $\kappa\theta \sim N(0,1)$, $\rho \sim u(-1,1)$, $\sigma_V^2 \sim IG(2.5,0.1)$, $\mu_X \sim N(0,100)$, $\rho_J \sim N(0,4)$, $\sigma_X^2 \sim IG(5,20)$, $\mu_V \sim G(20,10)$, and $\lambda \sim B(2,40)$. The SVCJ model appears to be an ideal candidate for the cryptocurrencies, as indicated by the low MSE. The results show that the jump intensity λ is significant for all cryptocurrencies and is high for XRP and LTC, respectively 10.6% and 9.3%, and low for BCN and BTC, respectively 2.5% and 3.8%. The jump correlation ρ_J is insignificant for all cryptocurrencies, similarly to the findings of [Eraker et al. \(2003\)](#) with stock prices.

The results also show a positive correlation, ρ , between the Brownian motions of returns and volatility for all cryptocurrencies except for XRP and DASH, where it is negative. This shows that a negative shock to returns increases volatility, and we can infer that the leverage effect contributes to the effectiveness in fitting the volatility of cryptocurrency returns. Figure 1 displays the jumps in returns and volatility for selected cryptocurrencies with high and low intensity of jumps. XRP and LTC have high intensity, and BTC and BCN have low intensity jumps.

⁸ Our sample of cryptocurrencies captures market dynamics for various market capitalizations, ranging from high to low. Among the largest market caps (22 May 2019), we have Bitcoin (\$136.13 billion) and XRP (\$15.88 billion), in the middle market cap category, we have Litecoin (\$5.44 billion), and Bytecoin (\$0.169 billion) represents the small market cap category.

⁹ It is important to acknowledge that there are significant differences in the quality of data that are available at multiple sites including CoinAPI, Cryptodatadownload, Cryptocompare, Coinmarketcap, and Coingecko. According to Alexander and Dakos (2019), some of these data are traded prices while others are non-traded prices issued by the exchanges, leading to questionable results in empirical studies.

Table 2. Parameter estimates of stochastic volatility with co-jumps (SVCJ).

| | BTC | XRP | LTC | XLM | XMR | DASH | BCN |
|--------------|-------------------|-------------------|-------------------|-------------------|-------------------|-------------------|-------------------|
| μ | 0.023 (0.007) | -0.042 (0.023) | -0.003 (0.009) | -0.046 (0.016) | -0.009 (0.018) | -0.020 (0.014) | -0.032 (0.042) |
| κ | 0.088 (0.003) | 0.162 (0.016) | 0.055 (0.002) | 0.309 (0.006) | 0.356 (0.015) | 0.188 (0.005) | 0.108 (0.230) |
| θ | 0.091 (0.009) | 0.314 (0.025) | 0.165 (0.010) | 0.168 (0.012) | 0.132 (0.016) | 0.186 (0.016) | 0.505 (0.138) |
| μ_X | -0.002 (0.031) | -0.003 (0.050) | 0.004 (0.040) | 0.003 (0.030) | 0.001 (0.030) | 0.000 (0.028) | 0.002 (0.048) |
| σ_X^2 | 2.37 (0.068) | 1.83 (0.065) | 7.05 (0.105) | 1.92 (0.065) | 1.92 (0.067) | 1.51 (0.050) | 1.76 (0.062) |
| λ | 0.038 (0.007) | 0.106 (0.017) | 0.093 (0.010) | 0.050 (0.009) | 0.061 (0.012) | 0.079 (0.011) | 0.025 (0.011) |
| μ_V | 0.732 (0.110) | 2.509 (0.383) | 1.079 (0.107) | 3.787 (0.531) | 1.583 (0.240) | 1.796 (0.224) | 2.747 (11.747) |
| σ_V | 0.011 (0.003) | 0.029 (0.008) | 0.010 (0.002) | 0.041 (0.007) | 0.034 (0.011) | 0.021 (0.004) | 0.162 (0.046) |
| ρ | 0.012 (0.021) | -0.016 (0.041) | 0.002 (0.026) | 0.006 (0.023) | 0.005 (0.023) | -0.020 (0.022) | 0.007 (0.040) |
| ρ_J | 0.000 (0.001) | 0.003 (0.013) | 0.001 (0.024) | 0.000 (0.005) | 0.001 (0.012) | 0.001 (0.010) | 0.000 (0.001) |
| MSE | 0.854 | 0.853 | 0.869 | 0.837 | 0.878 | 0.853 | 0.826 |

Parameter estimates of SVCJ model are displayed along with the posterior means and the posterior standard deviations (in parentheses). The posterior sampling was carried out with 10,000 MCMC iterations and 2000 burn-in iterations.

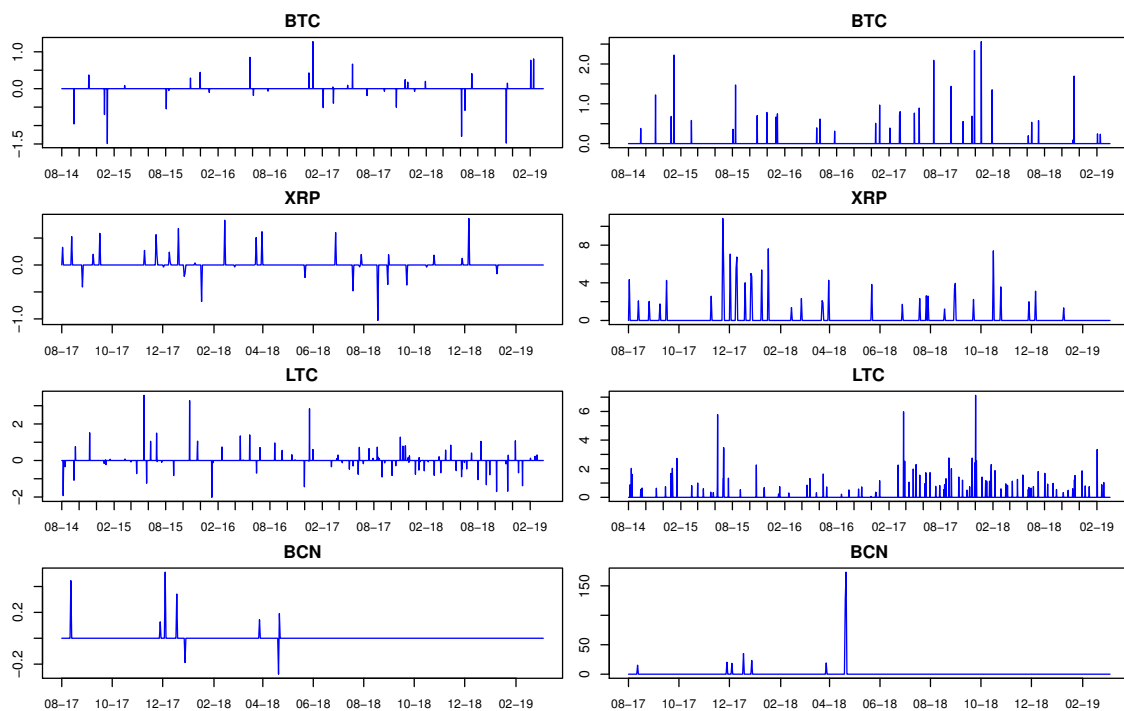


Figure 1. Jumps in returns (left columns) and jumps in volatilities (right columns).

We have also estimated several AR(2) return models with various volatility specifications namely, asymmetric GARCH, IGARCH, TARCH, and GJR-GARCH, and by alternating between Student- t and Skewed Student- t errors. Table A1 (see Appendix A) displays the estimation results of these models for the cryptocurrencies. Each model was ranked on the basis of the log-likelihood function (higher the better) and the AIC (lower the better). Overall, the TGARCH with skewed t -distributed errors turns out to be the best volatility fitting model for the cryptocurrencies considered in this paper. These results contradict the findings of Chan et al. (2017) that IGARCH and GJR-GARCH models provide the best fits for the most popular and largest cryptocurrencies.

Table 3 summarizes these results by reporting the AR(2)-TGARCH(1,1)~Skewed t estimated parameters. The parameters α and β , which represent short-run dynamics, are all significant for all cryptocurrencies. This suggests that the volatility is intensively reacting to market movements and that shocks to the conditional variance take time to die out. The leverage effect γ is statistically significant for all series except for XRP, DASH, and BCN. There were no remaining autocorrelations in both the standardized residuals and the squared standardized residuals.

Table 3. Parameter estimates of AR(2)-TGARCH(1,1)~Skewed t volatility model.

| | BTC | XRP | LTC | XLM | XRM | DASH | BCN |
|---------------|-------------------|--------------------------|-------------------------|-------------------|--------------------------|-------------------------|--------------------------|
| a_0 | 0.093 (0.040) | -0.117 (0.041) | 0.046 (0.054) | -0.098 (0.040) | 0.218 (0.106) | 0.103 (0.069) | 0.308 (1.002) |
| a_1 | -0.055 (0.018) | -0.098 (0.028) | -0.081 (0.022) | -0.157 (0.041) | -0.053 (0.025) | -0.062 (0.020) | -0.235 (0.026) |
| a_2 | -0.061 (0.024) | -0.042 (0.025) | -0.072 (0.021) | -0.048 (0.019) | -0.027 (0.023) | -0.064 (0.017) | -0.036 (0.143) |
| ω | 0.066 (0.032) | 0.632 (0.201) | 0.125 (0.059) | 0.474 (0.158) | 0.569 (0.177) | 0.448 (0.130) | 0.794 (0.244) |
| α | 0.271 (0.061) | 0.634 (0.139) | 0.421 (0.095) | 0.271 (0.054) | 0.193 (0.035) | 0.268 (0.042) | 0.167 (0.039) |
| β | 0.852 (0.020) | 0.620 (0.053) | 0.859 (0.021) | 0.775 (0.043) | 0.794 (0.038) | 0.755 (0.038) | 0.810 (0.038) |
| γ | -0.136 (0.071) | -0.061 (0.064) | -0.169 (0.087) | -0.222 (0.089) | -0.183 (0.093) | 0.066 (0.073) | -0.197 (0.161) |
| Shape | 2.473 (0.218) | 2.383 (0.026) | 2.117 (0.038) | 2.852 (0.244) | 3.487 (0.371) | 3.246 (0.313) | 3.398 (0.363) |
| Skewness | 0.930 (0.027) | 1.057 (0.026) | 1.056 (0.028) | 1.145 (0.033) | 1.104 (0.036) | 1.118 (0.035) | 1.078 (0.117) |
| LogLikelihood | -3315.8 | -3757.8 | -3586.5 | -4230.5 | -4321 | -4064 | -4735.8 |
| AIC | 5.007 | 5.672 | 5.419 | 6.389 | 6.523 | 6.138 | 7.151 |

Summary of the estimation results of the AR(2)-TGARCH(1,1)~Skewed t for the cryptocurrencies. Standard errors are in parentheses and bold indicates insignificance at 5% and 1% levels.

The estimated volatility from these three distinctly different models are reported in Figure 2 for BTC, as an example. A visual examination shows that the volatility graphs are markedly different across models. The SVCJ model produces the smoothest plot because it includes all parameters of the volatility series. The plots generated from the remaining models are substantially jagged and show significant structural breaks, which can impede our estimation of tail risk.

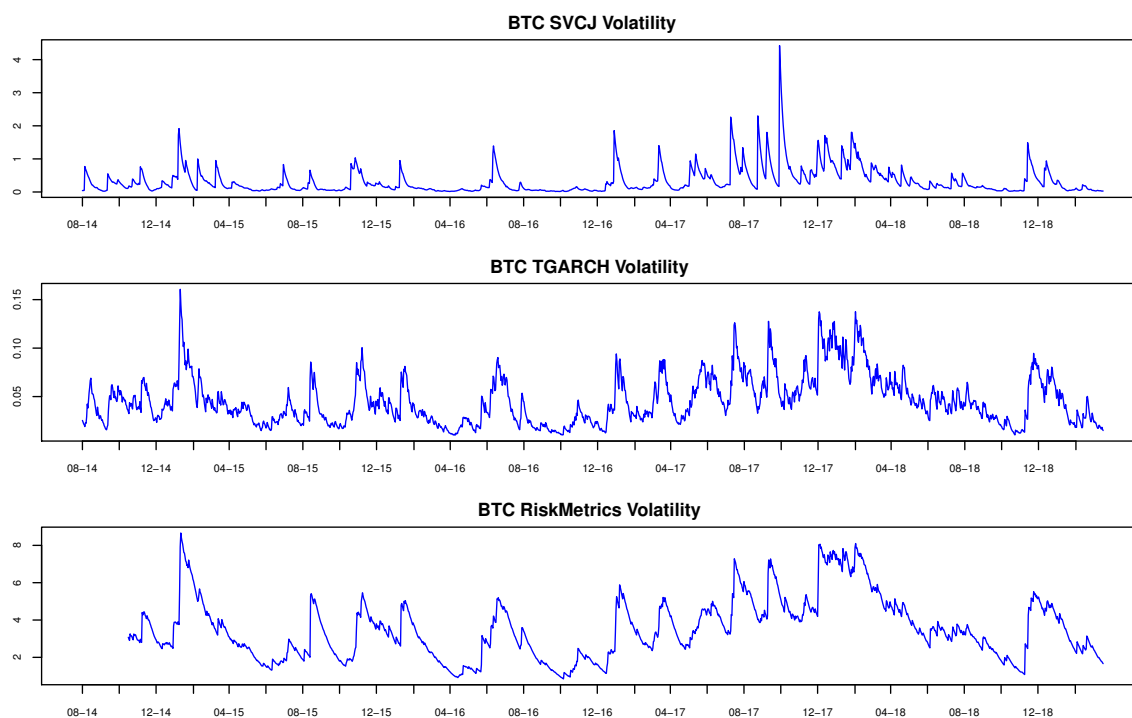


Figure 2. Estimated Volatility from SVCJ, TGARCH, and RiskMetrics Models

3.3. Out-of-Sample Validation

We proceed with an out-of-sample comparison of the risk measures and forecasting ability of the two models, SVCJ and TGARCH. Our benchmark model is the RiskMetrics (RM) of [J.P.Morgan \(1996\)](#). The risk measures VaR and ES were estimated with a rolling window of $T - 365 = 1328$ daily log-returns, and the remaining 365 days (24 March 2018 to 24 March 2019) are kept for out-of-sample forecasts and accuracy checks. We then simulate 5000 returns paths from both models. For the AR(2)-TGARCH(1,1)~Skewed t model, we used the Filtered Historical Simulation by first extracting the standardized residuals using the volatilities to form a new set of innovations, which are then utilized to obtain the conditional mean. For each return, these steps are repeated recursively to obtain different simulated pathways, with 5000 draws from the standardized residuals to generate 1328 (same as in-sample size) replicates of the returns.

Table 4 reports the out-of-sample backtesting results. The [Christoffersen \(1998\)](#) conditional coverage test confirms that the two models SVCJ and TGARCH accurately forecast the VaR as the p -values are greater than 5%. There is an exception for XRP where TGARCH performs better for 1% VaR. Although the RiskMetrics model displays forecasting accuracy, it occasionally fails to perform accordingly for LTC and XLM cryptocurrencies. Speculative investors taking either a long or short position in a cryptocurrency can generate accurate VaR forecasts using these two models.

Table 4. Value-at-Risk backtesting results.

| | SVCJ | | | TGARCH | | | RM | | |
|-----------------|--------------|---------|--------|-----------|---------|--------|--------------|---------|--------|
| | LR_{cc} | VaR (%) | ES (%) | LR_{cc} | VaR (%) | ES (%) | LR_{cc} | VaR (%) | ES (%) |
| 1% Level | | | | | | | | | |
| BTC | 0.660 | 6.89 | 9.41 | 0.499 | 9.23 | 13.96 | 0.017 | 8.91 | 13.24 |
| XRP | 0.047 | 11.34 | 16.74 | 0.993 | 9.62 | 12.36 | 0.476 | 12.90 | 19.53 |
| LTC | 0.177 | 11.45 | 17.05 | 0.407 | 12.74 | 19.80 | 0.017 | 11.72 | 19.00 |
| XLM | 0.053 | 15.99 | 22.43 | 0.408 | 10.13 | 12.60 | 0.047 | 14.38 | 21.35 |
| XMR | 0.289 | 10.76 | 15.13 | 0.289 | 10.94 | 14.67 | 0.940 | 15.11 | 21.96 |
| DASH | 0.083 | 9.42 | 13.67 | 0.452 | 11.91 | 15.85 | 0.256 | 13.57 | 19.77 |
| BCN | 0.098 | 17.79 | 24.78 | 0.365 | 18.10 | 20.75 | 0.630 | 24.62 | 37.38 |
| 5% Level | | | | | | | | | |
| BTC | 0.401 | 2.49 | 5.09 | 0.998 | 4.38 | 7.52 | 0.181 | 4.67 | 7.55 |
| XRP | 0.623 | 4.34 | 8.65 | 0.499 | 4.85 | 7.70 | 0.913 | 6.94 | 11.07 |
| LTC | 0.446 | 5.04 | 9.10 | 0.842 | 5.74 | 10.25 | 0.001 | 5.88 | 10.06 |
| XLM | 0.239 | 5.38 | 11.57 | 0.457 | 5.17 | 7.87 | 0.150 | 7.99 | 12.40 |
| XMR | 0.296 | 3.49 | 7.89 | 0.159 | 5.94 | 8.96 | 0.163 | 8.37 | 12.94 |
| DASH | 0.404 | 3.66 | 7.13 | 0.235 | 6.78 | 9.85 | 0.649 | 7.54 | 11.69 |
| BCN | 0.050 | 5.75 | 12.61 | 0.348 | 10.20 | 14.50 | 0.256 | 13.02 | 21.04 |

Christofersen's test p -values and average values of the VaR and ES forecasts are displayed under SVCJ, AR(2)-TGARCH(1,1)~Skewed t , and RiskMetrics (with a decay factor of 0.94). Bold p -values below 5% rejects the null hypothesis of correct exceedances and independence of violation sequences, and hence represents inaccurate VaR estimates.

Given the accuracy of the models, Table 5 reports the zero mean test of excess loss provided that the model first passes the test for VaR. The results indicate that the predictive power of SVCJ model is better than TGARCH and RM models at the 5% level (many of the p -values are less than 5%). One possible explanation of such a finding is that TGARCH and RM models' forecasting have less significant gains over the forecasts of the SVCJ model. This particular evidence supports our prior that accounting for jumps in returns and volatility is a reason for the SVCJ model's superior predictive power.

Table 5. Expected Shortfall backtesting results.

| | 1% Level | | | 5% Level | | |
|------|----------|--------|-------|----------|--------|-------|
| | SVCJ | TGARCH | RM | SVCJ | TGARCH | RM |
| BTC | 0.334 | 0.798 | Fail | 0.137 | 0.610 | 0.703 |
| XRP | Fail | 0.999 | 0.999 | 0.701 | 0.871 | 0.708 |
| LTC | 0.996 | 0.999 | Fail | 0.881 | 0.998 | Fail |
| XLM | 0.685 | 0.999 | Fail | 0.984 | 0.940 | 0.390 |
| XMR | 0.753 | 0.509 | 0.923 | 0.281 | 0.788 | 0.896 |
| DASH | 0.539 | 0.533 | 0.920 | 0.000 | 0.982 | 0.234 |
| BCN | 0.546 | 0.865 | 0.957 | 0.571 | 0.971 | 0.907 |

Results of the zero mean test for the excess loss, provided that the model generates accurate VaR estimates. p -values are reported at 1% and 5% risk levels for the cryptocurrencies. p -values below 5% indicate inadequacy of the model for estimating ES.

Table 6 summarizes the test of the best performing model with respect to the quantile loss function of Angelidis et al. (2004). For each cryptocurrency and confidence level, we present the loss differential B and the p -values of the zero median test of Sarma et al. (2003). When p -values are less than 5%, it implies that two competing models are significantly different from each other in terms of estimating risk. The opposite implies that the two competing models are not significantly different from each other, with respect to the quantile loss function. Hence, regulators and risk managers remain indifferent between these two models. The results suggest that, at the 5% level, the SVCJ model is better than TGARCH and RiskMetrics models because it produces lower economic losses. At the 1% level, some of

the results show that a risk manager is indifferent between the models for VaR estimation. For instance, for Bitcoin and Stellar, SCVJ and TGARCH models are not significantly different from each other, with respect to the quantile loss function. For the same cryptocurrencies, these two models are performing better than the RiskMetrics model. Therefore, as far as loss is concerned, a risk manager would prefer either SVCJ or TGARCH model over RiskMetrics.

Table 6. Quantile Loss Function test for the best model for VaR estimates

| | SVCJ vs. TGARCH | | SVCJ vs. RM | | TGARCH vs. RM | |
|-----------------|-----------------|-----------------|-------------|-----------------|---------------|-----------------|
| | B | <i>p</i> -Value | B | <i>p</i> -Value | B | <i>p</i> -Value |
| 1% Level | | | | | | |
| BTC | 277 | 1.0000 | SVCJ | | TGARCH | |
| XRP | | TGARCH | RM | | 4 | 0.0000 |
| LTC | 155 | 0.0023 | SVCJ | | TGARCH | |
| XLM | 287 | 1.0000 | SVCJ | | TGARCH | |
| XMR | 176 | 0.2480 | 100 | 0.0000 | 8 | 0.0000 |
| DASH | 147 | 0.0001 | 105 | 0.0000 | 56 | 0.0000 |
| BCN | 234 | 1.0000 | 162 | 0.0159 | 12 | 0.0000 |
| 5% Level | | | | | | |
| BTC | 93 | 0.0000 | 209 | 0.9975 | 147 | 0.0001 |
| XRP | 86 | 0.0000 | 85 | 0.0000 | 2 | 0.0000 |
| LTC | 131 | 0.0000 | 112 | 0.0000 | 157 | 0.0034 |
| XLM | 185 | 0.6030 | SVCJ | | TGARCH | |
| XMR | 95 | 0.0000 | 27 | 0.0000 | 0 | 0.0000 |
| DASH | 77 | 0.0000 | 40 | 0.0000 | 46 | 0.0000 |
| BCN | 130 | 0.0000 | 96 | 0.0000 | 43 | 0.0000 |

B statistic and *p*-values, at 1% and 5% risk levels are reported for the cryptocurrencies. *p*-values below 5% indicate that the difference in the performance of models is significant. If one model fails the previous backtest, we then report the other prevailing model.

Overall, as noted earlier in Table 5, there is a gap between the quantities of risk measured by VaR and ES at the 1% and 5% confidence levels. This suggests that ES gives a more accurate measure of risk than the traditional VaR measure. This finding seems to support the recommendation from the [Basel Committee on Banking Supervision \(2013\)](#) that banks use ES in lieu of VaR, and that there should be a recalibration of the confidence level for consistency and accuracy of the risk measure. In terms of the forecast accuracy, our results show that SVCJ and TGARCH generate better forecasts at the 1% level than RM. This evidence clearly supports the notion that fat-tailed volatility models can predict risk more accurately than non-fat-tailed models. In summary, the combination of jumps in returns and volatility in a stochastic model yields the most accurate VaR forecasts for the majority of the cryptocurrencies studied in this paper.

4. Conclusions

It is now a widely accepted view that risk models should account for the stylized facts of the data in order to be successfully validated. Estimating risk was mainly performed on many financial asset markets but not on the emerging cryptocurrency market, which has been proven to be extremely volatile. Typical volatility models may not adequately provide an accurate representation of the cryptocurrencies volatility process for successful risk management purposes. In particular, risk models must be able to capture the cryptocurrencies volatility process that includes stochastic volatility, persistence in volatility, and jump process. All these stylized features are critical for capturing unpredictable and large movements in the price process and for accurately predicting tail risk and expected shortfall. There is limited research on this topic despite the fact that investors are exploring how cryptocurrencies can be integrated into a portfolio along with other traditional assets such as stocks, bonds, currencies, and commodities. Choosing a proper model that provides a parsimonious representation of the distribution of the return-generating process is the first step.

In this paper, we identified risk models for the cryptocurrency market and evaluated their performance for validation purposes. We evaluated models based on stochastic volatility with co-jumps in returns and volatility (SVCJ), threshold GARCH volatility (TGARCH), and RiskMetrics. Backtesting methods using the conditional and unconditional coverage were performed to test the validity of the models, and the regulatory loss function was applied to choose the most accurate model.

The validation results reveal that, although the models considered in this paper are effective for fitting the cryptocurrency returns, the SVCJ model more accurately forecasts risk in a VaR and ES sense, and the reality check proves its superiority over TGARCH and RiskMetrics models. Therefore, incorporating jumps in the cryptocurrency volatility model improves the forecasting ability of risk in terms of VaR and ES. This is important for risk-averse investors and for speculative investors who are particularly interested in hedging their risk in a VaR sense. It is, therefore, recommended to use a model that accounts for jumps, leptokurtosis, and leverage effects when dealing with cryptocurrency market data. Such a model improves risk forecasting in terms of VaR and Expected Shortfall.

The results in this study have several implications for applying the SVCJ model to other assets including commodities, foreign currencies, and stock market indices, especially in times of stress. The global financial market has seen unprecedented volatility in recent days, given falling oil prices and concerns related to the COVID-19 pandemic. It would be interesting to see if such wild swings in the market can be studied using the SVCJ model to incorporate the co-jumps in returns and volatility affecting the measurement of VaR and Expected Shortfalls in the contagion like period that we now have. We leave that for a future study.

Author Contributions: R.N. collected the data, carried the statistical analysis, and drafted the manuscript. J.S. carried the literature review and helped with the discussion. All authors have read and agreed to the published version of the manuscript.

Acknowledgments: R.N. would like to acknowledge the financial support provided by Applied Science University (Grant: Admin1/2019).

Conflicts of Interest: The authors declare no conflict of interest.

Appendix A

Table A1. Volatility estimates.

| | GARCH ~ t | GARCH ~ Skewed t | IGARCH ~ t | IGARCH ~ Skewed t | TGARCH ~ t | TGARCH ~ Skewed t | GJR-GARCH ~ t | GJR-GARCH ~ Skewed t |
|----------------------|-----------------------|-----------------------|-----------------------|------------------------|-----------------------|------------------------|-----------------------|---------------------------|
| Bitcoin (BTC) | | | | | | | | |
| a_0 | 0.191 (0.048) | 0.140 (0.058) | 0.191 (0.048) | 0.140 (0.057) | 0.175 (0.032) | 0.093 (0.040) | 0.197 (0.050) | 0.149 (0.056) |
| a_1 | -0.021 (0.026) | -0.021 (0.026) | -0.022 (0.026) | -0.021 (0.026) | -0.051 (0.023) | -0.055 (0.018) | -0.031 (0.031) | -0.032 (0.027) |
| a_2 | -0.043 (0.025) | -0.044 (0.025) | -0.043 (0.025) | -0.044 (0.025) | -0.059 (0.014) | -0.061 (0.024) | -0.048 (0.023) | -0.050 (0.025) |
| ω | 0.205 (0.090) | 0.210 (0.089) | 0.203 (0.077) | 0.207 (0.077) | 0.063 (0.030) | 0.066 (0.032) | 0.169 (0.175) | 0.173 (0.085) |
| α | 0.171 (0.024) | 0.173 (0.024) | 0.171 (0.023) | 0.173 (0.023) | 0.254 (0.053) | 0.271 (0.061) | 0.195 (0.032) | 0.197 (0.030) |
| β | 0.827 (0.025) | 0.825 (0.025) | 0.828 (NA) | 0.826 (NA) | 0.857 (0.021) | 0.852 (0.020) | 0.839 (0.049) | 0.837 (0.027) |
| γ | | | | | -0.141 (0.073) | -0.136 (0.071) | -0.073 (0.041) | -0.073 (0.032) |
| shape | 3.385 (0.240) | 3.401 (0.242) | 3.377 (0.191) | 3.393 (0.193) | 2.517 (0.216) | 2.473 (0.218) | 3.417 (0.284) | 3.441 (0.246) |
| skewness | | 0.951 (0.030) | | 0.951 (0.030) | | 0.930 (0.027) | | 0.951 (0.030) |
| LogLikelihood | -3333.9 | -3332.6 | -3333.7 | -3332.4 | -3315.8 | -3313.3 | -3331.4 | -3330.2 |
| AIC | 5.035 | 5.034 | 5.033 | 5.033 | 5.009 | 5.007 | 5.033 | 5.032 |
| Ripple (XRP) | | | | | | | | |
| a_0 | -0.256 (0.067) | -0.161 (0.083) | -0.256 (0.067) | -0.162 (0.082) | -0.220 (0.054) | -0.117 (0.041) | -0.250 (0.068) | -0.156 (0.083) |
| a_1 | 0.001 (0.028) | 0.001 (0.029) | 0.001 (0.028) | 0.001 (0.028) | -0.011 (0.028) | -0.098 (0.028) | 0.004 (0.028) | 0.005 (0.028) |
| a_2 | -0.040 (0.023) | -0.035 (0.025) | -0.040 (0.022) | -0.035 (0.025) | -0.047 (0.017) | -0.042 (0.025) | -0.041 (0.023) | -0.035 (0.025) |
| ω | 1.940 (0.776) | 1.843 (0.766) | 1.932 (0.671) | 1.834 (0.663) | 0.617 (0.196) | 0.632 (0.201) | 2.033 (0.806) | 1.933 (0.808) |
| α | 0.375 (0.072) | 0.364 (0.073) | 0.374 (0.071) | 0.364 (0.072) | 0.640 (0.140) | 0.634 (0.139) | 0.425 (0.092) | 0.411 (0.095) |
| β | 0.623 (0.080) | 0.634 (0.081) | 0.624 (NA) | 0.635 (NA) | 0.625 (0.051) | 0.620 (0.053) | 0.615 (0.081) | 0.627 (0.084) |
| γ | | | | | -0.055 (0.064) | -0.061 (0.064) | -0.083 (0.041) | -0.077 (0.032) |
| shape | 3.025 (0.184) | 3.036 (0.187) | 3.023 (0.152) | 3.034 (0.154) | 2.370 (0.163) | 2.383 (0.165) | 3.014 (0.184) | 3.021 (0.187) |
| skewness | | 1.062 (0.032) | | 1.062 (0.032) | | 1.057 (0.026) | | 1.062 (0.032) |
| LogLikelihood | -3778.7 | -3776.7 | -3778.6 | -3776.6 | -3759.5 | -3757.8 | -3778.1 | -3776.2 |
| AIC | 5.705 | 5.704 | 5.704 | 5.702 | 5.678 | 5.672 | 5.706 | 5.705 |

Table A1. Cont.

| | GARCH ~ t | GARCH ~ Skewed t | IGARCH ~ t | IGARCH ~ Skewed t | TGARCH ~ t | TGARCH ~ Skewed t | GJR-GARCH ~ t | GJR-GARCH ~ Skewed t |
|-----------------------|----------------|-----------------------|-----------------|------------------------|-----------------|------------------------|--------------------|---------------------------|
| Litecoin (LTC) | | | | | | | | |
| a_0 | -0.027 (0.034) | 0.043 (0.055) | -0.027 (0.044) | 0.043 (0.055) | -0.028 (0.040) | 0.046 (0.054) | -0.021 (0.044) | 0.054 (0.055) |
| a_1 | -0.084 (0.024) | -0.083 (0.022) | -0.084 (0.022) | -0.083 (0.022) | -0.086 (0.021) | -0.081 (0.022) | -0.086 (0.022) | -0.083 (0.022) |
| a_2 | -0.057 (0.021) | -0.076 (0.021) | -0.075 (0.021) | -0.076 (0.021) | -0.071 (0.021) | -0.072 (0.021) | -0.075 (0.021) | -0.074 (0.020) |
| ω | 0.181 (0.087) | 0.182 (0.085) | 0.179 (0.081) | 0.180 (0.081) | 0.126 (0.058) | 0.125 (0.059) | 0.139 (0.070) | 0.146 (0.071) |
| α | 0.115 (0.027) | 0.115 (0.020) | 0.116 (0.018) | 0.116 (0.019) | 0.448 (0.066) | 0.421 (0.095) | 0.139 (0.024) | 0.143 (0.026) |
| β | 0.883 (0.036) | 0.883 (0.020) | 0.883 (NA) | 0.883 (NA) | 0.859 (0.021) | 0.859 (0.021) | 0.900 (0.017) | 0.900 (0.017) |
| γ | | | | | -0.158 (0.086) | -0.169 (0.087) | -0.083 (0.023) | -0.086 (0.024) |
| shape | 2.677 (0.119) | 2.679 (0.118) | 2.670 (0.075) | 2.672 (0.075) | 2.102 (0.006) | 2.117 (0.038) | 2.639 (0.114) | 2.631 (0.114) |
| skew | | 1.063 (0.030) | | 1.063 (0.030) | | 1.056 (0.028) | | 1.067 (0.031) |
| LogLikelihood | -3610.6 | -3608.4 | -3610.4 | -3608.1 | -3588.6 | -3586.5 | -3604.0 | -3601.5 |
| AIC | 5.452 | 5.450 | 5.450 | 5.448 | 5.420 | 5.419 | 5.444 | 5.441 |
| Stellar (XLM) | | | | | | | | |
| a_0 | -0.407 (0.089) | -0.162 (0.111) | -0.407 (0.089) | -0.162 (0.111) | -0.385 (0.074) | -0.098 (0.040) | -0.384 (0.090) | -0.140 (0.113) |
| a_1 | -0.156 (0.028) | -0.162 (0.028) | -0.156 (0.028) | -0.162 (0.028) | -0.157 (0.025) | -0.157 (0.041) | -0.154 (0.028) | -0.156 (0.028) |
| a_2 | -0.061 (0.025) | -0.056 (0.024) | -0.061 (0.025) | -0.056 (0.024) | -0.062 (0.028) | -0.048 (0.019) | -0.057 (0.025) | -0.050 (0.025) |
| ω | 3.069 (1.197) | 3.046 (1.101) | 3.057 (1.127) | 3.037 (1.071) | 0.490 (0.179) | 0.474 (0.158) | 3.395 (1.246) | 3.377 (1.174) |
| α | 0.272 (0.058) | 0.267 (0.056) | 0.272 (0.055) | 0.268 (0.051) | 0.305 (0.065) | 0.271 (0.054) | 0.341 (0.080) | 0.332 (0.080) |
| β | 0.726 (0.058) | 0.731 (0.052) | 0.727 (NA) | 0.731 (NA) | 0.760 (0.048) | 0.775 (0.043) | 0.711 (0.056) | 0.718 (0.051) |
| γ | | | | | -0.195 (0.086) | -0.222 (0.089) | -0.106 (0.074) | -0.097 (0.073) |
| shape | 3.073 (0.215) | 3.090 (0.224) | 3.069 (0.167) | 3.086 (0.170) | 2.738 (0.225) | 2.852 (0.244) | 3.043 (0.217) | 3.046 (0.224) |
| skew | | 1.141 (0.039) | | 1.141 (0.039) | | 1.145 (0.033) | | 1.138 (0.039) |
| LogLikelihood | -4243.1 | -4235.6 | -4243.1 | -4235.5 | -4237.9 | -4230.5 | -4241.9 | -4243.5 |
| AIC | 6.405 | 6.395 | 6.404 | 6.394 | 6.399 | 6.389 | 6.405 | 6.395 |
| Monero (XMR) | | | | | | | | |
| a_0 | -0.064 (0.127) | 0.153 (0.154) | -0.067 (0.126) | 0.152 (0.155) | -0.021 (0.127) | 0.218 (0.106) | -0.031 (0.130) | 0.183 (0.156) |
| a_1 | -0.044 (0.025) | -0.044 (0.024) | -0.044 (0.026) | -0.044 (0.026) | -0.054 (0.027) | -0.053 (0.025) | -0.044 (0.026) | -0.043 (0.028) |
| a_2 | -0.024 (0.026) | -0.023 (0.026) | -0.024 (0.026) | -0.023 (0.025) | -0.031 (0.026) | -0.027 (0.023) | -0.024 (0.025) | -0.021 (0.026) |
| ω | 3.852 (1.275) | 3.633 (1.232) | 3.810 (1.271) | 3.570 (1.228) | 0.601 (0.181) | 0.569 (0.177) | 3.838 (1.265) | 3.655 (1.235) |
| α | 0.235 (0.053) | 0.224 (0.051) | 0.244 (0.042) | 0.236 (0.042) | 0.199 (0.036) | 0.193 (0.035) | 0.265 (0.064) | 0.255 (0.063) |
| β | 0.754 (0.042) | 0.762 (0.042) | 0.755 (NA) | 0.763 (NA) | 0.785 (0.039) | 0.794 (0.038) | 0.756 (0.042) | 0.764 (0.042) |
| γ | | | | | -0.185 (0.094) | -0.183 (0.093) | -0.076 (0.058) | -0.072 (0.056) |

Table A1. Cont.

| | GARCH ~ t | GARCH ~ Skewed t | IGARCH ~ t | IGARCH ~ Skewed t | TGARCH ~ t | TGARCH ~ Skewed t | GJR-GARCH ~ t | GJR-GARCH ~ Skewed t |
|-----------------------|-----------------------|-----------------------|-----------------------|------------------------|-----------------------|------------------------|-----------------------|---------------------------|
| shape | 3.420 (0.365) | 3.486 (0.374) | 3.358 (0.254) | 3.395 (0.264) | 3.432 (0.365) | 3.487 (0.371) | 3.448 (0.371) | 3.503 (0.378) |
| skew | | 1.094 (0.039) | | 1.094 (0.039) | | 1.104 (0.036) | | 1.094 (0.039) |
| LogLikelihood | -4324.1 | -4320.9 | -4326.7 | -4322.9 | -4324.1 | -4321.0 | -4323.2 | -4320.1 |
| AIC | 6.527 | 6.524 | 6.533 | 6.529 | 6.526 | 6.523 | 6.527 | 6.524 |
| Dash (DASH) | | | | | | | | |
| a_0 | -0.057 (0.094) | 0.166 (0.116) | -0.057 (0.044) | 0.166 (0.166) | -0.089 (0.063) | 0.103 (0.069) | -0.074 (0.095) | 0.144 (0.116) |
| a_1 | -0.058 (0.028) | -0.049 (0.028) | -0.057 (0.028) | -0.049 (0.028) | -0.061 (0.024) | -0.062 (0.020) | -0.058 (0.027) | -0.052 (0.027) |
| a_2 | -0.055 (0.026) | -0.055 (0.026) | -0.055 (0.026) | -0.055 (0.026) | -0.065 (0.020) | -0.064 (0.017) | -0.054 (0.026) | -0.055 (0.026) |
| ω | 2.779 (0.814) | 2.616 (0.770) | 2.777 (0.809) | 2.615 (0.770) | 0.481 (0.140) | 0.448 (0.130) | 2.680 (0.788) | 2.486 (0.734) |
| α | 0.290 (0.058) | 0.275 (0.056) | 0.291 (0.045) | 0.276 (0.043) | 0.292 (0.047) | 0.268 (0.042) | 0.244 (0.054) | 0.227 (0.051) |
| β | 0.708 (0.045) | 0.723 (0.043) | 0.708 (NA) | 0.723 (NA) | 0.741 (0.040) | 0.755 (0.038) | 0.711 (0.044) | 0.725 (0.042) |
| γ | | | | | -0.141 (0.073) | -0.136 (0.071) | -0.073 (0.041) | -0.073 (0.032) |
| shape | 3.313 (0.293) | 3.342 (0.309) | 3.309 (0.226) | 3.336 (0.292) | 3.147 (0.296) | 3.246 (0.313) | 3.367 (0.292) | 3.419 (0.310) |
| skew | | 1.127 (0.039) | | 1.127 (0.039) | | 1.118 (0.035) | | 1.129 (0.039) |
| LogLikelihood | -4071.2 | -4065.3 | -4071.2 | -4070.6 | -4069.1 | -4064.0 | -4070.3 | -4064.3 |
| AIC | 6.145 | 6.139 | 6.145 | 6.140 | 6.145 | 6.138 | 6.146 | 6.139 |
| Bytecoin (BCN) | | | | | | | | |
| a_0 | -0.015 (0.147) | 0.184 (0.180) | -0.011 (0.145) | 0.199 (0.182) | 0.049 (0.147) | 0.308 (1.002) | -0.009 (0.149) | 0.203 (0.183) |
| a_1 | -0.221 (0.028) | -0.220 (0.028) | -0.221 (0.028) | -0.220 (0.028) | -0.240 (0.027) | -0.235 (0.026) | -0.221 (0.028) | -0.219 (0.028) |
| a_2 | -0.034 (0.026) | -0.033 (0.026) | -0.034 (0.025) | -0.034 (0.026) | -0.038 (0.025) | -0.036 (0.143) | -0.034 (0.026) | -0.033 (0.026) |
| ω | 8.810 (2.772) | 8.472 (2.630) | 8.972 (3.038) | 8.589 (2.891) | 0.829 (0.255) | 0.794 (0.244) | 8.795 (2.754) | 8.496 (2.610) |
| α | 0.199 (0.052) | 0.193 (0.050) | 0.242 (0.045) | 0.237 (0.044) | 0.169 (0.034) | 0.167 (0.039) | 0.205 (0.059) | 0.207 (0.059) |
| β | 0.759 (0.046) | 0.764 (0.044) | 0.757 (NA) | 0.762 (NA) | 0.806 (0.039) | 0.810 (0.038) | 0.760 (0.045) | 0.765 (0.043) |
| γ | | | | | -0.159 (0.120) | -0.197 (0.161) | -0.016 (0.066) | -0.033 (0.064) |
| shape | 3.290 (0.336) | 3.345 (0.350) | 3.045 (0.198) | 3.075 (0.204) | 3.346 (0.340) | 3.398 (0.363) | 3.294 (0.337) | 3.351 (0.352) |
| skew | | 1.065 (0.034) | | 1.064 (0.034) | | 1.078 (0.117) | | 1.067 (0.035) |
| LogLikelihood | -4737.8 | -4735.9 | -4738.3 | -4736.5 | -4738.3 | -4735.8 | -4737.8 | -4736.8 |
| AIC | 7.151 | 7.149 | 7.150 | 7.149 | 7.153 | 7.151 | 7.152 | 7.152 |

Estimation results of various GARCH volatility models with t and Skewed t errors for the cryptocurrencies are reported in this Table. For each parameter, we report the standard errors in parentheses and bold indicates insignificance at 5% and 1% levels. Higher LogLikelihood and lower AIC indicate the best fit model for cryptocurrencies.

References

- Ali, Ghulam. 2013. EGARCH, GJR-GARCH, TGARCH, AVGARCH, NGARCH, IGARCH and APARCH models for pathogens at marine recreational sites. *Journal of Statistical and Econometric Methods* 2: 57–73.
- Andersen, Torben G., Luca Benzoni, and Jesper Lund. 2002. An empirical investigation of continuous-time equity return models. *Journal of Finance* 57: 1239–84. [CrossRef]
- Angelidis, Timotheos, Alexandros Benos, and Stavros Degiannakis. 2004. The use of GARCH models in VaR estimation. *Statistical Methodology* 1: 105–28. [CrossRef]
- Ardia, David, Keven Bluteau, and Maxime Rüede. 2019. Regime changes in Bitcoin GARCH volatility Dynamics. *Finance Research Letters* 29: 266–71. [CrossRef]
- Bakshi, Gurdip, Charles Cao, and Zhiwu Chen. 1997. Empirical performance of alternative option pricing models. *Journal of Finance* 52: 583–602 [CrossRef]
- Bariviera, Aurelio F., Maria José Basgall, Waldo Hasperu e, and Marcelo Naiouf. 2017. Some stylized facts of the Bitcoin market. *Physica A: Statistical Mechanics and Its Applications* 484: 82–90. [CrossRef]
- Barone-Adesi, Giovanni, Kostas Giannopoulos, and Les Vosper. 1999. VaR without Correlations for Nonlinear Portfolios. *Journal of Futures Markets* 19: 583–602. [CrossRef]
- Basel Committee on Banking Supervision. 2013. *Fundamental Review of the Trading Book: A Revised Market Risk Framework*. Second Consultative Paper. Switzerland: Bank for International Settlement.
- Bates, David. 1996. Jump and Stochastic Volatility: Exchange Rate Processes Implicit in Deutsche Mark Options. *The Review of Financial Studies* 9: 69–107. [CrossRef]
- Bauwens, Luc, and S ebastien Laurent. 2005. A New Class of Multivariate Skew Densities, With Application to Generalized Autoregressive Conditional Heteroscedasticity Models. *Journal of Business & Economic Statistics* 23: 346–54.
- Bernanke, Ben S. 2008. Risk management in financial institutions. Presented at the Federal Reserve Bank of Chicago’s Annual Conference on Bank Structure and Competition, Chicago, IL, USA, May 15.
- Brownlees, Christian T., and Robert F. Engle. 2012. Volatility, Correlation and Tails for Systemic Risk Measurement. Working Paper, NYU, New York, NY, USA. Available online: <http://https://www.semanticscholar.org/paper> (accessed on 12 February 2019).
- Caporale, Guglielmo, and Timur Zeokokh. 2019. Modelling volatility of cryptocurrencies using Markov-Switching GARCH models. *Research in International Business and Finance* 48: 143–55. [CrossRef]
- Chan, Stephen, Jeffrey Chu, Saralees Nadarajah, and Joerg Osterrieder. 2017. A statistical analysis of cryptocurrencies. *Journal of Risk Financial Management* 10: 2–32. [CrossRef]
- Christoffersen, Peter F. 1998. Evaluating Interval Forecasts. *International Economic Review* 39: 841–62. [CrossRef]
- Danielsson, Jon, and Yuji Morimoto. 2000. Forecasting Extreme Financial Risk: A Critical Analysis of Practical Methods for the Japanese Market. *Monetary and Economic Studies* 18: 25–48.
- Danielsson, Jon, Kevin R. James, Marcela Valenzuela, and Ilknur Zer. 2016. Model risk of risk models. *Journal of Financial Stability* 23: 79–91. [CrossRef]
- Duffie, Darrell, Jun Pan, and Kenneth Singleton. 2000. Transform analysis and asset pricing for affine jump-diffusions. *Econometrica* 68: 1343–76. [CrossRef]
- Efron, Bradley, and Robert J. Tibshirani. 1994. *An Introduction to the Bootstrap*. New York: Chapman & Hall/CRC, pp. 141–152.
- Eraker, Bj orn, Michael Johannes, and Nicholas Polson. 2003. The impact of jumps in volatility and returns. *Journal of Finance* 59: 227–60. [CrossRef]
- Glosten, Lawrence R., Ravi Jaganathan, and David E. Runkle. 1993. On the relation between the expected value and the volatility of the normal excess return on stocks. *Journal of Finance* 48: 1779–801. [CrossRef]
- Heston, Steven L. 1993. A Closed-Form Solution of Options with Stochastic Volatility with Applications to Bond and Currency Options. *The Review of Financial Studies* 6: 327–43. [CrossRef]
- Jorion, Philippe. 2000. Risk Management Lessons from Long-Term Capital Management. *European Financial Management* 6: 277–300. [CrossRef]
- J.P.Morgan/Reuters. 1996. *RiskMetrics—Technical Document*, 4th ed. New York: J.P.Morgan/Reuters.
- Maheu, John M., and Thomas H. McCurdy. 2004. News Arrival, Jump Dynamics, and Volatility Components for Individual Stock Returns. *The Journal of Finance* 59: 755–93. [CrossRef]

- McNeil, Alexander J., Rüdiger Frey, and Paul Embrechts. 2005. *Quantitative Risk Management*. Princeton: Princeton University Press.
- Pan, Jun. 2002. The jump-risk premia implicit in options: Evidence from an integrated time-series study. *Journal of Financial Economics* 63: 3–50. [[CrossRef](#)]
- Sarma, Mandira, Susan Thomas, and Ajay Shah. 2003. Selection of Value-at-Risk models. *Journal of Forecasting* 22: 337–58. [[CrossRef](#)]
- Segnon, Mawuli, and Stelios Bekiros. 2019. *Forecasting Volatility in Cryptocurrency Markets*. CQE Working Papers 7919. Münster: Center for Quantitative Economics (CQE), University of Muenster. Available online: www.uni-munster.de (accessed on 12 February 2019).
- Su, Jung-Bin, and Jui-Cheng Hung. 2011. Empirical analysis of jump dynamics, heavy-tails and skewness on value-at-risk estimation. *Economic Modelling* 28: 1117–30. [[CrossRef](#)]
- Ze-To, Samuel Y. M. 2012. Crisis, Value at Risk and Conditional Extreme Value Theory via the NIG + Jump Model. *Journal of Mathematical Finance* 2: 225–37. [[CrossRef](#)]



© 2020 by the authors. Licensee MDPI, Basel, Switzerland. This article is an open access article distributed under the terms and conditions of the Creative Commons Attribution (CC BY) license (<http://creativecommons.org/licenses/by/4.0/>).