

Auerbach, Alan J.

Working Paper

Why have corporate tax revenues declined?: Another look

CESifo Working Paper, No. 1785

Provided in Cooperation with:

Ifo Institute – Leibniz Institute for Economic Research at the University of Munich

Suggested Citation: Auerbach, Alan J. (2006) : Why have corporate tax revenues declined?: Another look, CESifo Working Paper, No. 1785, Center for Economic Studies and ifo Institute (CESifo), Munich

This Version is available at:

<https://hdl.handle.net/10419/25830>

Standard-Nutzungsbedingungen:

Die Dokumente auf EconStor dürfen zu eigenen wissenschaftlichen Zwecken und zum Privatgebrauch gespeichert und kopiert werden.

Sie dürfen die Dokumente nicht für öffentliche oder kommerzielle Zwecke vervielfältigen, öffentlich ausstellen, öffentlich zugänglich machen, vertreiben oder anderweitig nutzen.

Sofern die Verfasser die Dokumente unter Open-Content-Lizenzen (insbesondere CC-Lizenzen) zur Verfügung gestellt haben sollten, gelten abweichend von diesen Nutzungsbedingungen die in der dort genannten Lizenz gewährten Nutzungsrechte.

Terms of use:

Documents in EconStor may be saved and copied for your personal and scholarly purposes.

You are not to copy documents for public or commercial purposes, to exhibit the documents publicly, to make them publicly available on the internet, or to distribute or otherwise use the documents in public.

If the documents have been made available under an Open Content Licence (especially Creative Commons Licences), you may exercise further usage rights as specified in the indicated licence.

WHY HAVE CORPORATE TAX REVENUES DECLINED? ANOTHER LOOK

ALAN J. AUERBACH

CESIFO WORKING PAPER NO. 1785

CATEGORY 1: PUBLIC FINANCE

AUGUST 2006

PRESENTED AT CESIFO VENICE SUMMER INSTITUTE, WORKSHOP ON
'THE FUTURE OF CAPITAL INCOME TAXATION', JULY 2006

An electronic version of the paper may be downloaded

- *from the SSRN website:* www.SSRN.com
- *from the RePEc website:* www.RePEc.org
- *from the CESifo website:* www.CESifo-group.de

WHY HAVE CORPORATE TAX REVENUES DECLINED? ANOTHER LOOK

Abstract

The relative constancy of nonfinancial corporate tax revenues as a share of U.S. GDP masks offsetting trends in the ratio of corporate profits to GDP (declining) and the average tax rate (increasing). The average tax rate rose steadily between 1996 and 2003, an increase largely attributable to the importance of tax losses. This rise casts some doubt on the role of tax planning activities in reducing corporate taxes. So, too, does the relative stability of the rate of profit (relative to net assets), which might be expected to have declined had the understatement of profits for tax purposes been increasing.

JEL Code: H25, G32.

Keywords: corporate profits, tax shelters, tax losses.

*Alan J. Auerbach
Department of Economics
University of California
549 Evans Hall
Berkeley, CA 94720-3880
USA
auerbach@econ.berkeley.edu*

This paper was prepared for the CESifo workshop, “The Future of Capital Income Taxation,” Venice, July 17-18, 2006. I am grateful to Anne Moore for excellent and timely research assistance and to conference participants for comments on an earlier draft.

I. Introduction

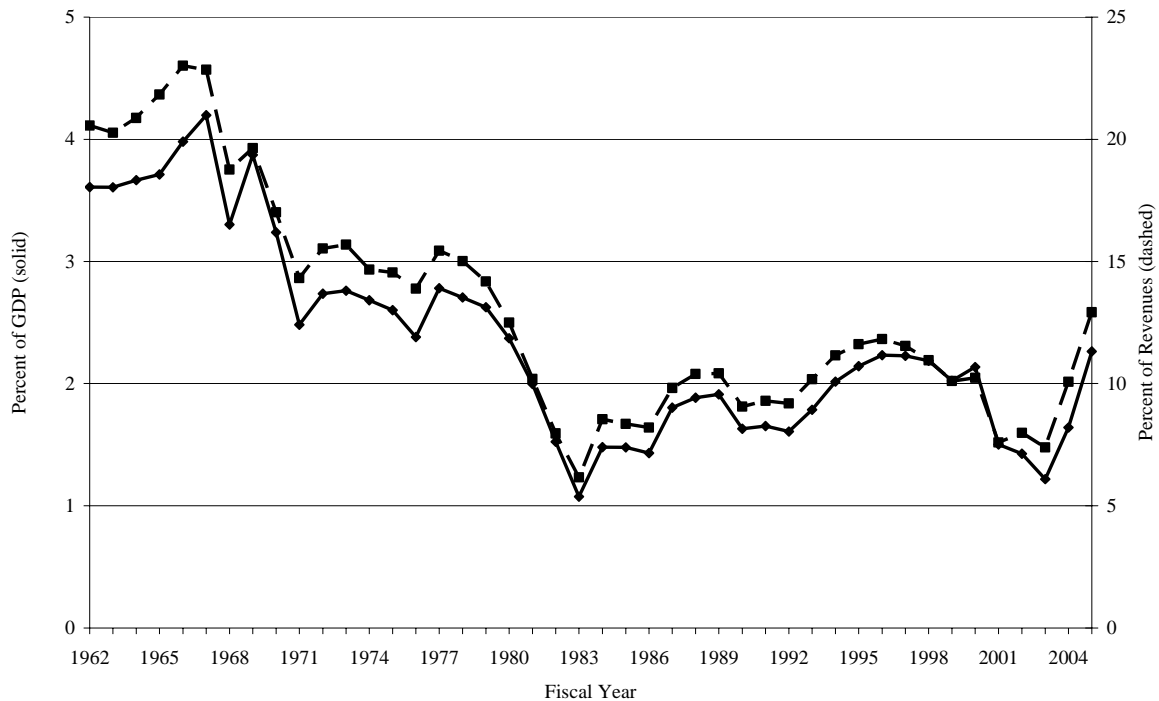
Corporate income taxes present a challenge for economists. Their incidence has seemed particularly difficult to assign¹ and there have been persistent questions about the logic of a separate tax on corporations (e.g., McLure 1979). In recent years, the pressures of financial innovation and international tax competition have presented new challenges to countries seeking to maintain a corporate tax, leading to further questions about the role of this tax as a component of tax structure. Yet corporate taxes remain an integral component of national tax systems. In this paper, I review the recent evolution of U.S. corporate tax collections, considering the factors that have contributed to the relatively small share of federal tax revenues for which they account in order to gain insight into the future of the U.S. corporate income tax.

Figure 1 shows U.S corporate income taxes as a share of GDP and of federal revenues for fiscal years from 1962 through 2005. The two series track each other closely because overall revenues as a share of GDP have remained rather stable during the period, with an average just below 20 percent. During most of the 1960s, corporate taxes accounted for more than one fifth of revenues and nearly 4 percent of GDP. But these figures fell steadily during the 1970s and early 1980s so that, by 1983, corporate taxes accounted for just 1 percent of GDP and 6 percent of federal revenues. This decline prompted an examination by Auerbach and Poterba (1987), who developed a methodology for attributing changes in corporate tax revenues to different sources. Their decomposition assigned some of the decline in the importance of the corporate tax to a fall in corporate profitability and some to a fall in the corporate average tax rate, the latter to a considerable extent attributable to changes in capital recovery provisions. Subsequent analyses using the Auerbach-Poterba methodology considered why corporate revenues did not increase by as much as predicted after the Tax

¹ For a recent survey of the literature, see Auerbach (2006)

Reform Act of 1986 (Poterba 1992) and why corporate taxes collections rebounded during the 1990s, even as the demise of the corporate tax was being predicted (Mackie 1999).

Figure 1. Trends in U.S. Federal Corporate Income Tax Revenues



Corporate taxes fell in nominal terms between 1998 and 1999 as the economy grew strongly and fell sharply again as a share of GDP and of revenues in 2001. These developments helped prompt examinations of the potential role of corporate tax shelters in eroding the corporate tax base (e.g., Desai 2003). But, since a local trough in 2003, corporate tax collections have rebounded so strongly that they accounted for a higher share of revenues and GDP in 2005 than in any fiscal year since the 1970s.

To help understand these recent developments and get a sense of the role that different factors will play in the future, I apply and extend the Auerbach-Poterba methodology to examine the trends in taxes paid by nonfinancial corporations from 1983 through 2003, starting in 1983 to provide a few years' overlap with the original Auerbach-Poterba analysis, which ended its sample in 1985. The Appendix describes the methodology and data sources used.

II. Corporate Taxes, Assets and Profitability

The first column of Table 1 shows the taxes paid by all corporations during the period 1983-2003, scaled by GDP, tracking the corresponding series in Figure 1 except that (1) tax years are used, and (2) some adjustments to the measure of taxes are made, as outlined in the Appendix, to reflect the timing distinction between tax payments and the accrual of tax liability. The next column of the table excludes the taxes paid by financial corporations. Because a significant share of the financial corporate sector (such as insurance companies and mutual funds) is subject to a variety of special tax regimes, it is useful to exclude financial corporations when considering the importance of broad tax provisions; following Auerbach and Poterba, I do so and consider only nonfinancial corporations (NFCs) for the remainder of the paper. However, a comparison of the first two columns of Table 1 does reveal an increase in the importance of financial corporations among corporate taxpayers. In 1983, financial corporations accounted for just over 5 percent of all corporate revenues, but this share rose fairly steadily until, over the period 1991-2003, financial corporations accounted for roughly one quarter of all corporate tax revenues. Without further analysis, it is not possible to exclude changes in tax rules as a contributing factor, but the growing importance of the financial sector seems an obvious primary explanation for the observed trend.

The third column of Table 1 divides the taxes of NFCs by the estimated replacement cost of net assets (assets net of credit market debt) held by nonfinancial C corporations, or CNFCs. A growing share of corporate assets is held by S corporations, which legally are corporations but are not liable for corporate income taxes, their earnings being passed directly

to shareholders prior to taxation. As corporate taxes are paid only by C corporations, therefore, it is useful to use C corporation assets in forming a tax-assets ratio.²

Table 1. Federal Corporate Revenues, 1983-2003

Year	Corporate Taxes as a Percent of GDP	NFC Taxes as a Percent of:	
		GDP	CNFC Assets
1983	1.33	1.26	1.36
1984	1.50	1.41	1.70
1985	1.38	1.20	1.57
1986	1.48	1.22	1.81
1987	1.80	1.51	2.42
1988	1.83	1.53	2.57
1989	1.74	1.40	2.49
1990	1.63	1.32	2.42
1991	1.48	1.10	2.12
1992	1.68	1.19	2.69
1993	1.84	1.26	3.27
1994	1.93	1.47	3.77
1995	2.11	1.50	3.96
1996	2.18	1.55	4.15
1997	2.20	1.58	4.31
1998	2.03	1.63	4.47
1999	2.02	1.66	4.43
2000	1.98	1.62	4.08
2001	1.36	1.06	2.73
2002	1.20	0.89	2.34
2003	1.57	1.16	3.29

² NFC net corporate assets at replacement cost are calculated using data from the Federal Reserve Flow of Funds accounts. They equal assets at replacement cost, as provided by the accounts, minus credit market debt adjusted to market values from the book values provided by the accounts using a perpetual inventory method described in the Appendix. Because we do not have a breakdown of NFC assets into those of C and S corporations, we assume that the share of net NFC assets accounted for by C corporations is the same as the C corporation share of gross assets, at book value, based on annual assets of active corporations (excluding those in Finance, Insurance and Real Estate) as reported by the IRS.

While NFC revenues as a share of GDP fluctuated with the business cycle but without any obvious trend between 1983 and 2003, these revenues as a share of CNFC assets have increased over the same period. The difference in trends between columns 2 and 3 reflects the fact that the size of the nonfinancial C corporation sector, as measured by assets, has been falling relative to GDP and other aggregate measures of activity. Indeed, GDP grew over 2.6 times more rapidly over the two decades between 1983 and 2003. Part of this decline in the importance of CNFC assets comes from the increase in the share of corporate assets held by S corporations. But, in terms of pure accounting, the slow growth in NFC assets as a whole and the increasing debt-assets ratio are much more important.³ I consider this decline in NFC assets further below.

The last column of Table 1 leaves us with a new question: why have corporate tax revenues *increased*, relative to their related asset base? To explore this question, Table 2 breaks down the ratio of taxes to assets into the product of two components, the ratio of taxes to profits – the average tax rate – and the ratio of profits to assets – the profit rate, where profits are an adjusted measure of CNFC profits, the calculation of which is described in the Appendix. The first two columns of the table provide this breakdown of the tax-assets ratio, repeated from Table 1 for convenience in the last column.

The profit rate, shown in Table 2's second column, has been strongly procyclical, rising with the expansion of the 1980s, falling slightly during the mild recession of 1990-91, rising very sharply during the extended boom later in the 1990s, falling once again with the recession of 2001 and beginning to recover again in 2003. Profit rates were especially high during the period 1993-99, during which federal revenues, including not only corporate taxes

³ Our method of calculating net CNFC assets is to subtract NFC credit market debt from NFC assets and then multiply the resulting amount by the share of CNFC assets of all (C and S) NFC assets. Thus, the ratio of net CNFC assets to GDP is $r = f*a*(1-d)$, where f is the ratio of C assets to C + S assets, a is the ratio of total NFC assets to GDP, and d is the debt-assets ratio for the NFC sector. Decomposing the changes in r between 1983 and 2003 (in the order in which the terms appear in the expression for r), the rise in S corporations accounts for 9 percent of the decline in r , the decline in NFC assets relative to GDP accounts for 43 percent of the decline in r , and the increase in the NFC debt-assets ratio accounts for 47 percent of the decline in r .

but also individual income taxes, surged. But there is no obvious or significant trend in the rate of profit, which in recent years has fallen in the same range as at the beginning of the sample period.

Table 2. The Average Tax Rate and Corporate Profitability, 1983-2003

Year	Average Tax Rate	CNFC Profit Rate	NFC Taxes/CNFC Assets
1983	27.02	5.03	1.36
1984	23.84	7.11	1.70
1985	21.91	7.17	1.57
1986	26.24	6.89	1.81
1987	29.51	8.19	2.42
1988	24.65	10.41	2.57
1989	28.31	8.78	2.49
1990	27.18	8.90	2.42
1991	28.91	7.35	2.12
1992	32.77	8.22	2.69
1993	29.97	10.89	3.27
1994	29.76	12.65	3.77
1995	30.60	12.96	3.96
1996	29.24	14.19	4.15
1997	30.09	14.32	4.31
1998	33.63	13.30	4.47
1999	36.87	12.02	4.43
2000	41.06	9.94	4.08
2001	49.23	5.55	2.73
2002	46.31	5.05	2.34
2003	45.23	7.27	3.29

The average tax rate, on the other hand, does show evidence of a trend, averaging below 25 percent during the first few years of the sample⁴ and exceeding 40 percent in every year since 2000. Although year to year fluctuations make higher frequency trends more difficult to discern, the average tax rate appears to have increased in the late '80s and once again in the late '90s, with the period in between, from around 1987-1997, characterized by a tax rate relatively stable around 30 percent. The first of these increases is consistent with what one might have expected, as it coincides with the passage of the Tax Reform Act of 1986, which sought to increase the share of federal revenues coming from the corporate income tax. But the much larger increase in recent years has no obvious legislative explanation, and the concern about corporate tax shelters and heightened corporate tax avoidance already discussed would seem to have predicted a movement in the other direction.

III. A Decomposition of Changes in the Average Tax Rate

Table 3 sheds light on these movements in the average tax rate, breaking them down into six mutually exclusive components, the construction of which is described in the Appendix. The first column of the table shows the statutory corporate tax rate for the corresponding year, while the last column shows the average tax rate, repeated from Table 2. The columns in between show the contributions of different factors to the gap between the statutory and average tax rates, with positive components increasing the average tax rate and negative components decreasing them.

The second column of Table 3 is labeled "capital recovery" and (when negative) accounts for reductions in the average tax rate attributable to investment-related tax benefits greater than what would be provided by economic depreciation deductions. This component also accounts for the use of historic cost in measuring depreciation allowances, a factor that

⁴ The profit rates are somewhat higher and the average tax rates correspondingly lower for the period 1983-85 than those reported in the comparable table in Auerbach and Poterba (1987), the changes due primarily to revisions in the national income account components of the profit measure.

by itself would increase the average tax rate, but on balance capital recovery provisions have contributed to a reduction in the average tax rate. This was especially true until 1986, when the investment tax credit was repealed. In the years since, capital recovery provisions led to a relatively stable reduction in the average tax rate until 2002. The explanation for this recent rise is the fall in the rate of profit already discussed. Because capital recovery provisions are based on assets, rather than profits, a decline in the rate of profit will increase the ratio of capital recovery provisions to profits. Put another way, a tax benefit of a given absolute magnitude reduces the average tax rate more when profits and hence the taxes on those profits fall.

Table 3. Causes of Changing Average Tax Rates, 1983-2003

Year	Statutory Rate	Capital Recovery	Other Inflation	Tax Losses	Foreign Tax Effects	Progressivity	Other Factors	Average Tax Rate
1983	46.0	-22.9	-5.9	10.6	1.7	-3.6	1.0	27.0
1984	46.0	-19.8	-6.3	7.8	1.1	-3.8	-1.2	23.8
1985	46.0	-21.7	-6.4	9.6	0.0	-3.9	-1.7	21.9
1986	46.0	-15.9	-8.0	10.4	1.7	-4.9	-3.0	26.2
1987	40.0	-9.7	-5.8	6.1	3.2	-2.0	-2.2	29.5
1988	34.0	-7.0	-5.6	3.4	1.1	0.1	-1.4	24.7
1989	34.0	-7.0	-7.5	6.6	2.6	0.3	-0.5	28.3
1990	34.0	-5.9	-10.4	6.2	2.5	1.4	-0.6	27.2
1991	34.0	-4.6	-12.1	10.0	1.6	0.8	-0.8	28.9
1992	34.0	-4.7	-7.5	9.4	2.2	1.0	-1.6	32.8
1993	35.0	-4.7	-7.1	6.3	2.0	0.2	-1.7	30.0
1994	35.0	-4.8	-4.8	3.6	1.8	0.2	-1.2	29.8
1995	35.0	-5.1	-3.6	3.4	2.3	0.1	-1.5	30.6
1996	35.0	-5.4	-4.9	4.3	1.9	-0.1	-1.5	29.2
1997	35.0	-5.9	-4.9	4.9	2.1	0.3	-1.4	30.1
1998	35.0	-6.2	-4.9	8.8	2.4	-0.2	-1.3	33.6
1999	35.0	-6.8	-5.3	11.6	3.6	-0.2	-1.0	36.9
2000	35.0	-6.8	-7.7	18.3	3.9	-0.1	-1.7	41.1
2001	35.0	-8.1	-19.6	38.3	5.5	-0.4	-1.6	49.2
2002	35.0	-17.1	-13.4	35.9	6.1	-0.2	0.1	46.3
2003	35.0	-11.5	-10.2	30.1	2.8	-0.4	-0.5	45.2

The next column of Table 3, “other inflation,” accounts for two offsetting effects of inflation, the general overtaxation of profits due to inventory accounting (the understatement of the cost of goods sold) and the undertaxation of the economic gains on nominal liabilities. Once again, the net impact could go either way but throughout the period has on balance reduced average tax rates. As with capital recovery provisions, this component’s impact on the average tax rate has tended to be larger in low-profit years, *ceteris paribus*.

The factors considered thus far only deepen the puzzle of why average tax rates have risen in recent years. The next component, though, points strongly in the other direction. The column labeled “Tax Losses” takes account of changes in the average tax rate due to the asymmetric treatment of gains and losses under the corporate income tax. There are two pieces included in this component. First, firms with negative taxable income can deduct losses only to the extent that these losses can be carried back and offset against the profits of earlier years. Thus, the lack of a tax refund on losses not carried back increases the average tax rate. On the other hand, taxable firms may deduct losses carried forward from earlier years, thereby shielding current profits from taxation and lowering the average tax rate. Whether the net effect is to decrease or increase the average tax rate in a given year depends on whether deductions for previous net operating losses exceed current losses not carried back. While in principle the sign could go either way in a given year, in all years of the sample the net effect is positive, meaning that tax asymmetries increase the average corporate tax rate. As one would expect, the impact is cyclical, stronger in the early ‘90s, for example, than later in the decade once the economy boomed. But the recent pattern is truly remarkable, the addition to the average tax rate far exceeding that in earlier years, even during and just after recessions.

Table 4 provides a closer look at the recent behavior of this tax loss component. The table’s first column lists the income subject to tax for nonfinancial C corporations for the

years 1996-2003. This is the aggregate income of companies with positive taxable income and shows the expected cyclical pattern, peaking in 2000 and falling in nominal terms in the recession year 2001 and again in 2002 before recovering in 2003. The next column, listing the negative current income for remaining firms, holds the key to the recent growth in the importance of tax law asymmetries. Negative income grew sharply between 1996 and 2002 to the point that net income (income subject to tax plus negative income) was barely positive in 2002. Only a small portion of this negative income was carried back against the income on previous years' tax returns, as the next column of the table shows,⁵ and net operating deductions for previous losses offset only a small portion of these nondeductible current losses. As a result, nondeductible current losses net of NOL deductions rose from about 11 percent of income subject to tax in 1996-7 to around 44 percent in 2001-3.

Table 4. Elements of Tax Law Asymmetries, U.S. Nonfinancial C Corporations 1996-2003 (in billions of dollars)

Year	Income Subject to Tax	Negative Taxable Income	NTI Net of Carrybacks	NTI Net of CBs and NOLs
1996	478.6	-110.1	-95.7	-51.2
1997	508.9	-128.2	-109.2	-60.0
1998	550.2	-178.8	-152.0	-106.6
1999	580.9	-223.6	-193.9	-139.0
2000	638.7	-312.2	-270.9	-202.5
2001	528.1	-391.0	-293.1	-241.4
2002	486.5	-370.8	-264.2	-207.6
2003	554.3	-353.3	-301.1	-245.2

⁵ Because carrybacks are expressed as tax refunds rather than as deductions, I divide them by the effective tax rate on taxable income defined in the Appendix, $\tau\lambda$, to estimate the value of current losses carried back. This is consistent with expression (A3), which defines the contribution of losses to the average tax rate by multiplying negative taxable income and NOLs but not carrybacks by $\tau\lambda$.

The resulting recent impact on the average tax rate in Table 3 is substantially higher than in any year since 1983, and higher than in any year estimated by Auerbach and Poterba (1987), who found the largest increase in the average tax rate between 1959 and 1985 to have been 22 percentage points during the very serious recession year of 1982. As nondeductible losses translate into average tax rate increases based on the statutory rate, which was substantially higher in 1982 than in recent years (46 percent versus the current 35 percent), the contributions to the average tax rate in 2001-3 represent an impact of tax losses that is roughly double that of 1982.

How is one to explain this unprecedented significance of losses? It is true that the 2001 recession was relatively mild overall, but also that profits fell quite sharply around the same time. According to NIPA data, domestic profits of nonfinancial corporations (with capital consumption and inventory valuation adjustments) divided by the GDP deflator fell by 14 percent from 1981 to 1982, but by 38 percent from 1999 to 2001. The fall in real profits is stronger in both periods if one starts earlier at a relative peak, but still much stronger for the recent period – by 19 percent between 1979 and 1982 and by 43 percent between 1997 and 2001. But one reason for the higher recent drop in profits is that profits were very high before the drop, and Table 4 shows that losses were significant even during the high-profit boom years of the late 1990s.⁶ Moreover, losses remained large even as profits recovered in 2003. Thus, it appears that the increasing importance of losses is due not simply a downward shift in the distribution of the rate of profit among firms, but also a greater dispersion in the rate of profit, causing many firms to have losses even when the overall rate of profit is not low. Although this explanation is difficult to verify using aggregate data, it is consistent with recent empirical evidence of increasing idiosyncratic volatility of various real measures of firm performance. Surveying this evidence, Comin and Philippon (2005) argue that increases

⁶ In 1999, for example, negative taxable income was 38 percent of income subject to tax, close to the previous high of 42 percent ratio reached in the serious recession year 1982.

in product-market competition and capital market access have played a role in this increasing volatility.

How does the importance of tax losses relate to recent concerns about the viability of the corporate tax? While there has been concern about the possible understatement of income, it is difficult to see how tax shelters and heightened tax avoidance activity can be implicated, given that such activity would be of far less value to taxpayers without current tax liability or the ability to carry losses back. Indeed, as one tax avoidance strategy involves using transactions between parties with different tax status to reduce overall tax liability, one might have expected increases in tax avoidance behavior to have reduced the significance of nondeductible losses, with loss-making firms transferring such losses to taxable firms which could make better use of them.⁷

Returning to Table 3, none of the remaining three components are as important in explaining the gap between the statutory and average tax rates as those already considered. “Foreign Tax Effects” equals the taxes due on foreign source earnings in excess of foreign tax credits. Because we are measuring the tax rate relative to domestic profits, the taxes paid on foreign earnings represent an increase in the average tax rate. The contribution of this term has grown somewhat over time, with the increasing importance of multinational corporations. However, the very recent increase in 2001-2 is due to primarily to a reduction in the denominator of the tax rate calculation, domestic profits.

The next column of Table 3, labeled “Progressivity,” accounts for the fact that taxes before credits do not equal the product of the statutory tax rate and income subject to tax, as they would under a proportional tax system. There are two reasons for this. First, the corporate income tax structure has a small element of progressivity at very low levels of

⁷ The ability of firms without taxable income to transfer deductions to other firms through “safe harbor” leasing helped reduce the cross-firm dispersion of income in the early ‘80s, but this provision was repealed early in 1982. See Warren and Auerbach (1983)

income, which reduces the average tax rate. Second, the corporate minimum tax imposes an extra tax burden on some firms, thereby increasing the average tax rate. The net impact of these two offsetting effects is sometimes positive and sometimes negative, but always small in magnitude. The same is true of the remaining, residual category that picks up the effects of tax credits other than the investment and foreign tax credits and national income account revaluations.

In summary, the average tax rate on the domestic income of nonfinancial C corporations has increased in recent years, with the unprecedented impact of tax losses more than offsetting other factors tending to reduce corporate tax burdens.

IV. Factors in the Change in Corporate Tax Revenues

Table 3 provides an exhaustive decomposition of changes in tax revenues, given the profits of nonfinancial C corporations. As discussed in relation to Table 2, the rate of profit for such corporations exhibits no obvious trend. But there are factors that could reduce both net assets and profits, having no necessary impact on the rate of profit but still reducing corporate taxes. Two such factors, already discussed, are the increased debt-assets ratios of nonfinancial corporations and the growth of S corporations. The overall reduction in taxes associated with such factors is likely lower than the reduction in corporate taxes, because of the increased individual tax liabilities of recipients of interest payments and S corporation income. Nevertheless, it is interesting to consider the role that these factors may have played in the evolution of corporate tax collections.

Of course, it is impossible to know what corporate tax collections would have been without the growth of debt and S corporations, but we can get an idea of the magnitude with some simple calculations, in particular what corporate taxes would have been without interest deductions or if all S corporation profits had been taxed at the average tax rate in Tables 2 and 3. These effects of these two counterfactual calculations on NFC revenues as a share of

GDP are given in the second and third columns of Table 5, the first column of which repeats the series for actual revenues as a share of GDP from Table 1.

Table 5. Contributions to Changes in Corporate Tax Revenues, 1983-2003

Year	NFC Taxes as a Share of GDP			
	Actual	No Debt	No S Corps	Equal FOC Tax/Assets
1983	1.26	2.70	1.30	1.33
1984	1.41	2.89	1.46	1.48
1985	1.20	2.62	1.26	1.28
1986	1.22	2.60	1.29	1.29
1987	1.51	2.59	1.69	1.58
1988	1.53	2.52	1.72	1.60
1989	1.40	2.51	1.61	1.47
1990	1.32	2.36	1.48	1.39
1991	1.10	2.07	1.29	1.19
1992	1.19	2.04	1.46	1.28
1993	1.26	1.97	1.53	1.35
1994	1.47	2.23	1.80	1.56
1995	1.50	2.44	1.84	1.60
1996	1.55	2.38	1.94	1.66
1997	1.58	2.47	2.02	1.66
1998	1.63	3.02	2.11	1.68
1999	1.66	2.98	2.22	1.70
2000	1.62	3.19	2.20	1.65
2001	1.06	2.45	1.74	1.09
2002	0.89	1.96	1.54	0.91
2003	1.16	2.12	1.84	1.19

Eliminating interest deductions, of course, increases corporate tax revenues.⁸

However, there is no clear trend to this adjustment between 1983 and 2003, as the declines in the statutory corporate rate and the nominal interest rate over the period have offset the rise in debt-asset ratios. By contrast, taxing S corporation profits would have increased the growth rate of corporate tax collections, given the growth of S corporation assets and profits as a share of the corporate total, especially in recent years when C corporation profits declined so much.

The last experiment in Table 5 is motivated by another potential tax avoidance channel, profit shifting by multinationals. Over the years, some have suggested that both U.S. and foreign multinationals use transfer pricing and other mechanisms to shift taxable profits from the United States to lower-tax jurisdictions. In fact, this behavior has been seen as leading to increasing tax competition among countries and declines in statutory corporate tax rates (e.g., Devereux et al. 2002). The responsiveness of the location of both investment and profits to tax incentives is the subject of a considerable literature and beyond the scope of this paper, but the last column in Table 5 provides a measure of the potential importance of one channel through which such activity operates. The column indicates how much higher U.S. corporate taxes would have been if foreign-controlled U.S. subsidiaries, presumably with access to profit-shifting opportunities, had the same tax-assets ratio as other domestic corporations. Under this assumption, taxes of U.S. nonfinancial corporations would have been higher, because foreign-owned companies have consistently had lower tax-assets ratios. The effect is small throughout the period, given the relatively small gap between tax-assets

⁸ Simulating the elimination of interest deductions requires some calculation of the tax savings generated by those deductions, which is complicated by the fact that firms vary in their ability to deduct interest and any given firm's tax status is endogenous with respect to the interest deductions themselves. Graham (1999) produces estimates of the marginal tax rates before and after interest deductions for a large universe of firms, as well as means, medians, and other percentiles of the distribution of before-interest and after-interest marginal tax rates. To take account of the impact of interest deductions on tax status, I use the average of Graham's mean before-interest and mean after-interest marginal tax rates for each year in my sample, based on unpublished updates of the series in Graham (1999) kindly provided by John Graham.

ratios and the relatively small share of U.S. companies that are foreign-controlled. But there are many other channels for international tax avoidance and behavioral responses, as through the shifting abroad of profits by U.S.-owned companies and the movement of activities themselves, which would show up as a decline in assets in the United States.

V. Other Considerations

This paper has examined many of the factors contributing to the evolution of the corporate income tax as a revenue source in the United States, breaking these down into those affecting the average tax rate on corporate profits and those affecting corporate profits themselves. The measure of profits used has been based on profits declared for tax purposes, with a few transparent adjustments. As shown in Table 2, there has been no obvious trend in the rate of profit based on this measure, which suggests that the decline in the profits of CNFCs as a share of GDP is traceable to the decline in CNFC net assets, attributable to the growth of S corporations, increased debt-assets ratios, and the decline in the size of NFC assets. Part of the explanation for the decline in NFC assets may be a shift in domestic industrial composition from nonfinancial to financial activities, as discussed in relation to Table 1. But the downward trend in NFC assets may also be overstated by the focus on *tangible* assets. A more comprehensive asset measure that includes the value of capitalized intangibles would not only be larger, but likely would also have a different trend, given estimates of the increasing importance of intangible assets in relation to tangible assets.⁹ Including intangibles would increase estimated corporate assets, and also estimated corporate profits, given that most expenditures on intangibles are immediately expensed for

⁹ See Corrado, Hulten and Sichel (2006) for recent estimates of the growth of business intangible assets in the United States.

tax purposes and hence deducted from income.¹⁰ Thus, the estimated average tax rate would be reduced. The impact on the estimated rate of profit is ambiguous, but it is certainly possible that accounting for intangibles would reduce the estimated rate of profit,¹¹ and this would lend credence to arguments that the profits reported for tax purposes have been increasingly understated in recent years as the result of aggressive tax avoidance behavior.

Some have argued that there is a widening gap between profits declared to tax authorities and some measure of “true” profits, and cite this gap as evidence of increasing dependence on tax shelters. For example, Desai (2003) calculates that the standard adjustments to the income on tax returns yield predictions of book income falling increasingly short of actual book income over the course of the late 1990s. This could be evidence of understated tax income, but also possibly of overstated book income or increasing error in the adjustments in translating tax income into estimated book income. Desai argues in favor of the first of these hypotheses, but the evidence is necessarily indirect, given the nature of tax shelters. It is noteworthy, though, that the gap between book and tax income fell sharply after the late 1990s, actually becoming negative in 2001 (Plesko and Shumofsky 2004/5), suggesting perhaps that the unexplained gap between book income predicted from tax income and actual book income may have fallen as well. Even if the tax-book gap has declined or can be explained by other factors, though, the possible growth of tax shelters cannot be ruled out to the extent that they reduce both book and tax income measures. Thus, it is very difficult to estimate the extent to which tax shelters and aggressive tax planning arrangements reduce current corporate tax collections.

¹⁰ Replacing current expenditures on intangibles with a measure of the depreciation of the intangibles stock would reduce estimated expenses and hence increased estimated profits as long as expenditures exceed depreciation, i.e., the stock of intangibles is growing, as seems surely to be the case.

¹¹ This would be the case if the adjustment to profits, relative to the stock of intangibles, was smaller than the previously estimated rate of profit.

VI. Conclusions

As a share of GDP, U.S. federal tax revenues from nonfinancial corporations have held relatively constant since the early 1980s, after falling precipitously during the late 1960s and the 1970s. But this relative constancy masks offsetting trends in the ratio of nonfinancial C corporation profits to GDP (declining) and the average tax rate on this profits (increasing). The recent upward spike in the average tax rate is largely extent attributable to the importance of tax losses, and casts some doubt on the importance of tax planning activities as a vehicle for reducing corporate taxes. So, too, does the relative stability of the rate of profit, which might be expected to have declined had the understatement of profits for tax purposes been increasing. Still, the year-to-year volatility of the measured rate of profit as well as the possibility that assets are being increasingly understated by the exclusion of intangibles limits our ability to draw conclusions about the extent of tax shelters and other aggressive corporate tax avoidance activity.

The recent increase in the significance of tax losses may reflect a growing dispersion in profit outcomes among firms, which would be consistent with other recent evidence showing increasing firm-level volatility. To the extent that increased dispersion and volatility are not simply temporary phenomena, the asymmetry of the corporate tax takes on more importance as a source of distortion and cyclical instability, presenting different firms with different incentives to invest and discouraging investment during periods of low profitability. Thus, the recent strength of corporate tax revenues need not lessen the need for corporate tax reform.

Appendix

This appendix provides a brief review of the updated Auerbach-Poterba methodology and the data sources used, focusing on basic concepts and areas in which the methodology has been adapted. Further details are provided in Auerbach and Poterba (1987), as well as in

an unpublished data appendix, available upon request, which describes the assumptions, imputations and interpolations that were required to deal with missing data and to separate NFC corporate profits from all corporate profits, to break NFC corporate profits into those of C and S corporations and into those of foreign-owned and domestic-owned corporations, and to deal with changing data definitions in the National Income and Product Accounts.

The methodology calculates the average tax rate on domestic income of nonfinancial C corporations and decomposes this average tax rate into a number of components. By focusing on nonfinancial C corporations, we exclude the financial corporations that are subject to different tax rules and S corporations for which earnings are passed through to owners for tax purposes.

The first step in the methodology involves separate computations of taxes and profits for U.S. nonfinancial C corporations, using data from three sources, the National Income and Product Accounts produced by the Bureau of Economic Analysis (NIPA), information from tax returns compiled by the Statistics of Income division of the Internal Revenue Service (SOI), and the Flow of Funds Accounts of the Federal Reserve System (FOF). Although most of the data are available either online or from published tables and articles, some individual components have been obtained from unpublished sources.

Profits

The objective in estimating profits is to measure the real economic profits of nonfinancial C corporations. The measure is based on expression (A1):

$$\begin{aligned}
 \text{(A1)} \quad \text{Profits} &= \text{Income Subject to Tax (SOI)} + \text{Net Operating Loss Deductions} \\
 &\quad \text{(SOI)} + \text{Negative Taxable Income (SOI)} - \text{Foreign Source Income} \\
 &\quad \text{(SOI)} + \text{CCADJ (NIPA)} + \text{IVA (NIPA)} + \text{Debtgain (FOF)} \\
 &= \text{ISTT} + \text{NOL} + \text{NTI} - \text{FSI} + \text{CCADJ} + \text{IVA} + \text{DG}
 \end{aligned}$$

where the second, abbreviated version of the expression will be used below.

The first two components of this expression equal the income for tax purposes of taxable companies, before deductions for previous tax losses. The third component is the income of companies with no tax liability, so the first three components together equal the income of all companies. The fourth component is subtracted to obtain a measure of domestic income. The fourth and fifth components, the capital consumption and inventory valuation adjustments from the national income accounts, are needed to convert income for tax purposes into a measure of economic income. The final component of expression (A1) equals the gain to owners of corporations due to the inflation-induced decline in value of corporate liabilities, measured as the inflation rate multiplied by market value of the nonfinancial corporate credit-market debt.¹²

Because information on the breakdown between C and S corporations is available only for data obtained from SOI, we assume that the breakdown between C and S corporations of the three remaining components in (A1) is the same as the sum of the first four.

Taxes

No such breakdown of taxes between C and S nonfinancial corporations is needed, because only C corporations pay corporate income taxes. Taxes are defined using the expression:

$$\begin{aligned} \text{(A2) Taxes} &= \text{Income Taxes Before Credits (SOI)} - \text{Tax Credits (SOI)} \\ &\quad - \text{Carryback Refunds (NIPA)} + \text{Other Retabulations (NIPA)} \\ &= \tau \lambda \text{ISTT} - \text{CB} - \text{ITC} - \text{FTC} - \text{OC} + \text{RETAB} \end{aligned}$$

¹² The Flow of Funds Accounts provide only the book values of credit market debt. We convert this series of book values into a series of estimated market values using a perpetual inventory method, starting in 1968 with the assumption that market and book values were the same in that year and assuming that each year's gross issues of debt had a maturity of 30 years and carried level coupon payments at the year of issue's Baa corporate bond rate, taken from the *Economic Report of the President*.

where the second, abbreviated version will be used below. This version breaks tax credits into three components, the investment tax credit (ITC), the foreign tax credit (FTC) and other credits, and defines the parameter λ implicitly as the adjustment to the statutory tax rate, τ , required to make the product of income subject to tax (ISTT) and the tax rate equal to income taxes before credits. This adjustment accounts not only for the very minor progressivity in the regular corporate tax code, but also for variations in tax payments due to the application of the corporate minimum tax, which when applicable imposes a different tax base and a different tax rate.

Average Tax Rate Decomposition

Dividing expression (A2) by (A1) and rearranging terms yields:

$$(A3) \quad \text{Taxes/Profits} = \tau - \tau\lambda(\text{ccadj} + \text{itc}) - \tau\lambda(\text{iva} + \text{dg}) - [\tau\lambda(\text{noi} + \text{nti}) + \text{cb}] \\ - (\text{ftc} - \tau\lambda\text{fsi}) - \tau(1 - \lambda) - (\text{oc} - \text{retab})$$

where lower case variables equal the corresponding upper case variables in (A1) and (A2) divided by Profits as defined in (A1). Expression (A3) provides the breakdown used in Table 3, starting from the statutory tax rate, τ , and accounting for adjustments for, respectively, capital recovery, other inflation effects, tax losses, foreign tax effects, tax progressivity, and other factors. Each of these adjustments is defined as a reduction in the effective tax rate, but it is logically possible in most cases for the adjustments to increase taxes rather than decreasing them.

References

Auerbach, Alan J., 2006, "Who Bears the Corporate Tax?" in J. Poterba, ed., *Tax Policy and the Economy* 20, forthcoming.

- Auerbach, Alan J., and James M. Poterba, 1987, "Why Have Corporate Tax Revenues Declined?" in L. Summers, ed., *Tax Policy and the Economy* 1, pp. 1-28.
- Comin, Diego, and Thomas Philippon, 2005, "The Rise in Firm-Level Volatility: Causes and Consequences," in M. Gertler and K. Rogoff, eds., *NBER Macroeconomics Annual*, pp. 167-201.
- Corrado, Carol, Charles R. Hulten, and Daniel E. Sichel, 2006, "Intangible Capital and Economic Growth," NBER Working Paper 11948, January.
- Desai, Mihir A., 2003, "The Divergence between Book Income and Tax Income," in J. Poterba, ed., *Tax Policy and the Economy* 17, pp.169-206.
- Devereux, Michael P., Rachel Griffith and Alexander Klemm, 2002, "Corporate Income Tax Reforms and International Tax Competition," *Economic Policy* 17(2), October, pp. 450-495.
- Graham, John R., 1999, "Do Personal Taxes Affect Corporate Financing Decisions?" *Journal of Public Economics* 73(2), August, pp. 147-185.
- Mackie, James B., III, 1999, "The Puzzling Comeback of the Corporate Income Tax," *National Tax Association 92nd Annual Proceedings*, pp. 93-102.
- McLure, Charles E., Jr., 1979, *Must Corporate Income Be Taxed Twice?* Washington DC: Brookings Institution.
- Plesko, George A., and Nina L. Shumofsky, 2004-5, "Reconciling Corporation Book and Tax Net Income, Tax Years 1995-2001," *Statistics of Income Bulletin* 24(3), Winter, pp. 103-108.
- Poterba, James M., 1992, "Why Didn't the Tax Reform Act of 1986 Raise Corporate Taxes?" in J. Poterba, ed., *Tax Policy and the Economy* 6, pp.43-58.
- Warren, Alvin C., Jr., and Alan J. Auerbach, 1983, "Tax Policy and Equipment Leasing After TEFRA," *Harvard Law Review* 96(7), May, pp. 1579-1598.

CESifo Working Paper Series

(for full list see www.cesifo-group.de)

- 1724 Axel Dreher and Jan-Egbert Sturm, Do IMF and World Bank Influence Voting in the UN General Assembly?, May 2006
- 1725 Swapan K. Bhattacharya and Biswa N. Bhattacharyay, Prospects of Regional Cooperation in Trade, Investment and Finance in Asia: An Empirical Analysis on BIMSTEC Countries and Japan, May 2006
- 1726 Philippe Choné and Laurent Linnemer, Assessing Horizontal Mergers under Uncertain Efficiency Gains, May 2006
- 1727 Daniel Houser and Thomas Stratmann, Selling Favors in the Lab: Experiments on Campaign Finance Reform, May 2006
- 1728 E. Maarten Bosker, Steven Brakman, Harry Garretsen and Marc Schramm, A Century of Shocks: The Evolution of the German City Size Distribution 1925 – 1999, May 2006
- 1729 Clive Bell and Hans Gersbach, Growth and Enduring Epidemic Diseases, May 2006
- 1730 W. Bentley MacLeod, Reputations, Relationships and the Enforcement of Incomplete Contracts, May 2006
- 1731 Jan K. Brueckner and Ricardo Flores-Fillol, Airline Schedule Competition: Product-Quality Choice in a Duopoly Model, May 2006
- 1732 Kerstin Bernoth and Guntram B. Wolff, Fool the Markets? Creative Accounting, Fiscal Transparency and Sovereign Risk Premia, May 2006
- 1733 Emmanuelle Auriol and Pierre M. Picard, Government Outsourcing: Public Contracting with Private Monopoly, May 2006
- 1734 Guglielmo Maria Caporale and Luis A. Gil-Alana, Modelling Structural Breaks in the US, UK and Japanese Unemployment Rates, May 2006
- 1735 Emily J. Blanchard, Reevaluating the Role of Trade Agreements: Does Investment Globalization Make the WTO Obsolete?, May 2006
- 1736 Per Engström and Bertil Holmlund, Tax Evasion and Self-Employment in a High-Tax Country: Evidence from Sweden, May 2006
- 1737 Erkki Koskela and Mikko Puhakka, Cycles and Indeterminacy in Overlapping Generations Economies with Stone-Geary Preferences, May 2006
- 1738 Saku Aura and Thomas Davidoff, Supply Constraints and Housing Prices, May 2006

- 1739 Balázs Égert and Ronald MacDonald, Monetary Transmission Mechanism in Transition Economies: Surveying the Surveyable, June 2006
- 1740 Ben J. Heijdra and Ward E. Romp, Ageing and Growth in the Small Open Economy, June 2006
- 1741 Robert Fenge and Volker Meier, Subsidies for Wages and Infrastructure: How to Restrain Undesired Immigration, June 2006
- 1742 Robert S. Chirinko and Debdulal Mallick, The Elasticity of Derived Demand, Factor Substitution and Product Demand: Corrections to Hicks' Formula and Marshall's Four Rules, June 2006
- 1743 Harry P. Bowen, Haris Munandar and Jean-Marie Viaene, Evidence and Implications of Zipf's Law for Integrated Economies, June 2006
- 1744 Markku Lanne and Helmut Luetkepohl, Identifying Monetary Policy Shocks via Changes in Volatility, June 2006
- 1745 Timo Trimborn, Karl-Josef Koch and Thomas M. Steger, Multi-Dimensional Transitional Dynamics: A Simple Numerical Procedure, June 2006
- 1746 Vivek H. Dehejia and Yiagadeesen Samy, Labor Standards and Economic Integration in the European Union: An Empirical Analysis, June 2006
- 1747 Carlo Altavilla and Paul De Grauwe, Forecasting and Combining Competing Models of Exchange Rate Determination, June 2006
- 1748 Olaf Posch and Klaus Waelde, Natural Volatility, Welfare and Taxation, June 2006
- 1749 Christian Holzner, Volker Meier and Martin Werding, Workfare, Monitoring, and Efficiency Wages, June 2006
- 1750 Steven Brakman, Harry Garretsen and Charles van Marrewijk, Agglomeration and Aid, June 2006
- 1751 Robert Fenge and Jakob von Weizsäcker, Mixing Bismarck and Child Pension Systems: An Optimum Taxation Approach, June 2006
- 1752 Helge Berger and Michael Neugart, Labor Courts, Nomination Bias, and Unemployment in Germany, June 2006
- 1753 Chris van Klaveren, Bernard van Praag and Henriette Maassen van den Brink, A Collective Household Model of Time Allocation - a Comparison of Native Dutch and Immigrant Households in the Netherlands, June 2006
- 1754 Marko Koethenbueger, Ex-Post Redistribution in a Federation: Implications for Corrective Policy, July 2006

- 1755 Axel Dreher, Jan-Egbert Sturm and Heinrich Ursprung, The Impact of Globalization on the Composition of Government Expenditures: Evidence from Panel Data, July 2006
- 1756 Richard Schmidtke, Private Provision of a Complementary Public Good, July 2006
- 1757 J. Atsu Amegashie, Intentions and Social Interactions, July 2006
- 1758 Alessandro Balestrino, Tax Avoidance, Endogenous Social Norms, and the Comparison Income Effect, July 2006
- 1759 Øystein Thøgersen, Intergenerational Risk Sharing by Means of Pay-as-you-go Programs – an Investigation of Alternative Mechanisms, July 2006
- 1760 Pascalis Raimondos-Møller and Alan D. Woodland, Steepest Ascent Tariff Reforms, July 2006
- 1761 Ronald MacDonald and Cezary Wojcik, Catching-up, Inflation Differentials and Credit Booms in a Heterogeneous Monetary Union: Some Implications for EMU and new EU Member States, July 2006
- 1762 Robert Dur, Status-Seeking in Criminal Subcultures and the Double Dividend of Zero-Tolerance, July 2006
- 1763 Christa Hainz, Business Groups in Emerging Markets – Financial Control and Sequential Investment, July 2006
- 1764 Didier Laussel and Raymond Riezman, Fixed Transport Costs and International Trade, July 2006
- 1765 Rafael Lalive, How do Extended Benefits Affect Unemployment Duration? A Regression Discontinuity Approach, July 2006
- 1766 Eric Hillebrand, Gunther Schnabl and Yasemin Ulu, Japanese Foreign Exchange Intervention and the Yen/Dollar Exchange Rate: A Simultaneous Equations Approach Using Realized Volatility, July 2006
- 1767 Carsten Hefeker, EMU Enlargement, Policy Uncertainty and Economic Reforms, July 2006
- 1768 Giovanni Facchini and Anna Maria Mayda, Individual Attitudes towards Immigrants: Welfare-State Determinants across Countries, July 2006
- 1769 Maarten Bosker and Harry Garretsen, Geography Rules Too! Economic Development and the Geography of Institutions, July 2006
- 1770 M. Hashem Pesaran and Allan Timmermann, Testing Dependence among Serially Correlated Multi-category Variables, July 2006
- 1771 Juergen von Hagen and Haiping Zhang, Financial Liberalization in a Small Open Economy, August 2006

- 1772 Alessandro Cigno, Is there a Social Security Tax Wedge?, August 2006
- 1773 Peter Egger, Simon Loretz, Michael Pfaffermayr and Hannes Winner, Corporate Taxation and Multinational Activity, August 2006
- 1774 Jeremy S.S. Edwards, Wolfgang Eggert and Alfons J. Weichenrieder, The Measurement of Firm Ownership and its Effect on Managerial Pay, August 2006
- 1775 Scott Alan Carson and Thomas N. Maloney, Living Standards in Black and White: Evidence from the Heights of Ohio Prison Inmates, 1829 – 1913, August 2006
- 1776 Richard Schmidtke, Two-Sided Markets with Pecuniary and Participation Externalities, August 2006
- 1777 Ben J. Heijdra and Jenny E. Ligthart, The Transitional Dynamics of Fiscal Policy in Small Open Economies, August 2006
- 1778 Jay Pil Choi, How Reasonable is the ‘Reasonable’ Royalty Rate? Damage Rules and Probabilistic Intellectual Property Rights, August 2006
- 1779 Ludger Woessmann, Efficiency and Equity of European Education and Training Policies, August 2006
- 1780 Gregory Ponthiere, Growth, Longevity and Public Policy, August 2006
- 1781 Laszlo Goerke, Corporate and Personal Income Tax Declarations, August 2006
- 1782 Florian Englmaier, Pablo Guillén, Loreto Llorente, Sander Onderstal and Rupert Sausgruber, The Chopstick Auction: A Study of the Exposure Problem in Multi-Unit Auctions, August 2006
- 1783 Adam S. Posen and Daniel Popov Gould, Has EMU had any Impact on the Degree of Wage Restraint?, August 2006
- 1784 Paolo M. Panteghini, A Simple Explanation for the Unfavorable Tax Treatment of Investment Costs, August 2006
- 1785 Alan J. Auerbach, Why have Corporate Tax Revenues Declined? Another Look, August 2006