

Yang, Yongjie; Dimitrov, Dinko

Article — Published Version

Weak transitivity and agenda control for extended stepladder tournaments

Economic Theory Bulletin

Provided in Cooperation with:

Springer Nature

Suggested Citation: Yang, Yongjie; Dimitrov, Dinko (2020) : Weak transitivity and agenda control for extended stepladder tournaments, Economic Theory Bulletin, ISSN 2196-1093, Springer International Publishing, Cham, Vol. 9, Iss. 1, pp. 27-37, <https://doi.org/10.1007/s40505-020-00190-9>

This Version is available at:

<https://hdl.handle.net/10419/288888>

Standard-Nutzungsbedingungen:

Die Dokumente auf EconStor dürfen zu eigenen wissenschaftlichen Zwecken und zum Privatgebrauch gespeichert und kopiert werden.

Sie dürfen die Dokumente nicht für öffentliche oder kommerzielle Zwecke vervielfältigen, öffentlich ausstellen, öffentlich zugänglich machen, vertreiben oder anderweitig nutzen.

Sofern die Verfasser die Dokumente unter Open-Content-Lizenzen (insbesondere CC-Lizenzen) zur Verfügung gestellt haben sollten, gelten abweichend von diesen Nutzungsbedingungen die in der dort genannten Lizenz gewährten Nutzungsrechte.

Terms of use:

Documents in EconStor may be saved and copied for your personal and scholarly purposes.

You are not to copy documents for public or commercial purposes, to exhibit the documents publicly, to make them publicly available on the internet, or to distribute or otherwise use the documents in public.

If the documents have been made available under an Open Content Licence (especially Creative Commons Licences), you may exercise further usage rights as specified in the indicated licence.



<https://creativecommons.org/licenses/by/4.0/>



Weak transitivity and agenda control for extended stepladder tournaments

Yongjie Yang¹ · Dinko Dimitrov¹

Received: 25 November 2019 / Accepted: 6 July 2020 / Published online: 25 August 2020
© The Author(s) 2020

Abstract

A tournament graph over n players is weakly transitive at player p if it contains a Hamiltonian path (p_1, p_2, \dots, p_n) with $p_1 = p$ such that for all odd integers $i \leq n-2$ there is an arc from p_i to p_{i+2} . We show that weak transitivity at p suffices to make player p win any extended stepladder tournament of degree at most two.

Keywords Agenda control · Extended stepladder · Hamiltonian path · Knockout tournament · Weak transitivity

Mathematics Subject Classification C70 · D70 · D71

1 Introduction

Knockout tournaments are widely used when it comes to the selection of an alternative from a set of available options. These elimination formats are crucial for collecting important insights in the analysis of electoral systems (cf. Brams and Fishburn 2002; Laslier 1997) and also play a predominant role in sport competitions where one has to determine the winner among a set of players. In such settings it is usually assumed that the tournament organizer possesses reliable information, in the form of a (deterministic) tournament graph over the player set, about who would win the match between every two players. The tournament organizer then specifies a seeding which labels the leaves of a rooted binary tree by players with each internal node being reached by the winner between the two children. The player who reaches the root of the binary tree is the final winner of the knockout tournament.

✉ Yongjie Yang
yyongjiecs@gmail.com

Dinko Dimitrov
dinko.dimitrov@mx.uni-saarland.de

¹ Chair of Economic Theory, Saarland University, Saarbrücken, Germany

Agenda control has been defined in the work of Bartholdi et al. (1989) as a particular type of manipulation for knockout tournaments. Provided that the tournament organizer has a favorite player, the question of study is whether there exists a seeding in the rooted binary tree which makes this player the final winner of the knockout tournament. This problem has attracted a lot of attention in the literature with the main focus being on balanced rooted binary trees¹. It is known that the agenda control problem restricted to balanced rooted tree is NP-hard (Aziz et al. 2018). Moreover, the NP-hardness remains even if we further require the tournament organizer's favorite player to be a king² of the tournament graph (cf. Kim and Williams 2015). Strengthening the notion of a king node was shown to allow for efficiently constructible seedings making kings winners in balanced knockout tournaments (cf. Kim et al. 2017; Kim and Williams 2015). We refer the reader to the work of Williams (2016) for an excellent and detailed survey of the recent literature.

A well known necessary condition for a player p to win a knockout tournament is that every node in the tournament graph should be reachable from p via a Hamiltonian path, i.e., there should be a Hamiltonian path in the tournament graph starting at p (cf. Moulin 1988). This condition is also sufficient when the rooted binary tree of the knockout tournament is a stepladder (cf. Williams 2016, Claim 19.6).

In the present paper, we impose the following additional restriction on at least one such path (p_1, p_2, \dots, p_n) with $p_1 = p$ and n being the number of players: for all odd integers $i \leq n - 2$ there should be an arc from p_i to p_{i+2} . Clearly, this kind of weak transitivity "shortens" in a regular way the reachability from p of every node in the tournament graph. We show then in Sect. 3 that weak transitivity at p suffices to make player p win any extended stepladder of degree at most two. This class of knockout tournaments is formally defined and illustrated in Sect. 2, and it includes the standard stepladders for which the mentioned reachability condition has been shown to be crucial. Moreover, its importance has been demonstrated in the work of Arlegi and Dimitrov (2020) when it comes to the design of "fair" knockout tournaments in sports competitions. Using a suitable notion of "fairness", Arlegi and Dimitrov (2020) show that every such knockout tournament has to be an extended stepladder of degree at most two.

2 Preliminaries

In this section we reproduce some basic notions from graph theory. For a detailed introduction in the field we refer the reader to the textbooks (Bang-Jensen and Gutin 2008; West 2000).

¹ A balanced rooted tree is a rooted tree where the levels of the leaves differ at most one. A formal definition is provided in Sect. 2.

² A node v in a tournament graph is a king if for every other vertex u in the tournament either there is an arc from v to u , or there exists a third node w such that there is an arc from v to w and an arc from w to u . It is well-known that every tournament has at least one king (cf. Landau 1953). Moreover, the set of all kings in a tournament graph is exactly the so-called uncovered set of the tournament graph (cf. Shepsle and Weingast 1984; Yang and Guo 2017).

Graphs A graph is a tuple $G = (V, E)$, where V denotes a set of nodes and E a set of edges. For ease of exposition, we also use $V(G)$ and $E(G)$ to denote the node set and edge set of G , respectively. Two nodes are *adjacent* if there is an edge between them. The *degree* of a node is the number of nodes adjacent to it. A graph $G' = (V', E')$ is a *subgraph* of $G = (V, E)$ if $V' \subseteq V$ and $E' \subseteq E$. Moreover, if $E' = \{(u, v) \in E : u, v \in V'\}$, we say that G' is an *induced subgraph*, or more precisely, a subgraph of G induced by V' . A *simple path* (path for short) is a sequence (v_1, v_2, \dots, v_t) of nodes such that either $t = 1$, or $t \geq 2$ and there is an edge between v_i and v_{i+1} for all $i \in \{1, 2, \dots, t-1\}$. The *length of a path* is defined as the number of edges in the path. A graph is *connected* if there exists at least one path between every two nodes. A *cycle* in a graph G is a sequence (v_1, v_2, \dots, v_t) of nodes such that (v_1, v_2, \dots, v_t) is a path and there is an edge between v_1 and v_t in G .

Trees A *tree* is a connected graph without cycles. A *leaf* in a tree is a node of degree 1. A nonleaf node is also called an *internal node* of the tree. It is well-known that between every two nodes there is a unique path in a tree.

A *rooted tree* is a tree with a specific node called the *root*. Let T be a rooted tree with root r and with at least two nodes. Let $v \in V(T) \setminus \{r\}$ be a nonroot node, and let $(r, v_1, v_2, \dots, v_t, v)$ be the unique path from the root r to the node v . Then, the node v_t is called the *parent* of v , and consequently v a *child* of v_t . Moreover, all nodes except v in the path are called the *ancestors* of v , and v is called the *descendant* of these nodes. (Note that we do not regard v as a descendant of itself) It is a folklore that for any nonempty subset $L \subseteq V(T) \setminus \{r\}$ of nodes, there is a unique node v such that v is the ancestor of all nodes in L and, moreover, for any child u of v at least one node in L is not the descendant of u . This node v is referred to as the *least common ancestor* of L . For a node v in T , the *subtree of T rooted at v* , denoted by T_v , is the rooted tree with root v whose underlying graph is the subgraph of T induced by v and all descendants of v .

A *leaf-to-root path* in T is a path from a leaf node to the root. The *level* of a node v is the length of the unique path from v to the root. Hence, the root has level 0. By $\Gamma(T)$ we denote the set of all leaves of T , and $\Gamma(T, \ell)$ the set of all leaves of T of level ℓ . The *height* of T , denoted by $h(T)$, is the length of a leaf-to-root path with the maximum length. Therefore, it holds that $\Gamma(T) = \bigcup_{\ell=0}^{h(T)} \Gamma(T, \ell)$.

The *trunk* of T is the path from the root to the least common ancestor of the leaves in the highest level. The distance between a leaf v of T to the trunk of T is the length of the shortest path among all paths between this leaf and the nodes in the trunk. The *branch length* of T is the maximum distance between leaves and the trunk.

A *binary tree* is a rooted tree where each internal node has at most two children. A *full binary tree* is a binary tree so that every internal node has exactly two children. A full binary tree is *balanced* if the heights of all leaves differ at most one. In a full binary tree, two nodes having the same parent are called *siblings*. Clearly, every nonroot node in a full binary tree has a sibling.

A *stepladder* is a full binary tree such that the distance between every leaf to the trunk is exactly one. A full binary tree of branch length at most q is also called an *extended stepladder of degree q* (cf. Arlegi and Dimitrov 2020). Therefore, stepladders are exactly full binary trees of branch length 1. We refer to Fig. 1 for an illustration.

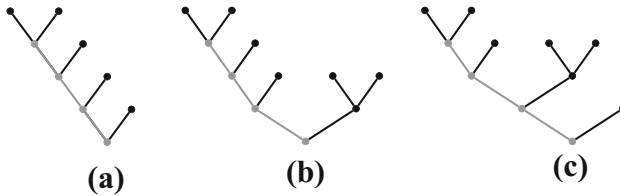


Fig. 1 An illustration of an extended stepladder of degree 1 (a) and two extended stepladders of degree 2 (b, c). The trunk in each tree is in gray

Tournament graphs Let P be a set of n players, $n \geq 2$. We assume that information is available about the match outcome (no ties) for every pair of players; that is, for $p \in P$ and $p' \in P \setminus \{p\}$, either p beats p' or p' beats p . This information is represented as a *tournament graph* over P , denoted by G_P . That is, G_P is a directed graph with node set P such that, for every two different players $p, p' \in P$, there is an arc from p to p' if and only if p beats p' . A *Hamiltonian path* in G_P is a sequence (p_1, p_2, \dots, p_n) of n different nodes such that there is an arc from p_i to p_{i+1} for all $i \in \{1, 2, \dots, n-1\}$.

Knockout tournaments For a set P of players and a rooted full binary tree T of $|P|$ leaves, a *seeding* is a one-to-one mapping from P to $\Gamma(T)$. A *knockout tournament* is a 4-tuple (P, T, φ, G_P) where φ is a seeding from P to $\Gamma(T)$, and G_P is a tournament graph over P . Given a knockout tournament (P, T, φ, G_P) , players reaching internal nodes of T are determined as follows. Initially, a player p occupies a leaf node v if $\varphi(p) = v$. Then, two players occupying two sibling-nodes compete, and the winner moves to the parent node. This procedure continues until some player reaches the root. The corresponding player is then called the *final winner* of the knockout tournament (P, T, φ, G_P) .

We use the notion $(P', T_v, \varphi', G_P[P'])$ for the knockout tournament restricted to the subtree of T rooted at node v . That is, $P' = \{p \in P : \varphi(p) \in \Gamma(T_v)\}$ is the set of all players seeded to the leaves of T_v by φ , φ' is the seeding which maps P' to $\Gamma(T_v)$ such that for every $p \in P'$ it holds that $\varphi'(p) = \varphi(p)$, and $G_P[P']$ is the subtournament of G_P induced by P' .

3 Weak transitivity and agenda control

As briefly elaborated in the Introduction, the weak transitivity of a tournament graph strengthens the mentioned necessary condition for making a distinguished player win a given knockout tournament. More precisely, we say that a tournament graph G_P is *weakly transitive* at some player p_1 if there is a Hamiltonian path $\triangleright = (p_1, p_2, \dots, p_n)$ in G_P such that for all odd integers $i \leq n-2$ there is an arc from p_i to p_{i+2} . We call \triangleright the *witness* of G_P at p_1 in this definition. (Note that if G_P is *weakly transitive* at some player p_1 , it may have more than one witness.) See Fig. 2 for an illustration of a weakly transitive tournament.

Our main result (Theorem 1) shows that, provided T is an extended stepladder of degree at most two, weak transitivity of G_P at some player $p \in P$ suffices for the existence of a seeding $\varphi : P \rightarrow \Gamma(T)$ making player p the final winner of



Fig. 2 A weakly transitive tournament. Note that not all arcs are shown. Missing arcs in the tournament can be set arbitrarily. That is, besides the displayed arcs, no additional restrictions are placed on how the other arcs should look like

the knockout tournament (P, T, φ, G_P) . Before unfolding this result, we present the following useful lemma.

Lemma 1 *Let T be a full binary tree with four leaves, $P = \{p_1, p_2, p_3, p_4\}$ a set of four players, and G_P a tournament graph over P such that p_1 beats p_2 and p_3 , and p_3 beats p_4 . Then there exists a seeding $\varphi : P \rightarrow \Gamma(T)$ making p_1 the final winner of (P, T, φ, G_P) ,*

Proof There are only two full binary trees with four leaves.

Figure 3 displays these two trees as well as the desired seedings making player p_1 the final winner of (P, T, φ, G_P) . □

Theorem 1 *Let P be a set of players, G_P a tournament graph over P , and T an extended stepladder of degree at most two with $n = |P|$ leaves. If G_P is weakly transitive at some player $p \in P$, then there is a seeding $\varphi : P \rightarrow \Gamma(T)$ making p the final winner of (P, T, φ, G_P) .*

Proof We proceed by induction. The assertion clearly holds when there are two or three players. Due to Lemma 1, the theorem holds when there are four players. Let us now assume that the statement is correct when there are at most k players and show that it also holds when there are $n = k + 1$ players, $k \geq 4$.

Let v and u be the two children of the root of T such that $|V(T_v)| \geq |V(T_u)|$. In addition, let (p_1, p_2, \dots, p_n) be a witness of G_P , where $p_1 = p$. So, p_1 beats both p_2 and p_3 . Moreover, for each positive integer $i \leq n$, let $P^{\geq i} = \{p_i, p_{i+1}, \dots, p_n\}$. As T has branch length at most two, it suffices to consider the following three cases.

Case 1: There are no leaves in the first level of T , i.e., $\Gamma(T, 1) = \emptyset$.

In this case, the subtree T_u must contain exactly two leaves and T_v contains exactly $n - 2$ leaves (see Fig. 4).

By induction, there is a seeding φ' from $P^{\geq 3}$ to the leaves of T_v so that p_3 is the final winner of $(P^{\geq 3}, T_v, \varphi', G_P[P^{\geq 3}])$. Then we construct the desired seeding $\varphi : P \rightarrow \Gamma(T)$ based on φ' as follows:

- $\varphi(p_i) = \varphi'(p_i)$ for all $p_i \in P^{\geq 3}$ and
- $\{\varphi(p_1), \varphi(p_2)\} = \Gamma(T_u, 1)$.

As p_1 beats both p_2 and p_3 , we know that p_1 is the final winner of (P, T, φ, G_P) .

Case 2: There is exactly one leaf in the first and second levels of T , respectively, i.e., $|\Gamma(T, 1)| = |\Gamma(T, 2)| = 1$.

Let x and y denote the two children of v , and without loss of generality, we assume that $|V(T_x)| \geq |V(T_y)|$ (see Fig. 5).

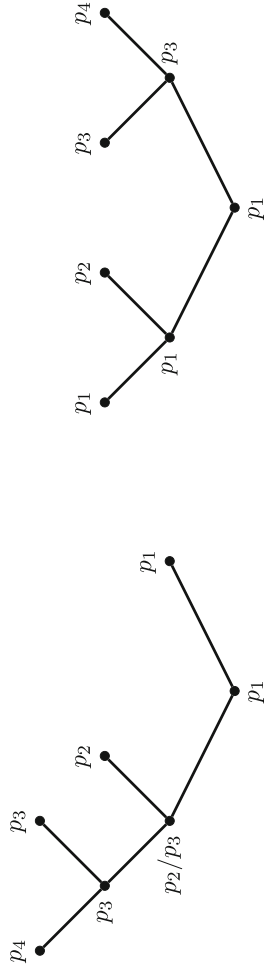


Fig. 3 The seedings in the proof of Lemma 1

Fig. 4 Illustration of the seeding in Case 1

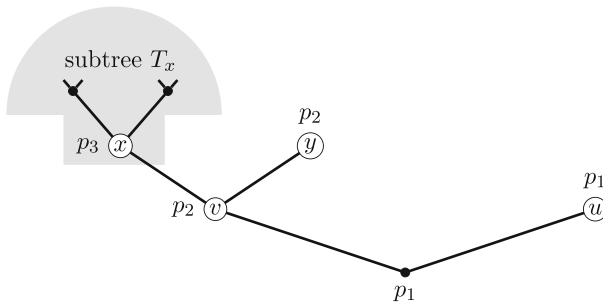
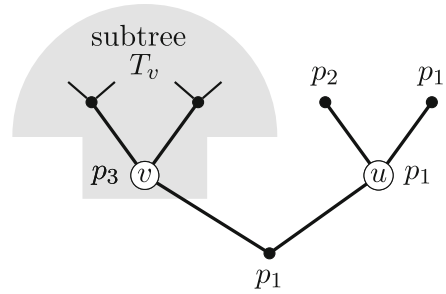


Fig. 5 Illustration of the seeding in Case 2

Due to the induction, there is a seeding φ' from $P^{\geq 3}$ to $\Gamma(T_x)$ such that p_3 is the final winner of $(P^{\geq 3}, T_x, \varphi', G_P[P^{\geq 3}])$. Then we construct the desired seeding $\varphi : P \rightarrow \Gamma(T)$ based on φ' as follows:

- $\varphi(p_i) = \varphi'(p_i)$ for all $p_i \in P^{\geq 3}$;
- $\varphi(p_2) = y$; and
- $\varphi(p_1) = u$.

It is easy to check that p_1 is the final winner of (P, T, φ, G_P) .

Case 3: There is exactly one leaf in the first level, but there are no leaves in the second level, i.e., $|\Gamma(T, 1)| = 1$ and $\Gamma(T, 2) = \emptyset$.

We further distinguish between the following two sub-cases.

Case 3.1: $|\Gamma(T, \ell)| \in \{0, 2, 4\}$ for each $\ell \in \{2, 3, \dots, h(T)\}$.

As T has branch length at most two, it must be that $|\Gamma(T, h(T))| = 4$ and $|\Gamma(T, \ell)| = 2$ holds for each $\ell \in \{3, 4, \dots, h(T) - 1\}$. Letting $t = h(T) - 1$, the number of players is then exactly $n = 2t + 1$ (odd number). Now we design a seeding φ from P to $\Gamma(T)$ as illustrated in Fig. 6.

The precise definition of the seeding is as follows. We divide the player set $\{p_3, p_4, \dots, p_{2t-2}\}$ into $t - 2$ subsets $P_3, P_5, \dots, P_{2t-3}$ such that each subset P_j , where $j \in \{3, 5, \dots, 2t - 3\}$, consists of the players p_j and p_{j+1} . We pair up the players in $P_3, P_4, \dots, P_{2t-3}$, one by one, in the leaves from the ones in the second-lowest level to the ones in the second-highest level, respectively. That is, for each

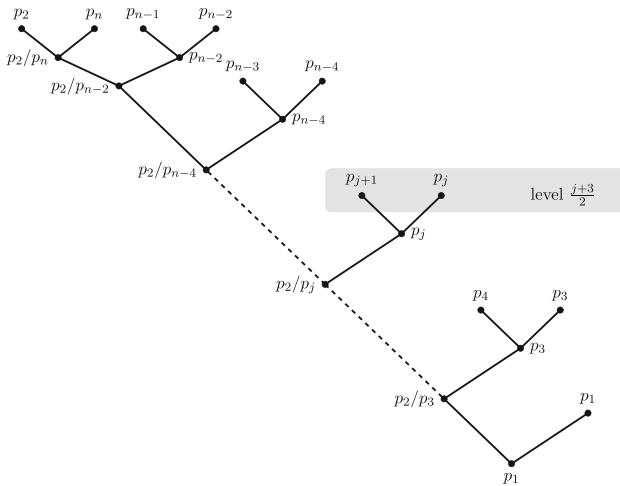


Fig. 6 Illustration of the seeding in Case 3.1

$j \in \{3, 5, \dots, 2t - 3\}$, we let $\{\varphi(p_j, p_{j+1})\} = \Gamma(T, \frac{j+3}{2})$. Then, we pair up p_2 and p_n , and pair up p_{n-1} and p_{n-2} in the highest level leaves. In other words, we set

$$\{\varphi(p_n), \varphi(p_{n-1}), \varphi(p_{n-2}), \varphi(p_2)\} = \Gamma(T, h(T)),$$

such that $\varphi(p_2)$ and $\varphi(p_n)$, and $\varphi(p_{n-1})$ and $\varphi(p_{n-2})$, respectively, are siblings in T . Finally, we seed p_1 to the first level leaf, i.e., $\{\varphi(p_1)\} = \Gamma(T, 1)$. As G_P is weakly transitive at p_1 with the witness (p_1, p_2, \dots, p_n) and n is odd, we know that p_{n-2} beats both p_n and p_{n-1} . This implies the player reaching the least common ancestor of the leaves in the highest level is either p_2 or p_{n-2} . Moreover, for each subset P_j , $j \in \{3, 5, \dots, 2t - 3\}$, the player reaching the parent of $\varphi(p_j)$ and $\varphi(p_{j+1})$ is p_j . Again, as G_P is weakly transitive at p_1 with witness (p_1, p_2, \dots, p_n) , for every $j \in \{3, 5, \dots, 2t - 3\}$, it holds that the player p_j beats the player p_{j+2} . As a consequence, the player reaching the parent of the parent of $\varphi(p_j)$ for each $j \in \{3, 5, \dots, 2t - 3\}$ is either p_2 or the player p_j . In other words, the player reaching a trunk node at level $\ell \geq 1$ is either p_2 or $p_{2\ell+1}$. Hence, either p_2 or p_3 reaches the second node in the trunk. As p_1 beats both p_2 and p_3 , we can conclude that p_1 is the final winner of (P, T, φ, G_P) .

Case 3.2: $|\Gamma(T, \ell)| = 3$ for some $\ell \in \{3, 4, \dots, h(T)\}$.

Let i be the smallest integer such that in the level i there are exactly three leaves. Let z denote the leaf in level i whose parent is in the trunk of T . Let w be the sibling of z (which is a trunk node in T). Obviously, there are exactly $2(i - 1)$ leaves of levels at most i , i.e., $|\bigcup_{\ell=1}^i \Gamma(T, \ell)| = 2(i - 1)$. Due to the induction, there is a seeding φ' from $P^{\geq 2i-1}$ to the leaves in the subtree rooted at w such that p_{2i-1} is the final winner of $(P^{\geq 2i-1}, T_w, \varphi', G_P[P^{\geq 2i-1}])$. We design a seeding φ from P to $\Gamma(T)$ as follows (see Fig. 7).

First, we seed players in $P^{\geq 2i-1}$ to the same nodes as in φ' , i.e., $\varphi(p_j) = \varphi'(p_j)$ for all $p_j \in P^{\geq 2i-1}$. Then, similar to Case 3.1, we divide the player set

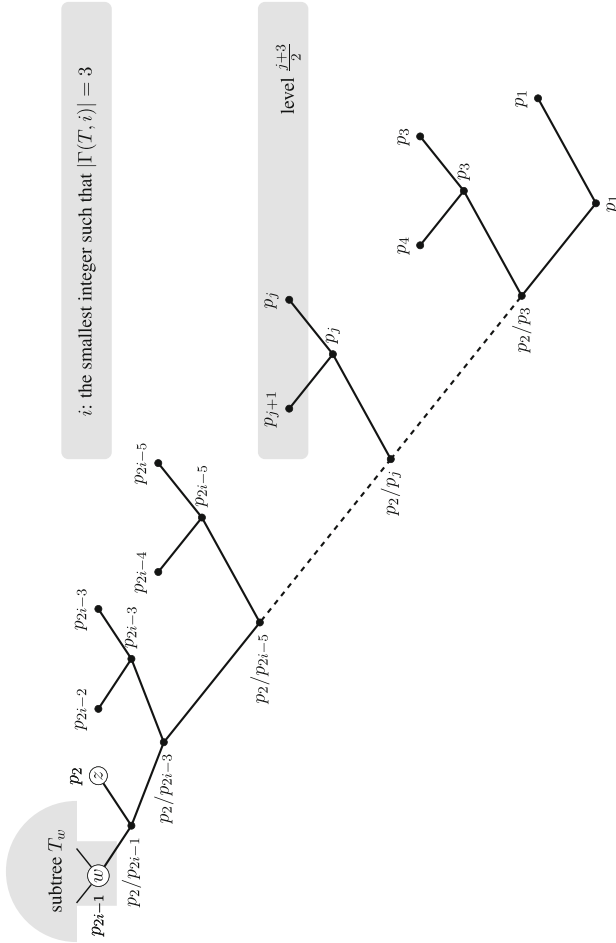


Fig. 7 Illustration of the seeding in Case 3.2

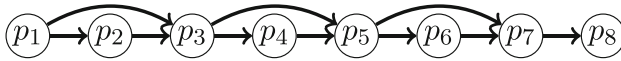


Fig. 8 A tournament graph over eight players. All missing arcs are backwards

$\{p_3, p_4, \dots, p_{2i-2}\}$ into $i - 2$ subsets $P_3, P_5, \dots, P_{2i-3}$ where $P_j = \{p_j, p_{j+1}\}$ for each $j \in \{3, 5, \dots, 2i - 3\}$. We seed p_1 in the first level leaf, and pair up players in each $P_j, j \in \{3, 5, \dots, 2i - 3\}$, in the leaves of level $\frac{j+3}{2}$. That is, we let $\{\varphi(p_1)\} = \Gamma(T, 1)$, let

$$\{\varphi(p_j), \varphi(p_{j+1})\} = \Gamma\left(T, \frac{j+3}{2}\right) \setminus \{z\}$$

for all $j \in \{3, 5, \dots, 2i - 3\}$. Finally, we seed p_2 to the leaf z , i.e., $\varphi(p_2) = z$. The player reaching then the parent of z is either p_2 or p_{2i-1} . Moreover, as G_P is weakly transitive with witness (p_1, p_2, \dots, p_n) , we know that p_j beats p_{j+1} and p_{j+2} for all $j \in \{1, 3, 5, \dots, 2i - 3\}$. As a consequence, the player reaching the parent of $\varphi(p_j)$ and $\varphi(p_{j+1})$ is p_j for all $j \in \{3, 5, \dots, 2i - 3\}$. Similar to Case 3.1, we can see that the player reaching a trunk node at level ℓ , where $\ell \leq i - 2$, is either p_2 or $p_{2\ell+1}$. Hence, either p_2 or p_3 reaches the second node in the trunk. As p_1 beats both p_2 and p_3 , we can conclude that p_1 is the final winner of (P, T, φ, G_P) . \square

Remark 1 Notice that the seedings constructed in Lemma 1 and Theorem 1 assign the distinguished player to a leaf in the lowest level of the corresponding rooted binary tree.

Let us finally provide an example showing that Theorem 1 does not extend to full binary trees of branch length at most three. For this, let the player set be $P = \{p_1, \dots, p_8\}$, the tournament graph G_P as shown in Fig. 8, and the rooted binary tree T be balanced of eight leaves (and thus an extended stepladder of degree three).

Clearly, G_P is weakly transitive at p_1 . Notice that a player has to win three matches in order to reach the root of T . Since p_1 beats only two players in G_P , we conclude that no seeding in T can make this player the final winner of the tournament.

Acknowledgements Open Access funding provided by Projekt DEAL. The authors would like to thank the editor and the anonymous reviewers for valuable comments that improved the paper.

Open Access This article is licensed under a Creative Commons Attribution 4.0 International License, which permits use, sharing, adaptation, distribution and reproduction in any medium or format, as long as you give appropriate credit to the original author(s) and the source, provide a link to the Creative Commons licence, and indicate if changes were made. The images or other third party material in this article are included in the article’s Creative Commons licence, unless indicated otherwise in a credit line to the material. If material is not included in the article’s Creative Commons licence and your intended use is not permitted by statutory regulation or exceeds the permitted use, you will need to obtain permission directly from the copyright holder. To view a copy of this licence, visit <http://creativecommons.org/licenses/by/4.0/>.

References

- Arlegi, R., Dimitrov, D.: Fair elimination-type competitions. *Eur. J. Oper Res* **287**(2), 528–535 (2020). <https://www.sciencedirect.com/science/article/abs/pii/S0377221720302393>. Accessed 17 Mar 2020
- Aziz, H., Gaspers, S., Mackenzie, S., Mattei, N., Stursberg, P., Walsh, T.: Fixing balanced knockout and double elimination tournaments. *Artif. Intell.* **262**, 1–14 (2018)
- Bang-Jensen, J., Gutin, G.: *Digraphs: theory algorithms and applications*. Springer, London (2008)
- Bartholdi, J.J., Tovey, C.A., Trick, M.A.: The computational difficulty of manipulating an election. *Soc. Choice Welf.* **6**(3), 227–241 (1989)
- Brams, S.J., Fishburn, P.C.: Voting procedures. In: Arrow, K.J., Sen, A.K., Suzumura, K. (eds.) *Handbook of Social Choice and Welfare*, pp. 173–236. Elsevier, Amsterdam (2002)
- Kim, M.P., Suksompong, W., Williams, V.V.: Who can win a single-elimination tournament? *SIAM J. Discrete Math.* **31**(3), 1751–1764 (2017)
- Kim, M.P., Williams, V.V.: Fixing tournaments for kings, chokers, and more. In: Yang, Q., Wooldridge, M.J. (eds.) *Proceedings of the Twenty-Fourth International Joint Conference on Artificial Intelligence IJCAI*, pp. 561–567. AAAI Press, Palo Alto (2015)
- Landau, H.: On dominance relations and the structure of animal societies: III the condition for score structure. *Bull. Math. Biophys.* **15**(2), 143–148 (1953)
- Laslier, J.F.: *Tournament solutions and majority voting*. Springer, Berlin (1997)
- Moulin, H.: *Axioms of Cooperative Decision Making*. Cambridge University Press, Cambridge (1988)
- Shepsle, K.A., Weingast, B.R.: Uncovered sets and sophisticated outcomes with implications for agenda institutions. *Am. J. Polit. Sci.* **28**(1), 49–74 (1984)
- West, D.B.: *Introduction to Graph Theory*. Prentice-Hall, Upper Saddle River (2000)
- Williams, V.V.: Knockout tournaments. In: Brandt, F., Conitzer, V., Endriss, U., Lang, J., Procaccia, A. (eds.) *Handbook on Computational Social Choice*, pp. 453–474. Cambridge University Press, Cambridge (2016)
- Yang, Y., Guo, J.: Possible winner problems on partial tournaments: a parameterized study. *J. Comb. Optim.* **33**(3), 882–896 (2017)

Publisher's Note Springer Nature remains neutral with regard to jurisdictional claims in published maps and institutional affiliations.