

Heinlein, Reinhold; Legrenzi, Gabriella D.; Mahadeo, Scott M. R.

**Working Paper**

## Exchange Rates and Sovereign Risk: A Nonlinear Approach Based on Local Gaussian Correlations

CESifo Working Paper, No. 11019

**Provided in Cooperation with:**

Ifo Institute – Leibniz Institute for Economic Research at the University of Munich

*Suggested Citation:* Heinlein, Reinhold; Legrenzi, Gabriella D.; Mahadeo, Scott M. R. (2024) : Exchange Rates and Sovereign Risk: A Nonlinear Approach Based on Local Gaussian Correlations, CESifo Working Paper, No. 11019, Center for Economic Studies and ifo Institute (CESifo), Munich

This Version is available at:

<https://hdl.handle.net/10419/296108>

**Standard-Nutzungsbedingungen:**

Die Dokumente auf EconStor dürfen zu eigenen wissenschaftlichen Zwecken und zum Privatgebrauch gespeichert und kopiert werden.

Sie dürfen die Dokumente nicht für öffentliche oder kommerzielle Zwecke vervielfältigen, öffentlich ausstellen, öffentlich zugänglich machen, vertreiben oder anderweitig nutzen.

Sofern die Verfasser die Dokumente unter Open-Content-Lizenzen (insbesondere CC-Lizenzen) zur Verfügung gestellt haben sollten, gelten abweichend von diesen Nutzungsbedingungen die in der dort genannten Lizenz gewährten Nutzungsrechte.

**Terms of use:**

*Documents in EconStor may be saved and copied for your personal and scholarly purposes.*

*You are not to copy documents for public or commercial purposes, to exhibit the documents publicly, to make them publicly available on the internet, or to distribute or otherwise use the documents in public.*

*If the documents have been made available under an Open Content Licence (especially Creative Commons Licences), you may exercise further usage rights as specified in the indicated licence.*

# Exchange Rates and Sovereign Risk: A Nonlinear Approach Based on Local Gaussian Correlations

*Reinhold Heinlein, Gabriella D. Legrenzi, Scott M. R. Mahadeo*

## **Impressum:**

CESifo Working Papers

ISSN 2364-1428 (electronic version)

Publisher and distributor: Munich Society for the Promotion of Economic Research - CESifo GmbH

The international platform of Ludwigs-Maximilians University's Center for Economic Studies and the ifo Institute

Poschingerstr. 5, 81679 Munich, Germany

Telephone +49 (0)89 2180-2740, Telefax +49 (0)89 2180-17845, email [office@cesifo.de](mailto:office@cesifo.de)

Editor: Clemens Fuest

<https://www.cesifo.org/en/wp>

An electronic version of the paper may be downloaded

- from the SSRN website: [www.SSRN.com](http://www.SSRN.com)
- from the RePEc website: [www.RePEc.org](http://www.RePEc.org)
- from the CESifo website: <https://www.cesifo.org/en/wp>

# Exchange Rates and Sovereign Risk: A Nonlinear Approach Based on Local Gaussian Correlations

## Abstract

We empirically assess the interlinkages between sovereign risk, measured in terms of CDS spreads, and exchange rates for a sample of emerging markets. Our period of analysis includes periods of severe stress, such as the Global Financial Crisis, the COVID-19 pandemic and the Ukrainian War. Using the most recent developments in local Gaussian partial correlation analysis and the associated nonlinear Granger causality tests, we are able to uncover linkages between assets across different segments of their joint distributions. Disentangling the effect of global factors, we show that the information on sovereign risk of other emerging economies is more relevant for the sovereign risk-exchange rate relationship than the state of developed markets risk for all countries in our sample and for all segments of the assets distribution. The same considerations apply for the movements of the US dollar relative to other currencies, where knowledge on movements of emerging currencies is of particular interest. Nonlinear Granger causality tests show bi-directional causality for most countries, confirming the importance of multiple transmission channels. Taken together, our results are of interest for international investors and policymakers, showing all interlinkages between sovereign risk and exchange rates across their entire distribution.

JEL-Codes: F310, G150.

Keywords: CDS, correlation, emerging markets, exchange rate, nonlinear causality, sovereign risk.

*Reinhold Heinlein\**

*Bristol Business School, University of the West  
of England, BS16 1QY / United Kingdom  
Reinhold.Heinlein@uwe.ac.uk*

*Gabriella Legrenzi*

*Keele Business School, University of Keele,  
ST5 5AA / United Kingdom  
g.d.legrenzi@keele.ac.uk*

*Scott M. R. Mahadeo*

*Portsmouth Business School, University of Portsmouth,  
PO1 3DE / United Kingdom  
scott.mahadeo@port.ac.uk*

\*corresponding author

March 19, 2024

# 1. Introduction

We empirically assess the relationship between sovereign risk and exchange rates based on a sample of open emerging market economies over the last two decades, allowing us to investigate these economies under periods of severe economic stress, represented by the Great Financial Crisis, the COVID-19 pandemic and the Ukrainian war, all events which have put considerable pressure on public finances worldwide, resulting in record high levels of sovereign debt, with the consequent enhancement of sovereign risk. Our focus on emerging markets is motivated by their documented vulnerability to sovereign risk, with different countries in our sample having experienced different episodes of default in their history<sup>1</sup>, as well as their high levels of dependency on foreign-denominated sovereign debt given their “original sin” (see, e.g., [Eichengreen and Hausmann, 2019](#), [Hausmann and Panizza, 2003](#)), becoming consequently more vulnerable to exchange rate fluctuations. As shown by [Reinhart et al. \(2003\)](#), a country’s history of default raises the risk of a future default, as the market perceives past defaulters as particularly risky beyond what can be explained by their economic fundamentals. As a consequence, sovereign risk is an issue of particular concern for emerging economies, given its potential negative repercussions on investment and growth prospects.

Sovereign risk has become more prominent during the most recent crises. In particular, in the wake of the COVID-19 pandemic, the average debt-to-GDP ratio in emerging markets surged to a record 67% (against a pre-pandemic ratio of 52%), and their bank exposure to sovereign debt has reached historic heights ([IMF, 2021](#)), thereby intensifying the sovereign-bank nexus, which makes emerging markets particularly vulnerable to “doom loops” ([Mitchener and Trebesch, 2023](#)). Whilst sovereign debt levels have reached record-high levels across the world, emerging markets are more vulnerable than advanced economies given their limited fiscal space, with higher debt-to-GDP burdens and higher refinancing risks, given the shorter average maturity of their debt, compared to advanced economies. Furthermore, it has been shown that a sovereign downgrade reduces, on average, firms’ investment ratios by almost 17% ([IMF, 2022](#)), confirming the prominent importance of sovereign risk.

As emerging markets have a tendency to exhibit higher levels of debt denominated in foreign currency, the link between sovereign risk and exchange rates acquires particular relevance, as these countries are particularly vulnerable to adverse effects arising from currency mismatch in their external balance sheets, due to their relatively less developed financial systems and the consequent tendency to have unhedged foreign currency debt ([Kearns and Patel, 2016](#)). There is indeed a growing consensus that the presence of a currency mismatch exposes the country to balance sheet effects in the event of real exchange rate adjustment. In addition, the anticipation of these effects may by itself trigger self-fulfilling currency or liquidity runs. This view has found empirical support in many studies that highlight the role played by currency mismatches in the run-up to financial crises (see, e.g., the discussion in [Cowan et al., 2006](#)).

The relationship between exchange rates and sovereign risk is rather complex, being influenced by different channels (such as trade and financial balances as well as the risk premium) which postulate different signs and causality

---

<sup>1</sup>In particular, the Latin American countries in our sample have experienced different episodes of debt restructuring/defaulting, particularly during the Latin American Debt Crisis (Mexico, Peru in 1984, Brazil in 1990, Chile). Similar considerations apply to some of the Asian economies, Thailand in particular, which experienced defaults/debt restructuring during 1997-2007. Poland defaulted in 1981 and Turkey in 1992.

links between the two financial variables, and, in spite of its topical importance, it is a relatively under-researched area. Furthermore, the costs of sovereign defaults are strictly connected to a country's exchange rate, thereby providing further signals to investors and policymakers. 35

Credit Default Swaps (CDS) are useful indicators of credit risk (Blanco et al., 2005) and are attributed as a source of financial contagion and distress, even in analyses prior to the Global Financial Crisis (GFC) debacle of 2008/2009 (see, e.g., Jorion and Zhang, 2007), in its wake (see, e.g., Stulz, 2010), and in the subsequent Eurozone sovereign debt crisis of 2010/2011 (see, e.g., Augustin et al., 2016).

Sovereign CDS spreads provide a more timely and accurate market information relative to default risk compared to sovereign interest rate spreads and credit ratings. This is because sovereign credit ratings are changed at lower frequencies, and the sovereign CDS market is more liquid than the underlying sovereign bonds market, being based on highly standardised legal documents (see, e.g., Della Corte et al., 2022, Duffie, 1999, Longstaff et al., 2005 and Longstaff et al., 2011). 40

Whilst many studies support a negative relationship between sovereign risk and exchange rates, in line with the twin D hypothesis (see Della Corte et al., 2022, and literature therein), there is alternative evidence of a positive correlation between the two (see Ojeda-Joya and Sarmiento, 2018, and literature therein) and results differ according to methodology and sample considered. At the same time, the causality link has not been adequately considered within the existing literature and existing studies have traditionally relied on a linear framework for Granger-causality tests (see Della Corte et al., 2022 ) ignoring potential nonlinear links. 45

Whilst our analysis is focussed on sovereign risk, our findings are also useful for the corporate debt, given the relationship between the two embedded in the sovereign ceiling (i.e. the fact that the risk associated with corporate bonds in a given country cannot exceed its sovereign risk), with strong empirical evidence in favour of the presence of event risk transfer, in the form of credit risk transmission from sovereign to corporate, following sovereign downgrades (see, e.g., Fornari and Zaghini, 2022). 50

As from the above discussion, it will be important for policymakers and investors to understand the sign and nature of the relationship between sovereign risk and exchange rates, particularly at a high data frequency, in order to predict future scenarios as well as enact adequate debt management and exchange rate policies. Our contribution to the literature consequently aims to answer to the following original research questions: (i) what is the nature of the relationship between sovereign risk and exchange rates for the case of emerging economies? (ii) does the above relationship change across different segments of the assets distribution? and, (iii) can we identify the causality link between exchange rates and sovereign risk allowing for possible nonlinearities? 55

Our chosen empirical methodology is based on the most recent developments of the Local Gaussian Partial Correlation (LGPC), using daily data on sovereign risk and exchange rates. The LGPC provides the remarkable advantage of allowing us to evaluate correlations considering all segments of the returns distribution, allowing us also to condition on global factors which could impact on such relationship. Within this framework, we also test for asymmetries and nonlinear causality links which are not detected within traditional linear causality tests. 60

## 2. Literature Review

From the seminal works of [Eaton and Taylor \(1986\)](#) and further research fuelled by the Latin American debt crisis, the concept of sovereign risk has been extensively explored, including from historical and legal perspectives (given the long history of debt in many emerging economies as well as the complexities associated with the legal definition of a sovereign default/restructuring, triggering CDS payments, see, e.g., the discussion in [Fang et al., 2021](#)). Most of the literature has focussed on the pricing of sovereign risk (see, e.g., [Beirne and Fratzscher \(2013\)](#) and literature therein), or the costs and consequences of sovereign defaults (see, e.g., [Borensztein and Panizza \(2009\)](#) and literature therein).

In contrast to the above, the literature examining the relationship between exchange rate risk and sovereign risk is rather scant, in spite of its topical importance, and is unable to provide an unambiguous link.

Earlier literature, following [Reinhart \(2002\)](#), [Reinhart and Rogoff \(2009\)](#) [Manasse and Roubini \(2009\)](#) has focussed on the twin D, i.e. the link between sovereign defaults and devaluations, showing that defaults are typically associated with currency depreciations, based on datasets of historical defaults. In particular, [Reinhart \(2002\)](#) shows that 84% of the defaults in her sample are preceded by currency crises. As actual defaults are relatively rare events, more recent literature focusses on the risk of sovereign default, i.e. sovereign risk.

From a theoretical perspective, considering the *trade channel*, other things being equal, a domestic appreciation is expected to have a contractionary effect on the domestic economy, due to the resulting loss in international competitiveness, which is associated with a decrease in net exports and resulting contraction in output. Such contractions will put pressure on public finances, resulting in an increased sovereign risk. This implies a positive link between sovereign risk and exchange rates, with a causality direction arising from the exchange rate to the sovereign risk. The trade channel should nevertheless work in different ways for net importers/exporters.

The *financial channel*, on the other hand, postulates that a domestic appreciation (depreciation) decreases (increases) the value of liabilities denominated in foreign currency, hence reducing (increasing) the risk of sovereign default, pointing to a negative association between exchange rates and sovereign risk, with a causality direction from exchange rates to sovereign risk.

The *currency risk premium channel*, documented by [Della Corte et al. \(2022\)](#), shows that countries that experience an increase in their sovereign risk exhibit, at the same, a significant depreciation in their exchange rate. This points to a contemporaneous negative relationship between sovereign risk and exchange rates. A plausible explanation relies in the existence of a risk-based channel linking sovereign risk and currency markets: an increase in the perceived sovereign risk of a given country will make investors require a higher risk premium for holding assets denominated in that currency in their portfolios (see, e.g., [Lustig et al., 2011](#)).

From a *political economy perspective*, debt held by non-residents presents an enhanced level of risk, given the difficulty in enforcing cross-border contracts in absence of a supra-national authority, enhanced by the fact of a lack of creditor's rights to vote on domestic issues such as fiscal restructuring. As a result, an increase in the risk premium associated with government bonds will imply a welfare loss for the domestic economy, transferring resources abroad

which is usually accompanied by depreciations in the exchange rate (Gros, 2013), implying therefore a causality from sovereign risk to exchange rates. Furthermore, as the costs of sovereign defaults are strongly connected to the value of a country's currency and will dramatically increase upon depreciations (Borensztein and Panizza, 2009), different incentives will be provided to policymakers. 105

Looking at the relevant empirical evidence, Longstaff et al. (2011) document that sovereign credit spreads increase when the local currency depreciates relative to the USD, within a monthly panel of emerging economies. Augustin et al. (2020) look at the joint dynamics of quanto spreads and USD/EUR exchange rates for 17 Eurozone countries, finding relevant comovements.

Della Corte et al. (2022), using a dataset of monthly data over 40 developed and emerging countries from 2003 to 2017, identify a strong and robust negative contemporaneous relationship between CDS spreads and exchange rates: an increase in a country's sovereign risk is accompanied by a contemporaneous depreciation of its domestic currency. This effect becomes stronger when restricting the sample to countries with floating exchange rates and/or open capital accounts. Such result is aligned with the twin D theory, considering the risk of sovereign default rather than actual defaults. 110

Bernoth and Herwartz (2021), considering monthly data of 16 major emerging market economies, find that a depreciation of the domestic currency against the USD increases sovereign risk. 115

Liu et al. (2023) empirically investigate the time-frequency comovements between sovereign CDS and exchange rates for a sample of BRICs and European countries, applying wavelet methodologies to monthly and weekly data. Their findings reveal that the relationship between CDS and exchange rates is mainly driven by market sentiments embedded by the VIX and the crude oil volatility index. Surprisingly, connectedness between the two is generally low and unaffected by the commodity importer/exporter of the country investigated. That said, their use of lower frequency data implies that macroeconomic factors affecting such relationships have been mediated by the market sentiments. In a related paper, Feng et al. (2021) analyse the volatility spillovers between exchange rates and CDS for a sample of G7 and BRICS economies, finding evidence in favour. 120

Overall, existing empirical evidence provides ambiguous results on the interlinkages between sovereign risk and exchange rates. We note nevertheless that the above studies are focussed on mean-based concepts of interlinkages and do not consider the different segments of the underlying assets distribution, and, consequently, rely on linear measures of conditional independence. We aim to overcome the above described limitations with our proposed empirical methodology. 125

### 3. Methodology 130

Given the above discussion, we base our empirical analysis on the latest developments in the local Gaussian partial correlation, which overcomes the excessive restrictions of the Gaussian assumptions, by fitting a family of Gaussian distributions to a given multivariate distribution, being therefore more adequate to study the behaviour of our variables



135 which typically exhibit skewness, excess kurtosis and outliers. Our chosen methodology has the advantage of provid-  
ing a measure of conditional dependence which can be studied across the different segments of the assets distribution,  
improving on existing measures of dependence. Furthermore, our adoption of nonlinear Granger causality tests allows  
us to gain a better understanding of the relationship between CDS and exchange rates, capturing nonlinear links which  
will not be detected by traditional (linear) tests.

### 140 3.1. Local Gaussian correlation

Local Gaussian correlation has been introduced by [Tjøstheim and Hufthammer \(2013\)](#). The bivariate density  $f$  for two  
random variables  $X_1$  and  $X_2$  with observed values  $(X_{1i}, X_{2i}), i = 1, \dots, n$  is usually not Gaussian. The unknown density  
can be approximated locally with a family of Gaussian distributions. In a neighbourhood of each point  $x = (x_1, x_2)$ ,  
we fit a Gaussian bivariate density to approximate the density  $f(x)$ :

$$\begin{aligned}
145 \quad \phi_x &= \phi(u, v, \mu_1(x), \mu_2(x), \sigma_1(x), \sigma_2(x), \rho(x)) \\
&= \frac{1}{2\pi\sigma_1(x)\sigma_2(x)\sqrt{1-\rho(x)^2}} \exp\left\{ -\frac{1}{2(1-\rho(x)^2)} \times \left[ \left(\frac{u-\mu_1(x)}{\sigma_1(x)}\right)^2 + \left(\frac{v-\mu_2(x)}{\sigma_2(x)}\right)^2 \right. \right. \\
&\quad \left. \left. - 2\rho(x)\left(\frac{u-\mu_1(x)}{\sigma_1(x)}\right)\left(\frac{v-\mu_2(x)}{\sigma_2(x)}\right) \right] \right\} \quad (1)
\end{aligned}$$

150 The parameters  $\mu(x), \sigma(x)$  and  $\rho(x)$  depend on  $x$ . The approximation  $\phi_x$  is close to  $f$  in a neighbourhood of  $x$ . The  
dependence structure of the pair of random variables is described by the correlation  $\rho(x)$ . By having a local approxi-  
mation of the bivariate density, and hence an estimate of a local correlation, the approach is capable of detecting and  
quantifying nonlinear dependence structures. The Gaussian densities  $\phi_x$  are fitted to  $f$  in the neighbourhood of  $x$  with  
the method of local likelihood (see [Tjøstheim and Hufthammer, 2013](#)).

### 155 3.2. Testing for asymmetry in tail dependence

In the spirit of the literature on exceedance correlation (see [Longin and Solnik, 2001](#), and [Ang and Chen, 2002](#)),  
we test for symmetry in the correlation between CDS and exchange rates, for large increases and large decreases in  
sovereign risk. This is of particular relevance for policy purposes, allowing to verify how correlations change during  
extreme values of sovereign risk. We test the following hypothesis:

$$\begin{aligned}
160 \quad H_0^p &: \rho^-(p) = \rho^+(p) \\
H_1^p &: \rho^-(p) \neq \rho^+(p)
\end{aligned}$$

with  $\rho^-(p) = \text{corr}(X_{1t}, X_{2t}|x_{1t} < F_1^{-1}(p/100), x_{2t} < F_2^{-1}(p/100))$  and  $\rho^+(p) = \text{corr}(X_{1t}, X_{2t}|x_{1t} > F_1^{-1}((100 - p)/100), x_{2t} > F_2^{-1}((100 - p)/100))$ , whereby  $F_j^{-1}(\cdot)$  is a quantile function and  $p \in \{1, 2, 3, \dots, 100\}$  is a selected percentile. We estimate the correlation in the tails by approximating the unknown density locally by Gaussian distributions using the local Gaussian method.<sup>2</sup> 165

We perform a  $t$  test using the following test statistic:

$$t^p = \frac{1}{p} \sum_{i=1}^p \frac{\hat{\rho}^-(i) - \hat{\rho}^+(i)}{\sqrt{\hat{s}e(\hat{\rho}^-(i))^2 + \hat{s}e(\hat{\rho}^+(i))^2}}, \quad (2)$$

where  $\hat{\rho}^-(i)$  is the estimated local Gaussian correlation at the point  $(x_{1i}^-, x_{2i}^-)$  with  $x_{1i}^- = \hat{F}_1^{-1}(i/100)$  and  $x_{2i}^- = \hat{F}_2^{-1}(i/100)$  and  $\hat{\rho}^+(i)$  is the estimated local Gaussian correlation at the point  $(x_{1i}^+, x_{2i}^+)$  with  $x_{1i}^+ = \hat{F}_1^{-1}((100 - i)/100)$  and  $x_{2i}^+ = \hat{F}_2^{-1}((100 - i)/100)$ .<sup>3</sup> The critical values of the test can be retrieved from the standard normal distribution. 170

### 3.3. Local Gaussian partial correlation

Otneim and Tjøstheim (2022) introduce the local Gaussian partial correlation, which is a measure for conditional dependence. Assuming three random variables  $X_1, X_2$  and  $X_3$  with observed values  $(X_{1i}, X_{2i}, X_{3i}), i = 1, \dots, n$ , the partial correlation between  $X_1$  and  $X_2$  conditioning on  $X_3$  is studied.<sup>4</sup> The procedure of estimating the local Gaussian approximation can be simplified by first transforming each variable  $X_j$  into a standard normal variable  $Z_j = \Phi^{-1}(F_j(X_j))$  with  $F_j$  being the cumulative distribution function of  $X_j$  and  $\Phi$  is the standard normal cumulative distribution function (Otneim and Tjøstheim, 2017, 2018). The transformation allows to simplify the local Gaussian approximation by writing the density of  $f_Z$  of  $Z$  at the point  $z = (z_1, z_2, z_3)$  as: 175

$$f_Z(z) = \psi(z, R(z)) = \frac{1}{|2\pi R(z)|^{1/2}} \exp\left\{-\frac{1}{2}z^T R^{-1}(z)z\right\}, \quad (3) \quad 180$$

whereby local means and standard deviations are fixed,  $\mu_j(z) \equiv 0$  and  $\sigma_j^2(z) \equiv 1$ , and where  $R(z) = \rho_{jk}(z)$  is the local correlation matrix. The local Gaussian partial correlation  $\alpha(z) = R_{12|3}(z)$  between  $Z_1$  and  $Z_2$  given  $Z_3$  can be computed using  $R(z)$  (see Otneim and Tjøstheim, 2022).

<sup>2</sup>Using the local Gaussian approach is advantageous, as it is robust to the well known conditioning bias.

<sup>3</sup>As distribution functions  $F_j(x)$  are unknown, we replace them by the empirical distribution functions  $\hat{F}_j(x)$ . Note that due to our definition of the exchange rate that a decrease in the exchange rate is a devaluation of the local currency, we are interested in the negative diagonal in the second and fourth quadrant. We estimate 99 local Gaussian correlations on a diagonal grid between CDS changes and exchange rate returns at percentiles (1, 99), (2, 98), ... up to (99,1). The test statistic is an average of  $p$   $t$ -values covering a selected percentile of the tails. In the empirical part, we present results for  $t^5, t^{10}$  and  $t^{33}$ . It is reasonable to increase the number of points of measurement when testing for a larger quantile, for example we use 5 points of measurement when we test for asymmetry in a tail of 5 percentiles, while we use 10 points of measurement when we test for asymmetry in a larger tail of 10 percentiles. One could increase the number of points of measurement, but the results are not sensitive to this choice.

<sup>4</sup>The components,  $X_j$ , could be of higher dimension, for example  $X_3$  can be a vector of several conditioning variables.

### 3.4. Testing for conditional independence - nonlinear Granger causality

185 We adopt a nonlinear version of the Granger causality test, based on the local Gaussian partial correlation. When the local Gaussian partial correlation  $\alpha(z) \equiv 0$ , it corresponds to conditional independence,  $X_1 \perp X_2 | X_3$ , so  $X_1|X_3$  and  $X_2|X_3$  are independent. A measure of global conditional dependence can be computed as the following test statistic:

$$T_{n,b}^{CI} = \int_S h(\hat{\alpha}(z)) dF_n(z), \quad (4)$$

where  $h(\cdot)$  is a nonnegative real-valued function, we use  $h(x) = x^2$ ,  $S$  is an integration area and  $b$  is chosen by the 190 plug-in bandwidth selector.<sup>5</sup> The critical values of this test are calculated using the bootstrap under the null hypothesis by independently resampling replicates from the conditional density estimates  $\hat{f}_{X_1|X_3}(x_1|x_3)$  and  $\hat{f}_{X_2|X_3}(x_2|x_3)$  using an approximated accept-reject algorithm.

We use the conditional independence test to test for Granger causality. When the null hypothesis can be rejected, it is an indication of causality from  $X_t$  to  $Y_t$ :

$$195 H_0 : Y_t \perp X_{t-1} | Y_{t-1}$$

## 4. Data

We use daily data up to 2023/05/17 on CDS and exchange rates against the USD for a selection of emerging economies (Brazil, Chile, Colombia, Mexico, Peru, Czech Republic, Hungary, Poland, South Africa, Turkey, China, India, In- 200 donesia, Malaysia, Philippines and Thailand) across different continents (Americas, Europe, Middle East & Africa, and Asia). Our dataset includes periods of severe contemporary crises, such as the Global Financial Crisis, the COVID-19 pandemic and the Ukrainian War. We identify the emerging market countries, following the MSCI annual market classification review 2022 for emerging markets.<sup>6</sup> Some of the countries from the MSCI list are not included in this study due to having fixed exchange rates (e.g., Qatar, UAE) or due to data availability (e.g., Egypt, South Korea, 205 Taiwan).

We measure a country's sovereign risk in terms of the spread on its sovereign CDS. Sovereign CDS contracts perform as insurance contracts, allowing investors to buy protection against the negative event of a sovereign default or restructuring, in exchange of a premium, the CDS spread, paid over the contract's tenor in case of no default. In the case of default, the buyer could sell the defaulted debt to the protection seller at its par value<sup>7</sup>. We use the USD 210 denominated contracts with a tenor of 5 years, as they represent the most liquid segment of the sovereign CDS market.

The starting dates of the daily samples differ for the different countries due to data availability in a range between

<sup>5</sup>We use the R package 'lg', see [Otnheim \(2021\)](#) for details.

<sup>6</sup>[msci.com/our-solutions/indexes/market-classification](https://www.msci.com/our-solutions/indexes/market-classification)

<sup>7</sup>For a detailed analysis of CDS contract provisions, see [Pan and Singleton \(2008\)](#).

2007 and 2010.<sup>8</sup> CDS spreads are available from CMA (Credit Market Analysis Ltd.) via Bloomberg for the following fixings: Tokyo 8:30, London 16:30 and New York 21:30 (in UK time). To ensure the same daily information set for CDS spreads and exchange rates, care needs to be taken to select an appropriate fixing for the selection of countries. Some of the Asian currencies are traded only several hours per day (e.g., Malaysia 01:00-11:00 or Philippines 02:00-09:00). For the Asian countries we are using the Tokyo fixing, which corresponds to currency cross rate fixing F033 in Bloomberg. For all other countries we use the London fixing, and the currency fixing F113. We remove the days for a country, where at least one index, CDS spread or exchange rate, did not move at all. 215

To capture the relevance between global and local factors, we condition on global CDS spreads, which are computed out of 37 country values, the 16 emerging market countries plus 21 developed economy countries (United States, Austria, Belgium, Denmark, Finland, France, Germany, Ireland, Israel, Italy, Netherlands, Norway, Portugal, Spain, Sweden, Switzerland, United Kingdom, Australia, Hong Kong, Japan, New Zealand). We generate global CDS spreads for the London fixing and for the Tokyo fixing. For each of the emerging markets, we compute country specific global CDS spreads, where we exclude the own country values in the mean, hence the global averages are computed out of 36 country values. 220

We construct an US effective exchange rate by using currency trading volume for the weights. We retrieve the information on trading volume from BIS “[Triennial Central Bank Survey - OTC foreign exchange turnover in April 2022](#)”, see Table 5: “OTC foreign exchange turnover by currency pair”. The weights are time-varying, changing every three years from 2010 to 2022. For the years before 2010, we use the 2010 weights. We construct US effective exchange rate returns by computing a weighted return out of 21 country<sup>9</sup> returns,  $rfx_t^e = \frac{1}{n} \sum_{i=1}^n w_{it} rfx_{it}$ , for  $i = 1, \dots, n$ . For each of our emerging markets, we compute country-specific “rest-of-the-world” US effective rates by excluding the own country data from the weighted average. For the Asian countries, we compute country-specific US effective rates by using the Tokyo fixing, for all other countries we use the London fixing. 225

We also construct an unweighted US Dollar average exchange rate, where we include additionally to the 21 currencies, the 9 emerging country currencies of our study which are not included in the earlier weighted average selection. This total number of 30 currencies we decompose in a group of developed countries (11) and emerging countries (19). 230

## 5. Results and discussion

We now present the results for all countries in our sample, illustrating the plots of local Gaussian correlations, as well as disentangling global factors in CDS spreads and exchange rates. We also consider possible asymmetries in tail dependence, as well as nonlinear Granger causality tests. 240

---

<sup>8</sup>The data for India starts at 2013.

<sup>9</sup>Using the selection of most strongly traded currencies versus the US Dollar according to BIS: rEU, rJP, rGB, rCN, rCA, rAU, rCH, rHK, rSG, rKR, rIN, rMX, rNZ, rSE, rTW, rNO, rZA, rBR, rPL, rTR, rAE.

Table 1: Descriptive statistics

	Code	Start	Obs	Mean CDS	Std $\Delta$ CDS	Min $\Delta$ CDS	Max $\Delta$ CDS	Sk $\Delta$ CDS	Ku $\Delta$ CDS	Std rFX	Min rFX	Max rFX	Sk rFX	Ku rFX	Cor
Brazil	BR	2007-07-10	3985	197.18	10.15	-127.90	162.90	1.43	49.30	1.03	-7.80	6.45	-0.21	7.97	-0.54
Chile	CL	2007-03-01	3961	82.58	4.54	-42.40	61.50	1.37	37.67	0.75	-4.67	5.75	-0.19	7.12	-0.31
Colombia	CO	2007-11-14	3932	159.00	9.23	-135.70	174.00	1.24	70.63	0.83	-5.84	5.74	-0.18	6.81	-0.43
Mexico	MX	2007-03-01	4164	129.29	8.50	-134.20	167.00	2.55	92.31	0.78	-7.26	4.85	-0.74	10.82	-0.51
Peru	PE	2007-04-17	3889	118.68	6.83	-71.90	182.80	5.25	155.82	0.39	-3.20	2.76	0.22	12.78	-0.25
Czech Republic	CZ	2009-04-23	3345	59.79	2.69	-31.46	33.83	0.63	32.95	0.69	-5.47	3.42	-0.20	6.07	-0.21
Hungary	HU	2008-06-09	3650	208.21	9.39	-138.50	159.10	0.74	62.94	0.96	-6.36	5.63	-0.04	6.43	-0.40
Poland	PL	2008-08-05	3636	102.69	5.17	-58.80	63.00	0.34	34.24	0.91	-6.05	6.91	-0.08	8.10	-0.41
South Africa	ZA	2007-03-01	4161	203.08	9.38	-104.20	190.40	2.57	72.79	1.04	-10.60	6.65	-0.42	7.76	-0.48
Turkey	TR	2008-08-01	3805	306.60	12.53	-98.80	146.10	1.50	27.20	1.15	-15.84	35.70	6.68	269.48	-0.47
China	CN	2010-02-01	3257	76.21	3.09	-21.69	28.99	0.65	13.67	0.22	-1.81	1.88	0.16	14.43	-0.21
India	IN	2013-10-21	2367	118.94	4.17	-56.37	56.51	0.70	62.72	0.32	-1.43	1.36	-0.15	4.93	-0.05
Indonesia	ID	2010-02-01	3263	142.15	5.84	-45.96	57.58	0.67	16.48	0.50	-8.42	4.65	-0.93	40.11	-0.36
Malaysia	MY	2010-02-01	3284	93.02	4.07	-33.46	36.08	0.32	16.08	0.41	-2.34	2.85	0.29	7.73	-0.48
Philippines	PH	2010-02-01	3363	98.49	4.09	-42.41	35.31	0.20	18.76	0.31	-1.37	1.58	-0.19	4.58	-0.34
Thailand	TH	2010-02-01	3354	84.29	3.26	-28.89	28.66	0.25	14.98	0.34	-1.56	2.44	0.22	6.26	-0.29

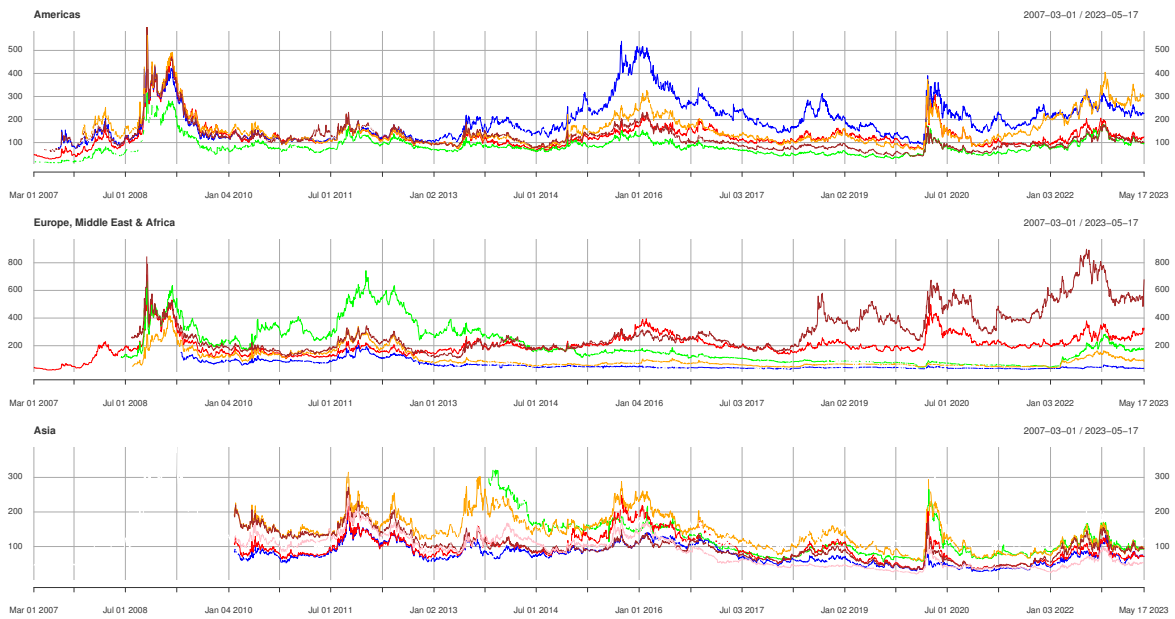


Figure 1: CDS spreads  
 Americas: Brazil (blue), Chile (green), Colombia (orange), Mexico (red), Peru (brown)  
 Europe, Middle East & Africa: Czech Republic (blue), Hungary (green), Poland (orange), South Africa (red), Turkey (brown)  
 Asia: China (blue), India (green), Indonesia (orange), Malaysia (red), Philippines (brown), Thailand (pink)

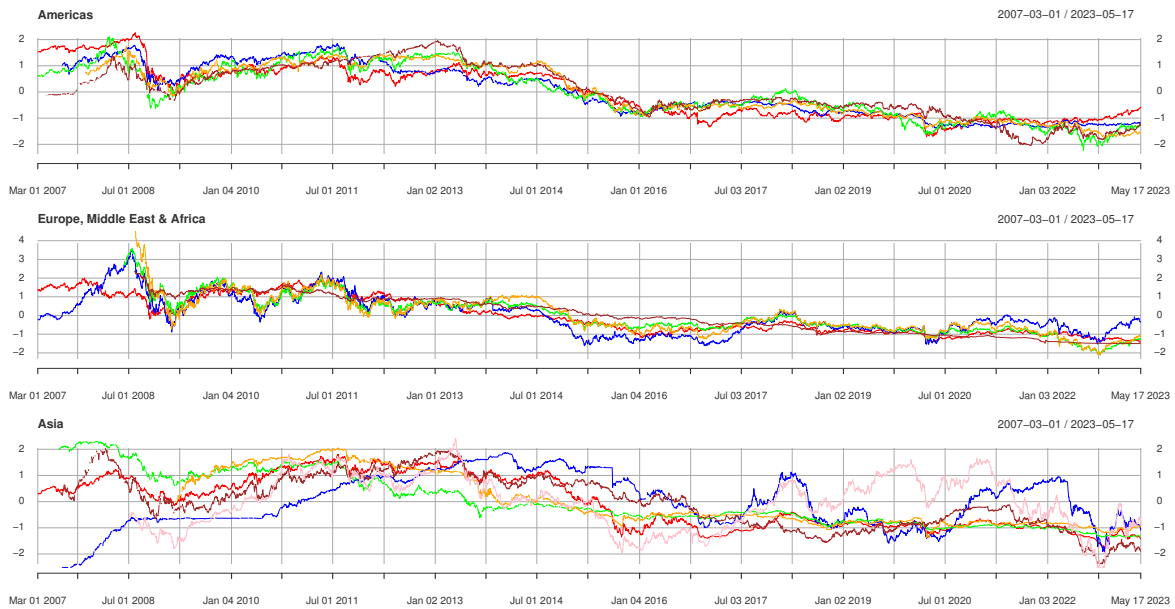


Figure 2: Exchange rates versus the US Dollar (standardized)  
 Americas: Brazil (blue), Chile (green), Colombia (orange), Mexico (red), Peru (brown)  
 Europe, Middle East & Africa: Czech Republic (blue), Hungary (green), Poland (orange), South Africa (red), Turkey (brown)  
 Asia: China (blue), India (green), Indonesia (orange), Malaysia (red), Philippines (brown), Thailand (pink)

## 5.1. Contemporaneous dependence

Our sample of daily data across 16 emerging economies allows us to evaluate the CDS/foreign exchange links also during periods of extreme turbulence associated with the Global Financial Crisis, the COVID-19 pandemic as well as the Ukrainian War, which have created remarkable uncertainty in global financial markets and consequently enhanced the rewards for investors to take up risk. Such periods of stress have been typically associated with increases in sovereign risk (see, e.g., Lane, 2012, on the link between the GFC and the sovereign debt crisis; Augustin et al., 2022, on COVID-19 and sovereign risk; and Sulong et al., 2023, on the negative impact of the Russian invasion of Ukraine on sovereign debt markets), which is apparent in Figure 1, showing the corresponding peaks in CDS spreads.

We note that there is a remarkable cross-sectional difference in CDS in the different countries considered, with values ranging from the relatively lower risk of China and the Czech Republic, exhibiting an average spread of 76 and 60 points respectively, to the higher risk attributed by financial markets to countries such as Turkey (307) and Colombia (159). This will allow us to have a good oversight of the relationship between exchange rates and CDS for a wide range of market-perceived risk values.

Figure 2 reports the plots of the exchange rates of the local currencies against the USD. We note remarkable depreciations of local currencies during the Global Financial Crisis, driven by the associated increase of risk aversion across the globe (also underscored by the corresponding peaks in the CDS spreads), that has enhanced the demand for USD given its safe haven status. Regarding the Chinese Yuan, the data show its appreciation during the Ukrainian war, where it has replaced the USD as most traded currency in Russia, due to the sanctions imposed by the US, EU and other advanced economies. The active intervention on the foreign exchange by the People's Bank of China is also apparent, in particular during the GFC, to boost foreign demand of Chinese exports by halting appreciations of the Yuan<sup>10</sup>.

Considering the Pearson's correlation coefficients between CDS spreads and exchange rates, reported in Table 1, we note that these are generally negative for all countries in our sample, ranging from a low correlation of -0.05 of India to a high negative correlation of -0.54 for Brazil. These global data, nevertheless, does not discern across the different parts of the assets distribution, which are of interest for our research.

Figure 3 reports our estimated local correlations. We note that correlations are generally negative for all countries in our sample and for most segments of the distributions. This means that increases in sovereign risk are generally associated with currency depreciations, a finding consistent with the financial, risk premium and political economy channels. Our results, overall, corroborate the findings of Bernoth and Herwartz (2021) for emerging market economies as well as Della Corte et al. (2022) and Longstaff et al. (2011), as our empirical methodology shows that the identified negative correlations apply to most segments of the assets distribution. Correlations are usually higher in absolute value in the tails of the distributions, when changes in CDS spreads and in exchange rates are large.

Instead of focussing on the full two-dimensional plain, we focus in the following on the negative diagonal of the

---

<sup>10</sup>For further details and an historical analysis on China's managed float, see Das (2019).

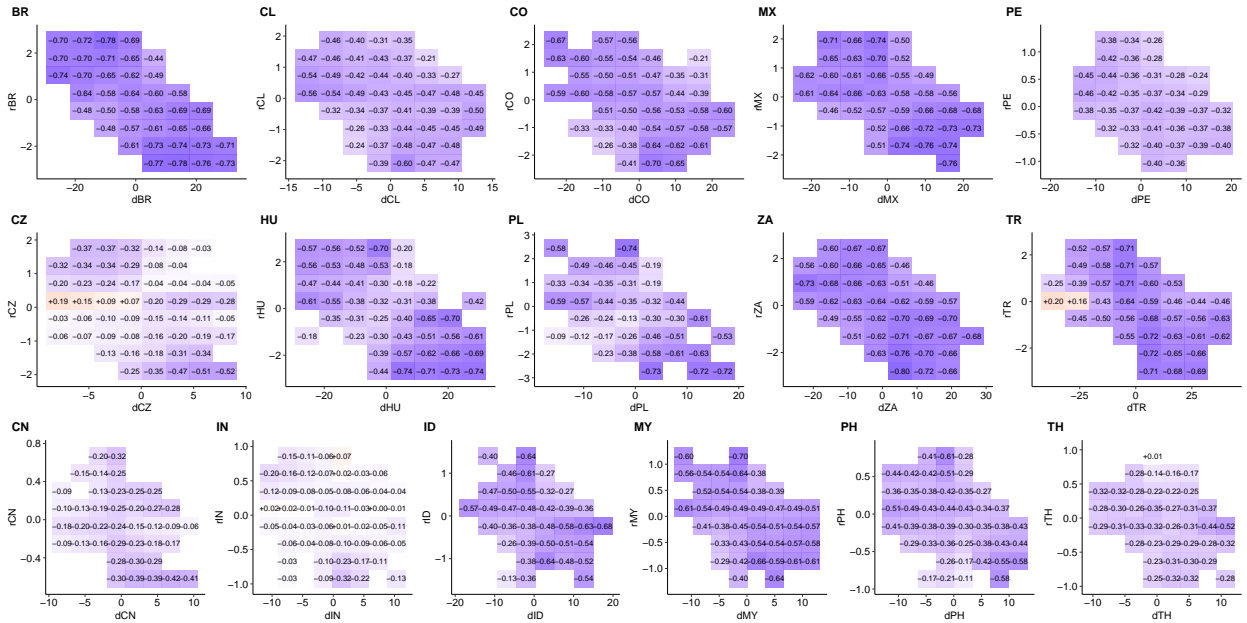


Figure 3: Local Gaussian correlation between changes in CDS spreads and exchange rate returns. Americas (top row) - Europe, Middle East & Africa (middle row) - Asia (bottom row). Please see country codes in Table 1. The local Gaussian correlations are computed on a grid between 1<sup>st</sup> and 99<sup>th</sup> percentile. Values are displayed for areas where data densities are above a threshold level.

bi-variate distributions. In Figure 4, one can see the baseline model (i.e. the local Gaussian correlation between CDS and exchange rates on the diagonal) in blue lines. We can see that correlations are negative, and higher in general in the tails. In the case of the Czech Republic and India, we note a positive correlation associated with the centre of the CDS distribution. In such limited cases, increases in sovereign risk are accompanied by appreciations of the local currency, a finding consistent with the trade channel, but only for average changes of sovereign risk; whilst for the tails of the distribution the negative correlation prevails, in line with the rest of the countries in our sample.

## 5.2. Asymmetry in tail dependence

We now turn our attention to whether the correlations between CDS and foreign exchange rates are similar for increases vs decreases in risk, by testing for asymmetry in tail dependence.

Our empirical methodology is well placed to study tail dependence: as it uses all observations when computing correlations, rather than focussing only on observations in the tails, it does not suffer from conditioning bias when computing correlations (see Longin and Solnik, 2001) and, therefore, provides reliable results.

Our empirical results show that the null hypothesis of equal tail dependence can only be rejected for a few countries, in particular for Turkey, China and the Philippines. As Turkey experienced significant depreciations and increases in sovereign risk during our sample, with the highest levels of CDS spreads in our cross-section, some loss in confidence by investors might have contributed to the higher dependence in the high risk tail. For China, although correlations across the distribution are relatively low, the right tail, corresponding to the highest values of sovereign



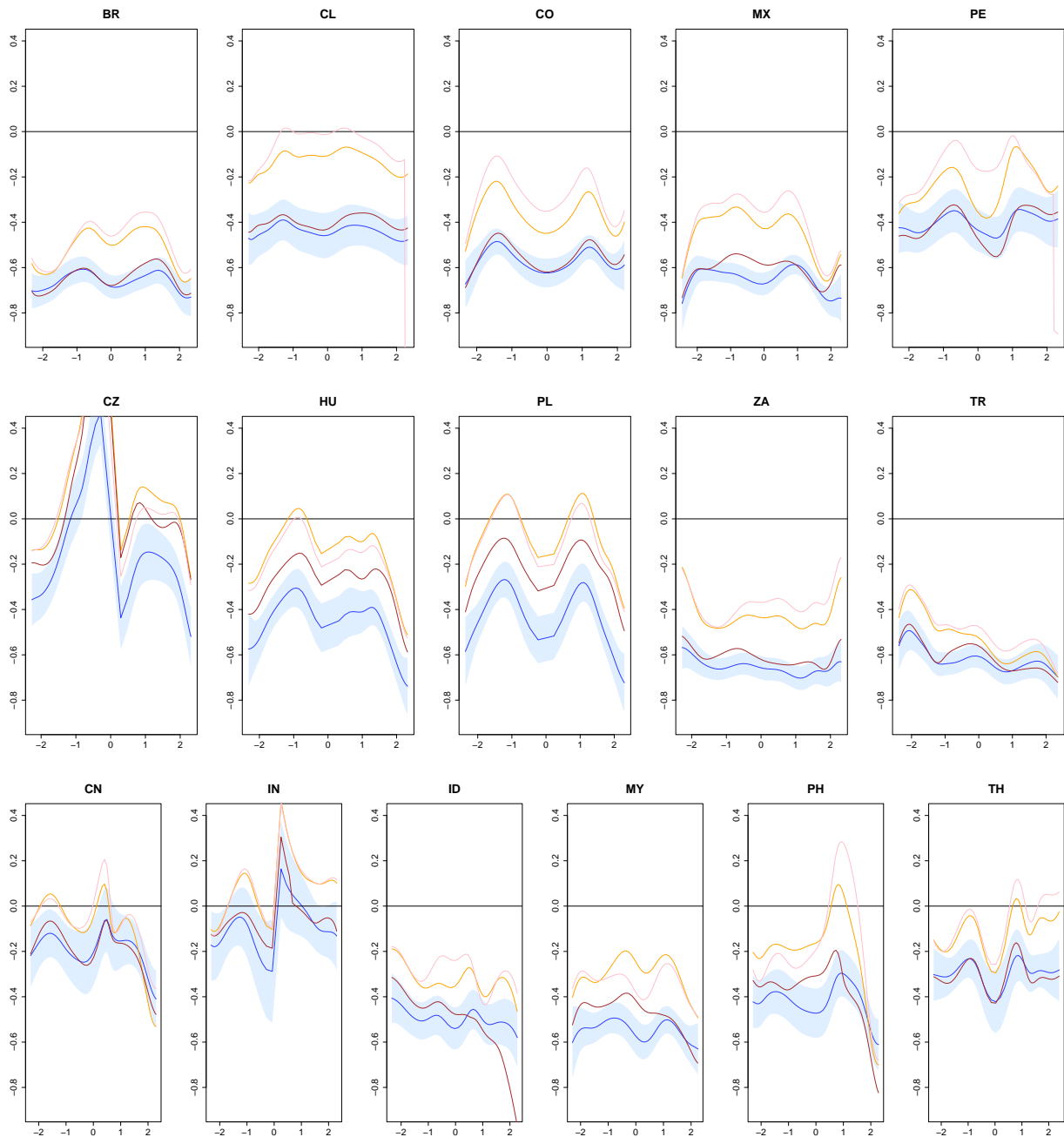


Figure 4: Americas (top row) - Europe, Middle East & Africa (middle row) - Asia (bottom row). Please see country codes in Table 1.

Blue line: Local Gaussian correlation between  $\Delta\text{CDS}$  and  $\text{rfx}$  on the negative diagonal with 95% confidence bands (horizontal axis shows  $\Delta\text{CDS}$  in standard deviations).

Orange line: Local Gaussian partial correlation, conditioning on average global CDS changes equal to zero, hence measuring correlation of country specific sovereign risk with exchange rates.

Brown line: Local Gaussian partial correlation, conditioning on average developed countries CDS changes equal to zero.

Pink line: Local Gaussian partial correlation, conditioning on average emerging countries CDS changes equal to zero.

risk, shows higher values of the (negative) correlations with exchange rates. Such result resonates with the findings of Li et al. (2020) who explain that, given the Yuan's managed float, only larger depreciations are linked with rises in risk. Such result is due to the fact that sharp depreciations of the domestic currency damage firms with non-hedged foreign-denominated liabilities, whilst mild appreciations in turn might increase investors' confidence.

295

There is no indication of asymmetry in tail dependence for the countries of the Americas, showing consistently low test statistics.

Table 2: Asymmetry in tail dependence test results

		$t^5$	p value	$t^{10}$	p value	$t^{33}$	p value
Brazil	BR	0.507	[0.612]	0.522	[0.602]	0.350	[0.726]
Chile	CL	0.077	[0.938]	0.100	[0.92]	0.250	[0.802]
Colombia	CO	-0.950	[0.342]	-0.769	[0.442]	0.316	[0.752]
Mexico	MX	-0.106	[0.916]	0.189	[0.85]	1.756*	[0.079]
Peru	PE	-0.431	[0.666]	-0.417	[0.677]	-0.737	[0.461]
Czech Republic	CZ	1.686*	[0.092]	1.417	[0.156]	0.222	[0.825]
Hungary	HU	1.647*	[0.099]	1.740*	[0.082]	1.874*	[0.061]
Poland	PL	1.463	[0.144]	1.596	[0.11]	2.205**	[0.027]
South Africa	ZA	0.952	[0.341]	0.970	[0.332]	0.802	[0.422]
Turkey	TR	2.077**	[0.038]	2.280**	[0.023]	1.978**	[0.048]
China	CN	2.076**	[0.038]	2.129**	[0.033]	1.568	[0.117]
India	IN	-0.465	[0.642]	-0.543	[0.587]	-0.292	[0.771]
Indonesia	ID	1.906*	[0.057]	1.759*	[0.079]	1.010	[0.313]
Malaysia	MY	0.391	[0.696]	0.540	[0.589]	0.577	[0.564]
Philippines	PH	2.276**	[0.023]	2.205**	[0.027]	1.276	[0.202]
Thailand	TH	-0.213	[0.831]	-0.206	[0.837]	-0.158	[0.875]

Notes: The test statistics,  $t^5$ ,  $t^{10}$  and  $t^{33}$ , are average t-values covering a selected percentile of the tails, see equation (2). \* significant at 10% level, \*\* significant at 5% level, \*\*\* significant at 1% level.

### 5.3. Global versus country specific sovereign risk and exchange rates

Having estimated the baseline model in terms of local Gaussian correlations, we proceed to estimate the local Gaussian *partial* correlations, considering the impact of global CDS movements (calculated from the average of developed and

300

emerging countries). This methodology allows us to get a better insight into the country-specific factors affecting the relationship between CDS and exchange rates, having disentangled the global factors.

In a first experiment, we study the sovereign risk/exchange rate relationship while conditioning on the information that globally, sovereign risk is not changing ( $\Delta CDS^s = 0$ ). In a further step, we split up our global variable in two components, emerging countries and developed countries.

Considering the global CDS movements and the American countries (Figure 4), the shape of the correlations are similar across the different methodologies. Interestingly, disentangling the global factors, correlations are now generally lower and the state of sovereign risk in other emerging markets seems to be the main driver, whilst the average CDS of developed economies does not seem to have a remarkable impact. This is apparent by considering the closeness between the blue and the brown lines in Figure 4. Correlations in the tails of the distributions generally exhibit higher absolute values: extremely high or low values of changes in CDS are linked with higher depreciations than when this occurs for lower changes. Plausible explanations for such observations are that emerging markets have become an increasingly important asset class for international investors as a portfolio diversification strategy due to their potential economic and financial growth rates; emerging sovereigns are among the largest high yield borrowers in the world; emerging markets have a heightened exposure to global and regional shocks, making them more unstable relative to advanced economies; and emerging markets appear to be connected under crisis even if their economic fundamentals appear to be weakly correlated (see Ballester et al., 2019, and references therein).

Considering the global CDS movements and the European, African and Middle Eastern countries (Figure 4), correlations are also generally negative and the shape of the correlations is, once again, generally similar across the different methodologies. Disentangling the global factors has the effect of reducing the size of correlations across all segments of the CDS distribution. Unlike the previous case, we note a high positive correlation for the Czech Republic (consistent across all methodologies) in correspondence of minus one standard deviation. The risk in developed countries seem to matter more for Czech Republic, Hungary and Poland, compared to all countries considered so far, whilst the emerging market risk confirms its remarkable importance in driving the correlations analysed. The findings for the Czech Republic, Hungary and Poland might be associated with their appurtenance to the European Union, making them more vulnerable to advanced economies shocks<sup>11</sup>.

Considering the global CDS movements and the Asian economies (Figure 4), correlations are also generally negative and lower compared to the other countries analysed, and the shape of the correlations is, once again, generally similar across the different methodologies. India exhibits positive correlations especially in the higher part of the distribution. Disentangling the global factors has once again the effect of reducing the size of correlations across all segments of the CDS distribution.

---

<sup>11</sup>The Czech Republic, in particular, is undergoing assessment to join the ERM-II as a pre-requisite for eurozone appurtenance.

## 5.4. US Dollar movements versus country specific depreciations and sovereign risk

We are now disentangling local vs global movements in the exchange rates against the USD, by holding the trading-volume-weighted USD exchange rate returns constant and estimating the partial correlations between country-specific depreciations and sovereign risks (red lines, Figure 5). While these results demonstrate a more weakened inverse relationship between country-specific information captured in exchange rate returns and sovereign risk relative to the baseline unconditional relationship estimations (blue lines, Figure 5), it is still relatively strong for most countries in our sample - the five Latin American countries, Hungary, South Africa, Turkey, Indonesia, Malaysia, Philippines - over the joint asset returns distribution. In the case of holding unweighted average US dollar exchange rate returns constant (orange lines, Figure 5), we observe that the partial correlation between the country-specific exchange rate returns and CDS returns considerably weaken across all countries in our sample. The difference in the results obtained when setting the trading-volume-weighted and unweighted USD exchange rates equal to zero are driven by the high weight of developed countries in the trading-volume-weighted USD exchange rate, as it is strongly determined by the Euro, the Japanese Yen, Pound Sterling and other developed country currencies, while in the simple unweighted USD exchange rate, emerging currencies have a significant weight.

When we hold USD exchange rate returns for developed countries (brown lines, Figure 5) versus emerging countries (pink lines, Figure 5) constant, by and large we document relatively stronger partial correlations between foreign exchange rate depreciations and sovereign risk across countries by setting developed countries USD exchange rate returns equal to zero. This highlights the important contribution emerging market currencies make in the relationship between currency depreciations and sovereign risk. A possible reason for the significant role played by emerging market currencies in the relationship between exchange rates and sovereign risk in such markets is that their currencies have captured the attention of international investors, since they provide substantial equity-like excess returns against major currencies, but with low volatility, and they have a relatively high forward premium that considerably raises portfolio returns (Gilmore and Hayashi, 2011). In general, we once again note that the partial correlations conditioned on different exchange rate information primarily affects the magnitude of the relationships between the exchange rate and CDS returns rather than the shape of the relationship over the joint asset returns distribution.

## 5.5. Nonlinear Granger causality tests

In the following, we discuss the results of nonlinear causality tests, whereby hypothesis  $H_0^1$  focusses on causation from exchange rates to CDS spreads and hypothesis  $H_0^2$  studies the opposite direction of causality. If both hypothesis can be rejected, bi-directional causality is present:

$$H_0^1 : \Delta CDS_t \perp rfx_{t-1} \mid \Delta CDS_{t-1}$$

$$H_0^2 : rfx_t \perp \Delta CDS_{t-1} \mid rfx_{t-1}$$

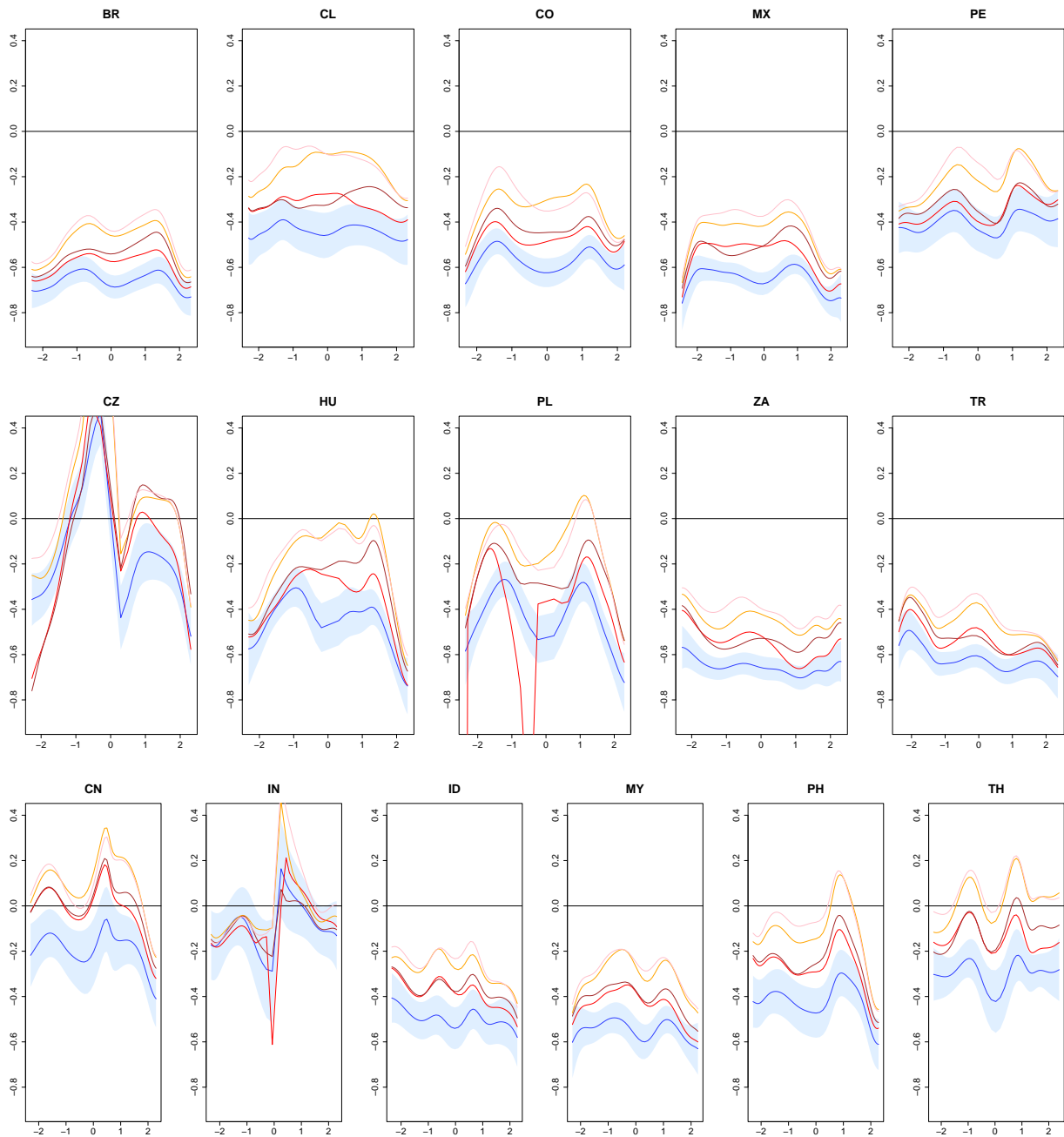


Figure 5: Americas (top row) - Europe, Middle East & Africa (middle row) - Asia (bottom row). Please see country codes in Table 1.

Blue line: Local Gaussian correlation between  $\Delta CDS$  and  $r_{fx}$  on the negative diagonal with 95% confidence bands (horizontal axis shows  $\Delta CDS$  in standard deviations).

Red line: Local Gaussian partial correlation, conditioning on effective US Dollar exchange rate returns equal to zero (trading volume weights).

Brown line: Local Gaussian partial correlation, conditioning on unweighted average effective US Dollar exchange rate returns for developed country currencies equal to zero.

Orange line: Local Gaussian partial correlation, conditioning on unweighted average effective US Dollar exchange rate returns equal to zero.

Pink line: Local Gaussian partial correlation, conditioning on unweighted average effective US Dollar exchange rate returns for emerging country currencies equal to zero.

Causality tests tend to show a bi-directional causality across most of the countries in our sample, see Table 3. This sheds some further light on the relationship between sovereign risk and exchange rates, emphasising the importance of the different channels linking sovereign risk to exchange rates, as outlined in the literature. The only exceptions to bi-directional causality are represented by Brazil, Turkey and China (showing a unilateral causality from CDS spreads to exchange rates only) and India and Indonesia, exhibiting a unilateral causality from exchange rates to CDS spreads. The results are of particular importance for policy-makers, as the presence/absence of feedback between exchange rates and sovereign risk will be relevant for the adequate planning economic policies, particularly as the simultaneous occurrence of currency and sovereign debt crises is a common phenomenon (Dreher et al., 2006). In particular, fiscal consolidation policies aimed at reducing sovereign risk, in the presence of feedback from CDS to exchange rates, will result in the appreciation of the local currency, with relevant consequences on the economies.

Table 3: Granger causality test results

		$H_0^1$	p value	$H_0^2$	p value
Brazil	BR	0.0246	[0.210]	0.0394***	[0.000]
Chile	CL	0.0443***	[0.000]	0.0163**	[0.022]
Colombia	CO	0.0260**	[0.034]	0.0652***	[0.000]
Mexico	MX	0.0553***	[0.002]	0.0395***	[0.000]
Peru	PE	0.0226***	[0.008]	0.0195**	[0.012]
Czech Republic	CZ	0.0573***	[0.000]	0.0376***	[0.000]
Hungary	HU	0.0613***	[0.000]	0.0665***	[0.000]
Poland	PL	0.0566***	[0.000]	0.0498***	[0.000]
South Africa	ZA	0.0255**	[0.016]	0.0122**	[0.044]
Turkey	TR	0.0187	[0.112]	0.0474***	[0.000]
China	CN	0.0055	[0.452]	0.0096*	[0.074]
India	IN	0.0275***	[0.000]	0.0097	[0.102]
Indonesia	ID	0.0224*	[0.072]	0.0134	[0.140]
Malaysia	MY	0.0512***	[0.000]	0.0434***	[0.000]
Philippines	PH	0.0369***	[0.006]	0.0307***	[0.002]
Thailand	TH	0.0569***	[0.000]	0.0105*	[0.084]

Notes:  $H_0^1$  :  $\Delta CDS_t \perp rfx_{t-1} \mid \Delta CDS_{t-1}$ : no Granger causality from exchange rates to CDS spreads,  $H_0^2$  :  $rfx_t \perp \Delta CDS_{t-1} \mid rfx_{t-1}$ : no Granger causality from CDS spreads to exchange rates. 500 bootstrap repetitions.

\* significant at 10% level, \*\* significant at 5% level, \*\*\* significant at 1% level.

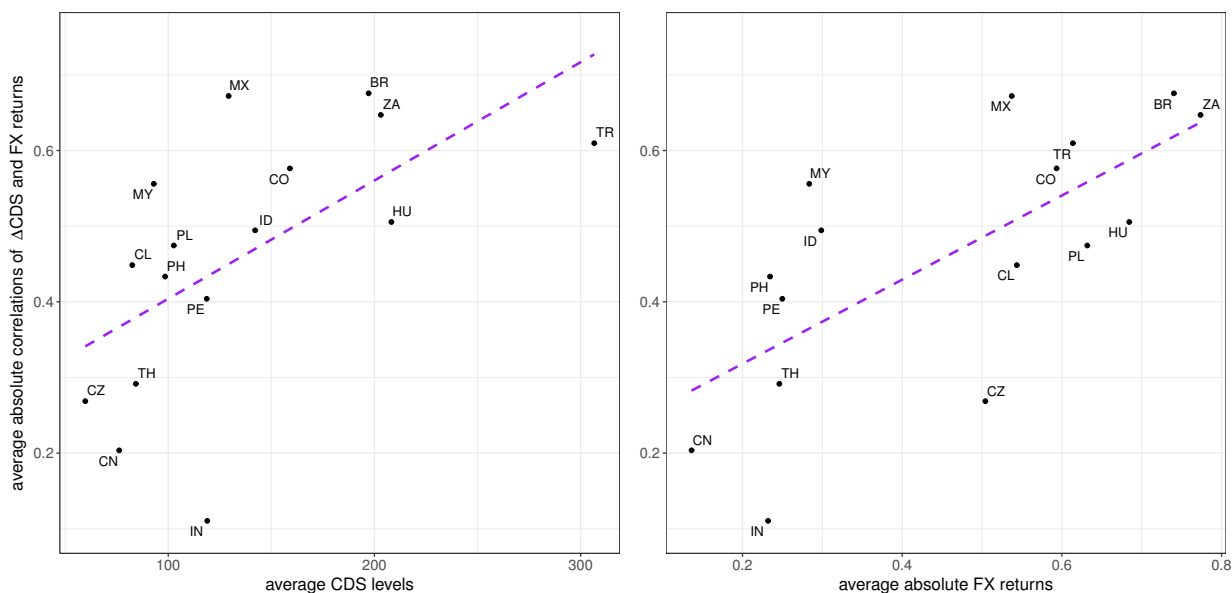


Figure 6: Cross-sectional view: dependence between CDS spread changes and FX returns versus CDS spread levels (left panel) and versus FX variation (right panel). Please see country codes in Table 1.

## 5.6. Sovereign risk and exchange rates - a cross-sectional perspective

375 In our cross-section of emerging economies, the dependence between our main variables varies significantly between countries. In the following, we try to dissect why some countries might have a stronger relationship between sovereign risk and exchange rates than other countries. The measure of dependence we are using is average absolute correlation between CDS changes and fx returns on the negative diagonal of the bi-variate plain (baseline model in chapter 5.1). To explain the cross-sectional variation, we use two variables which we directly infer from our data,<sup>12</sup> average  
 380 sovereign risk over the sample period and average variation of exchange rates. In the left panel of Figure 6, we document that countries with higher sovereign risk have a stronger dependence between risk and fx rates, for example Turkey, Hungary, South Africa and Brazil. This sits well with the empirically verified proposition of Coudert and Mignon (2013) for emerging markets that the currency of a country with a high default risk should depreciate more severely during stress. Further, countries with higher exchange rate variation tend to have higher dependence between  
 385 risk and fx rates, see Figure 6 right panel.<sup>13</sup>

<sup>12</sup>Using country fundamentals is beyond the scope of this paper.

<sup>13</sup>Simple OLS regressions show a slope coefficient  $t$  value of 2.79 and a  $R^2$  of 0.36 for the left panel and a  $t$  value of 3.58 and a  $R^2$  of 0.48 for the right panel.

## 6. Conclusions

We have examined the interlinkages between sovereign risk, measured in terms of CDS spreads, and exchange rate returns for a sample of emerging economies, considering daily data for a period that encompasses major crises, such as the Global Financial Crisis, the COVID-19 pandemic and the Ukrainian war, all events that put under particular stress public finances worldwide and affected with particular strength the emerging economies. Using the most recent developments in the local Gaussian partial correlation methodology, we have been able to uncover different channels through which the link between sovereign risk and exchange rates operates, even at the high frequency of our datasets. Whilst global correlations are all negative, by considering the different segments of the assets distribution we note significant changes in the correlations between the two variables, with significant episodes of positive correlations across some countries restricted to specific segments.

We have also shown that the information contained in CDS spreads and USD movements relative to developed economies matters much less than the one arising from other emerging markets for our correlations, and that non-linear causality linkages generally show a bi-directional causality.

Taken all together, our results are of particular relevance for the design of adequate economic policies, particularly regarding fiscal consolidation measures, given our documented link between sovereign risk and exchange rates.

### Disclaimer

We declare that this research did not receive any specific grant from funding agencies in the public, commercial, or not-for-profit sectors.

## References

- Ang, A., Chen, J., 2002. Asymmetric correlations of equity portfolios. *Journal of Financial Economics* 63, 443–494.
- Augustin, P., Chernov, M., Song, D., 2020. Sovereign credit risk and exchange rates: Evidence from CDS quanto spreads. *Journal of Financial Economics* 137, 129–151.
- Augustin, P., Sokolovski, V., Subrahmanyam, M.G., Tomio, D., 2022. In sickness and in debt: The COVID-19 impact on sovereign credit risk. *Journal of Financial Economics* 143, 1251–1274.
- Augustin, P., Subrahmanyam, M.G., Tang, D.Y., Wang, S.Q., 2016. Credit default swaps. *Annual Review of Financial Economics* 8, 175–196.
- Ballester, L., Díaz-Mendoza, A.C., González-Urteaga, A., 2019. A systematic review of sovereign connectedness on emerging economies. *International Review of Financial Analysis* 62, 157–163.
- Beirne, J., Fratzscher, M., 2013. The pricing of sovereign risk and contagion during the European sovereign debt crisis. *Journal of International Money and Finance* 34, 60–82.
- Bernoth, K., Herwartz, H., 2021. Exchange rates, foreign currency exposure and sovereign risk. *Journal of International Money and Finance* 117, 102454.
- Blanco, R., Brennan, S., Marsh, I.W., 2005. An empirical analysis of the dynamic relation between investment-grade bonds and credit default swaps. *The Journal of Finance* 60, 2255–2281.
- Borensztein, E., Panizza, U., 2009. The costs of sovereign default. *IMF Staff Papers* 56, 683–741.



- 420 Coudert, V., Mignon, V., 2013. The “forward premium puzzle” and the sovereign default risk. *Journal of International Money and Finance* 32, 491–511.
- Cowan, K., Levy-Yeyati, E.L., Panizza, U., Sturzenegger, F., 2006. Sovereign debt in the Americas: new data and stylized facts. IDB Working Paper .
- Das, M.S., 2019. China’s evolving exchange rate regime. International Monetary Fund.
- 425 Della Corte, P., Sarno, L., Schmeling, M., Wagner, C., 2022. Exchange rates and sovereign risk. *Management Science* 68, 5591–5617.
- Dreher, A., Herz, B., Karb, V., 2006. Is there a causal link between currency and debt crises? *International Journal of Finance & Economics* 11, 305–325.
- Duffie, D., 1999. Credit swap valuation. *Financial Analysts Journal* 55, 73–87.
- Eaton, J., Taylor, L., 1986. Developing country finance and debt. *Journal of Development Economics* 22, 209–265.
- 430 Eichengreen, B., Hausmann, R., 2019. Other people’s money: Debt denomination and financial instability in emerging market economies. University of Chicago Press.
- Fang, C., Schumacher, J., Trebesch, C., 2021. Restructuring sovereign bonds: Holdouts, haircuts and the effectiveness of CACs. *IMF Economic Review* 69, 155–196.
- Feng, Q., Sun, X., Liu, C., Li, J., 2021. Spillovers between sovereign CDS and exchange rate markets: The role of market fear. *The North American Journal of Economics and Finance* 55, 101308.
- 435 Fornari, F., Zaghini, A., 2022. It’s not time to make a change: Sovereign fragility and the corporate credit risk. *Journal of International Money and Finance* 128, 102703.
- Gilmore, S., Hayashi, F., 2011. Emerging market currency excess returns. *American Economic Journal: Macroeconomics* 3, 85–111.
- Gros, D., 2013. Foreign debt versus domestic debt in the Euro area. *Oxford Review of Economic Policy* 29, 502–517.
- 440 Hausmann, R., Panizza, U., 2003. On the determinants of original sin: an empirical investigation. *Journal of International Money and Finance* 22, 957–990.
- IMF, 2021. Global Financial Stability Report.
- IMF, 2022. Global Financial Stability Report.
- Jorion, P., Zhang, G., 2007. Good and bad credit contagion: Evidence from credit default swaps. *Journal of Financial Economics* 84, 860–883.
- 445 Kearns, J., Patel, N., 2016. Does the financial channel of exchange rates offset the trade channel? *BIS Quarterly Review* December .
- Lane, P.R., 2012. The European sovereign debt crisis. *Journal of Economic Perspectives* 26, 49–68.
- Li, J., Lan, L., Ouyang, Z., 2020. Credit constraints, currency depreciation and international trade. *Journal of International Money and Finance* 104, 102175.
- Liu, C., Sun, X., Li, J., 2023. Time-frequency comovements between sovereign CDS and exchange rates: The role of sentiments. *Global Finance Journal* 56, 100775.
- 450 Longin, F., Solnik, B., 2001. Extreme correlation of international equity markets. *The Journal of Finance* 56, 649–676.
- Longstaff, F.A., Mithal, S., Neis, E., 2005. Corporate yield spreads: Default risk or liquidity? New evidence from the credit default swap market. *The Journal of Finance* 60, 2213–2253.
- Longstaff, F.A., Pan, J., Pedersen, L.H., Singleton, K.J., 2011. How sovereign is sovereign credit risk? *American Economic Journal: Macroeconomics* 3, 75–103.
- 455 Lustig, H., Roussanov, N., Verdelhan, A., 2011. Common risk factors in currency markets. *The Review of Financial Studies* 24, 3731–3777.
- Manasse, P., Roubini, N., 2009. “rules of thumb” for sovereign debt crises. *Journal of International Economics* 78, 192–205.
- Mitchener, K.J., Trebesch, C., 2023. Sovereign debt in the twenty-first century. *Journal of Economic Literature* 61, 565–623.
- Ojeda-Joya, J.N., Sarmiento, G., 2018. Sovereign risk and the real exchange rate: A non-linear approach. *International Economics* 156, 1–14.
- 460 Otneim, H., 2021. lg: An R package for local Gaussian approximations. *The R Journal* 13/2, 38–56.
- Otneim, H., Tjøstheim, D., 2017. The locally Gaussian density estimator for multivariate data. *Statistics and Computing* 27, 1595–1616.
- Otneim, H., Tjøstheim, D., 2018. Conditional density estimation using the local Gaussian correlation. *Statistics and Computing* 28, 303–321.

- Otneim, H., Tjøstheim, D., 2022. The locally Gaussian partial correlation. *Journal of Business & Economic Statistics* 40, 924–936.
- Pan, J., Singleton, K.J., 2008. Default and recovery implicit in the term structure of sovereign CDS spreads. *The Journal of Finance* 63, 2345–2384.
- Reinhart, C.M., 2002. Default, currency crises, and sovereign credit ratings. *The World Bank Economic Review* 16, 151–170. 465
- Reinhart, C.M., Rogoff, K.S., 2009. The aftermath of financial crises. *American Economic Review* 99, 466–472.
- Reinhart, C.M., Rogoff, K.S., Savastano, M., 2003. Debt intolerance. NBER working paper 9908, 1–77.
- Stulz, R.M., 2010. Credit default swaps and the credit crisis. *Journal of Economic Perspectives* 24, 73–92.
- Sulong, Z., Abdullah, M., Abakah, E.J.A., Adeabah, D., Asongu, S., 2023. Russia-Ukraine war and G7 debt markets: Evidence from public sentiment towards economic sanctions during the conflict. *International Journal of Finance & Economics* . 470
- Tjøstheim, D., Hufthammer, K.O., 2013. Local Gaussian correlation: A new measure of dependence. *Journal of Econometrics* 172, 33–48.