

Chan, Joshua

**Article**

## Asymmetric conjugate priors for large Bayesian VARs

Quantitative Economics

**Provided in Cooperation with:**

The Econometric Society

*Suggested Citation:* Chan, Joshua (2022) : Asymmetric conjugate priors for large Bayesian VARs, Quantitative Economics, ISSN 1759-7331, The Econometric Society, New Haven, CT, Vol. 13, Iss. 3, pp. 1145-1169, <https://doi.org/10.3982/QE1381>

This Version is available at:

<https://hdl.handle.net/10419/296297>

**Standard-Nutzungsbedingungen:**

Die Dokumente auf EconStor dürfen zu eigenen wissenschaftlichen Zwecken und zum Privatgebrauch gespeichert und kopiert werden.

Sie dürfen die Dokumente nicht für öffentliche oder kommerzielle Zwecke vervielfältigen, öffentlich ausstellen, öffentlich zugänglich machen, vertreiben oder anderweitig nutzen.

Sofern die Verfasser die Dokumente unter Open-Content-Lizenzen (insbesondere CC-Lizenzen) zur Verfügung gestellt haben sollten, gelten abweichend von diesen Nutzungsbedingungen die in der dort genannten Lizenz gewährten Nutzungsrechte.

**Terms of use:**

*Documents in EconStor may be saved and copied for your personal and scholarly purposes.*

*You are not to copy documents for public or commercial purposes, to exhibit the documents publicly, to make them publicly available on the internet, or to distribute or otherwise use the documents in public.*

*If the documents have been made available under an Open Content Licence (especially Creative Commons Licences), you may exercise further usage rights as specified in the indicated licence.*



<https://creativecommons.org/licenses/by-nc/4.0/>

## Asymmetric conjugate priors for large Bayesian VARs

JOSHUA C. C. CHAN

Department of Economics, Purdue University

Large Bayesian VARs are now widely used in empirical macroeconomics. One popular shrinkage prior in this setting is the natural conjugate prior as it facilitates posterior simulation and leads to a range of useful analytical results. This is, however, at the expense of modeling flexibility, as it rules out cross-variable shrinkage, that is, shrinking coefficients on lags of other variables more aggressively than those on own lags. We develop a prior that has the best of both worlds: it can accommodate cross-variable shrinkage, while maintaining many useful analytical results, such as a closed-form expression of the marginal likelihood. This new prior also leads to fast posterior simulation—for a BVAR with 100 variables and 4 lags, obtaining 10,000 posterior draws takes less than half a minute on a standard desktop. We demonstrate the usefulness of the new prior via a structural analysis using a 15-variable VAR with sign restrictions to identify 5 structural shocks.

**KEYWORDS.** Shrinkage prior, marginal likelihood, optimal hyperparameters, structural VAR, sign restrictions.

**JEL CLASSIFICATION.** C11, C52, C55, E44.

### 1. INTRODUCTION

Large Bayesian vector autoregressions (BVARs) have become increasingly popular in empirical macroeconomics for forecasting and structural analysis since the influential work by Banbura, Giannone, and Reichlin (2010). Prominent examples include Carriero, Kapetanios, and Marcellino (2009), Koop (2013), Koop and Korobilis (2013), and Korobilis and Pettenuzzo (2019). VARs tend to have a lot of parameters, and the key that makes these highly parameterized VARs useful is the introduction of shrinkage priors. For large BVARs, one commonly adopted prior is the natural conjugate prior, which has a few advantages over alternatives. First, this prior is conjugate, and consequently it gives rise to a range of useful analytical results, including a closed-form expression of the marginal likelihood.<sup>1</sup> Second, the posterior covariance matrix of the VAR coeffi-

---

Joshua C. C. Chan: [joshuacc.chan@gmail.com](mailto:joshuacc.chan@gmail.com)

I would like to thank Todd Clark, Gary Koop, Christian Matthes, Michele Piffer, and two anonymous referees for many constructive comments and useful suggestions that have substantially improved a previous version of the paper.

<sup>1</sup>An analytical expression for the marginal likelihood is valuable for many purposes. First, it is useful for model selection, for example, choosing the lag length in BVARs. Second, it can be used to select prior hyperparameters that control the degree of shrinkage. Examples include Del Negro and Schorfheide (2004), Schorfheide and Song (2015), and Carriero, Clark, and Marcellino (2015). This approach of selecting hyper-

cients under this prior has a Kronecker product structure, which can be used to speed up computations.

On the other hand, a key limitation of the natural conjugate prior is that the prior covariance matrix of the VAR coefficients needs to have a Kronecker product structure, which implies cross-equation restrictions that might not be reasonable. In particular, this Kronecker structure requires symmetric treatment of own lags and lags of other variables. In many applications, one might wish to shrink the coefficients on other variables' lags more strongly to zero than those of own lags. This cross-variable shrinkage, however, cannot be implemented using the natural conjugate prior due to this Kronecker structure. [Carriero, Clark, and Marcellino \(2015\)](#) summarize this dilemma between computational convenience and prior flexibility as: "While the pioneering work of [Litterman \(1986\)](#) suggested it was useful to have cross-variable shrinkage, it has become more common to estimate larger models without cross-variable shrinkage, in order to have a Kronecker structure that speeds up computations and facilitates simulation."

We develop a prior that solves this dilemma—this new prior allows asymmetric treatment between own lags and lags of other variables, while it maintains many useful analytical results, such as a closed-form expression of the marginal likelihood. In addition, we exploit these analytical results to develop an efficient method to simulate directly from the posterior distribution—we obtain *independent* posterior draws and avoid Markov chain Monte Carlo (MCMC) methods altogether. For a BVAR with 100 variables and 4 lags, simulating 10,000 posterior draws under this new asymmetric conjugate prior takes less than 30 seconds.

To develop this asymmetric conjugate prior, we first write the BVAR in a recursive structural form, under which the error covariance matrix is diagonal. We then adopt an equation-by-equation estimation approach in the spirit of [Carriero, Clark, and Marcellino \(2019\)](#). In particular, we assume that the parameters are *a priori* independent across equations, that is, the joint prior density is a product of densities, each for the set of parameters in each equation. Under this setup, we show that if the VAR coefficients and the error variance in each equation follows a normal-inverse-gamma prior, the posterior distribution has the same form, that is, it is a product of normal-inverse-gamma densities. It is useful to emphasize that this particular structural-form parameterization is intended to be a computational device and it does not commit the user to a recursive identification scheme. In particular, one can recover the reduced-form parameters from the structural-form parameter, and the posterior sampler can be used in conjunction with other identification schemes, as demonstrated in the application.

To help elicit the hyperparameters in this asymmetric conjugate prior, we prove that if we assume a standard inverse-Wishart prior on the reduced-form error covariance matrix, the implied prior on the structural-form impact matrix and error variances is a product of normal-inverse-gamma densities and vice versa. Hence, using this proposition, we can first elicit the hyperparameters in the reduced-form prior, which

---

parameters is incorporated in the BEAR MATLAB toolbox developed by the European Central Bank ([Dieppe, Legrand, and Van Roye \(2016\)](#)).

is often more natural, and then obtain the implied hyperparameters in the structural-form prior. Since we can directly specify prior beliefs on the reduced-form error covariance matrix, this proposition implies that the proposed prior—with carefully chosen hyperparameters—is independent of the order of the variables.

We demonstrate the usefulness of the proposed asymmetric conjugate prior and the associated posterior sampler by revisiting the empirical study in [Furlanetto, Ravazzolo, and Sarferaz \(2019\)](#), who use 6-variable VAR to identify 5 structural shocks using a set of sign restrictions on the contemporaneous impact matrix. Here, we augment their system with a set of additional variables and consider a 15-variable VAR, which is one of the largest VARs identified with sign restrictions considered in the literature so far. Even though there are good reasons to consider larger systems—such as concerns of informational deficiency and nonunique mapping from economic variables to data—empirical works that impose sign restrictions typically use small or medium VARs (e.g., up to 6 or 7 variables) due to the computational burden. With more variables and sign restrictions, it is clear that conventional approaches that use standard Gibbs samplers are too computationally expensive. In contrast, using the proposed asymmetric conjugate prior and the associated efficient sampler, it is feasible to conduct structural analysis with a large number of sign restrictions, which helps sharpen inference.

The rest of the paper is organized as follows. We first introduce in Section 2 a reparameterization of the reduced-form BVAR and the new asymmetric conjugate prior. We then derive the associated posterior distribution and the marginal likelihood. Section 3 discusses a few extensions of the standard BVAR, and outlines the corresponding sampling schemes. It is followed by a structural analysis using sign restrictions to illustrate the usefulness of the proposed prior in Section 4. Lastly, Section 5 concludes and briefly discusses some future research directions.

## 2. BAYESIAN VARs AND CONJUGATE PRIORS

Let  $\mathbf{y}_t = (y_{1,t}, \dots, y_{n,t})'$  be an  $n \times 1$  vector of endogenous variables at time  $t$ . A standard VAR can be written as

$$\mathbf{y}_t = \tilde{\mathbf{b}} + \tilde{\mathbf{B}}_1 \mathbf{y}_{t-1} + \dots + \tilde{\mathbf{B}}_p \mathbf{y}_{t-p} + \tilde{\boldsymbol{\varepsilon}}_t^y, \quad \tilde{\boldsymbol{\varepsilon}}_t^y \sim \mathcal{N}(\mathbf{0}, \tilde{\boldsymbol{\Sigma}}), \quad (1)$$

where  $\tilde{\mathbf{b}}$  is an  $n \times 1$  vector of intercepts,  $\tilde{\mathbf{B}}_1, \dots, \tilde{\mathbf{B}}_p$  are  $n \times n$  VAR coefficient matrices, and  $\tilde{\boldsymbol{\Sigma}}$  is a full covariance matrix.

The parameters in this model can be naturally divided into two blocks: the error covariance matrix  $\tilde{\boldsymbol{\Sigma}}$  and the matrix of intercepts and VAR coefficients, that is,  $\tilde{\mathbf{B}} = (\tilde{\mathbf{b}}, \tilde{\mathbf{B}}_1, \dots, \tilde{\mathbf{B}}_p)'$ . Under this parameterization, there is a conjugate prior on  $(\tilde{\mathbf{B}}, \tilde{\boldsymbol{\Sigma}})$ , namely, the normal-inverse-Wishart distribution:

$$\tilde{\boldsymbol{\Sigma}} \sim \mathcal{IW}(\tilde{\nu}_0, \tilde{\mathbf{S}}_0), \quad (\text{vec}(\tilde{\mathbf{B}}) \mid \tilde{\boldsymbol{\Sigma}}) \sim \mathcal{N}(\text{vec}(\tilde{\mathbf{B}}_0), \tilde{\boldsymbol{\Sigma}} \otimes \tilde{\mathbf{V}}),$$

where  $\otimes$  denotes the Kronecker product,  $\text{vec}(\cdot)$  vectorizes a matrix by stacking the columns from left to right, and  $\mathcal{IW}$  denotes the inverse-Wishart distribution. This prior is commonly called the natural conjugate prior and can be traced back to [Zellner \(1971\)](#).

For textbook treatment of this prior and the associated posterior distribution see, for example, [Koop and Korobilis \(2010\)](#), [Karlsson \(2013\)](#), or [Chan \(2020b\)](#).

The main advantage of the natural conjugate prior is that it gives rise to a range of analytical results. For example, the associated posterior and one-step-ahead predictive distributions are both known; the marginal likelihood is also available in closed form. These analytical results are useful for a variety of purposes. For instance, the closed-form expression of the marginal likelihood under the natural conjugate prior can be used to calculate optimal hyperparameters, as is done in [Del Negro and Schorfheide \(2004\)](#), [Schorfheide and Song \(2015\)](#), and [Carriero, Clark, and Marcellino \(2015\)](#). The direct sampling algorithm to draw from the posterior distribution of  $(\text{vec}(\tilde{\mathbf{B}}), \tilde{\Sigma})$  can be used to develop efficient posterior samplers to estimate large, heteroscedastic Bayesian VARs. Examples include [Carriero, Clark, and Marcellino \(2016\)](#) and [Chan \(2020a\)](#).

On the other hand, one key drawback of the natural conjugate prior is that the prior covariance matrix of  $\text{vec}(\tilde{\mathbf{B}})$  is restrictive—to be conjugate it needs to have the Kronecker product structure  $\tilde{\Sigma} \otimes \tilde{\mathbf{V}}$ , which implies cross-equation restrictions on the covariance matrix. In particular, this structure requires symmetric treatment of own lags and lags of other variables. In many situations, one might want to shrink the coefficients on lags of other variables more strongly to zero than those of own lags. This prior belief, however, cannot be implemented using the natural conjugate prior due to the Kronecker structure.

Here, we develop a prior that solves this dilemma: this new prior allows asymmetric treatment between own lags and lags of other variables, while it maintains many useful analytical results. In what follows, we first consider a reparameterization of the reduced-form VAR in (1). We introduce in Section 2.2 the new asymmetric conjugate prior and discuss its properties. We then derive the associated posterior distribution and discuss an efficient sampling scheme in Section 2.3. Finally, we give an analytical expression of the marginal likelihood in Section 2.4.

### 2.1 The Bayesian VAR in structural form

In this section, we introduce a reparameterization of the reduced-form VAR in (1) and derive the associated likelihood function. To that end, we first write the VAR in the following structural form:

$$\mathbf{A}\mathbf{y}_t = \mathbf{b} + \mathbf{B}_1\mathbf{y}_{t-1} + \cdots + \mathbf{B}_p\mathbf{y}_{t-p} + \boldsymbol{\varepsilon}_t^y, \quad \boldsymbol{\varepsilon}_t^y \sim \mathcal{N}(\mathbf{0}, \Sigma), \quad (2)$$

where  $\mathbf{b}$  is an  $n \times 1$  vector of intercepts,  $\mathbf{B}_1, \dots, \mathbf{B}_p$  are  $n \times n$  VAR coefficient matrices,  $\mathbf{A}$  is an  $n \times n$  lower triangular matrix with ones on the diagonal, and  $\Sigma = \text{diag}(\sigma_1^2, \dots, \sigma_n^2)$  is diagonal. Since the covariance matrix  $\Sigma$  is diagonal, we can estimate this recursive system equation by equation without loss of efficiency.<sup>2</sup> It is easy to see that we can

<sup>2</sup>[Carriero, Clark, and Marcellino \(2019\)](#) pioneer a similar equation-by-equation estimation approach to estimate a large VAR with a standard stochastic volatility specification. However, they use the reduced-form parameterization in (1), whereas here we use the structural form in (2). As we will see below, the latter parameterization has the advantage of having a convenient representation as  $n$  independent regressions

recover the reduced-form parameters by setting  $\tilde{\mathbf{b}} = \mathbf{A}^{-1}\mathbf{b}$ ,  $\tilde{\mathbf{B}}_j = \mathbf{A}^{-1}\mathbf{B}_j$ ,  $j = 1, \dots, p$ , and  $\tilde{\Sigma} = \mathbf{A}^{-1}\Sigma(\mathbf{A}^{-1})'$ .

For later reference, we introduce some notation. Let  $b_i$  denote the  $i$ th element of  $\mathbf{b}$  and let  $\mathbf{b}_{j,i}$  represent the  $i$ th row of  $\mathbf{B}_j$ . Then  $\boldsymbol{\beta}_i = (b_i, \mathbf{b}_{1,i}, \dots, \mathbf{b}_{p,i})'$  is the intercept and VAR coefficients for the  $i$ th equation. Furthermore, let  $\boldsymbol{\alpha}_i$  denote the free elements in the  $i$ th row of the impact matrix  $\mathbf{A}$ , that is,  $\boldsymbol{\alpha}_i = (A_{i,1}, \dots, A_{i,i-1})'$ . We then follow [Chan and Eisenstat \(2018\)](#) to rewrite the  $i$ th equation of the system in (2) as

$$y_{i,t} = \tilde{\mathbf{w}}_{i,t}\boldsymbol{\alpha}_i + \tilde{\mathbf{x}}_t\boldsymbol{\beta}_i + \varepsilon_{i,t}^y, \quad \varepsilon_{i,t}^y \sim \mathcal{N}(0, \sigma_i^2),$$

where  $\tilde{\mathbf{w}}_{i,t} = (-y_{1,t}, \dots, -y_{i-1,t})$  and  $\tilde{\mathbf{x}}_t = (1, \mathbf{y}'_{t-1}, \dots, \mathbf{y}'_{t-p})$ . Note that  $y_{i,t}$  depends on the contemporaneous variables  $y_{1,t}, \dots, y_{i-1,t}$ . But since the system is triangular, when we perform the change of variables from  $\varepsilon_t^y$  to  $\mathbf{y}_t$  to obtain the likelihood function, the corresponding Jacobian has unit determinant and the likelihood function has the usual Gaussian form.

If we let  $\mathbf{x}_{i,t} = (\tilde{\mathbf{w}}_{i,t}, \tilde{\mathbf{x}}_t)$ , we can further simplify the  $i$ th equation as

$$y_{i,t} = \mathbf{x}_{i,t}\boldsymbol{\theta}_i + \varepsilon_{i,t}^y, \quad \varepsilon_{i,t}^y \sim \mathcal{N}(0, \sigma_i^2),$$

where  $\boldsymbol{\theta}_i = (\boldsymbol{\beta}'_i, \boldsymbol{\alpha}'_i)'$  is of dimension  $k_i = np + i$ . Hence, we have rewritten the structural VAR in (2) as a system of  $n$  independent regressions. Moreover, by stacking the elements of the impact matrix  $\boldsymbol{\alpha}_i$  and the VAR coefficients  $\boldsymbol{\beta}_i$ , we can sample them together to improve efficiency.<sup>3</sup>

To derive the likelihood function, we further stack  $\mathbf{y}_i = (y_{i,1}, \dots, y_{i,T})'$  and define  $\mathbf{X}_i$  and  $\boldsymbol{\varepsilon}_i^y$  similarly. Hence, we can rewrite the above equation as follows:

$$\mathbf{y}_i = \mathbf{X}_i\boldsymbol{\theta}_i + \boldsymbol{\varepsilon}_i^y, \quad \boldsymbol{\varepsilon}_i^y \sim \mathcal{N}(\mathbf{0}, \sigma_i^2\mathbf{I}_T).$$

Finally, let  $\boldsymbol{\theta} = (\boldsymbol{\theta}'_1, \dots, \boldsymbol{\theta}'_n)'$  and  $\boldsymbol{\sigma}^2 = (\sigma_1^2, \dots, \sigma_n^2)'$ . Then the likelihood function of the VAR in (2) is given by

$$p(\mathbf{y} | \boldsymbol{\theta}, \boldsymbol{\sigma}^2) = \prod_{i=1}^n p(\mathbf{y}_i | \boldsymbol{\theta}_i, \sigma_i^2) = \prod_{i=1}^n (2\pi\sigma_i^2)^{-\frac{T}{2}} e^{-\frac{1}{2\sigma_i^2}(\mathbf{y}_i - \mathbf{X}_i\boldsymbol{\theta}_i)'(\mathbf{y}_i - \mathbf{X}_i\boldsymbol{\theta}_i)}. \tag{3}$$

In other words, the likelihood function is the product of  $n$  Gaussian densities.

### 2.2 Asymmetric conjugate priors

Next, we introduce a conjugate prior on  $(\boldsymbol{\theta}, \boldsymbol{\sigma}^2)$  that allows differential treatment between prior variances on own lags versus others. We assume that the parameters are 

---

 and it consequently leads to a more efficient sampling scheme. [Ando and Zellner \(2010\)](#) also consider a similar reparameterization of the reduced-form VAR that allows equation-by-equation estimation. But in their implementation they need to switch between two parameterizations, which makes estimation more cumbersome.

<sup>3</sup>This more efficient blocking scheme has been used previously in the literature. For example, [Eisenstat, Chan, and Strachan \(2016\)](#) use it to speed up computations in the context of time-varying parameter VARs with stochastic volatility.

*a priori* independent across equations, that is,  $p(\boldsymbol{\theta}, \boldsymbol{\sigma}^2) = \prod_{i=1}^n p(\boldsymbol{\theta}_i, \sigma_i^2)$ . Furthermore, we consider a normal-inverse-gamma prior for each pair  $(\boldsymbol{\theta}_i, \sigma_i^2)$ ,  $i = 1, \dots, n$ :

$$(\boldsymbol{\theta}_i \mid \sigma_i^2) \sim \mathcal{N}(\bar{\mathbf{m}}_i, \sigma_i^2 \mathbf{V}_i), \quad \sigma_i^2 \sim \mathcal{IG}(\nu_i, S_i), \tag{4}$$

and we write  $(\boldsymbol{\theta}_i, \sigma_i^2) \sim \mathcal{NIG}(\mathbf{m}_i, \mathbf{V}_i, \nu_i, S_i)$ . In other words, the prior density of  $(\boldsymbol{\theta}, \boldsymbol{\sigma}^2)$  is given by

$$p(\boldsymbol{\theta}, \boldsymbol{\sigma}^2) = \prod_{i=1}^n c_i (\sigma_i^2)^{-(\nu_i+1+\frac{k_i}{2})} e^{-\frac{1}{\sigma_i^2}(S_i+\frac{1}{2}(\boldsymbol{\theta}_i-\mathbf{m}_i)'\mathbf{V}_i^{-1}(\boldsymbol{\theta}_i-\mathbf{m}_i))}, \tag{5}$$

where  $c_i = (2\pi)^{-\frac{k_i}{2}} |\mathbf{V}_i|^{-\frac{1}{2}} S_i^{\nu_i} / \Gamma(\nu_i)$ .<sup>4</sup>

Since the prior variance of each element of  $\boldsymbol{\theta}_i$  is controlled by the corresponding diagonal element of  $\mathbf{V}_i$ , it is obvious that this prior can accommodate different prior variances between own lags versus others. As we will show in the next section, this prior is also conjugate. To distinguish this from the natural conjugate prior, we call the prior in (4) the asymmetric conjugate prior. The hyperparameters of the asymmetric conjugate prior are  $\mathbf{m}_i$ ,  $\mathbf{V}_i$ ,  $\nu_i$ , and  $S_i$ ,  $i = 1, \dots, n$ . Next, we describe how one can elicit these hyperparameters.

First, partition  $\mathbf{m}_i = (\mathbf{m}'_{\boldsymbol{\beta},i}, \mathbf{m}'_{\boldsymbol{\alpha},i})$  and  $\mathbf{V}_i = \text{diag}(\mathbf{V}_{\boldsymbol{\beta},i}, \mathbf{V}_{\boldsymbol{\alpha},i})$ , where  $\mathbf{m}_{\boldsymbol{\alpha},i}$  and  $\mathbf{V}_{\boldsymbol{\alpha},i}$  are the hyperparameters corresponding to  $\boldsymbol{\alpha}_i$ , whereas  $\mathbf{m}_{\boldsymbol{\beta},i}$  and  $\mathbf{V}_{\boldsymbol{\beta},i}$  are those associated with  $\boldsymbol{\beta}_i$ . In what follows, we first discuss eliciting the hyperparameters associated with  $\boldsymbol{\alpha}_i$  and  $\sigma_i^2$ , that is,  $\mathbf{m}_{\boldsymbol{\alpha},i}$ ,  $\mathbf{V}_{\boldsymbol{\alpha},i}$ ,  $\nu_i$ , and  $S_i$ . We then introduce two Minnesota-type shrinkage priors for the VAR coefficients  $\boldsymbol{\beta}_i$ .

Since  $\boldsymbol{\alpha}_i$  and  $\sigma_i^2$  control the reduced-form error covariance matrix  $\tilde{\boldsymbol{\Sigma}} = \mathbf{A}^{-1} \boldsymbol{\Sigma} (\mathbf{A}^{-1})'$ , one concern is that an arbitrary choice of the hyperparameters for  $\boldsymbol{\alpha}_i$  and  $\sigma_i^2$  would induce some unreasonable prior on  $\tilde{\boldsymbol{\Sigma}}$ . For example, the implied prior on the  $i$ th diagonal element of  $\tilde{\boldsymbol{\Sigma}}$  might mechanically depend on its position in the  $n$ -tuple, that is, the induced prior on  $\tilde{\boldsymbol{\Sigma}}$  depends on the order of the variables and is not invariant to reordering. This problem is especially acute for large systems due to the fact that  $\mathbf{A}^{-1}$  is lower triangular.

To avoid this potential noninvariance problem, we instead specify a prior on the reduced-form error covariance matrix  $\tilde{\boldsymbol{\Sigma}}$ . And given this prior on  $\tilde{\boldsymbol{\Sigma}}$ , we then derive the implied prior on  $\boldsymbol{\alpha}_i$  and  $\sigma_i^2$ ,  $i = 1, \dots, n$ . Since we can directly elicit prior beliefs on the elements of  $\tilde{\boldsymbol{\Sigma}}$ , as a result these prior beliefs do not depend on the parameters' position in  $\tilde{\boldsymbol{\Sigma}}$ . To that end, we consider a standard inverse-Wishart prior on  $\tilde{\boldsymbol{\Sigma}}$  centered around  $\mathbf{S} = \text{diag}(s_1^2, \dots, s_n^2)$ , where  $s_i^2$  denotes the sample variance of the residuals from an AR(4) model for the variable  $i$ ,  $i = 1, \dots, n$ . More precisely,  $\tilde{\boldsymbol{\Sigma}} \sim \mathcal{IW}(\nu_0, \mathbf{S})$  with  $\nu_0 = n + 2$ . This prior on  $\tilde{\boldsymbol{\Sigma}}$  is commonly used in the literature (e.g., in Rao Kadiyala and Karlsson (1997),

<sup>4</sup>The proposed prior is related to the work of Baumeister and Hamilton (2015), who also consider equation-specific conjugate priors on the structural VAR coefficients and error variances. But since they consider a more general setting with a possibly nontriangular impact matrix  $\mathbf{A}$ , they need a Metropolis–Hastings step to explore the marginal posterior distribution  $\mathbf{A}$ . In contrast, in our special case with a lower triangular  $\mathbf{A}$ , the proposed prior can be shown to be conjugate and direct sampling of all the parameters is available.

Carriero, Clark, and Marcellino (2015)). It turns out that, quite remarkably, the implied prior on  $\alpha_i$  and  $\sigma_i^2$  is normal-inverse-gamma. The following proposition and corollary summarize this result.<sup>5</sup>

**PROPOSITION 1.** *Consider the following normal-inverse-gamma priors on the diagonal elements of  $\tilde{\Sigma}$  and the lower triangular elements of  $\mathbf{A}$ :*

$$\sigma_i^2 \sim \text{IG}\left(\frac{\nu_0 + i - n}{2}, \frac{s_i^2}{2}\right), \quad i = 1, \dots, n, \tag{6}$$

$$(A_{i,j} \mid \sigma_i^2) \sim \mathcal{N}\left(0, \frac{\sigma_i^2}{s_j^2}\right), \quad 1 \leq j < i \leq n, i = 2, \dots, n. \tag{7}$$

Then  $\tilde{\Sigma}^{-1} = \mathbf{A}'\tilde{\Sigma}^{-1}\mathbf{A}$  has the Wishart distribution  $\tilde{\Sigma}^{-1} \sim \mathcal{W}(\nu_0, \mathbf{S}^{-1})$ , where  $\mathbf{S} = \text{diag}(s_1^2, \dots, s_n^2)$ . It follows that  $\tilde{\Sigma} \sim \mathcal{IW}(\nu_0, \mathbf{S})$ .

The proof is given in the Appendix of the Online Supplementary Material (Chan (2022)). Since the mapping  $\tilde{\Sigma}^{-1} = \mathbf{A}'\tilde{\Sigma}^{-1}\mathbf{A}$  is one-to-one, the converse of Proposition 1 is also true.

**COROLLARY 1.** *Using the same notation as in Proposition 1, if  $\tilde{\Sigma} \sim \mathcal{IW}(\nu_0, \mathbf{S})$ , then the implied priors on  $A_{i,j}$  and  $\sigma_i^2$ ,  $i = 1, \dots, n$ ,  $j = 1, \dots, i - 1$ , are the normal-inverse-gamma distributions given in (6) and (7).*

The proof is given in the Appendix of the Online Supplementary Material. With these results, we can now make precise the claim that the proposed normal-inverse-gamma prior is independent of the order of the variables. Suppose the covariance matrix of the reduced-form error vector  $\tilde{\varepsilon}_t^y$  is  $\tilde{\Sigma}$ , which has the prior  $\mathcal{IW}(\nu_0, \mathbf{S})$ . We claim that if we change the order of the reduced-form errors, we can use the normal-inverse-gamma prior to specify an appropriate inverse-Wishart prior—we simply need to reorder the associated hyperparameters accordingly. More specifically, let  $\pi$  denote an arbitrary permutation of  $n$  elements with the associated permutation matrix  $\mathbf{P}_\pi$ . If we permute the order of the dependent variables via  $\mathbf{P}_\pi \mathbf{y}_t = (y_{\pi(1),t}, \dots, y_{\pi(n),t})'$ , its error covariance matrix is then  $\mathbf{P}_\pi \tilde{\Sigma} \mathbf{P}_\pi'$  and has the  $\mathcal{IW}(\nu_0, \mathbf{S}_\pi)$  distribution, where  $\mathbf{S}_\pi = \mathbf{P}_\pi \mathbf{S} \mathbf{P}_\pi' = \text{diag}(s_{\pi(1)}^2, \dots, s_{\pi(n)}^2)$ . Using Proposition 1, we can find a set of normal-inverse-gamma priors that induces this inverse-Wishart prior  $\mathcal{IW}(\nu_0, \mathbf{S}_\pi)$ . We summarize this result in the following corollary.

**COROLLARY 2.** *Suppose  $\tilde{\Sigma} \sim \mathcal{IW}(\nu_0, \mathbf{S})$  and let  $\pi$  denote a permutation of  $n$  elements with the associated permutation matrix  $\mathbf{P}_\pi$ . It follows that  $\mathbf{P}_\pi \tilde{\Sigma} \mathbf{P}_\pi' \sim \mathcal{IW}(\nu_0, \mathbf{S}_\pi)$ , where*

<sup>5</sup>In the context of a general structural VAR, Sims and Zha (1998) suggest precisely this approach of deriving the implied prior on the impact matrix from a natural prior (inverse-Wishart) on the error covariance matrix. However, under their parameterization (Cholesky factorization), the implied prior on the impact matrix is nonstandard. In contrast, we use a modified Cholesky factorization and the implied prior can be shown to be of the form of a normal-inverse-gamma distribution.



$\mathbf{S}_\pi = \text{diag}(s_{\pi(1)}^2, \dots, s_{\pi(n)}^2)$ . Consider the following normal-inverse-gamma priors on the diagonal elements of  $\tilde{\Sigma}$  and the lower triangular elements of  $\mathbf{A}$ :

$$\sigma_i^2 \sim \text{IG}\left(\frac{\nu_0 + i - n}{2}, \frac{s_{\pi(i)}^2}{2}\right), \quad i = 1, \dots, n,$$

$$(A_{i,j} | \sigma_i^2) \sim \mathcal{N}\left(0, \frac{\sigma_i^2}{s_{\pi(j)}^2}\right), \quad 1 \leq j < i \leq n, i = 2, \dots, n.$$

Then  $\tilde{\Sigma}^{-1} = \mathbf{A}'\tilde{\Sigma}^{-1}\mathbf{A}$  has the Wishart distribution  $\mathcal{W}(\nu_0, \mathbf{S}_\pi^{-1})$ . That is,  $\tilde{\Sigma} \sim \text{IW}(\nu_0, \mathbf{S}_\pi)$ .

The proof follows directly from Proposition 1. In addition, Proposition 1 holds for the more general case where  $\mathbf{S}$  is any symmetric positive definite matrix. That is, the induced priors on the structural-form variances are independent gamma distributions and the conditional priors of the free elements of  $\mathbf{A}$  are normal distributions. But unlike the previous case with diagonal  $\mathbf{S}$ , here the free elements in the same row of  $\mathbf{A}$  are correlated. We summarize the results in the following corollary.<sup>6</sup> Its proof is given in the Online Appendix.

**COROLLARY 3.** Suppose  $\tilde{\Sigma} \sim \text{IW}(\nu_0, \mathbf{R})$ , where  $\mathbf{R}$  is a symmetric positive definite matrix. Factor  $\tilde{\Sigma}^{-1} = \mathbf{C}'\tilde{\Sigma}^{-1}\mathbf{C}$  and  $\mathbf{R}^{-1} = \mathbf{L}'\mathbf{S}^{-1}\mathbf{L}$ , where  $\mathbf{C}$  and  $\mathbf{L}$  are lower triangular matrices with ones on the main diagonal,  $\tilde{\Sigma} = \text{diag}(\sigma_1^2, \dots, \sigma_n^2)$  and  $\mathbf{S} = \text{diag}(s_1^2, \dots, s_n^2)$  are diagonal matrices. Let  $\mathbf{c}_i$  denote the free elements of the  $i$ th row of  $\mathbf{C}$ , that is,  $\mathbf{c}_i = (C_{i,1}, \dots, C_{i,i-1})'$ , and let  $\mathbf{L}_{1:i-1}$  denote the  $(i-1) \times (i-1)$  matrix that consists of the first  $(i-1)$  rows and columns of  $\mathbf{L}$ . Similarly, define  $\mathbf{l}_i$  and  $\mathbf{S}_{1:i-1}$ . Then the implied priors on  $\mathbf{c}_i$  and  $\sigma_i^2$  are

$$\sigma_i^2 \sim \text{IG}\left(\frac{\nu_0 + i - n}{2}, \frac{s_i^2}{2}\right), \quad i = 1, \dots, n, \tag{8}$$

$$(\mathbf{c}_i | \sigma_i^2) \sim \mathcal{N}(\mathbf{l}_i, \sigma_i^2 \mathbf{L}'_{1:i-1} \mathbf{S}_{1:i-1}^{-1} \mathbf{L}_{1:i-1}), \quad i = 2, \dots, n. \tag{9}$$

Since the mapping  $\tilde{\Sigma}^{-1} = \mathbf{C}'\tilde{\Sigma}^{-1}\mathbf{C}$  is one-to-one, the converse is also true. That is, if we assume that  $(\mathbf{c}_i, \sigma_i^2)$  follows the normal-inverse-gamma distributions given in (8) and (9), then the implied prior on  $\tilde{\Sigma}$  is inverse-Wishart:  $\tilde{\Sigma} \sim \text{IW}(\nu_0, \mathbf{R})$ .

Hence, the above proposition and corollaries give us a guide to elicit the hyperparameters associated with  $\alpha_i$  and  $\sigma_i^2$ . In our baseline case, we set  $\nu_i = 1 + i/2$ ,  $S_i = s_i^2/2$ ,  $\mathbf{m}_{\alpha,i} = \mathbf{0}$  and  $\mathbf{V}_{\alpha,i} = \text{diag}(1/s_1^2, \dots, 1/s_{i-1}^2)$ . These values imply that the prior on the reduced-form error covariance matrix is  $\tilde{\Sigma} \sim \text{IW}(n+2, \mathbf{S})$  with prior mean  $\mathbf{S}$ . Furthermore, if we wish to have an inverse-Wishart prior on  $\tilde{\Sigma}$  with a nondiagonal prior mean, we can simply use Corollary 3 to elicit the associated values for  $\mathbf{m}_{\alpha,i}$  and  $\mathbf{V}_{\alpha,i}$ .

<sup>6</sup>Chan and Jeliazkov (2009) have shown a similar result. However, their proof is not sufficiently constructive and they did not give an explicit mapping between the inverse-Wishart parameters and the normal-inverse-gamma parameters.

Next, we describe two ways to set the hyperparameters  $\mathbf{m}_{\beta,i}$  and  $\mathbf{V}_{\beta,i}$ . The first approach directly elicits prior beliefs on the structural VAR coefficients  $\beta_i$ . The idea of cross-variable shrinkage in this setting has been previously explored in [Leeper, Sims, and Zha \(1996\)](#) and [Sims and Zha \(1998\)](#). We therefore follow [Sims and Zha \(1998\)](#), who consider Minnesota-type shrinkage priors for VAR coefficients in the structural form.<sup>7</sup> More specifically, we set  $\mathbf{m}_{\beta,i} = \mathbf{0}$  to shrink the VAR coefficients to zero for growth rates data; for level data,  $\mathbf{m}_{\beta,i}$  is set to be zero as well except the coefficient associated with the first own lag, which is set to be one.

Recall that  $\mathbf{V}_{\beta,i}$  is the ratio of the prior covariance matrix of  $\beta_i$  relative to the error variance  $\sigma_i^2$ . Similar to the Minnesota prior, here we assume  $\mathbf{V}_{\beta,i}$  to be diagonal with the  $k$ th diagonal element  $(\mathbf{V}_{\beta,i})_k$  set to be:

$$(\mathbf{V}_{\beta,i})_k = \begin{cases} \frac{\kappa_1}{l^2 s_i^2}, & \text{for the coefficient on the } l\text{th lag of variable } i, \\ \frac{\kappa_2}{l^2 s_j^2}, & \text{for the coefficient on the } l\text{th lag of variable } j, j \neq i, \\ \kappa_3, & \text{for the intercept.} \end{cases}$$

The hyperparameter  $\kappa_1$  controls the overall shrinkage strength for coefficients on own lags, whereas  $\kappa_2$  controls those on lags of other variables. These two hyperparameters will play a key role in the empirical analysis, and we will select them optimally by maximizing the associated marginal likelihood. We set  $\kappa_3 = 100$ , which implies essentially no shrinkage for the intercepts.<sup>8</sup>

By contrast, in the second approach we first elicit the prior means and variances on the reduced-form VAR coefficients. We then derive the implied prior means and variances on the structural-form VAR coefficients. Since the prior beliefs are elicited on the reduced-form parameters, this approach is comparable to commonly-used Minnesota priors on the reduced-form parameters. More specifically, let  $\tilde{\mathbf{m}}_{\beta,i}$  and  $\sigma_i^2 \tilde{\mathbf{V}}_{\beta,i}$  denote the prior mean vector and covariance matrix of the reduced-form parameters  $\tilde{\beta}_i$ —these hyperparameters can be elicited similarly as above. For later reference, we let  $\tilde{\kappa}_1$  and  $\tilde{\kappa}_2$  denote the corresponding shrinkage hyperparameters. Finally, let  $\mathbf{m}_{\beta,i}$  and  $\sigma_i^2 \mathbf{V}_{\beta,i}$  denote the corresponding hyperparameters of the structural-form parameters  $\beta_i$ . The Online Appendix provides the details of the derivation and the explicit formulas of  $\mathbf{m}_{\beta,i}$  and  $\mathbf{V}_{\beta,i}$  using  $\tilde{\mathbf{m}}_{\beta,i}$  and  $\tilde{\mathbf{V}}_{\beta,i}$  as inputs. Both approaches give a normal-inverse-gamma prior of the form given in (4).

<sup>7</sup>As noted by [Sims and Zha \(1998\)](#), a general structural VAR is a simultaneous equations model and there is no dependent variable in an equation (other than an arbitrary normalization). Hence, the distinction between “own” lags versus “others” is not meaningful. However, our setup is the special case of a recursive system, where there is a natural dependent variable in each equation. Hence, we can distinguish between “own” versus “other” lags.

<sup>8</sup>In principle, one can select  $\kappa_3$  optimally as well, but the corresponding optimization is more costly to solve. More generally, high-dimensional numerical optimization using derivative-free methods is time consuming. One feasible alternative is to use automatic differentiation to obtain the relevant partial derivatives, which are then fed to numerical optimization routines that use these partial derivatives to more efficiently find the maximizer. See [Chan, Jacobi, and Zhu \(2020\)](#) for an example.

### 2.3 Posterior distribution and efficient sampling

In this section, we first derive the posterior distribution of  $(\boldsymbol{\theta}, \boldsymbol{\sigma}^2)$  under the asymmetric conjugate prior and show that it has indeed the same form as the prior. Then we describe an efficient method for posterior simulation.

Since both the likelihood in (3) and the prior in (5) have the product form, we can estimate each pair  $(\boldsymbol{\theta}_i, \sigma_i^2)$  separately. More specifically, the posterior distribution of  $(\boldsymbol{\theta}, \boldsymbol{\sigma}^2)$  is given by

$$\begin{aligned} p(\boldsymbol{\theta}, \boldsymbol{\sigma}^2 | \mathbf{y}) &\propto p(\boldsymbol{\theta}, \boldsymbol{\sigma}^2) p(\mathbf{y} | \boldsymbol{\theta}, \boldsymbol{\sigma}^2) \\ &= \prod_{i=1}^n p(\boldsymbol{\theta}_i, \sigma_i^2) p(\mathbf{y}_i | \boldsymbol{\theta}_i, \sigma_i^2) \\ &= \prod_{i=1}^n c_i (\sigma_i^2)^{-(\nu_i+1+\frac{k_i}{2})} e^{-\frac{1}{\sigma_i^2} (S_i+\frac{1}{2}(\boldsymbol{\theta}_i-\mathbf{m}_i)' \mathbf{V}_i^{-1}(\boldsymbol{\theta}_i-\mathbf{m}_i))} \times (2\pi\sigma_i^2)^{-\frac{T}{2}} e^{-\frac{1}{2\sigma_i^2} (\mathbf{y}_i-\mathbf{X}_i\boldsymbol{\theta}_i)' (\mathbf{y}_i-\mathbf{X}_i\boldsymbol{\theta}_i)} \\ &= \prod_{i=1}^n c_i (2\pi)^{-\frac{T}{2}} (\sigma_i^2)^{-(\nu_i+\frac{T+k_i}{2}+1)} e^{-\frac{1}{\sigma_i^2} (S_i+\frac{1}{2}(\boldsymbol{\theta}_i'(\mathbf{V}_i^{-1}+\mathbf{X}_i'\mathbf{X}_i)\boldsymbol{\theta}_i-2\boldsymbol{\theta}_i'(\mathbf{V}_i^{-1}\mathbf{m}_i+\mathbf{X}_i'\mathbf{y}_i)+\mathbf{m}_i'\mathbf{V}_i^{-1}\mathbf{m}_i+\mathbf{y}_i'\mathbf{y}_i))} \\ &= \prod_{i=1}^n c_i (2\pi)^{-\frac{T}{2}} (\sigma_i^2)^{-(\nu_i+\frac{T+k_i}{2}+1)} e^{-\frac{1}{\sigma_i^2} (\widehat{S}_i+\frac{1}{2}(\boldsymbol{\theta}_i-\widehat{\boldsymbol{\theta}}_i)' \mathbf{K}_{\boldsymbol{\theta}_i}(\boldsymbol{\theta}_i-\widehat{\boldsymbol{\theta}}_i))}, \end{aligned}$$

where  $\mathbf{K}_{\boldsymbol{\theta}_i} = \mathbf{V}_i^{-1} + \mathbf{X}_i'\mathbf{X}_i$ ,  $\widehat{\boldsymbol{\theta}}_i = \mathbf{K}_{\boldsymbol{\theta}_i}^{-1}(\mathbf{V}_i^{-1}\mathbf{m}_i + \mathbf{X}_i'\mathbf{y}_i)$  and  $\widehat{S}_i = S_i + (\mathbf{y}_i'\mathbf{y}_i + \mathbf{m}_i'\mathbf{V}_i^{-1}\mathbf{m}_i - \widehat{\boldsymbol{\theta}}_i'\mathbf{K}_{\boldsymbol{\theta}_i}\widehat{\boldsymbol{\theta}}_i)/2$ . Hence, the posterior distribution is a product of  $n$  normal-inverse-gamma distributions and we have

$$(\boldsymbol{\theta}_i, \sigma_i^2 | \mathbf{y}) \sim \mathcal{NIG}\left(\widehat{\boldsymbol{\theta}}_i, \mathbf{K}_{\boldsymbol{\theta}_i}^{-1}, \nu_i + \frac{T}{2}, \widehat{S}_i\right), \quad i = 1, \dots, n. \quad (10)$$

Using properties of the normal-inverse-gamma distribution, it is easy to see that the posterior means of  $\boldsymbol{\theta}_i$  and  $\sigma_i^2$  are respectively  $\widehat{\boldsymbol{\theta}}_i$  and  $\widehat{S}_i/(\nu_i + T/2 - 1)$ . Other posterior moments can also be obtained by using similar properties of the normal-inverse-gamma distribution. For other quantities of interest where analytical results are not available, we can estimate them by posterior simulation. For example, the  $h$ -step-ahead predictive distribution of  $\mathbf{y}_{T+h}$  is nonstandard. But we can obtain posterior draws from  $p(\boldsymbol{\theta}, \boldsymbol{\sigma}^2 | \mathbf{y})$  to construct the  $h$ -step-ahead predictive distribution.

In what follows, we outline an efficient method to simulate a sample of size  $M$  from the posterior distribution. Here, we can directly generate *independent* draws from the posterior distribution as opposed to MCMC draws that are correlated by construction. First, note that  $(\boldsymbol{\theta}, \boldsymbol{\sigma}^2 | \mathbf{y})$  is a product of  $n$  normal-inverse-gamma distributions as given in (10). Thus, we can sample each pair  $(\boldsymbol{\theta}_i, \sigma_i^2 | \mathbf{y})$  individually. Next, we can sample  $(\boldsymbol{\theta}_i, \sigma_i^2 | \mathbf{y})$  in two steps. First, we draw  $\sigma_i^2$  marginally from  $(\sigma_i^2 | \mathbf{y}) \sim \mathcal{IG}(\nu_i + T/2, \widehat{S}_i)$ . Then, given the  $\sigma_i^2$  sampled, we obtain  $\boldsymbol{\theta}_i$  from the conditional distribution

$$(\boldsymbol{\theta}_i | \mathbf{y}, \sigma_i^2) \sim \mathcal{N}(\widehat{\boldsymbol{\theta}}_i, \sigma_i^2 \mathbf{K}_{\boldsymbol{\theta}_i}^{-1}).$$

Here, the covariance matrix  $\sigma_i^2 \mathbf{K}_{\theta_i}^{-1}$  is of dimension  $k_i = np + i$ . When  $n$  is large, sampling from this normal distribution using conventional methods—based on the Cholesky factor of  $\sigma_i^2 \mathbf{K}_{\theta_i}^{-1}$ —is computationally intensive for two reasons. First, inverting the  $k_i \times k_i$  matrix  $\mathbf{K}_{\theta_i}$  to obtain the covariance matrix  $\sigma_i^2 \mathbf{K}_{\theta_i}^{-1}$  is computationally costly. Second, the Cholesky factor of the covariance matrix needs to be computed  $M$  times—once for each draw of  $\sigma_i^2$  from the marginal distribution. It turns out that both of these computationally intensive steps can be avoided.

To that end, we introduce the following notation: given a nonsingular square matrix  $\mathbf{F}$  and a conformable vector  $\mathbf{d}$ , let  $\mathbf{F} \backslash \mathbf{d}$  denote the unique solution to the linear system  $\mathbf{F}\mathbf{z} = \mathbf{d}$ , that is,  $\mathbf{F} \backslash \mathbf{d} = \mathbf{F}^{-1} \mathbf{d}$ . When  $\mathbf{F}$  is lower triangular, this linear system can be solved quickly by forward substitution; when  $\mathbf{F}$  is upper triangular, it can be solved by backward substitution.<sup>9</sup> Now, compute the Cholesky factor  $\mathbf{C}_{\mathbf{K}_{\theta_i}}$  of  $\mathbf{K}_{\theta_i}$  such that  $\mathbf{K}_{\theta_i} = \mathbf{C}_{\mathbf{K}_{\theta_i}} \mathbf{C}'_{\mathbf{K}_{\theta_i}}$ . Note that this needs to be done only once. Let  $\mathbf{u}$  be a  $k_i \times 1$  vector of independent sample from  $\mathcal{N}(0, \sigma_i^2)$ . Then return

$$\widehat{\boldsymbol{\theta}}_i + \mathbf{C}'_{\mathbf{K}_{\theta_i}} \backslash \mathbf{u},$$

which has the  $\mathcal{N}(\widehat{\boldsymbol{\theta}}_i, \sigma_i^2 \mathbf{K}_{\theta_i}^{-1})$  distribution.<sup>10</sup> Finally, we can further speed up the computations by vectorizing all operations to obtain  $M$  posterior draws instead of using for-loops.

This sampling scheme is more efficient than the method in [Carriero, Clark, and Marcellino \(2019\)](#), who propose estimating the reduced-form parameters equation-by-equation. The main reason is that their method requires computing the Cholesky factor of every sampled reduced-form error covariance matrix (e.g., a total of  $M$  times for  $M$  draws as they use MCMC). In contrast, the proposed method needs to compute the Cholesky factor of the error covariance matrix only once, because here it does not depend on the sampled coefficients (i.e., the proposed sampler is not a Gibbs sampler). This difference becomes more important when  $n$  becomes larger, as number of operations for computing the Cholesky factor of an  $n \times n$  matrix is  $\mathcal{O}(n^3)$ .

To get a sense of how long it takes to obtain posterior draws using the proposed algorithm, we fit Bayesian VARs of different sizes, each with  $p = 4$  lags. The algorithm is implemented using `MATLAB` on a desktop with an Intel Core i7-7700 @3.60 GHz processor and 64GB memory. The computation times (in seconds) to obtain 10,000 posterior draws of  $(\boldsymbol{\theta}, \boldsymbol{\sigma}^2)$  are reported in [Table 1](#). As it is evident from the table, the proposed method is fast and scales well. It also compares favorably to the algorithm in [Carriero, Clark, and Marcellino \(2019\)](#), especially when  $n$  is large. For example, for a large BVAR with  $n = 100$  variables, the proposed method takes about half a minute to obtain 10,000 posterior draws. In comparison, using the algorithm in [Carriero, Clark, and Marcellino \(2019\)](#) takes about 43 minutes.<sup>11</sup>

<sup>9</sup>Forward and backward substitutions are implemented in standard packages such as `MATLAB`, `GAUSS` and `R`. In `MATLAB`, for example, it is done by `mldivide(F, d)` or simply `F \ d`.

<sup>10</sup>Note that  $\widehat{\boldsymbol{\theta}}_i$  can be obtained similarly without explicitly computing the inverse of  $\mathbf{K}_{\theta_i}$ . Specifically, it is easy to see that  $\widehat{\boldsymbol{\theta}}_i$  can be calculated as  $\mathbf{C}'_{\mathbf{K}_{\theta_i}} \backslash (\mathbf{C}_{\mathbf{K}_{\theta_i}} \backslash (\mathbf{V}_i^{-1} \mathbf{m}_i + \mathbf{X}'_i \mathbf{y}_i))$  by forward then backward substitution. Also note that since  $\mathbf{V}_i^{-1}$  is diagonal, its inverse is straightforward to compute.

<sup>11</sup>As recently pointed out in [Bognanni \(2021\)](#), the original algorithm in [Carriero, Clark, and Marcellino \(2019\)](#) is not exact and can only be viewed as an approximation. The corrected algorithm described in Car-

TABLE 1. The computation times (in seconds) to obtain 10,000 posterior draws of  $(\boldsymbol{\theta}, \boldsymbol{\sigma}^2)$  using the proposed method compared to the method in [Carriero, Clark, and Marcellino \(2019\)](#). All BVARs have  $p = 4$  lags.

	$n = 25$	$n = 50$	$n = 100$
Proposed method	1.3	6.8	28
CCM	58	238	2574

## 2.4 The marginal likelihood

In this section, we provide an analytical expression of the marginal likelihood. This closed-form expression is useful for a range of purposes, such as obtaining optimal hyperparameters or designing efficient estimation algorithms for more flexible Bayesian VARs.

To prevent arithmetic underflow and overflow, we evaluate the marginal likelihood in log scale. Given the likelihood function in (3) and the asymmetric conjugate prior in (5), the associated log marginal likelihood of the VAR has the following analytical expression:

$$\begin{aligned} \log p(\mathbf{y}) = & -\frac{Tn}{2} \log(2\pi) + \sum_{i=1}^n \left[ -\frac{1}{2} (\log |\mathbf{V}_i| + \log |\mathbf{K}_{\boldsymbol{\theta}_i}|) \right. \\ & \left. + \log \Gamma\left(\nu_i + \frac{T}{2}\right) + \nu_i \log S_i - \log \Gamma(\nu_i) - \left(\nu_i + \frac{T}{2}\right) \log \widehat{S}_i \right]. \end{aligned} \quad (11)$$

The details of the derivation are given in Appendix B. The above expression is straightforward to evaluate. We only note that to compute the log determinant  $\log |\mathbf{K}_{\boldsymbol{\theta}_i}|$ , it is numerically more stable to first compute its Cholesky factor  $\mathbf{C}_{\mathbf{K}_{\boldsymbol{\theta}_i}}$  and return  $2 \sum \log c_{ii}$ , where  $c_{ii}$  is the  $i$ th diagonal element of the  $\mathbf{C}_{\mathbf{K}_{\boldsymbol{\theta}_i}}$ .

## 3. EXTENSIONS

In this section, we briefly discuss how we can use the above analytical results and the efficient sampling scheme in more general settings. Suppose we augment our BVAR in (3) to the model  $p(\mathbf{y} | \boldsymbol{\theta}, \boldsymbol{\sigma}^2, \boldsymbol{\gamma})$  with the additional parameter vector  $\boldsymbol{\gamma}$ . Further, consider the prior  $p(\boldsymbol{\theta}, \boldsymbol{\sigma}^2, \boldsymbol{\gamma}) = p(\boldsymbol{\theta}, \boldsymbol{\sigma}^2 | \boldsymbol{\gamma}) p(\boldsymbol{\gamma})$ , where  $p(\boldsymbol{\theta}, \boldsymbol{\sigma}^2 | \boldsymbol{\gamma})$  is the asymmetric conjugate prior that could potentially depend on  $\boldsymbol{\gamma}$  and the marginal prior  $p(\boldsymbol{\gamma})$  is left unspecified for now. Before we discuss some efficient posterior samplers, we first give two examples that fit into this framework.

In our first example, we augment the BVAR by treating the hyperparameters  $\kappa_1$  and  $\kappa_2$  as parameters to be estimated. That is,  $\boldsymbol{\gamma} = (\kappa_1, \kappa_2)'$ . This extension is useful as it takes into account the parameter uncertainty of  $\kappa_1$  and  $\kappa_2$  (see also [Giannone, Lenza,](#)

---

riero, Chan, Clark, and Marcellino (2021) is about 3–10 times slower than the original algorithm, depending on the size of the system. Hence, the advantage of our posterior sampler is even more substantial when the corrected algorithm is used.

and Primiceri (2015)). This extension is considered in the empirical application. In our second example, we extend the BVAR by adding an MA(1) component to each equation:

$$y_{i,t} = \mathbf{x}_{i,t} \boldsymbol{\theta}_i + \varepsilon_{i,t}^y,$$

$$\varepsilon_{i,t}^y = u_{i,t} + \psi_i u_{i,t-1},$$

where  $u_{i,t} \sim \mathcal{N}(0, \sigma_i^2)$ ,  $t = 1, \dots, T$ ,  $i = 1, \dots, n$ . In this case,  $\boldsymbol{\gamma} = (\psi_1, \dots, \psi_n)'$ . This extension is motivated by the empirical finding that allowing for moving average errors often improves forecast performance (see, e.g., Chan (2013, 2020a)).

Both examples fit into the framework with likelihood  $p(\mathbf{y} | \boldsymbol{\theta}, \boldsymbol{\sigma}^2, \boldsymbol{\gamma})$  and prior  $p(\boldsymbol{\theta}, \boldsymbol{\sigma}^2, \boldsymbol{\gamma})$ . One natural posterior sampler is to construct a Markov chain by sequentially sampling from  $p(\boldsymbol{\theta}, \boldsymbol{\sigma}^2 | \mathbf{y}, \boldsymbol{\gamma})$  and  $p(\boldsymbol{\gamma} | \mathbf{y}, \boldsymbol{\theta}, \boldsymbol{\sigma}^2)$ . The first density is a product of normal-inverse-gamma densities, and we can efficiently obtain a draw from it as described before. The second density depends on the model, but it is often easy to sample from.<sup>12</sup>

Alternatively, a more efficient approach is the collapsed sampler that samples from  $p(\boldsymbol{\gamma} | \mathbf{y})$ . This sampling scheme is typically more efficient as it integrates out the high-dimensional parameters  $(\boldsymbol{\theta}, \boldsymbol{\sigma}^2)$  analytically. The density  $p(\boldsymbol{\gamma} | \mathbf{y})$  can be evaluated quickly since

$$p(\boldsymbol{\gamma} | \mathbf{y}) \propto p(\mathbf{y} | \boldsymbol{\gamma}) p(\boldsymbol{\gamma}),$$

where  $p(\mathbf{y} | \boldsymbol{\gamma})$  is the “marginal likelihood” of the standard BVAR. For instance, for the first example with  $\boldsymbol{\gamma} = (\kappa_1, \kappa_2)'$ , the quantity  $p(\mathbf{y} | \boldsymbol{\gamma})$  is exactly as the analytical expression given in (11). Finally, given the posterior draws of  $\boldsymbol{\gamma}$ , we can obtain the posterior draws of  $(\boldsymbol{\theta}, \boldsymbol{\sigma}^2)$  from  $p(\boldsymbol{\theta}, \boldsymbol{\sigma}^2 | \mathbf{y}, \boldsymbol{\gamma})$ .

#### 4. APPLICATION: IDENTIFYING FINANCIAL SHOCKS

In this section, we illustrate the usefulness of the proposed asymmetric conjugate prior by revisiting the empirical study in Furlanetto, Ravazzolo, and Sarferaz (2019), who identify financial shocks in a VAR using sign restrictions. More specifically, for their baseline they consider a 6-variable VAR—using US data on GDP, prices, interest rate, investment, stock prices, and credit spread—to identify demand, supply, monetary, investment, and financial shocks using a set of sign restrictions on the contemporaneous impact matrix. Here, we revisit their empirical study by using a larger set of variables and consider a 15-variable VAR.

There are a few reasons in favor of using a larger set of macroeconomic and financial variables. First, there is the concern of informational deficiency of using a limited information set. As pointed out in the seminal papers by Hansen and Sargent (1991) and Lippi and Reichlin (1993, 1994), when the econometrician considers a narrower set of

<sup>12</sup>For our first example with a low-dimensional  $\boldsymbol{\gamma} = (\kappa_1, \kappa_2)'$ , an independent-chain Metropolis–Hastings algorithm can be easily constructed. For our second example with  $\boldsymbol{\gamma} = (\psi_1, \dots, \psi_n)'$ , it turns out that we can factor  $p(\boldsymbol{\gamma} | \mathbf{y}, \boldsymbol{\theta}, \boldsymbol{\sigma}^2) = p(\boldsymbol{\psi} | \mathbf{y}, \boldsymbol{\theta}, \boldsymbol{\sigma}^2) = \prod_{i=1}^n p(\psi_i | \mathbf{y}, \boldsymbol{\theta}, \boldsymbol{\sigma}^2)$ . Then each  $\psi_i$  can be simulated using the method in Chan (2013).

variables than the economic agent, the underlying model used by the econometrician is nonfundamental, in the sense that current and past observations of the variables do not span the same space spanned by the structural shocks. Consequently, structural shocks cannot be recovered from the model. Using a larger set of relevant variables can alleviate this concern (see, e.g., [Gambetti \(2021\)](#), for a recent review on nonfundamentality).

Second, the mapping from variables in an economic model to the data is typically not unique. For example, take the economic variable inflation. Should one match it to the data based on the CPI, PCE, or the GDP deflator ([Loria, Matthes, and Wang \(2020\)](#))? One natural way to circumvent an arbitrary choice is to include multiple data series corresponding to the same economic variable in the analysis. An added benefit of this approach is that by using more data series (and the corresponding sign restrictions), one often obtains sharper inference.

While [Furlanetto, Ravazzolo, and Sarferaz \(2019\)](#) consider a noninformative prior for their 6-variable VAR, shrinkage is essential here for our much larger system. In particular, we use the proposed asymmetric conjugate prior to shrink the VAR coefficients in a data-based manner. After describing the macroeconomic data set in Section 4.1, we first present the estimates of the shrinkage hyperparameters in Section 4.2, highlighting the empirical relevance of allowing for different levels of shrinkage on own lags and other lags. We then conduct a structural analysis with sign restrictions in Section 4.3.

#### 4.1 Data

The data set for our empirical application consists of 15 US quarterly variables and the sample period is from 1985:Q1 to 2019:Q4. These variables are constructed from raw time-series obtained from various sources, including the FRED database at the Federal Reserve Bank of St. Louis and the Federal Reserve Bank of Philadelphia. The complete list of these time-series and their sources are given in Appendix A.

In addition to the 6 variables used in the baseline model in [Furlanetto, Ravazzolo, and Sarferaz \(2019\)](#)— namely, real GDP, GDP deflator, 3-month treasury rate, ratio of private investment over output, S&P 500 index, and a credit spread defined as the difference between Moody's baa corporate bond yield and the federal funds rate— we include 9 additional macroeconomic and financial variables, such as ratio of total credit over real estate value, industrial production, mortgage rates, as well as other measures of inflation, interest rates, and stock prices. These 15 variables are listed in Table 3.

#### 4.2 Optimal shrinkage hyperparameters

In this section, we fit the 15-variable VAR with the proposed asymmetric conjugate prior. More specifically, we implement the version that elicits prior beliefs on the reduced-form parameters  $\tilde{\beta}_i$  with hyperparameters  $\tilde{\kappa}_1$  and  $\tilde{\kappa}_2$ . We obtain the optimal hyperparameter values by maximizing the log marginal likelihood. The results are reported in Table 2.

For comparison, we also consider two useful benchmarks. In the first case, we set  $\tilde{\kappa}_1 = \tilde{\kappa}_2 = \tilde{\kappa}$  and maximize the log marginal likelihood with respect to  $\tilde{\kappa}$  only. This benchmark mimics the standard practice of using the natural conjugate prior that does not

TABLE 2. Optimal values of the hyperparameters under the symmetric prior ( $\tilde{\kappa}_1 = \tilde{\kappa}_2$ ), the subjective prior (Carriero, Clark, and Marcellino (2015)) and the proposed asymmetric prior (elicited on the reduced-form parameters).

	Symmetric prior	Subjective prior	Asymmetric prior
$\tilde{\kappa}_1$	0.008	0.040	0.058
$\tilde{\kappa}_2$	0.008	0.0016	0.0043
log-ML	4333.3	4329.8	4341.6

distinguish between own lags and lags of other variables. We refer to this version as the symmetric prior. The second benchmark is a set of subjectively chosen values that apply cross-variable shrinkage. In particular, we follow Carriero, Clark, and Marcellino (2015) and consider  $\tilde{\kappa}_1 = 0.04$  and  $\tilde{\kappa}_2 = 0.0016$ . This second benchmark is referred to as the subjective prior.

Under the symmetric prior with the restriction that  $\tilde{\kappa}_1 = \tilde{\kappa}_2$ , the optimal hyperparameter value is 0.008. If we allow  $\tilde{\kappa}_1$  and  $\tilde{\kappa}_2$  to be different, we obtain very different results: the optimal value for  $\tilde{\kappa}_1$  increases more than 7 times to 0.058, whereas the optimal value of  $\tilde{\kappa}_2$  reduces by about half to 0.0043. These results suggest that the data prefers shrinking the coefficients on lags of other variables much more aggressively to zero than those on own lags. This makes intuitive sense as one would expect, on average, a variable's own lags would contain more information about its future evolution than lags of other variables. By relaxing the restriction that  $\tilde{\kappa}_1 = \tilde{\kappa}_2$ , the marginal likelihood value increases by about 4000. If we were to test the hypothesis that  $\tilde{\kappa}_1 = \tilde{\kappa}_2$ , this large difference in marginal likelihood values would have decidedly reject it.

In addition, the optimal values of  $\tilde{\kappa}_1$  and  $\tilde{\kappa}_2$  under the asymmetric prior are also quite different from those of the subjective prior with  $\tilde{\kappa}_1 = 0.04$  and  $\tilde{\kappa}_2 = 0.0016$ . By selecting the values of  $\tilde{\kappa}_1$  and  $\tilde{\kappa}_2$  optimally, one can increase the marginal likelihood value by more than 13,000. These results suggest that the subjective prior shrinks both the coefficients on own and other lags too aggressively for our data set.

We have so far taken the empirical Bayes approach of choosing hyperparameter values by maximizing the log marginal likelihood. A fully Bayesian approach would specify proper priors on  $\tilde{\kappa}_1$  and  $\tilde{\kappa}_2$  and obtain the corresponding posterior distribution. The latter approach has the additional advantage of being able to quantify parameter uncertainty of  $\tilde{\kappa}_1$  and  $\tilde{\kappa}_2$ . In view of this, we take a fully Bayesian approach and treat  $\tilde{\kappa}_1$  and  $\tilde{\kappa}_2$  as parameters to be estimated. Specifically, we assume a uniform prior on the unit square  $(0, 1) \times (0, 1)$  for  $\tilde{\kappa}_1$  and  $\tilde{\kappa}_2$ , and compute the marginal posterior distribution of  $\tilde{\kappa}_1$  and  $\tilde{\kappa}_2$ . The contour plot of the joint posterior density is reported in Figure 1.

As the contour plot in the right panel shows, most of the mass of  $\tilde{\kappa}_1$  lies between 0.03 and 0.09, whereas the mass of  $\tilde{\kappa}_2$  is mostly between 0.002 and 0.007. That is,  $\tilde{\kappa}_1$  tends to be an order of magnitude larger than  $\tilde{\kappa}_2$ . These results confirm the conclusion that one should shrink the coefficients on other lags much more aggressively to zero than those on own lags. Moreover, since there is virtually no mass along the diagonal line  $\tilde{\kappa}_1 = \tilde{\kappa}_2$ , requiring them to be the same as in the natural conjugate prior appears



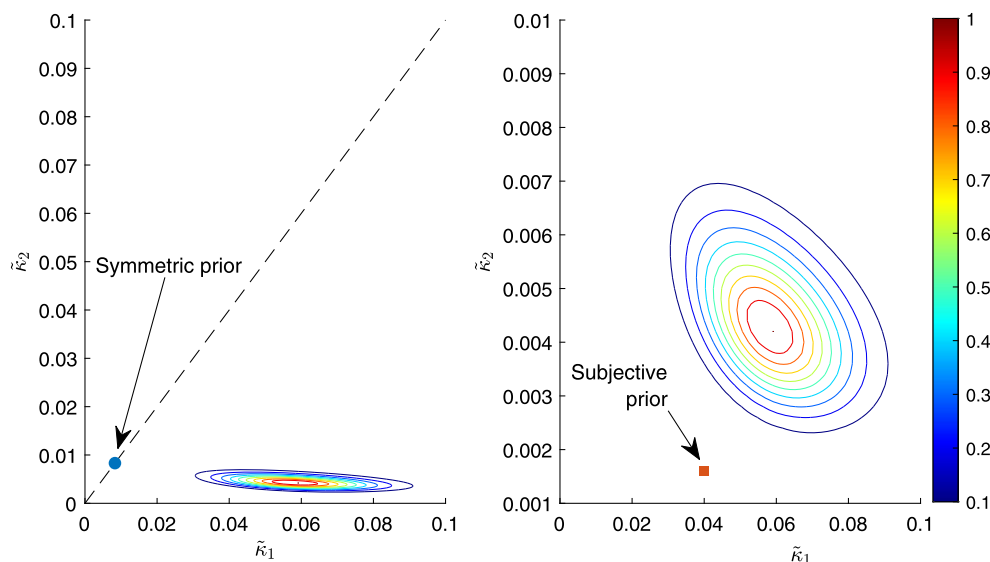


FIGURE 1. Contour plot of the joint posterior density of  $\tilde{\kappa}_1$  and  $\tilde{\kappa}_2$ . The mode of the density is normalized to one for easy comparison.

to be too restrictive. As a comparison, we also plot the values of  $\tilde{\kappa}_1$  and  $\tilde{\kappa}_2$  under the symmetric and subjective priors. As is evident from the figure, the values under both priors are far from the high-density region of the posterior distribution.

Overall, the estimation results indicate that the optimal hyperparameter values could be very different from some subjectively chosen values commonly used in empirical work. In addition, they also highlight the importance of allowing for different levels of shrinkage on own versus other lags and, therefore, the empirical relevance of the proposed asymmetric conjugate prior.

#### 4.3 Sign restrictions and impulse responses

Next, we revisit the empirical application in Furlanetto, Ravazzolo, and Sarferaz (2019) that identifies financial shocks using sign restrictions on the contemporaneous impact matrix. We first replicate their baseline results from a 6-variable VAR to identify 5 structural shocks, namely, demand, supply, monetary, investment, and financial shocks. We then consider a larger, 15-variable VAR with the asymmetric conjugate prior to identify the same structural shocks.

For the replication exercise, we use the same 6 variables and the associated sign restrictions considered in Furlanetto, Ravazzolo, and Sarferaz (2019), which are listed in the first 6 rows of Table 3. The sign restrictions to identify supply, demand, and monetary shocks are standard and are consistent with a wide range of dynamic stochastic general equilibrium models (see, e.g., Canova and Paustian (2011)). To disentangle investment and financial shocks from demand shocks, they are assumed to have different effects on the ratio of investment over output. More specifically, positive investment and financial shocks have a positive effect on the ratio, which is in line with the idea that these

TABLE 3. Sign restrictions and identified shocks.

	Supply	Demand	Monetary	Investment	Financial
GDP	+	+	+	+	+
GDP deflator	−	+	+	+	+
3-month t-bill rate	NA	+	−	+	+
Investment/output	NA	−	NA	+	+
S&P 500	+	NA	NA	−	+
Spread	NA	NA	NA	NA	NA
Spread 2	NA	NA	NA	NA	NA
Credit/Real estate value	NA	NA	NA	NA	NA
Mortgage rates	NA	NA	NA	NA	NA
CPI	−	+	+	+	+
PCE	−	+	+	+	+
employment	NA	NA	NA	NA	NA
Industrial production	+	+	+	+	+
1-year t-bill rate	NA	+	−	+	+
DJIA	+	NA	NA	−	+

*Note:* Spread is defined as the difference between Moody's baa corporate bond yield and the federal funds rate; Spread 2 is the difference between Moody's baa corporate bond yield and 10-year treasury yield.

shocks create investment booms. In contrast, positive demand shocks reduce the ratio of investment over output—investment level can still increase in response to demand shocks, but not as much as other components of the output.

Finally, stock prices are used to disentangle investment shocks from financial shocks, following the influential paper by [Christiano, Motto, and Rostagno \(2014\)](#). In particular, investment shocks are assumed to have a negative impact on the stock prices, whereas financial shocks have a positive impact. The first assumption captures the idea that investment shocks are shocks to the supply of capital, which generate negative comovements between the stock of capital and its price, where the price of capital is viewed as a proxy of the value of equity. In contrast, financial shocks are shocks to the demand for capital, which generate positive comovements between the stock of capital and its price.

We then augment the 6-variable VAR with 9 additional variables. Some of the new variables are alternative time series corresponding to a particular economic variable (e.g., CPI and PCE as prices; the Dow Jones Industrial Average as stock prices). In those cases, the same sign restrictions for the economic variable as discussed above are imposed. In addition, we also include a few other seemingly relevant variables to alleviate the concern of informational deficiency. The additional variables and the corresponding sign restrictions are listed in rows 7–15 of Table 3.

Given the posterior draws of the parameters, the algorithm proposed in [Rubio-Ramirez, Waggoner, and Zha \(2010\)](#) is used to incorporate the sign restrictions to construct impulse responses. This procedure can be computationally intensive when the number of variables and the number of identified shocks are large. In particular, when there are a large number of sign restrictions, it is not uncommon to require millions of

posterior draws to obtain enough samples that satisfy all the sign restrictions.<sup>13</sup> For instance, Furlanetto, Ravazzolo, and Sarferaz (2019) consider a noninformative prior and construct impulse responses using a standard Gibbs sampler in conjunction with the algorithm in Rubio-Ramirez, Waggoner, and Zha (2010). They report estimation time of about a week for the 6-variable VAR using a 12-core workstation. For our 15-variable VAR with more sign restrictions, it would be extremely computationally expensive to use a standard Gibbs sampler to obtain enough posterior draws. To make estimation feasible, we adopt the proposed asymmetric conjugate prior and the associated efficient sampler to generate posterior draws of the structural parameters. These structural parameters are then transformed to the corresponding reduced-form parameters, which are then used to construct candidate impulse responses.

We first report results from the baseline model in Furlanetto, Ravazzolo, and Sarferaz (2019) using the asymmetric conjugate prior elicited on the reduced-form parameters and an updated data set. Since an improper (noninformative) prior is used in the original study, to make our results comparable, we consider a proper but relatively vague prior by setting  $\tilde{\kappa}_1 = \tilde{\kappa}_2 = 1$ . Figure 2 plots the impulse responses of the 6 variables to an one-standard-deviation financial shock.

Despite using a different prior and dataset, our results are remarkably similar to those reported in Figure 1 of Furlanetto, Ravazzolo, and Sarferaz (2019). In particular, we also find a large effect on GDP and a relatively smaller impact on prices. The responses of investment and stock prices are persistent. In particular, the credible intervals exclude 0 for the first 7 quarters after impact for both variables. It is also interesting to note that even though the responses of the credit spread are unrestricted in the estimation, they are strongly countercyclical—this highlights the fact that the estimated structural shock behaves like a financial stock. The only noticeable difference is that our median responses of prices are all positive, whereas those in Furlanetto, Ravazzolo, and Sarferaz (2019) have mixed signs (although the credible intervals in both cases are relatively wide and include 0 for some periods).

As a comparison, we also compute the corresponding impulse responses under a standard independent normal and inverse-Wishart priors: a Minnesota prior on the VAR coefficients with hyperparameters  $\tilde{\kappa}_1 = \tilde{\kappa}_2 = 1$  and an inverse-Wishart prior on  $\tilde{\Sigma}$ . The results are almost identical to those obtained under the asymmetric conjugate prior (results are reported in the Online Appendix), suggesting any minor differences from Furlanetto, Ravazzolo, and Sarferaz (2019) are likely due to a slightly different data set used.

Next, we construct the impulse responses from the 15-variable VAR. Given the large number of VAR coefficients, appropriate shrinkage is vital in this case. We therefore ob-

<sup>13</sup>There are different implementations of the algorithm in Rubio-Ramirez, Waggoner, and Zha (2010). One common approach, as is done in Furlanetto, Ravazzolo, and Sarferaz (2019), is to combine every uniform draw from the orthogonal group  $O(n)$  with a new posterior draw to generate candidate impulse responses. If the impulse responses do not satisfy all the sign restrictions, a new orthogonal matrix and a new posterior draw are used to generate candidate impulse responses. Alternatively, one can reuse the posterior draw and only generate a new orthogonal matrix. In this case, the number of posterior draws required can be reduced. But to ensure the algorithm terminates, one typically sets an upper bound on the number of times a posterior draw can be reused.

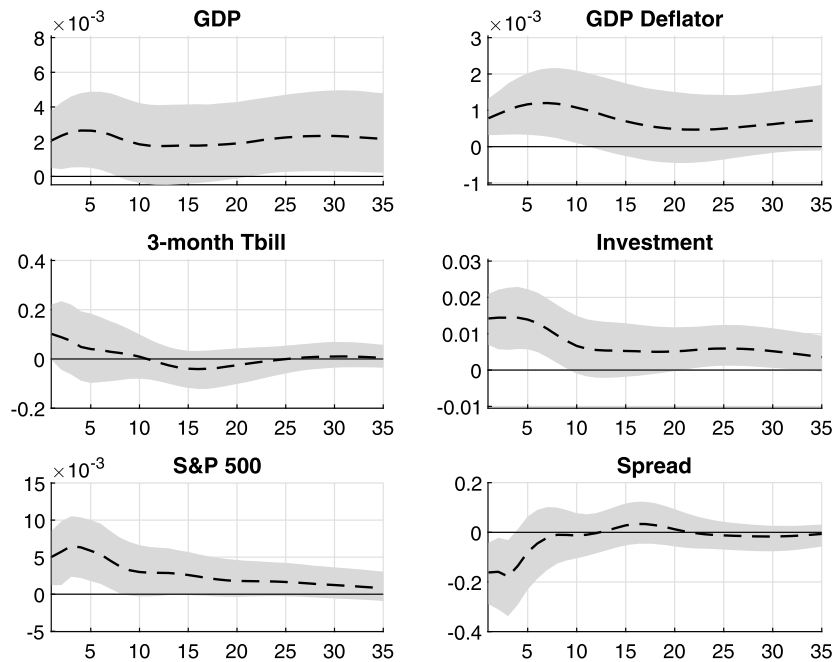


FIGURE 2. Impulse responses from a 6-variable VAR with the asymmetric conjugate prior to an one-standard-deviation financial shock. The shaded region represents the 16th and 84th percentiles.

tain the optimal shrinkage hyperparameters by maximizing the marginal likelihood of the VAR with the asymmetric conjugate prior. As reported in Section 4.2, the optimal shrinkage hyperparameters are found to be  $\tilde{\kappa}_1 = 0.058$  and  $\tilde{\kappa}_2 = 0.0043$ . The following results are based on these hyperparameter values.

Figure 3 reports the impulse responses of the same 6 variables to an one-standard-deviation financial shock. Compared to the results from the 6-variable VAR depicted in Figure 2, the median responses are mostly the same, but the credible intervals are substantially narrower. For example, the responses of GDP are much more precisely estimated—the credible intervals exclude 0 for the first 30 quarters after impact. These results highlight the usefulness of the proposed asymmetric conjugate prior and the value of including more variables and sign restrictions in identifying structural shocks.

As mentioned earlier, there are typically multiple data series corresponding to the same economic variable. And it is often unclear which one should be used, if only one variable is to be selected. In our application, for example, the time-series GDP deflator, CPI and PCE are all good candidates for the economic variable prices. Instead of picking one out of the three candidates, we include them all in the analysis. Figure 4 reports impulse responses of the three measure of prices to an one-standard-deviation financial shock. The median responses of the three variables are all positive and have very similar shapes. However, their credible intervals are somewhat different—only in the case of CPI do the credible intervals mostly exclude 0. If one had only used CPI, one might have

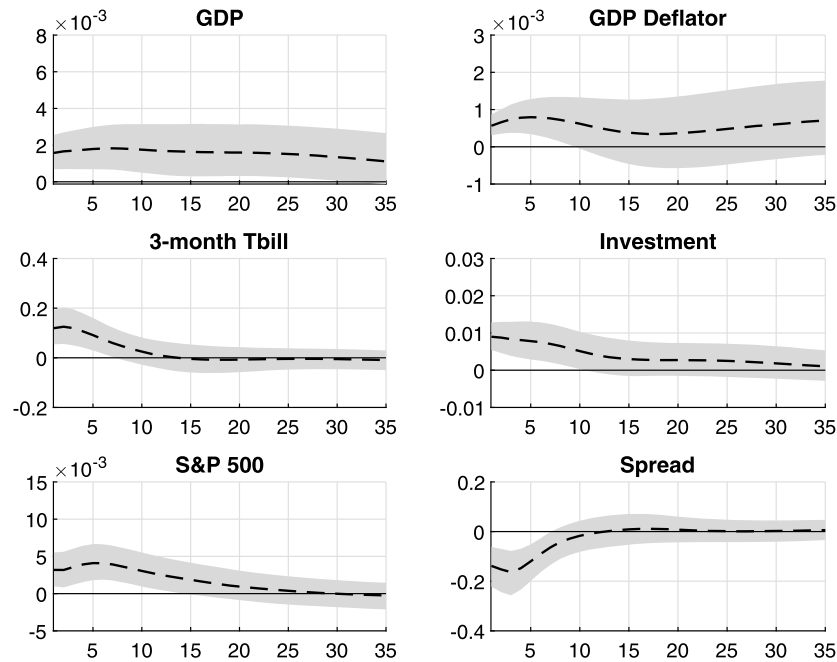


FIGURE 3. Impulse responses from a 15-variable VAR with the asymmetric conjugate prior to an one-standard-deviation financial shock. The shaded region represents the 16th and 84th percentiles.

drawn a stronger conclusion than it is warranted. This again highlights the benefit of including more variables and performing a more comprehensive structural analysis.

## 5. CONCLUDING REMARKS AND FUTURE RESEARCH

We developed a new asymmetric conjugate prior for large BVARs that can accommodate cross-variable shrinkage, while maintaining many useful analytical results as the natural conjugate prior. Using the new prior and the associated efficient sampler, we were able

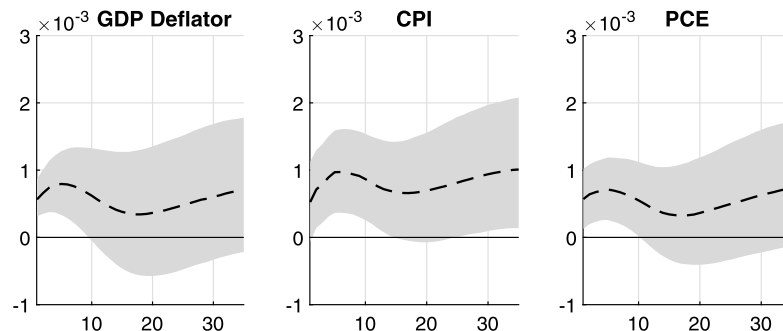


FIGURE 4. Impulse responses of prices to an one-standard-deviation financial shock. The shaded region represents the 16th and 84th percentiles.

to identify 5 structural shocks using a 15-variable VAR with a set of sign restrictions on the contemporaneous impact matrix. We showed that the larger number of variables and sign restrictions—when used in conjunction with the asymmetric conjugate prior—can sharpen inference on impulse responses.

There is now a large empirical literature that shows that models with stochastic volatility tend to forecast substantially better (Clark (2011), D’Agostino, Gambetti, and Giannone (2013), Cross and Poon (2016)). In future work, it would be useful to develop similar efficient posterior samplers for large BVARs with stochastic volatility, such as the models in Carriero, Clark, and Marcellino (2019) and Chan, Eisenstat, and Strachan (2020). In addition, it would be interesting to use Proposition 1 to construct a multivariate stochastic volatility model that is invariant to reordering of the variables.

#### APPENDIX A: DATA

This [Appendix](#) provides the details of the raw data used to construct the variables in the empirical application. In particular, Table 4 lists the variables and their sources. The sample period is from 1985:Q1 to 2019:Q4.

#### APPENDIX B: DERIVATION OF THE MARGINAL LIKELIHOOD

In this [Appendix](#), we prove that the marginal likelihood of the VAR( $p$ ) under the asymmetric conjugate prior in (4) has the following expression:

$$p(\mathbf{y}) = \prod_{i=1}^n (2\pi)^{-\frac{T}{2}} |\mathbf{V}_i|^{-\frac{1}{2}} |\mathbf{K}_{\boldsymbol{\theta}_i}|^{-\frac{1}{2}} \frac{\Gamma(\nu_i + T/2) S_i^{\nu_i}}{\Gamma(\nu_i) \widehat{S}_i^{\nu_i + \frac{T}{2}}}.$$

This result follows from direct computation:

$$\begin{aligned} p(\mathbf{y}) &= \prod_{i=1}^n p(\mathbf{y}_i) \\ &= \prod_{i=1}^n \int p(\boldsymbol{\theta}_i, \sigma_i^2) p(\mathbf{y}_i | \boldsymbol{\theta}_i, \sigma_i^2) d(\boldsymbol{\theta}_i, \sigma_i^2) \\ &= \prod_{i=1}^n c_i (2\pi)^{-\frac{T}{2}} \int (\sigma_i^2)^{-(\nu_i + \frac{T+k_i}{2} + 1)} e^{-\frac{1}{\sigma_i^2} (\widehat{S}_i + \frac{1}{2} (\boldsymbol{\theta}_i - \widehat{\boldsymbol{\theta}}_i)' \mathbf{K}_{\boldsymbol{\theta}_i} (\boldsymbol{\theta}_i - \widehat{\boldsymbol{\theta}}_i))} d(\boldsymbol{\theta}_i, \sigma_i^2) \\ &= \prod_{i=1}^n c_i (2\pi)^{-\frac{T}{2}} (2\pi)^{\frac{k_i}{2}} |\mathbf{K}_{\boldsymbol{\theta}_i}^{-1}|^{\frac{1}{2}} \frac{\Gamma(\nu_i + T/2)}{\widehat{S}_i^{\nu_i + \frac{T}{2}}} \\ &= \prod_{i=1}^n (2\pi)^{-\frac{T}{2}} |\mathbf{V}_i|^{-\frac{1}{2}} |\mathbf{K}_{\boldsymbol{\theta}_i}|^{-\frac{1}{2}} \frac{\Gamma(\nu_i + T/2) S_i^{\nu_i}}{\Gamma(\nu_i) \widehat{S}_i^{\nu_i + \frac{T}{2}}}. \end{aligned}$$

TABLE 4. Description of variables used in the empirical application.

Variable	Description	Source
GDP	Log of real GNP/GDP	Federal Reserve Bank of Philadelphia
GDP Deflator	Log of price index of GNP/GDP	Federal Reserve Bank of Philadelphia
3-month treasury bill	3-month treasury bill rate	Federal Reserve Bank of St. Louis
Investment	Log of real gross private domestic investment	Federal Reserve Bank of St. Louis
S&P 500	Log of S&P 500	Yahoo Finance
Total credit	Log of loans to nonfinancial private sector	Board of Governors of the Federal Reserve System
Mortgages	Log of home mortgages of households and nonprofit organizations	Federal Reserve Bank of St. Louis
Real estate value	Log of real estate at market value of households and nonprofit organizations	Federal Reserve Bank of St. Louis
Corporate bond yield	Moody's baa corporate bond yield	Federal Reserve Bank of St. Louis
10-year treasury note	10-year treasury constant maturity rate	Federal Reserve Bank of St. Louis
Federal funds rate	Federal funds rate	Federal Reserve Bank of St. Louis
Mortgage rate	30-year fixed rate mortgage average	Federal Reserve Bank of St. Louis
CPI	Log of consumer price index	Federal Reserve Bank of St. Louis
PCE	Log of price index of personal consumption expenditure	Federal Reserve Bank of St. Louis
Employment	Log of employment level	Federal Reserve Bank of St. Louis
Industrial production	Log of industrial production index	Federal Reserve Bank of St. Louis
1-year treasury bill	1-year treasury constant maturity rate	Federal Reserve Bank of St. Louis
Dow Jones Industrial Average	Log of Dow Jones Industrial Average index	Google Finance

where  $c_i = (2\pi)^{-\frac{k_i}{2}} |\mathbf{V}_i|^{-\frac{1}{2}} S_i^{\nu_i} / \Gamma(\nu_i)$ ,  $\mathbf{K}_{\theta_i} = \mathbf{V}_i^{-1} + \mathbf{X}_i' \mathbf{X}_i$ ,  $\hat{\boldsymbol{\theta}}_i = \mathbf{K}_{\theta_i}^{-1} (\mathbf{V}_i^{-1} \mathbf{m}_i + \mathbf{X}_i' \mathbf{y}_i)$  and  $\hat{S}_i = S_i + (\mathbf{y}_i' \mathbf{y}_i + \mathbf{m}_i' \mathbf{V}_i^{-1} \mathbf{m}_i - \hat{\boldsymbol{\theta}}_i' \mathbf{K}_{\theta_i} \hat{\boldsymbol{\theta}}_i) / 2$ . In the above derivation, we have used the fact that

$$\int (\sigma_i^2)^{-(\nu_i + \frac{T+k_i}{2} + 1)} e^{-\frac{1}{\sigma_i^2} (\hat{S}_i + \frac{1}{2} (\boldsymbol{\theta}_i - \hat{\boldsymbol{\theta}}_i)' \mathbf{K}_{\theta_i} (\boldsymbol{\theta}_i - \hat{\boldsymbol{\theta}}_i))} = (2\pi)^{\frac{k_i}{2}} |\mathbf{K}_{\theta_i}^{-1}|^{\frac{1}{2}} \frac{\Gamma(\nu_i + T/2)}{\hat{S}_i^{\nu_i + \frac{T}{2}}}.$$

The above equality holds because the quantity on the right-hand side is the normalizing constant of the  $(\boldsymbol{\theta}_i, \sigma_i^2) \sim \mathcal{NIG}(\mathbf{m}_i, \mathbf{V}_i, \nu_i, S_i)$  distribution.

#### REFERENCES

Ando, Tomohiro and Arnold Zellner (2010), "Hierarchical Bayesian analysis of the seemingly unrelated regression and simultaneous equations models using a combination of direct Monte Carlo and importance sampling techniques." *Bayesian Analysis*, 5 (1), 65–95. [1149]

- Banbura, Marta, Domenico Giannone, and Lucrezia Reichlin (2010), “Large Bayesian vector autoregressions.” *Journal of Applied Econometrics*, 25 (1), 71–92. [1145]
- Baumeister, Christiane and James D. Hamilton (2015), “Sign restrictions, structural vector autoregressions, and useful prior information.” *Econometrica*, 83 (5), 1963–1999. [1150]
- Bognanni, Mark (2021), “Comment on ‘Large Bayesian vector autoregressions with stochastic volatility and non-conjugate priors.’” *Journal of Econometrics*. [1155]
- Canova, Fabio and Matthias Paustian (2011), “Business cycle measurement with some theory.” *Journal of Monetary Economics*, 58 (4), 345–361. [1160]
- Carriero, Andrea, Joshua C. C. Chan, Todd E. Clark, and Massimiliano G. Marcellino (2021), “Corrigendum to: Large Bayesian vector autoregressions with stochastic volatility and non-conjugate priors.” *Journal of Econometrics*. [1156]
- Carriero, Andrea, Todd E. Clark, and Massimiliano G. Marcellino (2015), “Bayesian VARs: Specification choices and forecast accuracy.” *Journal of Applied Econometrics*, 30 (1), 46–73. [1145, 1146, 1148, 1151, 1159]
- Carriero, Andrea, Todd E. Clark, and Massimiliano G. Marcellino (2016), “Common drifting volatility in large Bayesian VARs.” *Journal of Business and Economic Statistics*, 34 (3), 375–390. [1148]
- Carriero, Andrea, Todd E. Clark, and Massimiliano G. Marcellino (2019), “Large Bayesian vector autoregressions with stochastic volatility and non-conjugate priors.” *Journal of Econometrics*, 212 (1), 137–154. [1146, 1148, 1155, 1156, 1165]
- Carriero, Andrea, George Kapetanios, and Massimiliano Marcellino (2009), “Forecasting exchange rates with a large Bayesian VAR.” *International Journal of Forecasting*, 25 (2), 400–417. [1145]
- Chan, Joshua C. C. (2013), “Moving average stochastic volatility models with application to inflation forecast.” *Journal of Econometrics*, 176 (2), 162–172. [1157]
- Chan, Joshua C. C. (2020a), “Large Bayesian VARs: A flexible Kronecker error covariance structure.” *Journal of Business and Economic Statistics*, 38 (1), 68–79. [1148, 1157]
- Chan, Joshua C. C. (2020b), “Large Bayesian vector autoregressions.” In *Macroeconomic Forecasting in the Era of Big Data* (Peter Fuleky, ed.), 95–125, Springer. [1148]
- Chan, Joshua C. C. (2022), “Supplement to ‘Asymmetric conjugate priors for large Bayesian VARs.’” *Quantitative Economics Supplemental Material*, 13, <https://doi.org/10.3982/QE1381>. [1151]
- Chan, Joshua C. C. and Eric Eisenstat (2018), “Comparing hybrid time-varying parameter VARs.” *Economics Letters*, 171, 1–5. [1149]
- Chan, Joshua C. C., Eric Eisenstat, and Rodney W. Strachan (2020), “Reducing the state space dimension in a large TVP-VAR.” *Journal of Econometrics*, 218 (1), 105–118. [1165]



- Chan, Joshua C. C., Liana Jacobi, and Dan Zhu (2020), “Efficient selection of hyperparameters in large Bayesian vars using automatic differentiation.” *Journal of Forecasting*, 39 (6), 934–943. [1153]
- Chan, Joshua C. C. and Ivan Jeliazkov (2009), “MCMC estimation of restricted covariance matrix.” *Journal of Computational and Graphical Statistics*, 18, 457–480. [1152]
- Christiano, Lawrence J., Roberto Motto, and Massimo Rostagno (2014), “Risk shocks.” *American Economic Review*, 104 (1), 27–65. [1161]
- Clark, Todd E. (2011), “Real-time density forecasts from Bayesian vector autoregressions with stochastic volatility.” *Journal of Business and Economic Statistics*, 29 (3), 327–341. [1165]
- Cross, Jamie and Aubrey Poon (2016), “Forecasting structural change and fat-tailed events in Australian macroeconomic variables.” *Economic Modelling*, 58, 34–51. [1165]
- D’Agostino, Antonello, Luca Gambetti, and Domenico Giannone (2013), “Macroeconomic forecasting and structural change.” *Journal of Applied Econometrics*, 28, 82–101. [1165]
- Del Negro, Marco and Frank Schorfheide (2004), “Priors from general equilibrium models for VARs.” *International Economic Review*, 45, 643–673. [1145, 1148]
- Dieppe, Alistair, Romain Legrand, and Björn Van Roye (2016). The BEAR toolbox. ECB Working Paper 1934. [1146]
- Eisenstat, Eric, Joshua C. C. Chan, and Rodney W. Strachan (2016), “Stochastic model specification search for time-varying parameter VARs.” *Econometric Reviews*, 35 (8-10), 1638–1665. [1149]
- Furlanetto, Francesco, Francesco Ravazzolo, and Samad Sarferaz (2019), “Identification of financial factors in economic fluctuations.” *The Economic Journal*, 129 (617), 311–337. [1147, 1157, 1158, 1160, 1162]
- Gambetti, Luca (2021), “Shocks, information, and structural vars.” In *Oxford Research Encyclopedia of Economics and Finance*, Oxford University Press. [1158]
- Giannone, Domenico, Michele Lenza, and Giorgio E. Primiceri (2015), “Prior selection for vector autoregressions.” *Review of Economics and Statistics*, 97 (2), 436–451. [1156, 1157]
- Hansen, Lars P. and Thomas J. Sargent (1991), “Two difficulties in interpreting vector autoregressions.” In *Rational Expectations Econometrics* (L. P. Hansen and T. J. Sargent, eds.), 77–119, Westview Press. [1157]
- Karlsson, Sune (2013), “Forecasting with Bayesian vector autoregressions.” In *Handbook of Economic Forecasting* (G. Elliott and A. Timmermann, eds.), Handbook of Economic Forecasting, Vol. 2, 791–897, Elsevier. [1148]
- Koop, Gary (2013), “Forecasting with medium and large Bayesian VARs.” *Journal of Applied Econometrics*, 28 (2), 177–203. [1145]

- Koop, Gary and Dimitris Korobilis (2010), “Bayesian multivariate time series methods for empirical macroeconomics.” *Foundations and Trends in Econometrics*, 3 (4), 267–358. [1148]
- Koop, Gary and Dimitris Korobilis (2013), “Large time-varying parameter VARs.” *Journal of Econometrics*, 177 (2), 185–198. [1145]
- Korobilis, Dimitris and Davide Pettenuzzo (2019), “Adaptive hierarchical priors for high-dimensional vector autoregressions.” *Journal of Econometrics*, 212 (1), 241–271. [1145]
- Leeper, Eric M., Christopher A. Sims, and Tao Zha (1996), “What does monetary policy do?” *Brookings papers on economic activity*, 1996 (2), 1–78. [1153]
- Lippi, Marco and Lucrezia Reichlin (1993), “The dynamic effects of aggregate demand and supply disturbances.” *Comment. The American Economic Review*, 83 (3), 644–652. [1157]
- Lippi, Marco and Lucrezia Reichlin (1994), “VAR analysis, nonfundamental representations, Blaschke matrices.” *Journal of Econometrics*, 63 (1), 307–325. [1157]
- Litterman, Robert B. (1986), “Forecasting with Bayesian vector autoregressions — five years of experience.” *Journal of Business and Economic Statistics*, 4, 25–38. [1146]
- Loria, Francesca, Christian Matthes, and Mu-Chun Wang (2020), “Economic theories and macroeconomic reality.” *Journal of Monetary Economics*. [1158]
- Rao Kadiyala, K. and Sune Karlsson (1997), “Numerical methods for estimation and inference in Bayesian VAR-models.” *Journal of Applied Econometrics*, 12 (2), 99–132. [1150]
- Rubio-Ramirez, Juan F., Daniel F. Waggoner, and Tao Zha (2010), “Structural vector autoregressions: Theory of identification and algorithms for inference.” *The Review of Economic Studies*, 77 (2), 665–696. [1161, 1162]
- Schorfheide, Frank and Dongho Song (2015), “Real-time forecasting with a mixed-frequency VAR.” *Journal of Business and Economic Statistics*, 33 (3), 366–380. [1145, 1148]
- Sims, Christopher A. and Tao Zha (1998), “Bayesian methods for dynamic multivariate models.” *International Economic Review*, 39 (4), 949–968. [1151, 1153]
- Zellner, Arnold (1971), *An Introduction to Bayesian Inference in Econometrics*. Wiley, New York. [1147]

---

Co-editor Tao Zha handled this manuscript.

Manuscript received 3 July, 2019; final version accepted 30 October, 2021; available online 3 December, 2021.