

Samahita, Margaret; Devereux, Kevin

Working Paper

Are economics conferences gender-neutral? Evidence from Ireland

UCD Centre for Economic Research Working Paper Series, No. WP22/25

Provided in Cooperation with:

UCD School of Economics, University College Dublin (UCD)

Suggested Citation: Samahita, Margaret; Devereux, Kevin (2022) : Are economics conferences gender-neutral? Evidence from Ireland, UCD Centre for Economic Research Working Paper Series, No. WP22/25, University College Dublin, UCD School of Economics, Dublin

This Version is available at:

<https://hdl.handle.net/10419/296671>

Standard-Nutzungsbedingungen:

Die Dokumente auf EconStor dürfen zu eigenen wissenschaftlichen Zwecken und zum Privatgebrauch gespeichert und kopiert werden.

Sie dürfen die Dokumente nicht für öffentliche oder kommerzielle Zwecke vervielfältigen, öffentlich ausstellen, öffentlich zugänglich machen, vertreiben oder anderweitig nutzen.

Sofern die Verfasser die Dokumente unter Open-Content-Lizenzen (insbesondere CC-Lizenzen) zur Verfügung gestellt haben sollten, gelten abweichend von diesen Nutzungsbedingungen die in der dort genannten Lizenz gewährten Nutzungsrechte.

Terms of use:

Documents in EconStor may be saved and copied for your personal and scholarly purposes.

You are not to copy documents for public or commercial purposes, to exhibit the documents publicly, to make them publicly available on the internet, or to distribute or otherwise use the documents in public.

If the documents have been made available under an Open Content Licence (especially Creative Commons Licences), you may exercise further usage rights as specified in the indicated licence.

UCD CENTRE FOR ECONOMIC RESEARCH

WORKING PAPER SERIES

2022

**Are economics conferences gender-neutral?
Evidence from Ireland**

Margaret Samahita

University College Dublin

Kevin Devereux

Peking University, China

WP22/25

October 2022

**UCD SCHOOL OF ECONOMICS
UNIVERSITY COLLEGE DUBLIN
BELFIELD
DUBLIN 4**

Are economics conferences gender-neutral?

Evidence from Ireland*

Margaret Samahita[†]

Kevin Devereux[‡]

October 11, 2022

Abstract

We study gender inequality in conference acceptance using data from the Irish Economic Association annual conference from 2016 to 2022, exploiting the introduction of anonymised submission in 2021 to study the effect of blinding. While no gender gap is observed in the organisers' acceptance decisions, there is an indication of in-group gender bias at the reviewer stage. In particular, male reviewers persistently give higher scores to male-authored papers. Evidence suggests that the bias stems from unconscious stereotyping against lesser-known female authors. Anonymisation eliminates the in-group bias of male reviewers, but introduces a bias in favour of male authors for female reviewers.

JEL codes: A1, D83, J16, J71

Keywords: academic conference, discrimination, gender

*We thank Míde Griffin and Jingran Wang for excellent research assistance and the Irish Economic Association conference organisers 2016-2022 for generously sharing their submissions data. We also thank Darragh Clancy, Orla Doyle, Anna Dreber-Almenberg, Helena Fornwagner, Brendan Kennelly, Tara McIndoe-Calder, Noemi Peter and seminar participants at University College Dublin, NUI Galway, the Central Bank of Ireland, the Irish Economic Association annual conference and the EEA Congress for helpful comments. This work was supported by the Irish Economic Association and the Irish Society for Women in Economics.

[†]School of Economics and Geary Institute for Public Policy, University College Dublin. E-mail: margaret.samahita@ucd.ie

[‡]School of Economics, Peking University, China. E-mail: kevin.devereux@pku.edu.cn

1 Introduction

Economists are increasingly interested in studying the gender disparity in their profession in an effort to improve gender equality. Papers have documented a gender gap in research output, which is partly explained by differences in collaboration networks (Ductor et al., forth.), invitations to present at seminars (Doleac et al., 2021) and treatment during these seminars (Dupas et al., 2021), teaching evaluations (Mengel et al., 2019; Boring, 2017; Boring and Philippe, 2021), recognition for group work (Sarsons et al., 2021), citations (Koffi, 2021a), the publication process (Card et al., 2020; Hengel and Moon, 2020; Hengel, forth.), as well as evaluations by other economists in an online professional forum (Wu, 2020) and reference letters (Eberhardt et al., 2022; Baltrunaite et al., 2022)—all of which may contribute to the underrepresentation of females in economics, especially at the top of the profession (Bayer and Rouse, 2016; Ginther and Kahn, 2021; Lundberg and Stearns, 2019).

In this paper, we focus on acceptance into an academic conference to study whether, and at which stage of the review process, gender bias is detected. Acceptance to conferences is an important input in the researcher production function as it allows researchers to disseminate their work to a larger audience and may help with the publication process. In previous findings, Chari and Goldsmith-Pinkham (2017) find no gender disparity in NBER conferences, while Hospido and Sanz (2021) find bias against female authors in three European economic conferences: the Annual Congress of the European Economic Association (2015–17), the Annual Meeting of the Spanish Economic Association (2012–17) and the Spring Meeting of Young Economists (2018). We contribute new evidence from Ireland using a novel dataset of all submissions to the Irish Economic Association (IEA) annual conference from 2016 to 2022. We complement this with additional data on all authors' PhD year to proxy for experience.

Across the six years studied (excluding 2020 when the conference was cancelled), around 61% of papers are accepted. Each submission is sent to one reviewer who assigns an acceptance score (1-5) and rates the paper in four components of quality (technical

merit, readability, originality, and, from 2017 onward, relevance—collectively referred to as *component scores*). Reviewers also asked to state their level of confidence in the area (1-5) from 2017 onward. While reviewers do not make the acceptance decisions, these scores are communicated to the conference organizers who take the information into account but may exercise discretion in their final decision, for example to achieve a balance in gender, institutions represented or some other dimension.

Prior to 2021, submissions were not blind; organisers and reviewers could infer the gender of the author(s) from their name(s), thus enabling us to study whether organisers have different likelihoods of accepting male- and female-authored papers, and if reviewers assign acceptance and component scores differently. Our data reveals that (local) conference organisers are gender-neutral: the proportion of male authors on a paper does not significantly affect the likelihood of acceptance. Similarly, the acceptance scores given by reviewers, which may influence organisers' decisions, are not significantly different for an increasing share of male co-authors on the paper. Hence, overall, organisers are successful in achieving gender balance at the conferences.

Since the above finding is based on analyses aggregating all reviewers, we next test for heterogeneity by gender given that one of the suggested explanations for gender bias in conference acceptance is male reviewers' stereotype against female authors ([Hospido and Sanz, 2021](#)). We find consistently sizeable effects indicating that reviewers indeed display an in-group gender bias: female(male) reviewers give higher acceptance scores to papers submitted by a higher share of female(male) authors. However, a large part of this bias is explained by the component scores. While these scores are intended to reflect the paper's quality along different dimensions, they may also be subject to gender bias. We therefore proceed by using component scores as an outcome variable. While we do not observe a gender gap in the scores assigned by female reviewers, we find that male reviewers consistently give lower scores to female-authored papers.

To explore the possibility that the gender bias is due to an information asymmetry driven by less well-known authors, we study several indicators for being well-known: having a higher share of authors who are based at an Irish institution (or one with an

active working paper series which proxies for a larger Irish institution), who have a PhD, with a Professor title, and the total number of years post-PhD for all authors. The results are consistent with the information asymmetry explanation: where the authors are less well-known, male reviewers display a bias in favour of an increasing share of male authors—this bias is reduced with an increase in familiarity. No such bias is observed for female reviewers.

Finally, we check whether reviewers' *perception* of information asymmetry can help explain the gender gap by male reviewers. We do not observe that reviewers are more confident when evaluating male-authored papers. Neither is reviewer confidence associated with a smaller gender gap for male reviewers. Hence, the observed gender gap appears to stem from unconsciously implementing a stereotype against female-authored papers who are less well-known.

In 2021, the organisers moved to a blind submission process, thus allowing us to study whether the above gender gap persists despite anonymisation. While, as expected, male reviewers' gender bias disappears, for female reviewers the blinding surprisingly *introduces* a male author bias that is greater than their initial in-group bias. As a result, blinded papers are scored higher by female reviewers when there is an increasing share of male authors. This may suggest that female referees turn to paper characteristics that correlate with a higher share of male authors. While we hesitate to speculate further given the relatively small number of observations driving the bias, we note that this additional bias is not sufficient to affect acceptance rates.

Our finding of no *aggregate* gender gap in acceptance contrasts with [Hospido and Sanz \(2021\)](#), the closest paper to ours, which finds a bias against female-authored papers despite a similar share of male reviewers (76% vs our 79%). This may reflect the organisers' conscious decision to ensure gender neutrality. Our mixed findings on the impact of blinding on gender discrimination contrast with other studies. Some have found that blinding reduces discrimination ([Goldin and Rouse, 2000](#); [Ross et al., 2006](#); [Åslund and Skans, 2012](#); [Tomkins et al., 2017](#); [Huber et al., 2022](#)) or that it has no effect in the context of an environmental economics conference ([Carlsson et al., 2012](#)). Other findings suggest

that when submissions are blinded, those reviewers who would like to favour females can no longer do so (Krause et al., 2012a,b; Behaghel et al., 2015)—or in other words, when submissions are *not* blinded reviewers make an effort to reduce their bias.

The remainder of the paper proceeds as follows. Section 2 provides some background about the conferences and describes the data. We present results in Section 3 and Section 4 concludes.

2 Background and Data

The IEA Annual Conference is the main event of the Irish Economic Association and takes place in May at different institutions around Ireland.¹ The responsibility of conference organisation is rotated each year among all institutional members of the IEA. In addition to contributed sessions, the conference features two international plenary lectures. Both national and international economists can submit papers for presentation, a subset of which are selected to be included in the conference’s program.² Selection is made by a team of reviewers which consists of around fifty economists from Irish institutions, the board members of the IEA and the conference organisers. Each paper is allocated to one reviewer according to field of research, and each reviewer reviews on average three papers per conference—although the local organisers typically review more. Between 2016-2022, the average yearly number of submissions is 150 and around 61% are accepted.

We accessed each year’s submissions data from the local organisers who use a centralised submission process called Ex Ordo. Combined, there are 902 observations, each of which represents a single submission of a paper. The dataset includes the submission details input by the submitter: paper title and abstract, primary field,³ secondary field

¹The 2020 conference was cancelled due to COVID-19. The local organisers thus moved the event to be held virtually in 2021. In 2022 the conference was back to an in-person format.

²In 2016-2018, there were a number of special sessions. Dropping the 24 papers accepted as part of these sessions yields similar results.

³Agricultural and natural resource economics; Economic development and growth; Economic history; Economic systems; Energy economics; Financial economics; Health, education, and welfare economics; History of economic thought; Household finance and consumption; Industrial organisation; International economics; Labour/demographic economics; Macroeconomics; Microeconomics; Public economics; Re-

(optional), whether the submission is a student paper, and the submitter details: title, full name, email, institution, country, for the submitter and all other co-authors. The dataset also includes the reviewer assigned to each paper, their score between 1 (unacceptable) to 5 (excellent) for the paper's technical merit, readability, originality and relevance to the conference, and their confidence within the subject area (1-5).⁴ The reviewer also gives the paper an overall acceptance score (1-5) with a short comment to the organisers. A higher score increases the likelihood of acceptance, a decision that is made by the organisers and which we also observe in the data. The gender of each submitting author and reviewer was coded manually by a research assistant and double-checked by us manually.⁵ We also cross-checked the submitter gender with the title stated when submitting (Mr, Mrs or Ms) if available. Additionally, the gender of all other co-authors was coded manually and cross-checked with their title if available.

The final decision of whether to accept or reject the paper is made by the conference organisers, however reviewers are highly influential with the likelihood of acceptance increasing with reviewers' scores from 0% (reviewer score of 1), 7% (2), 28% (3), 68% (4), and 90% (5). Organisers exercise some discretion in order to ensure an even balance among the different institutions and may reject a paper with a high score when the submitter has submitted multiple papers.

We complement the conference dataset with additional data on researcher experience. We conducted a manual search of the submitter and all co-authors using personal and institutional webpages, CVs and LinkedIn profiles to collect data on whether they have a PhD and the PhD graduation year. We cross-checked this information with the stated title at submission (Dr or Prof), which we use to assign the PhD dummy in case of missing data. We also collected data on paper quality: total number of citations as of December 2021 (2022 papers are coded 0) and whether or not the paper is published as of June 2022.

gional/real estate/transport economics and Teaching economics.

⁴Reviewer score for the paper's relevance and their confidence are only available from 2017 onwards. Reviewer scores are missing for 47 submissions in 2022 where scores are not recorded, these were last minute reviews done offline by the organisers and colleagues due to assigned reviewers not submitting their reviews on time.

⁵Gender data is missing for five reviewers who wish to remain anonymous.

Up until 2019, submissions were not blind: reviewers were able to see the name, and thus infer the gender, of each submitter and any co-author(s). In 2021 and 2022 the IEA implemented a blind submission system whereby the submission platform concealed the author names from the reviewer. However, reviewers who are also the conference organisers could still see the names of all authors—such submissions are thus coded as unblinded, along with all submissions from 2016-2019.⁶

3 Results

3.1 Is paper acceptance into the conference gender-balanced?

We first present summary statistics on the characteristics of authors, papers and reviewers in Table 1. Around 70% of submitters are male and the same proportion have a PhD. Around 10% are Professors, 60% are affiliated with an Irish institution and 40% at an Irish institution with an active working paper (WP) series, which proxy for relatively larger institutions in Ireland.⁷ When looking at the share of authors on a paper, the proportions are similar for males and PhDs, but a higher share of authors are Professors (over 15%) and fewer are affiliated with an Irish Institution (just over 50%, or around 35% at an Irish institution with a WP).

The sample of authors who submitted in the blinded and unblinded years are different. Those submitting in the blinded years appear to be more experienced with the submitter having almost 9 years post-PhD vs 6 in the unblinded case. The total experience of all authors on the average paper, obtained by summing years post-PhD for all authors, is also higher for the blinded case (16 vs 12) and there are more authors on the average paper (2.2 vs 2.0).

Papers tend to score just under 4 (on the five-point scale) in all dimensions. The

⁶We also code as unblinded the 17% of submissions in 2021 where the authors did not remove their names from the pdf submitted. Results are qualitatively similar when dropping all unblinded observations from 2021 and 2022.

⁷The five institutions are the Central Bank of Ireland, the Economic and Social Research Institute, Maynooth University, Trinity College Dublin and University College Dublin.

Table 1: Summary statistics

Variable	Unblinded		Blinded		Difference		
	Mean	SD	Mean	SD	Diff	SE	N
Submitter male	0.713	(0.453)	0.675	(0.469)	-0.038	(0.037)	902
Submitter PhD	0.723	(0.448)	0.716	(0.452)	-0.007	(0.036)	902
Submitter years post-PhD	5.605	(8.147)	8.968	(8.094)	3.363***	(0.806)	679
Submitter Professor	0.100	(0.301)	0.108	(0.311)	0.008	(0.025)	902
Submitter at Irish inst	0.593	(0.492)	0.619	(0.487)	0.025	(0.040)	902
Submitter at WP inst	0.410	(0.492)	0.392	(0.489)	-0.018	(0.040)	902
Number of authors on paper	1.963	(1.068)	2.227	(1.230)	0.264***	(0.090)	902
Share of authors male	0.731	(0.361)	0.690	(0.377)	-0.041	(0.030)	902
Share of authors PhD	0.738	(0.386)	0.759	(0.358)	0.022	(0.031)	902
All authors years post-PhD	12.391	(15.543)	15.763	(15.791)	3.372***	(1.264)	902
Share of authors Professor	0.150	(0.277)	0.186	(0.282)	0.036	(0.023)	902
Share of authors at Irish inst	0.528	(0.455)	0.542	(0.446)	0.013	(0.037)	902
Share of authors at WP inst	0.363	(0.435)	0.346	(0.438)	-0.017	(0.035)	902
Student paper	0.219	(0.414)	0.237	(0.426)	0.018	(0.034)	902
Score: Technical merit	3.717	(0.919)	3.743	(0.934)	0.026	(0.077)	855
Score: Readability	3.772	(0.920)	3.902	(0.915)	0.129*	(0.077)	855
Score: Originality	3.534	(0.905)	3.541	(0.912)	0.007	(0.076)	855
Score: Relevance	3.811	(0.997)	3.956	(0.895)	0.145*	(0.084)	701
Score: Acceptance	3.859	(1.151)	3.918	(1.153)	0.059	(0.096)	855
Reviewer confidence	3.770	(0.848)	3.776	(0.811)	0.006	(0.072)	701
Reviewer male	0.812	(0.391)	0.691	(0.463)	-0.122***	(0.033)	897
Paper accepted	0.578	(0.494)	0.722	(0.449)	0.144***	(0.039)	902
Citation	6.432	(18.847)	0.392	(1.465)	-6.040***	(1.355)	902
Published	0.315	(0.465)	0.057	(0.232)	-0.258***	(0.035)	902
Observations	708		194		902		

Notes: Summary statistics of submissions.

proportion of male reviewers is significantly higher for unblinded papers than blinded papers (81% vs 69%) and the overall acceptance rate is also significantly higher for blinded papers (72% vs 68%). This is driven by the 2021 conference which was held online due to COVID-19, meaning that it was able to accommodate more presentations than offline (78% acceptance rate). At the same time, possibly due to academics' difficulty in juggling commitments during the pandemic, the total number of submissions (132, 29% by females) was lower than in previous years.⁸ Papers post-blinding unsurprisingly have a lower citation count and a lower likelihood of publication.

Figure 1 displays the trend in paper submissions and acceptances by submitter gender. While the majority of papers, between 66-76%, are submitted by males each year, the acceptance rates of male and female submitters are similar (60% vs 60%, two-sample test of proportion, $p = 0.5396$) and in no year is the difference statistically significant. While the final decision to accept or reject a paper by the conference organisers appears to be gender-neutral, this decision may involve some discretion to achieve gender balance in the conference. Hence, we next look at the acceptance scores assigned by reviewers. As shown in Figure 2, male and female submitters receive similar acceptance scores from reviewers (3.871 vs 3.873, t-test, $p = 0.9834$) and in no year is the difference statistically significant (two-sample t-tests).

We explore other dimensions of diversity such as the field each submission falls into. Figure 3 shows the acceptance rate for various fields and the corresponding number of submissions. Excluding extremely small fields with fewer than 10 submissions, the acceptance rate varies from 39% (Agriculture and natural resource economics) to 75% (Economic history). Figure 4 plots the average acceptance scores for male and female submitters by their paper's primary field, sorted in order of increasing share of male reviewers. Although all fields have a majority of male reviewers, there is no clear trend showing that the gender share of reviewers in a particular field affects the acceptance

⁸Consistent with the narrative that the pandemic had a disproportionately negative effect on junior female researchers, the female submitters in 2021 were more experienced than in previous years, as measured by the number of years post PhD (8.12 vs 4.14, t-test, $p = 0.0094$) and the proportion who are Professors (10.5% vs 4.9%, two-sample test of proportion, $p = 0.1780$).

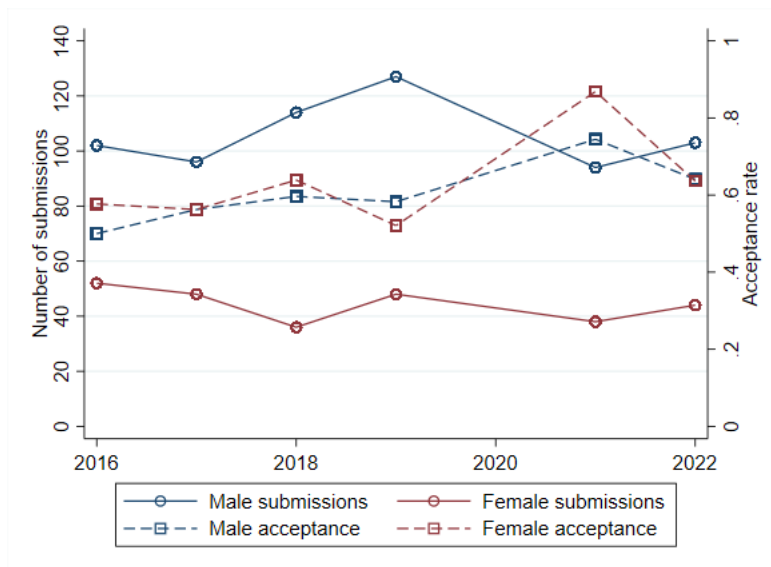


Figure 1: Trends in paper submission and acceptance by submitter gender

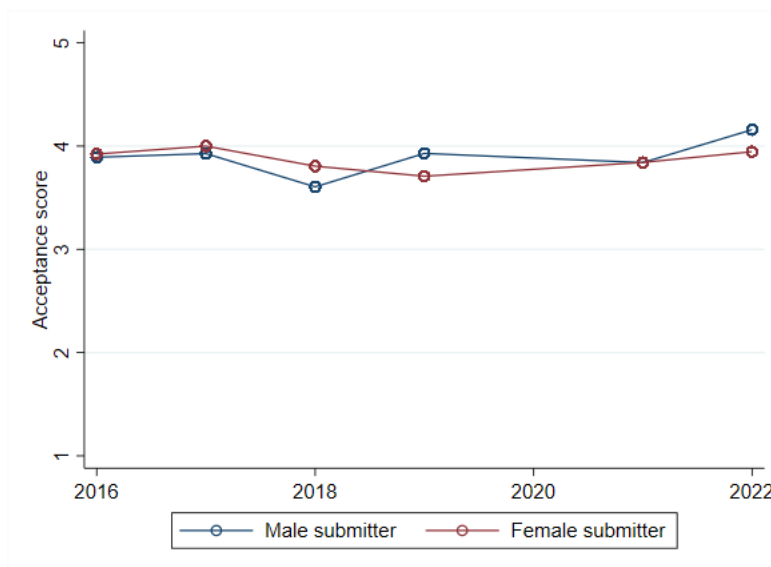


Figure 2: Paper acceptance score by submitter gender

scores given to male and female submitters differently.

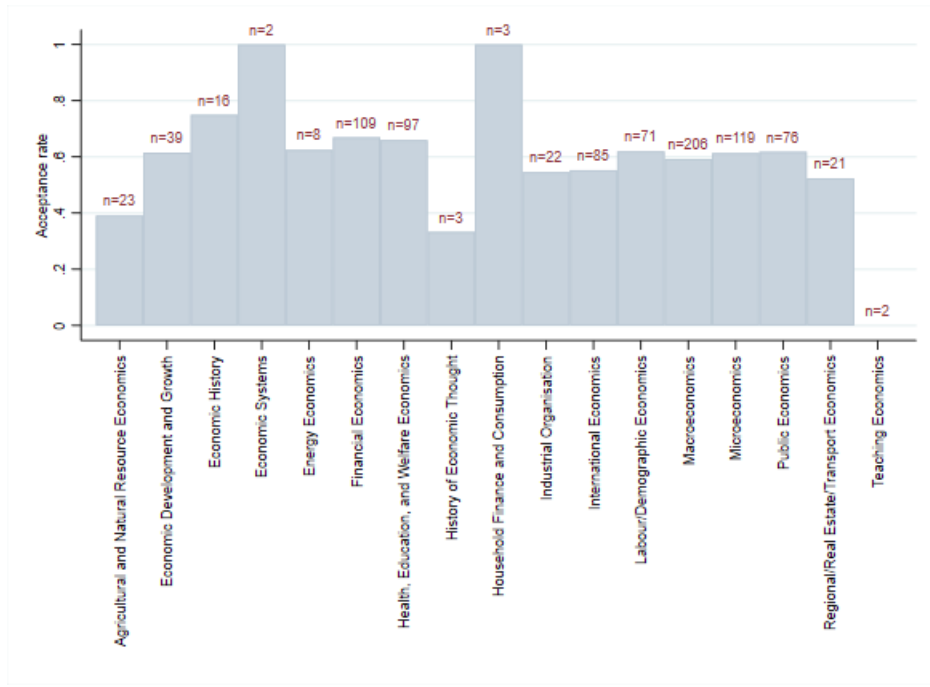


Figure 3: Paper acceptance by primary field

Acceptance rates are higher for a non-student paper relative to a student paper (64% vs 48%, $p < 0.0001$), submitters with a PhD than without (63% vs 54%, $p = 0.0107$), submitters with a Professor title than without (74% vs 59%, $p = 0.0068$) and submitters from an Irish vs non-Irish institution (75% vs 40%, $p < 0.0001$). For submitters from an Irish institution, the acceptance rate is higher for institutions with an active WP series than without (81% vs 63%, $p < 0.0001$).

To support our finding of no gender gap in acceptance, we proceed by considering the following linear probability model:

$$Accept_{iy} = \beta_1 ProportionMale_{iy} + \alpha_y + \varepsilon_{iy} \quad (1)$$

where $Accept$ is a dummy variable which equals 1 if submission i in year y is accepted into the conference. We also use each paper's acceptance (1-5) as determined by the



Figure 4: Paper acceptance score by gender and primary field in increasing share of male reviewers

reviewer as an alternative outcome variable.⁹ *ProportionMale* is a continuous variable between 0 and 1 indicating the share of male authors on the paper. α_y is year fixed effects, ε_{iy} is an error term, and β_1 is the parameter of interest. The unit of observation is an individual submission.

We also investigate whether blinding has any effect on paper acceptance by testing the following model:

$$\begin{aligned}
 Accept_{iy} = & \beta_1 ProportionMale_{iy} + \beta_2 Blinded_{iy} + \beta_3 ProportionMale \times Blinded_{iy} \\
 & + \alpha_y + \varepsilon_{iy}
 \end{aligned} \tag{2}$$

Blinded is a dummy variable which equals 1 if the author names are blinded on the paper (this applies to all submissions in 2021-2022 reviewed by someone other than the conference organisers). The parameter of interest is $\beta_1 + \beta_3$ which indicate the extent of

⁹Results are robust to logit and ordered logit specifications, respectively.

any gender bias despite blinding. In additional specifications we also include field fixed effects; a set of controls (including the number of authors on the paper, the proportion of authors with a PhD, the proportion of authors affiliated with an Irish institution and the proportion of authors affiliated with an Irish institution with WP); reviewer scores on the paper's technical merit, readability, originality, and relevance (2017 onward); and reviewer fixed effects. In a final specification we include ex-post measures of quality including citations and a dummy for publication, however given the publication lag and potential bias in the publication process and citations (Card et al., 2020; Hengel and Moon, 2020; Hengel, forth.; Koffi, 2021a,b), we only consider this specification as a robustness check.

The results of model (1) are in columns (1) and (8) of Table 2, showing no significant effect of gender on the likelihood of acceptance nor on the reviewers' acceptance scores. These confirm the above descriptive analyses whereby organisers and reviewers do not appear to discriminate between male and female submitting authors.

Given the null effect of gender on organisers' acceptance decision, it is unsurprising that blinding also has no effect as shown in columns (2-7). However, when considering reviewers' acceptance scores, blinding is associated with around 0.5 higher scores (on a scale from 1-5) given to male authors, though the effect disappears once we control for the paper component scores (technical merit, readability, originality and relevance).

To sum up, we find no gender difference in the likelihood of paper acceptance into the conference or in reviewers' acceptance scores.

Result 1. *The likelihood of paper acceptance does not vary in the share of male authors.*

Our finding contrasts with Hospido and Sanz (2021) who find that, even after including a range of controls, a 1 percentage point (pp) increase in the share of male authors leads to a 0.054 pp increase in the probability of paper acceptance in three European economic conferences. Their suggested explanation is a stereotype against female authors driven by male referees against lesser-known authors. Therefore, in the following, we examine whether such dynamics are present in our setting by focusing on the gender effect for male and female reviewers separately, which may be masked in the pooled analyses above.

Table 2: Paper acceptance

	Likelihood of acceptance							Reviewers' acceptance score						
	(1)	(2)	(3)	(4)	(5)	(6)	(7)	(8)	(9)	(10)	(11)	(12)	(13)	(14)
Proportion male	0.004 (0.045)	-0.002 (0.053)	0.010 (0.054)	0.051 (0.046)	-0.005 (0.044)	-0.000 (0.049)	0.005 (0.050)	0.129 (0.105)	0.037 (0.120)	0.098 (0.120)	0.148 (0.113)	-0.087 (0.065)	-0.071 (0.065)	-0.070 (0.065)
Blinded		0.036 (0.093)	0.053 (0.093)	0.069 (0.086)	0.051 (0.079)	-0.001 (0.098)	0.007 (0.098)		-0.529** (0.256)	-0.482* (0.262)	-0.329 (0.252)	-0.117 (0.136)	-0.168 (0.163)	-0.164 (0.164)
Prop male x Blinded		0.035 (0.100)	0.031 (0.100)	0.030 (0.093)	-0.022 (0.084)	0.003 (0.095)	-0.006 (0.096)		0.398 (0.247)	0.376 (0.247)	0.349 (0.236)	0.161 (0.130)	0.187 (0.140)	0.183 (0.141)
TE: $\beta_1 + \beta_3$		0.033 (0.085)	0.042 (0.085)	0.081 (0.081)	-0.027 (0.073)	0.002 (0.083)	-0.001 (0.084)		0.435** (0.216)	0.474** (0.214)	0.497** (0.207)	0.074 (0.115)	0.116 (0.126)	0.113 (0.127)
N	902	902	902	902	701	701	701	855	855	855	855	701	701	701
Adj. R-sq	0.020	0.019	0.021	0.194	0.483	0.480	0.482	0.006	0.008	0.036	0.102	0.770	0.806	0.805
Year FE	X	X	X	X	X	X	X	X	X	X	X	X	X	X
Field FE			X	X	X	X	X			X	X	X	X	X
Controls				X	X	X	X				X	X	X	X
Scores					X	X	X					X	X	X
Reviewer FE						X	X						X	X
Quality							X							X

Notes: OLS regressions of paper acceptance (columns 1-7) and reviewers' acceptance scores (columns 8-14). Controls include number of authors on paper, proportion of authors with PhD, proportion of authors affiliated with an Irish institution and proportion of authors affiliated with an Irish institution with WP. Scores include the reviewer's assessment of the paper's technical merit, readability, originality, and relevance (2017 onward). Quality controls for number of citations as of December 2021 and a dummy for publication as of June 2022. * $p < 0.10$, ** $p < 0.05$, *** $p < 0.01$.

3.2 Does the reviewer gender matter?

We first present evidence in Figure 5 showing that, when separated by gender, reviewers give similar acceptance scores to male and female submitters. No difference is detected for male reviewers' scores for male vs female submitters (3.86 vs 3.83, t-test, $p = 0.7366$), neither do we detect a difference for female reviewers' scores for male vs female submitters (3.87 vs 4.00, t-test, $p = 0.4310$).

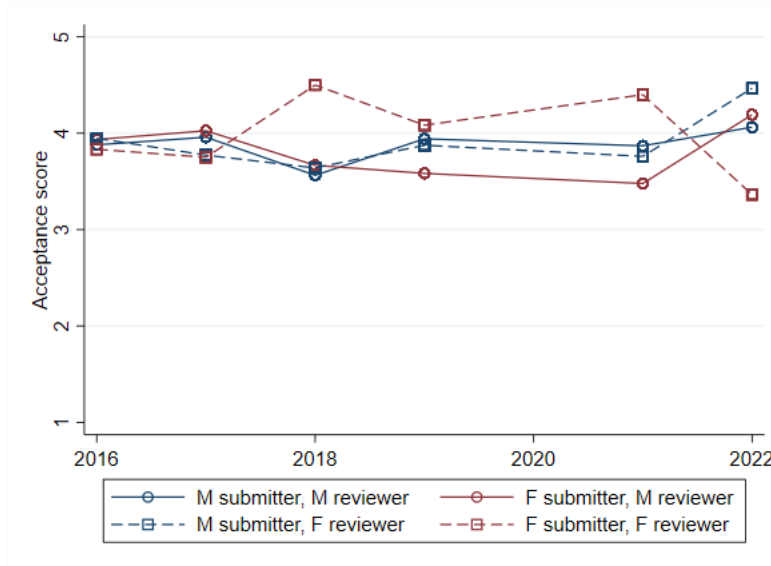


Figure 5: Paper acceptance score by submitter and reviewer gender

We next plot reviewers' scores for each paper's technical merit, readability, originality and relevance in Figure 6. Aside from paper relevance, in which female reviewers give higher scores to female submitters (4.02 vs 3.75, t-test, $p = 0.0916$), no significant difference is detected for either male or female reviewers' individual component scores, when scoring male vs female submitters.

To further explore the role of the reviewer's gender in acceptance decisions controlling for other characteristics, and the effect of blinding, we test the previous specifications for male and female reviewers separately. The results are shown in Table 3. Male reviewers do not display significant gender bias when author names are observed—while all-male-authored papers get around 0.25 extra points, the effect disappears when controlling for

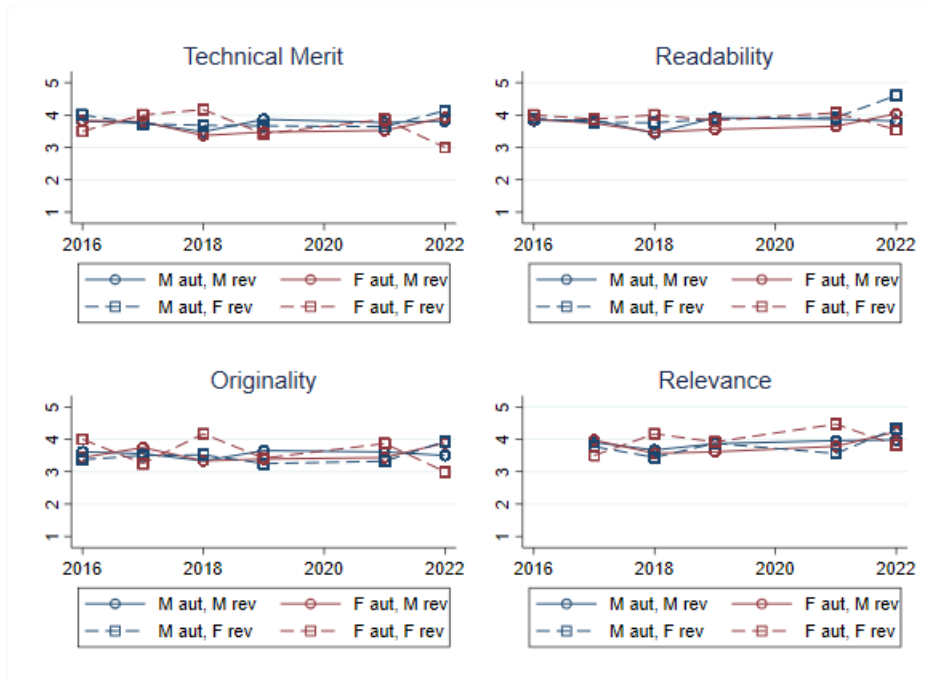


Figure 6: Paper score components by submitter and reviewer gender

paper component scores. Blinding has no significant effect on the gender gap. On the contrary, female reviewers appear to consistently favour female authors when names are observed. Surprisingly, blinding *introduces* a male-author bias greater than the initial in-group bias—in column (11), going from a paper with all female authors to one with all male authors, scores are higher by almost a whole number—though the effect again disappears when controlling for paper component scores.

Since it appears that paper component scores explain a significant part of the gender gap exhibited by reviewers, we repeat the above analyses using the average scores out of the paper’s technical merit, readability, originality, and relevance as an outcome variable. The results are shown in Table 4. Without blinding, male reviewers appear to display significant in-group gender bias, giving an all-male-authored paper around 0.2 extra points relative to an all-female-authored paper. While the coefficients for female reviewers also indicate in-group gender bias, with higher scores given to female-authored papers, these coefficients are statistically insignificant.

Does blinding remove these in-group gender biases? When names are unobserved,

Table 3: Paper acceptance scores

	Male reviewers							Female reviewers						
	(1)	(2)	(3)	(4)	(5)	(6)	(7)	(8)	(9)	(10)	(11)	(12)	(13)	(14)
Proportion male	0.212* (0.124)	0.169 (0.138)	0.210 (0.140)	0.246* (0.132)	-0.034 (0.078)	-0.025 (0.081)	-0.023 (0.081)	-0.147 (0.192)	-0.476* (0.243)	-0.394* (0.225)	-0.428* (0.225)	-0.301** (0.131)	-0.284** (0.134)	-0.307** (0.138)
Blinded		-0.677** (0.293)	-0.643** (0.309)	-0.394 (0.300)	-0.193 (0.152)	-0.318* (0.185)	-0.309* (0.187)		-0.118 (0.545)	0.109 (0.510)	-0.116 (0.499)	0.130 (0.300)	0.041 (0.354)	0.035 (0.352)
Prop male x Blinded		0.192 (0.306)	0.189 (0.306)	0.111 (0.289)	0.148 (0.148)	0.181 (0.166)	0.174 (0.168)		1.120*** (0.394)	1.166*** (0.373)	1.353*** (0.424)	0.313 (0.274)	0.419 (0.279)	0.434 (0.280)
TE: $\beta_1 + \beta_3$		0.361 (0.274)	0.399 (0.273)	0.357 (0.261)	0.113 (0.132)	0.156 (0.151)	0.151 (0.152)		0.644** (0.311)	0.772*** (0.284)	0.925*** (0.335)	0.012 (0.223)	0.135 (0.237)	0.127 (0.240)
N	662	662	662	662	533	533	533	188	188	188	188	163	163	163
Adj. R-sq	0.012	0.018	0.047	0.109	0.777	0.810	0.809	-0.023	0.017	0.083	0.126	0.762	0.803	0.800
Year FE	X	X	X	X	X	X	X	X	X	X	X	X	X	X
Field FE			X	X	X	X	X			X	X	X	X	X
Controls				X	X	X	X				X	X	X	X
Scores					X	X	X					X	X	X
Reviewer FE						X	X						X	X
Quality							X							X

Notes: OLS regressions of paper acceptance scores. Controls include number of authors on paper, proportion of authors with PhD, proportion of authors affiliated with an Irish institution and proportion of authors affiliated with an Irish institution with WP. Scores include the reviewer's assessment of the paper's technical merit, readability, originality, and relevance (2017 onward). Quality controls for number of citations as of December 2021 and a dummy for publication as of June 2022. * $p < 0.10$, ** $p < 0.05$, *** $p < 0.01$.

Table 4: Paper component scores

	Male reviewers						Female reviewers					
	(1)	(2)	(3)	(4)	(5)	(6)	(7)	(8)	(9)	(10)	(11)	(12)
Proportion male	0.180** (0.085)	0.187* (0.096)	0.209** (0.098)	0.232** (0.093)	0.210** (0.096)	0.199** (0.095)	0.019 (0.139)	-0.198 (0.171)	-0.139 (0.169)	-0.128 (0.166)	-0.276 (0.171)	-0.330* (0.174)
Blinded		-0.261 (0.194)	-0.243 (0.206)	-0.086 (0.200)	-0.224 (0.223)	-0.216 (0.225)		-0.168 (0.315)	-0.067 (0.295)	-0.307 (0.305)	-0.218 (0.361)	-0.190 (0.364)
Prop male x Blinded		-0.042 (0.201)	-0.031 (0.202)	-0.079 (0.196)	-0.093 (0.186)	-0.095 (0.186)		0.735** (0.289)	0.789*** (0.279)	0.891*** (0.305)	1.029*** (0.278)	1.049*** (0.280)
TE: $\beta_1 + \beta_3$ SE		0.145 (0.177)	0.178 (0.177)	0.153 (0.174)	0.117 (0.159)	0.103 (0.160)		0.537** (0.233)	0.650*** (0.213)	0.763*** (0.241)	0.754*** (0.232)	0.719*** (0.229)
N	662	662	662	662	662	662	188	188	188	188	188	188
Adj. R-sq	0.021	0.023	0.070	0.118	0.215	0.218	-0.024	0.006	0.057	0.129	0.239	0.244
Year FE	X	X	X	X	X	X	X	X	X	X	X	X
Field FE			X	X	X	X			X	X	X	X
Controls				X	X	X				X	X	X
Reviewer FE					X	X					X	X
Quality						X						X

Notes: OLS regressions of paper component scores, the average of technical merit, readability, originality and relevance (2017 onward). Controls include number of authors on paper, proportion of authors with PhD, proportion of authors affiliated with an Irish institution and proportion of authors affiliated with an Irish institution with WP. Quality controls for number of citations as of December 2021 and a dummy for publication as of June 2022. * $p < 0.10$, ** $p < 0.05$, *** $p < 0.01$.

only paper quality should matter.¹⁰ For male reviewers, blinding appears to temper reviewers' male bias and the overall effect of the proportion of authors who are male is no longer significant. Surprisingly, as for acceptance scores above, for female reviewers blinding introduces a male-author bias. The effect size is substantial: going from an all-female-authored paper to an all-male-authored paper, the average component score increases by 0.75 (on a scale of 1-5). This result is driven by the 30 papers reviewed by female reviewers in 2022, their scores correlate strongly with the share of male authors on a paper ($\rho = 0.5691$, $p = 0.0024$). This correlation is not significant at the 5% level for male or female reviewers in any other year.

In Tables 5-8 we explore whether the above bias is driven by any one of the four paper components. Technical merit and readability appear to be the main components driving the results. Without blinding, male reviewers judge male-authored papers to be more readable and have more technical merit (though for the latter the gender bias is not significant once controlling for reviewer fixed effects), however blinding removes the significance of readability, while the gender effect on technical merit stands. For female reviewers, neither technical merit nor readability are increasing in male authors prior to blinding. However, when papers are blinded, a higher share of male authors is associated with a higher score in technical merit. The effect size is twice as big for papers reviewed by females than males. Female reviewers also give higher readability scores to male-authored papers subsequent to blinding.

We therefore summarise our second result:

Result 2. *There are indications of reviewers exhibiting in-group gender bias when determining a paper's acceptance and component scores with author names observable. While blinding removes the bias of male reviewers, it overturns the bias of female reviewers, causing them to favour male-authored papers.*

¹⁰Unless the reviewer already knows the paper, a possibility we explore below.

Table 5: Paper technical merit scores

	Male reviewers						Female reviewers					
	(1)	(2)	(3)	(4)	(5)	(6)	(7)	(8)	(9)	(10)	(11)	(12)
Proportion male	0.240** (0.103)	0.191* (0.114)	0.200* (0.115)	0.216** (0.109)	0.182 (0.115)	0.179 (0.115)	0.259 (0.169)	-0.050 (0.203)	-0.046 (0.216)	-0.032 (0.221)	-0.221 (0.223)	-0.280 (0.228)
Blinded		-0.379 (0.259)	-0.368 (0.264)	-0.219 (0.258)	-0.661** (0.311)	-0.654** (0.312)		-0.283 (0.378)	-0.276 (0.376)	-0.270 (0.378)	-0.393 (0.476)	-0.361 (0.481)
Prop male x Blinded		0.232 (0.263)	0.251 (0.263)	0.205 (0.256)	0.299 (0.257)	0.296 (0.258)		1.047*** (0.360)	1.188*** (0.357)	1.091*** (0.377)	1.319*** (0.387)	1.339*** (0.394)
TE: $\beta_1 + \beta_3$		0.423* (0.237)	0.451* (0.238)	0.421* (0.234)	0.480** (0.237)	0.474** (0.238)		0.997*** (0.297)	1.142*** (0.271)	1.059*** (0.285)	1.098*** (0.308)	1.059*** (0.308)
N	662	662	662	662	662	662	188	188	188	188	188	188
Adj. R-sq	0.019	0.019	0.065	0.092	0.152	0.149	-0.006	0.042	0.098	0.152	0.168	0.174
Year FE	X	X	X	X	X	X	X	X	X	X	X	X
Field FE			X	X	X	X			X	X	X	X
Controls				X	X	X				X	X	X
Reviewer FE					X	X					X	X
Quality						X						X

Notes: OLS regressions of technical merit scores. Controls include number of authors on paper, proportion of authors with PhD, proportion of authors affiliated with an Irish institution and proportion of authors affiliated with an Irish institution with WP. Quality controls for number of citations as of December 2021 and a dummy for publication as of June 2022. * $p < 0.10$, ** $p < 0.05$, *** $p < 0.01$.

Table 6: Paper readability scores

	Male reviewers						Female reviewers					
	(1)	(2)	(3)	(4)	(5)	(6)	(7)	(8)	(9)	(10)	(11)	(12)
Proportion male	0.207** (0.101)	0.246** (0.115)	0.250** (0.116)	0.278** (0.111)	0.246** (0.116)	0.237** (0.115)	0.095 (0.172)	-0.132 (0.207)	-0.121 (0.209)	-0.088 (0.189)	-0.252 (0.228)	-0.291 (0.240)
Blinded		-0.042 (0.224)	0.020 (0.236)	0.184 (0.234)	0.100 (0.315)	0.103 (0.315)		-0.294 (0.377)	-0.196 (0.384)	-0.560 (0.404)	-0.588 (0.485)	-0.570 (0.482)
Prop male x Blinded		-0.194 (0.242)	-0.148 (0.243)	-0.196 (0.236)	-0.176 (0.240)	-0.176 (0.241)		0.764** (0.363)	0.841** (0.354)	0.990** (0.380)	1.188*** (0.425)	1.202*** (0.430)
TE: $\beta_1 + \beta_3$ SE		0.052 (0.213)	0.102 (0.214)	0.081 (0.211)	0.071 (0.212)	0.062 (0.213)		0.632** (0.298)	0.720*** (0.276)	0.902*** (0.313)	0.936*** (0.358)	0.911** (0.356)
N	662	662	662	662	662	662	188	188	188	188	188	188
Adj. R-sq	0.024	0.023	0.058	0.097	0.174	0.173	-0.013	0.001	-0.006	0.050	0.148	0.143
Year FE	X	X	X	X	X	X	X	X	X	X	X	X
Field FE			X	X	X	X			X	X	X	X
Controls				X	X	X				X	X	X
Reviewer FE					X	X					X	X
Quality						X						X

Notes: OLS regressions of readability scores. Controls include number of authors on paper, proportion of authors with PhD, proportion of authors affiliated with an Irish institution and proportion of authors affiliated with an Irish institution with WP. Quality controls for number of citations as of December 2021 and a dummy for publication as of June 2022. * $p < 0.10$, ** $p < 0.05$, *** $p < 0.01$.

Table 7: Paper originality scores

	Male reviewers						Female reviewers					
	(1)	(2)	(3)	(4)	(5)	(6)	(7)	(8)	(9)	(10)	(11)	(12)
Proportion male	0.101 (0.096)	0.128 (0.107)	0.169 (0.109)	0.179* (0.105)	0.156 (0.107)	0.144 (0.107)	-0.121 (0.179)	-0.393* (0.215)	-0.261 (0.208)	-0.262 (0.217)	-0.334 (0.211)	-0.384* (0.216)
Blinded		-0.225 (0.237)	-0.242 (0.246)	-0.102 (0.240)	-0.222 (0.233)	-0.211 (0.232)		-0.471 (0.406)	-0.300 (0.343)	-0.520 (0.386)	0.104 (0.462)	0.131 (0.464)
Prop male x Blinded		-0.144 (0.235)	-0.127 (0.231)	-0.173 (0.226)	-0.243 (0.199)	-0.246 (0.198)		0.910** (0.384)	0.946** (0.370)	1.061** (0.408)	0.807** (0.384)	0.824** (0.382)
TE: $\beta_1 + \beta_3$		-0.016 (0.210)	0.042 (0.205)	0.006 (0.202)	-0.087 (0.166)	-0.102 (0.165)		0.518 (0.318)	0.685** (0.301)	0.799** (0.322)	0.473 (0.334)	0.441 (0.332)
N	662	662	662	662	662	662	188	188	188	188	188	188
Adj. R-sq	0.005	0.008	0.059	0.084	0.237	0.239	-0.017	0.001	0.071	0.095	0.255	0.253
Year FE	X	X	X	X	X	X	X	X	X	X	X	X
Field FE			X	X	X	X			X	X	X	X
Controls				X	X	X				X	X	X
Reviewer FE					X	X					X	X
Quality						X						X

Notes: OLS regressions of originality scores. Controls include number of authors on paper, proportion of authors with PhD, proportion of authors affiliated with an Irish institution and proportion of authors affiliated with an Irish institution with WP. Quality controls for number of citations as of December 2021 and a dummy for publication as of June 2022. * $p < 0.10$, ** $p < 0.05$, *** $p < 0.01$.

Table 8: Paper relevance scores

	Male reviewers						Female reviewers					
	(1)	(2)	(3)	(4)	(5)	(6)	(7)	(8)	(9)	(10)	(11)	(12)
Proportion male	0.195*	0.216	0.234*	0.271**	0.263*	0.254*	-0.116	-0.165	-0.061	-0.080	-0.163	-0.177
	(0.114)	(0.136)	(0.139)	(0.137)	(0.142)	(0.142)	(0.193)	(0.253)	(0.266)	(0.239)	(0.251)	(0.255)
Blinded		-0.374	-0.367	-0.209	-0.099	-0.065		0.413	0.576	0.111	0.227	0.290
		(0.231)	(0.255)	(0.251)	(0.285)	(0.287)		(0.409)	(0.398)	(0.406)	(0.501)	(0.503)
Prop male x Blinded		-0.094	-0.124	-0.160	-0.220	-0.233		0.166	0.105	0.402	0.810**	0.787**
		(0.244)	(0.252)	(0.251)	(0.237)	(0.237)		(0.380)	(0.380)	(0.410)	(0.387)	(0.383)
TE: $\beta_1 + \beta_3$		0.122	0.110	0.110	0.043	0.020		0.001	0.044	0.321	0.646*	0.611*
SE		(0.204)	(0.210)	(0.214)	(0.193)	(0.192)		(0.284)	(0.272)	(0.326)	(0.333)	(0.327)
N	533	533	533	533	533	533	163	163	163	163	163	163
Adj. R-sq	0.015	0.022	0.036	0.105	0.206	0.216	0.004	0.007	0.041	0.179	0.207	0.262
Year FE	X	X	X	X	X	X	X	X	X	X	X	X
Field FE			X	X	X	X			X	X	X	X
Controls				X	X	X				X	X	X
Reviewer FE					X	X					X	X
Quality						X						X

Notes: OLS regressions of relevance scores (2017 onward). Controls include number of authors on paper, proportion of authors with PhD, proportion of authors affiliated with an Irish institution and proportion of authors affiliated with an Irish institution with WP. Quality controls for number of citations as of December 2021 and a dummy for publication as of June 2022. * $p < 0.10$, ** $p < 0.05$, *** $p < 0.01$.

3.3 What drives gender bias?

Evidence in [Hospido and Sanz \(2021\)](#) suggest that bias favoring male authors may be due to a stereotype against female authors driven by a lack of information about the paper quality as judged from its content—as a result reviewers resort to other (potentially uninformative) signals when assigning scores, such as gender when author names are observable.

To explore whether information asymmetry/unfamiliarity associated with female authors drives reviewers' scoring bias in favour of males, we interact the gender dependent variable with other variables which may proxy for familiarity: the proportion of authors affiliated with an Irish institution, affiliated with an Irish institution with WP, with a PhD, who are Professors and all authors' total number of years post-PhD.

Consistent with the information asymmetry explanation in [Hospido and Sanz \(2021\)](#), male reviewers' bias is concentrated among papers with all authors from outside Ireland (see the first row of [Table 9](#)). The bias is reduced with an increasing share of Irish-affiliated authors, shown by the negative coefficients in the second row. Similar patterns are observed for the proportion of authors affiliated with an Irish institution with WP ([Table 10](#)), with a PhD ([Table 11](#)), with a Professor title ([Table 12](#)), and authors' total number of years post-PhD ([Table 13](#)). We do not observe these patterns for female reviewers, unsurprising given female reviewers do not display a bias when assigning component scores in the unblinded case.

In the case of a blinded submission, it is not possible to rely on gender-based stereotypes. As expected, male reviewers' bias against lesser-known female authors is no longer observed. However, it is surprising that the coefficient of Proportion male is consistently positive and sizeable for female reviewers, though not always significant, in [Tables 9-13](#)—indicating that for truly unfamiliar papers, an increasing share of male authors is associated with higher quality. Some indicators of familiarity, such as the proportion of authors at an Irish institution or an Irish institution with a WP, reduce the gender bias—the interaction coefficients, while statistically insignificant, are large

and negative. While these papers are blinded, having authors affiliated with an Irish institution increases the likelihood that the reviewer may recognise the paper or have seen it presented—perhaps in such cases female reviewers attempt to favour more female authors.¹¹ However, we hesitate to over-interpret these results since these are based on a much smaller number of observations (56).

Finally, we check whether reviewers' *perception* of information asymmetry can help explain the gender bias using data on reviewer confidence during the paper evaluation. Figure 7 plots the reviewer's confidence (1-5) in the subject area. Male reviewers appear to be more confident when evaluating an (unblinded) female submitter's paper than a male submitter's paper, but the difference is not significant (3.88 vs 3.73, t-test, $p = 0.1007$). A similar pattern is observed for female reviewers: they appear more confident when evaluating a female-authored paper though the difference is not significant (3.93 vs 3.71, t-test, $p = 0.2190$). However, higher confidence is not associated with lower gender gap, as shown in Table 14. In fact, when reviewers have zero confidence, the bias tends to favour the opposite gender. Hence, *perceived* lack of confidence is not the driver of the gender gap exhibited by male reviewers above, which instead appears to be driven by unconscious stereotyping.

Result 3. *Male reviewers exhibit a bias against lesser-known female authors when author names are observable. This bias appears to stem from unconscious stereotyping, rather than driven by a perceived lack of confidence during evaluation, and is removed by blinding.*

¹¹In April 2022 we conducted a survey of the 2021 reviewers (38% response rate). The responses reveal that around 29% of reviewers recognised, or could identify an author on, at least one of the blinded papers they reviewed. An additional 18% looked up the title of at least one of the papers they reviewed. While the sample is small, these results are in line with Blank (1991) who finds that, when reviewing blinded submissions, around 50% of referees believe they could identify the author(s) and 45% could indeed correctly identify the author(s) of the paper.

Table 9: Paper scores by share of male authors interacted with share of authors at Irish institution

	Male reviewers					Female reviewers				
	(1)	(2)	(3)	(4)	(5)	(6)	(7)	(8)	(9)	(10)
Unblinded										
Proportion male	0.241 (0.154)	0.289* (0.152)	0.272* (0.145)	0.312** (0.148)	0.299** (0.146)	-0.298 (0.254)	-0.262 (0.250)	-0.288 (0.234)	-0.243 (0.242)	-0.288 (0.253)
Prop male x Prop Irish	-0.044 (0.207)	-0.096 (0.206)	-0.036 (0.200)	-0.174 (0.205)	-0.171 (0.203)	0.226 (0.351)	0.191 (0.347)	0.312 (0.347)	-0.031 (0.376)	-0.048 (0.382)
Prop Irish	0.311* (0.166)	0.359** (0.166)	0.044 (0.196)	0.117 (0.203)	0.133 (0.202)	0.113 (0.298)	0.082 (0.305)	-0.220 (0.320)	-0.109 (0.349)	-0.165 (0.361)
N	535	535	535	535	535	132	132	132	132	132
Adj. R-sq	0.051	0.101	0.137	0.215	0.217	0.001	0.004	0.106	0.160	0.158
Blinded										
Proportion male	-0.041 (0.260)	-0.043 (0.282)	-0.088 (0.288)	0.443 (0.469)	0.631 (0.443)	0.803 (0.557)	1.295** (0.579)	1.034 (0.631)	0.911 (1.079)	0.655 (1.309)
Prop male x Prop Irish	0.334 (0.411)	0.362 (0.422)	0.402 (0.434)	-0.153 (0.718)	-0.325 (0.668)	-0.271 (0.619)	-0.736 (0.736)	-0.620 (0.744)	-0.858 (1.184)	-0.283 (1.468)
Prop Irish	0.036 (0.319)	0.081 (0.309)	0.054 (0.376)	0.479 (0.622)	0.749 (0.608)	0.434 (0.525)	0.511 (0.585)	0.205 (0.626)	0.286 (1.017)	0.669 (1.097)
N	127	127	127	127	127	56	56	56	56	56
Adj. R-sq	0.015	0.032	0.012	-0.033	0.026	0.036	0.220	0.255	-0.005	0.067
Year FE	X	X	X	X	X	X	X	X	X	X
Field FE		X	X	X	X		X	X	X	X
Controls			X	X	X			X	X	X
Reviewer FE				X	X				X	X
Quality					X					X

Notes: OLS regressions of paper component scores, the average of technical merit, readability, originality and relevance (2017 onward). Controls include number of authors on paper, proportion of authors with PhD, proportion of authors affiliated with an Irish institution and proportion of authors affiliated with an Irish institution with WP. Quality controls for number of citations as of December 2021 and a dummy for publication as of June 2022. * $p < 0.10$, ** $p < 0.05$, *** $p < 0.01$.

Table 10: Paper scores by share of male authors interacted with share of authors at Irish institution with WP

	Male reviewers					Female reviewers				
	(1)	(2)	(3)	(4)	(5)	(6)	(7)	(8)	(9)	(10)
Unblinded										
Proportion male	0.283** (0.136)	0.347** (0.136)	0.336** (0.132)	0.368*** (0.135)	0.361*** (0.133)	-0.236 (0.202)	-0.235 (0.196)	-0.199 (0.196)	-0.284 (0.209)	-0.324 (0.217)
Prop male x Prop WP inst	-0.082 (0.199)	-0.184 (0.193)	-0.194 (0.187)	-0.352* (0.193)	-0.366* (0.191)	0.074 (0.401)	0.134 (0.422)	0.205 (0.435)	0.119 (0.487)	0.070 (0.476)
Prop WP inst	0.454*** (0.158)	0.513*** (0.156)	0.504*** (0.177)	0.586*** (0.181)	0.577*** (0.179)	0.395 (0.350)	0.239 (0.394)	0.198 (0.417)	0.484 (0.456)	0.627 (0.467)
N	535	535	535	535	535	132	132	132	132	132
Adj. R-sq	0.074	0.121	0.139	0.218	0.221	0.026	0.016	0.101	0.161	0.158
Blinded										
Proportion male	0.324 (0.240)	0.315 (0.246)	0.287 (0.256)	0.518 (0.378)	0.659* (0.366)	0.737* (0.369)	0.982*** (0.334)	0.726* (0.422)	0.544 (0.849)	0.621 (0.943)
Prop male x Prop WP inst	-0.448 (0.373)	-0.354 (0.412)	-0.385 (0.434)	-0.374 (0.691)	-0.494 (0.655)	-0.406 (0.456)	-0.470 (0.452)	-0.294 (0.509)	-0.468 (1.088)	-0.353 (1.087)
Prop WP inst	0.491* (0.274)	0.475 (0.290)	0.290 (0.368)	0.114 (0.496)	0.069 (0.463)	0.632* (0.369)	0.457 (0.355)	0.598 (0.375)	0.754 (0.723)	0.074 (0.700)
N	127	127	127	127	127	56	56	56	56	56
Adj. R-sq	0.003	0.009	0.012	-0.028	0.033	0.076	0.220	0.243	-0.036	0.072
Year FE	X	X	X	X	X	X	X	X	X	X
Field FE		X	X	X	X		X	X	X	X
Controls			X	X	X			X	X	X
Reviewer FE				X	X				X	X
Quality					X					X

Notes: OLS regressions of paper component scores, the average of technical merit, readability, originality and relevance (2017 onward). Controls include number of authors on paper, proportion of authors with PhD, proportion of authors affiliated with an Irish institution and proportion of authors affiliated with an Irish institution with WP. Quality controls for number of citations as of December 2021 and a dummy for publication as of June 2022. * $p < 0.10$, ** $p < 0.05$, *** $p < 0.01$.

Table 11: Paper scores by share of male authors interacted with share of authors with PhD

	Male reviewers					Female reviewers				
	(1)	(2)	(3)	(4)	(5)	(6)	(7)	(8)	(9)	(10)
Unblinded										
Proportion male	0.336* (0.190)	0.352* (0.181)	0.387** (0.177)	0.327* (0.183)	0.318* (0.181)	-0.104 (0.269)	0.079 (0.257)	-0.071 (0.258)	-0.218 (0.268)	-0.242 (0.280)
Prop male x Prop PhD	-0.227 (0.228)	-0.229 (0.220)	-0.198 (0.212)	-0.164 (0.219)	-0.168 (0.217)	-0.090 (0.365)	-0.328 (0.415)	-0.130 (0.403)	-0.063 (0.406)	-0.112 (0.411)
Prop PhD	0.466** (0.180)	0.473*** (0.176)	0.423** (0.168)	0.416** (0.183)	0.410** (0.180)	0.450 (0.303)	0.555* (0.310)	0.258 (0.318)	0.252 (0.334)	0.243 (0.342)
N	535	535	535	535	535	132	132	132	132	132
Adj. R-sq	0.048	0.097	0.139	0.214	0.216	0.012	0.020	0.101	0.160	0.158
Blinded										
Proportion male	0.268 (0.383)	0.284 (0.403)	0.162 (0.440)	0.462 (0.559)	0.458 (0.569)	0.512 (0.326)	0.675* (0.349)	0.680* (0.349)	0.114 (0.823)	0.156 (0.630)
Prop male x Prop PhD	-0.213 (0.472)	-0.186 (0.495)	-0.029 (0.520)	-0.183 (0.777)	-0.031 (0.844)	-0.003 (0.444)	0.069 (0.387)	-0.188 (0.465)	0.554 (1.424)	0.714 (1.454)
Prop PhD	0.248 (0.370)	0.236 (0.347)	0.156 (0.375)	0.099 (0.518)	-0.022 (0.537)	0.235 (0.325)	0.352 (0.268)	0.734* (0.380)	-0.113 (1.089)	-0.802 (1.220)
N	127	127	127	127	127	56	56	56	56	56
Adj. R-sq	-0.012	-0.009	0.004	-0.033	0.021	0.023	0.238	0.239	-0.043	0.081
Year FE	X	X	X	X	X	X	X	X	X	X
Field FE		X	X	X	X		X	X	X	X
Controls			X	X	X			X	X	X
Reviewer FE				X	X				X	X
Quality					X					X

Notes: OLS regressions of paper component scores, the average of technical merit, readability, originality and relevance (2017 onward). Controls include number of authors on paper, proportion of authors with PhD, proportion of authors affiliated with an Irish institution and proportion of authors affiliated with an Irish institution with WP. Quality controls for number of citations as of December 2021 and a dummy for publication as of June 2022. * $p < 0.10$, ** $p < 0.05$, *** $p < 0.01$.

Table 12: Paper scores by share of male authors interacted with share of authors with Professor title

	Male reviewers					Female reviewers				
	(1)	(2)	(3)	(4)	(5)	(6)	(7)	(8)	(9)	(10)
Unblinded										
Proportion male	0.204** (0.103)	0.261** (0.103)	0.285*** (0.098)	0.254** (0.101)	0.244** (0.101)	-0.250 (0.181)	-0.244 (0.181)	-0.220 (0.182)	-0.323 (0.198)	-0.385* (0.207)
Prop male x Prop Prof	-0.383 (0.422)	-0.865* (0.494)	-0.669 (0.470)	-0.657 (0.476)	-0.675 (0.468)	0.653 (0.615)	0.673 (0.684)	1.199* (0.686)	1.176 (0.794)	1.332 (0.829)
Prop Prof	0.644** (0.322)	1.011** (0.400)	0.763* (0.390)	0.692* (0.396)	0.700* (0.390)	0.179 (0.498)	-0.023 (0.580)	-0.855 (0.621)	-0.852 (0.785)	-1.044 (0.836)
N	535	535	535	535	535	132	132	132	132	132
Adj. R-sq	0.041	0.093	0.145	0.218	0.220	0.026	0.014	0.106	0.165	0.165
Blinded										
Proportion male	0.092 (0.212)	0.127 (0.206)	0.060 (0.217)	0.132 (0.282)	0.201 (0.295)	0.367 (0.234)	0.590** (0.253)	0.404 (0.256)	0.447 (0.968)	1.123 (0.916)
Prop male x Prop Prof	0.750 (0.841)	0.924 (0.957)	1.276 (0.998)	2.554 (1.943)	2.741 (1.866)	1.454 (0.905)	1.464 (0.938)	1.881 (1.264)	0.088 (4.701)	-2.995 (4.689)
Prop Prof	-0.752 (0.723)	-1.074 (0.846)	-1.371 (0.886)	-2.954 (1.778)	-3.010* (1.572)	-1.431** (0.709)	-1.411* (0.815)	-1.882* (1.076)	-0.967 (3.647)	1.920 (3.852)
N	127	127	127	127	127	56	56	56	56	56
Adj. R-sq	-0.011	-0.000	0.011	0.022	0.077	0.056	0.234	0.274	0.044	0.158
Year FE	X	X	X	X	X	X	X	X	X	X
Field FE		X	X	X	X		X	X	X	X
Controls			X	X	X			X	X	X
Reviewer FE				X	X				X	X
Quality					X					X

Notes: OLS regressions of paper component scores, the average of technical merit, readability, originality and relevance (2017 onward). Controls include number of authors on paper, proportion of authors with PhD, proportion of authors affiliated with an Irish institution and proportion of authors affiliated with an Irish institution with WP. Quality controls for number of citations as of December 2021 and a dummy for publication as of June 2022. * $p < 0.10$, ** $p < 0.05$, *** $p < 0.01$.

Table 13: Paper scores by share of male authors interacted with authors' total number of years post-PhD

	Male reviewers					Female reviewers				
	(1)	(2)	(3)	(4)	(5)	(6)	(7)	(8)	(9)	(10)
Unblinded										
Proportion male	0.291*** (0.111)	0.322*** (0.108)	0.333*** (0.105)	0.281*** (0.106)	0.271** (0.106)	-0.233 (0.190)	-0.192 (0.185)	-0.230 (0.188)	-0.399** (0.190)	-0.461** (0.205)
Prop male x Total years post-PhD	-0.014** (0.007)	-0.016** (0.007)	-0.012* (0.007)	-0.010 (0.007)	-0.011 (0.007)	0.001 (0.013)	-0.001 (0.013)	0.008 (0.015)	0.021 (0.016)	0.022 (0.017)
Total years post-PhD	0.018*** (0.005)	0.019*** (0.006)	0.014** (0.006)	0.013** (0.006)	0.013** (0.006)	0.012 (0.010)	0.013 (0.010)	-0.002 (0.014)	-0.017 (0.015)	-0.018 (0.016)
N	535	535	535	535	535	132	132	132	132	132
Adj. R-sq	0.052	0.101	0.144	0.220	0.222	0.041	0.058	0.101	0.167	0.166
Blinded										
Proportion male	0.198 (0.245)	0.246 (0.265)	0.217 (0.272)	0.784** (0.359)	0.795** (0.334)	0.514* (0.281)	0.726** (0.290)	0.528* (0.293)	0.227 (0.773)	0.382 (0.765)
Prop male x Total years post-PhD	-0.006 (0.011)	-0.008 (0.012)	-0.008 (0.012)	-0.036** (0.017)	-0.030* (0.016)	0.002 (0.010)	0.007 (0.009)	0.005 (0.011)	0.012 (0.023)	0.009 (0.025)
Total years post-PhD	0.008 (0.007)	0.010 (0.007)	0.012 (0.008)	0.024 (0.015)	0.020 (0.016)	-0.000 (0.006)	0.001 (0.005)	0.004 (0.010)	-0.011 (0.017)	-0.009 (0.018)
N	127	127	127	127	127	56	56	56	56	56
Adj. R-sq	-0.006	-0.001	0.006	0.019	0.055	0.009	0.216	0.236	-0.097	0.007
Year FE	X	X	X	X	X	X	X	X	X	X
Field FE		X	X	X	X		X	X	X	X
Controls			X	X	X			X	X	X
Reviewer FE				X	X				X	X
Qualcont					X					X

Notes: OLS regressions of paper component scores, the average of technical merit, readability, originality and relevance (2017 onward). Controls include number of authors on paper, proportion of authors with PhD, proportion of authors affiliated with an Irish institution and proportion of authors affiliated with an Irish institution with WP. Quality controls for number of citations as of December 2021 and a dummy for publication as of June 2022. * $p < 0.10$, ** $p < 0.05$, *** $p < 0.01$.

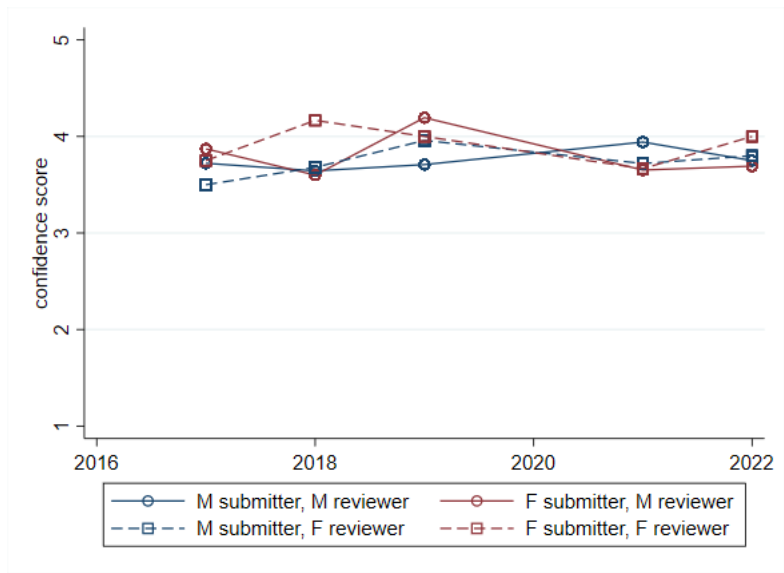


Figure 7: Reviewer confidence by submitter and reviewer gender

Table 14: Paper scores by share of male authors interacted with reviewer's confidence score

	Male reviewers					Female reviewers				
	(1)	(2)	(3)	(4)	(5)	(6)	(7)	(8)	(9)	(10)
Unblinded										
Proportion male	-0.162 (0.533)	-0.152 (0.520)	-0.293 (0.488)	-0.682 (0.511)	-0.682 (0.509)	0.008 (0.817)	0.230 (0.807)	0.690 (0.733)	0.971 (0.952)	0.876 (0.920)
Prop male x Reviewer confidence	0.110 (0.146)	0.104 (0.140)	0.146 (0.132)	0.228* (0.135)	0.229* (0.134)	-0.018 (0.212)	-0.050 (0.206)	-0.173 (0.186)	-0.261 (0.224)	-0.242 (0.215)
Reviewer confidence	0.150 (0.115)	0.149 (0.107)	0.084 (0.103)	0.144 (0.112)	0.142 (0.112)	0.281 (0.178)	0.414** (0.190)	0.527*** (0.161)	0.747*** (0.228)	0.706*** (0.220)
N	406	406	406	406	406	107	107	107	107	107
Adj. R-sq	0.098	0.140	0.183	0.291	0.287	0.045	0.090	0.262	0.316	0.316
Blinded										
Proportion male	-0.501 (0.801)	-0.459 (0.897)	-0.333 (0.896)	-0.819 (1.436)	-0.958 (1.292)	-0.115 (1.163)	0.496 (1.328)	0.734 (1.261)	-0.059 (3.466)	-0.761 (3.003)
Prop male x Reviewer confidence	0.159 (0.198)	0.153 (0.228)	0.115 (0.231)	0.298 (0.362)	0.360 (0.327)	0.173 (0.330)	0.074 (0.346)	-0.044 (0.328)	0.152 (0.810)	0.339 (0.688)
Reviewer confidence	0.131 (0.161)	0.121 (0.194)	0.130 (0.196)	0.044 (0.264)	0.090 (0.213)	-0.126 (0.237)	-0.055 (0.242)	0.022 (0.228)	0.090 (0.706)	-0.222 (0.634)
N	127	127	127	127	127	56	56	56	56	56
Adj. R-sq	0.055	0.050	0.047	0.013	0.121	0.014	0.196	0.217	-0.095	-0.003
Year FE	X	X	X	X	X	X	X	X	X	X
Field FE		X	X	X	X		X	X	X	X
Controls			X	X	X			X	X	X
Reviewer FE				X	X				X	X
Quality					X					X

Notes: OLS regressions of paper component scores, the average of technical merit, readability, originality and relevance (2017 onward). Controls include number of authors on paper, proportion of authors with PhD, proportion of authors affiliated with an Irish institution and proportion of authors affiliated with an Irish institution with WP. Quality controls for number of citations as of December 2021 and a dummy for publication as of June 2022. * $p < 0.10$, ** $p < 0.05$, *** $p < 0.01$.

4 Discussion and Concluding Remarks

We use conference submission data to examine gender diversity in the Irish Economic Association's annual conference from 2016-2022. Acceptance into the conference is measured using i) the organisers' acceptance decision and ii) the reviewer's acceptance score, which influences i). We do not observe gender difference in the former, suggesting that organisers are successful in achieving a gender balance in conference presenters. Neither do we observe gender difference in reviewers' acceptance scores, pooling reviewers of both genders.

However, the above result masks important heterogeneities as, when author names are observable, we find indications that male and female reviewers judge each paper's acceptance differently depending on the share of male authors on a paper. In particular, reviewers exhibit an in-group gender bias. As this bias is somewhat reduced when controlling for the paper's component scores (technical merit, readability, originality and relevance), the bias may simply reflect differing paper quality which is correlated with the gender of the author. For example, male reviewers may give higher acceptance scores to male authors because their papers are of better quality—which could be due to the lower quality of female-authored papers in male-dominated fields.

We next turn to the component scores to determine if they also exhibit gender gaps. While component scores assigned by female reviewers do not differ much for male and female authors, male reviewers give higher component scores to male-authored papers. As suggested by [Hospido and Sanz \(2021\)](#), male reviewers' discrimination against female authors may reflect a stereotype used to address the problem of information asymmetry. We find suggestive evidence along these lines: male reviewers' bias is pre-dominantly driven by less well-known authors, as proxied by affiliation, the proportion of PhD or Professor authors and the overall experience of all authors on a paper (measured by total years post-PhD). However, higher reviewer confidence does not eliminate the gender bias, which suggests that the bias is not driven by reviewers being conscious of the information asymmetry.

Finally, we exploit a change in 2021 to anonymised submission to study whether the gender bias persists. While blinding successfully removes male reviewers' gender bias, it surprisingly overturns female reviewers bias such that they now favour male-authored papers. This bias is somewhat reduced for papers with Irish authors, which may increase the reviewer's familiarity with it despite blinding, thus suggesting that (where possible) reviewers attempt to favour female authors. On the other hand, this finding also suggests that when a paper is completely unfamiliar and reviewers have to rely purely on its content to judge quality, female referees may turn to paper characteristics that correlate with a higher share of male authors, such as technical merit and (surprisingly, but to a lesser extent) readability. However, we hesitate to speculate further given the small number of observations driving the result. Rather, more data and further research possibly in other contexts are needed to draw strong conclusions, for example by allocating the same paper to both male and female reviewers.

References

- Åslund, O. and Skans, O. N. (2012). Do anonymous job application procedures level the playing field? *Industrial and Labor Relations Review*, 65(1):82–107.
- Baltrunaite, A., Casarico, A., and Rizzica, L. (2022). Women in economics: The role of gendered references at entry in the profession. Centre for Economic Policy Research Discussion Paper No. 17474.
- Bayer, A. and Rouse, C. E. (2016). Diversity in the economics profession: A new attack on an old problem. *Journal of Economic Perspectives*, 30(4):221–42.
- Behaghel, L., Crépon, B., and Le Barbanchon, T. (2015). Unintended effects of anonymous resumes. *American Economic Journal: Applied Economics*, 7(3):1–27.
- Blank, R. M. (1991). The effects of double-blind versus single-blind reviewing: Experimen-

- tal evidence from the American Economic Review. *The American Economic Review*, pages 1041–1067.
- Boring, A. (2017). Gender biases in student evaluations of teaching. *Journal of Public Economics*, 145:27–41.
- Boring, A. and Philippe, A. (2021). Reducing discrimination in the field: Evidence from an awareness raising intervention targeting gender biases in student evaluations of teaching. *Journal of Public Economics*, 193:104323.
- Card, D., DellaVigna, S., Funk, P., and Iriberry, N. (2020). Are referees and editors in economics gender neutral? *The Quarterly Journal of Economics*, 135(1):269–327.
- Carlsson, F., Löfgren, Å., and Sterner, T. (2012). Discrimination in scientific review: A natural field experiment on blind versus non-blind reviews. *The Scandinavian Journal of Economics*, 114(2):500–519.
- Chari, A. and Goldsmith-Pinkham, P. (2017). Gender representation in economics across topics and time: Evidence from the NBER Summer Institute. National Bureau of Economic Research Working Paper No. 23953.
- Doleac, J. L., Hengel, E., and Pancotti, E. (2021). Diversity in economics seminars: Who gives invited talks? *AEA Papers and Proceedings*, 111:55–59.
- Ductor, L., Goyal, S., and Prummer, A. (forth.). Gender and collaboration. *The Review of Economics and Statistics*.
- Dupas, P., Modestino, A. S., Niederle, M., Wolfers, J., et al. (2021). Gender and the dynamics of economics seminars. National Bureau of Economic Research Working Paper No. 28494.
- Eberhardt, M., Facchini, G., and Rueda, V. (2022). Gender differences in reference letters: Evidence from the economics job market. Centre for Economic Policy Research Discussion Paper No. 16960.

- Ginther, D. K. and Kahn, S. (2021). Women in academic economics: Have we made progress? *AEA Papers and Proceedings*, 111:138–42.
- Goldin, C. and Rouse, C. (2000). Orchestrating impartiality: The impact of “blind” auditions on female musicians. *American Economic Review*, 90(4):715–741.
- Hengel, E. (forth.). Publishing while female. *Economic Journal*.
- Hengel, E. and Moon, E. (2020). Gender and equality at top economics journals. Working Paper.
- Hospido, L. and Sanz, C. (2021). Gender gaps in the evaluation of research: Evidence from submissions to economics conferences. *Oxford Bulletin of Economics and Statistics*, 83(3):590–618.
- Huber, J., Inoua, S., Kerschbamer, R., König-Kersting, C., Palan, S., and Smith, V. L. (2022). Nobel and novice: Author prominence affects peer review. Working Paper.
- Koffi, M. (2021a). Gendered citations at top economic journals. *AEA Papers and Proceedings*, 111:60–64.
- Koffi, M. (2021b). Innovative ideas and gender inequality. Working Paper.
- Krause, A., Rinne, U., and Zimmermann, K. F. (2012a). Anonymous job applications in Europe. *IZA Journal of European Labor Studies*, 1(1):1–20.
- Krause, A., Rinne, U., and Zimmermann, K. F. (2012b). Anonymous job applications of fresh Ph.D. economists. *Economics Letters*, 117(2):441–444.
- Lundberg, S. and Stearns, J. (2019). Women in economics: Stalled progress. *Journal of Economic Perspectives*, 33(1):3–22.
- Mengel, F., Sauermann, J., and Zölitz, U. (2019). Gender bias in teaching evaluations. *Journal of the European Economic Association*, 17(2):535–566.

- Ross, J. S., Gross, C. P., Desai, M. M., Hong, Y., Grant, A. O., Daniels, S. R., Hachinski, V. C., Gibbons, R. J., Gardner, T. J., and Krumholz, H. M. (2006). Effect of blinded peer review on abstract acceptance. *JAMA*, 295(14):1675–1680.
- Sarsons, H., Gërkhani, K., Reuben, E., and Schram, A. (2021). Gender differences in recognition for group work. *Journal of Political Economy*, 129(1):101–147.
- Tomkins, A., Zhang, M., and Heavlin, W. D. (2017). Reviewer bias in single-versus double-blind peer review. *Proceedings of the National Academy of Sciences*, 114(48):12708–12713.
- Wu, A. H. (2020). Gender bias among professionals: An identity-based interpretation. *Review of Economics and Statistics*, 102(5):867–880.

UCD CENTRE FOR ECONOMIC RESEARCH – RECENT WORKING PAPERS

- [WP21/28](#) Linda Mastrandrea: 'Linking Retail Electricity Pricing and the Decarbonisation of the Energy Sector: a Microeconomic Approach' December 2021
- [WP22/01](#) Doina Caragea, Theodor Cojoianu, Mihai Dobri, Andreas Hoepner and Oana Peia 'Competition and Innovation in the Financial Sector: Evidence from the Rise of FinTech Start-ups' January 2022
- [WP21/02](#) Sandra E Black, Paul J Devereux, Fanny Landaud and Kjell G Salvanes: 'The (Un)Importance of Inheritance' January 2022
- [WP22/03](#) Claes Ek and Margaret Samahita: 'Pessimism and Overcommitment: An Online Experiment with Tempting YouTube Content' January 2022
- [WP22/04](#) Paul J Devereux: 'Fragility of the Marginal Treatment Effect' January 2022
- [WP22/05](#) Lucie Martin, Liam Delaney and Orla Doyle: 'Everyday Administrative Burdens and Inequality' February 2022
- [WP22/06](#) Karl Whelan: 'The Past, Present and Future of Euro Area Monetary-Fiscal Interactions' February 2022
- [WP22/07](#) Constantin Bürgi and Julio L Ortiz: 'Temporal Consistency of Forecasts And DataReleases' February 2022
- [WP22/08](#) Eoin T Flaherty: 'Do Former Employees of Foreign MNEs Boost Incumbent Workers' Wages in Domestic Firms?' February 2022
- [WP22/09](#) Annette Alstadsæter, Julie Brun Bjørkheim, Ronald B Davies and Johannes Scheuerer: 'Pennies from Haven: Wages and Profit Shifting' February 2022
- [WP22/10](#) Judith M. Delaney, Paul J. Devereux: 'Rank Effects in Education: What do we know so far?' March 2022
- [WP22/11](#) Lena Susanne Specht: 'International trade effects of student migration' March 2022
- [WP22/12](#) Dimitrios Bermpeloglou, Yota Deli, Sarantis Kalyvitis: 'Investment Tax Incentives and Their Big Time-to-Build Fiscal Multiplier' April 2022
- [WP22/13](#) Tadgh Hegarty, Karl Whelan: 'The Wisdom of No Crowds: The Reaction of Betting Markets to Lockdown Soccer Games' April 2022
- [WP22/14](#) Manthos D. Delis, Yota D. Deli, José-Luis Peydró, Adele Whelan: 'Education and Credit: A Matthew Effect' April 2022
- [WP22/15](#) Diane Pelly: 'Worker well-being and quit intentions: is measuring job satisfaction enough?' April 2022
- [WP22/16](#) Kevin Devereux, Margaret Samahita: 'Gender, Productivity, and Promotion in the Irish Economics Profession' June 2022
- [WP22/17](#) Manuel E. Lago, Santiago Lago-Peñas, Jorge Martinez-Vazquez: 'On the Effects of Intergovernmental Grants: A Survey' June 2022
- [WP22/18](#) Judith M. Delaney, Paul J. Devereux: 'Gender Differences in STEM Persistence after Graduation' June 2022
- [WP22/19](#) Karl Whelan: 'Where Do We Stand With "Whatever It Takes"?' July 2022
- [WP22/20](#) Neil Cummins, Cormac Ó Gráda: 'The Irish in England' July 2022
- [WP22/21](#) Yota Deli, Manthos D. Delis, Iftekhar Hasan, Panagiotis N. Politsidis, Anthony Saunders: 'Corporate tax changes and credit costs' July 2022
- [WP22/23](#) Karl Whelan: 'US Taxation of Gambling Winnings and Incentives to Bet' August 2022
- [WP22/23](#) Karl Whelan: 'Risk Aversion and Favorite-Longshot Bias in a Competitive Fixed-Odds Betting Market' August 2022
- [WP22/24](#) Diane Pelly, Orla Doyle: 'Nudging in the workplace: increasing participation in employee EDI wellness events' October 2022