

Caporale, Guglielmo Maria; Gil-Alana, Luis A.

Working Paper

US disposable personal income and housing price index: A fractional integration analysis

CESifo Working Paper, No. 3208

Provided in Cooperation with:

Ifo Institute – Leibniz Institute for Economic Research at the University of Munich

Suggested Citation: Caporale, Guglielmo Maria; Gil-Alana, Luis A. (2010) : US disposable personal income and housing price index: A fractional integration analysis, CESifo Working Paper, No. 3208, Center for Economic Studies and ifo Institute (CESifo), Munich

This Version is available at:

<https://hdl.handle.net/10419/46253>

Standard-Nutzungsbedingungen:

Die Dokumente auf EconStor dürfen zu eigenen wissenschaftlichen Zwecken und zum Privatgebrauch gespeichert und kopiert werden.

Sie dürfen die Dokumente nicht für öffentliche oder kommerzielle Zwecke vervielfältigen, öffentlich ausstellen, öffentlich zugänglich machen, vertreiben oder anderweitig nutzen.

Sofern die Verfasser die Dokumente unter Open-Content-Lizenzen (insbesondere CC-Lizenzen) zur Verfügung gestellt haben sollten, gelten abweichend von diesen Nutzungsbedingungen die in der dort genannten Lizenz gewährten Nutzungsrechte.

Terms of use:

Documents in EconStor may be saved and copied for your personal and scholarly purposes.

You are not to copy documents for public or commercial purposes, to exhibit the documents publicly, to make them publicly available on the internet, or to distribute or otherwise use the documents in public.

If the documents have been made available under an Open Content Licence (especially Creative Commons Licences), you may exercise further usage rights as specified in the indicated licence.

US Disposable Personal Income and Housing Price Index: A Fractional Integration Analysis

Guglielmo Maria Caporale
Luis A. Gil-Alana

CESIFO WORKING PAPER NO. 3208
CATEGORY 7: MONETARY POLICY AND INTERNATIONAL FINANCE
OCTOBER 2010

An electronic version of the paper may be downloaded

- *from the SSRN website:* www.SSRN.com
- *from the RePEc website:* www.RePEc.org
- *from the CESifo website:* www.CESifo-group.org/wp

US Disposable Personal Income and Housing Price Index: A Fractional Integration Analysis

Abstract

This paper examines the relationship between US disposable personal income (DPI) and house price index (HPI) during the last twenty years applying fractional integration and long-range dependence techniques to monthly data from January 1991 to July 2010. The empirical findings indicate that the stochastic properties of the two series are such that cointegration cannot hold between them, as mean reversion occurs in the case of DPI but not of HPI. Also, recursive analysis shows that the estimated fractional parameter is relatively stable over time for DPI whilst it increases throughout the sample for HPI. Interestingly, the estimates tend to converge toward the unit root case after 2008 once the bubble had burst. The implications for explaining the recent financial crisis and choosing appropriate policy actions are discussed.

JEL-Code: C22, E30.

Keywords: personal disposable income, house price index, fractional integration.

Guglielmo Maria Caporale
Centre for Empirical Finance
Brunel University
UK – West London, UB8 3PH
United Kingdom
Guglielmo-Maria.Caporale@brunel.ac.uk

Luis A. Gil-Alana
University of Navarra
Faculty of Economics and Business
Administration / Edificio Biblioteca
Spain - 31080 Pamplona
alana@unav.es

October 2010

The second named-author gratefully acknowledges financial support from the Ministerio de Ciencia y Tecnología (ECO2008-03035 ECON Y FINANZAS, Spain) and from a PIUNA Project from the University of Navarra.

1. Introduction

Real estate bubbles are a controversial topic in economics. Whether it is possible to identify them and whether policy-makers should act to prevent them is a hotly debated issue. Mainstream economists argue that central banks should only target inflation and counter-cyclical monetary and fiscal policy should be adopted to smooth the wealth effects of bubbles only once they have occurred. In particular, in their view by adopting inflation targeting and focusing on inflationary or deflationary pressures, a central bank effectively minimises the negative side effects of short-run, extremely volatile asset prices, without having to target them directly (see, e.g., Bernanke and Gertler, 2001).

However, in a more recent study, Bernanke and Kuttner (2005) argued that the stock market is an independent source of macroeconomic volatility to which policy makers might need to respond in order to reduce inflation volatility, and the same might of course apply to other types of asset prices such as house prices. Cartensen (2004) and Cecchetti et al. (2000) also took the view that policy makers should give more consideration to asset price movements to reduce the risk of economic instability resulting from boom and bust in business cycles. Cecchetti et al., (2000), for example, argued that monetary authorities should take into account asset price movements with the aim of achieving macroeconomic stability.

Concerning house prices in particular, Post-Keynesian economists emphasise that bubbles lead to higher borrowing against increasing property values, and therefore to higher levels of debt the burden of which increases when the bubble bursts and property prices collapse, which reduces aggregate consumption and demand causing a fall in economic activity (this is the so-called debt deflation theory initially developed by Fisher, 1933); they suggest therefore that in order to avoid such a scenario methods should be developed to identify bubbles and policy actions taken to prevent them or to deflate existing ones. Various housing market indicators have in fact been constructed with the

aim of detecting possible bubbles. These include housing affordability measures, housing debt measures, housing ownership and rent measures, as well as housing price indices. Of the latter, one of the most commonly used in the US is the HPI produced by the Federal Housing Finance Agency.

Even before the US housing bubble which led to the financial crisis starting in 2007 there had been a lot of interest in the behaviour of house prices in the OECD countries, given their sharp increase since the 1990s. Some studies had expressed the concern that the observed divergence between house prices and fundamentals driving them, in particular household income, indicated the existence of a bubble (see, e.g., Case and Shiller, 2003 and McCarthy and Peach, 2004). Other authors had previously highlighted the fact that the macroeconomic effects of bubbles can differ considerably across countries depending on their housing and financial market institutions (see Maclennan et al., 1998) or the linkages between housing and labour markets (see Meen, 2002).

The subprime mortgage crisis starting in the US in 2007 has made the issue of the relationship between disposable personal income (DPI) and the housing price index (HPI) even more crucial, since there is wide agreement that the significant discrepancy between these two variables in the US was one of the main factors triggering off a global financial crisis of unprecedented severity.

From an econometric point of view, the existence of a long-run relationship between these two variables implies that they should be cointegrated, namely that, although the two individual series might be nonstationary $I(1)$, there exists a linear combination of the two which is stationary $I(0)$. This paper uses US monthly data to test whether this holds empirically. We carry out long-range dependence tests which allow for fractional degrees of differentiation (including the special cases of 1 and 0 degrees of integration). The main finding of our analysis is that cointegration cannot hold between these two series since they exhibit different degrees of integration. Specifically, DPI is

found to be $I(d)$ with $0.5 < d < 1$ (d being the fractional degree of differentiation), implying that it is nonstationary but mean-reverting. On the contrary, in the case of HPI, d is strictly above 1, with a value around 1.4, implying that this series is both nonstationary and non-mean-reverting. Thus, while the effects of shocks to DPI will tend to disappear in the long run, those to HPI have permanent effects, and require decisive policy measures to bring about mean reversion. We also investigate whether this is a consequence of the crisis of 2007 or it has its origins in an earlier period. For this purpose we implement recursive procedures from 2000 till the end of the sample in 2010.

The layout of the paper is as follows. Section 2 outlines the econometric methodology. Section 3 describes the data and presents the empirical results. Section 4 offers some concluding remarks.

2. Econometric Methodology

In this paper we characterise the nonstationarity of the series in terms of a long memory process. Two definitions of long memory can be adopted, one in the time domain and the other in the frequency domain.

Let us consider a zero-mean covariance stationary process $\{x_t, t = 0, \pm 1, \dots\}$ with autocovariance function $\gamma_u = E(x_t x_{t+u})$. The time domain definition of long memory states

that $\sum_{u=-\infty}^{\infty} |\gamma_u| = \infty$. Now, assuming that x_t has an absolutely continuous spectral distribution,

so that it has spectral density function

$$f(\lambda) = \frac{1}{2\pi} \left(\gamma_0 + 2 \sum_{u=1}^{\infty} \gamma_u \cos(\lambda u) \right), \quad (1)$$

the frequency domain definition of long memory states that the spectral density function is unbounded at some frequency λ in the interval $[0, \pi)$. Most of the empirical literature has

concentrated on the case where the singularity or pole in the spectrum takes place at the 0-frequency. This is the case of the standard I(d) models of the form:

$$\begin{aligned} (1 - L)^d x_t &= u_t, & t &= 0, \pm 1, \dots, \\ x_t &= 0, & t &\leq 0, \end{aligned} \quad (2)$$

where L is the lag-operator ($Lx_t = x_{t-1}$) and u_t is $I(0)$.¹ However, fractional integration may also occur at other frequencies away from 0, as in the case of seasonal/cyclical models.

Note that the polynomial $(1-L)^d$ in (2) can be expressed in terms of its Binomial expansion, such that, for all real d ,

$$(1 - L)^d = \sum_{j=0}^{\infty} \psi_j L^j = \sum_{j=0}^{\infty} \binom{d}{j} (-1)^j L^j = 1 - d L + \frac{d(d-1)}{2} L^2 - \dots,$$

and thus

$$(1 - L)^d x_t = x_t - d x_{t-1} + \frac{d(d-1)}{2} x_{t-2} - \dots$$

In this context, d plays a crucial role since it is an indicator of the degree of dependence of the time series: the higher the value of d is, the higher the level of association will be between the observations. Processes with $d > 0$ in (2) display the property of “*long memory*”, with the autocorrelations decaying hyperbolically slowly and the spectral density function being unbounded at the origin. If $d = 0$ in (2), $x_t = u_t$, and the series is $I(0)$. If d belongs to the interval $(0, 0.5)$ the series is still covariance stationary but the autocorrelations take a longer time to disappear than in the $I(0)$ case. If d is in the interval $[0.5, 1)$ the series is no longer stationary; however, it is still mean-reverting in the sense that the effects of shocks disappear in the long run. Finally, if $d \geq 1$ the series is nonstationary and non-mean-reverting. Thus, by letting d take real values, one allows for a richer degree of flexibility in the dynamic specification of the series, not achieved when

using the classical I(0) and I(1) representations. These processes (with non-integer d) were introduced by Granger (1980, 1981), Granger and Joyeux (1980) and Hosking (1981) and since then have been widely employed to describe the behaviour of many economic and financial time series data (see, e.g., Diebold and Rudebusch, 1989; Sowell, 1992; Gil-Alana and Robinson, 1997).²

In this paper, we estimate the fractional differencing parameter d using the Whittle function in the frequency domain (Dahlhaus, 1989) along with a testing procedure developed by Robinson (1994) that allows to test the null hypothesis $H_0: d = d_0$ in equation (2) for any real value d_0 , with x_t being the errors in a regression model of the form:

$$y_t = \beta^T z_t + x_t, \quad t = 1, 2, \dots, \quad (3)$$

where y_t is the time series we observe, β is a $(k \times 1)$ vector of unknown coefficients and z_t is a set of deterministic terms that might include an intercept (i.e., $z_t = 1$), an intercept with a linear time trend ($z_t = (1, t)^T$), or any other type of deterministic processes.

We also apply a method based on a semiparametric local Whittle estimator (see Robinson, 1995). The estimator is implicitly defined by:

$$\hat{d} = \arg \min_d \left(\log \overline{C(d)} - 2d \frac{1}{m} \sum_{s=1}^m \log \lambda_s \right), \quad (4)$$

$$\overline{C(d)} = \frac{1}{m} \sum_{s=1}^m I(\lambda_s) \lambda_s^{2d}, \quad \lambda_s = \frac{2\pi s}{T}, \quad \frac{m}{T} \rightarrow 0,$$

where $I(\lambda_s)$ is the periodogram of the raw time series, x_t , given by:

$$I(\lambda_s) = \frac{1}{2\pi T} \left| \sum_{t=1}^T x_t e^{i\lambda_s t} \right|^2,$$

and $d \in (-0.5, 0.5)$. Under finiteness of the fourth moment and other mild conditions, Robinson (1995) proved that:

¹ An I(0) process is defined as a covariance stationary process with spectral density function that is positive and finite at all frequencies.

$$\sqrt{m} (\hat{d} - d_o) \rightarrow_d N(0, 1/4) \quad \text{as } T \rightarrow \infty,$$

where d_o is the true value of d .

Although there are further refinements of this procedure (e.g., Velasco, 1999, Phillips and Shimotsu, 2004, 2005; etc.), these methods require additional user-chosen parameters, and therefore the estimation results for d can be very sensitive to the choice of these parameters. In this respect, the “local” Whittle method of Robinson (1995), which is computationally simpler, appears to be preferable.

3. Data and empirical results

The series used for the analysis are US Disposable Personal Income (DPI), monthly, seasonally adjusted, obtained from the St. Louis Federal Reserve Bank database, and the US House Price Index (HPI), constructed by the Federal Housing Finance Agency (<http://www.fhfa.gov>). For both series the sample starts in 1991m1 and ends in 2010m6.

[Insert Figures 1 and 2 about here]

Figure 1 displays the time series plots of the log-transformed data and of their first differences (their growth rates). It can be seen that both log-prices behave in a very similar way till April 2007 where HPI starts falling. Instead the corresponding growth rates (in the bottom panels of the Figure) exhibit a very different pattern: that of DPI is relatively stable over time, whilst that of HPI is quite stable until 1995, then increases till mid-2005 when it falls, followed by another sharper fall at the beginning of 2007 coinciding with the start of the crisis. Figure 2 displays the correlograms of the four series. The slow decrease in the sample autocorrelation values of the log-prices series clearly suggests that they are nonstationary. However, the correlograms of the growth rates indicate again a very different pattern for the two series: whilst in the case of the growth rate of DPI most of the

² See Gil-Alana and Hualde (2009) for an up-to-date review of fractional integration and cointegration in macroeconomic time series.

values are within the 95% confidence interval, in case of HPI the decay is very slow, which may be consistent with an I(d) model and $d > 0$.³

Table 1 reports the estimates of d in the following model,

$$y_t = \alpha + \beta t + x_t; \quad (1 - L)^d x_t = u_t, \quad t = 1, 2, \dots, \quad (5)$$

assuming that the error term u_t is white noise and autocorrelated in turn. In the latter case, we consider first an AR(1) process, and then the exponential spectral model of Bloomfield (1973), this being a non-parametric approach that produces autocorrelations decaying exponentially as in the AR(MA) case. Finally, we also allow for a seasonal (monthly) AR(1) process. Along with the (Whittle) estimates of d we also display the 95% confidence band of the non-rejection values of d using Robinson's (1994) parametric approach.

Starting with the log of the DPI (in the top panel of Table 1), it can be seen that if no regressors are included (i.e., $\alpha = \beta = 0$ in (5)), the unit root null hypothesis (i.e., $d = 1$) cannot be rejected for the cases of white noise, Bloomfield and seasonal AR disturbances. Moreover, if u_t is AR(1) the non-rejection values of d are strictly above 1. On the other hand, when assuming more realistically that the process contains an intercept and/or a linear trend, the unit root null is rejected in all cases in favour of smaller degrees of integration. The estimates of d are between 0.821 and 0.873 in the case of an intercept, and between 0.752 and 0.840 with a linear time trend, depending on the type of specification adopted for the disturbances.

[Insert Table 1 about here]

The lower panel in Table 1 presents the estimates of d for the log of HPI. When deterministic terms are not included the results are very similar to those for the DPI series and the I(1) hypothesis cannot be rejected in most of the cases. However, when an

³ Also, the significant negative first sample autocorrelation value in the correlogram of the DPI growth rate indicates that this series might be now overdifferenced.

intercept and/or a linear time trend are included, the unit root null is decisively rejected for all types of disturbances, the estimated values of d ranging between 1.427 and 1.492 for the case of an intercept, and between 1.424 and 1.483 in the presence of a linear trend.

The above results indicate very different stochastic properties of the two series: whilst DPI exhibits an order of integration strictly below 1 implying mean reversion, the order of integration of HPI is strictly above 1, indicating lack of mean reversion and implying that the growth rate still displays long memory. These features of the data invalidate cointegration analysis between the two series, since in the bivariate case a necessary condition for the existence of a long-run equilibrium relationship is that the two series display the same degree of integration.

To check the robustness of result that the two series exhibit different orders of integration we also apply the semiparametric Whittle method of Robinson (1995). Figure 3 displays the corresponding results. The bandwidth parameter is reported on the horizontal axis, the estimated value of d is shown on the vertical one.⁴ We also display in the figure the 95% confidence intervals corresponding to the $I(1)$ case. The results are consistent with those based on the parametric models. Specifically, for the log of DPI (displayed in the top panel) the estimates of d are within or below the $I(1)$ interval, depending on the choice of the bandwidth parameter m : when this is small most of the estimates are within the interval; however, when increasing its value the estimates are strictly below the interval.⁵

[Insert Figure 3 about here]

Focusing now on the log of HPI (in the lower panel of Figure 3), it is evident that all the estimates of d are above the $I(1)$ interval for all the bandwidth parameters.

⁴ In the case of the Whittle semiparametric estimator of Robinson (1995), the use of optimal values for the bandwidth parameter has not been theoretically justified. Some authors, such as Lobato and Savin (1998), use an interval of values for m . We have chosen instead to report the results for the whole range of values of m .

⁵ This clearly shows the trade-off between bias and variance with respect to the choice of the bandwidth parameter.

The final issue examined is parameter stability, in particular whether or not the degree of persistence of each series has changed over time. This is important to establish whether there were any signs of the impending crisis.⁶ For this purpose, we estimate again the value of d for each series with a sample ending initially at 1999m12. Then, we re-estimate d adding one observation each time in a recursive manner. First, we conduct the analysis with white noise disturbances (see Figure 4), then for the case of seasonal AR disturbances (see Figure 5).⁷

[Insert Figures 4 and 5 about here]

Starting with the log of DPI with white noise errors, it is found that the estimated value of d remains relatively stable till mid-2008 when it starts increasing. As for the log of HPI, the value of d keeps increasing from the beginning of 2000 till the end of 2008, with a particularly sharp increase in 2007 and 2008; then it starts decreasing in 2009. Very similar results are found in the case of seasonal AR(1) errors (see Figure 5). Note also that after mid-2008 the estimated value of d increases for the log of DPI whilst it sharply decreases for the log of HPI, which may be seen as a correction of the disequilibrium between the two series once the bubble had burst. Of course, convergence of these estimates of d for both series towards 1 implies that the unit root null will not be rejected and cointegration will be found at some future time.

4. Conclusions

The US subprime mortgage crisis of 2007 and the following worldwide financial crisis have led to an even greater degree of interest in housing bubbles, methods to detect them, and appropriate policy actions to prevent them or smooth their effects once they have occurred. This paper has analysed the relationship between disposable personal income

⁶ For instance, it might be useful to determine if cointegration holds for shorter periods of time before the crisis.

(DPI) and the housing price index (HPI) in the US applying fractional integration and long-range dependence techniques to monthly data. The empirical findings obtained for the time period 1991m1 – 2010m6 indicate that the stochastic properties of the two series are such that cointegration cannot hold between them, as mean reversion occurs in the case of DPI but not of HPI. This provides useful information for explaining the recent financial crisis and choosing appropriate policy actions: the divergence between the two series might be related with a bubble in the housing sector, which might have had its origin in the mid- or late 90s. Note that the lack of available data before the 90s precludes us from examining the possibility of cointegration over a longer time span. However, it does seem that, after the bubble had burst, the estimates of d started converging towards one for both series.

The implications of the analysis for crisis management and/or prevention are not obvious, although visual inspection of the growth rates of the two series (see the bottom panels in Figure 1) clearly shows divergence from 1995. Therefore, it might be argued that perhaps it would have been desirable to implement active policies to burst the bubble already at that time.⁸

One interesting extension of this paper would be to examine if similar features can also be found in other developed countries. In particular, the degrees of integration of the log-DPI and log-HPI series could be analysed to establish whether mean reversion occurs or instead the unit root null cannot be rejected. Work along these lines is currently in progress.

⁷ It would have also been interesting to carry out the analysis for the sub-period 1990-1995. However, the number of observations would then be too limited to apply fractional integration techniques.

⁸ Note, however, that this is a rather strong conclusion to draw on the basis of univariate tests.

References

- Bernanke, B. and M. Gertler (2001). "Should Central Banks Respond to Movements in Asset Prices?", *American Economic Review*, 91 (May), pp. 253-57.
- Bernanke, B. and K.N. Kuttner, (2005). "What Explains the Stock Market's Reaction to Federal Reserve Policy?," *Journal of Finance*, American Finance Association, vol. 60(3), pages 1221-1257, 06.
- Bloomfield, P., 1973, An exponential model in the spectrum of a scalar time series, *Biometrika* 60, 217-226.
- Carstensen, K., (2004), "Stock Market Downswing and the Stability of European Monetary Union Money Demand", *Journal of Business and Economic Statistics*, Vol 24, October, pp 395-402
- Case, K.E. and R. Shiller (2003), "Is there a bubble in the housing market?", *Brookings Papers on Economic Activity*, 2, 299-342.
- Cecchetti, S., H. Genberg, J. Lipsky and S. Wadhvani (2000), "Asset Prices and Central Bank Policy", *Geneva Reports on the World Economy*, 2, International Centre for Monetary and Banking Studies and Centre for Economic Policy Research.
- Dahlhaus, R. (1989) Efficient parameter estimation for self-similar process. *Annals of Statistics* 17, 1749-1766.
- Diebold, F.X. and G.D. Rudebusch, 1989, Long memory and persistence in aggregate output, *Journal of Monetary Economics* 24, 189-209.
- Fisher, I. (1933), "The debt deflation theory of Great Depressions", *Econometrica*, 1, 3, 337-357.
- Gil-Alana, L.A. and J. Hualde (2009) Fractional integration and cointegration. An overview with an empirical application. *The Palgrave Handbook of Applied Econometrics*, Volume 2. Edited by Terence C. Mills and Kerry Patterson, MacMillan Publishers, pp. 434-472.

Gil-Alana, L.A. and Robinson, P.M., 1997, Testing of unit roots and other nonstationary hypotheses in macroeconomic time series, *Journal of Econometrics* 80, 241-268.

Granger, C.W.J. (1980) Long memory relationships and the aggregation of dynamic models. *Journal of Econometrics* 14, 227-238.

Granger, C.W.J., 1981, Some properties of time series data and their use in econometric model specification, *Journal of Econometrics* 16, 121-130.

Granger, C.W.J. and R. Joyeux, 1980, An introduction to long memory time series and fractionally differencing, *Journal of Time Series Analysis* 1, 15-29.

Hosking, J.R.M., 1981, Fractional differencing, *Biometrika* 68, 168-176.

Lobato, I.N. and N.E. Savin, 1998. Real and spurious long memory properties of stock market data. *Journal of Business and Economic Statistics* 16, 261-283.

McCarthy, J. and R.W. Peach (2004), "Are home prices the next "bubble"?", *Economic Policy Review*, 10, Federal Reserve Board of New York.

Maclennan, D., Mullbauer, J. and M. Stephens (1998), "Asymmetries in housing and financial markets institutions and EMU", *Oxford Review of Economic Policy*, 14, 54-80.

Meen, G. (2002), "The time-series behaviour of house prices: a transatlantic divide?" *Journal of Housing Economics*, 11, 1-23.

Phillips, P.C.B. and K. Shimotsu, 2004. Local Whittle estimation in nonstationary and unit root cases. *Annals of Statistics* 32, 656-692.

Phillips, P.C.B. and K. Shimotsu, 2005. Exact local Whittle estimation of fractional integration. *Annals of Statistics* 33, 4, 1890-1933.

Robinson, P.M. (1994) Efficient tests of nonstationary hypotheses. *Journal of the American Statistical Association* 89, 1420-1437.

Robinson, P.M., 1995. Gaussian semiparametric estimation of long range dependence. *Annals of Statistics* 23, 1630-1661.

Sowell, F., 1992, Modelling long run behaviour with the fractional ARIMA model, *Journal of Monetary Economics* 29, 277-302.

Velasco, C., 1999. Gaussian semiparametric estimation of nonstationary time series, *Journal of Time Series Analysis* 20, 87-127.

Figure 1: Time series plots

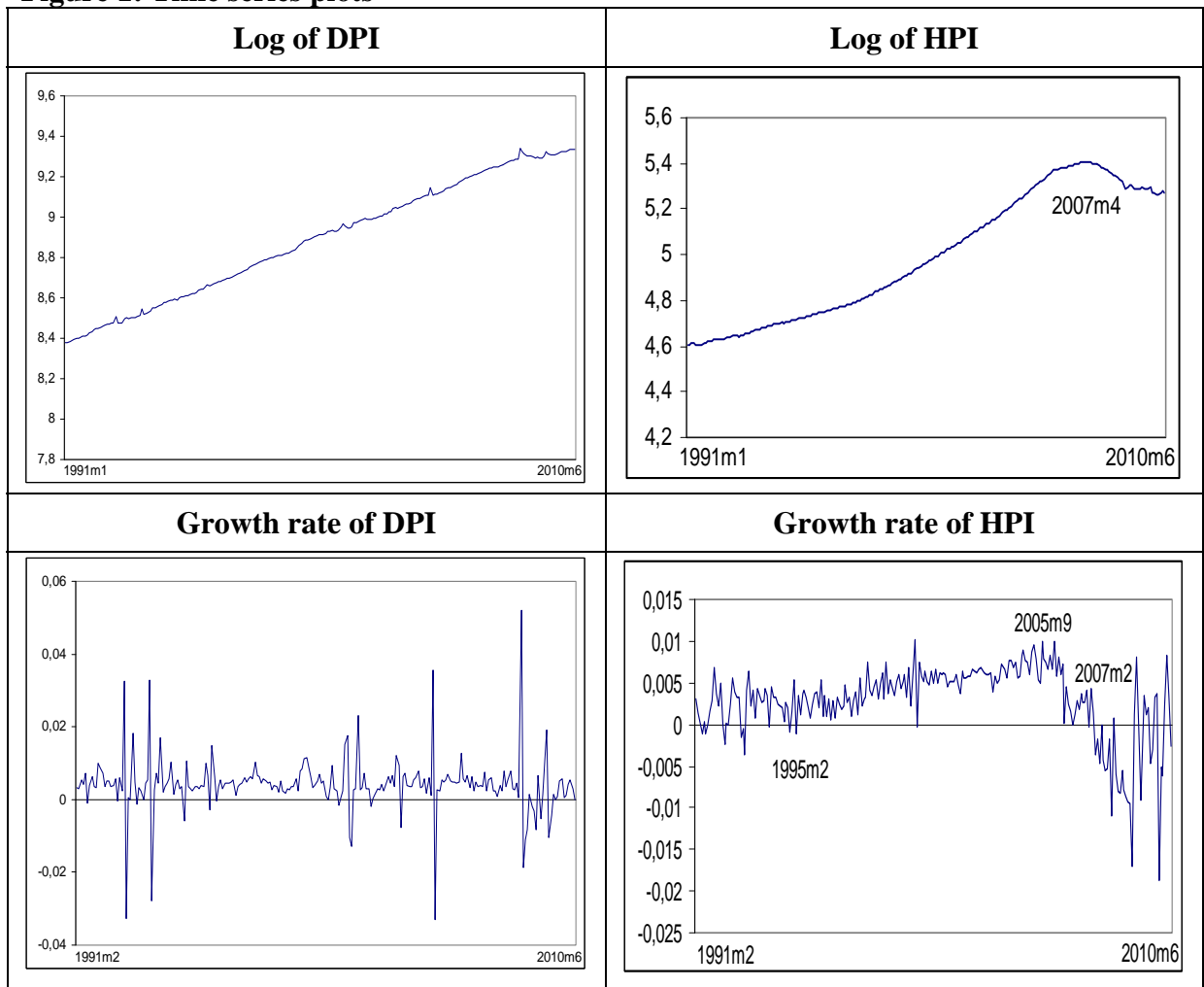
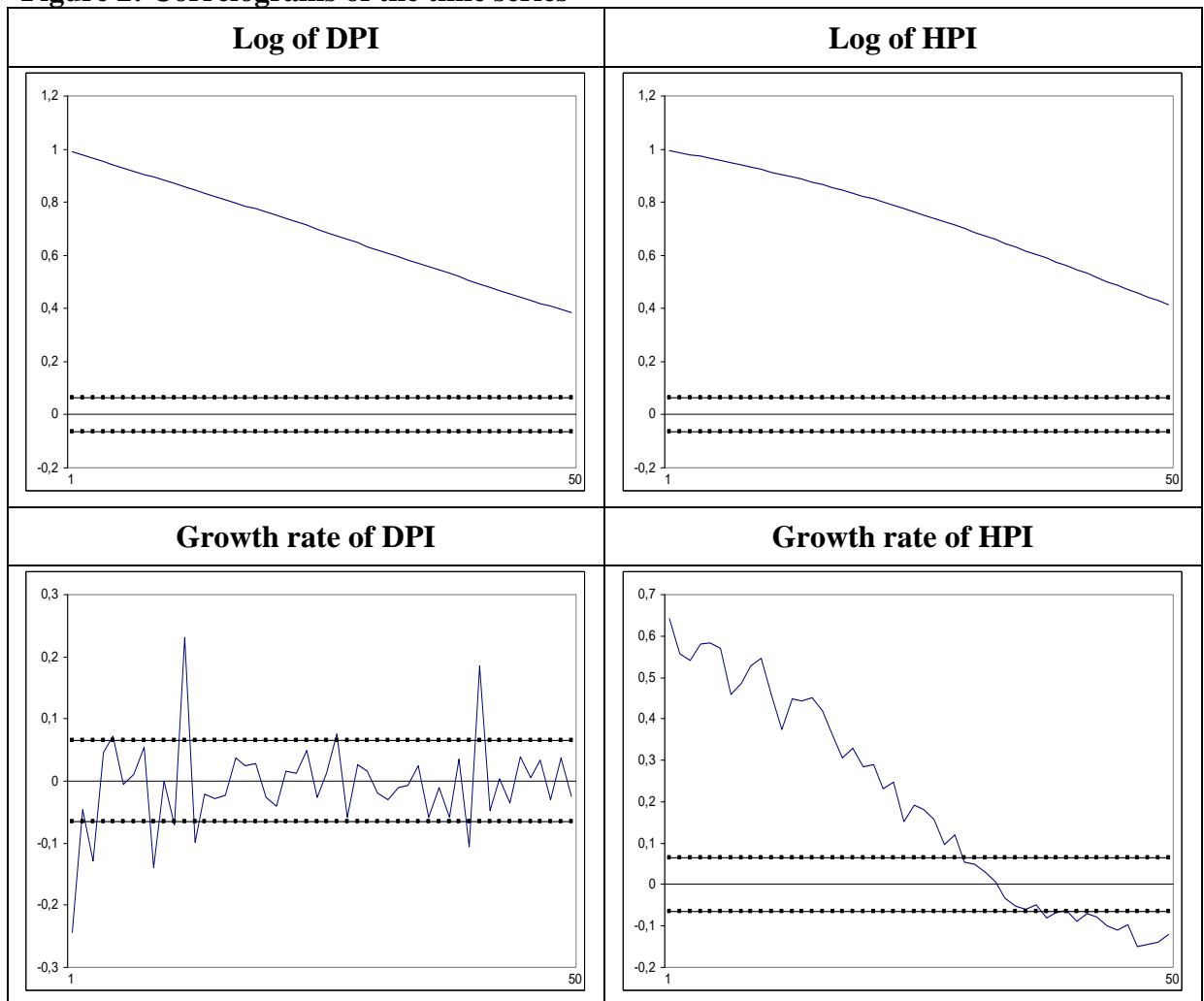
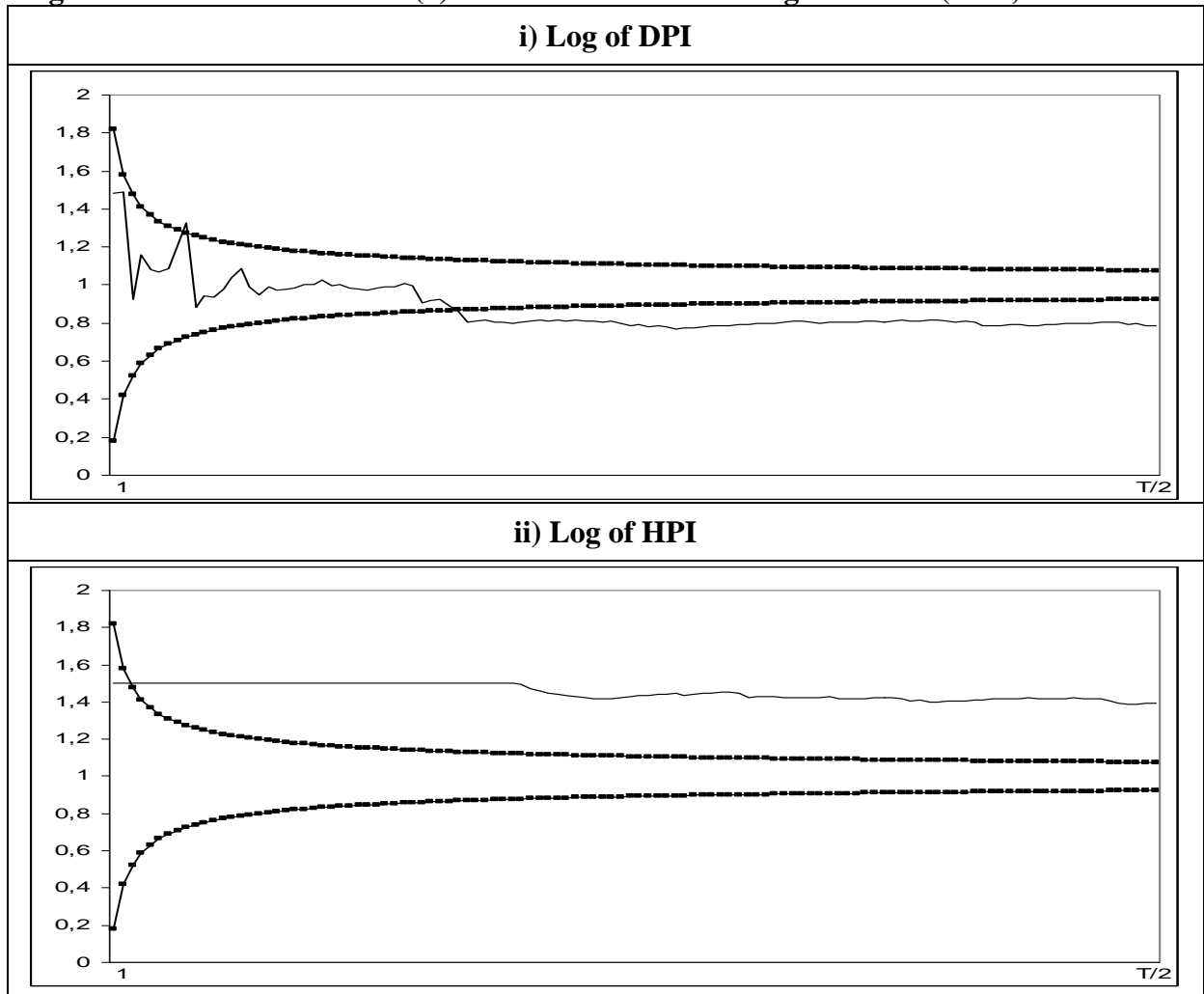


Figure 2: Correlograms of the time series



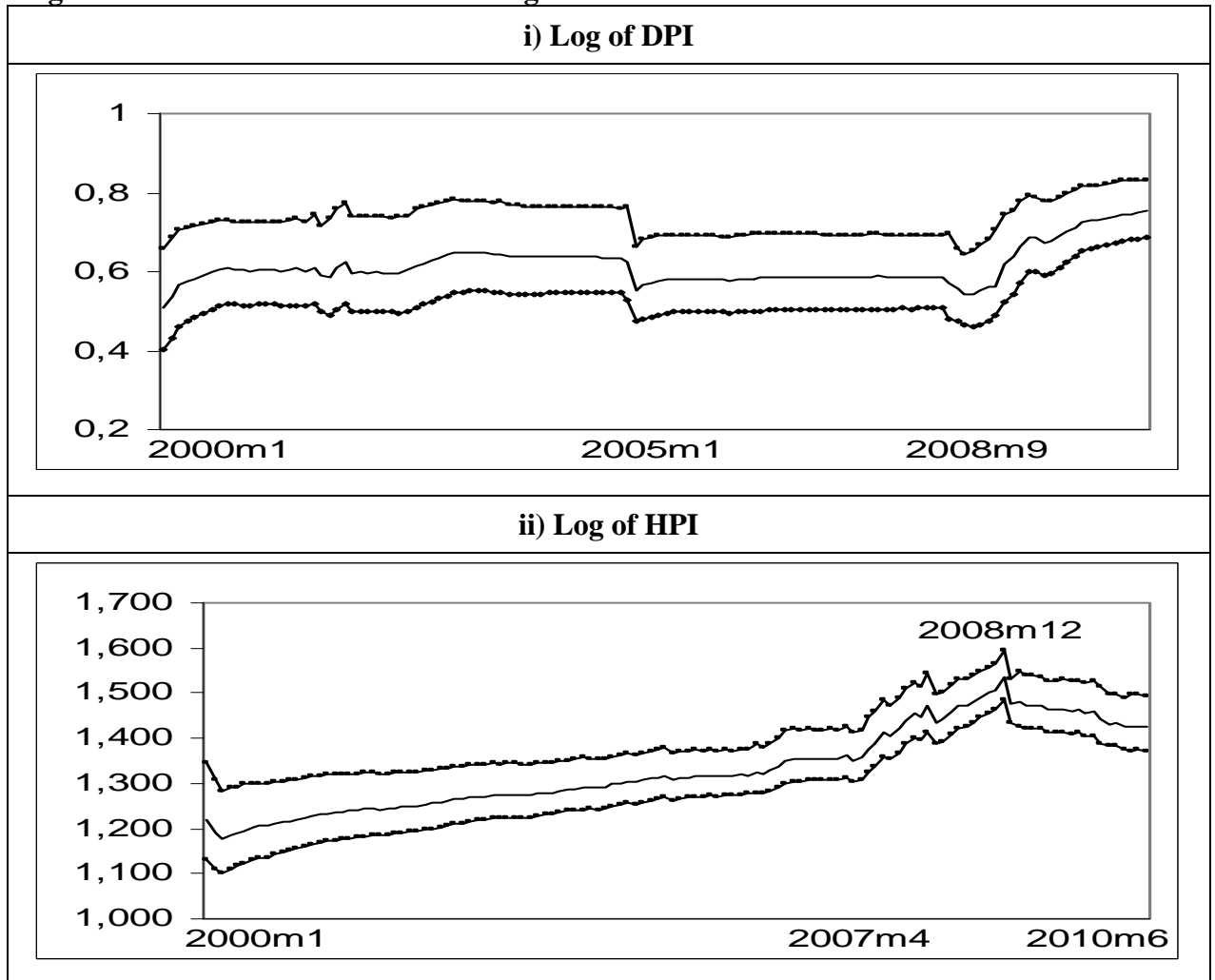
The thick lines correspond to the 95% confidence bands for the null hypothesis of no autocorrelation.

Figure 3: Estimates of d and $I(1)$ confidence intervals using Robinson (1995)



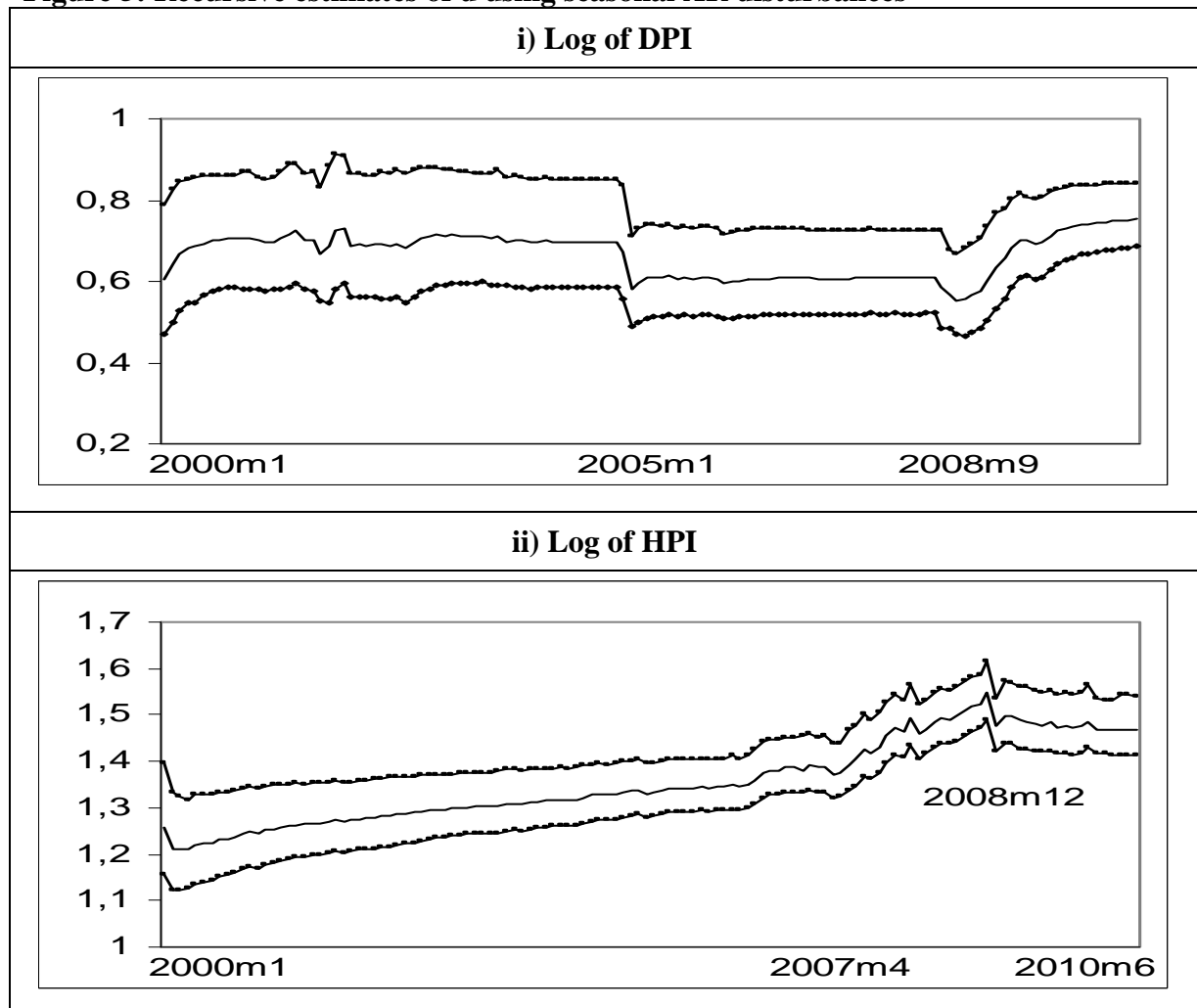
The horizontal axis reports the bandwidth parameter and the vertical one the estimated value of d . The thick lines correspond to the 95% confidence bands for the $I(1)$ null hypothesis.

Figure 4: Recursive estimates of d using white noise disturbances



The thick lines correspond to the 95% confidence bands.

Figure 5: Recursive estimates of d using seasonal AR disturbances



The thick lines correspond to the 95% confidence bands.

Table 1: Estimates of d and 95% confidence bands for each series

a) Log of DPI			
	No regressors	An intercept	A linear trend
White noise	0.983 (0.906, 1.083)	0.831 (0.804, 0.871)	0.752 (0.689, 0.833)
AR (1)	1.382 (1.247, 1.565)	0.873 (0.834, 0.942)	0.808 (0.709, 0.929)
Bloomfield (1)	0.963 (0.831, 1.128)	0.873 (0.830, 0.965)	0.840 (0.735, 0.972)
Seasonal AR (1)	0.978 (0.882, 1.084)	0.821 (0.791, 0.868)	0.754 (0.686, 0.842)
a) Log of HPI			
	No regressors	An intercept	A linear trend
White noise	0.980 (0.903, 1.082)	1.427 (1.375, 1.496)	1.424 (1.372, 1.493)
AR (1)	1.382 (1.247, 1.566)	1.475 (1.410, 1.559)	1.471 (1.406, 1.556)
Bloomfield (1)	0.961 (0.829, 1.135)	1.492 (1.414, 1.591)	1.483 (1.405, 1.581)
Seasonal AR (1)	0.978 (0.882, 1.082)	1.472 (1.415, 1.543)	1.469 (1.413, 1.540)

The estimates of d are based on the Whittle function in the frequency domain. The values in parentheses are the non-rejection values of d at the 95% level using Robinson's (1994) approach.

CESifo Working Paper Series

for full list see www.cesifo-group.org/wp

(address: Poschingerstr. 5, 81679 Munich, Germany, office@cesifo.de)

- 3144 Philip E. Graves, Benefit-Cost Analysis of Environmental Projects: A Plethora of Systematic Biases, August 2010
- 3145 Sabrina Di Addario and Daniela Vuri, Entrepreneurship and Market Size. The Case of Young College Graduates in Italy, August 2010
- 3146 Shoshana Amyra Grossbard and Alfredo Marvão Pereira, Will Women Save more than Men? A Theoretical Model of Savings and Marriage, August 2010
- 3147 Jarko Fidrmuc, Time-Varying Exchange Rate Basket in China from 2005 to 2009, August 2010
- 3148 Ilja Neustadt and Peter Zweifel, Is the Welfare State Sustainable? Experimental Evidence on Citizens' Preferences for Redistribution, August 2010
- 3149 Marcus Dittrich and Andreas Knabe, Wage and Employment Effects of Non-Binding Minimum Wages, August 2010
- 3150 Shutao Cao, Enchuan Shao and Pedro Silos, Fixed-Term and Permanent Employment Contracts: Theory and Evidence, August 2010
- 3151 Ludger Woessmann, Cross-Country Evidence on Teacher Performance Pay, August 2010
- 3152 Lorenzo C. G. Pozzi, Casper G. de Vries and Jorn Zenhorst, World Equity Premium Based Risk Aversion Estimates, August 2010
- 3153 Volker Grossmann, Thomas M. Steger and Timo Trimborn, Dynamically Optimal R&D Subsidization, August 2010
- 3154 Alexander Haupt, Tim Krieger and Thomas Lange, A Note on Brain Gain and Brain Drain: Permanent Migration and Education Policy, August 2010
- 3155 António Afonso and Christophe Rault, Long-run Determinants of Sovereign Yields, August 2010
- 3156 Franziska Tausch, Jan Potters and Arno Riedl, Preferences for Redistribution and Pensions. What can we Learn from Experiments?, August 2010
- 3157 Martin Kolmar and Andreas Wagener, Inefficient Group Organization as Optimal Adaption to Dominant Environments, August 2010
- 3158 Kai Carstensen, Klaus Wohlrabe and Christina Ziegler, Predictive Ability of Business Cycle Indicators under Test: A Case Study for the Euro Area Industrial Production, August 2010

- 3159 Horst Rottmann and Timo Wollmershäuser, A Micro Data Approach to the Identification of Credit Crunches, August 2010
- 3160 Philip E. Graves, Appropriate Fiscal Policy over the Business Cycle: Proper Stimulus Policies Can Work, August 2010
- 3161 Michael Binder and Marcel Bluhm, On the Conditional Effects of IMF Program Participation on Output Growth, August 2010
- 3162 Michael Binder, Qianying Chen, and Xuan Zhang, On the Effects of Monetary Policy Shocks on Exchange Rates, August 2010
- 3163 Felix J. Bierbrauer, On the Optimality of Optimal Income Taxation, August 2010
- 3164 Nikolaus Wolf, Europe's Great Depression – Coordination Failure after the First World War, September 2010
- 3165 Dan Kovenock and Brian Roberson, Conflicts with Multiple Battlefields, September 2010
- 3166 Jean-Pierre Ponsard and Catherine Thomas, Capacity Investment under Demand Uncertainty. An Empirical Study of the US Cement Industry, 1994-2006, September 2010
- 3167 Jørgen Juel Andersen, Jon H. Fiva and Gisle James Natvik, Voting when the Stakes are High, September 2010
- 3168 Michael Hoel, Is there a Green Paradox?, September 2010
- 3169 Scott Alan Carson, Nineteenth Century US African-American and White Female Statures: Insight from US Prison Records, September 2010
- 3170 Gil S. Epstein, Yosef Mealem and Shmuel Nitzan, Political Culture and Discrimination in Contests, September 2010
- 3171 Sara Fisher Ellison, Jeffrey Greenbaum and Wallace P. Mullin, Diversity, Social Goods Provision, and Performance in the Firm, September 2010
- 3172 Silvia Dominguez-Martinez, Randolph Sloof and Ferdinand von Siemens, Monitoring your Friends, not your Foes: Strategic Ignorance and the Delegation of Real Authority, September 2010
- 3173 Marcus Dittrich and Beate Schirwitz, Union Membership and Employment Dynamics: A Note, September 2010
- 3174 Francesco Daveri, Paolo Manasse and Danila Serra, The Twin Effects of Globalization – Evidence from a Sample of Indian Manufacturing Firms, September 2010
- 3175 Florian Blöchl, Fabian J. Theis, Fernando Vega-Redondo and Eric O'N. Fisher, Which Sectors of a Modern Economy are most Central?, September 2010

- 3176 Dag Morten Dalen, Marilena Locatelli and Steinar Strøm, Longitudinal Analysis of Generic Substitution, September 2010
- 3177 Armin Falk, Stephan Meier and Christian Zehnder, Did we Overestimate the Role of Social Preferences? The Case of Self-Selected Student Samples, September 2010
- 3178 Christian Fahrholz and Cezary Wójcik, The Bail-Out! Positive Political Economics of Greek-type Crises in the EMU, September 2010
- 3179 Klaus Abberger and Wolfgang Nierhaus, The Ifo Business Cycle Clock: Circular Correlation with the Real GDP, September 2010
- 3180 Walter Krämer and Gerhard Arminger, “True Believers” or Numerical Terrorism at the Nuclear Power Plant, September 2010
- 3181 Bernard M.S. Van Praag, Dmitri Romanov and Ada Ferrer-i-Carbonell, Happiness and Financial Satisfaction in Israel. Effects of Religiosity, Ethnicity, and War, September 2010
- 3182 Dimitrios Koumparoulis and Paul De Grauwe, Public Capital, Employment and Productivity: An Empirical Investigation for Greece, September 2010
- 3183 John Whalley and Tanmaya Shekhar, The Rapidly Deepening India-China Economic Relationship, September 2010
- 3184 Andreas Schäfer and Thomas Steger, History, Expectations, and Public Policy: Economic Development in Eastern Germany, September 2010
- 3185 Thomas Eichner and Marco Runkel, Subsidizing Renewable Energy under Capital Mobility, September 2010
- 3186 Konstantinos Angelopoulos and James Malley, Fear of Model Misspecification and the Robustness Premium, September 2010
- 3187 Philip E. Graves, A Note on the Design of Experiments Involving Public Goods, September 2010
- 3188 Glenn Ellison, How does the Market Use Citation Data? The Hirsch Index in Economics, September 2010
- 3189 Barbara Hanel and Regina T. Riphahn, The Employment of Mothers – Recent Developments and their Determinants in East and West Germany, September 2010
- 3190 Alexander Haupt and Silke Uebelmesser, Integration, Mobility, and Human Capital Formation, September 2010
- 3191 Vincenzo Galasso and Paola Profeta, When the State Mirrors the Family: The Design of Pension Systems, September 2010

- 3192 Stéphane Zuber and Geir B. Asheim, Justifying Social Discounting: The Rank-Discounted Utilitarian Approach, September 2010
- 3193 Alexander Kemnitz, Educational Federalism and the Quality Effects of Tuition Fees, September 2010
- 3194 Claudia M. Buch, Sandra Eickmeier and Esteban Prieto, Macroeconomic Factors and Micro-Level Bank Risk, September 2010
- 3195 May Elsayyad and Kai A. Konrad, Fighting Multiple Tax Havens, September 2010
- 3196 Laszlo Goerke and Markus Pannenberg, Trade Union Membership and Dismissals, September 2010
- 3197 Ferdinand Mittermaier and Johannes Rincke, Do Countries Compensate Firms for International Wage Differentials?, September 2010
- 3198 John Boyd, Gianni De Nicoló and Abu M. Jalal, Bank Competition, Asset Allocations and Risk of Failure: An Empirical Investigation, September 2010
- 3199 Guido Heineck and Bernd Süßmuth, A Different Look at Lenin's Legacy: Trust, Risk, Fairness and Cooperativeness in the two Germanies, September 2010
- 3200 Ingvild Almås, Tarjei Havnes and Magne Mogstad, Baby Booming Inequality? Demographic Change and Earnings Inequality in Norway, 1967-2000, October 2010
- 3201 Thomas Aronsson and Sören Blomquist, The Standard Deviation of Life-Length, Retirement Incentives, and Optimal Pension Design, October 2010
- 3202 Thorvaldur Gylfason and Eduard Hochreiter, Growing Together: Croatia and Latvia, October 2010
- 3203 Ken Burdett and Melvyn Coles, Tenure and Experience Effects on Wages: A Theory, October 2010
- 3204 Wendy Carlin, Good Institutions are not enough: Ongoing Challenges of East German Development, October 2010
- 3205 Tobias König and Andreas Wagener, Tax Structure and Government Expenditures under Tax Equity Norms, October 2010
- 3206 Daniel W. Sacks, Betsey Stevenson and Justin Wolfers, Subjective Well-Being, Income, Economic Development and Growth, October 2010
- 3207 Mario Larch and Wolfgang Lechthaler, Why "Buy American" is a Bad Idea but Politicians still Like it, October 2010
- 3208 Guglielmo Maria Caporale and Luis A. Gil-Alana, US Disposable Personal Income and Housing Price Index: A Fractional Integration Analysis, October 2010