

Rothbauer, Julia; Sieg, Gernot

**Working Paper**

## Quality standards for passenger trains: Political majorities and environmental costs

Economics Department Working Paper Series, No. 8

**Provided in Cooperation with:**

Technische Universität Braunschweig, Economics Department

*Suggested Citation:* Rothbauer, Julia; Sieg, Gernot (2010) : Quality standards for passenger trains: Political majorities and environmental costs, Economics Department Working Paper Series, No. 8, Technische Universität Braunschweig, Institut für Volkswirtschaftslehre, Braunschweig

This Version is available at:

<https://hdl.handle.net/10419/51318>

**Standard-Nutzungsbedingungen:**

Die Dokumente auf EconStor dürfen zu eigenen wissenschaftlichen Zwecken und zum Privatgebrauch gespeichert und kopiert werden.

Sie dürfen die Dokumente nicht für öffentliche oder kommerzielle Zwecke vervielfältigen, öffentlich ausstellen, öffentlich zugänglich machen, vertreiben oder anderweitig nutzen.

Sofern die Verfasser die Dokumente unter Open-Content-Lizenzen (insbesondere CC-Lizenzen) zur Verfügung gestellt haben sollten, gelten abweichend von diesen Nutzungsbedingungen die in der dort genannten Lizenz gewährten Nutzungsrechte.

**Terms of use:**

*Documents in EconStor may be saved and copied for your personal and scholarly purposes.*

*You are not to copy documents for public or commercial purposes, to exhibit the documents publicly, to make them publicly available on the internet, or to distribute or otherwise use the documents in public.*

*If the documents have been made available under an Open Content Licence (especially Creative Commons Licences), you may exercise further usage rights as specified in the indicated licence.*



**TECHNISCHE UNIVERSITÄT  
CAROLO-WILHELMINA  
ZU BRAUNSCHWEIG**

**ECONOMICS DEPARTMENT  
WORKING PAPER SERIES  
NO 08/ March 2010**

**„Quality standards for  
passenger trains:  
Political majorities and  
environmental costs“**

**by Julia Rothbauer and  
Gernot Sieg,  
March 2010**

© Technische Universität Braunschweig,  
Economics Department, 2010

**Address**

Institut für Volkswirtschaftslehre  
Spielmannstraße 9  
D38106 Braunschweig, Germany

**Telephone**

+49 531 391 2578

**Website**

<http://www.tu-braunschweig.de/vwl>

**Fax**

+49 531 391 2593

All rights reserved.

Any reproduction, publication and reprint in the form of a different publication, whether printed or produced electronically, in whole or in part, is permitted only with the explicit written authorisation of the TU Braunschweig, Economics Department, or the author(s).

The views expressed in this paper do not necessarily reflect those of the Economics Department or the TU Braunschweig.

The Working Paper Series seeks to disseminate economic research work by the TU Braunschweig Economics Department's staff and visitors. Papers by researchers not affiliated with the TU Braunschweig Economics Department may also be considered for publication to the extent that they have been presented at research seminars/workshops organised by the Department.

The working papers published in the Series constitute work in progress circulated to stimulate discussion and critical comments. Views expressed represent exclusively the authors' own opinions.

The Series is managed by the Director of the Economics Department, and an Editorial Board oversees the process of publication.

# Quality standards for passenger trains: Political majorities and environmental costs

Julia Rothbauer\*

Gernot Sieg\*

March 18, 2010

## Abstract

This study analyzes the minimum quality standard set by the European Union (EU) through Regulation 1371/2007 of Rail Passengers' Rights and Obligations. A welfare maximizing quality standard raises quality and consumer satisfaction, but does not improve the modal split of rail transport. A minimum quality standard determined by political majorities may or may not increase welfare. However, all binding standards induce travelers to switch to transport modes with higher anthropogenic greenhouse gas emissions.

Keywords: regulation; minimum quality standards; median; rail

JEL: L51; L92; D72

## 1 Introduction

On the 3 December, 2007 a regulation on rail passengers' rights and obligations was published in the Official Journal of the European Union. The regulation contained rules regarding delays, missed trains, and train cancellations, to improve the quality. For example, the minimal compensation for a delay of 60 to 119 minutes was set at 25% of the ticket price. All quality regulations had to be implemented by Member States till the 3 December 2009. The objective mentioned in the preamble was "to help increase the share of rail transport in relation to other modes of transport" (European Union, 2007, p. 14). The transportation sector is

---

\*TU Braunschweig, Economics Department, Spielmannstr. 9, 38106 Braunschweig, Germany

one of the main sources of anthropogenic greenhouse gas emissions and an increased modal split of the railway sector may reduce  $CO_2$  emissions. A sample-rail-trip from Berlin to Paris produces 33 kg carbon dioxide per passenger compared to 115.4 kg per passenger for the same trip by car, or 203.5 kg by air.<sup>1</sup> However, a consumer survey for the European Commission reveals that consumers are not satisfied with rail transport. Rail is the only transport mode by which less than 50% of the respondents are satisfied. Furthermore, about 25% of the respondents have experienced problems with this service in the last 12 months. In contrast, only about 15% of the respondents have had problems with new motor vehicles or air transport (Eurostat, 2009). Therefore, it seems obvious that a quality regulation is an appropriate policy to increase the modal share of rail transport.

It is well known that a monopolist may undersupply quality. In most EU-member countries the market for rail passenger transport is still highly concentrated. Companies, aside from the incumbent, that is, the former monopolist, have hardly more than 10% of the market share (European Commission, 2009). For a given quantity of supply, the monopolist undersupplies quality if the average valuation of quality is higher than the valuation of the marginal consumer, because the welfare optimum is given by averages, but prices signal marginal valuations (Spence, 1975; Sheshinski, 1976). Therefore, the market power of incumbents is likely to be the cause of low satisfaction and a quality regulation might solve this problem.

There are many dimensions of quality in rail transport (Nathanail, 2008): system safety, cleanliness, passenger comfort, servicing, such as, frequency of service and speed, passenger information, and itinerary accuracy. Furthermore, consumers have different preferences in this multidimensional quality space (Lyons et al., 2007; Teichert et al., 2008; Bhadra, 2009). Punctuality is more important for short distance than for long distance travel. The willingness to pay for speed increases with the opportunity costs of time and therefore business travelers have a higher willingness than travelers visiting friends and relatives or holiday travelers. Commuters value high frequency and punctuality much more than travelers visiting friends and relatives or holiday travelers. To summarize, the regulation of one dimension of quality, itinerary accuracy, affects different types of consumers differently.

The effects of minimum quality standards when consumers are heterogeneous are complex (Sappington, 2005). Besanko et al. (1987) show that a monopolist that sells in a market in which consumers differ in their willingness to pay for quality will distort and enhance the range of products offered for sale. A minimum quality standard will result in the exclusion of consumers from the market, relative to the unregulated equilibrium, whereas, in general the effect on social welfare

---

<sup>1</sup>Values according to [www.ecopassenger.org](http://www.ecopassenger.org) where emissions for individual travel routes are computable.

is ambiguous. Kluger (1989) shows that a minimum quality standard alters the entire price and quality schedule offered by a monopolist. However, there are many reasons why transport firms do not offer a full range of punctuality qualities, except one. This article shows that exclusion of consumers occurs even if the monopolist has to offer only one type of quality. Furthermore, the effects of the standard on social welfare are determined in our article. Leland (1979) considers a market with asymmetric information concerning quality. In public transport by train there may be no information about the expected arrival time, but there is no systematic asymmetric information about punctuality. Most of the data is available through the net and consumers do know what quality a rail firm offers. Besanko et al. (1988) consider a monopolist who is not able to observe the consumers' preferences for product quality and show that a rate of return regulation may counteract the quality distortion. However, in the European Union (EU) we do not have a regulation for rail transport firms, but we have a process of transforming state-owned firms to profit-oriented firms. We therefore consider profit maximizing firms facing minimum quality standards. Sibly (2009) raises a question similar to our problem. However, his result states that if there are two types of customers for public transport, the quality of the public transport system is downwardly skewed, which is the starting point of our analysis.

This article shows that even though there is an undersupply of quality in the market for rail transport and quality regulation raises quality and consumer satisfaction, the resulting policy does not improve the modal split. Furthermore, if the minimum level of quality is not the result of a benevolent welfare maximizing dictator, but the result of pressure group politics, the regulation is only coincidentally welfare optimal. The outcome depends on the power of railway companies on the one side and consumer pressure groups on the other side. We show that in case railway companies have little influence on the decision-making process and democratic ballots in the group of rail users solely determine the quality regulation, then welfare decreases. The reason for these non-intended perverse effects is that even though all consumers prefer a higher quality the willingness to pay for quality differs between consumers. Whereas the monopolist uses the market power and the higher quality to increase the price, some consumers do not think the rise in quality justifies the higher price, and therefore, quit using the train. Furthermore, non-rail users do not even vote if the ballot is about regulating rail transport. Voter abstinence aggravates quality distortion. A quality regulation will not increase the mode share of rail transport.

## 2 The model

Following Besanko et al. (1987), we assume that railway transport can be produced in a continuous array of quality levels, or punctuality, denoted by  $q$ , where  $q \in [0, \infty)$ . There are constant unit costs  $C(q)$  with  $C(0) = 0$ ,  $C'(q) > 0$ , and  $C'' > 0$ . For simplicity:

$$C(q) = \beta \cdot q^2,$$

with  $\beta > 0$ , similar to Lambertini (2006, p.11). The monopolist can offer only one price / quality combination.<sup>2</sup>

Every consumer travels at most once per period of time and the number of consumers is normalized to one. The consumer's utility is approximated by:  $U = y + V(q, \theta)$  with  $V'(q) > 0$  and  $V'' < 0$ , where  $y$  is a composite commodity and  $V$  is the total willingness to pay for quality (see Mussa and Rosen, 1978).

We use  $\theta$  as the parameter capturing the consumers' heterogenous preferences for quality. There are travelers visiting friends and relatives and holiday travelers, which have a small  $\theta$ , because they have weak preferences for punctuality. However, there are also commuters, who value punctuality much more than travelers visiting friends and relatives or holiday travelers. These commuters have a high  $\theta$ . Business travelers have a medium preference for punctuality, because speed is more important. Therefore, they are represented by a medium  $\theta$ . In our model  $\theta$  is equally distributed over an interval  $[\theta_0, \theta_1]$ . To model the diversity of consumers we assume  $\theta_1/\theta_0 > (0.1(7 - 3\sqrt{5}))^{-1} =: \alpha_W^{-1}$ , which is trivially fulfilled for  $\theta_0 = 0$  and guarantees a demand smaller than one.

For every type of consumer willingness to pay for quality  $V$  increases as quality increases, but with a diminishing rate. Furthermore, we assume that the total and marginal willingness to pay for quality increases in the taste parameter. A simple form to model these preferences is

$$V(q, \theta) = \sqrt{\theta \cdot q}$$

A consumer of taste type  $\theta$  buys if  $\sqrt{\theta q} \geq p$ . The consumer  $\tilde{\theta} = p^2/q$  is indifferent to buying. Consequently, all consumers  $\tilde{\theta} \leq \theta \leq \theta_1$  buy, and therefore, demand equals

$$D(p, q) = \frac{\theta_1 - \tilde{\theta}}{\theta_1 - \theta_0} = \frac{\theta_1 - p^2/q}{\theta_1 - \theta_0},$$

if  $p^2/q < \theta_1$  and zero otherwise. The demand function fulfills the law of demand. With regard to quality, the demand increases as quality increases. Therefore, ignoring any other reactions a quality increase through a regulation increases the

---

<sup>2</sup> $\beta$  is the costs per passenger unit at quality normalized to one and we assume constant returns to scale, i.e. constant unit costs on the technical side independent of quality.

share of rail transport, as indicated in the EU regulation. Note also that this demand function is nonlinear with respect to price. If demand was linear a monopolist would distort the price only because nonlinearity is a necessary condition for quality distortion (Spence, 1975).

## 2.1 Welfare optimum

As a benchmark the combination of price and quality (Point  $W$  in Figure 1) that maximizes the sum of consumer surplus and profits equals

$$q_W = \alpha_W^{1/3} \cdot \frac{\theta_1^{1/3}}{\beta^{2/3}}, \quad p_W = \alpha_W^{2/3} \cdot \frac{\theta_1^{2/3}}{\beta^{1/3}}, \quad \text{and} \quad x_W = (1 - \alpha_W) \cdot \frac{\theta_1}{\theta_1 - \theta_0}.$$

## 2.2 Unregulated Monopoly

As the appendix shows, the unregulated monopolist (Point  $M$  in Figure 1) maximizes profits by

$$q_M = \frac{\theta_1^{1/3}}{2 \cdot 5^{1/3} \cdot \beta^{2/3}}, \quad p_M = \frac{\theta_1^{2/3}}{5^{2/3} \cdot \beta^{1/3}}, \quad \text{and} \quad x_M = 0.6 \cdot \frac{\theta_1}{\theta_1 - \theta_0}.$$

The quality provided by the monopolist is c.p. too low because

$$\frac{\partial W}{\partial q} \Big|_{p=p_M, q=q_M} = \frac{25\sqrt{2} \cdot 5^{1/6} \beta^{1/3} \theta_1^{4/3} - 4 \cdot 5^{2/3} \beta^{1/3} \theta_1^{4/3}}{75(\theta_1 - \theta_0)} > 0.$$

The monopolist undersupplies quality because the quantity restriction is severe (Spence, 1975). A simple comparison of the monopolist's quality and the welfare maximizing quality could induce the ambition to increase quality in order to improve welfare.

## 3 Regulation of quality

Although there are a variety of possible modes of regulation, this article analyzes the minimum quality standards as set by the European Union. Therefore, we consider only the case where the policy maker decides the quality and the monopolist then decides on the optimal price. Therefore, the policy maker acts as a Stackelberg-leader.

The monopolists reaction function is given by

$$p(q) = \frac{1}{3} \cdot (\beta q^2 + \sqrt{\beta^2 q^4 + 3q\theta_1})$$



with

$$\frac{dp}{dq} = \frac{1}{3} \left( 2\beta q + \frac{4\beta^2 q^3 + 3\theta_1}{2 \cdot \sqrt{\beta^2 q^4 + 3q\theta_1}} \right) > 0.$$

Anticipating the increase in price on quality standards, the regulator maximizes welfare by setting the quality to

$$q_R \approx 0.298514 \cdot \frac{\theta_1^{1/3}}{\beta^{2/3}} > q_M.$$

As the regulator only sets the quality, but not the price, the monopolist is able to increase the price to

$$p_R \approx 0.346542 \cdot \frac{\theta_1^{2/3}}{\beta^{1/3}} > p_M.$$

The price increase in turn leads to an exclusion of market participants:

$$x_R \approx 0.597702 \cdot \frac{\theta_1}{\theta_1 - \theta_0} < x_M.$$

To summarize, a welfare maximizing regulation enhances quality and improves welfare (Point *R* in Figure 1). However, the regulation decreases the modal share of the rail sector and is no measure to reduce greenhouse gas emissions if travelers use cars or planes instead.

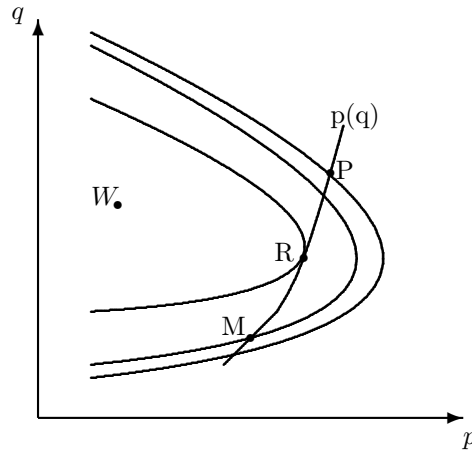


Figure 1: Prices and qualities in different regulatory regimes

## 4 Political Regulation

In a two party system the quality regulation policies of the parties converge to the policy preferred by the median voter, if every citizen votes, because preferences are single peaked (Black, 1948). The median voter is

$$MV = \frac{\theta_1 + \theta_0}{2}.$$

The indirect utility of the median voter is given by

$$NU_{MV} = \frac{1}{3}(-\beta q^2 - \sqrt{\beta^2 q^4 + 3q\theta_1}) + \frac{\sqrt{q(\theta_1 + \theta_0)}}{\sqrt{2}} + y$$

and

$$\frac{\partial NU_{MV}}{\partial q} \Big|_{q=q_M} = \frac{\beta^{1/3}(-28 \cdot \sqrt{5}\sqrt{\theta_1} + 55\sqrt{\theta_1 + \theta_0})}{22 \cdot 5^{5/6}\theta_1^{1/6}},$$

is negative because  $\theta_1/\theta_0 > 1/\alpha_W$ . In a ballot about quality regulation, a maximum quality standard (and not a minimum quality standard) outpolls the unregulated monopoly. Quality reduction results in a lower price, and voters with a low willingness to pay for quality, which are the majority, benefit.

However, the European Union did not decrease the quality, but increased it. There are many reasons as to why the median voter's preferred outcome is not the outcome of the political process (Aranson and Ordeshook, 1981), and abstention from voting (Hinich and Ordeshook, 1969) is most important in the case of passenger transport by rail. The regulation of quality of passenger transport effects consumers differently. Some consumers obtain a higher net-surplus through the regulation. These are the consumers with high willingness to pay for quality, such as business travelers, who vote in favor of the regulation. Consumers with low willingness to pay for quality, such as holiday travelers and travelers visiting friends and relatives, oppose the regulation. By establishing the regulation, a part of these consumers are excluded from the market and are thus losing consumer surplus. Furthermore, some consumers do not leave the market, but still have a loss of surplus. Finally, there are potential consumers who do not even buy in the low quality unregulated monopoly. As they do not receive any consumer surplus they are indifferent to the unregulated monopoly and minimum quality standards. We assume, that these voters have no interest in the decision-making process and abstain from the ballot. The effect is called abstention from indifference (Hinich and Ordeshook, 1969).

We assume the status quo of the non-regulated market. The median of the current users increases his net-utility by claiming a higher quality. A political agent has to follow this claim for higher quality in order to maximize his vote

share by increasing the minimum standard of quality. As a result the monopolist increases the price and even more consumers leave the market, changing the group of remaining consumers. As a result, the median of the consumer group shifts upward. As long as the median, after a quality increase, prefers an even higher quality, a politician can improve his vote share by increasing the quality.

Consumers who do not use rail transport abstain from a ballot about quality regulation in the rail sector. Furthermore, in the ballot only the votes cast are valid, and therefore, the vote share is relevant. This assumption about voting abstinence results in a quality  $q_P$  that cannot be outvoted by a different minimum quality proposal. In the equilibrium, no quality change increases the share of voters preferring the changed quality even though the change of consumers due to the quality change is anticipated.

Two conditions determine the equilibrium  $(q_P, \theta_P)$ . First, for a given median  $\theta^M$  the median voter theorem holds, which means the ballot winning quality maximizes the net utility  $NU$  of the median voter:

$$NU_{\theta^M}(q_P) \geq NU_{\theta^M}(q) \forall q.$$

Second,  $\theta_P$  has to be the median of consumers who travel by train if the quality is  $q_P$ .

To get the median voter for a given quality  $q$  we use the net utility of consumer  $\theta$  for a given  $q$ . That is,

$$NU_{\theta}(q) = \sqrt{\theta \cdot q} - \frac{1}{3}(\beta q^2 + \sqrt{\beta^2 q^4 + 3q\theta_1}).$$

By setting  $NU_{\theta}(q) = 0$  we get the marginal consumer as a function of  $q$ :

$$\theta(q) = \frac{1}{9}(2\beta^2 q^3 + 3\theta_1 + 2\beta q \sqrt{\beta^2 q^4 + 3q\theta_1}).$$

Therefore, for a given quality  $q$  the median of travelers by train is

$$\theta^M(q) = \frac{\theta_1 + \theta(q)}{2},$$

and therefore the median voter for the ballot winning quality is

$$\theta_P = \frac{\theta_1 + \theta(q_P)}{2}$$

receiving a net utility of

$$NU_{\theta_P}(q) = \sqrt{\theta_P \cdot q} - \frac{1}{3}(\beta q^2 + \sqrt{\beta^2 q^4 + 3q\theta_1}).$$

Because  $q_P$  maximizes  $NU_{\theta_P}(q)$  we use the first order condition to specify

$$q_P \approx 0.319319 \cdot \frac{\theta_1^{1/3}}{\beta^{2/3}}, \quad p_P = 0.362005 \cdot \frac{\theta_1^{2/3}}{\beta^{1/3}} > p_R, \quad \text{and} \quad x_P = 0.589603 \cdot \frac{\theta_1}{\theta_1 - \theta_0}.$$

Welfare decreases to

$$W_P = \frac{0.21756 \cdot \theta_1^{5/3}}{\beta^{1/3}(\theta_1 - \theta_0)} < W_M.$$

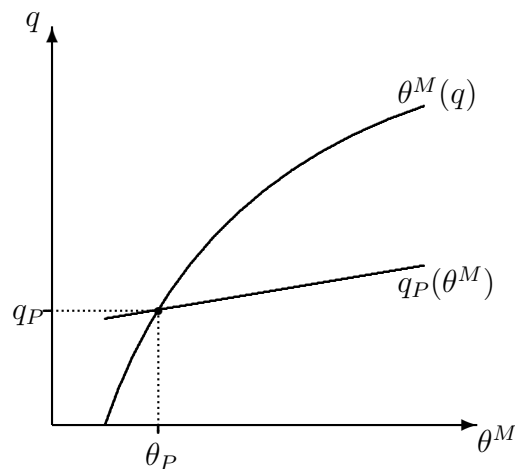


Figure 2: Political Equilibrium

The quality demanded by the median of rail travelers is larger than the welfare maximizing minimum quality standard as well as the quality offered by the unregulated monopolist. Furthermore, a regulation following the demands of rail travelers decreases welfare even when compared to the unregulated monopoly. Last but not least, this type of regulation decreases the modal share of the rail sector and is the worst policy with regard to the greenhouse gas emissions.

Stigler (1971) and Peltzman (1976) argue that regulation is not induced by a benevolent welfare maximizing decision maker or by the median of voters, but by pressure groups. Following Peltzman (1976) we consider two groups struggling to influence the regulator, producers, that is, the railway company, and rail travelers. Depending on the influence, the resulting regulatory policy is either  $q_M$ , if only the monopolist is important, or  $q_P$ , if only voters count. However, in reality both groups are important and the regulator chooses a quality from  $[q_M, q_P]$ , such that the marginal votes lost from consumers because of a lower quality are outweighed by the votes (arguably indirectly) won from the railway company. Note that

this implies that the competition of pressure groups may also lead to the welfare optimal regulatory minimum quality standard  $q_R$  (Becker, 1983).

To summarize, following Peltzman (1976), the decision-making process in the European Union results in a minimum quality standard that is somewhere in  $[q_M, q_P]$ , and may or may not increase welfare. However, if there is no price or rate of return regulation, a binding minimum standard of quality causes the monopolist to raise prices, inducing consumers to quit traveling by rail. The substitution of the ecological preferred transport mode by modes with higher emissions counteracts the aim of the regulator to fight anthropogenic greenhouse gas emissions.

## 5 Conclusion

Within the scope of implementation of the EU Regulation of Passenger Rights the member states have great latitude. On the one hand, the member states may postpone parts of the regulation, especially the minimum quality standard for itinerary accuracy, for up to 15 years. On the other hand, minimum standards are not binding and member states are free to increase quality beyond the regulation. In fact, passenger rights vary throughout the EU. According to our model this variation of standards is a result of varying proportions of power among the group of rail passengers and the rail monopolist.

Empirical research about the relation of pressure groups and the regulation in the EU member states is necessary to test our hypothesis. As a benchmark we refer to Switzerland, which is not part of the EU and therefore not affected by the regulation. For a direct democracy our model predicts a small quality standard. Switzerland's compensation payments are in line with the EU minimum requirements.

Although the welfare effect of the EU regulation is ambiguous, the regulatory minimum quality standard decreases the share of rail transport in the model split. Regulation of the monopolist's pricing policy can prevent this unintentional effect if the regulated price does not increase, even if the quality increases. It is well known that rate of return and price cap regulations can deter the railway company from disproportionate price increases. Spence (1975) shows that a rate of return regulation improves the quality provided by a monopolist if capital is a factor of production. However, if some part of the quality is labor-using, the rate of return regulation diminishes it. In a price-regulated market entry of new companies induce incumbent companies to move quality in the welfare-maximizing direction (Beil et al., 1995). Thus, encouraging entry into the rail passenger transport market might be an option. Gal-Or (1983) demonstrates that in a market without price regulation, entry might decrease average quality, but it increases the aggregate output. To summarize, in order to increase the share of passenger rail

transport in the modal split, a policy that creates competition is appropriate. As a positive side effect the influence of pressure groups is reduced. Furthermore, firms have an incentive to produce different qualities in an oligopolistic market (Motta, 1993; Shaked and Sutton, 1982), following which a minimum quality standard might be a policy to increase welfare as well as to improve the modal split (Ronen, 1991). Moreover, differentiated qualities better fit the needs of heterogeneous customers.

To summarize, the pressure group's influence on the minimum quality standards in the European Union, unintentionally decrease the rail transport share. To increase the quality options for travelers and to reduce anthropogenic greenhouse gas emissions a noteworthy alternative is a policy to support entry into the rail passenger transport market. Increased competition reduces the influence of pressure groups and might induce the production of differentiated qualities. As entry also increases the output, more passengers will use trains instead of other transport modes with higher emissions. Encouraging new firms to enter the market for passenger transport by rail and supporting competition is, compared to a regulation of quality, a superior policy to fight global warming.

## Appendix

### Welfare optimum

All Consumers with  $\theta \geq \theta_W = p^2/q$  buy one unit. Gross consumer surplus equals

$$CR = \frac{1}{\theta_1 - \theta_0} \int_{\theta_W}^{\theta_1} \sqrt{\theta q} d\theta = \frac{2}{3} \cdot \frac{(q \cdot \theta_1)^{3/2} - p^3}{q(\theta_1 - \theta_0)}.$$

Total costs are

$$TC = \beta q^2 \frac{\theta_1 - \theta_W}{\theta_1 - \theta_0}$$

and total surplus equals  $W = CR - TC$ , which is maximized by  $q_W$ ,  $p_W$ , and  $x_W$  reaching a value of

$$W_W = \frac{(7 - 5\alpha_W)^{1/3} (50\sqrt{\alpha_W} - (1 + 40\alpha_W)) \theta_1^{5/3}}{3 \cdot 5^{5/3} (\theta_1 - \theta_0)} \frac{\theta_1^{5/3}}{\beta^{1/3}}$$

The firms profit  $\Pi_W$  is zero. The marginal consumer is  $\theta_W = \alpha_W \theta_1$ .

### Monopoly

A monopolist maximizes profits

$$\Pi = [p - C(q)]D(q)$$

by using the first order conditions

$$\frac{\partial \Pi}{\partial p} = 0 \implies p = \frac{1}{3} \cdot (\beta q^2 \pm \sqrt{\beta^2 q^4 + 3q\theta_1})$$

and

$$\frac{\partial \Pi}{\partial q} = -C' D(p, q) + (p - C(q)) \frac{\partial D(p, q)}{\partial q} = 0.$$

Firm's profit is  $\Pi_M = \frac{9\theta_1^{5/3}}{20 \cdot 5^{2/3} \beta^{1/3} (\theta_1 - \theta_0)}$  and welfare yields  $W_M = -\frac{(\frac{5\theta_1^{2/3}}{\beta^{1/3}} - \frac{4\sqrt{10} \cdot \theta_1^{2/3}}{\beta^{1/3}}) \theta_1}{12 \cdot 5^{2/3} (\theta_1 - \theta_0)}$ .

## References

- Aranson, P. H. and Ordeshook, P. C. (1981). Regulation, redistribution, and public choice. *Public Choice*, 37(1):69–100.
- Becker, G. S. (1983). A theory of competition among pressure groups for political influence. *The Quarterly Journal of Economics*, 98(3):371–400.
- Beil, R. O., Kaserman, D. L., and Ford, J. M. (1995). Entry and product quality under price regulation. *Review of Industrial Organization*, 10(3):361–372.
- Besanko, D., Donnenfeld, S., and White, L. J. (1987). Monopoly and quality distortion: Effects and remedies. *The Quarterly Journal of Economics*, 102(4):743–768.
- Besanko, D., Donnenfeld, S., and White, L. J. (1988). The multiproduct firm, quality choice, and regulation. *The Journal of Industrial Economics*, 36(4):411–429.
- Bhadra, D. (2009). You (expect to) get what you pay for: A system approach to delay, fare, and complaints. *Transportation Research Part A: Policy and Practice*, 43(9-10):829–843.
- Black, D. (1948). On the rationale of group decision-making. *Journal of Political Economy*, 56:23–34.
- European Commission (2009). Accompanying document to the report from the Commission to the Council and the European Parliament on monitoring development of the rail market. *Commission Staff Working Document*, COM(2009)676 final.

- European Union (2007). Regulation (EC) No 1371/2007 of the European Parliament and the Council of 23 October 2007 on rail passengers' rights and obligations. *Official Journal of the European Union*, L 315:14–41.
- Eurostat (2009). *Consumers in Europe*. Statistical books. European Communities, 2009 edition.
- Gal-Or, E. (1983). Quality and quantity competition. *The Bell Journal of Economics*, 14(2):590–600.
- Hinich, M. J. and Ordeshook, P. C. (1969). Abstentions and equilibrium in the electoral process. *Public Choice*, 7(1):81–106.
- Kluger, B. D. (1989). Implications of quality standard regulation for multiproduct monopoly pricing. *Managerial and Decision Economics*, 10(1):61–67.
- Lambertini, L. (2006). *The economics of vertically differentiated markets*. Edward Elgar Publishing.
- Leland, H. E. (1979). Quacks, lemons, and licensing: A theory of minimum quality standards. *Journal of Political Economy*, 87(6):1328–1346.
- Lyons, G., Jain, J., and Holley, D. (2007). The use of travel time by rail passengers in Great Britain. *Transportation Research Part A: Policy and Practice*, 41(1):107–120.
- Motta, M. (1993). Endogenous quality choice: Price vs. quantity competition. *The Journal of Industrial Economics*, 41(2):113–131.
- Mussa, M. and Rosen, S. (1978). Monopoly and product quality. *Journal of Economic Theory*, 18(2):301–317.
- Nathanail, E. (2008). Measuring the quality of service for passengers on the hellenic railways. *Transportation Research Part A: Policy and Practice*, 42(1):48–66.
- Peltzman, S. (1976). Toward a more general theory of regulation. *The Journal of Law and Economics*, 19(2):211–240.
- Ronnen, U. (1991). Minimum quality standards, fixed costs, and competition. *The RAND Journal of Economics*, 22(4):490–504.
- Sappington, D. E. (2005). Regulating service quality: A survey. *Journal of Regulatory Economics*, 27(2):123–154.
- Shaked, A. and Sutton, J. (1982). Relaxing price competition through product differentiation. *The Review of Economic Studies*, 49(1):3–13.



- Sheshinski, E. (1976). Price, quality and quantity regulation in monopoly situations. *Economica*, 43(170):127–137.
- Sibly, H. (2009). The determinants of the quantity-quality balance in monopoly. *Australian Economic Papers*, 48(1):65–79.
- Spence, A. M. (1975). Monopoly, quality, and regulation. *The Bell Journal of Economics*, 6(2):417–429.
- Stigler, G. J. (1971). The theory of economic regulation. *The Bell Journal of Economics and Management Science*, 2(1):3–21.
- Teichert, T., Shehu, E., and von Wartburg, I. (2008). Customer segmentation revisited: The case of the airline industry. *Transportation Research Part A: Policy and Practice*, 42(1):227–242.

## **TU Braunschweig, Economics Department, Working Paper Series**

For a complete list of Working Papers published by TU Braunschweig, Economics Department, please visit the Department's website (<http://www.tu-braunschweig.de/vwl>)

- 01 „Crunch Time: A Policy to avoid the "Announcement Effect" when Terminating a Subsidy“**  
by Marc Gürtler and Gernot Sieg, May 2008
- 02 „Eine ökonomische Analyse einer Ausweitung des Arbeitnehmer-Entsendegesetzes“**  
by Uwe Kratzsch, June 2008
- 03 „Bread, peace and the attrition of power: Economic events and German election results“**  
by Irem Batool and Gernot Sieg, October 2008
- 04 „Grandfather rights in the market for airport slots“**  
by Gernot Sieg, November 2008
- 05 „Strategic Debt Management within the Stability and Growth Pact“**  
by Gernot Sieg and Ulrike Stegemann, April 2009
- 06 „When to Regulate Airports: A Simple Rule“**  
by Uwe Kratzsch and Gernot Sieg, May 2009
- 07 „Pakistan, Politics and Political Business Cycles“**  
by Irem Batool and Gernot Sieg, November 2009
- 08 „Quality standards for passenger trains: Political majorities and environmental costs“**  
by Julia Rothbauer and Gernot Sieg, March 2010