

Frey, Stefan; Grammig, Joachim

**Working Paper**

## Liquidity supply and adverse selection in a pure limit order book market

CFR Working Paper, No. 05-01

**Provided in Cooperation with:**

Centre for Financial Research (CFR), University of Cologne

*Suggested Citation:* Frey, Stefan; Grammig, Joachim (2005) : Liquidity supply and adverse selection in a pure limit order book market, CFR Working Paper, No. 05-01, University of Cologne, Centre for Financial Research (CFR), Cologne

This Version is available at:

<https://hdl.handle.net/10419/57717>

**Standard-Nutzungsbedingungen:**

Die Dokumente auf EconStor dürfen zu eigenen wissenschaftlichen Zwecken und zum Privatgebrauch gespeichert und kopiert werden.

Sie dürfen die Dokumente nicht für öffentliche oder kommerzielle Zwecke vervielfältigen, öffentlich ausstellen, öffentlich zugänglich machen, vertreiben oder anderweitig nutzen.

Sofern die Verfasser die Dokumente unter Open-Content-Lizenzen (insbesondere CC-Lizenzen) zur Verfügung gestellt haben sollten, gelten abweichend von diesen Nutzungsbedingungen die in der dort genannten Lizenz gewährten Nutzungsrechte.

**Terms of use:**

*Documents in EconStor may be saved and copied for your personal and scholarly purposes.*

*You are not to copy documents for public or commercial purposes, to exhibit the documents publicly, to make them publicly available on the internet, or to distribute or otherwise use the documents in public.*

*If the documents have been made available under an Open Content Licence (especially Creative Commons Licences), you may exercise further usage rights as specified in the indicated licence.*

**CFR-working paper NO. 05-01**

**Liquidity supply and adverse selection  
in a pure limit order book market**

**stefan frey • joachim grammig**

**centre for financial research**  
Look deeper

# Liquidity supply and adverse selection in a pure limit order book market

Stefan Frey  
and  
Joachim Grammig

January 5, 2005

## **Abstract**

Based on a structural model we analyze adverse selection costs and liquidity supply in a pure open limit order book market. Given the disconcerting empirical model performance reported in the previous literature, we relax restrictive assumptions of the underlying theoretical model concerning order book equilibrium and the distribution of market order volumes. We demonstrate that the resulting revised econometric methodology delivers considerably improved empirical results. Employing the alternative approach in a cross sectional analysis we provide evidence that adverse selection costs are more severe for smaller capitalized stocks, and find empirical support for one of the main hypothesis put forth by the theory of limit order book markets, which states that liquidity supply and adverse selection costs are inversely related. We also show that adverse selection component estimates based on the formal model and those obtained using popular model-free methods are closely correlated. This result indicates the robustness of the structural model, but also provides a theoretical underpinning for the application of the ad hoc method to limit order book data.

*Keywords:* Limit order book market, liquidity supply, adverse selection

*JEL classification:* G10, C32

Contact details authors. Email: [stefan.frey@uni-tuebingen.de](mailto:stefan.frey@uni-tuebingen.de), [joachim.grammig@uni-tuebingen.de](mailto:joachim.grammig@uni-tuebingen.de), postal address: Faculty of Economics, University of Tübingen, Mohlstr. 36, 72074 Tübingen, Germany, phone: +49 7071 2076009, fax: +49 7071 29 5546. Earlier drafts of the paper were presented at the German Finance Association's 2004 annual meeting, and seminars at the Universities Konstanz and Tübingen. We thank the participants for their helpful comments. We benefited greatly from discussions and collaborations with Helena Beltran, Albert Menkveld and Uwe Schweickert. We thank the German Stock Exchange for providing access to the Xetra order book data. The usual disclaimer applies.

# 1 Introduction

Ten years after, the question phrased in Glosten's (1994) celebrated paper: 'Is the electronic order book inevitable?' seems to be answered, given the triumphal procession of open order book systems in Continental Europe and recent developments in US stock markets.<sup>1</sup> A central feature of a pure limit order book market is the absence of dedicated market makers. Liquidity is supplied voluntarily by patient market participants who provide an inflow of limit buy and sell orders, the lifeblood of the trading process. The non-executed orders constitute the limit order book, the consolidated source of liquidity. As the viability and resiliency of such a market structure is in the interest of regulators, operators and individual investors it is not surprising that theoretical and empirical studies of limit order markets abound in the literature.<sup>2</sup> However, theoretical models explaining liquidity supply and demand in limit order book markets have not been very successful when confronted with real world order book data. Sandas (2001) extends the methodology proposed by De Jong et al. (1996) and estimates a version of Glosten's (1994) limit order book model allowing for real world features like discrete price ticks and time priority rules. The empirical results obtained using data from the Swedish stock exchange were not encouraging. Formal specification tests reject the model, transaction costs estimates are significantly negative, and book depth is systematically overestimated.

This paper shows how some restrictive assumptions of Glosten/Sandas type models concerning order book equilibrium and the distribution of market order sizes can be relaxed, while retaining suitable moment conditions for GMM estimation. We show that the resulting revised econometric methodology considerably improves the empirical performance. The alternative approach is employed in a cross sectional analysis of adverse selection costs and liquidity supply in a limit order market.

Given the disconcerting results reported in the previous literature, it is not surprising that many recent empirical papers analyzing limit order book market data have severed the close

---

<sup>1</sup>In January 2002 the New York Stock Exchange (NYSE), known as a hybrid specialist market, adopted the key feature of electronic order book markets, namely the public display of all limit orders (NYSE open book program).

<sup>2</sup>Traditionally, market microstructure theory focussed on quote driven markets with one or more market makers (see O'Hara (1995) for an overview). Recent papers by Parlour (1998), Seppi (1997) Foucault (1999) and Foucault et al. (2003) have changed the focus to the analysis of price and liquidity processes in order book markets.

connection to the theoretical framework. Extending the approach of the early paper by Biais et al. (1995), Hall et al. (2003), Coppejans et al. (2003), Cao et al. (2004), Grammig et al. (2004), Pascual and Veredas (2004) and Ranaldo (2004) employ discrete choice and count data models to analyze the determinants of order submission activity and the interaction of liquidity supply and demand processes in limit order markets. Beltran et al. (2004) advocate a principal components approach to extract latent factors that explain the state of the order book. Gomber et al. (2004) and Degryse et al. (2003) conduct intra-day event studies to analyze the resiliency of limit order markets. These papers interpret the empirical results in the light of predictions of microstructure models. However, a structural interpretation of the parameter estimates cannot be delivered.

This paper returns to the theoretical basis for the empirical analysis of limit order book markets. We hypothesize that the discontenting empirical model performance is due to the following problems. First, the real world trading process might be organized in a way that deviates too much from the theoretical framework. Second, some of the underlying theoretical model's assumptions might be too restrictive. The Glosten (1994) model imposes a zero expected profit condition for order book equilibrium which may not hold in a very active order market with discrete price ticks and time priority rules. Furthermore, the parametric distribution of market order sizes assumed by Sandas (2001), though leading to convenient closed form liquidity supply equations and GMM moment conditions, might be misspecified. Hasbrouck (2004) conjectures that the latter is responsible for the empirical failure of the model.

The original methodological contribution of this paper is to propose an alternative approach which relaxes these restrictive assumptions while still delivering convenient moment conditions that can be employed for GMM estimation and testing. For this purpose, we replace the zero expected marginal profit conditions by more robust conditions for order book equilibrium which are based on less restrictive assumptions regarding limit order trader behavior. Furthermore, we show that the parametric distributional assumption about market order sizes can be abandoned in favor of a straightforward nonparametric alternative.

We estimate the model using both the standard and the revised methodology based on reconstructed order book data from the Xetra electronic order book system which operates at various European exchanges. The data are tailor-made for the purpose of this paper

since the trading protocol closely corresponds to the theoretical trading process from which the moment conditions used for the empirical methodology are derived. We show that the revised econometric methodology delivers a much better empirical performance. Encouraged by the results, we employ the model in a cross sectional analysis of adverse selection effects and liquidity in the Xetra limit order market. This is the original empirical contribution of the paper. We report the following main results. First, we provide new evidence, from a limit order market, that adverse selection effects are more severe for smaller capitalized, less frequently traded stocks. This corroborates the results of previous papers dealing with different theoretical backgrounds, empirical methodologies, and market structures. Second, the empirical results support one of the main hypothesis of the theory of limit order markets, namely that book liquidity and adverse selection effects are inversely related. Finally, we compare the adverse selection components implied by the structural model estimates with popular ad hoc measures which are based on a comparison of effective and realized spreads. The latter approach is model-free, frequently used in practice and academia (see e.g. Boehmer (2004) and SEC (2001)) and requires publicly available trade and quote data only. The first approach is based on an structural model, permits an economic interpretation of the structural parameters, but the demand on the data is higher, as reconstructed order books are needed. We show that both methodologies lead to quite similar conclusions. This result indicates the robustness of the structural model approach. It also provides a theoretical underpinning for using the ad-hoc method for the analysis of limit order data.

The remainder of the paper is organized as follows. Section 2 describes the market structure and the data. Section 3 discusses the theoretical background and develops the empirical methodology. The empirical results are discussed in section 4. Section 5 concludes with a summary and an outlook for further research.

## **2 Market structure and data**

### **2.1 The Xetra open limit order book system**

In our empirical analysis we use data from the automated auction system Xetra which is employed at various European trading venues, like the Vienna Stock Exchange, the Irish Stock Exchange, the Frankfurt Stock Exchange (FSE) and the European Energy Exchange.

Xetra is a pure open order book system developed and maintained by the German Stock Exchange. It has operated since 1997 as the main trading platform for German blue chip stocks at the FSE. Since the Xetra/FSE trading protocol is the data generating process for this study we will briefly describe its important features.<sup>3</sup>

Between an opening and a closing call auction - and interrupted by another mid-day call auction - Xetra/FSE trading is based on a continuous double auction mechanism with automatic matching of orders based on the usual rules of price and time priority. During pre- and post-trading hours it is possible to enter, revise and cancel orders, but order executions are not conducted, even if possible. During the year 2004, the Xetra/FSE hours extended from 9 a.m. C.E.T to 5.30 p.m. C.E.T. For blue chip stocks there are no dedicated market makers like the Specialists at the New York Stock Exchange (NYSE) or the Tokyo Stock Exchange's Saitori. For some small capitalized stocks listed in Xetra there may exist so-called Designated Sponsors - typically large banks - who are required to provide a minimum liquidity level by simultaneously submitting competitive buy and sell limit orders. In addition to the traditional limit and market orders, traders can submit so-called iceberg (or hidden) orders. An iceberg order is similar to a limit order in that it has pre-specified limit price and volume. The difference is that a portion of the volume is kept hidden from the other traders and is not visible in the open book.

Market orders and marketable limit orders which exceed the volume at the best quote are allowed to 'walk up the book'.<sup>4</sup> In other words, market orders are guaranteed immediate full execution, at the cost of incurring a higher price impact on the trades. This is one of the key features of the stylized theoretical trading environment upon which the econometric modeling is based, but which may not necessarily be found in the real world trading process.<sup>5</sup>

---

<sup>3</sup>The Xetra trading system resembles in many features other important limit order book markets around the world like Euronext, the joint trading platform of the Amsterdam, Brussels, Lisbon and Paris stock exchanges, the Hong Kong stock exchange described in Ahn et al. (2001), and the Australian stock exchange, described in Cao et al. (2004).

<sup>4</sup>A marketable limit order is a limit order with a limit price that makes it immediately executable against the current book. In our study, 'real' market orders (i.e. orders submitted without a upper or lower price limit) and marketable limit orders are treated alike. Henceforth, both real market orders and marketable limit orders are referred to as market orders.

<sup>5</sup>For example, Bauwens and Giot (2001) describe how the Paris Bourse's trading protocol converted the volume of a market order in excess of the depth at the best quote into a limit order at that price which enters

Xetra/FSE faces some local, regional and international competition for order flow. The FSE maintains a parallel floor trading system, which bears some similarities with the NYSE, and, like in the US, some regional exchanges participate in the hunt for liquidity. Furthermore, eleven out of the thirty stocks we analyze in our empirical study are also cross listed at the NYSE, as an ADR or, in the case of Daimler/Chrysler, as a globally registered share. However, the electronic trading platform clearly dominates the regional and international competitors in terms of market shares, at least for the blue chip stocks that we study in the present paper.

## 2.2 Data and descriptive analyses

The Frankfurt Stock Exchange granted access to a database containing complete information about Xetra open order book events (entries, cancelations, revisions, expirations, partial-fills and full-fills of market, limit, and iceberg orders) which occurred during the first three months of 2004 (January, 2nd - March, 31st). The sample comprises the thirty German blue chip stocks constituting the DAX30 index. Based on the event histories we perform a real time reconstruction of the order book sequences. Starting from an initial state of the order book, we track each change in the order book implied by entry, partial or full fill, cancelation and expiration of market, limit, and iceberg orders in order to re-construct the order book at each point in time. For the empirical methodology outlined below, we need to take snapshots of the order book entries whenever a market order triggers an execution against the book.

insert table 1 about here

Table 1 shows some characteristics of the cross section of stocks. It shows that the market for the thirty DAX stocks is quite active. Averaged across stocks, about 13,000 non-marketable limit orders per stock are submitted each day. Among those, almost 11,000 get canceled before execution. This indicates that the limit order traders closely monitor the book for profit opportunities which is in fact one of the core assumptions of the underlying theoretical model. The large trade sizes (on average over 40,000 euros per trade) indicate that Xetra/FSE is a trading venue for institutional traders and not a retail market. Averaged across stocks, 2,100 trades are executed per day. On average 15% of the order volume walks up the book, i.e. part of the order is matched by standing limit orders beyond the best bid and the opposite side of the order book.



ask. Table 1 also reports average effective and realized spreads. The average effective spread is computed by taking two times the absolute difference of the transaction price of a trade and the prevailing midquote and averaging over all trades of a stock. Realized spreads are computed similarly, but instead of taking the prevailing midquote, the midquote five minutes after the trade is used.<sup>6</sup> To ensure comparability across stocks, we compute effective and realized spreads relative to the midquote prevailing at the time of the trade. Analyzing effective and realized spreads is a straightforward way to assess and compare transaction costs and adverse selection effects across stocks or trading venues. The realized spread can be viewed as a transaction costs measure that is purged of informational effects while the difference of effective and realized spread (referred to as price impact) is a natural measure for the amount of informational content of the order flow.<sup>7</sup> Average effective spreads range from 0.04 % to 0.13%. Realized spreads are considerably smaller. This implies that price impacts, computed as the difference between effective and realized spreads, are relatively large. In other words, a large fraction of the spread is due to informational order flow. This is not an unexpected result. In an open automated auction market there is no justification for inventory costs associated with market making or monopolistic power of a market maker, the other factors that may explain the spread. Furthermore, order submission fees, i.e. operational costs, are very small.

Table 1 shows that there is a considerable variation of price impacts, market capitalization and trading activity across stocks. The Spearman rank correlation between market capitalization and price impacts is  $-0.88$  ( $p$ -value  $< 0.001$ ) and the correlation between price impacts and daily number of trades is  $-0.87$  ( $p$ -value  $< 0.001$ ). Price impacts thus tend to be larger for smaller capitalized, less frequently traded stocks. We will come back to this result when discussing the empirical results based on the formal model.

---

<sup>6</sup>By choosing a five minutes lag we follow the previous literature, see e.g. SEC (2001)

<sup>7</sup>Boehmer (2004) and SEC (2001) conduct exhaustive comparisons of transaction costs and adverse selection effects in US exchanges based on effective and realized spread analyses.

### 3 Methodology

#### 3.1 Theoretical background and standard moment conditions

Sandas (2001) develops a variant of Glosten's (1994) limit order book model with discrete price ticks and time priority rules. The model delivers equations which predict that order book depth and adverse selection effects are inversely related. The associated empirical methodology is rooted in economic theory, and delivers structural parameter estimates of transaction costs and adverse selection effects in a limit order book market. In the following we will briefly describe the assumptions of the basic model and the estimation strategy proposed in Sandas (2001). The fundamental asset value  $X_t$  is described by a random walk with innovations depending on an adverse selection parameter  $\alpha$ , which gives the informativeness of a signed market order of size  $m_t$ ,

$$X_{t+1} = \mu + X_t + \alpha m_t + \eta_{X,t+1}. \quad (1)$$

Negative values of  $m_t$  denote sell orders, positive values buy orders. Furthermore, it is assumed that  $E(X_t) = 0$ .  $\eta_{X,t+1}$  is an innovation orthogonal to  $X_t$ .  $\mu$  gives the expected change in the fundamental value. Market buy and sell orders are assumed to arrive with equal probability with a two-sided exponential density describing the distribution of order sizes  $m_t$ :

$$f(m_t) = \begin{cases} \frac{1}{2\lambda} e^{-\frac{m_t}{\lambda}} & \text{if } m_t > 0 \text{ (market buy)} \\ \frac{1}{2\lambda} e^{\frac{m_t}{\lambda}} & \text{if } m_t < 0 \text{ (market sell)}. \end{cases} \quad (2)$$

Risk neutral limit order traders face a order processing cost  $\gamma$  (per share) and have knowledge about the distribution of market order size and the adverse selection component  $\alpha$ , but not about the true asset price. They choose limit order prices and quantities such that their expected profit is maximized. If the last unit at any discrete price tick exactly breaks even, i.e. has expected profit equal to zero, the order book is in equilibrium.

Denote the ordered discrete price ticks on the ask (bid) side by  $p_{+k}$  ( $p_{-k}$ ) with  $k = 1, 2, \dots$  and the associated volumes at these prices by  $q_{+k}$  ( $q_{-k}$ ). Given these assumptions and setting  $q_{0,t} \equiv 0$ , the equilibrium order book at time  $t$  can recursively be constructed as follows:

$$\begin{aligned} q_{+k,t} &= \frac{p_{+k,t} - X_t - \mu - \gamma}{\alpha} - Q_{+k-1,t} - \lambda & k = 1, 2, \dots & \text{(ask side)} \\ q_{-k,t} &= \frac{X_t + \mu - p_{-k,t} - \gamma}{\alpha} - Q_{-k+1,t} - \lambda & k = 1, 2, \dots & \text{(bid side),} \end{aligned} \quad (3)$$

where  $Q_{+k,t} = \sum_{i=+1}^{+k} q_{i,t}$  and  $Q_{-k,t} = \sum_{i=-1}^{-k} q_{i,t}$ . Equation (3) contains the model's key message. Order book depth and informativeness the order flow are inversely related. If the model provides a good description of the real world trading process, and if consistent estimates of the model parameters can be provided, one can use equation (3) to predict the evolution of the order book for a given stock and quantify adverse selection costs and their effect on order book depth.

Sandas (2001) proposes to employ GMM for parameter estimation and specification testing. Assuming mean zero random deviations from order book equilibrium at each price tick, and eliminating the unobserved fundamental asset value  $X_t$  by adding the resulting bid and ask side equations for quote  $+k$  and  $-k$ , the following unconditional moment restrictions can be used for GMM estimation,

$$E(p_{+k,t} - p_{-k,t} - 2\gamma - \alpha(Q_{k,t} + 2\lambda + Q_{-k,t})) = 0 \quad k = 1, 2, \dots \quad (4)$$

Since equation (4) follows from the assumption that the last (marginal) limit order at the respective quote has zero expected profit, it is referred to as 'marginal break even condition'. A second set of moment conditions results from eliminating  $X_t$  by subtracting the deviations from equilibrium depths at the  $k$ th quote at time  $t + 1$  and  $t$  and taking expectations which yields

$$\begin{aligned} E(\Delta p_{+k,t+1} - \alpha(Q_{k,t+1} - Q_{k,t}) - \mu - \alpha m_t) &= 0 \quad k = 1, 2, \dots \\ E(\Delta p_{-k,t+1} + \alpha(Q_{-k,t+1} - Q_{-k,t}) - \mu - \alpha m_t) &= 0 \quad k = 1, 2, \dots, \end{aligned} \quad (5)$$

where  $\Delta p_{j,t+1} = p_{j,t+1} - p_{j,t}$ . We refer to the equations in (5) as 'marginal update conditions'. They relate the expected changes in the order book to the market order flow. An obvious additional moment condition to identify the expected market order size is given by

$$E(|X_t| - \lambda) = 0. \quad (6)$$

Moment conditions (4), (5) and (6) can straightforwardly be exploited for standard GMM estimation a la Hansen (1982).

## 3.2 Revised moment conditions

### 3.2.1 Alternatives to the distributional assumption on market order sizes

Discussing the empirical performance of the Glosten/Sandas type models, Hasbrouck (2004) conjectures that, although the fundamental assumptions of the model may be correct, the exponential assumption on the market order size distribution of equation (2) may be inappropriate. This misspecification could be responsible for the disconcerting empirical results which have been reported when the model is confronted with real world data. Of course, the exponential assumption is convenient both from a theoretical and an econometric perspective. It yields the closed form conditions for order book equilibrium (3) which, in turn, lend itself conveniently to GMM estimation. However, the parametric assumption can easily be dispensed with and a straightforward nonparametric approach can be pursued for GMM estimation. In the appendix we show that the zero expected profit condition for the marginal unit at ask price  $p_{+k}$  can be written as

$$p_{+k} - \gamma - \alpha E[m|m \geq Q_{+k}] - X - \mu = 0.^8 \quad (7)$$

Assuming of exponentially distributed market orders as in equation (2) we have  $E[m|m \geq Q_{+k}] = Q_{+k} + \lambda$ . Hence, equation (7) becomes

$$Q_{+k} = \frac{p_{+k} - X - \gamma - \mu}{\alpha}. \quad (8)$$

This is an alternative to equation (3) to describe order book equilibrium. Although the closed form expression implied by the parametric distributional assumption is convenient, it is not necessary that the econometric methodology has to rely on it. Instead, we can rewrite equation (7) to obtain

$$E[m|m \geq Q_{+k}] = \frac{p_{+k} - X - \gamma - \mu}{\alpha}. \quad (9)$$

In order to utilize equation (9) for GMM estimation, one can simply replace  $E[m|m \geq Q_{+k}]$  by the conditional sample means  $\hat{E}[m|m \geq Q_{+k}]$ . Since the number of observations will be large for frequently traded stocks (which is the case in our application), conditional expectations can be precisely estimated by the conditional sample means. Nonparametric equivalents of the marginal break even and update conditions (4) and (5) can be derived in the same fashion

---

<sup>8</sup>For notational brevity we omit the subscripts. Market order size  $m$  and fundamental price  $X$  are observed at time  $t$ , and the equation holds for any price tick  $p_{+k,t}$  with associated cumulative volume  $Q_{+k,t}$ ,  $k = 1, 2, \dots$

as described in the previous section. GMM estimation becomes a bit more cumbersome and computer intensive than for the parametric specification, since evaluating the GMM objective function involves computation of the conditional sample means, but it is a straightforward exercise.

### **3.2.2 Replacing marginal by average profit conditions**

The moment conditions derived from the zero expected profit assumption on the marginal unit are appropriate if the real world trading process features a continuous grid of prices and a continuously replenished limit order book. In such a frictionless setting the marginal zero profit condition should hold for each price/cumulated size combination. However, real world open order book trading systems feature discrete price ticks, FIFO time priority rules (orders with a given limit price that have been entered first are executed first) and delays in replenishing the book due to lags in processing the information about the state of the order book. The latter is reflected by the empirical fact that, also in our sample, not every feasible discrete price tick is endowed with nonzero order volume at any point in time. These 'holes in the order book' (zero volume price ticks in between two price ticks with nonzero volume) cannot be explained by the theoretical model as it would be rational to place an order at the zero volume quote tick thereby receiving price and time priority. Nevertheless, Sandas (2001) suggests to check the zero expected zero profit condition against the last unit of the limit order with the least time priority at each discrete price tick. This approach can be criticized on two grounds.

First, in order to justify the marginal zero profit assumption, one implicitly assumes a repetitive two phase trading process. In phase one, agents submit limit orders until the book is free of (expected) profit opportunities. The orders are sorted by price priority and, within the same price tick, by time priority. When the book has reached a Nash equilibrium, i.e. no agent wants to submit, revise or cancel her order, the order book should display no holes. In phase two, a single market order of a given size arrives (exogenously) and is executed against the equilibrium order book. After the respective standing limit orders have been executed against this market order, we go back to phase one, during which the book is replenished again until equilibrium is reached and another market order arrives and so forth. The rapid submission, cancelation and execution processes in a real world market do not conform to

such a static trading protocol. The holes in the book are a clear indication for this statement.

Second, the zero expected profit condition for the marginal order implies nonzero expected profits for limit order units that do not occupy the last position of the respective quote. As a consequence, the whole book offers positive expected profit and traders acting as market makers receive nonzero expected profits. If market making would provide nonzero expected profit opportunities, this would attract new entrants and competition between these would-be market makers would ultimately eliminate any profit opportunities.

We therefore suggest to replace the marginal zero profit condition by a more robust equilibrium condition that does not rely on the assumption that limit order traders immediately cancel or adjust all their orders which show negative expected profit on a marginal unit, and that also acknowledges the effect of market maker competition on expected profits. To derive the new equilibrium condition and the associated moment conditions, we retain most of the assumptions of the Glosten/Sandas framework. However, instead of evaluating the expected profit of the marginal profit for last unit at each quote  $k$ , it is assumed that the expected profit of the whole block of limit orders at any quote is zero. This assumption allows to differentiate between two types of costs associated with the submission of a limit order, a fixed cost component, like order submission and surveillance costs, and marginal (per share) costs, like execution or clearing fees and opportunity costs of market making. Note that these costs are not affected by adverse selection costs which are, as before, implicitly accounted for by the limit prices set by the limit order traders. In the appendix we show that the liquidity supply equations, which describe a limit order book that is in a zero expected profit equilibrium, can be written as

$$\begin{aligned}
 q_{+k,t} &= 2 \left( \frac{p_{+k,t} - X_t - \gamma - \frac{\xi}{q_{+k,t}}}{\alpha} - \lambda \right) - Q_{+k-1,t} \quad k = 1, 2, \dots \quad (\text{ask side}) \\
 q_{-k,t} &= 2 \left( \frac{X_t - p_{-k,t} - \gamma - \frac{\xi}{q_{-k,t}}}{\alpha} - \lambda \right) - Q_{-k+1,t} \quad k = 1, 2, \dots \quad (\text{bid side}). \quad (10)
 \end{aligned}$$

$\xi$  denotes the fixed cost component which is assumed to be identical for each price tick in the order book. In order to derive the equations in (10), we have retained the parametric assumption about the distribution of trade sizes (see equation (2)).<sup>9</sup> The equations in (10)

---

<sup>9</sup>The liquidity supply equations can also be delivered under the nonparametric alternative described in 3.2.1.

are the counterpart of the equilibrium conditions (3) which result from the zero expected profit condition for the marginal orders.

Proceeding as described above, i.e. by assuming zero expected derivations from order book equilibrium and taking differences across quotes and over time, we can deliver analogous moment conditions to the marginal break even conditions in equation (4) and the marginal updating conditions in (5). Eliminating the unobserved fundamental asset value  $X_t$  by adding the bid and ask side equilibrium equations for quote  $+k$  and  $-k$  and assuming zero expected deviations from equilibrium yields the following unconditional moment restrictions which we refer to as average break even conditions,

$$E \left( \Delta p_{\pm k,t} - 2\gamma - \frac{\xi}{q_{+k,t}} - \frac{\xi}{q_{-k,t}} - \alpha \left( \frac{1}{2}Q_{+k,t} + 2\lambda + \frac{1}{2}Q_{-k,t} \right) \right) = 0 \quad k = 1, 2, \dots, \quad (11)$$

where  $\Delta p_{\pm k,t} = p_{+k,t} - p_{-k,t}$ . Subtracting deviations from equilibrium depths at the  $k$ th quote at time  $t+1$  and  $t$  and taking expectation yields the following equations which we refer to as average update conditions,

$$\begin{aligned} E \left( \Delta p_{+k,t+1} - \frac{\xi}{q_{+k,t}} + \frac{\xi}{q_{+k,t-1}} - \frac{\alpha}{2} (Q_{+k,t+1} - Q_{+k,t}) - \mu - \alpha m_t \right) &= 0 \quad k = 1, 2, \dots \\ E \left( \Delta p_{-k,t+1} + \frac{\xi}{q_{+k,t}} - \frac{\xi}{q_{+k,t-1}} + \frac{\alpha}{2} (Q_{-k,t+1} - Q_{-k,t}) - \mu - \alpha m_t \right) &= 0 \quad k = 1, 2, \dots, \end{aligned} \quad (12)$$

where  $\Delta p_{j,t+1} = p_{j,t+1} - p_{j,t}$ . The average break even and update conditions replace the marginal break even and update conditions of equation (4) and equation (5).

## 4 Empirical results

### 4.1 Performance comparisons

Using the DAX30 order book data we follow Sandas (2001) and estimate the model parameters exploiting the marginal break even conditions (4) and the marginal updating conditions (5) along with (6). To construct the moment conditions we use the respective first four best quotes, i.e.  $k = 1, \dots, 4$  on the bid and the ask side of the order book. This yields thirteen moment conditions: four break even conditions, eight update conditions, and the moment condition (6). Order sizes  $X_t$  are expressed in 1000 shares.

insert table 2 about here

Table 2 contains the first stage GMM results.<sup>10</sup> We report parameter estimates,  $t$ -statistics and the value of the GMM  $J$ -statistic with associated  $p$ -values. Under the null hypothesis that the moment conditions are correctly specified, the  $J$ -statistic is asymptotically  $\chi^2$  with degrees of freedom equal to the number of moment conditions minus the number of estimated parameters. The estimation results based on the Xetra data are in line with the central findings reported by Sandas (2001). They are a bit more favorable for the model, though. At least, for nine out of thirty stocks the model is not rejected at 1 % significance level while in Sandas' (2001) application the model was rejected for all stocks.<sup>11</sup> Non-rejection tends to occur for the less frequently traded stocks. The cross sectional correlation of the  $J$ -statistic and the daily number of trades is 0.87 (Spearman rank correlation,  $p$ -value  $< 0.001$ ). Like in Sandas' (2001) application, the transaction cost estimates ( $\gamma$ ) are significantly negative, a result that is difficult to reconcile with the underlying theoretical model. Hence, even with a data generating process that corresponds very close to the theoretical framework, the model does not seem to fit the data very well.

insert table 3 about here

insert table 4 about here

Tables 3 and 4 report the results that are obtained when the modified moment conditions suggested in the previous section are used. As before, the first four quotes on each market side are used for the construction of break even and update conditions. Table 3 reports the estimation results for a specification that does not rely on a parametric assumption on the distribution of the market order size when constructing the marginal break even and the update conditions as described in section 3.2.1. The results reported in table 4 are obtained when using the average break even and update conditions (11) and (12) for GMM estimation, while maintaining the parametric assumption (2) about the trade size distribution. For each parametric specification, the moment condition of equation (6) is employed, too. The full set of eight update conditions is exploited.

---

<sup>10</sup>Two stage and iterated GMM estimates are quite similar and are not reported to conserve space.

<sup>11</sup>When only the visible part of the book is used, i.e. the limit order volume from the hidden orders is excluded, the results are worse. Only for one out of the 30 stocks, the model is not rejected. The visible book results are not reported to conserve space.



The estimates reported in table 3 show that abandoning the parametric assumption concerning the market order size distribution does not improve the results. Hasbrouck’s (2004) conjecture that the distributional assumption might be responsible for the model’s empirical failure is therefore not supported. Generally, the estimates of the adverse selection components, transaction costs and drift parameters do not change dramatically compared to the baseline specification. The transaction cost estimates remain negative, and only for five out of thirty stocks the model is not rejected at 1 % level of significance.<sup>12</sup>

Maintaining the distributional assumption, but using average break even conditions instead of marginal break even conditions, considerably improves the empirical performance. Table 4 shows that we have model non-rejection for 22 out of the 30 stocks at the 1% significance level (plus one borderline case with  $p\text{-value} = 0.008$ ).<sup>13</sup> Especially for the larger capitalized, frequently traded stocks, the results improve noticeably. We obtain considerable smaller  $J$ -statistic values even for the stocks for which we reject the model at 1 % significance level. The transaction costs estimates are reasonable and broadly comparable with the relative realized spreads figures reported in table 1. For example, the estimation results imply that transaction costs account for 0.009% of the euro value of a median sized trade in DaimlerChrysler. This value is quite comparable with the average relative realized spread which amounts to 0.01%. Recall that the realized spread is interpreted as a transaction costs measure which is purged of informational effects.

insert figure 1 about here

Figure 1 shows graphically the improved empirical performance delivered by the revised methodology. The figure depicts means and medians of implied and observed bid side price schedules of four selected stocks.<sup>14</sup> The results obtained from the baseline estimation which uses marginal moment conditions confirm the disturbing findings reported in Sandas (2001). The price schedules implied by the model estimates are below the observed price schedules at

---

<sup>12</sup>Using only the visible part of the book yields 3 non-rejections at 1 % level of significance, a slight improvement over the parametric specification.

<sup>13</sup>We obtain the same result when only the visible part of the book is used: 22 non-rejections with one borderline case at 1% significance level. Given that the baseline specification with marginal moment conditions was rejected for all stocks except one, the improvement of empirical performance brought about by using the average moment conditions is more noticeable when only the visible book is used.

<sup>14</sup>The figures look quite similar both for the ask side and the other stocks.

all relevant volumes. The economically implausible negative price discount at small volumes is caused by the negative transaction costs estimates. This suggests that the model is not only rejected on the grounds of statistical significance, but that fundamentally fails to explain the data. The model does a bad job even in describing the 'average' state of the order book. However, figure 1 shows that when working with average break even and update conditions the empirical performance of the model is considerably improved. Especially the median observed price schedules correspond closely to those implied by the model.<sup>15</sup>

These results indicate that the ability of Glosten's theoretical framework to explain real world order book variation is greater than previously thought. However, assuming that a very volatile limit order book, like for example the DaimlerChrysler book with almost 19,000 limit order submissions and almost 16,000 cancelations per day, is in a no-profit equilibrium as described by the marginal break even conditions is too restrictive. Adhering to the basic theoretical framework, but using average break even conditions seems to be a more sensible strategy to model an active limit order book market.

## 4.2 Cross sectional analyses

Encouraged by the improved empirical performance of the revised methodology, this section uses the estimation results reported in table 4 to conduct a cross sectional analysis of liquidity supply and adverse selection costs in the Xetra limit order book market. To ensure comparability across stocks, we follow a suggestion by Hasbrouck (1991) and standardize the adverse selection component  $\alpha$  by computing

$$\tau = \frac{\alpha \cdot \bar{m}}{\bar{P}}, \quad (13)$$

where  $\bar{m}$  is the sample average absolute, i.e. non-signed, trade size expressed in number of shares.  $\bar{P}$  is the sample average of the midquote of the respective stock.  $\tau$  (times 100) approximates the percentage change of the stock price caused by a trade of 'average' size. This a relative measure which is comparable across stocks. The stock specific  $\tau$  estimates

---

<sup>15</sup>We also have estimated a specification that combines the nonparametric approach towards trades sizes and average moment conditions, but the results (not reported) are not improved compared to the parametric version. In this version, model acceptance occurs for 17 out of 30 stocks (16 out of 30 when only the visible part of the book is used). The following analysis therefore focuses on the parametric specification using average moment conditions.

are reported in the last column of table 4. In the following subsections we study the relation of  $\tau$  and market capitalization, trading frequency, liquidity supply and alternative adverse selections measures.

#### **4.2.1 Adverse selection effects, market capitalization and frequency of trading**

In their seminal papers Hasbrouck (1991) and Easley et al. (1996) have reported empirical evidence that adverse selection effects are more severe for smaller capitalized stocks. Easley et al. (1996) use a formal model assuming a Bayesian market maker who updates quotes according to the arrival of trades while Hasbrouck (1991) estimates a vector autoregression (VAR) involving trade and midquote returns. Both methodologies have modest data requirements. To estimate the model by Easley et al. (1996) one only needs to count the number of buyer and seller initiated trades per trading day to estimate the probability of informed trading (PIN), the central adverse selection measure in this framework. As it allows a structural interpretation of the model parameter estimates the methodology is quite popular in empirical research. Hasbrouck's VAR methodology is not based on a formal model, but the reduced form VAR equations are compatible with a general class of microstructure models. The adverse selection measure is given by the cumulative effect of a trade innovation on the midquote return. To estimate the model, standard trade and quote data are sufficient.

Both methodologies are not specifically designed for limit order markets, but rather for market maker systems. Accordingly, their main applications have been to analyze NYSE and NASDAQ stocks. In the present paper, the data generating process, the theoretical background and the empirical methodology are quite different. However, we reach the same conclusion as Hasbrouck (1991) and Easley et al. (1996). When computing the Spearman rank correlation of the market capitalization and the estimated standardized adverse selection component ( $\tau$ ) we obtain a value of  $-0.90$  ( $p$ -value  $< 0.001$ ). The correlation of  $\tau$  and the daily number of trades is  $-0.92$  ( $p$ -value  $< 0.001$ ), and the correlation of  $\tau$  and the daily turnover is  $-0.95$  ( $p$ -value  $< 0.001$ ). The estimation results thus confirm the previous evidence also for a open limit order market: Adverse selection effects are more severe for smaller capitalized stocks.

#### 4.2.2 Adverse selection and liquidity supply

Many theoretical market microstructure models predict that liquidity supply and informed order flow are inversely related. As the standard framework for microstructure models is a stylized NYSE trading process with a single market maker quoting best bid and ask prices and associated depths (the 'inside market'), liquidity in those models is usually measured by the inside spread set by the specialist/market maker. Sequential trading models like Easley et al. (1996) and spread decomposition models like Glosten and Harris (1988) predict that liquidity (as measured by the spread) and informed order flow are inversely related. In the presence of informed order flow, the market maker widens the spread in order to balance the losses that occur when trading with superiorly informed agents. More informed order flow thus implies reduced liquidity. Empirical analyses of specialist markets have confirmed this prediction. The results reported in table 5 provide evidence that the inverse relation of inside spread and informed order flow also holds for open limit order book markets in which limit order traders, instead of specialists, determine the inside market. The table reports the cross sectional correlation (Spearman rank correlation) of the standardized adverse selection component  $\tau$  and the effective, quoted, and the realized spreads. Effective and quoted spreads and  $\tau$  are strongly positively correlated while the correlation with the realized spread and  $\tau$  is insignificantly different from zero. Given the interpretation of the realized spreads as a transaction costs measure which is purged of any informational effects, this is in line with the theoretical prediction. Only the effective and quoted spreads should be effected by adverse selection effects.

In a transparent open limit order market framework, it is informative to analyze liquidity also beyond the inside market (see Beltran et al. (2004) and Cao et al. (2004) for empirical studies of the informational content of the order book beyond the best quotes). Equation (3) shows that in Sandas' (2001) marginal zero expected profit equilibrium, book liquidity (measured by the depth at ticks from the inside market) is inversely related to the adverse selection component  $\alpha$ . Other things being equal, stocks for which informational order flow is high are predicted to be less liquid than low  $\alpha$  stocks.

insert table 5 about here

The cross sectional results reported in table 5 strongly confirm this prediction. In order

to measure liquidity displayed in the order book and beyond the inside market we employ a pre-trade book liquidity measure similar to those proposed in Irvine et al. (2000) and Gomber et al. (2004). The basic idea is to compare the per-share price of a time  $t$  buy or sell order of volume  $v$  with the prevailing best ask or bid price, respectively. The per-share price obtained when selling  $v$  shares at time  $t$  can be computed as

$$b_t(v) = \frac{\sum_k b_{k,t} v_{k,t}}{v}, \quad (14)$$

where  $v$  is the volume executed at  $k$  different unique bid prices  $b_{k,t}$  with corresponding volumes  $v_{k,t}$  standing in the limit order book at time  $t$  (this takes into account that the order can 'walk up the book'). The unit price  $a_t(v)$  of a buy of size  $v$  at time  $t$  can be computed analogously. To ensure comparability across stocks, we relate the per-share prices to the best quotes, viz

$$ap_t(v) = \frac{a_t(v) - a_t(1)}{a_t(1)} \cdot 10,000 \quad (15)$$

and

$$bp_t(v) = \frac{b_t(1) - b_t(v)}{b_t(1)} \cdot 10,000. \quad (16)$$

We refer to  $ap_t(v)$  as the ask price impact and to  $bp_t(v)$  as the bid price impact. These price impacts serve as natural liquidity measures for an open order book system. They account for the bi-dimensionality of liquidity supply (price and volume), and are comparable across stocks. For the purpose of this study we set  $v = 100,000$  euros. To obtain stock specific measures we take sample averages over all order book snapshots. Taking absolute values and averaging over the buy and sell side measure, we obtain a single stock specific book liquidity measure, which we refer to as BLM. The results reported in table 5 strongly supports the hypothesis that adverse selection effects and book liquidity beyond the best quotes are negatively related. The relation is even stronger than for liquidity measured by the inside spread. The Spearman correlation of the standardized adverse selection component  $\tau$  and BLM is 0.98 ( $p$ -value  $< 0.001$ ), compared to 0.76 ( $p$ -value  $< 0.001$ ) for quoted spread and  $\tau$ . Stocks for which we estimate a high adverse selection component are also the less liquid stocks.

#### **4.2.3 Ad hoc versus model-based estimates of adverse selection effects in a limit order book market**

In this subsection we investigate whether the adverse selection estimates obtained from the formal model and those delivered by the simple analysis of effective and realized spreads (see

section 2) point in the same direction. The two methodologies differ in two main aspects. First, the estimation of adverse selection components by taking the difference of effective and realized spread is not based on a specific theoretical model. The economic intuition behind the methodology, however, is quite clear, which explains the popularity of the approach. A large difference between effective and realized spread indicates informational content of the order flow as the midquote tends to move in the direction of the trade. If a market buy (sell) order initiates a trade at time  $t$ , then the midquote five minutes after the trade is on average above (below) the time  $t$  midquote. By contrast, the estimates of the standardized adverse selection component reported in table 4 are based on a formal model assuming rational limit order traders who place their order submissions explicitly taking into account the amount of informativeness of the order flow. Second, computation of price impacts by taking the difference of effective and realized spread only requires publicly available trade and (best) quote data. To obtain the estimates in the formal framework considered in this paper, reconstructed order book data are needed. The latter methodology thus uses richer data, which are, however, more difficult to obtain.

But do the two different methodologies lead to the same conclusions? To answer this question we compute the Spearman rank correlation between the standardized adverse selection components ( $\tau$ ) reported in table 4 and the difference of effective and realized spreads. The cross sectional correlation is 0.95, which indicates that the two different methodologies point in the same direction. This indicates the robustness of the estimation results of the formal model and also provides a theoretical justification for using the popular ad hoc method for the analysis of adverse selection effects in limit order book markets.

## 5 Conclusion and outlook

An increasing number of financial assets trade in limit order markets. These markets can be characterized by the following keywords: Transparency, anonymity and endogenous liquidity supply. Transparency, because they offer a more or less unobstructed view on the liquidity supplied on the offer and buy side. Anonymity, because prior to a trade the identity of neither those agents supplying nor of those traders demanding liquidity is revealed. Endogenous liquidity supply, because typically no dedicated market makers responsible for quoting bid and ask prices are present. The question how liquidity quality and price formation in such a

trading design is affected by informed order flow is a crucial one, both from a theoretical and a practical point of view. Glosten (1994) has put forth a formal model that describes how an equilibrium order book emerges in the presence of potentially informed order flow. Sandas (2001) has confronted the Glosten model with real world data and reported quite discouraging results. His findings suggest that Glosten's model contains too many simplifying assumptions in order to provide a valid description of the intricate real world trading processes in limit order markets.

This paper shows that the ability of Glosten's basic framework to explain real world order book formation is greater than previously thought. We estimate the model using data produced by a DGP that closely corresponds to the Glosten's theoretical framework and confirm the previous finding that the baseline specification put forth by Sandas (2001) is generally rejected. However, relaxing the assumption about marginal zero profit order book equilibrium in favor of a weaker equilibrium condition, considerably improves the empirical performance. The equilibrium condition proposed in this paper does not assume that traders immediately cancel a marginal order that shows non-positive expected profit. It also acknowledges the fact that competition between potential market makers will render the expected profit offered by the whole book ultimately to zero (after accounting for opportunity costs). Employing the revised econometric methodology, formal specification tests now accept the model in the vast majority of cases at conventional significance levels. A comparison of implied and observed order book schedules shows that the model estimated on the revised set of moment conditions fits the data quite well. We conclude that Glosten's theoretical framework can also be transferred into a quite useful empirical model.

On the other hand, the conjecture put forth by Hasbrouck (2004), which states that the distributional assumption regarding the market order sizes is responsible for the empirical model failure is not supported. The paper has developed a straightforward way to circumvent the restrictive distributional assumption and proposes a nonparametric alternative. However, this modification does not deliver an improved empirical performance.

Given the overall encouraging results, the empirical methodology is employed for an analysis of liquidity supply and adverse selection costs in a cross section of stocks traded in one of the largest European equity markets. The main results can be summarized as follows:

- We have provided new evidence, from a limit order market, that adverse selection effects

are more severe for smaller capitalized, less frequently traded stocks. This corroborates the results of previous papers dealing with a quite different theoretical background, empirical methodology and market structure.

- The empirical results support one of the main hypothesis of the theory of limit order markets, namely that book liquidity and adverse selection effects are inversely related.
- The adverse selection component estimates implied by the structural model and ad hoc measures of informed order flow which are based on a comparison of effective and realized spreads point in the same direction.

The latter result is useful, because is not always possible to estimate the structural model, most often because of the lack of suitable data. The result also points towards the robustness of the structural model.

Avenues for further research stretch in various directions. The results reported in this paper have vindicated the empirical relevance the Glosten type market order model. Practical issues in market design can thus be empirically addressed based on a sound theoretical framework. The revised methodology could be employed to evaluate changes in trading design on liquidity quality, with the advantage that the results can be interpreted on a sound theoretical basis. A comparison of (internationally) cross listed stocks seems also promising, especially after the NYSE's move towards adopting the key feature of a open limit order market, the public display of the limit order book. An interesting question would be to investigate whether the recently reported failures of cross listings (in terms of insufficient trading volume in the foreign markets) are due to market design features that aggravate potential adverse selection effects.

Second, a variety of methodological extensions could be considered. Sandas (2001) has already addressed the issue of state dependence of the model parameters. He used a set of plausible instruments to scale the model parameters. Recent papers on price impacts of trades point to alternative, powerful instruments that could be used, and which might improve the empirical performance and explanatory power. For example, Dufour and Engle (2000) have emphasized the role of time between trades within Hasbrouck's (1991) VAR framework. As the Glosten/Sandas type model considered in this paper is also estimated on irregularly spaced data, it seems natural to utilize their findings. Furthermore, the exogeneity of the



market order flow is a restrictive assumption that should be relaxed. Gomber et al. (2004) and Coppejans et al (2003) show that market order traders time their trades by submitting larger trade sizes at times when the book is relatively liquid. Hence, using the liquidity state of the book as a scaling instrument for the expected order size parameter seems a promising strategy. Finally, as in many GMM applications, the number of moment conditions that are available are large, and the difficult task is to pick both relevant and correct moment conditions. Recent contributions by Andrews (1999) and Hall and Peixe (2001) could be utilized to base the selection of moment conditions on a sound methodological basis.

## A Appendix: Derivation of revised moment conditions

This section outlines the background for the revised set of moment conditions describing order book equilibrium. We start by writing the zero expected profit condition for one unit of a limit sell order as

$$E(R_t - X_{t+1}) = 0, \quad (\text{A.1})$$

where  $R_t$  denotes the net revenue (minus transaction costs) received from selling one unit of a limit order at price  $p_t$  to a market order trader who submitted a market buy order of size  $m_t$ .<sup>16</sup>  $X_{t+1}$  denotes the fundamental value of the stock after the arrival the (buy) market order.  $X_{t+1}$  depends on the current value  $X_t$  and the signed market order size  $m_t$ , i.e.  $X_{t+1} = g(m_t, X_t)$ . For brevity of notation we henceforth omit the time  $t$  subscripts whenever it is unambiguous to do so.

The expected profit of the market order depends on the position of the limit order in the order queue and the distribution of market orders, i.e. we can write equation (A.1) as

$$\int_Q^\infty (R - g(m, X))f(m)dm, = 0. \quad (\text{A.2})$$

$Q$  is the cumulated sell order volume standing in the book before the considered limit order unit and  $f(m)$  denotes the probability density function of  $m$ . Alternatively, equation (A.2) can be written as

$$(R - E[g(m, X)|m \geq Q]) \cdot P(m \geq Q) = 0. \quad (\text{A.3})$$

Assuming the linear specification in equation (1) for  $g(m, X)$ , and dividing by the unconditional probability,  $P(m \geq Q)$ , equation (A.3) simplifies to

$$R - \alpha E[m|m \geq Q] - X - \mu = 0. \quad (\text{A.4})$$

Equation (A.4) highlights that the expected profit of a limit order trader depends on the upper tail expectation of the market order distribution.

Assuming exponentially distributed market order sizes as in equation (2) we have

$$E[m|m \geq Q] = Q + \lambda \quad (\text{A.5})$$

Using  $R = p - \gamma$  this yields

$$Q = \frac{p - X - \gamma - \mu}{\alpha} - \lambda, \quad (\text{A.6})$$

---

<sup>16</sup>The exercise is analogous for the bid side, but to conserve space, we focus on the sell side of the book.

which a generalized form of equation (3). Without the distributional assumption, the equivalent of equation (A.6) is

$$E[m|m \geq Q] = \frac{p - X - \gamma - \mu}{\alpha} \quad (\text{A.7})$$

Replacing  $E[m|m \geq Q]$  by the conditional sample mean  $\hat{E}[m|m \geq Q]$ , i.e. the observed upper tail market order distribution in the sample, one can construct update and break even moment conditions for GMM estimation which do not require a parametric assumption of market order sizes.

So far, the results are valid for an order book with a continuous price grid. We now focus on a specific offer side quote with price  $p_{+k}$  and corresponding limit order volume  $q_{+k}$ . Abstracting from the discreteness of limit order size shares and assuming that the execution probabilities for all units at the quote tick  $p_{+k}$  are identical, we calculate the expected profit of all limit orders with limit price  $p_{+k}$  by integrating the left hand side of equation, (A.4), viz<sup>17</sup>

$$\int_{Q_{+k-1}}^{Q_{+k}} (p_{+k} - \gamma - \alpha E[m|m \geq Q] - X - \mu) dQ \cdot P(m \geq Q_{+k-1}). \quad (\text{A.8})$$

Assuming exponentially distributed order sizes and subtracting quote specific fixed execution costs  $\xi$  yields the total expected profit of the limit order volume at price  $p_{+k}$ . Dividing by the volume at quote  $q_{+k}$ , yields the average expected profit per share at the  $+k$ th quote ,

$$\left( p_{+k} - X - \mu - \gamma - \frac{\xi}{q_{+k}} - \alpha(Q_{+k} + \lambda - \frac{q_{+k}}{2}) \right) \cdot P(m \geq Q_{+k-1}) \quad (\text{A.9})$$

In the main text we motivate that in an equilibrium the expected profit of any quote should be zero. This implies that

$$p_{+k} - X - \mu - \gamma - \frac{\xi}{q_{+k}} - \alpha(Q_{+k} + \lambda - \frac{q_{+k}}{2}) = 0. \quad (\text{A.10})$$

Reordering equation (A.10) yields of the average profit conditions (10) from which average break even and update conditions can be derived as described in the main text.

---

<sup>17</sup>The same result can be derived using the precise probabilities and a first-order Taylor approximation for the emerging exponential terms.

## References

- Ahn, H.-J., Bae K.-H., and K. Chan, 2001, Limit orders, depth, and volatility: Evidence from the stock exchange of Hong Kong, *Journal of Finance* 54, 767–788.
- Andrews, D. W. K., 1999, Consistent moment selection procedures for generalized method of moments estimation, *Econometrica* 67, 543–564.
- Bauwens, L., and P. Giot, 2001, *Econometric Modelling of Stock Market Intraday Activity* (Kluwer Academic Publishers).
- Beltran-Lopez, H., P. Giot, and J. Grammig, 2004, Commonalities in the order book, Mimeo, CORE, Universities of Louvain, Namur, and Tübingen.
- Biais, B., P. Hillion, and C. Spatt, 1995, An empirical analysis of the limit order book and the order flow in the Paris Bourse, *Journal of Finance* pp. 1655–1689.
- Boehmer, E., 2004, Dimensions of execution quality: Recent evidence for u.s. equity markets, EFA 2004 Working Paper Texas A&M University.
- Cao, C., O. Hansch, and X. Wang, 2004, The informational content of an open limit order book, EFA 2004 Working Paper, Penn State University and Southern Illinois University.
- Coppejans, M., I. Domowitz, and A. Madhavan, 2003, Dynamics of liquidity in an electronic limit order book market, Discussion paper Department of Economics, Duke University.
- Degryse, H., F. de Jong, M. Ravenswaaij, and G. Wuyts, 2003, Aggressive orders and the resiliency of a limit order market, Working Paper, K.U. Leuven, Department of Economics.
- DeJong, F., T. Nijman, and A. Roëll, 1996, Price effects of trading and components of the bid-ask spread on the Paris Bourse, *Journal of Empirical Finance* pp. 193–213.
- Dufour, A., and R.F. Engle, 2000, Time and the price impact of a trade, *Journal of Finance* 55(6), 2467–2499.
- Easley, D., N.M. Kiefer, M. O'Hara, and J. Paperman, 1996, Liquidity, information, and less-frequently traded stocks, *Journal of Finance* 51, 1405–1436.

- Foucault, T., 1999, Order flow composition and trading costs in a dynamic limit order market, *Journal of Financial Markets* 2, 99–134.
- , O. Kadan, and E. Kandel, 2003, Limit order book as a market for liquidity, Mimeo, HEC.
- Glosten, L., 1994, Is the electronic limit order book inevitable?, *Journal of Finance* 49, 1127–1161.
- Glosten, L.R., and L.E. Harris, 1988, Estimating the components of the bid-ask spread, *Journal of Financial Economics* 21, 123–142.
- Gomber, P., U. Schweickert, and E. Theissen, 2004, Zooming in on liquidity, EFA 2004 Working Paper, University of Bonn.
- Grammig, J., A. Heinen, and E. Reginfo, 2004, Trading activity and liquidity supply in a pure limit order book market, CORE Discussion Paper 58 Université Catholique de Louvain.
- Hall, A., N. Hautsch, and J. McCulloch, 2003, Estimating the intensity of buy and sell arrivals in a limit order book market, Mimeo, University of Technology, Sidney and University of Konstanz.
- Hall, A., and F. Peixe, 2001, A consistent method for the selection of relevant instruments, Working Paper, North Carolina State University.
- Hansen, L. P., 1982, Large sample properties of generalized method of moments estimators, *Econometrica* 50, 1029–1054.
- Hasbrouck, J., 1991, Measuring the information content of stock trades, *Journal of Finance* 46, 179–207.
- , 2004, Lecture notes for PhD seminar in empirical market microstructure, Stern School of Business, NYU.
- Irvine, P., G. Benston, and E. Kandel, 2000, Liquidity beyond the inside spread: measuring and using information in the limit order book, Mimeo, Goizueta Business School, Emory University, Atlanta.

- O'Hara, M., 1995, *Market Microstructure Theory* (Blackwell Publishers: Malden, MA).
- Parlour, C., 1998, Price dynamics in limit order markets, *Review of Financial Studies* pp. 789–816.
- Pascual, R., and D. Veredas, 2004, What pieces of limit order book information are informative? an empirical analysis of a pure order-driven market, Mimeo. Dept. of Business. Universidad de las Islas Baleares.
- Ranaldo, A., 2004, Order aggressiveness in limit order book markets, *Journal of Financial Markets* 7(1), 53–74.
- Sandas, P., 2001, Adverse selection and competitive market making: Empirical evidence from a limit order market, *Review of Financial Studies* 14, 705–734.
- SEC, 2001, Report on the comparison of order executions across equity market structures, Office of Economic Analysis United States Securities and Exchange Commission Working Paper.
- Seppi, D., 1997, Liquidity provision with limit orders and a strategic specialist, *Review of Financial Studies* 10, 103–150.

| company name       | ticker symbol | turnover  | mkt. cap. | $\bar{m}$ | % aggr. trades | trades per day | LO sub. | LO canc. | $\bar{P}$ | eff. spread | real. spread |
|--------------------|---------------|-----------|-----------|-----------|----------------|----------------|---------|----------|-----------|-------------|--------------|
| TUI                | TUI           | 26281175  | 2025      | 24723     | 17.6           | 1063           | 6767    | 5714     | 18.7      | 0.125       | 0.015        |
| CONTINENTAL        | CONT          | 25627638  | 4060      | 25574     | 13.5           | 1002           | 8036    | 7052     | 31.6      | 0.092       | -0.011       |
| MAN                | MAN           | 27685031  | 2434      | 26189     | 13.0           | 1057           | 7214    | 6235     | 27.7      | 0.096       | 0.003        |
| METRO              | MEO           | 38874669  | 5018      | 31480     | 15.7           | 1235           | 7975    | 6702     | 35.0      | 0.089       | 0.000        |
| LINDE              | LIN           | 22378772  | 3448      | 24971     | 15.8           | 896            | 8342    | 7454     | 43.6      | 0.080       | -0.009       |
| LUFTHANSA          | LHA           | 43946809  | 4548      | 32504     | 11.9           | 1352           | 8079    | 6780     | 14.2      | 0.111       | 0.022        |
| FRESENIUS          | FME           | 12850947  | 1944      | 20680     | 16.7           | 621            | 5764    | 5195     | 54.0      | 0.098       | 0.010        |
| THYSSEN-KRUPP      | TKA           | 37892493  | 6450      | 30017     | 11.3           | 1262           | 7864    | 6672     | 15.9      | 0.111       | 0.029        |
| DEUTSCHE POST      | DPW           | 43836617  | 6806      | 33330     | 11.0           | 1315           | 6861    | 5666     | 18.2      | 0.097       | 0.018        |
| BAY.HYPO-VEREINSB. | HVM           | 98351090  | 6629      | 50783     | 15.0           | 1937           | 10204   | 8293     | 18.7      | 0.098       | 0.019        |
| COMMERZBANK        | CBK           | 53171668  | 7569      | 36659     | 12.6           | 1450           | 11922   | 10476    | 15.4      | 0.100       | 0.023        |
| ADIDAS-SALOMON     | ADS           | 31976047  | 4104      | 32635     | 20.1           | 980            | 8057    | 7105     | 92.6      | 0.070       | -0.002       |
| DEUTSCHE BOERSE    | DB1           | 35696903  | 4847      | 36359     | 18.4           | 982            | 6598    | 5698     | 46.9      | 0.075       | 0.003        |
| HENKEL             | HEN3          | 18174548  | 3682      | 25904     | 16.6           | 702            | 7989    | 7306     | 65.9      | 0.077       | 0.005        |
| ALTANA             | ALT           | 30985416  | 3338      | 28310     | 18.9           | 1095           | 7718    | 6609     | 48.6      | 0.079       | 0.008        |
| SCHERING           | SCH           | 51413053  | 7055      | 33756     | 16.2           | 1523           | 9111    | 7669     | 40.8      | 0.071       | 0.004        |
| INFINEON           | IFX           | 146462315 | 4790      | 52331     | 8.6            | 2799           | 10320   | 7744     | 11.6      | 0.104       | 0.040        |
| BAYER              | BAY           | 88776121  | 15911     | 36994     | 12.4           | 2400           | 15258   | 12988    | 23.1      | 0.076       | 0.012        |
| RWE                | RWE           | 97655566  | 12653     | 42203     | 13.0           | 2314           | 14438   | 12355    | 33.8      | 0.062       | 0.002        |
| BMW                | BMW           | 87854358  | 12211     | 41639     | 14.4           | 2110           | 14736   | 12764    | 34.7      | 0.060       | 0.003        |
| VOLKSWAGEN         | VOW           | 104249843 | 9688      | 40963     | 16.0           | 2545           | 13474   | 11273    | 39.2      | 0.056       | 0.004        |
| BASF               | BAS           | 124434537 | 25425     | 48236     | 13.8           | 2580           | 18211   | 15898    | 43.3      | 0.051       | 0.002        |
| SAP                | SAP           | 184628162 | 27412     | 65795     | 21.9           | 2806           | 19733   | 17095    | 131.5     | 0.049       | 0.001        |
| E.ON               | EOA           | 160625983 | 33753     | 55950     | 13.6           | 2871           | 18899   | 16468    | 52.5      | 0.048       | 0.003        |
| MUENCH.RUECK       | MUV2          | 207353230 | 16396     | 60534     | 20.7           | 3425           | 20154   | 16894    | 93.9      | 0.049       | 0.005        |
| DAIMLERCHRYSLER    | DCX           | 187737846 | 30316     | 56736     | 14.5           | 3309           | 18722   | 15919    | 36.4      | 0.055       | 0.010        |
| DEUTSCHE TELEKOM   | DTE           | 350627866 | 34858     | 78884     | 5.0            | 4445           | 14498   | 11009    | 15.7      | 0.072       | 0.031        |
| DEUTSCHE BANK      | DBK           | 309282831 | 38228     | 78083     | 19.3           | 3961           | 23169   | 19772    | 67.2      | 0.044       | 0.004        |
| ALLIANZ            | ALV           | 289980556 | 33805     | 64114     | 21.4           | 4523           | 29791   | 25882    | 100.1     | 0.049       | 0.010        |
| SIEMENS            | SIE           | 321704299 | 52893     | 72831     | 16.7           | 4418           | 23659   | 19920    | 64.0      | 0.041       | 0.006        |
| Average            |               | 108683880 | 14076     | 42972     | 15.2           | 2099           | 12785   | 10887    | 44.5      |             |              |

Table 1: Sample descriptives. *Mkt. cap.* is the market capitalization in million euros at the end of December 2003,  $\bar{m}$  is the average trade size (in euros). *%Aggr. trades* gives the percentage of total trading volume that has not been executed at the best prices (that is, the order walked up the book). *Turnover* is the average trading volume in euros per trading day, *trades per day* is the average number of trades per day, *LO sub.* and *LO canc.*, respectively, denote the average number of non-marketable limit order submissions and cancellations per day.  $\bar{P}$ , *eff. spread* and *real. spread* refer to the sample averages of midquote, effective spread and realized spread, respectively. The average effective spread is computed by taking two times the absolute difference of the transaction price of a trade and the prevailing midquote and averaging over all trades of a stock. The average realized spread is computed similarly, but instead of taking the prevailing midquote, we use the midquote five minutes after the trade. To ensure comparability across stocks, we compute effective and realized spreads relative to the midquote prevailing at the time of the trade and multiply by 100 to obtain a % figure. The table is sorted in descending order by the difference of effective and realized spread. The sample ranges from January 2, 2004 to March 31, 2004.

| ticker | $\alpha$          | $\gamma$          | $\lambda$         | $\mu$            | $J(9)$ | $p$ -value |
|--------|-------------------|-------------------|-------------------|------------------|--------|------------|
| LIN    | 0.0178<br>(148.3) | -0.0182<br>(56.1) | 0.5724<br>(162.1) | 0.0003<br>(2.7)  | 0.2    | 1.000      |
| FME    | 0.0332<br>(105.5) | -0.0227<br>(31.8) | 0.3840<br>(118.3) | 0.0000<br>(0.1)  | 0.6    | 1.000      |
| LHA    | 0.0014<br>(258.7) | -0.0071<br>(80.7) | 2.3132<br>(174.6) | 0.0001<br>(3.8)  | 5.2    | 0.819      |
| MEO    | 0.0096<br>(190.4) | -0.0147<br>(68.0) | 0.9055<br>(196.0) | 0.0000<br>(0.2)  | 7.8    | 0.557      |
| HEN3   | 0.0329<br>(122.2) | -0.0182<br>(38.4) | 0.3938<br>(139.5) | -0.0002<br>(1.6) | 7.9    | 0.540      |
| DPW    | 0.0017<br>(235.9) | -0.0067<br>(65.1) | 1.8322<br>(175.4) | -0.0001<br>(2.6) | 8.7    | 0.464      |
| MAN    | 0.0066<br>(144.7) | -0.0130<br>(53.7) | 0.9432<br>(162.9) | 0.0003<br>(4.4)  | 15.0   | 0.090      |
| TUI    | 0.0041<br>(176.8) | -0.0098<br>(55.0) | 1.3189<br>(149.6) | -0.0001<br>(2.2) | 17.5   | 0.042      |
| CONT   | 0.0098<br>(148.2) | -0.0155<br>(59.8) | 0.8143<br>(168.0) | 0.0002<br>(2.0)  | 20.2   | 0.017      |
| ALT    | 0.0170<br>(170.0) | -0.0136<br>(52.0) | 0.5780<br>(170.6) | -0.0002<br>(1.7) | 25.7   | 0.002      |
| BMW    | 0.0039<br>(246.4) | -0.0096<br>(86.3) | 1.2012<br>(233.5) | -0.0001<br>(2.6) | 30.8   | 0.000      |
| DB1    | 0.0094<br>(151.5) | -0.0121<br>(43.4) | 0.7735<br>(137.4) | 0.0001<br>(1.0)  | 39.2   | 0.000      |
| ADS    | 0.0438<br>(147.5) | -0.0180<br>(35.5) | 0.3528<br>(163.6) | -0.0002<br>(1.0) | 61.9   | 0.000      |
| CBK    | 0.0011<br>(225.8) | -0.0047<br>(62.1) | 2.3990<br>(176.9) | 0.0000<br>(1.9)  | 63.8   | 0.000      |
| RWE    | 0.0040<br>(287.2) | -0.0101<br>(95.9) | 1.2440<br>(243.1) | 0.0001<br>(3.0)  | 97.3   | 0.000      |
| SCH    | 0.0078<br>(181.3) | -0.0103<br>(51.5) | 0.8237<br>(201.0) | 0.0000<br>(0.4)  | 119.6  | 0.000      |
| TKA    | 0.0019<br>(236.3) | -0.0072<br>(73.2) | 1.9002<br>(184.0) | 0.0000<br>(1.0)  | 137.6  | 0.000      |
| VOW    | 0.0046<br>(31.9)  | -0.0110<br>(15.5) | 1.0458<br>(230.5) | 0.0001<br>(0.1)  | 194.8  | 0.000      |
| BAS    | 0.0043<br>(313.1) | -0.0086<br>(92.1) | 1.1199<br>(277.7) | 0.0000<br>(0.8)  | 279.6  | 0.000      |
| IFX    | 0.0003<br>(364.2) | -0.0032<br>(84.6) | 4.5261<br>(195.8) | 0.0000<br>(0.2)  | 306.4  | 0.000      |
| DTE    | 0.0002<br>(537.6) | -0.0013<br>(57.2) | 5.0455<br>(259.4) | 0.0000<br>(0.1)  | 319.4  | 0.000      |
| DCX    | 0.0023<br>(270.0) | -0.0058<br>(64.6) | 1.5617<br>(288.4) | 0.0001<br>(5.5)  | 325.2  | 0.000      |
| BAY    | 0.0020<br>(335.7) | -0.0048<br>(76.9) | 1.6328<br>(261.7) | 0.0000<br>(1.3)  | 431.6  | 0.000      |
| HVM    | 0.0010<br>(166.4) | -0.0037<br>(41.3) | 2.8319<br>(165.8) | 0.0000<br>(0.6)  | 483.7  | 0.000      |
| EOA    | 0.0047<br>(301.7) | -0.0075<br>(75.6) | 1.0663<br>(284.5) | 0.0000<br>(0.8)  | 552.4  | 0.000      |
| SAP    | 0.0297<br>(287.9) | -0.0153<br>(58.3) | 0.5022<br>(275.5) | 0.0005<br>(5.0)  | 1094.1 | 0.000      |
| MUV2   | 0.0140<br>(272.1) | -0.0108<br>(63.6) | 0.6467<br>(285.4) | 0.0000<br>(0.7)  | 1110.4 | 0.000      |
| DBK    | 0.0051<br>(359.7) | -0.0066<br>(71.4) | 1.1503<br>(297.3) | 0.0000<br>(0.7)  | 1997.7 | 0.000      |
| ALV    | 0.0146<br>(322.1) | -0.0088<br>(52.7) | 0.6439<br>(335.7) | -0.0002<br>(4.0) | 2041.7 | 0.000      |
| SIE    | 0.0042<br>(408.6) | -0.0050<br>(56.8) | 1.1429<br>(339.2) | 0.0001<br>(1.9)  | 3323.0 | 0.000      |

Table 2: First stage GMM results baseline specification.  $2 \times 4$  quotes from the bid and ask side of the complete book (visible and hidden part) are used to construct update and break even conditions derived from the zero marginal expected profit condition as in Sandas (2001). The numbers in parentheses are  $t$ -values. The fifth and sixth column report the GMM  $J$  statistic and the associated  $p$ -value. The stocks are sorted by ascending  $p$ -value of the  $J$ -statistic.



| ticker | $\alpha$          | $\gamma$           | $\mu$            | $J(9)$ | $p$ -value |
|--------|-------------------|--------------------|------------------|--------|------------|
| FME    | 0.0210<br>(107.3) | -0.0149<br>(24.2)  | 0.0000<br>(0.2)  | 0.3    | 1.000      |
| HEN3   | 0.0242<br>(125.8) | -0.0138<br>(31.9)  | -0.0001<br>(1.0) | 6.2    | 0.715      |
| TUI    | 0.0031<br>(200.3) | -0.0100<br>(63.4)  | -0.0001<br>(1.8) | 12.6   | 0.183      |
| LIN    | 0.0138<br>(167.5) | -0.0160<br>(56.5)  | 0.0002<br>(2.3)  | 16.5   | 0.058      |
| ALT    | 0.0137<br>(190.9) | -0.0131<br>(56.5)  | -0.0001<br>(1.5) | 24.9   | 0.003      |
| BMW    | 0.0029<br>(272.2) | -0.0089<br>(87.0)  | -0.0001<br>(2.3) | 27.3   | 0.001      |
| VOW    | 0.0036<br>(40.3)  | -0.0116<br>(20.6)  | 0.0000<br>(0.1)  | 30.6   | 0.000      |
| DB1    | 0.0062<br>(141.8) | -0.0089<br>(32.8)  | 0.0001<br>(0.8)  | 39.2   | 0.000      |
| LHA    | 0.0011<br>(265.3) | -0.0072<br>(85.7)  | 0.0001<br>(3.2)  | 42.7   | 0.000      |
| SCH    | 0.0061<br>(209.4) | -0.0098<br>(56.8)  | 0.0000<br>(0.4)  | 45.1   | 0.000      |
| HVM    | 0.0008<br>(203.5) | -0.0058<br>(72.1)  | 0.0000<br>(0.4)  | 46.1   | 0.000      |
| ADS    | 0.0333<br>(164.2) | -0.0137<br>(31.7)  | -0.0001<br>(0.8) | 46.7   | 0.000      |
| MEO    | 0.0079<br>(208.8) | -0.0139<br>(71.4)  | 0.0000<br>(0.2)  | 54.2   | 0.000      |
| CONT   | 0.0074<br>(167.3) | -0.0135<br>(59.1)  | 0.0001<br>(1.8)  | 63.8   | 0.000      |
| RWE    | 0.0028<br>(287.7) | -0.0082<br>(84.3)  | 0.0001<br>(2.6)  | 94.9   | 0.000      |
| MAN    | 0.0052<br>(164.5) | -0.0127<br>(59.4)  | 0.0003<br>(4.0)  | 98.8   | 0.000      |
| DTE    | 0.0001<br>(604.0) | -0.0015<br>(72.0)  | 0.0000<br>(0.1)  | 232.8  | 0.000      |
| BAS    | 0.0032<br>(308.3) | -0.0069<br>(78.6)  | 0.0000<br>(0.4)  | 238.8  | 0.000      |
| IFX    | 0.0002<br>(440.7) | -0.0045<br>(123.2) | 0.0000<br>(0.1)  | 262.4  | 0.000      |
| DPW    | 0.0015<br>(271.7) | -0.0079<br>(81.3)  | -0.0001<br>(2.2) | 370.8  | 0.000      |
| CBK    | 0.0010<br>(270.4) | -0.0066<br>(91.5)  | 0.0000<br>(1.9)  | 420.6  | 0.000      |
| DCX    | 0.0016<br>(277.1) | -0.0045<br>(53.2)  | 0.0001<br>(3.7)  | 448.9  | 0.000      |
| BAY    | 0.0014<br>(305.2) | -0.0034<br>(54.6)  | 0.0000<br>(1.3)  | 524.8  | 0.000      |
| EOA    | 0.0033<br>(329.2) | -0.0054<br>(62.7)  | 0.0000<br>(0.5)  | 643.6  | 0.000      |
| SAP    | 0.0230<br>(320.7) | -0.0124<br>(54.4)  | 0.0003<br>(4.2)  | 690.2  | 0.000      |
| TKA    | 0.0016<br>(264.3) | -0.0080<br>(87.6)  | 0.0000<br>(0.9)  | 738.2  | 0.000      |
| MUV2   | 0.0103<br>(292.1) | -0.0090<br>(58.7)  | 0.0000<br>(0.4)  | 739.2  | 0.000      |
| DBK    | 0.0038<br>(390.3) | -0.0059<br>(70.6)  | 0.0000<br>(0.5)  | 1199.1 | 0.000      |
| ALV    | 0.0108<br>(346.4) | -0.0068<br>(44.0)  | -0.0001<br>(3.4) | 1617.4 | 0.000      |
| SIE    | 0.0034<br>(474.1) | -0.0051<br>(66.9)  | 0.0001<br>(1.7)  | 2080.3 | 0.000      |

Table 3: First stage GMM results for the nonparametric specification.  $2 \times 4$  quotes from the bid and ask side of the complete book (visible and hidden part) are used to construct update and break even conditions derived from the zero marginal expected profit condition as in Sandas (2001). For the construction of the moment conditions, the empirical distribution of the market order sizes is used instead of the exponential distribution. The stocks are sorted by ascending  $p$ -value of the  $J$ -statistic.

| ticker | $\alpha$          | $\gamma$          | $\lambda$         | $\xi$             | $\mu$            | $J(8)$ | $p$ -value | $\tau(\%)$ |
|--------|-------------------|-------------------|-------------------|-------------------|------------------|--------|------------|------------|
| HEN3   | 0.0427<br>(3.4)   | -0.0802<br>(0.9)  | 0.3938<br>(139.5) | 0.0082<br>(0.8)   | -0.0003<br>(0.9) | 0.0    | 1.000      | 0.0254     |
| IFX    | 0.0003<br>(263.8) | 0.0031<br>(25.2)  | 4.5261<br>(195.8) | -0.0044<br>(14.4) | 0.0000<br>(0.1)  | 0.2    | 1.000      | 0.0117     |
| DBK    | 0.0045<br>(147.6) | 0.0117<br>(23.0)  | 1.1503<br>(297.3) | -0.0026<br>(20.0) | 0.0000<br>(0.5)  | 0.2    | 1.000      | 0.0078     |
| TUI    | 0.0040<br>(156.6) | -0.0014<br>(2.7)  | 1.3189<br>(149.6) | -0.0002<br>(1.6)  | -0.0001<br>(2.3) | 0.4    | 1.000      | 0.0282     |
| FME    | 0.0393<br>(9.0)   | -0.0634<br>(1.8)  | 0.3840<br>(118.3) | 0.0056<br>(1.6)   | 0.0000<br>(0.0)  | 0.5    | 1.000      | 0.0279     |
| ADS    | 0.0423<br>(62.0)  | 0.0072<br>(1.5)   | 0.3528<br>(163.6) | -0.0008<br>(1.9)  | -0.0002<br>(1.0) | 0.6    | 1.000      | 0.0161     |
| SAP    | 0.0238<br>(40.8)  | 0.0452<br>(9.5)   | 0.5022<br>(275.5) | -0.0049<br>(9.1)  | 0.0004<br>(3.0)  | 0.7    | 1.000      | 0.0091     |
| LIN    | 0.0185<br>(92.1)  | -0.0157<br>(10.0) | 0.5724<br>(162.1) | 0.0013<br>(6.3)   | 0.0003<br>(2.7)  | 0.8    | 0.999      | 0.0243     |
| SIE    | 0.0037<br>(162.5) | 0.0113<br>(29.3)  | 1.1429<br>(339.2) | -0.0026<br>(23.7) | 0.0001<br>(1.7)  | 1.1    | 0.997      | 0.0066     |
| MUV2   | 0.0125<br>(135.8) | 0.0175<br>(16.1)  | 0.6467<br>(285.4) | -0.0026<br>(14.6) | 0.0000<br>(0.5)  | 1.4    | 0.994      | 0.0086     |
| HVM    | 0.0010<br>(120.0) | 0.0060<br>(15.2)  | 2.8319<br>(165.8) | -0.0032<br>(12.0) | 0.0000<br>(0.4)  | 1.6    | 0.991      | 0.0145     |
| DB1    | 0.0090<br>(93.6)  | 0.0040<br>(2.7)   | 0.7735<br>(137.4) | -0.0009<br>(3.8)  | 0.0001<br>(1.0)  | 2.9    | 0.938      | 0.0149     |
| ALV    | 0.0123<br>(112.7) | 0.0239<br>(21.4)  | 0.6439<br>(335.7) | -0.0033<br>(18.6) | -0.0002<br>(3.0) | 3.6    | 0.889      | 0.0079     |
| DCX    | 0.0022<br>(207.0) | 0.0037<br>(16.0)  | 1.5617<br>(288.4) | -0.0015<br>(15.7) | 0.0001<br>(4.6)  | 3.8    | 0.875      | 0.0094     |
| DTE    | 0.0002<br>(351.4) | 0.0042<br>(58.4)  | 5.0455<br>(259.4) | -0.0061<br>(19.2) | 0.0000<br>(0.0)  | 5.2    | 0.741      | 0.0064     |
| BAY    | 0.0019<br>(253.8) | 0.0032<br>(20.0)  | 1.6328<br>(261.7) | -0.0015<br>(17.8) | 0.0000<br>(1.1)  | 9.9    | 0.271      | 0.0132     |
| VOW    | 0.0045<br>(30.3)  | -0.0020<br>(1.3)  | 1.0458<br>(230.5) | -0.0001<br>(0.4)  | 0.0001<br>(0.1)  | 9.9    | 0.273      | 0.0120     |
| ALT    | 0.0167<br>(132.0) | 0.0000<br>(0.0)   | 0.5780<br>(170.6) | -0.0004<br>(2.6)  | -0.0002<br>(1.8) | 12.7   | 0.122      | 0.0200     |
| EOA    | 0.0042<br>(120.8) | 0.0076<br>(12.9)  | 1.0663<br>(284.5) | -0.0021<br>(12.7) | 0.0000<br>(0.6)  | 13.0   | 0.113      | 0.0085     |
| CONT   | 0.0099<br>(125.6) | -0.0110<br>(10.7) | 0.8143<br>(168.0) | 0.0015<br>(6.3)   | 0.0002<br>(2.0)  | 13.2   | 0.107      | 0.0253     |
| CBK    | 0.0011<br>(204.6) | 0.0019<br>(14.2)  | 2.3990<br>(176.9) | -0.0014<br>(13.7) | 0.0000<br>(1.6)  | 15.8   | 0.046      | 0.0171     |
| MAN    | 0.0067<br>(105.3) | -0.0096<br>(7.8)  | 0.9432<br>(162.9) | 0.0016<br>(5.3)   | 0.0003<br>(4.3)  | 18.5   | 0.018      | 0.0229     |
| BAS    | 0.0042<br>(247.1) | 0.0011<br>(5.0)   | 1.1199<br>(277.7) | -0.0008<br>(12.6) | 0.0000<br>(0.8)  | 20.8   | 0.008      | 0.0108     |
| MEO    | 0.0099<br>(142.1) | -0.0086<br>(10.1) | 0.9055<br>(196.0) | 0.0008<br>(4.9)   | 0.0000<br>(0.2)  | 30.6   | 0.000      | 0.0255     |
| SCH    | 0.0075<br>(140.7) | 0.0016<br>(2.8)   | 0.8237<br>(201.0) | -0.0007<br>(5.6)  | 0.0000<br>(0.4)  | 30.8   | 0.000      | 0.0152     |
| DPW    | 0.0018<br>(217.3) | -0.0005<br>(2.3)  | 1.8322<br>(175.4) | -0.0002<br>(1.8)  | -0.0001<br>(2.7) | 55.3   | 0.000      | 0.0182     |
| LHA    | 0.0014<br>(235.1) | -0.0008<br>(4.8)  | 2.3132<br>(174.6) | -0.0003<br>(4.0)  | 0.0001<br>(3.9)  | 63.5   | 0.000      | 0.0226     |
| BMW    | 0.0038<br>(222.2) | -0.0017<br>(7.1)  | 1.2012<br>(233.5) | -0.0001<br>(2.2)  | -0.0001<br>(2.7) | 130.5  | 0.000      | 0.0131     |
| RWE    | 0.0039<br>(265.5) | -0.0021<br>(10.4) | 1.2440<br>(243.1) | -0.0001<br>(0.9)  | 0.0001<br>(3.2)  | 181.8  | 0.000      | 0.0144     |
| TKA    | 0.0019<br>(214.8) | -0.0011<br>(5.7)  | 1.9002<br>(184.0) | 0.0000<br>(0.5)   | 0.0000<br>(1.1)  | 282.1  | 0.000      | 0.0226     |

Table 4: First stage GMM results based on average profit conditions instead of marginal profit conditions.  $2 \times 4$  quotes from the bid and ask side of the complete book (visible and hidden part) are used to construct average update and average break even conditions. The exponential assumption on the distribution of the trade size is maintained.  $\tau = \frac{\alpha \cdot \bar{m}}{\bar{P}}$ , where  $\bar{m}$  and  $\bar{P}$  denote stock specific sample averages of the non-signed trade sizes (number of shares) and the midquotes, respectively. The stocks are sorted by ascending  $p$ -value of the  $J$ -statistic.

| liquidity variable   | correlation | $p$ -value |
|----------------------|-------------|------------|
| quoted spread (%)    | 0.8968      | < .0001    |
| effective spread (%) | 0.7738      | < .0001    |
| realized spread (%)  | -0.0772     | 0.685      |
| BLM                  | 0.9816      | < .0001    |

Table 5: Correlation of standardized adverse selection component  $\tau$  with liquidity indicators. The table reports the cross sectional Spearman rank correlations of the standardized adverse selection component  $\tau$  with a quoted, effective and realized spread. Buy and sell side book liquidity are measured by computing the ratio of a unit price of a hypothetical buy or sell of 100,000 euros and the best available quote on the respective side. We subtract one and multiply the result by 10000. To obtain stock specific measures we take averages over all order book snapshots. Taking absolute values and averaging over the buy and sell side measure, we obtain the book liquidity measure (BLM) used to compute the correlation.

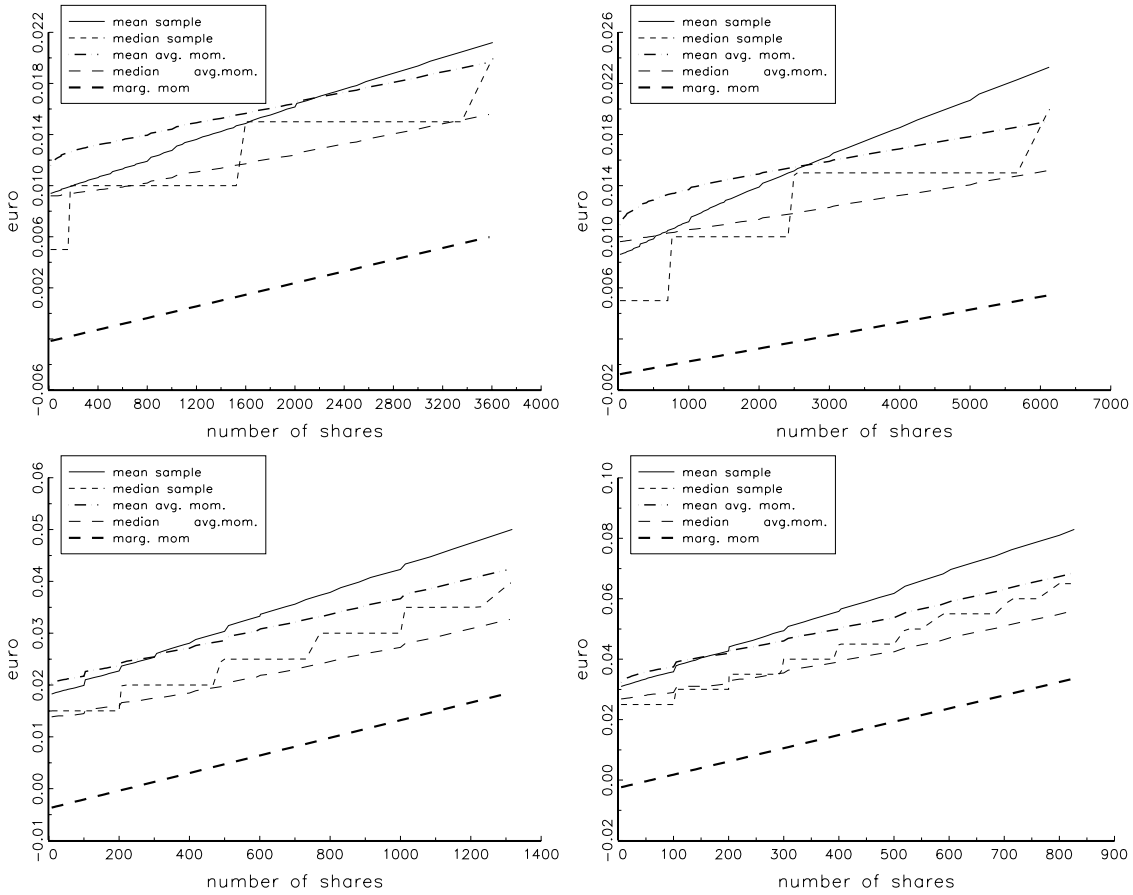


Figure 1: Comparison of implied and observed price schedules The figure depicts means and medians of implied and observed bid side price schedules of four selected stocks. In each figure the values on the horizontal axis show trade volumes (number of shares) up to the 0.9 quantile of the respective stock. The vertical axis show the per share price decrease that a sell trade of a given volume would incur if it were executed against the current book. The solid line depicts sample means and the short dashed lines sample medians computed by using all order book snapshots during the three month period. The bold long-dashed lines depict the mean slope implied by the estimation results reported in table 2 (baseline model that uses marginal break even and update conditions). The dash-dot lines and the long-dashed lines are the mean and the median of the book slope as implied by the estimation results reported in table 4 (revised specification which uses average break even and update restrictions). The stock in the left upper panel is Daimler Chrysler (DCX, from the largest trade volume quartile), the stock in the right upper panel is Bay. Hypo Vereinsbank (HVM, second volume quartile), the stock in the left lower panel is Altana (ALT, third volume quartile) and the stock in the right lower panel is Addidas (ADS, fourth volume quartile).

CFR working papers are available for download from [www.cfr-cologne.de](http://www.cfr-cologne.de).

hardcopies can be ordered from: centre for financial research (CFR),  
Albertus Magnus Platz, 50923 Koeln, Germany.

**2011**

| No.   | Author(s)                       | Title   |
|-------|---------------------------------|---|
| 11-09 | V. Agarwal, S. Ray              | Determinants and Implications of Fee Changes in the Hedge Fund Industry                     |
| 11-08 | G. Cici, L.-F. Palacios         | On the Use of Options by Mutual Funds: Do They Know What They Are Doing?                    |
| 11-07 | V. Agarwal, G. D. Gay, L. Ling  | Window Dressing in Mutual Funds   |
| 11-06 | N. Hautsch, D. Hess, D. Veredas | The Impact of Macroeconomic News on Quote Adjustments, Noise, and Informational Volatility  |
| 11-05 | G. Cici                         | The Prevalence of the Disposition Effect in Mutual Funds' Trades                            |
| 11-04 | S. Jank                         | Mutual Fund Flows, Expected Returns and the Real Economy                                    |
| 11-03 | G.Fellner, E.Theissen           | Short Sale Constraints, Divergence of Opinion and Asset Value: Evidence from the Laboratory |
| 11-02 | S.Jank                          | Are There Disadvantaged Clienteles in Mutual Funds?   |
| 11-01 | V. Agarwal, C. Meneghetti       | The role of Hedge Funds as Primary Lenders  |

**2010**

| No.   | Author(s)                                  | Title   |
|-------|--|---|
| 10-20 | G. Cici, S. Gibson, J.J. Merrick Jr.       | Missing the Marks? Dispersion in Corporate Bond Valuations Across Mutual Funds            |
| 10-19 | J. Hengelbrock, E. Theissen, Ch. Westheide | Market Response to Investor Sentiment   |
| 10-18 | G. Cici, S. Gibson                         | The Performance of Corporate-Bond Mutual Funds: Evidence Based on Security-Level Holdings |
| 10-17 | D. Hess, D. Kreuzmann, O. Pucker           | Projected Earnings Accuracy and the Profitability of Stock Recommendations                |
| 10-16 | S. Jank, M. Wedow                          | Sturm und Drang in Money Market Funds: When Money Market Funds Cease to Be Narrow         |

|       |   |   |
|-------|---|---|
| 10-15 | G. Cici, A. Kempf, A. Puetz                           | Caught in the Act:<br>How Hedge Funds Manipulate their Equity Positions                             |
| 10-14 | J. Grammig, S. Jank                                   | Creative Destruction and Asset Prices   |
| 10-13 | S. Jank, M. Wedow                                     | Purchase and Redemption Decisions of Mutual Fund Investors and the Role of Fund Families            |
| 10-12 | S. Artmann, P. Finter, A. Kempf, S. Koch, E. Theissen | The Cross-Section of German Stock Returns: New Data and New Evidence                                |
| 10-11 | M. Chesney, A. Kempf                                  | The Value of Tradeability   |
| 10-10 | S. Frey, P. Herbst                                    | The Influence of Buy-side Analysts on Mutual Fund Trading   |
| 10-09 | V. Agarwal, W. Jiang, Y. Tang, B. Yang                | Uncovering Hedge Fund Skill from the Portfolio Holdings They Hide                                   |
| 10-08 | V. Agarwal, V. Fos, W. Jiang                          | Inferring Reporting Biases in Hedge Fund Databases from Hedge Fund Equity Holdings                  |
| 10-07 | V. Agarwal, G. Bakshi, J. Huij                        | Do Higher-Moment Equity Risks Explain Hedge Fund Returns?   |
| 10-06 | J. Grammig, F. J. Peter                               | Tell-Tale Tails   |
| 10-05 | K. Drachter, A. Kempf                                 | Höhe, Struktur und Determinanten der Managervergütung- Eine Analyse der Fondsbranche in Deutschland |
| 10-04 | J. Fang, A. Kempf, M. Trapp                           | Fund Manager Allocation   |
| 10-03 | P. Finter, A. Niessen-Ruenzi, S. Ruenzi               | The Impact of Investor Sentiment on the German Stock Market   |
| 10-02 | D. Hunter, E. Kandel, S. Kandel, R. Wermers           | Endogenous Benchmarks   |
| 10-01 | S. Artmann, P. Finter, A. Kempf                       | Determinants of Expected Stock Returns: Large Sample Evidence from the German Market                |

## 2009

| No.   | Author(s)                           | Title  |
|-------|-------------------------------------|--|
| 09-17 | E. Theissen                         | Price Discovery in Spot and Futures Markets: A Reconsideration                 |
| 09-16 | M. Trapp                            | Trading the Bond-CDS Basis – The Role of Credit Risk and Liquidity             |
| 09-14 | A. Kempf, O. Korn, M. Uhrig-Homburg | The Term Structure of Illiquidity Premia                                       |
| 09-13 | W. Bühler, M. Trapp                 | Time-Varying Credit Risk and Liquidity Premia in Bond and CDS Markets          |
| 09-12 | W. Bühler, M. Trapp                 | Explaining the Bond-CDS Basis – The Role of Credit Risk and Liquidity          |
| 09-11 | S. J. Taylor, P. K. Yadav, Y. Zhang | Cross-sectional analysis of risk-neutral skewness                              |
| 09-10 | A. Kempf, C. Merkle, A. Niessen     | Low Risk and High Return - How Emotions Shape Expectations on the Stock Market |
| 09-09 | V. Fotak, V. Raman, P. K. Yadav     | Naked Short Selling: The Emperor`s New Clothes?                                |

|       |  |  |
|-------|--|--|
| 09-08 | F. Bardong, S.M. Bartram,<br>P.K. Yadav                | Informed Trading, Information Asymmetry and Pricing of<br>Information Risk: Empirical Evidence from the NYSE                                     |
| 09-07 | S. J. Taylor , P. K. Yadav,<br>Y. Zhang                | The information content of implied volatilities and model-free<br>volatility expectations: Evidence from options written on<br>individual stocks |
| 09-06 | S. Frey, P. Sandas                                     | The Impact of Iceberg Orders in Limit Order Books  |
| 09-05 | H. Beltran-Lopez, P. Giot,<br>J. Grammig               | Commonalities in the Order Book  |
| 09-04 | J. Fang, S. Ruenzi                                     | Rapid Trading bei deutschen Aktienfonds:<br>Evidenz aus einer großen deutschen Fondsgesellschaft   |
| 09-03 | A. Banegas, B. Gillen,<br>A. Timmermann,<br>R. Wermers | The Performance of European Equity Mutual Funds  |
| 09-02 | J. Grammig, A. Schrimpf,<br>M. Schuppli                | Long-Horizon Consumption Risk and the Cross-Section<br>of Returns: New Tests and International Evidence  |
| 09-01 | O. Korn, P. Koziol                                     | The Term Structure of Currency Hedge Ratios  |

## 2008

| No.   | Author(s)                                 | Title   |
|-------|---|---|
| 08-12 | U. Bonenkamp,<br>C. Homburg, A. Kempf     | Fundamental Information in Technical Trading Strategies                                     |
| 08-11 | O. Korn                                   | Risk Management with Default-risky Forwards   |
| 08-10 | J. Grammig, F.J. Peter                    | International Price Discovery in the Presence<br>of Market Microstructure Effects           |
| 08-09 | C. M. Kuhnen, A. Niessen                  | Public Opinion and Executive Compensation   |
| 08-08 | A. Pütz, S. Ruenzi                        | Overconfidence among Professional Investors: Evidence from<br>Mutual Fund Managers          |
| 08-07 | P. Osthoff                                | What matters to SRI investors?  |
| 08-06 | A. Betzer, E. Theissen                    | Sooner Or Later: Delays in Trade Reporting by Corporate<br>Insiders                         |
| 08-05 | P. Linge, E. Theissen                     | Determinanten der Aktionärspräsenz auf<br>Hauptversammlungen deutscher Aktiengesellschaften |
| 08-04 | N. Hautsch, D. Hess,<br>C. Müller         | Price Adjustment to News with Uncertain Precision   |
| 08-03 | D. Hess, H. Huang,<br>A. Niessen          | How Do Commodity Futures Respond to Macroeconomic<br>News?                                  |
| 08-02 | R. Chakrabarti,<br>W. Megginson, P. Yadav | Corporate Governance in India   |
| 08-01 | C. Andres, E. Theissen                    | Setting a Fox to Keep the Geese - Does the Comply-or-Explain<br>Principle Work?             |

## 2007

| No. | Author(s) | Title |
|-----|-----------|-------|
|-----|-----------|-------|

|       |   |   |
|-------|---|---|
| 07-16 | M. Bär, A. Niessen,<br>S. Ruenzi        | The Impact of Work Group Diversity on Performance:<br>Large Sample Evidence from the Mutual Fund Industry         |
| 07-15 | A. Niessen, S. Ruenzi                   | Political Connectedness and Firm Performance:<br>Evidence From Germany  |
| 07-14 | O. Korn                                 | Hedging Price Risk when Payment Dates are Uncertain   |
| 07-13 | A. Kempf, P. Osthoff                    | SRI Funds: Nomen est Omen   |
| 07-12 | J. Grammig, E. Theissen,<br>O. Wuensche | Time and Price Impact of a Trade: A Structural Approach   |
| 07-11 | V. Agarwal, J. R. Kale                  | On the Relative Performance of Multi-Strategy and Funds of<br>Hedge Funds   |
| 07-10 | M. Kasch-Haroutounian,<br>E. Theissen   | Competition Between Exchanges: Euronext versus Xetra  |
| 07-09 | V. Agarwal, N. D. Daniel,<br>N. Y. Naik | Do hedge funds manage their reported returns?   |
| 07-08 | N. C. Brown, K. D. Wei,<br>R. Wermers   | Analyst Recommendations, Mutual Fund Herding, and<br>Overreaction in Stock Prices                                 |
| 07-07 | A. Betzer, E. Theissen                  | Insider Trading and Corporate Governance:<br>The Case of Germany  |
| 07-06 | V. Agarwal, L. Wang                     | Transaction Costs and Value Premium   |
| 07-05 | J. Grammig, A. Schrimpf                 | Asset Pricing with a Reference Level of Consumption:<br>New Evidence from the Cross-Section of Stock Returns      |
| 07-04 | V. Agarwal, N.M. Boyson,<br>N.Y. Naik   | Hedge Funds for retail investors?<br>An examination of hedged mutual funds  |
| 07-03 | D. Hess, A. Niessen                     | The Early News Catches the Attention:<br>On the Relative Price Impact of Similar Economic Indicators              |
| 07-02 | A. Kempf, S. Ruenzi,<br>T. Thiele       | Employment Risk, Compensation Incentives and Managerial<br>Risk Taking - Evidence from the Mutual Fund Industry - |
| 07-01 | M. Hagemeister, A. Kempf                | CAPM und erwartete Renditen: Eine Untersuchung auf Basis<br>der Erwartung von Marktteilnehmern                    |

## 2006

| No.   | Author(s)                           | Title   |
|-------|-------------------------------------|---|
| 06-13 | S. Čeljo-Hörhager,<br>A. Niessen    | How do Self-fulfilling Prophecies affect Financial Ratings? - An<br>experimental study    |
| 06-12 | R. Wermers, Y. Wu,<br>J. Zechner    | Portfolio Performance, Discount Dynamics, and the Turnover<br>of Closed-End Fund Managers |
| 06-11 | U. v. Lilienfeld-Toal,<br>S. Ruenzi | Why Managers Hold Shares of Their Firm: An Empirical<br>Analysis                          |
| 06-10 | A. Kempf, P. Osthoff                | The Effect of Socially Responsible Investing on Portfolio<br>Performance                  |
| 06-09 | R. Wermers, T. Yao,<br>J. Zhao      | The Investment Value of Mutual Fund Portfolio Disclosure                                  |
| 06-08 | M. Hoffmann, B. Kempa               | The Poole Analysis in the New Open Economy<br>Macroeconomic Framework                     |
| 06-07 | K. Drachter, A. Kempf,<br>M. Wagner | Decision Processes in German Mutual Fund Companies:<br>Evidence from a Telephone Survey   |




|       |  |   |
|-------|--|---|
| 06-06 | J.P. Krahnen, F.A. Schmid, E. Theissen | Investment Performance and Market Share: A Study of the German Mutual Fund Industry |
| 06-05 | S. Ber, S. Ruenzi                      | On the Usability of Synthetic Measures of Mutual Fund Net-Flows                     |
| 06-04 | A. Kempf, D. Mayston                   | Liquidity Commonality Beyond Best Prices  |
| 06-03 | O. Korn, C. Koziol                     | Bond Portfolio Optimization: A Risk-Return Approach                                 |
| 06-02 | O. Scaillet, L. Barras, R. Wermers     | False Discoveries in Mutual Fund Performance: Measuring Luck in Estimated Alphas    |
| 06-01 | A. Niessen, S. Ruenzi                  | Sex Matters: Gender Differences in a Professional Setting                           |

## 2005

| No.   | Author(s)  | Title  |
|-------|--|--|
| 05-16 | E. Theissen                                      | An Analysis of Private Investors' Stock Market Return Forecasts  |
| 05-15 | T. Foucault, S. Moinas, E. Theissen              | Does Anonymity Matter in Electronic Limit Order Markets  |
| 05-14 | R. Kosowski, A. Timmermann, R. Wermers, H. White | Can Mutual Fund „Stars“ Really Pick Stocks? New Evidence from a Bootstrap Analysis                         |
| 05-13 | D. Avramov, R. Wermers                           | Investing in Mutual Funds when Returns are Predictable   |
| 05-12 | K. Griese, A. Kempf                              | Liquiditätsdynamik am deutschen Aktienmarkt  |
| 05-11 | S. Ber, A. Kempf, S. Ruenzi                      | Determinanten der Mittelzuflüsse bei deutschen Aktienfonds   |
| 05-10 | M. Bär, A. Kempf, S. Ruenzi                      | Is a Team Different From the Sum of Its Parts? Evidence from Mutual Fund Managers                          |
| 05-09 | M. Hoffmann                                      | Saving, Investment and the Net Foreign Asset Position  |
| 05-08 | S. Ruenzi  | Mutual Fund Growth in Standard and Specialist Market Segments  |
| 05-07 | A. Kempf, S. Ruenzi                              | Status Quo Bias and the Number of Alternatives - An Empirical Illustration from the Mutual Fund Industry – |
| 05-06 | J. Grammig, E. Theissen                          | Is Best Really Better? Internalization of Orders in an Open Limit Order Book                               |
| 05-05 | H. Beltran, J. Grammig, A.J. Menkveld            | Understanding the Limit Order Book: Conditioning on Trade Informativeness                                  |
| 05-04 | M. Hoffmann                                      | Compensating Wages under different Exchange rate Regimes   |
| 05-03 | M. Hoffmann                                      | Fixed versus Flexible Exchange Rates: Evidence from Developing Countries                                   |
| 05-02 | A. Kempf, C. Memmel                              | On the Estimation of the Global Minimum Variance Portfolio   |
| 05-01 | S. Frey, J. Grammig                              | Liquidity supply and adverse selection in a pure limit order book market                                   |

**2004**

| No.   | Author(s)                                      | Title  |
|-------|--|--|
| 04-10 | N. Hautsch, D. Hess                            | Bayesian Learning in Financial Markets – Testing for the Relevance of Information Precision in Price Discovery |
| 04-09 | A. Kempf,<br>K. Kreuzberg                      | Portfolio Disclosure, Portfolio Selection and Mutual Fund Performance Evaluation                               |
| 04-08 | N.F. Carline, S.C. Linn,<br>P.K. Yadav         | Operating performance changes associated with corporate mergers and the role of corporate governance           |
| 04-07 | J.J. Merrick, Jr., N.Y.<br>Naik, P.K. Yadav    | Strategic Trading Behavior and Price Distortion in a Manipulated Market: Anatomy of a Squeeze                  |
| 04-06 | N.Y. Naik, P.K. Yadav                          | Trading Costs of Public Investors with Obligatory and Voluntary Market-Making: Evidence from Market Reforms    |
| 04-05 | A. Kempf, S. Ruenzi                            | Family Matters: Rankings Within Fund Families and Fund Inflows   |
| 04-04 | V. Agarwal,<br>N.D. Daniel, N.Y. Naik          | Role of Managerial Incentives and Discretion in Hedge Fund Performance   |
| 04-03 | V. Agarwal, W.H. Fung,<br>J.C. Loon, N.Y. Naik | Risk and Return in Convertible Arbitrage: Evidence from the Convertible Bond Market                            |
| 04-02 | A. Kempf, S. Ruenzi                            | Tournaments in Mutual Fund Families  |
| 04-01 | I. Chowdhury, M.<br>Hoffmann, A. Schabert      | Inflation Dynamics and the Cost Channel of Monetary Transmission   |



centre for financial research  
cfr/university of cologne  
albertus-magnus-platz  
D-50923 cologne  
fon +49(0)221-470-6995  
fax +49(0)221-470-3992  
kempf@cfr-cologne.de  
www.cfr-cologne.de