

Antonietti, Roberto; Antonioli, Davide

**Working Paper**

## Production Offshoring and the Skill Composition of Italian Manufacturing Firms: A Counterfactual Analysis

Nota di Lavoro, No. 97.2007

**Provided in Cooperation with:**

Fondazione Eni Enrico Mattei (FEEM)

*Suggested Citation:* Antonietti, Roberto; Antonioli, Davide (2007) : Production Offshoring and the Skill Composition of Italian Manufacturing Firms: A Counterfactual Analysis, Nota di Lavoro, No. 97.2007, Fondazione Eni Enrico Mattei (FEEM), Milano

This Version is available at:

<https://hdl.handle.net/10419/74177>

**Standard-Nutzungsbedingungen:**

Die Dokumente auf EconStor dürfen zu eigenen wissenschaftlichen Zwecken und zum Privatgebrauch gespeichert und kopiert werden.

Sie dürfen die Dokumente nicht für öffentliche oder kommerzielle Zwecke vervielfältigen, öffentlich ausstellen, öffentlich zugänglich machen, vertreiben oder anderweitig nutzen.

Sofern die Verfasser die Dokumente unter Open-Content-Lizenzen (insbesondere CC-Lizenzen) zur Verfügung gestellt haben sollten, gelten abweichend von diesen Nutzungsbedingungen die in der dort genannten Lizenz gewährten Nutzungsrechte.

**Terms of use:**

*Documents in EconStor may be saved and copied for your personal and scholarly purposes.*

*You are not to copy documents for public or commercial purposes, to exhibit the documents publicly, to make them publicly available on the internet, or to distribute or otherwise use the documents in public.*

*If the documents have been made available under an Open Content Licence (especially Creative Commons Licences), you may exercise further usage rights as specified in the indicated licence.*

**Production Offshoring and the Skill  
Composition of Italian  
Manufacturing Firms:  
A Counterfactual Analysis**

Roberto Antonietti and Davide Antonioli

NOTA DI LAVORO 97.2007

**NOVEMBER 2007**

KTHC – Knowledge, Technology, Human Capital

Roberto Antonietti, *Department of Economics “Marco Fanno”, University of Padua*  
Davide Antonioli, *Department of Economics, Institutions and Territory, University of Ferrara*

This paper can be downloaded without charge at:

The Fondazione Eni Enrico Mattei Note di Lavoro Series Index:  
<http://www.feem.it/Feem/Pub/Publications/WPapers/default.htm>

Social Science Research Network Electronic Paper Collection:  
<http://ssrn.com/abstract=1031086>

The opinions expressed in this paper do not necessarily reflect the position of  
Fondazione Eni Enrico Mattei  
Corso Magenta, 63, 20123 Milano (I), web site: [www.feem.it](http://www.feem.it), e-mail: [working.papers@feem.it](mailto:working.papers@feem.it)

# **Production Offshoring and the Skill Composition of Italian Manufacturing Firms: A Counterfactual Analysis**

## **Summary**

This work explores the effects of cross-border relocation of production on the skill composition of Italian manufacturing firms. Its aim is to assess if the firms' strategy to offshore production activities towards cheap labor countries determines a bias in the relative employment of skilled versus unskilled workers. Using a balanced panel of firm-based data across the period 1995-2003, we test this skill-bias hypothesis by means of a counterfactual experiment in which we employ a difference-in-differences propensity score matching estimator in order to control for selectivity bias without relying on a specific functional form of the relations of interest. In line with the literature, our results point to confirm a general, although weak, skill bias effect of production offshoring on the labor-force composition of Italian manufacturing: in particular, we find that firms farming out production stages in 1998-2000 show an upward shift in the skill ratio with respect to the counterfactual of firms not moving their production abroad. However, when we look at the single components of the skill ratio, we find that the skill bias effect is primarily driven by a fall in the employment of production workers, while a weak or not significant effect is found with respect to the employment of skilled personnel.

**Keywords:** Production Offshoring, Skill Bias, Difference-in-Differences, Propensity

**JEL Classification:** J24, F16, L24

*An earlier version of this paper has been presented at the II Workshop of the National Research Project (PRIN 2005) on "International fragmentation and local development: interpretative models and policy scenarios", Lecce , 26-27 January 2007, at the XVI AISSEC National Conference, Parma, 21-23 June 2007, at the X EUNIP International Conference, Prato 12-14 September 2007, and at the XII AIEL National Conference, Naples, 13-14 September 2007. We are grateful to Gilberto Antonelli, Guido Pellegrini, Paolo Pini and Lucia Tajoli for useful comments. Roberto Antonietti acknowledges with thanks the financial support of the School of Development Innovation and Change (SDIC) and Capitalia for the provision of the data sets. Usual disclaimer applies.*

*Address for correspondence:*

Roberto Antonietti  
Department of Economics "Marco Fanno"  
University of Padua  
Via del Santo 33  
PD 35123 Padua  
Italy  
Phone: +390498271508  
Fax: +390498274211  
E-mail: roberto.antonietti@unipd.it

# 1 Introduction

During the last three decades the way goods are manufactured has dramatically changed. Next to an extensive use of IT capital, imported materials, intermediate services and skilled labor, an increasing replacement of low-skill employment is occurring due to the fact that firms de-locate low-skill intensive activities towards less developed, cheap labor, countries. Trade flows, import competition and foreign direct investments (FDI), thus, result in a reorganization of production through which home firms can specialize on the high-value-added phases of production while economizing on production costs.

The international relocation of production and service activities has received a lot of attention in recent times, and often in relation to the increasing fear of domestic job losses, particularly concerning blue collars and low-skilled personnel. Traditionally, two main explanations have been given to account for the shift in demand away from low-skilled workers in industrialized countries. The first refers to non-neutral technological change that, by fostering the demand for more qualified workers within technologically advanced industries, tends either to increase the wage inequality in relatively flexible labor markets (like in the US and UK) or to increase the relative unemployment of less qualified workers in relatively more rigid ones (as in Germany, France, Denmark and Italy). The second claims for increased international trade and globalization of production, according to which labor is relocated in a way that determines a shift of redundant and routine activities toward less-developed countries, while keeping non-routine, high skill-intensive activities at home, thus increasing the domestic firms' comparative advantage in the production of high-value added goods.

However, recent international evidence (Mann, 2004; Brainard and Litan, 2004; Amiti and Wei, 2005) has also shown that the increasing digitization of production now enables firms not only to offshore pure manufacturing stages, but also service activities like software programming, medical diagnosis, lab research, product development and analytical activities, thus creating the conditions for the transfer of IT, knowledge-intensive, jobs.

Our contribution to the debate moves is twofold. First, differently from the main literature that generally puts the attention on the strategies of large multinational firms, we focus on a sample of small and medium firms located in Italy, i.e. firms that, although not being large multinationals, are

pushed by globalization to act in this way. Second, we test the skill-bias effect of production offshoring by setting up a counterfactual exercise based on difference-in-differences propensity score matching, thanks to which we can compare the skill composition of offshoring firms to a suitable counterfactual of non-offshoring firms, thus controlling for sample selection and unobserved heterogeneity and without relying on specific functional forms of the objective function.

The article is structured as follows. Section 2 briefly sketches the empirical literature developed around the skill-bias effects of international fragmentation, and production offshoring in particular. Section 3 describes data and the empirical methodology adopted. Section 4 presents and discusses the empirical evidence and section 5 concludes.

## 2 Background literature

Even if it has often been considered a 'hot topic' for both international trade and labor economists, the impact of globalization on the international division of labor and the employment and wage dynamics of workers is still ambiguous.

The question if the international relocation of production determines a change in the skill intensity of jobs is still unanswered, especially in Italy (Piva and Vivarelli, 2004): what seems clear is that such effect depends on the type of offshoring strategy adopted, the unit of analysis considered and the empirical methodology employed.

The literature on the skill composition effects of offshoring can be divided in two main lines of research, according to the theoretical perspective through which offshoring is conceived.

The first bulk of studies looks at offshoring as a foreign investment strategy of the firm, and, in this respect, distinguishes between vertical and horizontal FDI (Markusen, Konan, Venables, and Zhang, 1996; Lipsey, 2002). The former is mainly driven by the will of exploiting the differences in factors endowments and prices and leads to a net decrease in domestic employment (Agarwal, 1997; Braconier and Ekholm, 2000; Mariotti, Mutinelli, and Piscitello, 2003). The latter, instead, is driven by the will to replicate abroad the whole production process of the home country, with the aim of having access to new markets and global opportunities and with the effect of

increasing the skill intensity of domestic jobs and occupations (Markusen, Konan, Venables, and Zhang, 1996; Blömstrom, Fors, and Lipsey, 1997; Mariotti, Mutinelli, and Piscitello, 2003).

However, if the literature generally agrees on the total employment effects of FDI, less explored is the issue of the effect of FDI on the human capital composition of the workforce. The research question thus becomes: does investing in cheap-labor countries lead to a skill upgrading at home?

Head and Ries (2002) try to answer this question by looking at Japanese multinationals in the period 1965-1990: their results point to a positive relationship between offshoring and the demand for skilled labor only if production re-location is directed to developing countries and only when the unit of analysis is the single firm. Similarly, Hansson (2004) finds that production delocalization toward less developed countries contributes to the general increase in the average level of qualification within Swedish multinationals. For Italy, Barba-Navaretti and Castellani (2004) and Castellani, Mariotti, and Piscitello (2006) find a skill upgrading effect of foreign investments by multinationals primarily due to the international relocation of low value-added segments of the production process that leads to a lower demand for low-skill labor at home.

In contrast with these results, Slaughter (2000), looking at 32 US manufacturing industries in the 1980s, does not show clear results in favour of the positive relationship between FDI and the employment of skilled workers at home.

Another group of studies, instead, focuses on the trade dimension of offshoring and consider it as a strategy of international fragmentation of production. According to Jones and Kierzkowski (2001), international fragmentation can be thought as a process of splitting up and spread of previously integrated stages of production over an international network of production sites. More specifically, production offshoring refers to the de-localization of manufacturing activities toward a low-cost country or region<sup>1</sup>. To the extent that this practice determines a reorganization of the production process, it implies a labor recomposition within domestic firms.

The evidence available from international trade literature provides general support for the skill-biased nature of production relocation. Wood

---

<sup>1</sup>Alternatively, the Oxford English Dictionary defines offshoring as the action or practice of moving or basing a business operation abroad, usually to take advantage of lower costs (<http://dictionary.oed.com/>).

(1994), for instance, calculates that import competition determines a reduction in the demand for unskilled labor by 30% in 1990. On the same line are Sachs and Shatz (1994), who conclude that production internationalization exerts a double effect on overall labor composition: it is not only the cause of a general decrease in manufacturing but, together with technological change, is a determinant of the decline in the relative demand for low-skilled workers. Moreover, Feenstra and Hanson (1996) give some evidence that, for the period 1972-1990, international outsourcing is responsible of a 30% to 50% rise in the demand for skilled workers, and, thus, for a rise in income inequality.

For the UK, Anderton and Brenton (1999) estimate that, between 1970 and 1986, imports from low-wage countries determine a negative impact of about 40% on the wage-bill share and relative employment of low-skilled workers. This result is further reinforced by Hijzen, Görg, and Hine (2004), who show that, between 1982 and 1996, international outsourcing has a strong negative impact on the demand for semi-skilled and unskilled labor.

For France, Strauss-Khan (2003), using input-output tables and labor data, finds that the highly increasing vertical specialization, i.e. the share of imported inputs in production, is the main determinant of the sharp decline in the share of unskilled workers between 1977 and 1993, passed from -15% in the period 1977-85 to -25% between 1985 and 1993.

For Austria, instead, a positive and significant effect on skills comes out only for proxies of international trade like export openness and outsourcing, while a negative effect arises when considering import penetration (Dell'mour, Egger, Gugler, and Pfaffermeyr, 2000).

For the Italian case, the scanty evidence seems to support the positive relationship between skills demand and offshoring. Helg and Tajoli (2005) compare the effect of international fragmentation of production on the skill ratio in Italy and in Germany and show that a positive and significant impact emerges only for the former, while for the latter a negative effect seems to prevail<sup>2</sup>.

Concluding, the most recent literature on skill-bias international frag-

---

<sup>2</sup>Similar results for the German case emerge also in Fitzenberger (1999) and Falk and Koebel (2000), who find no evidence that international outsourcing of production and services positively affect the skill composition of manufacturing workforce. Rather, Fitzenberger leaves technology the dominant role in shifting away the employment of unskilled workers.

mentation of production seems to generally stress the negative impact of production offshoring on the employment and pay of unskilled relative to skilled workers. However, what also emerges is that country-specific effects, together with different measurement and econometric techniques, matter in explaining these effects. Indeed, whether international delocalization is a sufficiently large phenomenon in order to account for any economically significant skill-bias effects is, therefore, an empirical matter.

### 3 Methodology and data

#### 3.1 Empirical methodology

Empirical studies testing for the skill-biased international trade are generally based on the estimation of labour demand equations, typically in a transcendental logarithmic form (Christensen, Jorgenson, and Lau, 1973; Berman, Bound, and Griliches, 1994).

However useful, this approach suffers a major limitation. It relies on a “simple” cost function framework, which is subject to a set of *ad hoc* restrictions in order to assure its tractability: optimization restriction, homogeneity assumptions and the specific functional form that constraints the parameters to assume specific values. Furthermore, limited information is usually provided on labour composition and firms characteristics, these latter being particularly important if one believes that firms endogenously choose to invest abroad by looking, for instance, at previous experience and at the composition of its internal assets. Thus, a possible problem of sample selection may arise, according to which the set of firms which decide to transfer production abroad cannot be thought as randomly drawn from the whole population.

In the following analysis, we employ a semi-parametric approach based on the Propensity Score Matching (PSM henceforth)(Rosenbaum and Rubin, 1983), developed within the evaluation literature in a context of observational data (Angrist, Imbens, and Rubin, 1996; Heckman, 1990, 1997; Heckman, Ichimura, and Todd, 1997; Heckman, Lalonde, and Smith, 1999; Sianesi, 2004; Wooldridge, 2001; Smith and Todd, 2005). The PSM is a more flexible technique with respect to standard labour demand estimation, because it does not force the imposition of a parametric specification and it



allows to handle the selection bias along with the problem of (time-invariant) unobserved heterogeneity. This can be achieved by exploiting the longitudinal structure of our data and by coupling the PSM with a difference-in-differences (DID) approach.

Operationally, the Difference-In-Differences-Propensity Score Matching (DID-PSM henceforth) method consists in a two step procedure. For our purpose, we estimate, at first, the probability of being an offshoring firm (the propensity score) conditional on the vector of characteristics  $X^3$ , through a logit regression. The  $X$ s are supposed not only to affect the firm's decision to offshore production, but also to have an influence on the dependent variable, i.e. the skill composition of the labor force.

After having tested the balancing property by employing the algorithm developed by Becker and Ichino (2002)(see Table A2 in the Appendix), at the second stage, we use the propensity score to estimate the average treatment effect on the treated (ATT). In our case the outcome variables are the DID, in levels, of the skill ratio of the workforce and the DID, in levels, of each occupational category over total employment. The algorithm adopted in the PSM procedure is the Epanechnikov kernel (KPSM). The implementation of the KPSM allows us to use the weighted averages of all the counterfactual firms (on the common support) to construct the counterfactual outcome (Smith and Todd, 2005; Caliendo and Kopeinig, 2005; Caliendo, Hujer, and Thomsen, 2005).

The ATT is then computed in the following way:

$$A\hat{T}T = \frac{1}{N_t} \sum_{i=1}^{N_t} (\Delta Y_i^t - \sum_{j=1}^{N_t} W(i, j) \Delta Y_i^c) \quad (1)$$

where  $N_t$  is the number of delocalizing firms and  $\Delta Y$  is the difference between the outcome variables (i.e. the skill ratios or the single occupational categories) before and after the treatment period, and  $W$  is the weight assigned to each counterfactual unit in the construction of the counterfactual outcome.

The main aim of the DID-PSM method is to generate a set of non-offshoring (not treated) firms as much similar as possible to the offshoring (treated) ones in order to get a proxy of what would have happened to domestic skill composition within offshoring firms if they had not chosen to

---

<sup>3</sup>For a description of the variables used in the analysis see Table A1 in the Appendix

displace activities outside national borders, and then testing whether the outcome of the offshoring firms significantly differ from that of the counterfactual set<sup>4</sup>.

### 3.2 The dataset

The dataset consists in a sample of Italian manufacturing firms drawn from the VII, VIII and IX waves of the Survey on Manufacturing Firms (*Indagine sulle Imprese Manifatturiere*) provided by Capitalia (ex Mediocredito Centrale) and covering the period 1995-2003. Interviews have been conducted respectively in 1998, 2001 and 2004 for the three surveys over all firms with more than 500 employees and over a representative sample of firms with more than 11 and less than 500 employees, stratified by geographical area, sector of economic activity and size. The three waves, 1995-1997, 1998-2000 and 2001-2003 gather information on 4.497, 4.680 and 4.289 units respectively.

In order to have a balanced panel, we first merge the three waves, so to get a sample of 414 firms always present in each time span (Table 1). Sixteen (3.8%) out of 414 are offshoring firms in 1998-2000, which represents a slightly overrepresented sample with respect to the percentage (1.9%) that emerges from the VIII Survey on Manufacturing Firms (Capitalia, 2001). In order to avoid bad matches in the construction of the counterfactual, we further dropped the firms classified into Scale intensive and Science based Pavitt sectors (Pavitt, 1984), because, in our sample, such sectors lack of offshoring firms<sup>5</sup>. For the same reason, we also excluded other groups of firms potentially conducive to misleading results. Specifically, we dropped those firms having systematic missing values in balance sheets data, those having undergone takeovers or break-ups (the jump/fall in employment could heavily affect our skill ratio outcome variable) and, finally, those which have (likely) delocalized production phases before and after 1998-2000. After this procedure we end up with a panel of 184 firms suitable for the analysis.

As it can be noted in the Table 1, the major part of the firms in our final sample is of small and medium size (93.5%): this is in line with the neat

---

<sup>4</sup>The works of Caliendo and Kopeinig (2005) and Smith and Todd (2005), among others, provide useful details about the matching procedure and its specific implementations.

<sup>5</sup>This is in line with Capitalia (2001) and Fortis (2005), who find that the sectors most involved in offshoring practices are textile and clothing, leather and shoes and machinery.

prevalence of such a typology of enterprises in the Italian manufacturing context. In Table 2 we note that only 7 out of the 184 firms (about 4%) have chosen to offshore production. Once again, despite the appearance, such a figure overestimates the percentage of offshoring firms within our final sample, when compared with the VIII Survey on Manufacturing Firms (Capitalia, 2001). However, an important aspect that should be stressed is that, as in the original 1998-2000 cross-section (in which the share of offshoring firms progresses along with their employment size), also in our final sample large firms show a higher propensity to shift production abroad than small and medium ones.

The limited number of offshoring firms does not represent a crucial issue when the matching procedure is applied<sup>6</sup>. What is more important is the dimension of the set of untreated units, which needs to be large enough in order to draw an appropriate counterfactual set. However, given the limited number of treated units, we cannot consider our sample as to be fully representative of the whole Italian manufacturing industry: rather, we consider it as a sort of “case study”.

Table 1: Sample structure by economic sector and employment size

<b>Pavitt Sectors</b>					
<b>Size</b>	Supplier Dominated	Specialized Suppliers	Scale Intensive	Science Based	Total
Small (10-49)	105	68	36	4	213
Medium (50-249)	66	50	18	3	137
Large (>250)	23	18	11	3	55
<b>Total</b>	<b>194</b>	<b>136</b>	<b>65</b>	<b>10</b>	<b>405*</b>
<b>Pavitt Sectors</b>					
<b>Size</b>	Supplier Dominated	Specialized Suppliers			Total
Small (10-49)	79	38			117
Medium (50-249)	36	19			55
Large (>250)	8	4			12
<b>Total</b>	<b>123</b>	<b>61</b>			<b>184</b>

\*Note: The 9 missing values are due to the lack of observations reporting the Pavitt classification

<sup>6</sup>If the treated units in the sample were a representative set of the treated in the population it would be possible to generalize the results, if they are not representative as in the present case it is still possible to consistently verify the impact of the treatment on the treated without generalizing the results on a national level.

Table 2: Production offshoring by Pavitt sectors and employment size

<b>Offshoring</b>	<b>Num. Obs.</b>	<b>Frequency</b>		
No	177	96.2		
Yes	7	3.8		
<b>Total</b>	184	100.0		
<b>Offshoring</b>	<b>Supplier Dominated</b>	<b>Specialized Suppliers</b>	<b>Total</b>	
No	119	58	177	
Yes	4	3	11	
<b>Total</b>	125	63	184	
<b>Offshoring</b>	<b>Small (10-49)</b>	<b>Medium (50-249)</b>	<b>Large (&gt;250)</b>	<b>Total</b>
No	113	54	10	177
Yes	4	1	2	7
<b>Total</b>	117	55	12	184

### 3.3 Empirical evidence

A preliminary look at the evidence provided by the trends in the workforce composition for non-offshoring and offshoring firms, before and after the years (1998-2000) in which delocalization takes place (Figure 1), seems to support the rationale behind our analysis. In fact, it is possible to recognize an almost parallel dynamics of the workforce occupational categories and of the skill ratio variable for offshoring and non-offshoring firms before 1998-2000. This finding supports the validity of the identification assumption<sup>7</sup> at the basis of the DID implementation stating that in the absence of the treatment the outcome of the treated and untreated units would have followed parallel paths over time. On the contrary, the different behaviour of the two sets of firms in terms of workforce trend, after 1998-2000, is pretty clear.

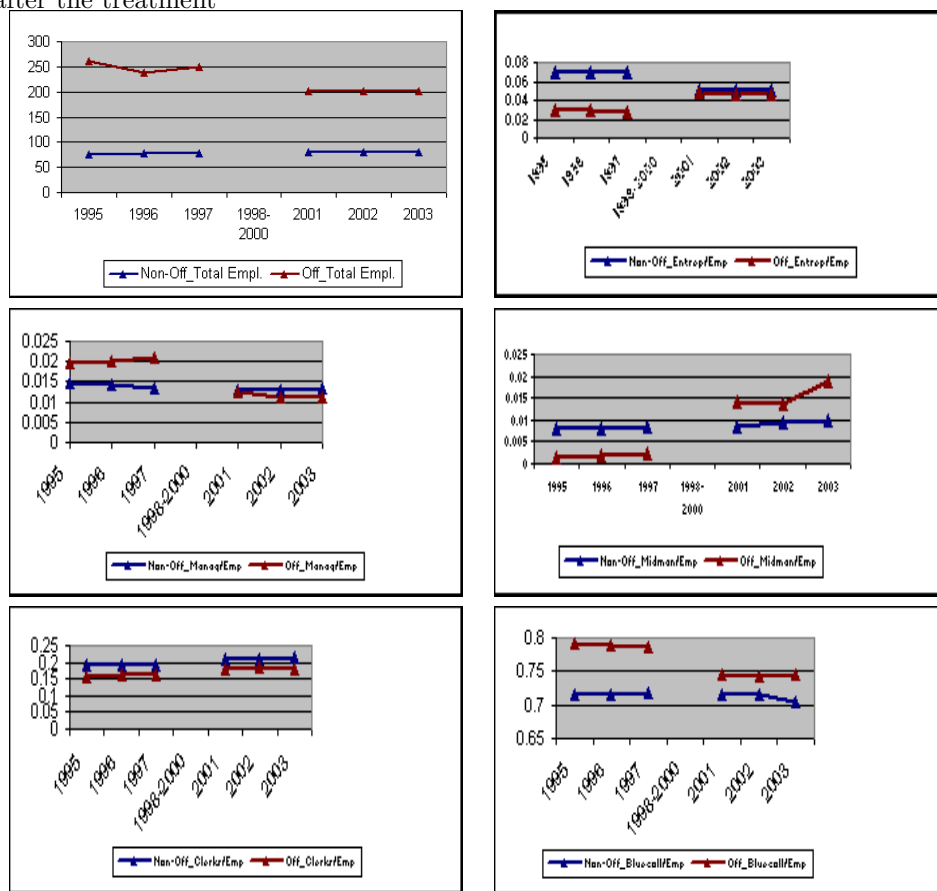
Total employment jumped down for offshoring firms after 1998-2000, while it remains steady for non-offshoring ones. The further decomposition of employment by occupational categories also reveals interesting dynamics. Specifically, for offshoring firms, the share of blue collars on total employment shifts down from the period before to the period after the treatment. On the contrary, the shares of the other occupational categories, which can

<sup>7</sup>The identification assumption which needs to hold for a consistent estimation of the ATT through the implementation of the DID-PSM may be expressed as:  $E[Y^0(t=1) - Y^0(t=0)|X, D=1] = E[Y^0(t=1) - Y^0(t=0)|X, D=0]$  where  $Y_0$  is the outcome of the untreated units,  $D$  is the binary variable that indicates the treatment,  $t$  represents the time ( $t=0$  before the treatment period and  $t=1$  after the treatment period),  $X$  is a vector of conditioning variables. If this assumption holds, it means that the average outcome for treated and untreated would have followed parallel paths in the absence of treatment conditional on the vector of observable characteristics  $X$ .

be put under the heading of non production workers, shift prevalently up after the treatment period for the offshoring firms. For non-offshoring firms we can note the almost unchanged average levels and trends of the occupational shares.

Such a graphical analysis may thus induce to assume that offshoring has a detrimental impact on production (unskilled) workers and a positive or null impact on the other occupational categories.

Figure 1: Occupational trends for offshoring and non-offshoring firms, before and after the treatment

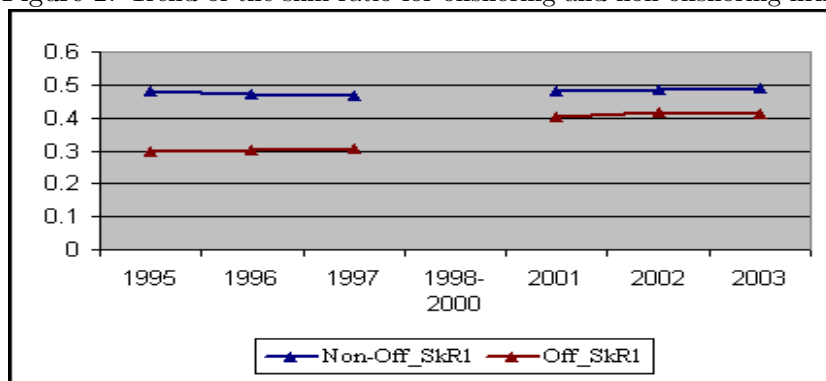


The evidence provided by the dynamic of the skill ratio also suggests a different behaviour in terms of the workforce composition between offshoring and non-offshoring firms in the period 1998-2000 (Figure 2).

In this case, it is clear how the skill ratio for the offshoring firms is higher in the period after 1998-2000 with respect to the skill ratio before the same period. For non-offshoring firms, on the opposite, the skill ratio remains sta-

ble around the same value for both the periods before and after 1998-2000<sup>8</sup>. Therefore, we can argue that the offshoring strategy may play some role in the occurrence of a process of convergence in the workforce composition between treated and untreated firms.

Figure 2: Trend of the skill ratio for offshoring and non offshoring firms



Turning now the attention to the estimation results, we investigate the impact, if any, of production offshoring on the skill composition within our sample of Italian manufacturing firms. As already mentioned, we look not only at the average treatment effect on the firms shifting production abroad, but we also control for the pre-treatment dynamics of the workforce skill composition by computing a difference-in-differences estimator.

In line with recent literature (Berman, Bound, and Griliches, 1994; Slaughter, 2000; Piva and Vivarelli, 2004; Bratti and Matteucci, 2005; Helg and Tajoli, 2005), we define skilled and unskilled workers in terms of non production and production workers respectively, and we compute our indicator as the ratio between the former and the latter. In addition, we look at the dynamics of each single occupational component of the skill ratio: in particular, we decompose the numerator of the skill ratio in three sub-components: the share of top managers, the share of middle managers and the share of clerks with respect to total employment, while, for the denominator, we look at the share of blue-collar workers on total employment.

Tables 3, 4, 5, 6 and 7 show the outcome of the estimations. The main result of the analysis is that we do find a slight skill-bias effect of production

<sup>8</sup>This also suggests that no major exogenous unobserved shocks potentially influencing the workforce skill composition occurred during the period 1998-2000.

offshoring: this is clear when we look at Table 3, in which the coefficients of the ATT are almost always positive and significant at 10%. The first row of the Table, in particular, shows that, on average, firms relocating part of their activities to cheap labor countries employ, in the post-treatment period, a higher relative share of skilled workers with respect to the counterfactual of firms that do not relocate production abroad. The other rows of the Table show, instead, the decomposition of this average effect into the difference between the skill ratio in each single year namely  $SR_{2001}$ ,  $SR_{2002}$  and  $SR_{2003}$  with respect to the average skill ratio of the period before the treatment (1995-97). In this case, it is easy to see that the skill bias effect tends to increase over time, it reaches a maximum in year 2002 and tends to decline, or to become not significantly different from zero, when going through year 2003.

Tables from 4 to 7, instead, show the dynamics of each single component of the skill ratio: top managers, middle managers, clerks and blue collars. What emerges from the estimates is that the general skill bias effect previously described seems to be primarily driven by the fall in the relative employment of production workers, i.e. blue collars. In other words, the skill-bias is due to a decrease in the denominator rather than to an increase of the numerator. In fact, we do not find any statistically significant effect of offshoring on the employment of skilled personnel, even if the sign of the coefficient is positive and the magnitude of the effect is in line with the trend of the general skill ratio.

Table 3: The skill composition effect of production offshoring: nonproduction/production workers

<b>Variable</b>	<b>Coefficient</b>	<b>Bootstrapped s.e.</b>
$SR_{2001-03} - SR_{1995-97}$	0.139*	0.075
$SR_{2001} - SR_{1995-97}$	0.134*	0.082
$SR_{2002} - SR_{1995-97}$	0.145*	0.086
$SR_{2003} - SR_{1995-97}$	0.138*	0.099

\* significant at 10%. All standard errors are bootstrapped (100 repetitions).

Table 4: The skill composition effect of production offshoring: blue-collars

<b>Variable</b>	<b>Coefficient</b>	<b>Bootstrapped s.e.</b>
$\%BC_{2001-03} - \%BC_{1995-97}$	-0.062*	0.033
$\%BC_{2001} - \%BC_{1995-97}$	-0.064*	0.033
$\%BC_{2002} - \%BC_{1995-97}$	-0.064*	0.033
$\%BC_{2003} - \%BC_{1995-97}$	-0.059	0.038

\* significant at 10%. All standard errors are bootstrapped (100 repetitions).

Table 5: The skill composition effect of production offshoring: top managers

<b>Variable</b>	<b>Coefficient</b>	<b>Bootstrapped s.e.</b>
$\%TM_{2001-03} - \%TM_{1995-97}$	0.005	0.004
$\%TM_{2001} - \%TM_{1995-97}$	0.006	0.004
$\%TM_{2002} - \%TM_{1995-97}$	0.004	0.004
$\%TM_{2003} - \%TM_{1995-97}$	0.004	0.003

\* significant at 10%. All standard errors are bootstrapped (100 repetitions).

Table 6: The skill composition effect of production offshoring: middle managers

<b>Variable</b>	<b>Coefficient</b>	<b>Bootstrapped s.e.</b>
$\%MM_{2001-03} - \%MM_{1995-97}$	0.015	0.028
$\%MM_{2001} - \%MM_{1995-97}$	0.013	0.018
$\%MM_{2002} - \%MM_{1995-97}$	0.012	0.017
$\%MM_{2003} - \%MM_{1995-97}$	0.020	0.028

\* significant at 10%. All standard errors are bootstrapped (100 repetitions).

Table 7: The skill composition effect of production offshoring: clerks

<b>Variable</b>	<b>Coefficient</b>	<b>Bootstrapped s.e.</b>
$\%CL_{2001-03} - \%CL_{1995-97}$	0.003	0.030
$\%CL_{2001} - \%CL_{1995-97}$	0.003	0.035
$\%CL_{2002} - \%CL_{1995-97}$	0.008	0.033
$\%CL_{2003} - \%CL_{1995-97}$	-0.003	0.032

\* significant at 10%. All standard errors are bootstrapped (100 repetitions).



## 4 Conclusions

In this paper we investigate the effect of the choice to offshore production activities toward cheap labor countries on the skill composition of Italian manufacturing firms over the period 1995-2003. We compare the employment of skilled relative to unskilled workers within a sample of firms that, in the period 1998-2000, farmed out part of their production activities across the national borders to the one of a counterfactual sample of firms that, although having similar characteristics, did not choose to move production abroad.

In order to control for possible selection effects and for the presence of unobserved factors that possibly affect the firm's decision to offshore, we employ a difference-in-differences estimation together with propensity score matching. This allows us to compare the outcomes in the post-treatment period with the average outcome in the pre-treatment period.

Our results point to a positive, even if not strongly significant, skill-bias effect of production offshoring. More precisely, we observe that offshoring firms tend to employ a higher relative share of non-production workers with respect to their counterfactuals. However, when we look at the dynamics of each single components of the skill ratio, we find that this general skill-bias is mainly determined by a fall in the relative employment of blue collars.

Our results, thus, seem to support those contributions that do not find a strong skill upgrading effect of globalization on Italian manufacturing firms (Piva and Vivarelli, 2004). In addition, we also support the idea that, in the short run, the vertical fragmentation of production, i.e. the seek to exploit factors cost differentials between countries, contributes to worsen the employment conditions of manual workers (Sachs and Shatz, 1994; Anderton and Brenton, 1999; Strauss-Khan, 2003; Hijzen, Görg, and Hine, 2004).

Put it another way, the offshoring decision seems to be driven by a cost reduction strategy that aims at substituting away "home" production workers with "abroad" and relatively cheaper labour force: the relatively short period of time considered after the treatment, in fact, does not allow to control for the skill upgrading effect that can possibly emerge once the firm reaches sufficient economies of scale in the production of high value-added goods. However, the nature of the data and the limited number of treated units claim for further research on the field.

## References

- AGARWAL, J. (1997): “Effect of foreign direct investment on employment in home countries,” *Transnational Corporation*, 2, 1–28.
- AMITI, M., AND S.-J. WEI (2005): “Fear of outsourcing: is it justified?,” *Economic Policy*, April, 307–347.
- ANDERTON, B., AND P. BRENTON (1999): “Outsourcing and low-skilled workers in the UK,” *Bulletin of Economic Research*, 51(4), 267–286.
- ANGRIST, J., G. IMBENS, AND D. RUBIN (1996): “Identification of causal effects using instrumental variables,” *Journal of Econometrics*, 71(1-2), 145–160.
- BARBA-NAVARETTI, G., AND D. CASTELLANI (2004): “Does investing abroad affect performance at home? Comparing Italian multinational and national enterprises,” Discussion Paper 4284, CEPR, London.
- BECKER, S. O., AND A. ICHINO (2002): “Estimation of average treatment effects based on propensity score,” *The Stata Journal*, 2(4), 358–377.
- BERMAN, E., J. BOUND, AND Z. GRILICHES (1994): “Changes in the demand for skilled labour within US manufacturing: evidence from the Annual Survey of Manufacturers,” *The Quarterly Journal of Economics*, 109, 367–397.
- BLÖMSTROM, M., G. FORS, AND R. E. LIPSEY (1997): “Foreign direct investment and employment: home country experience in the United States and Sweden,” *The Economic Journal*, 445, 1787–1797.
- BRACONIER, H., AND K. EKHOLM (2000): “Swedish multinationals and competition from high and low-wage location,” *Review of International Economics*, 3, 371–392.
- BRAINARD, L., AND R. LITAN (2004): “Offshoring service jobs: bane or boom or what to do?,” *The Brookings Institutions Policy Briefs*, 132.
- BRATTI, M., AND N. MATTEUCCI (2005): “Is there a skill-biased technological change in Italian manufacturing? Evidence from firm-level data,” *Brussels Economic Review*, 48(1).

- CALIENDO, M., R. HUJER, AND S. THOMSEN (2005): “The employment effects of job creation schemes in Germany: a microeconomic evaluation,” Discussion Paper 1512, IZA.
- CALIENDO, M., AND S. KOPEINIG (2005): “Some practical guidance for the implementation of propensity score matching,” Discussion Paper 1588, IZA.
- CAPITALIA (2001): “IX Indagine sulle imprese manifatturiere, 1998-2000,” Discussion paper, Areas Studi Capitalia, Rome.
- CASTELLANI, D., I. MARIOTTI, AND L. PISCITELLO (2006): “Attività estere delle imprese multinazionali italiane e skill upgrading,” in *Multinazionali, innovazione e strategie per la competitività*, ed. by S. Mariotti, and L. Piscitello, pp. 165–183. Il Mulino.
- CHRISTENSEN, L., D. W. JORGENSEN, AND L. LAU (1973): “Transcendental logarithmic production frontier,” *Review of Economics and Statistics*, 55(1), 28–45.
- DELL’MOUR, R., P. EGGER, K. GUGLER, AND M. PFAFFERMEYR (2000): “Outsourcing of Austrian manufacturing to Eastern Europe countries: effects on productivity and the labour market,” in *Fragmentation and the value added chain*, ed. by S. Arndt, H. Handler, and D. Salvatore. Vienna Conference.
- FALK, M., AND B. KOEBEL (2000): “Outsourcing of services, imported materials and the demand for heterogeneous labour: an application of a generalised Box-Cox function,” Discussion Paper 51, ZEW.
- FEENSTRA, R. C., AND G. H. HANSON (1996): “Globalization, outsourcing, and wage inequality,” Working Paper 5424, NBER, Cambridge, MA.
- FITZENBERGER, B. (1999): *Wages and employment across skill groups: an analysis for West Germany*, vol. 6 of *ZEW Economic Studies*. Physica, Heidelberg.
- FORTIS, M. (2005): “Il Made in Italy manifatturiero e la sfida globale,” *Economia e Politica Industriale*, 1.
- HANSSON, P. (2004): “Skill upgrading and production transfer within Swedish multinationals in the 1990s,” Working Documents 163, CEPS.

- HEAD, K., AND J. RIES (2002): “Offshore production and skill upgrading by Japanese manufacturing firms,” *Journal of International Economics*, 58(1), 81–105.
- HECKMAN, J. J. (1990): “Varieties of selection bias,” *American Economic Review*, 80(2), 313–318.
- (1997): “Instrumental variables: a study of implicit behavioural assumptions used in making program evaluations,” *Journal of Human Resources*, 32(3), 441–462.
- HECKMAN, J. J., H. ICHIMURA, AND P. E. TODD (1997): “Matching as an econometric evaluation estimation: evidence from evaluating a job training programme,” *The Review of Economic Studies*, 64(4 Special Issue), 605–654.
- HECKMAN, J. J., R. LALONDE, AND J. SMITH (1999): “The economics and econometrics of active labor market programs,” in *Handbook of labor economics*, ed. by O. Ashenfelter, and D. Card, vol. 3, pp. 1865–2086. North Holland.
- HELG, R., AND L. TAJOLI (2005): “Patterns of international fragmentation of production and implications for the labor markets,” *North American Journal of Economics and Finance*, 16(2), 233–254.
- HIJZEN, A., H. GÖRG, AND R. C. HINE (2004): “International outsourcing and the skill structure of labor demand in the United Kingdom,” *The Economic Journal*, 115, 860–878.
- JONES, R., AND H. KIERZKOWSKI (2001): “A framework for fragmentation,” in *Fragmentation and international trade*, ed. by S. Arndt, and H. Kierzkowski. Oxford University Press, Oxford.
- LIPSEY, R. E. (2002): “Home and host country effects of FDI,” Working Paper 9293, NBER, Cambridge (MA).
- MANN, C. (2004): “Globalization of IT services and white collar jobs: the next wave of productivity growth,” *International Economics Policy Beliefs*, 3-11, Institute of International Economics.

- MARIOTTI, S., M. MUTINELLI, AND L. PISCITELLO (2003): “Home country employment and foreign direct investment: evidence from the Italian case,” *Cambridge Journal of Economics*, 3, 419–431.
- MARKUSEN, J. R., D. KONAN, A. VENABLES, AND K. ZHANG (1996): “A unified treatment of horizontal direct investment, vertical direct investment and the pattern of trade in goods and services,” Working Paper 5969, NBER, Cambridge (MA).
- PAVITT, K. (1984): “Sectoral patterns of technical change: towards a taxonomy and a theory,” *Research Policy*, 13, 343–373.
- PIVA, M., AND M. VIVARELLI (2004): “The determinants of the skill bias in Italy: R&D, organization or globalization?,” *Economics of Innovation and New Technology*, 13(4), 329–347.
- ROSENBAUM, P. R., AND D. B. RUBIN (1983): “The central role of propensity score in observational studies for causal effects,” *Biometrika*, 70(1), 41–44.
- SACHS, J. D., AND H. J. SHATZ (1994): “Trade and jobs in US manufacturing,” *Brookings Papers on Economic Activity*, 1994(1), 1–84.
- SIANESI, B. (2004): “An evaluation of the Swedish system of active labor market programmes in the 1990s,” *Review of Economics and Statistics*, 86(1), 133–155.
- SLAUGHTER, M. J. (2000): “Production transfer within multinational enterprises and American wages,” *Journal of International Economics*, 50, 449–472.
- SMITH, J. A., AND P. E. TODD (2005): “Does matching overcome LaLonde’s critique nonexperimental estimators?,” *Journal of Econometrics*, 125, 305–353.
- STRAUSS-KHAN, V. (2003): “The role of globalization in the within-industry shift away from unskilled workers in France,” Working Paper 9716, NBER.
- WOOD, A. (1994): *North-South trade, employment, and inequality: changing fortunes in a skill-driven world*. Clarendon Press, Oxford.

WOOLDRIDGE, J. (2001): “Asymptotic properties of weighted M-estimators for standard stratified samples,” *Econometric Theory*, 17(2), 451–470.

## Appendix: definition of variables and summary statistics

Variable	Type and Definition
<i>Geographical location</i>	<i>Dummy</i>
North	Liguria, Lombardia, Piemonte, Valle d'Aosta, Emilia-Romagna, Veneto, Friuli Venezia-Giulia, Trentino Alto Adige, Marche, Abruzzo, Umbria, Toscana, Lazio, Molise
South	Basilicata, Calabria, Campania, Puglia, Sardegna, Sicilia
<i>Employment size</i>	<i>Dummy</i>
Small	10-49 employees
Medium	50-250 employees
Large	>250 employees
<i>Sector of economic activity (Pavitt)</i>	<i>Dummy</i>
Supplier dominated	Textiles, footwear, food and beverage, paper and printing, wood
Specialized supplier	Machinery and equipment, office accounting and computer machinery, medical optical and precision instruments
<i>Business Groups</i>	<i>Dummy</i>
Group	1 if the firm belongs to a business group, 0 otherwise
<i>Technology</i>	<i>Dummy</i>
ICT	1 if the firm has invested in informatics and ICT in the period 1995-97, 0 otherwise
<i>Export activity</i>	<i>Dummy</i>
EXP	1 if the firm has exported goods in 1995-97, 0 otherwise
<i>Firm's age</i>	<i>Continuous</i>
AGE	Age at year 1997
<i>Capital intensity</i>	<i>Continuous</i>
$K/Y_{1995-97}$	Net capital stock over sales 1995-97
<i>Productivity</i>	<i>Continuous</i>
$Y/L_{1995-97}$	Average sales over average employment 1995-97
<i>Unit labor costs</i>	<i>Continuous</i>
$ULC_{1995-97}$	Average labor cost over average employment 1995-97
<i>Financial performance</i>	<i>Continuous</i>
$ROI_{1995-97}$	Return on investments
<i>Average skill ratio 1995-97</i>	<i>Continuous</i>
$SR_{1995-97}$	Non-production workers: entrepreneurs, top managers, middle managers, clerks

<b>Non-offshoring firms*</b>	<b>Obs</b>	<b>Mean</b>	<b>Std.Dev</b>	<b>Min.</b>	<b>Max.</b>
North	177	.7627119	.4266272	0	1
South	177	.2372881	.4266272	0	1
Small	177	.6610169	.4747069	0	1
Medium	177	.2881356	.4541794	0	1
Large	177	.0508475	.2203093	0	1
SupplDom	177	.6723164	.4707003	0	1
SpecSupp	177	.3276836	.4707003	0	1
Group	177	.1468927	.3550031	0	1
ICT	177	.6949153	.4617495	0	1
EXP	177	.7062147	.456787	0	1
AGE	177	33.14124	16.56281	7	96
$K/Y_{95-97}$	177	62.19342	78.68751	.6933796	339.0949
$Y/L_{95-97}$	177	303.6329	355.6194	34.34141	1628.083
$ULC_{95-97}$	177	48.01859	59.10143	6.509797	275.3257
$ROI_{95-97}$	177	23.89585	35.01768	-72.33707	322.285
$SR_{95-97}$	177	.4732996	.4240047	.0153846	2.563889
$WC/L_{95-97}$	177	.2830085	.140808	.0151515	.7190977
$BC/L_{95-97}$	177	.7169915	.140808	.2809023	.9848485
<b>Offshoring firms*</b>	<b>Obs</b>	<b>Mean</b>	<b>Std.Dev</b>	<b>Min.</b>	<b>Max.</b>
North	7	.7142857	.48795	0	1
South	7	.2857143	.48795	0	1
Small	7	.5714286	.5345225	0	1
Medium	7	.1428571	.3779645	0	1
Large	7	.2857143	.48795	0	1
SupplDom	7	.5714286	.5345225	0	1
SpecSupp	7	.4285714	.5345225	0	1
Group	7	.1428571	.3779645	0	1
ICT	7	.8571429	.3779645	0	1
EXP	7	.8571429	.3779645	0	1
AGE	7	27.14286	9.352871	16	40
$K/Y_{95-97}$	7	91.67216	102.9942	15.06065	270.996
$Y/L_{95-97}$	7	443.961	486.119	90.06921	1301.123
$ULC_{95-97}$	7	76.67837	78.98095	21.12281	220.0333
$ROI_{95-97}$	7	32.72583	40.29681	-2.627105	109.2727
$SR_{95-97}$	7	.3023826	.2620984	.0759734	.875
$WC/L_{95-97}$	7	.2110251	.1233832	.0706076	.4666667
$BC/L_{95-97}$	7	.7889749	.1233832	.5333334	.9293925

\*Simple t-tests did not reject the hypothesis of the equality of means between treated and control units. The results of the t-test are not reported here but they are available on request.



**Testing the balancing property\***

<b>Inferior of block of ps</b>	<b>Non offshoring firms</b>	<b>Offshoring firms</b>	<b>Total</b>
0.0062927	123	4	127
0.2	1	2	3
0.4	1	0	1
0.6	0	1	1
<b>Total</b>	125	7	132

\*The balancing property is satisfied according to the algorithm developed by Becker and Ichino (2002).

**Definition of production offshoring from the Questionnaire**

Has the firm delocalized its production activities to Centre-East Europe countries [...] in the period 1998-2000?

i Yes

ii No

## NOTE DI LAVORO DELLA FONDAZIONE ENI ENRICO MATTEI

### Fondazione Eni Enrico Mattei Working Paper Series

Our Note di Lavoro are available on the Internet at the following addresses:

<http://www.feem.it/Feem/Pub/Publications/WPapers/default.htm>

<http://www.ssrn.com/link/feem.html>

<http://www.repec.org>

<http://agecon.lib.umn.edu>

<http://www.bepress.com/feem/>

### NOTE DI LAVORO PUBLISHED IN 2007

NRM	1.2007	<i>Rinaldo Brau, Alessandro Lanza, and Francesco Pigliaru: <u>How Fast are Small Tourism Countries Growing? The 1980-2003 Evidence</u></i>
PRCG	2.2007	<i>C.V. Fiorio, M. Florio, S. Salini and P. Ferrari: <u>Consumers' Attitudes on Services of General Interest in the EU: Accessibility, Price and Quality 2000-2004</u></i>
PRCG	3.2007	<i>Cesare Dosi and Michele Moretto: <u>Concession Bidding Rules and Investment Time Flexibility</u></i>
IEM	4.2007	<i>Chiara Longo, Matteo Manera, Anil Markandya and Elisa Scarpa: <u>Evaluating the Empirical Performance of Alternative Econometric Models for Oil Price Forecasting</u></i>
PRCG	5.2007	<i>Bernardo Bortolotti, William Megginson and Scott B. Smart: <u>The Rise of Accelerated Seasoned Equity Underwritings</u></i>
CCMP	6.2007	<i>Valentina Bosetti and Massimo Tavoni: <u>Uncertain R&amp;D, Backstop Technology and GHGs Stabilization</u></i>
CCMP	7.2007	<i>Robert Küster, Ingo Ellersdorfer, Ulrich Fahl (lxxx): <u>A CGE-Analysis of Energy Policies Considering Labor Market Imperfections and Technology Specifications</u></i>
CCMP	8.2007	<i>Mònica Serrano (lxxx): <u>The Production and Consumption Accounting Principles as a Guideline for Designing Environmental Tax Policy</u></i>
CCMP	9.2007	<i>Erwin L. Corong (lxxx): <u>Economic and Poverty Impacts of a Voluntary Carbon Reduction for a Small Liberalized Developing Economy: The Case of the Philippines</u></i>
CCMP	10.2007	<i>Valentina Bosetti, Emanuele Massetti, and Massimo Tavoni: <u>The WITCH Model. Structure, Baseline, Solutions</u></i>
SIEV	11.2007	<i>Margherita Turvani, Aline Chiabai, Anna Alberini and Stefania Tonin: <u>Public Policies for Contaminated Site Cleanup: The Opinions of the Italian Public</u></i>
CCMP	12.2007	<i>M. Berritella, A. Certa, M. Enea and P. Zito: <u>An Analytic Hierarchy Process for The Evaluation of Transport Policies to Reduce Climate Change Impacts</u></i>
NRM	13.2007	<i>Francesco Bosello, Barbara Buchner, Jacopo Crimi, Carlo Giupponi and Andrea Povellato: <u>The Kyoto Protocol and the Effect of Existing and Planned Measures in the Agricultural and Forestry Sector in the EU25</u></i>
NRM	14.2007	<i>Francesco Bosello, Carlo Giupponi and Andrea Povellato: <u>A Review of Recent Studies on Cost Effectiveness of GHG Mitigation Measures in the European Agro-Forestry Sector</u></i>
CCMP	15.2007	<i>Massimo Tavoni, Brent Sohngen, and Valentina Bosetti: <u>Forestry and the Carbon Market Response to Stabilize Climate</u></i>
ETA	16.2007	<i>Erik Ansink and Arjan Ruijs: <u>Climate Change and the Stability of Water Allocation Agreements</u></i>
ETA	17.2007	<i>François Gusdorf and Stéphane Hallegatte: <u>Compact or Spread-Out Cities: Urban Planning, Taxation, and the Vulnerability to Transportation Shocks</u></i>
NRM	18.2007	<i>Giovanni Bella: <u>A Bug's Life: Competition Among Species Towards the Environment</u></i>
IEM	19.2007	<i>Valeria Termini and Laura Cavallo: <u>"Spot, Bilateral and Futures Trading in Electricity Markets. Implications for Stability"</u></i>
ETA	20.2007	<i>Stéphane Hallegatte and Michael Ghil: <u>Endogenous Business Cycles and the Economic Response to Exogenous Shocks</u></i>
CTN	21.2007	<i>Thierry Bréchet, François Gerard and Henry Tulkens: <u>Climate Coalitions: A Theoretical and Computational Appraisal</u></i>
CCMP	22.2007	<i>Claudia Kettner, Angela Köppl, Stefan P. Schleicher and Gregor Thenius: <u>Stringency and Distribution in the EU Emissions Trading Scheme –The 2005 Evidence</u></i>
NRM	23.2007	<i>Hongyu Ding, Arjan Ruijs and Ekko C. van Ierland: <u>Designing a Decision Support System for Marine Reserves Management: An Economic Analysis for the Dutch North Sea</u></i>
CCMP	24.2007	<i>Massimiliano Mazzanti, Anna Montini and Roberto Zoboli: <u>Economic Dynamics, Emission Trends and the EKC Hypothesis New Evidence Using NAMEA and Provincial Panel Data for Italy</u></i>
ETA	25.2007	<i>Joan Canton: <u>Redealing the Cards: How the Presence of an Eco-Industry Modifies the Political Economy of Environmental Policies</u></i>
ETA	26.2007	<i>Joan Canton: <u>Environmental Taxation and International Eco-Industries</u></i>
CCMP	27.2007	<i>Oscar Cacho and Leslie Lipper (lxxxii): <u>Abatement and Transaction Costs of Carbon-Sink Projects Involving Smallholders</u></i>
CCMP	28.2007	<i>A. Caparrós, E. Cerdá, P. Ovando and P. Campos (lxxxii): <u>Carbon Sequestration with Reforestations and Biodiversity-Scenic Values</u></i>
CCMP	29.2007	<i>Georg E. Kindermann, Michael Obersteiner, Ewald Rametsteiner and Ian McCallum (lxxxii): <u>Predicting the Deforestation-Trend Under Different Carbon-Prices</u></i>

CCMP	30.2007	<i>Raul Ponce-Hernandez (lxxxii): <u>A Modelling Framework for Addressing the Synergies between Global Conventions through Land Use Changes: Carbon Sequestration, Biodiversity Conservation, Prevention of Land Degradation and Food Security in Agricultural and Forested Lands in Developing Countries</u></i>
ETA	31.2007	<i>Michele Moretto and Gianpaolo Rossini: <u>Are Workers' Enterprises Entry Policies Conventional</u></i>
KTHC	32.2007	<i>Giacomo Degli Antoni: <u>Do Social Relations Affect Economic Welfare? A Microeconomic Empirical Analysis</u></i>
CCMP	33.2007	<i>Reyer Gerlagh and Onno Kuik: <u>Carbon Leakage with International Technology Spillovers</u></i>
CCMP	34.2007	<i>Richard S.J. Tol: <u>The Impact of a Carbon Tax on International Tourism</u></i>
CCMP	35.2007	<i>Reyer Gerlagh, Snorre Kverndokk and Knut Einar Rosendahl: <u>Optimal Timing of Environmental Policy: Interaction Between Environmental Taxes and Innovation Externalities</u></i>
SIEV	36.2007	<i>Anna Alberini and Alberto Longo: <u>Valuing the Cultural Monuments of Armenia: Bayesian Updating of Prior Beliefs in Contingent Valuation</u></i>
CCMP	37.2007	<i>Roeland Bracke, Tom Verbeke and Veerle Dejonckheere: <u>What Distinguishes EMAS Participants? An Exploration of Company Characteristics</u></i>
CCMP	38.2007	<i>E. Tzouvelekas, D. Vouvaki and A. Xepapadeas: <u>Total Factor Productivity Growth and the Environment: A Case for Green Growth Accounting</u></i>
CCMP	39.2007	<i>Klaus Keller, Louise I. Miltich, Alexander Robinson and Richard S.J. Tol: <u>How Overconfident are Current Projections of Anthropogenic Carbon Dioxide Emissions?</u></i>
CCMP	40.2007	<i>Massimiliano Mazzanti and Roberto Zoboli: <u>Environmental Efficiency, Emission Trends and Labour Productivity: Trade-Off or Joint Dynamics? Empirical Evidence Using NAMEA Panel Data</u></i>
PRCG	41.2007	<i>Veronica Ronchi: <u>Populism and Neopopulism in Latin America: Clientelism, Trade Union Organisation and Electoral Support in Mexico and Argentina in the '90s</u></i>
PRCG	42.2007	<i>Veronica Ronchi: <u>The Neoliberal Myth in Latin America: The Cases of Mexico and Argentina in the '90s</u></i>
CCMP	43.2007	<i>David Anthoff, Cameron Hepburn and Richard S.J. Tol: <u>Equity Weighting and the Marginal Damage Costs of Climate Change</u></i>
ETA	44.2007	<i>Bouwé R. Dijkstra and Dirk T.G. Rübhelke: <u>Group Rewards and Individual Sanctions in Environmental Policy</u></i>
KTHC	45.2007	<i>Benno Torgler: <u>Trust in International Organizations: An Empirical Investigation Focusing on the United Nations</u></i>
CCMP	46.2007	<i>Enrica De Cian, Elisa Lanzi and Roberto Roson: <u>The Impact of Temperature Change on Energy Demand: A Dynamic Panel Analysis</u></i>
CCMP	47.2007	<i>Edwin van der Werf: <u>Production Functions for Climate Policy Modeling: An Empirical Analysis</u></i>
KTHC	48.2007	<i>Francesco Lancia and Giovanni Prarolo: <u>A Politico-Economic Model of Aging, Technology Adoption and Growth</u></i>
NRM	49.2007	<i>Giulia Minoia: <u>Gender Issue and Water Management in the Mediterranean Basin, Middle East and North Africa</u></i>
KTHC	50.2007	<i>Susanna Mancinelli and Massimiliano Mazzanti: <u>SME Performance, Innovation and Networking Evidence on Complementarities for a Local Economic System</u></i>
CCMP	51.2007	<i>Kelly C. de Bruin, Rob B. Dellink and Richard S.J. Tol: <u>AD-DICE: An Implementation of Adaptation in the DICE Model</u></i>
NRM	52.2007	<i>Frank van Kouwen, Carel Dieperink, Paul P. Schot and Martin J. Wassen: <u>Interactive Problem Structuring with ICZM Stakeholders</u></i>
CCMP	53.2007	<i>Valeria Costantini and Francesco Crespi: <u>Environmental Regulation and the Export Dynamics of Energy Technologies</u></i>
CCMP	54.2007	<i>Barbara Buchner, Michela Catenacci and Alessandra Sgobbi: <u>Governance and Environmental Policy Integration in Europe: What Can We learn from the EU Emission Trading Scheme?</u></i>
CCMP	55.2007	<i>David Anthoff and Richard S.J. Tol: <u>On International Equity Weights and National Decision Making on Climate Change</u></i>
CCMP	56.2007	<i>Edwin van der Werf and Sonja Peterson: <u>Modeling Linkages Between Climate Policy and Land Use: An Overview</u></i>
CCMP	57.2007	<i>Fabien Priour: <u>The Environmental Kuznets Curve in a World of Irreversibility</u></i>
KTHC	58.2007	<i>Roberto Antonietti and Giulio Cainelli: <u>Production Outsourcing, Organizational Governance and Firm's Technological Performance: Evidence from Italy</u></i>
SIEV	59.2007	<i>Marco Percolo: <u>Urban Transport Policies and the Environment: Evidence from Italy</u></i>
ETA	60.2007	<i>Henk Folmer and Pierre von Mouche: <u>Linking of Repeated Games. When Does It Lead to More Cooperation and Pareto Improvements?</u></i>
CCMP	61.2007	<i>Arthur Riedacker (lxxx): <u>A Global Land Use and Biomass Approach to Reduce Greenhouse Gas Emissions, Fossil Fuel Use and to Preserve Biodiversity</u></i>
CCMP	62.2007	<i>Jordi Roca and Mònica Serrano: <u>Atmospheric Pollution and Consumption Patterns in Spain: An Input-Output Approach</u></i>
CCMP	63.2007	<i>Derek W. Bunn and Carlo Fezzi (lxxx): <u>Interaction of European Carbon Trading and Energy Prices</u></i>
CTN	64.2007	<i>Benjamin Golub and Matthew O. Jackson (lxxxiii): <u>Naïve Learning in Social Networks: Convergence, Influence and Wisdom of Crowds</u></i>
CTN	65.2007	<i>Jacob K. Goeree, Arno Riedl and Aljaž Ule (lxxxiii): <u>In Search of Stars: Network Formation among Heterogeneous Agents</u></i>
CTN	66.2007	<i>Gönül Doğan, M.A.L.M. van Assen, Arnout van de Rijt, and Vincent Buskens (lxxxiii): <u>The Stability of Exchange Networks</u></i>
CTN	67.2007	<i>Ben Zissimos (lxxxiii): <u>Why are Trade Agreements Regional?</u></i>
CTN	68.2007	<i>Jacques Drèze, Michel Le Breton, Alexei Savvateev and Shlomo Weber (lxxxiii): <u>«Almost» Subsidy-free Spatial Pricing in a Multi-dimensional Setting</u></i>
CTN	69.2007	<i>Ana Babus (lxxxiii): <u>The Formation of Financial Networks</u></i>

CTN	70.2007	<i>Andrea Galeotti and Sanjeev Goyal</i> (lxxxiii): <u><a href="#">A Theory of Strategic Diffusion</a></u>
IEM	71.2007	<i>Francesco Bosello, Enrica De Cian and Roberto Roson</i> : <u><a href="#">Climate Change, Energy Demand and Market Power in a General Equilibrium Model of the World Economy</a></u>
ETA	72.2007	<i>Gastón Giordana and Marc Willinger</i> : <u><a href="#">Fixed Instruments to Cope with Stock Externalities An Experimental Evaluation</a></u>
KTHC	73.2007	<i>Oguzhan Dincer and Eric Uslaner</i> : <u><a href="#">Trust and Growth</a></u>
CCMP	74.2007	<i>Fei Teng and Alun Gu</i> : <u><a href="#">Climate Change: National and Local Policy Opportunities in China</a></u>
KTHC	75.2007	<i>Massimiano Bucchi and Valeria Papponetti</i> : <u><a href="#">Research Evaluation as a Policy Design Tool: Mapping Approaches across a Set of Case Studies</a></u>
SIEV	76.2007	<i>Paolo Figini, Massimiliano Castellani and Laura Vici</i> : <u><a href="#">Estimating Tourist Externalities on Residents: A Choice Modeling Approach to the Case of Rimini</a></u>
IEM	77.2007	<i>Irene Valsecchi</i> : <u><a href="#">Experts and Non-experts</a></u>
CCMP	78.2007	<i>Giuseppe Di Vita</i> : <u><a href="#">Legal Families and Environmental Protection: is there a Causal Relationship?</a></u>
KTHC	79.2007	<i>Roberto Antonietti and Giulio Cainelli</i> : <u><a href="#">Spatial Agglomeration, Technology and Outsourcing of Knowledge Intensive Business Services Empirical Insights from Italy</a></u>
KTHC	80.2007	<i>Iacopo Grassi</i> : <u><a href="#">The Music Market in the Age of Download</a></u>
ETA	81.2007	<i>Carlo Carraro and Alessandra Sgobbi</i> : <u><a href="#">Modelling Negotiated Decision Making: a Multilateral, Multiple Issues, Non-Cooperative Bargaining Model with Uncertainty</a></u>
CCMP	82.2007	<i>Valentina Bosetti, Carlo Carraro, Emanuele Massetti and Massimo Tavoni</i> : <u><a href="#">International Energy R&amp;D Spillovers and the Economics of Greenhouse Gas Atmospheric Stabilization</a></u>
CCMP	83.2007	<i>Sjak Smulders and Edwin van der Werf</i> : <u><a href="#">Climate Policy and the Optimal Extraction of High- and Low-Carbon Fossil Fuels</a></u>
SIEV	84.2007	<i>Benno Torgler, Bruno S. Frey and Clevo Wilson</i> : <u><a href="#">Environmental and Pro-Social Norms: Evidence from 30 Countries</a></u>
KTHC	85.2007	<i>Elena Bellini, Ugo Gasparino, Barbara Del Corpo and William Malizia</i> : <u><a href="#">Impact of Cultural Tourism upon Urban Economies: An Econometric Exercise</a></u>
NRM	86.2007	<i>David Tomberlin and Garth Holloway</i> : <u><a href="#">Trip-Level Analysis of Efficiency Changes in Oregon's Deepwater Trawl Fishery</a></u>
CTN	87.2007	<i>Pablo Revilla</i> : <u><a href="#">Many-to-One Matching when Colleagues Matter</a></u>
IEM	88.2007	<i>Hipòlit Torrò</i> : <u><a href="#">Forecasting Weekly Electricity Prices at Nord Pool</a></u>
ETA	89.2007	<i>Y. Hossein Farzin</i> : <u><a href="#">Sustainability and Optimality in Economic Development: Theoretical Insights and Policy Prospects</a></u>
NRM	90.2007	<i>P. Sarfo-Mensah and W. Oduro</i> : <u><a href="#">Traditional Natural Resources Management Practices and Biodiversity Conservation in Ghana: A Review of Local Concepts and Issues on Change and Sustainability</a></u>
NRM	91.2007	<i>Lorenzo Pellegrini</i> : <u><a href="#">The Rule of The Jungle in Pakistan: A Case Study on Corruption and Forest Management in Swat</a></u>
NRM	92.2007	<i>Arjan Ruijs</i> : <u><a href="#">Welfare and Distribution Effects of Water Pricing Policies</a></u>
ETA	93.2007	<i>Jean-Marie Grether, Nicole A. Mathys and Jaime de Melo</i> : <u><a href="#">Trade, Technique and Composition Effects: What is Behind the Fall in World-Wide SO2 Emissions 1990-2000?</a></u>
PRCG	94.2007	<i>Bernardo Bortolotti, Carlo Cambini, Laura Rondi and Yossi Spiegel</i> : <u><a href="#">Capital Structure and Regulation: Does Ownership Matter?</a></u>
CCMP	95.2007	<i>Valentina Bosetti, Carlo Carraro, Emanuele Massetti and Massimo Tavoni</i> : <u><a href="#">Optimal Energy Investment and R&amp;D Strategies to Stabilise Greenhouse Gas Atmospheric Concentrations</a></u>
CCMP	96.2007	<i>Xavier Pautrel</i> : <u><a href="#">Pollution, Health and Life Expectancy: How Environmental Policy Can Promote Growth</a></u>
KTHC	97.2007	<i>Roberto Antonietti and Davide Antonioli</i> : <u><a href="#">Production Offshoring and the Skill Composition of Italian Manufacturing Firms: A Counterfactual Analysis</a></u>

(lxxxix) This paper was presented at the EAERE-FEEM-VIU Summer School on "Computable General Equilibrium Modeling in Environmental and Resource Economics", held in Venice from June 25th to July 1st, 2006 and supported by the Marie Curie Series of Conferences "European Summer School in Resource and Environmental Economics".

(lxxxix) This paper was presented at the Workshop on "Climate Mitigation Measures in the Agro-Forestry Sector and Biodiversity Futures", Trieste, 16-17 October 2006 and jointly organised by The Ecological and Environmental Economics - EEE Programme, The Abdus Salam International Centre for Theoretical Physics - ICTP, UNESCO Man and the Biosphere Programme - MAB, and The International Institute for Applied Systems Analysis - IIASA.

(lxxxix) This paper was presented at the 12th Coalition Theory Network Workshop organised by the Center for Operation Research and Econometrics (CORE) of the Université Catholique de Louvain, held in Louvain-la-Neuve, Belgium on 18-20 January 2007.

#### 2007 SERIES

<b>CCMP</b>	<i>Climate Change Modelling and Policy</i> (Editor: Marzio Galeotti )
<b>SIEV</b>	<i>Sustainability Indicators and Environmental Valuation</i> (Editor: Anil Markandya)
<b>NRM</b>	<i>Natural Resources Management</i> (Editor: Carlo Giupponi)
<b>KTHC</b>	<i>Knowledge, Technology, Human Capital</i> (Editor: Gianmarco Ottaviano)
<b>IEM</b>	<i>International Energy Markets</i> (Editor: Matteo Manera)
<b>CSRM</b>	<i>Corporate Social Responsibility and Sustainable Management</i> (Editor: Giulio Sapelli)
<b>PRCG</b>	<i>Privatisation Regulation Corporate Governance</i> (Editor: Bernardo Bortolotti)
<b>ETA</b>	<i>Economic Theory and Applications</i> (Editor: Carlo Carraro)
<b>CTN</b>	<i>Coalition Theory Network</i>