

Lopez-Garcia, Paloma

Working Paper

Labour Market Performance and Start-up Costs: OECD Evidence

CESifo Working Paper, No. 849

Provided in Cooperation with:

Ifo Institute – Leibniz Institute for Economic Research at the University of Munich

Suggested Citation: Lopez-Garcia, Paloma (2003) : Labour Market Performance and Start-up Costs: OECD Evidence, CESifo Working Paper, No. 849, Center for Economic Studies and ifo Institute (CESifo), Munich

This Version is available at:

<https://hdl.handle.net/10419/76344>

Standard-Nutzungsbedingungen:

Die Dokumente auf EconStor dürfen zu eigenen wissenschaftlichen Zwecken und zum Privatgebrauch gespeichert und kopiert werden.

Sie dürfen die Dokumente nicht für öffentliche oder kommerzielle Zwecke vervielfältigen, öffentlich ausstellen, öffentlich zugänglich machen, vertreiben oder anderweitig nutzen.

Sofern die Verfasser die Dokumente unter Open-Content-Lizenzen (insbesondere CC-Lizenzen) zur Verfügung gestellt haben sollten, gelten abweichend von diesen Nutzungsbedingungen die in der dort genannten Lizenz gewährten Nutzungsrechte.

Terms of use:

Documents in EconStor may be saved and copied for your personal and scholarly purposes.

You are not to copy documents for public or commercial purposes, to exhibit the documents publicly, to make them publicly available on the internet, or to distribute or otherwise use the documents in public.

If the documents have been made available under an Open Content Licence (especially Creative Commons Licences), you may exercise further usage rights as specified in the indicated licence.

LABOUR MARKET PERFORMANCE AND START-UP COSTS: OECD EVIDENCE

PALOMA LOPEZ-GARCIA

CESIFO WORKING PAPER NO. 849
CATEGORY 4: LABOUR MARKETS
JANUARY 2003

An electronic version of the paper may be downloaded

- *from the SSRN website:* www.SSRN.com
- *from the CESifo website:* www.CESifo.de

LABOUR MARKET PERFORMANCE AND START-UP COSTS: OECD EVIDENCE

Abstract

This paper is intended to make a contribution to the empirical literature explaining the rise of unemployment since the 1970s in western economies by means of interactions between shocks and institutions. The contribution is twofold. First, the impact of a general feature of developed economies that has been surprisingly neglected in the literature is analyzed, namely, the employment shift from industry and agriculture to services. The second contribution of the paper is the focus on the interaction of that shock with the administrative burdens on firm creation. The working hypotheses is that countries that impose high costs on the creation of new companies are not able to create enough jobs in the service sector to successfully absorb the workers released from the agriculture and industry sector. The result is higher unemployment.

JEL Classification: J63, J64, J65, E24, K2.

Keywords: macroeconomics of unemployment, panel data, start-up costs.

*Paloma Lopez-Garcia
Centre for Economic Performance
Houghton Street
WC2A 2AE London
United Kingdom
p.lopez-garcia@lse.ac.uk*

I would like to thank my supervisor Christopher Pissarides for his restless support and encouragement. I would also like to thank all the participants of the Center for Economic Studies Seminar for their valuable comments. Marc Mündler and Sascha Becker deserve special mention for their patience, and precious help, with econometric issues. This paper has been written with the financial support of the Bank of Spain.

1 Introduction

Robert Solow once said that one of the few good ways to test analytical ideas is to see whether they can make sense of international differences in institutional structure and historical development. This paper follows that advice, as do most of the large literature aimed at explaining the unusual and persistent increase in the unemployment rate from the 1970s in virtually all western capitalist economies.

In the 1970s the discussion was dominated by a shock story. Supply shocks of the 1970s and 1980s and the contractional macroeconomic policies to fight inflation were blamed for unemployment. But shocks across countries are not likely to vary enough to explain the observed differences in labour market performance. And the effect of shocks on unemployment is in any case temporary. Then how can one explain the persistence on the one hand and the different unemployment experiences across countries on the other?

The focus moved to labour market institutions, ignoring shocks all together sometimes. But the "usual suspects", the unemployment insurance system, the employment protection legislation or the union power were already in place when European unemployment was below the North-American one. There are three possible answers to that. First, labour market rigidities have become worse over time. It is true that some institutions, as the benefit insurance system or the tax wedge, have grown consistently in most OECD countries.¹ But others such as employment protection legislation or union density have decreased in the last decade (after an initial period of increase). The second way out could be that labour market rigidities impact on labour performance with a lag. The rise of unemployment in the early 70s could be then the result of rigidities introduced in the market ten years before.

The third answer, however, is lately the most popular: labour market rigidities were not so important in the past because there were no adverse shocks. Differences in labour market outcomes must be due to differences in the way that countries respond to similar shocks, which depends ultimately on the country specific institutions. It is the interaction of shocks with institutions what

¹By "increase" or "growth" of institutions it is meant a change that makes labour markets more "rigid" as could be an extension of the time unemployed receive benefits or an increase in the tax wedge. The opposite holds with "decrease".

can explain the persistence of the shocks and the different labour market performance evolution across economies, after being hit by similar shocks. The first economists in picking this idea up were Michael Bruno and Jeffrey Sacks in their 1985 book *The Economics of Worldwide Stagflation* where they focused on the interaction of the 1970s oil price shocks with the nature of collective bargaining.

This paper is intended to make a contribution to this line of research. The contribution is twofold. First, the impact of a general feature of developed economies that has been surprisingly neglected in the literature is analyzed, namely, the employment shift from industry and agriculture to services. The second contribution of the paper is the focus on the interaction of that shock with the administrative burdens on firm creation, start-up costs from now on.

The working hypotheses is that countries which impose high costs on the creation of new companies are not able to create enough jobs in the service sector to successfully absorb the workers released from the agriculture and industry sector. The result is higher unemployment.

The employment shift towards the service sector is a very well documented fact. Viktor Fuchs published in 1968 his path-breaking study *The Service Economy*. Around that time, Baumol published in the American Economic Review his paper "Unbalanced Growth," where the possible causes of the wide-spread shift of labour from industry and agriculture to the service sector were laid out.²

Baumol sorted economic activities into two groups: technologically progressive activities in which innovations, capital accumulation and economies of scale lead to increases in labour productivity (production sector); and constant productivity activities where labour is not a mean but the end so innovation can hardly increase productivity (service sector). The increase in labour productivity in the former sector brings in an increase in wages that is then spread to the overall economy. The constant productivity sector cannot compensate the rise in wages so production costs and prices increase. There are several effects at stake. First, the labour productivity growth is generating wealth that will be spent in services and non-services. Second, the relative increase in the service prices is inducing people to substitute away from services. As long as the substitution effect is not "too large" (the service demand is price-inelastic), the

²See also [2] where a third sector of "asymptotically stagnation", with a mix of progressive and stagnant inputs, was introduced. In [11] Baumol's unbalanced growth and Kaldor's balanced growth are reconcile.

overall demand for services will not decrease. To keep production in a sector with constant or decreasing productivity, labour has to be shifted from the high productivity sector.

Figure 1 shows the unweighted OECD average of manufacturing to service labour productivity and manufacturing to service price deflator. The pattern shown, which reproduces nicely Baumol predictions, is a feature of every country in the sample.

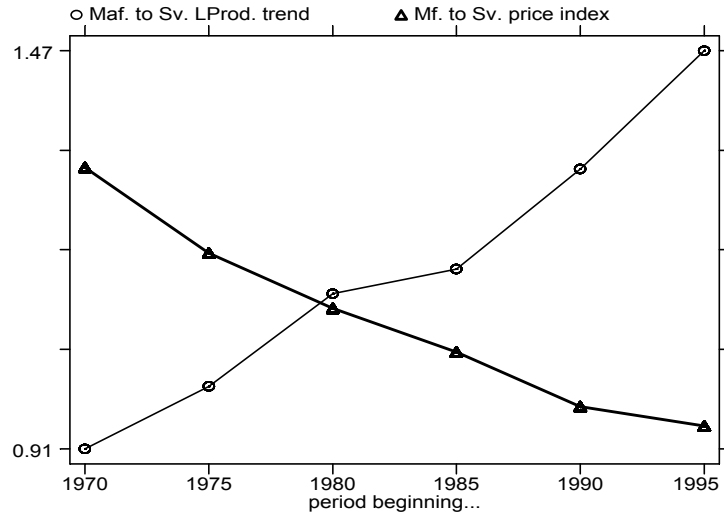


Figure 1: Manufacturing to service labour productivity and price index. Average OECD

Following Baumol we claim that the employment shift into services was the outcome of an exogenous shock: the slower productivity growth in services relative to non-service sectors. This approach is consistent with the arguments linking total factor productivity growth slowdown with unemployment but it emphasizes the differential productivity growth in services and the rest of the economy.³ Rather than on the overall fall in the supply or demand of jobs, the focus is on the shift of jobs and workers from non-service to service activities.

Figure 2 shows the annualized growth from 1970 to 1997 of total employment

³See [26] and more recently [7]. The argument is that the slowdown in total productivity growth has not been matched with a slowdown of wages and therefore unemployment has increased.

compared to the annualized growth of working age population in seven OECD countries and the EU average.

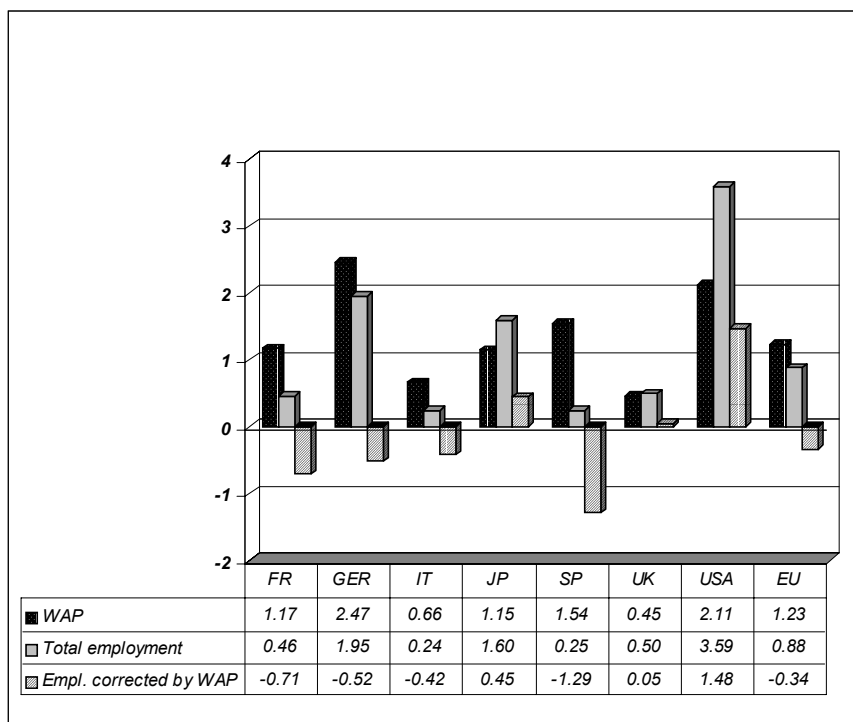


Figure 2: Employment and working age population annualized growth, in %. 1970-97

Only Japan, the UK and the USA were able to create enough jobs to compensate for the increase in working age population. Spain had an unfortunate combination of very poor employment growth and rather high increase in working age population. The question is, what is behind those differences in employment growth? Figure 3 shows the annualized contribution of each economic sector to total employment growth. The sector contributions are calculated as the annualized sector employment growth weighted by the sector's initial share of total employment.

Service employment growth accounts for most of total employment growth. The poor employment performance of Spain is the result of a very large release of workers from the agriculture, and to a lesser extent from the industry

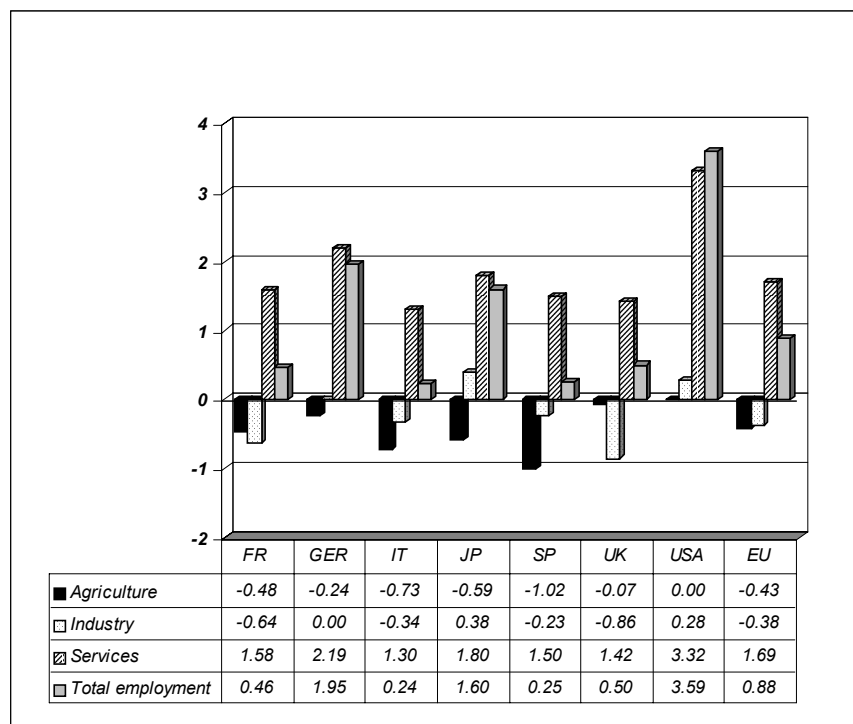


Figure 3: Annualized sector contribution to employment growth, in %. 1970-97

sector, along with a below average service job creation. The impressive performance of the USA is due to an incredible ability to create jobs in the service sector and of a very limited (none) loss of employment in the non-service sectors. Marimon and Zilibotti [1998] calculated that almost 80% of the long-run employment differential growth across countries and industries is accounted by sector effects (different initial distribution of labour across industries) and only 20% by country effects.

The inability of the major European economies to create enough jobs to absorb the increasing supply of labour has been well documented. Krueger and Pischke [1997], for example, decompose the growth of employment between population growth and other reasons and show that population growth in Europe does not create jobs at the same rate as it does in USA. They go further in the paper and claim that the reason for this is not, as usually believed, Europe's wage rigidity. That explanation would imply that unemployment would have to

increase most in Europe among groups whose wages have fallen most in USA. But that is not the case: the unemployment rate of the low-skilled group of workers (relative to the high-skilled one) is roughly the same in Europe and the United States. Krueger and Pischke rather suggest that the problem is the existence of restrictions on bringing new products to the market or on starting new businesses. When these restrictions are in place, the increase in labour supply is not traduced in an equivalent increase in the number of employers, and unemployment results.

This brings us to the second contribution of this paper, which is to relate the inability to create "enough" service jobs in some countries to their institutions governing firm creation and other product market regulations.

The 1994 McKinsey Global Institute report "Employment Performance" was perhaps the first study which claimed that product market regulations, as opposed to labour market regulations, were very important in explaining poor job creation in the service sector in Europe. Also in 1994, the OECD Jobs Study affirmed that "new jobs are likely to appear in the service sector, which already accounts for more than half of total employment in most OECD countries(..). New jobs must certainly be generated by the private sector, because in nearly all countries budget deficits and resistance to tax increases rule out significant expansion of the public sector (...). Efforts to improve the capacity of economies to create jobs should focus on *facilitating the development and use of technology; working time flexibility; encouragement of entrepreneurship and a general review of policies that may be hampering job creation.*"⁴

The OECD went further in this direction publishing in 1998 a monograph titled "Fostering Entrepreneurship." They also have very recently published comparable data on product market regulations (details are given in the next section) and consistent data on firm dynamics for 10 OECD countries. The paper by Scarpetta et al. [2002] is an extremely recent application of both data-sets. In that paper the authors test the role that policy and institutional settings in product and labour markets play for productivity and firm dynamics. They find that industry productivity performance is negatively affected by strict product market regulations. The second important finding is that more cumbersome regulation on entrepreneurial activity and costs of adjusting

⁴[21]. See the electronic version at <http://www1.oecd.org/sge/min/job94/tabcont.htm>

the workforce seem to negatively affect the entry of new small firms and their posterior expansion.

The current paper claims that countries which suffered the biggest rise in unemployment are the ones that failed to provide policies and institutions that were conducive to the employment in services. A key policy in this respect is the regulation of business openings. Service employment occurs on average in smaller and more decentralized establishments than manufacturing and successful new job creation in services requires the setting up of new companies.⁵ Countries where starting a business is cumbersome have failed to accommodate the employment shift from manufacturing and agriculture into services, at the cost of higher unemployment.

The paper follows very closely the methodology used by Blanchard and Wolfers in their highly acknowledge paper of 2000 (that paper will be referred as B&W from now on). In that paper the authors use a panel of 20 countries to explain the evolution of unemployment in the OECD from the 1960s via the interaction of shocks and institutions. The shocks included are the decrease in annual TFP growth, the increase in long-term interest rate, and the shift in labour demand. The institutions include the unemployment insurance system, the cost of hiring and firing, wage bargaining characteristics and active labour market policies.

Taking as a starting point the B&W model, we substitute the aggregate TFP growth by the differential productivity growth in manufacturing and services, and add one institution, namely, start-up costs. The purpose is to test whether start-up costs, when interacted with the shift of employment from non-services to services, can explain the poor service employment performance and high unemployment rate of some countries.

The next section describes with some detail the data used in the estimations. Section three explains the methodology and empirical results. Section four concludes.

⁵In 1995 the average service firm size in the European Union was of 5 employees, as compared to 16 employees in industry and energy. The data for United States is in 1997 of 21 and 56 employees respectively. As Scarpetta et al. confirm in their paper, American entrant firms are smaller than European ones but then expand much more.

2 Data description

A cross-country time-series data-set building on the one constructed and analyzed by B&W has been put together.⁶ We drew data from B&W for unemployment, labour market institutions and shocks. Time-varying institutions from Nickell and Nunziata [2002] (N&N for future reference) and Product Market Indicators from the OECD were added. The three macroeconomic shocks of B&W were complemented with a fourth shock intended to capture the sectorial shift from non-service to service activities over the last decades. A complete data-set is available for 20 OECD countries along 28 years, from 1970 to 1997.⁷ The countries included in the analysis are Australia, Austria, Belgium, Canada, Denmark, Finland, France, Germany, Ireland, Italy, Japan, the Netherlands, Norway, New Zealand, Portugal, Spain, Sweden, Switzerland, United Kingdom and United States.

A detailed description of the shocks and labour market institutions is given by B&W, Nickell [1997] and N&N. Rather than repeating the technical details given in the original sources of data, this section is intended to give a general overview of the data used in the analysis.

There are three dependent variables: unemployment rate, and service and manufacturing employment ratios. All data come from the OECD annual Labour Force Survey. Unemployment numbers are those gathered in the National Labour Force surveys. Service employment comprises civilian employment employed in sectors such as wholesale and retail trade; restaurants and hotels; transport, storage and communications; financing, insurance, real state and business services; and community, social and personal services. We have also carried out the regressions using industry civilian employment instead of manufacturing employment; the results are very robust.

Table 1, 2 and 3 show respectively the evolution from 1970 to 1997 of unemployment, service and manufacturing employment in the United States, Japan and five large European countries: France, Germany, Italy, Spain and UK. Each column shows the average over the period.

⁶Both the data-set and the original Stata program are available in Olivier Blanchard's or Justin Wolfers's web-page

⁷Blanchard and Wolfers [2000] work with a data-set that covers the period 1960-1997. However, the unavailability of data on sector employment, production and price indexes in earlier years made it advisable to reduce the observation period to 1970-1997.

| Countries | 1970-74 | 1995-97 | Change: 1970-97 |
|----------------------------------|---------|---------|-----------------|
| France | 2.71 | 11.54 | 7.37 |
| Germany | 1.06 | 9.85 | 8.79 |
| Italy | 4.27 | 12.04 | 7.77 |
| Spain | 2.97 | 22.96 | 19.99 |
| UK | 2.53 | 7.88 | 5.35 |
| USA | 5.41 | 5.50 | .09 |
| Japan | 1.30 | 3.24 | 1.94 |
| Source: OECD Annual Labour Force | | | |
| In % of labor force | | | |

Table 1: Unemployment rate

| Countries | 1970-74 | 1995-97 | Change: 1970-97 |
|----------------------------------|---------|---------|-----------------|
| France | 31.16 | 39.89 | 8.73 |
| Germany | 29.80 | 36.68 | 8.88 |
| Italy | 22.42 | 31.04 | 8.62 |
| Spain | 22.18 | 28.41 | 6.23 |
| UK | 37.57 | 48.75 | 11.19 |
| USA | 39.11 | 53.56 | 14.45 |
| Japan | 34.24 | 45.64 | 11.40 |
| Source: OECD Annual Labour Force | | | |
| In % of working age population | | | |

Table 2: Service employment

| Countries | 1970-74 | 1995-97 | Change: 1970-97 |
|----------------------------------|---------|---------|-----------------|
| France | 17.91 | - | - |
| Germany | 32.21 | 16.34 | -15.87 |
| Italy | 21.34 | 11.61 | -9.73 |
| Spain | 15.40 | 8.83 | -6.57 |
| UK | 23.16 | 13.10 | -10.07 |
| USA | 15.54 | 11.86 | -3.68 |
| Japan | 19.09 | 16.61 | -2.48 |
| Source: OECD Annual Labour Force | | | |
| In % of working age population | | | |

Table 3: Manufacturing employment

Table 1 shows that unemployment varies widely across countries and over time. Cross country differences seem to have increased over time. During the period of 1970-1974, the range went from 1% of unemployment in Germany to more than 5% in the United States. In the last period of reference differences were much larger. Unemployment was low in the range of 4 to 5% of the labour force in USA and Japan and alarmingly high in Spain where almost a quarter of the labour force declared itself unemployed.

Looking at the figures of service employment evolution over the years, it seems that those countries that experienced the most limited increases in service employment over the period 1970-97, like Spain or Italy, are also the ones that suffered the largest increases in unemployment in the same period. Indeed, the correlation between both growth rates (using all countries in the panel) is of (-0.7). That correlation encourages further research to understand why service employment did not increase as much in some countries and to what extent that helps us to understand the different unemployment experiences across OECD countries.

Lastly, Table 3 shows that manufacturing employment has decreased in all countries in the sample. Specially large are the decreases in Germany and the UK, with over 10% manufacturing employment less at the end of the period as compared to the beginning. Other countries like USA and Japan experienced limited loses of manufacturing employment.

2.1 Labour market institutions

2.1.1 Time-constant institutions

Data for labour market institutions come originally from Nickell [1997]. Nickell presents averages of eight labour market institutions for 1983-1988 and for 1989-1994. B&W use the average of both periods as the time-constant value of each labour market institution. We discuss briefly the definitions and how the institutions might interfere with the workings of the labour market.

- Employment Protection Legislation (EPL): The source of the index is the OECD Jobs Studies published in 1994. The OECD ranked countries according to the legal framework governing firing and hiring. The index is the ranking of 20 countries, 20 indicating the most strictly regulated country. The OECD measure comprises characteristics both of the individual and collective contract termination. That includes features as notice time and financial compensation, rights to appeal against termination or administrative procedures.

The impact of EPL on unemployment is not clear-cut. On the one hand, it reduces the inflows into unemployment but, on the other, it smooths hiring in good times, i.e. it reduces the outflows from the unemployment pool, hence increasing unemployment duration.

- Benefit Replacement Rate: Gross benefits for a single person under 50, expressed as percentage of the most relevant wage (normally gross wage).
- Benefit Duration: It captures how long the unemployed are entitled to receive unemployment insurance. It is expressed in years. Four or more years are considered infinite duration. Both measures of the unemployment insurance system, i.e. replacement rate and duration, come from the US Department of Health and Social Services: "Social Security Programs throughout the World."

The effect of the unemployment insurance system is more clear-cut. Generous unemployment benefits increase the reservation wage allowing unemployed to be more "choosy." They also make unemployment less painful and therefore increase the bargaining power of employees, and decrease the search intensity of the unemployed.

- Active Labour Market Policies (ALMP): It refers to expenditures on activities for the unemployed that are aimed at helping them back into work. The numbers are expenditure per unemployed person taken as percentage of GDP per member of the labour force.

ALMP serve to counteract generous benefit system by making unemployed more employable and, therefore, reducing the duration of unemployment.

- Union Density: It shows the proportion of trade union members as percentage of total wage and salary earners. This variable alone does not give a good idea of the union influence in a country, though, since in many countries wage negotiations affect workers who are not union members. That is why we need to include as well the next variable.
- Union Coverage: This variable shows the share of workers actually affected by union bargaining. It takes three values. 1 means that only under 25% of workers is covered. 2 means that the percentage of covered employees is between 25 and 70%. Lastly, 3 means that more than 70% of workers are effected by union negotiation on wages.
- Wage Bargaining Coordination: In each country the degree of employer and worker wage bargaining coordination is ranked from a low coordination index of 1 to a high coordination value of 3.

Wage bargaining coordination could eliminate the leapfrogging of uncoordinated union systems. Leapfrogging refers to a situation in which a union tends to take an earlier pay settlement in a related sector as a baseline to be exceeded in its own negotiations. That generates an additional source of inflationary pressure. Note that coordination is not the same as centralization which normally means government involvement in wage negotiations. Japan and Germany, for example, have highly coordinated wage negotiations but neither is centralized.

- Tax burden on labour: This is a crude measure of the tax wedge between real labour costs and take home pay. It is the sum of the average payroll, consumption and income tax rates.

The impact of this variable on unemployment should be small. What matters is how taxes affect the ratio of after-tax unemployment benefits to after-tax

| Countries | EPL | B.R. Rate | Benefit Duration | ALMP | Union Density | Union Coverage | Co- ordination | Tax Wedge |
|------------------------|-----|--------------|---------------------|------|------------------|-------------------|-------------------|--------------|
| Australia | 4 | 37.5 | 4 | 3.0 | 42.55 | 3 | 3 | 29.8 |
| Austria | 16 | 55 | 3 | 13.4 | 48.70 | 3 | 6 | 54.1 |
| Belgium | 17 | 60 | 4 | 9.5 | 52.4 | 3 | 4 | 48.7 |
| Canada | 3 | 59.5 | .8 | 7.7 | 35.9 | 2 | 2 | 40.3 |
| Denmark | 5 | 90 | 2.5 | 12.9 | 72.6 | 3 | 6 | 47.6 |
| Finland | 10 | 69 | 3 | 12.3 | 71.5 | 3 | 5.5 | 62.8 |
| France | 14 | 57 | 3.4 | 9.24 | 11.8 | 3 | 4 | 63.3 |
| Germany | 15 | 63 | 4 | 16.2 | 33.6 | 3 | 5 | 52.8 |
| Ireland | 12 | 43.5 | 4 | 11.6 | 51.6 | 3 | 2 | 34 |
| Italy | 20 | 11 | .5 | 9.5 | 41.5 | 3 | 3.5 | 60.1 |
| Japan | 8 | 60 | .5 | 6.6 | 26.9 | 2 | 4 | 34.7 |
| Nether. | 9 | 70 | 3 | 4.3 | 28 | 3 | 4 | 57.9 |
| Norway | 11 | 65 | 1.5 | 12.3 | 56.3 | 3 | 6 | 49.3 |
| NZ | 2 | 34 | 4 | 9.7 | 47.6 | 2 | 3 | 35.1 |
| Portugal | 18 | 62.5 | .7 | 9.28 | 39.1 | 3 | 4 | 35.6 |
| Spain | 19 | 75 | 3.5 | 7.5 | 14.5 | 3 | 3 | 52.2 |
| Sweden | 13 | 80 | 1.2 | 59.3 | 81.8 | 3 | 6 | 69.8 |
| Switzerland | 6 | 70 | 1 | 14.8 | 27.6 | 2 | 4 | 39.3 |
| UK | 7 | 37 | 4 | 8.8 | 42 | 2.5 | 2 | 42.7 |
| USA | 1 | 50 | .5 | 2.6 | 17.3 | 1 | 2 | 43.2 |
| Source: Nickell [1997] | | | | | | | | |

Table 4: Labor market institutions, average 1983-94

wages. Taxes that affect equally the employed and the unemployed should not affect the labour supply. On the other hand, when capital is fully mobile and labour is not, labour taxes will be shifted entirely to workers in the long run so we should not see a large impact on labour demand either.

Table 4 shows the average values over the period 1983-1994 of all eight labour market institutions for the 20 OECD countries included in the study.

The first column presents the OECD employment protection legislation index (EPL). The countries of southern Europe have the stricter regulation and Switzerland, Denmark and the United Kingdom have regulation comparable to the one in place in USA.

The benefit system shows great variation across countries. On the top one finds the Nordic countries, Denmark, Finland and Sweden (not so much Norway) with over 70% of the gross wage in the first year of unemployment. However, these countries have strictly time-limited systems. Italy barely had an unem-

ployment benefit system at all for most of the postwar period. The next column shows the active labour market policies such as training or assistance with job search. The clear outlier is Sweden with an impressive expenditure per unemployed of 60% of GDP per potential worker. Far away follow the rest of the countries with numbers around 10%. USA and Australia are at the tail in this particular ranking. In these two countries the activities to become more employable are left to the individuals with no government intervention.

The next three columns intend to describe the wage setting system of the countries. It is remarkable that countries with the lowest union membership, as it is the case for France and Spain, present the largest union coverage, or in other words, percentage of workers affected by union agreements. In countries of central and north Europe, wage bargaining is most coordinated. Overall tax wedge does not present large differences across countries, although that would not be the case if we were to look at each of its components.

The first inspection of the data seems to indicate the existence of large institutional differences across countries.

We have added to the labour market institutions presented above a proxy for the minimum wage level in the country. The idea is that the same argument that applies to start-up costs also governs wage floors. That is, the failure to create enough jobs in the service sector could be due to the existence of wage floors, which prevented small firms from hiring more people.⁸ The proxy is the ratio of the first percentile of earnings distribution to the fifth percentile or median. It is shown in Figure 4 for four European countries (France, Germany, Italy, UK), USA and Japan. The solid line is once again the unweighted average over all OECD countries. The earnings dispersion data come from the OECD Employment Outlooks of 1993 and 1996. There is no data for Spain and Ireland, and data for the rest of the countries is very incomplete. Therefore, any comment has to be done with caution. The general trend is either a non-significant change over the period or some degree of increase. Particularly, Germany presents a very strong increase of the ratio during the years of analysis. Austria and, above all, UK and Portugal are the countries that have decreased the wage floor.

⁸We owe this point to Olivier Blanchard.

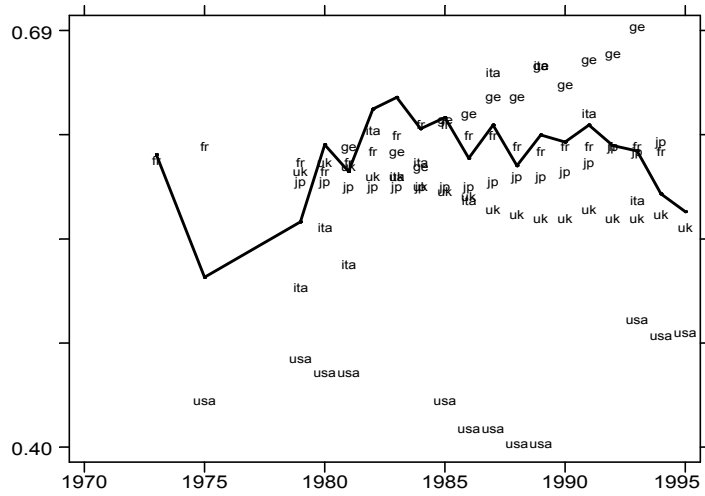


Figure 4: First to fifth decile wage

2.2 Start-up costs

The OECD has recently published an indicator of product market regulations for 21 OECD countries (excluding the new central and eastern European members, Korea, Mexico and Turkey); unfortunately, only for one year: 1998.⁹ The data come from responses of OECD countries to an ad hoc questionnaire and other sources. The information was grouped in the following regulatory domains:

- State control over business enterprises: Overall size of the public enterprise sector; existence and extent of special rights over business enterprises; legislative control over public enterprises; existence of price controls; and use of command and control regulations.
- Barriers to entrepreneurship: Features of the licensing and permit system; communication and simplification of rules and procedures; administrative burdens of corporate and sole-proprietors start-ups; industry specific administrative burdens; scope of legal barriers to entry and existence of antitrust exemptions for public enterprises.

⁹For a full description of the data-set see [19].

- Barriers to international trade and investment: Barriers to share-ownership for non-resident operators; discriminatory procedures in international trade and competition policies; regulatory barriers to trade; and average tariffs.

To calculate the overall product market regulation index, each coded indicator was re-scaled to be between 0 and 6. Then the indicators were aggregated into the summary indicators and finally into the overall indicator weighting each component according to its contribution to the overall variance in the data (factor analysis methodology).

The "barriers to entrepreneurship" indicator has three sub-domains: Regulatory and administrative opacity, barriers to competition, and administrative burdens on start-ups. The variable "administrative burdens on start-ups" is defined as "administrative burdens for corporations, for sole-proprietorship and sector specific burdens," such as those present in the retail sector. The latter is a variable of interest regarding the current analysis because it includes administrative burdens, not only of corporations but also of sole-account proprietors, which is the legal form that most start-ups assume. This is an advantage over other possible data sources such as the one offered by Djankov et al. [2000]. In that paper the authors gather data on required procedures governing entry regulation as well as the cost in time and monetary terms of following those procedures. However, data refer only to limited liability companies, which is a handicap if what one want to study is the impact of those procedures on firm creation.

Hence, the OECD sub-domain "administrative burdens on start-ups" will be used in the analysis to proxy institutions governing firm creation. Recall that it is our claim that countries with large administrative burdens on firm creation were not able to create enough service jobs to absorb displaced workers from other economic sectors. However, and for the sake of comparison, the analysis will also be done using instead the overall index of product market regulations.

Figure 5 shows a snap-shot of the start-up costs in 1998 across OECD countries. Leading the classification is Italy, followed by France and Spain. The countries where opening a new business is easiest are UK, USA and Denmark.

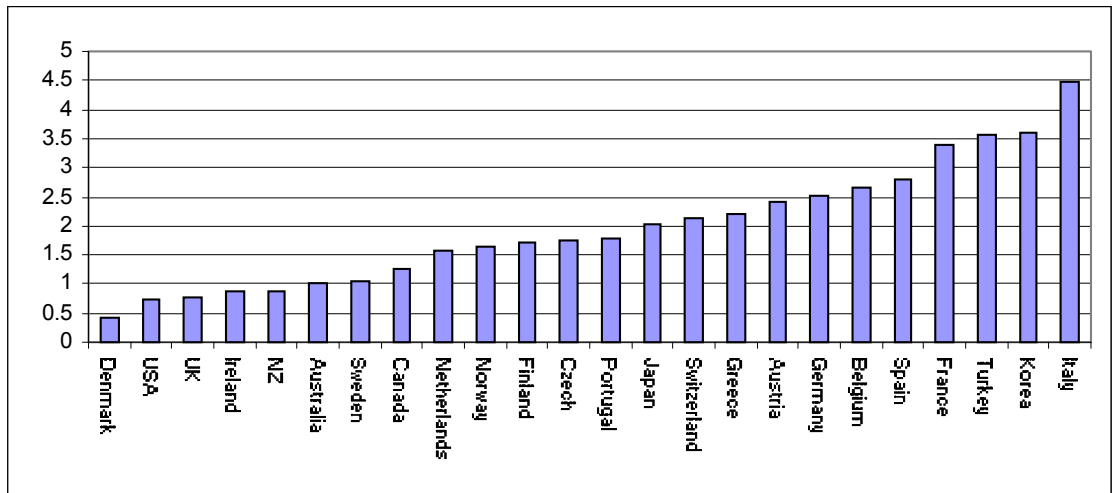


Figure 5: Administrative burdens on start-ups, 1998

2.3 Macroeconomic Shocks

B&W identify three negative macroeconomic shocks, shown in figure 6, that might have contributed to the increase in unemployment over the last decades: the decline in total factor productivity growth, the shift in labour demand, or equivalently, the increase in the capital share and, finally, the increase in long-term interest rate. The original data for the construction of the variables come from the OECD Business Sector Database. The graphs show the unweighted average of the OECD countries included in the analysis.

- **Total Factor Productivity growth:** Calculated as the growth of the Solow residual for the business sector scaled by the labour share. From the early 70s, the TFP growth, specially in Europe, has slowed down. Annual TFP growth decreased from an initial level of 5% in 1960s to 2% in the last part of the 1970s, and then remained stable thereafter. If workers and firms are slow to adapt to the slower growth of productivity, profits will decrease, and so will capital accumulation and employment. This movement would last as much as expectations take to adjust, then unemployment should go back to the initial level.
- **Real interest rate:** This variable is calculated as the long-term nominal

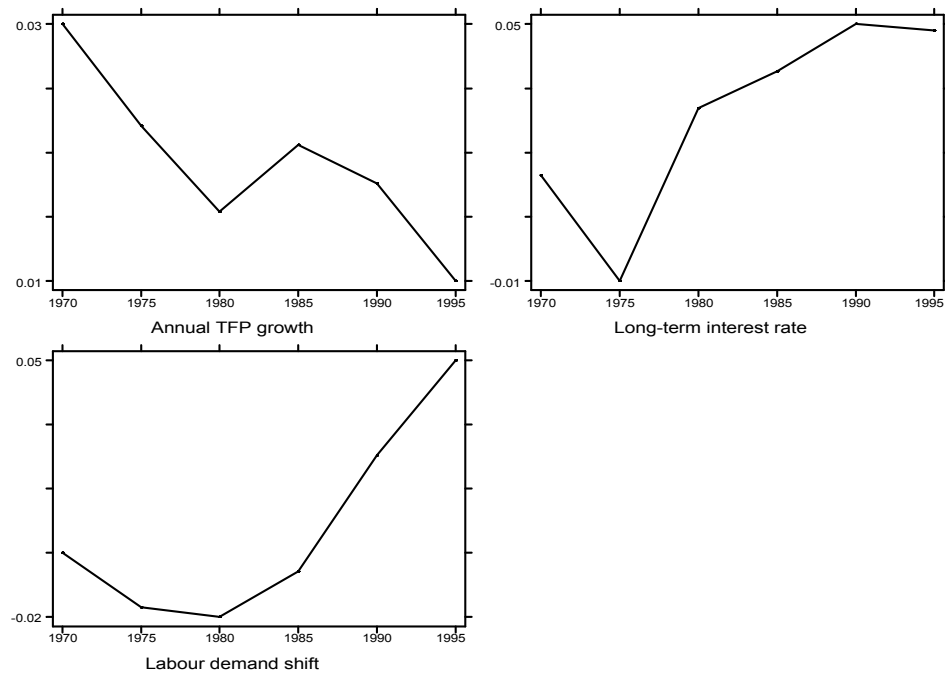


Figure 6: Blanchard and Wolfers [2000] macroeconomic shocks

rate on government bonds minus a five-year average of lagged inflation. The real interest rate was positive in the 1960s and fell sharply in the second half of the 1970s to become then large and positive until the end of the 1990s. B&W explain in their paper that they understand the real interest rate as the capital user cost changing from an exogenous shift in capital supply or of monetary policy. If that happens, investment and capital accumulation decrease, and so does employment. The movement continues until wages have adjusted so the profit level is again equal to the capital user cost (long-term equilibrium).

- **Labour demand shift:** Measured in terms of labour share in the business sector purged of the effect of factor prices. The graph in figure 6 is normalized to be equal to zero in the first period (1960-64 in B&W data-set) and, by construction, an increase can be interpreted as a proportional decrease in employment for a given level of output and wages. In most European

countries capital shares declined in the 1970s and then turned around and started increasing in the 1980s to be now at a higher level than at the beginning of the period. There are two possible reasons. The first possibility ventured by Blanchard [1999] is a technological change biased to capital. The second one is a decrease in firms' labour hoarding (when firms employ too much labour at a given wage), maybe fostered by the historical loss of power of unions within Europe. Both possibilities lead to a decrease in labour demand and, therefore, to an increase in unemployment.

Baumol [1967] claimed that the employment shift from non-service to services observed in the last decades was the result of the differential productivity growth in the different economic sectors. To be accurate, one should focus on the differential *total factor productivity growth* in manufacturing and services, rather than on the differential *labour productivity growth*. It is only total factor productivity changes that one can assume exogenous.¹⁰ Labour productivity depends, among other things, on capital accumulation which is an endogenous variable. However there is a serious problem of data availability when it comes to sector total factor productivity. Using the OECD International Sector Database to construct sector TFP rates we have been able to put together an unbalanced panel of 13 countries, out of the 20 countries under analysis.¹¹ That comes to around 50 observations when we run the regressions with five-year averages. Taking into account that there are at least 24 explanatory variables in the regression, that panel is clearly not sufficient to yield something meaningful about the impact of shocks and institutions.

Since capital stock changes only slowly, labour productivity is much more cyclical than total factor productivity. Hence one possible way of proceeding is to use a smoothed version of labour productivity as a proxy to total factor productivity. Figure 7 shows the ratio of manufacturing to service smoothed labour productivity and manufacturing to service total factor productivity evolution over time. The former is the average of 18 countries and the later is the average of 13 countries.

¹⁰We thank Marc Mündler for intensive discussions about this point.

¹¹We followed the methodology of Bernard and Jones [1996a] and [1996b] to construct sector TFP rates. They first calculate a base year manufacturing and service TFP, and then estimate the rest of the years using a Divisia-Tornquist multifactor productivity rate.

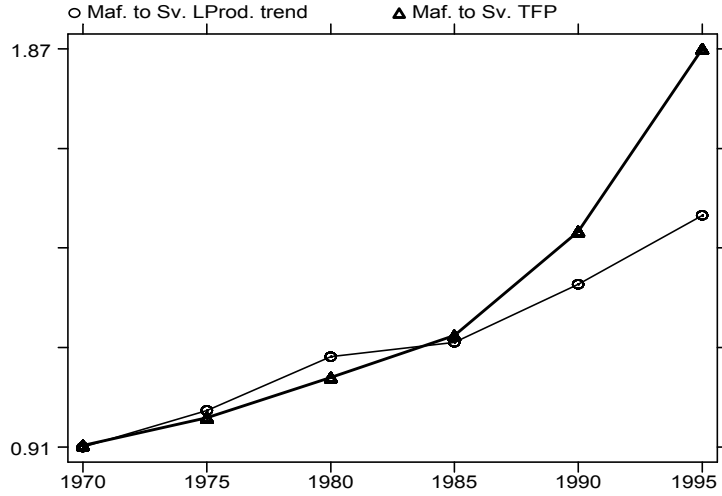


Figure 7: Manufacturing to service labour and total factor productivity

In spite of the different number of countries included, the evolution along time of both variables is similar; hence the regression with the labour productivity trend instead of the total factor productivity will point approximately in the right direction. However, we are aware of potential identification problems. To construct a better panel data-set of sector total factor productivity will be the next step in our research.

Labour productivity was first constructed using data from OECD National Accounts of sector GDP (given in current prices and national currencies). The GDP was then expressed in constant 1990 prices using a sector deflator and then expressed in USD using 1990 PPPs. After dividing GDP by the corresponding sector civilian employment, the variable was smoothed using a Hodrick-Prescott filter.¹²

3 Results

The model to be estimated was first suggested by Blanchard [1999] in a Baffi Lecture in Rome titled "European Unemployment: the Role of Shocks and In-

¹²We used a lambda equal to 100 because the data have annual frequency. We also tried with other values such as 10 or 400, also used in the literature, and results did not differ.

stitutions.” In the lecture he defended the interaction between macroeconomic shocks with various labour market institutions as the best way to explain, first the persistence of the impact of shocks on unemployment, and second, the diverse impact of similar shocks in the OECD countries.

3.1 Common unidentified shocks: a benchmark

3.1.1 Time-constant institutions

To capture those interactions, the simplest model is as follows:

$$u_{it} = \sum_i \alpha_i c_i + d_t + \sum_j \gamma_j (d_t * X_i^j) + \epsilon_{it} \quad (1)$$

where u_{it} is the dependent variable (unemployment, service or manufacturing employment rates) in country i at time t , c_i are 20 country dummies, d_t are time dummies,¹³ that is, common unidentified shocks, and X_i^j is the time-constant value over the period of the institution j in country i . What matters in the estimation is not the value of the shock or the institution but the interaction between both of them. This is the most general specification since no specific shocks are imposed. Therefore it allows to isolate the impact of the institutions from that of the shocks on the dependent variables. Hence it will be used as a benchmark.

Notice that each institution is allowed to interact separately with the same linear combination of shocks. The model is therefore non-linear.¹⁴ B&W estimate the model using non-linear least squares and do not correct for heteroscedasticity present in the regression. Although the coefficients are consistent, and therefore it is legitimate to use them to make estimations, they are not efficient, that is, with minimum variance, so the standard errors are not correct. In this paper the model will be estimated using an equivalent maximum likelihood function which allows for White’s heteroscedasticity-consistent variances and standard errors. The advantage of the White method of correction is that one does not need to know the exact nature of the heteroscedasticity problem

¹³The first period is left out so it becomes the constant. Therefore the country dummies can be interpreted as the unemployment (or sector employment rates) in the first period.

¹⁴We could try to make it linear in the following way,

$u_{it} = \sum_i \alpha_i c_i + d_t + \gamma_1 \beta_1 (d_1 * X_i^1) + \gamma_1 \beta_2 (d_2 * X_i^1) + \gamma_2 \beta_1 (d_1 * X_i^2) + \gamma_2 \beta_2 (d_2 * X_i^2) + \dots + \epsilon_{it}$
 where we have written the example for two time dummies or shocks (d_1 and d_2 with coefficients β_1 and β_2) and two institutions (X_i^1 and X_i^2 with coefficients γ_1 and γ_2). But we would then have to impose non-linear restrictions on the coefficients, so $\frac{\gamma_1 \beta_1}{\beta_1} = \frac{\gamma_1 \beta_2}{\beta_2}$.

and still make asymptotically valid (i.e. in large samples) statistical inferences about the true parameter values.

Autocorrelation is only a problem in the regressions with common shocks, proxied by time dummies. The deviation from the average of the dependent variable, unemployment rate or sector employment rates, is clearly cyclical. In the first set of regressions time dummies are used, so there is nothing in the right-hand side of expression 1 to account for that cyclical behavior, hence the error term is autocorrelated. However, autocorrelation is corrected for when identified shocks instead of time dummies are introduced in the regression.

Tables 5, 6 and 7 show respectively the results for the unemployment, service and manufacturing regression. Five year averages have been taken (with the exception of the last period which only comprises 1995-1997) to smooth out short-term fluctuations. All institutions are expressed in deviations to the cross-country mean. Wage bargaining coordination and active labour market policies have been multiplied by (-1) so the expected impact of all institutions on unemployment is positive. Country and time dummies were included in all regressions.

Six different regressions have been run with each dependent variable. The first one replicates that of B&W. The results are very similar although not exactly the same since the observation period is not the same. The second regression adds to the eight labour market institutions the administrative burdens on start-ups provided by the OECD (more concretely, the data is from 1998, which is taken as the time-constant value of the institution). Many unemployment studies include regional labour mobility (or immobility), proxied by the extent of house ownership, as a control variable in unemployment regressions. We do so as well in the third regression. The fourth regression substitute start-up costs by the interaction between start-up costs and the initial non-service employment share of the working age population. We claim that the combination of large shifts of employment from non-service to service sector with administrative barriers to firm creation hampers employment creation, or equivalently, fosters unemployment. In the fifth regression start-up costs have been substituted by minimum wages (proxied by the first percentile of the earnings distribution to the median wage). Regression six includes the overall product market regulation index.

Dependent variable: Unemployment rate

| | 1 | 2 | 3 | 4 | 5 | 6 |
|-----------------------|-----------|-----------|------------|------------|------------|-----------|
| B. Duration | .23 (.04) | .26 (.05) | .27 (.06) | .29 (.05) | .19 (.04) | .29 (.06) |
| B.R.Rate | .02 (.00) | .02 (.01) | .03 (.00) | .03 (.01) | .00 (.00) | .02 (.00) |
| EPL | .05 (.02) | .01 (.02) | -.03 (.03) | -.01 (.02) | .02 (.02) | .03 (.02) |
| U.Density | .01 (.01) | .02 (.01) | .01 (.01) | .02 (.01) | .02 (.01) | .01 (.01) |
| Tax Wedge | .02 (.01) | .01 (.01) | .01 (.01) | .00 (.01) | .02 (.01) | .02 (.01) |
| Coordination | .26 (.06) | .33 (.06) | .18 (.06) | .38 (.05) | .12 (.07) | .32 (.05) |
| U.Coverage | .07 (.19) | .04 (.19) | .11 (.17) | .01 (.19) | -.07 (.20) | .04 (.21) |
| ALMP | .02 (.01) | .01 (.01) | -.01 (.01) | .01 (.01) | .02 (.01) | .01 (.01) |
| Start-up costs | | .38 (.12) | .58 (.18) | | | |
| SUC*initial nsv | | | | .73 (.16) | | |
| Home Ownership | | | 3.1 (.75) | | | |
| Minimum Wage | | | | | 1.4 (.9) | |
| Product Market Regul. | | | | | | .49 (.17) |
| Observations | 117 | 117 | 111 | 117 | 105 | 117 |

Notes: Standard errors in brackets.

When home ownership is introduced, Portugal drops.

When minimum wages are introduced, Ireland and Spain drop.

Table 5: Unemployment Regression, common shocks and time-constant institutions

Dependent variable: Service employment ratio

| | 1 | 2 | 3 | 4 | 5 | 6 |
|-----------------------|------------|------------|------------|------------|------------|------------|
| B. Duration | -.10 (.03) | -.12 (.03) | -.10 (.04) | -.13 (.03) | -.10 (.03) | -.10 (.03) |
| B.R.Rate | -.00 (.00) | -.01 (.00) | -.01 (.00) | -.01 (.00) | -.00 (.00) | -.00 (.00) |
| EPL | -.03 (.01) | -.01 (.01) | -.01 (.02) | -.01 (.01) | -.03 (.01) | -.04 (.01) |
| U.Density | -.01 (.00) | -.01 (.00) | -.01 (.00) | -.01 (.00) | -.01 (.00) | -.01 (.00) |
| Tax Wedge | -.01 (.01) | -.00 (.01) | .00 (.01) | .00 (.01) | -.00 (.01) | -.01 (.01) |
| Coordination | -.13 (.04) | -.17 (.04) | -.10 (.05) | -.17 (.04) | -.08 (.06) | -.13 (.04) |
| U.Coverage | .19 (.14) | .19 (.13) | .13 (.11) | .21 (.13) | .15 (.12) | .19 (.14) |
| ALMP | -.00 (.01) | .00 (.01) | .01 (.01) | .00 (.01) | .00 (.01) | -.00 (.01) |
| Start-up costs | | -.21 (.09) | -.23 (.1) | | | |
| SUC*initial nsv | | | | -.32 (.13) | | |
| Home Ownership | | | -1.3 (.44) | | | |
| Minimum Wage | | | | | .87 (.83) | |
| Product Market Regul. | | | | | | .01 (.12) |
| Observations | 117 | 117 | 111 | 117 | 105 | 117 |

Notes: Standard errors in brackets.

When home ownership is introduced, Portugal drops.

When minimum wages are introduced, Ireland and Spain drop.

Table 6: Service Regression, common shocks and time-constant institutions

Dependent variable: Manufacturing employment ratio

| | 1 | 2 | 3 | 4 | 5 | 6 |
|-----------------------|------------|------------|------------|------------|------------|------------|
| B. Duration | .19 (.06) | .24 (.05) | .22 (.06) | .26 (.05) | .19 (.06) | .24 (.07) |
| B.R.Rate | -.01 (.00) | .00 (.00) | -.00 (.00) | .00 (.00) | -.01 (.01) | -.01 (.00) |
| EPL | -.02 (.02) | -.08 (.02) | -.04 (.03) | -.09 (.02) | -.01 (.02) | -.03 (.02) |
| U.Density | -.02 (.01) | -.00 (.01) | .01 (.01) | -.00 (.01) | -.01 (.01) | -.02 (.01) |
| Tax Wedge | .01 (.01) | -.00 (.01) | -.00 (.01) | -.01 (.01) | .01 (.01) | .01 (.01) |
| Coordination | -.17 (.07) | -.05 (.06) | .08 (.07) | -.07 (.06) | -.04 (.06) | -.12 (.07) |
| U.Coverage | .02 (.22) | .00 (.18) | -.06 (.20) | -.03 (.19) | -.10 (.19) | .01 (.21) |
| ALMP | -.02 (.01) | -.02 (.01) | -.01 (.01) | -.03 (.01) | -.01 (.01) | -.02 (.01) |
| Start-up costs | | .61 (.13) | .42 (.16) | | | |
| SUC*initial nsv | | | | .86 (.2) | | |
| Home Ownership | | | -2.7 (.67) | | | |
| Minimum Wage | | | | | 2.6 (.85) | |
| Product Market Regul. | | | | | | .41 (.25) |
| Observations | 117 | 117 | 111 | 117 | 105 | 117 |

Notes: Standard errors in brackets.

When home ownership is introduced, Portugal drops.

When minimum wages are introduced, Ireland and Spain drop.

Table 7: Manufacturing Regression, common shocks and time-constant institutions

There is a lot of information in the three tables shown above so let us take you slowly through the most interesting results. The first important remark is that the unemployment and the service results look like two sides of the same coin. When benefit duration, replacement rate, employment protection legislation and wage bargaining coordination are positive and significant in the unemployment regression, they show as negative and significant in the service regression. This result confirms what the first look at the data suggested; there is a close relationship between unemployment and service employment.

Benefit duration is very robust and significant in all regressions. Countries where unemployed receive long benefits experience more unemployment. More interesting may be the service and manufacturing regressions. Countries with longer benefits than average are countries with less service and more manufacturing employment.

The positive sign of benefit duration, the case is the same for the minimum wage, in the manufacturing regression is a very robust, and interesting, result. It has been reported before that high and long unemployment benefits increase the reservation wage of workers. A high reservation wage means that workers

are less willing to accept low-paid jobs in the service sector and prefer instead to queue in the manufacturing sector. Thus, the shift from non-service to service economy is delayed.

Consequently the negative sign of benefit duration in the service regression is not surprising. However, there could be something else to the negative impact of benefits on service employment. The report of the Global Entrepreneurship Monitor of 2001 found that countries with generous unemployment insurance systems were systematically less "entrepreneurial".¹⁵ This was explained in the following way: There are two types of start-ups. One type is the result of a business opportunity and the other type is the result of desperation, of the need to make a living. Generous benefit systems are taking away part of the desperation of the unemployed and, therefore, decreasing the second type of start-ups. Hence, if we accept the intimate connection between start-ups and service sector job creation, generous benefit systems can be expected to decrease service employment.

Long unemployment benefits and high wage floors are normally the result of strong union power in the country. The regressions include three bargaining related variables: union density, union coverage and wage bargaining coordination. The first remarkable fact is the lack of significance over all specifications of union coverage. The second remark is that both union density and wage bargaining coordination affect significantly service employment and unemployment, and are relatively unimportant in explaining manufacturing employment. This result is consistent with the observed impact of benefits and minimum wages: unionized countries have higher union premium, i.e. the relative wage in manufacturing is higher, which means that migration to the service sector has been slower.

Start-up costs, and the overall index of product market regulations, have a consistent positive and significant sign in the unemployment regression. The variable start-up costs is also negative in the service regression and positive in the manufacturing regression. Countries where starting a business is cumbersome have paid in terms of service employment, and of unemployment. The results are reinforced when instead of start-up costs we run the regression with

¹⁵The Global Entrepreneurship Monitor is an international project led by Paul Reynolds (Babson College and the London Business School) aimed at measuring entrepreneurship across countries in a comparable way. See www.gemconsortium.org.

the interaction of start-up costs with initial non-service employment. Start-up costs have a higher impact when the 1970 share of population of working age outside the service sector is larger. In other words, countries that had to go a long way from non-service to service economies paid a higher price in terms of unemployment for institutions that delayed the sectorial shift.

The impact of the overall index of product market regulations, however, differs from the one of start-up costs in both sector employment regressions. It is not significant in the service regression and it is significant only at 11% significance level (although positive, as the start-up costs) in the manufacturing one. Recall that the overall OECD index groups regulations that cover a much wider range of economic activities than start-up costs, such as state control over the private sector, barriers to international trade or existence of anti-trust exemptions for public enterprises. Some of those domains are not, or negatively, correlated to start-up costs so they are capturing different phenomena.¹⁶ Since service employment takes place at small local firms, some of the regulations included in the overall index do not apply, which could explain the non-significance of the variable in the service regression.

When start-up costs (or the interaction term) are included in the unemployment regression, several labour market institution variables drop. Most dramatic is the effect of start-up costs on employment protection legislation. Once start-up costs are introduced, EPL does not show up as significant again. This is so in almost all specifications we tried and therefore very robust, and is consistent with evidence based on job flows. The high correlation between start-up costs and EPL (correlation coefficient of 0.73) may explain the significance of EPL in other aggregate studies. When minimum wages are included, instead of start-up costs, EPL reappears as significant, which seems to confirm the previous remark.

To give an idea of the magnitude of the coefficients, Table 8 reproduces in its second column the estimation results for the model of unemployment with start-up costs (Table 5, regression 2). The third column of the table shows the variation range of each independent variable. The variation is in terms of deviations to the cross-country mean, which is taken as reference point. The

¹⁶For example, barriers to trade and start-up costs have a correlation coefficient equal to (-.03). The two sub-domain of barriers to entrepreneurship, "administrative opacity" and "administrative burdens on start-ups," have a correlation coefficient of (-.17).

| Variable | Coefficients from Table 5, column (2) | Range of variation of institution | | Implied range of effect of shock | |
|----------------|---|--------------------------------------|---------|-------------------------------------|---------|
| | | minimum | maximum | minimum | maximum |
| Time effect | .07 | | | | |
| B. Duration | .26 | -1.93 | 1.57 | -.50 | .41 |
| B.R. Rate | .02 | -46.35 | 32.65 | -1.11 | .78 |
| U.Density | .02 | -30.98 | 39.02 | -.52 | .65 |
| Coordination | .33 | -2.05 | 1.95 | -.68 | .65 |
| Start-up costs | .38 | -1.49 | 2.80 | -.57 | 1.07 |

Note: Only coefficients significant at 10% are included in table

Table 8: Estimated impact of institutions on unemployment after a common shock

fourth column shows the impact of the same shock on the country with the "best" and the "worst" institutional setting, i.e. on the countries with the largest -negative and positive- deviations to the cross-country mean. For example, Denmark is the country with the lowest start-up costs and Italy the one with the "worst" or largest value of the institution among all countries in the sample. The estimations indicate that the time dummy would increase unemployment by 7% in a country with the average value of all institutions. The country with the highest start-up costs would have an additional -relative to the country with average start-up costs- increase in unemployment of 1.07%. Denmark, however, would see an increase in unemployment 0.57% smaller than the country with the average value of start-up costs.

Take the case of a particular country, for example Italy. The average unemployment rate in the first period of analysis, 1970-1975, was of 4%. During the last period, 1995-1997, the average rate was 12%. Hence unemployment increased 8 percentage points over the period of analysis. The model with common shocks and time-constant institutions predicts an unemployment increase of 6.1% in that same period. As the table above shows, 7 percentage points of that predicted increase are due to time shocks. The remaining responds to the Italian specific institutional framework. Table 9 shows the contribution to the predicted change in unemployment of each of the institutions analyzed in the paper for Italy and other five OECD countries.

Benefit duration and replacement rates have been merged into "Benefit system" and union coverage, union density and wage bargaining coordination con-

| Unemployment: common shocks | Belgium | Finland | Italy | Japan | UK | USA |
|--|---------|---------|--------|-------|-------|-------|
| Actual increase, 1970-97 | 12% | 15% | 8% | 2% | 5% | 0% |
| Predicted increase, 1970-97 | 14.7% | 11% | 6.1% | 1.7% | 7.8% | 0.1% |
| Percentage explained by time (given average institutions) | 7% | 7% | 7% | 7% | 7% | 7% |
| Percentage explained by institutions | 7.7% | 3.9% | -0.9% | -5.3% | 0.8% | -6.9% |
| Benefit system | 3.3% | 3% | -11.3% | -3.1% | -0.6% | -4.7% |
| EPL | 0.5% | -0.04% | 0.8% | -0.2% | -0.3% | -0.8% |
| Union activity | 1.1% | -1.2% | 1% | -2.2% | 4.4% | 1.1% |
| Tax Wedge | 0.1% | 0.02% | 0.9% | -0.9% | -0.3% | -0.3% |
| ALMP | 0.2% | -0.01% | 0.2% | 0.5% | 0.3% | 0.8% |
| Start-up Costs | 2.4% | 0% | 7.5% | 0.5% | -2.7% | -3% |

Table 9: Predicted increase in unemployment: contribution of institutions

form the institution "Union activity." Following with the example of Italy, it is known that Italy barely had an unemployment benefit system at all for most of the postwar period, hence the negative contribution to the unemployment increase over the period. Union activity, employment protection legislation, the tax wedge and active labour market policies have all marginally contributed to the unemployment rise in Italy, according to our estimations. The single institution that can explain a substantial increase in Italian unemployment is start-up costs.

Turning to the remarkable unemployment performance of the United States, very well predicted by the model, we can see that it is almost entirely due to the lower than average benefit system and start-up costs. Belgium is the opposite case: its bad unemployment records are due to unemployment benefits and start-up costs well above the OECD average.

Hence, according to the model with common shocks and time-constant institutions, the two single labour market institutions that have contributed the most to the explanation of the diverse OECD unemployment evolution are the benefit system (benefit duration and replacement rate) and the start-up costs of firms.

3.1.2 Time-varying institutions

All regressions have also been run with time-varying institutions. The data come from N&N.¹⁷¹⁸ There are at least three problems with those regressions, though. First, there are comparable start-up cost data across OECD countries for one year only, 1998. Moreover, there are so many missing values in the measure of minimum wages that it would be advisable to use the time-constant value of minimum wage instead of the time-varying one. Therefore, start-up costs and the wage floor are time-constant while all the rest of the variables are time-varying (although some do not vary that much). The second, smaller, drawback is that time-varying data are available only for six labour market institutions, instead of the eight used above. Union coverage and active labour market policies are left out of the time-varying analysis. Given that the explanatory variables are not entirely independent one of another, this omission could affect the results.

Last but not least, institutions change very slowly over time so the value of one institution in a country at a certain period is certainly correlated with the value of the same institution at the previous or posterior period. This means that the institutions' coefficients could be biased. Indeed, one general feature of all regressions using time-varying data on institutions is that the estimated coefficients are larger, sometimes much larger, than those estimated with time-constant institutions. We suspect that this problem could be behind some change of signs. Hence, all interpretations have to be done with caution.

In order not to overload the text, and the reader, the tables with the estimations of the model with time-varying institutions are shown in the appendix.

The unemployment and manufacturing regressions replicate in general terms those using time-constant institutions. Benefit duration and replacement rate are positive and significant and EPL drops when start-up costs are introduced in the unemployment regression. Start-up costs are positive and significant (although this is hardly surprisingly since their value is time-constant, as before) and the bargaining variables seem to increase, when interacted with shocks,

¹⁷Although the definition and construction of the variables in N&N are very similar to the ones in B&W, there are slight differences. Maybe the most important one is the construction of the benefit duration index. B&W use the number of years of entitlement. N&N use a weighted average of the replacement rates at different moments of the unemployment spell.

¹⁸We have run the regressions with yearly data (485 observations) and five-year average periods as before. The results are very similar in both cases.

unemployment. The only change in the unemployment regression is to be found in the impact of the tax wedge on unemployment, now the coefficient being negative and significant. The reason could be slight measurement differences in the construction of the variable. Those differences affect fundamentally the value of the tax wedge in Spain, and since the Spanish unemployment is very large, that affects the average impact of the tax wedge on unemployment. Once Spain is dropped from the regression, the tax wedge shows a positive coefficient as with time-constant institutions.

The benefit replacement rate and EPL, which were significantly decreasing service employment with time-constant institutions, are now positive and, in some regressions, significant. That is not the result of measurement differences because if the regression is run with N&N data averaged over time, both variables have a negative coefficient, as before. There are three possible explanations to the positive sign of EPL and benefit replacement rate: the time evolution of both variables has been favorable to service job creation; there is a spurious relationship between the rise in service employment and the rise in both institutions; or there is a problem of biased coefficients.

To include in the analysis the variation over time of labour and product market institutions is necessary. This is only a first attempt in that direction, which shows that the main results obtained with time-constant institutions are robust. But better data and further econometric work are called for.

3.2 Identified shocks

We now turn to identify those shocks that before were left unidentified and captured by time dummies. The model to be estimated is as follows:

$$u_{it} = \sum_i c_i + \sum_k \beta_k S_{kit} + \sum_j \gamma_j \left(\sum_k \beta_k S_{kit} * X_i^j \right) + \epsilon_{it} \quad (2)$$

where S_{kit} is shock k in country i at time t . One can think about a composite of shocks that interacts with the labour market institutions. There are several candidates for "bad" shocks that might be responsible for the observed increase in unemployment in the OECD countries in the last three decades.

Blanchard [1999] and then B&W identify three of those shocks: a slowdown in the total factor productivity growth; an increase in the long-term real interest rate; and finally, an increase in the capital share, or equivalently, a negative shift

of labour demand. The focus of this paper is on sector differential productivity growth rather than on aggregate productivity slowdown. It is argued that manufacturing and service differential productivity growth is behind the observed employment shift to the service sector in developed economies. We claim that countries that did not have friendly institutions to service job creation were not able to absorb displaced workers from other sectors which resulted in higher unemployment.

To test that claim, the first of B&W shocks, aggregate TFP growth, is substituted by the manufacturing to service TFP. Then the interaction of shocks with the labour market institutions and start-up costs is used as explanatory variables in the unemployment and sector employment regressions. For the sake of comparison we have run all regressions using aggregate TFP growth as in B&W. Results can be found in the appendix.

Sector TFP is proxied by the "filtered" sector labour productivity or labour productivity trend, as we explained with some detail in the section dedicated to the description of the data. In general terms the first and last period of data are missing for all countries, Ireland and Switzerland drop totally and Spain has only two periods of data available. Our data set is therefore badly reduced (from 106 to 78 observation in the best case). As a result we will neither run the regressions controlling for house ownership nor the regressions with time-varying institutions.¹⁹

Tables 10, 11 and 12 show the estimation results of the model with three identified shocks, labour demand shift, long-term interest rate, and manufacturing to service labour productivity, and time-constant institutions. Column (1) shows the estimation of the model only with labour market institutions, column (2) includes start-up costs, column (3) substitutes start-up costs by minimum wages, and column (4) includes the OECD overall index of product market regulation, in place of the administrative burdens on start-ups.

All the three shocks are entered in levels and can be interpreted as deviations to the value in the first period of analysis, or as deviations to the country average. A Wald test to test for their joint significance has been performed and in all cases we can reject the hypotheses of all coefficients being zero.

¹⁹When house ownership is controlled for, Portugal drops. The number of observations in the regression with identified shocks and time-varying institutions would be 74 in the best of the cases.

Dependent variable: Unemployment rate

| | 1 | 2 | 3 | 4 |
|----------------------------------|-------------|------------|------------|------------|
| Labour Demand Shift | .09 (.07) | .07 (.05) | .09 (.06) | .05 (.06) |
| LR interest rate | .04 (.09) | .04 (.09) | .03 (.09) | .05 (.09) |
| Manufacturing to service L.Prod. | .07 (.01) | .07 (.01) | .07 (.01) | .08 (.01) |
| B. Duration | .26 (.11) | .35 (.11) | .29 (.11) | .44 (.12) |
| B.R.Rate | -.02 (.01) | -.00 (.01) | -.01 (.01) | -.02 (.01) |
| EPL | .02 (.04) | -.12 (.08) | .04 (.04) | -.09 (.06) |
| U.Density | .04 (.01) | .05 (.01) | .05 (.01) | .02 (.01) |
| Tax Wedge | -.03 (.02) | -.05 (.02) | -.03 (.02) | -.03 (.01) |
| Coordination | .09 (.21) | .19 (.19) | .10 (.18) | .04 (.18) |
| U.Coverage | -.26 (.42) | -.32 (.43) | -.07 (.44) | -.11 (.38) |
| ALMP | -.00 (-.01) | -.03 (.01) | -.00 (.01) | -.03 (.01) |
| Start-up costs | | .97 (.52) | | |
| Minimum Wage | | | -4.2 (2.1) | |
| Product Market Regulation | | | | 1.5 (.68) |
| Wald Test (3 shocks) | 83 | 74 | 83 | 92 |
| Observations | 78 | 78 | 76 | 78 |

Notes: Standard errors in brackets.

When minimum wages are introduced, Ireland and Spain drop.

Table 10: Unemployment Regression: Identified shocks and time-constant institutions

Dependent variable: Service employment ratio

| | 1 | 2 | 3 | 4 |
|----------------------------------|------------|------------|------------|------------|
| Labour Demand Shift | .16 (.07) | .26 (.13) | .15 (.07) | .20 (.09) |
| LR interest rate | .29 (.11) | .30 (.14) | .28 (.11) | .29 (.12) |
| Manufacturing to service L.Prod. | .16 (.01) | .16 (.01) | .17 (.02) | .15 (.02) |
| B. Duration | -.09 (.04) | -.12 (.04) | -.07 (.05) | -.14 (.05) |
| B.R.Rate | .00 (.00) | -.01 (.01) | .00 (.02) | .00 (.00) |
| EPL | -.03 (.02) | .07 (.03) | -.03 (.02) | .00 (.04) |
| U.Density | -.01 (.01) | -.01 (.00) | -.00 (.01) | -.00 (.01) |
| Tax Wedge | -.01 (.01) | .00 (.01) | -.01 (.01) | -.01 (.01) |
| Coordination | .09 (.11) | .00 (.09) | .08 (.13) | .07 (.11) |
| U.Coverage | -.11 (.29) | -.05 (.29) | -.02 (.32) | -.18 (.32) |
| ALMP | .00 (.01) | .02 (.01) | .00 (.01) | .01 (.01) |
| Start-up costs | | -.66 (.26) | | |
| Minimum Wage | | | -2.0 (2.6) | |
| Product Market Regulation | | | | -.50 (.39) |
| Wald Test (3 shocks) | 278 | 328 | 183 | 278 |
| Observations | 78 | 78 | 76 | 78 |

Notes: Standard errors in brackets.

When minimum wages are introduced, Ireland and Spain drop.

Table 11: Service Regression: Identified shocks and time-constant institutions

Dependent variable: Manufacturing employment ratio

| | 1 | 2 | 3 | 4 |
|----------------------------------|------------|------------|------------|------------|
| Labour Demand Shift | .03 (.05) | .04 (.05) | .03 (.05) | .05 (.05) |
| LR interest rate | -.05 (.08) | -.05 (.08) | -.06 (.09) | -.05 (.08) |
| Manufacturing to service L.Prod. | -.12 (.01) | -.12 (.01) | -.12 (.01) | -.12 (.01) |
| B. Duration | .11 (.06) | .13 (.07) | .11 (.06) | .17 (.07) |
| B.R.Rate | -.02 (.01) | -.01 (.01) | -.02 (.01) | -.02 (.01) |
| EPL | -.03 (.01) | -.07 (.03) | -.04 (.01) | -.07 (.03) |
| U.Density | .00 (.01) | .00 (.01) | -.00 (.01) | -.00 (.01) |
| Tax Wedge | -.02 (.01) | -.02 (.01) | -.02 (.01) | -.02 (.01) |
| Coordination | .07 (.13) | .11 (.10) | .09 (.14) | .07 (.12) |
| U.Coverage | .22 (.19) | .22 (.18) | .24 (.23) | .24 (.19) |
| ALMP | -.03 (.01) | -.03 (.01) | -.03 (.01) | -.04 (.01) |
| Start-up costs | | .21 (.22) | | |
| Minimum Wage | | | .29 (1.1) | |
| Product Market Regulation | | | | .41 (.36) |
| Wald Test (3 shocks) | 165 | 162 | 143 | 164 |
| Observations | 78 | 78 | 76 | 78 |

Notes: Standard errors in brackets.

When minimum wages are introduced, Ireland and Spain drop

Table 12: Manufacturing Regression: Identified shocks and time-constant institutions

The first remarkable thing is that the labour demand shift and the long-term interest rate are not significant in the unemployment and manufacturing regressions when sector labour productivity is controlled for.²⁰ On the other hand, the manufacturing to service labour productivity is always very significant (t-statistics of about 10 in absolute value). That shock is positive in the unemployment regression, positive in the service regression and negative in the manufacturing regression. All signs are as expected since, according to Baumol [1967], the increase in manufacturing productivity relative to service caused the shift of employment from non-service to service sectors. Hence it explains the increase in service employment and the decrease in manufacturing employment. The second remarkable issue is to be found in the service regression. It has been mentioned that the increase in manufacturing to service labour productivity increases significantly service employment, as expected. The striking thing is that the two other shocks included in the analysis, labour demand shift and increase in the interest rate, also increase significantly service employment. The most likely explanation is the existence of a spurious relationship between the growth in service employment and the growth in the capital share and interest rate.

Turning directly to the administrative burdens on start-ups, the focus of this paper, we observe the following. The coefficient of start-up costs is higher than with unidentified shocks in all regressions. It is positive and significant at 10% significance level in the unemployment regression, very significant and negative, in the service regression, and positive but non-significant in the manufacturing regression. What these results are telling us is that the shift of employment from non-service to service activities had a very high cost in terms of service employment, reflected in overall unemployment, in countries where starting a business is more cumbersome than average.

The beauty is that when the regression is run with the *aggregate* TFP growth, as in Blanchard and Wolfers [2000], there is no evidence that countries with more administrative burdens on firm creation than the average have a worse service employment performance. Burdens on firm creation become significant only when interacted with a shock that caused the relocation of large numbers of

²⁰ When aggregate TFP growth is included instead, the long-term interest rate is significant in all regressions. Labour demand shift is close to significance at 10% level in the unemployment regression. B&W found the labour demand shift to be significant. However when heteroscedasticity is controlled for, the labour demand shift loses its significance.

workers in the service sector.

When the overall product market regulation index is included instead of start-up costs, the results change slightly. Product market regulations, when interacted with the sector differential productivity, increase significantly unemployment (this result is more significant than when start-up costs were included). The difference, as it was the case when regressions were run with time dummies, is to be found in the service regression, where product market regulations have a non-significant negative coefficient.

Countries with longer benefits than average create less jobs in the service sector (where the private initiative is very important), have a larger share of the working age population employed in the manufacturing firms and experience, in general, higher unemployment than an average country.

With respect to the rest of the institutions, the most remarkable changes from before are as follow. First, EPL is non-significant from the beginning in the unemployment regression (before it was significant when start-up costs were excluded). In the service regression, EPL goes from being negative and significant without start-up costs to positive and significant when they are included. When minimum wages are controlled for instead, the sign is again negative (although non-significant). Therefore the behavior observed before, when the EPL index systematically dropped out when start-up costs were introduced, is here amplified.

To get a feeling of the contribution of the three shocks analyzed in the section to the increase in unemployment, let us take a look in more detail to Italy – a country that has experienced a large relocation of workers into the service sector. The predicted rise of Italian unemployment over the period is of 7.25%, much closer to the actual 8% than the predicted increase of the model with common unidentified shocks. Of those 7.25 percentage points, shocks (given average institutions) can explain a rise equal to 5.7% and institutions explain the remaining 1.5%. The shift of employment to the service sector explains alone 5% points of the 5.7% corresponding to the shocks.

The large contribution of that shock is a feature of every country; in average accounts for around 60% of the total predicted change in unemployment. That figure is quite close to the one given by Marimon and Zilibotti [1998], who calculated that almost 80% of the long-run employment differential growth across

| Unemployment: Identified shocks | Belgium | Finland | Italy | Japan | UK | USA |
|---|---------|---------|-------|-------|-------|-------|
| Actual increase, 1970-97 | 12% | 15% | 8% | 2% | 5% | 0% |
| Predicted increase, 1970-97 | 10% | 13.3% | 7.3% | 1% | 4.4% | -0.2% |
| Percentage explained by shocks (given average institutions) | 5.2% | 8.2% | 5.7% | 1.5% | 2.8% | 3% |
| Labour Demand Shift | -0.3% | 0.1% | 0.4% | -0.1% | -0.3% | 0.4% |
| Long-term Interest Rate | 0.1% | 0.2% | 0.2% | 0.1% | 0.1% | 0.1% |
| Manufacturing to service productivity | 5.4% | 7.9% | 5.1% | 1.5% | 3% | 2.5% |
| Percentage explained by institutions | 4.8% | 5.1% | 1.5% | -0.5% | 1.7% | -3.2% |
| Benefit system | 2.8% | 1.3% | -3.2% | -1.1% | 1.6% | -2% |
| EPL* | -4.1% | 0.4% | -6.6% | 0.5% | 1.1% | 3.4% |
| Union Activity* | 2.3% | 9.7% | -0.3% | -1% | 1.2% | -1.3% |
| Tax wedge | -0.2% | -5.6% | -3.4% | 1% | 0.7% | 0.7% |
| ALMP | -0.3% | 0.1% | -0.4% | -0.2% | -0.2% | -0.7% |
| Start-up costs | 4.4% | -0.3% | 15.3% | 0.3% | -2.8% | -3.3% |
| Institutions with * are non-significant at 10% significance level | | | | | | |

Table 13: Predicted increase in unemployment: contribution of shocks and institutions

countries and industries is accounted by different initial distribution of labour across industries and only 20% by country effects.

We turn now to the contribution of the different institutions to the unemployment increase over the period, for Italy and five other OECD countries. Table 13 shows that the predictive power of the regression with identified shocks and time-constant institutions is generally better than the one with common shocks.

The figures in the table have to be taken with extreme caution: employment protection legislation is non-significantly different from zero and has reverse sign. So are two of the three variables included in the union activity group. Of the rest of significant variables, ALMP and the tax wedge have a negative sign, instead of the expected positive one, in the regression.

There is a general decrease in the contribution to the unemployment change of the benefit system (i.e. in Italy, now the figure is -3.2%, compared to the -11.28% in the regression with common unidentified shocks) now that shocks have been identified. Secondly, the contribution of start-up costs, now that are interacted with identified shocks, to the unemployment rise is very large. That contribution is two times as large as the already important contribution of start-up costs when shocks were not specified in Italy and Belgium, and approximately the same in Finland, Japan, UK and USA.

Taking the results with caution due to the numerous missing values in the data-set, start-up costs emerge as a relevant variable to explain unemployment given the shift of employment from non-services to services experienced by most western economies over the last decades.

4 Conclusion

The current paper intends to make a contribution to the literature aimed at explaining the rise, and consequent evolution, of unemployment since the 1970s in most western economies. For that purpose, the paper of Blanchard and Wolfers [2000], where unemployment is explained as the result of interactions between shocks and labour market institutions, is extended in two ways. First, a macroeconomic shock surprisingly neglected in the literature is introduced, namely, the differential productivity growth in the manufacturing and the service sector. The importance of that shock is that it helps to explain the observed employment shift from non-services to the service sector. We argue that countries that had unfriendly institutions to service job creation were not able to have a smooth transition towards a service economy with the result of higher unemployment. Given the characteristics of the service employment, created in small firms at the local level, one institution that possibly hampered service employment is the administrative burdens on firm creation. Thus the second contribution of the paper is to include in the analysis, along with the usual suspects, the start-up costs of firms.

The estimations seem to support the working hypotheses of the paper: countries with higher start-up costs have significantly lower service employment and higher unemployment. This is so when no shocks are specified, and time dummies are included instead, and when the shocks are identified and include the differential productivity growth in manufacturing and services.

The first set of regressions use time dummies instead of fully specified shocks to be able to isolate the impact of the institutions from that of shocks on unemployment. The time dummies alone would be able to explain an increase in unemployment of 7 percentage points in a country with the cross-country average value of institutions. The country with the highest start-up costs among all OECD countries, Italy, would be penalized with an additional increase in unemployment of 1.07%. When the contribution of each institution to the pre-

dicted increase in unemployment is estimated for the case of Italy, start-up costs emerge as the largest contributor to the unemployment rise. On the other hand, employment protection legislation, one of the traditional main suspects, appears to have contributed in less than 1 percentage point to the overall increase.

Among the three macroeconomic shocks included in the analysis, shift in labour demand, increase in the interest rate and change in the manufacturing to service labour productivity, the only significant one is the latter. Again looking at the case of Italy, it has been estimated that the shift of employment to the service sector can explain alone 5 percentage points of the overall predicted increase in unemployment, which accounts for around 60% of the total. The other two shocks together can hardly explain one percent of the unemployment increase.

The analysis of the contribution of each institution, when interacted with the shocks, has to be taken with extreme caution given the restricted sample size. Still, start-up costs emerge again as the institution that has contributed the most to the predicted unemployment increase. In the case of Italy, that contribution is now twice as large as it was when no shocks were specified and time dummies were used instead.

In spite of the incomplete data on sector labour productivity, the analysis shows that the administrative burdens on firm creation and other product market regulations can be blamed for part of the increase in unemployment experienced by most western economies in the last three decades. That impact is specially important when the size of the employment shift from the agriculture and industry sector into the service sector is taken into account.

Spain, Italy or France are countries with unfriendly institutions when it comes to service job creation. Thus, policy intervention in this respect could potentially have an important impact on their labour market performance.

Further work is needed to improve the data-set, with better sector TFP data and time-varying information on start-up costs. One of the secondary results obtained from the analysis concerns the drop in significance of the employment protection legislation index whenever start-up costs are included in the regressions. That result is very robust and responds to the high correlation found between start-up costs and EPL. The traditional significance of the employment protection legislation in aggregate studies trying to explain the rise of

unemployment could then be just the reflection of the high correlation between start-up costs and EPL. Further research into this issue would be also very interesting.

| <i>Dependent variable: Unemployment rate</i> | | | | | | |
|--|------------|------------|------------|------------|------------|------------|
| | 1 | 2 | 3 | 4 | 5 | 6 |
| B. Duration | .69 (.24) | .87 (.19) | .85 (.20) | .87 (.19) | .77 (.24) | .62 (.27) |
| B.R.Rate | .55 (.45) | 1.2 (.47) | 2.3 (.49) | 1.4 (.51) | -.55 (.44) | .61 (.49) |
| EPL | .33 (.20) | -.15 (.25) | .13 (.24) | -.29 (.24) | .12 (.14) | .45 (.28) |
| U.Density | -.17 (.56) | 1.0 (.56) | .55 (.53) | 1.2 (.51) | .63 (.63) | -.26 (.61) |
| Tax Wedge | .08 (.65) | -1.4 (.57) | -1.4 (.61) | -1.7 (.57) | .69 (.70) | .35 (.73) |
| Coordination | -.20 (.13) | -.22 (.12) | -.20 (.12) | -.19 (.12) | -.14 (.13) | -.22 (.13) |
| Start-up costs | | .48 (.10) | .36 (.11) | | | |
| SUC*initial nsv | | | | .74 (.13) | | |
| Home Ownership | | | 3.4 (.78) | | | |
| Minimum Wage | | | | | .62 (1.31) | |
| Product Market Regul. | | | | | | -.29 (.29) |
| Observations | 106 | 106 | 100 | 106 | 94 | 106 |

Notes: Standard errors in brackets. Coefficients non-significant at 10% significance level are omitted. . When home ownership is introduced, Portugal drops. When minimum wages are introduced, Ireland and Spain drop.

Table 14: Unemployment Regression: Common shocks and time-varying institutions

5 Appendix

Tables 14, 15 and 16 show the results of the regressions with common unidentified shocks (time dummies) and time-varying institutions. Please keep in mind that we do not have time-varying data for start-up costs and minimum wages. The first column of the table includes only labour market institutions (there are no data for ALMP and union coverage); the second column adds to the six labour market institutions the start-up costs; the third column controls for regional mobility; the fourth column substitutes start-ups by the interaction of start-ups with the initial non-service employment rate; column five substitutes start-up costs by the wage floor; and finally, column six includes the overall OECD product market regulation index. All regressions include time and country dummies.

Table 17, 18 and 19 show the results of the regressions using the shocks identified by B&W, i.e. labour demand shift, long-term interest rate and aggregate TFP growth. The first column shows the results of the model only with labour market institutions; column two includes start-up costs; column three substitutes start-up costs by the wage floor; and finally, the fourth column includes

Dependent variable: Service employment ratio

| | 1 | 2 | 3 | 4 | 5 | 6 |
|-----------------------|------------|------------|------------|------------|------------|------------|
| B. Duration | -.00 (.15) | -.08 (.13) | -.02 (.15) | -.06 (.13) | -.07 (.14) | .03 (.16) |
| B.R.Rate | .77 (.29) | .43 (.38) | .06 (.32) | .38 (.39) | 1.0 (.19) | .69 (.32) |
| EPL | .02 (.11) | .27 (.17) | .27 (.17) | .32 (.16) | .02 (.12) | -.06 (.14) |
| U.Density | -.27 (.37) | -1.1 (.39) | -.81 (.46) | -1.2 (.42) | -.82 (.47) | -.20 (.38) |
| Tax Wedge | -.53 (.41) | .56 (.58) | .26 (.49) | .74 (.62) | -.48 (.54) | -.72 (.45) |
| Coordination | -.06 (.07) | -.02 (.07) | -.07 (.06) | -.03 (.07) | -.10 (.07) | -.06 (.07) |
| Start-up costs | | -.27 (.08) | -.22 (.08) | | | |
| SUC*initial nsv | | | | -.39 (.12) | | |
| Home Ownership | | | -1.1 (.46) | | | |
| Minimum Wage | | | | | 1.1 (.93) | |
| Product Market Regul. | | | | | | .19 (.20) |
| Observations | 106 | 106 | 100 | 106 | 94 | 106 |

Notes: Standard errors in brackets. Coefficients non-significant at 10% significance level are omitted. . When home ownership is introduced, Portugal drops. When minimum wages are introduced, Ireland and Spain drop.

Table 15: Service Regression: Common shocks and time-varying institutions

Dependent variable: Manufacturing employment ratio

| | 1 | 2 | 3 | 4 | 5 | 6 |
|-----------------------|------------|------------|------------|------------|------------|------------|
| B. Duration | .23 (.25) | .41 (.18) | .50 (.16) | .39 (.18) | .06 (.24) | .28 (.22) |
| B.R.Rate | -.48 (.48) | .19 (.39) | -.09 (.33) | .21 (.40) | -1.5 (.42) | -.57 (.41) |
| EPL | .05 (.22) | -.51 (.23) | -.06 (.16) | -.55 (.25) | -.46 (.23) | -.07 (.28) |
| U.Density | -.24 (.38) | .97 (.36) | .76 (.36) | .91 (.38) | -1.1 (.40) | -.16 (.39) |
| Tax Wedge | 1.5 (.73) | .08 (.63) | -.58 (.16) | .17 (.66) | 1.9 (.58) | 1.3 (.77) |
| Coordination | -.05 (.15) | -.05 (.13) | -.22 (.08) | -.02 (.14) | .09 (.14) | -.04 (.15) |
| Start-up costs | | .50 (.10) | .35 (.08) | | | |
| SUC*initial nsv | | | | .64 (.13) | | |
| Home Ownership | | | -1.7 (.47) | | | |
| Minimum Wage | | | | | 5.2 (.99) | |
| Product Market Regul. | | | | | | .26 (.27) |
| Observations | 106 | 106 | 100 | 106 | 94 | 106 |

Notes: Standard errors in brackets. Coefficients non-significant at 10% significance level are omitted. . When home ownership is introduced, Portugal drops. When minimum wages are introduced, Ireland and Spain drop.

Table 16: Manufacturing Regression: Common shocks and time-varying institutions

| <i>Dependent variable: Unemployment rate</i> | | | | |
|--|------------|------------|------------|------------|
| | 1 | 2 | 3 | 4 |
| Labour Demand Shift | .18 (.12) | .18 (.11) | .20 (.12) | .18 (.12) |
| LR interest rate | .43 (.12) | .43 (.12) | .43 (.11) | .43 (.12) |
| Annual TFP growth | .51 (.24) | .51 (.22) | .43 (.30) | .50 (.24) |
| B. Duration | .38 (.09) | .41 (.09) | .37 (.11) | .39 (.10) |
| B.R.Rate | .02 (.01) | .04 (.01) | .01 (.02) | .02 (.01) |
| EPL | .07 (.04) | .00 (.04) | .06 (.09) | .07 (.04) |
| U.Density | .04 (.02) | .05 (.02) | .04 (.03) | .04 (.02) |
| Tax Wedge | .06 (.02) | .03 (.02) | .04 (.02) | .05 (.02) |
| Coordination | .50 (.15) | .57 (.15) | .14 (.31) | .52 (.17) |
| U.Coverage | -.36 (.37) | -.22 (.37) | -.34 (.57) | -.34 (.38) |
| ALMP | .02 (.02) | .01 (.03) | .05 (.04) | .02 (.02) |
| Start-up costs | | .68 (.26) | | |
| Minimum Wage | | | -2.9 (2.4) | |
| Product Market Regulation | | | | .09 (.34) |
| Wald Test (3 shocks) | 103 | 109 | 47 | 83 |
| Observations | 113 | 113 | 80 | 113 |

Notes: Standard errors in brackets.
When minimum wages are introduced, Ireland and Spain drop.

Table 17: Unemployment Regressions: with aggregate TFP growth

the overall OECD product market regulation index.

All the three shocks are entered in levels and can be interpreted as deviations to the value in the first period of analysis, or as deviations to the country average. All shocks are imputed so their expected impact on unemployment is positive, which means that TFP growth has been multiplied by (-1).

Dependent variable: Service employment ratio

| | 1 | 2 | 3 | 4 |
|---------------------------|-------------|------------|------------|------------|
| Labour Demand Shift | .04 (.11) | .05 (.13) | .56 (.15) | .06 (.15) |
| LR interest rate | 1.1 (.16) | 1.1 (.18) | .74 (.15) | 1.1 (.18) |
| Annual TFP growth | .67 (.32) | .66 (.32) | .69 (.27) | .71 (.35) |
| B. Duration | -.12 (.06) | -.14 (.06) | .05 (.06) | -.14 (.06) |
| B.R.Rate | .00 (.01) | -.01 (.01) | .00 (.00) | .00 (.01) |
| EPL | -.05 (.03) | -.02 (.04) | -.02 (.03) | -.04 (.03) |
| U.Density | -.01 (.01) | -.02 (.01) | -.01 (.01) | -.01 (.01) |
| Tax Wedge | .01 (.01) | .02 (.02) | .01 (.01) | .01 (.02) |
| Coordination | -.09 (.13) | -.14 (.14) | -.13 (.18) | -.14 (.15) |
| U.Coverage | .10 (.31) | .02 (.30) | -.16 (.32) | .05 (.31) |
| ALMP | -.01 (-.02) | -.00 (.02) | .02 (.01) | -.01 (.02) |
| Start-up costs | | -.30 (.31) | | |
| Minimum Wage | | | .39 (2.3) | |
| Product Market Regulation | | | | -.23 (.49) |
| Wald Test (3 shocks) | 149 | 159 | 89 | 128 |
| Observations | 113 | 113 | 80 | 113 |

Notes: Standard errors in brackets.

When minimum wages are introduced, Ireland and Spain drop.

Table 18: Service Regression: with aggregate TFP growth

Dependent variable: Manufacturing employment ratio

| | 1 | 2 | 3 | 4 |
|---------------------------|------------|------------|------------|------------|
| Labour Demand Shift | .08 (.10) | .09 (.08) | -.14 (.12) | .07 (.12) |
| LR interest rate | -.61 (.09) | -.60 (.08) | -.60 (.10) | -.61 (.09) |
| Annual TFP growth | -.42 (.18) | -.42 (.17) | -.53 (.18) | -.43 (.19) |
| B. Duration | .19 (.08) | .22 (.08) | .28 (.08) | .18 (.10) |
| B.R.Rate | -.01 (.01) | .01 (.01) | .00 (.01) | -.01 (.01) |
| EPL | -.01 (.03) | -.07 (.04) | .01 (.04) | -.00 (.04) |
| U.Density | -.01 (.01) | -.00 (.01) | -.01 (.01) | -.01 (.01) |
| Tax Wedge | .02 (.01) | .00 (.02) | .03 (.01) | .02 (.01) |
| Coordination | -.03 (.13) | .10 (.14) | .09 (.14) | -.06 (.14) |
| U.Coverage | -.36 (.37) | .28 (.37) | .05 (.38) | .04 (.31) |
| ALMP | .08 (.35) | -.05 (.02) | -.00 (.02) | -.03 (.02) |
| Start-up costs | | .53 (.28) | | |
| Minimum Wage | | | .43 (1.8) | |
| Product Market Regulation | | | | -1.5 (.54) |
| Wald Test (3 shocks) | 83 | 137 | 55 | 137 |
| Observations | 110 | 110 | 80 | 110 |

Notes: Standard errors in brackets.

When minimum wages are introduced, Ireland and Spain drop.

Table 19: Manufacturing Regression: with aggregate TFP growth

References

- [1] Baumol, W. J. (1967): "Macroeconomics of Unbalanced Growth: The Anatomy of Urban Crisis", *The American Economic Review* 57(3): 415-426.
- [2] Baumol, W.J., Blackman, S.A. and E.N. Wolff (1985): "Unbalanced Growth Revisited: Asymptotic Stagnancy and New Evidence", *The American Economic Review* 75(4): 806-817.
- [3] Bean, C.R., Layard, P.R.G. and S.J. Nickell (1986) "The Rise of Unemployment: A Multi-Country Study", *Economica* 53(210), Supplement: Unemployment: S1-S22.
- [4] Bernard, A. B. and C. Jones (1996a): "Productivity across Industries and Countries: Time Series Theory and Evidence", *The Review of Economics and Statistics* 78(1): 135-146.
- [5] Bernard, A. B. and C. Jones (1996b): "Comparing Apples and Oranges: Productivity Convergence and Measurement across Industries and Countries", *American Economic Review* 86(5): 1216-1238.
- [6] Blanchard, O. (1999): *European Unemployment: The Role of Shocks and Institutions*, Baffi Lecture, Rome.
- [7] Blanchard, O. and J. Wolfers (2000): "The Role of Shocks and Institutions in the Rise of European Unemployment: The Aggregate Evidence", *The Economic Journal* 110: C1-C33.
- [8] Bruno, M. And J. Sachs (1985): *Economics of Worldwide Stagflation*, Cambridge, Massachusetts: Harvard University Press.
- [9] Djankov, S., La Porta, R. Lopez-Silanes, F and A. Schleifer (2000): "The Regulation of Entry", NBER Working Paper N. 7892.
- [10] Fuchs, V. (1968): *The Service Economy*, Columbia University Press, New York.

- [11] Kongsamut, P., Rebelo, S. and D. Xie (2001): "Beyond balanced growth", *Review of Economic Studies* 68: 869-882.
- [12] Krueger, A. and S. Pischke (1997): "Observations and Conjectures on the U.S. Employment Miracle", NBER Working Paper N. 6146.
- [13] Lazear, E. (1990): "Job Security Provisions and Employment", *Quarterly Journal of Economics* 105(3): 699-725.
- [14] Marimon, R. and F. Zilibotti (1998): "Actual versus Virtual Employment in Europe: Is Spain Different?", *European Economic Review* 42(1): 123-153.
- [15] Mckinsey Global Institute (1994): *Employment Performance*, Mckinsey & Inc. Washington D.C. November.
- [16] Milner, S., Metcalf, D. and G. Nombela (1995): "Employment Protection Legislation and Labour Market Outcomes in Spain", Centre for Economic Performance, London School of Economics, Discussion Paper N. 244.
- [17] Nickell, S. (1997): "Unemployment and Labor market Rigidities: Europe versus North America", *The Journal of Economic Perspectives* 11(3): 55-74.
- [18] Nickell, S. And L. Nunziata (2002): "Unemployment in the OECD since the 1960s. What Do We know?", Mimeo, Bank of England.
- [19] Nicoletti, G., Scarpetta, S. and O. Boylaud (2000): "Summary Indicators of Product Market Regulation with an Extension to Employment Protection Legislation", OECD Economics Department Working Papers N.226.
- [20] OECD (1993): *Employment Outlook*, Organisation for Economic Co-Operation and Development. Paris.
- [21] OECD (1994): *Jobs Study: Facts, Analysis and Strategies*, Organisation for Economic Co-Operation and Development. Paris.
- [22] OECD (1996): *Employment Outlook*, Organisation for Economic Co-Operation and Development. Paris.

- [23] OECD (1997): *Employment Outlook*, Organisation for Economic Co-Operation and Development. Paris.
- [24] OECD (1998): *Fostering Entrepreneurship*, Organisation for Economic Co-Operation and Development. Paris.
- [25] OECD (2000): *Employment Outlook*, Organisation for Economic Co-Operation and Development. Paris.
- [26] Phelps, E. (1994): *Structural Slumps. The Modern Equilibrium Theory of Unemployment, Interests and Assets*, Cambridge MA: Harvard University Press.
- [27] Scarpetta, S., P. Hemmings, Tressel, T. and J. Woo (2002): "The Role of Policy and Institutions for Productivity and Firm Dynamics: Evidence from Micro and Industry Data", OECD Economics Department Working Papers N. 329.
- [28] Reynolds, P.D., Camp, S.M., Bygrave, W.D. and E. Autio (2001): Global Entrepreneurship Monitor Executive Report. www.gemconsortium.org.
- [29] Siebert, H. (1997): "Labor Market Rigidities: At the Root of Unemployment in Europe", *The Journal of Economic Perspectives* 11(3): 37-54.

CESifo Working Paper Series

(for full list see www.cesifo.de)

- 785 Jan Erik Askildsen, Uwe Jirjahn, and Stephen C. Smith, Works Councils and Environmental Investment: Theory and Evidence from German Panel Data, October 2002
- 786 Geir H. Bjønnes, Dagfinn Rime, and Haakon O. Aa. Solheim, Volume and Volatility in the FX-Market: Does it matter who you are?, October 2002
- 787 John Evans and John Fingleton, Entry Regulation and the Influence of an Incumbent Special Interest Group, October 2002
- 788 Wolfgang Ochel, International Comparisons and Transfer of Labour Market Institutions, October 2002
- 789 B. Gabriela Mundaca, Moral Hazard Effects of Bailing out under Asymmetric Information, October 2002
- 790 Gene M. Grossman and Edwin L.-C. Lai, International Protection of Intellectual Property, October 2002
- 791 John Hassler, José V. Rodriguez Mora, Kjetil Storesletten, and Fabrizio Zilibotti, A Positive Theory of Geographic Mobility and Social Insurance, October 2002
- 792 Paul De Grauwe and Marianna Grimaldi, The Exchange Rate in a Model with Heterogeneous Agents and Transactions Costs, October 2002
- 793 Guido Friebel and Mariassunta Giannetti, Fighting for Talent: Risk-shifting, Corporate Volatility, and Organizational Change, October 2002
- 794 Jan Erik Askildsen, Badi H. Baltagi, and Tor Helge Holmås, Will Increased Wages Reduce Shortage of Nurses? A Panel Data Analysis of Nurses' Labour Supply, October 2002
- 795 Marko Köthenbürger and Panu Poutvaara, Social Security Reform and Intergenerational Trade: Is there Scope for a Pareto-Improvement?, October 2002
- 796 Paul De Grauwe and Laura Rinaldi, A Model of the Card Payment System and the Interchange Fee, October 2002
- 797 Volker Böhm and Tomoo Kikuchi, Dynamics of Endogenous Business Cycles and Exchange Rate Volatility, October 2002
- 798 Mariam Camarero, Javier Ordóñez, and Cecilio Tamarit, The Euro-Dollar Exchange Rate: Is it Fundamental?, October 2002

- 799 Misa Tanaka, How Do Bank Capital and Capital Adequacy Regulation Affect the Monetary Transmission Mechanism?, October 2002
- 800 Jörg Baten and Andrea Wagner, Autarchy, Market Disintegration, and Health: The Mortality and Nutritional Crisis in Nazi Germany, 1933-1937, October 2002
- 801 Saku Aura, Uncommitted Couples: Some Efficiency and Policy Implications of Marital Bargaining, October 2002
- 802 Wolfram F. Richter, Delaying Integration of Immigrant Labor for the Purpose of Taxation, October 2002
- 803 Gil S. Epstein and Shmuel Nitzan, The Politics of Randomness, October 2002
- 804 John Hassler and José V. Rodriguez Mora, Should UI Benefits Really Fall over Time?, October 2002
- 805 Friedrich Breyer and Stefan Felder, The Dead-anyway Effect Revis(it)ed, October 2002
- 806 Assar Lindbeck and Solveig Wikström, E-exchange and the Boundary between Households and Organizations, November 2002
- 807 Dieter Bös, Contests Among Bureaucrats, November 2002
- 808 Steven Brakman, Harry Garretsen, and Marc Schramm, The Strategic Bombing of German Cities during World War II and its Impact on City Growth, November 2002
- 809 Florian Englmaier and Achim Wambach, Contracts and Inequity Aversion, November 2002
- 810 Sarbajit Sengupta, Delegating Recruitment under Asymmetric Information, December 2002
- 811 Rajshri Jayaraman, On the Partial Public Provision of a Private Good, December 2002
- 812 Stéphanie Stolz, Banking Supervision in Integrated Financial Markets: Implications for the EU, December 2002
- 813 Christian Keuschnigg, Taxation of a Venture Capitalist with a Portfolio of Firms, December 2002
- 814 Inés Macho-Stadler and David Pérez-Castrillo, Settlement in Tax Evasion Prosecution, December 2002
- 815 Rainer Niemann and Dirk Simons, Costs, Benefits, and Tax-induced Distortions of Stock Option Plans, December 2002
- 816 Jan-Egbert Sturm and Barry Williams, Deregulation, Entry of Foreign Banks and Bank Efficiency in Australia, December 2002

- 817 V. Anton Muscatelli, Patrizio Tirelli, and Carmine Trecroci, Monetary and Fiscal Policy Interactions over the Cycle: Some Empirical Evidence, December 2002
- 818 Claude Hillinger, A General Theory of Price and Quantity Aggregation and Welfare Measurement, December 2002
- 819 Erkki Koskela and Ronnie Schöb, Optimal Capital Taxation in Economies with Unionised and Competitive Labour Markets, December 2002
- 820 Sheilagh Ogilvie, Guilds, Efficiency, and Social Capital: Evidence from German Proto-Industry, December 2002
- 821 Hans Gersbach and Verena Liessem, Financing Democracy, December 2002
- 822 Costas Hadjiyiannis, Panos Hatzipanayotou, and Michael S. Michael, Optimal Tax Policies with Private-Public Clean-Up, Cross-Border Pollution and Capital Mobility, December 2002
- 823 François Ortalo-Magné and Sven Rady, Homeownership: Low Household Mobility, Volatile Housing Prices, High Income Dispersion, December 2002
- 824 Syed M. Ahsan and Panagiotis Tsigaris, Measuring the Social Discount Rate under Uncertainty: A Methodology and Application, December 2002
- 825 Kai A. Konrad, Altruism and Envy in Contests: An Evolutionarily Stable Symbiosis, December 2002
- 826 Robert S. Chirinko and Huntley Schaller, A Revealed Preference Approach to Understanding Corporate Governance Problems: Evidence from Canada, December 2002
- 827 Geir B. Asheim, Green National Accounting for Welfare and Sustainability: A Taxonomy of Assumptions and Results, December 2002
- 828 Andrea Gebauer, Chang Woon Nam, and Rüdiger Parsche, Lessons of the 1999 Abolition of Intra-EU Duty Free Sales for Eastern European EU Candidates, December 2002
- 829 Giacomo Corneo, Work and Television, December 2002
- 830 Vivek H. Dehejia and Yiagadeesen Samy, Trade and Labour Standards – Theory, New Empirical Evidence, and Policy Implications, December 2002
- 831 Geir B. Asheim and Wolfgang Buchholz, A General Approach to Welfare Measurement through National Income Accounting, December 2002
- 832 Aaron Tornell and Frank Westermann, The Credit Channel in Middle Income Countries, January 2003
- 833 Gebhard Flaig, Time Series Properties of the German Monthly Production Index, January 2003

- 834 Campbell Leith and Jim Malley, Estimated Open Economy New Keynesian Phillips Curves for the G7, January 2003
- 835 Burkhard Heer and Bernd Süßmuth, Inflation and Wealth Distribution, January 2003
- 836 Erkki Koskela and Leopold von Thadden, Optimal Factor Taxation under Wage Bargaining – A Dynamic Perspective, January 2003
- 837 Carola Grün and Stephan Klasen, Growth, Income Distribution, and Well-Being: Comparisons across Space and Time, January 2003
- 838 Robert S. Chirinko and Ulf von Kalckreuth, On the German Monetary Transmission Mechanism: Interest Rate and Credit Channels for Investment Spending, January 2003
- 839 Sascha O. Becker, Andrea Ichino, and Giovanni Peri, How Large is the “Brain Drain” from Italy?”, January 2003
- 840 Albert Berry and John Serieux, All About the Giants: Probing the Influences on Growth and Income Inequality at the End of the 20th Century, January 2003
- 841 Robert Fenge and Martin Werding, Ageing and the Tax Implied in Public Pension Schemes: Simulations for Selected OECD Countries, January 2003
- 842 Robert Fenge and Martin Werding, Ageing and Fiscal Imbalances Across Generations: Concepts of Measurement, January 2003
- 843 Giovanni Andrea Cornia, The Impact of Liberalisation and Globalisation on Income Inequality in Developing and Transitional Economies, January 2003
- 844 Peter Fredriksson and Per Johansson, Program Evaluation and Random Program Starts, January 2003
- 845 Bernd Hayo and Matthias Wrede, Fiscal Equalisation: Principles and an Application to the European Union, January 2003
- 846 Syed M. Ahsan and Jaideep Oberoi, Inequality, Well-being and Institutions in Latin America and the Caribbean, January 2003
- 847 Chang Woon Nam and Doina Maria Radulescu, The Role of Tax Depreciation for Investment Decisions: A Comparison of European Transition Countries, January 2003
- 848 V. Bhaskar and Steinar Holden, Wage Differentiation via Subsidised General Training, January 2003
- 849 Paloma Lopez-Garcia, Labour Market Performance and Start-up Costs: OECD Evidence, January 2003