

Kátay, Gábor; Wolf, Zoltán

Working Paper

Investment behavior, user cost and monetary policy transmission: The case of Hungary

MNB Working Papers, No. 2004/12

Provided in Cooperation with:

Magyar Nemzeti Bank, The Central Bank of Hungary, Budapest

Suggested Citation: Kátay, Gábor; Wolf, Zoltán (2004) : Investment behavior, user cost and monetary policy transmission: The case of Hungary, MNB Working Papers, No. 2004/12, ISBN 9639383589, Magyar Nemzeti Bank, Budapest

This Version is available at:

<https://hdl.handle.net/10419/83574>

Standard-Nutzungsbedingungen:

Die Dokumente auf EconStor dürfen zu eigenen wissenschaftlichen Zwecken und zum Privatgebrauch gespeichert und kopiert werden.

Sie dürfen die Dokumente nicht für öffentliche oder kommerzielle Zwecke vervielfältigen, öffentlich ausstellen, öffentlich zugänglich machen, vertreiben oder anderweitig nutzen.

Sofern die Verfasser die Dokumente unter Open-Content-Lizenzen (insbesondere CC-Lizenzen) zur Verfügung gestellt haben sollten, gelten abweichend von diesen Nutzungsbedingungen die in der dort genannten Lizenz gewährten Nutzungsrechte.

Terms of use:

Documents in EconStor may be saved and copied for your personal and scholarly purposes.

You are not to copy documents for public or commercial purposes, to exhibit the documents publicly, to make them publicly available on the internet, or to distribute or otherwise use the documents in public.

If the documents have been made available under an Open Content Licence (especially Creative Commons Licences), you may exercise further usage rights as specified in the indicated licence.



MNB WORKING PAPER

2004/12

Gábor Kátay – Zoltán Wolf*

Investment Behavior, User Cost and Monetary Policy Transmission - the Case of Hungary

December, 2004

* The authors would like to acknowledge the critical and extensive comments from Gábor Kézdi of Central European University, and colleagues at the Economics Department of the Magyar Nemzeti Bank. All remaining errors and omissions are ours. The views expressed in the paper do not necessarily reflect those of the Magyar Nemzeti Bank.

Online ISSN: 1585 5600
ISSN 1419 5178
ISBN 9 639 383 58 9

Gábor Kátay: Economist, Economics Department
E-mail: katayg@mnb.hu
Zoltán Wolf: Senior Economist, Economics Department
E-mail: wolfz@mnb.hu

The purpose of publishing the Working Paper series is to stimulate comments and suggestions to the work prepared within the Magyar Nemzeti Bank. Citations should refer to a Magyar Nemzeti Bank Working Paper.

The views expressed are those of the authors and do not necessarily reflect the official view of the Bank.

Magyar Nemzeti Bank
H-1850 Budapest
Szabadság tér 8-9.
<http://www.mnb.hu>

Abstract

In this paper we investigate corporate investment behavior using a large panel of Hungarian firms between 1993 and 2002. The standard neoclassical framework is used to derive empirically feasible specifications, however, several other issues beyond the scope of the framework are also addressed.

We draw on the line of research carried out previously in the Eurosystem Monetary Transmission Network (EMTN). Our results are, by and large, similar to those obtained within the EMTN. Namely, the effect of user cost changes on investment is significant and robust across several specifications providing strong evidence against simple sales-accelerator models of investment. Firms' cash-flow proved to be a significant determinant of corporate investment, which suggests that financial variables do matter for firms.

JEL classification: C23, D21, D92, E22, E50

Keywords: investment, monetary transmission, user cost of capital, credit channel, panel data

Contents

1	Introduction	2
2	A brief overview of the investment literature	4
3	Business cycle and investment in Hungary– Stylized facts	8
3.1	Previous studies of investment and capital	8
3.2	Determinants of Hungarian investment	10
4	Theoretical framework	15
4.1	The neoclassical model of investment	15
4.2	Optimality conditions	17
4.3	Effects of monetary policy on investment	18
5	Empirical models	21
6	The data	28
6.1	Capital stock	31
6.2	User cost	33
7	Estimation and results	35
7.1	Estimation method	35
7.2	Econometric results	37
8	Conclusion	45
	References	47
	Appendix	51

1 Introduction

Understanding investment behavior has been an important topic on the economic agenda for some time. Empirical and theoretical models of business investment has been developing rapidly since the 1960's. The interest and need for understanding investment behavior emanated from various reasons. First, it is widely accepted that investment volatility is a prime contributor to aggregate output fluctuations. Also, anemic investment expenditures might signal various economic problems that might need solutions from economic policy makers. While having a clear picture of business investment characteristics is interesting on its own right, this paper seeks to empirically investigate corporate investment behavior in order to shed some light on how monetary impulses are transmitted to the Hungarian nonfinancial corporate sector, namely, to what extent and how business investment reacts to monetary policy decisions.

However, the implication of our approach is that it is *not* the existence of the traditional interest rate channel that is in focus of the paper. The traditional interest rate channel portrays the transmission of a money supply shock to investment and output (Mishkin (1996)). Rather, what we intend to gauge is to what extent changes in the user cost of capital – of which the interest rate is only a determinant – affect corporate investment behavior. It is of high relevance because being a small open economy, Hungary is widely viewed as a country where the main channel of transmission is the exchange rate and the role of mechanisms operating via the interest rate level is often downplayed.

Several previous studies have tried to capture the relationship between interest rates and investment but those using aggregate data have been rather unsuccessful in this respect. The ambiguity of results and the failure to detect significant linkages between variables can be attributed to a number of reasons. First, aggregation itself obscures effects that could otherwise be important at the firm level and, as a result, significant parameter estimates are rarely obtained on aggregate data. Second, the endogeneity of aggregate in-

vestment and the user cost of capital cause simple OLS parameter estimates to be inconsistent and good instruments are difficult to find at the aggregate level. Third, financial market imperfections are not taken into account explicitly in aggregate models of investment, yet their role is widely accepted in the literature.

Our approach is micro-founded both in the sense of model development and estimation. Applying a micro-approach provides at least partial solutions to the problems mentioned above. Heterogeneity across firms provides for large variance of the observations, which can be exploited in the identification and estimation procedures. Also, endogeneity can be tackled since good instruments are easier to obtain at the firm level. Financial market imperfections are also incorporated and its effects are estimated.

This investigation has been carried out as part of a broader project within the Magyar Nemzeti Bank aimed at mapping various transmission mechanisms of monetary policy. In the current stage, we followed the line of research carried out recently within the Eurosystem Monetary Transmission Network for two reasons. First, results are derived in a simple but rigorous framework. Second, they are comparable to outcomes of previous European studies. Despite its deficiencies, we consider the simple neoclassical model applied in the paper as a good starting point in understanding corporate investment behavior in Hungary.

The paper is organized as follows. The next Section bestows our analysis in the investment literature and addresses some shortcomings to the neoclassical framework. We also touch on certain other issues that cannot directly be tackled within the framework though proved to be important. In Section 3 stylized facts are presented along with previous studies of capital formation in Hungary. The theoretical model is discussed and the optimization problem of a representative firm is solved in Section 4. Estimable specifications are derived in Section 5. Characteristics of our data and the way we constructed key variables are presented in Section 6. Our estimation strategy and results are exhibited in Section 7 and Section 8 concludes. Further data details are provided in the Appendix.

2 A brief overview of the investment literature

The goal of this selective overview is to bestow our analysis in the field and present the problems and findings of previous studies that led to the extant empirical frameworks in applied investment studies. We start with discussing the key assumptions and findings of the neoclassical framework because prior to Jorgenson's model (Jorgenson (1963)), capital demand was simply considered as a response to fluctuations of sales or output¹ and no rigorous framework existed for understanding investment behavior. The second part of the section deals with several additional issues which could not be addressed within the neoclassical framework.

The explicitly dynamic decision problem of the firm was introduced by Jorgenson (1963). Jorgenson showed that investment was driven by a "shadow price" or implicit rent of one unit of capital service per period of time. He called this rent the *user cost of capital*. He derived the optimal capital stock under constant returns to scale and exogenously given output. To make the rate of investment determinate, the model was completed by a distributed lag function.

While there have been many different approaches within the neoclassical framework in understanding investment spending, several issues have repeatedly been encountered by researchers. We do not intend to present a complete list of questions related to the Jorgensonian model but concentrate on the main issues overviewing previous results.²

First, the assumption of continuous substitutability of the two input factors implies that the firm is able to adjust its capital stock, be it either investment or disinvestment. Thus, it can freely increase or decrease its capital stock until its marginal product is equal to its marginal cost. Rapid changes in the capital stock are not „punished” meaning that adjustment is

¹This approach refers to the sales accelerator investment demand models.

²A comprehensive survey of investment studies up to the beginning of the nineties can be found in, for example, Chirinko (1993).

2. A brief overview of the investment literature

costless in the model. As a consequence, the firm can achieve the optimal capital stock instantaneously and the decision problem becomes static.³ The absence of adjustment costs has been challenged many times ever since the introduction of convex adjustment costs in the firm's optimization problem by Gould (1968). However, taking adjustment costs into account does not invalidate the Jorgenson condition, it only increases the marginal cost of capital and introduces dynamics in the optimization problem.

Second, the inharmonious treatment of delivery lags of investment and the immediate adjustment of optimal capital was another source of criticisms of the neoclassical framework. Empirical models usually assume that optimal capital is achieved according to an ADL process. Hence, dynamic adjustment is introduced in the model, but the particular form of this adjustment process does not follow from any of the key assumptions. Also, if optimal capital adjustment is instantaneous, the investment path generated by a delivery lag distribution may not be optimal. Therefore, the interpretation of lagged parameter estimates is ambiguous: it is not clear to what extent they describe adjustment or the effects of past expectations on current investment.

Finally, the treatment of expectations resulted in further criticism of the neoclassical model. A vast amount of effort has been made to develop and estimate models which explicitly tackle the problem highlighted by Robert Lucas in his seminal article (see, for example, Lucas and Prescott (1971), Muth (1961) for early models). Nevertheless, its practical success and policy applicability have not been unambiguous. There are various arguments why the role of explicit models has had so little direct impact on current policy evaluations. First, as stated by Chirinko (1993), pp. 1900, in its original form the Lucas critique „was user unfriendly” and „cast in an unfamiliar technical language”. Also, explicit models performed rather poorly when confronted with data.

³This is why Hayashi (2000) has called the optimal policy as “entirely myopic”. In other words, since capital is a variable factor input, the optimal policy is only to maximize the current return every moment in time without regard to the future.

2. A brief overview of the investment literature

An alternative theory suggested by Tobin (1969) stated that the rate of investment is a function of the marginal q -value. Marginal q was defined as the ratio of market value of new additional investment goods to their replacement costs. If the firm can freely change its capital stock, adjustment takes place until the marginal q is equal to 1. In the estimated q -model, the effects of all lagged variables and the expectations of all relevant future variables are captured by q . Thus, the effects of delivery lags can be interpreted as the influence of lagged expectations of q on investment. While the neo-classical theory and the q theory had been considered as concurrent models for a considerable period of time, Hayashi (1982) demonstrated that, under certain assumptions, the two are equivalent. He also showed that if a firm is a price-taker and assuming constant returns to scale in both production and installation, then the (unobservable) marginal q is equal to the average q , which is the ratio of the market value of the firm to the replacement cost of its capital stock.

The investment literature of the last three decades has focused on two other important aspects of investment decisions. The first issue concerns the question as to what extent investment decisions are reversible. The second is related to the timing aspects of investment decisions, namely, how the realistic possibility of postponing current investment affects traditional investment decision rules. These issues could not be addressed within the neoclassical framework and gave rise to the "orthodox theory of investment", also called as "real option approach to investment".

Costs of capital adjustment are augmented when capital can be sold only at a price considerably lower than its purchase price or cannot be sold at all. This phenomenon is referred to as the irreversibility of investment. Pindyck (1991) sets out two main arguments. First, capital is firm or at least industry specific in most cases and it is not likely that there is a liquid secondary market at hand. Apart from limited demand, the resale price of capital is also negatively affected by the fact that the potential buyer is not likely to use the acquired asset in the same market conditions. If the firm wants to sell its capital goods, the buyer is likely to face the same market conditions

2. A brief overview of the investment literature

in output markets and hence, it might not be worth to buy the asset at all. The difference between the resale price and the purchase price of capital can also be significantly negative if capital is not firm or industry specific. This difference is generated by asymmetric information between the seller and the buyer and is referred to as "lemon price"-effect after Akerlof (1970).⁴ Because of all these, investment costs are sunk for the firm and do matter in the optimization problem.

The above problems associated with the irreversibility of investment rise only in the presence of uncertainty. In the standard neoclassical framework it is assumed that firms are able to accurately estimate future output prices, investment prices, costs and interest rates.⁵ In an uncertain environment, the possibility to postpone investment becomes valuable. The additional value is generated by the possibility to wait for new information to arrive. Postponing investment and waiting provides the firm with a call option of which the price it takes into account when deciding about investment. If the firm invests today, it loses the option of investing tomorrow and the opportunity cost of investing today increases the cost of investment. Pindyck (1991) pointed out that irreversibility, uncertainty and the possibility to wait together call for an amendment of the "naive net present value rule". That is, in optimum, the marginal product of capital has to be greater than its marginal cost. Uncertainty increases the value of waiting (call option) and decreases the propensity to invest now. Hence, stability and predictability might be as – or even more – important investment incentives as taxes or interest rates.

⁴A difference between the purchase and resale price of capital goods might arise even if these problems are not serious in factor markets. If the transaction costs of selling capital goods are significant or comparable to the purchase price, it might not be worth selling capital goods at all.

⁵Uncertainty in a broader sense does appear in some early neoclassical models. Yet, uncertainty is associated with the explicit modeling of expectations in these or, to be more accurate, with the inability to properly model these expectations. In the context of our overview, we refer to the uncertainty emerging from the probabilistic nature of future outcomes of variables which are relevant for the optimizing firm. It is also important in this context that this is closely associated with the irreversibility of the investment.

Abel et al. (1996) relaxes the total irreversibility assumption. In their simple model the firm can resell its capital later but at a price that is not known at time of the resale decision (expandability). This provides for another possibility called the put option. The option to sell later, which is associated with the partial irreversibility case, increases the propensity to invest today. In the end, the optimal decision to invest is determined by these two options.

Adjustment costs, uncertainty, irreversibility and expandability are not explicit in our model. One might argue that this makes our analysis very simplified and unrealistic but the neoclassical framework is a clear and rigorous starting point in understanding corporate investment behavior. Also, it is relatively easy to derive empirically testable hypotheses in this framework. Moreover, the recent research in the European Monetary Transmission Network used similar framework so comparing our conclusions to previous results is straightforward.

3 Business cycle and investment in Hungary— Stylized facts

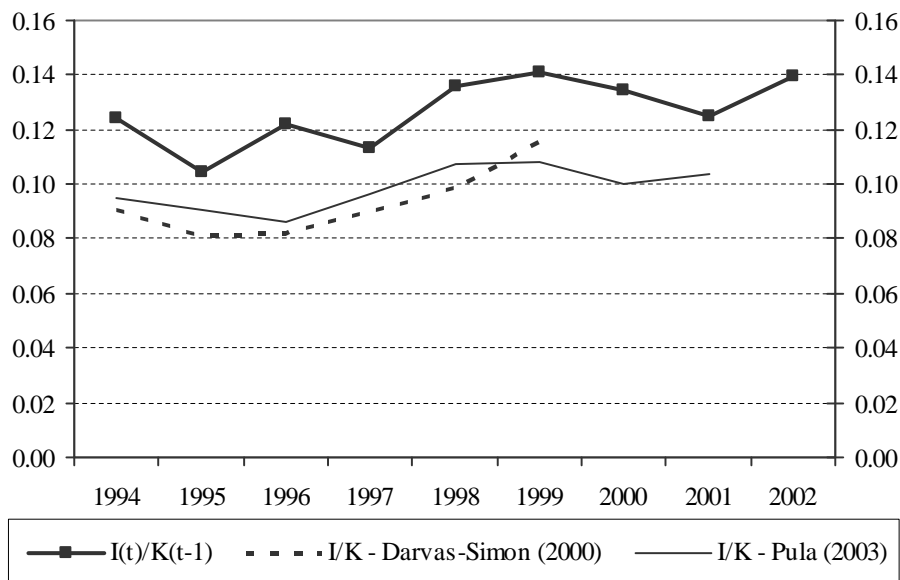
3.1 Previous studies of investment and capital

To our knowledge, two former investigations carried out capital stock estimation on Hungarian data. Both studies of capital formation produced similar conclusions both in qualitative and quantitative terms (Figure 1). Pula (2003) estimated aggregate investment (corporate plus public) series using Central Statistics Office (CSO) survey data. He used CSO data only on investments put into operation⁶ in his calculations. Our calculation approach is similar to that of Pula (2003) in the sense that we derive investment

⁶In CSO terminology, investments put into operation are investments brought into proper use, as well as their part independently put into use.

using changes in balance sheet capital data, that is, we accounted for only activated investment.

Figure 1: Investment rate series of previous studies



However, there are two differences that may account for the gap between our series and that of Pula (2003). First, his dataset consisted of firms employing more than 5 persons on average while our dataset is somewhat broader as will be seen in the dataset description. Second, CSO surveys fixed capital formation which covers the purchase and production of new tangible assets. On the contrary, we used balance sheet data on intangibles as well. These differences might explain why our investment rate is higher. Yet, despite differences, the two imply similar conclusions regarding both the level and the dynamics of investment.

The other study by Darvas and Simon (2000) produced aggregate investment broadly similar to that of Pula. However, they used investment⁷ data

⁷Investment comprises new acquisition, establishment, production of new tangible assets, the expansion, change of the function, conversion, reconstruction of existing tangible assets, the substitution of which were used up, with the exclusion of cultivation, mainte-

instead of investments put into operation. Further discussion of previous results can be found in Pula (2003).

3.2 Determinants of Hungarian investment

As regards macroeconomic conditions, the first few years of the 1990's was characterized with volatile inflation, real interest rates and an appreciating real exchange rate. The macroeconomic environment was rather unstable. This instability emanated largely from the structural changes which were induced by the transition process. To avoid loss of competitiveness stemming from adjustments in market prices, policy makers recurrently decided to realign the nominal exchange rate, which, in turn fuelled inflation expectations. Without these exchange rate adjustments, however, the huge current account deficit inherited from the 1980's would have caused the already heavy debt burden to increase further. Also, economic policy faced pressing reforms on the fiscal side. Against this backdrop came the comprehensive economic reform package in 1995, which eliminated economic imbalances and promoted macroeconomic consolidation afterwards. As an immediate result of the measures, both the budget and the current account deficit halved, which obviously was a favorable consequence. However, economic growth and investment dampened at the same time.

In light of these events it is not surprising that investment activity was more intense in the second half of the period under investigation. The onset of the 1990's was the very time of the transition to market economy when firms were driven to remarkably reevaluate their capital stock as existing capital goods inherited from the planned economy had become obsolete.

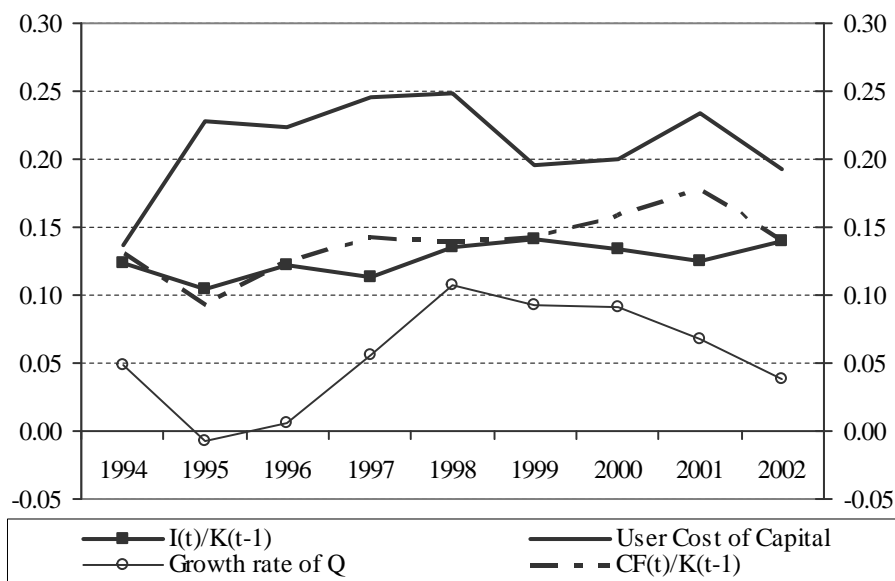
This is reflected in the fact that the investment rate peaked after the middle 1990's. In these years (1997-1998), foreign direct investment culminated, pumping heavy inflows of fresh capital to the Hungarian corporate sector and fuelling buoyant investment activity.

nance and renewal of the natural forests. The continuous maintenance and repair of the tangible are not part of investment.

3. Business cycle and investment in Hungary– Stylized facts

From 1999 onwards, the slightly decreasing but still stable investment rate suggests companies might begin to foresee their deteriorating profit opportunities with the nearing recession and they gradually began to refrain from actively investing in new capital goods and, accordingly, rather accumulated cash-flow. This can be seen from the increasing cash-flow-to-capital ratio. However, the increase in the investment rate in 2002 supports the view that – although some slack in economic activity could still be felt that year – Hungarian firms engaged in heavy investment at the end of 2002. These developments in the business cycle can be also tracked down looking at the growth rate of output: the decrease in average output in 1995 was followed by rapid recovery in the next three years; then, after another two years of high growth (1998-1999), output grew at a lower pace in 2001-2002.

Figure 2: Investment, User Cost, Cash Flow and Growth of Sales*



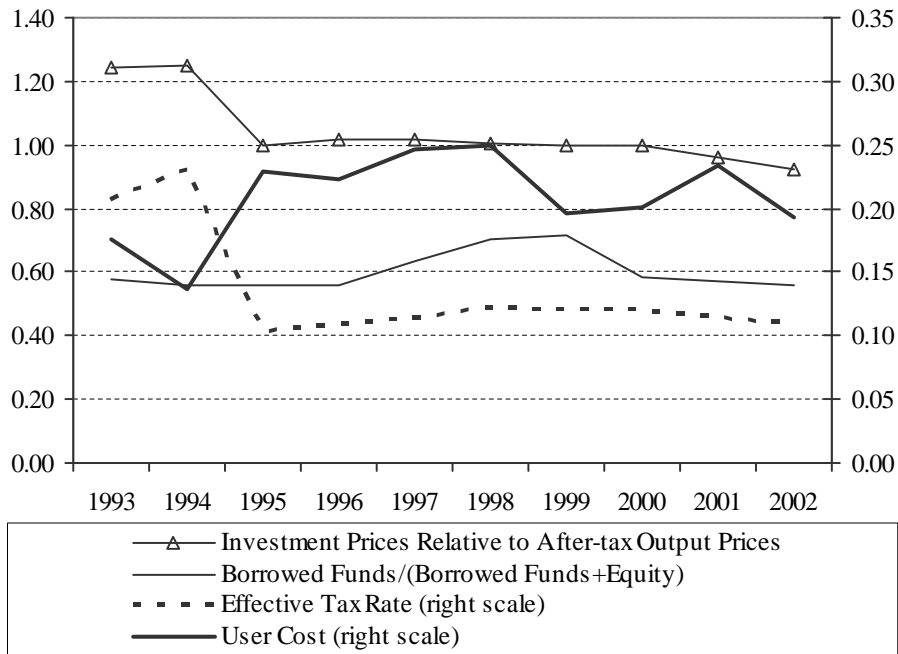
**To replicate macro data, we used $K(t-1)$ as weights to calculate averages of $I(t)/K(t-1)$ and $CF(t)/K(t-1)$. For the growth rate of Q , weights are $Q(t-1)$ values. Since it is not evident what variable one should use calculating a weighted average of the user cost, we present hereafter the unweighted averages of the user cost of capital and its components.*

As we will see in Section 4, theoretical results enforce the intuition that user cost developments are primary determinants of investment behavior.

3. Business cycle and investment in Hungary– Stylized facts

Therefore, we found it instructive to analyze how each of its components evolved in our sample period. Several findings emerge when breaking down the user cost of capital. First, the average cost of capital exhibited moderate volatility throughout the period. In 1993-94, it fell slightly below 15%. However, already in the first year of the macroeconomic stabilization (1995), when fiscal reforms and a new monetary regime⁸ were introduced, the user cost increased to over 20% and went down under 20% only at the end of the nineties and in 2002. Driving forces behind these movements are analyzed below (see Figure 3 and Figure 4).

Figure 3: Average User Cost of Capital and its after-tax components I

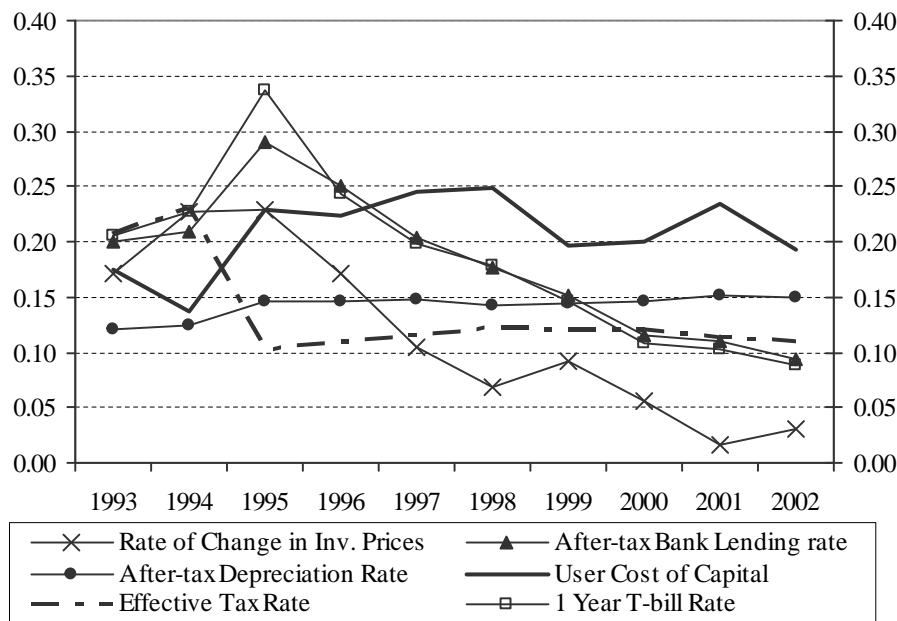


The most obvious effect on the cost of capital was put out by changes in the interest rate level.⁹ 1994 saw a rise in the interest rate level but this rise was not reflected in the cost of capital because other factors, e.g.

⁸Crawling peg exchange rate regime with a one-off initial devaluation of the national currency (9%).

⁹Interest rates are generally deemed as the opportunity cost of investing in physical capital goods.

Figure 4: Average User Cost of Capital and its after-tax components II



investment price movements, counterbalanced the elevating effect of interest rates. However, interest rate effects were prevalent in 1995 when a sharp rise in the interest rate level increased the cost of capital. From 1996 on, the continuously declining interest rates permanently pushed the user cost of capital downwards. The only exception was 2001 when rates remained stable.

Another important factor determining the costs of capital holders is investment price inflation. Investment prices affect capital owners via two terms. The first is the rate of change in investment prices, the other is the investment price level relative to the output price level. As investment prices increase, capital owners realize these price gains. As prices decrease, they suffer a loss on their assets. Investment price inflation showed a rather smooth path during the period under investigation. Investment price growth accelerated in the first two years of our sample period and have been decreasing ever since with the exception of 1999. The continuous decline might be explained by the general downward inflation trend in the economy. The deceleration in

investment price inflation had an elevating effect on the cost of capital, that is, the slower upward investment price movements from the middle 1990's ever reduced the price-gains capital goods holders realized throughout the period. In 1999, however, a temporary price hike took place reinforcing the downward pressure falling interest rates already put on the user cost. These two effects seem to have been strong enough to be apparent in the diminishing average cost of capital in 1999.

The price of investment relative to output also plays a role. It shows how dear investment goods are compared to final goods. This relative price term exhibited a slowly abating pattern in the period under review except that it fell sharply in 1995. This slightly downward trend exerted a diminishing effect on the user cost throughout the whole period.

Changes in corporate tax rates also play a role in user cost developments. Tax changes may influence the user cost via various mechanisms. First, a tax cut increases the after-tax output price, which in turn makes investment cheaper relative to the (after-tax) value of output. This implies that a tax cut in itself makes investment more attractive. Second, a tax cut reduces the tax savings on paid interest leading to higher after-tax interest rates and, therefore, higher opportunity cost of investment. Third, as depreciation is also tax-deductible, a cut in corporate taxes reduces tax advantages of the depreciation write-off bringing about a higher after-tax depreciation rate. Since losses in the value of capital assets is borne by capital owners, a rise in the depreciation rate directly augments the cost of capital. Hungarian corporate tax rates were cut two times in the 1990's. The first, four percentage point, cut took place 1994 (40% to 36%). This change was not reflected in the average effective tax rate because of the effects of various tax credits and because the rate of companies unaffected by the tax cut – that is, enjoying total tax exemption – was quite high throughout the decade (more than 30%). However, the more drastic shift in 1995 halving the rate to 18% had a measurable effect. The effective tax rate remained stable in the rest of the decade.

4 Theoretical framework

4.1 The neoclassical model of investment

The decision problem we exhibit is fairly standard in the literature¹⁰. The representative firm chooses capital, labor, and financing structure over an infinite horizon. We assume a CES production function where the two inputs, capital and labor can be continuously substituted. A general form of this technology can be written as

$$Q_{it} = F(K_{it}, L_{it}) = A_{it} \left[\alpha K_{it}^{\frac{\sigma-1}{\sigma}} + (1-\alpha) L_{it}^{\frac{\sigma-1}{\sigma}} \right]^{\frac{\sigma}{\sigma-1}v} \quad (1)$$

where Q_{it} is output (value added), K_{it} is capital stock, L_{it} is employment, A_{it} is the Solow residual, α and $(1-\alpha)$ are shares of the two inputs, σ is the elasticity of substitution between capital and labor, v is the degree of homogeneity or the volumen elasticity. In the case of homogenous technology this latter parameter is equal to unity but we do not restrict v to be unity. The production function is twicely continuously differentiable with

$$F_K(t) > 0, F_L(t) > 0, F_{KK}(t) < 0 \text{ and } F_{LL}(t) < 0$$

That is, the function is strictly monotonous in both capital and labor with decreasing returns to scale in both factors.

Firm i chooses the two inputs and financing structure in time t so as to maximize the present value of future profits:

$$\max W_{it} = \int_{t=0}^{\infty} e^{(\int_{p=0}^t r_p dp)} \pi_{it} dt \quad (2)$$

¹⁰Apparently, there are differences across studies in terms of the objective function and the budget constraint. The two most standard objective functions are the market value of the firm, that is, the value of shares and the firm's profit function. They are essentially lead to the same results as profit determines the value of the firm. Certain studies specify these functions in continuous-time, while others exhibit discrete-time versions of the problem. There are also differences as to what components enter the profit function. Some studies incorporate the effects of dividends or investment tax credit, some others do not. Nevertheless, these studies model investment on a very similar theoretical basis.

4. Theoretical framework

where W_{it} is the market value of the firm, B_{it} is the value of external funds, r_t is the market interest rate or discount rate and π_{it} is profits. The problem has two limiting constraints.

The first constraint is the budget constraint of the firm stating that expenses can exceed revenues by the amount of borrowed funds:

$$\pi_{it} = (1 - u_{it}) [p_{st}F(K_{it}, L_{it}) - w_{it}L_{it} - i_{it}B_{it}] + u_{it}\delta_{it}p_{st}^I K_{it} + \dot{B}_{it} - p_{st}^I I_{it} \quad (3)$$

where u_{it} is the effective tax rate, p_{st} is the price of output, w_{it} is the price of unit of labor (i.e. wage cost), i_{it} is the interest paid on outstanding bank credits, p_{st}^I is the industry specific investment price index, δ_{it} is the rate of depreciation and I_{it} is the investment volumen. As it can be seen from the above formula, depreciation and paid interest is tax deductible in the model.

We note here that the interest rate is assumed to be positively correlated to the amount of funds borrowed. This is because higher amount of funds borrowed increases the risk of default and banks expect higher compensation for this increased risk in the form of higher interest rates. However, it is negatively correlated to the amount of capital since a firm with relatively high proportion of valuable assets is less likely to be non performing on its liabilities. In what follows, we assume that the spread charged by banks (risk premium) for the increased default risk is simply a function of the firms' leverage:

$$i_{it} = i_{it} \left(\frac{B_{it}}{p_{st}^I K_{it}} \right), \text{ where } i'_{it} > 0. \quad (4)$$

For the optimal debt/capital ratio to be unique, a sufficient condition is $2i'_{it} + \frac{B_{it}}{p_{st}^I K_{it}} i''_{it} > 0$.

The second constraint is the capital accumulation equation¹¹:

$$\dot{K}_{it} = I_{it} - \delta_{it}K_{it} \quad (5)$$

¹¹We assume that the accounting rate of depreciation is equal to the economic rate of depreciation.

We note here that assumptions about the rate of depreciation have important consequences with respect to the final specifications of the model. In the literature it is common to assume that the rate of depreciation is constant over time and across firms. However, many critiques called this hypothesis into question (e.g. Chirinko (1993)). The constant depreciation hypothesis is likely to be erroneous also in the case of Hungary. The modernization of the production technologies and the incursion of ICT in the production made existing capital assets less and less valuable and implied continuously increasing depreciation rate during the catching up process. These considerations call for a depreciation rate which varies over time. By the same token, it can be argued that it is unlikely that capital assets in different industries are subject to the same rate of depreciation. It is more reasonable to assume that this rate is heterogenous across industries or firms. Drawing on these, we assume that the rate of depreciation is both time and firm specific as shown in equations (3) and (5).¹²

4.2 Optimality conditions

Substituting eq. (3) and eq. (5) into eq. (2) and differentiating with respect to the decision variables we arrive at the first order necessary conditions (FONC). The FONC for the external funds gives the following equation:

$$r_t - (1 - u_{it}) i_{it} = (1 - u_{it}) \frac{B_{it}}{p_{si}^I K_{it}} i'_{it} \quad (6)$$

This condition states that the optimal leverage is a result of counterweighting tax advantages of taking on more credit against the increasing interest burden caused by higher leverage. Since the right hand side of the equation is *per definitionem* positive, the after tax effective interest rate is smaller than the discount rate in optimum. As we will see later, the cost of capital is determined by the weighted average of these two latter interest rates. Hence, the access to bank credit and the related tax advantages

¹²Nevertheless, our derivations are invariant to this assumption. It only plays a role when deriving empirically estimable equations.

(tax-deductibility of interest paid) reduce the effective cost of investment and thereby increase the demand for capital. The FONC for the capital stock gives

$$(1 - u_{it}) p_{st} F_K(K_{it}, L_{it}) = p_{st}^I r_t + p_{st}^I \delta_{it} (1 - u_{it}) - \dot{p}_{st}^I + (1 - u_{it}) \frac{\partial i_{it}}{\partial K_{it}} B_{it} \quad (7)$$

After rearranging and plugging eq. (6) into eq. (7), the *Jorgenson condition* is obtained, which states that, in optimum, the marginal product of capital is equal to its marginal cost, that is, the user cost:

$$F_K(K_{it}, L_{it}) = UC_{it} \quad (8)$$

where

$$UC_{it} = \frac{p_{st}^I}{p_{st} (1 - u_{it})} \left[\left(1 - \frac{B_{it}}{p_{st}^I K_{it}} \right) r_t + \left(\frac{B_{it}}{p_{st}^I K_{it}} \right) (1 - u_{it}) i_{it} - \frac{\dot{p}_{st}^I}{p_{st}^I} + (1 - u_{it}) \delta_{it} \right] \quad (9)$$

If we abstract from borrowing possibilities and taxes ($B_{it} = 0, u_{it} = 0$), the formula for the user cost becomes the one published by Hall and Jorgenson (1967). Taking borrowing possibilities and tax aspects of the optimization into account, one arrives at the definition of Hayashi (2000).

4.3 Effects of monetary policy on investment

In this model, economic policy exerts its influence on corporate investment behavior via the user cost of capital. Tax policies are captured by the firm specific effective tax rate, which directly influences the cost of capital. Monetary policy, however, does not have a direct effect on the user cost. To highlight the role of monetary policy in this model, we can think of the mechanism as a three step process. In this process, each step is embodied by a partial elasticity parameter. We have to stress here that this decomposition is valid only if we stipulate in each step the „all-else-equal” condition. That

is, if we consider the *ceteris paribus* effects of changes in variables. Minding this, we can write the decomposition as

$$\varepsilon_m^K = \varepsilon_{UC}^K \times \varepsilon_r^{UC} \times \varepsilon_m^r$$

where ε_m^K is the elasticity of the capital stock with respect to the monetary policy interest rate. This is what concerns monetary policy makers at the end of the day. ε_{UC}^K is the elasticity of the capital stock with respect to the user cost of capital, ε_r^{UC} is the elasticity of the user cost with respect to the market interest rate and ε_m^r is the elasticity of the market interest rate with respect to the policy interest rate.

The mechanism via which monetary policy affects the capital stock is then straightforward. First, a change in the policy rate causes market rates to change, which in turn feeds into the user cost of capital. However, a few considerations are in order here.

First, it is not short but long term rates that determine the cost of capital since investment-related credits are typically of long maturity. Hence, long interest rates are taken into account in the user cost of capital. Second, it is not necessarily true that short term policy rate changes are spread across all market interest rates and maturities. According to the expectation hypothesis of the yield curve, long term interest rates are averages of expected values of future short term rates. If monetary policy and economic policy in general is credible then short rate changes are not necessarily reflected in long term interest rates. A preemptive monetary tightening intended to prevent the economy from overheating might leave long rates unchanged just because it makes future tightening unnecessary. This is reflected in unchanged expectations of future interest rates and, as a consequence, investment might not react to a tightening just because the relevant interest rates have not changed. In this setup, one would wrongly conclude that monetary policy cannot curb investment activity. Third, if firms finance investment directly from capital markets via, e.g., bond issuance, then monetary impulses might be transmitted to market interest rates more efficiently compared to a situation when the primary source of financing investment is provided by banks.

In the latter case, if banks are not competing heavily to finance firms, they are less motivated to reduce the price of credit in the case of a loosening. This is the case also, when the key determinant of credit supply is not the central bank.¹³

In the next step, long term interest rates influence the user cost of capital. Since interest rates are part of the user cost, the *direct effect* of interest rates on the user cost can be derived analytically from the user cost definition. We emphasize that this effect corresponds to the elasticity ε_r^{UC} presented above if and only if changes in interest rates do not affect other variables in the user cost definition. Assuming that banks adjust permanently their lending interest rates by the same percentage as market rates change, the direct effect on firm's user cost of one percent change in long term interest rate (ε_r^{UC}) is nothing else than the weight of interest rates in the user cost definition, that is:

$$\varepsilon_r^{UC} = \frac{\frac{p^I}{p(1-u)} \left[\left(1 - \frac{B}{p^I K}\right) r + \left(\frac{B}{p^I K}\right) (1-u) i \right]}{UC} \quad (10)$$

This is how the total effect of changes in interest rates on the user cost is generally simplified in the empirical investment literature (see for example Chatelain et al. (2001) or Butzen et al. (2001)). However, the elasticity of user cost w.r.t. market rates depends on other components of the user cost as well. These are not present in the numerator above. Namely, it is the sign and the magnitude of $\frac{p^I}{(1-u)p} \left[(1-u) \delta - \frac{\dot{p}^I}{p^I} \right]$ that matters. This suggest that, holding all other variables constant, higher expected investment price inflation implies higher user cost response to market rate change. Hence, if expected investment price inflation exceeds the after-tax depreciation rate, the fraction at stake is on average higher than 1, which should be the case in most countries with high inflation.

The user cost elasticity w.r.t. market rates can be simplified to the expression (10) only if other variables in the user cost definition are kept unchanged. While this assumption is reasonable in the short run, it is certainly fictitious

¹³One may think of, for example, to capital inflow from foreign investors here

and unrealistic in the long run. First of all, changes in interest rates may change the relative costs of financing new acquisitions by debt or equity. According to eq. (4), the firm's leverage is a function of the difference between the market interest rate and the after tax interest rate. If this latter expression changes, the firm might readjust its debt/equity ratio in the long run so as to regain to optimum. Thus, market rates affect firms' leverage, which in turn affect apparent borrowing rates and hence firms' user cost. The elasticity of user cost with respect to the market rate is thus lower than it would be without the possibility of choosing the financing structure of new investment. In other words, the ability to adjust its leverage gives the firm the ability to attenuate interest rate shocks. Secondly, interest rate changes may influence investment price inflation and also the relative price of investment to output prices. These effects are much more difficult to quantify and are far beyond the focus of this paper.

In the last step, firms facing different user cost outcomes react and adjust their capital stock accordingly. The aim of the empirical models presented below is to gauge this phase. Estimating ε_{UC}^K answers the question how responsive is the stock of capital to changes in the user cost of capital.

The specifications presented hereafter can be used to capture effects of financial market imperfections, which give rise to an additional monetary transmission channel. Before presenting what these effects stem from and how they are measured, we describe how we derived empirically feasible equations from theoretical ones.

5 Empirical models

With the optimality conditions at hand, one needs empirically feasible equations. One way to obtain estimable specifications is to substitute the partial derivative of the CES function in eq. (1) with respect to capital into eq. (8) and take logs (small letters represent logs). After rearranging, the following

long-run demand for capital is obtained:

$$k_{it} = \left(\sigma + \frac{1 - \sigma}{v} \right) q_{it} - \sigma uc_{it} + \sigma \log(v\alpha) + \frac{\sigma - 1}{v} \log(A_{it}) + \varepsilon_{it} \quad (11)$$

To be able to perform econometric tests on our model we assumed that the Solow residual can be decomposed into a firm specific and a time specific term: $A_{it} = A_i^{\kappa_1} A_t^{\kappa_2}$. In the case of equation (11) this decomposition means that the last two terms of the right hand side ($\sigma \log(v\alpha) + \log(A_{it})(\sigma - 1)/v$) can be broken down to an idiosyncratic fixed effect (η_i) and a time specific effect (η_t).

Obviously, the long-run optimum stock of capital (k_{it}) is unobservable, hence we have to characterize the adjustment process of capital. We assume, following others (e.g. Angeloni et al. (2002), Chatelain and Tiomo (2001), Valderrama (2001)), that capital adjustment can be described using its own previous values and the lags of the user cost and the output. The autoregressive distributed lag equation derived in this manner serves as the basis of our econometric analysis in which (p, q) are the parameters of the ADL specification:

$$k_{it} = \sum_{p=1}^p \omega_p k_{i,t-p} + \sum_{q=1}^q \phi_q q_{i,t-q} + \sum_{q=1}^q \sigma_q uc_{i,t-q} + \eta_i + \eta_t + \varepsilon_{it} \quad (12)$$

Using this equation, one can derive the long run parameters of the user cost and output¹⁴:

$$\sigma_{LT} = \frac{\sum_{q=1}^q \sigma_q}{1 - \sum_{p=1}^p \omega_p} \text{ and } \phi_{LT} = \frac{\sum_{q=1}^q \phi_q}{1 - \sum_{p=1}^p \omega_p} \quad (13)$$

Introducing long run parameters disentangles the apparent inconsistency between the optimal capital demand and ADL specifications. Neoclassical theory assumed instantaneous adjustment of the optimal capital stock. This obviously contradicts to specifying an ADL adjustment process in empirical equations. Assuming that capital adjustment can be characterized by its own previous values and lags of other variables points to the presumption that frictions in factor markets are at work. While immediate capital adjustment is clearly an unrealistic assumption, supposing frictionless markets over the long run, or rather, assuming firms are able to adjust their capital to the new optimum level after several years, may be more plausible. This implies, in turn, that long run parameter estimates can be paralleled with long run frictionlessness in factor markets because these parameters embody effects after adjustment in volumes and prices have taken place. Hence, long run parameter estimates can be closely related to those of the capital demand equation (11).

In this framework, an additional channel of monetary policy transmission can be captured. This channel is generated by financial market frictions and is called the credit channel in the investment literature (see e.g. Mishkin (1996)).

¹⁴We note here that eq. (12) is a reduced form of some underlying model of the capital stock. Hence, in this specification partial elasticities and, also, long-run parameters embody the effects of both expectations and technology parameters that are not explicitly specified in the model. Therefore, one should exercise caution when interpreting parameter estimates as pure adjustment characteristics. Despite the problem has long been known, it is not yet a wide-spread practice in applied investment research to tackle these issues explicitly (see, for example, Abel and Blanchard (1986), Chirinko (1993) or Angeloni et al. (2002)). Since we intend to produce parameter estimates that are derived in a comparable framework in order to evaluate our results with respect to previous European studies of investment, we did not address these issues in this paper. We refer the interested reader to the Lucas critique mentioned in the model overview and the survey of Chirinko (1993).

Studies of the credit channel and, as part of it, the balance sheet channel, are based on the observation that the classic hypothesis of Modigliani and Miller is not valid. That is, external and internal sources of funds are not perfect substitutes for the firm. In this view a wedge arises between the cost of these funds in capital markets because of market imperfections such as asymmetric information, agency problems, moral hazard and adverse selection. These imperfections bring about a transmission channel which traditional models could not capture. At the centre of these arguments is the statement that a firm with a smaller net worth is more exposed to the effects of adverse selection and moral hazard and the supply of external funds is inelastic. This is because the only information available for creditors to judge whether a firm is a timely and reliably solvent borrower is its net worth. A firm with a smaller net worth is less able to cover its liabilities in the event of a default and, as a consequence, creditors are less willing to provide financing. Thus, asymmetric information in financial markets make certain firms financially constrained. The moral hazard aspect of asymmetric information, in turn, is highlighted by the owners willingness to take on risks. When their share in the firm is smaller the potential loss they face is smaller and hence, their propensity to launch riskier investment projects is greater. Riskier projects are obviously more likely to fail and therefore, if the financial leverage of a firm increases it causes creditors propensity to finance to dampen. Thus, asymmetric information drives a wedge between the firm specific interest rate and the market rate. In other words, firms find it cheaper to invest out of retained earnings than out of borrowed funds. This implies, in turn, that those investment projects yielding the market rate will not be executed because the cost of financing in these cases is greater than the internal rate of return of the project. This is an important implication since, absent information asymmetries, these models would be economically justified to execute. Put it another way, the understanding the effects of these phenomena is important because they have serious economic consequences: their existence may lead to the misallocation of resources.

In this framework, monetary policy can influence firms' balance sheets in several ways. A monetary loosening, for example, causes share prices to rise which directly diminishes the effects of the above mentioned information problems. The approach of measuring the effect monetary policy exerts on firms' balance sheet directly is called the financial accelerator approach. This investigates whether weak balance sheets of firms amplify monetary policy shocks on firm spending (see Vermeulen (2000) for an empirical investigation).

Mishkin (1996) puts forward an argument also for indirect monetary policy effects in this context. He argues that monetary policy exerts its influence on investment via the price level and inflation. Since credit agreements are contracted in nominals, a shock in inflation diminishes the real burden borne by borrowers. However, the real value of assets of the borrower does not diminish because it is determined by supply side factors. Moreover, changes in the nominal interest rate modifies firms' cash-flow having direct effects on investment for the financially constrained firms.

Since the publication of the seminal paper of Fazzari et al. (1988) it is usual to control for these financial constrains by entering cash-flow in the regressions. Fazzari et al. (1988) originally applied cash-flow as a proxy for the firms' own funds to control for its effects on investment. However, using cash flow as a proxy for own funds in equations similar to 12 might give rise to multicollinearity, since cash-flow is correlated to future profits and future profitability (Chatelain et al. (2001), Vermeulen (2000)). Yet, extant firm-level databases' cross-section dimension provides for a huge amount of observations which mitigates the multicollinearity problem.

The cash-flow augmented equation is:

$$k_{it} = \sum_{p=1}^p \omega_p k_{i,t-p} + \sum_{q=1}^q \phi_q q_{i,t-q} + \sum_{q=1}^q \sigma_q u_{c_{i,t-q}} + \sum_{q=1}^q \frac{CF_{i,t-q}}{p_{s,t-q}^I K_{i,t-q-1}} + \eta_i + \eta_t + \varepsilon_{it} \quad (14)$$

One might argue that this specification is not a proper one because it is not the control variable – investment or the investment ratio –, but the optimal capital stock that enters eq. (14). To have the control variable

$(I_{it}/K_{i,t-1})$ in the empirical model (14) we use $\Delta k_{it} = \ln(I_{it}/K_{i,t-1} - \delta_{it} + 1)$, which can be calculated from the discrete version of the capital accumulation equation (5). Approximating the right hand side of this latter equation with its first order Taylor series, we arrive at

$$\Delta k_{it} = \frac{I_{it}}{K_{i,t-1}} - \delta_{it}$$

This equation says that capital stock changes are an overall result of investment and depreciation. When investment is equal to the loss of value in the capital stock the real capital stock does not change and there is no net effect of investment. This is usually called replacement investment. If investment is greater (lower) than the depreciation value, the real capital stock increases (decreases) and investment has a positive (negative) net effect on the capital stock. Let \tilde{I}_{it} denote replacement investment and \hat{I}_{it} net investment. Then, the overall investment is $I_{it} = \tilde{I}_{it} + \hat{I}_{it}$.

This distinction between replacement investment and net investment is quite common in the literature (Chirinko (1993), Letterie and Pfann (2003)). However it is not so common to address this distinction explicitly in estimated equations. To be more accurate, equation (14) specifies net changes in the real capital stock, while equations explaining the ratio of investment with respect to capital typically try to explain overall investment. This can be done using the simplifying assumption of constant rate of depreciation. However, if this latter condition does not seem to hold, which is likely in our case (see considerations after the capital accumulation equation in Section 4), the investment rate specification should be modified.

To see this, suppose that capital adjusts according to an ADL(2,1) structure. Subtracting $k_{i,t-1}$ from both sides of equation (14) and using the previous relationships $\Delta k_{it} = \frac{I_{it}}{K_{i,t-1}} - \delta_{it}$ and knowing that $\frac{\tilde{I}_{it}}{K_{i,t-1}} = \delta_{it}$, we have that

$$\begin{aligned} \frac{\hat{I}_{it}}{K_{i,t-1}} &= (\omega_1 - 1) \frac{\hat{I}_{it-1}}{K_{i,t-2}} + (\omega_1 + \omega_2 - 1) k_{i,t-2} + \sum_{q=1}^q \phi_q q_{i,t-q} \\ &+ \sum_{q=1}^q \sigma_q u_{C_{i,t-q}} + \sum_{q=1}^q \frac{CF_{i,t-q}}{p_{s,t-q}^I K_{i,t-q-1}} + \eta_i + \eta_t + \varepsilon_{it} \end{aligned} \quad (15)$$

As we have already mentioned, most of the studies assume that the rate of depreciation, that is, the rate of replacement investment, is constant. In this case, net investment rate could be replaced by overall investment rate in eq. (15) and standard estimation methods can be applied using $\frac{I_{it}}{K_{i,t-1}}$ only, as the constant depreciation rate cancels out due to differencing. This is done by, for example, Chatelain and Tiomo (2001). If the constant depreciation assumption does not seem to hold, that is, the depreciation rate depends on both i and t , the two are not equivalent.

Another specification we estimated is a modified version of eq. (15). This equation is obtained by first differencing eq. (14), using the Taylor-approximation described above and plugging the level of cash flow to this differenced equation. Consequently, net investment is explained by its lagged value(s), the difference of output and user cost and the level of cash-flow. As a result, firm-specific fixed effects cancel out and the equation is:

$$\begin{aligned} \frac{\hat{I}_{it}}{K_{i,t-1}} = & \sum_{p=1}^p \omega_p \frac{\hat{I}_{i,t-p}}{K_{i,t-p-1}} + \sum_{q=1}^q \phi_q \Delta q_{i,t-q} + \sum_{q=1}^q \sigma_q \Delta uc_{i,t-q} \\ & + \sum_{q=1}^q \frac{CF_{i,t-q}}{p_{s,t-q}^I K_{i,t-q-1}} + \Delta \eta_t + \Delta \varepsilon_{it} \end{aligned} \quad (16)$$

Equations similar to eq. (16) were estimated by von Kalckreuth (2001). However, there is an important difference between eq. (16) and the one in von Kalckreuth (2001). In his estimations a fixed effect is added to the differenced equation. He argues in favour of this specification that not only the productivity level but also its growth rate might be firm specific. This would mean that firms were able to achieve significantly different productivity growth at the individual level even during a short estimation period. This assumption is not quite common in the literature and it seems especially strong in our case in light of the short timespan of our panel. Also, if fixed effects were present in the differenced equation (16), using standard difference-based estimators, such as Anderson-Hsiao's or Arrelano-Bond GMM, would lead to differencing twice and hence would result in further loss of observations.

6 The data

Our database consists of the corporate tax returns of double entry book keeping firms between 1992 and 2002. However, the investment ratio is stable and credible only from 1993 so we did not use data in 1992 for the analysis.¹⁵

We excluded several groups from the analysis: financial intermediaries, firms in public administration, compulsory social security and education, firms in health and social work and private households with employed persons.

We also filtered out missing observations for employees, capital and depreciation for the whole database. Where enough information was available, we corrected false data. Using the last two variables we constructed real capital stock for estimation purposes. The steps of this calculation are presented in the next subsection.

We reduced the database further because we thought very small firms' investment behavior is significantly different from other firms. We found that very small firms' tax return data are imperfect and unreliable in many cases. Hence, we excluded firms where the number of employees was lower than two. We also excluded observations where the number of employees was lower than five in three consecutive years. As a result, firms in the final sample with number of employees greater than two and smaller than five in a specific year employ more than five in the previous two or the next two years. Thereby we excluded the smallest firms while best preserved the panel structure of our data.

We cleaned the other variables on the reduced sample. We corrected for false data using the following rules:

- If the calculated real capital stock is negative,
- If sales revenue is negative,
- If the calculated user cost is negative,

¹⁵This suggests that capital revaluations during and after the transition period had still been in process in 1992.

6. The data

Table 1: Number of observations

Year	Number of firms in the population	Number of firms in the analysis	Number of omitted firms in per cent of the population
1993	66 409	18 729	72%
1994	79 794	22 660	72%
1995	90 726	24 447	73%
1996	105 728	26 495	75%
1997	120 480	29 214	76%
1998	130 835	32 835	75%
1999	139 141	35 563	74%
2000	151 913	37 478	75%
2001	184 703	39 406	79%
2002	199 798	42 023	79%
Total number of observations	1 269 527	308 850	76%

6. The data

- If the depreciation rate is greater than 1,
- If the debt to assets ratio is greater than 1.

We also checked for outliers. For the cash-flow ($CF_{it}/p_{st}^I K_{i,t-1}$), depreciation rate (δ_{it}), logarithm of user cost ($\log UC_{it}$) we defined threshold values each year as the 1st and 99th percentiles of the distribution. For the investment rate ($I_{it}/K_{i,t-1}$) these values were the 1st and 95th percentiles. For the change in the capital stock ($\Delta \log K_{it}$), change in sales ($\Delta \log Q_{it}$), the change in the user cost ($\Delta \log UC_{it}$) and the change in employment ($\Delta \log L_{it}$) we used the Chebyshev method: an observation was considered to be outlier if the absolute deviation of a variable from its mean in a specific year was greater than five times its standard deviation: $|y_{it} - \bar{y}_t| > 4 \times sd_t(y_{it})$.

As a result of all this, our unbalanced panel consists of 73,649 firms' data between 1993 and 2002 with 308,850 observations. After industry- and size-based filtering the size of the database collapsed to 31% of the initial data set. The final number of observations is 78% of this smaller database, which is 24% of the whole population.¹⁶

Table 2: Descriptive statistics of variables used, 1993-2002

Variable	Mean	Sd.	Minimum	25%	Median	75%	Maximum
I/K	0.437	0.704	-0.603	0.037	0.175	0.541	5.724
logK	8.911	1.999	0.989	7.572	8.783	10.137	19.857
logQ	10.477	1.545	-0.144	9.427	10.393	11.399	19.829
logUC	-1.750	0.918	-11.764	-2.038	-1.665	-1.313	-0.301
CF/K	0.734	2.686	-14.990	-0.002	0.224	0.846	58.329

The descriptives of variables used in the analysis are summarized in Table 2, definitions and further details are provided in the appendix. Out of these, we give a detailed presentation of our capital stock and user cost data in the next subsection.

¹⁶Obviously, the final number of observations used in the estimations varied because different number of lags of variables were needed at different specifications.

6.1 Capital stock

We encountered several problems measuring the capital stock. We deemed capital stock as the sum of tangibles and intangibles. Ideally, components of the capital stock should be registered on market prices. However, according to Hungarian accounting rules, the capital stock enters the balance sheet on book value and the amount of depreciation also should be accounted against book value. If the market value of the capital asset on the firm's balance sheet differs from its book value, the firm can decide whether it adjusts the value of the capital assets registered on its books. Furthermore, we have no information on the composition and age structure of the firm specific capital stock. Putting all this together, we are given a capital stock which is an amalgam of capital assets with different age and valued at different prices. Hence, raw capital stock data cannot be considered to be valued either at current or constant prices.

We therefore compiled capital stock data using the idea of the perpetual inventory method (PIM). The idea behind the PIM is that having an initial condition, the capital accumulation equation can be used to construct the stock of capital.

$$K_{it} = \sum_{j=0}^t g(t, i) \times I_{i, t-j} \quad (17)$$

where K_{it} is the after-depreciation real capital stock at the end of each year, I_{it} is real investment in year t and $g(t, i)$ is a function that specifies the depreciation of the extant capital stock and new investment. The above equation says that the capital stock can be calculated if we know the initial stock and the net effect of investment and depreciation. If K_{it} is net investment cumulated up to period $(t - 1)$, that is, the before-depreciation capital stock in time t , then the capital stock in time t is

$$K_{it} = (1 - \delta_{it}) K_{i, t-1} + I_{it} \quad (18)$$

This is nothing but the discrete version of the continuous capital accumulation equation (5) defined in the dynamic optimization problem of the

firm. We defined the initial condition of the capital stock as the value in the year the firm entered the database and expressed it in 1992 prices.

To calculate the real capital stock we needed firm-level investment data. We used capital stock data registered according to accounting rules because the database did not contain data on investment directly. We refer to this capital stock data as accounting capital. Investment is calculated based on eq. (18): it is equal to the after-depreciation difference between the accounting capital stock in year t and $(t - 1)$:

$$p_{st}^I I_{it} = \bar{K}_{it} - \bar{K}_{i,t-1} + \delta_{it} \bar{K}_{i,t-1} = \bar{K}_{it} - \bar{K}_{i,t-1} + DEP_{it} \quad (19)$$

where $(p_{st}^I I_{it})$ is nominal investment, \bar{K}_{it} is accounting capital at the end of year t and DEP_{it} is the value of depreciation write-off in year t . Then, deflating investment with the industry specific investment price index (p_{st}^I) , we arrive at investment volume (I_{it}) .

With the knowledge of the initial condition we can construct firm level real capital stock using real investment and the depreciation rate. Our database only contains year-end data, which causes another measurement problem. If we define the effective rate of depreciation as the ratio of accounted depreciation in year t and the accounting capital stock of the previous year-end ($\delta_{it} = DEP_{it}/\bar{K}_{i,t-1}$), we apparently overestimate the realistic depreciation rate for actively investing firms. This is due to the fact that investment as well as disinvestment occurs throughout the whole year seriously affecting accounted depreciation. If a firm invests, it can account an amount of depreciation already in the year of investment and, correspondingly, in the case of disinvestment it can benefit from registering the value of depreciation up to the point of disinvestment. To avoid unrealistically high depreciation rates we assume that investment occurs at the beginning of each year and disinvestment occurs at the end of each year. The capital accumulation equation and the depreciation rate in the two cases is the following:

1. in case of investment ($I_{it} > 0$), $\delta_{it} = \frac{DEP_{it}}{DEP_{it} + \bar{K}_{it}}$ and $K_{it} = (1 - \delta_{it})(K_{i,t-1} + I_{it})$, because the total capital stock against

which the firm writes off depreciation is the stock after investment at the 1st of January, and

$$2. \text{ in case of disinvestment } (I_{it} < 0), \quad \delta_{it} = \frac{DEP_{it}}{\bar{K}_{it}} \quad \text{and} \\ K_{it} = (1 - \delta_{it}) K_{i,t-1} + I_{it}$$

We might assume, as an alternative, that investment and disinvestment takes place in the middle of the year. In this case the firm writes off half of its depreciation on the new investment and half of its depreciation on the disinvestment kept for six months. Hence, without regard to the sign of I_{it} , the depreciation rate and the capital stock at the end of the year can be calculated as

$$\delta_{it} = \frac{DEP_{it}}{DEP_{it} + \bar{K}_{it} + \bar{K}_{i,t-1}} \quad \text{and} \quad K_{it} = (1 - \delta_{it}) K_{i,t-1} + \left(1 - \frac{\delta_{it}}{2}\right) I_{it}.$$

We carried out our estimations using variables calculated in this manner but results were robust to these modification. Therefore, these results are not published in this paper.

6.2 User cost

Following equation (9) in the derivation, we defined the user cost as

$$UC_{it} = \frac{p_{st}^I}{p_{st}(1 - u_{it})} \left[\left(\frac{E_{it}}{B_{it} + E_{it}} \right) LD_t + \left(\frac{B_{it}}{B_{it} + E_{it}} \right) (1 - u_{it}) IR_t \right. \\ \left. - \frac{\Delta p_{s,t+1}^I}{p_{st}^I} + (1 - u_{it}) \delta_{it} \right] \quad (20)$$

where B_{it} is the sum of long and short term liabilities, E_{it} is own funds, IR_t is a weighted average of bank lending rates with maturities over one year, LD_t is the one year benchmark t-bill rate, u_{it} is the effective tax rate, p_{st}^I is the industry specific investment price index, p_{st} is the industry specific price deflator (PPI or GDP deflator, depending on industry) and δ_{it} is the effective depreciation rate as defined in the previous section.

Since the firm finances its investment using both external funds ($B_{it}/(B_{it} + E_{it})$) and internal funds ($E_{it}/(B_{it} + E_{it})$), the user cost of capital

is determined by the interest rates of borrowed funds, the return on equity and the shares of these sources of capital components in the firm's liabilities. Opposed to the theoretical formula where the denominators contain physical capital, we used the sum of external and internal funds in our calculations. This is justified by the fact that the optimal rate of external funds depending on tax advantages is a function of the accounting leverage.

The return on equity was proxied using benchmark t-bill rates. This obviously underestimates the cost of own funds. Namely, it is standard that the expected rate of return on a risky project is greater than the risk free rate. The difference between the two is the risk premium. However, the risk premium is difficult to measure so for the sake of simplicity we consider the benchmark rate as a proxy for the opportunity cost of equity.¹⁷

The cost of borrowed funds are generally measured by the interest paid. Calculating an apparent interest rate, which is the ratio of interest paid and total stock of debt, would be evident. However, there is no separated data for debt in the firms' liability stock prior to 1999. Dividing interest paid by the sum of short and long term liabilities significantly underestimates the real interest burden¹⁸, which demonstrates the huge share of non-interest bearing liabilities (e.g. accounts payable) within overall liabilities. Consequently, we used the weighted average of bank lending rates assuming all the firms can borrow at similar conditions.

¹⁷Three year rates are only available since 1996, the five year rates since 1997 and the most compelling ten year rate since 1999. Therefore we used the one year benchmark rate uniformly between 1992 and 2002.

¹⁸The variable created in this fashion oscillated between 4 and 6% on average.

7 Estimation and results

7.1 Estimation method

Our first model based on eq. (14) was the ADL(2,1) in levels of the log of the capital stock:

$$k_{it} = \sum_{p=1}^2 \omega_p k_{i,t-p} + \sum_{q=1}^1 \phi_q q_{i,t-q} + \sum_{q=1}^1 \sigma_q uc_{i,t-q} + \sum_{q=1}^1 \frac{CF_{i,t-q}}{p_{s,t-q}^I K_{i,t-q-1}} + \eta_i + \eta_t + \varepsilon_{it}$$

where ε_{it} is a white noise term, uncorrelated across firms and in time. Individual effects are stochastic so both the lags of capital and the other variables can be correlated to η_i . Because of the endogeneity problem, some transformation is needed to get rid of these individual effects.

The well-known within estimator handles this with mean-differencing but it will still produce inconsistent parameter estimates in the presence of lagged dependent variables and other endogeneity problems, particularly in panels with short time period. The lag of the mean-differenced dependent variable $\left(\tilde{k}_{i,t-1} = k_{i,t-1} - (T-2)^{-1} \sum_{s=1}^{T-1} k_{is}\right)$ and the mean-differenced error term $\left(\tilde{\varepsilon}_{it} = \varepsilon_{it} - (T-2)^{-1} \sum_{s=2}^T \varepsilon_{is}\right)$ are by all means correlated. If $(\omega_1 > 0)$, the term $-(T-2)^{-1} k_{it}$ in the former and the term ε_{it} in the latter are negatively correlated and, also, the term $k_{i,t-1}$ and the term $-(T-2)^{-1} \varepsilon_{i,t-1}$ are negatively correlated. These negative correlations suppress the positive correlation between other terms $(-(T-2)^{-1} k_{i,t-1}$ and $-(T-2)^{-1} \varepsilon_{i,t-1}$, for example). As a result, the overall negative correlation between $\tilde{k}_{i,t-1}$ and $\tilde{\varepsilon}_{it}$ leads to significantly underestimated within parameter estimate of the lagged dependent variable (Nickell (1981)).

From Nickell (1981) we know that the inconsistently estimated parameter of the lagged dependent variable impacts the parameter estimates of the other variables as well. The direction of the bias depends on the sign of correlation between the lagged dependent variable and other explanatory variables. Continuing to assume that $(\omega_1 > 0)$, if this correlation is positive

the parameter estimate of the other explanatory variable is biased downwards and vice versa.

The endogeneity of explanatory variables give rise to inconsistency of the estimates, too. A shock to the capital stock affects the firm's output because it is clear from the production technology specification that a positive shock to the capital stock causes output to increase. A capital shock also might modify the cost of capital. A change in the capital stock might alter the leverage of the firm and, according to eq. (4) the bank lending rate and the user cost. Taking these factors into account, the endogeneity of cash-flow cannot be ruled out because a firm's cash-flow is a positive function of sales revenue. However, cash-flow and leverage are negatively correlated. These effects do not necessarily cancel out each other but the direction of the bias cannot be foreseen.

Individual effects can be eliminated by first differencing as well. As opposed to the within transformation, the error term values for every time period do not appear in the equation in this case and the strict exogeneity of explanatory variables is not required. In the case of dynamic panel data models, however, OLS estimation on first differences of variables still produces inconsistent parameter estimates. This is because the lagged dependent variable ($\Delta k_{i,t-1}$) and the differenced error term ($\Delta \varepsilon_{it}$) are negatively correlated, which comes from the opposite sign of the $(t-1)$ terms. This negative correlation causes the parameter estimate of the lagged dependent variable to be biased downwards with the extent being generally higher than that of the within estimates.

Consistent parameter estimates can be obtained using appropriate instruments for the endogenous variables. Anderson and Hsiao (1981) suggests the first differenced two stage least squares (2SLS) estimator. Maintaining the initial assumption that there is no autocorrelation in the disturbance term and assuming that the capital stock and all the explanatory variables are uncorrelated to future disturbances, lags $(t-2)$ and earlier of the variables – both levels and differences – are all valid instruments. Empirical research showed, however, that using levels of variables as instruments produce gen-

erally more efficient estimates than differences. Another advantage of using level instruments is that we do not lose additional observations due to lagged differencing, that is, we have more instruments given the number of observations.

Also, lagged values of the employment level were used as possible excluded instruments. Since labour is one of the main determinants of production, the number of people employed is a suitable candidate. However, the two input factors are evidently interrelated and thus present labour usage may be correlated with the error term, which violates the orthogonality condition. Moreover, some recent empirical research have documented significant dynamic interrelation between the two input factors (Dixit (1997)). This means that the correlation between the demand for capital and the demand for labour is not restricted to one period but adjustment dynamics in one factor affect adjustment in the other factor over a period of more than one year. The fact that labour adjustment may precede investment implies that lagged employment is also correlated with the present error term. Nevertheless, it is reasonable to assume that this correlation does not hold if the time span between investment and labour decisions is large enough. Therefore, we assume that the error term in t is uncorrelated with employment in $(t - 2)$ and earlier, which means that present investment decisions do not affect firm's labour policy two years before. Consequently, the level of employment in $(t - 3)$ and earlier are possible instruments as well. Evidently, the validity of these instruments was tested using appropriate statistical methods ("*difference-in-Hansen test*"), just as the validity of the other instruments used in the regressions.

7.2 Econometric results

We summarized our estimation results of the first specification in Table 3. The parameter estimates of the Within estimator (first two columns) appear to be significant for all variables. However, as we mentioned earlier, we know that the parameter estimate of the lagged dependent variable is bi-

ased downwards because of the incorrect assumption of strict exogeneity. In spite of the downward bias, the magnitude of the parameter estimate (0.609) of the lagged dependent variable points to quite high persistence in capital stock dynamics. The estimates of both sales and user cost parameters are of the expected sign. This is also true for cash-flow. However, the magnitude of cash-flow parameter estimates shows that firms' investment is not highly sensitive to the financial position. The results obtained using First-differenced estimates (second and third columns) are, by and large, in line with the Within estimates. There are two differences, though. First, in line with the theoretical considerations, it is apparent that the parameter estimate of the lagged dependent variable is more downward biased (0.18) than the within estimate. Second, the parameter estimate of lagged sales is of higher magnitude in this estimation.

In the 2SLS estimates, we instrumented endogenous variables by all the available observations for each variable back to time $(t - 5)$ in order to improve the accuracy of our estimations.¹⁹ However, we found that including lag $(t - 2)$ of sales resulted in invalid instrument matrices, so we used $(t - 3)$ to $(t - 5)$ lags of this variables as instruments. One can argue in favour of omitting lags $(t - 2)$ of this variable that, for example, current output is correlated with future output, that is, current output can be interpreted as a proxy for future demand conditions. Therefore, an investment shock in time t is correlated with lagged output. Of course, this implies that earlier lags of sales might also be somewhat correlated with the current capital stock. However, we found that using lags $(t - 3)$ and earlier as instruments did not result in categorically invalidating the instrument matrix and can be accepted as valid instruments. Also, employment $(t - 3)$ to $(t - 5)$ were used as excluded instruments (see consideration above). The use of employment as instrument improves significantly the accuracy of our estimates without violating the orthogonality condition. As a result, the marginal significance level of the Hansen J-statistic in our final specification was 0.062, the absence

¹⁹Since cash-flow contains lagged capital in the denominator, we fixed the maximal number of lags used as instrument to four in order to save observations. Therefore, we "only" lose two years in the estimation comparing to the simple FD estimator.

of correlation between the differenced error term and the instrument matrix could not be rejected at 5% significance level. Based on the AR2 test for second order serial correlation in the residuals, we could not reject the null of zero serial correlation.²⁰ Moreover, diagnostic tests and parameter estimates seemed to be robust to changes in the lag structure used in the instrument matrix.

The 2SLS parameter estimate of $(\log K_{i,t-1})$ is 0.71, which is higher than the one obtained in either Within or First-difference estimation. This relatively high persistence in the capital stock is in line with our expectations. However, the parameter of the second lag of capital was not significantly different from zero. This suggest that only the lag $(t - 1)$ plays a role in the adjustment process of capital. 2SLS results show that the sensitivity of capital stock with respect to contemporaneous sales is higher (0.5) than previous biased estimates. The parameter of lagged sales did not appear to be statistically different from zero.

The estimate of the contemporaneous user cost parameter is statistically significant. The order of magnitude (-0.223) suggests that user cost changes are important determinants of corporate investment. This provides evidence against simple sales-accelerator models that include only sales and exclude user costs. The lagged parameter estimate (-0.016) is lower in absolute value than that of time t and almost significant at usual significance levels. As is generally the case in the empirical literature, the cash-flow capital ratio enters the equations with a significantly positive sign. Contemporaneous cash-flow has a greater effect on current investment, while the significance level of past values of cash-flow is much higher than that of current cash flow.

²⁰If the AR(2) test showed nonzero correlation, the consistency of the Anderson-Hsiao estimates would be called into question. This is because the second order serial correlation of differenced error terms means that $(t - 2)$ shocks are reflected in the capital level at time t and hence second lags of the endogenous variables would not be orthogonal to the differenced error term.

These parameter estimates imply long run coefficients that provide some interesting empirical findings.²¹ The long run coefficient of sales is practically unity which provides evidence for constant returns to scale in the production function.²² This surprising result was robust across specifications, as will be seen later. However, one has to exercise care in interpreting this as straightforward evidence because we are using sales as a proxy for output. The long run user cost parameter²³ estimate appears to be quite high (-0.828) compared to other estimates. At a glance, it seems to be a high elasticity compared to certain former estimates: estimating a comparable model on French manufacturing data, Chatelain and Tiomo (2001) have found this coefficient to be (-0.16)-(-0.311). Nevertheless, it is not completely out of line with previous results because Chatelain and Teurlai (2004) estimated this elasticity to be even higher for small service sector firms. The finding that our estimated user cost elasticity is below unity implies that the assumption of Cobb-Douglas technology would not have been appropriate in our case.

In the second specification, the ratio of net investment with respect to capital is regressed on a set of variables (see equation (15) for a detailed presentation). We present only the consistent parameter estimates hereafter. Diagnostics indicated that this specification was more sensitive to the choice of the instrument matrix than the previous specification (Table 4). This instability was also reflected in point estimates. We proceeded choosing the instrument matrix in the same manner as we have done in the previous specification and chose all available lags back to $(t - 5)$ as instruments. However, instead of lags of the investment ratio, we used the lagged levels of capital ($\log K$) as instruments in the final model because the specification performed

²¹Nevertheless, it has to be stressed again that some caution is needed when interpreting these coefficients. We noted earlier when we defined long run coefficients that ADL parameters may include effects of changes in expectations and technology and they do not necessarily embody only the adjustment characteristics of variables.

²²See the coefficient of output in equation 11 describing the long run demand for capital. It can be seen that if the coefficient of output is unity then this implies the returns-to-scale parameter to be unity as well.

²³Which is, in the context of our model, also the estimate of the elasticity of substitution between production factors.

better in terms of diagnostics. The Hansen-J statistic's marginal significance level was 0.084. The AR(2) structure of the residuals can easily be rejected based on the test.

Regarding persistence, we note that it is not the parameter of the lagged investment ratio but that of the $\log K_{t-2}$ that determines the true capital persistence in this specification (see equation (15)). Although the “apparent” auto-regressive parameter is $(\omega_1 - 1)$, the underlying auto-regressive component remains $(\omega_1 + \omega_2)$. Therefore, the persistence parameter can be obtained by adding 1 to the estimated parameter of $\log K_{t-2}$. With a value of 0.47, this specification implies lower persistence for the capital stock than the one obtained in the level estimation (0.71).

The contemporaneous sales parameter is estimated to be over unity (1.38) in this specification while the lagged is negative (-0.83), both being significantly different from zero and greater in absolute terms than in the previous specification. However, the long run elasticity is still practically unity. This corroborates the finding of constant returns to scale, which emerged from the level estimation. Yet, the relatively high and opposite sign short run elasticities can hardly be interpreted as a plausible adjustment process.

The user cost elasticities (-0.38 and -0.03) are significant and greater in absolute terms compared to the level estimation results. However, due to lower persistence, the long run coefficient (-0.83) is comparable in magnitude to the previous result. For cash-flow, both parameters are significantly different from zero and greater than previously obtained elasticities. As a result, the long run coefficient of cash-flow is also greater (0.43) than it was in the level estimation (0.23). The greater sensitivity is not necessarily implausible because cash-flow might take up the effects of profitability expectations and future sales since output and cash-flow are correlated.

In sum, this specification was less stable and these results are slightly less plausible than those obtained using the level equation.

The third specification regresses the investment ratio on differences and lagged differences of sales, user cost and the level of cash-flow. This specifi-

cation proved to be much more robust to different instrument matrices: the orthogonality of instruments could be accepted in all cases (Table 4). The marginal significance level of the Hansen-J statistic of our final instrument set is 0.21, this same value for the AR(2) test is 0.59.

Capital persistence in this specification is determined by the sum of estimated lagged dependent variable parameters. In this case persistence is valued to be 0.58, which is comparable to but lower than that of the level estimation (0.71) being still higher than in the second specification (0.47). Although having the same signs as in the second specification, sales parameter estimates are lower in absolute terms (0.78 and -0.352) than those in the second specification (1.375 and -0.826). This suggests parameters can be more plausibly interpreted as adjustment process characteristics. The long run coefficient of sales is robustly close to unity again. The user cost parameters are slightly higher in absolute value (-0.285 and -0.036) but still close to those produced in the level estimation (-0.223 and -0.016). The long run coefficient in this specification was close to those obtained by the two other specifications (-0.76). Regarding cash-flow, the contemporaneous parameter estimate is not statistically different from zero, but the lagged cash-flow appears to have significant explanatory power. This reinforces what one might have suspect already looking at the significance levels obtained in the previous estimations, mainly in the first specification.

To summarize, we believe that our overall sample estimation results are plausible. The parameter estimates are of the expected sign and magnitude. To put results in an international context, we compare long run coefficients from the third specification to what Angeloni et al. (2002) estimated using data for Germany, France, Italy and Spain. Despite differences, our parameter estimates are not out of line with those of Angeloni et al. (2002).²⁴

²⁴These differences might account for the disparities of results. First, their database contained mostly manufacturing data. Second, they have benefited from a longer time span (1983-99) of their database letting them use earlier lags both in the ADL structure and as instruments in the estimation. Third, they assert that their sample is biased towards larger firms. This might also be true for our sample but it is hard to assess whether the bias itself causes parameters to be inacceptably out of line with expectations. Last,

7. Estimation and results

Table 3: Estimation results - Specification 1

dependent variable: log capital (logKt)

	Within		First-differenced		Anderson-Hsiao 2SLS	
	<i>coef.</i>	<i>Z stats.</i>	<i>coef.</i>	<i>Z stats.</i>	<i>coef.</i>	<i>Z stats.</i>
logK _{t-1}	0.609	238.65	0.181	69.02	0.710	12.85
logK _{t-2}	0.056	23.31	0.105	42.55	0.001	0.10
logQ _t	0.157	72.98	0.161	72.68	0.500	2.76
logQ _{t-1}	0.035	15.58	0.100	43.24	-0.207	-1.54
logUC _t	-0.492	-191.63	-0.375	-154.22	-0.223	-2.95
logUC _{t-1}	-0.003	-3.10	-0.030	-27.57	-0.016	-1.56
CF _t /K _{t-1}	0.035	76.60	0.029	65.54	0.053	1.82
CF _{t-1} /K _{t-2}	0.015	32.94	0.017	40.22	0.013	2.61
Long-run coef. of sales	0.574	91.82	0.366	81.38	1.013	6.09
Long-run coef. of user cost	-1.480	-130.63	-0.567	-115.85	-0.828	-3.36
Long-run coef. of cash-flow	0.152	57.27	0.065	54.66	0.229	1.58
Hansen J statistic					16.26	<i>P=0.062</i>
AR2 test					1.00	<i>P=0.317</i>
Wald test for year dummies	5684.16	<i>P=0.000</i>	4927.81	<i>P=0.000</i>	54.25	<i>P=0.000</i>

Source: Apeh 1993-2002

Notes: Capital, sales and cash-flow measured in thousands of HUF. Cash-flow deflated by sectoral investment price index (own estimation), sales deflated by sectoral PPI for industry and GDP deflator for agriculture and services. Year dummies included. Heteroscedasticity-robust standard errors estimates. Long-run standard errors were computed using "delta method" (see e.g. Wooldridge (2001), pp. 44)

Instruments for 2SLS estimation: second to fifth lags of capital and user cost, second to fourth lags of cash-flow, third to fifth lags of sales and employment.

7. Estimation and results

Table 4: Estimation results - Specifications 2 and 3

dependent variable: net investment rate (\hat{I}_t/K_{t-1})

	2 nd specification		3 rd specification	
	<i>coef.</i>	<i>Z stats.</i>	<i>coef.</i>	<i>Z stats.</i>
\hat{I}_{t-1}/K_{t-2}	-0.352	-3.86	0.595	6.50
\hat{I}_{t-2}/K_{t-3}			-0.016	-1.49
$\log K_{t-2}$	-0.531	-3.85		
$\log Q_t$	1.375	2.59		
$\log Q_{t-1}$	-0.826	-2.00		
$\log UC_t$	-0.379	-2.07		
$\log UC_{t-1}$	-0.028	-1.12		
$d\log Q_t$			0.781	2.98
$d\log Q_{t-1}$			-0.352	-1.77
$d\log UC_t$			-0.285	-2.36
$d\log UC_{t-1}$			-0.035	-1.95
CF_t/K_{t-1}	0.190	2.92	-0.005	-0.13
CF_{t-1}/K_{t-2}	0.041	3.93	0.065	3.36
Long-run coef. of sales	1.032	4.76	1.019	5.19
Long-run coef. of user cost	-0.765	-2.51	-0.760	-2.60
Long-run coef. of cash-flow	0.433	2.08	0.142	2.64
Hansen J statistic	13.91	$P=0.084$	10.97	$P=0.204$
AR2 test	0.12	$P=0.905$	0.54	$P=0.588$
Wald test for year dummies	31.77	$P=0.000$	50.53	$P=0.000$

Source: Apeh 1993-2002

Notes: Capital, sales and cash-flow measured in thousands of HUF. Cash-flow deflated by sectoral investment price index (own estimation), sales deflated by sectoral PPI for industry and GDP deflator for agriculture and services. Year dummies included. Heteroscedasticity-robust standard errors estimates. Long-run standard errors were computed using "delta method" (see e.g. Wooldridge (2001), pp. 44) Instruments for both 2nd and 3rd specification: second to fourth lags of capital and cash-flow, second to fifth lags of user cost, third to fifth lags of sales and employment.

For the user cost, their long run elasticities ranged between (-0.027)-(-0.521), with the estimate for Germany being the highest and for France being the lowest. For cash-flow, the estimate fell between (0.079 for Germany)-(0.301 for Italy). It is only the long run parameter of sales that is consistently lower in their estimation (0.018 for Spain)-(0.387 for Germany).

We carried out estimations also with the "difference-GMM" estimator suggested by Arrelano and Bond (1991). However, results based on the entire sample proved to be unstable to the instrument matrix. Heterogeneity across firms might well explain why these latter results are unstable. Also, the homogeneity assumption of parameters of other variables in general might be a question. For example, firm-level heterogeneity might be key from the point of view of cash-flow effects as larger firms are more likely to be less financially constrained than smaller firms. The validity of these hypotheses is to be tested by splitting the sample but presenting sample split results are beyond the scope of this paper.

8 Conclusion

We investigated corporate investment behavior in Hungary using non-financial firm level data between 1993 and 2002. Using the standard neoclassical framework we estimated several specifications. Assuming that optimal capital stock adjusts according to an ADL structure, we derived a level equation for the stock of capital and two equations for the investment-to-capital ratio. In each empirical equation we used firm specific user cost of capital data along with sales and cash-flow.

The main findings of the investigation are the following. Estimations based on the whole sample show that in the long run the user cost of capital

but not least their specification contains a fixed effect even in the differenced equation. This causes the AR parameters to be smaller because the firm-specific effect takes up the autoregressive characteristics of investment rate dynamics. To understand what this implies and what the considerations are behind including/omitting a fixed effect in the differenced equation, see the discussion of the last equation within the section on empirical models.

is a significant determinant of investment and the long run sensitivities are, broadly speaking, in line with previous European estimates. The difference of results might be, at least partly, explained by sample differences and certain specification-related issues.

This result invalidates simple sales accelerator models where the only important determinant of investment is output. We also discuss that there are mechanisms, though not obvious, through which long term interest rate changes affect the user cost and, in the end, investment. It has to be stressed, however, that being essentially partial, this model is not able to describe the exact mechanism how monetary impulses are transmitted to the cost of capital and, accordingly, corporate investment.

Another interesting finding of the paper is that the coefficient of output is robustly close unity, which provides strong evidence for constant returns to scale in the production function. To control for financial constrain effects we added cash-flow to the equations. Results show that the financial position of a firm is an important determinant of investment suggesting that credit channel effects might be at work.

Our results provide the first set of microeconomic insights to Hungarian corporate investment behavior. Drawing on these, further investigations, including splitting the sample and applying more recent frameworks, will be aimed at depicting a more refined picture of investment behavior in Hungary.

References

- ABEL, A. B. and O. J. BLANCHARD (1986), "The Present Value of Profits and Cyclical Movements in Investment", *Econometrica*, vol. 54, no. 2, pp. 249–273.
- ABEL, A. B., A. K. DIXIT, J. C. EBERLY and R. S. PINDYCK (1996), "Options, the Value of Capital and Investment", *The Quarterly Journal of Economics*, vol. 111, no. 3, pp. 753–777.
- AKERLOF, G. A. (1970), "The Market for "Lemons": Quality Uncertainty and the Market Mechanism", *The Quarterly Journal of Economics*, vol. 84, no. 3, pp. 488–500.
- ANDERSON, T. W. and C. HSIAO (1981), "Estimation of Dynamic Models with Error Components", *Journal of the American Statistical Association*, vol. 76, pp. 598–606.
- ANDERSON, T. W. and C. HSIAO (1982), "Formulation and Estimation of Dynamic Models Using Panel Data", *Journal of Econometrics*, vol. 18, pp. 47–82.
- ANGELONI, I., A. KASHYAP, B. MOYON and D. TERLIZZESE (2002), "Monetary Transmission in the Euro Area: Where Do We Stand?", *ECB Working Paper 114*, European Central Bank.
- ARRELANO, M. and S. BOND (1991), "Some Tests of Specification for Panel Data: Monte Carlo Evidence and an Application to Employment Equations", *Review of Economic Studies*, vol. 58, no. 2, pp. 277–297.
- BERNANKE, B. S. and M. GERTLER (1995), "Inside the Black Box: The Credit Channel of Monetary Policy Transmission", *NBER Working Paper 5146*, National Bureau of Economic Research, Inc.
- BUTZEN, P., C. FUSS and P. VERMEULEN (2001), "The Interest Rate and Credit Channels in Belgium: An Investigation with Micro-Level Firm Data", *Nbb working paper*, National Bank of Belgium.

- CHATELAIN, J.-B., A. GENERALE, I. HERNANDO and U. VON KALCKREUTH (2001), “Firm Investment and Monetary Transmission in the Euro Area”, *ECB Working Paper 112*, European Central Bank.
- CHATELAIN, J.-B. and J.-C. TEURLAI (2004), “The Impact of the Cost of Capital and of the Decision to Invest or to Divest on Investment Behavior: An Empirical Investigation Using a Panel of Small and Medium French Services Firms”, European Association for Research in Industrial Economics Conference Paper, Berlin.
- CHATELAIN, J.-B. and A. TIOMO (2001), “Investment, The Cost of Capital, and Monetary Policy in the Nineties in France”, *ECB Working Paper 106*, European Central Bank.
- CHIRINKO, R. S. (1993), “Business Fixed Investment Spending: Modeling Strategies, Empirical Results, and Policy Implications”, *Journal of Economic Literature*, vol. 31, no. 4, pp. 1875–1911.
- CHIRINKO, R. S., S. M. FAZZARI and A. P. MEYER (1999), “How Responsive is Business Capital Formation to its User Cost?: An Exploration with Micro Data”, *Journal of Public Economics*, vol. 74, no. 1, pp. 53–80.
- DARVAS, Z. and A. SIMON (2000), “Capital Stock and Economic Development in Hungary”, *The Economics of Transition*, vol. 8, no. 1.
- DIXIT, A. (1997), “Investment and Employment Dynamics in the Short Run and the Long Run”, *Oxford Economic Papers, New Series*, vol. 49, no. 1, pp. 1–20.
- FAZZARI, S. M., R. G. HUBBARD, B. C. PETERSEN, A. S. BLINDER and J. M. POTERBA (1988), “Financing Constraints and Corporate Investment”, *Brookings Papers on Economic Activity*, vol. 1988, no. 1, pp. 141–206.
- GOULD, J. P. (1968), “Adjustment Costs in the Theory of Investment of the Firm”, *The Review of Economic Studies*, vol. 35, no. 1, pp. 47–55.

- HALL, R. E. and D. W. JORGENSEN (1967), “Tax Policy and Investment Behavior”, *The American Economic Review*, vol. 57, no. 3, pp. 391–414.
- HAYASHI, F. (1982), “Tobin’s Marginal Q and Average Q: A Neoclassical Interpretation”, *Econometrica*, vol. 50, no. 1, pp. 213–224.
- HAYASHI, F. (2000), “The Cost of Capital, Q, and the Theory of Investment Demand”, in: L. J. Lau (ed.), *Econometrics and the Cost of Capital*, The MIT Press.
- JORGENSEN, D. W. (1963), “Capital Theory and Investment Behavior”, *The American Economic Review*, vol. 53, no. 2, pp. 247–259, papers and Proceedings of the Seventy-Fifth Annual Meeting of the American Economic Association.
- JORGENSEN, D. W. (1972), “Investment Behavior and the Production Function”, *The Bell Journal of Economics and Management Science*, vol. 3, no. 1, pp. 220–251.
- LETTERIE, W. A. and G. A. PFANN (2003), “On the Identification of High and Low Regimes in Equipment Investment Expenditures of Firms”, Forthcoming.
- LUCAS, R. E. and E. C. PRESCOTT (1971), “Investment Under Uncertainty”, *Econometrica*, vol. 39, no. 5, pp. 659–681.
- MISHKIN, F. S. (1996), “The Channels of Monetary Transmission: Lessons for Monetary Policy”, *NBER Working Paper 5464*, National Bureau of Economic Research, Inc.
- MUTH, J. F. (1961), “Rational Expectations and the Theory of Price Movements”, *Econometrica*, vol. 29, no. 3, pp. 315–335.
- NICKELL, S. (1981), “Biases in Dynamic Models with Fixed Effects”, *Econometrica*, vol. 49, no. 6, pp. 1417–1426.
- PINDYCK, R. S. (1991), “Irreversibility, Uncertainty and Investment”, *Journal of Economic Literature*, vol. 29, no. 3, pp. 1110–1148.

- PULA, G. (2003), “Capital Stock Estimation in Hungary: A Brief Description of Methodology and Results”, *MNB Working paper 2003/7*, Magyar Nemzeti Bank.
- TOBIN, J. (1969), “A General Equilibrium Approach to Monetary Theory”, *Journal of Money, Credit and Banking*, vol. 1, no. 1, pp. 15–29.
- VALDERRAMA, M. (2001), “Credit Channel and Investment Behavior in Austria: A Microeconomic Approach”, *ECB Working Paper 108*, European Central Bank.
- VERMEULEN, P. (2000), “Business Fixed Investment: Evidence of a Financial Accelerator in Europe”, *ECB Working Paper 37*, European Central Bank.
- VON KALCKREUTH, U. (2001), “Monetary Transmission in Germany: New Perspectives on Financial Constraints and Investment Spending”, *ECB Working Paper 109*, European Central Bank.
- WHITE, H. (1982), “Instrumental Variables Regression with Independent Observations”, *Econometrica*, vol. 50, no. 2, pp. 483–500.
- WOOLDRIDGE, J. M. (2001), *Econometric Analysis of Cross Section and Panel Data*, The MIT Press.

Appendix

The variables were constructed from tax return and balance sheet data of double entry book keeping Hungarian companies between 1992 and 2002. Costs and sales revenues were deflated using industry specific production price deflators for manufacturing, energy and mining. For other industries (agriculture, construction and services) we used industry specific GDP deflators. In calculating firm specific real capital stock we used weighted averages of domestic sales prices of machinery investment, import prices of machinery investment and construction investment prices of the industries where the weights were the domestic, import and construction investment proportions of each industry. Definitions of the variables are listed below.

Number of employed (L): Average number of employed during the year, rounded to the nearest integer.

Capital stock (K): The stock of tangible and intangible assets. There is no data collected for investment in corporate tax returns, hence capital data cannot be constructed by the generally used version of the perpetual inventory method (see Section 6.1).

Output (Q): Output is proxied by sales revenues of the firm.

User cost of capital (UC): User cost is defined as (see Section 6.2):

$$UC_{it} = \frac{\frac{p_{st}^I}{p_{st}} \left[\left(\frac{E_{it}}{B_{it} + E_{it}} \right) LD_t + \left(\frac{B_{it}}{B_{it} + E_{it}} \right) (1 - u_{it}) IR_t - \frac{\Delta p_{s,t+1}^I}{p_{st}^I} + (1 - u_{it}) \delta_{it} \right]}{(1 - u_{it})}$$

where:

B_{it} = The sum of short and long term liabilities. It contains: accounts payable, liabilities to owners, sum of short term credits and loans, and other liabilities. Long term liabilities are composed of investment credits and other credits.

E_{it} = Equity is calculated: subscribed capital – subscribed capital unpaid + capital reserve + revaluation reserve + profit or loss for the year + accumulated profit reserve.

IR_t = weighted average of bank lending rates with maturities over one year

LD_t = one year benchmark t-bill rate

u_{it} = effective tax rate

δ_{it} = effective depreciation rate

- if $I_{it} > 0$: $\delta_{it} = DEP_{it} / (DEP_{it} + \bar{K}_{it})$

- if $I_{it} < 0$: $\delta_{it} = DEP_{it} / \bar{K}_{it}$

where DEP_{it} is value of depreciation accounted in year t and K_{it} is accounting capital at the end of year t .

Where equity was negative, we assumed $(E_{it} / (B_{it} + E_{it})) = 0$ and $(B_{it} / (B_{it} + E_{it})) = 1$. In these cases the user cost is determined entirely by the cost of external funds.

p_{st} = industry specific price deflator (PPI for industry and GDP deflator for agriculture, construction and services)

p_{st}^I = industry specific investment price index. As yet, the Hungarian Central Statistics Office has not published industry specific price indices for the period prior to 1999, hence we calculated them as weighted averages of investment prices of domestic machinery, investment prices of import machinery investment and construction investment prices in total economy where the weights were the domestic, import machinery investment and construction investment proportions of each industry.

Cash flow (CF): Firms' cash flow was calculated on the basis of Schedule No. 7 to Act C of 2000 On Accounting. We defined cash-flow as: Income before taxes + Depreciation write-off + Loss in value and back-marking – Change in trade debtors – Change in accrued and deferred assets – Change in inventories + Change in accrued and deferred liabilities + Change in short term liabilities + Change in long term liabilities + Change in subscribed capital (corrected for subscr. cap. unpaid) – Corporate tax paid or payable – Dividends and profit sharing paid or payable.

MNB Füzetek <http://www.mnb.hu/>

MNB Working Papers <http://english.mnb.hu/>

1995/1

SIMON, András: Aggregált kereslet és kínálat, termelés és külkereskedelem a magyar gazdaságban 1990-1994
Aggregate Demand and Supply, Production and Foreign Trade in the Hungarian Economy, 1990-1994 (available only in Hungarian)

1995/2

NEMÉNYI, Judit: A Magyar Nemzeti Bank devizaadósságán felhalmozódó árfolyamvesztés kérdései
Issues of Foreign Exchange Losses of the National Bank of Hungary (available only in Hungarian)

1995/3

KUN, János: Seignorage és az államadóság terhei
Seignorage and the Burdens of Government Debt (available only in Hungarian)

1996/1

SIMON, András: Az infláció tényezői 1990-1995-ben
Factors of Inflation, 1990-1995 (available only in Hungarian)

1996/2

NEMÉNYI, Judit: A tőkebeáramlás, a makrogazdasági egyensúly és az eladósodási folyamat összefüggései a Magyar Nemzeti Bank eredményének alakulásával
The Influence of Capital Flows, Macroeconomic Balance and Indebtedness on the Profits of the National Bank of Hungary (available only in Hungarian)

1996/3

SIMON, András: Sterilizáció, kamatpolitika az államháztartás és a fizetési mérleg
Sterilization, Interest Rate Policy, the Central Budget and the Balance of Payments (available only in Hungarian)

1996/4

DARVAS, Zsolt: Kamatkülönbség és árfolyam-várakozások
Interest Rate Differentials and Exchange Rate Expectations (available only in Hungarian)

1996/5

VINCZE, János — ZSOLDOS, István: A fogyasztói árak struktúrája, szintje és alakulása Magyarországon 1991-1996-ban; Ökonometriai vizsgálat a részletes fogyasztói árindex alapján
The Structure, Level and Development of Consumer Prices in Hungary, 1991-1996 — An Econometric Analysis Based on the Detailed Consumer Price Index (available only in Hungarian)

1996/6

CSERMELY, Ágnes: A vállalkozások banki finanszírozása Magyarországon 1991-1994
Bank Financing of Enterprises in Hungary, 1991-1994 (available only in Hungarian)

1996/7

BALASSA, Ákos: A vállalkozói szektor hosszú távú finanszírozásának helyzete és fejlődési irányai
The Development of Long-term Financing of the Enterprise Sector (available only in Hungarian)

1997/1

CSERMELY, Ágnes: Az inflációs célkitűzés rendszere
The Inflation Targeting Framework (available only in Hungarian)

1997/2

VINCZE, János: A stabilizáció hatása az árakra, és az árak és a termelés (értékesítés) közötti összefüggésekre
The Effects of Stabilization on Prices and on Relations Between Prices and Production (Sales) (available only in Hungarian)

1997/3

BARABÁS, Gyula — HAMECZ, István: Tőkebeáramlás, sterilizáció és pénzmennyiség
Capital Inflow, Sterilization and the Quantity of Money

1997/4

ZSOLDOS, István: A lakosság megtakarítási és portfólió döntései Magyarországon 1980-1996
Savings and Portfolio Decisions of Hungarian Households, 1980-1996 (available only in Hungarian)

1997/5

ÁRVAI, Zsófia: A sterilizáció és tőkebeáramlás ökonometriai elemzése
An Econometric Analysis of Capital Inflows and Sterilization (available only in Hungarian)

1997/6

ZSOLDOS, István: A lakosság Divisia-pénz tartási viselkedése Magyarországon
Characteristics of Household Divisia Money in Hungary (available only in Hungarian)

1998/1

ÁRVAI, Zsófia — VINCZE, János: Valuták sebezhetősége: Pénzügyi válságok a '90-es években
Vulnerability of Foreign Currency: Financial Crises in the 1990s (available only in Hungarian)

1998/2

CSAJBÓK, Attila: Zéró-kupon hozamgörbe becslés jegybanki szemszögből
Zero-coupon Yield Curve Estimation from a Central Bank Perspective

1998/3

KOVÁCS, Mihály András - SIMON András: A reálárfolyam összetevői
Components of the Real Exchange Rate in Hungary

1998/4

P.KISS, Gábor: Az államháztartás szerepe Magyarországon
The Role of General Government in Hungary

1998/5

BARABÁS, Gyula — HAMECZ, István — NEMÉNYI, Judit: A költségvetés finanszírozási rendszerének átalakítása és az eladósodás megfékezése; Magyarország tapasztalatai a piacgazdaság átmeneti időszakában
Fiscal Consolidation, Public Debt Containment and Disinflation; Hungary's Experience in Transition

1998/6

JAKAB M., Zoltán — SZAPÁRY, György: A csúszó leértékelés tapasztalatai Magyarországon
Hungary's Experience of the Crawling Peg System (available only in Hungarian)

1998/7

TÓTH, István János — VINCZE János: Magyar vállalatok árképzési gyakorlata
Pricing Behaviour of Hungarian Firms (available only in Hungarian)

1998/8

KOVÁCS, Mihály András: Mit mutatnak? Különféle reálárfolyam-mutatók áttekintése és a magyar gazdaság ár- és költség-versenyképességének értékelése

The Information Content of Real Exchange Rate Indicators (available only in Hungarian)

1998/9

DARVAS, Zsolt: Moderált inflációk csökkentése; Összehasonlító vizsgálat a nyolcvanas-kilencvenes évek dezinflációit kísérő folyamatokról

Moderate Inflation: a Comparative Study (available only in Hungarian)

1998/10

ÁRVAI, Zsófia: A piaci és kereskedelmi banki kamatok közötti transzmisszió 1992 és 1998 között
The Interest Rate Transmission Mechanism between Market and Commercial Bank Rates

1998/11

P. KISS, Gábor: A költségvetés tervezése és a fiskális átláthatóság aktuális problémái
Topical Issues of Fiscal Transparency and Budgeting (available only in Hungarian)

1998/12

JAKAB M., Zoltán: A valutakosár megválasztásának szempontjai Magyarországon
Deriving an Optimal Currency Basket for Hungary (available only in Hungarian)

1999/1

CSERMELY, Ágnes — VINCZE, János: Leverage and foreign ownership in Hungary
Tőkeáttétel és külföldi tulajdon (csak angol nyelven)

1999/2

TÓTH, Áron: Kísérlet a hatékonyság empirikus elemzésére a magyar bankrendszerben
An Empirical Analysis of Efficiency in the Hungarian Banking System (available only in Hungarian)

1999/3

DARVAS, Zsolt — SIMON, András: A növekedés makrogazdasági feltételei; Gazdaságpolitikai alternatívák
Capital Stock and Economic Development in Hungary

1999/4

LIELI, Róbert: Idősormodelleken alapuló inflációs előrejelzések; Egyváltozós módszerek
Inflation Forecasting Based on Series Models. Single-Variable Methods (available only in Hungarian)

1999/5

FERENCZI, Barnabás: A hazai munkaerőpiaci folyamatok Jegybanki szemszögből — Stilizált tények
Labour Market Developments in Hungary from a Central Bank Perspective — Stylized Facts

1999/6

JAKAB M., Zoltán — KOVÁCS, Mihály András: A reálárfolyam-ingadozások főbb meghatározói Magyarországon
Determinants of Real-Exchange Rate Fluctuations in Hungary

1999/7

CSAJBÓK, Attila: Information in T-bill Auction Bid Distributions
Az aukciós kínstárjegybehozamok információs tartalma (csak angol nyelven)

1999/8

BENCZÜR, Péter: A magyar nyugdíjrendszerben rejlő implicit államadósság-állomány változásának becslése
Changes in the Implicit Debt Burden of the Hungarian Social Security System

1999/9

VÍGH-MIKLE, Szabolcs — ZSÁMBOKI, Balázs: A bankrendszer mérlegének denominációs összetétele 1991-1998 között
Denomination Structure of the Balance Sheet of the Hungarian Banking Sector, 1991-1998 (available only in Hungarian)

1999/10

DARVAS, Zsolt — SZAPÁRY, György: A nemzetközi pénzügyi válságok tovaterjedése különböző árfolyamrendszerekben

Financial Contagion under Different Exchange Rate Regimes

1999/11

OSZLAY, András: Elméletek és tények a külföldi működőtőke-befektetésekről
Theories and Facts about Foreign Direct Investment in Hungary (available only in Hungarian)

2000/1

JAKAB M., Zoltán — KOVÁCS, Mihály András — OSZLAY András: Hová tart a külkereskedelmi integráció? Becslések három kelet-közép-európai ország egyensúlyi külkereskedelmére
How Far has Trade Integration Advanced? An Analysis of Actual and Potential Trade by Three Central and Eastern European Countries

2000/2

VALKOVSKY, Sándor — VINCZE, János: Estimates of and Problems with Core Inflation in Hungary
A maginfláció becslése és problémái (csak angol nyelven)

2000/3

VALKOVSZKY, Sándor: A magyar lakáspiac helyzete
Situation of the Hungarian Housing Market (available only in Hungarian)

2000/4

JAKAB M., Zoltán — KOVÁCS, Mihály András — LŐRINCZ Szabolcs: Az export előrejelzése ökonometriai módszerekkel

Forecasting Hungarian Export Volume

2000/5

FERENCZI, Barnabás — VALKOVSZKY, Sándor — VINCZE, János: Mire jó a fogyasztói-ár statisztika?

What are Consumer Price Statistics Good for?

2000/6

ÁRVAI, Zsófia — VINCZE, János: Pénzügyi válságok átmeneti gazdaságokban: modellek és tények (csak angol nyelven)

Financial Crises in Transition Countries: Models and Facts

2000/7

SZAPÁRY, GYÖRGY: Maastricht és az árfolyamrendszer megválasztása az átmeneti gazdaságokban az GMU csatlakozást megelőzően (csak angol nyelven)

Maastricht and the Choice of Exchange Rate Regime in Transition Countries during the Run-Up to GMU

2000/8

ÁRVAI, Zsófia — MENCZEL, Péter: A magyar háztartások megtakarításai 1995 és 2000 között

Savings of Hungarian Households, 1995-2000

2000/9

DARVAS, Zsolt — SIMON, András: A potenciális kibocsátás becslése a gazdaság nyitottságának felhasználásával

Potential Output and Foreign Trade in Small Open Economies

2001/1

SIMON, András — VÁRPALOTAI, Viktor: Eladósodás, kockázat és óvatosság

Optimal Indebtedness of a Small Open Economy with Precautionary Behavior

2001/2

ÁRVAI, Zsófia — TÓTH, István János: Likviditási korlát és fogyasztói türelmetlenség

Liquidity constraints and consumer impatience

2001/3

VALKOVSZKY, Sándor — VINCZE, János: Árszintstabilitás, reálkamat és maginfláció (csak angol nyelven)

On Price Level Stability, Real Interest Rates and Core Inflation

2001/4

VINCZE, János: Financial Stability, Monetary Policy and Integration: Policy Choices for Transition Economies

Pénzügyi stabilitás, monetáris politika, integráció: az átmeneti gazdaságok előtt álló választási lehetőségek (csak angol nyelven)

2001/5

SZAPÁRY, György: Banking Sector Reform in Hungary: Lessons Learned, Current Trends and Prospects

A bankrendszer reformja Magyarországon: tanulságok, aktuális folyamatok és kilátások (csak angol nyelven)

2002/1

TÓTH, István János: Vállalati és lakossági konjunktúra felmérések Magyarországon

Cyclical Surveys of the Hungarian Corporate and Household Sectors (available only in Hungarian)

2002/2

BENCZÜR, Péter: A szuverén kötvényekben rejlő kockázatok azonosítása

Identifying Sovereign Bond Risks (available only in Hungarian)

2002/3

JAKAB M., Zoltán — KOVÁCS Mihály András: Magyarország a NIGEM modellben

Hungary in the NIGEM model

2002/4

BENCZÜR, Péter — SIMON, András — VÁRPALOTAI, Viktor: Dezinflációs számítások kisméretű makromodellel

Disinflation Simulations with a Small Model of an Open Economy (available only in Hungarian)

2002/5

A Balassa-Samuelson hatás becsült mértéke 5 közép-és kelet európai országban (csak angol nyelven)

On the estimated size of the Balassa-Samuelson effect in five Central and Eastern European countries

Edited by Mihály András KOVÁCS

2002/6

GYOMAI, György — VARSÁNYI, Zoltán Máté: Az MNB által használt hozamgörbe-becslő eljárás felülvizsgálata

A Comparison of Yield-curve Fitting Methods for Monetary Policy Purposes in Hungary (available only in Hungarian)

2003/1

BENCZÜR, Péter: A nominálárfolyam viselkedése monetáris rezsimváltás után (csak angol nyelven)

The behavior of the nominal exchange rate at the beginning of disinflations

2003/2

VÁRPALOTAI, Viktor: Numerikus módszer gazdasági adatok visszabecslésére

Numerical Method for Estimating GDP Data for Hungary (available only in Hungarian)

2003/3

VÁRPALOTAI, Viktor: Dezinflációs számítások dezaggregált kibocsátási résekre alapzó makromodellel

Disinflation Simulations with a Disaggregated Output Gap Based Model (available only in Hungarian)

2003/4

VÁRPALOTAI, Viktor: Dezaggregált költségbegyűrűzés-alapú ökonometriai infláció-előrejelző modell

Disaggregated Cost Pass-Through Based Econometric Inflation-Forecasting Model for Hungary

2003/5

JAKAB M., Zoltán — KOVÁCS, Mihály András: Az árfolyam-begyűrés meghatározói: szimulációk a NIGEM modellel (csak angol nyelven)

Explaining the Exchange Rate Pass-Through in Hungary: Simulations with the NIGEM Model

2003/6

VADAS, Gábor: A háztartások megtakarításának és lakásberuházásának modellezése portfólió választási keretben

Modelling households' savings and dwellings investment — a portfolio choice approach

2003/7

PULA, Gábor: Tőkeállomány becslése Magyarországon a PIM módszerrel. Módszertani leírás és eredmények (csak angol nyelven)

Capital Stock estimation in Hungary: A brief description of methodology and results

2003/8

DARVAS, Zsolt — VADAS, Gábor: *Univariate Potential Output Estimations for Hungary*

Potenciális kibocsátás becslése Magyarországon egyváltozós módszerekkel (csak angol nyelven)

2003/9

BENCZÜR, Péter: Nominális sokkok átmeneti reálhatása egy kétszektoros növekedési modellben

Real Effects of Nominal Shocks: a 2-sector Dynamic Model with Slow Capital Adjustment and Money-in-the-utility

2003/10

MÉRŐ, Katalin — ENDRÉSZ VALENTINYI, Marianna: A külföldi bankok szerepe öt közép-kelet-európai országban (csak angol nyelven)

The Role of Foreign Banks in Five Central and Eastern European Countries

2003/11

VILÁGI, Balázs: Az optimális euró konverziós ráta meghatározása egy sztochasztikus dinamikus általános egyensúlyi

The Optimal Euro Conversion Rate in a Stochastic Dynamic General Equilibrium Model

2003/12

MÓRÉ, Csaba — NAGY, Márton: A piaci struktúra hatása a bankok teljesítményére: empirikus vizsgálat Közép-Kelet Európára

Relationship between Market Structure and Bank Performance: Empirical Evidence for Central and Eastern Europe (available only in Hungarian)

2003/13

BENCZÜR, Péter — SIMON, András — VÁRPALOTAI, Viktor: Fiskális makropolitika és a növekedés elemzése kalibrált modellel

A Calibrated Model of Growth and Intertemporal Consumption Allocation in a Catching-up Country

2004/1

DARVAS, Zsolt — SZAPÁRY, György: Konjunktúraciklusok együttmozgása a régi és új EU-tagországokban

Business Cycle Synchronization in the Enlarged EU: Comovements in the New and Old Members

2004/2

NASZÓDI, Anna: A sávmódosítások árfolyamhatásának vizsgálata opciós modell keretei között

Target zone rearrangements and exchange rate behavior in an option-based model

2004/3

TARJÁNI, Hajnalka: A szakképzettséget felértékelő technológiai változás hatásának becslése a termelési tényezők keresletrugalmasságára Magyarországon (csak angol nyelven)

Estimating the Impact of SBTC on Input Demand Elasticities in Hungary

2004/4

ORBÁN, Gábor — SZAPÁRY, György: A Stabilitási és Növekedési Egyezmény az új tagállamok szemszögéből

The Stability and Growth Pact from the Perspective of New Member States

2004/5

VILÁGI, Balázs: Duális infláció és reálárfolyam a nyitott gazdaságok új makroökonómiaja megközelítésében

Dual inflation and real exchange rate in new open economy macroeconomics

2004/6

Florin O. BILBIE — Roland STRAUB: Fiskális Politika, Üzleti Ciklusok és Munkaerőpiaci Fluktuáció (csak angol nyelven)

Fiscal Policy, Business Cycles and Labor-Market Fluctuations

2004/7

VADAS Gábor — P. KISS Gábor: Légy résen – az államháztartási egyenleg ciklikus buktatói

Mind The Gap – Watch the Ways Cyclical Adjustment of the Budget Balance

2004/8

HORVÁTH, Csilla — KREKÓ, Judit — NASZÓDI, Anna: Kamat-átgyűrés Magyarországon

Interest rate pass-through in Hungary

2004/9

MÓRÉ, Csaba — NAGY, Márton: Verseny a Magyar bankpiacon

Competition on the Hungarian Banking Market (available only in Hungarian)

2004/10

LUBLÓY, Ágnes: A magyar bankközi piac rendszerkockázati vonatkozásai

Systemic Risk Implications of the Hungarian Interbank Market (available only in Hungarian)

2004/11

VALENTINYINÉ, ENDRÉSZ Marianna: Strukturális törések és pénzügyi kockázatkezelés (csak angol nyelven)

Structural Breaks and financial risk management

2004/12

KÁTAY, Gábor — WOLF, Zoltán: Beruházások, tőkeköltség és monetáris transzmisszió Magyarországon
(csak angol nyelven)

Investment Behavior, User Cost and Monetary Policy Transmission - the Case of Hungary