

Evers, Hans-Dieter; Genschick, Sven; Schraven, Benjamin

Working Paper

Constructing epistemic landscapes: Methods of GIS-based mapping

ZEF Working Paper Series, No. 44

Provided in Cooperation with:

Zentrum für Entwicklungsforschung / Center for Development Research (ZEF), University of Bonn

Suggested Citation: Evers, Hans-Dieter; Genschick, Sven; Schraven, Benjamin (2009) : Constructing epistemic landscapes: Methods of GIS-based mapping, ZEF Working Paper Series, No. 44, University of Bonn, Center for Development Research (ZEF), Bonn

This Version is available at:

<https://hdl.handle.net/10419/88357>

Standard-Nutzungsbedingungen:

Die Dokumente auf EconStor dürfen zu eigenen wissenschaftlichen Zwecken und zum Privatgebrauch gespeichert und kopiert werden.

Sie dürfen die Dokumente nicht für öffentliche oder kommerzielle Zwecke vervielfältigen, öffentlich ausstellen, öffentlich zugänglich machen, vertreiben oder anderweitig nutzen.

Sofern die Verfasser die Dokumente unter Open-Content-Lizenzen (insbesondere CC-Lizenzen) zur Verfügung gestellt haben sollten, gelten abweichend von diesen Nutzungsbedingungen die in der dort genannten Lizenz gewährten Nutzungsrechte.

Terms of use:

Documents in EconStor may be saved and copied for your personal and scholarly purposes.

You are not to copy documents for public or commercial purposes, to exhibit the documents publicly, to make them publicly available on the internet, or to distribute or otherwise use the documents in public.

If the documents have been made available under an Open Content Licence (especially Creative Commons Licences), you may exercise further usage rights as specified in the indicated licence.

ZEF

Bonn 2009

Working
Paper
Series

44

Center for Development
Research

Department of
Political and
Cultural Change

Hans-Dieter Evers, Sven Genschick,
Benjamin Schraven

Constructing Epistemic Landscapes:

Methods of GIS-Based Mapping


universität**bonn**



Zentrum für Entwicklungsforschung
Center for Development Research

ISSN 1864-6638

ZEF Working Paper Series, ISSN 1864-6638
Department of Political and Cultural Change
Center for Development Research, University of Bonn
Editors: H.-D. Evers, Solvay Gerke, Peter Mollinga, Conrad Schetter

Authors' address

Prof. Dr. Hans Dieter Evers
Center for Development Research (ZEF), University of Bonn,
Walter-Flex-Str. 3
53113 Bonn, Germany
Tel. 0049 (0)228-73 4909: Fax 0228-731972
E-mail: hdevers@uni-bonn.de
www.zef.de

Benjamin Schraven
Center for Development Research (ZEF), University of Bonn,
Walter-Flex-Str. 3
53113 Bonn, Germany
Tel. 0049 (0)228-73 1824: Fax 0228-731972
E-mail: schraven@uni-bonn.de
www.zef.de

Sven Genschick
Center for Development Research (ZEF), University of Bonn,
Walter-Flex-Str. 3
53113 Bonn, Germany
Tel. 0049 (0)228-73 4919: Fax 0228-731972
E-mail: svengen@uni-bonn.de
www.zef.de

Constructing Epistemic Landscapes:

Methods of GIS-Based Mapping

Hans-Dieter Evers, Sven Genschick, Benjamin Schraven

Table of Contents

| | |
|--|----|
| 1. Introduction: Epistemic Landscapes and Knowledge Maps | 2 |
| 2. Examples of Thematic Maps and Landscapes | 4 |
| 2.1 Distribution of Knowledge Producing Organisations | 4 |
| 2.2 Distribution of Knowledge Assets | 7 |
| 2.3 Distribution of Students in 3D | 7 |
| 3. The Spatial Distribution of Knowledge Attributes | 9 |
| 3.1 GIS: linkage of space and content | 9 |
| 3.2 Data Input Formats | 9 |
| 3.3 Spatial Data Representation | 10 |
| 3.4 Problems of Using the Third Dimension | 10 |
| 4. Results: Knowledge Maps or Epistemic Landscapes | 10 |
| 4.1 Knowledge Maps as Analytical Tools | 10 |
| 4.2 Statistical Measures of Knowledge Clusters | 11 |
| 5. Conclusion: The Use of Epistemic Landscapes | 16 |
| References | 17 |

Abstract

The construction of knowledge maps, demonstrated in this paper, is designed to show the epistemic landscape of cities, countries or regions. Knowledge assets, knowledge producing and disseminating organisations are referenced to spatial objects and integrated into GIS. They are further represented in thematic maps and in 3-D perspective graphs. Special attention is given to mapping and measuring knowledge clusters. Statistical procedures to measure the degree of knowledge clustering are discussed and ways are indicated to compare and determine the emergence of knowledge clusters. We conclude that the construction of knowledge maps showing the complexity of epistemic landscapes will enhance the chances of government agencies, companies and civic organisations to understand and use knowledge for development. This paper is in the first place meant as guideline for the related analysis.

Key Words

Knowledge and development, knowledge maps, epistemic landscapes, knowledge clusters, Geographic Information System (GIS)

1. Introduction: Epistemic Landscapes and Knowledge Maps

The World Development Report of 1999 has drawn attention to the fact that knowledge is not evenly distributed within countries, regions or urban areas. This has been described as the existence of a “knowledge gap” or, in relation to the ICT backbone of a knowledge system, as the “digital divide”. It is then proposed to close these gaps by appropriate development policies. So far most studies have tried to show the narrowing or widening of knowledge gaps by using indicators, as provided by the KAM (knowledge assessment methodology) data base of the World Bank Institute, like number of researchers per million population, investment in R&D (research and development) as percentage of GDP and other indicators. In most cases these data have measured knowledge gaps between countries or regions, without paying closer attention to the geographical distribution of knowledge assets as well as the existence of knowledge gaps within countries, provinces or cities. We intend to close this particular “knowledge gap” by providing a methodology to show and measure the geographical distribution of knowledge related assets, people or organizations, which we have referred to as “epistemic landscapes”. This paper is thus designed to discuss the methodology of creating knowledge maps and analyzing epistemic landscapes. Data and maps from ongoing research in the Mekong Delta in Vietnam¹ are used to illustrate various methodological issues and to show examples of maps and graphs. As discussed elsewhere (Evers 2008), knowledge landscapes are formed by knowledge clusters, knowledge hubs and the distribution of knowledge assets. Following the work of Porter on the competitive advantage of nations (Porter 2003; Porter 1990) there has been an upsurge of research and data collection on industrial clusters (Sölvell 2009). These studies usually assume that modern industrial clusters are centres of innovation and therefore desirable. Our concept of knowledge landscapes is less value laden and intends to show the spatial distribution of knowledge. Which type of knowledge landscape optimizes intellectual or industrial output remains a question to be decided by further empirical research.

We define epistemic landscapes in a geographical sense, i.e. we refer to the spatial distribution of knowledge assets within a predefined region (Evers 2008). The concept is not yet standard social science terminology. We are using the term “epistemic” in line with “epistemic culture”, the culture of knowledge production, as coined by Karin Knorr-Cetina (Knorr-Cetina 1999). The term “epistemic” has been used in different contexts. One line of argument refers back to Bacon and 18th-century ‘encyclopaedism’ and defines an epistemic landscape as depicting a synthesis of knowledge (Wernick 2006). In Weisberg and Muldoon’s study a single epistemic landscape corresponds to the research topic that engages a group of scientists. Agent based modelling with NetLogo software is used to model the changing epistemic landscape according to research strategies of participating scientists (Weisberg and Muldoon 2007). Conceptually distance rather than Euclidean distance is shown in graphs, similar to those used to illustrate social networks. In our study we follow a different path and focus on the development strategies of governments, strategic groups, firms, research institutes and their success in shaping the epistemic landscape of a region. The allocation of human and financial resources creates knowledge assets which are geographically distributed and can be measured, mapped and made to depict the contours of an epistemic landscape.

Epistemic landscapes develop over long periods of time. They are seldom shaped by individual actors, but more often by the collective action of strategic groups (Evers and Benedikter 2009; Evers and Gerke 2009). Firms connected by a common interest to capitalize on the competitive advantage of clustering have an impact on epistemic landscapes through their location decisions. More over government strategies to develop knowledge-based societies and economies have often been decisive in shaping epistemic landscapes. Relevant development policies have been assessed in detail elsewhere for Malaysia and Indonesia (Evers 2003), Singapore and Germany (Hornidge 2007). In fact, developing regions of high-

¹ This refers to ongoing research on knowledge management and knowledge governance in the water sector of the Mekong Delta (WISDOM project <http://www.zef.de/1052.0.html>), carried out jointly by the Center for Development Research (ZEF), University of Bonn, the Southern Institute of Social Sciences, HCMC and The Mekong Development Research Institute of Can Tho University. Useful comments by Steffen Gebhardt, DLR, are gratefully acknowledged.

tech industries, clusters or knowledge hubs are, by now, standard practice in many regional planning departments around the world.

In order to visualize and analyze epistemic landscape we have developed knowledge maps². A knowledge map is the cartographic representation of captured information and relationships which enables the efficient communication and learning of knowledge by observers with differing backgrounds at multiple levels of detail (Meusburger 2000). The individual items of knowledge included in such a map can be text, stories, graphics, models or numbers. Maps can also serve as links to more detailed knowledge sources ranging from text-based groupware documents to database schemas as well as pointers to implicit knowledge (such as experts).

The creation of knowledge maps is by now a standard tool of knowledge management in organizations. "In their simplest forms, knowledge maps serve as guides to the type of knowledge held both inside and outside the organization. They serve as locators of that knowledge, and locators of people holding particular knowledge. They give a visual overview of the knowledge available to the organization" (Foles 1998:14).

The term „mapping“ is, perhaps unfortunately, often used in the sense of „listing“, i.e. creating a list of items, like organisations, persons or assets. "Yellow pages" listing names of persons or firms and their knowledge assets are (often used) to make knowledge easily accessible in large organizations and bureaucracies. In this paper "mapping" is, however, used in a cartographic sense. A list of knowledge producing organizations, i.e. research institutes and universities in Ho Chi Minh City and the Mekong Delta³, lists next to name and function also the address or the geographical coordinates. Furthermore the geographical distance to other organisations is captured.

Figure 1: Example of Knowledge Mapping / Listing

| Research Organizations in the Mekong Delta | | | | |
|--|--|-----------|------------|----------|
| No. | English Translation of organization | Latitude | Longitude | Function |
| 1 | Cuu Long Delta Rice Research Institute | 10.104799 | 105.620077 | wr |
| 2 | Southern Fruit Research Institute | 10.406300 | 106.122190 | wr |
| 3 | Biotechnology Research and Development Institute | 10.028193 | 105.770270 | wr |
| 4 | Mekong Delta Development Research Institute | 10.030410 | 105.766008 | wr |
| 5 | Hoa An Bio-Diversity - Application - Research Centre | 9.869289 | 105.774001 | wr |
| 6 | Tri Tue Viet Humane Resource Dev. & Training Centre | 10.034732 | 105.779015 | n |
| 7 | Computer, Science & Technology Centre | 10.251991 | 105.971513 | n |
| 8 | Research Centre for Rural Development | 10.037803 | 105.786273 | wr |
| 9 | Research Centre for Social Sciences and Humanity | 10.037803 | 105.786273 | n |
| 10 | Centre for Science Application and Technology Transfer | 9.935052 | 106.342977 | n |
| 11 | Research Centre for Agriculture and Rural Development | 10.354048 | 106.371293 | wr |

Note: wr=water related research; n= no water related research

These lists can easily be used to build thematic maps. These maps show the distribution of data in geographical space. We shall, however, concentrate on one particular type of maps, showing the "clustering" of organisations. Maps of this kind are used in geographical or sociological research or created for use in information systems like the WISDOM information system, and for regional planning. Cluster research goes back to industrial location theory and assumes that proximity reduces transaction cost and spurs innovation. Data banks, like the European Cluster Observatory (<http://www.clusterobservatory.eu>) or the Vietnamese Provincial Competitive Index

² All maps in this paper have been designed and produced by the authors on the basis of data generated within the WISDOM Project.

³ This list was compiled by Tatjana Bauer in 2008-09 in the course of her doctoral thesis research within the WISDOM project.

(<http://www.pcvietnam.org>), are designed to identify industrial clusters within nations. Our approach looks at knowledge clusters within cities, provinces and regions and uses the exact geographical location of organisations as a basis for analysis. Please note that this paper is designed as guideline for the analysis of knowledge clusters.

2. Examples of Thematic Maps and Landscapes

2.1 Distribution of Knowledge Producing Organisations

A map example is the “distribution of organisations” in Ho Chi Minh City (Evers and Bauer 2009). In this case we have chosen to work with data⁴ that have been geo-referenced via GPS and Google Earth.

After importing data to the GIS (geographical information system), they can be used to create symbols in a simple map. A visual examination of the map shows the unequal geographical distribution of organizations, but only with the assistance of statistical calculations the spatial patterns can be further analyzed and compared.

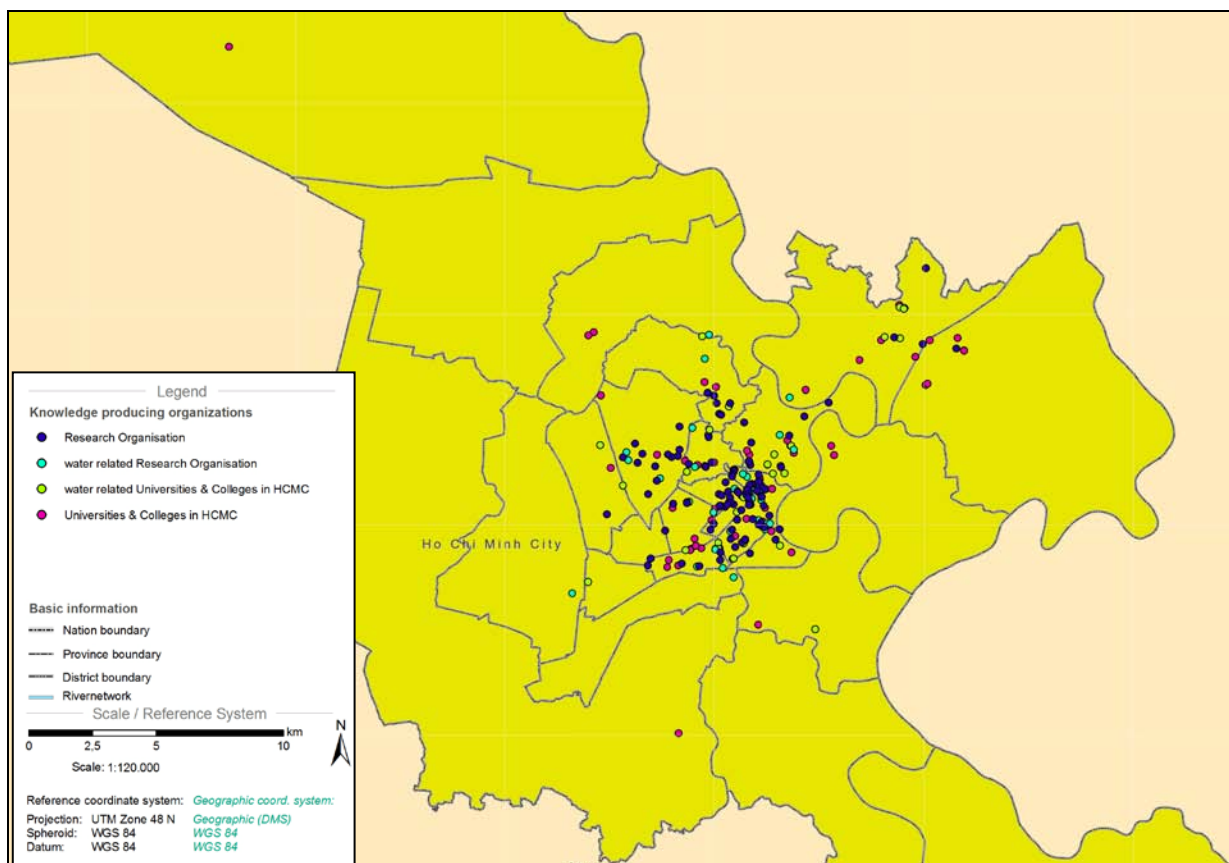


Figure 2: Knowledge producing organisations within the district boundaries of Ho Chi Minh City.

By adding additional variables the existence of knowledge clusters can be analysed. As an example we distinguish between water-related and non-water-related research institutions. By this we indicate, which institutes are engaged in research on the water sector. The spatial cluster analysis will give an indication of agglomeration tendencies. Such an analysis makes sense if we follow the assumption that clusters of research institutes and knowledge-based firms are more productive. The analysis can be

⁴ This data was compiled by Tatjana Bauer in 2008-09 in the course of her doctoral thesis research within the WISDOM project

further enhanced by adding qualifying variables like for example “staff numbers”, “publications” and “year of establishment” etc.

In a first approach we used all “water-related universities and colleges” to analyse their straight-distance (Euclidean) to each other. The result is a “cluster map” (Figure 3) where each point is surrounded by a radius of 2000 meters. The map finally represents the quantity of overlaps of radii by a simple classification. Thus the differences between high and low-density areas can be worked out very well. A more detailed approach of clustering spatial data is given in the following section.

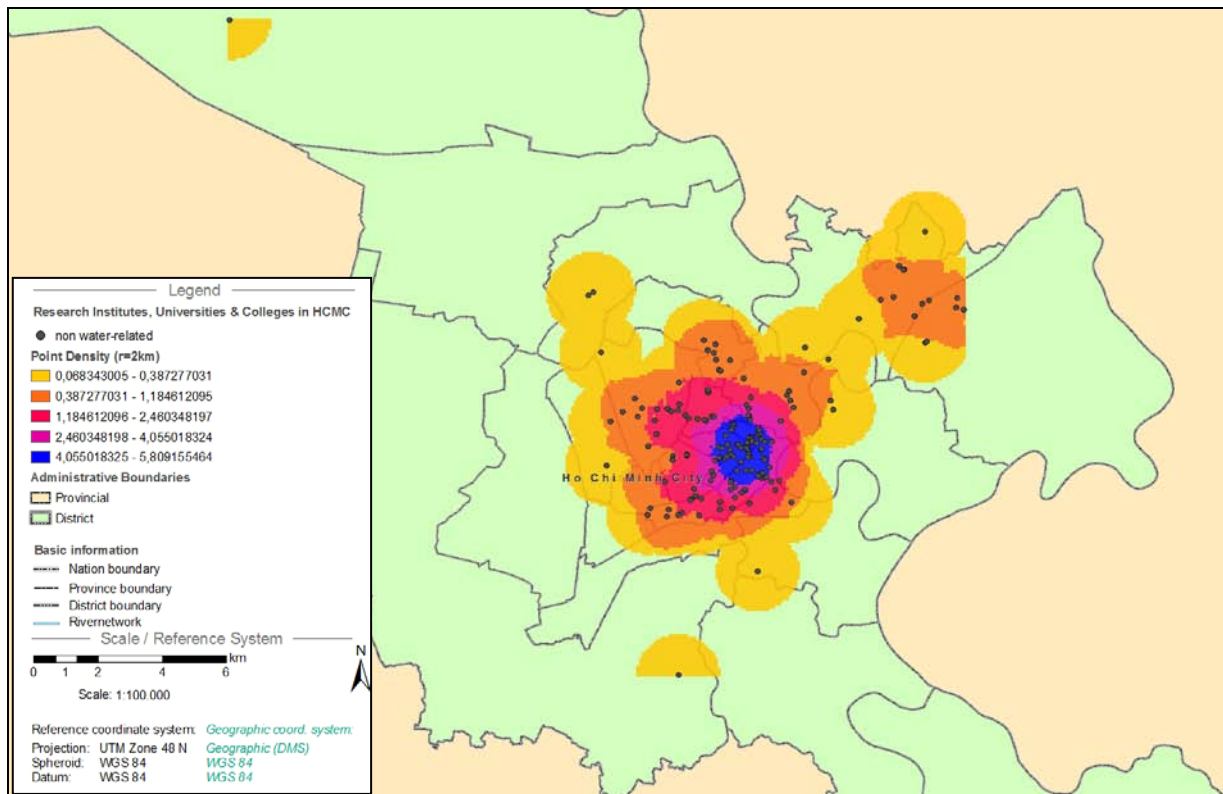


Figure 3: map of water-related Universities and Colleges in HCMC.

For a comparison of the effect of government strategies on cluster formation, maps of different regions can be visually examined. For a more sophisticated analysis statistical measures have to be employed which we are going to discuss below. The following map (figure 4) shows the low degree of organisational knowledge clustering in the Mekong Delta of Vietnam.

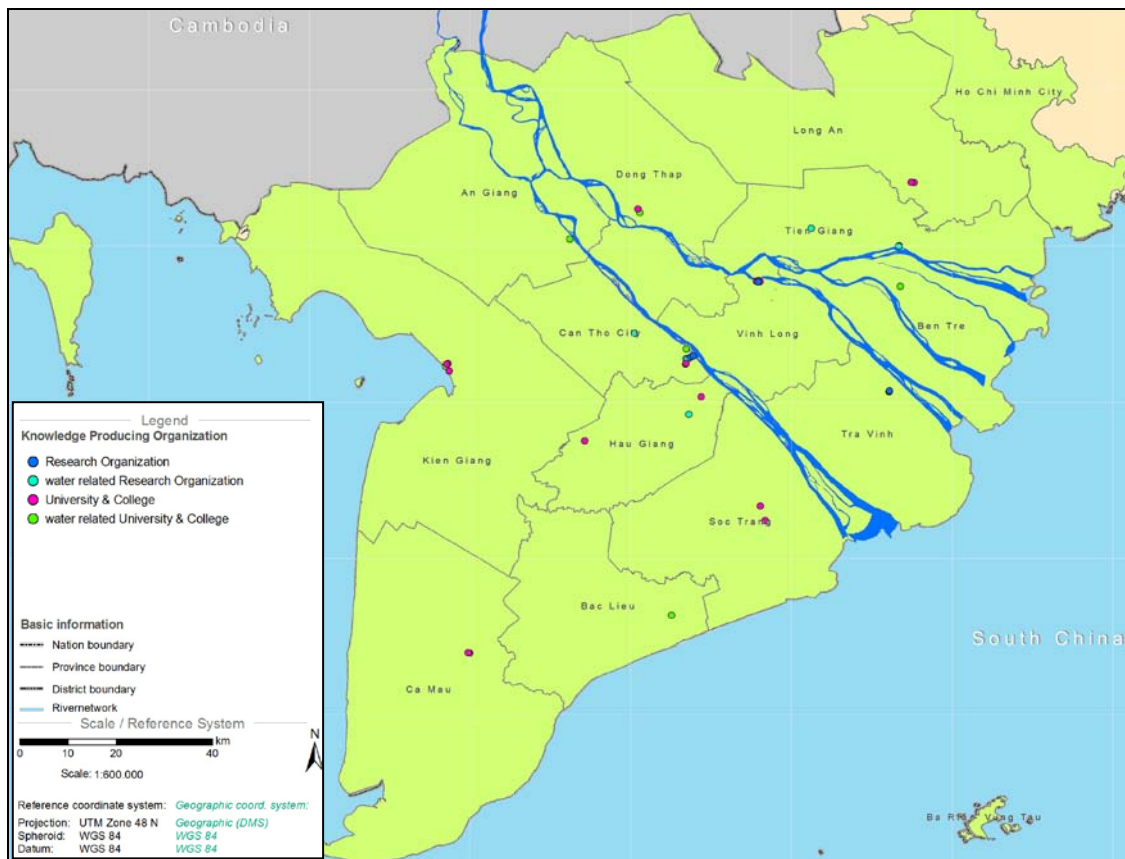


Figure 4: Mapping of knowledge producing organisations within Mekong Delta Provinces.

2.2 Distribution of Knowledge Assets

The third example of a map (Figure 5) uses the distribution of Can Tho University (CTU) students within the Mekong Delta provinces according to their home province between 1995 and 2008 as an indicator for knowledge assets. For Vietnam this data is state-wide available. Besides an absolute distribution of students, the map contains a gender classification. This separation is displayed by pie charts for each province.

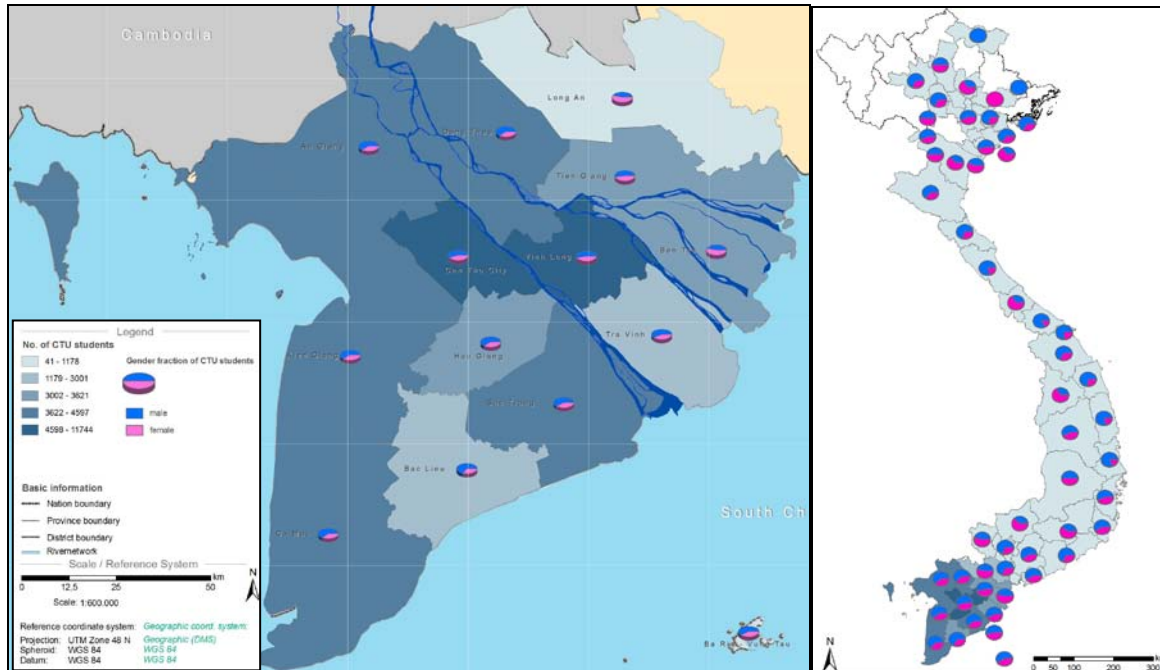


Figure 5: CTU students according to their home provinces, regional and state-wide.

Finally this map offers a predication about the degree of centralization and surplus capacity of Can Tho University. Here it is possible to distinguish if the university either has a regional or a national relevance. As shown in graph no 4 the university tends to the latter assumption.

In the long run more knowledge assets could be added or combined so that we are able to come to a more comprehensive conclusion about the distribution of “knowledge gaps” and “knowledge hubs”.

2.3 Distribution of Students in 3D

In the terminology of knowledge management we often talk about “landscapes”, “knowledge gaps” and “knowledge hubs”. All these terms are metaphorically touched.

Via the illustration of data by maps, we are able to display those metaphoric terms as graphical representations. For this purpose we create an artificial landscape in a geographical sense in which the surface characteristics are determined by the respective data set. So, the altitude of a given landscape element will be based on the quantity of a certain variable or attribute.

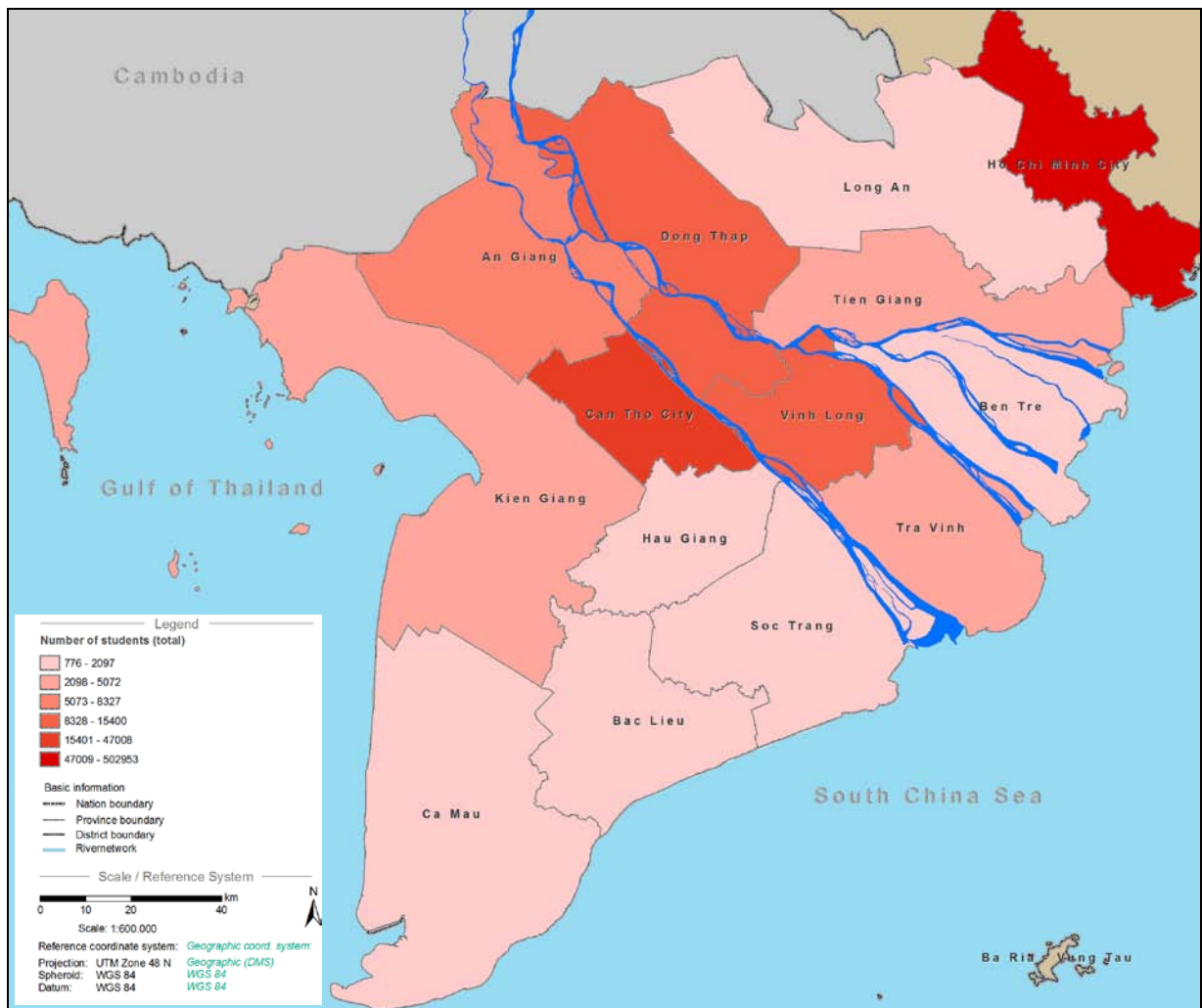
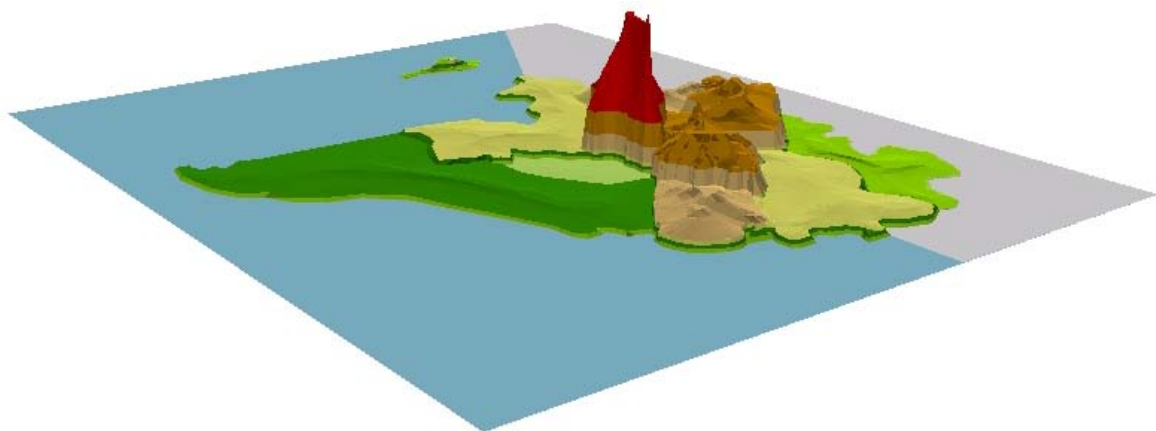


Figure 6: Distribution of students, Mekong Delta and Ho Chi Minh City; data © General Statistics Office Vietnam, 2007

In our example we choose to represent the altitude of the landscape by the number of students. Students, graduated from a university or college, are here interpreted as knowledge assets. By doing so, data peaks became (knowledge-) hubs and data downs became (knowledge-) gaps.



Finally it must be mentioned that there is little additional information benefit by using the third dimension, but it is a vivid representation of data that enhances the understanding of

complex issues. Three dimensional representations are therefore increasingly used in advertising and in science centres like the recently opened knowledge cluster Fusionopolis in Singapore. In a later section we shall discuss some problems of creating three-dimensional landscapes in greater detail.

3. The Spatial Distribution of Knowledge Attributes

3.1 GIS: linkage of space and content

Attributes of data can be personal, institutional or regional and national (etc.), so that data can always have a geo-reference. The linkage between spatial attributes and content makes it possible to map the data.

Working with a GIS means first of all to start the management of geo-data. This includes the storage, the transformation, the structuring, and the creation of new geo-data, which attributes, properties and ranges of values have to be defined as well.

Before creating a map it is important to always check whether one can use an already existing map instead. Once that has been done the data gathering comes into play. For this, a determination between primary, i.e. self-generated, and secondary, i.e. available data, is of importance. Even though the process of gathering primary data usually is very time-consuming, it is more detailed and represents the attributes with much contextual depth. Secondary data on the other hand are easier to find and at lower prices to get, even though it often lacks contextual quality. Since the gathered data alone do not represent any kind of information yet, the gathered data set then will have to be transformed into a meaningful map by using knowledge and transformation rules.

Because of the vast amount of information consisting in the primary as well as in the secondary data set, one will have to fulfil a reduction of complexity, in order to create the aspired map. This can also include building data classes (before or after collecting data).

3.2 Data Input Formats

With the exception of the geo-reference, there are almost no other restrictions of data input. Geo-reference is the strongest requirement and standard for mapping any kind of information within a GIS!

The scale levels of the attributes can vary. Their content may contain nominal, ordinal, interval or ratio scaled information. Furthermore data can be raised on different spatial scales.

More examples of different scaled geo-references are: coordinates, a city, a district, a province, a state, a continent, (etc.). The different scaled geo-references are arranged in a hierarchical manner. An up- and downscaling of data depends on their resolution.

Another important guideline is the usage of a coherent geographic and/ or reference projection. If various shape files within a map project are of different projection, their visual display could be incorrect.

In case of the simple purpose of adding additional information to already existing geo-objects there are possibilities of importing data without a manual entry. For example, to merge a table with data (i.e.: excel, dBase) to already available attributes, one just has to set up identical table structures (keys). This functionality increases the collection of data by saving a lot of time.

Another useful application is depicted by the import of GPS-coordinates. For instance ArcMap⁵ offers such a feature for an easy and automatic integration and display in shape-file⁶ format. By opening and

⁵ ArcMap is component of ESRI's ArcGIS. It is the central application for the creation of maps. For this approach ArcGIS 9.2 was used.

⁶ A shapefile stores nontopological geometry and attribute information for the spatial features in a data set. It consists of a main file, an index file, and a dBASE table. (ESRI 1997)

editing the shapefile's attribute table again a quick alteration of numeric and/or textual data can be done with ease.

3.3 Spatial Data Representation

As stated above, the representation of data is realised by points, lines, areas or volumes. Furthermore table- and text-based data can be added. For a more detailed illustration classification of data should be undertaken. By doing so, the core statements of the data set move into focus and more precise conclusions can be drawn.

Alongside the representation of data via "simple" or "nested" queries, which are characterized as direct requests without modifying data values by showing single or logical combined attributes, the data also can be manipulated by creating new geo-data from the existing geometrics.

For the last mentioned approach, the cluster analysis of our water- or non-water related organizations can be used as an example.

3.4 Problems of Using the Third Dimension

For the creation of the three-dimensional map (section 3.4 above) we used data, which have been collected on a provincial scale, such as the number of students in Can Tho City. Obviously students are not distributed equally across provinces, but are concentrated in certain heavily populated areas. In fact we do not have any information about how students are distributed within this spatial reference unit.

In our map it is obvious that we carried out a more or less random interpolation within this given reference. This problem is common to most thematic maps, but from the standpoint of statistics this approach is, strictly speaking wrong because we did an assessment without any references of how the data could be distributed in space. In the long run we hope to find a solution, which enable us to interpolate the data within the spatial reference of collected data. The question still remains: How to handle the space, for which data are not available?

4. Results: Knowledge Maps or Epistemic Landscapes

4.1 Knowledge Maps as Analytical Tools

So far we have shown how knowledge related data sets can be visualized in thematic maps. They have one thing in common: they all use space or distance as an additional variable or, to put it differently, to geo-reference data on knowledge production, knowledge assets and knowledge flows. Data sets and maps all represent aspects of what we have termed "epistemic landscapes". The term "map" is used in the strict literal geographical sense. Our knowledge maps represent real geographical knowledge landscapes. Knowledge maps offer broad information about the spatial distribution of knowledge assets and knowledge production.

So far we have used knowledge maps mainly to study the process of clustering. The underlying hypothesis is, as explained elsewhere (Evers 2008), that a cluster of firms and organisations producing, transmitting or using knowledge enhances innovation and productivity and thus provides a competitive advantage over other regions that show a lower degree of knowledge clustering. Knowledge maps visualise the degree of clustering. We have tried to enhance the "visibility" of knowledge by using three-dimensional maps or even animations. The didactic value appears to be evident but the analysis has to go beyond visual impressions. We have therefore tried to use various statistical tools to measure the degree of clustering, or in other words to test the quality of epistemic landscapes and asses how they may contribute to social and economic development.

4.2 Statistical Measures of Knowledge Clusters

An adequate indicator for the spatial density of a cluster will have to be developed to describe the “quality” of a knowledge cluster. In the following some selected approaches shall be introduced. The density measures often used in the natural sciences (e.g. the stand density index SDI used often in forestry (Reineke 1933), which basically work according to the function “elements per unit of area/space” are not really applicable for the measurement of spatial density of knowledge clusters. In the case of knowledge clusters, it obviously makes much more sense to use the internal distances within a cluster for the construction of a density measure.

One imaginable and very precise approach of doing this is based on the Euclidean or linear distance of each knowledge-producing organization to any other knowledge producing organizations within a knowledge cluster. Therefore, a data matrix with all coordinates of the involved organizations on both the x-axis and the y-axis has to be generated. In the matrix the Euclidean distances have to be calculated whereas the distances of the organizations to themselves have to be excluded.

Table 2 Example of a data matrix for the calculation of the Euclidian distances between selected knowledge producing organizations of a knowledge cluster

| | | Name of institute | An Giang Universitas | Bac Lieu University | Can Tho University | Dong Thap University | ... |
|----------------------|----------|-------------------|----------------------|---------------------|--------------------|----------------------|-----|
| | | Latitude | 547768 | 579406 | 584535 | 568901 | ... |
| Name of institute | Latitude | Longitude | 1147099 | 1026762 | 1108858 | 1156715 | ... |
| An Giang Universitas | 547768 | 1147099 | | 124427 | 53049 | 23218 | ... |
| Bac Lieu University | 579406 | 1026762 | 124427 | | 82256 | 130377 | ... |
| Can Tho University | 584535 | 1108858 | 53049 | 82256 | | 50346 | ... |
| Dong Thap University | 568901 | 1156715 | 23218 | 130377 | 50346 | | ... |
| ... | ... | ... | ... | ... | ... | ... | ... |

Table 2 shows the data matrix that needs to be constructed for the determination of all Euclidean distance between the organizations of a knowledge cluster. The total number of distance values, which is generated by the matrix, is always determined by the equation n^2-n , whereas n is the total number of organizations. With the generated values a new variable can be constructed whereby all in all one variable per knowledge producing unit are produced. These variables contain all distances of the respective unit to all other units of the knowledge cluster. With the mean value (and additionally the standard deviation, standard deviation of the mean, variance, range etc.) a coefficients can be calculated to measure the spatial density of a knowledge cluster. The disadvantage of this approach is that there is a high vulnerability towards outliers and extreme cases. Practically, this means that if a knowledge cluster has one organization, which is located in a great distance to the rest of the cluster, this cluster will have a very high value, especially for its standard deviation even if the rest of the cluster may be located very close together.

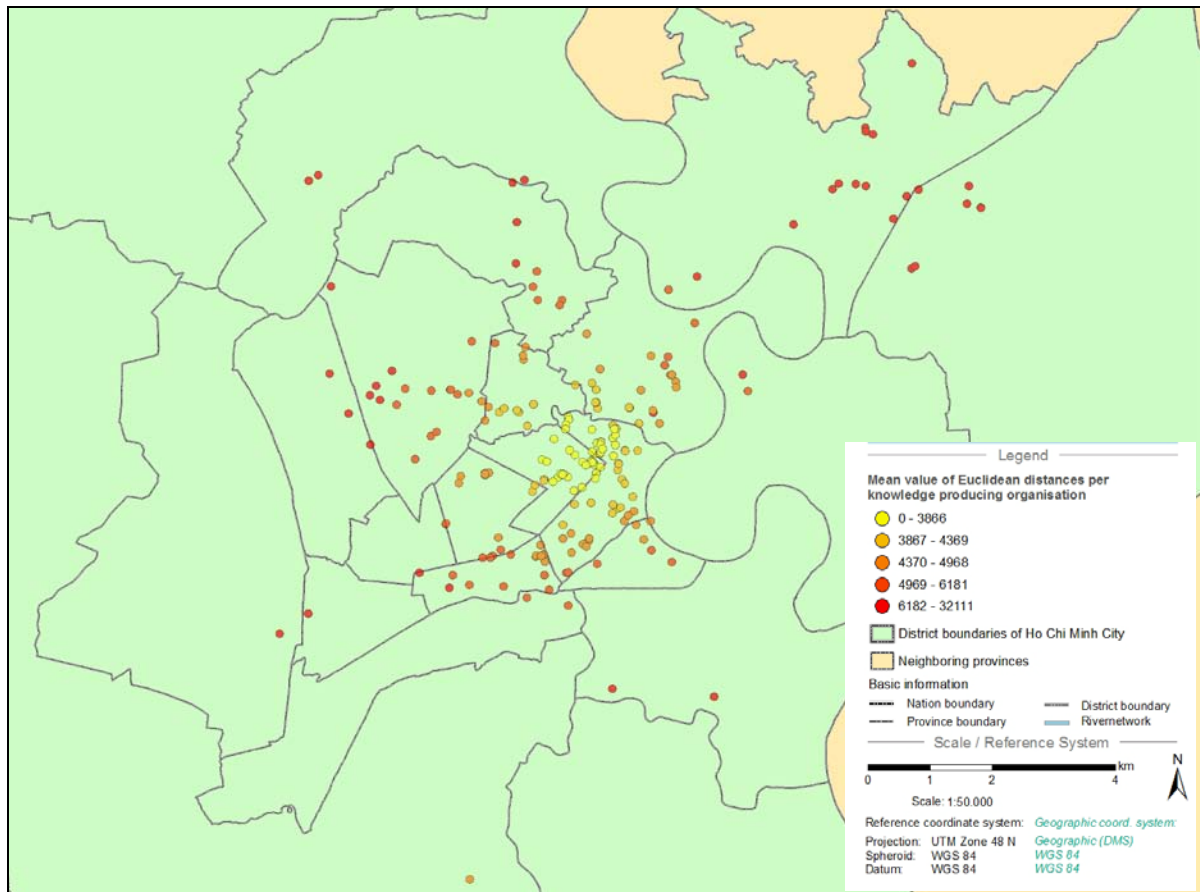


Figure 7: Spatial distribution of knowledge producing organisations in Ho Chi Minh

If we take the example of research institutions in Ho Chi Minh City ($n=218$) and the Mekong Delta ($n=42$), the average distance value for the first mentioned is 66.7 kilometres and for the last mentioned 5.6 kilometres with standard deviations of the mean of 5.6 kilometres and 0.37 kilometres. Principally problematic with this approach is the relative sensitivity for outliers and extreme cases. This is not really true for the example: the Ho Chi Minh City cluster has one institution, which is located in some north-western distance to the rest. But this outlier has only some (soft) impact on the density score for this cluster since without this institution the cluster would have a density score of 5.4 kilometres in average.

To totally overcome this potential bias caused by outliers another third approach, which can be called the "neighbourhood per radius approach", can be applied. For this method the same data matrix for the calculation of the Euclidean distances between the organizations of a knowledge cluster has to be generated. The next step is to check all the distances whether they are bigger or smaller than a pre-defined distance value (e.g. 1.5 km, 2 km, etc.). If they are smaller, the distance value has to be transformed into the value 1, if not it has to be transformed into the value 0 (see table 3 for the Ho Chi Minh City cluster). If then the sum per column or per row is counted, the outcome is the number of neighbouring organizations within the pre-defined radius for every organization of the cluster. The predefined distance is not totally arbitrary, as an ideal distance for face-face communication can be assumed or calculated. Network data could be a possible source for this calculation, as we shall argue below. With the statistical measures mentioned above coefficients measuring the spatial density of the respective knowledge cluster can be constructed (for instance the average number of neighbours per institute or the standard deviation of neighbours per institute).

Table 3 Example for the “neighbourhood per radius approach” for the value of 2 kilometres

| Name of institute | | | Academy of Politics - 2nd Base | Posts and Telecommunications Institute of Technology | Vietnam Aviation Academy | National Academy of Public Administration - HCMC Branch | ... |
|---|----------|-----------|--------------------------------|--|--------------------------|---|-----|
| | | Latitude | 695393 | 685946 | 682968 | 683799 | ... |
| Name of institute | Latitude | Longitude | 1199990 | 1193259 | 1193970 | 1191896 | ... |
| Academy of Politics - 2nd Base | 695393 | 1199990 | | 0 | 1 | 0 | ... |
| Posts and Telecommunications Institute of Technology | 685946 | 1193259 | 0 | | 0 | 0 | ... |
| Vietnam Aviation Academy | 682968 | 1193970 | 1 | 0 | | 0 | |
| National Academy of Public Administration - HCMC Branch | 683799 | 1191896 | 0 | 0 | 0 | | ... |
| ... | ... | ... | ... | ... | ... | ... | ... |

Contrary to the first described approach, the higher these values are the denser is the cluster spatially. The disadvantage of this approach is that the value for the respective radius has to be chosen purposely in order to get sound results. The radius size is severely determining the results for the density score what can easily be demonstrated by taking the example of the non-water research cluster of the Mekong Delta: the score value (=the mean number of neighbours) is 0.04 with a radius of $r=1$ kilometre and is 2.6 for $r=2$ kilometres (for Ho Chi Minh City the value changes from 13.6 for $r=1$ kilometre to 39.7 for $r=2$ kilometres). A solution for that could be – if existing - the analysis of respective social network data, which for instance indicate how often a member of one knowledge producing unit communicates face to face with a member of another unit. Based on that, a critical maximum distance for direct face to face communication within a knowledge cluster can be estimated. Another disadvantage is that distances are only indirectly integrated into this measure. What in the first introduced approach has a very high impact on the score values has a very low impact on the accordant measure in this approach.

A “compromise” position between these two approaches can be a third method, which can be called “nearest neighbour”-approach – based on the related cluster analysis method. For this approach, an Euclidean distance matrix (as the one of table 2) is used and only the lowest or minimal value for each knowledge-producing unit is taken into consideration. Accordingly, the accordant values show the distance to the nearest neighbouring unit for every observation. The so established distribution with its statistical attributes (mean value, standard deviation, median, etc.) can be used to describe the spatial density of the knowledge cluster. For the Ho Chi Minh City cluster the mean minimal distance has a value of 0.4 kilometres whereas the value for the Mekong Delta is 4.7 kilometres. Generally, the sensitivity towards outliers and extreme cases cannot be reduced with this approach completely.

Another fourth method, which strongly mitigates the impact of outliers, is based on the natural logarithm. The values of the Euclidean distance matrix simply have to be transformed with the natural logarithm function, whereby the impact of the outliers and extreme values will be strictly mitigated (see

table 4). The mean for all average values per knowledge producing unit can be taken to construct a density measure for this approach. The respective density score value for the knowledge cluster in the Mekong Delta would be 10.7 whereas the value for the Ho Chi Minh City cluster would have a value of 8.3. A disadvantage of this approach is that the distances between two clusters with very different measures of spread are not adequately reflected - as in the example of Ho Chi Minh City and the Mekong Delta where the accordant score values only differ by the factor of 1.3.

Table 4 Example for the logarithmic transformation approach

| | | Name of institute | An Giang Universitas | Bac Lieu University | Can Tho University | Dong Thap University | ... |
|----------------------|----------|-------------------|----------------------|---------------------|--------------------|----------------------|-----|
| | | Latitude | 547768 | 579406 | 584535 | 568901 | ... |
| Name of institute | Latitude | Longitude | 1147099 | 1026762 | 1108858 | 1156715 | ... |
| An Giang Universitas | 547768 | 1147099 | | 11,7314705 | 10,8789695 | 10,0526791 | ... |
| Bac Lieu University | 579406 | 1026762 | 11,7314705 | | 11,3175924 | 11,7781848 | ... |
| Can Tho University | 584535 | 1108858 | 10,8789695 | 11,3175924 | | 10,8266734 | |
| Dong Thap University | 568901 | 1156715 | 10,0526791 | 11,7781848 | 10,8266734 | | ... |
| ... | ... | ... | ... | ... | ... | ... | ... |

A last and fifth method, which takes all possible distances within a cluster into consideration and at the same time mitigates the impact of outliers, is the normal distribution probability index. In this approach the latitude and longitude variables are used. With the means and the standard deviations of both variables as well as the correlation coefficient between the latitude and longitude variables the probability that the accordant point is part of a normal distribution in the two-dimensional vector space is calculated. The probability values are then multiplied with the distance between the latitude and the longitude values to the accordant mean values (see below for the exact equations). The mean value of the so created values is then used as a density score, which is sensitive only towards very extreme outliers. The accordant value for Ho Chi Minh City is 973.1 and for the Mekong Delta it is 15268.3.

All in all, we have thus proposed the following five measures of spatial or distance density:

1. The "Mean Euclidean Distance Index" (EDI)
2. The "Neighbourhood per Radius Index" (NRI)
3. The "Nearest Neighbour Index" (NNI)
4. The "Mean Logarithmically Transformed Euclidean Distance Index" (LTEDI)
5. The "Normal Distribution Probability Index" (NDPI)

| Measure of density / clustering index | Value for HCMC | Value for Mekong Delta | Equation (for d_{ij} =Euclidean distance between x_i and x_j) |
|---------------------------------------|----------------|------------------------|--|
| 1. EDI | 5.6 | 66.7 | $A = \frac{1}{n} \sum_i a_i$ <p>whereas $a_i = \frac{1}{n-1} \sum_{j \neq i} d_{ij}$</p> |
| 2. NRI (for r=1 km) | 13.6 | 0.04 | $B^r = \frac{1}{n} \sum_i b_i^r$ <p>whereas $b_i^r = \frac{1}{k_i - 1} \sum_{\{j j \neq i \wedge d_{ij} \leq r\}} d_{ij}$</p> |
| 3. NNI | 0.4 | 4.7 | $C = \frac{1}{n} \sum_i c_i$ <p>whereas $c_i = \min_{j \neq i} d_{ij}$</p> |
| 4. LTEDI | 8.3 | 10.7 | $D = \frac{1}{n} \sum_i l d_i$ <p>whereas $l d_i = \frac{1}{n-1} \sum_{j \neq i} \ln(d_{ij})$</p> |
| 5. NDPI | 973.1 | 15268.3. | $E = \frac{1}{n} \sum_i d_{i\bar{X}} * \text{Prob}(N^2 \geq (X_i - \bar{X}))$ <p>whereas N^2=bivariate normal distribution and $d_{i\bar{X}}$=Euclidean distance of x_i to the cluster mean</p> |

5. Conclusion: The Use of Epistemic Landscapes

In this paper we have demonstrated how knowledge attributes of various kinds can be made visible in a knowledge map. Knowledge is not evenly distributed in space but shows discontinuities, gaps and heights. We use the concept of “epistemic landscape” to allude to the complex tapestry of knowledge assets, institutions, organisations, hubs and clusters. Since antiquity maps have been used to provide orientation and direction. Moreover they “can bridge the gap between language and culture in terms of communicating” (Hatfield, 2006). Maps are thus powerful tools in aid of decision making, proper planning and resource allocation. They are put into practice by indicating “how to get from here to there”. They are in themselves repositories of knowledge, which can be retrieved and put into action. Epistemic landscapes and knowledge maps are therefore important parts of any information system. By additionally computing statistical measures of the density of knowledge clusters, comparative data can be interpreted. By correlating indicators, i.e. on knowledge output (like research papers or patents) with our knowledge density measure, the effectiveness of knowledge clustering can be studied. So far a similar approach has been used to study the competitive advantage of regions, following the earlier studies of Porter and others (Porter 1990; Sölvell 2009).

Last not least we refer to the didactic value of maps. Information and knowledge, in our case the potential use of knowledge for development, have to be distributed to those that either benefit or suffer from the application of knowledge for development. The concept of epistemic landscapes and maps showing the complex and complicated business of producing and using knowledge enhance, we believe, the chances of government agencies, companies and civic organisations to understand and use knowledge for development.

References

- ESRI. 1997. "ESRI Shapefile Technical Description. An ESRI White Paper. (<http://www.esri.com/library/whitepapers/pdfs/shapefile.pdf>)
- Evers, Hans-Dieter. 2003. "Transition towards a Knowledge Society: Malaysia and Indonesia in Comparative Perspective." *Comparative Sociology* 2:355-373.
- . 2008. "Knowledge Hubs and Knowledge Clusters: Designing a Knowledge Architecture for Development." in ZEF Working Paper Series No 27. Bonn: Center for Development Research (ZEF), University of Bonn.
- Evers, Hans-Dieter , and Tatjana Bauer. 2009. "Emerging Epistemic Landscapes: Knowledge Clusters in Ho Chi Minh City and the Mekong Delta." ZEF Working Paper Series.
- Evers, Hans-Dieter, and Simon Benedikter. 2009. "Strategic Group Formation in the Mekong Delta - The Social Transformation of a Modern Hydraulic Society." ZEF Working Paper Series 35.
- Evers, Hans-Dieter, and Solvay Gerke. 2009. "Strategic Group Analysis." ZEF Working Paper Series 34.
- Hornidge, Anna-Katharina. 2007. *Knowledge Society: Vision and Social Construction of Reality in Germany and Singapore* Berlin and London: LIT Verlag.
- Knorr-Cetina, Karin. 1999. *Epistemic Cultures: How the Sciences Make Knowledge*. Cambridge: Harvard University Press.
- Meusburger, Peter. 2000. "The spatial concentration of knowledge. Some theoretical considerations." *Erdkunde* 54:352-364.
- Porter, Michael 2003. "The Economic Performance of Regions." *Regional Studies* 37: 6-7.
- Porter, Michael E. 1990. *The Competitive Advantage of Nations*. New York: The Free Press.
- Reineke, L.H. 1933. Perfecting a stand-density index for even-aged forest. *Journal of Agricultural Research* 46:627-638.
- Sölvell, Örjan 2009. *Clusters – Balancing Evolutionary and Constructive Forces*. Stockholm: Ivory Tower Publishers.
- Weisberg, Michael , and Ryan Muldoon. 2007. "Epistemic Landscapes and the Division of Cognitive Labor." in unpublished ms. Pittsburgh. Penn: University of Pennsylvania
- Wernick, Andrew. 2006. "Comte and the encyclopedia " *Theory, Culture & Society* 23.

- 1 Evers, Hans-Dieter and Solvay Gerke (2005). Closing the Digital Divide: Southeast Asia's Path Towards a Knowledge Society.
- 2 Bhuiyan, Shajahan and Hans-Dieter Evers (2005). Social Capital and Sustainable Development: Theories and Concepts.
- 3 Schetter, Conrad (2005). Ethnicity and the Political Reconstruction of Afghanistan.
- 4 Kassahun, Samson (2005). Social Capital and Community Efficacy. In Poor Localities of Addis Ababa Ethiopia.
- 5 Fuest, Veronika (2005). Policies, Practices and Outcomes of Demand-oriented Community Water Supply in Ghana: The National Community Water and Sanitation Programme 1994 – 2004.
- 6 Menkhoff, Thomas and Hans-Dieter Evers (2005). Strategic Groups in a Knowledge Society: Knowledge Elites as Drivers of Biotechnology Development in Singapore.
- 7 Mollinga, Peter P. (2005). The Water Resources Policy Process in India: Centralisation, Polarisation and New Demands on Governance.
- 8 Evers, Hans-Dieter (2005). Wissen ist Macht: Experten als Strategische Gruppe.
- 8a Evers, Hans-Dieter and Solvay Gerke (2005). Knowledge is Power: Experts as Strategic Group.
- 9 Fuest, Veronika (2005). Partnerschaft, Patronage oder Paternalismus? Eine empirische Analyse der Praxis universitärer Forschungskoooperation mit Entwicklungsländern.
- 10 Laube, Wolfram (2005). Promise and Perils of Water Reform: Perspectives from Northern Ghana.
- 11 Mollinga, Peter P. (2004). Sleeping with the Enemy: Dichotomies and Polarisation in Indian Policy Debates on the Environmental and Social Effects of Irrigation.
- 12 Wall, Caleb (2006). Knowledge for Development: Local and External Knowledge in Development Research.
- 13 Laube, Wolfram and Eva Youkhana (2006). Cultural, Socio-Economic and Political Constraints for Virtual Water Trade: Perspectives from the Volta Basin, West Africa.
- 14 Hornidge, Anna-Katharina (2006). Singapore: The Knowledge-Hub in the Straits of Malacca.
- 15 Evers, Hans-Dieter and Caleb Wall (2006). Knowledge Loss: Managing Local Knowledge in Rural Uzbekistan.
- 16 Youkhana, Eva, Lautze, J. and B. Barry (2006). Changing Interfaces in Volta Basin Water Management: Customary, National and Transboundary.
- 17 Evers, Hans-Dieter and Solvay Gerke (2006). The Strategic Importance of the Straits of Malacca for World Trade and Regional Development.
- 18 Hornidge, Anna-Katharina (2006). Defining Knowledge in Germany and Singapore: Do the Country-Specific Definitions of Knowledge Converge?
- 19 Mollinga, Peter M. (2007). Water Policy – Water Politics: Social Engineering and Strategic Action in Water Sector Reform.
- 20 Evers, Hans-Dieter and Anna-Katharina Hornidge (2007). Knowledge Hubs Along the Straits of Malacca.
- 21 Sultana, Nayeem (2007). Trans-National Identities, Modes of Networking and Integration in a Multi-Cultural Society. A Study of Migrant Bangladeshis in Peninsular Malaysia.
- 22 Yalcin, Resul and Peter M. Mollinga (2007). Institutional Transformation in Uzbekistan's Agricultural and Water Resources Administration: The Creation of a New Bureaucracy.
- 23 Menkhoff, T., Loh, P. H. M., Chua, S. B., Evers, H.-D. and Chay Yue Wah (2007). Riau Vegetables for Singapore Consumers: A Collaborative Knowledge-Transfer Project Across the Straits of Malacca.
- 24 Evers, Hans-Dieter and Solvay Gerke (2007). Social and Cultural Dimensions of Market Expansion.
- 25 Obeng, G. Y., Evers, H.-D., Akuffo, F. O., Braimah, I. and A. Brew-Hammond (2007). Solar PV Rural Electrification and Energy-Poverty Assessment in Ghana: A Principal Component Analysis.
- 26 Eguavoen, Irit; E. Youkhana (2008). Small Towns Face Big Challenge. The Management of Piped Systems after the Water Sector Reform in Ghana.
- 27 Evers, Hans-Dieter (2008). Knowledge Hubs and Knowledge Clusters: Designing a Knowledge Architecture for Development
- 28 Ampomah, Ben Y., Adjei, B. and E. Youkhana (2008). The Transboundary Water Resources Management Regime of the Volta Basin.
- 29 Saravanan.V.S.; McDonald, Geoffrey T. and Peter P. Mollinga (2008). Critical Review of Integrated Water Resources Management: Moving Beyond Polarised Discourse.
- 30 Laube, Wolfram; Awo, Martha and Benjamin Schraven (2008). Erratic Rains and Erratic Markets: Environmental change, economic globalisation and the expansion of shallow groundwater irrigation in West Africa.
- 31 Mollinga, Peter P. (2008). For a Political Sociology of Water Resources Management.
- 32 Hauck, Jennifer; Youkhana, Eva (2008). Histories of water and fisheries management in Northern Ghana.
- 33 Mollinga, Peter P. (2008). The Rational Organisation of Dissent. Boundary concepts, boundary objects and boundary settings in the interdisciplinary study of natural resources management.
- 34 Evers, Hans-Dieter; Gerke, Solvay (2009). Strategic Group Analysis.
- 35 Evers, Hans-Dieter; Benedikter, Simon (2009). Strategic Group Formation in the Mekong Delta - The Development of a Modern Hydraulic Society.
- 36 Obeng, George Yaw; Evers, Hans-Dieter (2009). Solar PV Rural Electrification and Energy-Poverty: A Review and Conceptual Framework With Reference to Ghana.
- 37 Scholtes, Fabian (2009). Analysing and explaining power in a capability perspective.
- 38 Eguavoen, Irit (2009). The Acquisition of Water Storage Facilities in the Abay River Basin, Ethiopia.
- 39 Hornidge, Anna-Katharina; Mehmood Ul Hassan; Mollinga, Peter P. (2009). 'Follow the Innovation' – A joint experimentation and learning approach to transdisciplinary innovation research.
- 40 Scholtes, Fabian (2009). How does moral knowledge matter in development practice, and how can it be researched?
- 41 Laube, Wolfram (2009). Creative Bureaucracy: Balancing power in irrigation administration in northern Ghana.
- 42 Laube, Wolfram (2009). Changing the Course of History? Implementing water reforms in Ghana and South Africa.

- 43 Scholtes, Fabian (2009). Status quo and prospects of smallholders in the Brazilian sugarcane and ethanol sector: Lessons for development and poverty reduction.
- 44 Evers, Hans-Dieter, Genschick, Sven, Schraven, Benjamin (2009). Constructing Epistemic Landscapes: Methods of GIS-Based Mapping.
- 45 Saravanan V.S. (2009). Integration of Policies in Framing Water Management Problem: Analysing Policy Processes using a Bayesian Network.
- 46 Saravanan V.S. (2009). Dancing to the Tune of Democracy: Agents Negotiating Power to Decentralise Water Management.
- 47 Huu, Pham Cong, Rhlers, Eckart, Saravanan, V. Subramanian (2009). Dyke System Planing: Theory and Practice in Can Tho City, Vietnam.
- 48 Evers, Hans-Dieter, Bauer, Tatjana (2009). Emerging Epistemic Landscapes: Knowledge Clusters in Ho Chi Minh City and the Mekong Delta.
- 49 Reis, Nadine; Mollinga, Peter P. (2009). Microcredit for Rural Water Supply and Sanitation in the Mekong Delta. Policy implementation between the needs for clean water and 'beautiful latrines'.
- 50 Gerke, Solvay; Ehlert, Judith (2009). Local Knowledge as Strategic Resource: Fishery in the Seasonal Floodplains of the Mekong Delta, Vietnam
- 51 Schraven, Benjamin; Eguavo, Irit; Manske, Günther (2009). Doctoral degrees for capacity development: Results from a survey among African BiGS-DR alumni.
- 52 Nguyen, Loan (2010). Legal Framework of the Water Sector in Vietnam.
- 53 Nguyen, Loan (2010). Problems of Law Enforcement in Vietnam. The Case of Wastewater Management in Can Tho City.
- 54 Oberkircher, Lisa et al. (2010). Rethinking Water Management in Khorezm, Uzbekistan. Concepts and Recommendations.
- 55 Waibel, Gabi (2010). State Management in Transition: Understanding Water Resources Management in Vietnam.
- 56 Saravanan V.S., Mollinga, Peter P. (2010). Water Pollution and Human Health. Transdisciplinary Research on Risk Governance in a Complex Society.
- 57 Vormoor, Klaus (2010). Water Engineering, Agricultural Development and Socio-Economic Trends in the Mekong Delta, Vietnam.
- 58 Hornidge, Anna-Katharina, Kurfürst, Sandra (2010). Envisioning the Future, Conceptualising Public Space. Hanoi and Singapore Negotiating Spaces for Negotiation.
- 59 Mollinga, Peter P. (2010). Transdisciplinary Method for Water Pollution and Human Health Research.
- 60 Youkhana, Eva (2010). Gender and the development of handicraft production in rural Yucatán/Mexico.
- 61 Naz, Farhat, Saravanan V. Subramanian (2010). Water Management across Space and Time in India.
- 62 Evers, Hans-Dieter, Nordin, Ramli, Nienkemoer, Pamela (2010). Knowledge Cluster Formation in Peninsular Malaysia: The Emergence of an Epistemic Landscape.
- 63 Mehmood Ul Hassan, Hornidge, Anna-Katharina (2010). 'Follow the Innovation' – The second year of a joint experimentation and learning approach to transdisciplinary research in Uzbekistan.
- 64 Mollinga, Peter P. (2010). Boundary concepts for interdisciplinary analysis of irrigation water management in South Asia.
- 65 Noelle-Karimi, Christine (2006). Village Institutions in the Perception of National and International Actors in Afghanistan. (Amu Darya Project Working Paper No. 1)
- 66 Kuzmits, Bernd (2006). Cross-bordering Water Management in Central Asia. (Amu Darya Project Working Paper No. 2)
- 67 Schetter, Conrad, Glassner, Rainer, Karokhail, Masood (2006). Understanding Local Violence. Security Arrangements in Kandahar, Kunduz and Paktia. (Amu Darya Project Working Paper No. 3)
- 68 Shah, Usman (2007). Livelihoods in the Asqalan and Sufi-Qarayateem Canal Irrigation Systems in the Kunduz River Basin. (Amu Darya Project Working Paper No. 4)
- 69 ter Steege, Bernie (2007). Infrastructure and Water Distribution in the Asqalan and Sufi-Qarayateem Canal Irrigation Systems in the Kunduz River Basin. (Amu Darya Project Working Paper No. 5)
- 70 Mielke, Katja (2007). On The Concept of 'Village' in Northeastern Afghanistan. Explorations from Kunduz Province. (Amu Darya Project Working Paper No. 6)
- 71 Mielke, Katja, Glassner, Rainer, Schetter, Conrad, Yarash, Nasratullah (2007). Local Governance in Warsaj and Farkhar Districts. (Amu Darya Project Working Paper No. 7)
- 72 Meininghaus, Esther (2007). Legal Pluralism in Afghanistan. (Amu Darya Project Working Paper No. 8)
- 73 Yarash, Nasratullah, Smith, Paul, Mielke, Katja (2010). The fuel economy of mountain villages in Ishkamish and Burka (Northeast Afghanistan). Rural subsistence and urban marketing patterns. (Amu Darya Project Working Paper No. 9)
- 74 Oberkircher, Lisa (2011). 'Stay – We Will Serve You Plov!'. Puzzles and pitfalls of water research in rural Uzbekistan.
- 75 Shtaltovna, Anastasiya, Hornidge, Anna-Katharina, Mollinga, Peter P. (2011). The Reinvention of Agricultural Service Organisations in Uzbekistan – a Machine-Tractor Park in the Khorezm Region.
- 76 Stellmacher, Till, Grote, Ulrike (2011). Forest Coffee Certification in Ethiopia: Economic Boon or Ecological Bane?

ZEF Development Studies

edited by Solvay Gerke and Hans-Dieter Evers

Center for Development Research (ZEF),
University of Bonn

Shahjahan H. Bhuiyan

Benefits of Social Capital. Urban Solid Waste Management in Bangladesh

Vol. 1, 2005, 288 p., 19.90 EUR, br. ISBN 3-8258-8382-5

Veronika Fuest

Demand-oriented Community Water Supply in Ghana. Policies, Practices and Outcomes

Vol. 2, 2006, 160 p., 19.90 EUR, br. ISBN 3-8258-9669-2

Anna-Katharina Hornidge

Knowledge Society. Vision and Social Construction of Reality in Germany and Singapore

Vol. 3, 2007, 200 p., 19.90 EUR, br. ISBN 978-3-8258-0701-6

Wolfram Laube

Changing Natural Resource Regimes in Northern Ghana. Actors, Structures and Institutions

Vol. 4, 2007, 392 p., 34.90 EUR, br. ISBN 978-3-8258-0641-5

Lirong Liu

Wirtschaftliche Freiheit und Wachstum. Eine internationale vergleichende Studie

Vol. 5, 2007, 200 p., 19.90 EUR, br. ISBN 978-3-8258-0701-6

Phuc Xuan To

Forest Property in the Vietnamese Uplands. An Ethnography of Forest Relations in Three Dao Villages

Vol. 6, 2007, 296 p., 29.90 EUR, br. ISBN 978-3-8258-0773-3

Caleb R.L. Wall, Peter P. Mollinga (Eds.)

Fieldwork in Difficult Environments. Methodology as Boundary Work in Development Research

Vol. 7, 2008, 192 p., 19.90 EUR, br. ISBN 978-3-8258-1383-3

Solvay Gerke, Hans-Dieter Evers, Anna-K. Hornidge (Eds.)

The Straits of Malacca. Knowledge and Diversity

Vol. 8, 2008, 240 p., 29.90 EUR, br. ISBN 978-3-8258-1383-3

Caleb Wall

Argorods of Western Uzbekistan. Knowledge Control and Agriculture in Khorezm

Vol. 9, 2008, 384 p., 29.90 EUR, br. ISBN 978-3-8258-1426-7

Irit Eguavoen

The Political Ecology of Household Water in Northern Ghana

Vol. 10, 2008, 328 p., 34.90 EUR, br. ISBN 978-3-8258-1613-1

Charlotte van der Schaaf

Institutional Change and Irrigation Management in Burkina Faso. Flowing Structures and Concrete Struggles

Vol. 11, 2009, 344 p., 34.90 EUR, br. ISBN 978-3-8258-1624-7

Nayeem Sultana

The Bangladeshi Diaspora in Peninsular Malaysia. Organizational Structure, Survival Strategies and Networks

Vol. 12, 2009, 368 p., 34.90 EUR, br. ISBN 978-3-8258-1629-2

Peter P. Mollinga, Anjali Bhat, Saravanan V.S. (Eds.)

When Policy Meets Reality. Political Dynamics and the Practice of Integration in Water Resources Management Reform

Vol. 13, 216 p., 29.90 EUR, br., ISBN 978-3-643-10672-8

Irit Eguavoen, Wolfram Laube (Eds.)

Negotiating Local Governance. Natural Resources Management at the Interface of Communities and the State

Vol. 14, 248 p., 29.90 EUR, br., ISBN 978-3-643-10673-5

William Tsuma

Gold Mining in Ghana. Actors, Alliances and Power

Vol. 15, 2010, 256 p., 29.90 EUR, br., ISBN 978-3-643-10811-1

Thim Ly

Planning the Lower Mekong Basin: Social Intervention in the Se San River

Vol. 16, 2010, 240 p., 29.90 EUR, br., ISBN 978-3-643-10834-0