

Colavecchio, Roberta; Amisano, Gianni; Fagan, Gabriel

## Conference Paper

# A money-based indicator for deflation risk

Beiträge zur Jahrestagung des Vereins für Socialpolitik 2014: Evidenzbasierte Wirtschaftspolitik  
- Session: Macroeconometrics, No. B13-V2

### Provided in Cooperation with:

Verein für Socialpolitik / German Economic Association

*Suggested Citation:* Colavecchio, Roberta; Amisano, Gianni; Fagan, Gabriel (2014) : A money-based indicator for deflation risk, Beiträge zur Jahrestagung des Vereins für Socialpolitik 2014: Evidenzbasierte Wirtschaftspolitik - Session: Macroeconometrics, No. B13-V2, ZBW - Deutsche Zentralbibliothek für Wirtschaftswissenschaften, Leibniz-Informationszentrum Wirtschaft, Kiel und Hamburg

This Version is available at:

<https://hdl.handle.net/10419/100595>

#### Standard-Nutzungsbedingungen:

Die Dokumente auf EconStor dürfen zu eigenen wissenschaftlichen Zwecken und zum Privatgebrauch gespeichert und kopiert werden.

Sie dürfen die Dokumente nicht für öffentliche oder kommerzielle Zwecke vervielfältigen, öffentlich ausstellen, öffentlich zugänglich machen, vertreiben oder anderweitig nutzen.

Sofern die Verfasser die Dokumente unter Open-Content-Lizenzen (insbesondere CC-Lizenzen) zur Verfügung gestellt haben sollten, gelten abweichend von diesen Nutzungsbedingungen die in der dort genannten Lizenz gewährten Nutzungsrechte.

#### Terms of use:

*Documents in EconStor may be saved and copied for your personal and scholarly purposes.*

*You are not to copy documents for public or commercial purposes, to exhibit the documents publicly, to make them publicly available on the internet, or to distribute or otherwise use the documents in public.*

*If the documents have been made available under an Open Content Licence (especially Creative Commons Licences), you may exercise further usage rights as specified in the indicated licence.*

# A money-based indicator for deflation risk\*

Gianni Amisano<sup>†</sup>

DG Research, European Central Bank

Roberta Colavecchio<sup>‡</sup>

Hamburg University

Gabriel Fagan<sup>§</sup>

DG Research, European Central Bank

Preliminary. This Version: February 2014

## Abstract

We employ a money-based early warning model in order to analyse the risk of a low inflation regime in the Euro Area, Japan and the US. The model specification allows for three different inflation regimes: "Low", "Medium" and "High" inflation, while state transition probabilities vary over time as a function of monetary variables. Using Bayesian techniques, we estimate the model with data from the mid 1970s up to the present. Our analysis suggests that the risks of a "Low" inflation regime in the Euro Area have been increasing in the course of the last six quarters of the sample; moreover, money growth plays a significant role in the assessment of such risks. Evidence for Japan and the US shows that for both countries the inclusion of an indicator variable does not substantially change the assessment of the risk of a "Low" inflation regime.

**Keywords:** Money growth, deflation, inflation regimes, Markov Switching models, Bayesian inference.

**JEL classification:** C11, C53, E31

---

\*We would like to thank for helpful comments and suggestions Carlo Altavilla, Bartosz Maćkowiak, Roberto Motto, Samuel Reynard, Massimo Rostagno, Oreste Tristani as well as conference participants at the EABCN-Bundesbank Conference "Inflation Developments after the Great Recession". The opinions expressed are personal and should not be attributed to the European Central Bank.

<sup>†</sup>European Central Bank, DG Research, Kaiserstrasse 29, D-60311, Frankfurt am Main, Germany. E-mail: gianni.amisano@ecb.int, amisano@eco.unibs.it.

<sup>‡</sup>Corresponding author, University Hamburg, Faculty Economics and Social Sciences, Department Socioeconomics, Welckerstr. 8, D-20354, Hamburg, Germany; E-mail: roberta.colavecchio@wiso.uni-hamburg.de.

<sup>§</sup>European Central Bank, DG Research, Kaiserstrasse 29, D-60311, Frankfurt am Main, Germany. E-mail: gabriel.fagan@ecb.int,

# 1 Introduction

Since the outbreak of the financial crisis of 2008-2009, the assessment and the implications of downside risks to price stability have periodically returned under scrutiny. In particular, deep recessions like the recent global contraction would normally be expected to cause the aggregate price level to drop. Instead, inflation has barely budged across the Great Recession and its aftermath.

One accredited explanation<sup>1</sup> for this relatively puzzling feature hinges on the role of monetary authorities. On one hand, central banks worldwide responded timely and aggressively to the sharp contraction in economic activity and falling inflation, cutting policy rates to near zero and deploying quantitative easing to support aggregate demand. On the other hand, it has been argued that the strengthening of central banks' credibility in response to their success in delivering stable inflation over the past decade has contributed to anchor beliefs about future growth in prices and wages. Thus, more stable inflation expectations resulting from credible central banks may have contributed to weaken the link between price developments and economic fluctuations and, in turn, helped to avert deflation. Nonetheless, the 2013 outlook for the global economy has remained exposed to a great degree of uncertainty. In the G3 countries (United States, euro area, Japan), broad measures of money and credit growth have been stagnant or shrinking; unemployment has remained high while the gaps between the economies' actual output and their potential are large. Hence, the risks to price stability in the medium term are currently tilted to the downside.<sup>2</sup>

The question of how large these risks are has always been a widely debated one. Despite the well-recognized potential costs of deflation, relatively little is known about the economic and financial factors that contribute to deflation risk, whose definition and assessment remain subject to a considerable degree of subjectivity in the relevant economic literature.

Against this backdrop, we adopt a monetary perspective and provide a money-based early warning model in order to analyse the risk of a low-inflation regime in the euro area, as well as in Japan and in the US. The model is estimated using quarterly data spanning over the last four decades but we are particularly interested in the current inflation developments and their implications for the near future. In this paper we extend the work of Amisano and Fagan (2013), who developed an early warning indicator for shifts in inflation regimes. In particular, we model inflation dynamics using a Bayesian Markov-Switching framework in which the economy can potentially switch between three states: "Low", "Medium" (or under control) and "High" inflation. Transition probabilities from

---

<sup>1</sup>See, e.g., IMF (2013), Coenen and Warne (2103).

<sup>2</sup>See, e.g., IMF (2013).

one regime to another are allowed to vary over time as a function of monetary variables. The idea of multiple inflation regimes finds theoretical ground in Benhabib et al. (2001), where the authors argue that economic systems that feature active interest rate feedback rules and contemplate the possibility of zero lower bound face multiple equilibria. Specifically, they demonstrate the presence of a steady state, other than the locally stable one at which monetary policy is active, in which the nominal interest rate is close to zero and inflation is possibly negative.

This approach aims to develop a model which exploits the information content of these variables as ‘warning signals’ of the risk of the departure of inflation from the price stability regime. The idea is consistent with Christiano and Rostagno (2001), who claimed that, although money is not particularly useful in forecasting inflation in the short run, a money-monitoring policy might indeed improve the economic performance of economies stuck in undesired equilibria, such as deflation, by eliminating them. Implicit here is the conjecture that inflation alternates across regimes mainly as a consequence of different monetary policy regimes.

For this reason, the analysis carried out in this paper is concerned with the prediction of inflation regimes, rather than with point forecasts of actual inflation levels. Arguably, this is a valuable piece of information for the assessment of price stability, as it provides a real time, money-based warning indicator of shifts in inflation regimes. The conclusion we draw is twofold: first, model estimations conducted with information up to the second quarter of 2013 show that the risks of a low inflation regime been increasing in the course of the last six quarters of the sample in both the euro area and in the US while in Japan have remained substantially unchanged; second, we find that only in the euro area money growth plays a significant role in the assessment of such risks. In particular, we show that alternative model specifications based on different indicators such as credit aggregates, return weaker signals of the risk of EA inflation entering the Low while evidence for Japan and US indicates that the inclusion of an indicator variable does not substantially change the assessment of the risk of entering a low inflation regime.

Our analysis of risks to price stability builds on a literature in which inflation is modelled as a Markov-Switching process. This strand of contributions has been extensively reviewed in Amisano and Fagan (2013), to which we refer. Nonetheless, over the last decade only, a number of diverse approaches have been used to tackle this very issue. Decressin and Laxton (2009) a deflation vulnerability indicator originally developed in Kumar et al. (2003). In particular, Kumar et al. (2003) develop an indicator of deflation vulnerability, which they apply to a set of countries accounting for over 80 percent of world GDP. The index includes a broad range of macroeconomic variables, such

as price indices, GDP growth and the output gap, the real exchange rate, equity prices, credit growth and monetary aggregates. The higher the level of indicator, the more likely it is that an economy will experience a prolonged period falling prices. Kumar et al. (2003) showed that deflationary tendencies in the global economy were somewhat higher in 2009 than during the 2002–03 deflation scare. Their finding was substantiated by means of a model-based analysis for the G3, in which the authors analyzed deflation vulnerability by employing the IMF staff’s Global Projection Model, which explicitly considers the implications of the zero interest floor.

The recent contribution of Coenen and Warne (2013) builds on the strand of literature which uses structural macroeconomic models to assess the consequences of the zero lower bound on nominal interest rate. In particular, the authors employed a micro-founded open-economy model to analyse the evolution of risks to price stability in the euro area between 2008 and 2011 on the basis of model-based predictive distributions. They showed that downside risks to price stability in the euro area were considerably greater than upside risks during the first half of 2009. Following a gradual re-balancing, the risk balance turned negative again in the second half of 2011.

A loss-function-based approach to risk measurement is instead adopted in Kilian and Manganelli (2007). On the assumption that private sectors’ agents can express their preference for inflation in the form of a loss function, the authors proposed formal measures of risks to price stability which feature explicit dependence from the agents’ preferences. They demonstrate that risk measures are influenced by a number of factors, such as the risk aversion of the agents as well as the forecast horizon. Moreover, as empirical application of their methodology, Kilian and Manganelli (2007) estimated the risks of deflation for the United States, Germany, and Japan for different forecast horizons and, as of September 2002, found evidence of substantial deflation risks for Japan only.

Fleckenstein et al. (2013) followed a market-based approach for measuring US deflation risk and employed market prices of inflation swaps and options to extract the actual distribution of inflation. Amongst the findings of the analysis, the authors showed that the market places substantial probability weight on deflation scenarios. Their contribution validates and extends the analysis of two other recent papers: Christensen, Lopez, and Rudebusch (2011), who fit a term structure model to the Treasury real and nominal term structures and estimate the value of the implicit deflation option embedded in Treasury Inflation Protected Securities prices; and Kitsul and Wright (2012), who used inflation options to infer the risk-neutral density for inflation.

The remainder of the paper is structured as follows. Section (2) describes the econometric model and our approach to estimation. The dataset is presented in Section (3) while Section (4) summarizes

the results. Section (5) details the outcome of a number of experiments aimed at assessing the robustness of our estimation results; Section (6) concludes, highlighting the avenues for ongoing and future research. In Appendix (A) we describe the data sources and in Appendix (B) we provide details on the Bayesian posterior simulation.

## 2 The econometric model

The model we specify, despite its relatively low level of complexity, is capable to generate inflation regimes and allows for indicator variables to act as regime predictors. In particular, we model inflation ( $y_t$ ) as a stationary process that, conditional to an unobservable variable,  $s_t$ , has the following autoregressive representation:

$$\begin{aligned} y_t &= c_{s_t} + \rho y_{t-1} + \sigma_{s_t} e_t & (1) \\ e_t &\sim NID(0, 1) \\ c_{s_t} &= (1 - \rho)\mu_{s_t} \\ s_t &= 1, 2, 3 \end{aligned}$$

Equation (1) shows that  $y_t$  features three different states, each of which is associated with regime-specific intercepts,  $c_{s_t}$ , and shock variances,  $\sigma_{s_t}$ .  $s_t$  denotes a Markov switching discrete process describing the inflation regimes:  $s_t = 1$  ("Low" inflation),  $s_t = 2$  ("Medium" inflation) and  $s_t = 3$  ("High" inflation). Transition probabilities (henceforth TPs) across regimes are time-varying and are collected the  $(3 \times 3)$  transition probability matrix (TPM),  $\mathbf{P}_{t+1}$ , defined as follows:

$$pr(s_{t+1} = j | s_t = i) = \tag{2}$$

$$\mathbf{P}_{t+1} = \begin{bmatrix} p_{11,t+1} & p_{12,t+1} & 1 - p_{11,t+1} - p_{12,t+1} \\ p_{21,t+1} & p_{22,t+1} & 1 - p_{21,t+1} - p_{22,t+1} \\ p_{31,t+1} & p_{32,t+1} & 1 - p_{31,t+1} - p_{32,t+1} \end{bmatrix} \tag{3}$$

$$p_{ij,t+1} = pr(s_{t+1} = j | s_t = i, \mathbf{z}_t), i = 1, 2, 3; j = 1, 2, 3 \tag{4}$$

These TPs are allowed to depend on  $\mathbf{z}_t$ , a set of early warning indicators, and in particular on money or credit growth aggregates. At each point in time  $t + 1$ , TPs indicate the risks associated with regime transitions. Hence, TPs are conditional on the event that the model is in a given state

at time  $t$  and on the lagged indicator variables. Following Albert and Chib (1993), we use an ordered probit specification for (2) and model state transitions as:

$$\begin{aligned}
s_t = j | s_{t-1} = i &\iff \gamma_{j-1,i} < s_t^* \leq \gamma_{j,i} \\
s_t^* &= \beta_0' \mathbf{z}_t + \xi_{it-1} \beta_i + \eta_t, \eta_t \sim NID(0, 1) \\
\text{cov}(e_t, \eta_s) &= 0, \forall t, s \\
\xi_{it-1} &= 1 \iff s_{t-1} = i \\
\gamma_{0,i} &= -\infty, \gamma_{1,i} = 0, \gamma_{m,i} = \infty
\end{aligned}$$

Hence, the free parameters are those in the  $\beta$  vector, i.e. the  $\beta_0$  slope coefficients and the  $\beta_i, i = 1, 2, 3$ , state-specific intercepts, and the thresholds  $\gamma_{h,i}, i = 1, 2, 3, h = 1, 2, 3$ . In case  $m = 3$ , then we have  $(6 + n_z)$  free parameters, where  $n_z$  is the number of variables in  $\mathbf{z}_t$ .

The resulting time-varying transition probabilities are determined as follows:

$$\begin{aligned}
p_{i1,t} &= \Phi(-\beta_0' \mathbf{z}_t - \beta_i) \iff \beta_i = -\mathbf{z}_t' \beta_0 - \Phi^{-1}(p_{i1,t}) \\
p_{i2,t} + p_{i1,t} &= \Phi(-\beta_0' \mathbf{z}_t - \beta_i + \gamma_{2i}) \iff \gamma_{2i} = \beta_0' \mathbf{z}_t + \beta_i + \Phi^{-1}(p_{i1,t} + p_{i2,t})
\end{aligned} \tag{5}$$

A by-product of model estimation are the estimated smoothed probabilities of each state, namely the assessment of how likely each of the state is on the basis of the whole sample used for estimation

$$\begin{aligned}
p(s_t = i | \underline{\mathbf{y}}_t, \mathbf{z}_t), i &= 1, 2, 3; \tau = 1, 2, \dots, t, \\
\underline{\mathbf{y}}_t &= \{y_\tau : \tau = 1, 2, \dots, t\}, \\
\mathbf{z}_t &= \{z_\tau : \tau = 1, 2, \dots, t\}.
\end{aligned} \tag{6}$$

Combining TPs (equation (2)) with smoothed probabilities (equation (6)) at the end of the estimation sample returns one-step-ahead regime probabilities which can be used to assess at time  $t$  the overall probability of inflation being in each one of the three states at time  $(t + 1)$ :

$$p(s_{t+1} = j | \underline{\mathbf{y}}_t, \mathbf{z}_t) = \sum_{i=1}^3 p(s_t = i | \underline{\mathbf{y}}_t, \mathbf{z}_t) \times p_{ij,t+1}, j = 1, 2, 3. \tag{7}$$

where  $p(s_t = i | \underline{\mathbf{y}}_t, \mathbf{z}_t)$  are the smoothed probabilities and  $p_{ij,t+1}$  are the transition probabilities.

The model is presented here generalizes the early warning (henceforth EW) Markov Switching model used in Amisano and Fagan (2013) in order to accommodate the possible presence of three

regimes. We adopt a Bayesian approach to estimation using weakly informative priors meant at conveying the prior belief that regimes tend to be persistent. Details about the choice of the priors as well as the description of the posterior simulation strategy are included in Appendix (B).

## 2.1 Calibration of priors on transition probabilities parameters

At this point it is important to mention that in our empirical application the values of the early warning indicators,  $\mathbf{z}_t$ , are standardised. This transformation is neutral and yet it pins down exactly the values of the intercepts and slopes in the ordered probit specification. Hence, it is reasonable to ask what happens to the TPM when  $\mathbf{z}_t = \mathbf{0}$ , i.e. when the level of the indicator variable is aligned with its sample average. In that case we can use (5) to calibrate the prior for the parameters. Just to fix ideas, let us consider a case in which we aim to center the prior around values that produce the following TPM

$$\bar{\mathbf{P}} = \mathbf{P}(\mathbf{z}_t = \mathbf{0}) = \begin{bmatrix} .80 & .19 & .01 \\ .02 & .90 & .08 \\ .005 & .14 & .85 \end{bmatrix}. \quad (8)$$

The  $\bar{\mathbf{P}}$  matrix describes a situation in which the first state tends to be less persistent than the second and the second state more persistent than the third, while the third is in turn more persistent than the first, i.e.  $\bar{p}_{11} < \bar{p}_{22}$ ,  $\bar{p}_{33} < \bar{p}_{22}$ ,  $\bar{p}_{11} < \bar{p}_{33}$ . The structure of the  $\bar{\mathbf{P}}$  matrix also suggests that for  $s_t = 1$  and  $s_t = 3$ , a shift to a neighbouring state is more likely than a shift to the furthest state, while abandoning state 2 for state 3 is more likely than abandoning it for state 1 ( $\bar{p}_{21} < \bar{p}_{23}$ ). The features displayed by (8) are indeed compatible with an interpretation of the regimes as Low, Medium and High ( $s_t = 1, 2, 3$ ) inflation, respectively. We shall take this numerical example as reference to explain the interpretation of the resulting ordered probit parameters and as a guide to specify the central location of a prior distribution for these parameters.

Taking the point values of probabilities in (8) and using (5), the corresponding values for the ordered probit specification, i.e. intercepts, slopes and threshold parameters are:

$$\beta = \begin{bmatrix} -.84 \\ 2.05 \\ 2.57 \end{bmatrix}, \gamma = \begin{bmatrix} 1.50 \\ 3.45 \\ 1.50 \end{bmatrix}$$

These values are used as prior means. Prior uncertainty around the prior mean is modelled to be substantial and to allow for data to dominate results.



### 3 The dataset

We estimate our EW model for three different countries separately: the Euro Area (EA) Japan, and the US. This choice was motivated by the following considerations: first, data on the relevant variables are available for time spans long enough to allow the identification of regime changes; second, focusing on a set of countries instead of on a single one helps shed some light on the robustness of the results, in particular when the analyzed countries feature rather diverse inflation experiences. Finally, Japan is the one country which underwent a long deflationary phase in the course of the considered time span and as such its inflation data are expected to provide substantial insight on the characteristics of a "deflation" regime.

The country-specific data sets include quarterly data on inflation, money, output and its deflator as well as total credit. Inflation, whose sample behaviour is depicted in Figure A.1 (left column), is computed as logarithmic fourth-difference of the consumer price index. As for the variables to be included as potential indicator in our EW model, we employed both monetary and credit aggregates. In particular, for the former we opted for the broad monetary aggregate used by the respective central banks, that is M3 for the Euro Area, and M2 for Japan and the US. Moreover, instead of considering the raw unadjusted money growth, we developed an "adjusted" gauge which aims to correct for changes in trend in money velocity and/or in potential output. Finally, the adjusted money growth indicator was appropriately lagged and smoothed, in order to model the leading properties of money growth on inflation and to avoid for its signalling properties to be distorted by temporary shocks with no implications for future inflation (Figure A.1, right column). For the technical details on the construction of the "adjusted" monetary indicator we refer to Amisano and Fagan (2013). Credit growth, the variable used in the analysis as alternative early warning indicator, is computed as logarithmic fourth-difference of loans to private sector in nominal terms, also appropriately lagged and smoothed. Table (1) summarizes the information on the series and the sample sizes being used, while the sources and the transformations applied to the data are described in Appendix (A). An additional data-related issue we had to face was the construction of historical backdata for the euro area. The procedure implemented has been thoroughly explained in Amisano and Fagan (2013), to which we refer for further details.

## 4 Estimation results

As already stated, we conduct our analysis on data for Euro Area, Japan and US. We estimate a univariate autoregressive process for inflation characterised by three regimes: a "Low" inflation regime, a "Medium" inflation regime, compatible with the notion of price stability and a "High" inflation regime. It is important to mention that for the Euro Area the "Low" inflation regime is calibrated, given that the occasional and short-lived negative inflation rates seen in the data throughout the estimation sample can hardly be characterised as "regimes". In particular, the upper left panel of Figure A.1 shows inflation reaching zero briefly in 1986Q4 and, much later on, dipping into negative territory in 2009Q3. In the analysis we carry out here we calibrate the Euro Area "Low" inflation state with parameter values that qualitatively correspond to the state-specific features of the parameters estimated for Japan in Amisano and Colavecchio (2013).<sup>3</sup> The same argument applies to the US case.

We implement MCMC posterior simulation of the parameters according to the Gibbs sampling scheme described in Appendix (B). The estimation results of the EW model with the adjusted money growth as indicator variable are displayed in Tables (2)-(4). For each of the parameters being estimated the tables report their mean, standard deviation and 2.5% and 97.5% quantiles of the prior and posterior distributions. In particular, in the top panel of Tables (2)-(4) are collected the parameters which describe the distribution of inflation conditional on each state (i.e.  $\rho$ ,  $\mu_i$  and  $\sigma_i$ ). The figures suggest that the inflation regimes have clearly-defined features which also appear to be consistent with a priori expectations: the posterior mean of the "Medium" inflation regime is below 2%, in line with the current notion of price stability/inflation target, and displays a relatively subdued variance; in the case of Japan (Table (3)), the only one where the "Low" inflation regime has not been calibrated, state 1 is characterized by 0-mean coupled with low variance while state 3 exhibits a posterior mean above 6% and large variance. Moreover, all coefficients (with the exception of  $\mu_1$  for Japan), are found to be relevant: their posterior 95% confidence sets never contain zero.

The parameters determining the time-varying TPs described in the ordered probit equation (5), i.e. the slope coefficient  $\beta_0$ , the intercepts  $\beta_i$ , and the threshold parameters  $\gamma_{2i}$ , appear to be less well identified, mainly due to the low number of observed regime transitions in the estimation sample. While the bottom panel of Tables (2) - (4) show that Japan is the only country whose 95% confidence set for  $\beta_0$  does not include zero, the posterior probability of the slope parameter being greater than

---

<sup>3</sup>Amisano and Colavecchio (2013) estimate a Markov Switching vector autoregressive model for Japan and found evidence of three different regimes of inflation, one of which interpreted as "deflation".

zero is 90% and 80% for the Euro Area and for the US, respectively.

TPs can be interpreted as indicator of one-quarter-ahead regime shifts. and they are plotted in Figures (1)-(3). The respective end-of-sample values are reported in Tables (5)-(8), Panel A. Tables (5)-(8), Panel B displays the transition probabilities computed by setting the monetary indicator variable equal to its sample mean. This second set of probabilities is meant to provide a benchmark measure of regime change risks in average monetary conditions. Hence, the difference between corresponding values in Panel A and B of Tables (5)-(8) can be used to quantify the role of money growth in the assessment of risks at the end of the sample.

For the Euro Area, Figure (1) shows that, between the early 1980s and the burst of the financial crisis in 2007-2008, the time-varying probabilities of remaining in regime "Low",  $p_{11,t}$ , as well as the probabilities of moving from "Medium" to "Low" inflation state,  $p_{21,t}$ , fluctuate around their respective average values, i.e. those obtained in average monetary conditions. From 2010 on both  $p_{11,t}$  and  $p_{21,t}$  increase dramatically highlighting both an increase in deflationary risks and the relevance of money growth in the assessment of such risks. Table (5) provides a closer picture of the the end-of-sample figures. In particular, focussing on transition probabilities starting from regime Low (i.e.  $s_t = 1$ ), the probability of remaining in the same regime in Low inflation regime is up to 92.5%, compared with a mean value of 80.2%, while the probability of moving to the Medium state has decreased to 7.3%, as opposed to its mean value of 18.9%. Transition probabilities starting from the Medium inflation state show similar developments: the probability of going from Medium to Low inflation is up to 8.8%, from a mean of 2.6%, and the probability of remaining in Medium regime is down to 89.6% from a mean of 91.4%. These developments in transition probabilities are the direct results of the deterioration in money growth occurring since mid-2011, as shown in the upper right panel of Figure A.1.

Evidence for Japanese data is documented in Figure (2). The sharp drop observed in money growth in the mid Nineties resulted in a considerable and persistent increase in the probability of remaining in the Low inflation regime, compared with a mean value of 88%; at the same time, the probability of moving to the Medium state decreased below 5% as opposed to its mean value of 11.5%. Unsurprisingly, the evolution of the probabilities of leaving the Medium inflation regime to enter the Low inflation one mirrors those described above: in the second half of the nineties  $p_{21,t}$  has reached values near to 20% and has remained around 16% ever since, against a mean value of 8%.

The huge spikes in US inflation in the mid and late 1970s as well as the substantial drop experienced by US money growth in the 1990s are depicted in the departure of the the time-varying

transition probabilities from their respective averages in Figure (3). Additionally, the EW model signals a surge in deflationary risk after 2010, which appears to retrench towards the end of the estimation period. The end-of-sample values summarized in Table (8) show that transition probabilities calculated at current money conditions do not differ substantially from those obtained at average monetary conditions. This in turn might suggest that in the current phase the EW variable has had a weaker effect on the probabilities of switching regimes.

All in all, the developments displayed by the time-varying TPs seem to validate the fact that money growth might indeed have a role in the assessment of the risk of inflation regime changes and that this role/impact might be different depending on the state the system finds itself into. To shed further light on this aspect, in Figures (4)-(6) we depict the relationship between TPs, computed at the posterior mean of the parameters, and indicator variable. A couple of interesting pieces of evidence, common to all countries featured in our analysis, can be drawn: first, the relationship between the monetary indicator and the probability of remaining in the Low inflation regime,  $p_{11,t}$ , appears to be negative; conversely, an increase in money growth would result in an increase in the probability of leave the Low inflation state. Moreover, the concave shape of the elasticity of  $p_{22,t}$  with respect to money growth indicates that the probability of remaining in the "Medium" inflation state decreases when monetary conditions exceed a certain threshold, which in turn triggers an increase in the the risk of moving to the "High" inflation state,  $p_{23,t}$ .

The posterior simulation of the model provides, as a by-product, the posterior smoothed probabilities of each regime, which are plotted in Figure (7) and in Figure (8). These are the estimated probabilities of inflation being in one of the three regimes at any given point, conditioning on the whole sample evidence, as described in equation (6). The state allocation portrayed is very much in line with anecdotal evidence. Interesting enough, for the Euro Area, since 2011Q4, the Low inflation regime smoothed probability has markedly increased and reached 45.1% in 2013Q2. It is also worth noting that the Low regime smoothed probability does not return to the peaks reached during 2009 (87.4 %), when inflation fell sharply and touched negative territory. The values at the end of sample are rather comparable with the dynamics observed between 1983Q4 and 1985Q2. Symmetrically, the smoothed probability for the Medium inflation state has fallen from 91.8% to 54.1%. These developments can be interpreted as reflecting an increased risk of the Low inflation regime.

Looking at the Japanese evidence in the top panel of Figure (8), we observe that most of the estimation sample is allocated to the "Low" inflation regime, with a few exceptions. First, the decade 1970-1980, which featured the 70s oil price and which the model correctly assigns to the

"High" inflation regime; second, the early 90s as well as the years of the Asian financial crisis (early 1997-1999) and, finally, the 2008-2009, when the model most likely capture a phase of increased inflation volatility. Overall, it would appear that, in a backward-looking perspective, the model does not fail to timely signal an increase in the probability of entering the low inflation state in correspondence of periods featuring decreasing inflation. As for the current phase, the EW model suggests that the probability of the "Low" inflation regime, although high, has remained broadly unchanged since 2010.

As for the US case (Figure 8, bottom panel), we see that the run up to inflation in the early 1970s and inflationary spell of the late seventies are clearly picked up by the adjusted monetary indicator: the EW model assigns both episodes to the "High" inflation state. Also the acceleration of inflation taking place from 1987 until 1991 is led by money growth acceleration. Only in 2010 the model signals a substantial increase in deflation risks, in correspondence of a phase of high US inflation volatility coupled with a sharp drop in money growth. Such risks appear to have normalized towards the end of the estimation period.

Combining smoothed probabilities and transition probabilities together, it is possible to obtain one-step-ahead regime probabilities conditioned only on current observable variables, as described in equation (7). Intuitively, this corresponds to taking into consideration the uncertainty regarding the current regime. One step ahead regime probabilities are reported on the last lines of Panels A and B in Table (5). The last line of Panel A report one step ahead probabilities based on current monetary conditions, while the last line of Panel B reports one-step-ahead probabilities corresponding to average monetary conditions. It is hence possible to see that using actual monetary developments, the one-step-ahead Low regime probability is 46.5% , substantially higher than in neutral monetary conditions (37.5%), while the corresponding values for the one step ahead Medium regime probabilities are respectively 52.1% and 58.1%.

In synthesis, the results presented can be interpreted as signalling a relevant increase in the risk of EA inflation entering the Low inflation regime; the same cannot be said for Japan and the US (Tables 7 and 8), whose one-step-ahead probabilities calculated at current monetary conditions do not substantially differ from those corresponding to average conditions.

## 5 Robustness analysis

In the two subsections that follow we assess the sensitivity of the estimation results of the model specification presented in Section (4) with respect to two different dimensions: prior settings and model specifications. In particular, Subsection (5.1) addresses the former, while Subsection (5.2) focuses on the latter. Altogether we run the following four experiments:

- i. estimation of a model in which the prior for the Low inflation mean has been calibrated to 0% rather than to 0.5%;
- ii. estimation of a model with looser priors on the parameters determining the time-varying transition probabilities;
- iii. estimation of a model with fixed, exogenous transition probabilities;
- iv. estimation of a model where money growth has been replaced in the state equation by the lagged and smoothed growth rate of loans to the private sector.

Due to data availability, the model specification including loans for the Euro Area is estimated using the 1980Q1-2013Q2 sample period, shorter than the one used to estimate the model with money growth. This circumstance somehow limits the comparability across the results of the two different model specifications.

Additional details on the outcome of these exercises are provided in Subsections (5.1) and (5.2). All in all, the results of the sensitivity analysis can be interpreted as substantially corroborating the findings of the benchmark model outlined in Section (4).

### 5.1 Prior specification

In the context of prior sensitivity analysis, we focus on two crucial aspects of the benchmark model specification: first, the robustness of the estimation results with respect to the choice of the (calibrated) value for the mean of the Low inflation regime; second, the role of prior specification for the parameters determining the time-varying transition probabilities.

The first experiment is particularly relevant in our framework where the Low state level of inflation had to be calibrated, given that in the sample used for estimation low values of inflation have been experienced very seldom.<sup>4</sup> By estimating the same model specification with two different values

---

<sup>4</sup>In this context, a comparison with the results obtained using Japanese data is of great interest.

for the mean of regime 1 we assess the sensitivity of the estimations with respect to the calibrated parameter. The results of this first experiment<sup>5</sup> do not qualitatively differ from those presented in Section (4). In particular, both specifications provide indicators of risk of the Low inflation regimes that are largely unchanged almost throughout the entire estimation sample. Only towards the end of the sample, the model with calibrated mean of the Low inflation regime equal to 0% provides a much weaker signal of entering the Low inflation regime.

The second experiment is meant to analyse the role of the priors for the parameters of the state equation in affecting the estimation results. In particular, we increase the prior standard deviations in order to allow for looser priors on the relevant parameters. The results of this experiment<sup>6</sup>, qualitatively very similar to those reported in Section (4), validate the robustness of the estimations also with respect to the tightness of the priors.

## 5.2 Model specification

One distinctive feature of the framework we implement in this paper is the exploitation of the information content of monetary variables for regime allocation. In other words, these indicators act as ‘warning signals’ of the risk of the departure of inflation from the price stability regime. In order to check whether the results presented in Section (4) are robust with respect to the specification of the transition probability matrix, we estimate the model with fixed transition probabilities. This experiment is conducted to evaluate how a model without indicator variables would allocate inflation to the different regimes. Resulting smoothed probabilities<sup>7</sup> are coherent with those provided by the model with money growth, but at the end of the sample they tend to be smaller than those produced in the model with time-varying transition probabilities reported in Figure (1). This, in turn, seems to validate that the monetary aggregate might indeed provide valuable information for detecting the risk of entering a Low inflation regime.

The last robustness exercise we conduct aims at assessing the regime predictor properties of money growth against those of credit. In particular, we replace money growth with the rate of growth of loans to the private sector as EW indicator,  $z_t$ , in the time-varying transition probability function. As for the previous experiments, we obtain results largely consistent with those reported in Section (4). For the sake of brevity, we report only Euro Area results: evidence for the regime allocation is shown in the bottom panel of Figure (7) while Table (6) summarizes the end-of-sample transition probabilities.

---

<sup>5</sup>Details on the results are available upon request.

<sup>6</sup>Details on the results are available upon request.

<sup>7</sup>Details on the results are available upon request.

Interestingly, it turns out that using credit growth as indicator variable produces warning signals which are weaker than those provided by the model exploiting the information content of money growth.

## 6 Conclusion

In this paper we use a early warning model in order to analyse the risk of a low inflation regime in the euro area. In particular, we adopt a monetary perspective and extend the work of Amisano and Fagan (2013), who developed a money-based early warning indicator for shifts in inflation regimes. In our specification inflation is characterized by a regime-switching model in which the economy can potentially switch between three states: "Low", "Medium" (or under control) and "High" inflation. Moreover, transition probabilities from one regime to another are allowed to vary over time as a function of monetary variables.

An important feature of this approach is that it allows to exploit the information content of these variables as ‘warning signals’ of the risk of the departure of inflation from the price stability regime.

We applied the model to euro area quarterly data spanning from 1975 Q1 to 2013 Q2 and we employed Bayesian estimation techniques. The results presented can be interpreted as signalling a relevant increase in the risk of EA inflation entering the Low inflation regime. In particular, estimations conducted with information up to the second quarter of 2013 show that the risks of a low inflation regime have been increasing in the course of the last six quarters. Finally, we find that money growth plays a significant role in the assessment of such risks: we show that alternative model specifications return weaker warning signals than those provided by money growth.

## A Data

### A.1 Euro Area

From 1992Q1 to 2012Q3 we employed official euro area data from the ECB website. For the period before 1992 we used German data. In particular, the Bundesbank real time data base was the source for data spanning from 1962Q1 to 1998Q4 while earlier (yearly) data were obtained from Buba 1988 and interpolated using the BFL interpolation procedure to obtain quarterly data. Data on loans to private sector are only available from 1980Q1 and provided by the ECB.



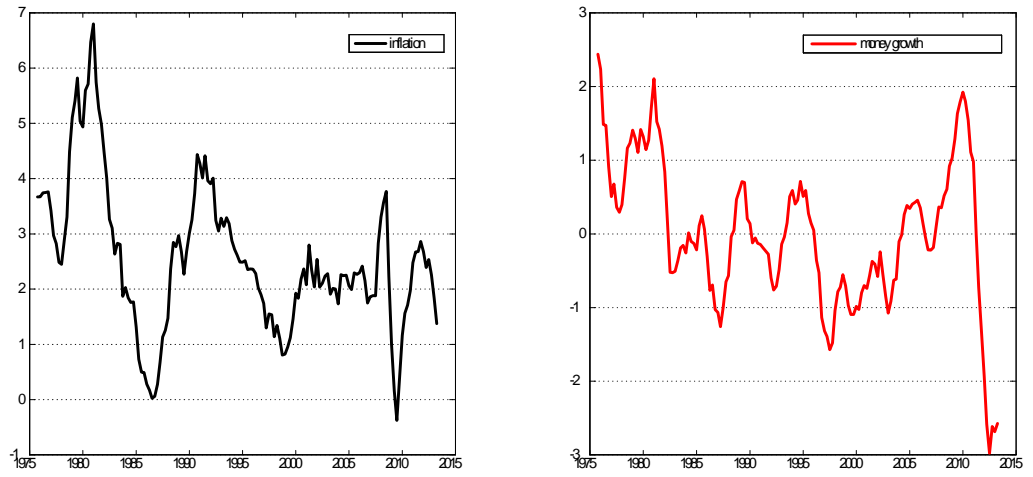
## **A.2 Japan**

The sources for the CPI index and for the money supply (M2) series, both starting in 1957Q1, are the Japanese Statistics Bureau and the Bank of Japan, respectively. Data on credit to private non-financial sector (from all sectors) start in 1964Q4 and are provided by the Bank for International Settlements

## **A.3 US**

The source of the data is the Federal Reserve Economic Data provided by the Federal Reserve Bank of St. Louis. Quarterly data on the monetary aggregate (M2) are available since 1959Q4; therefore we used yearly data on M2 from Mitchell and Ame (1998), subject to quarterly BFL interpolation. Data on credit to private non-financial sector (from all sectors) start in 1952Q1 and are provided by the Bank for International Settlements

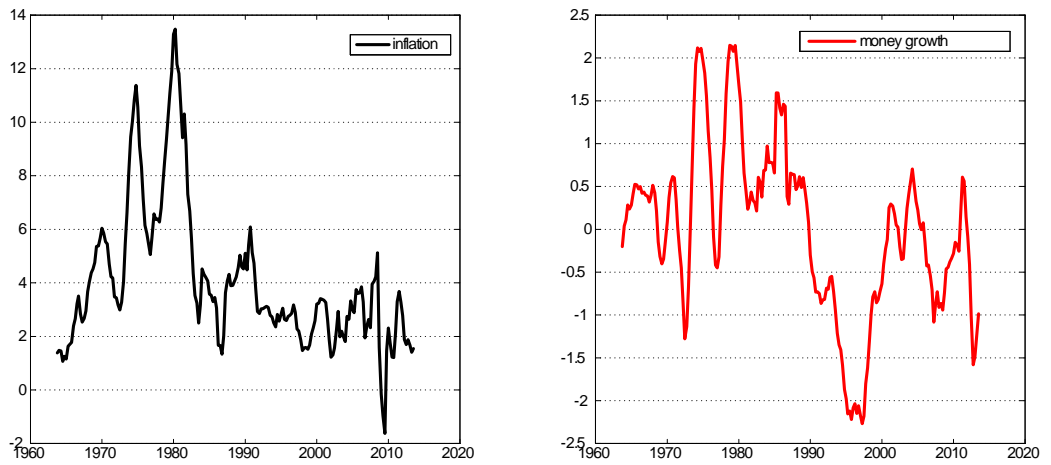
Figure A.1: Inflation and money growth indicator



EA data, estimation sample: 1975Q1-2013Q2



Japan data, estimation sample: 1964Q4-2013Q3



US data, estimation sample: 1950Q1-2013Q4

## B Model estimation

### B.1 Prior specification

Priors on the ordered probit specification for regimes are Gaussian centered on the values described in Section (2) and prior standard deviations set to 0.5. The slope coefficient on money growth is centered on 0.2 and with prior standard deviation equal to 0.5. The autoregressive coefficient is Gaussian with mean equal to 0.90 and standard deviation equal to 0.5. The state-specific means are endowed with a weak prior for the medium and high inflation states, respectively centered on 1.95% and 6% and with prior standard deviations of 0.3 and 1.0 respectively. The low inflation mean is calibrated at 0.50%.

The regime-specific standard deviations of shocks are given an inverse Gamma distribution centered on the standard deviation of residuals obtained by estimating a linear AR model for inflation data prior to the sample used for estimation, with a degrees of freedom parameter set equal to 4. This is a weakly informative prior.

Several robustness exercises have been conducted to assess the role of the priors and the results have been qualitatively confirmed for a range of alternative prior specifications.

### B.2 Simulation strategy

Let us call  $\mathbf{s}$  the  $(T \times 1)$  vector with discrete states  $s_t$ ,  $t = 1, 2, \dots, T$ ;  $\mathbf{s}^*$  the  $(T \times 1)$  vector with continuous latent variable  $s_t^*$ ,  $t = 1, 2, \dots, T$ ;  $\mathbf{y}$  the  $(T \times 1)$  vector with observations on endogenous variable  $y_t$ ,  $t = 1, 2, \dots, T$ ;  $\mathbf{z}$  the  $(T \times 1)$  vector with observations on indicator variables  $\mathbf{z}_t$ ,  $t = 1, 2, \dots, T$ ;  $\theta$  the vector with all parameters in the model defined as

$$\theta = \begin{bmatrix} \theta_{me} \\ \theta_{se} \end{bmatrix},$$

where  $\theta_{me}$  contains all free parameters in the measurement equation (the 3-regime AR(1) specification for inflation), and  $\theta_{se}$  contains all parameters appearing in the state equation (the ordered probit specification for transition probabilities). Then the Gibbs-data augmentation strategy is as follows:

- draw from  $p(\mathbf{s}, \mathbf{s}^* | \mathbf{y}, \mathbf{z}, \theta)$  using the sequential partition:

$$p(\mathbf{s}, \mathbf{s}^* | \mathbf{y}, \mathbf{z}, \theta) = p(\mathbf{s} | \mathbf{y}, \mathbf{z}, \theta) \times p(\mathbf{s}^* | \mathbf{s}, \mathbf{y}, \mathbf{z}, \theta)$$

(the first factor drawn using filtering and simulation smoother on discrete states and the second factor by drawing from truncated distributions the shocks in the state equation)

- draw from  $p(\theta|\mathbf{s}, \mathbf{s}^*, \mathbf{y}, \mathbf{z})$  as follows (rem that conditioning on relevant latent variables the parameters in the measurement and state equations are independent, since shocks in these are independent)

$$p(\theta|\mathbf{s}, \mathbf{s}^*, \mathbf{y}, \mathbf{z}) = p(\theta_{me}|\mathbf{s}, \mathbf{s}^*, \mathbf{y}, \mathbf{z}) \times p(\theta_{se}|\mathbf{s}, \mathbf{s}^*, \mathbf{y}, \mathbf{z})$$

$$p(\theta_{me}|\mathbf{s}, \mathbf{s}^*, \mathbf{y}, \mathbf{z}) = p(\theta_{me}|\mathbf{s}, \mathbf{y})$$

$$p(\theta_{se}|\mathbf{s}, \mathbf{s}^*, \mathbf{y}, \mathbf{z}) = p(\theta_{se}|\mathbf{s}^*, \mathbf{z})$$

These two steps can be performed by using the same algorithm as in Amisano and Fagan (2013).

### B.2.1 Drawing parameters

Drawing from the posterior distribution of the parameters in the autoregressive equation is straightforward. For additional details we refer to Amisano and Fagan (2013). Drawing the  $\beta$  parameters in the ordered probit specification for transition probabilities can be done just by trivial extension of the algorithm used in Amisano and Fagan (2013). As for the threshold parameters  $\gamma$ , they have a conditional posterior distribution which is uniform over a domain defined by draws on the continuous latent variables, as described in Albert and Chib (1993), and therefore they can be easily simulated.

## References

- ALBERT, J. A., AND S. CHIB (1993): “Bayesian analysis of binary and polychotomous response data”, *Journal of the American Statistical Association*, 88, 669-679.
- AMISANO, G., AND G. FAGAN (2013): “Money growth and inflation: A regime switching approach”, *Journal of International Money and Finance*, 33, 118-145.
- AMISANO, G., AND R. COLAVECCHIO (2013): “Money Growth and Inflation: evidence from a Markov Switching Bayesian VAR”, *DEP Discussion Papers Macroeconomics and Finance Series*, 4/2013, Hamburg University.
- BENHABIB, J., S. SCHMITT-GROHE, AND M. URIBE (2001): “The Perils of Taylor Rules”, *Journal of Economic Theory*, 96, 40-69.
- CHRISTENSEN, J. H. E., J. A. LOPEZ, AND G. D. RUDEBUSCH (2011): “Pricing Deflation Risk with U.S. Treasury Yields”, *Working Paper*, Federal Reserve Bank of San Francisco.

- CHRISTIANO L. J., AND M. ROSTAGNO (2001): “Money growth monitoring and the Taylor rule”, *NBER Working Paper* no. 8539.
- COENEN, G., AND A. WARNE (2013): “Risks to price stability and the zero lower bound: a real-time assessment for the Euro Area”, *mimeo* (working paper).
- DECRESSIN, J., AND D. LAXTON (2009): “Gauging Risks for Deflation”, *IMF Staff Position Paper* no. 19238.
- FLECKENSTEIN M., F. A. LONGSTAFF, AND H. LUSTIG (2013): “Deflation Risk”, *NBER Working Paper* no. 19238.
- IMF (2013): “The Dog That Didn’t Bark: Has Inflation Been Muzzled or Was It Just Sleeping?”, *World Economic Outlook*, International Monetary Fund, April.
- IMF (2013): “Global Prospects and Policies”, *World Economic Outlook*, International Monetary Fund, April.
- KILIAN, L, AND S. MANGANELLI (2007): “Quantifying the Risk of Deflation”, *Journal of Money, Credit, and Banking*, 39, 561-590.
- KITSUL Y., AND J. WRIGHT (2012): “The Economics of Options-Implied Inflation Probability Density Functions”, *Working paper Johns Hopkins University*.
- KUMAR M., T.BAIG, J. DECRESSIN, C. FAULKNER-MACDONAGH, AND T. FEYZIOGLU (2003): “Deflation: Determinants, Risks, and Policy Options”, *IMF Occasional Paper* 221.

Table 1: Data used in the application

<i>country</i>	<i>source</i>	<i>start date</i>	<i>end date</i>	<i>money</i>	<i>inflation</i>	<i>credit</i>	<i>lag order</i>	<i>MA order</i>
Euro Area	ECB, Bundesbank	1962Q1	2013Q2	M3	HICP	loans to private non-fin. sector	9	5
Japan	BoJ, BIS	1957Q1	2013Q2	M2	CPI	loans to private non-fin. sector	9	5
US	FRED, REF, BIS	1950Q1	2013Q2	M2	CPI	loans to private non-fin. sector	9	5

The effective sample start indicates the first observation of the sample after performing the necessary adjustments of the monetary aggregate.

Table 2: Posterior simulation, Euro Area

	prior mean	prior sd	prior low q	prior up q	post mean	post sd	post low q	post up q
$\rho$	0.90	0.50	-0.10	1.90	0.88	0.03	0.81	0.94
$\mu_1$	0.50	0.00	0.50	0.50	0.50	0.00	0.50	0.50
$\mu_2$	1.95	0.30	1.36	2.54	1.89	0.27	1.39	2.43
$\mu_3$	6.00	1.00	4.07	7.94	6.16	0.83	4.50	7.77
$\sigma_1$	0.56	0.31	0.27	1.30	0.58	0.19	0.28	1.02
$\sigma_2$	0.56	0.29	0.27	1.29	0.27	0.03	0.23	0.33
$\sigma_3$	0.56	0.29	0.27	1.28	0.44	0.10	0.30	0.69
$\beta_0$	0.20	0.50	-0.78	1.19	0.23	0.19	-0.13	0.62
$\beta_1$	-0.85	0.50	-1.84	0.14	-0.85	0.40	-1.62	-0.03
$\beta_2$	2.04	0.50	1.07	3.02	1.95	0.26	1.43	2.43
$\beta_3$	2.57	0.50	1.60	3.55	2.25	0.36	1.57	2.97
$\gamma_{21}$	1.50	0.12	1.31	1.69	1.50	0.12	1.31	1.69
$\gamma_{22}$	3.45	0.14	3.21	3.69	3.50	0.14	3.23	3.69
$\gamma_{23}$	1.50	0.12	1.31	1.69	1.50	0.12	1.31	1.69

$z_t$ =standardized MA(5) of lagged (9) M3 growth; estimation sample: 1975Q1-2013Q2

Table 3: Posterior simulation, Japan

	prior mean	prior sd	prior low q	prior up q	post mean	post sd	post low q	post up q
$\rho$	0.91	0.50	-0.08	1.90	0.90	0.03	0.83	0.95
$\mu_1$	-0.01	1.00	-1.94	1.96	-0.08	0.56	-1.24	1.00
$\mu_2$	1.95	0.30	1.38	2.53	1.91	0.30	1.33	2.49
$\mu_3$	6.00	1.00	4.07	7.94	6.33	1.00	4.32	8.29
$\sigma_1$	0.56	0.28	0.27	1.26	0.43	0.07	0.32	0.57
$\sigma_2$	0.56	0.30	0.27	1.31	0.71	0.13	0.49	1.01
$\sigma_3$	0.56	0.30	0.27	1.32	2.57	0.53	1.81	3.87
$\beta_0$	0.20	0.50	-0.77	1.17	0.43	0.23	0.03	0.94
$\beta_1$	-0.84	0.50	-1.82	0.16	-1.18	0.38	-1.93	-0.40
$\beta_2$	2.06	0.50	1.06	3.02	1.41	0.29	0.82	1.95
$\beta_3$	2.57	0.49	1.60	3.52	2.20	0.40	1.45	3.02
$\gamma_{21}$	1.50	0.11	1.31	1.69	1.50	0.12	1.31	1.69
$\gamma_{22}$	3.45	0.14	3.21	3.69	3.48	0.14	3.22	3.69
$\gamma_{23}$	1.50	0.12	1.31	1.69	1.52	0.11	1.32	1.69

$z_t$ =standardized MA(5) of lagged (9) M2 growth; estimation sample: 1970Q4-2013Q2

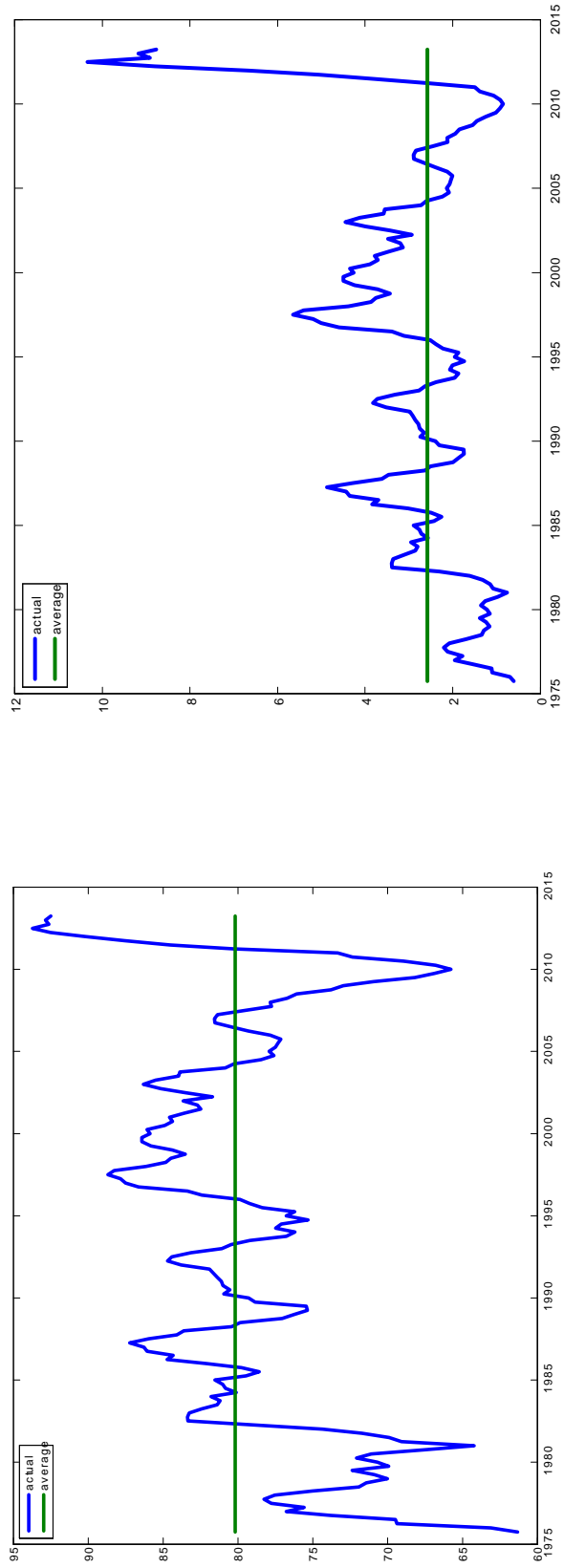


Table 4: Posterior simulation, US

	prior mean	prior sd	prior low q	prior up q	post mean	post sd	post low q	post up q
$\rho$	0.90	0.50	-0.08	1.87	0.96	0.04	0.86	1.01
$\mu_1$	0.50	0.00	0.50	0.50	0.50	0.00	0.50	0.50
$\mu_2$	1.94	0.30	1.36	2.53	1.99	0.30	1.40	2.58
$\mu_3$	6.03	0.99	4.07	7.98	6.27	1.14	4.13	8.64
$\sigma_1$	0.56	0.30	0.27	1.32	0.84	0.54	0.24	1.94
$\sigma_2$	0.57	0.31	0.27	1.32	0.46	0.17	0.27	0.98
$\sigma_3$	0.56	0.29	0.27	1.28	0.80	0.29	0.27	1.27
$\beta_0$	0.20	0.50	-0.79	1.17	0.23	0.32	-0.49	0.73
$\beta_1$	-0.83	0.50	-1.84	0.15	-0.98	0.42	-1.76	-0.10
$\beta_2$	2.05	0.50	1.06	3.01	2.02	0.39	1.26	2.79
$\beta_3$	2.57	0.50	1.58	3.54	2.64	0.38	1.88	3.37
$\gamma_{21}$	1.50	0.12	1.31	1.69	1.50	0.12	1.31	1.69
$\gamma_{22}$	3.45	0.14	3.21	3.69	3.47	0.14	3.22	3.69
$\gamma_{23}$	1.50	0.12	1.31	1.69	1.49	0.11	1.32	1.69

$z_t$ =standardized MA(5) of lagged (9) M2 growth; estimation sample: 1963Q4-2013Q2

Figure 1: Euro Area: Time-varying transition probabilities



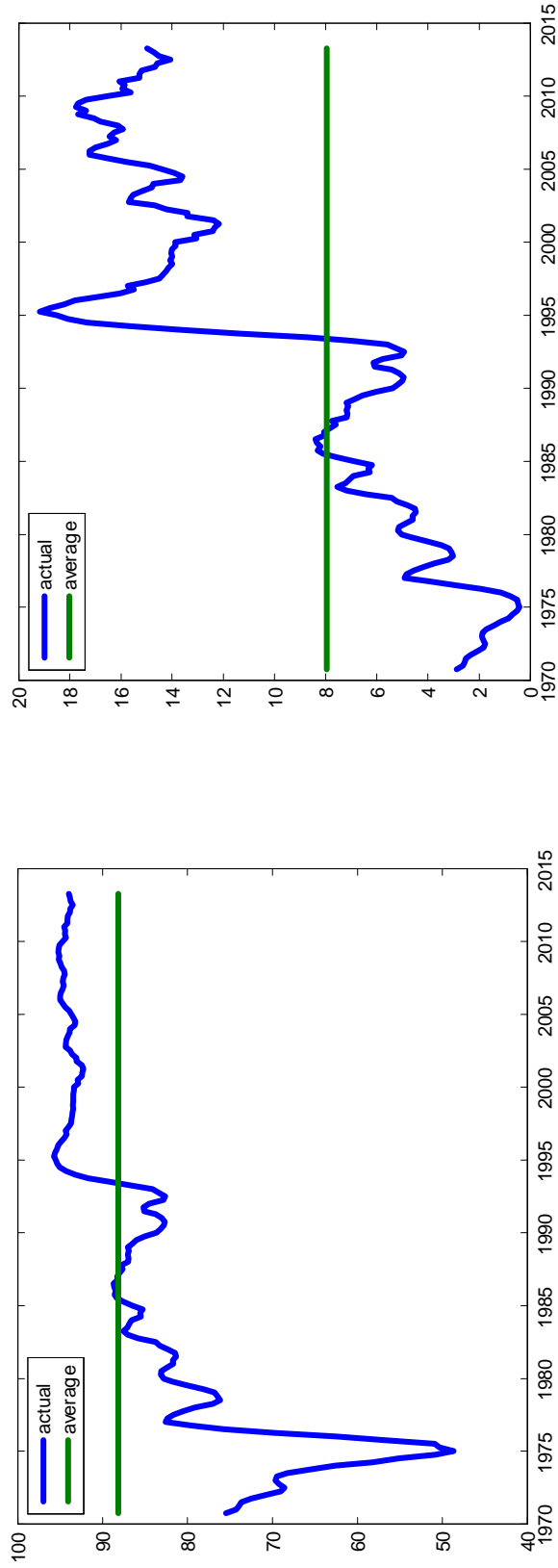
$p_{1,t}$ : prob to stay in regime 1 when starting from regime 1

$p_{2,t}$ : prob to move to regime 1 when starting from regime 2

---

Note: transition probabilities are computed at the posterior mean of parameter estimates and using actual money growth.

Figure 2: Japan: Time-varying transition probabilities



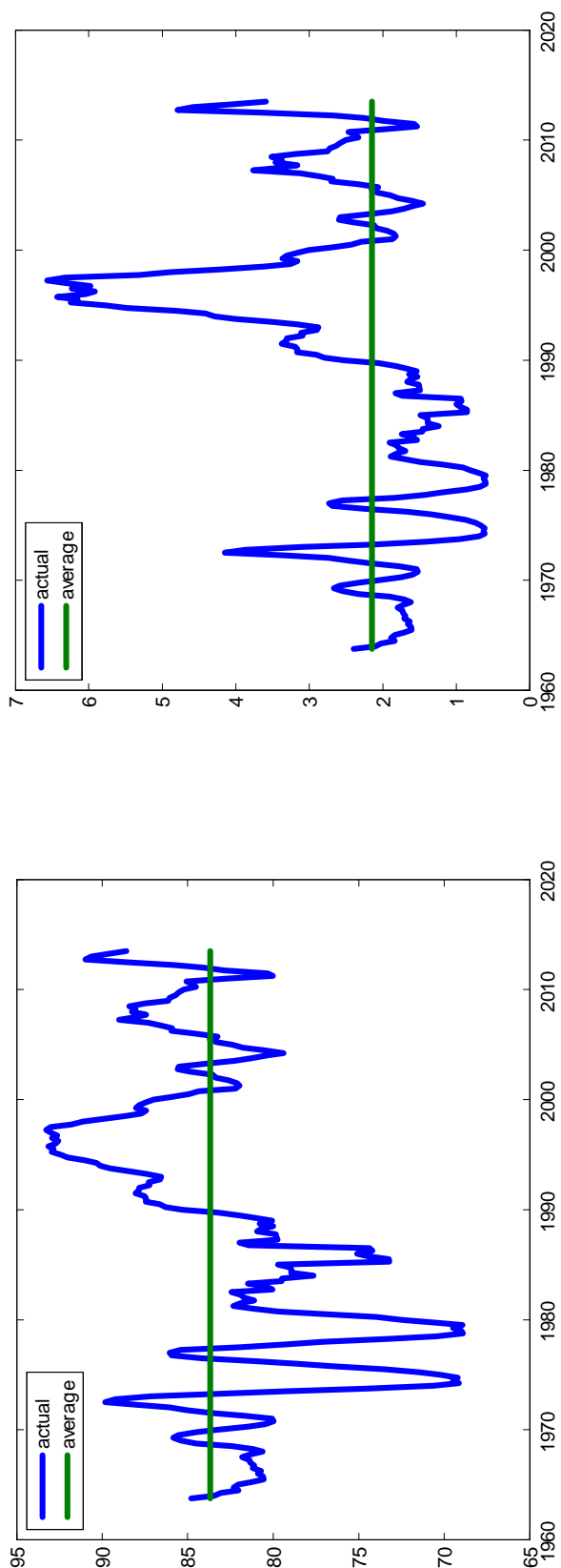
$p_{1,t}$ : prob to stay in regime 1 when starting from regime 1

$p_{2,t}$ : prob to move to regime 1 when starting from regime 2

---

Note: transition probabilities are computed at the posterior mean of parameter estimates and using actual money growth.

Figure 3: US: Time-varying transition probabilities



$p_{11,t}$ : prob to stay in regime 1 when starting from regime 1

$p_{21,t}$ : prob to move to regime 1 when starting from regime 2

---

Note: transition probabilities are computed at the posterior mean of parameter estimates and using actual money growth.

Table 5: Euro Area: Transition probabilities, smoothed probabilities and one step ahead probabilities computed at 2013Q2

Panel A: transition probabilities as determined by current monetary conditions				
	st+1 = Low	st+1 = Medium	st+1 = High	smoothed
st = Low	92.5	7.3	0.2	45.1
st = Medium	8.8	89.6	1.6	54.1
st = High	4.9	38.9	56.2	0.8
one step ahead	46.5	52.1	1.4	

Panel B: transition probabilities computed at "average" monetary conditions				
	st+1 = Low	st+1 = Medium	st+1 = High	
st = Low	80.2	18.9	1.0	
st = Medium	2.6	91.4	6.0	
st = High	1.2	21.5	77.3	
one step ahead	37.6	58.1	4.3	

*Note: Panel A reports transition probabilities, smoothed probabilities and one step ahead probabilities computed at the end of the sample used for estimation (1975Q1-2013Q2) and using actual monetary conditions. Panel B reports the corresponding probabilities computed using neutral values for monetary conditions.*

Table 6: Euro Area: Transition probabilities, smoothed probabilities and one step ahead probabilities computed at 2013Q2

Panel A: transition probabilities as determined by current credit conditions			
	st+1 = Low	st+1 = Medium	st+1 = High
st = Low	84.5	14.9	0.6
st = Medium	4.4	91.9	3.7
st = High	1.7	25.5	72.8
one step ahead	27.3	64.2	8.6

Panel B: transition probabilities computed at "average" credit conditions			
	st+1 = Low	st+1 = Medium	st+1 = High
st = Low	79.3	19.6	1.0
st = Medium	2.9	91.6	5.6
st = High	1.0	21.1	78.9
one step ahead	24.8	64.9	10.4

*Note: Panel A reports transition probabilities, smoothed probabilities and one step ahead probabilities computed at the end of the sample used for estimation (1983Q1-2013Q2) and using actual credit conditions. Panel B reports the corresponding probabilities computed using neutral values for credit conditions.*

Table 7: Japan: Transition probabilities, smoothed probabilities and one step ahead probabilities computed at 2013Q2

Panel A: transition probabilities as determined by current monetary conditions				
	st+1 = Low	st+1 = Medium	st+1 = High	smoothed
st = Low	94.0	5.9	0.1	82.2
st = Medium	15.0	84.3	0.7	17.6
st = High	3.4	34.6	62.0	0.1
one step ahead	79.9	19.8	0.3	

Panel B: transition probabilities computed at "average" monetary conditions				
	st+1 = Low	st+1 = Medium	st+1 = High	
st = Low	88.1	11.5	0.4	
st = Medium	8.0	90.1	1.9	
st = High	1.4	23.6	75.0	
one step ahead	73.9	25.4	0.7	

*Note: Panel A reports transition probabilities, smoothed probabilities and one step ahead probabilities computed at the end of the sample used for estimation (1975Q1-2013Q2) and using actual monetary conditions. Panel B reports the corresponding probabilities computed using neutral values for monetary conditions.*

Table 8: US: Transition probabilities, smoothed probabilities and one step ahead probabilities computed at 2013Q2

Panel A: transition probabilities as determined by current monetary conditions				
	st+1 = Low	st+1 = Medium	st+1 = High	smoothed
st = Low	88.6	11.1	0.3	23.8
st = Medium	3.6	91.6	4.8	61.9
st = High	0.8	17.1	82.1	14.3
one step ahead	23.4	61.8	14.8	

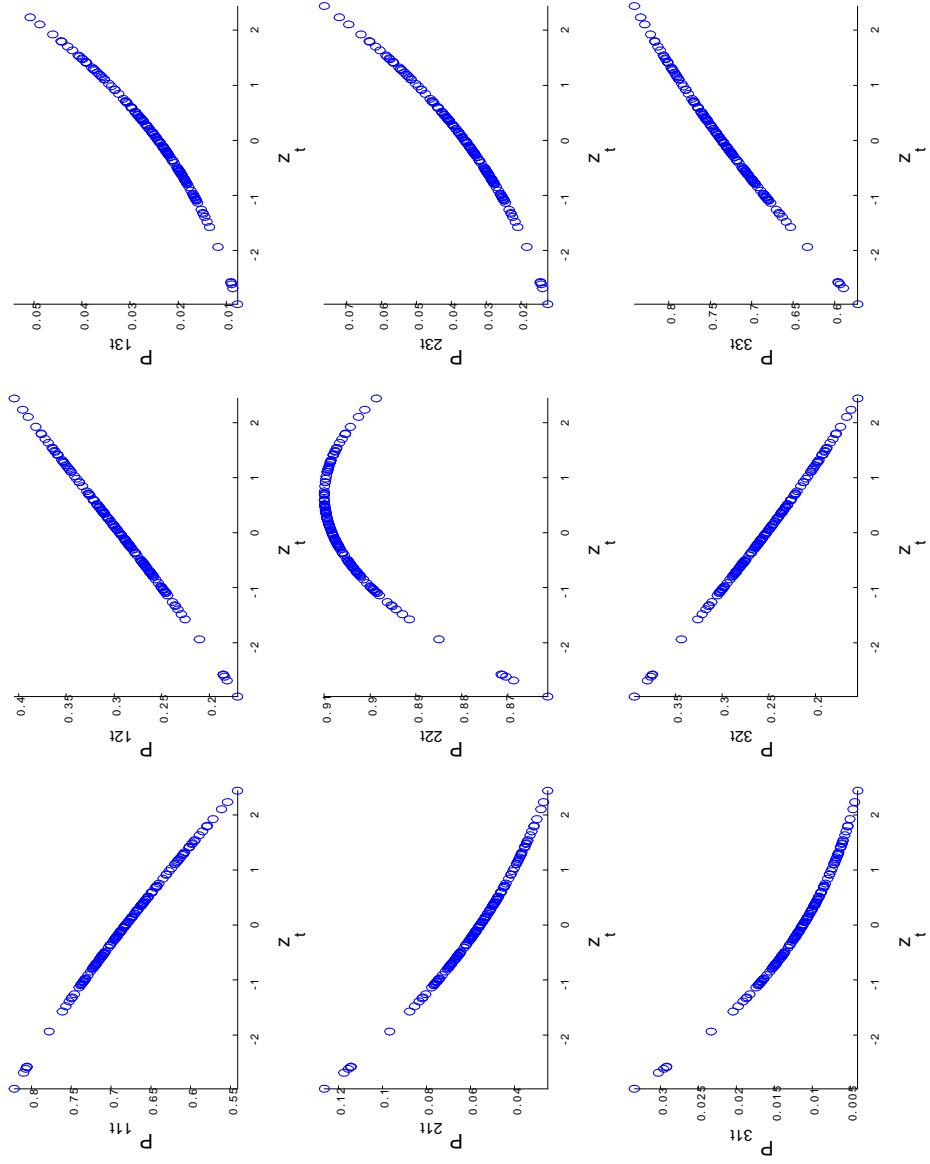
  

Panel B: transition probabilities computed at "average" monetary conditions				
	st+1 = Low	st+1 = Medium	st+1 = High	
st = Low	83.7	15.7	0.7	
st = Medium	2.1	90.4	7.5	
st = High	0.4	12.2	87.3	
one step ahead	21.2	61.3	17.0	

*Note: Panel A reports transition probabilities, smoothed probabilities and one step ahead probabilities computed at the end of the sample used for estimation (1975Q1-2013Q2) and using actual monetary conditions. Panel B reports the corresponding probabilities computed using neutral values for monetary conditions.*



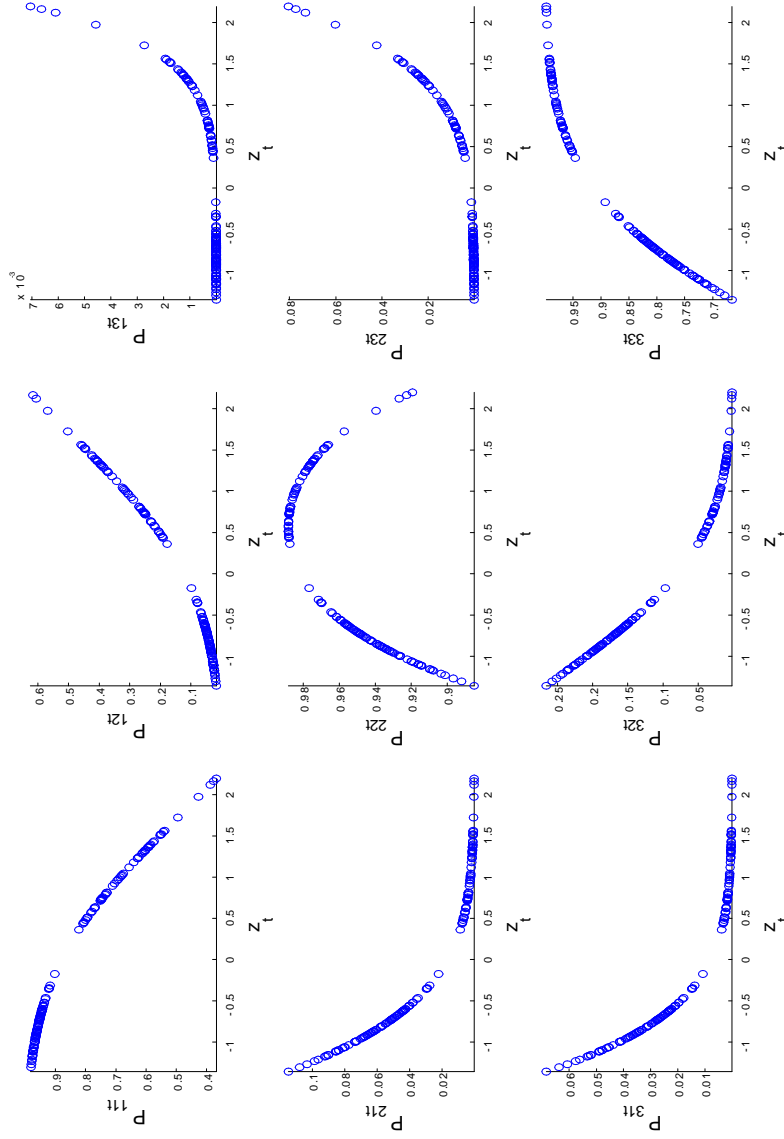
Figure 4: Time-varying transition probabilities as function of the indicator variable, Euro Area




---

Time-varying transition probabilities are computed using the posterior mean values of the parameters.

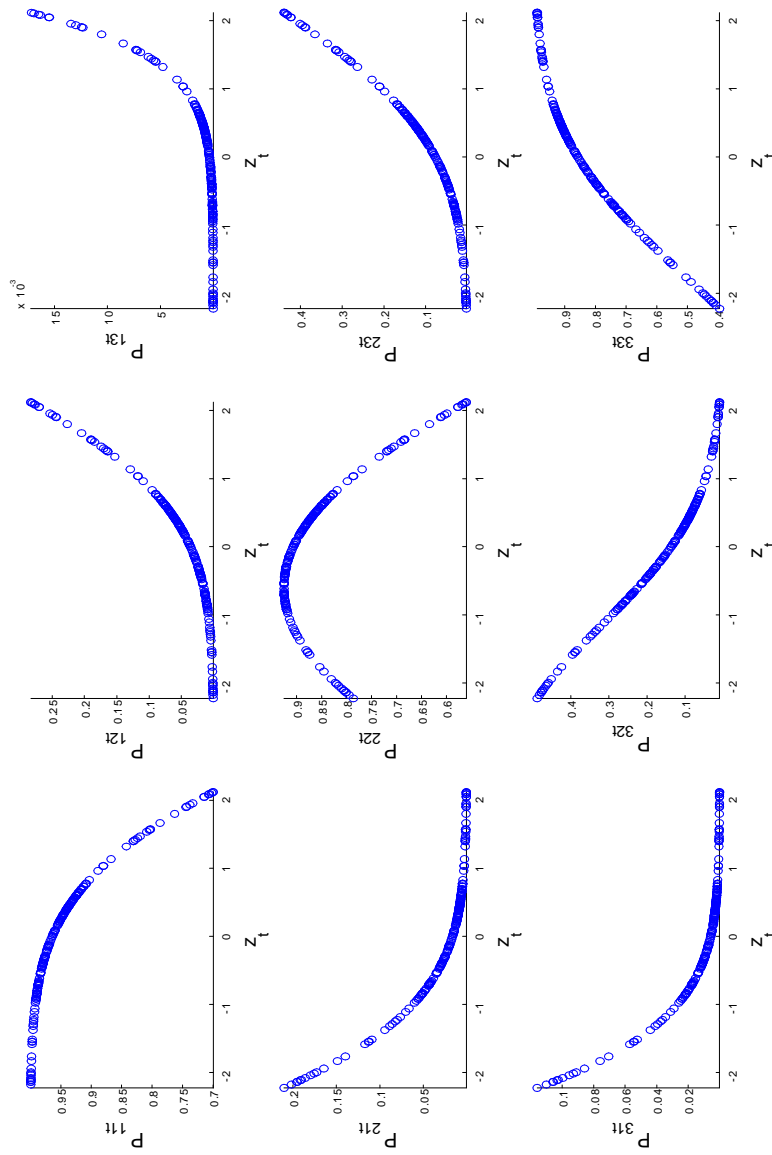
Figure 5: Time-varying transition probabilities as function of the indicator variable, Japan




---

Time-varying transition probabilities are computed using the posterior mean values of the parameters.

Figure 6: Time-varying transition probabilities as function of the indicator variable, US




---

Time-varying transition probabilities are computed using the posterior mean values of the parameters.

Figure 7: Smoothed probabilities for inflation regimes, Euro Area

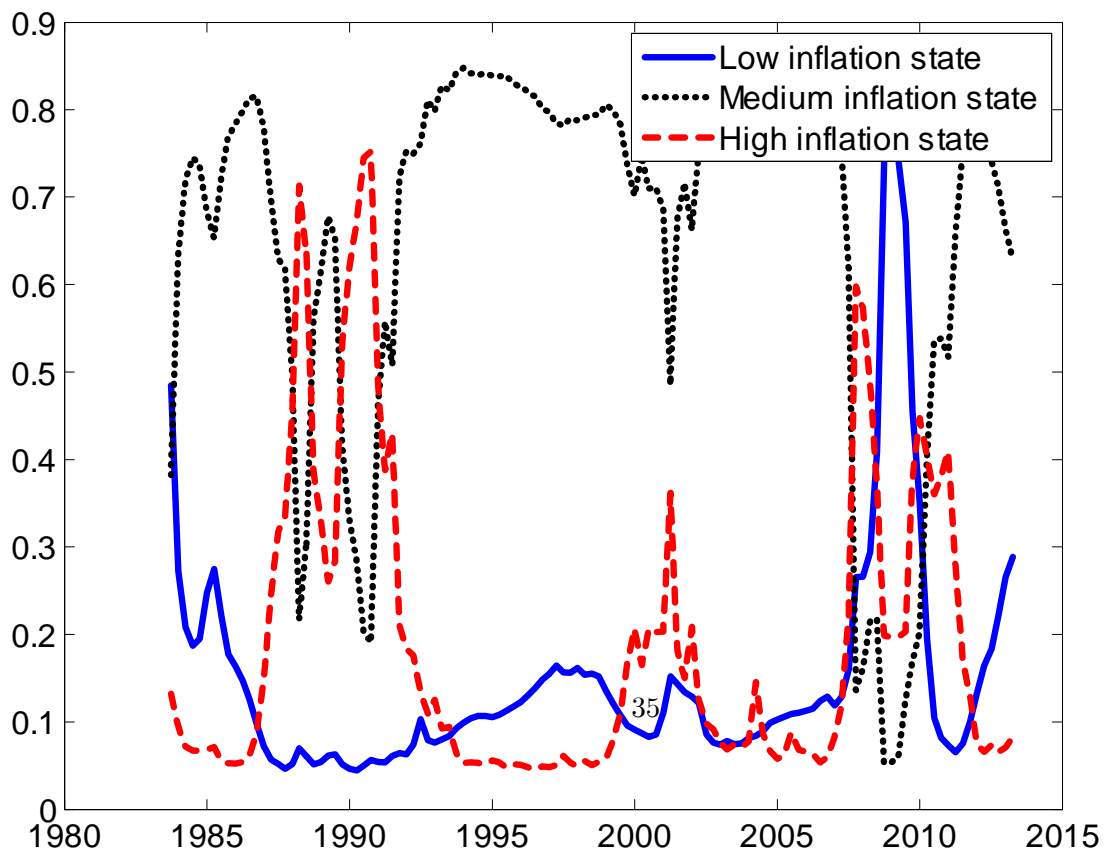
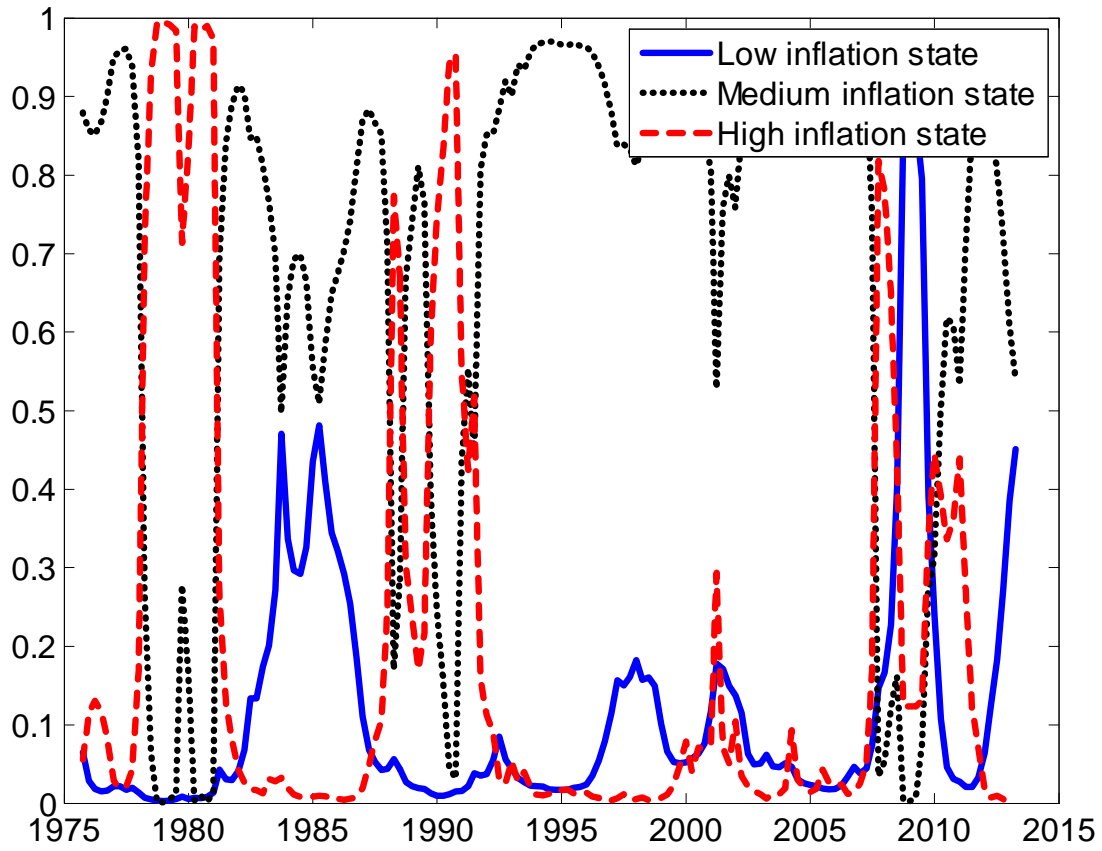
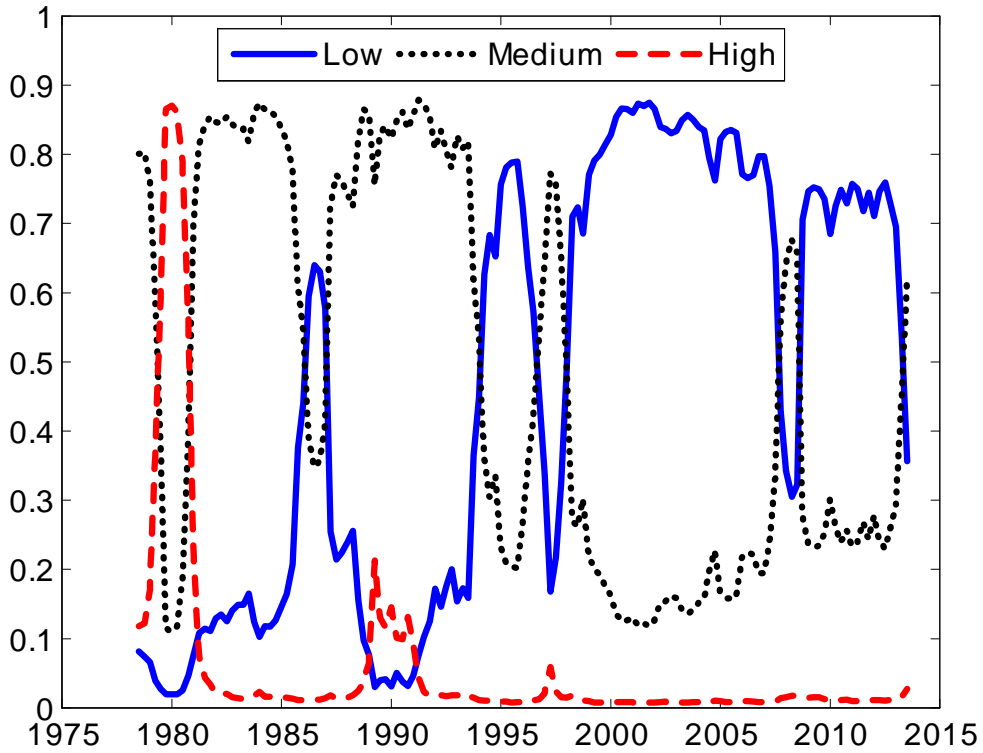
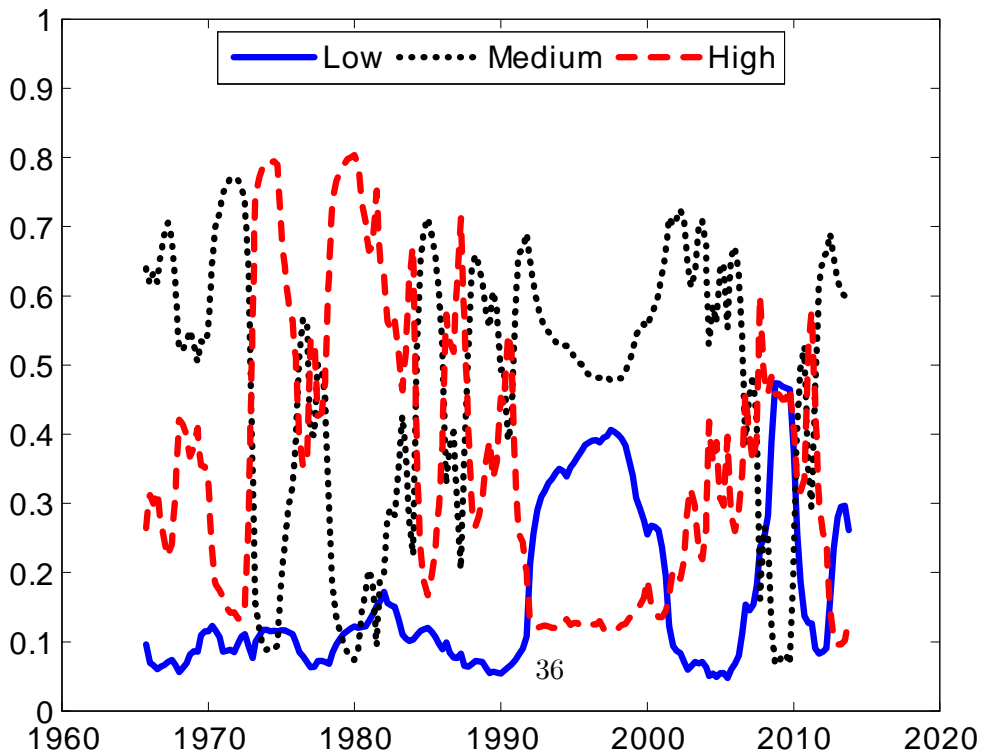


Figure 8: Smoothed probabilities for inflation regimes, Japan and US



Japan: Estimated smoothed prob obtained with  $z_t$ =M2 growth (smpl: 1964Q4-2013Q3)



US: Estimated smoothed prob obtained with  $z_t$ =M2 growth (smpl: 1950Q1-2013Q4)