

Hildebrandt, Lutz; Tischer, Sven

Working Paper

Brand equity: How is it affected by critical incidents and what moderates the effect

SFB 649 Discussion Paper, No. 2012-062

Provided in Cooperation with:

Collaborative Research Center 649: Economic Risk, Humboldt University Berlin

Suggested Citation: Hildebrandt, Lutz; Tischer, Sven (2012) : Brand equity: How is it affected by critical incidents and what moderates the effect, SFB 649 Discussion Paper, No. 2012-062, Humboldt University of Berlin, Collaborative Research Center 649 - Economic Risk, Berlin

This Version is available at:

<https://hdl.handle.net/10419/79624>

Standard-Nutzungsbedingungen:

Die Dokumente auf EconStor dürfen zu eigenen wissenschaftlichen Zwecken und zum Privatgebrauch gespeichert und kopiert werden.

Sie dürfen die Dokumente nicht für öffentliche oder kommerzielle Zwecke vervielfältigen, öffentlich ausstellen, öffentlich zugänglich machen, vertreiben oder anderweitig nutzen.

Sofern die Verfasser die Dokumente unter Open-Content-Lizenzen (insbesondere CC-Lizenzen) zur Verfügung gestellt haben sollten, gelten abweichend von diesen Nutzungsbedingungen die in der dort genannten Lizenz gewährten Nutzungsrechte.

Terms of use:

Documents in EconStor may be saved and copied for your personal and scholarly purposes.

You are not to copy documents for public or commercial purposes, to exhibit the documents publicly, to make them publicly available on the internet, or to distribute or otherwise use the documents in public.

If the documents have been made available under an Open Content Licence (especially Creative Commons Licences), you may exercise further usage rights as specified in the indicated licence.

SFB 649 Discussion Paper 2012-062

Brand equity – how is it affected by critical incidents and what moderates the effect

Sven Tischer *
Lutz Hildebrandt *



* Humboldt-Universität zu Berlin, Germany

This research was supported by the Deutsche Forschungsgemeinschaft through the SFB 649 "Economic Risk".

<http://sfb649.wiwi.hu-berlin.de>
ISSN 1860-5664

SFB 649, Humboldt-Universität zu Berlin
Spandauer Straße 1, D-10178 Berlin



SFB 649 ECONOMIC RISK BERLIN

Brand equity – how is it affected by critical incidents and what moderates the effect ¹

Sven Tischer and Lutz Hildebrandt²

Abstract

To explore how occurring critical incidents affect customer-brand relations, this study measures the impact on the basis of an online experiment. For this purpose, 1,122 usable responses are gathered considering the smartphone brands of Apple and Nokia as well as different scenarios. The respective reactions to these negative incidents are evaluated using the concept of customer-based brand equity. More precisely, a structure equation model is specified and differences in latent factor means are estimated taking into account perceived quality, various brand associations, loyalty and overall brand equity. The findings indicate that brand equity dimensions are not equally affected. Moreover, the results demonstrate that both brand equity and the business relationship before crisis moderate the effect of distinct critical incidents.

Key words

Brand equity, critical incidents, negative publicity, structure equation modeling, online experiment

JEL Classification:

M14, M31, C12, C14, C38, C93

¹ This research was supported by the Deutsche Forschungsgemeinschaft through the SFB 649 "Economic Risk".
SFB 649, Humboldt-Universität zu Berlin, Spandauer Straße 1, D-10178 Berlin

² Humboldt-Universität zu Berlin, School of Business and Economics, Institute of Marketing, Spandauer Straße 1,
D-10178 Berlin, { tischesv, hildebr }@wiwi.hu-berlin.de

1 Introduction

In comparison to the past, relations between customers and brands are less exclusive today (Rust, Lemon & Zeithaml, 2004). Therefore, in order to retain competitive advantages, it is becoming much more important to improve or, at least, to maintain established customer-brand relations. As a result, marketing research has been intensifying to figure out which incidents destabilize these relationships (e.g. Keaveaney, 1995) in which ways (e.g. Aaker, Fournier & Brasel, 2004; Klein & Dawar, 2004).

Roos (2002) defines such critical incidents (CI) as extraordinary events which are perceived or recalled negatively by customers before purchase, during purchase or during consumption. The possible impact of these negative perceptions, especially on loyalty, have led to many qualitative studies to be analyzed (e.g. Bitner, Booms & Tetreault, 1990; Gardial, Fisher, Flint & Woodruff, 1996; Roos, Edvardsson, & Gustafsson, 2004). In contrast, just a few studies quantify effects of critical incidents, but most of them focus on service failures (e.g. Maxham & Netemeyer, 2002; Gustafsson, Johnson & Roos, 2005; van Doorn & Verhoef, 2008). The remaining quantitative studies analyze either product harm crises (Ahluwalia, Burnkrant & Unnava, 2000; Dawar & Pillutla, 2000; Klein & Dawar, 2004; Cleeren, Dekimpe & Helsen, 2008; Dawar & Lei, 2009) or unethical marketing behavior (Ingram, Skinner & Taylor, 2005).

All of these studies aim to shed some light on negative information processing in the case of occurring critical incidents in order to be able to develop impact-minimizing marketing strategies. Consequently, the following questions arise: When will the customer-brand relation be damaged and, if so, to which extent? Which brand dimensions are affected by critical incidents and should be addressed afterwards?

Does the kind of critical incident matter? Are there moderators which influence the information processing?

Addressing these questions, this study follows Dawar and Pillutla (2000) and uses the concept of customer-based brand equity (CBBE) to quantify relational changes. For this purpose, an experimental design was developed reducing some criticized weaknesses of such experiments. By focusing on product brands, this study gains insights into immediate reactions to different critical incidents considering various brand strengths (Ahluwalia et al., 2000; Dawar & Pillutla, 2000; Cleeren et al., 2008) and previous relations (Ahluwalia, 2002; Dawar & Lei, 2009; van Doorn & Verhoef, 2008). As a result, this study is the first which explores an integrated relationship-branding perspective and compares the effect of distinct critical incidents regarding various brand equity dimensions.

The article first reviews literature to develop the conceptual framework and hypotheses. The following sections present the research methodology, the sample and the results. In the end, discussion and limitations of this research are presented.

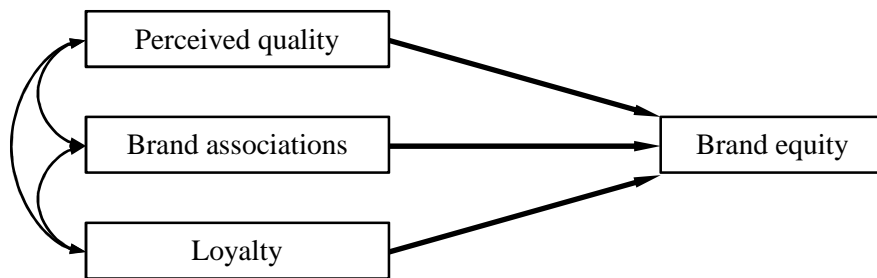
2 Conceptual framework

2.1 Brand equity and its dimensions

Given the increased importance of brand equity since its conception by Aaker (1991), various brand measures have been developed. Ailawadi, Lehmann and Neslin (2003) classify these measures as product-market outcomes, financial market outcomes or customer mind-set measures. In order to quantify changes in customer-brand relations, this study employs customer mind-set measures adapting the multidimensional concept of CBBE defined by Keller (1993) as “differential effect that brand knowledge has on consumer response to the marketing of that brand”.

Based on the 4 CBBE-dimensions proposed by Aaker (1996), only perceived quality, brand associations and loyalty are taken into account to analyze relational changes (see Figure 1). This study excludes the fourth dimension (awareness) because a person unaware of a brand does not possess a customer-brand relation. Hence, there is nothing to be damaged.

Figure 1: Conceptual model of brand equity including relevant dimensions



Perceived quality is, in contrast to objective quality, a consumer's subjective judgement about "a product's overall excellence or superiority" (Zeithaml, 1988). This means, whereas objective quality refers to "measureable and verifiable superiority on some predetermined ideal standard" (Zeithaml, 1988), perceived quality depends more on personal product experience, personal needs and the individual consumption situation (Yoo, Donthu & Lee, 2000). Furthermore, perceived quality represents a highly abstract global assessment rather than the sum of individual quality elements (Yoo & Donthu, 2001). Consequently, following Zeithaml (1988), high perceived quality beguiles consumers into buying this brand rather than competing ones.

Brand associations are defined as "anything linked to the memory of a brand" (Aaker, 1991). These associations may be caused by various sources and differ in strength and uniqueness (Keller, 1993). Despite the wide range of sources, Aaker (1996) identifies the main categories of product, personality and organization related brand associations. Growing experience and/or exposure will strengthen these

associations (Aaker, 1991). Finally, positive associations signal high quality and commitment leading to more favorable buying decisions for the brand (Yoo et al., 2000).

Loyalty is defined by Aaker (1991) as “the attachment that a customer has to a brand.” This brand attachment can be conceptualized from a behavioral or an attitudinal perspective. Whereas behavioral loyalty focuses on repurchase behavior, attitudinal loyalty reflects the intention or “tendency to be loyal to a focal brand” (Yoo & Donthu, 2001). In the end, consumers with a high level of loyalty increase brand equity by purchasing a brand routinely and resisting other brand offers (Yoo et al., 2000).

2.2 Critical incidents (CI)

Bitner et al. (1990) describe an incident which contributes significantly either positively or negatively to an activity or phenomenon as critical. Focusing on negative incidents as defined by Roos (2002; see introduction), a negatively changed buying behavior can be triggered by these incidents (e.g. Gustafsson et al., 2005; Bitner et al., 1990). This would mean that companies lose operating efficiencies and future revenue streams as a result of customers who reduce their spending and purchase frequency, purchase at discount instead of full prices or switch to another supplier.

Different causes may trigger these consequences. According to Keaveney (1995), CI result from either pricing problems, lack of convenience, core service (product) failures, service encounter failures, inadequate response to failures, attraction by competitors or ethical problems. Concentrating on service failures, Keaveney (1995) distinguishes only two ethical problems occurring while interacting with the customer: dishonest or intimidating behavior and conflicts of interest related to commission-based recommendations.

However, public awareness has changed with regard to what is deemed to be an ethical problem. Furthermore, due to better educated, increasingly skeptical and demanding consumers (Mangold & Faulds, 2009) and their ability to publish negative incidents easily via the internet, customers do not experience most CI personally nowadays. Instead, people perceive especially ethical problems in the media as negative publicity. As a consequence, Shleifer (2004) takes a more general perspective on ethical problems and differentiates, additionally to Keaveney (1995), between employment of children, excessive executive payments, corporate earnings manipulation, involvement of universities in commercial activities and corruption.

In order to compare the results of this study with existing analyses, attitudinal changes concerning a product failure are quantified. Also, due to the increased importance of ethical problems and to compare distinct CI, this study examines changes in the customer-brand relation becoming aware of corruption.

3 Development of hypotheses

3.1 Relations between brand equity and its dimensions (model hypotheses)

According to Aaker (1996), loyalty is a key indicator of brand equity and can be strengthened by perceived quality and brand associations. Myers (2003) refines this statement, arguing that brand loyalty is a dependent variable of perceived quality and the components of brand associations. Additionally, Buil, de Chernatony and Martinez (2008) claim perceived value, brand personality and organizational associations reflect the relevant brand associations and complete the structural model. Hence, the following hypotheses are proposed:

Hypothesis 1: Rising attitudinal loyalty (LOY) enhances brand equity (EQU).

Hypothesis 2: Higher perceived quality (PQU) increases loyalty (LOY).

Hypothesis 3a: The greater the perceived value (PVA), the greater the loyalty.

Hypothesis 3b: The greater the brand personality (BPE), the greater the loyalty (LOY).

Hypothesis 3c: The greater the organizational associations (ORG), the greater the loyalty (LOY).

Integrating the concept of perceived value takes into account that a high quality perception is necessary, but not sufficient, to become a loyal customer due to perceived price-performance ratio. Therefore, perceived value is assumed to mediate the effect towards loyalty. As a result of Germany-wide similar prices for the same brands, the following hypotheses are proposed:

Hypothesis 4a: Perceived value (PVA) mediates the influence of perceived quality (PQU) on loyalty (LOY).

Hypothesis 4b: The greater the perceived quality (PQU), the greater the perceived value (PVA).

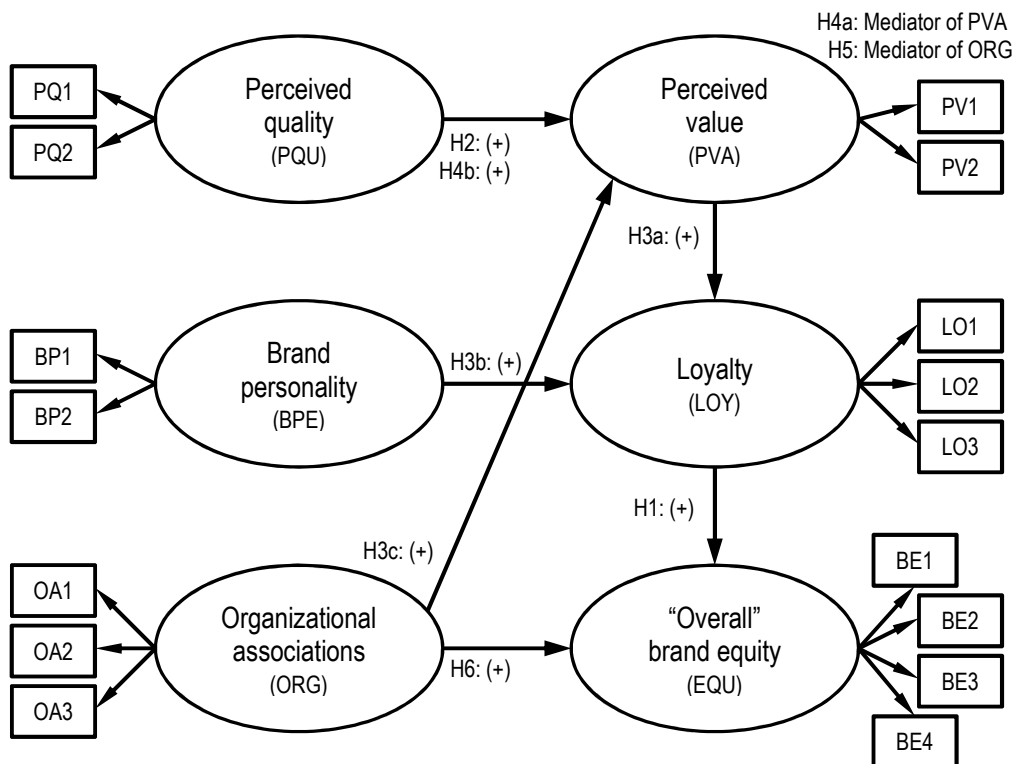
Given that perceived value has to be positive to increase loyalty, organizational associations, such as credibility, esteem and trust, will affect loyalty only in addition to perceived value. Consequently, considering the interdependencies of these organizational associations and following Sirdesmukh, Singh and Sabol (2002), perceived value is assumed to be a mediator between organizational associations and loyalty. In addition, an effect of organizational associations might exist detached from product or service characteristics. Therefore, the following hypotheses are proposed:

Hypothesis 5: Perceived value (PVA) mediates the influence of organizational associations (ORG) on loyalty (LOY).

Hypothesis 6: The greater the organizational associations (ORG), the greater the overall brand equity (EQU).

Derived from these insights and the corresponding hypotheses, the structural model is specified taking into account the mediation of perceived value (see Figure 2).

Figure 2: Structural model and model hypotheses



3.2 Effects of critical incidents (processing or reaction hypotheses)

Keller (1993) postulates that negative associations are formed on the basis of new negative information (knowledge). Consequently, a reduction of positive attitudes towards the brand is expected when a critical incident occurs. Several studies confirm this negative impact (e.g. Ahluwalia et al., 2000; van Heerde, Helsen & Dekimpe, 2007). Therefore, the following hypothesis is proposed:

Hypothesis 7: A negative critical incident (CI) reduces positive attitudes.

However, closer examination reveals indications that perceptions, and hence the impact of critical incidents, vary depending on customer-brand relation, crisis and the medium which transmits the message.

With regard to customer-brand relation, various studies show a moderating effect of pre-crisis levels using the concepts familiarity (Ahluwalia, 2002; Cleeren et al., 2008; Dawar & Lei, 2009), commitment (Ahluwalia et al., 2000; Ingram et al., 2005) and brand equity (Dawar & Pillutla, 2000; Cleeren et al., 2008). Specifically, this means critical incidents have less influence on familiar customers, customers who are highly committed to a brand as well as customers with substantial CBBE. These buffering effects can be caused, on the one hand, by more likely biased processing of loyal customers (Ahluwalia et al., 2000) and their tendencies to resist or discount disconfirmatory information (Dawar & Pillutla, 2000). On the other hand, potential customers miss the opportunity to increase their personal experience, which is instrumental in maintaining brand equity during a crisis (Aaker & Biel, 1993). Consequently, they are more affected (van Heerde et al., 2007). Therefore, the following hypotheses are derived considering the importance of loyalty to brand equity (Aaker, 1996):

Hypothesis 8: Higher brand equity leads to smaller effects of the critical incident.

Hypothesis 9: The smaller the effect of the critical incident, the greater the loyalty.

Furthermore, supposing that loyal customers possess generally more brand knowledge as well as stronger associations (Romaniuk, 2008) and are hence more familiar and committed compared to potential customers, the following hypotheses result:

Hypothesis 10: Associations are stronger for customers compared to non-customers.

Hypothesis 11: Current customers reduce their attitudes less compared to non-customers.

According to Dawar and Lei (2009), the influence of the nature of crisis depends on whether key benefit associations are affected. This implies different critical incidents influence different brand dimensions. One reason is that risk perceptions differ depending on the nature of crisis (Weißgerber, 2007). Therefore, in the case of a product failure, perceived quality (PQU) is presumed to be directly affected in consequence of perceived functional and/or physical risks. In contrast, in the case of corruption, a significant direct effect is expected on associations towards the company (ORG), such as trust, credibility and esteem due to psychological and/or social risks (personal identification). With regard to both critical incidents, perceived value is assumed to decrease as a result of its mediating role and the expected direct effects. Consequently, the following hypotheses are proposed:

Hypothesis 12a: In the event of corruption, organizational associations (ORG) are significantly affected.

Hypothesis 12b: Perceived quality (PQU) is significantly affected in the event of a product failure.

Hypothesis 12c: In both cases, perceived value (PVA) is significantly affected.

In addition to the nature of crisis, Laufer, Gillespie, McBride and Gonzalez (2005) show that perceived severity mediates the impact of critical incidents. Dawar and Lei (2009) confirm this mediation on negative perceptions measuring seriousness. Assuming that the perception of seriousness depends on the potential amount of damage, geographic and chronological proximity as well as whether or not the persons are directly affected, the following hypotheses are proposed:

Hypothesis 13: When the persons are not directly affected, the critical incident impacts loyalty (LOY) less than other constructs.

Hypothesis 14: CI which are perceived as less critical affect brand dimensions less.

Finally, considering that people strive to avoid cognitive dissonance, mediums transmitting bad news are key planks. This means the more credible the medium is perceived to be, the more likely and extensive the processing of information. Consequently, the final hypothesis is offered:

Hypothesis 15: Less credible perceived news items affect brand dimensions less.

4 Methodology

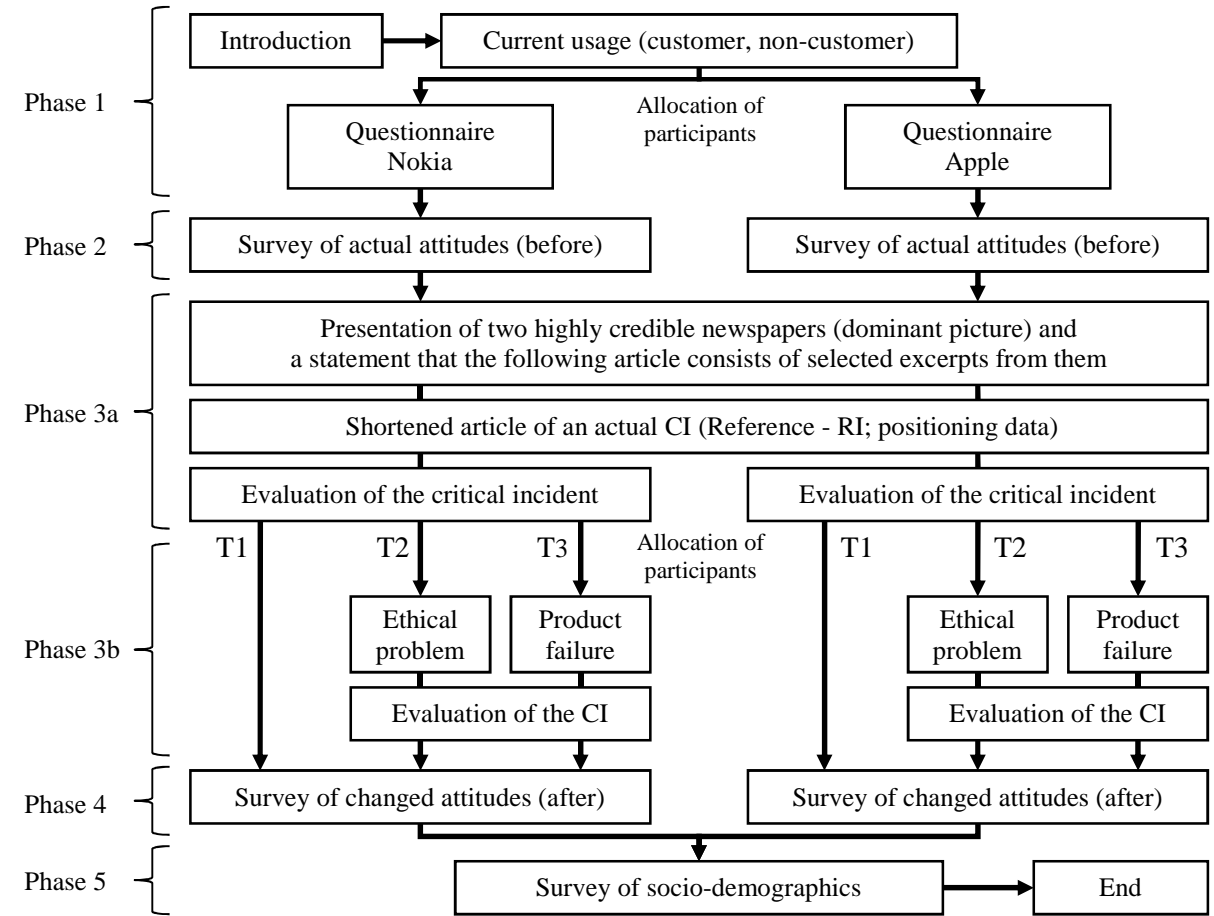
4.1 Study design

In order to test these specified hypotheses, attitudinal data are gathered via the internet using an experimental pretest-posttest-control design. The experimental design considers additionally three independent variables – level of brand equity (low vs. high, respectively Nokia vs. Apple), current relationship (customer vs. non-customer) and the nature of the critical incident (product failure vs. ethical problem). Consequently, the design consists of 8 treatment and 4 control groups (2x2x3). All test subjects are assigned randomly to a treatment or control group except current customers of the brands under investigation. Nokia and Apple customers are allocated randomly to a treatment or control group in their respective survey to reach or rather to exceed a minimum threshold of responses in every group. This means, all responses regarding Nokia do not contain the responses of customers who currently use an Apple mobile phone and vice versa (see Figure 3).

The treatments are fictitious articles claiming a product failure or corruption happened recently in and limited to East Asia. Consequently, the incidents do not

concern participants personally. Focusing on attitudinal changes triggered by the incident, these articles exclude any kind of company response. In order to maximize credibility, the articles are created on the basis of past CI in the mobile phone industry (malfunction of batteries and corruption). Also, all participants are exposed first to a well-known critical incident in the industry. For this purpose, this study takes advantage of the data protection discussion regarding smartphones which collect and save positioning data without the knowledge of its user. To offer or rather recall this information concerning both brands, two existing articles of highly credible German-language newspapers are combined. In addition, respondents are informed about the source and are exposed to a picture of cited newspapers speculating that memories of this picture increase the credibility of the fictional treatments.

Figure 3: Experimental design



Examining the success of manipulation and the influence of these mediators, subsequent to every article presentation respondents evaluate their knowledge, perceived credibility and criticality of the critical incident. The article presentation (one per control group and two per treatment group) follows a second measurement of all brand equity dimensions. Consequently, pretest results reflect actual attitudes to a specific smartphone brand based on past perceptions and/or direct experiences, whereas, the second measurement covers the reaction to critical incidents. Finally, socio-demographics are collected.

4.2 Measures

According to Christodoulides and de Chernatony's (2010) distinction between indirect and direct approaches to measure CBBE, this study applies both to measure attitudinal changes with regard to occurring critical incidents. Both indirect approaches and direct approaches are measured using a seven-point Likert scale (strongly disagree to strongly agree). Additionally, avoiding a forced choice, each item offers an alternative no-answer-option. All multi-item measurement scales are adopted from existing measures. In order to ensure that German translations are appropriate, first, a group composed of 20 students translated the original measures. Second, another group translated the most frequent translations of each item back into English. Finally, the translation which corresponds more closely to the original measures is chosen for each item.

The used perceived quality scale (PQU) is adopted from Yoo and Donthu (2001) and consists of two items. The scale reflects the dimensions of perceived functionality, which is usually a key benefit of technical devices, and perceived quality of the corresponding smartphone brand.

With regard to brand personality scale (BPE), this study follows Buil et al. (2008) and applies the scale proposed by Aaker (1996). However, the final scale contains only two of initially three items. The third item, which refers to a clear image of a typical brand user, is eliminated due to a different semantic content and hence factor loadings below 0.15 across all groups in the pre-test (Fornell & Larcker, 1981).

In order to measure the organizational associations (ORG), this study uses, in compliance with Buil et al. (2008), the three-item scale of Aaker (1996) including statements about trust, credibility and esteem.

Table 1: Measures of the constructs used to evaluate attitudinal changes

	Items	
PQU	PQ1	The likelihood that X would be functional is very high
	PQ2	The likely quality of X is extremely high
BPE	BP1	Brand X has a personality
	BP2	Brand X is interesting
ORG	OA1	I trust the company which makes brand X
	OA2	I like the company which makes brand X
	OA3	The company which makes brand X has credibility
PVA	PV1	Brand X is good value for money
	PV2	Within Y (category) I consider brand X a good buy
LOY	LO1	I would not buy other brands of Y (category) if brand X is available at the store
	LO2	Brand X would be my first choice when considering Y (category)
	LO3	I consider myself to be loyal to brand X
EQU	BE1	It makes sense to buy X instead of any other brand, even if they are the same
	BE2	If there is another brand as good as X, I prefer to buy X
	BE3	Even if another brand has the same features as X, I would prefer to buy X
	BE4	If another brand is not different from X in any way, it seems smarter to purchase X

Concerning the applied perceived value scale (PVA), the effect analysis considers two out of three items developed by Lassar, Mittal and Sharma (1995). The third item is excluded in the course of reliability and validity analyses due to strong correlations with loyalty items. The remaining two-item scale reflects perceived value for money.

Both the applied loyalty scale and the used direct measurement of CBBE, the overall brand equity scale, are adopted from Yoo et al. (2000). The three-item loyalty scale includes statements about attitudinal loyalty. In contrast, the overall brand equity scale consists of 4 items regarding brand preferences. Table 1 gives an overview of all applied measures which are restricted to load only onto one prespecified construct.

4.3 Model evaluation and hypotheses tests

Before evaluating the conceptual model, first, this study examines the assumption of differences both in actual attitudes towards distinct brands and between loyal and potential customers. Second, an analysis verifies the hypotheses that Nokia and Apple have respectively low or high brand equity. For these purposes, descriptive statistics are compared and an ANOVA examines for each item whether associations depend on group membership. Additionally, ANOVA includes multiple comparisons with Bonferroni correction to test for significance of differences between individual groups to assess hypothesis 10.

Following Hu and Bentler (1998), this study applies structure equation modeling (SEM) to evaluate the fit of the proposed model. More precisely, this study uses LISREL with mean structures in order to consider item means and invariance across samples or time according to Baumgartner and Steenkamp (2006). In other words, this means configural, metric, strong factorial and strict factorial invariance are sequentially analyzed using multi-sample-analyses based on covariances and means. The estimated parameters (Maximum Likelihood Estimation) show the effect of variables in an absolute sense and are used to compare similar models in other populations (Bagozzi, 1977). If the proposed model is adequate, the respective exogenous and endogenous measurement models are evaluated separately. Due to

Sörbom's (1974) extension of the classical model of factorial invariance, these separate models are necessary to identify differences in both exogenous and endogenous latent variables. Consequently, the fit and invariance of these measurement models are also examined across groups.

The evaluation starts examining reliability and validity of the measurement model. During the further course, the significance, sign and level of each estimated path coefficient are considered and interpreted with regards to hypotheses 1 to 6.

Model evaluation follows an analysis of potential mediators such as knowledge, credibility and criticality. Between-subject-effects are examined using ANOVA and multiple comparisons with Bonferroni correction. Within-subject-effects of paired samples are analyzed to identify differences in perceptions of distinct incidents (reference incident (RI) to corruption (T2) or product failure (T3)).

Immediate attitudinal changes triggered by various CI and invariance over time (pre-posttest) are examined using LISREL with mean structures. To evaluate the reactions, differences in latent factor means (κ) are simultaneously estimated within groups (pre-posttest). To obtain these group-specific differences, exogenous and endogenous factor models are estimated separately. Furthermore, the latent variable mean (κ) of the pretest, including all respondents within one group, is used as reference point and consequently set (fixed) to be zero. In contrast, κ is set to be free regarding all treatment groups. Additionally, the factor loadings (λ), intercept terms (τ) and measurement errors (δ) are declared to be invariant between pre- and posttest measurement. As a result, latent variables are uniformly scaled within one simultaneously estimated group regardless of treatments. Consequently, absolute differences in latent factor means caused by various CI are directly comparable.

5 Sample

5.1 Data collection and profile of respondents

The data are collected online using a snowball-sampling. For this purpose, an internet link was spread via student mailing lists asking them to forward it via Facebook to friends. A total of 1,122 usable completed responses were gathered. 657 out of these 1,122 respondents (58.6%) used a smartphone at the date of the survey. Remaining treatments unconsidered, in comparison to 252 responses of current customers and 256 of non-customers regarding the Nokia survey, 227 current customer and 387 non-customer responses are collected regarding the Apple survey.

The demographic results are similar in all four groups with regard to gender ($\chi^2(3) = 4.38; .224$) and age ($\chi^2(18) = 28.36; .057$) using Pearson chi-square tests and comparisons of column proportions with adjusted p-values (Bonferroni method, $p < .05$). In general, the sample is balanced with a proportion of 49.4% female to 50.6% male respondents. However, the age cohort of 21- to 30-year old respondents is over-represented with 78.5 percent. Due to the addressing of students first, the sample includes an above-average share of 74.2% being students. Therefore, the lowest income group is over-represented with 63.7% including people who have no more than 1,000€ net income per month. Regarding monthly net income, chi-square test results reveal differences across groups ($\chi^2(9) = 33.94; .000$), but comparisons of column proportions show that only the Apple-customer group differs significantly from the remaining three comparable groups (see Table 2).

This means while the proportion of low paid persons earning monthly a maximum of 1,000€ is significant smaller in the Apple customers group, persons with a net income between 1,001€ and 2,000€ are over-represented in comparison to other groups. These higher incomes reflect the significant higher proportion of employed

persons in the Apple-customer group. Consequently, compared to the groups of potential customers of Apple or Nokia and loyal customers of Nokia, students are under-represented in the Apple customer group. As a result, the chi-square test leads to a rejection of hypothesized similar proportions regarding occupation in the groups ($\chi^2(18) = 37.34; .005$).

Table 2: Crosstab and comparisons of column proportions (net income and group)

Net income (per month)		Nokia		Apple		Total
		NC*	CU**	NC*	CU**	
0 - 1,000€	Count	173 _a	171 _a	261 _a	110 _b	715
	% within net income	24.2%	23.9%	36.5%	15.4%	100.0%
1,001 - 2,000€	Count	45 _a	44 _a	57 _a	62 _b	208
	% within net income	21.6%	21.2%	27.4%	29.8%	100.0%
2,001 - 3,000€	Count	9 _a	16 _a	24 _a	13 _a	62
	% within net income	14.5%	25.8%	38.7%	21.0%	100.0%
>3,000€	Count	3 _a	4 _a	9 _a	11 _a	27
	% within net income	11.1%	14.8%	33.3%	40.7%	100.0%
Total	Count	230	235	351	196	1012 ^{***}
	% within net income	22.7%	23.2%	34.7%	19.4%	100.0%

* Non-customer ** Customer *** Difference to 1,022 responses are missing values ^{a,b} Each subscript letter denotes a subset of group categories whose column proportions do not differ significantly from each other at the .05 level (adjusted p-values, Bonferroni method).

5.2 Missing values

The fact that a forced choice should be avoided results in some missing values. The analysis of missing values regarding measurement models reveals that in only 880 out of 1,122 cases are the data complete. The remaining 242 cases have in total 1,072 missing values across all 32 variables (2 x 16 variables, PRE - POST). Overall, 2.98 percent of data are missing. However, Little's (1988) test indicates on a five percent significance level that data are missing completely at random (MCAR) for both the overall sample ($\chi^2(4643) = 4696.75; .287$) and the subsamples of Nokia-NC ($\chi^2(2318) = 2377.65; .190$), Nokia-CU ($\chi^2(2026) = 2109.17; .097$), Apple-NC ($\chi^2(580) = 554.77; .768$) and Apple-CU ($\chi^2(443) = 476.29; .133$). In other words, lack of data depends neither on observed nor on missing values (Rubin, 1976). Based on these

results and to keep the sample size, missing values of the measurement model are imputed using expectation-maximization (EM) algorithm. The imputation procedure is executed separately for the subsamples to avoid a loss of group specific characteristics.

6 Results

6.1 Brand associations (item level)

Table 3 shows descriptive statistics of the first measurement (actual attitudes) for both the whole sample and the subsamples. Furthermore, this table reports for each indicator the results of ANOVA with multiple comparisons. To assess the outcomes of ANOVA, the significance level is adjusted to $p < 0.01$ due to shown deviations from a normal distribution and part absence of homogeneity of variances. Although ANOVA is considered to be robust against such violations, in terms of multiple testing an additional non-parametric test is performed. This Kruskal-Wallis test and ANOVA indicate a significant main effect for group segmentation with regard to each item.

With regard to the assumed perceptual differences of both brands, the results are not consistent. Differences in all associations are significant comparing loyal customers of Nokia and Apple. But comparisons of potential customers suggest that associations differ significantly only regarding perceived quality (PQU), brand personality (BPE) as well as individual indicators of PV2 and LO2. However, focusing on more relevant associations of customers and the key benefit dimension of technical devices (functional quality), the conclusion can still be drawn that both brands differ considerably. Furthermore, Apple's higher level of these associations is a first indication of high brand equity. The combination of this indication with the results of direct measures and key associations (loyalty) of brand equity implies that Nokia and Apple represent respectively a weak and a strong smartphone brand.

Hence, due to comparable perceptions, organizational associations are less relevant to create brand equity.

In principle, associations differ significantly between loyal and potential customers for both brands. Furthermore, as hypothesized, associations of loyal customers are more positive. Consequently, hypothesis 10 is supported.

Table 3: Descriptive statistics of actual attitudes (first measurement) and test of between-subject effects

PRE means (s.d.)	Overall n=1122		Nokia NC** n=256 CU*** n=252		Apple NC** n=387 CU*** n=227		ANOVA**** η^2			Kruskal-Wallis-Test
	Skewness / Kurtosis*						Model	Intercept	Segment	
PQ1 (1.59)	5.00 - .61 / - .33		4.23 (1.40)	4.70_a (1.64)	4.98_a (1.54)	6.27 (0.94)	.19	.92	.19	.000
PQ2 (1.59)	5.00 - .62 / - .32		4.20 (1.39)	4.76_b (1.54)	5.00_b (1.63)	6.18 (1.01)	.17	.92	.17	.000
BP1 (2.02)	4.05 - .11 / -1.25		2.92 (1.61)	3.50 (1.81)	4.28 (2.02)	5.52 (1.61)	.20	.83	.20	.000
BP2 (1.90)	4.32 - .26 / -1.04		3.13 (1.61)	3.76 (1.76)	4.55 (1.77)	5.88 (1.33)	.25	.87	.25	.000
OA2 (1.86)	3.66 - .03 / -1.12		3.22_c (1.72)	3.96 (1.80)	3.17_c (1.75)	4.65 (1.80)	.10	.81	.10	.000
OA3 (1.83)	3.84 - .06 / - .96		3.22_d (1.62)	3.94 (1.73)	3.43_d (1.73)	5.10 (1.67)	.14	.84	.14	.000
OA4 (1.65)	3.96 - .25 / - .69		3.61_e (1.61)	4.10 (1.64)	3.63_e (1.59)	4.78 (1.51)	.08	.86	.08	.000
PV1 (1.57)	4.00 - .13 / - .51		3.65_f (1.19)	4.14 (1.44)	3.40_f (1.58)	5.26 (1.31)	.19	.89	.19	.000
PV2 (1.76)	4.37 - .26 / - .82		3.37 (1.38)	4.07_g (1.62)	4.16_g (1.68)	6.19 (0.98)	.30	.90	.30	.000
LO1 (2.08)	2.63 1.04 / - .32		1.54_h (1.00)	2.46 (1.71)	1.94_h (1.59)	5.20 (2.01)	.41	.74	.41	.000
LO2 (2.20)	2.97 .73 / - .94		1.60 (0.99)	2.89 (1.80)	2.20 (1.70)	5.94 (1.51)	.50	.80	.50	.000
LO3 (2.11)	2.71 .90 / - .65		1.59_i (1.13)	3.34 (2.03)	1.76_i (1.46)	4.87 (2.10)	.37	.74	.37	.000
BE1 (1.83)	2.84 .62 / - .74		2.29_j (1.42)	2.99 (1.70)	2.29_j (1.59)	4.24 (1.98)	.17	.75	.17	.000
BE2 (2.05)	3.11 .52 / -1.06		2.26_k (1.40)	3.35 (1.87)	2.32_k (1.70)	5.15 (1.91)	.30	.78	.30	.000
BE3 (2.03)	3.05 .57 / - .98		2.22_l (1.41)	3.30 (1.84)	2.29_l (1.68)	4.99 (2.01)	.27	.77	.27	.000
BE4 (1.95)	2.88 .65 / - .85		2.26_m (1.49)	3.08 (1.85)	2.32_m (1.70)	4.34 (2.13)	.17	.73	.17	.000

* Standard Errors: .073 (Skewness), .146 (Kurtosis) ** Non-Customer *** Customer **** All corrected models, intercepts and fixed factors (group) are significant on $p < .01$; Levene-Tests are only not significant for all OA items (.05)

^{a,b} Each subscript letter denotes a subset of groups whose (observed) mean differences are not significant on $p < .01$ using Multiple Comparisons (Post-Hoc-Test, Bonferroni)

6.2 Assessing reliability and validity

Table 4 and 5 report results of confirmatory factor analysis including indicator reliability, composite reliability, average variance extracted (AVE) and correlations between latent variables for each group. According to Bagozzi and Baumgartner (1994) calling for values exceeding .40, all indicators except one are reliable. The only exception concerns a loyalty item (LO3) in the potential customers group of Nokia (Nokia-NC) with an indicator reliability of .37. In order to apply one uniform measurement model across groups, a single item falling slightly below the threshold value is acceptable. Consequently, this item is not eliminated and indicator reliability is considered to be given.

Table 4: Indicator reliability (First measurement - PRE)

	Exogenous measurement model				Endogenous measurement model				
	Nokia		Apple		Nokia		Apple		
	NC*	CU**	NC*	CU**	NC*	CU**	NC*	CU**	
PQU	.69	.69	.74	.61	PVA	.77	.71	.58	.58
	.72	.72	.76	.66		.62	.92	.74	.72
BPE	.52	.69	.48	.53	LOY	.56	.74	.79	.81
	.90	.88	.83	.81		.71	.77	.83	.83
ORG	.83	.79	.77	.81	EQU	.69	.74	.77	.53
		.85		.85		.76	.74	.94	.92
	.69	.72	.74	.77		.96	.92	.96	.96
							.85	.79	.72

* Non-customer ** Customer

Evaluating internal consistency, this study uses Cronbach's alpha, composite reliability as well as the AVE. Cronbach's alpha exceeds the minimum level of acceptability of .70 (Nunnally, 1978) for all groups and constructs. Furthermore, composite reliability and AVE fully meet the limits of respectively > .60 (Bagozzi & Yi, 1988) and > .50 (Fornell & Larcker, 1981). Finally, following Anderson and Gerbing (1988), significance of all t-tests imply indicators which measure effectively the same constructs.

Assessing construct validity, first, following Fornell and Larcker (1981), the results of construct reliability imply convergence validity. Second, discriminant validity is given using the Fornell and Larcker (1981) test. AVE of all constructs exceeds the squared correlation between the considered and all other constructs. Third, according to Hildebrandt (1984), overall model fit is indicative of nomological validity (see next section). Fourth, after eliminating one brand personality and one perceived value indicator (see Measures), content validity is considered to be given due to positive judgments and reapplications of scales by experts (Cronbach & Meehl, 1955).

Table 5: Correlations of latent variables & reliability measures (First measurement - PRE)

		NC*						CU**						
		PQU	BPE	ORG	PVA	LOY	EQU	PQU	BPE	ORG	PVA	LOY	EQU	
Nokia	PQU	1.00						1.00						
	BPE	.48	1.00					.55	1.00					
	ORG	.64	.71	1.00				.60	.80	1.00				
	PVA	.81	.57	.72	1.00			.83	.57	.60	1.00			
	LOY	.26	.47	.39	.48	1.00		.73	.57	.55	.72	1.00		
	EQU	.43	.61	.65	.52	.63	1.00	.68	.60	.69	.67	.74	1.00	
	Cronb. α	.83	.81	.92	.81	.76	.91	.83	.88	.92	.89	.85	.96	
Rel (ξ_j)	.83	.83	.92	.82	.78	.96	.83	.88	.92	.90	.86	.96		
AVE	.71	.71	.79	.70	.55	.86	.71	.79	.79	.81	.67	.84		
Apple	PQU	1.00						1.00						
	BPE	.65	1.00					.42	1.00					
	ORG	.66	.76	1.00				.53	.66	1.00				
	PVA	.81	.69	.80	1.00			.75	.54	.68	1.00			
	LOY	.45	.50	.59	.69	1.00		.50	.56	.57	.75	1.00		
	EQU	.43	.47	.65	.68	.82	1.00	.42	.62	.67	.59	.74	1.00	
	Cronb. α	.85	.76	.91	.78	.88	.96	.77	.78	.91	.76	.88	.91	
Rel (ξ_j)	.86	.79	.90	.79	.89	.96	.77	.80	.91	.79	.89	.92		
AVE	.75	.65	.76	.66	.72	.85	.63	.67	.77	.65	.73	.74		

* Non-customer ** Customer

6.3 Structural model evaluation (fit indices)

Estimated path coefficients shown in Table 6 indicate a plausible and stable structural model across groups. This means, relations between all constructs are positive. However, path coefficients between ORG and PVA for Nokia-CU and

between BPE and LOY for Apple-NC are not significant. But the structural model is not changed in order to examine comparable models across groups. Consequently, hypotheses 1, 2, 3a, 4a and 4b as well as 6 are supported across groups. Hypothesis 3b is supported except for the group of Apple-NC. Hypothesis 3c and hence hypothesis 5 are also only supported for 3 out of 4 groups (all except Nokia-CU).

Table 6: Estimated standardized path coefficients of structural models (PRE)

Coefficients (t-value)	Nokia-NC*	Nokia-CU**	Apple-NC*	Apple-CU**
PQU - PVA	.57 (7.20)	.82 (9.72)	.45 (7.37)	.56 (6.22)
BPE - LOY	.40 (4.50)	.28 (4.57)	.06 (0.82)	.25 (3.49)
ORG - PVA	.36 (5.02)	.05 (0.75)	.52 (8.55)	.38 (4.99)
ORG - EQU	.47 (8.25)	.40 (7.20)	.27 (6.44)	.39 (6.05)
PVA - LOY	.19 (2.25)	.60 (9.07)	.62 (7.74)	.59 (7.31)
LOY - EQU	.45 (6.97)	.53 (8.78)	.67 (14.12)	.51 (7.55)

* Non-customer ** Customer

Table 7: Fit indices of the full model (overall model fit – PRE)

PRE	X ²	d.f.	p-Value	X ² /df	RMSEA	LO90	HI90	PCLOSE	NFI	NNFI	CFI	GFI	SRMR	
Multi-Group-Analysis	1016.83	380	.000	2.68	.077	.072	.083	.00	.97	.98	.98			
Nokia	NC*	246.08	95	.000	2.59	.079	.067	.092	.00	.97	.97	.98	.89	.054
	CU**	264.91	95	.000	2.79	.084	.072	.097	.00	.97	.98	.98	.88	.050
Apple	NC*	242.59	95	.000	2.55	.063	.054	.073	.01	.98	.99	.99	.93	.043
	CU**	263.25	95	.000	2.77	.089	.076	.100	.00	.96	.97	.97	.87	.055

* Non-Customer ** Customer

Evaluating overall model fit, the fit indices shown in Table 7 suggest an acceptable fit for both multi-sample analysis and all analyses for separate groups applying the combination rules of Hu and Bentler (1999). This means, despite severe criticism against global cut-off values (see e.g. Barrett, 2007; Chen, Curran, Bollen, Kirby & Paxton, 2008) this study uses .95 for NNFI and .08 for SRMR (Hu & Bentler, 1999) as well as .95 for CFI (Carlson & Mulaik, 1993). Additional frequently-used fit indices are reported. Also NFI (> .90; Arbuckle, 2008), RMSEA (< .10; MacCallum,

Browne & Sugawara, 1996) and chi-square-value divided by degrees of freedom ($\chi^2/d.f. < 3$; Homburg & Giering, 1996) indicate an acceptable fit.

Tables 8 and 9 show the fit indices for the separate and multi-sample analyses of the respective exogenous and endogenous factor models. Based on the above used combination rules (Hu and &, 1999), fit criteria indicate an acceptable fit for the submodels.

Table 8: Fit indices of the exogenous measurement model (overall model fit – PRE)

CFX*		X ²	d.f.	p-Value	X ² /df	RMSEA	LO90	HI90	PCLOSE	NFI	NNFI	CFI	GFI	SRMR
Multi-Group-Analysis		116.61	44	.000	2.65	.077	.060	.094	.01	.98	.98	.99		
Nokia	NC**	21.79	11	.026	1.98	.062	.021	.100	.27	.99	.99	.99	.98	.019
	CU***	24.82	11	.010	2.26	.071	.033	.110	.16	.99	.99	.99	.97	.020
Apple	NC**	40.45	11	.000	3.68	.083	.057	.110	.02	.98	.98	.99	.97	.021
	CU***	29.55	11	.002	2.69	.086	.049	.120	.05	.98	.97	.98	.96	.034

* Containing perceived quality, brand personality and organizational associations ** Non-Customer *** Customer

Table 9: Fit indices of the endogenous measurement model (overall model fit – PRE)

CFY*		X ²	d.f.	p-Value	X ² /df	RMSEA	LO90	HI90	PCLOSE	NFI	NNFI	CFI	GFI	SRMR
Multi-Group-Analysis		313.13	96	.000	3.26	.090	.079	.100	.00	.98	.98	.99		
Nokia	NC**	83.46	24	.000	3.48	.099	.076	.120	.00	.97	.97	.98	.93	0.056
	CU***	73.32	24	.000	3.06	.090	.067	.110	.00	.98	.98	.99	.94	0.037
Apple	NC**	71.21	24	.000	2.97	.071	.053	.091	.03	.99	.99	.99	.96	0.021
	CU***	85.14	24	.000	3.55	.106	.082	.130	.00	.97	.97	.98	.92	0.040

* Containing perceived value, loyalty and overall brand equity ** Non-Customer *** Customer

After supporting the equality of factor and model structure across groups with multi-sample analyses using same pattern and starting values, Tables 10, 11 and 12 contain results of the additionally required invariance tests. Following Little, Card, Slegers and Ledford (2007), the respective invariance across groups is rejected if the descriptive fit index of NNFI changes more than .01 compared to the prior and weaker invariance level. Based on this criteria, the results suggest an absence of

factorial invariance with regard to exogenous and endogenous measurement models. This means, without factorial invariance, changes in latent variable means can only be estimated within groups. As a consequence, immediate reactions triggered by various critical incidents are not directly comparable in an absolute sense across groups.

Table 10: Invariance analyses across groups - overall model (PRE)

Overall model fit - PRE	χ^2	d.f.	p-Value	χ^2/df	RMSEA	LO90	HI90	PCLOSE	NFI	NNFI	CFI
Metric invariance	1333.92	410	.000	3.25	.090	.084	.095	.00	.97	.97	.98
Strong factorial invariance	1712.18	449	.000	3.81	.100	.095	.110	.00	.95	.96	.96

Table 11: Invariance analyses across groups - exogenous model (PRE)

Exogenous - PRE	χ^2	d.f.	p-Value	χ^2/df	RMSEA	LO90	HI90	PCLOSE	NFI	NNFI	CFI
Metric invariance	133.83	56	.000	2.39	.071	.055	.086	.02	.98	.98	.99
Strong factorial invariance	265.48	68	.000	3.90	.102	.089	.120	.00	.96	.96	.97

Table 12: Invariance analyses across groups - endogenous model (PRE)

endogenous - PRE	χ^2	d.f.	p-Value	χ^2/df	RMSEA	LO90	HI90	PCLOSE	NFI	NNFI	CFI
Metric invariance	590.17	114	.000	5.18	.122	.110	.130	.00	.96	.96	.97

6.4 Investigation of potential mediators

Differences between knowledge of the reference incident (RI) imply that this incident is widely known with regard to Apple and has been lost in media with regard to Nokia. In contrast to approximately 78% (86%) questioned about Apple, just about 19% (23%) of potential customers (loyal customers) questioned about Nokia know this critical incident. Hence, the Pearson chi-square test indicates that knowledge differs significantly between the groups ($\chi^2(3) = 407.81; .000$).

Reflected by a chi-square test ($\chi^2(3) = 5010; .171$), the hypothetical case of corruption (T2) is similarly unknown across groups (Nokia-NC - 97%, CU - 99%,

Apple-NC - 93% and CU - 96%). Due to better known hypothetical product failure (T3) regarding Apple, variations are unexpectedly significant ($\chi^2(3) = 23.71; .000$). Although this critical incident is based on an event which happened to Nokia several years ago, 29% (32%) of Apple respondents claim to know the incident in contrast to 9% (14%) of potential (loyal) customers of Nokia.

Table 13: Descriptive statistics for evaluations of the actual incident and test of between-subject (group) effects

RI means (s.d.)	Overall n=1122		Nokia n=256		Apple n=387		ANOVA ****			Kruskal-Wallis-Test
	Skewness / Kurtosis *	NC **	CU ***	NC **	CU ***	η^2	Model	Intercept	Segment	
Credibility (1.53)	5.07 -.47 / -.47	5.08 _a (1.48)	5.00 _a (1.47)	5.06 _a (1.63)	5.16 _a (1.48)	x	x	x	.563	
Criticality (1.54)	5.48 -.93 / .18	5.82 _b (1.37)	5.64 _b (1.41)	5.72 _b (1.41)	4.53 (1.69)	.10	.93	.10	.000	

* Standard Errors: .073 (Skewness), .146 (Kurtosis) ** Non-Customer *** Customer **** All shown corrected models, intercepts and fixed factors (groups) are significant on $p < .01$; Levene-Test is only not significant for credibility ($p < .05$)

^{a,b} Each subscript letter denotes a subset of groups whose (observed) mean differences are not significant on $p < .01$ using Multiple Comparisons (Post-Hoc-Test, Bonferroni)

Against this background, varying credibility is expected between brands for the reference incident and the product failure. However, analyses of potential mediators do not indicate significant variations between groups (see Table 13 to 15). Comparing both hypothetical incidents within groups reveals that credibility differs significantly between subjects for loyal Apple and Nokia customers (see Table 16).

Table 14: Descriptive statistics for evaluations of corruption and test of between-subject (group) effects

T2 means (s.d.)	Overall n=427		Nokia n=105		Apple n=151		ANOVA ****			Kruskal-Wallis-Test
	Skewness / Kurtosis *	NC **	CU ***	NC **	CU ***	η^2	Model	Intercept	Segment	
Credibility (1.24)	4.77 -.09 / -.35	5.02 _a (1.19)	4.60 _a (1.33)	4.78 _a (1.18)	4.60 _a (1.29)	x	x	x	.114	
Criticality (1.41)	5.19 -.52 / -.20	5.29 _b (1.39)	5.19 _b (1.46)	5.47 _b (1.27)	4.51 (1.44)	.06	.93	.06	.000	

* Standard Errors: .118 (Skewness), .236 (Kurtosis) ** Non-Customer *** Customer **** All shown corrected models, intercepts and fixed factors (segment) are significant on $p < .01$; Levene-Test is not significant for both items ($p < .05$)

^{a,b} Each subscript letter denotes a subset of groups whose (observed) mean differences are not significant on $p < .01$ using Multiple Comparisons (Post-Hoc-Test, Bonferroni)

Table 15: Descriptive statistics for evaluations of the product failure and test of between-subject effects

T3 means (s.d.)	Overall n=448		Nokia n=98		Apple n=140		ANOVA****			Kruskal-Wallis-Test
	Skewness / Kurtosis*	NC**	CU***	NC**	CU***	η^2	Model	Intercept	Segment	
Credibility	5.05 (1.45)	-.47 / -.34	5.09_a (1.64)	5.09_a (1.44)	5.01_a (1.43)	5.03_a (1.31)	x	x	x	.840
Criticality	5.02 (1.56)	-.55 / -.26	5.42_b (1.51)	4.90_{b,c} (1.48)	5.25_b (1.46)	4.48_c (1.66)	.05	.91	.05	.000

* Standard Errors: .115 (Skewness), .230 (Kurtosis) ** Non-Customer *** Customer **** All shown corrected models, intercepts and fixed factors (segment) are significant on $p < .01$; Levene-Test is only not significant for criticality (.05)

^{a,b} Each subscript letter denotes a subset of groups whose (observed) mean differences are not significant on $p < .01$ using Multiple Comparisons (Post-Hoc-Test, Bonferroni)

Contrary to expectations that a less known product failure is perceived less credible than the reference incident, the results in Table 17 do not reveal significant effects within subjects regarding credibility. In contrast, in the case of corruption (T2), credibility decreases except for Nokia-NC. In short, the experimental design works as intended. Hypothetical incidents are perceived as credible (mean > 4.0).

Table 16: Independent samples test of mean differences (test between subjects within groups - T2 to T3)

T2 to T3		Levene's Test			t-test for Equality of Means					Independent-Samples Mann-Whitney U Test	
		F	Sig.	EV***	Mean Difference	Std. Error	t	d.f.	Sig. (2-tailed)		
Credibility	Nokia	NC*	11.729	.001	EV not assumed	-.073	.202	-.360	176	.719	.331
		CU**	.562	.454	EV assumed	-.490	.199	-2.466	195	.015	.011
	Apple	NC*	3.411	.066	EV assumed	-.226	.153	-1.473	289	.142	.084
		CU**	.004	.949	EV assumed	-.429	.193	-2.216	182	.028	.023
Criticality	Nokia	NC*	1.195	.276	EV assumed	-.133	.203	-.652	201	.515	.354
		CU**	.189	.664	EV assumed	.291	.210	1.383	195	.168	.183
	Apple	NC*	3.183	.075	EV assumed	.220	.160	1.373	289	.171	.221
		CU**	2.080	.151	EV assumed	.032	.233	.136	182	.892	.774

* Non-customer ** Customer *** Equal variances

Considering the evaluations of criticality between groups, the biased information processing of current Apple customers is striking compared to other groups. Apple

customers perceive the reference and both hypothetical treatments similar and less critical. However, perceived criticality of hypothetical incidents do not differ significantly for other groups either. Nevertheless, criticality decreases significantly in comparison to the reference for both Nokia groups regarding corruption as well as for Nokia-CU and Apple-NC regarding product failure.

Table 17: Descriptive statistics and test of within-subject effects (reference CI to T1 and T2)

Reference CI (RI) to T2 and T3				Paired Differences			t-value	d.f.	Sig. (2-tailed)	Wilcoxon signed rank test
				Mean ^{***}	s.d.	Std. Error				
Credibility	Nokia	NC*	RI - T2	.19	1.63	.159	1.198	104	.234	.166
			RI - T3	.03	1.69	.171	.179	97	.858	.686
		CU**	RI - T2	.35	1.45	.152	2.316	90	.023	.029
			RI - T3	.04	1.49	.145	.260	105	.795	.863
	Apple	NC*	RI - T2	.35	1.74	.142	2.478	150	.014	.017
			RI - T3	.00	1.49	.126	.000	139	1.000	.985
		CU**	RI - T2	.66	2.00	.224	2.963	79	.004	.002
			RI - T3	.10	1.49	.146	.658	103	.512	.439
Criticality	Nokia	NC*	RI - T2	.55	1.72	.168	3.289	104	.001	.001
			RI - T3	.31	1.77	.178	1.715	97	.090	.060
		CU**	RI - T2	.73	1.48	.155	4.687	90	.000	.000
			RI - T3	.67	2.09	.203	3.304	105	.001	.000
	Apple	NC*	RI - T2	.08	1.56	.127	.626	150	.532	.430
			RI - T3	.71	1.59	.135	5.250	139	.000	.000
		CU**	RI - T2	-.01	2.07	.232	-.054	79	.957	.851
			RI - T3	.21	2.28	.223	.948	103	.345	.392

* Non-customer ** Customer *** Bigger values represent higher losses (negative differences)

6.5 Reactions to critical incidents (changes in latent means)

In order to compare unbiased changes in latent means (Temme & Hildebrandt, 2009), the condition of factorial invariance is examined considering pre-test and the respectively three post-tests within a group. The outcomes indicate strong factorial invariance of all multi-sample confirmatory factor analyses applying the criteria of Little et al. (2007). Values of NNFI range from .95 to .99 across samples and invariance levels. Furthermore, even strict factorial invariance is given for all CFA except for the endogenous factor model of Nokia-NC. Due to only marginal effects of missed strict factorial invariance for the estimation of latent variables, differences are neglected.

To evaluate the impact of critical incidents on latent variables, estimated changes of latent means (κ), shown in Tables 18 to 21, are considered. As a consequence of the general hypothesized negative impact (H7) and multiple comparisons (three per group), significance is assessed on the basis of 1-tailed t-tests with Bonferroni correction.

Table 18: Estimated differences in factor means (smaller values indicate a bigger loss in latent factor means)

K (s.d.) / t-value		PQU	BPE	ORG	PVA	LOY	EQU
Nokia - NC	T1	-0.38 (.37) / -1.02	-0.22 (.31) / -.70	-0.20 (.47) / -.43	-0.27 (.30) / -.90	0.04 (.17) / .22	-0.36 (.21) / -1.70
	T2	-0.61^{***} (.21) / -2.91	-0.27 (.23) / -1.14	-0.48 (.29) / -1.70	-0.48^{**} (.20) / -2.41	0.04 (.14) / .30	-0.44^{**} (.17) / -2.61
	T3	-0.69^{***} (.24) / -2.94	-0.37[*] (.20) / -1.87	-0.48 (.30) / -1.62	-0.48^{**} (.20) / -2.41	0.06 (.13) / .50	-0.24 (.18) / -1.34

* p < 0.1 ** p < 0.05 *** p < 0.01 (1-tailed t-test considering Bonferroni correction)

Table 19: Estimated differences in factor means (smaller values indicate a bigger loss in latent factor means)

K (s.d.) / t-value		PQU	BPE	ORG	PVA	LOY	EQU
Nokia - CU	T1	-0.42 (.30) / -1.40	-0.06 (.39) / -.16	-0.22 (.40) / -.55	-0.33 (.23) / -1.43	-0.15 (.35) / -.44	-0.35 (.32) / -1.09
	T2	-0.72^{***} (.25) / -2.89	-0.38 (.32) / -1.21	-0.90^{**} (.34) / -2.66	-0.41 (.23) / -1.75	-0.21 (.30) / -.68	-0.40 (.29) / -1.36
	T3	-0.61^{**} (.27) / -2.24	-0.16 (.30) / -.52	-0.34 (.37) / -.92	-0.27 (.26) / -1.05	0.02 (.31) / .07	-0.28 (.30) / -.93

* p < 0.1 ** p < 0.05 *** p < 0.01 (1-tailed t-test considering Bonferroni correction)

Table 20: Estimated differences in factor means (smaller values indicate a bigger loss in latent factor means)

K (s.d.) / t-value		PQU	BPE	ORG	PVA	LOY	EQU
Apple - NC	T1	-0.23 (.25) / -.91	-0.14 (.40) / -.36	-0.20 (.28) / -.71	-0.16 (.26) / -.60	0.08 (.26) / .31	0.01 (.26) / .03
	T2	-0.42[*] (.22) / -1.90	-0.15 (.30) / -.51	-0.42 (.26) / -1.62	-0.44[*] (.23) / -1.92	-0.04 (.23) / -.19	-0.24 (.23) / -1.04
	T3	-0.63^{***} (.23) / -2.75	-0.12 (.30) / -.41	-0.31 (.26) / -1.19	-0.38 (.26) / -1.47	-0.02 (.23) / -.10	-0.14 (.24) / -.56

* p < 0.1 ** p < 0.05 *** p < 0.01 (1-tailed t-test considering Bonferroni correction)

Table 21: Estimated differences in factor means (smaller values indicate a bigger loss in latent factor means)

K (s.d.) / t-value		PQU	BPE	ORG	PVA	LOY	EQU
Apple - CU	T1	-0.19 (.12) / -1.55	-0.28 (.41) / -.68	-0.04 (.52) / -.08	-0.23 (.25) / -.93	-0.20 (.64) / -.32	0.04 (.47) / .08
	T2	-0.21 (.12) / -1.84	-0.31 (.32) / -.97	-0.32 (.39) / -.83	-0.32 (.21) / -1.51	-0.53 (.59) / -.90	-0.16 (.45) / -.36
	T3	-0.39** (.16) / -2.52	-0.11 (.27) / -.39	-0.03 (.39) / -.07	-0.14 (.23) / -.64	0.04 (.45) / .08	0.22 (.32) / .70

* p < 0.1 ** p < 0.05 *** p < 0.01 (1-tailed t-test considering Bonferroni correction)

First of all, assessing results with regard to hypothesis 7 leads to the result that 9 out of 72 estimated changes are positive. However, the changes are so marginal in eight of these nine cases that a stability of these constructs is assumed. Only the insignificant positive change for the group of Apple-CU indicates possibly a reactance towards the treatment (T3). Hence, hypothesis 7 is just partially supported.

In consequence of missing a common scaling of latent variables across all four groups, hypotheses are assessed judging the significance pattern. Considering corruption (T2) first, hypotheses 8, 9 and 11 are supported. That means, direct comparisons of loyal and potential customers of both brands imply that higher brand equity (H8) as well as higher loyalty (H9) lead to smaller effects. Additionally, results of comparing both customer segments within brands suggest that loyal customers are less affected (H11).

Considering the reaction to the product failure (T3) next, results are ambiguous. Although hypotheses 8 and 9 are supported comparing potential customers, results are indistinguishable comparing current customers. Only on the basis of the general level of changes in latent means could one speculate for a smaller impact regarding Apple. Consequently, hypotheses 8 and 9 are just partially supported with regard to the product failure. Hypothesis 11 is also only partly supported due to obvious differences between potential and loyal customers of Nokia in contrast to Apple.

Evaluating cross effects (comparing customers with non-customers of the other brand), reactions in fringe groups (Nokia-NC and Apple-CU) correspond to hypotheses, whereas comparisons of Nokia-CU and Apple-NC lead to ambiguous results. However, due to a very challenging isolation of causes, a closer examination of cross effects is neglected.

Assessing weakened dimensions of brand equity depending on the type of critical incident implies that hypotheses 12a (ORG) and 12c (PVA) are only partially supported. In contrast, hypothesis 12b (PQU) is supported without any kind of restrictions. Organizational associations are a bit more affected in the case of corruption than when the product failure occurred, but the effect is only significant for customers of Nokia. Whereas, in the case of a product failure, the negative effect on the perceived quality dimension is significant for all groups. Significant effects regarding the perceived value exist only for potential customers of Apple and Nokia in the case of corruption or respectively in both cases. However, corruption apparently affects the perceived quality dimension significantly for all groups except Apple-CU.

Evaluating results with regard to hypothesis 13 (loyalty is less effected) points out that loyalty is marginally or not affected (see above, positive changes), especially for potential customers. Moreover, marginal changes and the absence of significant effects for customers after the product failure indicate stability of the loyalty construct. Hence, hypothesis 13 is supported.

Hypothesis 14 (less critical incidents affect brand equity less) is not supported. With the exception of Apple-CU, where a similar critical and less credible perceived incident induces equally strong effects (comparing RI to T2, see Table 17), all results

contradict this hypothesis. This means, reactions are stronger despite comparable or lower criticality.

With regard to hypothesis 15, presuming that less credible incidents have a minor effect on brand equity, results are contradictory. On the one hand, less credible and similarly critical perceived incidents lead to smaller effects comparing T2 and T3 (Apple-CU). On the other hand, despite the smaller credibility of corruption (T2) the occurring effect is stronger for Nokia's customers.

However, comparing reactions to hypothetical incidents, effects overlap regarding criticality and credibility. But stronger reactions to corruption imply that perceived criticality dominates the effect over credibility taking into account the conditions (comparable critical and less credible) and results of Apple-CU. Overall, it is apparent that the immediate reactions triggered by corruption result in a bigger loss of positive associations compared to product failure for all groups except the customers of Apple. In conclusion, the following table presents all results with regard to reaction hypotheses.

Table 22: Overview of results (reaction hypotheses)

Reaction hypotheses		Product failure	Corruption
7	CI reduces positive attitudes	Support in 20/24	Support in 23/24
8	High EQU leads to smaller effects	Support in 4/8	Supported (8/8)
9	Effects of CI are less the greater LOY	Support in 4/8	Supported (8/8)
11	CU reduce their attitudes less than NC	Nokia: supported Apple: not supported	Supported (2/2)
12a	Corruptions affect ORG significantly	X	Support in 1/4
12b	Product failures affect PQU significantly	Supported (4/4)	X
12c	PVA is affected in both cases	NC: support in 1/2 CU: not supported	NC: supported (2/2) CU: not supported
13	LOY is less affected	Supported (4/4)	Supported (4/4)
14	CI perceived less critical, affect EQU less	Not supported	
15	Less credible news affects EQU less	Support in 1/12	

7 Discussion

Nowadays, consumers are often confronted, deliberately or otherwise, with various critical incidents independent of their current business relation with a company. For this reason, this paper addresses the essential questions. When and to what extent do such critical incidents damage the customer-brand relationship? More precisely, this study examines which dimensions of customer based brand equity are affected depending on distinct critical incidents and which moderators play a role.

For this purpose, an online experiment was conducted whose design increases external validity and overcomes some criticism of previous experiments (e.g. Cleeren et al., 2008; van Heerde et al., 2007, Grewal, Roggeveen & Tsiros, 2008). Therefore, first, participants receive some information of the critical incidents via internet as negative publicity (Ahluwalia et al., 2000) in their familiar surroundings. Second, incidents are based on actual historical events and are transmitted via real credible media. Third, this study analyzes effects regarding distinct customer segments, various incidents and brands at the same time on the basis of large samples. Finally, effects are examined taking into account real brands and business relations.

The results indicate a differing immediate negative effect depending on various factors. In principle, the results imply that a strong brand equity buffers negative perception of critical incidents as hypothesized earlier (Hess, Ganesan & Klein, 2003; Tax, Brown & Chandrashekar, 1998). However, not only brand equity works as a moderator, the current usage of a brand reduces the negative impact too. Comparing loyal with potential customers, this analysis shows, as supposed by Dawar and Pillutla (2000), actual customers shift their attitudes less. Even the consequence of a BPE decrease for potential Nokia customers is in line with outcomes of Dawar and Pillutla (2000) after a product failure. This means, on the one hand, potential

customers tend to lose interest in a brand faster because they are missing a strong relation and an opportunity to be reassured that the product is safe. On the other hand, when a critical incident occurs and the user is not personally affected, the current usage works as an attitude stabilizing anchor.

This effect confirms indirectly the existence of moderators such as commitment (e.g. Ingram et al., 2005) and familiarity (e.g. Ahluwalia, 2002). Following Morgan and Hunt (1994) and taking commitment as a key factor for successful sales for granted, customers possess a high commitment because they have already bought the brand. However, in the case of necessary post crisis communication, the differentiation between loyal and potential customers seems more appropriate in practice because these groups are easier to separate and to address.

Moreover, outcomes suggest that number and type of affected dimensions of CBBE as well as the effect size depend on both type of incident and the above mentioned moderators. There are indications that key benefit dimensions (PQU – function of technical devices) are almost always affected. Whereas in the case of corruption, organizational associations tend to be additionally more affected. However, the reduction of perceived quality triggered by corruption contradicts the statement of Dawar and Lei (2009) that core associations shift only when directly affected by crisis. In principle, post crisis communication should focus especially on significantly damaged dimensions of CBBE. Indeed, given that attitudinal loyalty is a necessary preliminary stage of loyal behavior, outcomes of robust attitudinal loyalty imply that critical incidents do not induce in general a changed behavior. Consequently, appropriate handling of rare critical incidents and the corresponding bad news can be an opportunity to improve brand equity in the long run.

8 Limitations and future research

This analysis may be subject to some limitations. First, this study focuses on smartphone brands and hence on basically utilitarian products with high involvement. Hence, the findings can be limited to mobile phones or these types of goods. Therefore, future research has to figure out whether and how effects vary in other combinations of utilitarian, hedonistic as well as low and high involvement goods.

Second, data are collected using snowball-sampling and a self-administered online experiment. Consequently, sample composition and representativeness might raise some concerns about the generalizability of results. However, taking the typical target group of smartphones into account, the used sample seems adequate containing mainly young technically inclined people and an above average share of smartphone users (58.6%).

Third, the experimental design and the context of research possibly limits the external validity and generalizability of findings. On the one hand, immediate shifts may differ to reactions in the long run. Moreover, being more often exposed to a critical incident may lead to modified attitudinal changes. On the other hand, people personally affected by a critical incident probably react more emotionally and hence differently.

Fourth, the applied methodology requires multivariate normal distributed variables, but variables of the used sample are not even univariate normal distributed. However, following Boomsma and Hoogland (2001), Yuan, Bentler and Zhang (2005), Ryu (2011) and West, Finch and Curran (1995), violations are less critical for large samples (> 200) and positive or negative skewness and kurtosis below 2.0 and 7.0 respectively.

Finally, these limitations, other types of critical incidents, other cultures, brands and branches as well as other measurement models are possible fruitful lines for further research.

References

- Aaker, D. A. (1991). *Managing brand equity*. New York: The Free Press.
- Aaker, D. A. (1996). *Building strong brands*. New York: The Free Press.
- Aaker, D. A. & Biel, A. L. (1993). *Brand equity & advertising: Advertising's role in building strong brands*. Hillsdale, New Jersey: Erlbaum.
- Aaker, J. L., Fournier, S. & Brasel, A. S. (2004). When good brands do bad. *Journal of Consumer Research*, 31 (June), 1-16.
- Ahluwalia, R., Burnkrant, R. E. & Unnava, R. H. (2000). Consumer response to negative publicity: the moderating role of commitment. *Journal of Marketing Research*, 37, 203-214.
- Ahluwalia, R. (2002). How prevalent is the negativity effect in consumer environments? *Journal of Consumer Research*, 29, 270-279.
- Ailawadi, K. L., Lehmann, D. R. & Neslin, S. A. (2003). Revenue premium as an outcome measure of brand equity. *Journal of Marketing*, 67 (4), 1-17.
- Anderson, J. C. & Gerbing, D. W. (1988). Structural equation modeling in practice - a review and recommended two-step approach. *Psychological Bulletin*, 103 (3), 411-423.
- Arbuckle, J. L. (2008). *AMOSTM 17.0 User's Guide*, Chicago.
- Bagozzi, R. P. (1977). Structural Equation Models in Experimental Research. *Journal of Marketing Research*, 14 (2), 209-226.
- Bagozzi, R. P. & Baumgartner, H. (1994). The evaluation of structural equation models and hypotheses testing. *Principles of Marketing Research*, Cambridge: Bagozzi, R. P. (ed.), 386-422.
- Bagozzi, R. P. & Yi, Y. (1988). On the evaluation of structural equation models. *Journal of the Academy of Marketing Science*, 16 (1), 74-94.

- Barrett, P. (2007). Structural equation modeling: Adjudging model fit. *Personality and Individual Differences*, 42, 815-824.
- Baumgartner, H. & Steenkamp, J. B. (2006). An extended paradigm for measurement analysis of marketing constructs applicable to panel data. *Journal of Marketing Research*, 43 (3), 431-442.
- Bitner, M. J., Booms, B. H. & Tetreault, M. (1990). The service encounter: diagnosing favorable and unfavorable incidents. *Journal of Marketing*, 54 (1), 71-84.
- Boomsma, A., & Hoogland, J. J. (2001). The robustness of LISREL modeling revisited. R. Cudeck, S. du Toit, & D. Sörbom (Eds.), *Structural equation models: Present and future. A Festschrift in honor of Karl Jöreskog*. Chicago: Scientific Software International, 139-168.
- Buil, I., de Chernatony, L. & Martinez, E. (2008). A cross-national validation of the consumer-based brand equity scale. *Journal of Product & Brand Management*, 17 (6), 384-392.
- Carlson, M. & Mulaik, S. (1993). Trait ratings from descriptions of behavior as mediated by components of meaning. *Multivariate Behavioral Research*, 28, 111-159.
- Chen, F., Curran, P. J., Bollen, K. A., Kirby, J. & Paxton, P. (2008). An empirical evaluation of the use of fixed cutoff points in RMSEA test statistic in structural equation models. *Sociological Methods & Research*, 36 (4), 462-494.
- Christodoulides, G. & de Chernatony, L. (2010). Consumer-based brand equity conceptualization and measurement: A literature review. *International Journal of Market Research*, 52 (1), 43-66.
- Cleeren, K., Dekimpe, M. G. & Helsen, K. (2008). Weathering product-harm crises. *Journal of the Academy of Marketing Science*, 36, 262-270.
- Cronbach, L. J. & Meehl, P. E. (1955). Construct validity in psychological tests. *Psychological Bulletin*, 52, 281-302.

- Dawar, N. & Pillutla, M. M. (2000). Impact of product-harm crises on brand equity: the moderating role of consumer expectations. *Journal of Marketing Research*, 37, 215-226.
- Dawar, N. & Lei, J. (2009). Brand crises: the roles of brand familiarity and crisis relevance in determining the impact on brand evaluations. *Journal of Business Research*, 62, 509-516.
- Fornell, C. & Larcker, D. (1981). Evaluating structural equation models with unobservable variables and measurement error. *Journal of Marketing Research*, 18 (1), 39-50.
- Gardial, S., Fisher, D., Flint, J. & Woodruff, R. B. (1996). Trigger events: exploring the relationships between critical events and consumers' evaluations, standards, emotions, values and behavior. *Journal of Consumer Satisfaction, Dissatisfaction and Complaining Behavior*, 9, 35-51.
- Grewal, D., Roggeveen, A. L. & Tsiros, M. (2008). The effect of compensation on repurchase intentions in service recovery. *Journal of Retailing*, 84 (4), 424-434.
- Gustafsson, A., Johnson, M.D. & Roos, I. (2005). The effects of customer satisfaction, relationship commitment dimensions, and triggers on customer retention. *Journal of Marketing*, 69, 210-218.
- Ingram, R., Skinner, S. J. & Taylor, V.A. (2005). Consumers' evaluation of unethical marketing behaviors: The role of customer commitment. *Journal of Business Ethics*, 3, 237-252.
- Hess, R. L., Ganesan, S. & Klein, N. M. (2003). Service failure and recovery: the impact of relationship factors on customer satisfaction. *Journal of the Academy of Marketing Science*, 31 (2), 127-145.
- Hildebrandt, L. (1984). Kausalanalytische Validierung in der Marketingforschung. *Marketing: Zeitschrift für Forschung und Praxis*, 6 (1), 5-24.

- Homburg, C. & Giering, A. (1996). Konzeptualisierung und Operationalisierung komplexer Konstrukte – Ein Leitfaden für die Marketingforschung. *Zeitschrift für Forschung und Praxis*, 18 (1), 5-24.
- Hu, L.-T. & Bentler, P. M. (1998). Fit indices in covariance structure analysis: sensitivity to underparameterized model misspecification. *Psychological Methods*, 3, 424–453.
- Hu, L.-T. & Bentler, P. M. (1999). Cutoff criteria for fit indexes in covariance structure analysis: conventional criteria versus new alternatives. *Structural Equation Modeling*, 6, 1-55.
- Keaveney, S. M. (1995). Customer switching behavior in service industries: an exploratory study. *Journal of Marketing*, 59 (2), 71-82.
- Keller, K. L. (1993). Conceptualizing, measuring, and managing customer-based brand equity. *Journal of Marketing*, 57 (1), 1-22.
- Klein, J. & Dawar, N. (2004). Corporate social responsibility and consumer's attributions and brand evaluations in a product-harm crisis. *International Journal of Research in Marketing*, 21, 203-217.
- Lassar, W., Mittal, B. & Sharma, A. (1995). Measuring customer-based brand equity. *Journal of Consumer Marketing*, 12 (4), 11-19.
- Laufer, D., Gillespie, K., McBride, B. & Gonzalez, S. (2005). The role of severity in consumer attributions of blame: defensive attributions in product-harm crises in Mexico. *Journal of International Consumer Marketing*, 17 (2/3), 33-50.
- Little, R. J. A. (1988). A test of missing completely at random for multivariate data with missing values. *Journal of the American Statistical Association*, 83 (404), 1198-1202.

- Little, T. D., Card, N. A., Slegers, D. W. & Ledford, E. C. (2007). Representing contextual effects in multiple groups MACS models. *Modeling Contextual Effects in Longitudinal Studies*, Mahwah, New Jersey: Little, Bovaird & Card, 121-147.
- MacCallum, R. C., Browne, M. W. & Sugawara, H. M. (1996). Power analysis and determination of sample size for covariance structure Modeling. *Psychological Methods*, 1 (2), 130-149.
- Mangold, W. G. & Faulds, D. J. (2009). Social media: The new hybrid element of the promotion mix. *Business Horizons*, 52, 357-365.
- Maxham, J. G. & Netemeyer, R. G. (2002). A longitudinal study of complaining customers' evaluations of multiple service failures and recovery efforts. *Journal of Marketing*, 66, 52-71.
- Morgan, R. M. & Hunt, S. D. (1994). The commitment-trust theory of relationship marketing. *Journal of Marketing*, 58 (3), 20-38.
- Myers, C. (2003). Managing brand equity: a look at the impact of attributes. *Journal of Product & Brand Management*, 12 (1), 39-51.
- Nunnally, J. C. (1978). *Psychometric Theory*. 2nd edition, New York.
- Romaniuk, J. (2008). Comparing methods of measuring brand personality traits. *Journal of Marketing Theory and Practice*, 2, 153-161.
- Roos, I. (2002). Methods of investigating Critical Incidents: a comparative review. *Journal of Service Research*, 4, 193-204.
- Roos, I., Edvardsson B. & Gustafsson, A. (2004). Customer switching patterns in competitive and noncompetitive Service Industries. *Journal of Service Research*, 6, 256-271.
- Rubin, D. B. (1976). Inference and missing data. *Biometrika*, 63 (3), 581-592.

- Rust, R. T., Lemon, K. N. & Zeithaml, V. A. (2004). Return on Marketing: Using Customer Equity to Focus Marketing Strategy. *Journal of Marketing*, 68, 109–127.
- Ryu, E. (2011). Effects of skewness and kurtosis on normal-theory based maximum likelihood test statistic in multilevel structural equation modeling. *Behavior Research Methods*, 43 (4), 1066-1074.
- Shleifer, A. (2004). Does Competition Destroy Ethical Behavior? *American Economic Review Papers and Proceedings*, 94, 414–418.
- Sirdeshmukh, D., Singh, J. & Sabol, B. (2002). Consumer trust, value, and loyalty in relational exchanges. *Journal of Marketing*, 66 (1), 15-37.
- Sörbom, D. (1974). A general method for studying differences in factor means and factor structure between groups. *British Journal of Statistical Psychology*, 27, 137-163.
- Tax, S. S., Brown S. W. & Chandrashekar, M. (1998). Customer evaluations of service complaint experiences: implications for relationship marketing. *Journal of Marketing*, 62 (2), 60-76.
- Temme, D. & Hildebrandt, L. (2009). Gruppenvergleiche bei hypothetischen Konstrukten – Die Prüfung der Übereinstimmung von Messmodellen mit der Strukturgleichungsmethodik. *Zfbf*, 61 (2), 138-185.
- van Doorn, J. & Verhoef, P. C. (2008). Critical incidents and the impact of satisfaction on customer share. *Journal of Marketing*, 72, 123-142.
- van Heerde, H. J., Helsen, K. & Dekimpe, M. G. (2007). The impact of a product-harm crisis on marketing effectiveness. *Marketing Science*, 26 (2), 230-245.
- Weißgerber, A. (2007). Konsumentenverhalten in ereignisinduzierten Markenkrisen – Der Einfluss der Markenbeziehungsqualität. Dissertation. Wiesbaden: Gabler.

- West, S. G., Finch, J. F. & Curran, P. J. (1995). Structural equation modeling with nonnormal variables. Problems and remedies. In R. H. Hoyle (Ed.), *Structural Equation Modeling: Concepts, Issues, Applications*, 56-75. Thousand Oaks, CA: Sage.
- Yoo, B., Donthu, N. & Lee, S. (2000). An examination of selected marketing mix elements and brand equity. *Journal of the Academy of Marketing Science*, 28 (2), 195-211.
- Yoo, B. & Donthu, N. (2001). Developing and validating a multidimensional consumer-based brand equity scale. *Journal of Business Research*, 52, 1-14.
- Yuan, K. H., Bentler, P. M. & Zhang, W. (2005). The effect of skewness and kurtosis on mean and covariance structure analysis: The univariate case and its multivariate implication. *Sociological Methods & Research*, 34, 240–258.
- Zeithaml, V. A. (1988). Consumer perceptions of price, quality, and value: a means-end model and synthesis of evidence. *Journal of Marketing*, 52 (3), 2-22

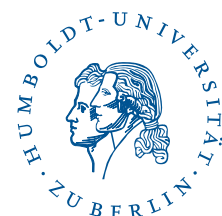
SFB 649 Discussion Paper Series 2012

For a complete list of Discussion Papers published by the SFB 649, please visit <http://sfb649.wiwi.hu-berlin.de>.

- 001 "HMM in dynamic HAC models" by Wolfgang Karl Härdle, Ostap Okhrin and Weining Wang, January 2012.
- 002 "Dynamic Activity Analysis Model Based Win-Win Development Forecasting Under the Environmental Regulation in China" by Shiyi Chen and Wolfgang Karl Härdle, January 2012.
- 003 "A Donsker Theorem for Lévy Measures" by Richard Nickl and Markus Reiß, January 2012.
- 004 "Computational Statistics (Journal)" by Wolfgang Karl Härdle, Yuichi Mori and Jürgen Symanzik, January 2012.
- 005 "Implementing quotas in university admissions: An experimental analysis" by Sebastian Braun, Nadja Dwenger, Dorothea Kübler and Alexander Westkamp, January 2012.
- 006 "Quantile Regression in Risk Calibration" by Shih-Kang Chao, Wolfgang Karl Härdle and Weining Wang, January 2012.
- 007 "Total Work and Gender: Facts and Possible Explanations" by Michael Burda, Daniel S. Hamermesh and Philippe Weil, February 2012.
- 008 "Does Basel II Pillar 3 Risk Exposure Data help to Identify Risky Banks?" by Ralf Sabiwalsky, February 2012.
- 009 "Comparability Effects of Mandatory IFRS Adoption" by Stefano Cascino and Joachim Gassen, February 2012.
- 010 "Fair Value Reclassifications of Financial Assets during the Financial Crisis" by Jannis Bischof, Ulf Brüggemann and Holger Daske, February 2012.
- 011 "Intended and unintended consequences of mandatory IFRS adoption: A review of extant evidence and suggestions for future research" by Ulf Brüggemann, Jörg-Markus Hitz and Thorsten Sellhorn, February 2012.
- 012 "Confidence sets in nonparametric calibration of exponential Lévy models" by Jakob Söhl, February 2012.
- 013 "The Polarization of Employment in German Local Labor Markets" by Charlotte Senftleben and Hanna Wielandt, February 2012.
- 014 "On the Dark Side of the Market: Identifying and Analyzing Hidden Order Placements" by Nikolaus Hautsch and Ruihong Huang, February 2012.
- 015 "Existence and Uniqueness of Perturbation Solutions to DSGE Models" by Hong Lan and Alexander Meyer-Gohde, February 2012.
- 016 "Nonparametric adaptive estimation of linear functionals for low frequency observed Lévy processes" by Johanna Kappus, February 2012.
- 017 "Option calibration of exponential Lévy models: Implementation and empirical results" by Jakob Söhl und Mathias Trabs, February 2012.
- 018 "Managerial Overconfidence and Corporate Risk Management" by Tim R. Adam, Chitru S. Fernando and Evgenia Golubeva, February 2012.
- 019 "Why Do Firms Engage in Selective Hedging?" by Tim R. Adam, Chitru S. Fernando and Jesus M. Salas, February 2012.
- 020 "A Slab in the Face: Building Quality and Neighborhood Effects" by Rainer Schulz and Martin Wersing, February 2012.
- 021 "A Strategy Perspective on the Performance Relevance of the CFO" by Andreas Venus and Andreas Engelen, February 2012.
- 022 "Assessing the Anchoring of Inflation Expectations" by Till Strohsal and Lars Winkelmann, February 2012.

SFB 649, Spandauer Straße 1, D-10178 Berlin
<http://sfb649.wiwi.hu-berlin.de>

This research was supported by the Deutsche
Forschungsgemeinschaft through the SFB 649 "Economic Risk".



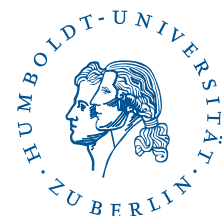
SFB 649 Discussion Paper Series 2012

For a complete list of Discussion Papers published by the SFB 649, please visit <http://sfb649.wiwi.hu-berlin.de>.

- 023 "Hidden Liquidity: Determinants and Impact" by Gökhan Cebiroglu and Ulrich Horst, March 2012.
- 024 "Bye Bye, G.I. - The Impact of the U.S. Military Drawdown on Local German Labor Markets" by Jan Peter aus dem Moore and Alexandra Spitz-Oener, March 2012.
- 025 "Is socially responsible investing just screening? Evidence from mutual funds" by Markus Hirschberger, Ralph E. Steuer, Sebastian Utz and Maximilian Wimmer, March 2012.
- 026 "Explaining regional unemployment differences in Germany: a spatial panel data analysis" by Franziska Lottmann, March 2012.
- 027 "Forecast based Pricing of Weather Derivatives" by Wolfgang Karl Härdle, Brenda López-Cabrera and Matthias Ritter, March 2012.
- 028 "Does umbrella branding really work? Investigating cross-category brand loyalty" by Nadja Silberhorn and Lutz Hildebrandt, April 2012.
- 029 "Statistical Modelling of Temperature Risk" by Zografia Anastasiadou, and Brenda López-Cabrera, April 2012.
- 030 "Support Vector Machines with Evolutionary Feature Selection for Default Prediction" by Wolfgang Karl Härdle, Dedy Dwi Prastyo and Christian Hafner, April 2012.
- 031 "Local Adaptive Multiplicative Error Models for High-Frequency Forecasts" by Wolfgang Karl Härdle, Nikolaus Hautsch and Andrija Mihoci, April 2012.
- 032 "Copula Dynamics in CDOs." by Barbara Choroś-Tomczyk, Wolfgang Karl Härdle and Ludger Overbeck, May 2012.
- 033 "Simultaneous Statistical Inference in Dynamic Factor Models" by Thorsten Dickhaus, May 2012.
- 034 "Realized Copula" by Matthias R. Fengler and Ostap Okhrin, Mai 2012.
- 035 "Correlated Trades and Herd Behavior in the Stock Market" by Simon Jurkatis, Stephanie Kremer and Dieter Nautz, May 2012
- 036 "Hierarchical Archimedean Copulae: The HAC Package" by Ostap Okhrin and Alexander Ristig, May 2012.
- 037 "Do Japanese Stock Prices Reflect Macro Fundamentals?" by Wenjuan Chen and Anton Velinov, May 2012.
- 038 "The Aging Investor: Insights from Neuroeconomics" by Peter N. C. Mohr and Hauke R. Heekeren, May 2012.
- 039 "Volatility of price indices for heterogeneous goods" by Fabian Y.R.P. Bocart and Christian M. Hafner, May 2012.
- 040 "Location, location, location: Extracting location value from house prices" by Jens Kolbe, Rainer Schulz, Martin Wersing and Axel Werwatz, May 2012.
- 041 "Multiple point hypothesis test problems and effective numbers of tests" by Thorsten Dickhaus and Jens Stange, June 2012
- 042 "Generated Covariates in Nonparametric Estimation: A Short Review." by Enno Mammen, Christoph Rothe, and Melanie Schienle, June 2012.
- 043 "The Signal of Volatility" by Till Strohsal and Enzo Weber, June 2012.
- 044 "Copula-Based Dynamic Conditional Correlation Multiplicative Error Processes" by Taras Bodnar and Nikolaus Hautsch, July 2012

SFB 649, Spandauer Straße 1, D-10178 Berlin
<http://sfb649.wiwi.hu-berlin.de>

This research was supported by the Deutsche
Forschungsgemeinschaft through the SFB 649 "Economic Risk".



SFB 649 Discussion Paper Series 2012

For a complete list of Discussion Papers published by the SFB 649, please visit <http://sfb649.wiwi.hu-berlin.de>.

- 045 "Additive Models: Extensions and Related Models." by Enno Mammen, Byeong U. Park and Melanie Schienle, July 2012.
- 046 "A uniform central limit theorem and efficiency for deconvolution estimators" by Jakob Söhl and Mathias Trabs, July 2012
- 047 "Nonparametric Kernel Density Estimation Near the Boundary" by Peter Malec and Melanie Schienle, August 2012
- 048 "Yield Curve Modeling and Forecasting using Semiparametric Factor Dynamics" by Wolfgang Karl Härdle and Piotr Majer, August 2012
- 049 "Simultaneous test procedures in terms of p-value copulae" by Thorsten Dickhaus and Jakob Gierl, August 2012
- 050 "Do Natural Resource Sectors Rely Less on External Finance than Manufacturing Sectors? " by Christian Hattendorff, August 2012
- 051 "Using transfer entropy to measure information flows between financial markets" by Thomas Dimpfl and Franziska J. Peter, August 2012
- 052 "Rethinking stock market integration: Globalization, valuation and convergence" by Pui Sun Tam and Pui I Tam, August 2012
- 053 "Financial Network Systemic Risk Contributions" by Nikolaus Hautsch, Julia Schaumburg and Melanie Schienle, August 2012
- 054 "Modeling Time-Varying Dependencies between Positive-Valued High-Frequency Time Series" by Nikolaus Hautsch, Ostap Okhrin and Alexander Ristig, September 2012
- 055 "Consumer Standards as a Strategic Device to Mitigate Ratchet Effects in Dynamic Regulation" by Raffaele Fiocco and Roland Strausz, September 2012
- 056 "Strategic Delegation Improves Cartel Stability" by Martijn A. Han, October 2012
- 057 "Short-Term Managerial Contracts and Cartels" by Martijn A. Han, October 2012
- 058 "Private and Public Control of Management" by Charles Angelucci and Martijn A. Han, October 2012
- 059 "Cartelization Through Buyer Groups" by Chris Doyle and Martijn A. Han, October 2012
- 060 "Modelling general dependence between commodity forward curves" by Mikhail Zolotko and Ostap Okhrin, October 2012
- 061 "Variable selection in Cox regression models with varying coefficients" by Toshio Honda and Wolfgang Karl Härdle, October 2012
- 062 "Brand equity – how is it affected by critical incidents and what moderates the effect" by Sven Tischer and Lutz Hildebrandt, October 2012

SFB 649, Spandauer Straße 1, D-10178 Berlin
<http://sfb649.wiwi.hu-berlin.de>

This research was supported by the Deutsche
Forschungsgemeinschaft through the SFB 649 "Economic Risk".

